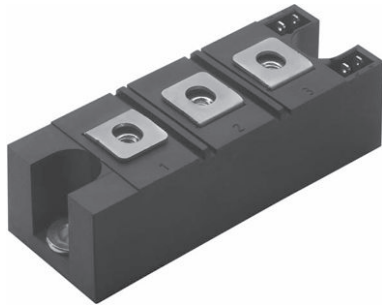


**“Half Bridge” IGBT INT-A-PAK, (Trench PT IGBT), 100 A**

Proprietary Vishay IGBT Silicon “L Series”



INT-A-PAK

PRODUCT SUMMARY	
V_{CES}	600 V
I_C DC, $T_C = 130\text{ }^\circ\text{C}$	100 A
$V_{CE(on)}$ at 100 A, $25\text{ }^\circ\text{C}$	1.16 V
Speed	DC to 1 kHz
Package	INT-A-PAK
Circuit	Half bridge

FEATURES

- Trench PT IGBT technology
- FRED Pt[®] anti-parallel diodes with fast recovery
- Very low conduction losses
- Al₂O₃ DBC
- UL pending
- Designed for industrial level
- Material categorization: for definitions of compliance please see www.vishay.com/doc?99912

RoHS
COMPLIANT**BENEFITS**

- Optimized for high current inverter stages (AC TIG welding machines)
- Direct mounting to heatsink
- Very low junction to case thermal resistance
- Low EMI

ABSOLUTE MAXIMUM RATINGS				
PARAMETER	SYMBOL	TEST CONDITIONS	MAX.	UNITS
Collector to emitter voltage	V_{CES}		600	V
Continuous collector current	I_C	$T_C = 25\text{ }^\circ\text{C}$	337	A
		$T_C = 80\text{ }^\circ\text{C}$	235	
Pulsed collector current	I_{CM}		440	
Peak switching current	I_{LM}		440	
Gate to emitter voltage	V_{GE}		± 20	V
RMS isolation voltage	V_{ISOL}	Any terminal to case, $t = 1\text{ min}$	2500	
Maximum power dissipation	P_D	$T_C = 25\text{ }^\circ\text{C}$	781	W
		$T_C = 100\text{ }^\circ\text{C}$	312	
Operating junction temperature range	T_J		-40 to +150	$^\circ\text{C}$
Storage temperature range	T_{Stg}		-40 to +125	

ELECTRICAL SPECIFICATIONS ($T_J = 25\text{ }^\circ\text{C}$ unless otherwise specified)						
PARAMETER	SYMBOL	TEST CONDITIONS	MIN.	TYP.	MAX.	UNITS
Collector to emitter breakdown voltage	$V_{BR(CES)}$	$V_{GE} = 0\text{ V}$, $I_C = 500\text{ }\mu\text{A}$	600	-	-	V
Collector to emitter voltage	$V_{CE(on)}$	$V_{GE} = 15\text{ V}$, $I_C = 100\text{ A}$	-	1.16	1.34	
		$V_{GE} = 15\text{ V}$, $I_C = 200\text{ A}$	-	1.37	-	
		$V_{GE} = 15\text{ V}$, $I_C = 100\text{ A}$, $T_J = 125\text{ }^\circ\text{C}$	-	1.08	-	
Gate threshold voltage	$V_{GE(th)}$	$V_{CE} = V_{GE}$, $I_C = 3.2\text{ mA}$	4.9	5.8	8.8	
Temperature coefficient of threshold voltage	$\Delta V_{GE(th)}/\Delta T_J$	$V_{CE} = V_{GE}$, $I_C = 3.2\text{ mA}$, ($25\text{ }^\circ\text{C}$ to $125\text{ }^\circ\text{C}$)	-	-27	-	mV/ $^\circ\text{C}$
Forward transconductance	g_{fe}	$V_{CE} = 20\text{ V}$, $I_C = 50\text{ A}$	-	93	-	S
Transfer characteristics	V_{GE}	$V_{CE} = 20\text{ V}$, $I_C = 100\text{ A}$	-	10.2	-	V
Collector to emitter leakage current	I_{CES}	$V_{GE} = 0\text{ V}$, $V_{CE} = 600\text{ V}$	-	1.0	150	μA
		$V_{GE} = 0\text{ V}$, $V_{CE} = 600\text{ V}$, $T_J = 125\text{ }^\circ\text{C}$	-	300	-	
Diode forward voltage drop	V_{FM}	$I_C = 100\text{ A}$, $V_{GE} = 0\text{ V}$	-	1.36	1.96	V
		$I_C = 100\text{ A}$, $V_{GE} = 0\text{ V}$, $T_J = 125\text{ }^\circ\text{C}$	-	1.17	-	
Gate to emitter leakage current	I_{GES}	$V_{GE} = \pm 20\text{ V}$	-	-	± 500	nA



SWITCHING CHARACTERISTICS ($T_J = 25\text{ }^\circ\text{C}$ unless otherwise specified)						
PARAMETER	SYMBOL	TEST CONDITIONS	MIN.	TYP.	MAX.	UNITS
Total gate charge	Q_g	$I_C = 100\text{ A}$, $V_{CC} = 400\text{ V}$	-	942	-	nC
Gate to emitter charge	Q_{ge}		-	295	-	
Gate to collector charge	Q_{gc}		-	802	-	
Turn-on switching energy	E_{on}	$I_C = 100\text{ A}$, $V_{CC} = 300\text{ V}$, $V_{GE} = 15\text{ V}$, $L = 500\text{ }\mu\text{H}$ $R_g = 3.3\text{ }\Omega$, $T_J = 25\text{ }^\circ\text{C}$	-	1.0	-	mJ
Turn-off switching energy	E_{off}		-	7.9	-	
Total switching energy	E_{ts}		-	8.9	-	ns
Turn-on delay time	$t_{d(on)}$		-	242	-	
Rise time	t_r		-	66	-	
Turn-off delay time	$t_{d(off)}$		-	453	-	
Fall time	t_f	-	460	-		
Turn-on switching energy	E_{on}	$I_C = 100\text{ A}$, $V_{CC} = 300\text{ V}$, $V_{GE} = 15\text{ V}$, $L = 500\text{ }\mu\text{H}$ $R_g = 3.3\text{ }\Omega$, $T_J = 125\text{ }^\circ\text{C}$	-	2.0	-	mJ
Turn-off switching energy	E_{off}		-	15.3	-	
Total switching energy	E_{ts}		-	17.3	-	ns
Turn-on delay time	$t_{d(on)}$		-	257	-	
Rise time	t_r		-	68	-	
Turn-off delay time	$t_{d(off)}$		-	716	-	
Fall time	t_f	-	868	-		
Reverse bias safe operating area	RBSOA	$T_J = 150\text{ }^\circ\text{C}$, $I_C = 440\text{ A}$, $V_{CC} = 300\text{ V}$, $V_p = 600\text{ V}$, $R_g = 3.3\text{ }\Omega$, $V_{GE} = 15\text{ V to }0\text{ V}$, $L = 500\text{ }\mu\text{H}$	Fullsquare			
Diode reverse recovery time	t_{rr}	$I_F = 50\text{ A}$, $di_F/dt = 200\text{ A}/\mu\text{s}$, $V_{rr} = 200\text{ V}$	-	115	-	ns
Diode peak reverse current	I_{rr}		-	11	-	A
Diode recovery charge	Q_{rr}		-	638	-	nC
Diode reverse recovery time	t_{rr}	$I_F = 50\text{ A}$, $di_F/dt = 200\text{ A}/\mu\text{s}$, $V_{rr} = 200\text{ V}$, $T_J = 125\text{ }^\circ\text{C}$	-	210	-	ns
Diode peak reverse current	I_{rr}		-	21.4	-	A
Diode recovery charge	Q_{rr}		-	2251	-	nC

THERMAL AND MECHANICAL SPECIFICATIONS						
PARAMETER	SYMBOL	MIN.	TYP.	MAX.	UNITS	
Operating junction temperature range	T_J	-40	-	150	°C	
Storage temperature range	T_{Stg}	-40	-	125		
Junction to case	per switch	R_{thJC}	-	-	0.16	°C/W
	per diode		-	-	0.48	
Case to sink per module	R_{thCS}	-	0.1	-		
Mounting torque	case to heatsink	-	-	4	Nm	
	case to terminal 1, 2, 3	-	-	3		
Weight		-	185	-	g	

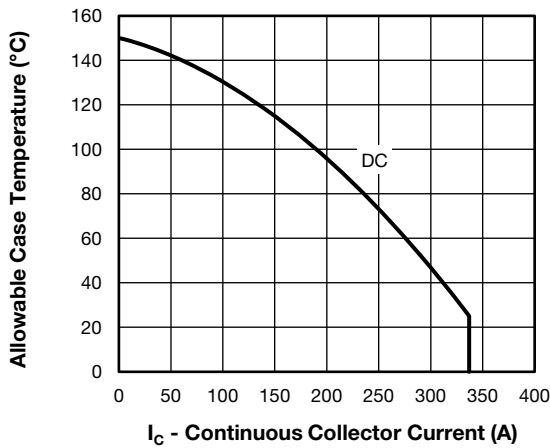


Fig. 1 - Maximum IGBT Continuous Collector Current vs. Case Temperature

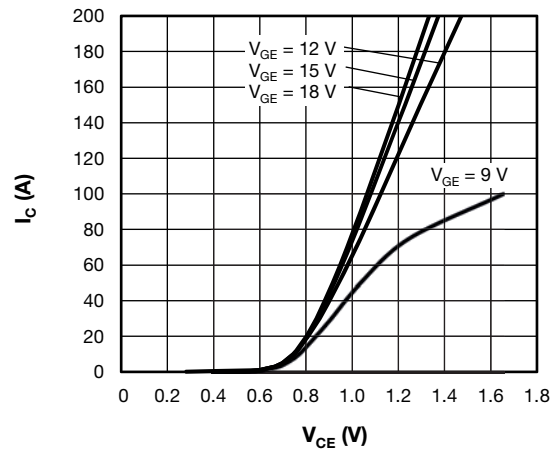


Fig. 4 - Typical IGBT Output Characteristics, $T_J = 125\text{ }^\circ\text{C}$

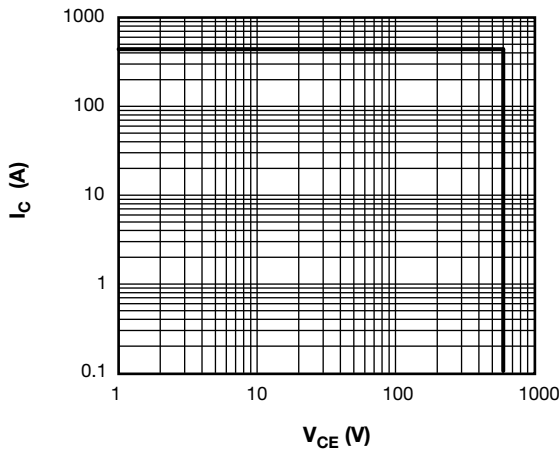


Fig. 2 - IGBT Reverse BIAS SOA $T_J = 150\text{ }^\circ\text{C}$, $V_{GE} = 15\text{ V}$

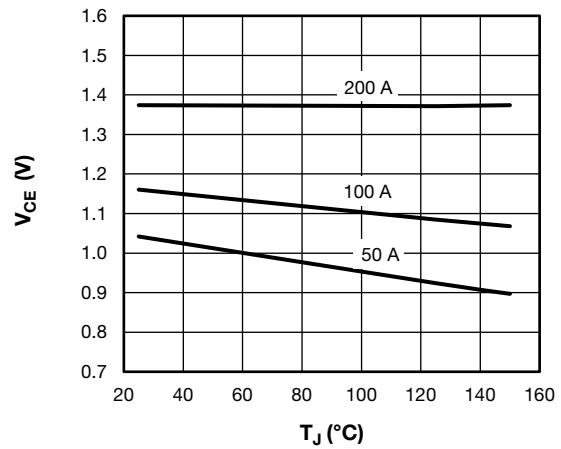


Fig. 5 - Collector to Emitter Voltage vs. Junction Temperature

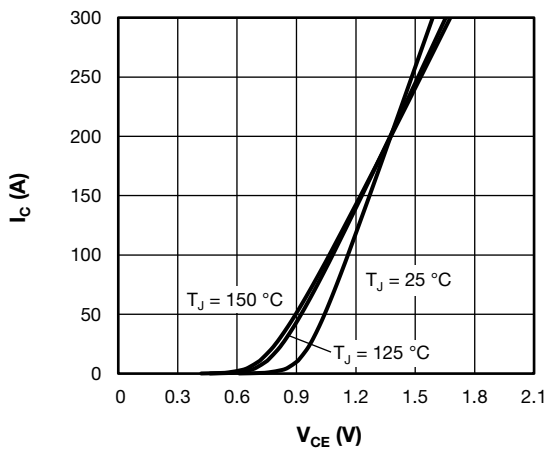


Fig. 3 - Typical IGBT Output Characteristics, $V_{GE} = 15\text{ V}$

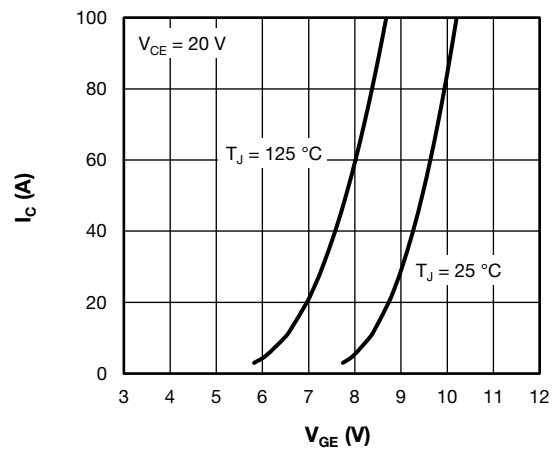


Fig. 6 - Typical IGBT Transfer Characteristics

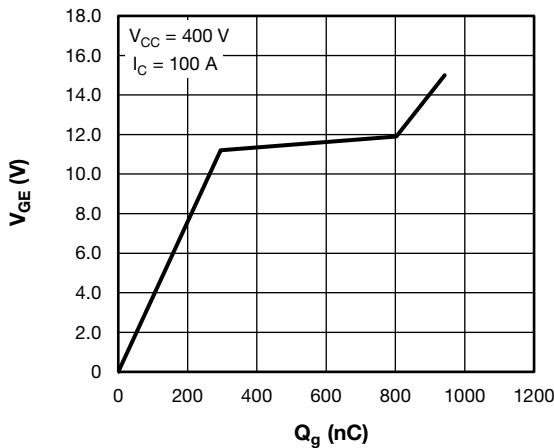


Fig. 7 - Typical Total Gate Charge vs. Gate to Emitter Voltage

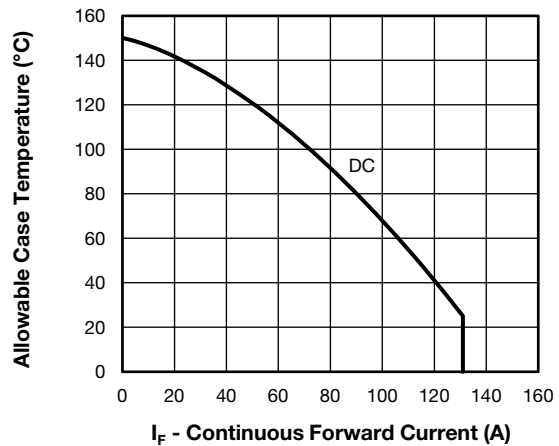


Fig. 10 - Maximum Diode Continuous Forward Current vs. Case Temperature

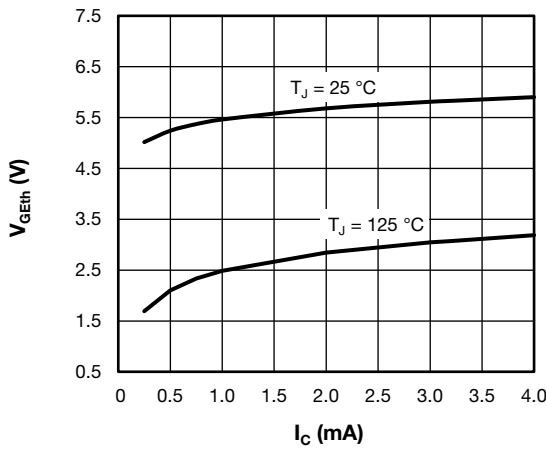


Fig. 8 - Typical IGBT Gate Threshold Voltage

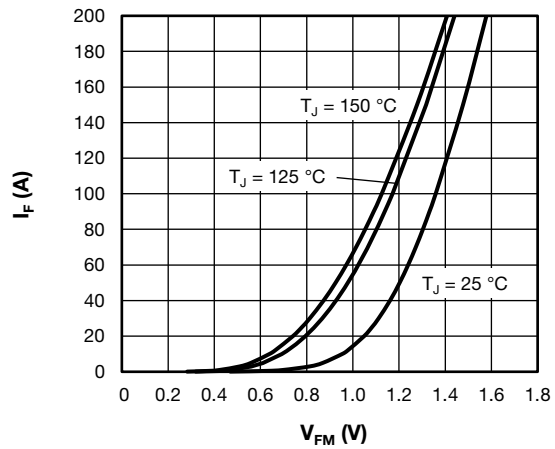


Fig. 11 - Typical Diode Forward Characteristics

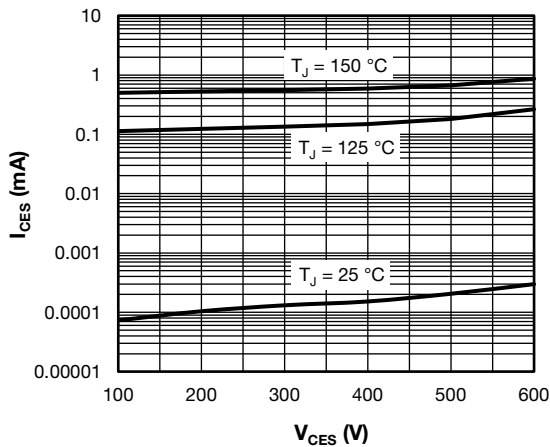


Fig. 9 - Typical IGBT Zero Gate Voltage Collector Current

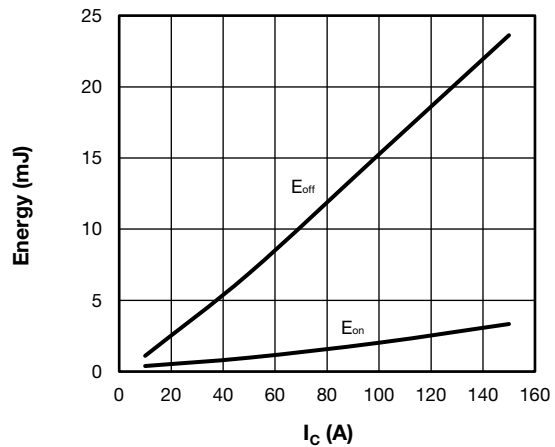


Fig. 12 - Typical IGBT Energy Loss vs. I_C
 $T_J = 125\text{ }^\circ\text{C}$, $V_{CC} = 300\text{ V}$, $R_g = 3.3\ \Omega$, $V_{GE} = 15\text{ V}$, $L = 500\ \mu\text{H}$

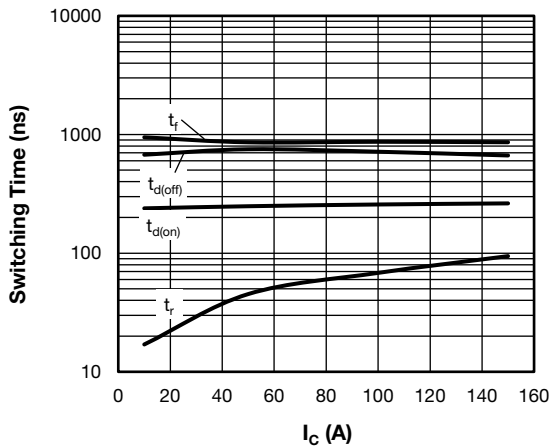


Fig. 13 - Typical IGBT Switching Time vs. I_C
 $T_J = 125^\circ\text{C}$, $V_{CC} = 300\text{ V}$, $R_g = 3.3\ \Omega$, $V_{GE} = 15\text{ V}$, $L = 500\ \mu\text{H}$

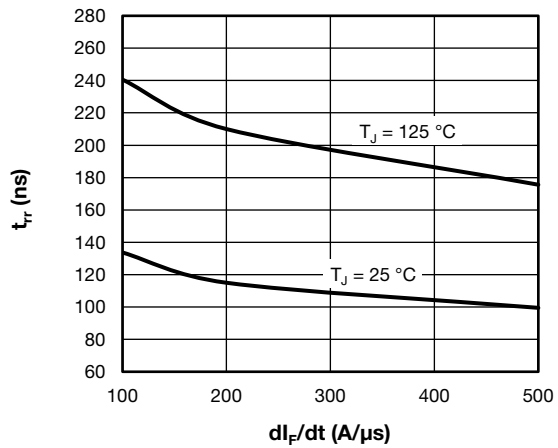


Fig. 16 - Typical Diode Reverse Recovery Time vs. di_F/dt
 $V_{rr} = 200\text{ V}$, $I_F = 50\text{ A}$

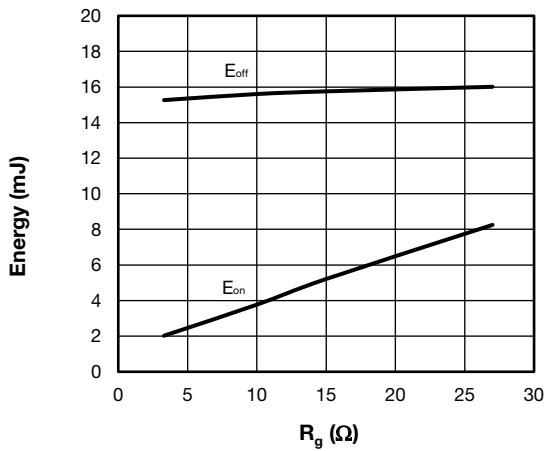


Fig. 14 - Typical IGBT Energy Loss vs. R_g
 $T_J = 125^\circ\text{C}$, $V_{CC} = 300\text{ V}$, $I_C = 100\text{ A}$, $V_{GE} = 15\text{ V}$, $L = 500\ \mu\text{H}$

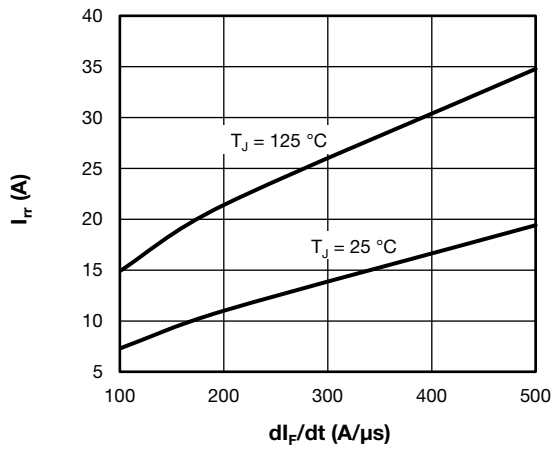


Fig. 17 - Typical Diode Reverse Recovery Current vs. di_F/dt
 $V_{rr} = 200\text{ V}$, $I_F = 50\text{ A}$

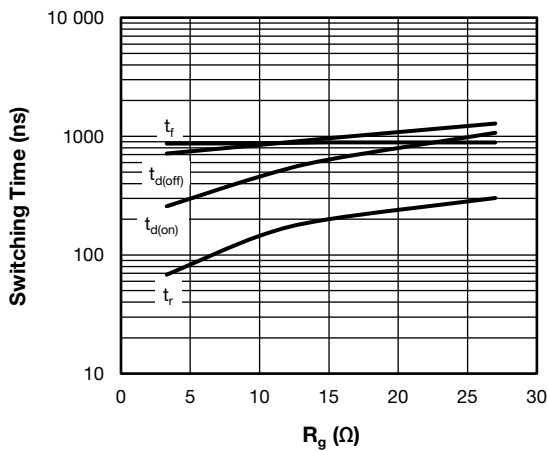


Fig. 15 - Typical IGBT Switching Time vs. R_g
 $T_J = 125^\circ\text{C}$, $V_{CC} = 300\text{ V}$, $I_C = 100\text{ A}$, $V_{GE} = 15\text{ V}$, $L = 500\ \mu\text{H}$

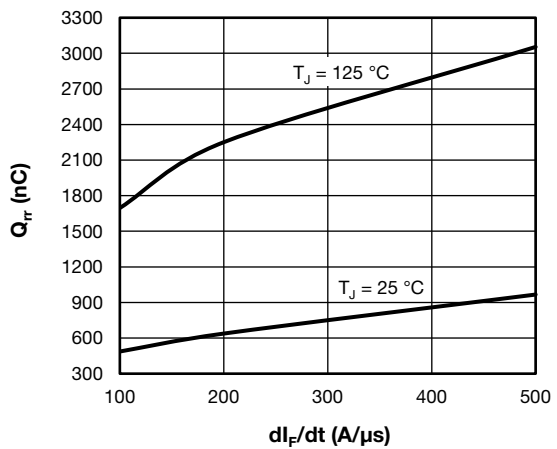


Fig. 18 - Typical Diode Reverse Recovery Charge vs. di_F/dt
 $V_{rr} = 200\text{ V}$, $I_F = 50\text{ A}$

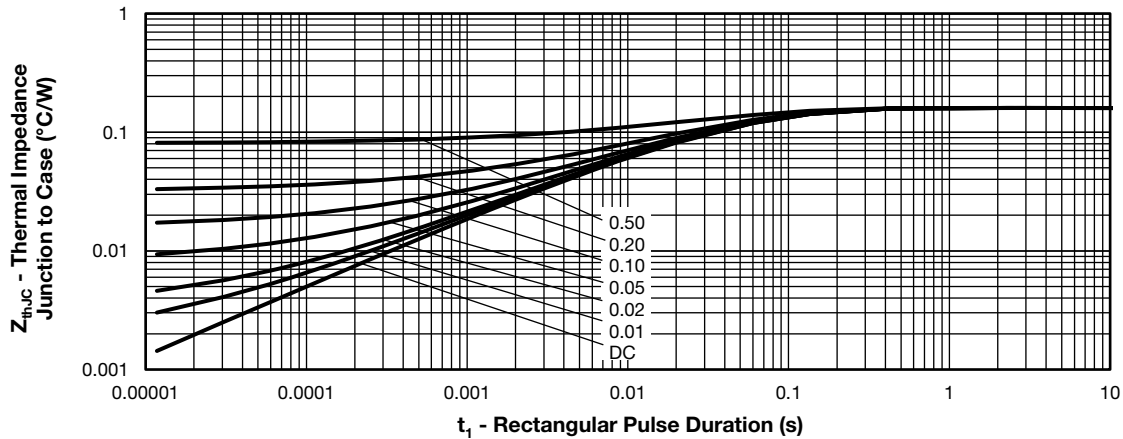


Fig. 19 - Maximum Thermal Impedance Z_{thJC} Characteristics - (IGBT)

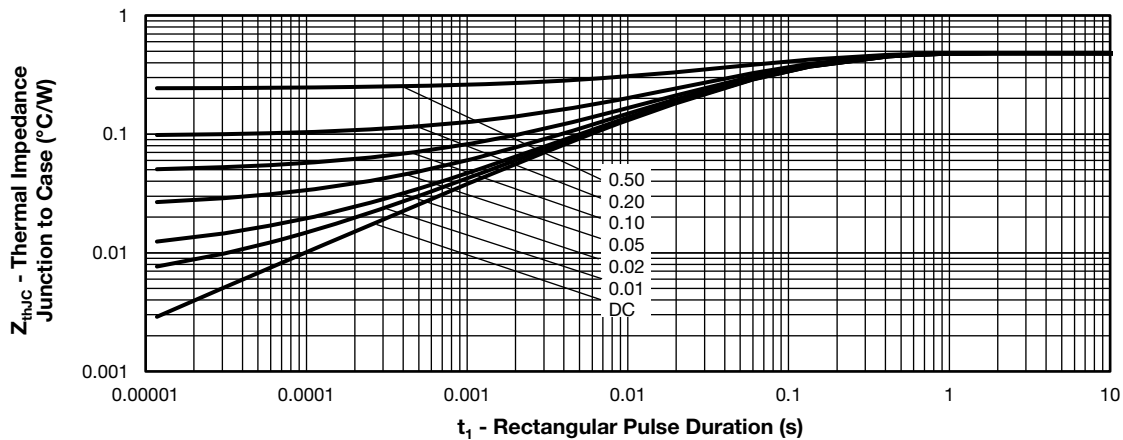


Fig. 20 - Maximum Thermal Impedance Z_{thJC} Characteristics - (Diode)

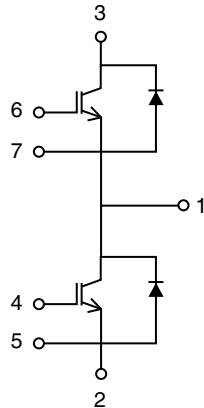
ORDERING INFORMATION TABLE

Device code	VS-	GP	100	T	S	60	S	F	PbF
	①	②	③	④	⑤	⑥	⑦	⑧	⑨

- 1** - Vishay Semiconductors product
- 2** - IGBT die technology (GP = Trench PT)
- 3** - Current rating (100 = 100 A)
- 4** - Circuit configuration (T = Half bridge)
- 5** - Package indicator (S = INT-A-PAK)
- 6** - Voltage code (60 = 600 V)
- 7** - Speed/type (S = standard speed IGBT)
- 8** - Diode type
- 9** - None = Standard production; PbF = Lead (Pb)-free



CIRCUIT CONFIGURATION

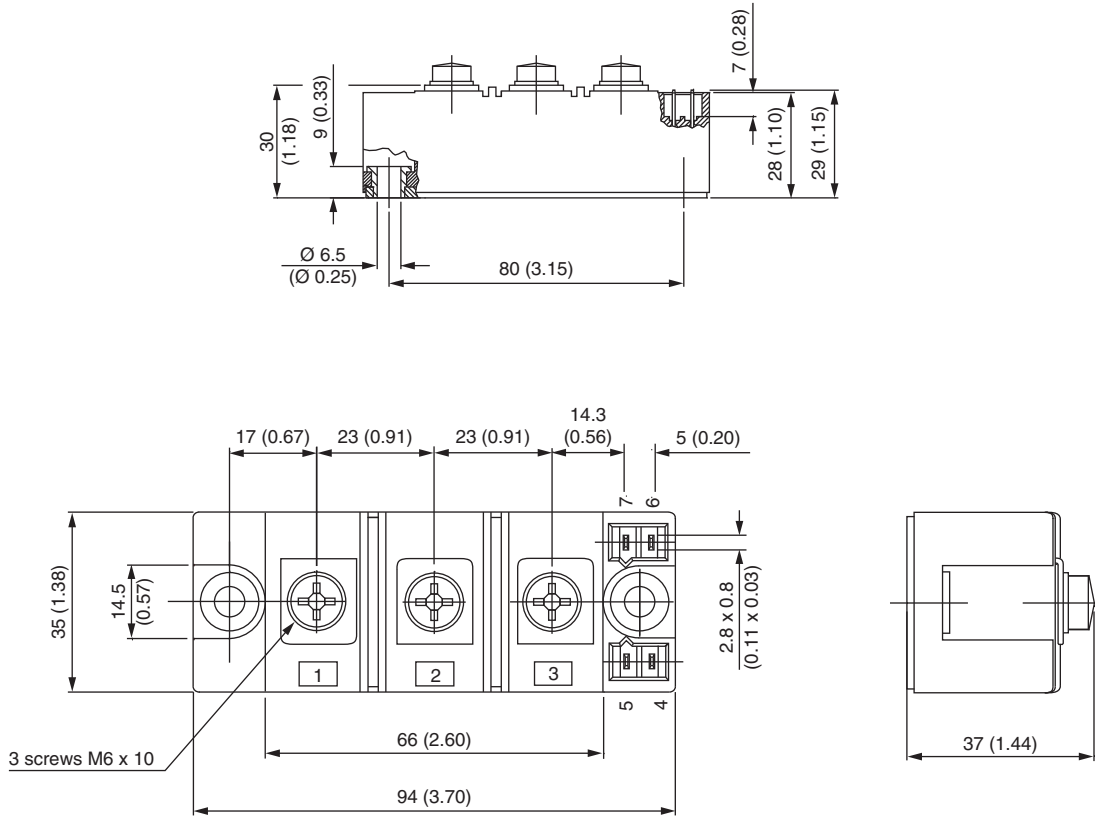


LINKS TO RELATED DOCUMENTS	
Dimensions	www.vishay.com/doc?95173



INT-A-PAK IGBT

DIMENSIONS in millimeters (inches)





Disclaimer

ALL PRODUCT, PRODUCT SPECIFICATIONS AND DATA ARE SUBJECT TO CHANGE WITHOUT NOTICE TO IMPROVE RELIABILITY, FUNCTION OR DESIGN OR OTHERWISE.

Vishay Intertechnology, Inc., its affiliates, agents, and employees, and all persons acting on its or their behalf (collectively, "Vishay"), disclaim any and all liability for any errors, inaccuracies or incompleteness contained in any datasheet or in any other disclosure relating to any product.

Vishay makes no warranty, representation or guarantee regarding the suitability of the products for any particular purpose or the continuing production of any product. To the maximum extent permitted by applicable law, Vishay disclaims (i) any and all liability arising out of the application or use of any product, (ii) any and all liability, including without limitation special, consequential or incidental damages, and (iii) any and all implied warranties, including warranties of fitness for particular purpose, non-infringement and merchantability.

Statements regarding the suitability of products for certain types of applications are based on Vishay's knowledge of typical requirements that are often placed on Vishay products in generic applications. Such statements are not binding statements about the suitability of products for a particular application. It is the customer's responsibility to validate that a particular product with the properties described in the product specification is suitable for use in a particular application. Parameters provided in datasheets and/or specifications may vary in different applications and performance may vary over time. All operating parameters, including typical parameters, must be validated for each customer application by the customer's technical experts. Product specifications do not expand or otherwise modify Vishay's terms and conditions of purchase, including but not limited to the warranty expressed therein.

Except as expressly indicated in writing, Vishay products are not designed for use in medical, life-saving, or life-sustaining applications or for any other application in which the failure of the Vishay product could result in personal injury or death. Customers using or selling Vishay products not expressly indicated for use in such applications do so at their own risk. Please contact authorized Vishay personnel to obtain written terms and conditions regarding products designed for such applications.

No license, express or implied, by estoppel or otherwise, to any intellectual property rights is granted by this document or by any conduct of Vishay. Product names and markings noted herein may be trademarks of their respective owners.

Material Category Policy

Vishay Intertechnology, Inc. hereby certifies that all its products that are identified as RoHS-Compliant fulfill the definitions and restrictions defined under Directive 2011/65/EU of The European Parliament and of the Council of June 8, 2011 on the restriction of the use of certain hazardous substances in electrical and electronic equipment (EEE) - recast, unless otherwise specified as non-compliant.

Please note that some Vishay documentation may still make reference to RoHS Directive 2002/95/EC. We confirm that all the products identified as being compliant to Directive 2002/95/EC conform to Directive 2011/65/EU.

Vishay Intertechnology, Inc. hereby certifies that all its products that are identified as Halogen-Free follow Halogen-Free requirements as per JEDEC JS709A standards. Please note that some Vishay documentation may still make reference to the IEC 61249-2-21 definition. We confirm that all the products identified as being compliant to IEC 61249-2-21 conform to JEDEC JS709A standards.

Компания «Океан Электроники» предлагает заключение долгосрочных отношений при поставках импортных электронных компонентов на взаимовыгодных условиях!

Наши преимущества:

- Поставка оригинальных импортных электронных компонентов напрямую с производств Америки, Европы и Азии, а так же с крупнейших складов мира;
- Широкая линейка поставок активных и пассивных импортных электронных компонентов (более 30 млн. наименований);
- Поставка сложных, дефицитных, либо снятых с производства позиций;
- Оперативные сроки поставки под заказ (от 5 рабочих дней);
- Экспресс доставка в любую точку России;
- Помощь Конструкторского Отдела и консультации квалифицированных инженеров;
- Техническая поддержка проекта, помощь в подборе аналогов, поставка прототипов;
- Поставка электронных компонентов под контролем ВП;
- Система менеджмента качества сертифицирована по Международному стандарту ISO 9001;
- При необходимости вся продукция военного и аэрокосмического назначения проходит испытания и сертификацию в лаборатории (по согласованию с заказчиком);
- Поставка специализированных компонентов военного и аэрокосмического уровня качества (Xilinx, Altera, Analog Devices, Intersil, Interpoint, Microsemi, Actel, Aeroflex, Peregrine, VPT, Syfer, Eurofarad, Texas Instruments, MS Kennedy, Miteq, Cobham, E2V, MA-COM, Hittite, Mini-Circuits, General Dynamics и др.);

Компания «Океан Электроники» является официальным дистрибьютором и эксклюзивным представителем в России одного из крупнейших производителей разъемов военного и аэрокосмического назначения «JONHON», а так же официальным дистрибьютором и эксклюзивным представителем в России производителя высокотехнологичных и надежных решений для передачи СВЧ сигналов «FORSTAR».



JONHON

«JONHON» (основан в 1970 г.)

Разъемы специального, военного и аэрокосмического назначения:

(Применяются в военной, авиационной, аэрокосмической, морской, железнодорожной, горно- и нефтедобывающей отраслях промышленности)

«FORSTAR» (основан в 1998 г.)

ВЧ соединители, коаксиальные кабели, кабельные сборки и микроволновые компоненты:

(Применяются в телекоммуникациях гражданского и специального назначения, в средствах связи, РЛС, а так же военной, авиационной и аэрокосмической отраслях промышленности).



Телефон: 8 (812) 309-75-97 (многоканальный)

Факс: 8 (812) 320-03-32

Электронная почта: ocean@oceanchips.ru

Web: <http://oceanchips.ru/>

Адрес: 198099, г. Санкт-Петербург, ул. Калинина, д. 2, корп. 4, лит. А