

AUTOMOTIVE GRADE 60/40V HIGH-SIDE CURRENT MONITOR

Description

The ZXCT1080Q and ZXCT1081Q are high side current sense monitors with a voltage output and a fixed gain of 10. Using this device eliminates the need to disrupt the ground plane when sensing a load current.

The wide input voltage range of 60V and 40V, respectively, down to as low as 3V make it suitable for a range of automotive applications with 60V and 40V load dump withstand capabilities.

The separate supply pin (V_{CC}) allows the device to continue functioning under short circuit conditions.

The ZXCT1080Q and ZXCT1081Q have an extended ambient operating temperature range of -40°C to 125°C enabling it to be used in a wide range of automotive applications including.

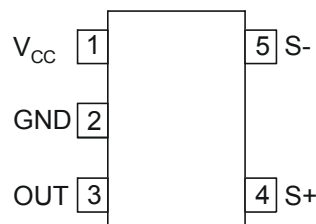
The ZXCT1080Q and ZXCT1081Q have been qualified to AEC-Q100 Grade 1 and are Automotive Grade supporting PPAPs.

Features

- Accurate high-side current sensing
 - ZXCT1080Q : 3V to 60V continuous high side voltage
 - ZXCT1081Q : 3V to 40V continuous high side voltage
- -40°C to $+125^{\circ}\text{C}$ temperature range
- Output voltage scaling x10
- 4.5V to 12V V_{CC} range
- Low quiescent current:
 - 80 μA supply pin
 - 27 μA I_{S+}
- Green Molding in SOT25
 - **Totally Lead-Free & Fully RoHS Compliant (Notes 1 & 2)**
 - **Halogen and Antimony Free. "Green" Device (Note 3)**
- Automotive Grade
 - **Qualified to AEC-Q100 Standards for High Reliability**
 - **PPAP Capable (Note 4)**

- Notes:
1. No purposely added lead. Fully EU Directive 2002/95/EC (RoHS) & 2011/65/EU (RoHS 2) compliant.
 2. See http://www.diodes.com/quality/lead_free.html for more information about Diodes Incorporated's definitions of Halogen- and Antimony-free, "Green" and Lead-free.
 3. Halogen- and Antimony-free "Green" products are defined as those which contain <900ppm bromine, <900ppm chlorine (<1500ppm total Br + Cl) and <1000ppm antimony compounds.
 4. Automotive products are AEC-Q100 qualified and are PPAP capable. Automotive, AEC-Q100 and standard products are electrically and thermally the same, except where specified. For more information, please refer to http://www.diodes.com/quality/product_compliance_definitions/.

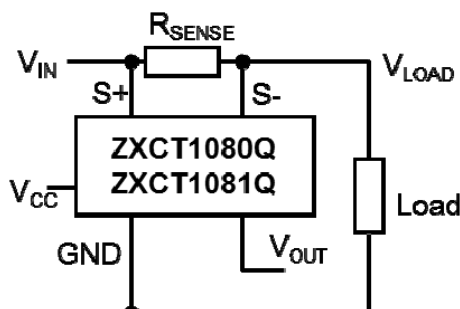
Pin Assignments



Applications

- Automotive current measurement
- Battery management
- Over-current measurement

Typical Application Circuit



Pin Descriptions

| Pin | Name | Function | | |
|-----|-----------------|---|---------------------------------|---------------------------------|
| | | Common | ZXCT1080Q | ZXCT1081Q |
| 1 | V _{CC} | This is the analogue supply and provides power to internal circuitry | — | — |
| 2 | GND | Ground pin | — | — |
| 3 | OUT | Output voltage pin. NMOS source follower with 20µA bias to ground | — | — |
| 4 | S+ | This is the positive input of the current monitor. The current through this pin varies with differential sense voltage | Input range from 60V down to 3V | Input range from 40V down to 3V |
| 5 | S- | This is the negative input of the current monitor. | | |

Absolute Maximum Ratings (@T_A = +25°C, unless otherwise specified.)

| Parameter | | Rating | Unit |
|---|----------------------|-----------------------------------|------|
| Continuous voltage on S- and S+ | ZXCT1080Q (Note 5) | -0.6 to 65 | V |
| | ZXCT1081Q (Note 5) | -0.6 to 45 | |
| Transient voltage on S- and S+ | ZXCT1081Q (Note 5) | -0.6 to 65 | V |
| Voltage on all other pins | | -0.6 to +14 | V |
| Differential sense voltage, V _{SENSE} (Note 6) | | 800 | mV |
| Operating temperature | | -40 to +125 | °C |
| Storage Temperature | | -55 to +150 | °C |
| Maximum Junction Temperature | | +125 | °C |
| Package Power Dissipation (Note 7) | | 300 (@ T _A = +25°C) | mW |
| ESD Ratings | | | |
| HBM ESD | Human Body Model | 1000 | V |
| MM ESD | Machine Model | 150 | V |
| CDM ESD | Charged Device Model | TBD | V |

Caution: Stresses greater than the 'Absolute Maximum Ratings' specified above, may cause permanent damage to the device. These are stress ratings only; functional operation of the device at conditions between maximum recommended operating conditions and absolute maximum ratings is not implied. Device reliability may be affected by exposure to absolute maximum rating conditions for extended periods of time.

Semiconductor devices are ESD sensitive and may be damaged by exposure to ESD events. Suitable ESD precautions should be taken when handling and transporting these devices.

- Notes:
- ZXCT1080 has a maximum transient and continuous voltage of 65V on the S+ and S- pin. The ZXCT1081 has a maximum continuous of 45V, it however can withstand transient up to 65V.
 - V_{SENSE} is defined as the differential voltage between S+ and S- pins
 - Assumes θ_{JA} = 420°C/W

Recommended Operating Conditions

| Symbol | Parameter | Min | Max | Units |
|--------------------|--|-----|-----------|-------|
| V _{IN} | Common-mode Sense+ Input Range | 3 | 60 | V |
| | | | ZXCT1081Q | |
| V _{CC} | Supply Voltage Range | 4.5 | 12 | V |
| V _{SENSE} | Differential Sense Input Voltage Range | 0 | 0.15 | V |
| V _{OUT} | Output Voltage Range (Note 8) | 0 | 1.5 | V |
| T _A | Ambient Temperature Range | -40 | +125 | °C |

Note: 8. Based on 10x V_{SENSE}

Electrical Characteristics (@ $V_{IN} = V_{S+} = 12V$, $V_{CC} = 5V$, V_{SENSE} (Note 6) = 100mV, $T_A = +25^\circ C$, unless otherwise specified.)

| Symbol | Parameter | Conditions | T_A | Min | Typ | Max | Units | |
|--------------|--------------------------------------|--------------------------------------|------------------------|------------|------|-----|---------|---------|
| I_{CC} | V_{CC} Supply Current | $V_{CC} = 12V$, $V_{SENSE} = 0V$ | ZXCT1080Q ZXCT1081Q | +25°C | 40 | 80 | 120 | μA |
| | | | ZXCT1080Q | Full range | — | — | 145 | |
| I_{S+} | S+ Input Current | $V_{SENSE} = 0V$ | ZXCT1080Q | +25°C | 15 | 27 | 42 | μA |
| | | | ZXCT1081Q | | 15 | 30 | 60 | |
| | | | ZXCT1080Q | Full range | — | — | 60 | |
| I_{S-} | S- Input Current | $V_{SENSE} = 0V$ | ZXCT1080Q | +25°C | 15 | 40 | 80 | nA |
| | | | ZXCT1081Q | | 10 | | | |
| $V_{O(0)}$ | Zero V_{SENSE} error (Note 9) | | ZXCT1080Q ZXCT1081Q | +25°C | 0 | — | 35 | mV |
| $V_{O(10)}$ | Output Offset Voltage (Note 10) | $V_{SENSE} = 10mV$ | ZXCT1080Q | +25°C | -25 | — | +25 | mV |
| | | | ZXCT1081Q | | -30 | | +30 | |
| | | | ZXCT1080Q | Full range | -55 | — | +55 | |
| Gain | $\Delta V_{OUT}/\Delta V_{SENSE}$ | $V_{SENSE} = 10mV$ to 150mV | ZXCT1080Q | +25°C | 9.9 | 10 | 10.1 | V/V |
| | | | ZXCT1081Q | | 9.95 | | 10.05 | |
| | | | ZXCT1080Q | Full range | 9.8 | — | 10.2 | |
| $V_{OUT TC}$ | V_{OUT} variation with temperature | — | — | — | 30 | — | ppm/°C | |
| A_{CC} | Total output error | — | — | -3 | — | 3 | % | |
| I_{OH} | Output Source Current | $\Delta V_{OUT} = -30mV$ | — | — | 1 | — | mA | |
| I_{OL} | Output Sink Current | $\Delta V_{OUT} = +30mV$ | — | — | 20 | — | μA | |
| PSRR | V_{CC} Supply Rejection Ratio | $V_{CC} = 4.5V$ to 12V | — | 54 | 60 | — | dB | |
| CMRR | Common-Mode Sense Rejection Ratio | $V_{S+} = 60V$ to 3V | ZXCT1080Q | — | 68 | 80 | — | dB |
| | | $V_{S+} = 40V$ to 3V | ZXCT1081Q | | 60 | 75 | | |
| BW | -3dB small signal bandwidth | $V_{SENSE (AC)} = 10mV_{pp}$ | — | — | 500 | — | kHz | |

- Notes: 6. $V_{SENSE} = "V_{S+}" - "V_{S-}"$
9. The ZXCT1080Q/81Q operates from a positive power rail and the internal voltage-current converter current flow is unidirectional; these result in the output offset voltage for $V_{SENSE} = 0V$ always being positive.
10. For $V_{SENSE} > 10mV$, the internal voltage-current converter is fully linear. This enables a true offset to be defined and used. $V_{O(10)}$ is expressed as the variance about an output voltage of 100mV>.

Typical Characteristics (@ $V_{IN} = 12V$, $V_{CC} = 5V$, $V_{SENSE+} = 12V$, $V_{SENSE} = 100mV$, $T_A = +25^\circ C$, unless otherwise specified.)

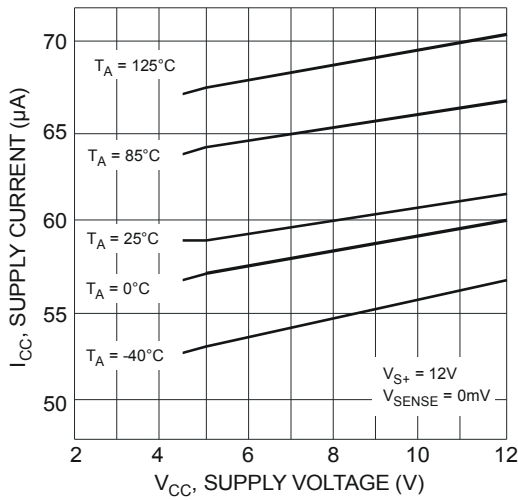


Fig. 1 Supply Current

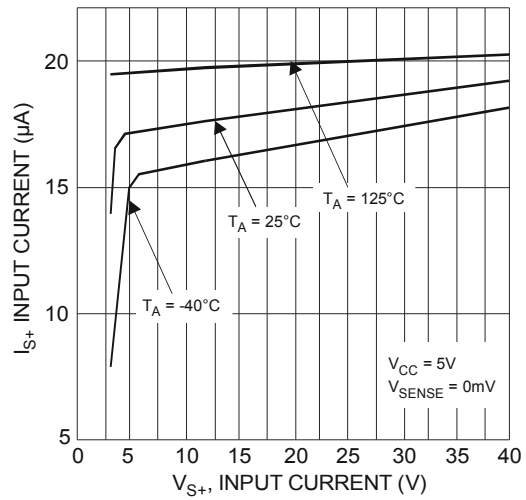


Fig. 2 Input Current

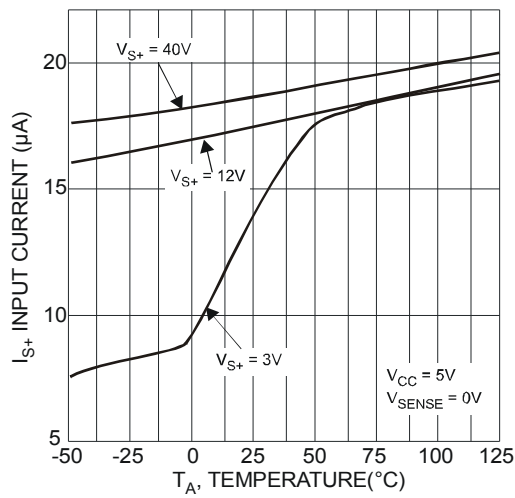


Fig. 3 Input Current

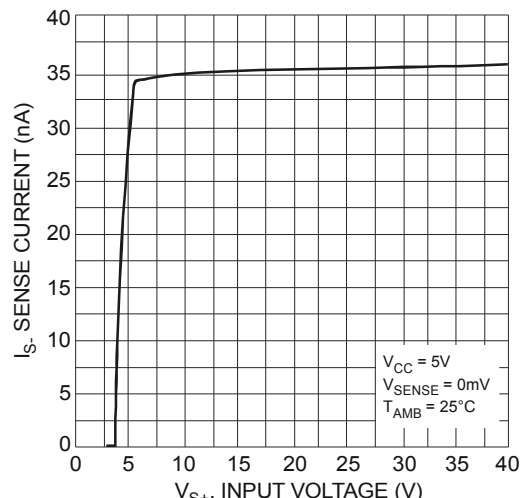


Fig. 4 Sense Current

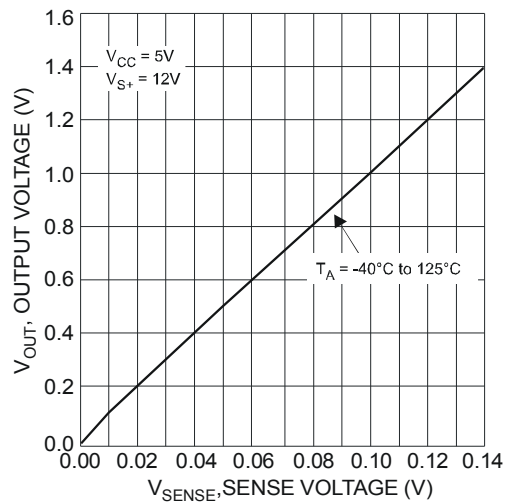


Fig. 5 Output Voltage

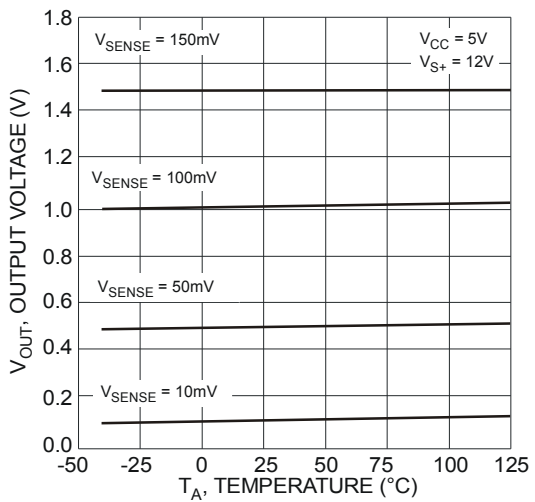


Fig. 6 Output Voltage

Typical Characteristics (cont.) (@ $V_{IN} = 12V$, $V_{CC} = 5V$, $V_{SENSE+} = 12V$, $V_{SENSE} = 100mV$, $T_A = +25^\circ C$, unless otherwise specified.)

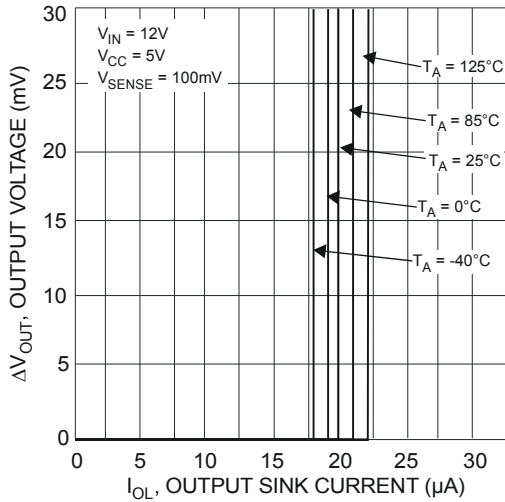


Fig. 7 Output Current Sink

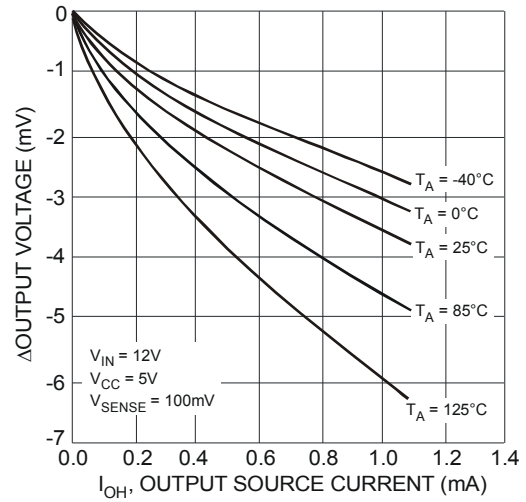


Fig. 8 Output Current Source

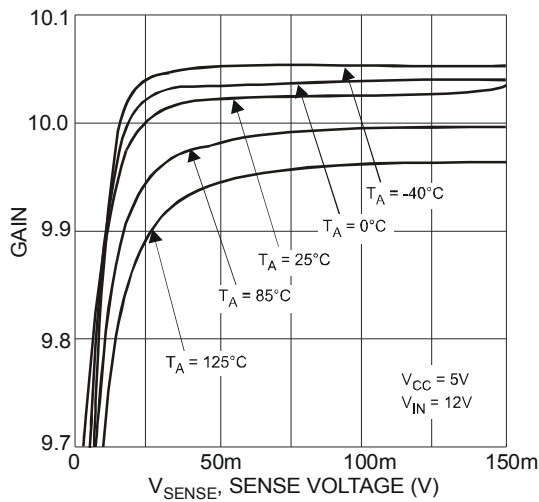


Fig. 9 Differential gain

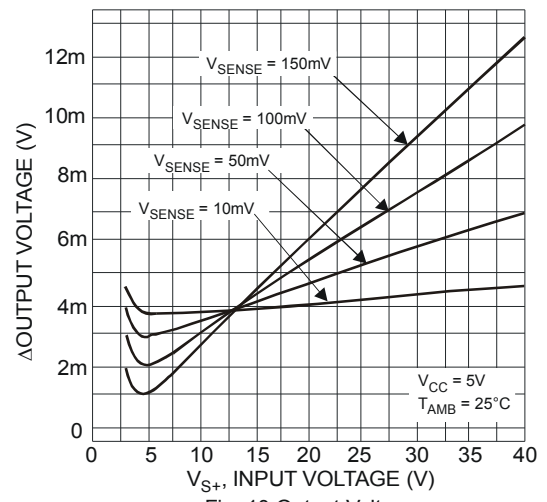


Fig. 10 Output Voltage

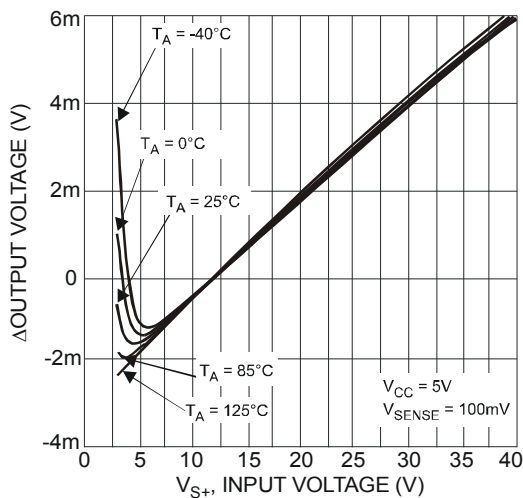


Fig. 11 Output Voltage

Typical Characteristics (cont.) (@ $V_{IN} = 12V$, $V_{CC} = 5V$, $V_{SENSE+} = 12V$, $V_{SENSE} = 100mV$, $T_A = +25^{\circ}C$, unless otherwise specified.)

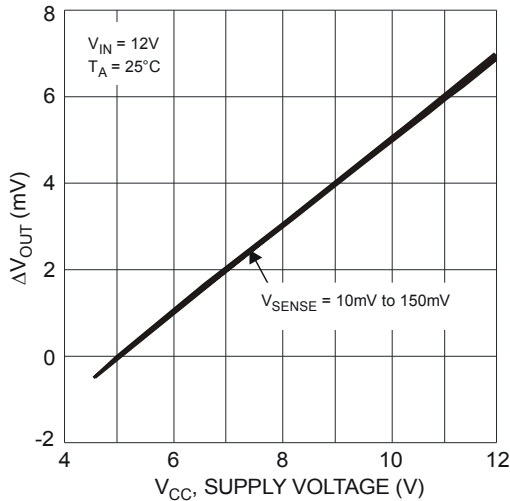


Fig. 12 Normalized Output Voltage

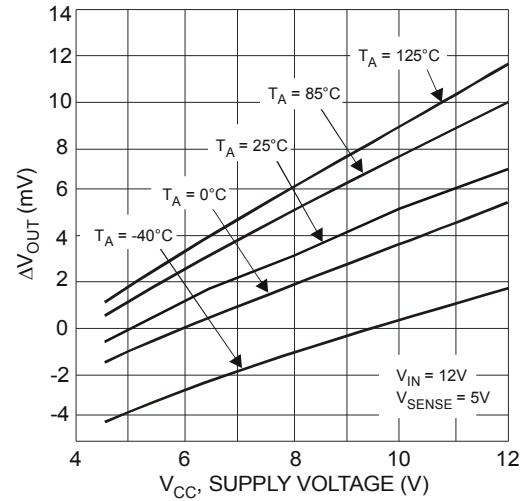


Fig. 13 Normalized Output Voltage

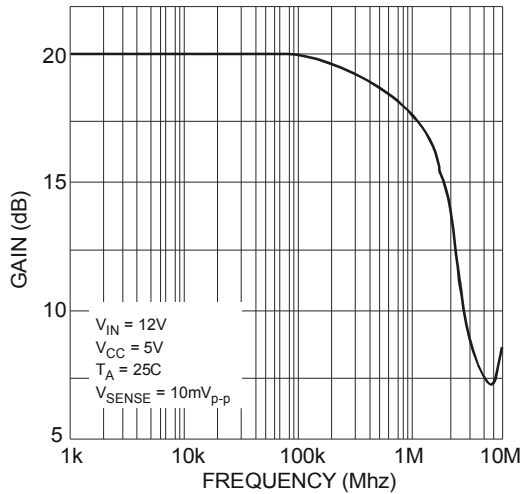


Fig. 14 Small Signal Bandwidth

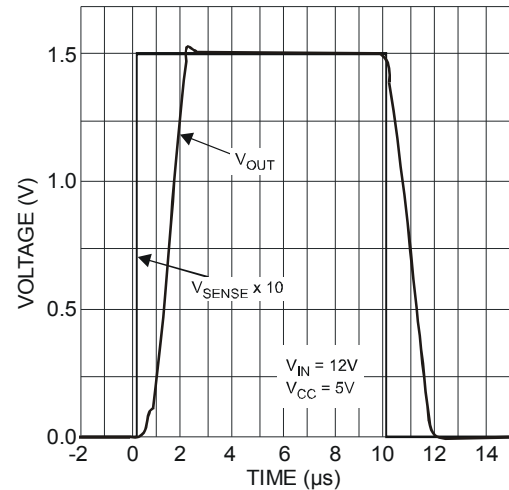


Fig. 15 Large Signal Pulse Response

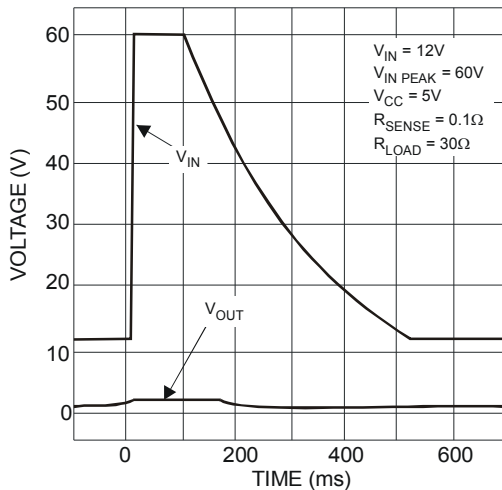


Fig. 16 Load Dump Waveform

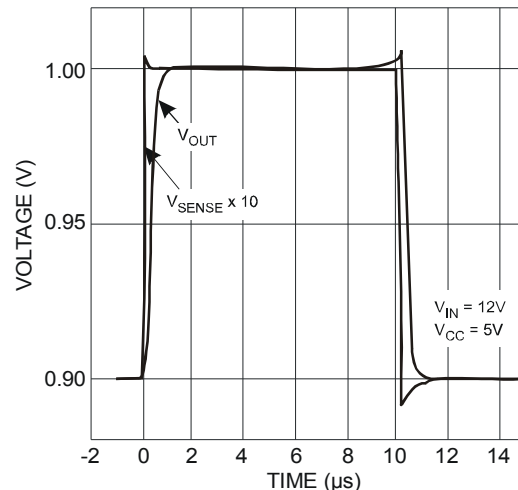


Fig. 17 Small Signal Pulse Response

Typical Characteristics (cont.) (@ $V_{IN} = 12V$, $V_{CC} = 5V$, $V_{SENSE+} = 12V$, $V_{SENSE-} = 100mV$, $T_A = +25^\circ C$, unless otherwise specified.)

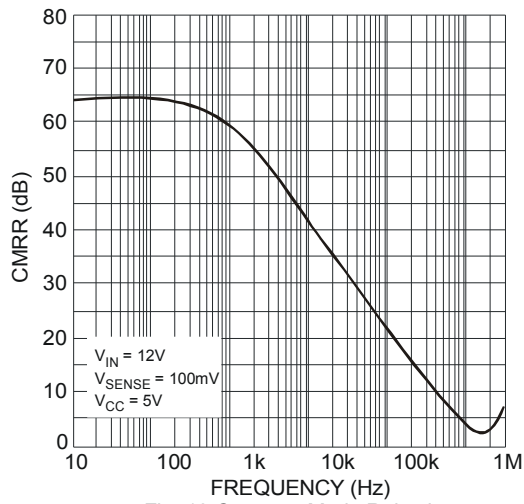


Fig. 18 Common Mode Rejection

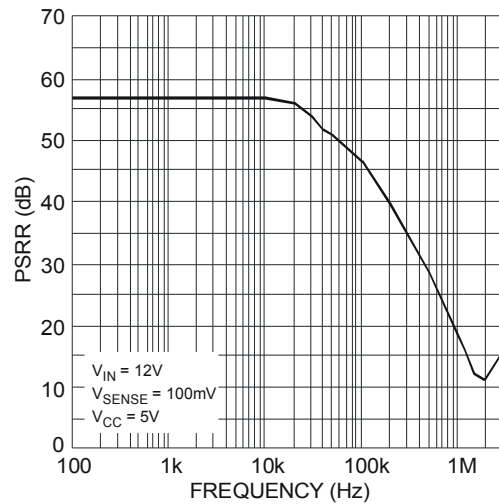


Fig. 19 Supply Rejection

Application Information

The ZXCT1080Q and ZXCT1081Q have been designed to allow them to operate with 5V supply rails while sensing common mode signals up to 60V and 40V respectively. This makes it well suited to a wide range of current measuring/monitoring applications that require the interface to 5V systems while sensing much higher voltages.

To allow this its V_{CC} pin can be used independently of S+.

Figure 20 shows the basic configuration of the ZXCT1080Q and ZXCT1081Q.

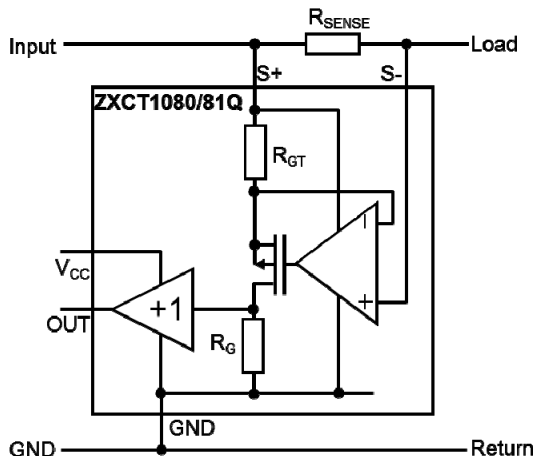


Fig. 20 Typical Configuration of ZXCT1080Q/81Q

Load current from the input is drawn through R_{SENSE} developing a voltage V_{SENSE} across the inputs of the ZXCT1080Q/81Q.

The internal amplifier forces V_{SENSE} across internal resistance R_{GT} causing a current to flow through MOSFET M1. This current is then converted to a voltage by R_G . A ratio of 10:1 between R_G and R_{GT} creates the fixed gain of 10. The output is then buffered by the unity gain buffer.

The gain equation of the ZXCT1080Q and ZXCT1081Q is:

$$V_{OUT} = I_L R_{SENSE} \frac{R_G}{R_{GT}} \times 1 = I_L \times R_{SENSE} \times 10$$

The maximum recommended differential input voltage, V_{SENSE} , is 150mV; it will however withstand voltages up to 800mV. This can be increased further by the inclusion of a resistor, R_{LIM} , between S- pin and the load (see figure 21); typical value is of the order of 10k.

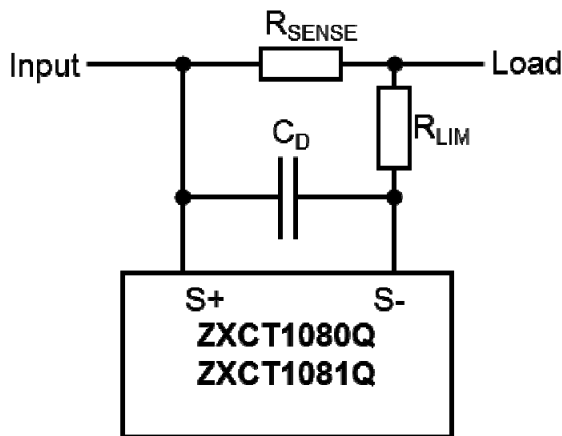


Fig. 21 Protection/Error Sources for ZXCT1080

Capacitor C_D provides high frequency transient decoupling when used with R_{LIM} ; typical values are of the order 10pF.

Application Information (cont.)

For best performance R_{SENSE} should be connected as close to the S+ (and SENSE) pins; minimizing any series resistance with R_{SENSE} .

When choosing appropriate values for R_{SENSE} a compromise must be reached between in-line signal loss (including potential power dissipation effects) and small signal accuracy.

Higher values for R_{SENSE} gives better accuracy at low load currents by reducing the inaccuracies due to internal offsets. For best operation the ZXCT1080Q/81Q has been designed to operate with V_{SENSE} of the order of 50mV to 150mV.

Current monitors' basic configuration is that of a unipolar voltage to current to voltage converter powered from a single supply rail. The internal amplifier at the heart of the current monitor may well have a bipolar offset voltage but the output cannot go negative; this results in current monitors saturating at very low sense voltages.

As a result of this phenomenon the ZXCT1080Q/81Q has been specified to operate in a linear manner over a V_{SENSE} range of 10mV to 150mV range, however it will still be monotonic down to V_{SENSE} of 0V.

It is for this very reason that Diodes has specified an input offset voltage ($V_{O(10)}$) at 10mV. The output voltage for any V_{SENSE} voltage from 10mV to 150mV can be calculated as follows:

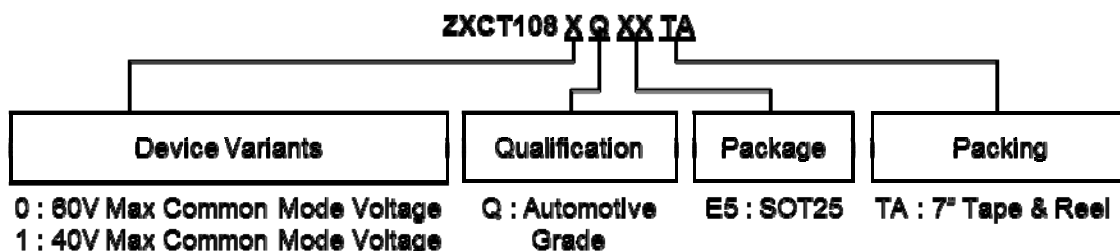
$$V_{OUT} = (V_{SENSE}) \times G + V_{(10)}$$

Alternatively the load current can be expressed as:

$$I_L = \frac{(V_{OUT} - V_{O(10)})}{G \times R_{SENSE}}$$

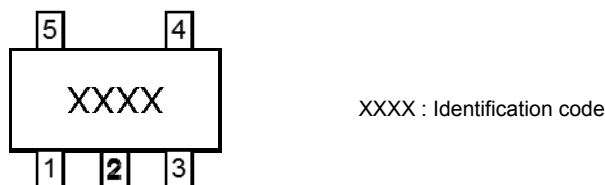
ZXCT1080Q/ ZXCT1081Q

Ordering Information



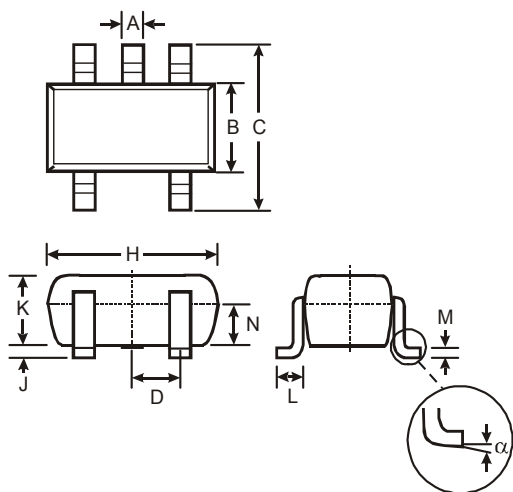
| Order Reference | Package | Package Code | Identification Code | Packing: 7" Tape and Reel | | | Qualification Grade |
|-----------------|---------|--------------|---------------------|---------------------------|------------|--------------------|---------------------|
| | | | | Quantity | Tape Width | Part Number Suffix | |
| ZXCT1080QE5TA | SOT25 | E5 | 1080 | 3000 | 8 | TA | Automotive Grade |
| ZXCT1081QE5TA | SOT25 | E5 | 1081 | 3000 | 8 | TA | Automotive Grade |

Marking Information



Package Outline Dimensions (All Dimensions in mm)

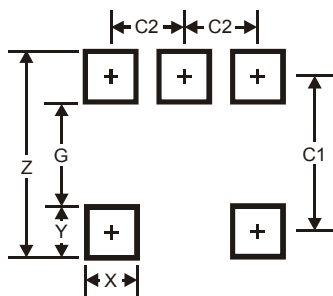
Please see AP02002 at <http://www.diodes.com/datasheets/ap02002.pdf> for latest version.



| SOT25 | | | |
|-----------------------------|-------|------|------|
| Dim | Min | Max | Typ |
| A | 0.35 | 0.50 | 0.38 |
| B | 1.50 | 1.70 | 1.60 |
| C | 2.70 | 3.00 | 2.80 |
| D | — | — | 0.95 |
| H | 2.90 | 3.10 | 3.00 |
| J | 0.013 | 0.10 | 0.05 |
| K | 1.00 | 1.30 | 1.10 |
| L | 0.35 | 0.55 | 0.40 |
| M | 0.10 | 0.20 | 0.15 |
| N | 0.70 | 0.80 | 0.75 |
| α | 0° | 8° | — |
| All Dimensions in mm | | | |

Suggested Pad Layout (All Dimensions in mm)

Please see AP02001 at <http://www.diodes.com/datasheets/ap02001.pdf> for latest version.



| Dimensions | Value (in mm) |
|------------|---------------|
| Z | 3.20 |
| G | 1.60 |
| X | 0.55 |
| Y | 0.80 |
| C1 | 2.40 |
| C2 | 0.95 |

IMPORTANT NOTICE

DIODES INCORPORATED MAKES NO WARRANTY OF ANY KIND, EXPRESS OR IMPLIED, WITH REGARDS TO THIS DOCUMENT, INCLUDING, BUT NOT LIMITED TO, THE IMPLIED WARRANTIES OF MERCHANTABILITY AND FITNESS FOR A PARTICULAR PURPOSE (AND THEIR EQUIVALENTS UNDER THE LAWS OF ANY JURISDICTION).

Diodes Incorporated and its subsidiaries reserve the right to make modifications, enhancements, improvements, corrections or other changes without further notice to this document and any product described herein. Diodes Incorporated does not assume any liability arising out of the application or use of this document or any product described herein; neither does Diodes Incorporated convey any license under its patent or trademark rights, nor the rights of others. Any Customer or user of this document or products described herein in such applications shall assume all risks of such use and will agree to hold Diodes Incorporated and all the companies whose products are represented on Diodes Incorporated website, harmless against all damages.

Diodes Incorporated does not warrant or accept any liability whatsoever in respect of any products purchased through unauthorized sales channel.

Should Customers purchase or use Diodes Incorporated products for any unintended or unauthorized application, Customers shall indemnify and hold Diodes Incorporated and its representatives harmless against all claims, damages, expenses, and attorney fees arising out of, directly or indirectly, any claim of personal injury or death associated with such unintended or unauthorized application.

Products described herein may be covered by one or more United States, international or foreign patents pending. Product names and markings noted herein may also be covered by one or more United States, international or foreign trademarks.

This document is written in English but may be translated into multiple languages for reference. Only the English version of this document is the final and determinative format released by Diodes Incorporated.

LIFE SUPPORT

Diodes Incorporated products are specifically not authorized for use as critical components in life support devices or systems without the express written approval of the Chief Executive Officer of Diodes Incorporated. As used herein:

- A. Life support devices or systems are devices or systems which:
 - 1. are intended to implant into the body, or
 - 2. support or sustain life and whose failure to perform when properly used in accordance with instructions for use provided in the labeling can be reasonably expected to result in significant injury to the user.
- B. A critical component is any component in a life support device or system whose failure to perform can be reasonably expected to cause the failure of the life support device or to affect its safety or effectiveness.

Customers represent that they have all necessary expertise in the safety and regulatory ramifications of their life support devices or systems, and acknowledge and agree that they are solely responsible for all legal, regulatory and safety-related requirements concerning their products and any use of Diodes Incorporated products in such safety-critical, life support devices or systems, notwithstanding any devices- or systems-related information or support that may be provided by Diodes Incorporated. Further, Customers must fully indemnify Diodes Incorporated and its representatives against any damages arising out of the use of Diodes Incorporated products in such safety-critical, life support devices or systems.

Copyright © 2014, Diodes Incorporated

www.diodes.com

Компания «Океан Электроники» предлагает заключение долгосрочных отношений при поставках импортных электронных компонентов на взаимовыгодных условиях!

Наши преимущества:

- Поставка оригинальных импортных электронных компонентов напрямую с производств Америки, Европы и Азии, а так же с крупнейших складов мира;
- Широкая линейка поставок активных и пассивных импортных электронных компонентов (более 30 млн. наименований);
- Поставка сложных, дефицитных, либо снятых с производства позиций;
- Оперативные сроки поставки под заказ (от 5 рабочих дней);
- Экспресс доставка в любую точку России;
- Помощь Конструкторского Отдела и консультации квалифицированных инженеров;
- Техническая поддержка проекта, помощь в подборе аналогов, поставка прототипов;
- Поставка электронных компонентов под контролем ВП;
- Система менеджмента качества сертифицирована по Международному стандарту ISO 9001;
- При необходимости вся продукция военного и аэрокосмического назначения проходит испытания и сертификацию в лаборатории (по согласованию с заказчиком);
- Поставка специализированных компонентов военного и аэрокосмического уровня качества (Xilinx, Altera, Analog Devices, Intersil, Interpoint, Microsemi, Actel, Aeroflex, Peregrine, VPT, Syfer, Eurofarad, Texas Instruments, MS Kennedy, Miteq, Cobham, E2V, MA-COM, Hittite, Mini-Circuits, General Dynamics и др.);

Компания «Океан Электроники» является официальным дистрибьютором и эксклюзивным представителем в России одного из крупнейших производителей разъемов военного и аэрокосмического назначения «JONHON», а так же официальным дистрибьютором и эксклюзивным представителем в России производителя высокотехнологичных и надежных решений для передачи СВЧ сигналов «FORSTAR».



JONHON

«JONHON» (основан в 1970 г.)

Разъемы специального, военного и аэрокосмического назначения:

(Применяются в военной, авиационной, аэрокосмической, морской, железнодорожной, горно- и нефтедобывающей отраслях промышленности)

«FORSTAR» (основан в 1998 г.)

ВЧ соединители, коаксиальные кабели, кабельные сборки и микроволновые компоненты:

(Применяются в телекоммуникациях гражданского и специального назначения, в средствах связи, РЛС, а так же военной, авиационной и аэрокосмической отраслях промышленности).



Телефон: 8 (812) 309-75-97 (многоканальный)

Факс: 8 (812) 320-03-32

Электронная почта: ocean@oceanchips.ru

Web: <http://oceanchips.ru/>

Адрес: 198099, г. Санкт-Петербург, ул. Калинина, д. 2, корп. 4, лит. А