

## Universal Precision Op Amp Evaluation Board in SC70 Package

by Giampaolo Marino, Soufiane Bendaoud, and Steve Ranta

### INTRODUCTION

The EVAL-PRAOPAMP-1KS is an evaluation board which accommodates single op amps in SC70 packages. It is meant to provide the user with multiple choices and extensive flexibility for different applications circuits and configurations. This board is not intended to be used with high frequency components or high speed amplifiers. However, it provides the user with many combinations for various circuit types including active filters, differential amplifiers, and external frequency compensation circuits. A few examples of application circuits are given in this application note.

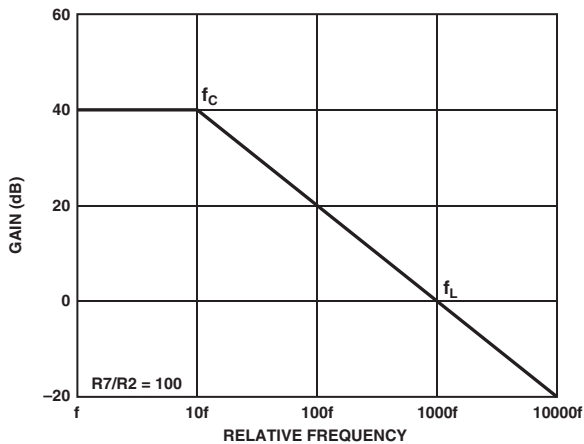
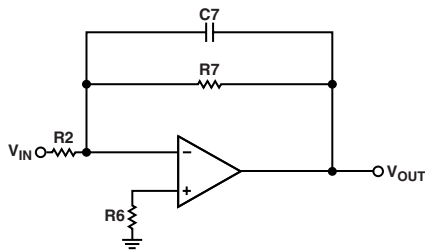


Figure 1. Simple Low-Pass Filter

### LOW-PASS FILTER

Figure 1 is a typical representation of a first-order low-pass filter. This circuit has a 6 dB per octave roll-off after a close-loop -3 dB point defined by  $f_C$ . Gain below this frequency is defined as the magnitude of R7 to R2. The circuit might be considered as an ac integrator for frequencies well above  $f_C$ ; however, the time domain response is that of a single RC, rather than an integral.

$$f_C = 1/(2\pi \times R7 \times C7); -3 \text{ dB frequency}$$

$$f_L = 1/(2\pi \times R2 \times C7); \text{unity gain frequency}$$

$$A_{cl} = -(R7/R2); \text{close loop gain}$$

R6 should be chosen equal to the parallel combination between R7 and R2 in order to minimize errors due to bias currents.

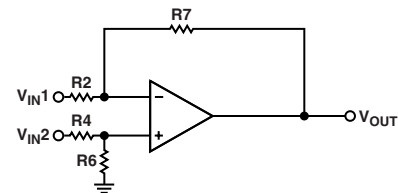


Figure 2. Difference Amplifier

### DIFFERENCE AMPLIFIER AND PERFORMANCE OPTIMIZATION

Figure 2 shows an op amp configured as a difference amplifier. The difference amplifier is the complement of the summing amplifier, and allows the subtraction of two voltages or the cancellation of a signal common to both inputs. The circuit shown in Figure 2 is useful as a computational amplifier in making a differential to single-ended conversion or in rejecting a common-mode signal. The output voltage  $V_{OUT}$  is comprised of two separate components:

1. A component  $V_{OUT1}$  due to  $V_{IN1}$  acting alone ( $V_{IN2}$  short circuited to ground.)
2. A component  $V_{OUT2}$  due to  $V_{IN2}$  acting alone ( $V_{IN1}$  short circuited to ground.)

The algebraic sum of these two components should be equal to  $V_{OUT}$ . By applying the principles expressed in the output voltage  $V_{OUT}$  components, and by letting  $R4 = R2$  and  $R7 = R6$ , then:

$$V_{OUT1} = V_{IN1} R7/R2$$

$$V_{OUT2} = -V_{IN2} R7/R2$$

$$V_{OUT} = V_{OUT1} + V_{OUT2} = (V_{IN1} - V_{IN2}) R7/R2$$

Difference amplifiers are commonly used in high accuracy circuits to improve the common-mode rejection ratio, typically known as CMRR.

For this type of application, CMRR depends upon how tightly matched resistors are used; poorly matched resistors result in a low value of CMRR.

To see how this works, consider a hypothetical source of error for resistor  $R7$  ( $1 - \text{error}$ ). Using the superposition principle and letting  $R4 = R2$  and  $R7 = R6$ , the output voltage would be as follows:

$$V_{OUT} = \left[ \frac{\left[ \frac{R7}{R2} \left( 1 - \frac{R2 + 2R7}{R2 + R7} \right) \times \frac{\text{error}}{2} \right]}{VD + \left( \frac{R7}{R2 + R7} \times \text{error} \right)} \right]$$

$$V_{DD} = V_{IN2} - V_{IN1}$$

From this equation,  $A_{CM}$  and  $A_{DM}$  can be defined as follows:

$$A_{CM} = R7/(R7 - R2) \times \text{error}$$

$$A_{DM} = R7/R2 \times \{1 - [(R2 + 2R7/R2 + R7) \times \text{error}/2]\}$$

These equations demonstrate that when there is not an error in the resistor values, the  $A_{CM} = 0$  and the amplifier responds only to the differential voltage being applied to its inputs; under these conditions, the CMRR of the circuit becomes highly dependent on the CMRR of the amplifier selected for this job.

As mentioned above, errors introduced by resistor mismatch can be a big drawback of discrete differential amplifiers, but there are different ways to optimize this circuit configuration:

1. The differential gain is directly related to the ratio  $R7/R2$ ; therefore, one way to optimize the performance of this circuit is to place the amplifier in a high gain configuration. When larger values for resistors  $R7$  and  $R6$  and smaller values for resistors  $R2$  and  $R4$  are selected, the higher the gain, the higher the CMRR. For example, when  $R7 = R6 = 10 \text{ k}\Omega$ , and  $R2 = R4 = 1 \text{ k}\Omega$ , and  $\text{error} = 0.1\%$ , CMRR improves to better than 80 dB. For high gain configuration, select amplifiers with very low  $I_{BIAS}$  and very high gain (such as the AD8551, AD8571, AD8603, and AD8605) to reduce errors.
2. Select resistors that have much tighter tolerance and accuracy. The more closely they are matched, the better the CMRR. For example, if a CMRR of 90 dB is needed, then match resistors to approximately 0.02%.

## CURRENT-TO-VOLTAGE CONVERTER

Current may be measured in two ways with an operational amplifier. Current can be converted to a voltage with a resistor and then amplified or injected directly into a summing node.

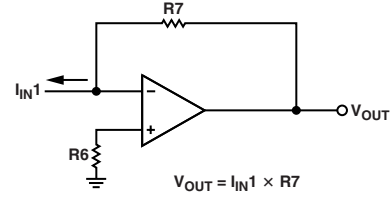


Figure 3. Current-to-Voltage Converter

Figure 3 is a typical representation of a current-to-voltage transducer. The input current is fed directly into the summing node and the amplifier output voltage changes to exactly the same current from the summing node through  $R7$ . The scale factor of this circuit is  $R7$  volts per amps. The only conversion error in this circuit is  $I_{BIAS}$ , which is summed algebraically with  $I_{IN}$ .

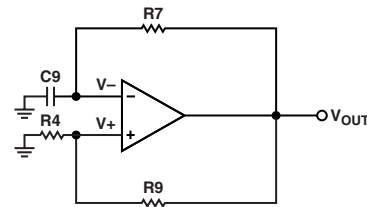


Figure 4. Bistable Multivibrator

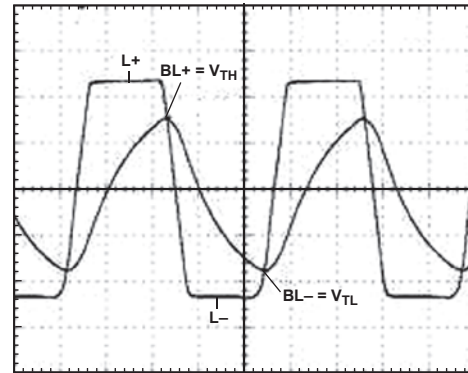


Figure 5. Output Response

## GENERATION OF SQUARE WAVEFORMS USING A BISTABLE MULTIVIBRATOR

A square waveform can be simply generated by arranging the amplifier for a bistable multivibrator to switch states periodically as Figure 5 shows.

Once the output of the amplifier reaches one of two possible levels, such as  $L+$ , capacitor  $C9$  charges toward this level through resistor  $R7$ . The voltage across  $C9$ , which is applied to the negative input terminal of the amplifier denoted as  $V-$ , then rises exponentially toward  $L+$  with a time constant  $\tau = C9R7$ . Meanwhile, the voltage

at the positive input terminal of the amplifier, denoted as  $V_+ = BL_+$ . This continues until the capacitor voltage reaches the positive threshold  $V_{TH}$ , at which point the bistable multivibrator switches to the other stable state in which  $V_O = L_-$  and  $V_+ = BL_-$ . This is shown in Figure 5.

The capacitor then begins to discharge, and its voltage,  $V_-$ , decreases exponentially toward  $L_-$ . This continues until  $V_-$  reaches the negative threshold  $V_{TL}$ , at which time the bistable multivibrator switches to the positive output state, and the cycle repeats itself.

It is important to note that the frequency of the square wave being generated,  $f_O$ , depends only on the external components being used. Any variation in  $L_+$  will cause  $V_+$  to vary in proportion, ensuring the same transition time and the same oscillation frequency. The maximum operating frequency is determined by the amplifier speed, which can be increased significantly by using faster devices.

The lowest operating frequency depends on the practical upper limits set by R7 and C9.

Using the name convention outlined on the PRA OPAMP evaluation board, the circuit should be connected as follows:

$B = R4 / (R4 + R9)$ ; feedback factor (noninverting input)

$T = 2R7 \times C9 \times \ln((1 + B) / (1 - B))$ ; period of oscillation

$f_O = 1 / T$ ; oscillation frequency

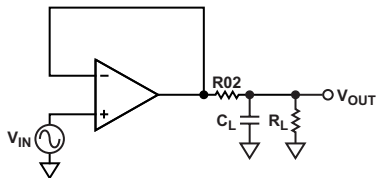


Figure 6. Series Resistor Compensation

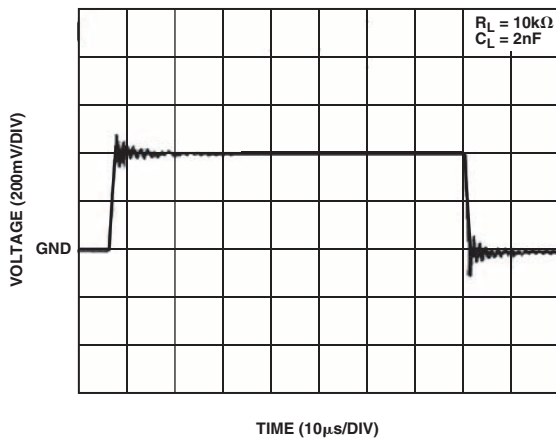


Figure 7. Capacitive Load Drive Without Resistor

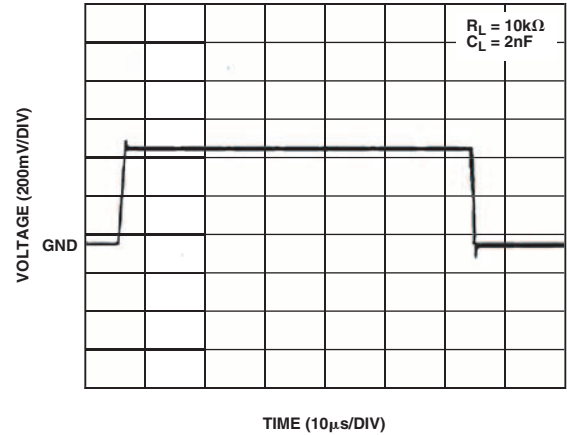


Figure 8. Capacitive Load Drive with Resistor

**EXTERNAL COMPENSATION TECHNIQUES**

**Series Resistor Compensation**

The use of external compensation networks may be required to optimize certain applications. Figure 6 is a typical representation of a series resistor compensation for stabilizing an op amp driving capacitive load. The stabilizing effect of the series resistor isolates the op amp output and the feedback network from the capacitive load. The required amount of series resistance depends on the part used, but values of 5 Ω to 50 Ω are usually sufficient to prevent local resonance. The disadvantages of this technique are a reduction in gain accuracy and extra distortion when driving nonlinear loads.

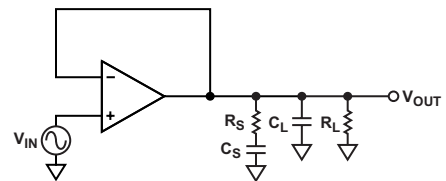


Figure 9. Snubber Network

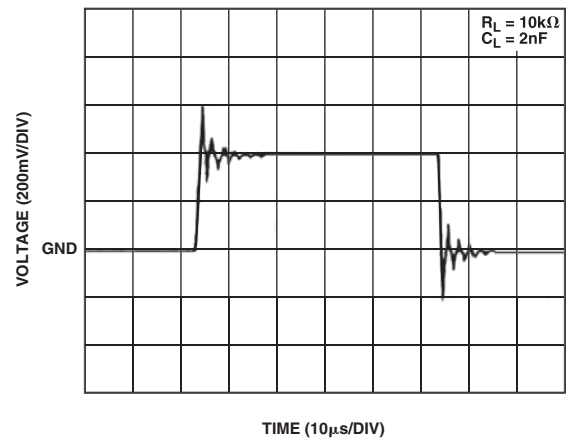
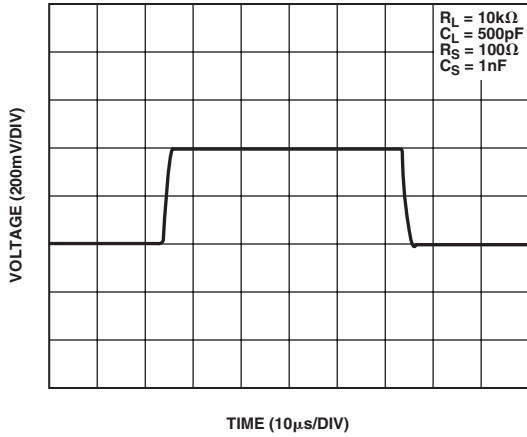


Figure 10. Capacitive Load Drive Without Snubber



**Snubber Network**

Another way to stabilize an op amp driving a capacitive load is with the use of a snubber, as shown in Figure 9. This method presents the significant advantage of not reducing the output swing because there is not any isolation resistor in the signal path. Also, the use of the snubber does not degrade the gain accuracy or cause extra distortion when driving a nonlinear load. The exact  $R_S$  and  $C_S$  combinations can be determined experimentally.

Figure 11. Capacitive Load Drive with the Snubber

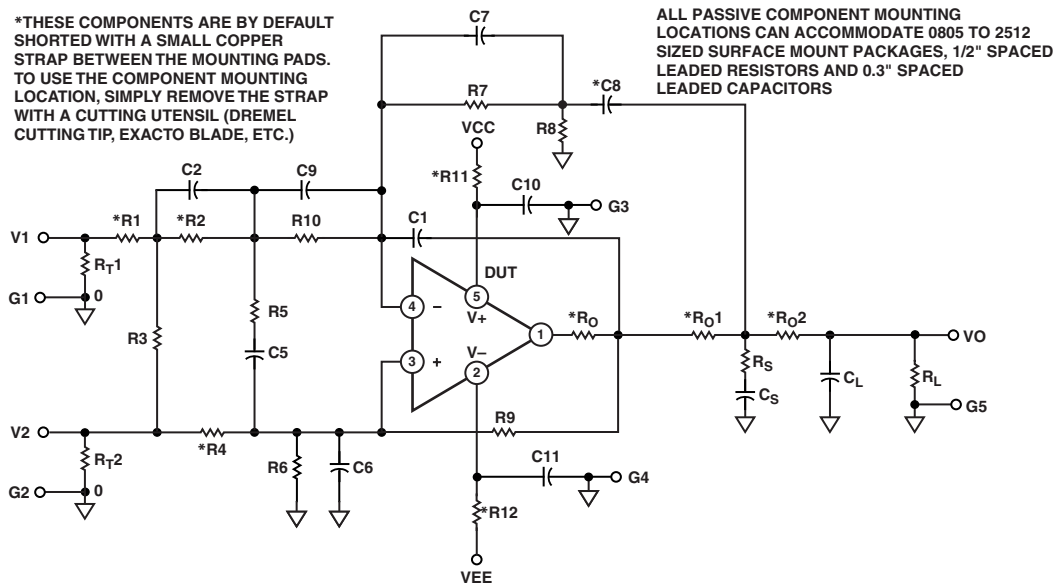


Figure 12. EVAL-PRAOPAMP-1KS Electrical Schematic

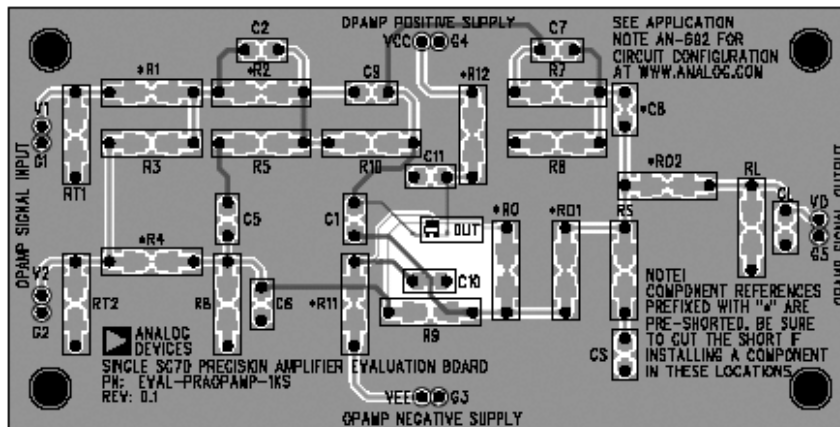


Figure 13. EVAL-PRAOPAMP-1KS Board Layout Patterns

Компания «Океан Электроники» предлагает заключение долгосрочных отношений при поставках импортных электронных компонентов на взаимовыгодных условиях!

Наши преимущества:

- Поставка оригинальных импортных электронных компонентов напрямую с производств Америки, Европы и Азии, а так же с крупнейших складов мира;
- Широкая линейка поставок активных и пассивных импортных электронных компонентов (более 30 млн. наименований);
- Поставка сложных, дефицитных, либо снятых с производства позиций;
- Оперативные сроки поставки под заказ (от 5 рабочих дней);
- Экспресс доставка в любую точку России;
- Помощь Конструкторского Отдела и консультации квалифицированных инженеров;
- Техническая поддержка проекта, помощь в подборе аналогов, поставка прототипов;
- Поставка электронных компонентов под контролем ВП;
- Система менеджмента качества сертифицирована по Международному стандарту ISO 9001;
- При необходимости вся продукция военного и аэрокосмического назначения проходит испытания и сертификацию в лаборатории (по согласованию с заказчиком);
- Поставка специализированных компонентов военного и аэрокосмического уровня качества (Xilinx, Altera, Analog Devices, Intersil, Interpoint, Microsemi, Actel, Aeroflex, Peregrine, VPT, Syfer, Eurofarad, Texas Instruments, MS Kennedy, Miteq, Cobham, E2V, MA-COM, Hittite, Mini-Circuits, General Dynamics и др.);

Компания «Океан Электроники» является официальным дистрибьютором и эксклюзивным представителем в России одного из крупнейших производителей разъемов военного и аэрокосмического назначения «**JONHON**», а так же официальным дистрибьютором и эксклюзивным представителем в России производителя высокотехнологичных и надежных решений для передачи СВЧ сигналов «**FORSTAR**».



## JONHON

«**JONHON**» (основан в 1970 г.)

Разъемы специального, военного и аэрокосмического назначения:

(Применяются в военной, авиационной, аэрокосмической, морской, железнодорожной, горно- и нефтедобывающей отраслях промышленности)

«**FORSTAR**» (основан в 1998 г.)

ВЧ соединители, коаксиальные кабели, кабельные сборки и микроволновые компоненты:

(Применяются в телекоммуникациях гражданского и специального назначения, в средствах связи, РЛС, а так же военной, авиационной и аэрокосмической отраслях промышленности).



Телефон: 8 (812) 309-75-97 (многоканальный)

Факс: 8 (812) 320-03-32

Электронная почта: [ocean@oceanchips.ru](mailto:ocean@oceanchips.ru)

Web: <http://oceanchips.ru/>

Адрес: 198099, г. Санкт-Петербург, ул. Калинина, д. 2, корп. 4, лит. А