

LTC5596
Linduino Shield 100MHz to 40 GHz
RMS Power Detector

DESCRIPTION

Demonstration circuit DC2870A is a Linduino® shield for Mean-Squared Power Detector LTC®5596. It is set up for quick evaluation of RMS RF power measurement using the Arduino/Linduino compatible platform and software download available [here](#). When connected to PC with USB cable, accurate power level can be monitored using the graphic user interface.

The LTC5596 is a wide dynamic range linear-in-dB Mean Squared RF Power Detector, operational from 100MHz to 40GHz. The Linduino (DC2026C) platform provides 10-bit ADC at 4.9mV/LSB resolution with 5V default reference voltage. Input dynamic range with 1dB accuracy is up to 35dB depending on frequency. The detector output slope is normally 6 LSB/dB. The DC2870A Demo Circuit is optimized for wide operational frequency signals up to 40GHz using the 2.9mm SMK edge mount connector. Input impedance is internally matched to 50Ω. It is suitable for RMS measurements of high crest factor waveforms up to 12dB peak-to-average. No external coupling capacitor is necessary if DC voltage at RF_{IN} pin is kept below 1.0V. On board 3.3V regulator provides power to

the shield by jumper JP1. Contact applications support for more information.

[Design files for this circuit board are available.](#)

ABSOLUTE MAXIMUM INPUT RATINGS

(Note 1)	
Supply Voltage(V _{CC}):	+3.8V
DC Voltage at RF _{IN} :	-0.3V to 1.0V
DC Voltage at FLTR:	-0.3V to 0.4V
DC Voltage at EN:	-0.3V to 3.8V
RF _{IN} Input Power-Average:	+15dBm
T _{JMAX}	150°C
Case Operating Temperature Range	-40°C to 105°C
Storage Temperature Range	-65°C to 150°C

Note 1: Voltage on all pins must not exceed V_{CC} + 0.3V or be less than -0.3V.

CAUTION: This part is sensitive to electrostatic discharge (ESD). Observe proper ESD precautions when handling the LTC5596.

All registered trademarks and trademarks are the property of their respective owners.

TEST SETUP

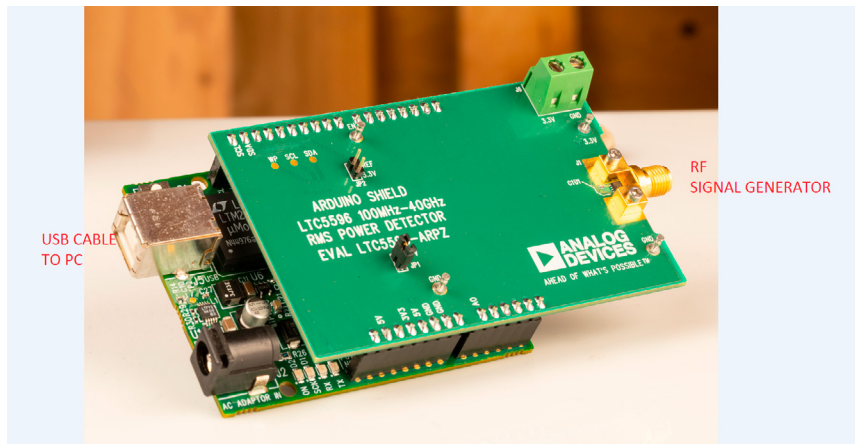


Figure 1. Test Setup for RF Performance Measurements

DEMO MANUAL DC2870A

NOTES ON TEST EQUIPMENT AND SETUP

- Use a high performance signal generator with accurate output power levels up to 40GHz, such as Rohde Schwarz SMF100A.
- Demo Board DC2870A includes the SMK 2.9mm connector for best performance up to 40GHz.
- Connecting cable for RF signal should be rated up to 40GHz for the best performance.
- Optional input attenuation can be used to improve return loss, but also shifts the log intercept point accordingly.

QUICK START PROCEDURE

1. Remove the DC2870A from its protective packaging in an ESD-safe working area, connect USB cable to PC(see Figure 1).
2. Set JP1 which provides the 3.3V to V_{CC} by the on board regulator.
3. Go to www.analog.com, download and install QuikEval if it's not yet installed.
4. The Eval Kit comes with a Linduino board pre-loaded with firmware. Follow Figure 2 to re-load the firmware if necessary, which can be downloaded from www.analog.com.
5. Download LTC5596 GUI, and install all necessary drivers onto PC from the LTC5596 product page. Follow instruction from QuikEval which will automatically download the GUI.
6. Connect USB cable from PC to Linduino board. Connect the RF input to the signal generator at the 2.92mm connector
7. Set the frequency and power level (less than +10dBm) of the signal generator.
8. Open LTC5596 GUI, and set the frequency of signal to be measured. Push "READ" to measure RF power. Using the default calibration would be loading the nominal slope and intercept from LTC5596 data sheet values. See Figure 3.
9. For higher accuracy, Calibration can be performed using the GUI at various frequency with two point calibration. Set input power level to the corresponding calibration points on the GUI, and calibrate accordingly by clicking the corresponding button.
10. Read RF power using the GUI.

DEMO BOARD USAGE NOTES

1. Demo Board DC2870A has provisions for inter-stage filter cap. Additional capacitor (C3) can be added to slow down the transient response to reduce the output ripple. The range for C3 is 10pF to 1nF.
2. Output power is calculated using slope and intercept.
3. $ADC\ count \cdot 4.9mV/slope + intercept = output\ power.$ Slope is derived from two point calibration in the linear region of transfer function.
4. A minimum two point calibration is necessary for most applications. Additional calibration points will improve the accuracy of the power detection.

DEMO BOARD USAGE NOTES

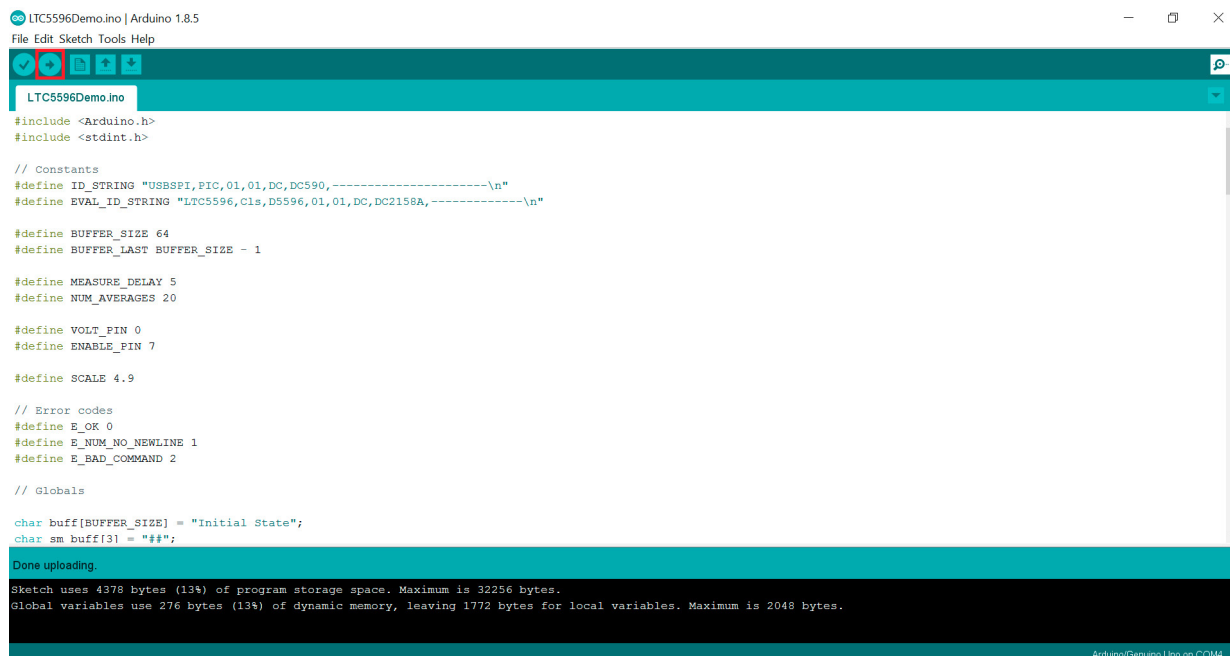


Figure 2. Firmware Re-Load (Only If Necessary)

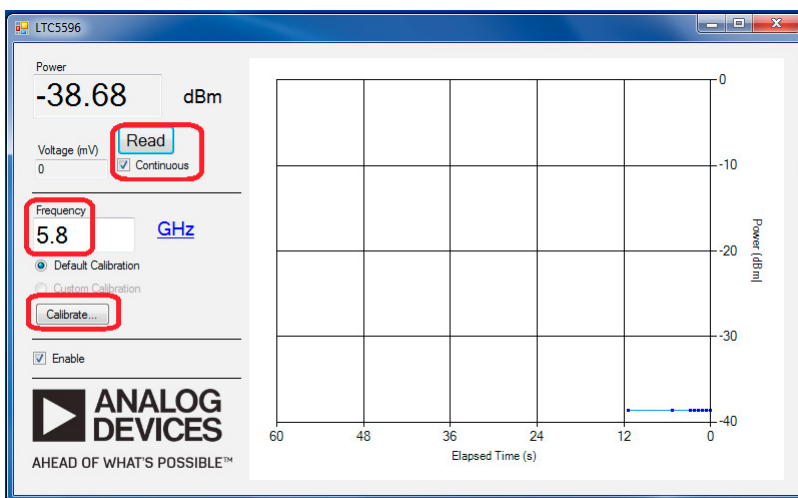


Figure 3. GUI

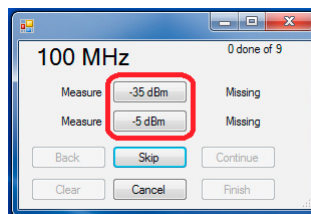


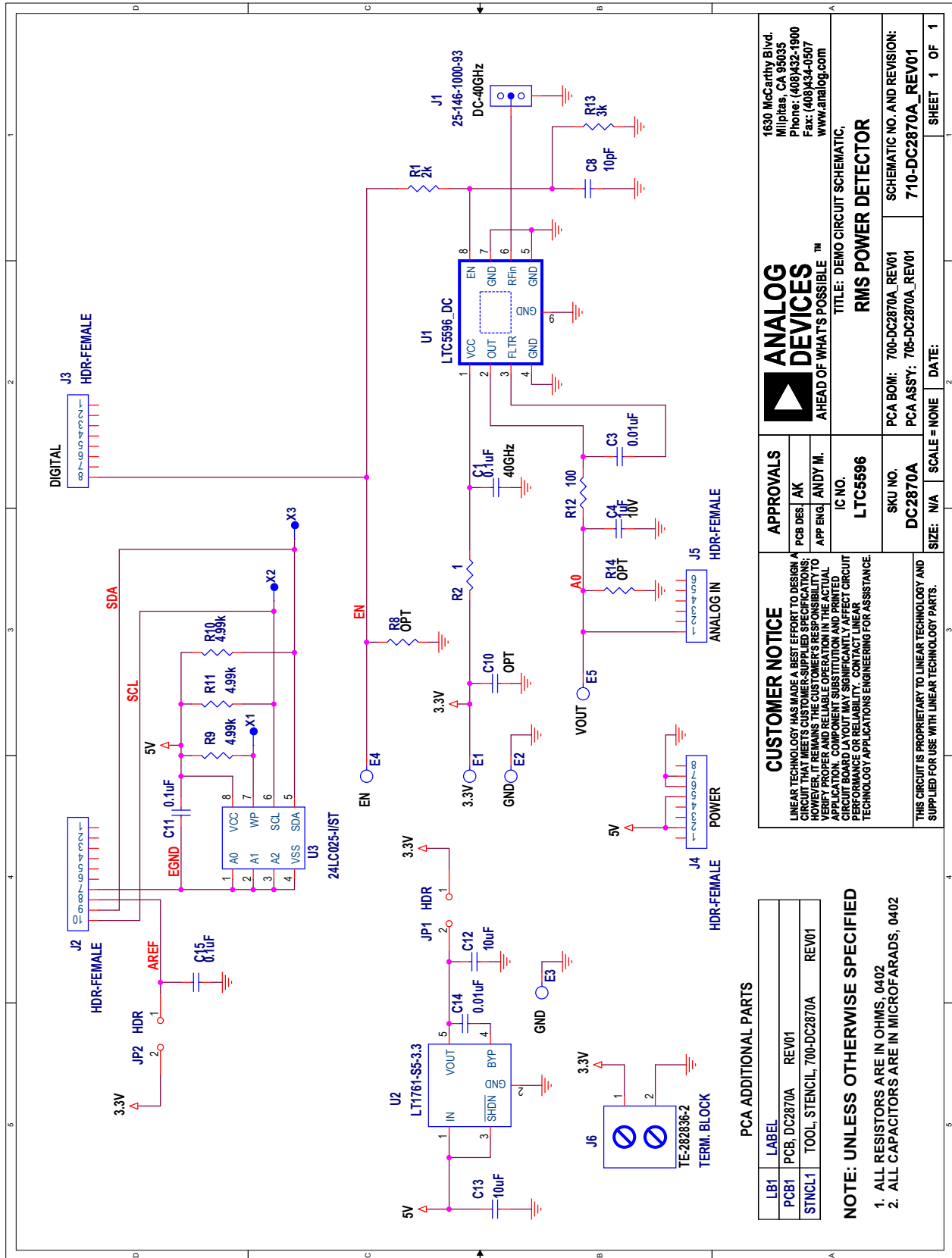
Figure 4. Calibration

DEMO MANUAL DC2870A

PARTS LIST

ITEM	QTY	REFERENCE	PART DESCRIPTION	MANUFACTURER/PART NUMBER
Required Circuit Components				
1	1	C1	CAP, CX Series, (16kHz to 40GHz), 0.1µF, YD, 16V, 10%, 0402	AVX, CX02YD104KAT2
2	2	C3, C14	CAP, 0.01µF, X7R, 16V, 10%, 0402	MURATA, GRM155R71C103KA01D NIC, NMC0402X7R103K16TRPF
3	1	C4	CAP, 1µF, X5R, 10V, 10%, 0402	MURATA, GRM155R61A105KE15D AVX, 0402ZD105KAT2 TDK, C1005X5R1A105K050BB
4	1	C8	CAP, 10pF, NP0, 50V, 10%, 0402	AVX, 04025A100KAT2A
5	0	C10	CAP, OPTION, 0402	
6	2	C11, C15	CAP, 0.1µF, X7R, 16V, 10%, 0402	AVX, 0402YC104KAT2A Taiyo Yuden, EMK105B7104KV-F TDK, C1005X7R1C104K050BC
7	2	C12, C13	CAP CER 10UF 6.3V X5R 0402	TDK Corporation, C1005X5R0J106M050BC
8	5	E1, E2, E3, E4, E5	TEST POINT, TURRET, 0.064", MTG. HOLE	MILL-MAX, 2308-2-00-80-00-00-07-0
9	1	J1	CONN., SMA, 2.9mm, JACK TO EDGE LUNCH, DC-40GHz	SRI CONNECTOR GAGE, 25-146-1000-93
10	1	J2	CONN., HDR, FEMALE, 1x10, 2.54mm, THT, STR	SULLINS CONNECTOR SOLUTIONS, PPPC101LFBN-RC
11	2	J3, J4	CONN., HDR, FEMALE, 1x8, 2.54mm, STR, THT	SULLINS CONNECTOR SOLUTIONS, PPPC081LFBN-RC
12	1	J5	CONN., HDR., FEMALE, 1x6, 2.54mm, THT, STR	SULLINS CONNECTOR SOLUTIONS, PPPC061LFBN-RC
13	1	J6	CONN., TERM. BLOCK, RCPT, 1x2, 5mm, SIDE ENTRY, THT	TE CONNECTIVITY, 282836-2
14	2	JP1, JP2	CONN., HDR, MALE, 1x2, 2mm, VERT, STR, THT, 10u" AU	SAMTEC, TMM-102-02-L-S
15	1	LB1	LABEL SPEC, DEMO BOARD SERIAL NUMBER	BRADY, THT-96-717-10
16	1	PCB1	PCB, DC2870A	ANALOG DEVICES INC., 600-DC2870A
17	1	R1	RES., AEC-Q200, 2k OHMS, 1%, 1/16W, 0402	VISHAY, CRCW04022K00FKED NIC, NRC04F2001TRF
18	1	R2	RES., 1 OHM, 1%, 1/16W, 0402	VISHAY, CRCW04021R00FKED
19	0	R8, R14	RES., OPTION, 0402	
20	3	R9, R10, R11	RES., 4.99k OHMS, 1%, 1/16W, 0402	NIC, NRC04F4991TRF VISHAY, CRCW04024K99FKED YAGEO, RC0402FR-074K99L
21	1	R12	RES., 100 OHMS, 1%, 1/16W, 0402	NIC, NRC04F1000TRF YAGEO, RC0402FR-07100RL
22	1	R13	RES., 3k OHMS, 5%, 1/16W, 0402	VISHAY, CRCW04023K00JNED
23	1	STNCL1	TOOL, STENCIL, 700-DC2870A	ANALOG DEVICES INC., 830-DC2870A
24	1	U1	IC, 100MHz to 40GHz Linear-in-dB RMS Power Detector with 35dB Dynamic Range	LINEAR TECH, LTC5596_DC#PBF
25	1	U2	IC, LOW NOISE, LDO MICROPOWER REG., TSOT23-5	LINEAR TECH., LT1761ES5-3.3#PBF LINEAR TECH., LT1761ES5-3.3#TRPBF
26	1	U3	IC, MEMORY, EEPROM, 2Kb (256x8), TSSOP-8, 400kHz	MICROCHIP, 24LC025-I/ST MICROCHIP, 24LC025T-I/ST

SCHEMATIC DIAGRAM



1630 McCarthy Blvd.
Milpitas, CA 95035
Phone: (408)432-1900
Fax: (408)434-0507
www.analog.com

ANALOG DEVICES
AHEAD OF WHAT'S POSSIBLE™

TITLE: DEMO CIRCUIT SCHEMATIC
RMS POWER DETECTOR

IC NO. **LTC5596**
SKU NO. **DC2870A**
PCA BOM: 700-DC2870A_REV01
PCA ASSY: 705-DC2870A_REV01

APPROVALS
PCB DES. AK
APP ENG. ANDY M.
SCALE = NONE | DATE: 2

CUSTOMER NOTICE
LINEAR TECHNOLOGY HAS MADE A BEST EFFORT TO DESIGN A CIRCUIT THAT MEETS CUSTOMER-SUPPLIED SPECIFICATIONS. HOWEVER, IT REMAINS THE CUSTOMER'S RESPONSIBILITY TO VERIFY PROPER AND RELIABLE OPERATION IN THE ACTUAL APPLICATION. COMPONENT SUBSTITUTION AND PRINTED CIRCUIT BOARD MANUFACTURING VARIATIONS MAY AFFECT CIRCUIT PERFORMANCE OR RELIABILITY. CONTACT LINEAR TECHNOLOGY/APPLICATIONS ENGINEERING FOR ASSISTANCE.

THIS CIRCUIT IS PROPRIETARY TO LINEAR TECHNOLOGY AND SUPPLIED FOR USE WITH LINEAR TECHNOLOGY PARTS.

PCB: DC2870A REV01
TOOL, STENCIL, 700-DC2870A REV01

NOTE: UNLESS OTHERWISE SPECIFIED
1. ALL RESISTORS ARE IN OHMS, 0402
2. ALL CAPACITORS ARE IN MICROFARADS, 0402

PCA ADDITIONAL PARTS

LB1	LABEL
PCB1	PCB, DC2870A REV01
STNCL1	TOOL, STENCIL, 700-DC2870A REV01

SHEET 1 OF 1

DATE: 2

SCALE = NONE

DATE: 2

DATE: 2

DATE: 2

DATE: 2

DATE: 2

DATE: 2

DATE: 2



ESD Caution

ESD (electrostatic discharge) sensitive device. Charged devices and circuit boards can discharge without detection. Although this product features patented or proprietary protection circuitry, damage may occur on devices subjected to high energy ESD. Therefore, proper ESD precautions should be taken to avoid performance degradation or loss of functionality.

Legal Terms and Conditions

By using the evaluation board discussed herein (together with any tools, components documentation or support materials, the "Evaluation Board"), you are agreeing to be bound by the terms and conditions set forth below ("Agreement") unless you have purchased the Evaluation Board, in which case the Analog Devices Standard Terms and Conditions of Sale shall govern. Do not use the Evaluation Board until you have read and agreed to the Agreement. Your use of the Evaluation Board shall signify your acceptance of the Agreement. This Agreement is made by and between you ("Customer") and Analog Devices, Inc. ("ADI"), with its principal place of business at One Technology Way, Norwood, MA 02062, USA. Subject to the terms and conditions of the Agreement, ADI hereby grants to Customer a free, limited, personal, temporary, non-exclusive, non-sublicensable, non-transferable license to use the Evaluation Board FOR EVALUATION PURPOSES ONLY. Customer understands and agrees that the Evaluation Board is provided for the sole and exclusive purpose referenced above, and agrees not to use the Evaluation Board for any other purpose. Furthermore, the license granted is expressly made subject to the following additional limitations: Customer shall not (i) rent, lease, display, sell, transfer, assign, sublicense, or distribute the Evaluation Board; and (ii) permit any Third Party to access the Evaluation Board. As used herein, the term "Third Party" includes any entity other than ADI, Customer, their employees, affiliates and in-house consultants. The Evaluation Board is NOT sold to Customer; all rights not expressly granted herein, including ownership of the Evaluation Board, are reserved by ADI. CONFIDENTIALITY. This Agreement and the Evaluation Board shall all be considered the confidential and proprietary information of ADI. Customer may not disclose or transfer any portion of the Evaluation Board to any other party for any reason. Upon discontinuation of use of the Evaluation Board or termination of this Agreement, Customer agrees to promptly return the Evaluation Board to ADI. ADDITIONAL RESTRICTIONS. Customer may not disassemble, decompile or reverse engineer chips on the Evaluation Board. Customer shall inform ADI of any occurred damages or any modifications or alterations it makes to the Evaluation Board, including but not limited to soldering or any other activity that affects the material content of the Evaluation Board. Modifications to the Evaluation Board must comply with applicable law, including but not limited to the RoHS Directive. TERMINATION. ADI may terminate this Agreement at any time upon giving written notice to Customer. Customer agrees to return to ADI the Evaluation Board at that time. LIMITATION OF LIABILITY. THE EVALUATION BOARD PROVIDED HEREUNDER IS PROVIDED "AS IS" AND ADI MAKES NO WARRANTIES OR REPRESENTATIONS OF ANY KIND WITH RESPECT TO IT. ADI SPECIFICALLY DISCLAIMS ANY REPRESENTATIONS, ENDORSEMENTS, GUARANTEES, OR WARRANTIES, EXPRESS OR IMPLIED, RELATED TO THE EVALUATION BOARD INCLUDING, BUT NOT LIMITED TO, THE IMPLIED WARRANTY OF MERCHANTABILITY, TITLE, FITNESS FOR A PARTICULAR PURPOSE OR NON-INFRINGEMENT OF INTELLECTUAL PROPERTY RIGHTS. IN NO EVENT WILL ADI AND ITS LICENSORS BE LIABLE FOR ANY INCIDENTAL, SPECIAL, INDIRECT, OR CONSEQUENTIAL DAMAGES RESULTING FROM CUSTOMER'S POSSESSION OR USE OF THE EVALUATION BOARD, INCLUDING BUT NOT LIMITED TO LOST PROFITS, DELAY COSTS, LABOR COSTS OR LOSS OF GOODWILL. ADI'S TOTAL LIABILITY FROM ANY AND ALL CAUSES SHALL BE LIMITED TO THE AMOUNT OF ONE HUNDRED US DOLLARS (\$100.00). EXPORT. Customer agrees that it will not directly or indirectly export the Evaluation Board to another country, and that it will comply with all applicable United States federal laws and regulations relating to exports. GOVERNING LAW. This Agreement shall be governed by and construed in accordance with the substantive laws of the Commonwealth of Massachusetts (excluding conflict of law rules). Any legal action regarding this Agreement will be heard in the state or federal courts having jurisdiction in Suffolk County, Massachusetts, and Customer hereby submits to the personal jurisdiction and venue of such courts. The United Nations Convention on Contracts for the International Sale of Goods shall not apply to this Agreement and is expressly disclaimed.

Компания «Океан Электроники» предлагает заключение долгосрочных отношений при поставках импортных электронных компонентов на взаимовыгодных условиях!

Наши преимущества:

- Поставка оригинальных импортных электронных компонентов напрямую с производств Америки, Европы и Азии, а так же с крупнейших складов мира;
- Широкая линейка поставок активных и пассивных импортных электронных компонентов (более 30 млн. наименований);
- Поставка сложных, дефицитных, либо снятых с производства позиций;
- Оперативные сроки поставки под заказ (от 5 рабочих дней);
- Экспресс доставка в любую точку России;
- Помощь Конструкторского Отдела и консультации квалифицированных инженеров;
- Техническая поддержка проекта, помощь в подборе аналогов, поставка прототипов;
- Поставка электронных компонентов под контролем ВП;
- Система менеджмента качества сертифицирована по Международному стандарту ISO 9001;
- При необходимости вся продукция военного и аэрокосмического назначения проходит испытания и сертификацию в лаборатории (по согласованию с заказчиком);
- Поставка специализированных компонентов военного и аэрокосмического уровня качества (Xilinx, Altera, Analog Devices, Intersil, Interpoint, Microsemi, Actel, Aeroflex, Peregrine, VPT, Syfer, Eurofarad, Texas Instruments, MS Kennedy, Miteq, Cobham, E2V, MA-COM, Hittite, Mini-Circuits, General Dynamics и др.);

Компания «Океан Электроники» является официальным дистрибьютором и эксклюзивным представителем в России одного из крупнейших производителей разъемов военного и аэрокосмического назначения «JONHON», а так же официальным дистрибьютором и эксклюзивным представителем в России производителя высокотехнологичных и надежных решений для передачи СВЧ сигналов «FORSTAR».



JONHON

«JONHON» (основан в 1970 г.)

Разъемы специального, военного и аэрокосмического назначения:

(Применяются в военной, авиационной, аэрокосмической, морской, железнодорожной, горно- и нефтедобывающей отраслях промышленности)

«FORSTAR» (основан в 1998 г.)

ВЧ соединители, коаксиальные кабели, кабельные сборки и микроволновые компоненты:

(Применяются в телекоммуникациях гражданского и специального назначения, в средствах связи, РЛС, а так же военной, авиационной и аэрокосмической отраслях промышленности).



Телефон: 8 (812) 309-75-97 (многоканальный)

Факс: 8 (812) 320-03-32

Электронная почта: ocean@oceanchips.ru

Web: <http://oceanchips.ru/>

Адрес: 198099, г. Санкт-Петербург, ул. Калинина, д. 2, корп. 4, лит. А