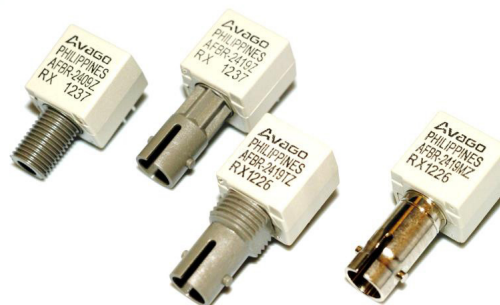


# AFBR-24x9xZ

## 50 MBd Miniature Link Fiber Optic Receiver



## Data Sheet



### Description

The AFBR-24x9Z series components provide cost effective, high performance fiber optic communication links for information systems and industrial applications with link distances of up to 3 km. The receivers are directly compatible with popular “industry-standard” connectors: ST® and SMA. They are designed for use with 62.5/125  $\mu$ m multi mode fiber.

#### AFBR-24x9xZ Available Part Numbers

| Part Number | Description                    |
|-------------|--------------------------------|
| AFBR-2409Z  | Receiver with SMA port         |
| AFBR-2419Z  | Receiver with ST port          |
| AFBR-2419TZ | Receiver with threaded ST port |
| AFBR-2419MZ | Receiver with metal ST port    |

#### Link Length

| Data Rate (MBd) | Max. Distance (m) | Fiber Size ( $\mu$ m) | Transmitter |
|-----------------|-------------------|-----------------------|-------------|
| 20              | 3000              | 62.5/125              | HFBR-1414Z  |
| 32              | 2200              | 62.5/125              | HFBR-1414Z  |
| 40              | 1500              | 62.5/125              | HFBR-1414Z  |
| 50              | 1000              | 62.5/125              | HFBR-1414Z  |

Verified with PRBS7 pattern at min. Tx optical power -19 dBm avg (-16 dBm pk. as specified in HFBR-1414Z data sheet).

### Features

- RoHS-compliant
- Works with Avago HFBR-14xxZ (820 nm LED) transmitter
- Data transmission at signal rates from 100 kBd up to 50 MBd
- Receiver: Integrated PIN diode and digitalizing IC with CMOS/TTL output logic
- Up to 3 km distance with Multimode Glass Fiber Cable
- Operating temperature range of -40 °C to +85 °C
- Compatible with 10Base-FL standard
- 3.3 V and 5 V supply voltage operation
- RSSI output

### Applications

- Optical transmission from 100 kBd up to 50 MBd
- Industrial control and factory automation
- High voltage isolation
- Elimination of ground loops
- Reduces voltage transient susceptibility
- Power substation automation

## Package and Handling Information

### Package Information

The receiver is housed in a low-cost, dual-inline package that is made of high strength, heat resistant, chemically resistant, and UL 94V-O flame retardant ULTEM® plastic (UL File #E121562). The receivers (suffix Z, TZ) are easily identified by the dark grey color connector port. A metal port option is also available (suffix MZ). The metal port option components have an internal electrical connection between the metal port and the four grounding pins, as shown in the package outline drawing. Signal ground is separate from the four grounding pins to give flexibility in connecting the port to signal or chassis ground. The package is designed for auto-insertion and wave soldering so it is ideal for high volume production applications.

### Handling and Design Information

Each part is delivered with a protective port cap or a plug covering the optics. These caps/plugs will vary by port style. When soldering, it is advisable to leave the protective cap on the unit to keep the optics clean. Good system performance requires clean port optics and cable ferrules to avoid obstructing the optical path. Clean compressed air often is sufficient to remove particles of dirt; methanol on a cotton swab also works well.

## AFBR-24x9xZ Low-Cost 50 MBd Receiver

### Description

The AFBR-24x9xZ fiber optic receiver is designed to operate with the Avago Technologies HFBR-14xxZ fiber optic transmitters and multimode glass fiber cable. Consistent coupling into the receiver is assured by the optical system with lens. The receiver output is a digital CMOS/TTL signal. The AFBR-24x9xZ receiver contains an IC with integrated photodiode which directly converts the incoming optical signal to a digital output signal without the requisite for additional external circuitry. Because of its integrated design, the receiver has very high EMC resistance. A wide receiver dynamic range and high sensitivity over temperature is achievable. The data rate typically goes from 100 kBd to 50 MBd. A monitor (RSSI) output, which delivers an output current proportional to the average incoming light power, is available.

For an almost noise-free RSSI-signal smoothing components are recommended. A capacitor in parallel to the resistor on the RSSI output reduces potential high frequency signal parts. The use of a single 100 nF capacitor for signal smoothing is sufficient in most common applications, as shown in the Recommended Receiver Circuitry section on page 4. If this RSSI function is not required, the output pin can be left floating. The RSSI-signal is derived from internal controlling loops; therefore, the typical time constant of pure RSSI output current without an external filter can be up to 1 ms. This time constant also depends on the actual average incoming light power.

### Absolute Maximum Ratings

| Parameter                                  | Symbol             | Min  | Max                  | Unit | Reference |
|--|--------------------|------|----------------------|------|-----------|
| Storage Temperature                        | T <sub>S</sub>     | -40  | +85                  | °C   |           |
| Operating Temperature                      | T <sub>A</sub>     | -40  | +85                  | °C   |           |
| Supply Voltage                             | V <sub>CC</sub>    | -0.3 | 5.5                  | V    |           |
| Maximum DC Output Current                  | I <sub>O</sub>     |      | 10                   | mA   |           |
| Voltage at RSSI Output                     | V <sub>RSSI</sub>  | -0.3 | V <sub>CC</sub> +0.3 | V    |           |
| Lead Soldering Cycle - Temp                | T <sub>SOLD</sub>  |      | 260                  | °C   | Note 1    |
| Lead Soldering Cycle - Time                | t <sub>SOLD</sub>  |      | 10                   | s    | Note 1    |
| Electrostatic Discharge Voltage Capability | ESD <sub>HBM</sub> |      | 2000                 | V    | Note 2    |
| Electrostatic Discharge Voltage Capability | ESD <sub>MM</sub>  |      | 400                  | V    | Note 3    |

Note:

1. 1.6 mm below seating plane.
2. ESD capability for all pins HBM (Human Body Model) according to JEDEC JESD22-A114.
3. ESD capability for all pins MM (Machine Model) according to JEDEC JESD22-A115.

## Electrical/Optical Characteristics

-40 °C to +85 °C, 3.135 V < V<sub>CC</sub> < 5.25 V

| Parameter   | Symbol                             | Min   | Typ <sup>[1]</sup>   | Max                | Unit | Condition                        | Reference   |
|---|------------------------------------|-------|----------------------|--------------------|------|----------------------------------|-------------|
| Optical Input Avg. Power Range (40 MBd proprietary) | P <sub>IN-40</sub>                 | -30   |                      | 0                  | dBm  | DR = 40 MBd                      | Notes 2,3,4 |
| Optical Input Avg. Power Range (50 MBd proprietary) | P <sub>IN-50</sub>                 | -27   |                      | 0                  | dBm  | DR = 50 MBd                      | Notes 2,3,5 |
| Optical Input Average Power Range (10Base-FL)       | P <sub>IN-10B</sub>                | -32.5 |                      | 0                  | dBm  | DR = 10 Mbps (biphase-coded)     | Notes 2,3,6 |
| Optical Spectrum Range                              | λ <sub>IN</sub>                    | 792   | 820                  | 865                | nm   | peak wavelength                  |             |
| Data Rate   | DR                                 | 0.1   |                      | 50                 | MBd  |                                  | Note 7      |
| Propagation Delay                                   | t <sub>RD</sub>                    |       | 27                   |                    | ns   | P <sub>IN</sub> = -20 dBm avg.   |             |
| Supply Voltage                                      | V <sub>CC</sub>                    | 3.135 |                      | 5.25               | V    |                                  |             |
| Supply Current                                      | I <sub>CC</sub>                    |       | 11                   | 20                 | mA   | R <sub>L</sub> = 2 kΩ            |             |
| High Level Output Voltage                           | V <sub>OH</sub>                    | 2.4   | V <sub>CC</sub> -0.3 | V <sub>CC</sub>    | V    | R <sub>L</sub> = 2 kΩ            |             |
| Low Level Output Voltage                            | V <sub>OL</sub>                    |       | 0.2                  | 0.4                | V    | R <sub>L</sub> = 2 kΩ            |             |
| Output Rise Time (10-90%)                           | t <sub>R</sub>                     |       |                      | 5                  | ns   | C <sub>L</sub> = 10 pF           | Notes 2,4   |
| Output Fall Time (90-10%)                           | t <sub>F</sub>                     |       |                      | 5                  | ns   | C <sub>L</sub> = 10 pF           | Notes 2,4   |
| Pulse Width Distortion                              | PWD                                | -5    |                      | 5                  | ns   | P <sub>IN</sub> = -30 dBm avg.   | Note 4,9    |
| Total Jitter  | TJ                                 |       |                      | 15                 | ns   | P <sub>IN</sub> = -32.5 dBm avg. | Note 6      |
| RSSI Output Responsivity                            | I <sub>RSSI</sub> /P <sub>IN</sub> | 0.3   | 0.65                 | 0.9                | A/W  |                                  | Note 8      |
| Voltage at RSSI Output                              | V <sub>RSSI</sub>                  | 0     |                      | V <sub>CC</sub> -1 | V    |                                  | Note 8      |

Notes:

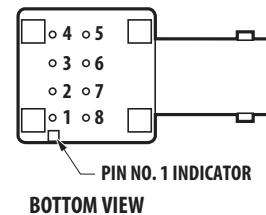
1. Typical data are at 25 °C, V<sub>CC</sub> = 5.0 V.
2. In recommended receiver circuit, with an optical signal from the recommended transmitter circuit, transmitted via 62.5/125 μm MM fiber.
3. Condition for sensitivity limit: Total Jitter ≤ 0.6 UI (unit intervals).
4. Verified with a PRBS7 signal with mark ratio = ½ running at 40 MBd.
5. Verified with a PRBS7 signal with mark ratio = ½ running at 50 MBd.
6. Verified with a jitter-free Manchester coded pseudo random sequence running at 20 MBd (~10 Mbit/s) as optical input signal.
7. The device does not support DC operation. Hence any static low or high at the input will cause an undefined output signal.
8. The RSSI current output has been verified with an external resistor R<sub>RSSI</sub>=2 kΩ
9. The PWD is valid for the receiver only, assuming an ideal 50% duty cycle optical input signal. PWD = P<sub>WOUT-AVG</sub> - P<sub>WIN-AVG</sub>  
Operation with unbalanced pattern (mark ratio ≠ 1/2 or DC ≠ 50%) will cause a higher PWD than what is specified in this table.

## Pin Description

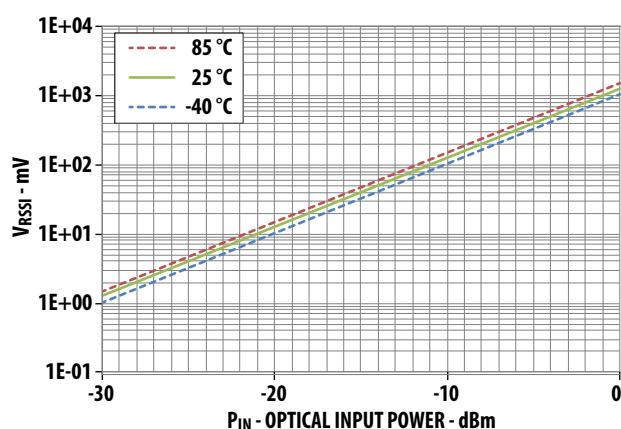
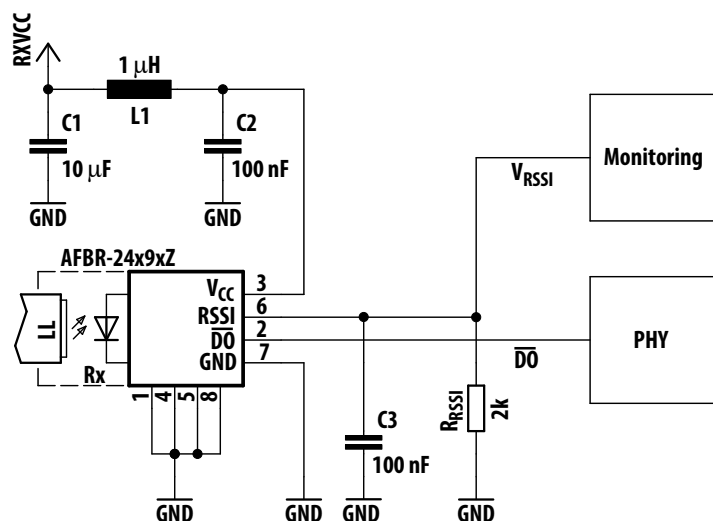
| Pin | Name            | Function                                  | Reference |
|-----|-----------------|---|-----------|
| 1   | NC              | NC  | 1         |
| 2   | /D <sub>O</sub> | Data Out inverted (CMOS/TTL logic)        | 2         |
| 3   | V <sub>CC</sub> | 5V/3.3V Supply Voltage                    |           |
| 4   | NC              | NC  | 1         |
| 5   | NC              | NC  | 1         |
| 6   | RSSI            | Received Signal Strength Indicator Output |           |
| 7   | GND             | Ground                                    |           |
| 8   | NC              | NC  | 1         |

Notes

1. Pins 1, 4, 5 and 8 are connected together internally. The metal port option components (suffix MZ) have an internal electrical connection between the metal port and the four grounding pins
2. The data output provides an inverted signal, thus an electrical low in case of light on and vice versa.



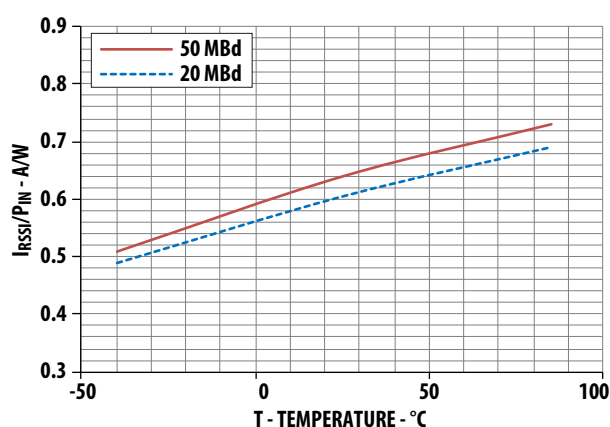
## Recommended Receiver Circuitry



**Figure 1. Typical RSSI output voltage across  $R_{RSSI} = 2\text{ k}\Omega$**

Note:

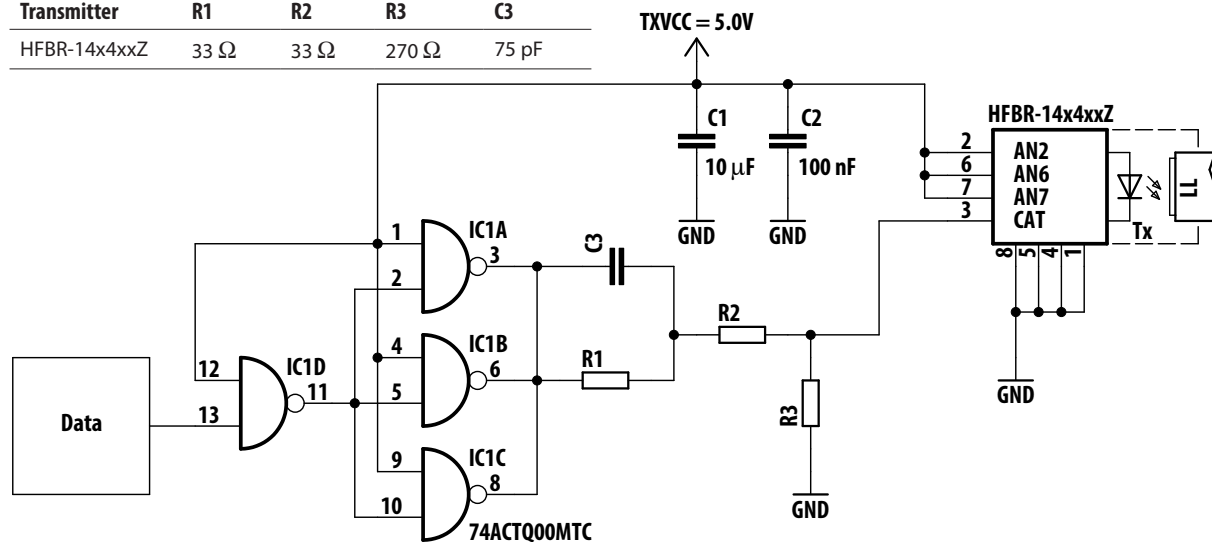
To provide a suitable monitoring voltage, choose the value of  $R_{RSSI}$  according to the particular optical power situation. For the characterization of the responsivity,  $2\text{ k}\Omega$  was used. The lower the power, the higher the resistor value should be. Do not, however, override the max. limit of  $V_{RSSI}$ .



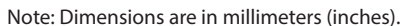
**Figure 2. Typical Responsivity vs. Temperature**

### Recommended Transmitter Driver Circuitry using HFBR-144xxZ

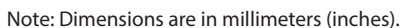
| Transmitter  | R1          | R2          | R3           | C3    |
|--------------|-------------|-------------|--------------|-------|
| HFBR-14x4xxZ | 33 $\Omega$ | 33 $\Omega$ | 270 $\Omega$ | 75 pF |



## AFBR-2409Z

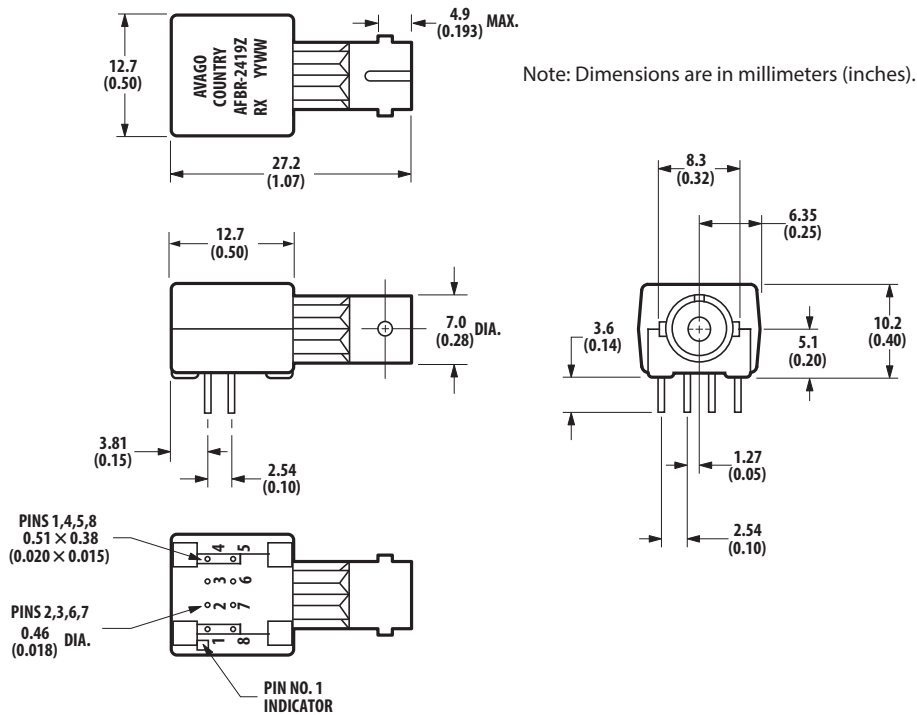


**AFBR-2419TZ**



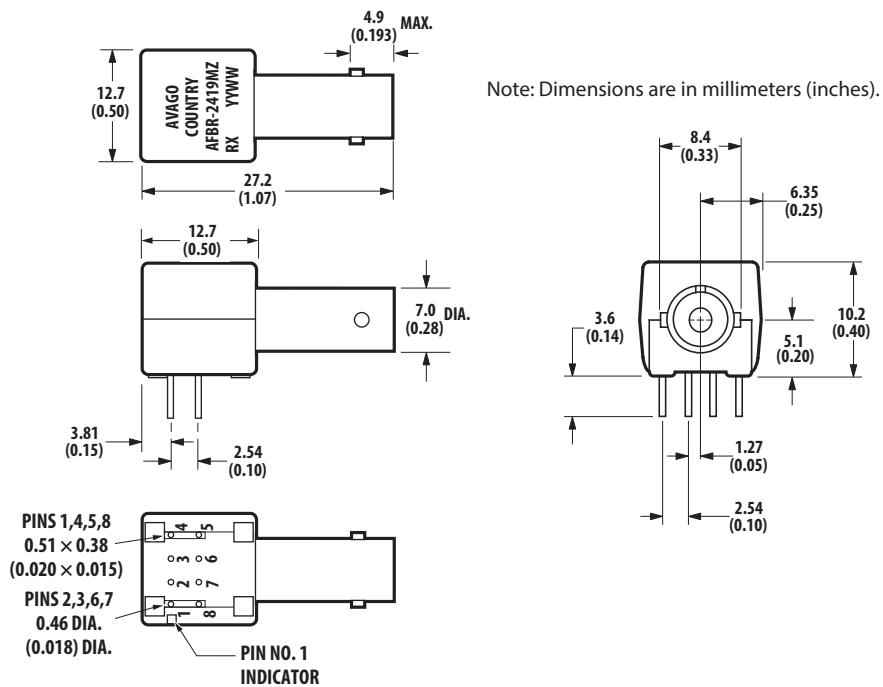
## Mechanical Dimensions – ST Port

### AFBR-2419Z



## Mechanical Dimensions – Metal ST Port

### AFBR-2419MZ



For product information and a complete list of distributors, please go to our web site: [www.avagotech.com](http://www.avagotech.com)

Avago, Avago Technologies, and the A logo are trademarks of Avago Technologies in the United States and other countries. Data subject to change. Copyright © 2005-2013 Avago Technologies. All rights reserved.  
AV02-3868EN - August 2, 2013

**Avago**  
TECHNOLOGIES

Компания «Океан Электроники» предлагает заключение долгосрочных отношений при поставках импортных электронных компонентов на взаимовыгодных условиях!

Наши преимущества:

- Поставка оригинальных импортных электронных компонентов напрямую с производств Америки, Европы и Азии, а так же с крупнейших складов мира;
- Широкая линейка поставок активных и пассивных импортных электронных компонентов (более 30 млн. наименований);
- Поставка сложных, дефицитных, либо снятых с производства позиций;
- Оперативные сроки поставки под заказ (от 5 рабочих дней);
- Экспресс доставка в любую точку России;
- Помощь Конструкторского Отдела и консультации квалифицированных инженеров;
- Техническая поддержка проекта, помощь в подборе аналогов, поставка прототипов;
- Поставка электронных компонентов под контролем ВП;
- Система менеджмента качества сертифицирована по Международному стандарту ISO 9001;
- При необходимости вся продукция военного и аэрокосмического назначения проходит испытания и сертификацию в лаборатории (по согласованию с заказчиком);
- Поставка специализированных компонентов военного и аэрокосмического уровня качества (Xilinx, Altera, Analog Devices, Intersil, Interpoint, Microsemi, Actel, Aeroflex, Peregrine, VPT, Syfer, Eurofarad, Texas Instruments, MS Kennedy, Miteq, Cobham, E2V, MA-COM, Hittite, Mini-Circuits, General Dynamics и др.);

Компания «Океан Электроники» является официальным дистрибьютором и эксклюзивным представителем в России одного из крупнейших производителей разъемов военного и аэрокосмического назначения «JONHON», а так же официальным дистрибьютором и эксклюзивным представителем в России производителя высокотехнологичных и надежных решений для передачи СВЧ сигналов «FORSTAR».



## JONHON

«JONHON» (основан в 1970 г.)

Разъемы специального, военного и аэрокосмического назначения:

(Применяются в военной, авиационной, аэрокосмической, морской, железнодорожной, горно- и нефтедобывающей отраслях промышленности)

«FORSTAR» (основан в 1998 г.)

ВЧ соединители, коаксиальные кабели,  
кабельные сборки и микроволновые компоненты:

(Применяются в телекоммуникациях гражданского и специального назначения, в средствах связи, РЛС, а так же военной, авиационной и аэрокосмической отраслях промышленности).



Телефон: 8 (812) 309-75-97 (многоканальный)

Факс: 8 (812) 320-03-32

Электронная почта: [ocean@oceanchips.ru](mailto:ocean@oceanchips.ru)

Web: <http://oceanchips.ru/>

Адрес: 198099, г. Санкт-Петербург, ул. Калинина, д. 2, корп. 4, лит. А