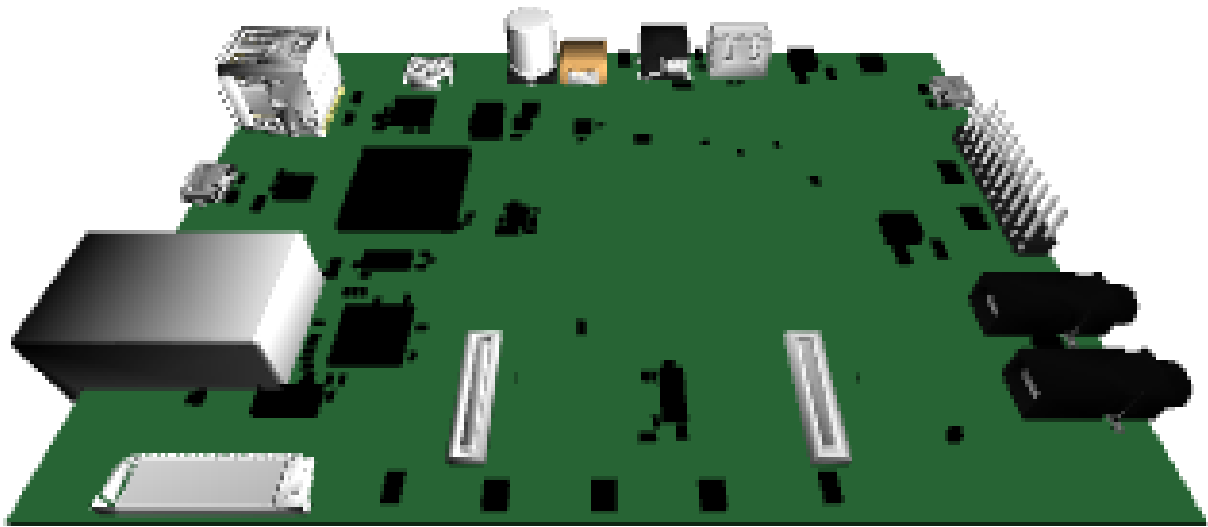


Garret 50C



gumstix[®]

dream, design, deliver™



Gumstix, Inc. shall have no liability of any kind, express or implied, arising out of the use of the Information in this document, including direct, indirect, special or consequential damages.

Gumstix, Inc. may have patents, patent applications, trademarks, copyrights, trade secrets or other intellectual property rights pertaining to Gumstix products described in this document (collectively "Gumstix Intellectual Property").

Except as expressly provided in any written license or agreement from Gumstix, Inc., this document and the information contained therein does not create any license to Gumstix's Intellectual Property.

The Information contained herein is subject to change without notice. Revisions may be issued regarding changes and/or additions.

Copyright © 2016, Gumstix, Inc. All rights reserved.

Board Description

An DuoVero COM based expansion board, with support for 5.0" Newhaven Capacitive multi-touch screen (screen sold separately) with Ethernet, USB and audio.

Board Dimensions

12.0cm x 8.5cm



Contents

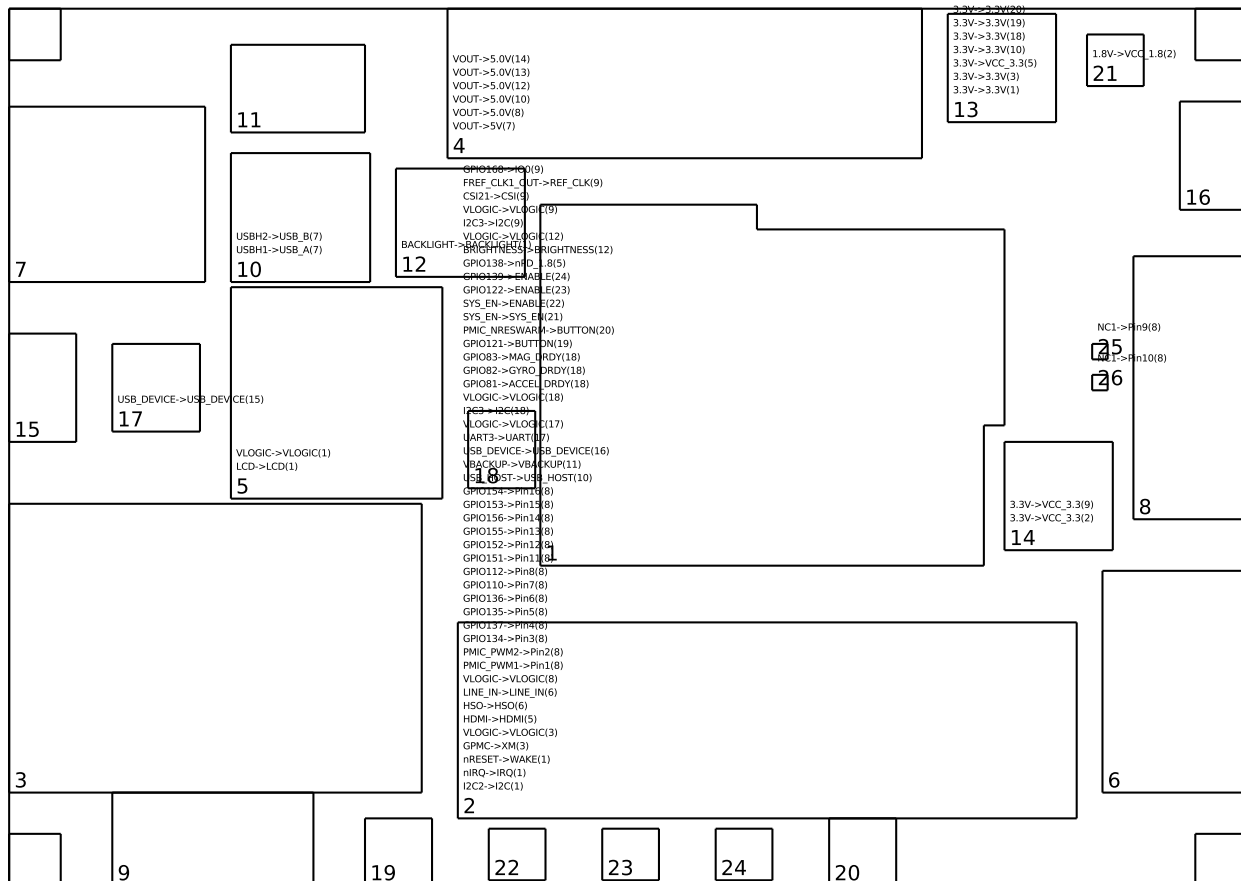
1	Modules on Board	1
1.1	LCD Display	1
1.1.1	5.0" Flip-Side Connector For Newhaven Capacitive Multi-Touch Screen (v6) (1) . . .	1
1.2	COM Connectors	1
1.2.1	Gumstix - DuoVero COM Connector (v19) (2)	1
1.3	Network	3
1.3.1	10/100BASE-T (v10) (3)	3
1.4	Power	3
1.4.1	Battery & Barrel Power Supply (v1) (4)	3
1.4.2	CoinCell Backup (v3) (11)	4
1.4.3	Backlight Controller (v4) (12)	4
1.4.4	3.3V/1.5A Regulator (v9) (13)	4
1.4.5	3.3V/1.5A Regulator (v9) (14)	5
1.4.6	1.8V/0.6A Regulator (v6) (21)	5
1.5	Connectivity	5
1.5.1	HDMI to Parallel Converter (v3) (5)	5
1.5.2	USB-UART (v14) (17)	5
1.6	Audio	5
1.6.1	Dual Audio (in / out) (v9) (6)	5
1.7	USB	6
1.7.1	Dual Stacked USB Type A (v6) (7)	6
1.7.2	3-Port USB Hub (v10) (10)	6
1.7.3	Micro-B Jack (v8) (15)	6
1.7.4	Micro-B Jack (v8) (16)	6
1.8	Headers	6
1.8.1	20-Pin Male Header (v8) (8)	6
1.8.2	COM to CSI2 Connector (v6) (9)	7
1.8.3	NC (v6) (25)	7
1.8.4	NC (v6) (26)	7
1.9	Sensors	7
1.9.1	9-Axis IMU (v16) (18)	7
1.10	IO	8
1.10.1	Flip-side Tactile Switch (v4) (19)	8



1.10.2 Flip-side Tactile Switch (v4) (20)	8
1.10.3 Flip-side Green LED (v3) (22)	8
1.10.4 Flip-side Blue LED (v3) (23)	8
1.10.5 Flip-side Red LED (v5) (24)	8
1.11 Mechanical	8
1.11.1 Mounting Hole (2.2mm)	8
1.11.2 Mounting Hole (2.2mm)	8
1.11.3 Mounting Hole (2.2mm)	9
1.11.4 Mounting Hole (2.2mm)	9
2 Module Connections Graph	10
3 Module Power Graph	11



1 Modules on Board



1.1 LCD Display

1.1.1 5.0" Flip-Side Connector For Newhaven Capacitive Multi-Touch Screen (v6) (1)

A 5.0 inch LCD and a capacitive touch screen connector, mounted on the flipside, that connects to HDMI to Parallel Converter (5)

1.2 COM Connectors

1.2.1 Gumstix - DuoVero COM Connector (v19) (2)

DuoVero COMs are powered by a dual-core ARM Cortex-A9 with 1GB RAM, booting from an on-board uSD card slot.

The DuoVero COM connector provides power and signal transmission for the Gumstix DuoVero series of COMs

Requires:

- VCC_3.3 from 3.3V/1.5A Regulator (14)



- VCC_1.8 from 1.8V/0.6A Regulator (21)

The DuoVero connector provides the following outputs:

- GPMC to 10/100BASE-T (3)
- CSI21 to COM to CSI2 Connector (9)
- VBACKUP to CoinCell Backup (11)
- nRESET to 5.0" Flip-Side Connector For Newhaven Capacitive Multi-Touch Screen (1)
- PMIC_PWM1 to 20-Pin Male Header (8)
- GPIO152 to 20-Pin Male Header (8)
- GPIO153 to 20-Pin Male Header (8)
- PMIC_NRESWARM to Flip-side Tactile Switch (20)
- GPIO151 to 20-Pin Male Header (8)
- GPIO156 to 20-Pin Male Header (8)
- GPIO154 to 20-Pin Male Header (8)
- GPIO155 to 20-Pin Male Header (8)
- HSO to Dual Audio (in / out) (6)
- UART3 to USB-UART (17)
- GPIO134 to 20-Pin Male Header (8)
- GPIO135 to 20-Pin Male Header (8)
- GPIO136 to 20-Pin Male Header (8)
- GPIO137 to 20-Pin Male Header (8)
- GPIO112 to 20-Pin Male Header (8)
- GPIO139 to Flip-side Red LED (24)
- GPIO110 to 20-Pin Male Header (8)
- GPIO122 to Flip-side Blue LED (23)
- nIRQ to 5.0" Flip-Side Connector For Newhaven Capacitive Multi-Touch Screen (1)
- HDMI to HDMI to Parallel Converter (5)
- PMIC_PWM2 to 20-Pin Male Header (8)
- SYS_EN to:
 - 1.8V/0.6A Regulator (21)
 - Flip-side Green LED (22)
- FREF_CLK1_OUT to COM to CSI2 Connector (9)
- USB_HOST to 3-Port USB Hub (10)



- VLOGIC to:
 - 10/100BASE-T (3)
 - 20-Pin Male Header (8)
 - USB-UART (17)
 - 9-Axis IMU (18)
 - Backlight Controller (12)
 - COM to CSI2 Connector (9)
- LINE.IN to Dual Audio (in / out) (6)
- I2C2 to 5.0" Flip-Side Connector For Newhaven Capacitive Multi-Touch Screen (1)
- I2C3 to:
 - 9-Axis IMU (18)
 - COM to CSI2 Connector (9)
- GPIO138 to HDMI to Parallel Converter (5)
- BRIGHTNESS to Backlight Controller (12)
- GPIO168 to COM to CSI2 Connector (9)
- USB_DEVICE to Micro-B Jack (16)
- GPIO121 to Flip-side Tactile Switch (19)
- GPIO83 to 9-Axis IMU (18)
- GPIO82 to 9-Axis IMU (18)
- GPIO81 to 9-Axis IMU (18)

1.3 Network

1.3.1 10/100BASE-T (v10) (3)

This design offers a 10/100 Base-T Ethernet connection to GPMC on Gumstix - DuoVero COM Connector (2).

1.4 Power

1.4.1 Battery & Barrel Power Supply (v1) (4)

This module is able provides 5V 5A DC power to circuit board.

This power jack provides 5V to the following modules:

- Dual Stacked USB Type A (7)
- 20-Pin Male Header (8)
- 3-Port USB Hub (10)



- Backlight Controller (12)
- 3.3V/1.5A Regulator (13)
- 3.3V/1.5A Regulator (14)

1.4.2 CoinCell Backup (v3) (11)

The 6.8mm coin cell battery holder offers a short-term backup power option for your design.

This battery is connected to VBACKUP on Gumstix - DuoVero COM Connector (2).

1.4.3 Backlight Controller (v4) (12)

The backlight controller regulates the intensity of illumination on LCD touch displays

Converts BRIGHTNESS from Gumstix - DuoVero COM Connector (2) to BACKLIGHT on 5.0" Flip-Side Connector For Newhaven Capacitive Multi-Touch Screen (1)

1.4.4 3.3V/1.5A Regulator (v9) (13)

This DC to DC step down regulator provides a 3.3V DC output at 1.5A needed by certain components on this board. It is capable of accepting an input voltage between 3.1 to 16V DC. Currently, its input is 5V from Battery & Barrel Power Supply (4).

This regulator provides 3.3V to:

- 5.0" Flip-Side Connector For Newhaven Capacitive Multi-Touch Screen (1)
- 10/100BASE-T (3)
- HDMI to Parallel Converter (5)
- 3-Port USB Hub (10)
- 9-Axis IMU (18)
- Flip-side Tactile Switch (19)
- Flip-side Tactile Switch (20)
- 1.8V/0.6A Regulator (21)
- Flip-side Green LED (22)
- Flip-side Blue LED (23)
- Flip-side Red LED (24)



1.4.5 3.3V/1.5A Regulator (v9) (14)

This DC to DC step down regulator provides a 3.3V DC output at 1.5A needed by certain components on this board. It is capable of accepting an input voltage between 3.1 to 16V DC. Currently, its input is 5V from Battery & Barrel Power Supply (4).

This regulator provides 3.3V to:

- Gumstix - DuoVero COM Connector (2)
- COM to CSI2 Connector (9)

1.4.6 1.8V/0.6A Regulator (v6) (21)

This DC-DC regulator has an integrated inductor and tiny footprint. It provides power to modules that need a 1.8V input.

It receives 3.3V from 3.3V/1.5A Regulator (13). A SYS_EN signal is provided by .

The following modules receive 1.8V DC from this regulator:

- Gumstix - DuoVero COM Connector (2)

1.5 Connectivity

1.5.1 HDMI to Parallel Converter (v3) (5)

This module connects and converts 5.0" Flip-Side Connector For Newhaven Capacitive Multi-Touch Screen (1) to HDMI on Gumstix - DuoVero COM Connector (2)

1.5.2 USB-UART (v14) (17)

Also known as an FTDI, this USB to UART converter allows a USB connection to the board to behave as a virtual RS232 serial connection. It offers direct and complete access to the system from a development machine.

This USB to UART converter connects a host machine from Micro-B Jack (15) to UART3 on Gumstix - DuoVero COM Connector (2).

1.6 Audio

1.6.1 Dual Audio (in / out) (v9) (6)

These two standard 3-position 3.5mm audio jacks offer stereo line input and stereo audio output. They are connected to Gumstix - DuoVero COM Connector (2).



1.7 USB

1.7.1 Dual Stacked USB Type A (v6) (7)

A dual type-A USB host stacked vertically that allows you to connect USB devices to the board.

It is connected to:

- USBH1 on 3-Port USB Hub (10)
- USBH2 on 3-Port USB Hub (10)

1.7.2 3-Port USB Hub (v10) (10)

This USB hub offers three interfaces for USB ports from USB_HOST on Gumstix - DuoVero COM Connector (2).

This hub is connected to the following USB ports:

- Dual Stacked USB Type A (7)
- Dual Stacked USB Type A (7)

1.7.3 Micro-B Jack (v8) (15)

A USB micro-B port allows your design to connect as a USB device to a USB host.

This module is connected to USB_DEVICE on USB-UART (17).

1.7.4 Micro-B Jack (v8) (16)

A USB micro-B port allows your design to connect as a USB device to a USB host.

This module is connected to USB_DEVICE on Gumstix - DuoVero COM Connector (2).

1.8 Headers

1.8.1 20-Pin Male Header (v8) (8)

A header offering up to 20 pins for various GPIO or PWM signals of your choice.

This module has the following connections:

- VOUT from Battery & Barrel Power Supply (4)
- GPIO154 from Gumstix - DuoVero COM Connector (2)
- GPIO153 from Gumstix - DuoVero COM Connector (2)
- GPIO156 from Gumstix - DuoVero COM Connector (2)
- GPIO155 from Gumstix - DuoVero COM Connector (2)



- GPIO152 from Gumstix - DuoVero COM Connector (2)
- GPIO151 from Gumstix - DuoVero COM Connector (2)
- NC1 from NC (26)
- NC1 from NC (25)
- GPIO112 from Gumstix - DuoVero COM Connector (2)
- VLOGIC from Gumstix - DuoVero COM Connector (2)
- GPIO134 from Gumstix - DuoVero COM Connector (2)
- PMIC_PWM2 from Gumstix - DuoVero COM Connector (2)
- PMIC_PWM1 from Gumstix - DuoVero COM Connector (2)
- GPIO110 from Gumstix - DuoVero COM Connector (2)
- GPIO136 from Gumstix - DuoVero COM Connector (2)
- GPIO135 from Gumstix - DuoVero COM Connector (2)
- GPIO137 from Gumstix - DuoVero COM Connector (2)

1.8.2 COM to CSI2 Connector (v6) (9)

The CSI connector is compatible with Raspberry Pi family cameras.

The CSI port is connected to CSI21 on Gumstix - DuoVero COM Connector (2).

I2C communication is connected to I2C3 on Gumstix - DuoVero COM Connector (2).

REF_CLK is provided by FREF_CLK1_OUT on Gumstix - DuoVero COM Connector (2).

1.8.3 NC (v6) (25)

Implemented as a test pad.

1.8.4 NC (v6) (26)

Implemented as a test pad.

1.9 Sensors

1.9.1 9-Axis IMU (v16) (18)

This module provides 3-axis acceleration, 3-axis rotational rates and 3-axis magnetic field information. It is connected via a SPI bus. Data-ready pins are provided.

Its I2C bus is connected to I2C3 on Gumstix - DuoVero COM Connector (2)

It has the following data ready signals:



- ACCEL_DRDY to GPIO81 on Gumstix - DuoVero COM Connector (2)
- GYRO_DRDY to GPIO82 on Gumstix - DuoVero COM Connector (2)
- MAG_DRDY to GPIO83 on Gumstix - DuoVero COM Connector (2)

1.10 IO

1.10.1 Flip-side Tactile Switch (v4) (19)

This 4.9 sq. mm light touch switch provides a user input for the signal on . It can be found on the flip-side of the board.

1.10.2 Flip-side Tactile Switch (v4) (20)

This 4.9 sq. mm light touch switch provides a user input for the signal on . It can be found on the flip-side of the board.

1.10.3 Flip-side Green LED (v3) (22)

This 1608 standard size green LED, placed on the backside, provides an indicator for the signal SYS_EN on Gumstix - DuoVero COM Connector (2).

1.10.4 Flip-side Blue LED (v3) (23)

This 1608 standard size blue LED, placed on the backside, provides an indicator for the signal GPIO122 on Gumstix - DuoVero COM Connector (2).

1.10.5 Flip-side Red LED (v5) (24)

This 1608 standard size red LED, placed on the backside, provides an indicator for the signal GPIO139 on Gumstix - DuoVero COM Connector (2).

1.11 Mechanical

1.11.1 Mounting Hole (2.2mm)

A #0 mounting hole for securing the board with mounting pins.

1.11.2 Mounting Hole (2.2mm)

A #0 mounting hole for securing the board with mounting pins.



1.11.3 Mounting Hole (2.2mm)

A #0 mounting hole for securing the board with mounting pins.

1.11.4 Mounting Hole (2.2mm)

A #0 mounting hole for securing the board with mounting pins.



2 Module Connections Graph

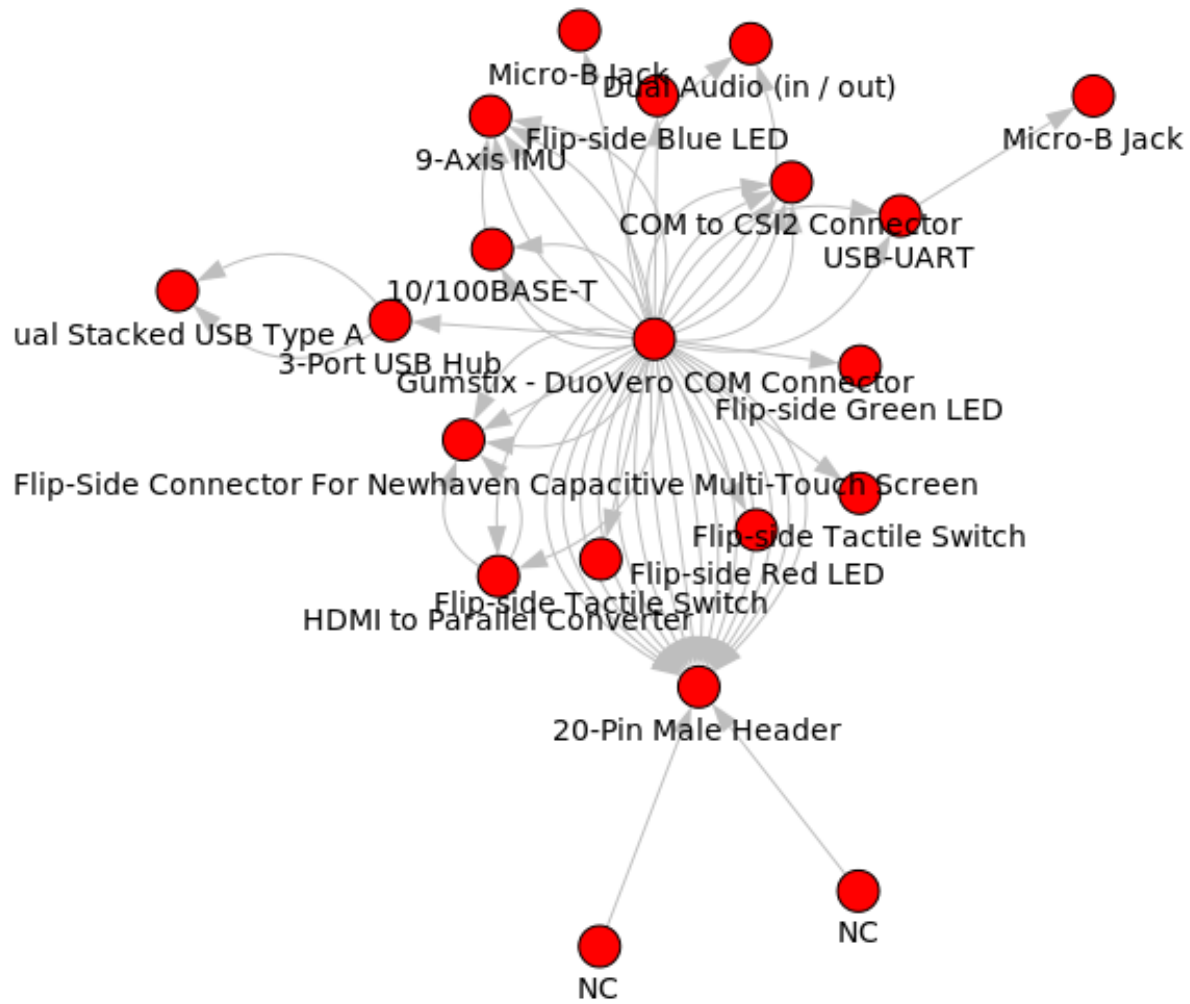
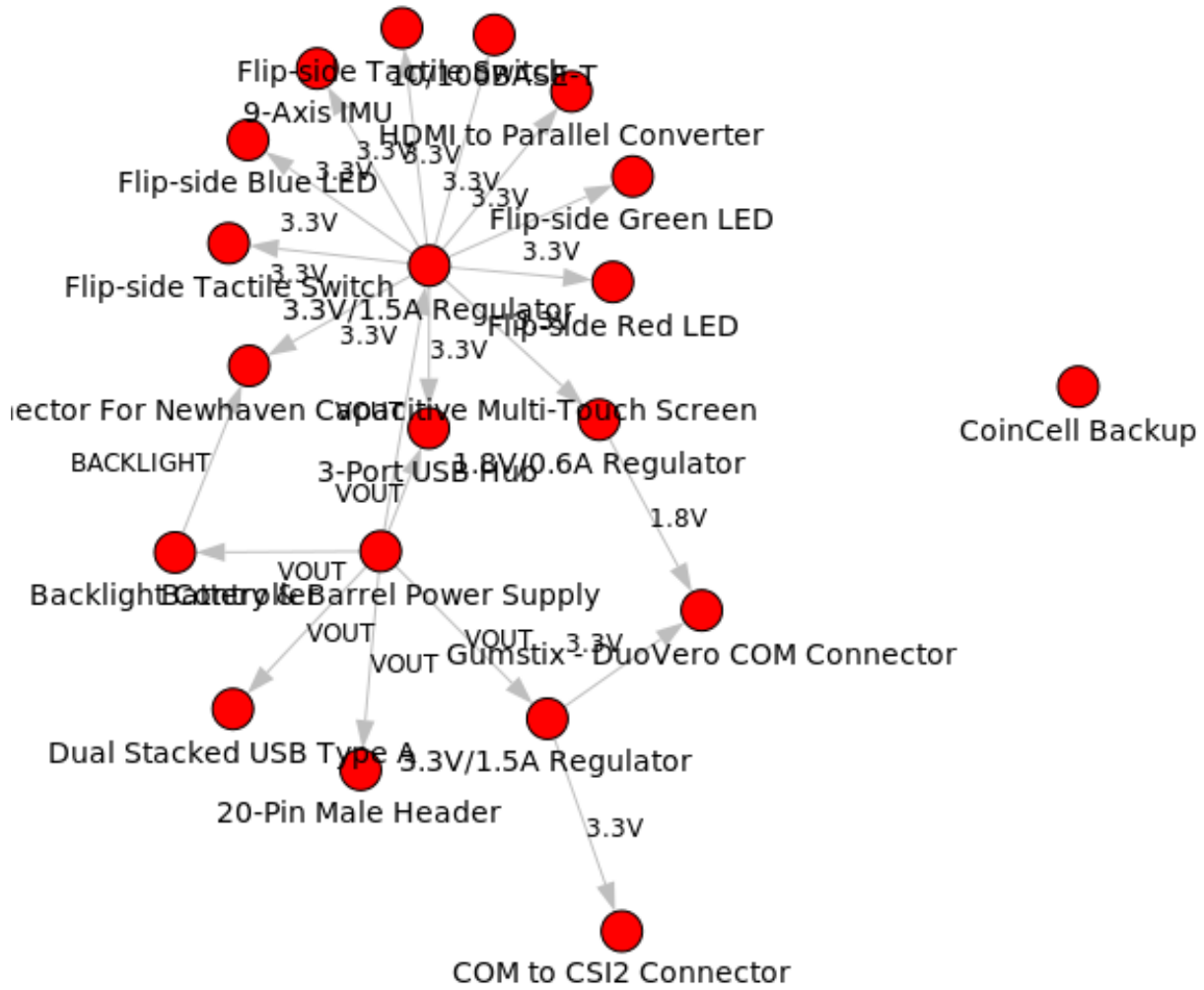


Figure 1: excludes power modules



3 Module Power Graph



Компания «Океан Электроники» предлагает заключение долгосрочных отношений при поставках импортных электронных компонентов на взаимовыгодных условиях!

Наши преимущества:

- Поставка оригинальных импортных электронных компонентов напрямую с производств Америки, Европы и Азии, а так же с крупнейших складов мира;
- Широкая линейка поставок активных и пассивных импортных электронных компонентов (более 30 млн. наименований);
- Поставка сложных, дефицитных, либо снятых с производства позиций;
- Оперативные сроки поставки под заказ (от 5 рабочих дней);
- Экспресс доставка в любую точку России;
- Помощь Конструкторского Отдела и консультации квалифицированных инженеров;
- Техническая поддержка проекта, помощь в подборе аналогов, поставка прототипов;
- Поставка электронных компонентов под контролем ВП;
- Система менеджмента качества сертифицирована по Международному стандарту ISO 9001;
- При необходимости вся продукция военного и аэрокосмического назначения проходит испытания и сертификацию в лаборатории (по согласованию с заказчиком);
- Поставка специализированных компонентов военного и аэрокосмического уровня качества (Xilinx, Altera, Analog Devices, Intersil, Interpoint, Microsemi, Actel, Aeroflex, Peregrine, VPT, Syfer, Eurofarad, Texas Instruments, MS Kennedy, Miteq, Cobham, E2V, MA-COM, Hittite, Mini-Circuits, General Dynamics и др.);

Компания «Океан Электроники» является официальным дистрибьютором и эксклюзивным представителем в России одного из крупнейших производителей разъемов военного и аэрокосмического назначения «JONHON», а так же официальным дистрибьютором и эксклюзивным представителем в России производителя высокотехнологичных и надежных решений для передачи СВЧ сигналов «FORSTAR».



JONHON

«JONHON» (основан в 1970 г.)

Разъемы специального, военного и аэрокосмического назначения:

(Применяются в военной, авиационной, аэрокосмической, морской, железнодорожной, горно- и нефтедобывающей отраслях промышленности)

«FORSTAR» (основан в 1998 г.)

ВЧ соединители, коаксиальные кабели, кабельные сборки и микроволновые компоненты:

(Применяются в телекоммуникациях гражданского и специального назначения, в средствах связи, РЛС, а так же военной, авиационной и аэрокосмической отраслях промышленности).



Телефон: 8 (812) 309-75-97 (многоканальный)

Факс: 8 (812) 320-03-32

Электронная почта: ocean@oceanchips.ru

Web: <http://oceanchips.ru/>

Адрес: 198099, г. Санкт-Петербург, ул. Калинина, д. 2, корп. 4, лит. А