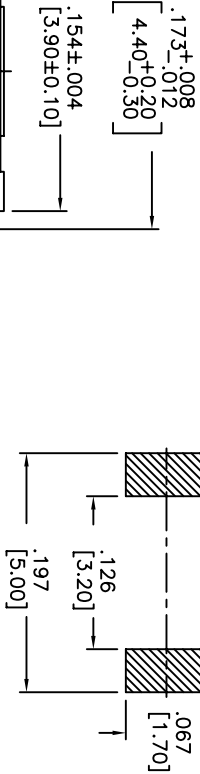
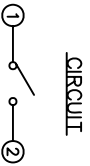
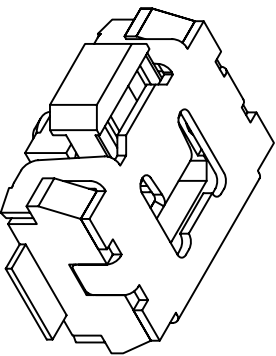
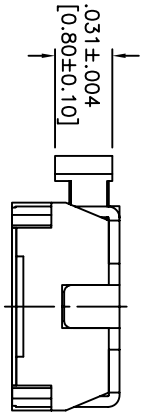
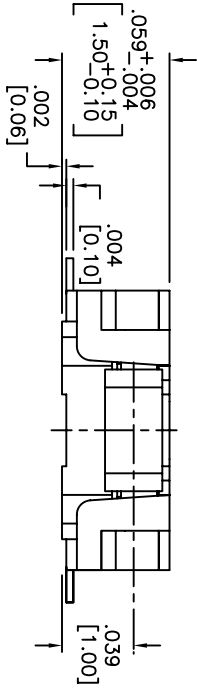
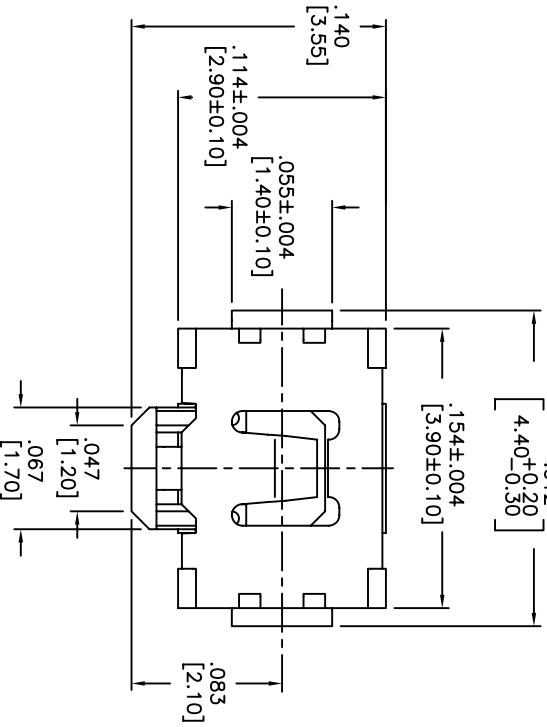


THIS DOCUMENT IS THE PROPERTY OF APDM COMPONENTS AND SHALL NOT BE COPIED, REPRODUCED, DISCLOSED OR USED AS THE BASIS FOR MANUFACTURING OR SALE WITHOUT PERMISSION OF A DULY AUTHORIZED REPRESENTATIVE OF APDM COMPONENTS INC.



HATCHED AREA SHOWS SOLDERING LAND
P.C.B. LAYOUT
UNLESS OTHERWISE SPECIFIED
ALL P.C. TOLERANCES ARE ±.002 [0.05]



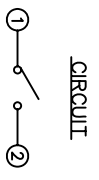
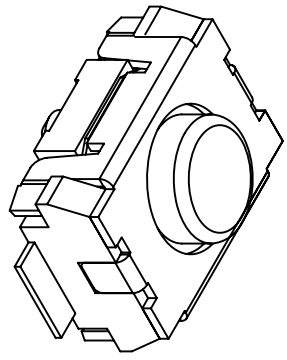
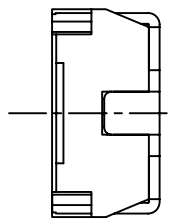
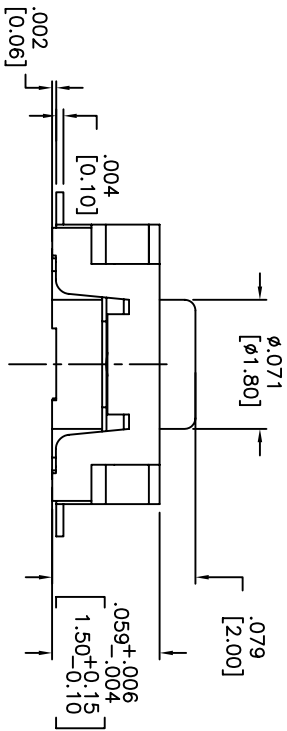
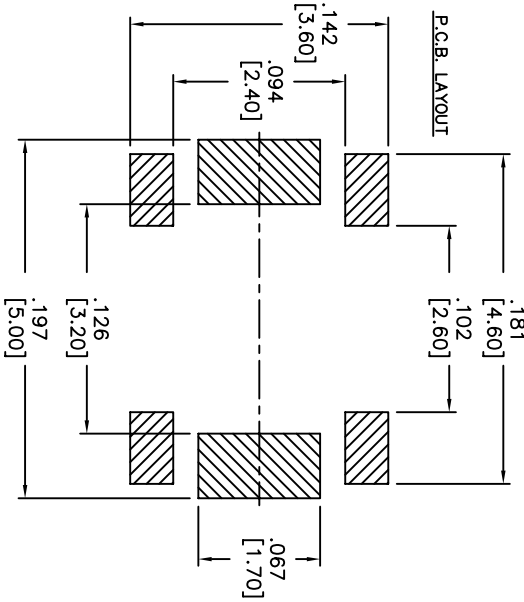
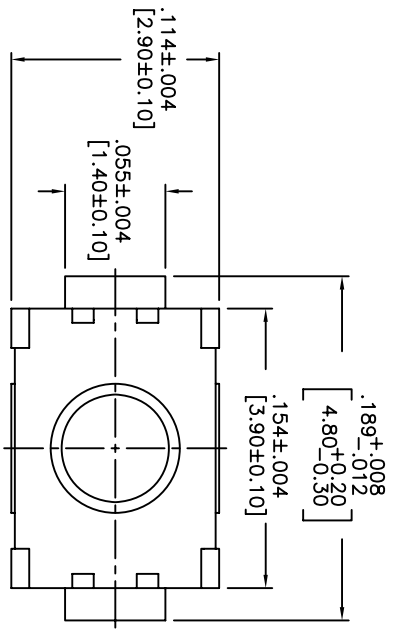
DATE	SYM	REVISION RECORD	DWN.	CK.
5/08	A	ECO# 778	CD	PD

DESCRIPTION: SIDE PUSH MECHANICAL CONTACT SWITCH.
SPECIFICATIONS:
OPERATION FORCE: 220± 65gf
STROKE: 0.2±0.08mm
OPERATION TEMP.: -25°C TO +70°C.
STORAGE TEMP.: -30°C TO +80°C.
ELECTRICAL LIFE: 100,000 CYCLES.
RATING: 50mA, 12VDC.
CONTACT RESISTANCE: 100mΩ MAX.
INSULATION RESISTANCE: 100MΩ MIN. AT 100VDC.
DIELECTRIC STRENGTH: 100VAC/1 MINUTE.
CONTACT ARRANGEMENT: 1 POLE 1 THROW.
VIBRATION TEST: PASSED METHOD 201A
MIL-STD-202F.
SHOCK TEST: 50G PER METHOD 213B CONDITION A OF MIL-STD-202F
MATERIALS:
COVER: STAINLESS STEEL
BASE: LCP HIGH-TEMP. THERMOPLASTIC.
COLOR, WHITE.
STEM: LCP HIGH-TEMP. THERMOPLASTIC.
COLOR, BLACK.
CONTACT DISK: STAINLESS STEEL WITH SILVER CLADDING
TERMINAL: BRASS WITH SILVER PLATING
PACKAGING: TAPE AND REEL (3,500 PIECES PER REEL)
ROHS COMPLIANT
LEAD FREE SOLDERING COMPATIBLE
HAND SOLDERING: 320°c MAX WITH 30 WATT IRON FOR 2 SECONDS
IR REFLOW: 260°C MAX
CUSTOMER PART NO.: 263262

<p>DESIGNER'S SYMBOL</p>		<p>63 Neck Rd. 01835 Haverhill, MA Tel: 978-372-3534 Fax: 978-372-3534</p>		<p>DRN. CJD</p>	
<p>DESIGNER'S INITIALS</p>	<p>TOLERANCES (UNLESS OTHERWISE SPECIFIED)</p> <p>.XX±.XX [0.05] .XXX±.XXX [0.20] .XXXX±.XXXX [0.02]</p> <p>ANGLE = 40.5°</p>	<p>SHEET 1 OF 1</p>	<p>SIZE B</p>	<p>SCALE 15:1</p>	<p>THIRD ANGLE PROJECTION</p>
<p>TITLE TACT SWITCH</p>		<p>DATE 7/31/06</p>	<p>DRAWING NO. AMPFTVTR</p>	<p>REV A</p>	

1 2 3 4 5 6 7 8

THIS DOCUMENT IS THE PROPERTY OF APEN COMPONENTS AND SHALL NOT BE COPIED, REPRODUCED, DISCLOSED OR USED AS THE BASIS FOR MANUFACTURING OR SALE WITHOUT PERMISSION OF A DULY AUTHORIZED REPRESENTATIVE OF APEN COMPONENTS INC.



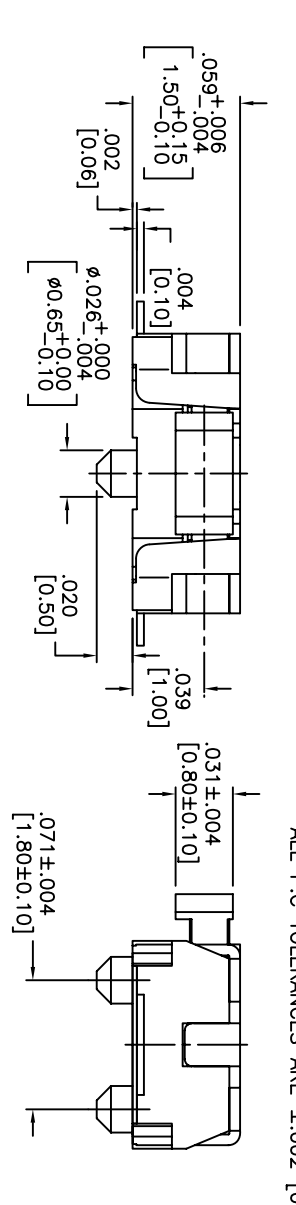
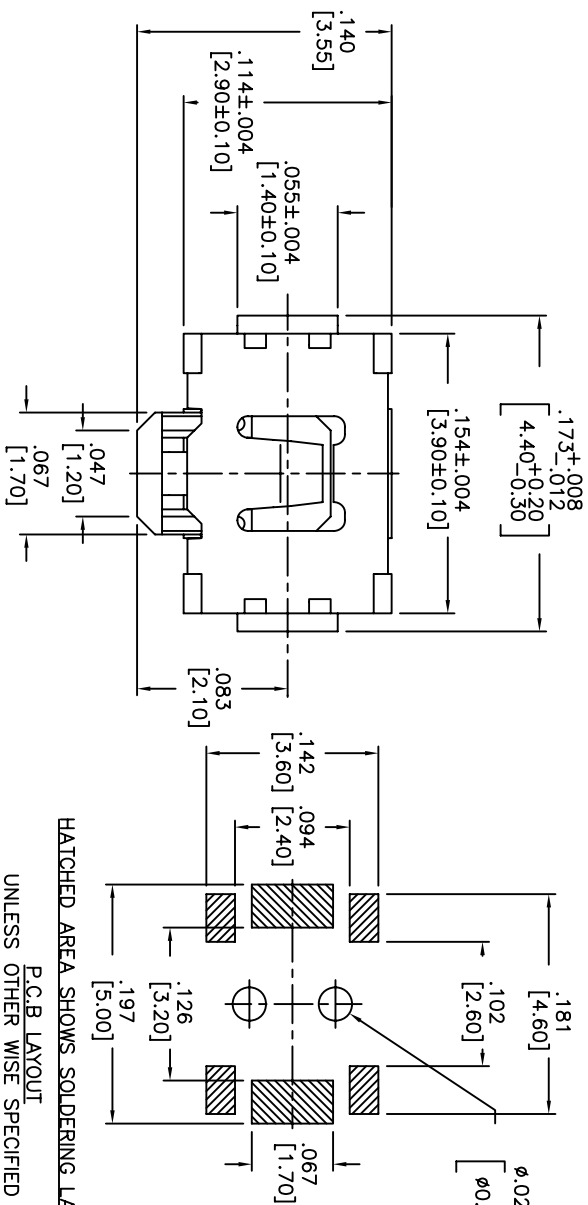
DATE	SYM	REVISION RECORD	DWN.	CK.
5/08	B	ECO# 778	CD	PD

DESCRIPTION: VERTICAL PUSH MECHANICAL CONTACT SWITCH.
 SPECIFICATIONS:
 OPERATION FORCE: 160±50gf
 OPERATION TEMP.: -25°C TO +70°C.
 STORAGE TEMP.: -30°C TO +80°C.
 ELECTRICAL LIFE: 100,000 CYCLES.
 RATING: 50ma, 12VDC.
 VIBRATION RESISTANCE: PASSES METHOD 201A MIL-STD-202F
 SHOCK RESISTANCE: 50G PER METHOD 213B MIL-STD-202F
 CONTACT RESISTANCE: 100mΩ MAX.
 INSULATION RESISTANCE: 100MΩ MIN. AT 100VDC.
 DIELECTRIC STRENGTH: 100VAC/1 MINUTE.
 CONTACT ARRANGEMENT: 1 POLE 1 THROW.
 MATERIALS:
 COVER: STAINLESS STEEL
 BASE: LCP HIGH-TEMP. THERMOPLASTIC.
 COLOR, WHITE.
 STEM: LCP HIGH-TEMP. THERMOPLASTIC.
 COLOR, BLACK
 CONTACT DISK: STAINLESS STEEL WITH SILVER CLADDING
 TERMINAL: BRASS WITH SILVER PLATING
 TAPE: TEFLON.
 TAPE & REEL PACKAGING, 2,000 PER REEL
 SOLDERING:
 HAND SOLDERING: 30 WATT IRON AT 320°C FOR 2 SECONDS
 IR REFLOW: 240°C MAX
 ROHS COMPLIANT

DESIGNER'S INITIAL	63 Neck Rd. Haverhill, MA 01830 APEN COMPONENTS INC. Phone: 978-372-5554	DRN. CJD
TOLERANCES (unless as noted) .XX± = ±0.005 .XXX± = ±0.008 [0.20] .XXXX± = ±0.008 [0.02] ANGLE = 30.5°		
TITLE VERTICAL PUSH TACT SWITCH	SHEET 1 OF 1 SIZE B SCALE 15:1	THIRD ANGLE PROJECTION
DATE 2/4/08	DRAWING NO. AMPPTFGP2VTR	REV B

THIS DOCUMENT IS THE PROPERTY OF APEN COMPONENTS AND SHALL NOT BE COPIED, REPRODUCED, DISCLOSED OR USED AS THE BASIS FOR MANUFACTURING OR SALE WITHOUT PERMISSION OF A DULY AUTHORIZED REPRESENTATIVE OF APEN COMPONENTS INC.

DATE	SYM	REVISION RECORD	DWNL	CK
01/06	A	ECO # 526	CD	PD
5/08	B	ECO# 778	CD	PD



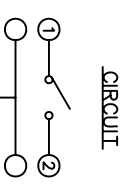
HATCHED AREA SHOWS SOLDERING LAND.
P.C.B. LAYOUT
UNLESS OTHER WISE SPECIFIED
ALL P.C. TOLERANCES ARE ±.002 [0.05]

DESCRIPTION: SIDE PUSH MECHANICAL CONTACT SWITCH.
SPECIFICATIONS:
OPERATION FORCE: 220± 65gf
STROKE: 0.2±0.05mm
OPERATION TEMP.: -25°C TO +70°C.
STORAGE TEMP.: -30° TO +80°. ELECTRICAL LIFE: 100,000 CYCLES. RATING: 50mA, 12VDC. CONTACT RESISTANCE: 100mΩ MAX. INSULATION RESISTANCE: 100MΩ MIN. AT 100VDC. DIELECTRIC STRENGTH: 100VAC/1 MINUTE. CONTACT ARRANGEMENT: 1 POLE 1 THROW. VIBRATION TEST: PASSED METHOD 201A MIL-STD-202F.
SHOCK TEST: 50G PER METHOD 213B CONDITION A OF MIL-STD-202F
MATERIALS:
COVER: STAINLESS STEEL
BASE: LCP HIGH-TEMP. THERMOPLASTIC. COLOR, WHITE.
STEM: LCP HIGH-TEMP. THERMOPLASTIC. COLOR, BLACK.
CONTACT DISK: STAINLESS STEEL WITH SILVER CLADDING
TERMINAL: BRASS WITH SILVER PLATING
PACKAGING: TAPE AND REEL (3,500 PEICES PER REEL)
ROHS COMPLIANT
HAND SOLDERING: 320°C MAX WITH 30 WATT IRON FOR 2 SECONDS
IR REFLOW: 240°C MAX

9A. INSPECT: [Symbol]
DESIGNATES CRITICAL DIMENSION
TOLERANCES (UNLESS OTHERWISE SPECIFIED)
.XX±.XX(0.15)
.XXX±.XX(0.20)
.XXXX±.XX(0.02)
ANGLE = 30.5°

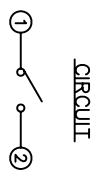
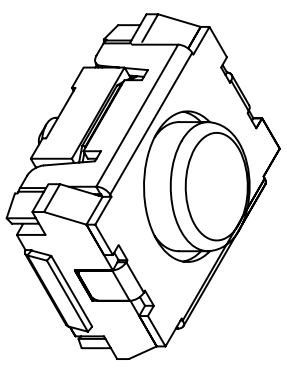
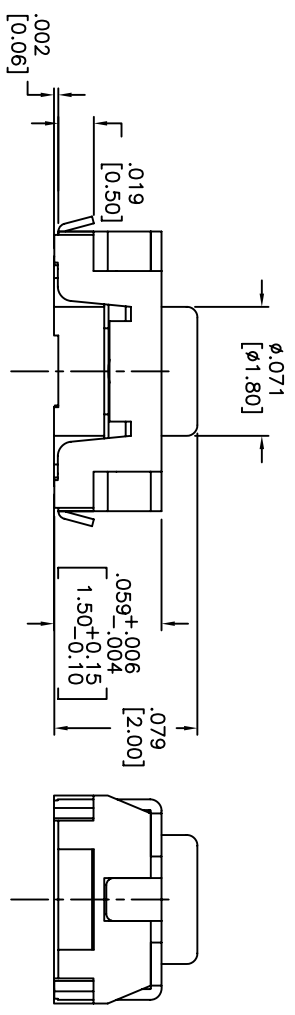
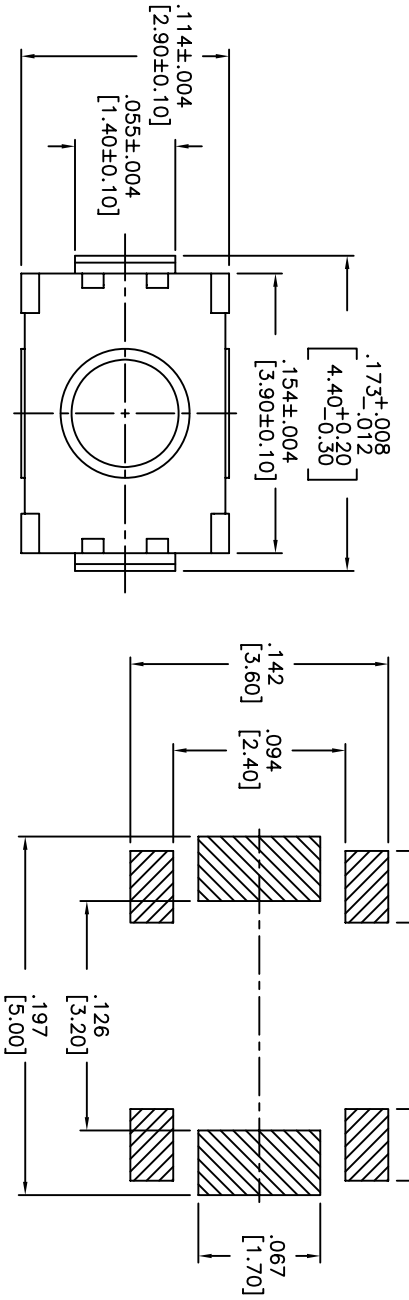
APEN 63 Neck Rd. 01835
Horseshoe Hill, MA
Phone: 978-372-3534 Fax: 978-372-3534
PRN: CJD
BR: PD
THIRD ANGLE PROJECTION

DATE	SHEET	SIZE	SCALE	THIRD ANGLE PROJECTION	REV
06/30/05	1 OF 1	B	15:1		B
DRAWING NO. AMPTCFGVTR					



1 2 3 4 5 6 7 8

THIS DOCUMENT IS THE PROPERTY OF APDM COMPONENTS AND SHALL NOT BE COPIED, REPRODUCED, DISCLOSED OR SALE WITHOUT PERMISSION OF A DULY AUTHORIZED REPRESENTATIVE OF APDM COMPONENTS INC.

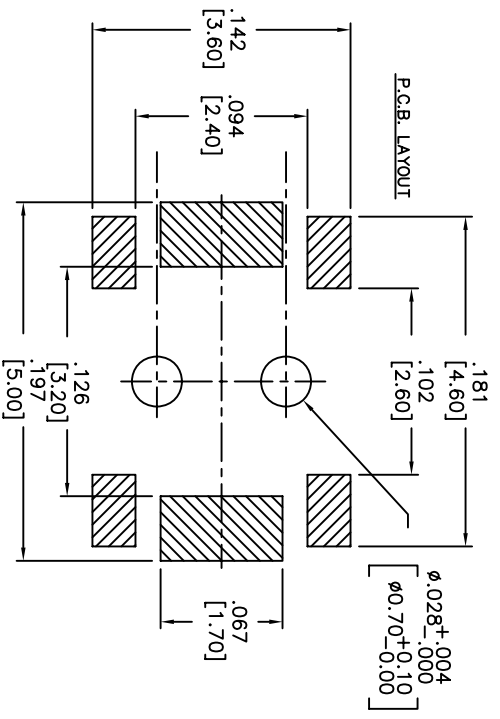
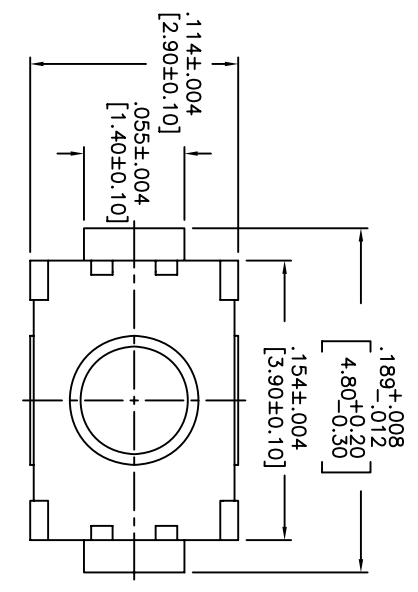


DATE	SYM	REVISION RECORD	DWNL	CK
5/08	B	ECO# 778	CD	PD

DESCRIPTION: VERTICAL PUSH MECHANICAL CONTACT SWITCH.
 SPECIFICATIONS:
 OPERATION FORCE: 160± 50gf
 OPERATION TEMP.: -25°C TO +70°C.
 STORAGE TEMP.: -30°C TO +80°C.
 ELECTRICAL LIFE: 100,000 CYCLES.
 RATING: 50mA, 12VDC.
 VIBRATION RESISTANCE: PASSES METHOD 201A MIL-STD-202F
 SHOCK RESISTANCE: 50G PER METHOD 213B MIL-STD-202F
 CONTACT RESISTANCE: 100mΩ MAX.
 INSULATION RESISTANCE: 100MΩ MIN. AT 100VDC.
 DIELECTRIC STRENGTH: 100VAC/1 MINUTE.
 CONTACT ARRANGEMENT: 1 POLE 1 THROW.
 MATERIALS:
 COVER: STAINLESS STEEL
 BASE: LCP HIGH-TEMP. THERMOPLASTIC.
 COLOR, WHITE.
 STEM: LCP HIGH-TEMP. THERMOPLASTIC.
 COLOR, BLACK.
 CONTACT DISK: STAINLESS STEEL
 WITH SILVER CLADDING
 TERMINAL: BRASS WITH SILVER PLATING
 TAPE: TEFLON.
 TAPE & REEL PACKAGING, 2,000 PER REEL
 SOLDERING:
 HAND SOLDERING: 30 WATT IRON AT 320°C FOR 2 SECONDS
 IR REFLOW: 240°C MAX
 ROHS COMPLIANT

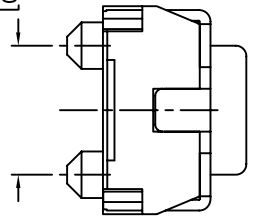
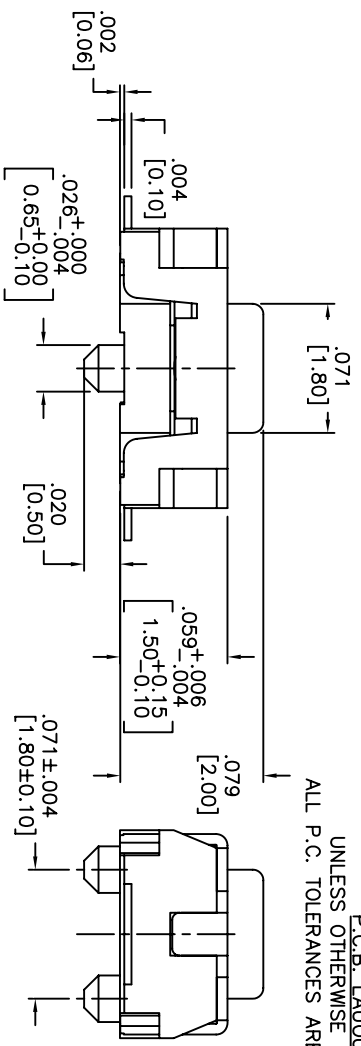
DESIGNER'S CRITICAL DIMENSION				63 Nork Rd. 01835 Haverhill, MA Tel: 978-372-3534 Fax: 978-372-3534		DRN: CJD BR: PJD	
TOLERANCES (UNLESS OTHERWISE SPECIFIED) .XX = ±.02(0.5) .XXX = ±.008(0.20) .XXXX = ±.0008(0.02) ANGLE = 40.5°		TITLE VERTICAL PUSH TACT SWITCH		SHEET 1 OF 1 SIZE B SCALE 15:1		THIRD ANGLE PROJECTION	
DO NOT SCALE DRAWING		DATE 2/4/08		DRAWING NO. AMPTLGP2VTR		REV B	

THIS DOCUMENT IS THE PROPERTY OF APDM COMPONENTS AND SHALL NOT BE COPIED, REPRODUCED, DISCLOSED OR USED AS THE BASIS FOR MANUFACTURING OR SALE WITHOUT PERMISSION OF A DULY AUTHORIZED REPRESENTATIVE OF APDM COMPONENTS INC.

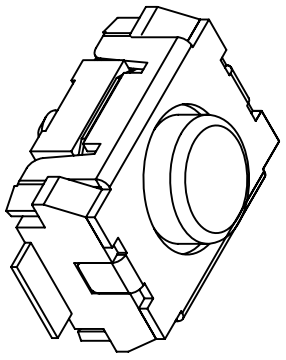


HATCHED AREA SHOWS SOLDERING LAND

P.C.B. LAYOUT
UNLESS OTHERWISE SPECIFIED
ALL P.C. TOLERANCES ARE ±.002 [0.50]



CIRCUIT



DATE	SYM	REVISION RECORD	DWN.	CK.
5/08	B	ECO# 778	CD	PD

DESCRIPTION: VERTICAL PUSH MECHANICAL CONTACT SWITCH.

SPECIFICATIONS:

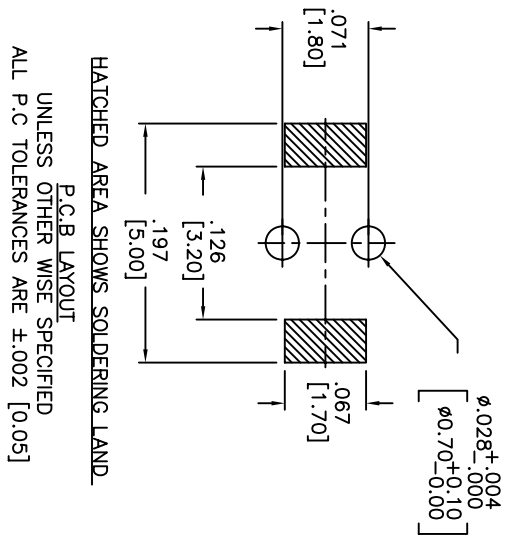
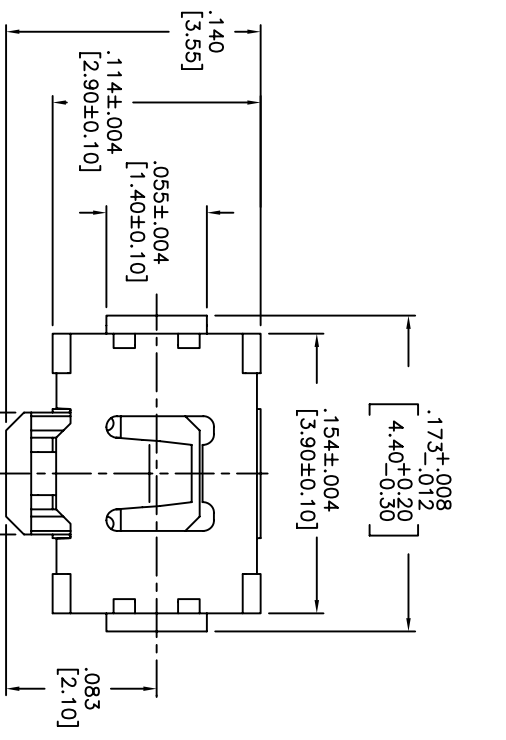
OPERATION FORCE: 160± 50gf
 OPERATION TEMP.: -25°C TO +70°C.
 STORAGE TEMP.: -30°C TO +80°C.
 ELECTRICAL LIFE: 200,000 CYCLES.
 RATING: 50ma, 12VDC.
 VIBRATION RESISTANCE: PASSES METHOD 201A
 MIL-STD-202F
 SHOCK RESISTANCE: 50G PER METHOD 213B
 MIL-STD-202F
 CONTACT RESISTANCE: 100mΩ MAX.
 INSULATION RESISTANCE: 100MΩ MIN. AT 100VDC.
 DIELECTRIC STRENGTH: 100VAC/1 MINUTE.
 CONTACT ARRANGEMENT: 1 POLE 1 THROW.
 TRAVEL: .005 ±.002 [0.13 ±0.05]

MATERIALS:

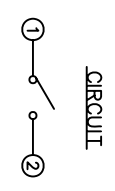
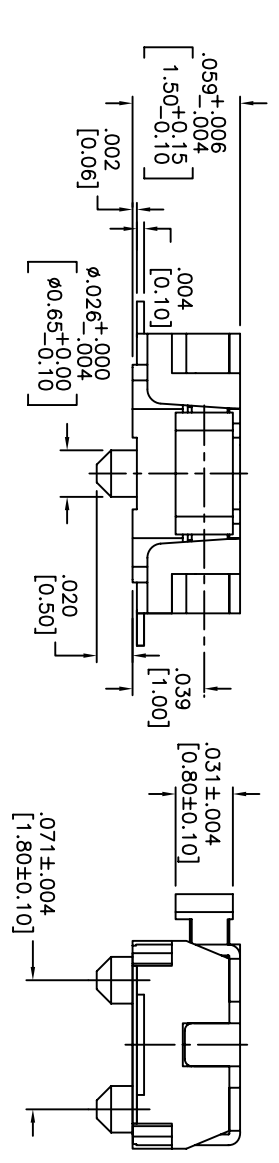
COVER: STAINLESS STEEL
 BASE: LCP HIGH-TEMP. THERMOPLASTIC.
 COLOR, WHITE.
 STEM: LCP HIGH-TEMP. THERMOPLASTIC.
 COLOR, BLACK.
 CONTACT DISK: STAINLESS STEEL WITH SILVER CLADDING
 TERMINAL: BRASS WITH SILVER PLATING
 TAPE: TEFLON.
 TAPE & REEL PACKAGING: 2,000 PER REEL
 SOLDERING:
 HAND SOLDERING: 30 WATT IRON AT 320°C FOR 2 SECONDS
 IR REFLOW: 240°C MAX
 ROHS COMPLIANT

<p>Q.A. INSPECT: DESIGNER: CRITICAL DIMENSION TOLERANCES (except as noted) .X0=±0.015] .X00=±0.008[0.20] .X000=±0.0008[0.02] ANGLE = 30.5°</p>	<p>APDM APDM COMPONENTS INC. 10000 WILLOW LAKE, IA 51359 PH: 515-772-5554 FAX: 515-772-5554</p>	<p>DRN. CJD BR. PJD OK. PJD</p>
<p>DO NOT SCALE DATE: 6/30/05 DRAWING NO. AMPTCFGP2VTR</p>	<p>TITLE: TACT SWITCH</p>	<p>THIRD ANGLE PROJECTION</p>
<p>SHEET 1 OF 1</p>	<p>SIZE B</p>	<p>SCALE 15:1</p>
<p>REV B</p>	<p> </p>	<p> </p>

THIS DOCUMENT IS THE PROPERTY OF APEM COMPONENTS AND SHALL NOT BE COPIED, REPRODUCED, DISCLOSED OR SALE WITHOUT PERMISSION OF A DULY AUTHORIZED REPRESENTATIVE OF APEM COMPONENTS INC.



HATCHED AREA SHOWS SOLDERING LAND
P.C.B. LAYOUT
UNLESS OTHER WISE SPECIFIED
ALL P.C TOLERANCES ARE ±.002 [0.05]



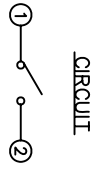
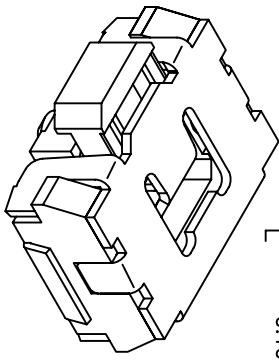
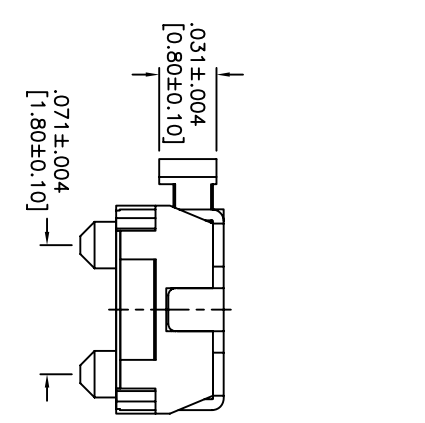
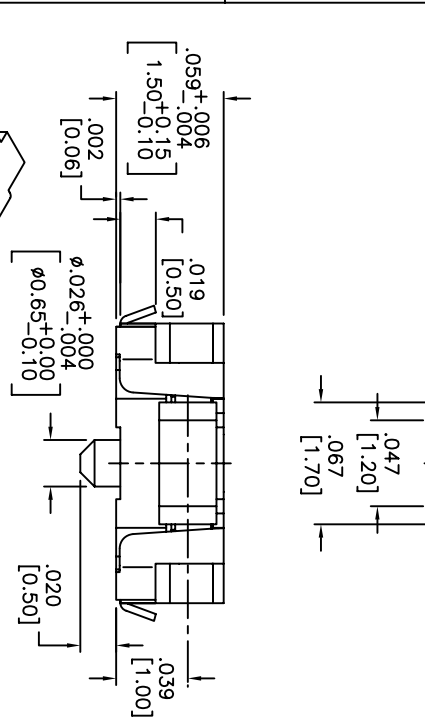
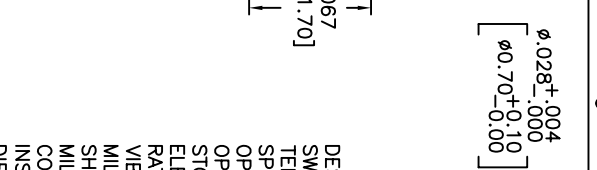
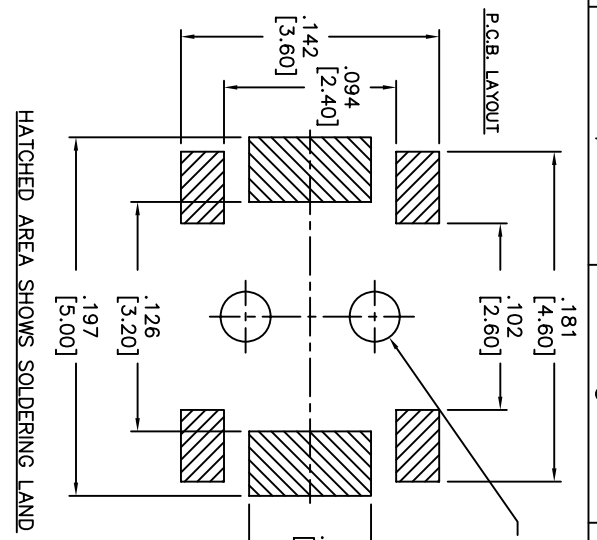
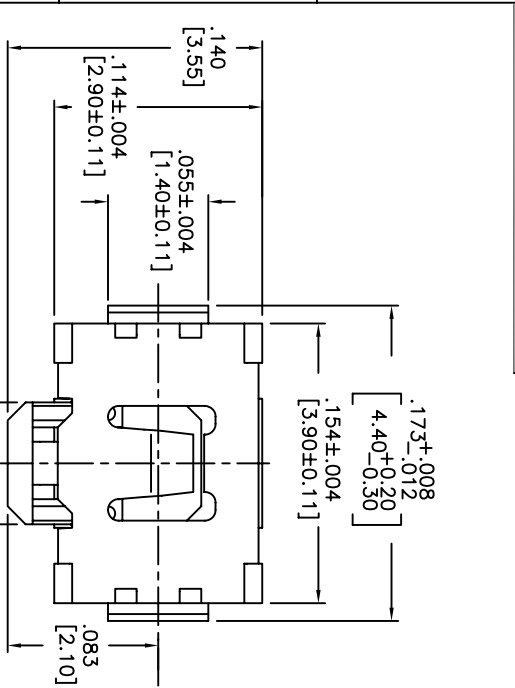
DESCRIPTION: SIDE PUSH MECHANICAL CONTACT SWITCH.
SPECIFICATIONS:
OPERATION FORCE: 220± 65gf
STROKE: 0.2±0.10mm
OPERATION TEMP.: -25°C TO +70°C.
STORAGE TEMP.: -30°C TO +80°C.
ELECTRICAL LIFE: 100,000 CYCLES.
RATING: 50mA, 12VDC.
CONTACT RESISTANCE: 100mΩ MAX.
INSULATION RESISTANCE: 100MΩ MIN. AT 100VDC.
DIELECTRIC STRENGTH: 100VAC/1 MINUTE.
CONTACT ARRANGEMENT: 1 POLE 1 THROW.
VIBRATION TEST: PASSED METHOD 201A
MIL-STD-202F.
SHOCK TEST: 50G PER METHOD 213B CONDITION A OF MIL-STD-202F
MATERIALS:
COVER: STAINLESS STEEL
BASE: LCP HIGH-TEMP. THERMOPLASTIC.
COLOR, WHITE.
STEM: LCP HIGH-TEMP. THERMOPLASTIC.
COLOR, BLACK.
CONTACT DISK: STAINLESS STEEL
WITH SILVER CLADDING
TERMINAL: BRASS WITH SILVER PLATING
PACKAGING: TAPE AND REEL
(3,500 PEICES PER REEL)
ROHS COMPLIANT
LEAD FREE SOLDERING COMPATIBLE
HAND SOLDERING: 320°C MAX WITH 30 WATT IRON FOR 2 SECONDS
IR REFLOW: 260°C MAX

DATE	SYM	REVISION RECORD	DWN.	CK.
5/08	B	ECO# 778	CD	PD

Q.A. INSPECT 		63 Neck Rd. Hawthorne, NJ 07035 Phone: 973-772-5554 Fax: 973-772-5554		PPN: CJD BR: PJD OR: PJD	
DESIGNER'S CRITICAL DIMENSION TOLERANCES (UNLESS AS NOTED) .XX±.02[0.5] .XXX±.008[0.20] .XXXX±.0008[0.02] ANGLE = 30.5°		INCH 1 OF 1		SHEET SIZE B 15:1	
TITLE TACT SWITCH		THIRD ANGLE PROJECTION			
DO NOT SCALE DRAWING		DATE 5/2/06		DRAWING NO. AMPTCFVTR	

1 2 3 4 5 6 7 8

THIS DOCUMENT IS THE PROPERTY OF APDM COMPONENTS AND SHALL NOT BE COPIED, REPRODUCED, DISCLOSED OR USED AS THE BASIS FOR MANUFACTURING OR SALE WITHOUT PERMISSION OF A DULY AUTHORIZED REPRESENTATIVE OF APDM COMPONENTS INC.



DATE	SYM	REVISION RECORD	DWNL	CK
1/06	B	ECO# 526	CD	PD
5/08	C	ECO# 778	CD	PD

DESCRIPTION: SIDE PUSH MECHANICAL CONTACT SWITCH, WITH BENDING AND GROUNDING TERMINALS.

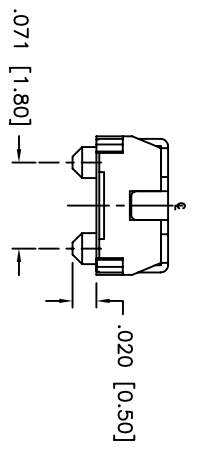
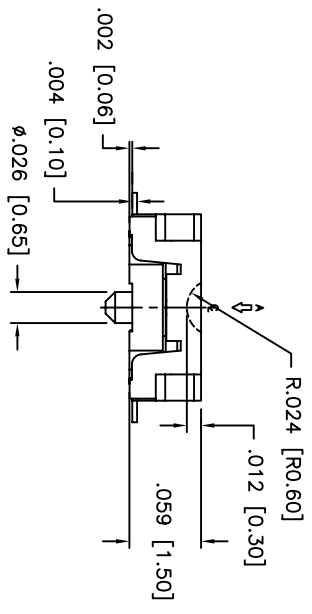
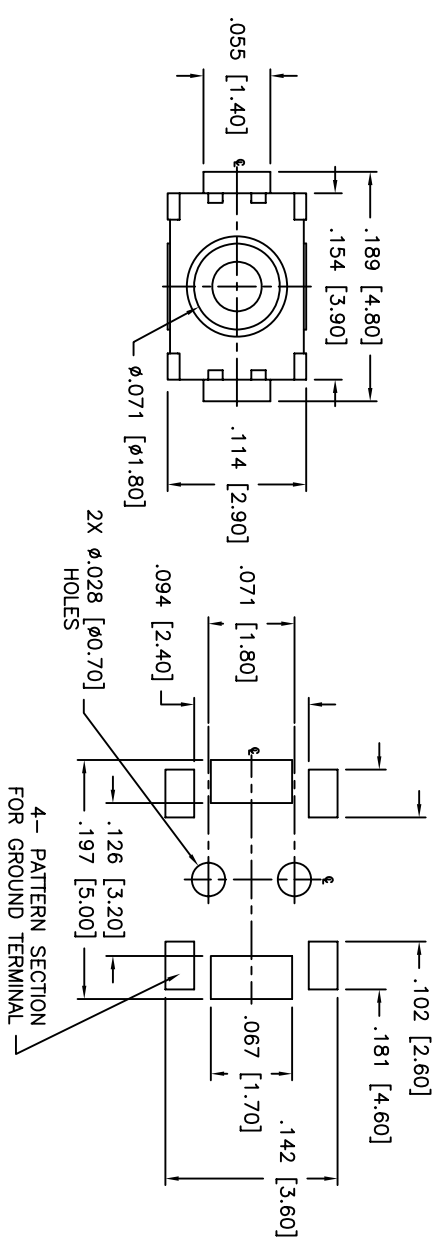
SPECIFICATIONS:
 OPERATION FORCE: 220± 65gf
 OPERATION TEMP.: -25°C TO +70°C.
 STORAGE TEMP.: -30°C TO +80°C.
 ELECTRICAL LIFE: 100,000 CYCLES.
 RATING: 50ma, 12VDC.
 VIBRATION RESISTANCE: PASSES METHOD 201A MIL-STD-202F
 SHOCK RESISTANCE: 50G PER METHOD 213B MIL-STD-202F
 CONTACT RESISTANCE: 100MΩ MAX.
 INSULATION RESISTANCE: 100MΩ MIN. AT 100VDC.
 DIELECTRIC STRENGTH: 100VAC/1 MINUTE.
 CONTACT ARRANGEMENT: 1 POLE 1 THROW.
 STROKE: .008 +.004 [0.2 +0.05]

MATERIALS:
 COVER: STAINLESS STEEL
 BASE: LCP HIGH-TEMP. THERMOPLASTIC.
 COLOR: WHITE.
 STEM:LCP HIGH-TEMP. THERMOPLASTIC.
 COLOR: BLACK.
 CONTACT DISK: STAINLESS STEEL WITH SILVER CLADDING
 TERMINAL: BRASS WITH SILVER PLATING
 TAPE: TEFLON.
 TAPE & REEL PACKAGING, 3500 PER REEL

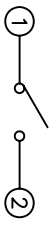
HAND SOLDERING: 30 WATT IRON AT 320°C FOR 2 SECONDS
 IR REFLOW: 240°C MAX
 ROHS COMPLIANT

Q.A. INSPECT: 	DESIGNER'S SYMBOL: 	DATE: 06/30/05	DRAWING NO.: AMPPTCLGVTR
APDM APDM COMPONENTS INC. 63 NACK RD. HARTFORD, CT 01855 TEL: 860-233-3534 FAX: 860-233-3534	REV.: CJD CHK.: PJD THIRD ANGLE PROJECTION	NO. SHEET: 1 OF 1	SCALE: 15:1
TOLERANCES (UNLESS OTHERWISE SPECIFIED): .XX±=.XX .XXX±=.XXX .XXXX±=.XXXX ANGLE = 30.5°	TITLE: TACT SWITCH	DATE: 06/30/05	DRAWING NO.: AMPPTCLGVTR

THIS DOCUMENT IS THE PROPERTY OF APDM COMPONENTS AND SHALL NOT BE COPIED, REPRODUCED, DISCLOSED OR USED AS THE BASIS FOR MANUFACTURING OR SALE WITHOUT PERMISSION OF A DULY AUTHORIZED REPRESENTATIVE OF APDM COMPONENTS INC.



UNLESS OTHERWISE SPECIFIED
P.C. TOLERANCES ARE $\pm .002$ [0.05]



SCHEMATIC

DATE	SYM	REVISION RECORD	DWN.	CK.
1/06	A	ECO # 526	CD	PD
5/08	B	ECO# 778	CD	PD

DESCRIPTION: SPST, NORMALLY OPEN, MOMENTARY, SURFACE MOUNT TACT SWITCH WITH LOCATING PINS

SPECIFICATIONS:
CONTACT RATING: 50mA @ 12VDC
INITIAL CONTACT RESISTANCE: 100MOHMS MAX.
INSULATION RESISTANCE: 100MOHMS MIN. @ 500VDC
DIELECTRIC STRENGTH: 100VAC FOR 1 MINUTE
ELECTRICAL LIFE: 200,000 CYCLES MIN.
OPERATING TEMPERATURE RANGE: -25°C to +70°C
STOP STRENGTH: MAX 3kgf VERTICAL STATIC LOAD
CONT. FOR 15 SEC.

ACTUATION FORCE: 160± 50gf
STORAGE TEMPERATURE RANGE: -30°C TO +80°C
SHOCK RESISTANCE: 50G PER METHOD 213B, MIL-STD-202F
VIBRATION RESISTANCE: PASSES METHOD 201A, MIL-STD-202F
SOLDERING:
IR REFLOW: 240°C MAX.
HAND SOLDERING: 350°C MAX. FOR 3 SECONDS MAX.
(30 WATT IRON MAX.)

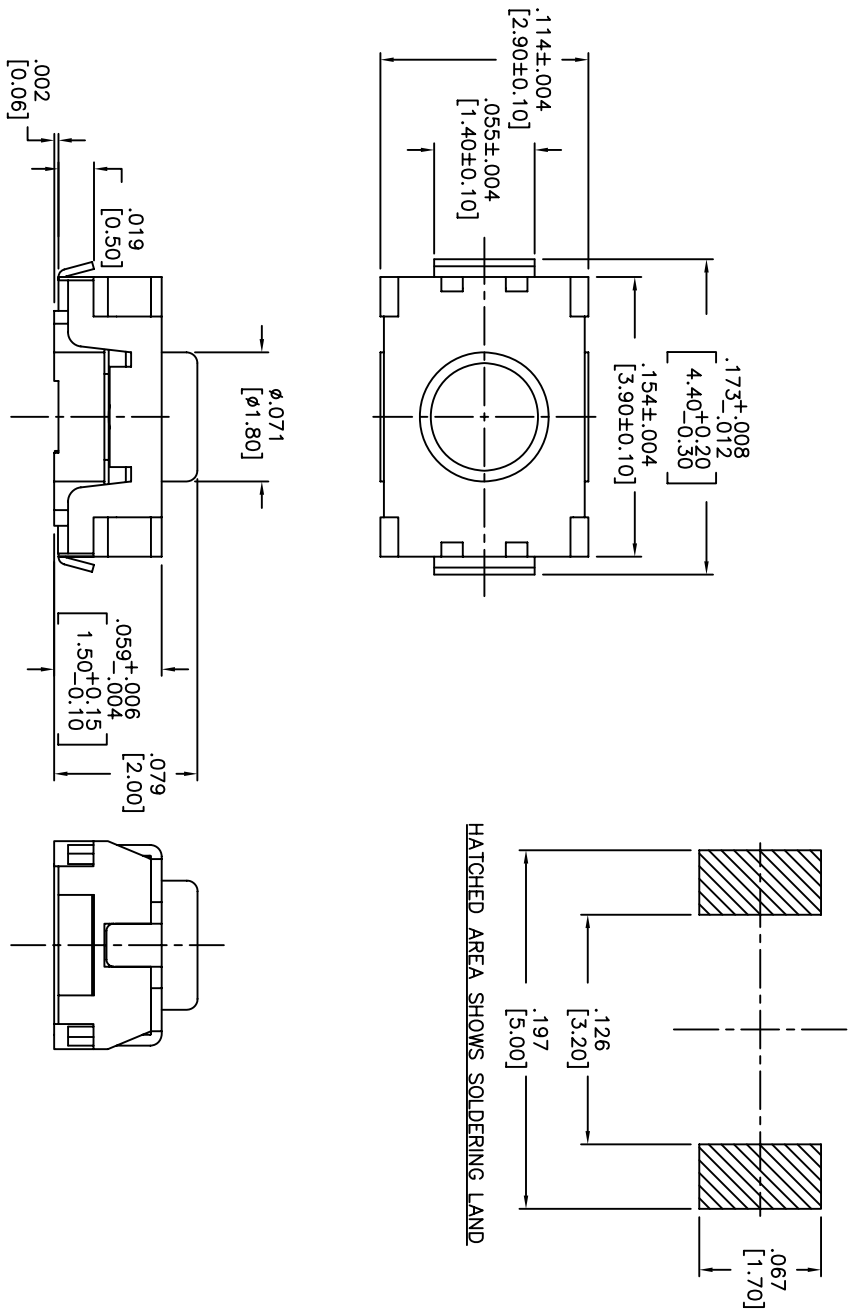
MATERIALS:
BASE: LCP HIGH-TEMP THERMOPLASTIC UL94V-0
ACTUATOR: LCP HIGH-TEMP THERMOPLASTIC UL94V-0
COVER: STAINLESS STEEL
TERMINALS: SILVER PLATED BRASS
SHORTING CONTACT: STAINLESS STEEL WITH SILVER CLADDING
TAPE: TEFLON
ROHS COMPLIANT

NOTE:
1. AFTER SOLDERING, RETURN SWITCHES TO NORMAL TEMPERATURE BEFORE WASHING.

Q.A. INSPECT: 		DESIGNER'S INITIAL: DIMENSION		DRN. CJD	
TOLERANCES (UNLESS AS NOTED) .XX=±.02[0.5] .XXX=±.008[0.20] .XXXX=±.0008[0.02] ANGLE = 30.5°		SHEET 1 OF 1		BR. PJD	
TITLE TACT SWITCH WITH LOCATING PINS		SIZE 10:1		THIRD ANGLE PROJECTION	
DATE 07/20/05		DRAWING NO. AMPTCFGP1VTR		REV B	

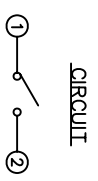
THIS DOCUMENT IS THE PROPERTY OF APDM COMPONENTS AND SHALL NOT BE COPIED, REPRODUCED, DISCLOSED OR USED AS THE BASIS FOR MANUFACTURING OR SALE WITHOUT PERMISSION OF A DULY AUTHORIZED REPRESENTATIVE OF APDM COMPONENTS INC.

P.C.B. LAYOUT



DATE	SYM	REVISION RECORD	DWN.	CK.
1/06	A	ECO# 526	CD	PD
5/08	B	ECO# 778	CD	PD

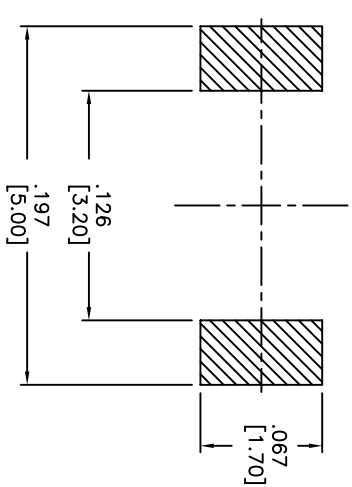
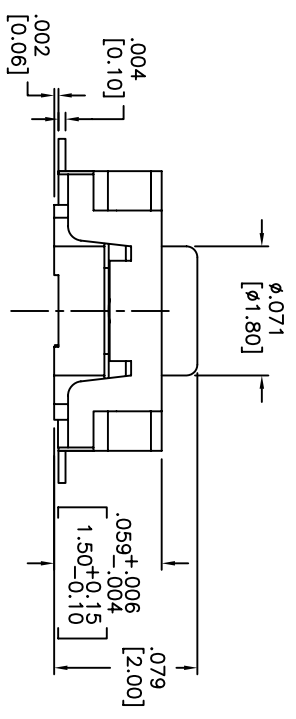
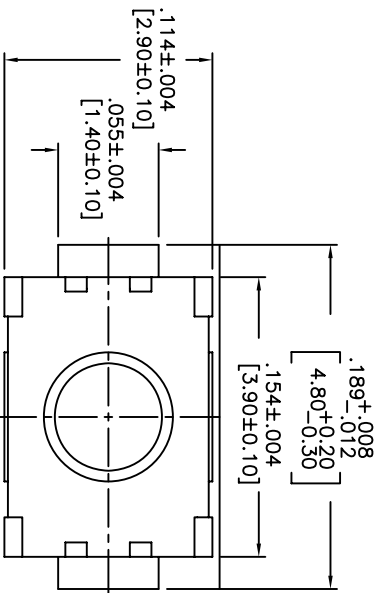
DESCRIPTION: VERTICAL PUSH MECHANICAL CONTACT SWITCH.
 SPECIFICATIONS:
 OPERATION FORCE: 220 ± 65gf
 OPERATION TEMP.: -25°C TO +70°C.
 STORAGE TEMP.: -30°C TO +80°C.
 ELECTRICAL LIFE: 200,000 CYCLES.
 RATING: 50mA, 12VDC.
 VIBRATION RESISTANCE: PASSES METHOD 201A
 MIL-STD-202F
 SHOCK RESISTANCE: 50G PER METHOD 213B
 MIL-STD-202F
 CONTACT RESISTANCE: 100mΩ MAX.
 INSULATION RESISTANCE: 100MΩ MIN. AT 100VDC.
 DIELECTRIC STRENGTH: 100VAC/1 MINUTE.
 CONTACT ARRANGEMENT: 1 POLE 1 THROW.
 MATERIALS:
 COVER: STAINLESS STEEL
 BASE: LCP HIGH-TEMP. THERMOPLASTIC.
 COLOR, WHITE.
 STEM: LCP HIGH-TEMP. THERMOPLASTIC.
 COLOR, BLACK.
 CONTACT DISK: STAINLESS STEEL WITH SILVER CLADDING
 TERMINAL: BRASS WITH SILVER PLATING
 TAPE & REEL PACKAGING, 2,000 PER REEL
 SOLDERING:
 HAND SOLDERING: 30 WATT IRON AT 320°C FOR 2 SECONDS
 IR REFLOW: 240°C MAX
 ROHS COMPLIANT
 LEAD FREE PROCESS COMPATIBLE



Q.A. INSPECT: 		DESIGNER'S CRITICAL DIMENSION TOLERANCES (except as noted) .XX = ±.02 [0.5] .XXX = ±.008 [0.20] .XXXX = ±.0008 [0.02] ANGLE = 40.5°		APDM 63 Neck Rd. Hendersonville, NC 27535 Phone: 704-772-5554 Fax: 704-772-5554		DRN. CJD BR. BR. OR. PJD THIRD ANGLE PROJECTION	
DO NOT SCALE DATE: 01/23/06		SHEET 1 OF 1 SIZE B SCALE 15:1		TITLE TACT SWITCH		DRAWING NO. AMPTLP2VTR	
						REV B	

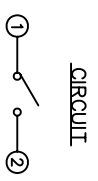
THIS DOCUMENT IS THE PROPERTY OF APDM COMPONENTS AND SHALL NOT BE COPIED, REPRODUCED, DISCLOSED OR SALE WITHOUT PERMISSION OF A DULY AUTHORIZED REPRESENTATIVE OF APDM COMPONENTS INC.

P.C.B. LAYOUT



HATCHED AREA SHOWS SOLDERING LAND

DESCRIPTION: VERTICAL PUSH MECHANICAL CONTACT SWITCH.
 SPECIFICATIONS:
 OPERATION FORCE: 160± 50gf
 OPERATION TEMP.: -25°C TO +70°C.
 STORAGE TEMP.: -30°C TO +80°C.
 ELECTRICAL LIFE: 200,000 CYCLES.
 RATING: 50mA, 12VDC.
 VIBRATION RESISTANCE: PASSES METHOD 201A
 MIL-STD-202F
 SHOCK RESISTANCE: 50G PER METHOD 213B
 MIL-STD-202F
 CONTACT RESISTANCE: 100mΩ MAX.
 INSULATION RESISTANCE: 100MΩ MIN. AT 100VDC.
 DIELECTRIC STRENGTH: 100VAC/1 MINUTE.
 CONTACT ARRANGEMENT: 1 POLE 1 THROW.
 MATERIALS:
 COVER: STAINLESS STEEL
 BASE: LCP HIGH-TEMP. THERMOPLASTIC.
 COLOR, WHITE.
 STEM: LCP HIGH-TEMP. THERMOPLASTIC.
 COLOR, BLACK.
 CONTACT DISK: STAINLESS STEEL WITH SILVER CLADDING
 TERMINAL: BRASS WITH SILVER PLATING
 TAPE: TEFLON.
 TAPE & REEL PACKAGING, 2,000 PER REEL
 SOLDERING:
 HAND SOLDERING: 30 WATT IRON AT 320°C FOR 2 SECONDS
 IR REFLOW: 260°C MAX
 RoHS COMPLIANT
 LEAD FREE PROCESS COMPATIBLE



DATE	SYM	REVISION RECORD	DWN.	CK.
5/08	B	ECO# 778	CD	PD

Q.A. INSPECT:		DESIGNER'S INITIAL:		DWN.:		CJD	
DIMENSION:		TOLERANCES (UNLESS OTHERWISE SPECIFIED):		SHEET:		1 OF 1	
.XX = ±.02 [0.5]		.XXX = ±.008 [0.20]		SIZE:		B	
.XXXX = ±.0008 [0.02]		ANGLE = 30.5°		SCALE:		15:1	
DO NOT SCALE		DATE:		DRAWING NO.:		AMPTFP2VTR	
01/23/06				REV.:		B	

1 2 3 4 5 6 7 8

Компания «Океан Электроники» предлагает заключение долгосрочных отношений при поставках импортных электронных компонентов на взаимовыгодных условиях!

Наши преимущества:

- Поставка оригинальных импортных электронных компонентов напрямую с производств Америки, Европы и Азии, а так же с крупнейших складов мира;
- Широкая линейка поставок активных и пассивных импортных электронных компонентов (более 30 млн. наименований);
- Поставка сложных, дефицитных, либо снятых с производства позиций;
- Оперативные сроки поставки под заказ (от 5 рабочих дней);
- Экспресс доставка в любую точку России;
- Помощь Конструкторского Отдела и консультации квалифицированных инженеров;
- Техническая поддержка проекта, помощь в подборе аналогов, поставка прототипов;
- Поставка электронных компонентов под контролем ВП;
- Система менеджмента качества сертифицирована по Международному стандарту ISO 9001;
- При необходимости вся продукция военного и аэрокосмического назначения проходит испытания и сертификацию в лаборатории (по согласованию с заказчиком);
- Поставка специализированных компонентов военного и аэрокосмического уровня качества (Xilinx, Altera, Analog Devices, Intersil, Interpoint, Microsemi, Actel, Aeroflex, Peregrine, VPT, Syfer, Eurofarad, Texas Instruments, MS Kennedy, Miteq, Cobham, E2V, MA-COM, Hittite, Mini-Circuits, General Dynamics и др.);

Компания «Океан Электроники» является официальным дистрибьютором и эксклюзивным представителем в России одного из крупнейших производителей разъемов военного и аэрокосмического назначения «JONHON», а так же официальным дистрибьютором и эксклюзивным представителем в России производителя высокотехнологичных и надежных решений для передачи СВЧ сигналов «FORSTAR».



JONHON

«JONHON» (основан в 1970 г.)

Разъемы специального, военного и аэрокосмического назначения:

(Применяются в военной, авиационной, аэрокосмической, морской, железнодорожной, горно- и нефтедобывающей отраслях промышленности)

«FORSTAR» (основан в 1998 г.)

ВЧ соединители, коаксиальные кабели, кабельные сборки и микроволновые компоненты:

(Применяются в телекоммуникациях гражданского и специального назначения, в средствах связи, РЛС, а так же военной, авиационной и аэрокосмической отраслях промышленности).



Телефон: 8 (812) 309-75-97 (многоканальный)

Факс: 8 (812) 320-03-32

Электронная почта: ocean@oceanchips.ru

Web: <http://oceanchips.ru/>

Адрес: 198099, г. Санкт-Петербург, ул. Калинина, д. 2, корп. 4, лит. А