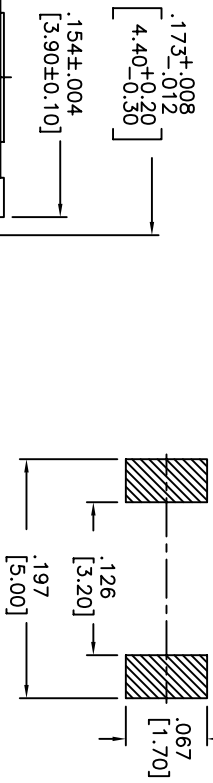
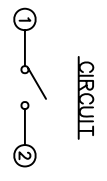
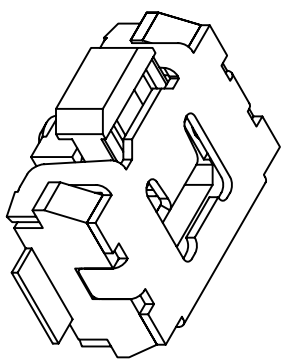
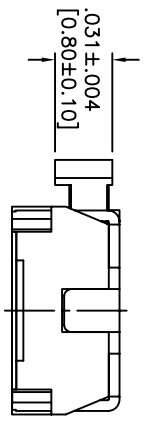
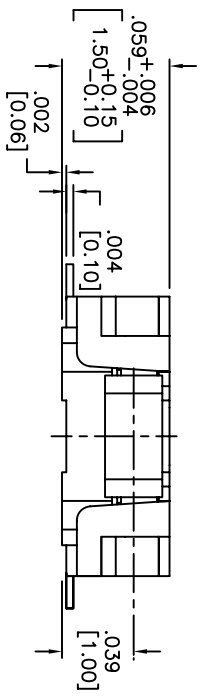
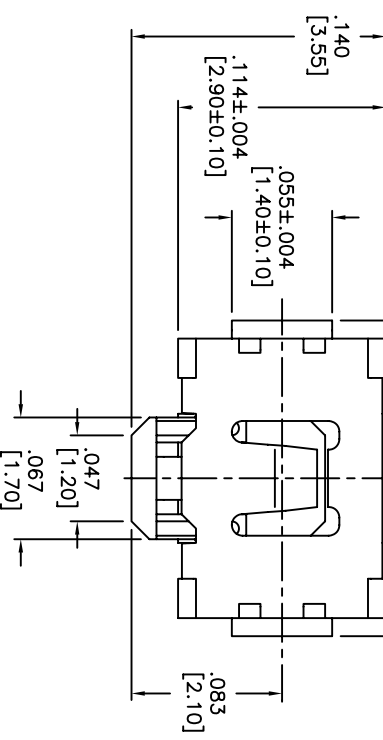


THIS DOCUMENT IS THE PROPERTY OF APDM COMPONENTS AND SHALL NOT BE COPIED, REPRODUCED, DISCLOSED OR USED AS THE BASIS FOR MANUFACTURING OR SALE WITHOUT PERMISSION OF A DULY AUTHORIZED REPRESENTATIVE OF APDM COMPONENTS INC.



HATCHED AREA SHOWS SOLDERING LAND  
P.C.B. LAYOUT  
UNLESS OTHERWISE SPECIFIED  
ALL P.C. TOLERANCES ARE ±.002 [0.05]



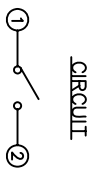
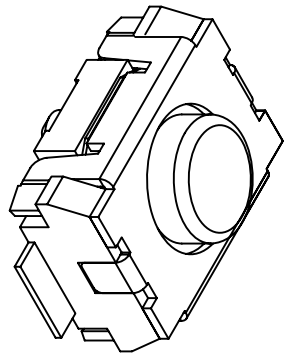
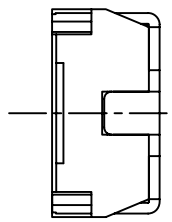
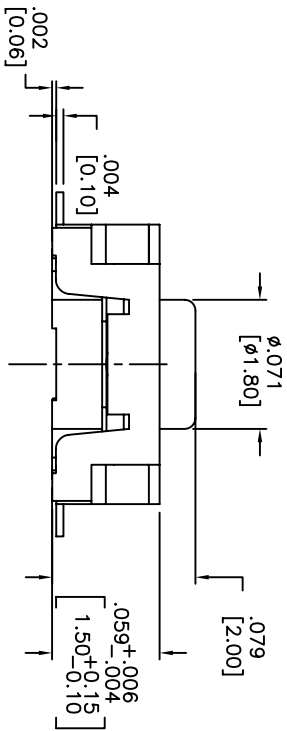
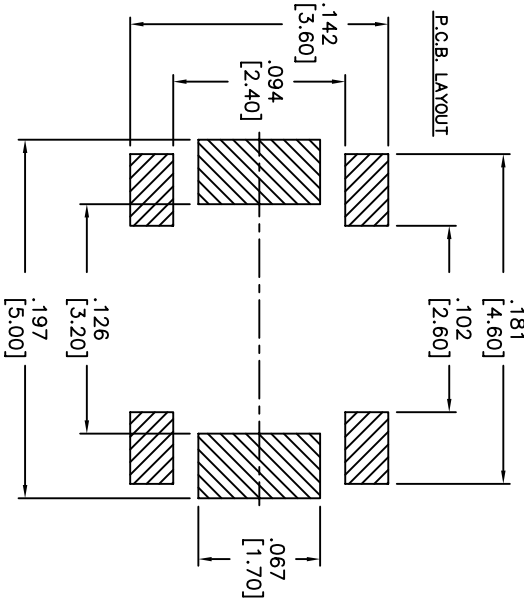
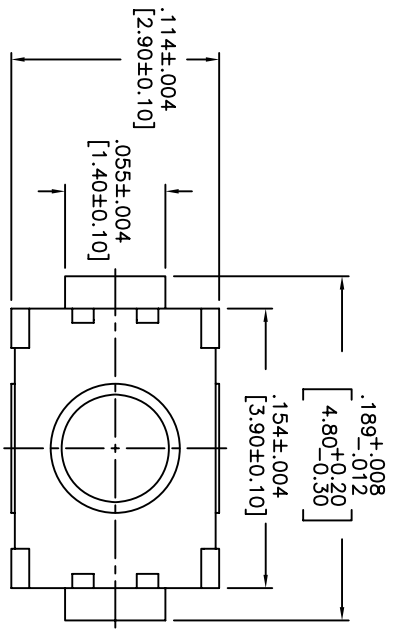
DATE	SYM	REVISION RECORD	DWN.	CK.
5/08	A	ECO# 778	CD	PD

DESCRIPTION: SIDE PUSH MECHANICAL CONTACT SWITCH.  
SPECIFICATIONS:  
OPERATION FORCE: 220± 65gf  
STROKE: 0.2±0.08mm  
OPERATION TEMP.: -25°C TO +70°C.  
STORAGE TEMP.: -30°C TO +80°C.  
ELECTRICAL LIFE: 100,000 CYCLES.  
RATING: 50mA, 12VDC.  
CONTACT RESISTANCE: 100mΩ MAX.  
INSULATION RESISTANCE: 100MΩ MIN. AT 100VDC.  
DIELECTRIC STRENGTH: 100VAC/1 MINUTE.  
CONTACT ARRANGEMENT: 1 POLE 1 THROW.  
VIBRATION TEST: PASSED METHOD 201A  
MIL-STD-202F.  
SHOCK TEST: 50G PER METHOD 213B CONDITION A OF MIL-STD-202F  
MATERIALS:  
COVER: STAINLESS STEEL  
BASE: LCP HIGH-TEMP. THERMOPLASTIC.  
COLOR, WHITE.  
STEM: LCP HIGH-TEMP. THERMOPLASTIC.  
COLOR, BLACK.  
CONTACT DISK: STAINLESS STEEL WITH SILVER CLADDING  
TERMINAL: BRASS WITH SILVER PLATING  
PACKAGING: TAPE AND REEL (3,500 PIECES PER REEL)  
ROHS COMPLIANT  
LEAD FREE SOLDERING COMPATIBLE  
HAND SOLDERING: 320°c MAX WITH 30 WATT IRON FOR 2 SECONDS  
IR REFLOW: 260°C MAX

CUSTOMER PART NO.: 263262

<p>DESIGNER'S INITIAL</p> <p>TOLERANCES (UNLESS OTHERWISE SPECIFIED)</p> <p>.XX±.XX [0.05]</p> <p>.XXX±.XXX [0.20]</p> <p>.XXXX±.XXXX [0.02]</p> <p>ANGLE = 40.5°</p>		<p>9A. INSPECT</p> <p>APDM</p> <p>63 Neck Rd. 01835 Haverhill, MA Phone: 978-372-3534 Fax: 978-372-3534</p>		<p>DRN. CJD</p> <p>BR. PJD</p>	
<p>TITLE</p> <p>TACT SWITCH</p>		<p>SHEET 1 OF 1</p> <p>SIZE B</p> <p>SCALE 15:1</p>		<p>THIRD ANGLE PROJECTION</p>	
<p>DATE</p> <p>7/31/06</p>		<p>DRAWING NO.</p> <p>AMPTFVTR</p>		<p>REV</p> <p>A</p>	

THIS DOCUMENT IS THE PROPERTY OF APEN COMPONENTS AND SHALL NOT BE COPIED, REPRODUCED, DISCLOSED OR USED AS THE BASIS FOR MANUFACTURING OR SALE WITHOUT PERMISSION OF A DULY AUTHORIZED REPRESENTATIVE OF APEN COMPONENTS INC.



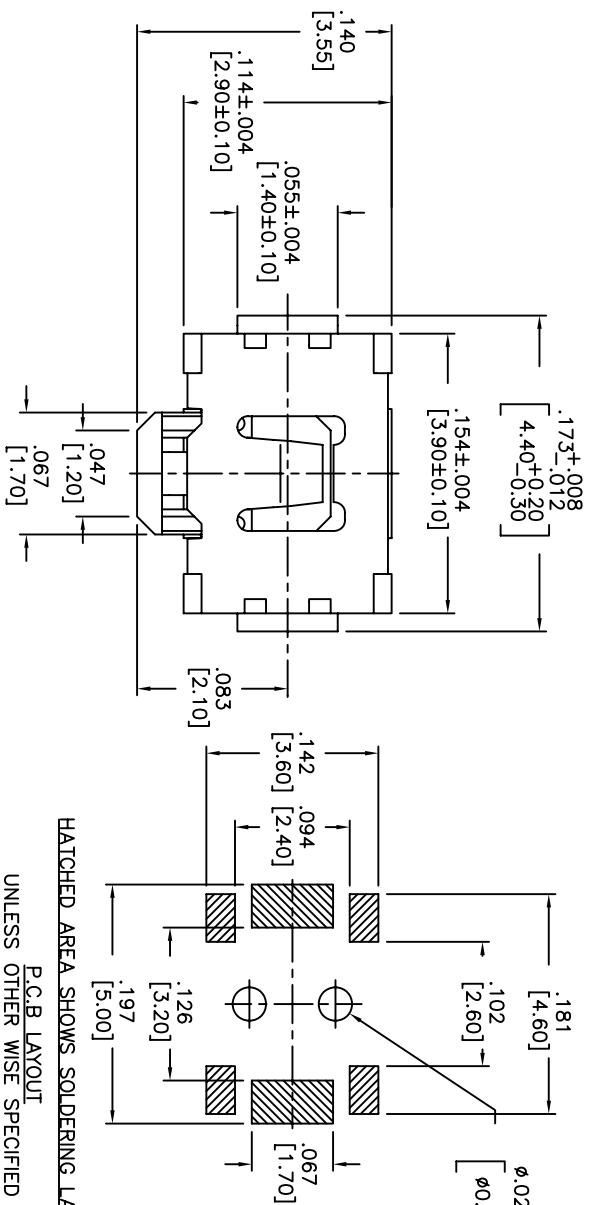
DATE	SYM	REVISION RECORD	DWN.	CK.
5/08	B	ECO# 778	CD	PD

DESCRIPTION: VERTICAL PUSH MECHANICAL CONTACT SWITCH.  
 SPECIFICATIONS:  
 OPERATION FORCE: 160±50gf  
 OPERATION TEMP.: -25°C TO +70°C.  
 STORAGE TEMP.: -30°C TO +80°C.  
 ELECTRICAL LIFE: 100,000 CYCLES.  
 RATING: 50ma, 12VDC.  
 VIBRATION RESISTANCE: PASSES METHOD 201A MIL-STD-202F  
 SHOCK RESISTANCE: 50G PER METHOD 213B MIL-STD-202F  
 CONTACT RESISTANCE: 100mΩ MAX.  
 INSULATION RESISTANCE: 100MΩ MIN. AT 100VDC.  
 DIELECTRIC STRENGTH: 100VAC/1 MINUTE.  
 CONTACT ARRANGEMENT: 1 POLE 1 THROW.  
 MATERIALS:  
 COVER: STAINLESS STEEL  
 BASE: LCP HIGH-TEMP. THERMOPLASTIC.  
 COLOR, WHITE.  
 STEM: LCP HIGH-TEMP. THERMOPLASTIC.  
 COLOR, BLACK  
 CONTACT DISK: STAINLESS STEEL WITH SILVER CLADDING  
 TERMINAL: BRASS WITH SILVER PLATING  
 TAPE: TEFLON.  
 TAPE & REEL PACKAGING, 2,000 PER REEL  
 SOLDERING:  
 HAND SOLDERING: 30 WATT IRON AT 320°C FOR 2 SECONDS  
 IR REFLOW: 240°C MAX  
 ROHS COMPLIANT

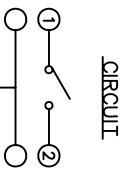
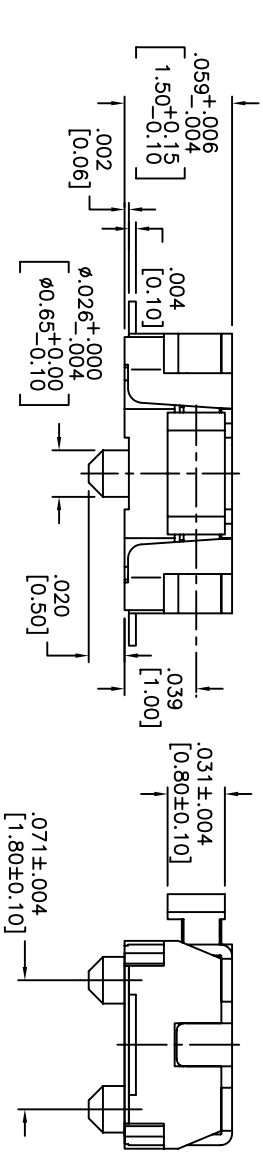
DESIGNER'S INITIAL	63 Neck Rd. Haverhill, MA 01830 APEN COMPONENTS INC. Phone: 978-372-5554	DRN. CJD
TOLERANCES (unless as noted) .XX± = ±0.005 .XXX = ±0.0008 [0.20] .XXXX = ±0.0008 [0.02] ANGLE = 30.5°	1 OF 1	BR: PJD
TITLE VERTICAL PUSH TACT SWITCH	SIZE 15:1	THIRD ANGLE PROJECTION
DATE 2/4/08	DRAWING NO. AMPPTFGP2VTR	REV B

THIS DOCUMENT IS THE PROPERTY OF APEN COMPONENTS AND SHALL NOT BE COPIED, REPRODUCED, DISCLOSED OR USED AS THE BASIS FOR MANUFACTURING OR SALE WITHOUT PERMISSION OF A DULY AUTHORIZED REPRESENTATIVE OF APEN COMPONENTS INC.

DATE	SYM	REVISION RECORD	DWNL	CK
01/06	A	ECO # 526	CD	PD
5/08	B	ECO# 778	CD	PD



HATCHED AREA SHOWS SOLDERING LAND  
P.C.B. LAYOUT  
UNLESS OTHERWISE SPECIFIED  
ALL P.C. TOLERANCES ARE ±.002 [0.05]

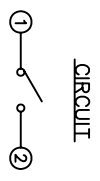
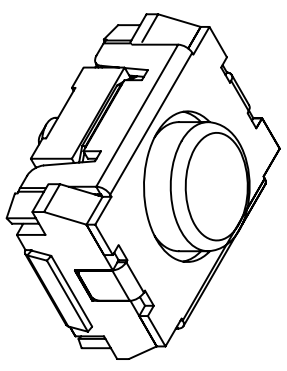
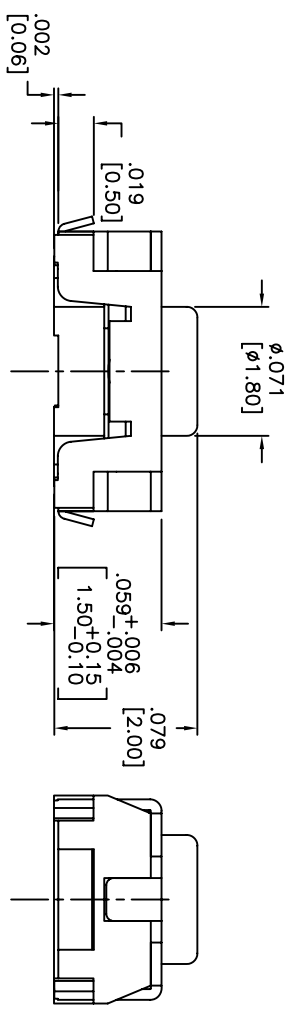
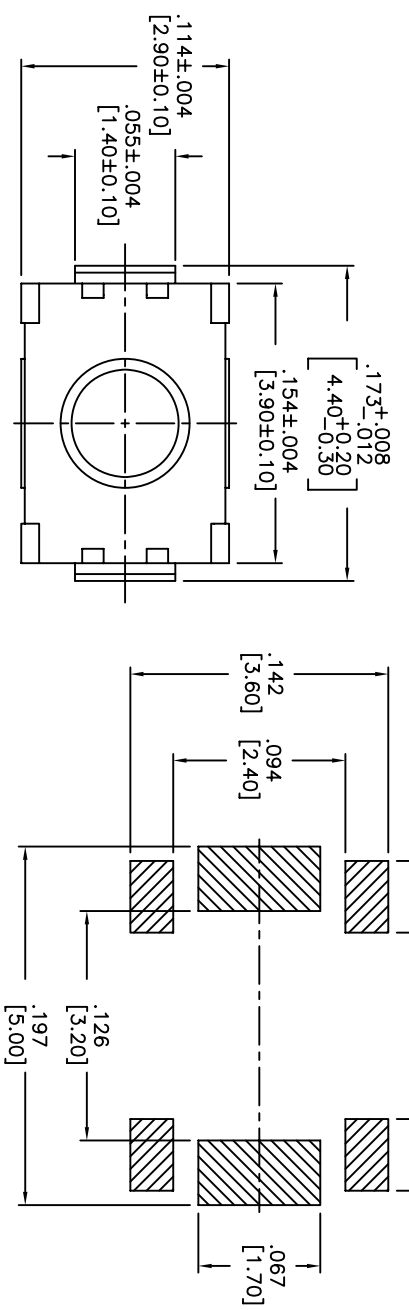


DESCRIPTION: SIDE PUSH MECHANICAL CONTACT SWITCH.  
SPECIFICATIONS:  
OPERATION FORCE: 220± 65gf  
STROKE: 0.2±0.09mm  
OPERATION TEMP.: -25°C TO +70°C.  
STORAGE TEMP.: -30° TO +80°.  
ELECTRICAL LIFE: 100,000 CYCLES.  
RATING: 50mA, 12VDC.  
CONTACT RESISTANCE: 100mΩ MAX.  
INSULATION RESISTANCE: 100MΩ MIN. AT 100VDC.  
DIELECTRIC STRENGTH: 100VAC/1 MINUTE.  
CONTACT ARRANGEMENT: 1 POLE 1 THROW.  
VIBRATION TEST: PASSED METHOD 201A MIL-STD-202F.  
SHOCK TEST: 50G PER METHOD 213B CONDITION A OF MIL-STD-202F  
MATERIALS:  
COVER: STAINLESS STEEL  
BASE: LCP HIGH-TEMP. THERMOPLASTIC.  
COLOR, WHITE.  
STEM:LCP HIGH-TEMP. THERMOPLASTIC.  
COLOR, BLACK.  
CONTACT DISK: STAINLESS STEEL WITH SILVER CLADDING  
TERMINAL:BRASS WITH SILVER PLATING  
PACKAGING: TAPE AND REEL (3,500 PEICES PER REEL)  
ROHS COMPLIANT  
HAND SOLDERING: 320°C MAX WITH 30 WATT IRON FOR 2 SECONDS  
IR REFLOW: 240°C MAX

DESIGNER'S INITIAL		G.A. INSPECT		PRN:	CJD
DIMENSION		TOLERANCES (UNLESS OTHERWISE SPECIFIED)		BR:	PD
INCH		FRACTIONAL		THIRD ANGLE PROJECTION	
1 OF 1		15:1			
DATE		DRAWING NO.		REV	
06/30/05		AMPTCFGVTR		B	

A 1 2 3 4 5 6 7 8

THIS DOCUMENT IS THE PROPERTY OF APDM COMPONENTS AND SHALL NOT BE COPIED, REPRODUCED, DISCLOSED OR SALE WITHOUT PERMISSION OF A DULY AUTHORIZED REPRESENTATIVE OF APDM COMPONENTS INC.

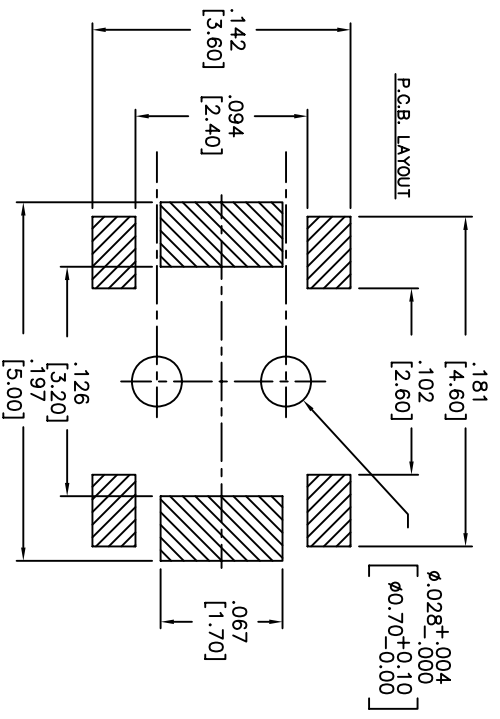
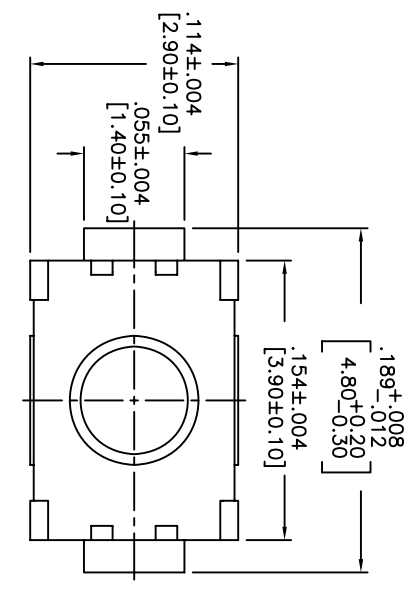


DATE	SYM	REVISION RECORD	DWNL	CK
5/08	B	ECO# 778	CD	PD

DESCRIPTION: VERTICAL PUSH MECHANICAL CONTACT SWITCH.  
 SPECIFICATIONS:  
 OPERATION FORCE: 160± 50gf  
 OPERATION TEMP.: -25°C TO +70°C.  
 STORAGE TEMP.: -30°C TO +80°C.  
 ELECTRICAL LIFE: 100,000 CYCLES.  
 RATING: 50mA, 12VDC.  
 VIBRATION RESISTANCE: PASSES METHOD 201A MIL-STD-202F  
 SHOCK RESISTANCE: 50G PER METHOD 213B MIL-STD-202F  
 CONTACT RESISTANCE: 100mΩ MAX.  
 INSULATION RESISTANCE: 100MΩ MIN. AT 100VDC.  
 DIELECTRIC STRENGTH: 100VAC/1 MINUTE.  
 CONTACT ARRANGEMENT: 1 POLE 1 THROW.  
 MATERIALS:  
 COVER: STAINLESS STEEL  
 BASE: LCP HIGH-TEMP. THERMOPLASTIC.  
 COLOR, WHITE.  
 STEM: LCP HIGH-TEMP. THERMOPLASTIC.  
 COLOR, BLACK.  
 CONTACT DISK: STAINLESS STEEL  
 WITH SILVER CLADDING  
 TERMINAL: BRASS WITH SILVER PLATING  
 TAPE: TEFLON.  
 TAPE & REEL PACKAGING, 2,000 PER REEL  
 SOLDERING:  
 HAND SOLDERING: 30 WATT IRON AT 320°C FOR 2 SECONDS  
 IR REFLOW: 240°C MAX  
 ROHS COMPLIANT

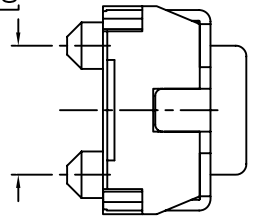
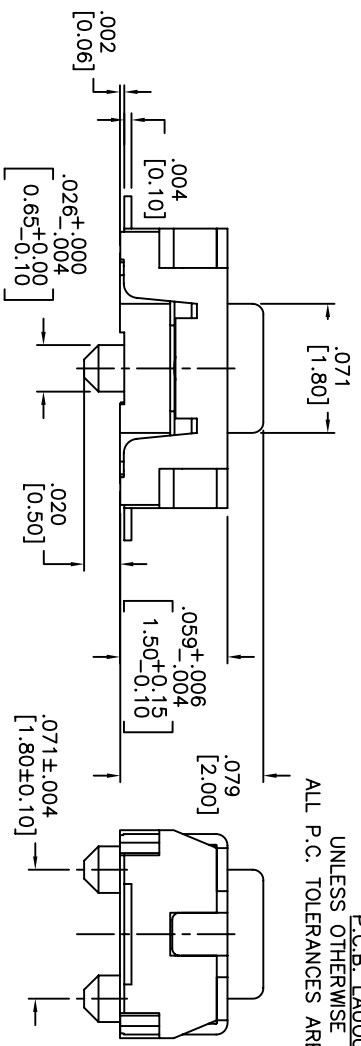
<b>Q.A. INSPECT:</b> 		<b>DESIGNER'S CRITICAL DIMENSION</b>		<b>PERN. CJD</b>	
<b>TOLERANCES (UNLESS OTHERWISE SPECIFIED)</b> .XX± = ±0.05 .XXX± = ±0.008 (0.20) .XXXX± = ±0.0008 (0.02) ANGLE = 30.5°				<b>63 Nork Rd. 01855          Hudson, MA          Tel: 413-752-3534          Fax: 413-752-3534</b>	
<b>TITLE</b> VERTICAL PUSH TACT SWITCH		<b>SHEET</b> 1 OF 1		<b>SCALE</b> 15:1	
<b>DATE</b> 2/4/08		<b>DRAWING NO.</b> AMPTLGP2VTR		<b>REV</b> B	

THIS DOCUMENT IS THE PROPERTY OF APDM COMPONENTS AND SHALL NOT BE COPIED, REPRODUCED, DISCLOSED OR USED AS THE BASIS FOR MANUFACTURING OR SALE WITHOUT PERMISSION OF A DULY AUTHORIZED REPRESENTATIVE OF APDM COMPONENTS INC.

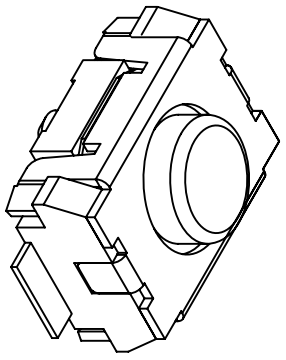


HATCHED AREA SHOWS SOLDERING LAND

P.C.B. LAYOUT  
UNLESS OTHERWISE SPECIFIED  
ALL P.C. TOLERANCES ARE ±.002 [0.50]



CIRCUIT



DATE	SYM	REVISION RECORD	DWN.	CK.
5/08	B	ECO# 778	CD	PD

DESCRIPTION: VERTICAL PUSH MECHANICAL CONTACT SWITCH.

SPECIFICATIONS:

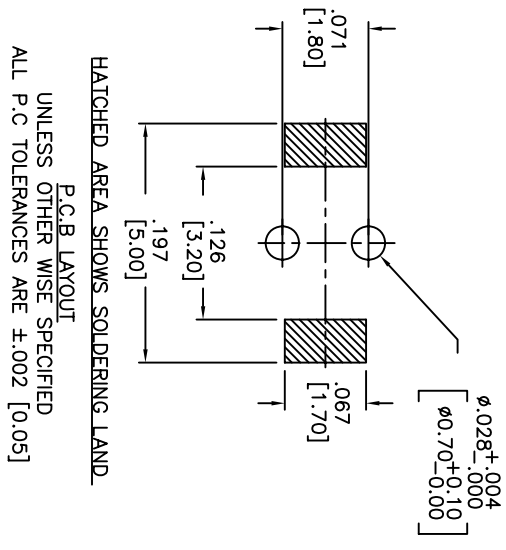
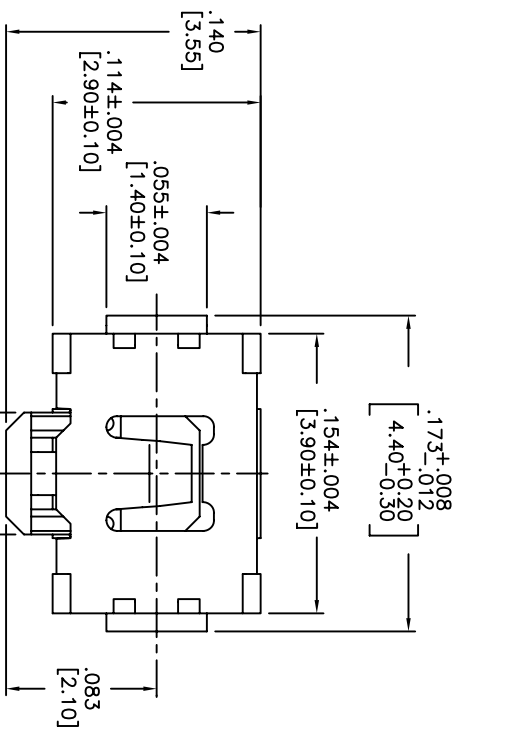
OPERATION FORCE: 160± 50gf  
 OPERATION TEMP.: -25°C TO +70°C.  
 STORAGE TEMP.: -30°C TO +80°C.  
 ELECTRICAL LIFE: 200,000 CYCLES.  
 RATING: 50ma, 12VDC.  
 VIBRATION RESISTANCE: PASSES METHOD 201A  
 MIL-STD-202F  
 SHOCK RESISTANCE: 50G PER METHOD 213B  
 MIL-STD-202F  
 CONTACT RESISTANCE: 100mΩ MAX.  
 INSULATION RESISTANCE: 100MΩ MIN. AT 100VDC.  
 DIELECTRIC STRENGTH: 100VAC/1 MINUTE.  
 CONTACT ARRANGEMENT: 1 POLE 1 THROW.  
 TRAVEL: .005 +.002 [0.13 +0.05]

MATERIALS:

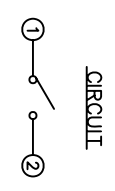
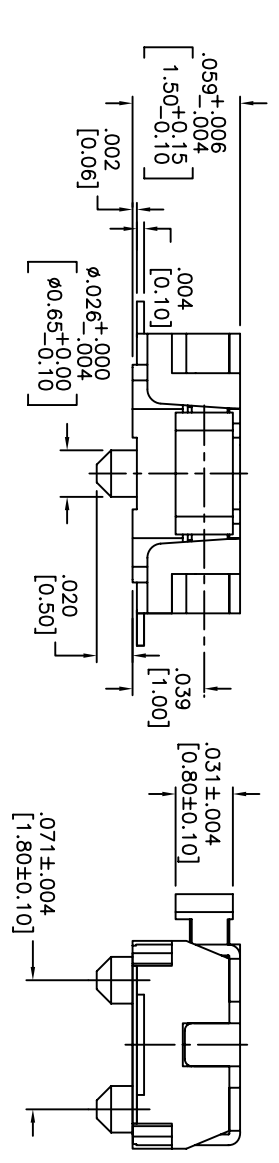
COVER: STAINLESS STEEL  
 BASE: LCP HIGH-TEMP. THERMOPLASTIC.  
 COLOR, WHITE.  
 STEM: LCP HIGH-TEMP. THERMOPLASTIC.  
 COLOR, BLACK.  
 CONTACT DISK: STAINLESS STEEL WITH SILVER CLADDING  
 TERMINAL: BRASS WITH SILVER PLATING  
 TAPE: TEFLON.  
 TAPE & REEL PACKAGING: 2,000 PER REEL  
 SOLDERING:  
 HAND SOLDERING: 30 WATT IRON AT 320°C FOR 2 SECONDS  
 IR REFLOW: 240°C MAX  
 ROHS COMPLIANT

Q.A. INSPECT:	DESIGNER'S INITIAL:	APDM	63 Neck Rd. Haverhill, MA 01830 Phone: 978-372-5554 Fax: 978-372-5554	DRN. CJD
TOLERANCES (UNLESS OTHERWISE SPECIFIED)	INCH (MM)	SHEET 1 OF 1	SIZE B	SCALE 15:1
.XX±.XX [0.5]				
.XXX±.XXX [0.20]				
.XXXX±.XXXX [0.02]				
ANGLE = 30.5°				
DO NOT SCALE	DATE: 6/30/05	DRAWING NO. AMPTCFGP2VTR		REV. B

THIS DOCUMENT IS THE PROPERTY OF APEM COMPONENTS AND SHALL NOT BE COPIED, REPRODUCED, DISCLOSED OR SALE WITHOUT PERMISSION OF A DULY AUTHORIZED REPRESENTATIVE OF APEM COMPONENTS INC.



HATCHED AREA SHOWS SOLDERING LAND  
 P.C.B. LAYOUT  
 UNLESS OTHER WISE SPECIFIED  
 ALL P.C. TOLERANCES ARE ±.002 [0.05]



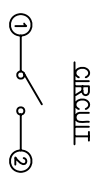
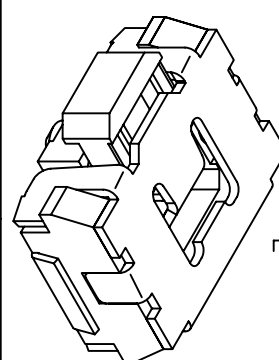
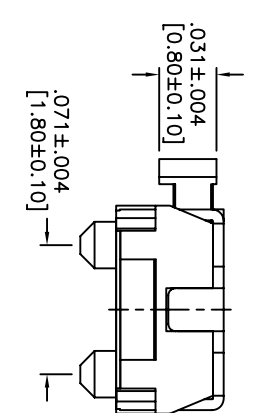
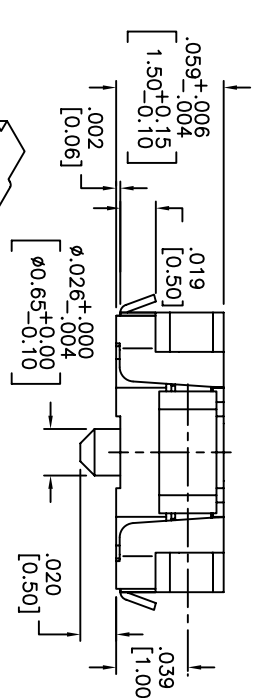
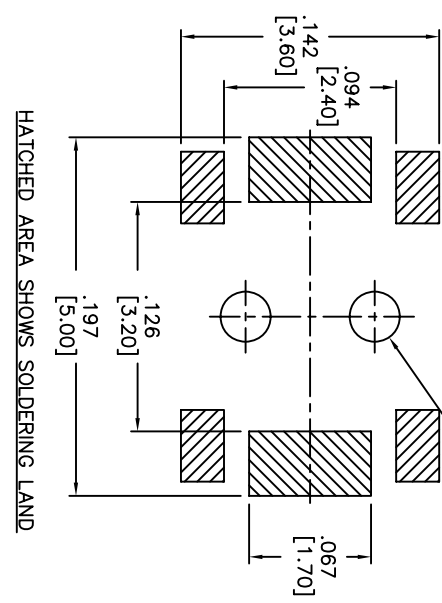
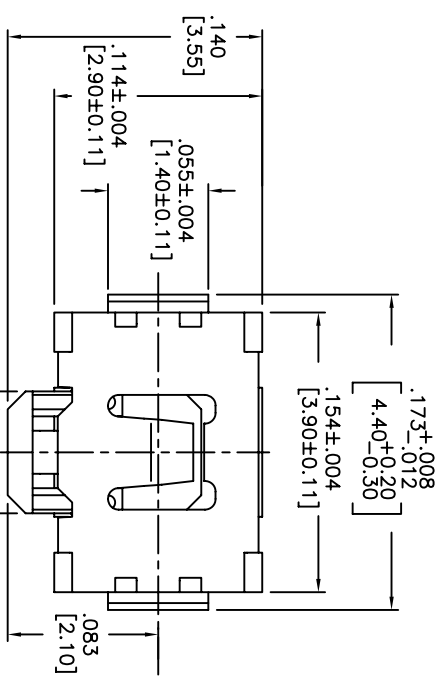
DESCRIPTION: SIDE PUSH MECHANICAL CONTACT SWITCH.  
 SPECIFICATIONS:  
 OPERATION FORCE: 220± 65gf  
 STROKE: 0.2+0.10mm  
 OPERATION TEMP.: -25°C TO +70°C.  
 STORAGE TEMP.: -30°C TO +80°C.  
 ELECTRICAL LIFE: 100,000 CYCLES.  
 RATING: 50mA, 12VDC.  
 CONTACT RESISTANCE: 100mΩ MAX.  
 INSULATION RESISTANCE: 100MΩ MIN. AT 100VDC.  
 DIELECTRIC STRENGTH: 100VAC/1 MINUTE.  
 CONTACT ARRANGEMENT: 1 POLE 1 THROW.  
 VIBRATION TEST: PASSED METHOD 201A  
 MIL-STD-202F.  
 SHOCK TEST: 50G PER METHOD 213B CONDITION A OF MIL-STD-202F  
 MATERIALS:  
 COVER: STAINLESS STEEL  
 BASE: LCP HIGH-TEMP. THERMOPLASTIC.  
 COLOR: WHITE.  
 STEM: LCP HIGH-TEMP. THERMOPLASTIC.  
 COLOR: BLACK.  
 CONTACT DISK: STAINLESS STEEL  
 WITH SILVER CLADDING  
 TERMINAL: BRASS WITH SILVER PLATING  
 PACKAGING: TAPE AND REEL  
 (3,500 PEICES PER REEL)  
 ROHS COMPLIANT  
 LEAD FREE SOLDERING COMPATIBLE  
 HAND SOLDERING: 320°C MAX WITH 30 WATT IRON  
 FOR 2 SECONDS  
 IR REFLOW: 260°C MAX

DATE	SYM	REVISION RECORD	DWN.	CK.
5/08	B	ECO# 778	CD	PD

<b>Q.A. INSPECT:</b> 		<b>DESIGNER'S INITIAL:</b> DIMENSION		<b>DRN. CJD</b>	
<b>TOLERANCES (UNLESS OTHERWISE SPECIFIED)</b> .XX±.XX [0.5] .XXX±.XXX [0.20] .XXXX±.XXXX [0.02] ANGLE = 30.5°		 <b>APEM</b> CORPORATION 63 Neck Rd. Hawthorne, NJ 07035 Phone: 973-772-5554 Fax: 973-772-5554		<b>BR. PJD</b> <b>OR. PJD</b>	
<b>TITLE</b> TACT SWITCH		<b>SHEET</b> 1 OF 1		<b>SCALE</b> 15:1	
<b>DATE</b> 5/2/06		<b>DRAWING NO.</b> AMPTCFVTR		<b>REV</b> B	

THIS DOCUMENT IS THE PROPERTY OF APEN COMPONENTS AND SHALL NOT BE COPIED, REPRODUCED, DISCLOSED OR USED AS THE BASIS FOR MANUFACTURING OR SALE WITHOUT PERMISSION OF A DULY AUTHORIZED REPRESENTATIVE OF APEN COMPONENTS INC.

DATE	SYM	REVISION RECORD	DWN.	CK.
1/06	B	ECO# 526	CD	PD
5/08	C	ECO# 778	CD	PD



DESCRIPTION: SIDE PUSH MECHANICAL CONTACT SWITCH, WITH BENDING AND GROUNDING TERMINALS.

**SPECIFICATIONS:**

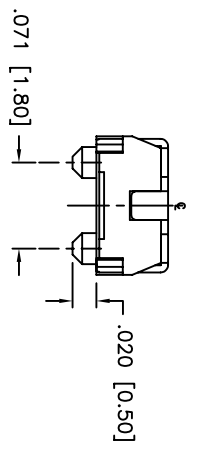
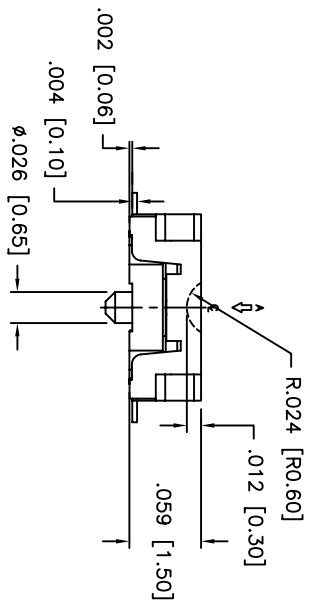
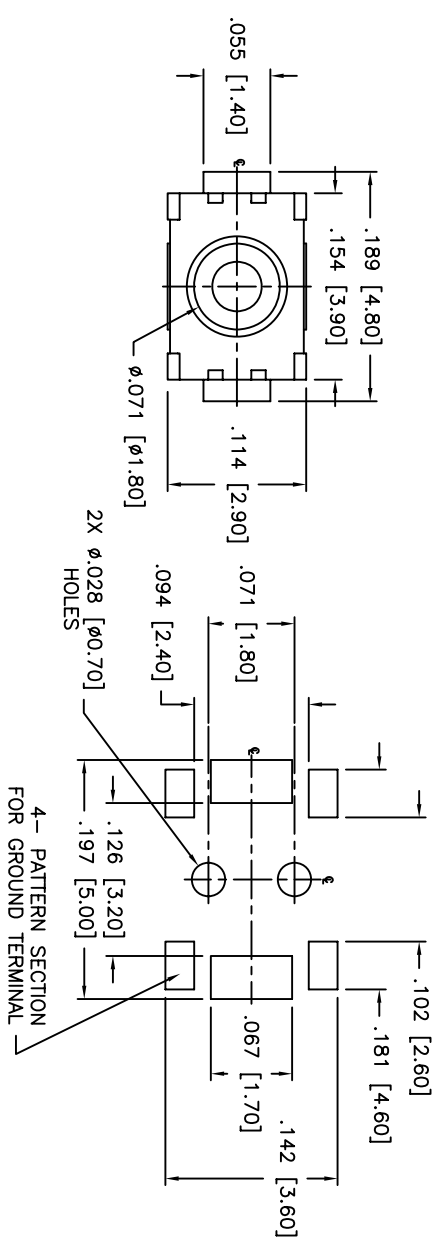
- OPERATION FORCE: 220± 65gf
- OPERATION TEMP.: -25°C TO +70°C.
- STORAGE TEMP.: -30°C TO +80°C.
- ELECTRICAL LIFE: 100,000 CYCLES.
- RATING: 50mA, 12VDC.
- VIBRATION RESISTANCE: PASSES METHOD 201A MIL-STD-202F
- SHOCK RESISTANCE: 50G PER METHOD 213B MIL-STD-202F
- CONTACT RESISTANCE: 100MΩ MAX.
- INSULATION RESISTANCE: 100MΩ MIN. AT 100VDC.
- DIELECTRIC STRENGTH: 100VAC/1 MINUTE.
- CONTACT ARRANGEMENT: 1 POLE 1 THROW.
- STROKE: .008 ±.002 [0.2 ±0.05]

**MATERIALS:**

- COVER: STAINLESS STEEL
- BASE: LCP HIGH-TEMP. THERMOPLASTIC.
- COLOR: WHITE.
- STEM:LCP HIGH-TEMP. THERMOPLASTIC.
- COLOR: BLACK.
- CONTACT DISK: STAINLESS STEEL WITH SILVER CLADDING
- TERMINAL: BRASS WITH SILVER PLATING
- TAPE: TEFLON.
- TAPE & REEL PACKAGING, 3500 PER REEL
- HAND SOLDERING: 30 WATT IRON AT 320°C FOR 2 SECONDS
- IR REFLOW: 240°C MAX
- ROHS COMPLIANT

DESIGNER'S OPTION		DIMENSION		TOLERANCES (UNLESS OTHERWISE SPECIFIED)		ANGLE = 40.5°	
APEN	63 Neck Rd. Haverhill, MA 01830	1	OF 1	B	15:1	THIRD ANGLE PROJECTION	REV C
DESIGNER'S OPTION		DIMENSION		TOLERANCES (UNLESS OTHERWISE SPECIFIED)		ANGLE = 40.5°	
APEN		1 OF 1		B		THIRD ANGLE PROJECTION	
DATE: 06/30/05		DRAWING NO. AMPPTCLGVTR		REV: C			

THIS DOCUMENT IS THE PROPERTY OF APDM COMPONENTS AND SHALL NOT BE COPIED, REPRODUCED, DISCLOSED OR USED AS THE BASIS FOR MANUFACTURING OR SALE WITHOUT PERMISSION OF A DULY AUTHORIZED REPRESENTATIVE OF APDM COMPONENTS INC.



UNLESS OTHERWISE SPECIFIED  
P.C. TOLERANCES ARE ±.002 [0.05]

P.C. LAYOUT

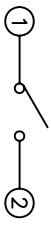
**MATERIALS:**  
 BASE: LCP HIGH-TEMP THERMOPLASTIC UL94V-0  
 ACTUATOR: LCP HIGH-TEMP THERMOPLASTIC UL94V-0  
 COVER: STAINLESS STEEL  
 TERMINALS: SILVER PLATED BRASS  
 SHORTING CONTACT: STAINLESS STEEL WITH SILVER CLADDING  
 TAPE: TEFLON  
 ROHS COMPLIANT

**NOTE:**  
 1. AFTER SOLDERING, RETURN SWITCHES TO NORMAL TEMPERATURE BEFORE WASHING.

**DESCRIPTION:** SPST, NORMALLY OPEN, MOMENTARY, SURFACE MOUNT TACT SWITCH WITH LOCATING PINS

**SPECIFICATIONS:**  
 CONTACT RATING: 50mA @ 12VDC  
 INITIAL CONTACT RESISTANCE: 100MOHMS MAX.  
 INSULATION RESISTANCE: 100MOHMS MIN. @ 500VDC  
 DIELECTRIC STRENGTH: 100VAC FOR 1 MINUTE  
 ELECTRICAL LIFE: 200,000 CYCLES MIN.  
 OPERATING TEMPERATURE RANGE: -25°C to +70°C  
 STOP STRENGTH: MAX 3kgf VERTICAL STATIC LOAD  
 CONT. FOR 15 SEC.  
 ACTUATION FORCE: 160± 50gf  
 STORAGE TEMPERATURE RANGE: -30°C TO +80°C  
 SHOCK RESISTANCE: 50G PER METHOD 213B, MIL-STD-202F  
 VIBRATION RESISTANCE: PASSES METHOD 201A, MIL-STD-202F

**SOLDERING:**  
 IR REFLOW: 240°C MAX.  
 HAND SOLDERING: 350°C MAX. FOR 3 SECONDS MAX.  
 (30 WATT IRON MAX.)



SCHEMATIC

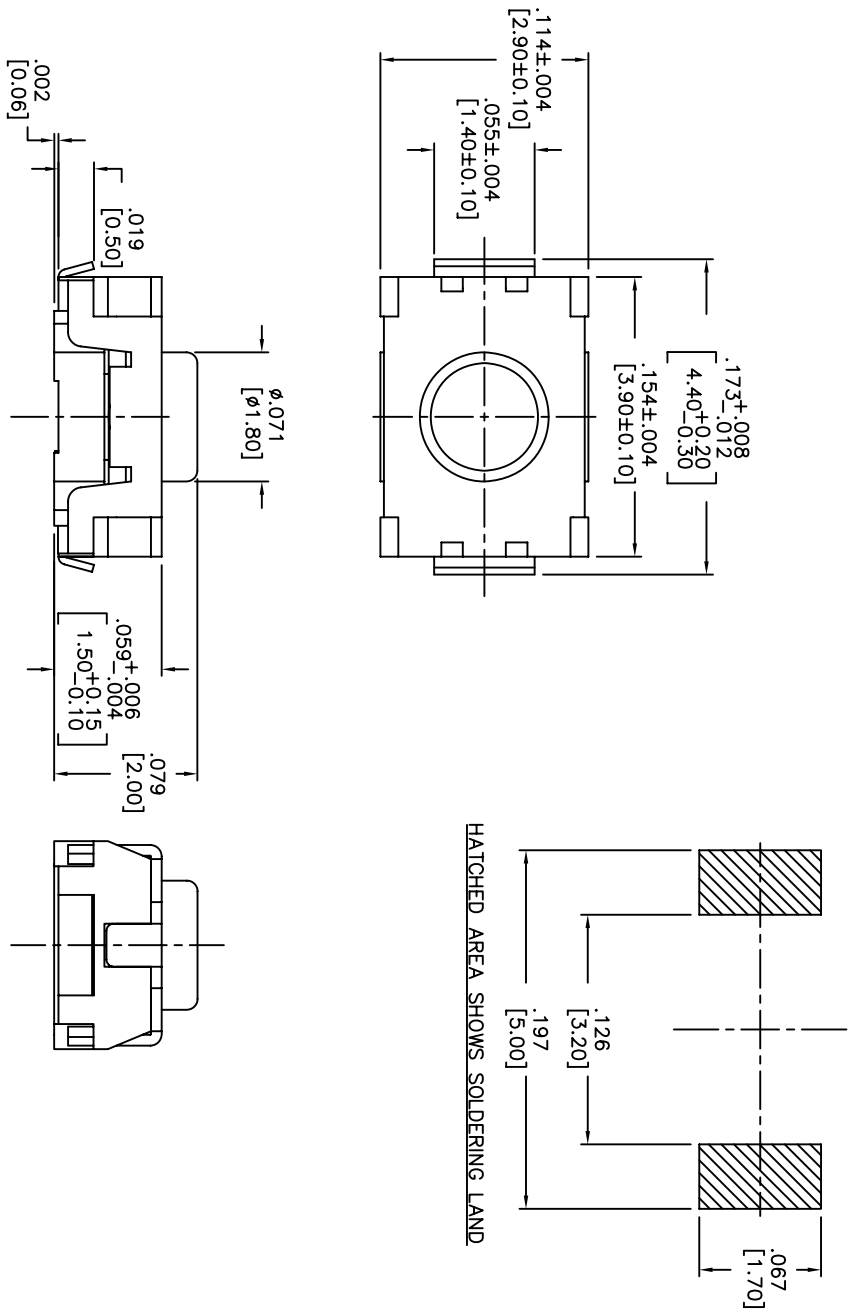
DATE	SYM	REVISION RECORD	DWN.	CK.
1/06	A	ECO # 526	CD	PD
5/08	B	ECO# 778	CD	PD

<b>Q.A. INSPECT:</b> 		<b>DESIGNER'S INITIAL:</b> DIMENSION		<b>DRN. CJD</b>	
<b>TOLERANCES</b> (UNLESS AS NOTED) .XX=±.02[0.5] .XXX=±.008[0.20] .XXXX=±.0008[0.02] ANGLE = 30.5°		<b>SHEET</b> 1 OF 1		<b>SIZE</b> B	
<b>TITLE</b> TACT SWITCH WITH LOCATING PINS		<b>SCALE</b> 10:1		<b>THIRD ANGLE PROJECTION</b> 	
<b>DATE</b> 07/20/05		<b>DRAWING NO.</b> AMPTCFGP1VTR		<b>REV</b> B	



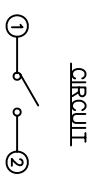
THIS DOCUMENT IS THE PROPERTY OF APDM COMPONENTS AND SHALL NOT BE COPIED, REPRODUCED, DISCLOSED OR USED AS THE BASIS FOR MANUFACTURING OR SALE WITHOUT PERMISSION OF A DULY AUTHORIZED REPRESENTATIVE OF APDM COMPONENTS INC.

P.C.B. LAYOUT



DATE	SYM	REVISION RECORD	DWN.	CK.
1/06	A	ECO# 526	CD	PD
5/08	B	ECO# 778	CD	PD

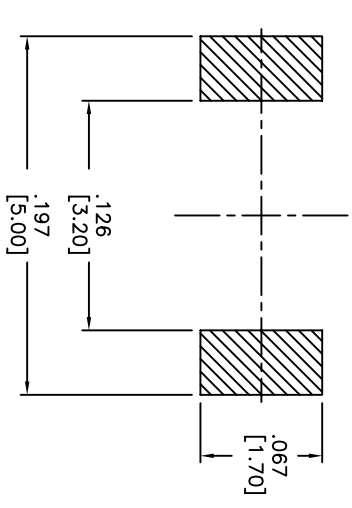
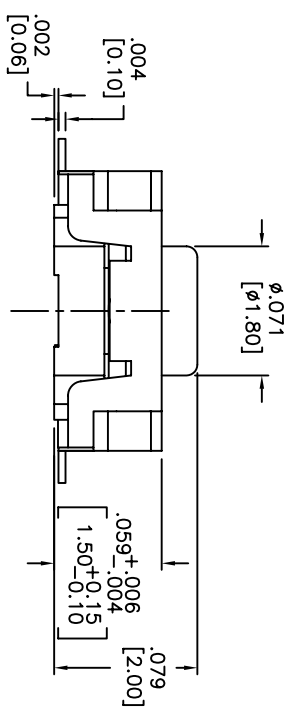
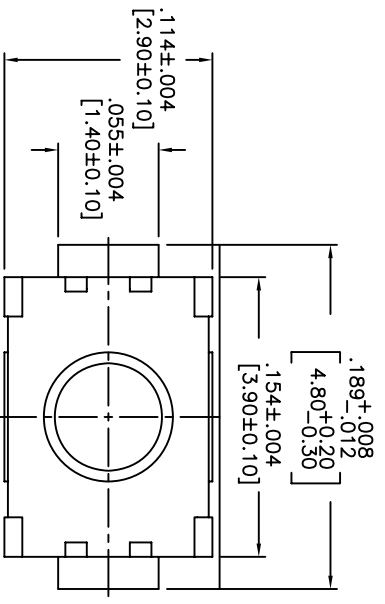
DESCRIPTION: VERTICAL PUSH MECHANICAL CONTACT SWITCH.  
 SPECIFICATIONS:  
 OPERATION FORCE: 220± 65gf  
 OPERATION TEMP.: -25°C TO +70°C.  
 STORAGE TEMP.: -30°C TO +80°C.  
 ELECTRICAL LIFE: 200,000 CYCLES.  
 RATING: 50mA, 12VDC.  
 VIBRATION RESISTANCE: PASSES METHOD 201A  
 MIL-STD-202F  
 SHOCK RESISTANCE: 50G PER METHOD 213B  
 MIL-STD-202F  
 CONTACT RESISTANCE: 100mΩ MAX.  
 INSULATION RESISTANCE: 100MΩ MIN. AT 100VDC.  
 DIELECTRIC STRENGTH: 100VAC/1 MINUTE.  
 CONTACT ARRANGEMENT: 1 POLE 1 THROW.  
 MATERIALS:  
 COVER: STAINLESS STEEL  
 BASE: LCP HIGH-TEMP. THERMOPLASTIC.  
 COLOR, WHITE.  
 STEM: LCP HIGH-TEMP. THERMOPLASTIC.  
 COLOR, BLACK.  
 CONTACT DISK: STAINLESS STEEL WITH SILVER CLADDING  
 TERMINAL: BRASS WITH SILVER PLATING  
 TAPE & REEL PACKAGING, 2,000 PER REEL  
 SOLDERING:  
 HAND SOLDERING: 30 WATT IRON AT 320°C FOR 2 SECONDS  
 IR REFLOW: 240°C MAX  
 ROHS COMPLIANT  
 LEAD FREE PROCESS COMPATIBLE



<b>Q.A. INSPECT:</b> DESIGNER'S INITIAL DIMENSION TOLERANCES (CHECK AS NOTED) .XX±.X(X) [0.15] .XXX±.X.000 [0.20] .XXXX±.X.000 [0.02] ANGLE = 30.5°		<b>APDM</b> 63 Neck Rd. Hendersonville, NC 27535 Phone: 704-372-3524 Fax: 704-372-3524		DRN. CJD BR. BR. OR. PJD
TITLE TACT SWITCH	SHEET 1 OF 1	SIZE B	SCALE 15:1	THIRD ANGLE PROJECTION
DO NOT SCALE DRAWING NO. AMPTLP2VTR	DATE 01/23/06	REV B		

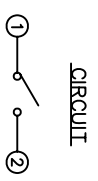
THIS DOCUMENT IS THE PROPERTY OF APDM COMPONENTS AND SHALL NOT BE COPIED, REPRODUCED, DISCLOSED OR SALE WITHOUT PERMISSION OF A DULY AUTHORIZED REPRESENTATIVE OF APDM COMPONENTS INC.

P.C.B. LAYOUT



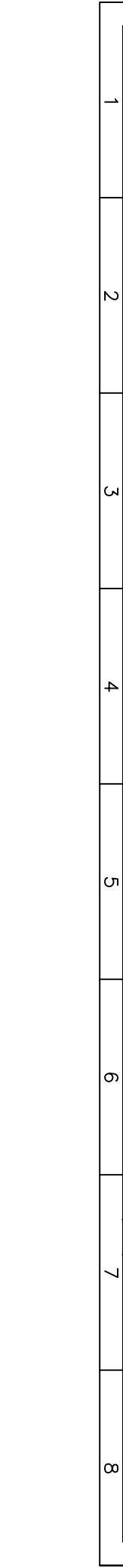
HATCHED AREA SHOWS SOLDERING LAND

DESCRIPTION: VERTICAL PUSH MECHANICAL CONTACT SWITCH.  
 SPECIFICATIONS:  
 OPERATION FORCE: 160± 50gf  
 OPERATION TEMP.: -25°C TO +70°C.  
 STORAGE TEMP.: -30°C TO +80°C.  
 ELECTRICAL LIFE: 200,000 CYCLES.  
 RATING: 50mA, 12VDC.  
 VIBRATION RESISTANCE: PASSES METHOD 201A  
 MIL-STD-202F  
 SHOCK RESISTANCE: 50G PER METHOD 213B  
 MIL-STD-202F  
 CONTACT RESISTANCE: 100mΩ MAX.  
 INSULATION RESISTANCE: 100MΩ MIN. AT 100VDC.  
 DIELECTRIC STRENGTH: 100VAC/1 MINUTE.  
 CONTACT ARRANGEMENT: 1 POLE 1 THROW.  
 MATERIALS:  
 COVER: STAINLESS STEEL  
 BASE: LCP HIGH-TEMP. THERMOPLASTIC.  
 COLOR, WHITE.  
 STEM: LCP HIGH-TEMP. THERMOPLASTIC.  
 COLOR, BLACK.  
 CONTACT DISK: STAINLESS STEEL  
 WITH SILVER CLADDING  
 TERMINAL: BRASS WITH SILVER PLATING  
 TAPE: TEFLON.  
 TAPE & REEL PACKAGING, 2,000 PER REEL  
 SOLDERING:  
 HAND SOLDERING: 30 WATT IRON AT 320°C FOR 2 SECONDS  
 IR REFLOW: 260°C MAX  
 RoHS COMPLIANT  
 LEAD FREE PROCESS COMPATIBLE



DATE	SYM	REVISION RECORD	DWN.	CK.
5/08	B	ECO# 778	CD	PD

Q.A. INSPECT:		DESIGNATES CRITICAL DIMENSION		TOLERANCES (UNLESS OTHERWISE SPECIFIED)		ANGLE = 40.5°	
APDM		63 Neck Rd. 01835		1 OF 1		SCALE 15:1	
TITLE		TACT SWITCH		SHEET		DRAWING NO. AMPTFP2VTR	
DATE		01/23/06		REV		B	



Компания «Океан Электроники» предлагает заключение долгосрочных отношений при поставках импортных электронных компонентов на взаимовыгодных условиях!

Наши преимущества:

- Поставка оригинальных импортных электронных компонентов напрямую с производств Америки, Европы и Азии, а так же с крупнейших складов мира;
- Широкая линейка поставок активных и пассивных импортных электронных компонентов (более 30 млн. наименований);
- Поставка сложных, дефицитных, либо снятых с производства позиций;
- Оперативные сроки поставки под заказ (от 5 рабочих дней);
- Экспресс доставка в любую точку России;
- Помощь Конструкторского Отдела и консультации квалифицированных инженеров;
- Техническая поддержка проекта, помощь в подборе аналогов, поставка прототипов;
- Поставка электронных компонентов под контролем ВП;
- Система менеджмента качества сертифицирована по Международному стандарту ISO 9001;
- При необходимости вся продукция военного и аэрокосмического назначения проходит испытания и сертификацию в лаборатории (по согласованию с заказчиком);
- Поставка специализированных компонентов военного и аэрокосмического уровня качества (Xilinx, Altera, Analog Devices, Intersil, Interpoint, Microsemi, Actel, Aeroflex, Peregrine, VPT, Syfer, Eurofarad, Texas Instruments, MS Kennedy, Miteq, Cobham, E2V, MA-COM, Hittite, Mini-Circuits, General Dynamics и др.);

Компания «Океан Электроники» является официальным дистрибьютором и эксклюзивным представителем в России одного из крупнейших производителей разъемов военного и аэрокосмического назначения «JONHON», а так же официальным дистрибьютором и эксклюзивным представителем в России производителя высокотехнологичных и надежных решений для передачи СВЧ сигналов «FORSTAR».



## JONHON

«JONHON» (основан в 1970 г.)

Разъемы специального, военного и аэрокосмического назначения:

(Применяются в военной, авиационной, аэрокосмической, морской, железнодорожной, горно- и нефтедобывающей отраслях промышленности)

«FORSTAR» (основан в 1998 г.)

ВЧ соединители, коаксиальные кабели, кабельные сборки и микроволновые компоненты:

(Применяются в телекоммуникациях гражданского и специального назначения, в средствах связи, РЛС, а так же военной, авиационной и аэрокосмической отраслях промышленности).



Телефон: 8 (812) 309-75-97 (многоканальный)

Факс: 8 (812) 320-03-32

Электронная почта: [ocean@oceanchips.ru](mailto:ocean@oceanchips.ru)

Web: <http://oceanchips.ru/>

Адрес: 198099, г. Санкт-Петербург, ул. Калинина, д. 2, корп. 4, лит. А