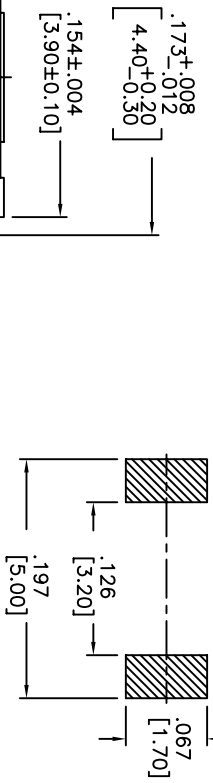
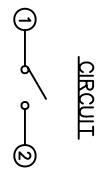
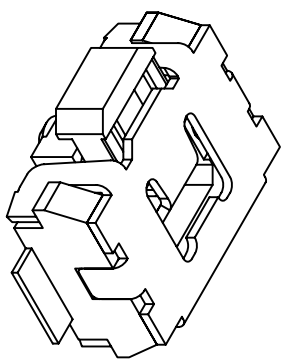
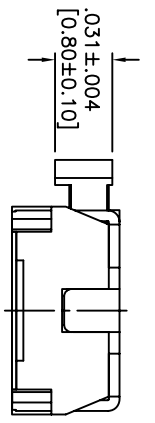
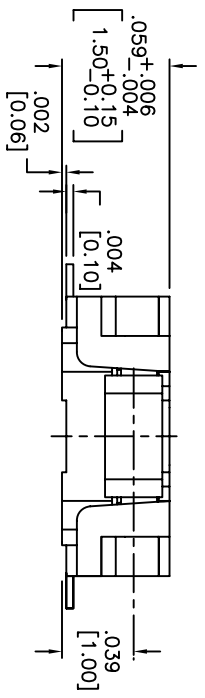
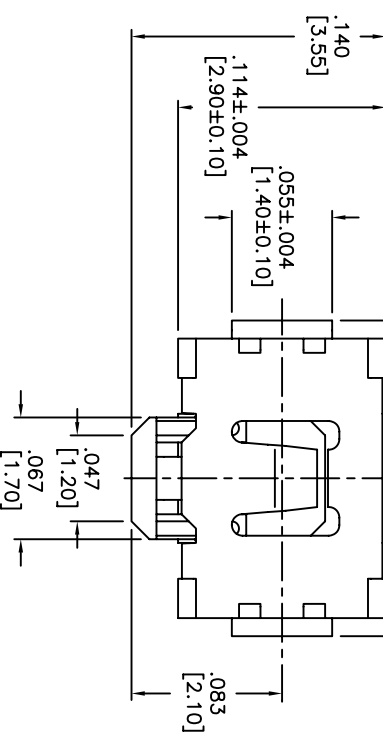


THIS DOCUMENT IS THE PROPERTY OF APDM COMPONENTS AND SHALL NOT BE COPIED, REPRODUCED, DISCLOSED OR USED AS THE BASIS FOR MANUFACTURING OR SALE WITHOUT PERMISSION OF A DULY AUTHORIZED REPRESENTATIVE OF APDM COMPONENTS INC.



HATCHED AREA SHOWS SOLDERING LAND
P.C.B. LAYOUT
UNLESS OTHERWISE SPECIFIED
ALL P.C. TOLERANCES ARE ±.002 [0.05]



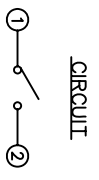
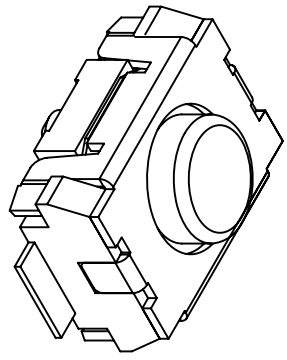
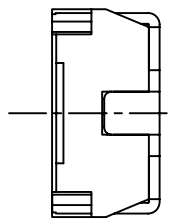
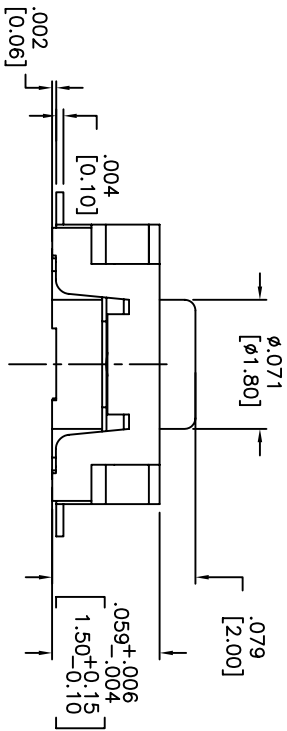
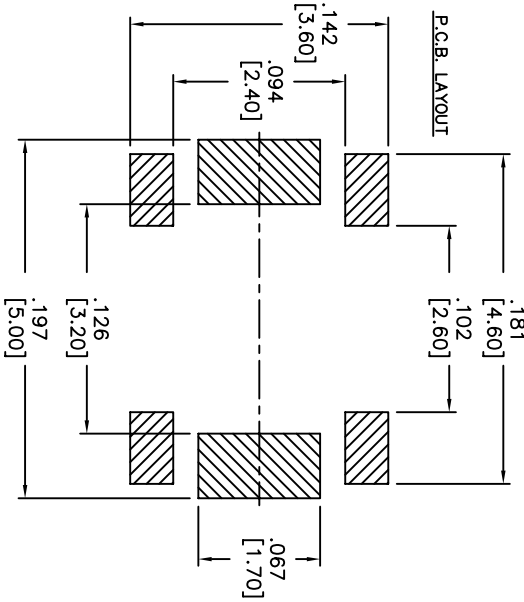
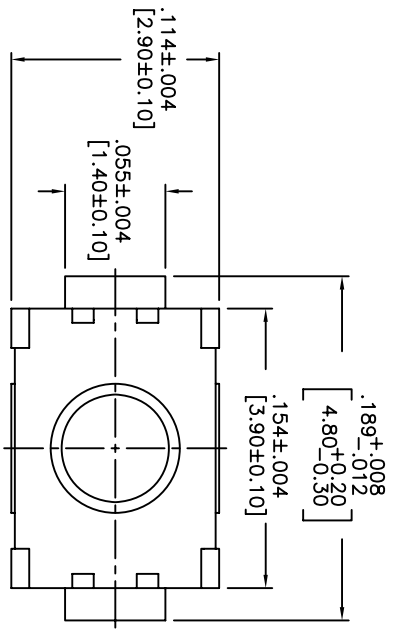
DATE	SYM	REVISION RECORD	DWN.	CK.
5/08	A	ECO# 778	CD	PD

DESCRIPTION: SIDE PUSH MECHANICAL CONTACT SWITCH.
SPECIFICATIONS:
OPERATION FORCE: 220± 65gf
STROKE: 0.2±0.08mm
OPERATION TEMP.: -25°C TO +70°C.
STORAGE TEMP.: -30°C TO +80°C.
ELECTRICAL LIFE: 100,000 CYCLES.
RATING: 50mA, 12VDC.
CONTACT RESISTANCE: 100mΩ MAX.
INSULATION RESISTANCE: 100MΩ MIN. AT 100VDC.
DIELECTRIC STRENGTH: 100VAC/1 MINUTE.
CONTACT ARRANGEMENT: 1 POLE 1 THROW.
VIBRATION TEST: PASSED METHOD 201A
MIL-STD-202F.
SHOCK TEST: 50G PER METHOD 213B CONDITION A OF MIL-STD-202F
MATERIALS:
COVER: STAINLESS STEEL
BASE: LCP HIGH-TEMP. THERMOPLASTIC.
COLOR, WHITE.
STEM: LCP HIGH-TEMP. THERMOPLASTIC.
COLOR, BLACK.
CONTACT DISK: STAINLESS STEEL WITH SILVER CLADDING
TERMINAL: BRASS WITH SILVER PLATING
PACKAGING: TAPE AND REEL (3,500 PIECES PER REEL)
ROHS COMPLIANT
LEAD FREE SOLDERING COMPATIBLE
HAND SOLDERING: 320°c MAX WITH 30 WATT IRON FOR 2 SECONDS
IR REFLOW: 260°C MAX

CUSTOMER PART NO.: 263262

<p>9A. INSPECT: DESIGNS: CRITICAL DIMENSION</p>		<p>APDM 63 Neck Rd. 01835 Haverhill, MA Tel: 978-372-3534 Fax: 978-372-3534</p>		<p>PRN. CJD BR. PJD</p>	
<p>TOLERANCES (UNLESS OTHERWISE SPECIFIED) .XX±.XX [0.05] .XXX±.XXX [0.20] .XXXX±.XXXX [0.02] ANGLE = 30.5°</p>		<p>TITLE TACT SWITCH</p>		<p>THIRD ANGLE PROJECTION</p>	
<p>DO NOT SCALE</p>		<p>DATE 7/31/06</p>		<p>DRAWING NO. AMPFTVTR</p>	
<p>1 OF 1</p>		<p>SHEET B</p>		<p>SCALE 15:1</p>	
<p>REV A</p>					

THIS DOCUMENT IS THE PROPERTY OF APEN COMPONENTS AND SHALL NOT BE COPIED, REPRODUCED, DISCLOSED OR USED AS THE BASIS FOR MANUFACTURING OR SALE WITHOUT PERMISSION OF A DULY AUTHORIZED REPRESENTATIVE OF APEN COMPONENTS INC.



DATE	SYM	REVISION RECORD	DWN.	CK.
5/08	B	ECO# 778	CD	PD

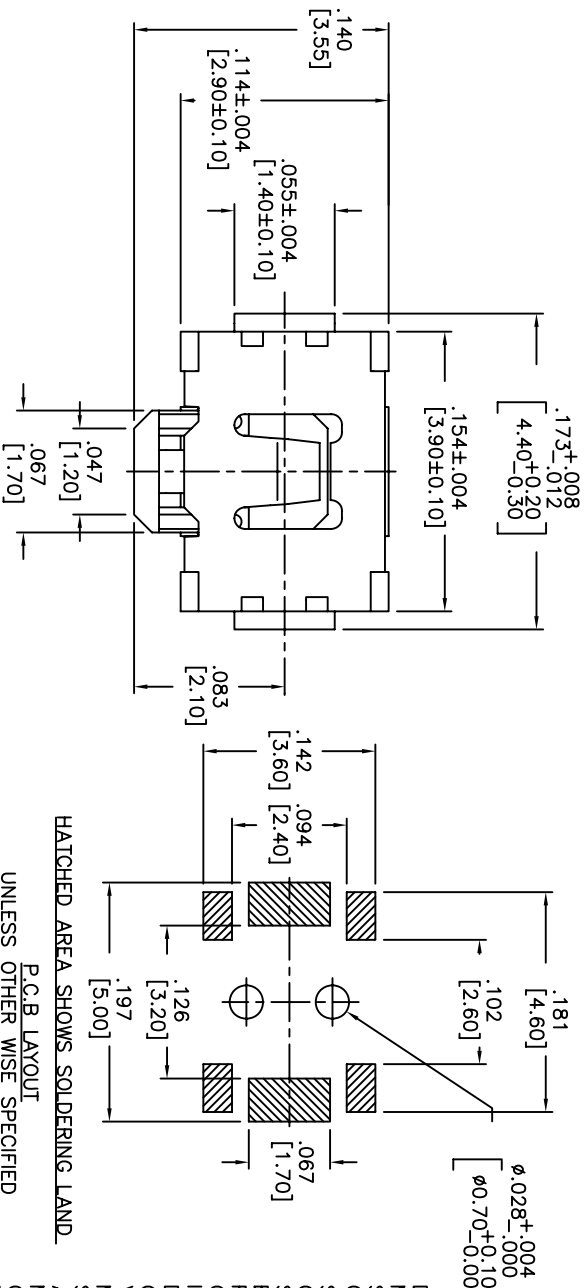
DESCRIPTION: VERTICAL PUSH MECHANICAL CONTACT SWITCH.
 SPECIFICATIONS:
 OPERATION FORCE: 160±50gf
 OPERATION TEMP.: -25°C TO +70°C.
 STORAGE TEMP.: -30°C TO +80°C.
 ELECTRICAL LIFE: 100,000 CYCLES.
 RATING: 50ma, 12VDC.
 VIBRATION RESISTANCE: PASSES METHOD 201A MIL-STD-202F
 MIL-STD-202F SHOCK RESISTANCE: 50G PER METHOD 213B MIL-STD-202F
 CONTACT RESISTANCE: 100mΩ MAX.
 INSULATION RESISTANCE: 100MΩ MIN. AT 100VDC.
 DIELECTRIC STRENGTH: 100VAC/1 MINUTE.
 CONTACT ARRANGEMENT: 1 POLE 1 THROW.
 MATERIALS:
 COVER: STAINLESS STEEL
 BASE: LCP HIGH-TEMP. THERMOPLASTIC.
 COLOR, WHITE.
 STEM: LCP HIGH-TEMP. THERMOPLASTIC.
 COLOR, BLACK
 CONTACT DISK: STAINLESS STEEL WITH SILVER CLADDING
 TERMINAL: BRASS WITH SILVER PLATING
 TAPE: TEFLON.
 TAPE & REEL PACKAGING, 2,000 PER REEL
 SOLDERING:
 HAND SOLDERING: 30 WATT IRON AT 320°C FOR 2 SECONDS
 IR REFLOW: 240°C MAX
 ROHS COMPLIANT

DESIGNER'S INITIAL	63 Neck Rd. Haverhill, MA 01830 Tel: 978-372-5554 Fax: 978-372-5554	DRN. CJD
DESIGNER'S DIMENSION		BR. PJD
TOLERANCES (unless as noted)		THIRD ANGLE PROJECTION
.XX±.XX(X)		
.XXX±.XXX(X.X)		
.XXXX±.XXXX(X.XXX)		
ANGLE = 30.5°		
DO NOT SCALE		
DATE: 2/4/08	DRAWING NO. AMPPTFGP2VTR	REV. B
TITLE: VERTICAL PUSH TACT SWITCH		

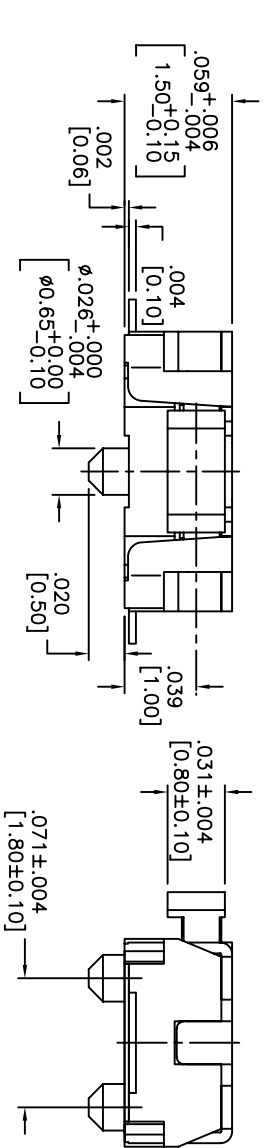
1 2 3 4 5 6 7 8

THIS DOCUMENT IS THE PROPERTY OF APEN COMPONENTS AND SHALL NOT BE COPIED, REPRODUCED, DISCLOSED OR USED AS THE BASIS FOR MANUFACTURING OR SALE WITHOUT PERMISSION OF A DULY AUTHORIZED REPRESENTATIVE OF APEN COMPONENTS INC.

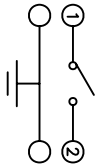
DATE	SYM	REVISION RECORD	DWNL	CK
01/06	A	ECO # 526	CD	PD
5/08	B	ECO# 778	CD	PD



HATCHED AREA SHOWS SOLDERING LAND
P.C.B. LAYOUT
UNLESS OTHER WISE SPECIFIED
ALL P.C. TOLERANCES ARE ±.002 [0.05]



CIRCUIT

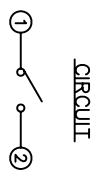
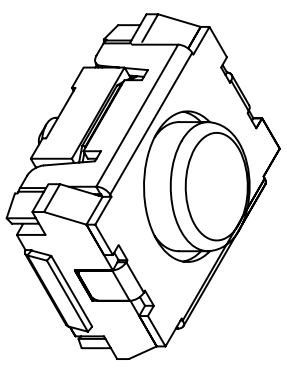
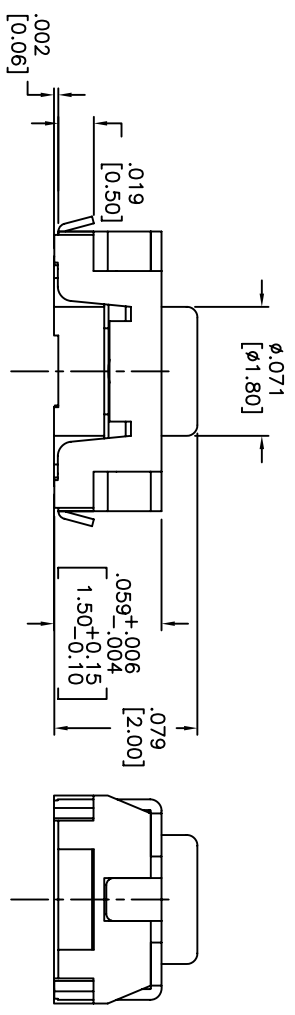
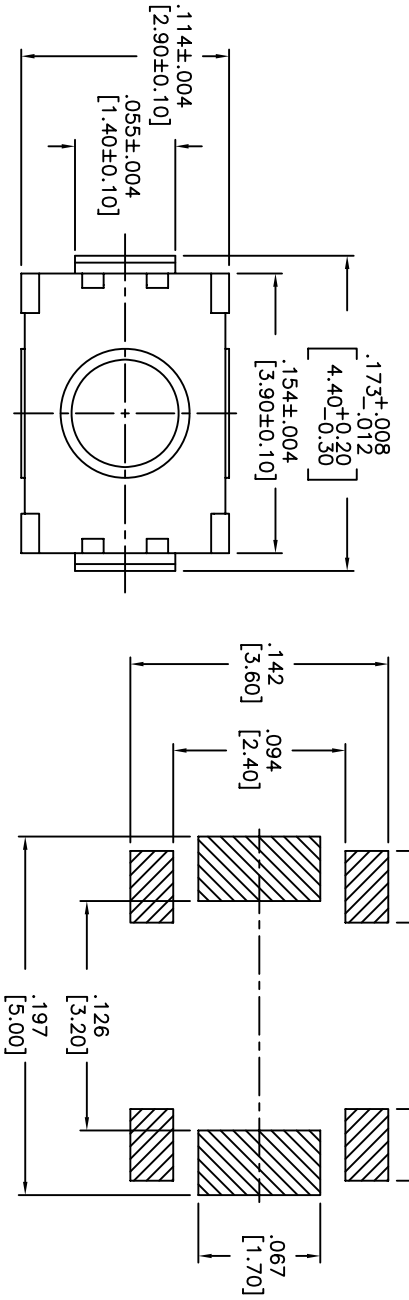


DESCRIPTION: SIDE PUSH MECHANICAL CONTACT SWITCH.
SPECIFICATIONS:
OPERATION FORCE: 220± 65gf
STROKE: 0.2±0.09mm
OPERATION TEMP.: -25°C TO +70°C.
STORAGE TEMP.: -30° TO +80°.
ELECTRICAL LIFE: 100,000 CYCLES.
RATING: 50mA, 12VDC.
CONTACT RESISTANCE: 100mΩ MAX.
INSULATION RESISTANCE: 100MΩ MIN. AT 100VDC.
DIELECTRIC STRENGTH: 100VAC/1 MINUTE.
CONTACT ARRANGEMENT: 1 POLE 1 THROW.
VIBRATION TEST: PASSED METHOD 201A MIL-STD-202F.
SHOCK TEST: 50G PER METHOD 213B CONDITION A OF MIL-STD-202F
MATERIALS:
COVER: STAINLESS STEEL
BASE: LCP HIGH-TEMP. THERMOPLASTIC.
COLOR: WHITE.
STEM: LCP HIGH-TEMP. THERMOPLASTIC.
COLOR: BLACK.
CONTACT DISK: STAINLESS STEEL WITH SILVER CLADDING
TERMINAL: BRASS WITH SILVER PLATING
PACKAGING: TAPE AND REEL (3,500 PEICES PER REEL)
ROHS COMPLIANT
HAND SOLDERING: 320°C MAX WITH 30 WATT IRON FOR 2 SECONDS
IR REFLOW: 240°C MAX

DESIGNER'S INITIAL	DATE	DO NOT SCALE
TOLERANCES (UNLESS OTHERWISE SPECIFIED)	DATE	06/30/05
.XX±.XX(X)	SHEET	1 OF 1
.XXX±.XXX(X)	SIZE	B
.XXXX±.XXXX(X)	SCALE	15:1
ANGLE = 30.5°	TITLE	TACT SWITCH
	DRAWING NO.	AMPPTCFGVTR
	REV	B

1 2 3 4 5 6 7 8

THIS DOCUMENT IS THE PROPERTY OF APDM COMPONENTS AND SHALL NOT BE COPIED, REPRODUCED, DISCLOSED OR SALE WITHOUT PERMISSION OF A DULY AUTHORIZED REPRESENTATIVE OF APDM COMPONENTS INC.

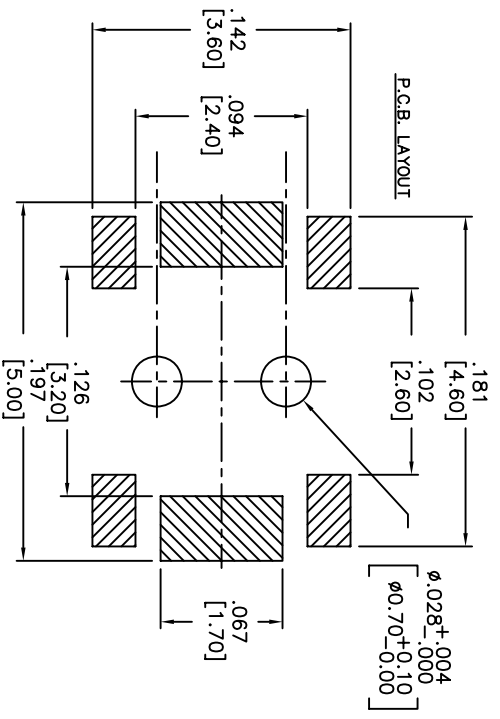
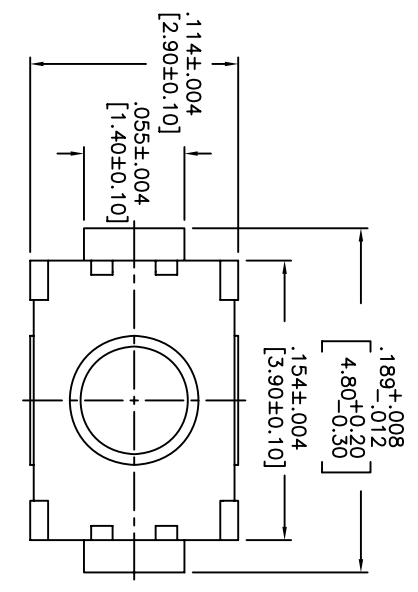


DATE	SYM	REVISION RECORD	DWNL	CK
5/08	B	ECO# 778	CD	PD

DESCRIPTION: VERTICAL PUSH MECHANICAL CONTACT SWITCH.
 SPECIFICATIONS:
 OPERATION FORCE: 160± 50gf
 OPERATION TEMP.: -25°C TO +70°C.
 STORAGE TEMP.: -30°C TO +80°C.
 ELECTRICAL LIFE: 100,000 CYCLES.
 RATING: 50mA, 12VDC.
 VIBRATION RESISTANCE: PASSES METHOD 201A MIL-STD-202F
 SHOCK RESISTANCE: 50G PER METHOD 213B MIL-STD-202F
 CONTACT RESISTANCE: 100mΩ MAX.
 INSULATION RESISTANCE: 100MΩ MIN. AT 100VDC.
 DIELECTRIC STRENGTH: 100VAC/1 MINUTE.
 CONTACT ARRANGEMENT: 1 POLE 1 THROW.
 MATERIALS:
 COVER: STAINLESS STEEL
 BASE: LCP HIGH-TEMP. THERMOPLASTIC.
 COLOR, WHITE.
 STEM: LCP HIGH-TEMP. THERMOPLASTIC.
 COLOR, BLACK.
 CONTACT DISK: STAINLESS STEEL
 WITH SILVER CLADDING
 TERMINAL: BRASS WITH SILVER PLATING
 TAPE: TEFLON.
 TAPE & REEL PACKAGING, 2,000 PER REEL
 SOLDERING:
 HAND SOLDERING: 30 WATT IRON AT 320°C FOR 2 SECONDS
 IR REFLOW: 240°C MAX
 ROHS COMPLIANT

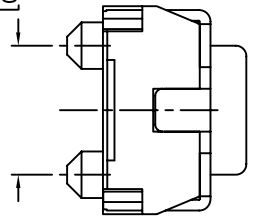
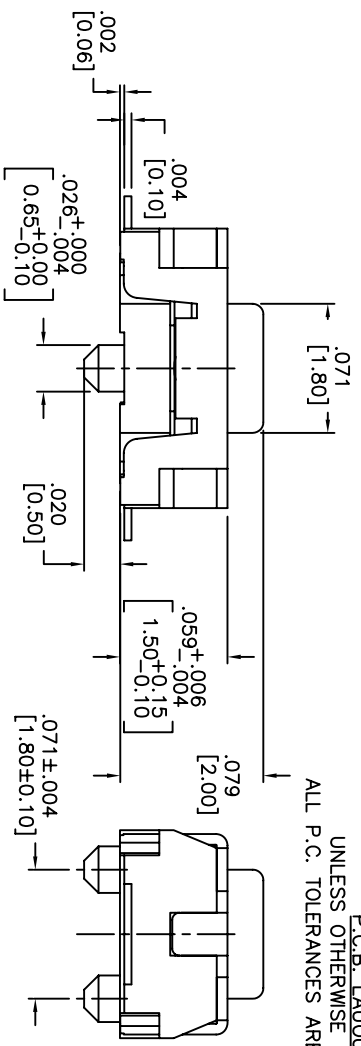
0A. INSECT: DESIGNATES CRITICAL DIMENSION		63 Nork Rd. 01850 Haverhill, MA (978) 372-5554 Fax: (978) 372-5554		DRN. CJD BR:
TOLERANCES (UNLESS OTHERWISE SPECIFIED) .XX± = ±0.001 (0.01) .XXX± = ±0.0008 (0.002) .XXXX± = ±0.0008 (0.002) ANGLE = 40.5°		SHEET 1 OF 1 SIZE B SCALE 15:1 THIRD ANGLE PROJECTION	PJD 	
DO NOT SCALE DRAWING		DATE 2/4/08 DRAWING NO. AMPTLGP2VTR	REV B	

THIS DOCUMENT IS THE PROPERTY OF APDM COMPONENTS AND SHALL NOT BE COPIED, REPRODUCED, DISCLOSED OR USED AS THE BASIS FOR MANUFACTURING OR SALE WITHOUT PERMISSION OF A DULY AUTHORIZED REPRESENTATIVE OF APDM COMPONENTS INC.

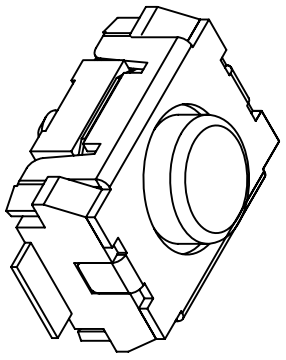


HATCHED AREA SHOWS SOLDERING LAND

P.C.B. LAYOUT
UNLESS OTHERWISE SPECIFIED
ALL P.C. TOLERANCES ARE ±.002 [0.50]



CIRCUIT



DATE	SYM	REVISION RECORD	DWN.	CK.
5/08	B	ECO# 778	CD	PD

DESCRIPTION: VERTICAL PUSH MECHANICAL CONTACT SWITCH.

SPECIFICATIONS:

OPERATION FORCE: 160± 50gf
 OPERATION TEMP.: -25°C TO +70°C.
 STORAGE TEMP.: -30°C TO +80°C.
 ELECTRICAL LIFE: 200,000 CYCLES.
 RATING: 50ma, 12VDC.
 VIBRATION RESISTANCE: PASSES METHOD 201A
 MIL-STD-202F
 SHOCK RESISTANCE: 50G PER METHOD 213B
 MIL-STD-202F
 CONTACT RESISTANCE: 100mΩ MAX.
 INSULATION RESISTANCE: 100MΩ MIN. AT 100VDC.
 DIELECTRIC STRENGTH: 100VAC/1 MINUTE.
 CONTACT ARRANGEMENT: 1 POLE 1 THROW.
 TRAVEL: .005 ±.002 [0.13 ±0.05]

MATERIALS:

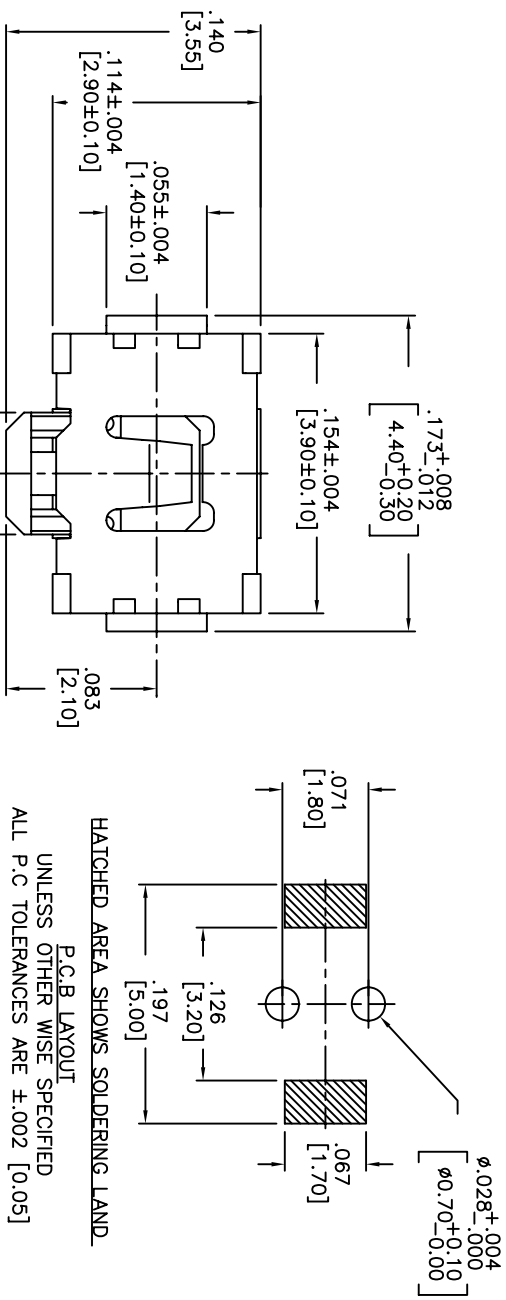
COVER: STAINLESS STEEL
 BASE: LCP HIGH-TEMP. THERMOPLASTIC.
 COLOR, WHITE.
 STEM: LCP HIGH-TEMP. THERMOPLASTIC.
 COLOR, BLACK.
 CONTACT DISK: STAINLESS STEEL WITH SILVER CLADDING
 TERMINAL: BRASS WITH SILVER PLATING
 TAPE: TEFLON.
 TAPE & REEL PACKAGING: 2,000 PER REEL
 SOLDERING:
 HAND SOLDERING: 30 WATT IRON AT 320°C FOR 2 SECONDS
 IR REFLOW: 240°C MAX
 ROHS COMPLIANT

DESIGNER'S INITIALS	63 Neck Rd.	PHN.	CJD
DATE	6/30/05	DRAWING NO.	AMPTCFGP2VTR
TOLERANCES (UNLESS OTHERWISE SPECIFIED)	.XX± = ±0.001 [0.25] .XXX± = ±0.0008 [0.20] .XXXX± = ±0.0008 [0.02] ANGLE = 30.5°		
TITLE	TACT SWITCH		
SHEET	1 OF 1	SCALE	15:1
THIRD ANGLE PROJECTION			

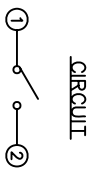
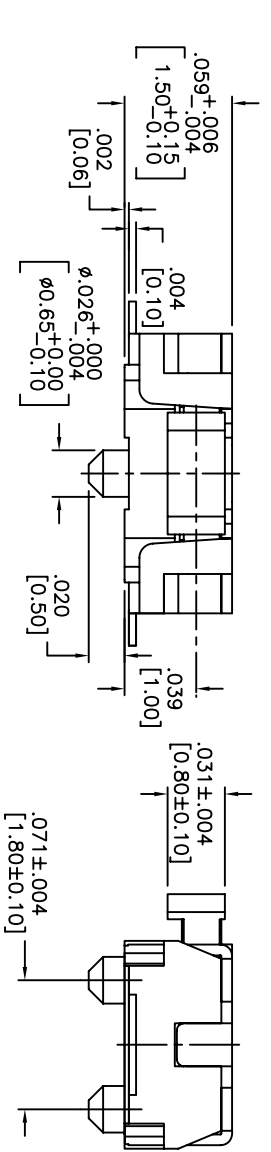
A 1 2 3 4 5 6 7 8

THIS DOCUMENT IS THE PROPERTY OF APEM COMPONENTS AND SHALL NOT BE COPIED, REPRODUCED, DISCLOSED OR SALE WITHOUT PERMISSION OF A DULY AUTHORIZED REPRESENTATIVE OF APEM COMPONENTS INC.

DATE	SYM	REVISION RECORD	DWN.	CK.
5/08	B	ECO# 778	CD	PD



HATCHED AREA SHOWS SOLDERING LAND
P.C.B LAYOUT
UNLESS OTHER WISE SPECIFIED
ALL P.C TOLERANCES ARE ±.002 [0.05]



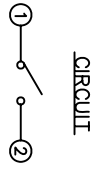
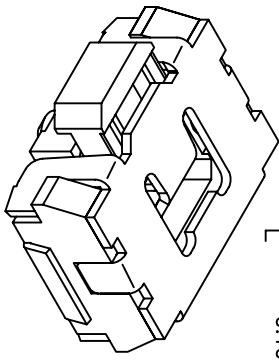
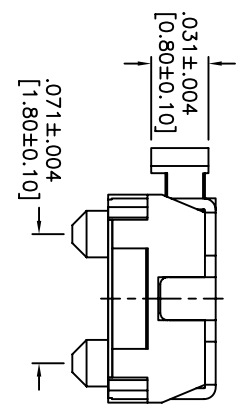
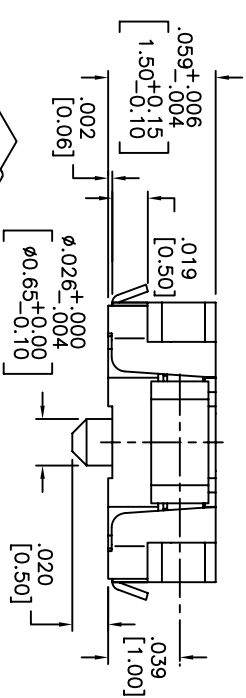
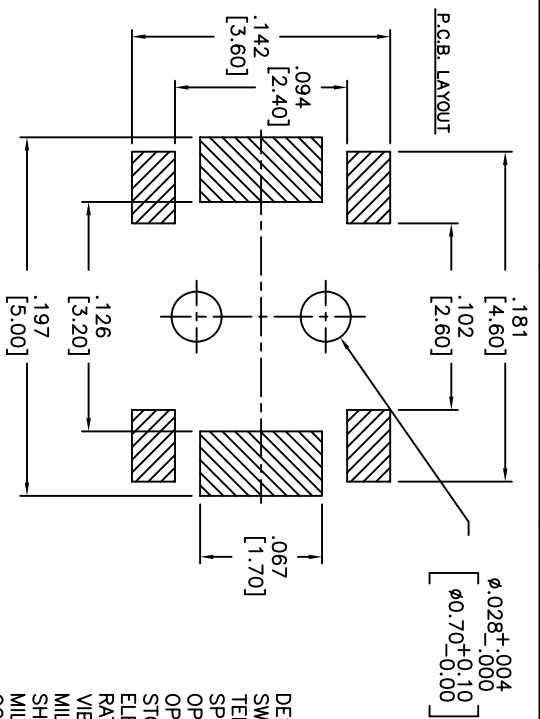
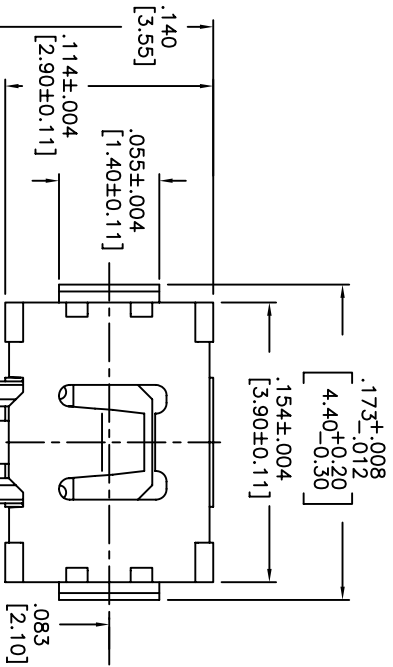
DESCRIPTION: SIDE PUSH MECHANICAL CONTACT SWITCH.
SPECIFICATIONS:
OPERATION FORCE: 220± 65gf
STROKE: 0.2±0.10mm
OPERATION TEMP.: -25°C TO +70°C.
STORAGE TEMP.: -30°C TO +80°C.
ELECTRICAL LIFE: 100,000 CYCLES.
RATING: 50mA, 12VDC.
CONTACT RESISTANCE: 100mΩ MAX.
INSULATION RESISTANCE: 100MΩ MIN. AT 100VDC.
DIELECTRIC STRENGTH: 100VAC/1 MINUTE.
CONTACT ARRANGEMENT: 1 POLE 1 THROW.
VIBRATION TEST: PASSED METHOD 201A
MIL-STD-202F.
SHOCK TEST: 50G PER METHOD 213B CONDITION A OF MIL-STD-202F
MATERIALS:
COVER: STAINLESS STEEL
BASE: LCP HIGH-TEMP. THERMOPLASTIC.
COLOR: WHITE.
STEM: LCP HIGH-TEMP. THERMOPLASTIC.
COLOR: BLACK.
CONTACT DISK: STAINLESS STEEL
WITH SILVER CLADDING
TERMINAL: BRASS WITH SILVER PLATING
PACKAGING: TAPE AND REEL
(3,500 PEICES PER REEL)
ROHS COMPLIANT
LEAD FREE SOLDERING COMPATIBLE
HAND SOLDERING: 320°C MAX WITH 30 WATT IRON FOR 2 SECONDS
IR REFLOW: 260°C MAX

DESIGNER'S INITIAL	APEM	63 Neck Rd. Horseshill, VA 01835 Tel: 978-372-3534 Fax: 978-372-3534	DRN. CJD
TOLERANCES (UNLESS OTHERWISE SPECIFIED)			CHK. PJD
.XX±.XX(X)			
.XXX±.XXX(X)			
.XXXX±.XXXX(X)			
ANGLE = 40.5°			
DO NOT SCALE			
DATE	5/2/06	DRAWING NO.	AMPPTCFVTR
			REV B

1 2 3 4 5 6 7 8

THIS DOCUMENT IS THE PROPERTY OF APEN COMPONENTS AND SHALL NOT BE COPIED, REPRODUCED, DISCLOSED OR USED AS THE BASIS FOR MANUFACTURING OR SALE WITHOUT PERMISSION OF A DULY AUTHORIZED REPRESENTATIVE OF APEN COMPONENTS INC.

DATE	SYM	REVISION RECORD	DWN.	CK.
1/06	B	ECO# 526	CD	PD
5/08	C	ECO# 778	CD	PD



DESCRIPTION: SIDE PUSH MECHANICAL CONTACT SWITCH, WITH BENDING AND GROUNDING TERMINALS.

SPECIFICATIONS:

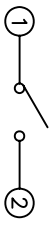
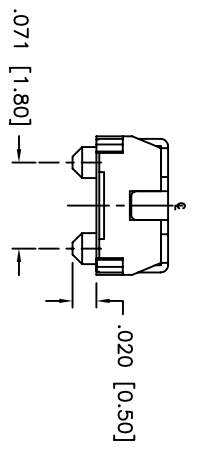
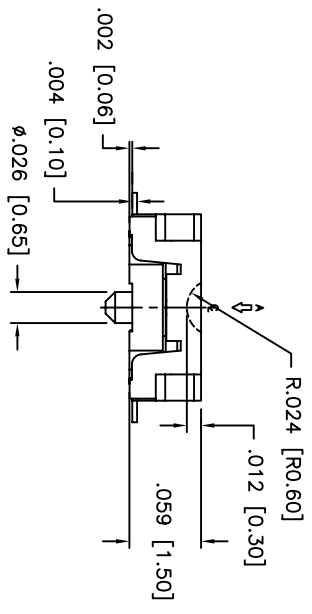
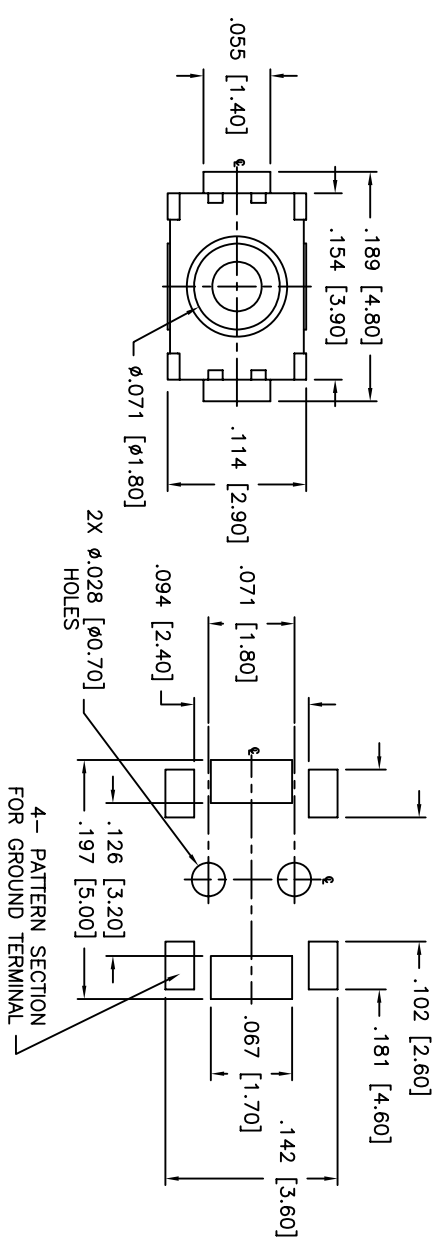
- OPERATION FORCE: 220± 65gf
- OPERATION TEMP.: -25°C TO +70°C.
- STORAGE TEMP.: -30°C TO +80°C.
- ELECTRICAL LIFE: 100,000 CYCLES.
- RATING: 50mA, 12VDC.
- VIBRATION RESISTANCE: PASSES METHOD 201A MIL-STD-202F
- SHOCK RESISTANCE: 50G PER METHOD 213B MIL-STD-202F
- CONTACT RESISTANCE: 100MΩ MAX.
- INSULATION RESISTANCE: 100MΩ MIN. AT 100VDC.
- DIELECTRIC STRENGTH: 100VAC/1 MINUTE.
- CONTACT ARRANGEMENT: 1 POLE 1 THROW.
- STROKE: .008 ±.002 [0.2 ±0.05]

MATERIALS:
 COVER: STAINLESS STEEL
 BASE: LCP HIGH-TEMP. THERMOPLASTIC.
 COLOR: WHITE.
 STEM: LCP HIGH-TEMP. THERMOPLASTIC.
 COLOR: BLACK.

CONTACT DISK: STAINLESS STEEL WITH SILVER CLADDING
 TERMINAL: BRASS WITH SILVER PLATING
 TAPE: TEFLON.
 TAPE & REEL PACKAGING, 3500 PER REEL
 HAND SOLDERING: 30 WATT IRON AT 320°C FOR 2 SECONDS
 IR REFLOW: 240°C MAX
 ROHS COMPLIANT

Q.A. INSPECT 		DESIGNER'S SYMBOL DIMENSION TOLERANCES (UNLESS AS NOTED) .XX±.XX[0.5] .XXX±.XXX[0.20] .XXXX±.XXXX[0.02] ANGLE = 30.5°		APEN APEN COMPONENTS INC. 63 Neck Rd. Haverhill, MA 01830 Phone: 978-372-5554 Fax: 978-372-5554		REV. CJD BR: PJD OK: PJD	
DO NOT SCALE DATE: 06/30/05 DRAWING NO.: AMPPTCLGVTR		TITLE TACT SWITCH		SIZE B 15:1		THIRD ANGLE PROJECTION 	

THIS DOCUMENT IS THE PROPERTY OF APDM COMPONENTS AND SHALL NOT BE COPIED, REPRODUCED, DISCLOSED OR USED AS THE BASIS FOR MANUFACTURING OR SALE WITHOUT PERMISSION OF A DULY AUTHORIZED REPRESENTATIVE OF APDM COMPONENTS INC.



SCHEMATIC

DATE	SYM	REVISION RECORD	DWN.	CK.
1/06	A	ECO # 526	CD	PD
5/08	B	ECO# 778	CD	PD

DESCRIPTION: SPST, NORMALLY OPEN, MOMENTARY, SURFACE MOUNT TACT SWITCH WITH LOCATING PINS

SPECIFICATIONS:
 CONTACT RATING: 50mA @ 12VDC
 INITIAL CONTACT RESISTANCE: 100MOHMS MAX.
 INSULATION RESISTANCE: 100MOHMS MIN. @ 500VDC
 DIELECTRIC STRENGTH: 100VAC FOR 1 MINUTE
 ELECTRICAL LIFE: 200,000 CYCLES MIN.
 OPERATING TEMPERATURE RANGE: -25°C to +70°C
 STOP STRENGTH: MAX 3kgf VERTICAL STATIC LOAD
 CONT. FOR 15 SEC.

ACTUATION FORCE: 160± 50gf
 STORAGE TEMPERATURE RANGE: -30°C TO +80°C
 SHOCK RESISTANCE: 50G PER METHOD 213B, MIL-STD-202F
 VIBRATION RESISTANCE: PASSES METHOD 201A, MIL-STD-202F

SOLDERING:
 IR REFLOW: 240°C MAX.
 HAND SOLDERING: 350°C MAX. FOR 3 SECONDS MAX.
 (30 WATT IRON MAX.)

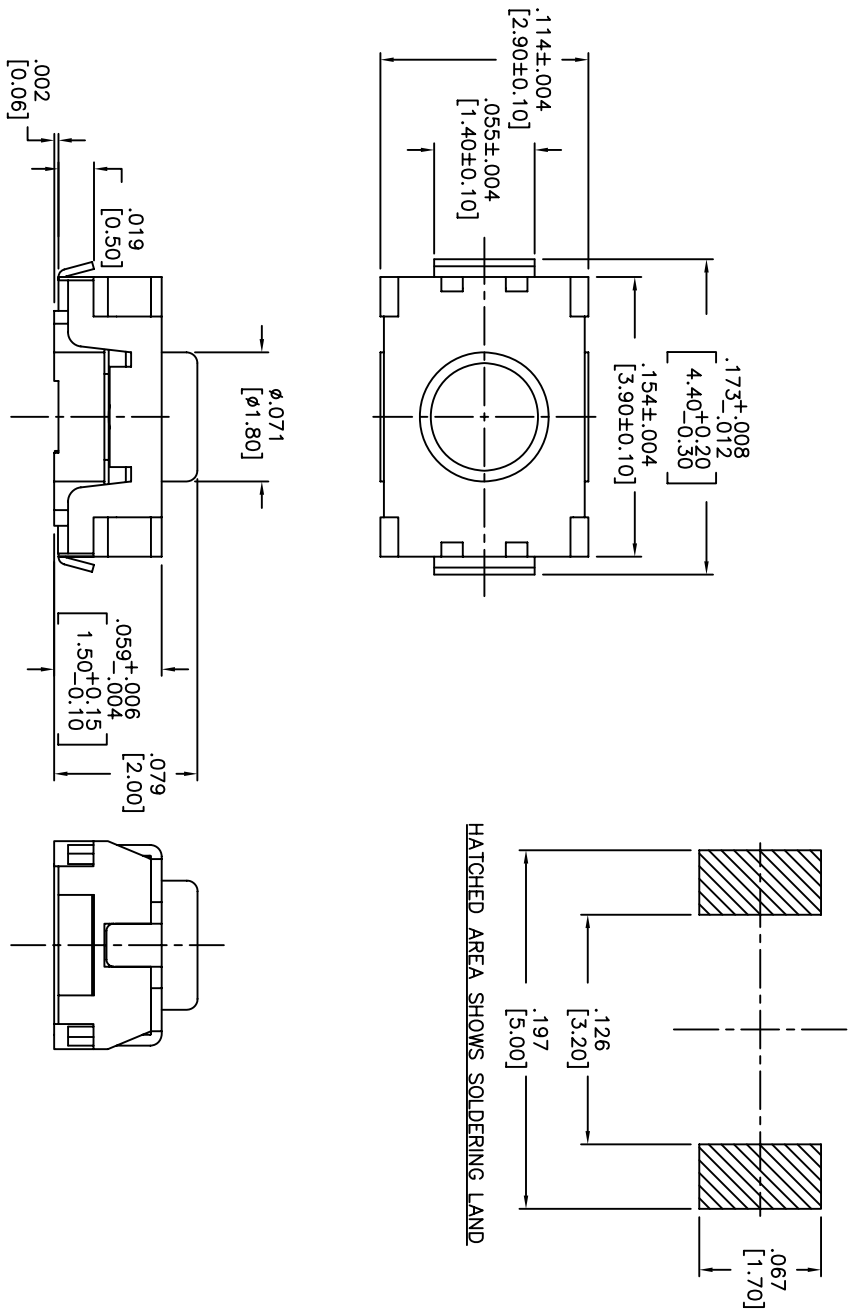
MATERIALS:
 BASE: LCP HIGH-TEMP THERMOPLASTIC UL94V-0
 ACTUATOR: LCP HIGH-TEMP THERMOPLASTIC UL94V-0
 COVER: STAINLESS STEEL
 TERMINALS: SILVER PLATED BRASS
 SHORTING CONTACT: STAINLESS STEEL WITH SILVER CLADDING
 TAPE: TEFLON
 ROHS COMPLIANT

NOTE:
 1. AFTER SOLDERING, RETURN SWITCHES TO NORMAL TEMPERATURE BEFORE WASHING.

DESIGNER'S INITIAL	APDM	63 Neck Rd. Haverhill, MA 01830 Tel: 978-372-3554 Fax: 978-372-3554	DRN. CJD
TOLERANCES (UNLESS AS NOTED) .XX=±.02[0.5] .XXX=±.008[0.20] .XXXX=±.0008[0.02] ANGLE = 40.5°	TITLE TACT SWITCH WITH LOCATING PINS	SHEET 1 OF 1	PKT. PJD
DO NOT SCALE	DATE 07/20/05	SIZE B	SCALE 10:1
	DRAWING NO. AMPTCFGP1VTR		THIRD ANGLE PROJECTION
			REV B

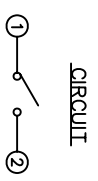
THIS DOCUMENT IS THE PROPERTY OF APDM COMPONENTS AND SHALL NOT BE COPIED, REPRODUCED, DISCLOSED OR USED AS THE BASIS FOR MANUFACTURING OR SALE WITHOUT PERMISSION OF A DULY AUTHORIZED REPRESENTATIVE OF APDM COMPONENTS INC.

P.C.B. LAYOUT



DATE	SYM	REVISION RECORD	DWN.	CK.
1/06	A	ECO# 526	CD	PD
5/08	B	ECO# 778	CD	PD

DESCRIPTION: VERTICAL PUSH MECHANICAL CONTACT SWITCH.
 SPECIFICATIONS:
 OPERATION FORCE: 220± 65gf
 OPERATION TEMP.: -25°C TO +70°C.
 STORAGE TEMP.: -30°C TO +80°C.
 ELECTRICAL LIFE: 200,000 CYCLES.
 RATING: 50mA, 12VDC.
 VIBRATION RESISTANCE: PASSES METHOD 201A
 MIL-STD-202F
 SHOCK RESISTANCE: 50G PER METHOD 213B
 MIL-STD-202F
 CONTACT RESISTANCE: 100mΩ MAX.
 INSULATION RESISTANCE: 100MΩ MIN. AT 100VDC.
 DIELECTRIC STRENGTH: 100VAC/1 MINUTE.
 CONTACT ARRANGEMENT: 1 POLE 1 THROW.
 MATERIALS:
 COVER: STAINLESS STEEL
 BASE: LCP HIGH-TEMP. THERMOPLASTIC.
 COLOR, WHITE.
 STEM: LCP HIGH-TEMP. THERMOPLASTIC.
 COLOR, BLACK.
 CONTACT DISK: STAINLESS STEEL WITH SILVER CLADDING
 TERMINAL: BRASS WITH SILVER PLATING
 TAPE & REEL PACKAGING, 2,000 PER REEL
 SOLDERING:
 HAND SOLDERING: 30 WATT IRON AT 320°C FOR 2 SECONDS
 IR REFLOW: 240°C MAX
 ROHS COMPLIANT
 LEAD FREE PROCESS COMPATIBLE

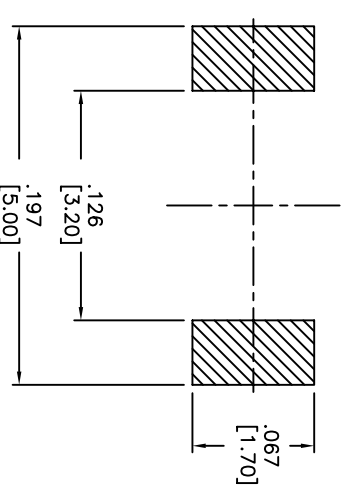
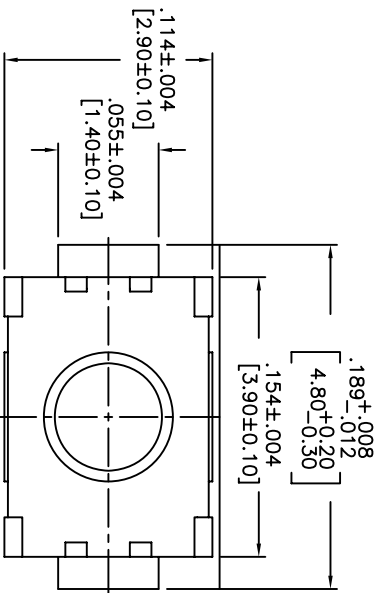


0A. INSPECT: DESIGNATES CRITICAL DIMENSION		63 Neck Rd. 01835 North Attleboro, MA Phone: 508-372-3554 Fax: 508-372-3554		DRN. CJD BR. PJD
TOLERANCES (UNLESS OTHERWISE SPECIFIED) .XX±.XX(0.05) .XXX±.XXX(0.20) .XXXX±.XXXX(0.02) ANGLE = 40.5°		SHEET 1 OF 1 SIZE B SCALE 15:1	THIRD ANGLE PROJECTION 	
TITLE TACT SWITCH		DATE: 01/23/06 DRAWING NO. AMPTLP2VTR REV. B		

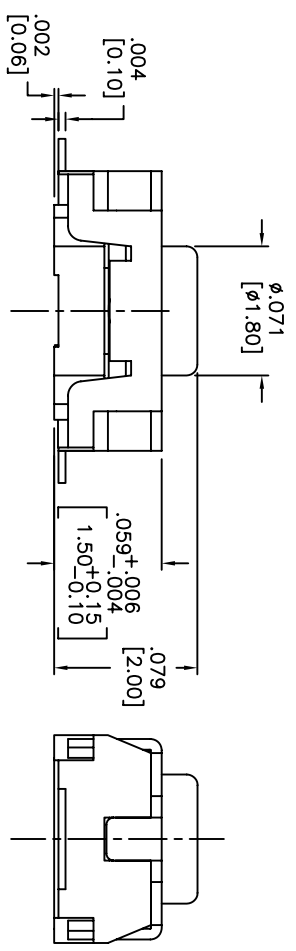
1 2 3 4 5 6 7 8

THIS DOCUMENT IS THE PROPERTY OF APDM COMPONENTS AND SHALL NOT BE COPIED, REPRODUCED, DISCLOSED OR SALE WITHOUT PERMISSION OF A DULY AUTHORIZED REPRESENTATIVE OF APDM COMPONENTS INC.

P.C.B. LAYOUT



HATCHED AREA SHOWS SOLDERING LAND



DATE	SYM	REVISION RECORD	DWN.	CK.
5/08	B	ECO# 778	CD	PD

DESCRIPTION: VERTICAL PUSH MECHANICAL CONTACT SWITCH.

SPECIFICATIONS:

OPERATION FORCE: 160± 50gf

OPERATION TEMP.: -25°C TO +70°C.

STORAGE TEMP.: -30°C TO +80°C.

ELECTRICAL LIFE: 200,000 CYCLES.

RATING: 50mA, 12VDC.

VIBRATION RESISTANCE: PASSES METHOD 201A

MIL-STD-202F

SHOCK RESISTANCE: 50G PER METHOD 213B

MIL-STD-202F

CONTACT RESISTANCE: 100mΩ MAX.

INSULATION RESISTANCE: 100MΩ MIN. AT 100VDC.

DIELECTRIC STRENGTH: 100VAC/1 MINUTE.

CONTACT ARRANGEMENT: 1 POLE 1 THROW.

MATERIALS:

COVER: STAINLESS STEEL

BASE: LCP HIGH-TEMP. THERMOPLASTIC.

COLOR, WHITE.

STEM: LCP HIGH-TEMP. THERMOPLASTIC.

COLOR, BLACK.

CONTACT DISK: STAINLESS STEEL

WITH SILVER CLADDING

TERMINAL: BRASS WITH SILVER PLATING

TAPE: TEFLON.

TAPE & REEL PACKAGING, 2,000 PER REEL

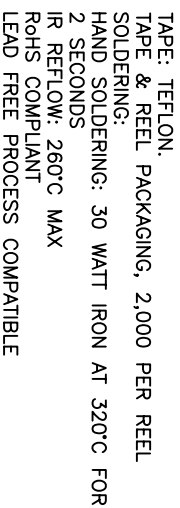
SOLDERING:

HAND SOLDERING: 30 WATT IRON AT 320°C FOR 2 SECONDS

IR REFLOW: 260°C MAX

RoHS COMPLIANT

LEAD FREE PROCESS COMPATIBLE



Q.A. INSPECT:		DESIGNATES CRITICAL DIMENSION		TOLERANCES (UNLESS OTHERWISE SPECIFIED)		ANGLE = 40.5°	
APDM		63 Neck Rd. 01835		1 OF 1		SCALE 15:1	
APDM		Tel: 413-252-3524		B		THIRD ANGLE PROJECTION	
APDM		Fax: 413-252-3524		B		REV B	
DATE		DRAWING NO.		REV			
01/23/06		AMPTFP2VTR		B			

Компания «Океан Электроники» предлагает заключение долгосрочных отношений при поставках импортных электронных компонентов на взаимовыгодных условиях!

Наши преимущества:

- Поставка оригинальных импортных электронных компонентов напрямую с производств Америки, Европы и Азии, а так же с крупнейших складов мира;
- Широкая линейка поставок активных и пассивных импортных электронных компонентов (более 30 млн. наименований);
- Поставка сложных, дефицитных, либо снятых с производства позиций;
- Оперативные сроки поставки под заказ (от 5 рабочих дней);
- Экспресс доставка в любую точку России;
- Помощь Конструкторского Отдела и консультации квалифицированных инженеров;
- Техническая поддержка проекта, помощь в подборе аналогов, поставка прототипов;
- Поставка электронных компонентов под контролем ВП;
- Система менеджмента качества сертифицирована по Международному стандарту ISO 9001;
- При необходимости вся продукция военного и аэрокосмического назначения проходит испытания и сертификацию в лаборатории (по согласованию с заказчиком);
- Поставка специализированных компонентов военного и аэрокосмического уровня качества (Xilinx, Altera, Analog Devices, Intersil, Interpoint, Microsemi, Actel, Aeroflex, Peregrine, VPT, Syfer, Eurofarad, Texas Instruments, MS Kennedy, Miteq, Cobham, E2V, MA-COM, Hittite, Mini-Circuits, General Dynamics и др.);

Компания «Океан Электроники» является официальным дистрибьютором и эксклюзивным представителем в России одного из крупнейших производителей разъемов военного и аэрокосмического назначения «**JONHON**», а так же официальным дистрибьютором и эксклюзивным представителем в России производителя высокотехнологичных и надежных решений для передачи СВЧ сигналов «**FORSTAR**».



JONHON

«**JONHON**» (основан в 1970 г.)

Разъемы специального, военного и аэрокосмического назначения:

(Применяются в военной, авиационной, аэрокосмической, морской, железнодорожной, горно- и нефтедобывающей отраслях промышленности)

«**FORSTAR**» (основан в 1998 г.)

ВЧ соединители, коаксиальные кабели,
кабельные сборки и микроволновые компоненты:

(Применяются в телекоммуникациях гражданского и специального назначения, в средствах связи, РЛС, а так же военной, авиационной и аэрокосмической отраслях промышленности).



Телефон: 8 (812) 309-75-97 (многоканальный)

Факс: 8 (812) 320-03-32

Электронная почта: ocean@oceanchips.ru

Web: <http://oceanchips.ru/>

Адрес: 198099, г. Санкт-Петербург, ул. Калинина, д. 2, корп. 4, лит. А