

# NLAS4684

## Ultra-Low Resistance Dual SPDT Analog Switch

The NLAS4684 is an advanced CMOS analog switch fabricated in Sub-micron silicon gate CMOS technology. The device is a dual Independent Single Pole Double Throw (SPDT) switch featuring Ultra-Low  $R_{ON}$  of 0.5  $\Omega$ , for the Normally Closed (NC) switch, and 0.8  $\Omega$  for the Normally Opened switch (NO) at 2.7 V.

The part also features guaranteed Break Before Make switching, assuring the switches never short the driver.

The NLAS4684 is available in a 2.0 x 1.5 mm bumped die array. The pitch of the solder bumps is 0.5 mm for easy handling.

### Features

- Ultra-Low  $R_{ON}$ , < 0.5  $\Omega$  at 2.7 V
- Threshold Adjusted to Function with 1.8 V Control at  $V_{CC} = 2.7-3.3$  V
- Single Supply Operation from 1.8–5.5 V
- Tiny 2 x 1.5 mm Bumped Die
- Low Crosstalk, < 83 dB at 100 kHz
- Full 0– $V_{CC}$  Signal Handling Capability
- High Isolation, –65 dB at 100 kHz
- Low Standby Current, < 50 nA
- Low Distortion, < 0.14% THD
- $R_{ON}$  Flatness of 0.15  $\Omega$
- Pin for Pin Replacement for MAX4684
- High Continuous Current Capability  
± 300 mA Through Each Switch
- Large Current Clamping Diodes at Analog Inputs  
± 300 mA Continuous Current Capability
- Pb-Free Packages are Available

### Applications

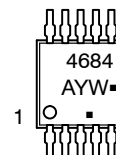
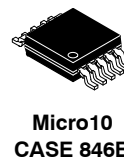
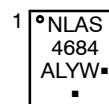
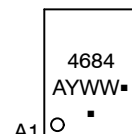
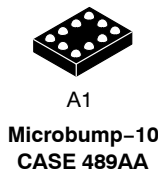
- Cell Phone
- Speaker Switching
- Power Switching
- Modems
- Automotive



ON Semiconductor®

<http://onsemi.com>

### MARKING DIAGRAMS



A = Assembly Location  
L = Wafer Lot  
Y = Year  
WW, W = Work Week  
▪ = Pb-Free Package

(Note: Microdot may be in either location)

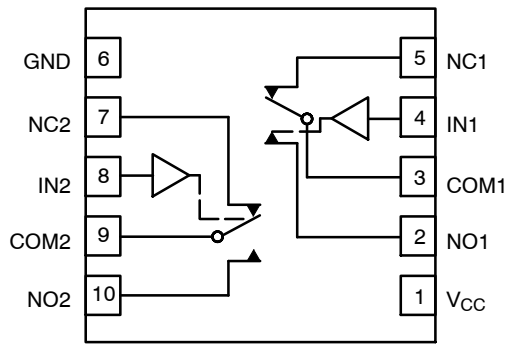
### FUNCTION TABLE

| IN 1, 2 | NO 1, 2 | NC 1, 2 |
|---------|---------|---------|
| 0       | OFF     | ON      |
| 1       | ON      | OFF     |

### ORDERING INFORMATION

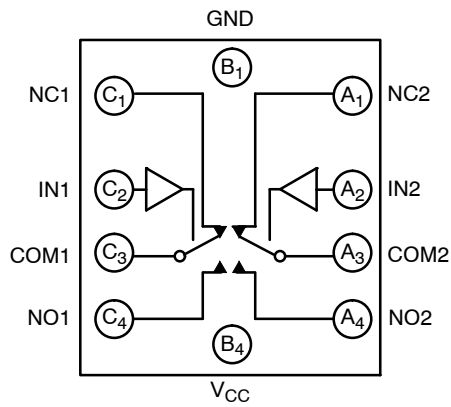
See detailed ordering and shipping information in the package dimensions section on page 11 of this data sheet.

# NLAS4684



(Top View)

**Figure 1. Pin Connections and Logic Diagram (DFN10 and Micro10)**



(Top View)

**Figure 2. Pin Connections and Logic Diagram (Microbump-10)**

**MAXIMUM RATINGS**

| Symbol                | Parameter   | Value  | Unit |
|-----------------------|---|--|------|
| V <sub>CC</sub>       | Positive DC Supply Voltage  | - 0.5 to +7.0                                  | V    |
| V <sub>IS</sub>       | Analog Input Voltage (V <sub>NO</sub> , V <sub>NC</sub> , or V <sub>COM</sub> ) | -0.5 ≤ V <sub>IS</sub> ≤ V <sub>CC</sub> + 0.5 | V    |
| V <sub>IN</sub>       | Digital Select Input Voltage  | - 0.5 ≤ V <sub>I</sub> ≤ +7.0                  | V    |
| I <sub>anl1</sub>     | Continuous DC Current from COM to NC/NO   | ± 300  | mA   |
| I <sub>anl-pk 1</sub> | Peak Current from COM to NC/NO, 10 duty cycle (Note 1)                          | ± 500  | mA   |
| I <sub>clmp</sub>     | Continuous DC Current into COM/NO/NC  | ± 300  | mA   |
| I <sub>clmp 1</sub>   | Peak Current into Input Clamp Diodes at COM/NC/NO                               | ± 500  | mA   |

Stresses exceeding Maximum Ratings may damage the device. Maximum Ratings are stress ratings only. Functional operation above the Recommended Operating Conditions is not implied. Extended exposure to stresses above the Recommended Operating Conditions may affect device reliability.

1. Defined as 10% ON, 90% off duty cycle.

**RECOMMENDED OPERATING CONDITIONS**

| Symbol                          | Parameter                          | Min  | Max             | Unit |
|---------------------------------|------------------------------------|--|-----------------|------|
| V <sub>CC</sub>                 | DC Supply Voltage                  | 1.8  | 5.5             | V    |
| V <sub>IN</sub>                 | Digital Select Input Voltage       | GND  | 5.5             | V    |
| V <sub>IS</sub>                 | Analog Input Voltage (NC, NO, COM) | GND  | V <sub>CC</sub> | V    |
| T <sub>A</sub>                  | Operating Temperature Range        | - 55   | + 125           | °C   |
| t <sub>r</sub> , t <sub>f</sub> | Input Rise or Fall Time, SELECT    | V <sub>CC</sub> = 3.3 V ± 0.3 V<br>0<br>V <sub>CC</sub> = 5.0 V ± 0.5 V<br>0 | 100<br>20       | ns/V |
| ESD                             | Human Body Model – All Pins        |  | 5               | kV   |

**DC CHARACTERISTICS – Digital Section (Voltages Referenced to GND)**

| Symbol           | Parameter  | Condition   | V <sub>CC</sub> ± 10% | Guaranteed Limit |        |         | Unit |
|------------------|--|---|-----------------------|------------------|--------|---------|------|
|                  |  |   |                       | - 55°C to 25°C   | < 85°C | < 125°C |      |
| V <sub>IH</sub>  | Minimum High-Level Input Voltage, Select Inputs (Figure 9) |   | 2.0                   | 1.4              | 1.4    | 1.4     | V    |
|                  |  |   | 2.5                   | 1.4              | 1.4    | 1.4     |      |
|                  |  |   | 3.0                   | 1.4              | 1.4    | 1.4     |      |
|                  |  |   | 5.0                   | 2.0              | 2.0    | 2.0     |      |
| V <sub>IL</sub>  | Maximum Low-Level Input Voltage, Select Inputs (Figure 9)  |   | 2.0                   | 0.5              | 0.5    | 0.5     | V    |
|                  |  |   | 2.5                   | 0.5              | 0.5    | 0.5     |      |
|                  |  |   | 3.0                   | 0.5              | 0.5    | 0.5     |      |
|                  |  |   | 5.0                   | 0.8              | 0.8    | 0.8     |      |
| I <sub>IN</sub>  | Maximum Input Leakage Current, Select Inputs               | V <sub>IN</sub> = 5.5 V or GND                      | 5.5                   | ± 1.0            | ± 1.0  | ± 1.0   | µA   |
| I <sub>OFF</sub> | Power Off Leakage Current                                  | V <sub>IN</sub> = 5.5 V or GND                      | 0                     | ± 10             | ± 10   | ± 10    | µA   |
| I <sub>CC</sub>  | Maximum Quiescent Supply Current (Note 2)                  | Select and V <sub>IS</sub> = V <sub>CC</sub> or GND | 5.5                   | ± 180            | ± 200  | ± 200   | nA   |

2. Guaranteed by design.

# NLAS4684

## DC ELECTRICAL CHARACTERISTICS – Analog Section

| Symbol                                       | Parameter  | Condition  | $V_{CC} \pm 10\%$ | Guaranteed Maximum Limit |      |        |      |         |      | Unit     |
|--|--|--|-------------------|--------------------------|------|--------|------|---------|------|----------|
|  |  |  |                   | -55°C to 25°C            |      | < 85°C |      | < 125°C |      |          |
|  |  |  |                   | Min                      | Max  | Min    | Max  | Min     | Max  |          |
| R <sub>ON</sub> (NC)                         | NC "ON" Resistance<br>(Note 3)                             | $V_{IN} \leq V_{IL}$<br>$V_{IS} = \text{GND to } V_{CC}$<br>$ I_{IN}  \leq 100 \text{ mA}$   | 2.5               |                          | 0.6  |        | 0.7  |         | 0.8  | $\Omega$ |
|  |  |  | 3.0               |                          | 0.5  |        | 0.5  |         | 0.5  |          |
|  |  |  | 5.0               |                          | 0.4  |        | 0.4  |         | 0.5  |          |
| R <sub>ON</sub> (NO)                         | NO "ON" Resistance<br>(Note 3)                             | $V_{IN} \geq V_{IH}$<br>$V_{IS} = \text{GND to } V_{CC}$<br>$ I_{IN}  \leq 100 \text{ mA}$   | 2.5               |                          | 1.0  |        | 1.0  |         | 1.0  | $\Omega$ |
|  |  |  | 3.0               |                          | 0.8  |        | 0.8  |         | 1.0  |          |
|  |  |  | 5.0               |                          | 0.8  |        | 0.8  |         | 0.9  |          |
| R <sub>FLAT</sub> (NC)                       | NC On-Resistance<br>Flatness (Notes 3, 5)                  | $I_{COM} = 100 \text{ mA}$<br>$V_{IS} = 0 \text{ to } V_{CC}$  | 2.5               |                          | 0.15 |        | 0.15 |         | 0.15 | $\Omega$ |
|  |  |  | 3.0               |                          | 0.15 |        | 0.15 |         | 0.15 |          |
|  |  |  | 5.0               |                          | 0.15 |        | 0.15 |         | 0.15 |          |
| R <sub>FLAT</sub> (NO)                       | NO On-Resistance<br>Flatness (Notes 3, 5)                  | $I_{COM} = 100 \text{ mA}$<br>$V_{IS} = 0 \text{ to } V_{CC}$  | 2.5               |                          | 0.35 |        | 0.35 |         | 0.35 | $\Omega$ |
|  |  |  | 3.0               |                          | 0.35 |        | 0.35 |         | 0.35 |          |
|  |  |  | 5.0               |                          | 0.35 |        | 0.35 |         | 0.35 |          |
| $\Delta R_{ON}$                              | On-Resistance Match<br>Between Channels<br>(Notes 3 and 4) | $V_{IS} = 1.3 \text{ V};$<br>$I_{COM} = 100 \text{ mA}$<br>$V_{IS} = 1.5 \text{ V};$<br>$I_{COM} = 100 \text{ mA}$<br>$V_{IS} = 2.8 \text{ V};$<br>$I_{COM} = 100 \text{ mA}$  | 2.5               |                          | 0.18 |        | 0.18 |         | 0.18 | $\Omega$ |
|  |  |  | 3.0               |                          | 0.06 |        | 0.06 |         | 0.06 |          |
|  |  |  | 5.0               |                          | 0.06 |        | 0.06 |         | 0.06 |          |
| I <sub>NC(OFF)</sub><br>I <sub>NO(OFF)</sub> | NC or NO Off<br>Leakage Current<br>(Figure 13) (Note 3)    | $V_{IN} = V_{IL} \text{ or } V_{IH}$<br>$V_{NO} \text{ or } V_{NC} = 1.0$<br>$V_{COM} = 4.5 \text{ V}$   | 5.5               | -1                       | 1    | -10    | 10   | -100    | 100  | nA       |
| I <sub>COM(ON)</sub>                         | COM ON<br>Leakage Current<br>(Figure 13) (Note 3)          | $V_{IN} = V_{IL} \text{ or } V_{IH}$<br>$V_{NO} 1.0 \text{ V or } 4.5 \text{ V with}$<br>$V_{NC} \text{ floating or}$<br>$V_{NC} 1.0 \text{ V or } 4.5 \text{ V with}$<br>$V_{NO} \text{ floating}$<br>$V_{COM} = 1.0 \text{ V or } 4.5 \text{ V}$ | 5.5               | -2                       | 2    | -20    | 20   | -200    | 200  | nA       |

3. Guaranteed by design. Resistance measurements do not include test circuit or package resistance.

4.  $\Delta R_{ON} = R_{ON(MAX)} - R_{ON(MIN)}$  between NC1 and NC2 or between NO1 and NO2.

5. Flatness is defined as the difference between the maximum and minimum value of on-resistance as measured over the specified analog signal ranges.

# NLAS4684

## AC ELECTRICAL CHARACTERISTICS (Input $t_r = t_f = 3.0$ ns) (Typical characteristics are at 25°C)

| Symbol           | Parameter                               | Test Conditions   | V <sub>CC</sub><br>(V) | V <sub>IS</sub><br>(V) | Guaranteed Maximum Limit |     |     |        |     |         | Unit |     |
|------------------|---|---|------------------------|------------------------|--------------------------|-----|-----|--------|-----|---------|------|-----|
|                  |   |   |                        |                        | -55°C to 25°C            |     |     | < 85°C |     | < 125°C |      |     |
|                  |   |   |                        |                        | Min                      | Typ | Max | Min    | Max | Min     |      | Max |
| t <sub>ON</sub>  | Turn-On Time                            | R <sub>L</sub> = 50 Ω, C <sub>L</sub> = 35 pF<br>(Figures 4 and 5)                    | 2.5                    | 1.3                    |                          |     | 60  |        | 70  |         | 70   | ns  |
|                  |   |   | 3.0                    | 1.5                    |                          |     | 50  |        | 60  |         | 60   |     |
|                  |   |   | 5.0                    | 2.8                    |                          |     | 30  |        | 35  |         | 35   |     |
| t <sub>OFF</sub> | Turn-Off Time                           | R <sub>L</sub> = 50 Ω, C <sub>L</sub> = 35 pF<br>(Figures 4 and 5)                    | 2.5                    | 1.3                    |                          |     | 50  |        | 55  |         | 55   | ns  |
|                  |   |   | 3.0                    | 1.5                    |                          |     | 40  |        | 50  |         | 50   |     |
|                  |   |   | 5.0                    | 2.8                    |                          |     | 30  |        | 35  |         | 35   |     |
| t <sub>BBM</sub> | Minimum Break-Before-Make Time (Note 6) | V <sub>IS</sub> = 3.0<br>R <sub>L</sub> = 300 Ω, C <sub>L</sub> = 35 pF<br>(Figure 3) | 3.0                    | 1.5                    | 2                        | 15  |     |        |     |         |      | ns  |

|                     |                               | Typical @ 25, V <sub>CC</sub> = 5.0 V |  |  |  | Unit |
|---------------------|-------------------------------|---------------------------------------|--|--|--|------|
| C <sub>NC Off</sub> | NC Off Capacitance, f = 1 MHz | 102                                   |  |  |  |      |
| C <sub>NO Off</sub> | NO Off Capacitance, f = 1 MHz | 104                                   |  |  |  |      |
| C <sub>NC On</sub>  | NC On Capacitance, f = 1 MHz  | 322                                   |  |  |  |      |
| C <sub>NO On</sub>  | NO On Capacitance, f = 1 MHz  | 330                                   |  |  |  |      |

## ADDITIONAL APPLICATION CHARACTERISTICS (Voltages Referenced to GND Unless Noted)

| Symbol           | Parameter   | Condition   | V <sub>CC</sub><br>V | Typical | Unit |
|------------------|---|---|----------------------|---------|------|
|                  |   |   |                      | 25°C    |      |
| BW               | Maximum On-Channel -3dB Bandwidth or Minimum Frequency Response | V <sub>IN</sub> = 0 dBm<br>V <sub>IN</sub> centered between V <sub>CC</sub> and GND<br>(Figure 6)   | NC                   | 6.5     | MHz  |
|                  |   |   | NO                   | 9.5     |      |
| V <sub>ONL</sub> | Maximum Feed-through On Loss                                    | V <sub>IN</sub> = 0 dBm @ 100 kHz to 50 MHz<br>V <sub>IN</sub> centered between V <sub>CC</sub> and GND (Figure 6)  | 3.0                  | -0.05   | dB   |
| V <sub>ISO</sub> | Off-Channel Isolation (Note 7)                                  | f = 100 kHz; V <sub>IS</sub> = 1 V RMS; C <sub>L</sub> = 5 nF<br>V <sub>IN</sub> centered between V <sub>CC</sub> and GND (Figure 6)                        | 3.0                  | -65     | dB   |
| Q                | Charge Injection Select Input to Common I/O (Figures 10 and 11) | V <sub>IN</sub> = V <sub>CC</sub> to GND, R <sub>IS</sub> = 0 Ω, C <sub>L</sub> = 1 nF<br>Q = C <sub>L</sub> - ΔV <sub>OUT</sub> (Figure 7)                 | 3.0                  | 15      | pC   |
| THD              | Total Harmonic Distortion THD + Noise (Figure 9)                | F <sub>IS</sub> = 20 Hz to 100 kHz, R <sub>L</sub> = R <sub>gen</sub> = 600 Ω, C <sub>L</sub> = 50 pF<br>V <sub>IS</sub> = 1 V RMS                          | 3.0                  | 0.14    | %    |
| VCT              | Channel-to-Channel Crosstalk                                    | f = 100 kHz; V <sub>IS</sub> = 1 V RMS, C <sub>L</sub> = 5 pF, R <sub>L</sub> = 50 Ω<br>V <sub>IN</sub> centered between V <sub>CC</sub> and GND (Figure 6) | 3.0                  | -83     | dB   |

6. -55°C specifications are guaranteed by design.

7. Off-Channel Isolation = 20log10 (V<sub>com</sub>/V<sub>no</sub>) (See Figure 6).

# NLAS4684

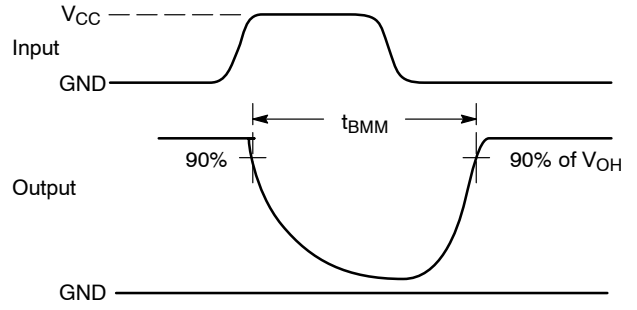
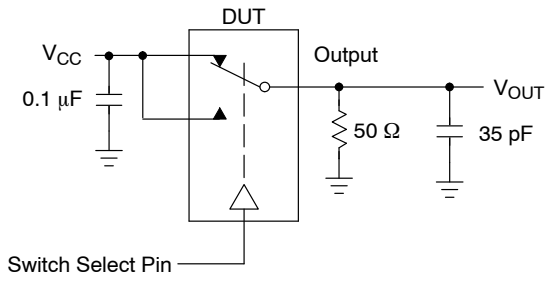


Figure 3.  $t_{BMM}$  (Time Break-Before-Make)

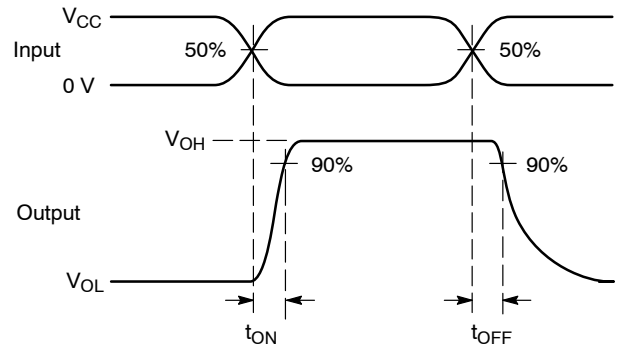
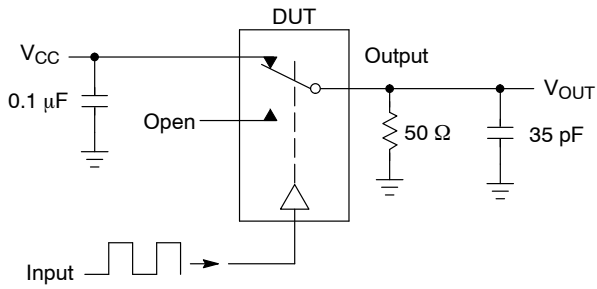


Figure 4.  $t_{ON}/t_{OFF}$

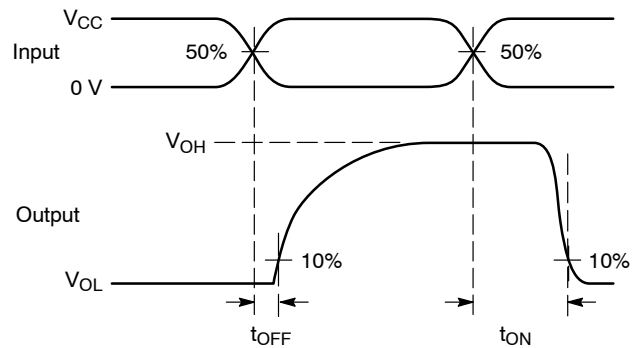
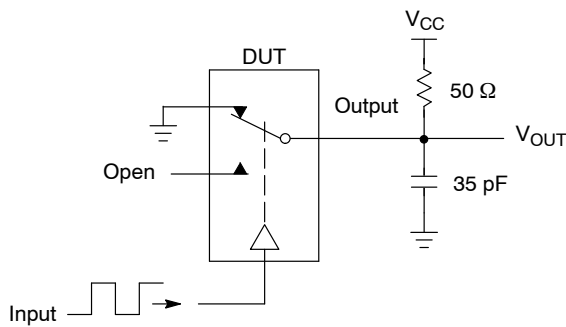
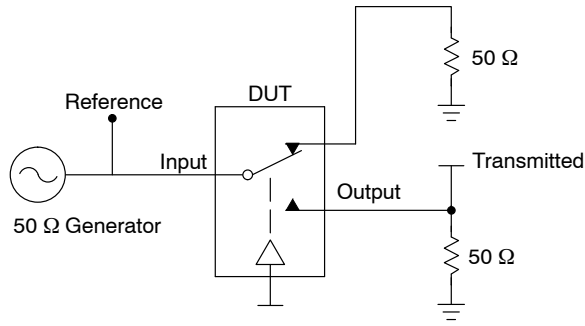


Figure 5.  $t_{ON}/t_{OFF}$

# NLAS4684



Channel switch control/s test socket is normalized. Off isolation is measured across an off channel. On loss is the bandwidth of an On switch.  $V_{ISO}$ , Bandwidth and  $V_{ONL}$  are independent of the input signal direction.

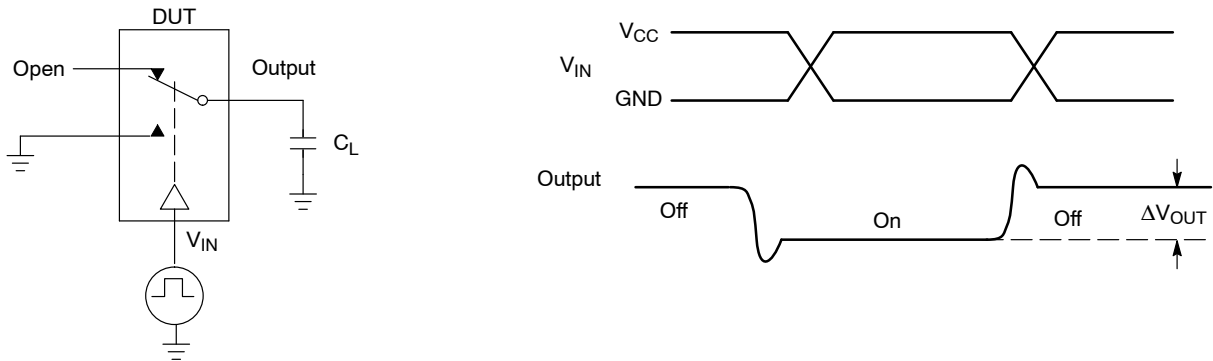
$$V_{ISO} = \text{Off Channel Isolation} = 20 \text{ Log} \left( \frac{V_{OUT}}{V_{IN}} \right) \text{ for } V_{IN} \text{ at } 100 \text{ kHz}$$

$$V_{ONL} = \text{On Channel Loss} = 20 \text{ Log} \left( \frac{V_{OUT}}{V_{IN}} \right) \text{ for } V_{IN} \text{ at } 100 \text{ kHz to } 50 \text{ MHz}$$

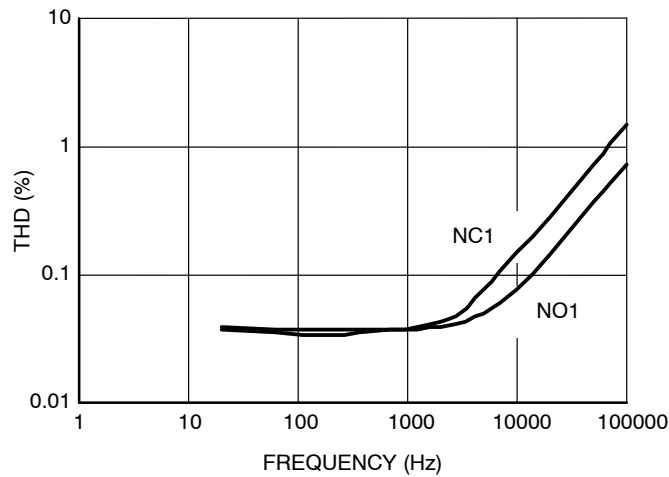
Bandwidth (BW) = the frequency 3 dB below  $V_{ONL}$

$V_{CT}$  = Use  $V_{ISO}$  setup and test to all other switch analog input/outputs terminated with 50  $\Omega$

**Figure 6. Off Channel Isolation/On Channel Loss (BW)/Crosstalk (On Channel to Off Channel)/ $V_{ONL}$**



**Figure 7. Charge Injection: (Q)**



**Figure 8. Total Harmonic Distortion Plus Noise Versus Frequency**

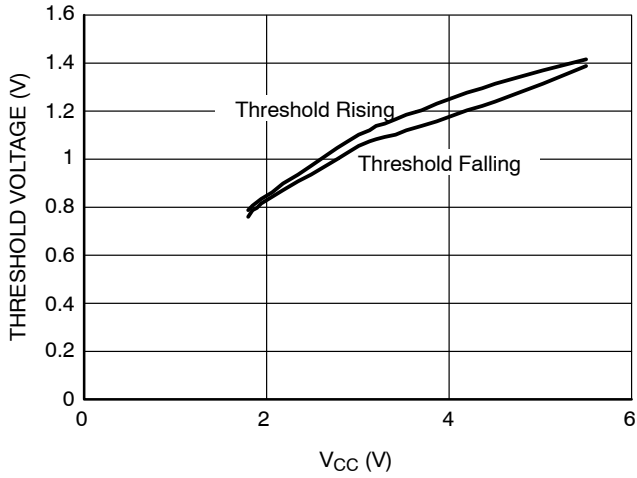


Figure 9. Voltage in Threshold on Logic Pins

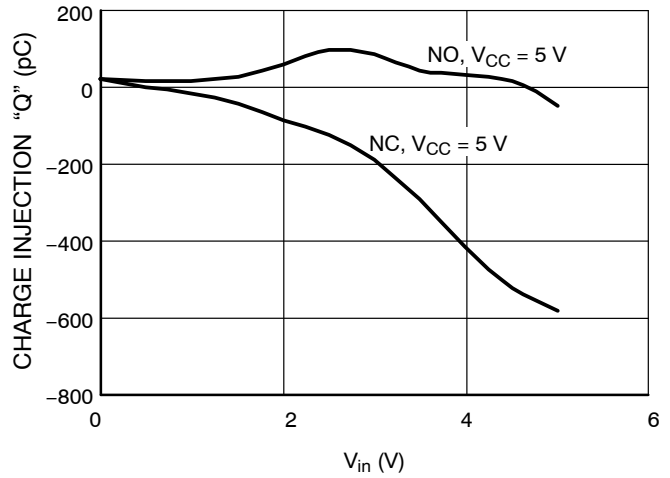


Figure 10. Charge Injection versus  $V_{IS}$

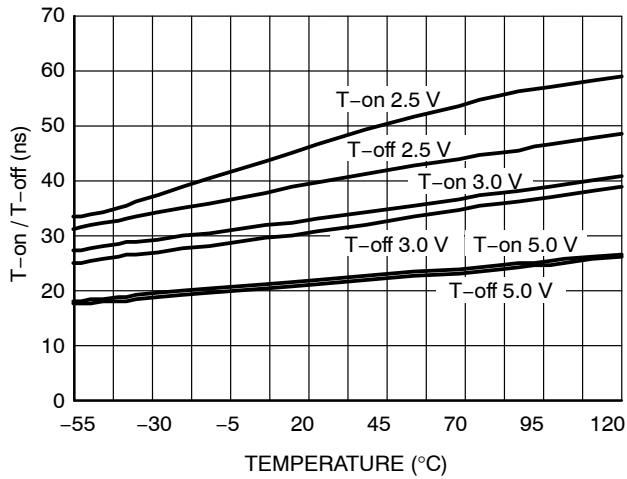


Figure 11. T-on / T-off Time versus Temperature

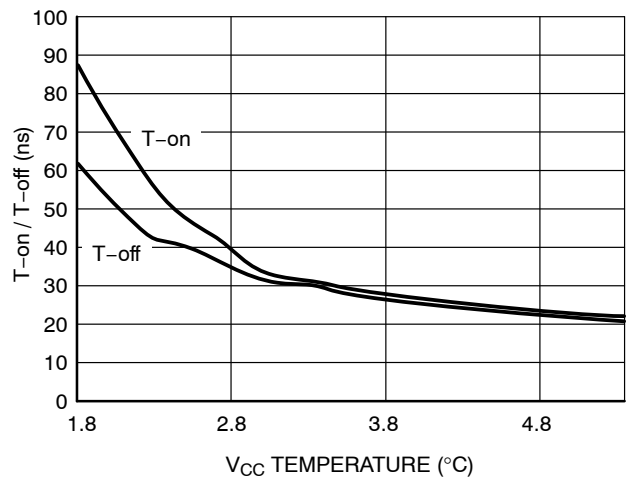


Figure 12. T-on / T-off Time versus Temperature

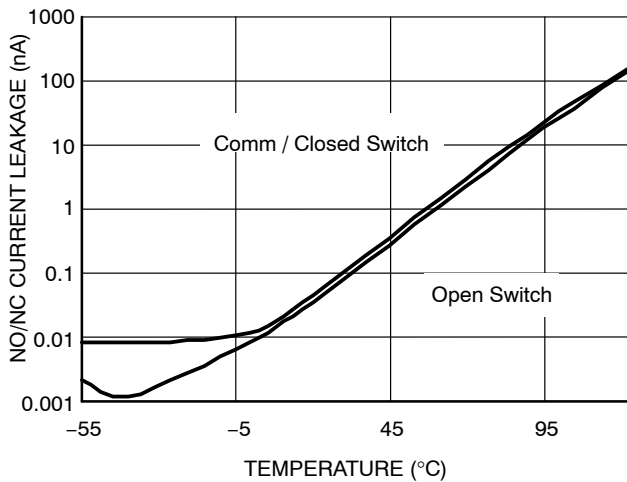


Figure 13. NO/NC Current Leakage Off and On,  $V_{CC} = 5 V$

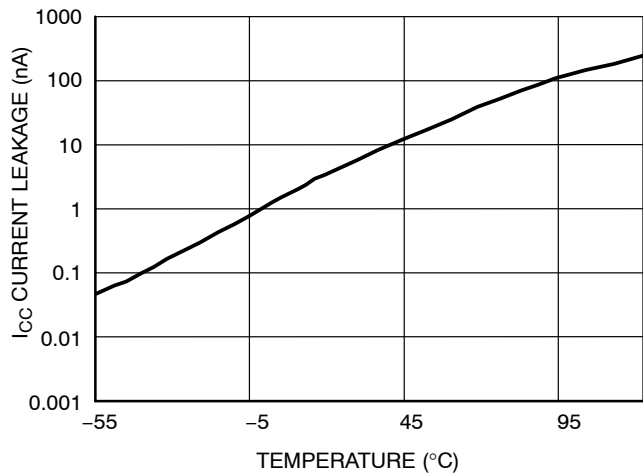


Figure 14.  $I_{CC}$  Current Leakage versus Temperature  $V_{CC} = 5.5 V$



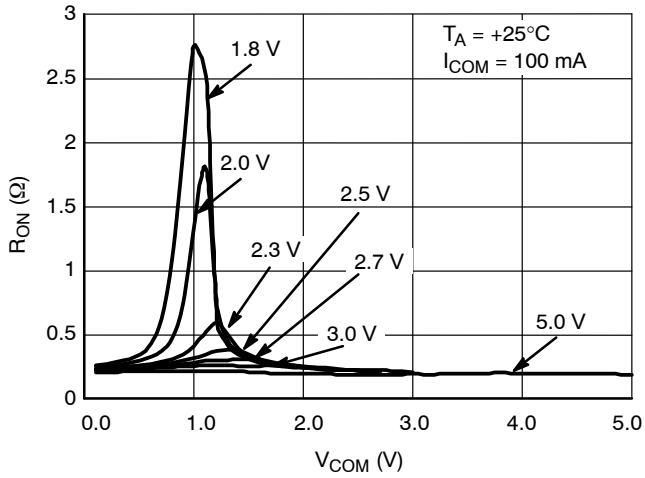


Figure 15. NC On-Resistance versus COM Voltage

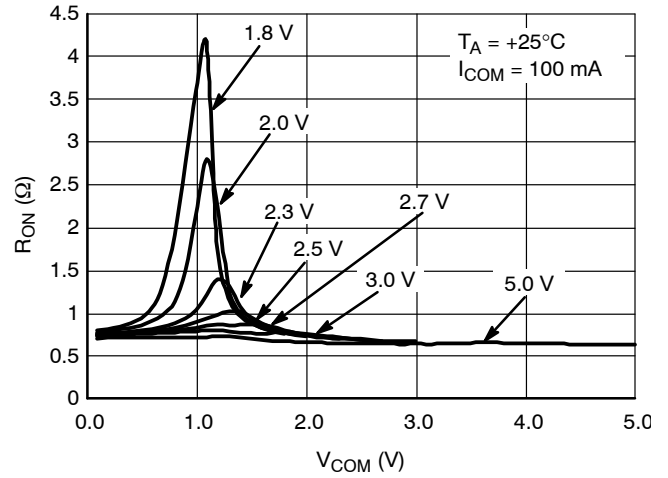


Figure 16. NO On-Resistance versus COM Voltage

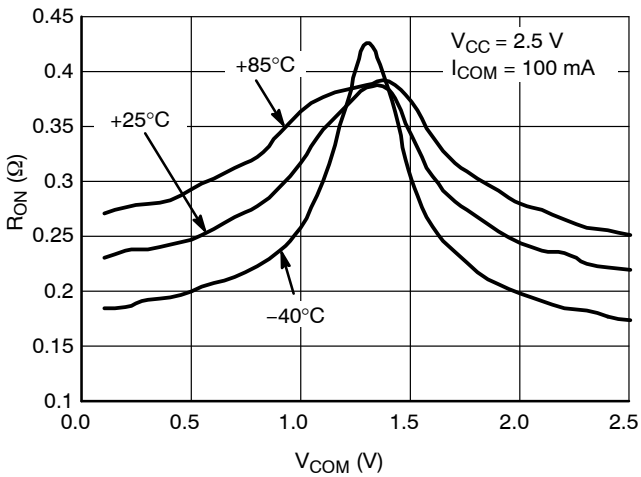


Figure 17. NC On-Resistance versus COM Voltage

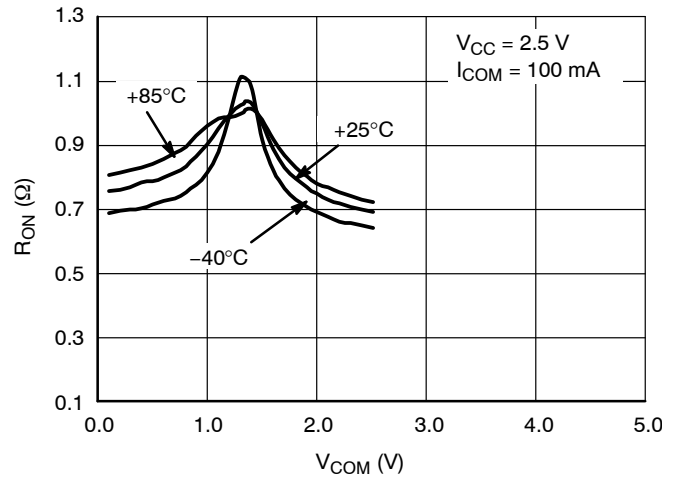


Figure 18. NO On-Resistance versus COM Voltage

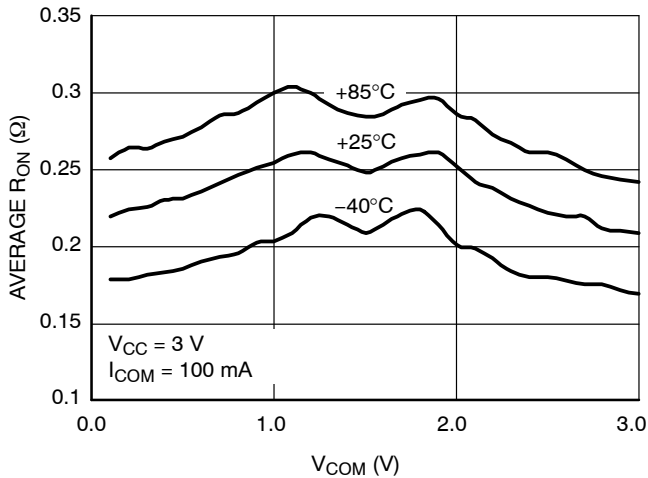


Figure 19. NC On-Resistance versus COM Voltage

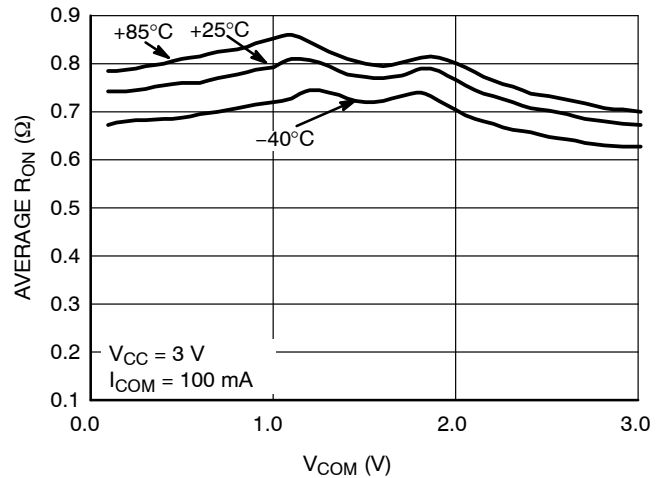


Figure 20. NC On-Resistance versus COM Voltage

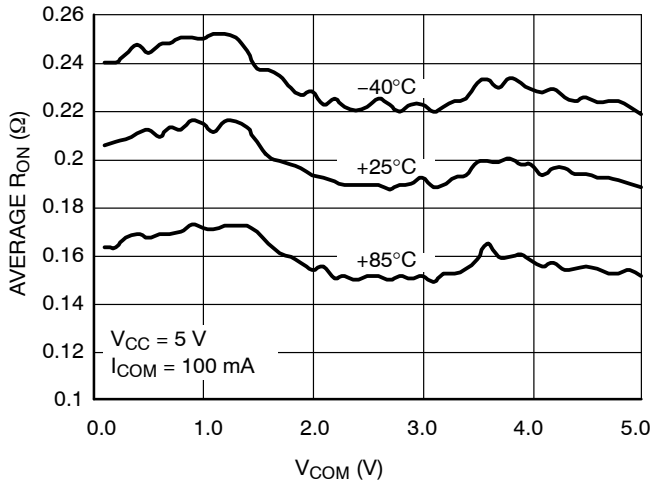


Figure 21. NC On-Resistance versus COM Voltage

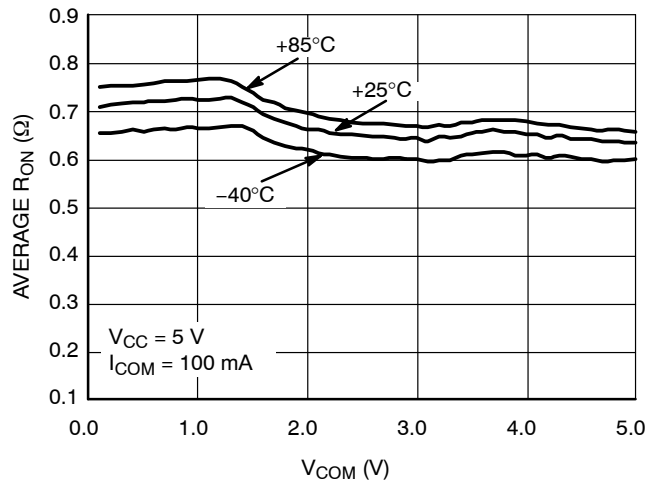


Figure 22. NO On-Resistance versus COM Voltage

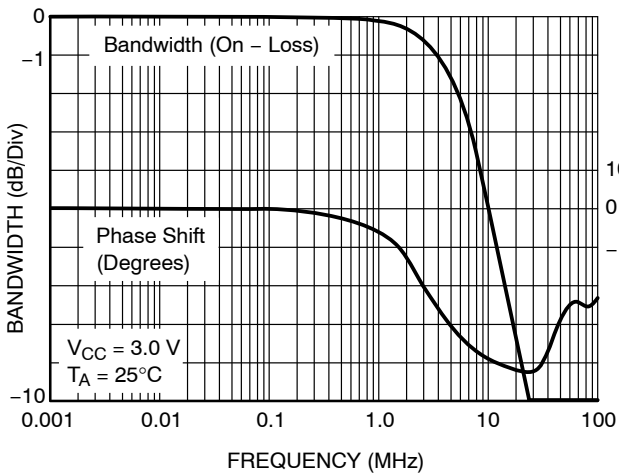


Figure 23. NC Bandwidth and Phase Shift versus Frequency

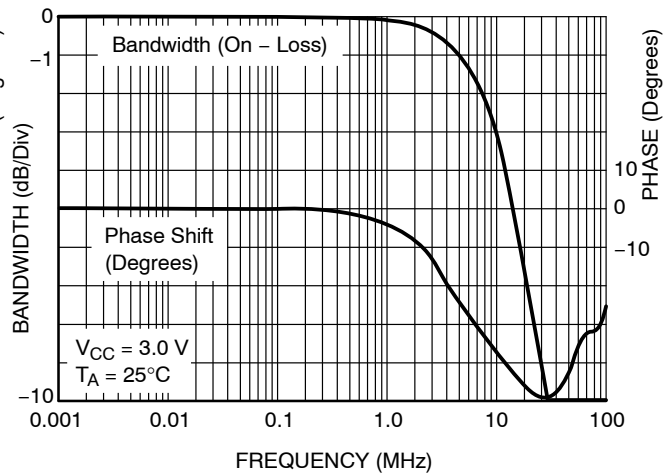


Figure 24. NO Bandwidth and Phase Shift versus Frequency

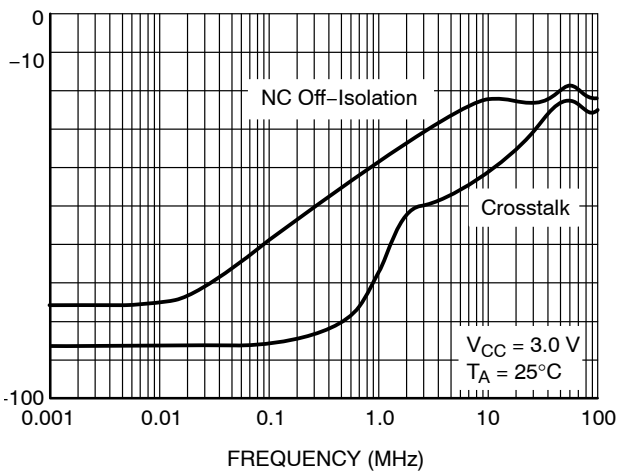


Figure 25. NC Off Isolation and Crosstalk

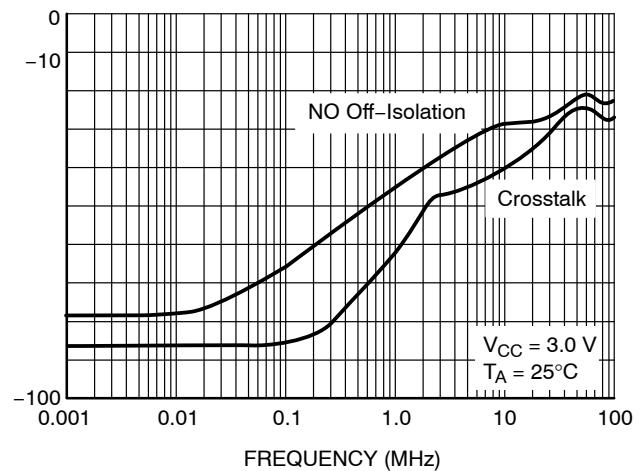


Figure 26. NO Off Isolation and Crosstalk

# NLAS4684

## ORDERING INFORMATION

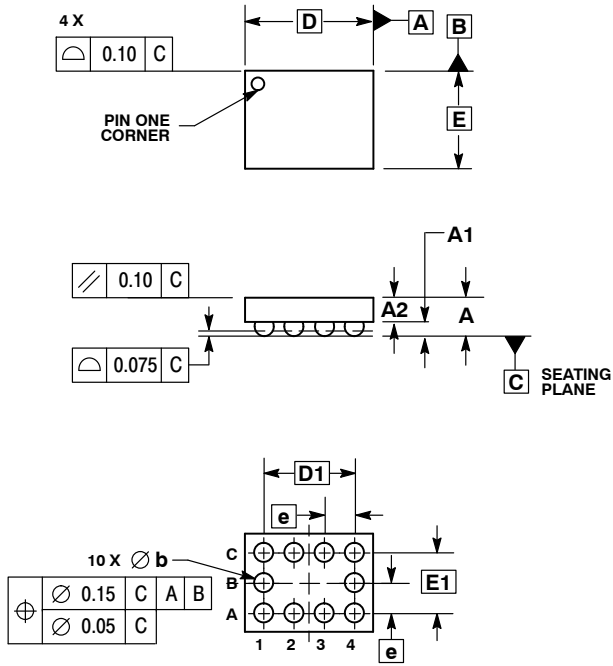
| Device        | Package                   | Shipping†          |
|---------------|---------------------------|--------------------|
| NLAS4684FCT1  | Microbump-10              | 3000 / Tape & Reel |
| NLAS4684FCT1G | Microbump-10<br>(Pb-Free) | 3000 / Tape & Reel |
| NLAS4684FCTCG | Microbump-10<br>(Pb-Free) | 3000 / Tape & Reel |
| NLAS4684MNR2  | DFN10                     | 3000 / Tape & Reel |
| NLAS4684MNR2G | DFN10<br>(Pb-Free)        | 3000 / Tape & Reel |
| NLAS4684MR2   | Micro10                   | 4000 / Tape & Reel |
| NLAS4684MR2G  | Micro10<br>(Pb-Free)      | 4000 / Tape & Reel |

†For information on tape and reel specifications, including part orientation and tape sizes, please refer to our Tape and Reel Packaging Specifications Brochure, BRD8011/D.

# NLAS4684

## PACKAGE DIMENSIONS

Microbump-10  
CASE 489AA-01  
ISSUE A



NOTES:

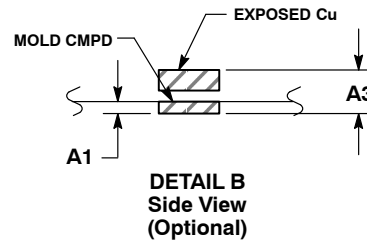
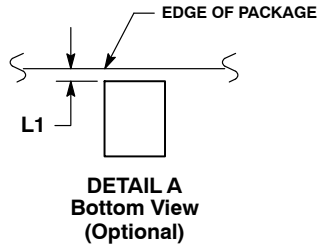
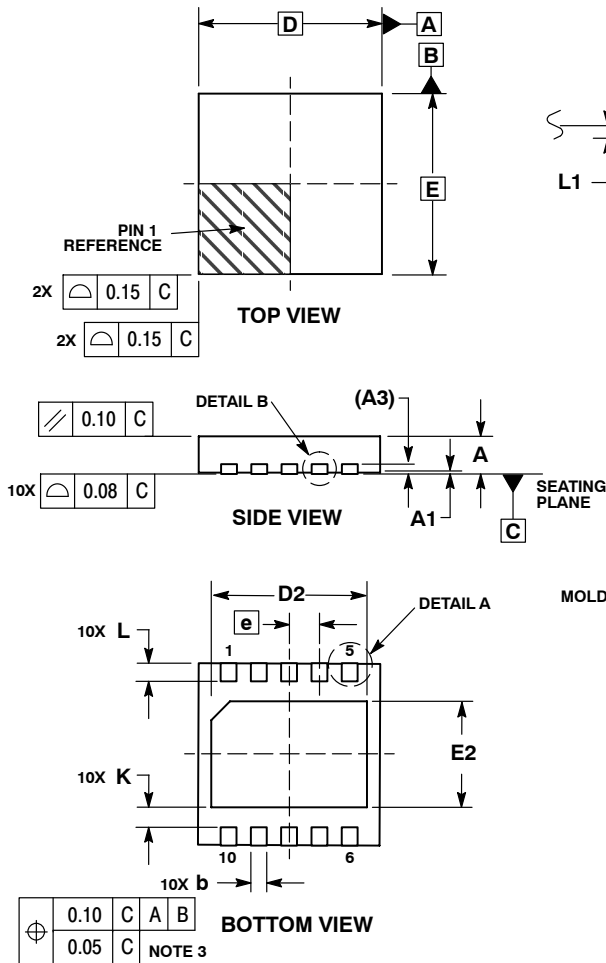
1. DIMENSIONING AND TOLERANCING PER ASME Y14.5M, 1994.
2. CONTROLLING DIMENSION: MILLIMETERS.
3. COPLANARITY APPLIES TO SPHERICAL CROWNS OF SOLDER BALLS.

| DIM | MILLIMETERS |       |
|-----|-------------|-------|
|     | MIN         | MAX   |
| A   | ---         | 0.650 |
| A1  | 0.210       | 0.270 |
| A2  | 0.280       | 0.380 |
| D   | 1.965 BSC   |       |
| E   | 1.465 BSC   |       |
| b   | 0.250       | 0.350 |
| e   | 0.500 BSC   |       |
| D1  | 1.500 BSC   |       |
| E1  | 1.000 BSC   |       |

# NLAS4684

## PACKAGE DIMENSIONS

DFN10, 3 x 3mm, 0.5mm Pitch  
CASE 485C-01  
ISSUE A

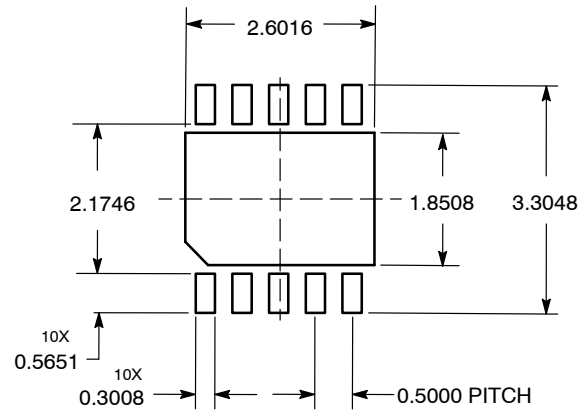


**NOTES:**

1. DIMENSIONING AND TOLERANCING PER ASME Y14.5M, 1994.
2. CONTROLLING DIMENSION: MILLIMETERS.
3. DIMENSION b APPLIES TO PLATED TERMINAL AND IS MEASURED BETWEEN 0.25 AND 0.30 MM FROM TERMINAL.
4. COPLANARITY APPLIES TO THE EXPOSED PAD AS WELL AS THE TERMINALS.
5. TERMINAL b MAY HAVE MOLD COMPOUND MATERIAL ALONG SIDE EDGE. MOLD FLASHING MAY NOT EXCEED 30 MICRONS ONTO BOTTOM SURFACE OF TERMINAL b.
6. DETAILS A AND B SHOW OPTIONAL VIEWS FOR END OF TERMINAL LEAD AT EDGE OF PACKAGE.

| DIM | MILLIMETERS |      |
|-----|-------------|------|
|     | MIN         | MAX  |
| A   | 0.80        | 1.00 |
| A1  | 0.00        | 0.05 |
| A3  | 0.20 REF    |      |
| b   | 0.18        | 0.30 |
| D   | 3.00 BSC    |      |
| D2  | 2.45        | 2.55 |
| E   | 3.00 BSC    |      |
| E2  | 1.75        | 1.85 |
| e   | 0.50 BSC    |      |
| K   | 0.19 TYP    |      |
| L   | 0.35        | 0.45 |
| L1  | 0.00        | 0.03 |

**SOLDERING FOOTPRINT\***



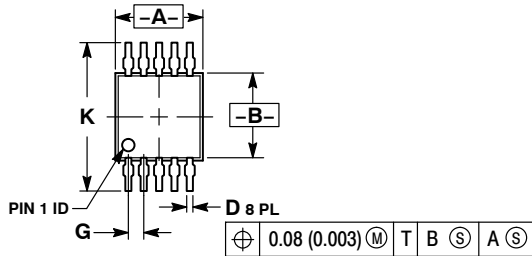
DIMENSIONS: MILLIMETERS

\*For additional information on our Pb-Free strategy and soldering details, please download the ON Semiconductor Soldering and Mounting Techniques Reference Manual, SOLDERRM/D.

# NLAS4684

## PACKAGE DIMENSIONS

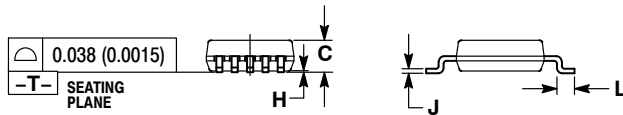
### Micro10 CASE 846B-03 ISSUE D



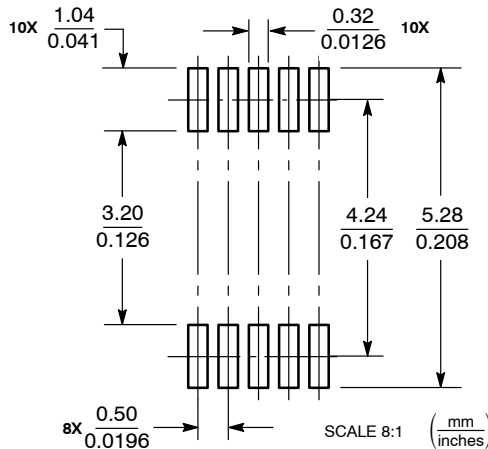
#### NOTES:

1. DIMENSIONING AND TOLERANCING PER ANSI Y14.5M, 1982.
2. CONTROLLING DIMENSION: MILLIMETER.
3. DIMENSION "A" DOES NOT INCLUDE MOLD FLASH, PROTRUSIONS OR GATE BURRS. MOLD FLASH, PROTRUSIONS OR GATE BURRS SHALL NOT EXCEED 0.15 (0.006) PER SIDE.
4. DIMENSION "B" DOES NOT INCLUDE INTERLEAD FLASH OR PROTRUSION. INTERLEAD FLASH OR PROTRUSION SHALL NOT EXCEED 0.25 (0.010) PER SIDE.
5. 846B-01 OBSOLETE. NEW STANDARD 846B-02

| DIM | MILLIMETERS |      | INCHES    |       |
|-----|-------------|------|-----------|-------|
|     | MIN         | MAX  | MIN       | MAX   |
| A   | 2.90        | 3.10 | 0.114     | 0.122 |
| B   | 2.90        | 3.10 | 0.114     | 0.122 |
| C   | 0.95        | 1.10 | 0.037     | 0.043 |
| D   | 0.20        | 0.30 | 0.008     | 0.012 |
| G   | 0.50 BSC    |      | 0.020 BSC |       |
| H   | 0.05        | 0.15 | 0.002     | 0.006 |
| J   | 0.10        | 0.21 | 0.004     | 0.008 |
| K   | 4.75        | 5.05 | 0.187     | 0.199 |
| L   | 0.40        | 0.70 | 0.016     | 0.028 |



#### SOLDERING FOOTPRINT\*



\*For additional information on our Pb-Free strategy and soldering details, please download the ON Semiconductor Soldering and Mounting Techniques Reference Manual, SOLDERRM/D.

ON Semiconductor and are registered trademarks of Semiconductor Components Industries, LLC (SCILLC). SCILLC reserves the right to make changes without further notice to any products herein. SCILLC makes no warranty, representation or guarantee regarding the suitability of its products for any particular purpose, nor does SCILLC assume any liability arising out of the application or use of any product or circuit, and specifically disclaims any and all liability, including without limitation special, consequential or incidental damages. "Typical" parameters which may be provided in SCILLC data sheets and/or specifications can and do vary in different applications and actual performance may vary over time. All operating parameters, including "Typicals" must be validated for each customer application by customer's technical experts. SCILLC does not convey any license under its patent rights nor the rights of others. SCILLC products are not designed, intended, or authorized for use as components in systems intended for surgical implant into the body, or other applications intended to support or sustain life, or for any other application in which the failure of the SCILLC product could create a situation where personal injury or death may occur. Should Buyer purchase or use SCILLC products for any such unintended or unauthorized application, Buyer shall indemnify and hold SCILLC and its officers, employees, subsidiaries, affiliates, and distributors harmless against all claims, costs, damages, and expenses, and reasonable attorney fees arising out of, directly or indirectly, any claim of personal injury or death associated with such unintended or unauthorized use, even if such claim alleges that SCILLC was negligent regarding the design or manufacture of the part. SCILLC is an Equal Opportunity/Affirmative Action Employer. This literature is subject to all applicable copyright laws and is not for resale in any manner.

#### PUBLICATION ORDERING INFORMATION

**LITERATURE FULFILLMENT:**  
Literature Distribution Center for ON Semiconductor  
P.O. Box 5163, Denver, Colorado 80217 USA  
**Phone:** 303-675-2175 or 800-344-3860 Toll Free USA/Canada  
**Fax:** 303-675-2176 or 800-344-3867 Toll Free USA/Canada  
**Email:** orderlit@onsemi.com

**N. American Technical Support:** 800-282-9855 Toll Free USA/Canada  
**Europe, Middle East and Africa Technical Support:**  
Phone: 421 33 790 2910  
**Japan Customer Focus Center**  
Phone: 81-3-5773-3850

**ON Semiconductor Website:** [www.onsemi.com](http://www.onsemi.com)  
**Order Literature:** <http://www.onsemi.com/orderlit>  
For additional information, please contact your local Sales Representative

Компания «Океан Электроники» предлагает заключение долгосрочных отношений при поставках импортных электронных компонентов на взаимовыгодных условиях!

Наши преимущества:

- Поставка оригинальных импортных электронных компонентов напрямую с производств Америки, Европы и Азии, а так же с крупнейших складов мира;
- Широкая линейка поставок активных и пассивных импортных электронных компонентов (более 30 млн. наименований);
- Поставка сложных, дефицитных, либо снятых с производства позиций;
- Оперативные сроки поставки под заказ (от 5 рабочих дней);
- Экспресс доставка в любую точку России;
- Помощь Конструкторского Отдела и консультации квалифицированных инженеров;
- Техническая поддержка проекта, помощь в подборе аналогов, поставка прототипов;
- Поставка электронных компонентов под контролем ВП;
- Система менеджмента качества сертифицирована по Международному стандарту ISO 9001;
- При необходимости вся продукция военного и аэрокосмического назначения проходит испытания и сертификацию в лаборатории (по согласованию с заказчиком);
- Поставка специализированных компонентов военного и аэрокосмического уровня качества (Xilinx, Altera, Analog Devices, Intersil, Interpoint, Microsemi, Actel, Aeroflex, Peregrine, VPT, Syfer, Eurofarad, Texas Instruments, MS Kennedy, Miteq, Cobham, E2V, MA-COM, Hittite, Mini-Circuits, General Dynamics и др.);

Компания «Океан Электроники» является официальным дистрибьютором и эксклюзивным представителем в России одного из крупнейших производителей разъемов военного и аэрокосмического назначения «JONHON», а так же официальным дистрибьютором и эксклюзивным представителем в России производителя высокотехнологичных и надежных решений для передачи СВЧ сигналов «FORSTAR».



## JONHON

«JONHON» (основан в 1970 г.)

Разъемы специального, военного и аэрокосмического назначения:

(Применяются в военной, авиационной, аэрокосмической, морской, железнодорожной, горно- и нефтедобывающей отраслях промышленности)

«FORSTAR» (основан в 1998 г.)

ВЧ соединители, коаксиальные кабели, кабельные сборки и микроволновые компоненты:

(Применяются в телекоммуникациях гражданского и специального назначения, в средствах связи, РЛС, а так же военной, авиационной и аэрокосмической отраслях промышленности).



Телефон: 8 (812) 309-75-97 (многоканальный)

Факс: 8 (812) 320-03-32

Электронная почта: [ocean@oceanchips.ru](mailto:ocean@oceanchips.ru)

Web: <http://oceanchips.ru/>

Адрес: 198099, г. Санкт-Петербург, ул. Калинина, д. 2, корп. 4, лит. А