

»» Features



- 20A/25A general purpose Power Relays.
- SPDT, DPDT, TPDT contact configurations.
- DC & AC coils are both available.
- Optional for flange covers, tapped core w/anti-rotation tab, indicator lamp, push-to-test button, PCB terminals
- Comply with RoHS-Directive 2002/95/EC.

»» Type List

◆ Standard Type

| Terminal style | Contact form | Enclosure style | | | | |
|----------------|--------------|-----------------|------------|---------------|------------------|-------------|
| | | Open type | Dust cover | Ears on cover | Antirotation-tab | Ears on top |
| Quick terminal | 1A (SPNO) | 735-1A | 735-1A-C | 735-1A-C1 | 735-1A-C2 | 735-1A-C3 |
| | 1B (SPNC) | 735-1B | 735-1B-C | 735-1B-C1 | 735-1B-C2 | 735-1B-C3 |
| | 1C (SPDT) | 735-1C | 735-1C-C | 735-1C-C1 | 735-1C-C2 | 735-1C-C3 |
| | 2A (DPNO) | 735-2A | 735-2A-C | 735-2A-C1 | 735-2A-C2 | 735-2A-C3 |
| | 2B (DPNC) | 735-2B | 735-2B-C | 735-2B-C1 | 735-2B-C2 | 735-2B-C3 |
| | 2C (DPDT) | 735-2C | 735-2C-C | 735-2C-C1 | 735-2C-C2 | 735-2C-C3 |
| | 3A (TPNO) | 735-3A | 735-3A-C | 735-3A-C1 | 735-3A-C2 | 735-3A-C3 |
| | 3B (TPNC) | 735-3B | 735-3B-C | 735-3B-C1 | 735-3B-C2 | 735-3B-C3 |
| | 3C (TPDT) | 735-3C | 735-3C-C | 735-3C-C1 | 735-3C-C2 | 735-3C-C3 |
| PCB terminal | 1A (SPNO) | ----- | 735-1A-C-T | ----- | ----- | ----- |
| | 1B (SPNC) | ----- | 735-1B-C-T | ----- | ----- | ----- |
| | 1C (SPDT) | ----- | 735-1C-C-T | ----- | ----- | ----- |
| | 2A (DPNO) | ----- | 735-2A-C-T | ----- | ----- | ----- |
| | 2B (DPNC) | ----- | 735-2B-C-T | ----- | ----- | ----- |
| | 2C (DPDT) | ----- | 735-2C-C-T | ----- | ----- | ----- |
| | 3A (TPNO) | ----- | 735-3A-C-T | ----- | ----- | ----- |
| | 3B (TPNC) | ----- | 735-3B-C-T | ----- | ----- | ----- |
| | 3C (TPDT) | ----- | 735-3C-C-T | ----- | ----- | ----- |

◆ High Power Type

| Terminal style | Contact form | Insulation system | Enclosure style | |
|----------------|--------------|-------------------|-----------------|---------------|
| | | | Dust cover | Ears on cover |
| Quick terminal | 1A (SPNO) | F | 735H-1A-F-C | 735H-1A-F-C1 |
| | 1B (SPNC) | | 735H-1B-F-C | 735H-1B-F-C1 |
| | 1C (SPDT) | | 735H-1C-F-C | 735H-1C-F-C1 |
| | 2A (DPNO) | | 735H-2A-F-C | 735H-2A-F-C1 |
| | 2B (DPNC) | | 735H-2B-F-C | 735H-2B-F-C1 |
| | 2C (DPDT) | | 735H-2C-F-C | 735H-2C-F-C1 |

Ordering Information

735 H - 2C - F - C1 - M
 1 2 3 4 5 6

- | | | | |
|----------|--------------------------------|----------|---|
| 1. 735 | -- Basic series designation | 4. Blank | -- Standard type |
| | | F | -- Class F |
| 2. Blank | -- Standard type | 5. Blank | -- Open type |
| H | -- High power type | C | -- With cover |
| 3. 1A | -- Single pole normally open | C1 | -- With mounting ears on cover |
| 1B | -- Single pole normally closed | C2 | -- With accessible mounting hole with anti-rotation tab |
| 1C | -- Single pole double throw | C3 | -- Mounting ears on top of cover |
| 2A | -- Double pole normally open | | |
| 2B | -- Double pole normally closed | | |
| 2C | -- Double pole double throw | 6. Blank | -- No special feature |
| 3A | -- Three pole normally open | M | -- With manual operator |
| 3B | -- Three pole normally closed | T | -- Printed circuit board terminals |
| 3C | -- Three pole double throw | L | -- Pilot lamp |

Contact Rating

| TYPE | 735 | | 735H |
|----------------|-------------------------|--------------------------------|-------------------------|
| | 1A, 1B, 1C, 2A, 2B, 2C | 3A, 3B, 3C | |
| Resistive load | 20A 240VAC 15A 28VDC | 20A 120VAC 15A 240VAC/28VDC | 30A 240VAC 15A 28VDC |

Coil Rating (DC)

◆Standard Type

| | Rated voltage (V) | Rated current ±10 % at 23°C (mA) | Coil resistance ±10 % at 23°C (Ω) | Max. continuous voltage at 50°C | Pick up voltage(Max) at 23°C | Drop out voltage(Min) at 23°C | Power consumption at rated voltage |
|----------|-------------------|----------------------------------|-----------------------------------|---------------------------------|------------------------------|-------------------------------|------------------------------------|
| SP DP | 6 | 188 | 32 | 160 % of rated voltage | 80 % of rated voltage | 10 % of rated voltage | approx. 1.2W |
| | 12 | 100 | 120 | | | | |
| | 24 | 51 | 472 | | | | |
| | 48 | 27 | 1800 | | | | |
| | 110 | 11 | 10000 | | | | |
| | 125 | 12.5 | 10000 | | | | |
| TP | 6 | 250 | 24 | 160 % of rated voltage | 80 % of rated voltage | 10 % of rated voltage | approx. 1.5W |
| | 12 | 125 | 96 | | | | |
| | 24 | 63 | 384 | | | | |
| | 48 | 31 | 1536 | | | | |
| | 110 | 11.5 | 9600 | | | | |
| | 125 | 13 | 9600 | | | | |



◆ High Power Type

| Rated voltage (V) | Rated current $\pm 10\%$ at 23°C (mA) | Coil resistance $\pm 10\%$ at 23°C (Ω) | Max. continuous voltage at 55°C | Pick up voltage(Max) at 23°C | Drop out voltage(Min) at 23°C | Power consumption at rated voltage |
|-------------------|---------------------------------------|---|---------------------------------|------------------------------|-------------------------------|------------------------------------|
| 6 | 188 | 32 | 160 % of rated voltage | 80 % of rated voltage | 10 % of rated voltage | approx. 1.2W |
| 12 | 100 | 120 | | | | |
| 24 | 51 | 472 | | | | |
| 48 | 27 | 1800 | | | | |
| 110 | 11 | 10000 | | | | |
| 125 | 12.5 | 10000 | | | | |

»» Coil Rating (AC)

◆ Standard Type

| Rated voltage (V) | Coil resistance $\pm 10\%$ at 23°C (Ω) | Max. continuous voltage at 50°C | Pick up voltage(Max) at 23°C | Drop out voltage(Min) at 23°C | Power consumption at rated voltage | |
|-------------------|---|---------------------------------|------------------------------|-------------------------------|------------------------------------|---------------|
| SP DP | 6 | 4.2 | 130 % of rated voltage | 85 % of rated voltage | 30 % of rated voltage | approx. 3.0VA |
| | 12 | 18 | | | | |
| | 24 | 72 | | | | |
| | 110 | 1580 | | | | |
| | 120 | 1700 | | | | |
| | 220 | 5850 | | | | |
| TP | 6 | 3.9 | 130 % of rated voltage | 85 % of rated voltage | 30 % of rated voltage | approx. 3.4VA |
| | 12 | 14.5 | | | | |
| | 24 | 64 | | | | |
| | 110 | 1450 | | | | |
| | 120 | 1540 | | | | |
| | 220 | 5850 | | | | |
| 240 | 6750 | | | | | |

◆ High Power Type

| Rated voltage (V) | Coil resistance $\pm 10\%$ at 23°C (Ω) | Max. continuous voltage at 55°C | Pick up voltage(Max) at 23°C | Drop out voltage(Min) at 23°C | Power consumption at rated voltage |
|-------------------|---|---------------------------------|------------------------------|-------------------------------|------------------------------------|
| 6 | 4.2 | 130 % of rated voltage | 85 % of rated voltage | 30 % of rated voltage | approx. 3.4VA |
| 12 | 18 | | | | |
| 24 | 72 | | | | |
| 110 | 1580 | | | | |
| 120 | 1700 | | | | |
| 220 | 5850 | | | | |
| 240 | 7200 | | | | |

»» Specification

| | | |
|--------------------------------------|---|---|
| Contact material | AgSnO alloy | |
| Contact resistance ⁽¹⁾ | 50 mΩ Max. (for 735) , 100 mΩ Max. (for 735H) | |
| Operate time ⁽¹⁾ | 25 ms Max. | |
| Release time ⁽¹⁾ | 20 ms Max. | |
| Insulation resistance ⁽¹⁾ | 1000 MΩ Min. (DC 500V) | |
| Dielectric strength ⁽¹⁾ | Between open contact | : AC 1000V, 50/60Hz 1 min. (for 735) : AC 1500V, 50/60Hz 1 min. (for 735H) |
| | Between contact and coil | : AC 1600V, 50/60Hz 1 min. (for 735) : AC 3000V, 50/60Hz 1 min. (for 735H) |
| | Between contact circuits | : AC 1600V, 50/60Hz 1 min. (for 735) : AC 3000V, 50/60Hz 1 min. (for 735H) |
| Vibration resistance | Operating extremes | 10~55Hz, amplitude 2.0 mm |
| | Damage limits | 10~55Hz, amplitude 2.0 mm |
| Shock resistance | Operating extremes | 10G |
| | Damage limits | 100G |
| Life expectancy | Mechanical | 10,000,000 operations (frequency 18,000 ops./hr) |
| | Electrical | 100,000 operations (frequency 1,200 ops./hr) (for 735) |
| | | NO: 30,000 operations NC: 10,000 operations (frequency 360 ops./hr) (for 735H) |
| Operating ambient temperature | -30~+50°C (no freezing) (for 735) -30~+55°C (no freezing) (for 735H) | |
| Weight | Approx. 80 g | |

Note : (1) initial value

»» Safety Approval

| Certified | 735 | | | 735H |
|-----------|--------|---------|-------|----------|
| | UL | CSA | FIMKO | UL / CUL |
| File No. | E88991 | 1664125 | 14426 | E88991 |

»» Safety Approval Rating (FIMKO)

| 735 1A, 1B, 1C | 735 2A, 2B, 2C | 735 3A, 3B, 3C |
|----------------|----------------|----------------|
| 25A 250VAC | 25A 250VAC | 20A 250VAC |

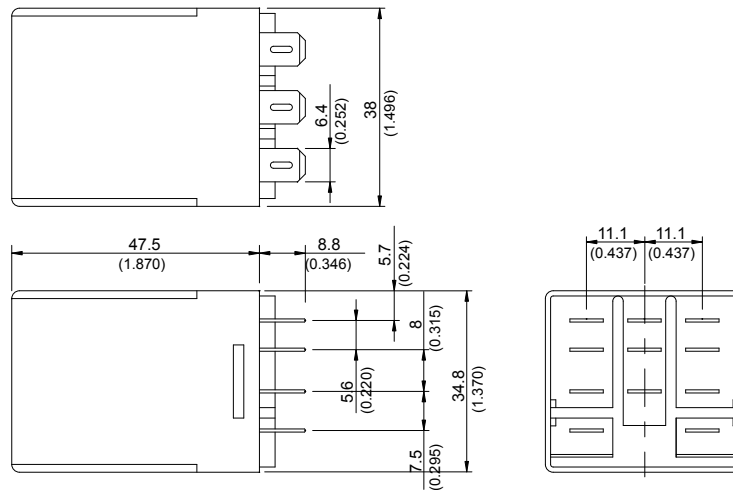
»» Safety Approval Rating(UL、CSA)

| UL | | | CSA | | |
|----------------|----------------|----------------|----------------|----------------|----------------|
| 735 1A, 1B, 1C | 735 2A, 2B, 2C | 735 3A, 3B, 3C | 735 1A, 1B, 1C | 735 2A, 2B, 2C | 735 3A, 3B, 3C |
| 25A 28VDC | 20A 28VDC | 15A 28VDC | 30A 277VAC | 25A 277VAC | 20A 277VAC |
| 25A 277VAC | 25A 277VAC | 20A 277VAC | 10A 600VAC | 10A 600VAC | 15A 28VDC |
| 10A 600VAC | 10A 600VAC | 3/4HP 120VAC | 25A 28VDC | 20A 28VDC | 3/4HP 120VAC |
| 1.5HP 240VAC | 1.5HP 240VAC | 1HP 240VAC | 1.5HP 240VAC | 1.5HP 240VAC | 1HP 240VAC |
| 1HP 120VAC | 1HP 120VAC | | 1HP 120VAC | 1HP 120VAC | |

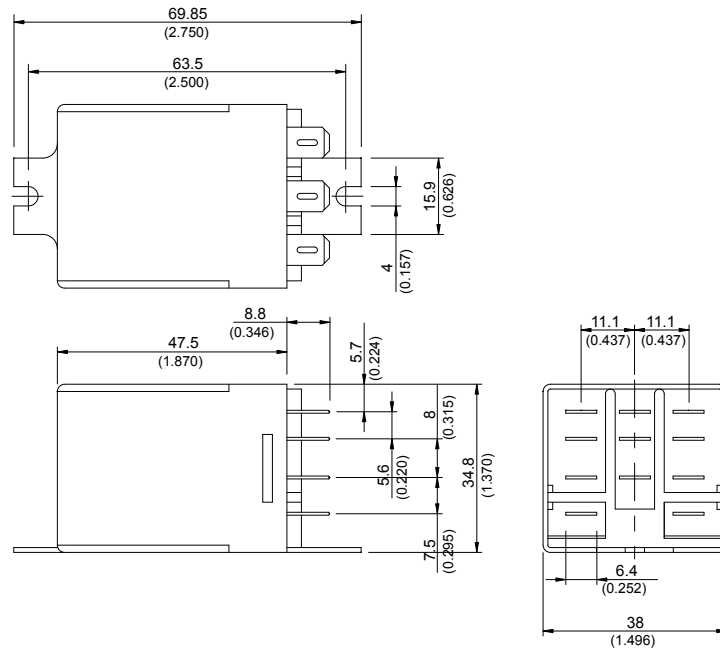
| UL / CUL | |
|-----------------|-----------------|
| 735H 1A, 1B, 1C | 735H 2A, 2B, 2C |
| 30A 277VAC | 30A 277VAC |
| 25A 28VDC | 20A 28VDC |
| 10A 600VAC | 10A 600VAC |
| 1.5HP 240VAC | 1.5HP 240VAC |
| 1HP 120VAC | 1HP 120VAC |

»» Outline Dimensions

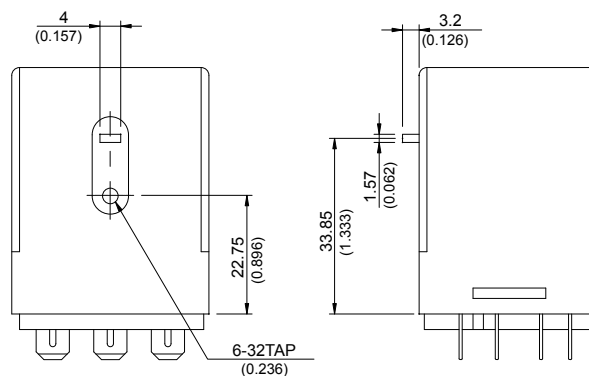
◆ 735 C



◆ 735 C1

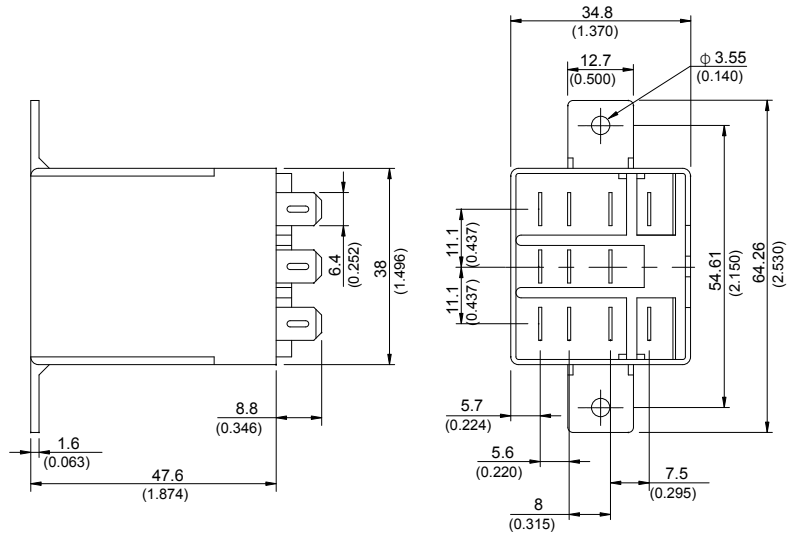


◆ 735 C2

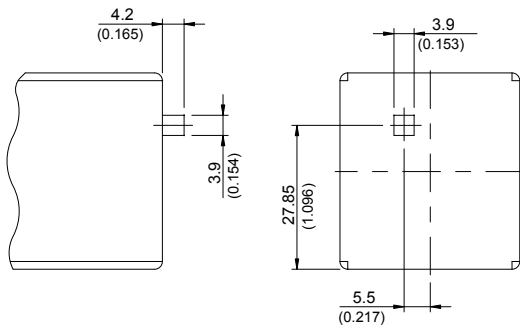


735

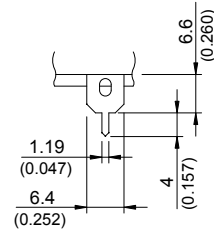
◆ 735 C3



◆ 735 M

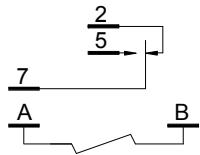


◆ 735 T

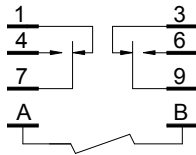


»» Wiring Diagram
BOTTOM VIEW

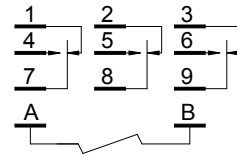
1C



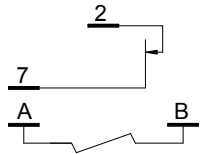
2C



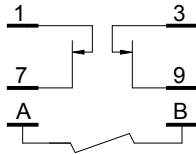
3C



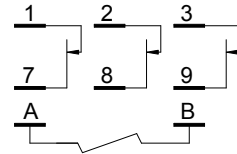
1B



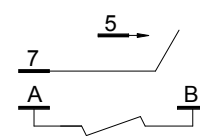
2B



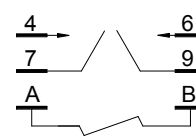
3B



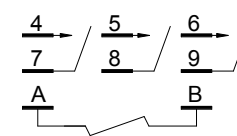
1A



2A

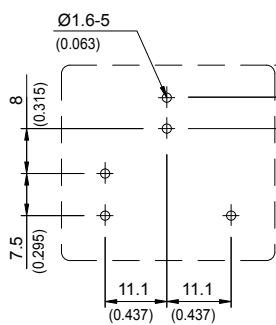


3A

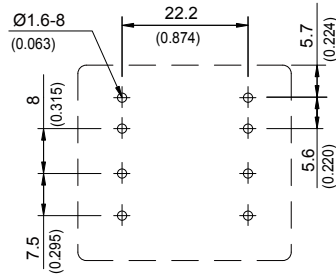


»» PC Board Layout BOTTOM VIEW

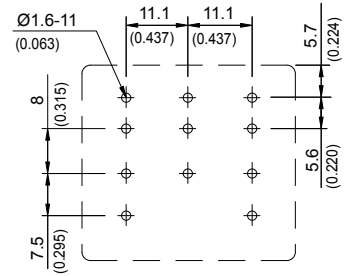
1P



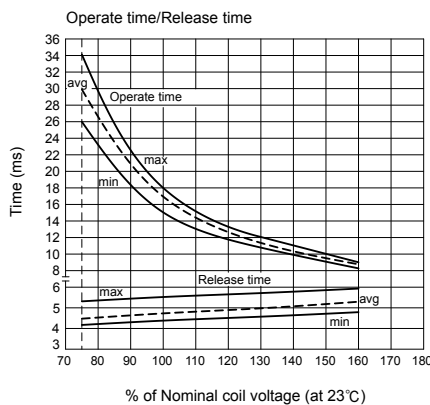
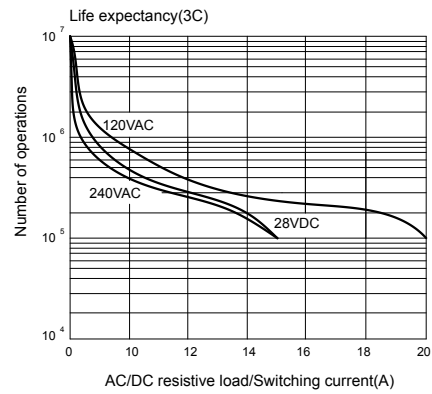
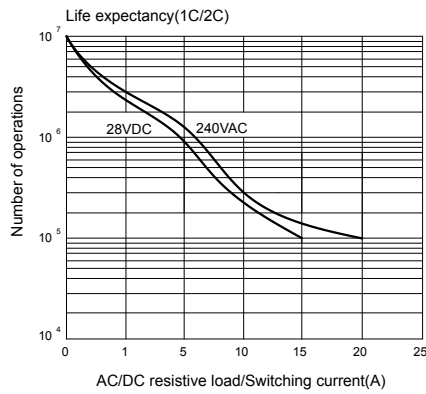
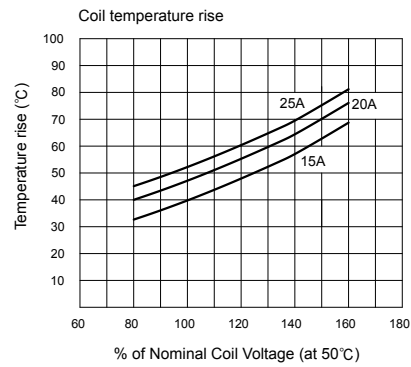
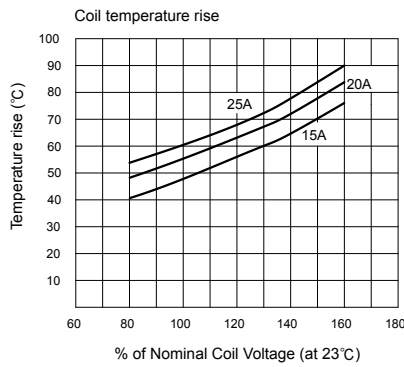
2P



3P



»» Engineering Data



Компания «Океан Электроники» предлагает заключение долгосрочных отношений при поставках импортных электронных компонентов на взаимовыгодных условиях!

Наши преимущества:

- Поставка оригинальных импортных электронных компонентов напрямую с производств Америки, Европы и Азии, а так же с крупнейших складов мира;
- Широкая линейка поставок активных и пассивных импортных электронных компонентов (более 30 млн. наименований);
- Поставка сложных, дефицитных, либо снятых с производства позиций;
- Оперативные сроки поставки под заказ (от 5 рабочих дней);
- Экспресс доставка в любую точку России;
- Помощь Конструкторского Отдела и консультации квалифицированных инженеров;
- Техническая поддержка проекта, помощь в подборе аналогов, поставка прототипов;
- Поставка электронных компонентов под контролем ВП;
- Система менеджмента качества сертифицирована по Международному стандарту ISO 9001;
- При необходимости вся продукция военного и аэрокосмического назначения проходит испытания и сертификацию в лаборатории (по согласованию с заказчиком);
- Поставка специализированных компонентов военного и аэрокосмического уровня качества (Xilinx, Altera, Analog Devices, Intersil, Interpoint, Microsemi, Actel, Aeroflex, Peregrine, VPT, Syfer, Eurofarad, Texas Instruments, MS Kennedy, Miteq, Cobham, E2V, MA-COM, Hittite, Mini-Circuits, General Dynamics и др.);

Компания «Океан Электроники» является официальным дистрибьютором и эксклюзивным представителем в России одного из крупнейших производителей разъемов военного и аэрокосмического назначения «JONHON», а так же официальным дистрибьютором и эксклюзивным представителем в России производителя высокотехнологичных и надежных решений для передачи СВЧ сигналов «FORSTAR».



JONHON

«JONHON» (основан в 1970 г.)

Разъемы специального, военного и аэрокосмического назначения:

(Применяются в военной, авиационной, аэрокосмической, морской, железнодорожной, горно- и нефтедобывающей отраслях промышленности)

«FORSTAR» (основан в 1998 г.)

ВЧ соединители, коаксиальные кабели,
кабельные сборки и микроволновые компоненты:

(Применяются в телекоммуникациях гражданского и специального назначения, в средствах связи, РЛС, а так же военной, авиационной и аэрокосмической отраслях промышленности).



Телефон: 8 (812) 309-75-97 (многоканальный)

Факс: 8 (812) 320-03-32

Электронная почта: ocean@oceanchips.ru

Web: <http://oceanchips.ru/>

Адрес: 198099, г. Санкт-Петербург, ул. Калинина, д. 2, корп. 4, лит. А