

NCP336, NCP337

3 A Ultra-Small Controlled Load Switch with Auto-Discharge Path

Description

The NCP336 and NCP337 are very low R_{on} MOSFET controlled by external logic pin, allowing optimization of battery life, and portable device autonomy.

Indeed, thanks to a current consumption optimization with PMOS structure, leakage currents are eliminated by isolating connected IC on the battery when not used.

Output discharge path is also embedded to eliminate residual voltages on the output rail for the NCP337 part only.

Proposed in a wide input voltage range from 1.2 V to 5.5 V, in a small 1 x 1.5 mm WLCSP6, pitch 0.5 mm.

Features

- 1.2 V – 5.5 V Operating Range
- 21 m Ω P MOSFET at 4.5 V
- DC Current up to 3 A
- Output Auto-Discharge
- Active High EN Pin
- WLCSP6 1 x 1.5 mm
- This Device is Pb-Free, Halogen Free/BFR Free and is RoHS Compliant

Applications

- Mobile Phones
- Tablets
- Digital Cameras
- GPS
- Portable Devices

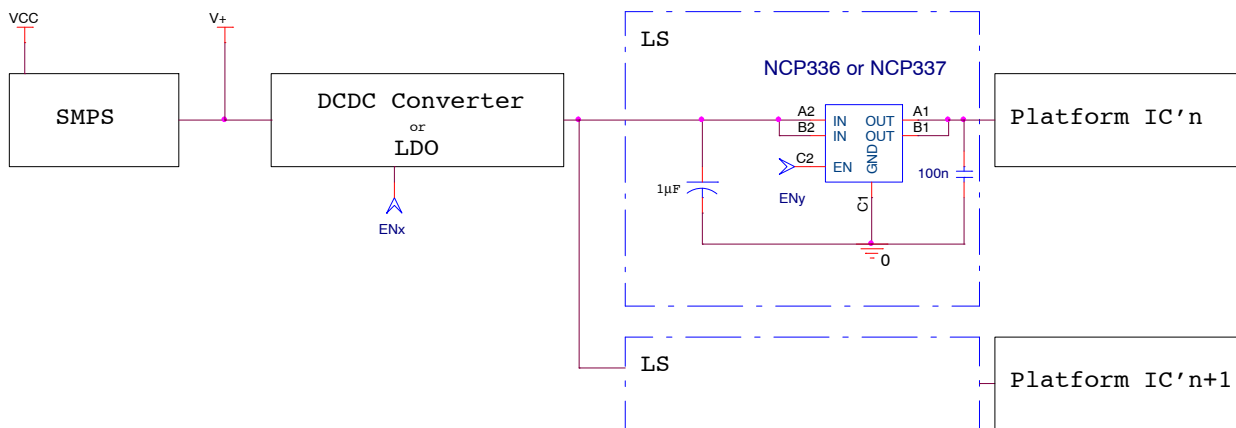


Figure 1. Typical Application Circuit



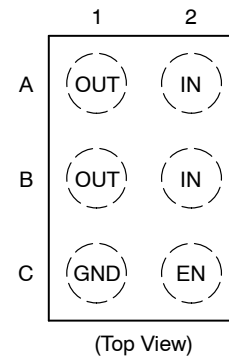
ON Semiconductor®

<http://onsemi.com>



WLCSP6
FC SUFFIX
CASE 567FH

PIN CONNECTIONS



ORDERING INFORMATION

See detailed ordering and shipping information on page 8 of this data sheet.

NCP336, NCP337

Table 1. PIN FUNCTION DESCRIPTION

| Pin Name | Pin Number | Type | Description |
|----------|------------|--------|--|
| IN | A2, B2 | POWER | Load-switch input voltage; connect a 1 μ F or greater ceramic capacitor from IN to GND as close as possible to the IC. |
| GND | C1 | POWER | Ground connection. |
| EN | C2 | INPUT | Enable input, logic high turns on power switch. |
| OUT | A1, B1 | OUTPUT | Load-switch output; connect a 1 μ F ceramic capacitor from OUT to GND as close as possible to the IC is recommended. |

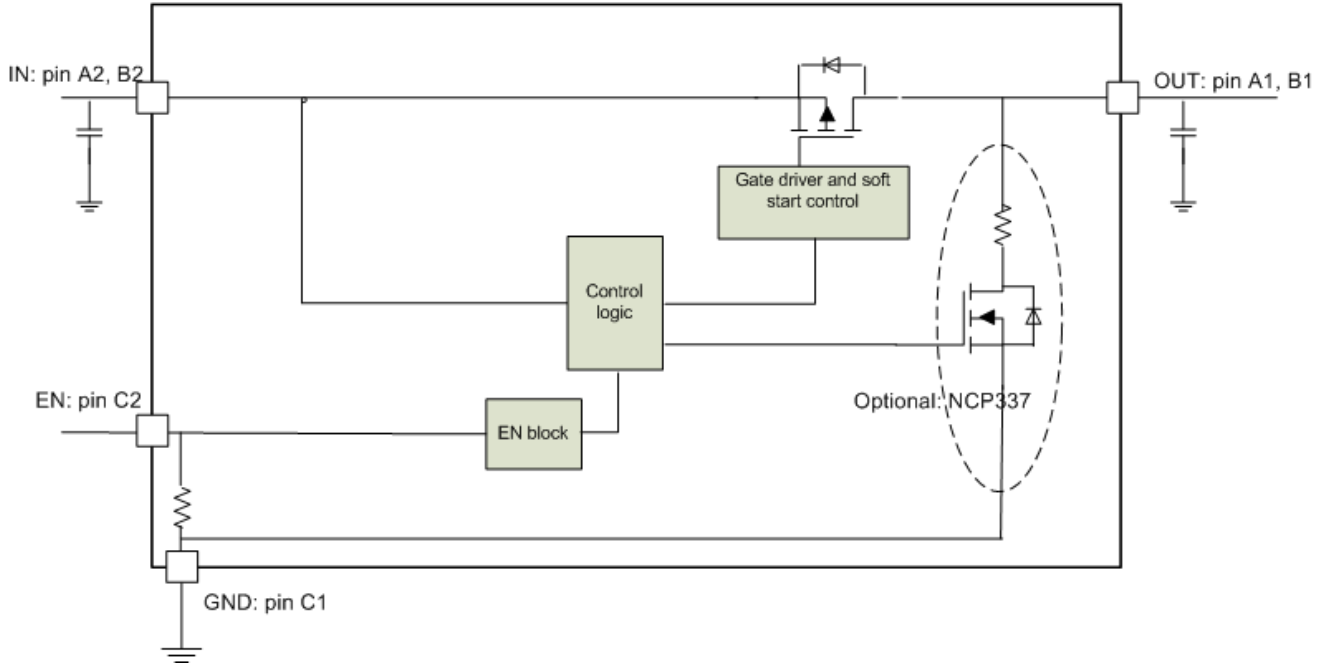


Figure 2. Block Diagram

NCP336, NCP337

Table 2. MAXIMUM RATINGS

| Rating | Symbol | Value | Unit |
|--|---------------------------|---------------|------|
| IN, OUT, EN, Pins: (Note 1) | V_{EN}, V_{IN}, V_{OUT} | -0.3 to + 7.0 | V |
| From IN to OUT Pins: Input/Output (Note 1) | V_{IN}, V_{OUT} | 0 to + 7.0 | V |
| Maximum Junction Temperature | T_J | -40 to + 125 | °C |
| Storage Temperature Range | T_{STG} | -40 to + 150 | °C |
| Moisture Sensitivity (Note 2) | MSL | Level 1 | |

Stresses exceeding Maximum Ratings may damage the device. Maximum Ratings are stress ratings only. Functional operation above the Recommended Operating Conditions is not implied. Extended exposure to stresses above the Recommended Operating Conditions may affect device reliability.

Table 3. OPERATING CONDITIONS

| Symbol | Parameter | Conditions | Min | Typ | Max | Unit | |
|-----------------|------------------------------------|-----------------------------|---------------|-----|------|------|---|
| V_{IN} | Operational Power Supply | | 1.2 | | 5.5 | V | |
| V_{EN} | Enable Voltage | | 0 | | 5.5 | | |
| T_A | Ambient Temperature Range | | -40 | 25 | +85 | °C | |
| T_J | Junction Temperature Range | | -40 | 25 | +125 | °C | |
| C_{IN} | Decoupling input capacitor | | 1 | | | μF | |
| C_{OUT} | Decoupling output capacitor | | 1 | | | μF | |
| $R_{\theta JA}$ | Thermal Resistance Junction to Air | WLCSP package (Note 3) | | 100 | | °C/W | |
| I_{OUT} | Maximum DC current | | | | 3 | A | |
| P_D | Power Dissipation Rating (Note 4) | $T_A \leq 25^\circ\text{C}$ | WLCSP package | | 0.66 | | W |
| | | $T_A = 85^\circ\text{C}$ | WLCSP package | | 0.26 | | W |

1. According to JEDEC standard JESD22-A108.
2. Moisture Sensitivity Level (MSL): 1 per IPC/JEDEC standard: J-STD-020.
3. The $R_{\theta JA}$ is dependent of the PCB heat dissipation and thermal via.
4. The maximum power dissipation (P_D) is given by the following formula:

$$P_D = \frac{T_{JMAX} - T_A}{R_{\theta JA}}$$

NCP336, NCP337

Table 4. ELECTRICAL CHARACTERISTIC Min & Max Limits apply for T_A between -40°C to $+85^{\circ}\text{C}$ for V_{IN} between 1.2 V to 5.5 V (Unless otherwise noted). Typical values are referenced to $T_A = +25^{\circ}\text{C}$ and $V_{IN} = 5\text{ V}$ (Unless otherwise noted).

| Symbol | Parameter | Conditions | | Min | Typ | Max | Unit |
|---------------------|---|-------------------------|--|-----|-----|-----|------------------|
| POWER SWITCH | | | | | | | |
| R_{DSON} | Static drain-source on-state resistance | $V_{in} = 5.5\text{ V}$ | $I = 1\text{ A}$ (Note 5) | | 20 | 22 | $\text{m}\Omega$ |
| | | $V_{in} = 4.5\text{ V}$ | $I = 500\text{ mA}$ (Note 5) | | 21 | 25 | |
| | | $V_{in} = 3.3\text{ V}$ | $I = 500\text{ mA}$ (Note 5) | | 23 | 28 | |
| | | $V_{in} = 2.5\text{ V}$ | $I = 500\text{ mA}$ (Note 5) | | 28 | 35 | |
| | | $V_{in} = 1.8\text{ V}$ | $I = 250\text{ mA}$ (Note 5) | | 40 | 45 | |
| | | $V_{in} = 1.2\text{ V}$ | $T_A = 25^{\circ}\text{C}$, $I = 200\text{ mA}$ | | 95 | 120 | |
| R_{dis} | Output discharge path | $EN = \text{low}$ | | | 70 | 90 | Ω |
| V_{IH} | High-level input voltage | | | 0.9 | | | V |
| V_{IL} | Low-level input voltage | | | | | 0.5 | |
| R_{pd} | EN pull down resistor | | | | 5 | | $\text{M}\Omega$ |

QUIESCENT CURRENT

| | | | | | | | |
|-----------|-------------------|-------------------------|------------------------------|--|--|---|---------------|
| I_{std} | Standby current | $V_{in} = 4.2\text{ V}$ | $EN = \text{low}$, No load | | | 1 | μA |
| I_q | Quiescent current | $V_{in} = 4.2\text{ V}$ | $EN = \text{high}$, No load | | | 1 | μA |

TIMINGS

| | | | | | | | |
|----------|----------------------------|-------------------------------------|---|--|------|--|---------------|
| T_{EN} | Enable time | $V_{in} = 3.6\text{ V}$ (Note 6) | $R_L = 25\ \Omega$, $C_{out} = 1\ \mu\text{F}$ | | 323 | | μs |
| T_R | Output rise time | | $R_L = 25\ \Omega$, $C_{out} = 1\ \mu\text{F}$ | | 810 | | |
| T_{ON} | ON time ($T_{EN} + T_R$) | | $R_L = 25\ \Omega$, $C_{out} = 1\ \mu\text{F}$ | | 1130 | | |
| T_F | Output fall time | | NCP337. $R_L = 25\ \Omega$, $C_{out} = 1\ \mu\text{F}$ | | 42 | | |

5. Guaranteed by design and characterization

6. Parameters are guaranteed for C_{LOAD} and R_{LOAD} connected to the OUT pin with respect to the ground

TIMINGS

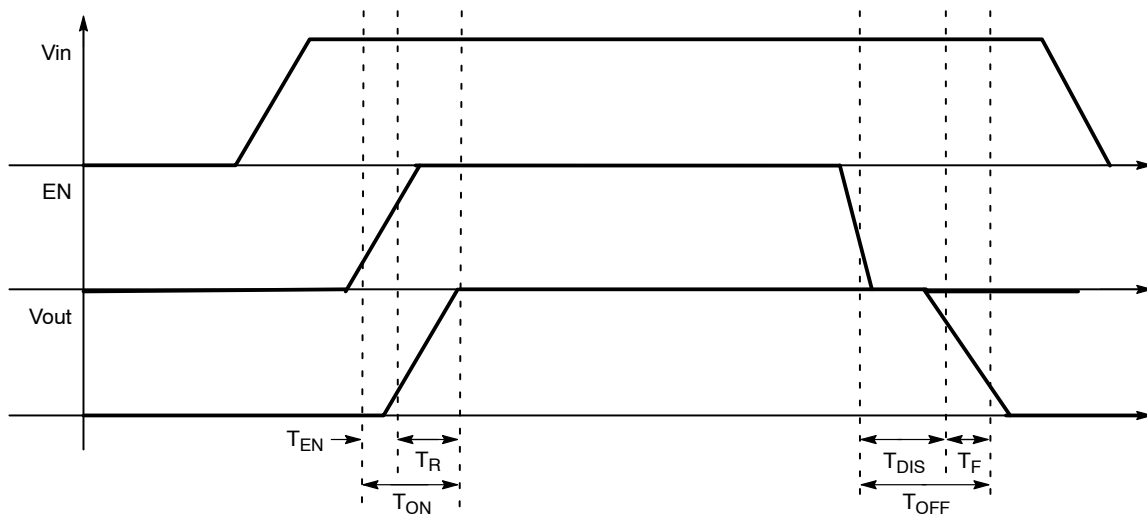


Figure 3. Enable, Rise and Fall Time

NCP336, NCP337

TYPICAL CHARACTERISTICS

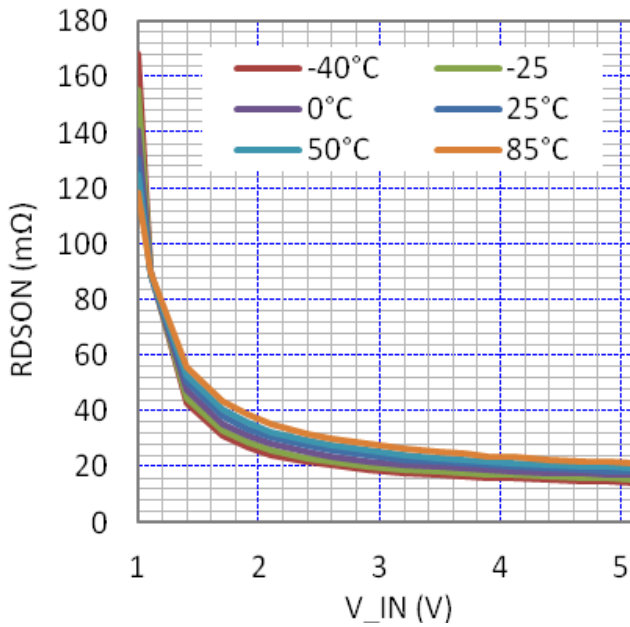


Figure 4. Rdson (mΩ) vs. Vin (V)

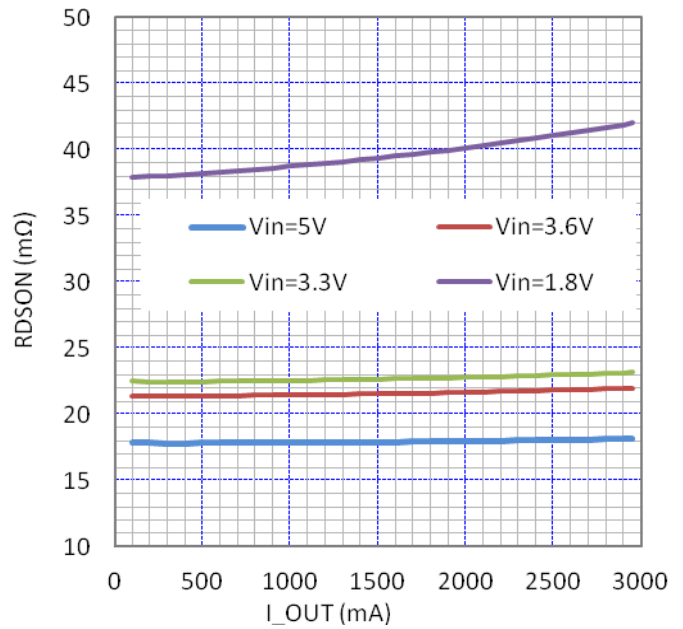


Figure 5. Rdson (mΩ) vs. Iload (A)

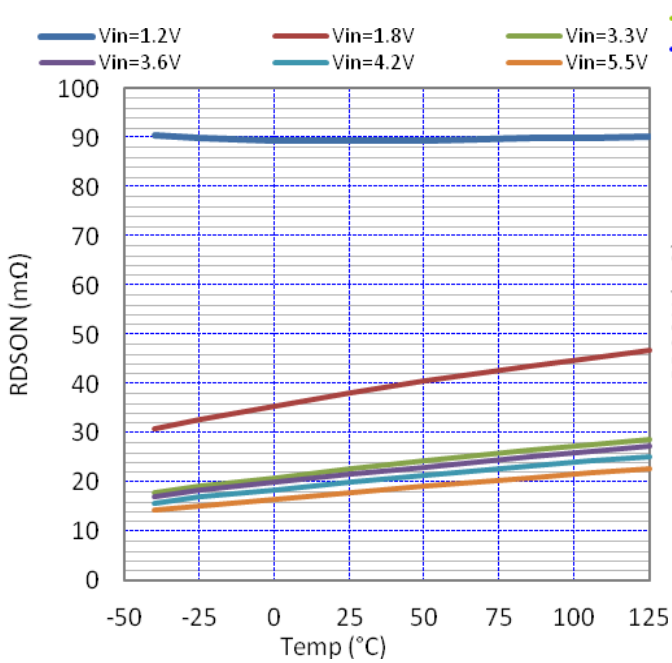


Figure 6. Rdson (mΩ) vs. Temperature (°C) at 100 mA

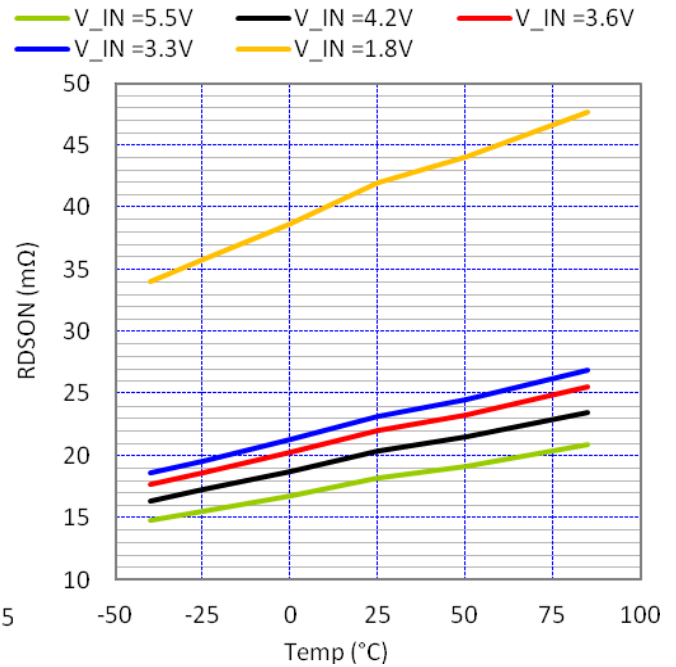


Figure 7. Rdson (mΩ) vs. Temperature (°C) at 3 A

TYPICAL CHARACTERISTICS

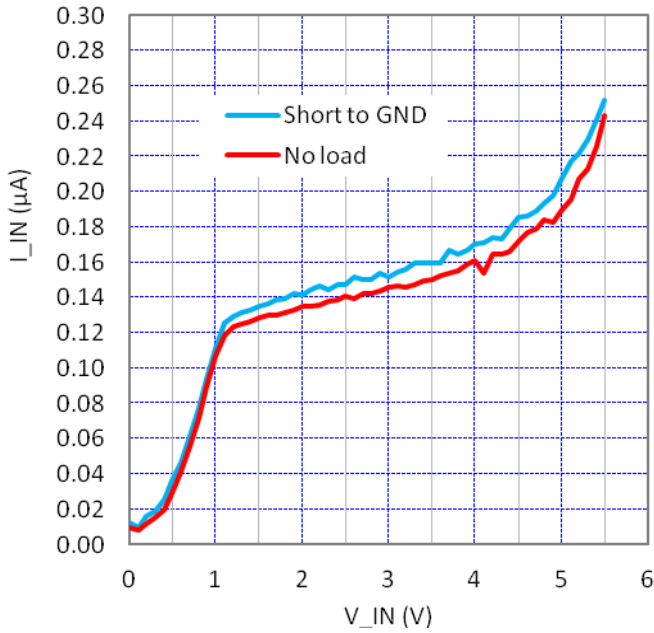


Figure 8. Standby (μA) and Leakage Current (μA) vs. V_{in} (V)

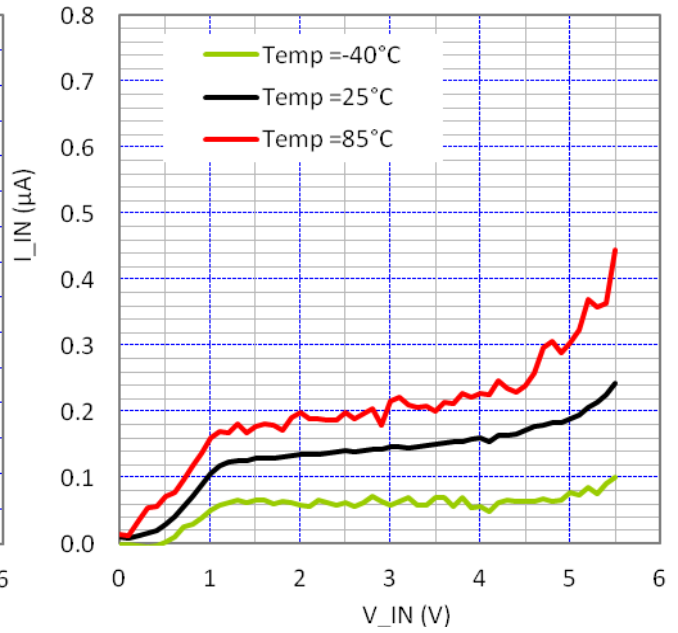


Figure 9. Standby Current (μA) vs. Temperature ($^{\circ}\text{C}$)

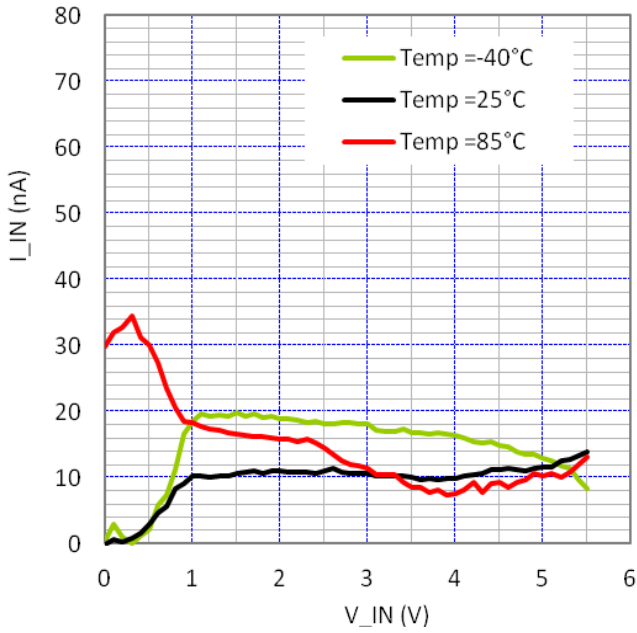


Figure 10. Leakage Current (μA) vs. Temperature ($^{\circ}\text{C}$)

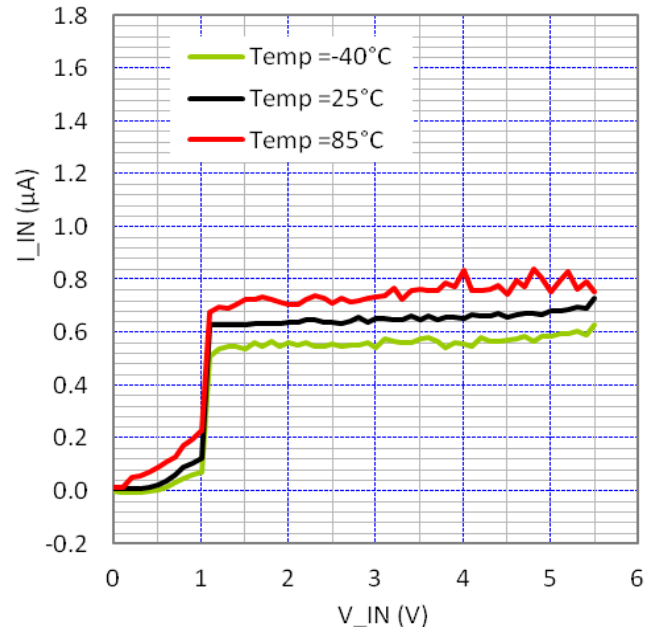


Figure 11. Quiescent Current (μA) vs. Temperature ($^{\circ}\text{C}$)

NCP336, NCP337

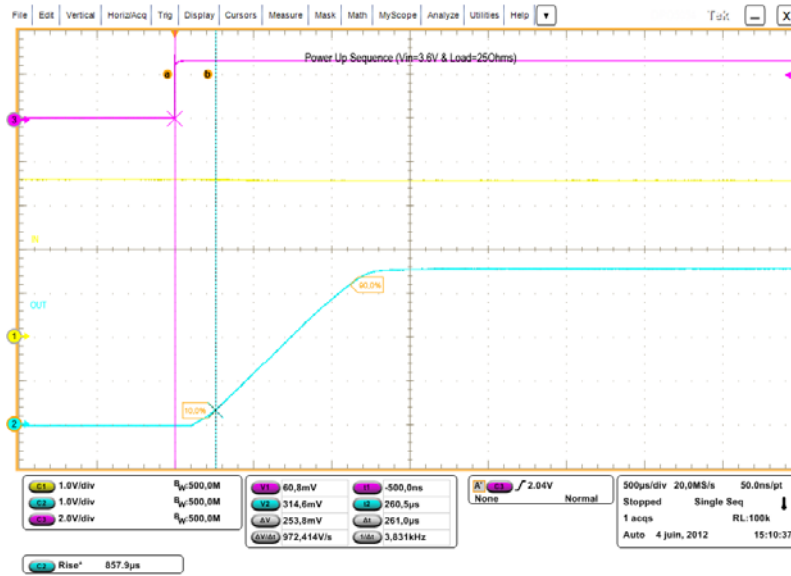


Figure 12. Enable Time and Rise Time

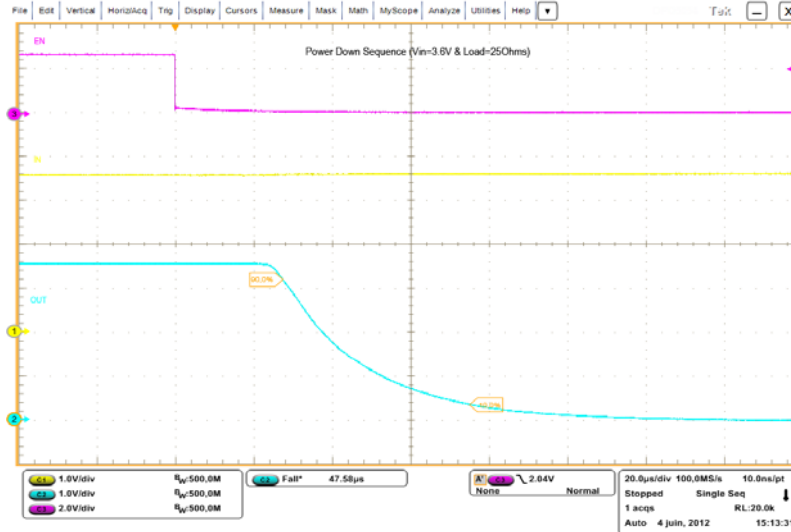


Figure 13. Disable Time and Fall Time

FUNCTIONAL DESCRIPTION

Overview

The NCP337 is a high side P channel MOSFET power distribution switch designed to isolate ICs connected on the battery in order to save energy. The part can be turned on, with a wide range of battery from 1.2 V to 5.5 V.

Enable Input

Enable pin is an active high. The path is opened when EN pin is tied low (disable), forcing P MOS switch off.

The IN/OUT path is activated with a minimum of V_{in} of 1.2 V and EN forced to high level.

Auto Discharge

NMOS FET is placed between the output pin and GND, in order to discharge the application capacitor connected on OUT pin.

The auto-discharge is activated when EN pin is set to low level (disable state).

The discharge path (Pull down NMOS) stays activated as long as EN pin is set at low level and $V_{in} > 1.2$ V.

In order to limit the current across the internal discharge Nmosfet, the typical value is set at 70 Ω .

Cin and Cout Capacitors

IN and OUT, 1 μ F, at least, capacitors must be placed as close as possible the part to for stability improvement.

NCP336, NCP337

APPLICATION INFORMATION

Power Dissipation

Main contributor in term of junction temperature is the power dissipation of the power MOSFET. Assuming this, the power dissipation and the junction temperature in normal mode can be calculated with the following equations:

- $P_D = R_{DS(on)} \times (I_{OUT})^2$
 P_D = Power dissipation (W)
 $R_{DS(on)}$ = Power MOSFET on resistance (Ω)
 I_{OUT} = Output current (A)

- $T_J = P_D \times R_{\theta JA} + T_A$
 T_J = Junction temperature ($^{\circ}C$)
 $R_{\theta JA}$ = Package thermal resistance ($^{\circ}C/W$)
 T_A = Ambient temperature ($^{\circ}C$)

PCB Recommendations

The NCP337 integrates an up to 3 A rated PMOS FET, and the PCB design rules must be respected to properly evacuate the heat out of the silicon. By increasing PCB area, especially around IN and OUT pins, the $R_{\theta JA}$ of the package can be decreased, allowing higher power dissipation.

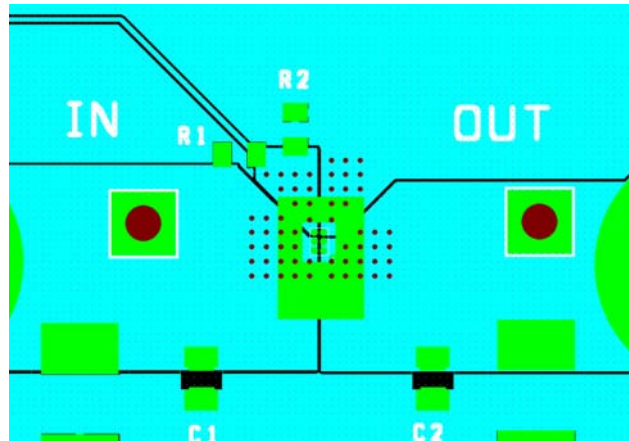


Figure 14. Routing Example: 2 oz, 4 layers with vias across 2 internal inners.

Example of application definition.

$$T_J - T_A = R_{\theta JA} \times P_D = R_{\theta JA} \times R_{DS(on)} \times I^2$$

T_J : junction temperature.

T_A : ambient temperature.

R_{θ} = Thermal resistance between IC and air, through PCB.

$R_{DS(on)}$: intrinsic resistance of the IC Mosfet.

I: load DC current.

Taking into account of R_{θ} obtain with:

- 1 oz, 2 layers: 100 $^{\circ}C/W$.

At 3 A, 25 $^{\circ}C$ ambient temperature, $R_{DS(on)}$ 20 m Ω @ V_{in} 5 V, the junction temperature will be:

$$T_J = T_A + R_{\theta} \times P_D = 25 + (0.024 \times 3^2) \times 100 = 43^{\circ}C$$

Taking into account of R_{θ} obtain with:

- 2 oz, 4 layers: 60 $^{\circ}C/W$.

At 3 A, 65 $^{\circ}C$ ambient temperature, $R_{DS(on)}$ 24 m Ω @ V_{in} 5 V, the junction temperature will be:

$$T_J = T_A + R_{\theta} \times P_D = 65 + (0.024 \times 3^2) \times 60 = 78^{\circ}C$$

ORDERING INFORMATION

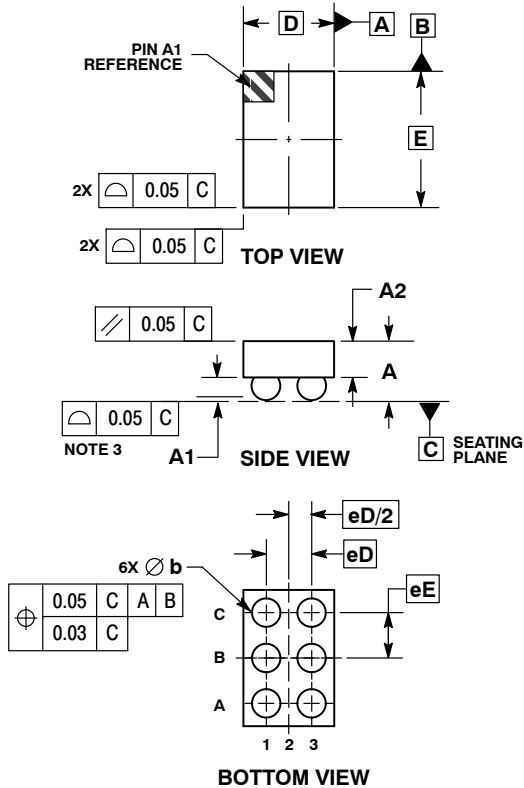
| Device | Marking | Option | Package | Shipping [†] |
|-------------|---------|-----------------------|------------------|-----------------------|
| NCP337FCT2G | AC | Auto discharge | WLCSP 1 x 1.5 mm | 3000 Tape / Reel |
| NCP336FCT2G | AF | Without Autodischarge | WLCSP 1 x 1.5 mm | 3000 Tape / Reel |

[†]For information on tape and reel specifications, including part orientation and tape sizes, please refer to our Tape and Reel Packaging Specifications Brochure, BRD8011/D.

NCP336, NCP337

PACKAGE DIMENSIONS

WLCSP6, 1.00x1.50
CASE 567FH
ISSUE O

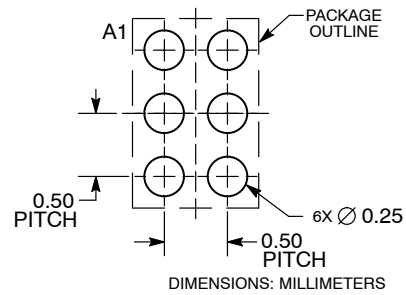


NOTES:

1. DIMENSIONING AND TOLERANCING PER ASME Y14.5M, 1994.
2. CONTROLLING DIMENSION: MILLIMETERS.
3. COPLANARITY APPLIES TO SPHERICAL CROWNS OF SOLDER BALLS.

| MILLIMETERS | | |
|-------------|------|------|
| DIM | MIN | MAX |
| A | 0.54 | 0.63 |
| A1 | 0.22 | 0.28 |
| A2 | 0.33 | REF |
| b | 0.29 | 0.34 |
| D | 1.00 | BSC |
| E | 1.50 | BSC |
| e | 0.50 | BSC |

RECOMMENDED SOLDERING FOOTPRINT*



*For additional information on our Pb-Free strategy and soldering details, please download the ON Semiconductor Soldering and Mounting Techniques Reference Manual, SOLDERRM/D.

ON Semiconductor and are registered trademarks of Semiconductor Components Industries, LLC (SCILLC). SCILLC owns the rights to a number of patents, trademarks, copyrights, trade secrets, and other intellectual property. A listing of SCILLC's product/patent coverage may be accessed at www.onsemi.com/site/pdf/Patent-Marking.pdf. SCILLC reserves the right to make changes without further notice to any products herein. SCILLC makes no warranty, representation or guarantee regarding the suitability of its products for any particular purpose, nor does SCILLC assume any liability arising out of the application or use of any product or circuit, and specifically disclaims any and all liability, including without limitation special, consequential or incidental damages. "Typical" parameters which may be provided in SCILLC data sheets and/or specifications can and do vary in different applications and actual performance may vary over time. All operating parameters, including "Typicals" must be validated for each customer application by customer's technical experts. SCILLC does not convey any license under its patent rights nor the rights of others. SCILLC products are not designed, intended, or authorized for use as components in systems intended for surgical implant into the body, or other applications intended to support or sustain life, or for any other application in which the failure of the SCILLC product could create a situation where personal injury or death may occur. Should Buyer purchase or use SCILLC products for any such unintended or unauthorized application, Buyer shall indemnify and hold SCILLC and its officers, employees, subsidiaries, affiliates, and distributors harmless against all claims, costs, damages, and expenses, and reasonable attorney fees arising out of, directly or indirectly, any claim of personal injury or death associated with such unintended or unauthorized use, even if such claim alleges that SCILLC was negligent regarding the design or manufacture of the part. SCILLC is an Equal Opportunity/Affirmative Action Employer. This literature is subject to all applicable copyright laws and is not for resale in any manner.

PUBLICATION ORDERING INFORMATION

LITERATURE FULFILLMENT:
Literature Distribution Center for ON Semiconductor
P.O. Box 5163, Denver, Colorado 80217 USA
Phone: 303-675-2175 or 800-344-3860 Toll Free USA/Canada
Fax: 303-675-2176 or 800-344-3867 Toll Free USA/Canada
Email: orderlit@onsemi.com

N. American Technical Support: 800-282-9855 Toll Free
USA/Canada
Europe, Middle East and Africa Technical Support:
Phone: 421 33 790 2910
Japan Customer Focus Center
Phone: 81-3-5817-1050

ON Semiconductor Website: www.onsemi.com
Order Literature: <http://www.onsemi.com/orderlit>
For additional information, please contact your local Sales Representative

Компания «Океан Электроники» предлагает заключение долгосрочных отношений при поставках импортных электронных компонентов на взаимовыгодных условиях!

Наши преимущества:

- Поставка оригинальных импортных электронных компонентов напрямую с производств Америки, Европы и Азии, а так же с крупнейших складов мира;
- Широкая линейка поставок активных и пассивных импортных электронных компонентов (более 30 млн. наименований);
- Поставка сложных, дефицитных, либо снятых с производства позиций;
- Оперативные сроки поставки под заказ (от 5 рабочих дней);
- Экспресс доставка в любую точку России;
- Помощь Конструкторского Отдела и консультации квалифицированных инженеров;
- Техническая поддержка проекта, помощь в подборе аналогов, поставка прототипов;
- Поставка электронных компонентов под контролем ВП;
- Система менеджмента качества сертифицирована по Международному стандарту ISO 9001;
- При необходимости вся продукция военного и аэрокосмического назначения проходит испытания и сертификацию в лаборатории (по согласованию с заказчиком);
- Поставка специализированных компонентов военного и аэрокосмического уровня качества (Xilinx, Altera, Analog Devices, Intersil, Interpoint, Microsemi, Actel, Aeroflex, Peregrine, VPT, Syfer, Eurofarad, Texas Instruments, MS Kennedy, Miteq, Cobham, E2V, MA-COM, Hittite, Mini-Circuits, General Dynamics и др.);

Компания «Океан Электроники» является официальным дистрибьютором и эксклюзивным представителем в России одного из крупнейших производителей разъемов военного и аэрокосмического назначения «JONHON», а так же официальным дистрибьютором и эксклюзивным представителем в России производителя высокотехнологичных и надежных решений для передачи СВЧ сигналов «FORSTAR».



JONHON

«JONHON» (основан в 1970 г.)

Разъемы специального, военного и аэрокосмического назначения:

(Применяются в военной, авиационной, аэрокосмической, морской, железнодорожной, горно- и нефтедобывающей отраслях промышленности)

«FORSTAR» (основан в 1998 г.)

ВЧ соединители, коаксиальные кабели, кабельные сборки и микроволновые компоненты:

(Применяются в телекоммуникациях гражданского и специального назначения, в средствах связи, РЛС, а так же военной, авиационной и аэрокосмической отраслях промышленности).



Телефон: 8 (812) 309-75-97 (многоканальный)

Факс: 8 (812) 320-03-32

Электронная почта: ocean@oceanchips.ru

Web: <http://oceanchips.ru/>

Адрес: 198099, г. Санкт-Петербург, ул. Калинина, д. 2, корп. 4, лит. А