

Type 450C 105 °C Ultra-Ripple, Long-life, Inverter Grade, Radial Leaded

The Ultimate in Ripple for Plug-in



Type 450C is the 105 °C version of the Type 420C Inverter Grade capacitor, and it is the PC-mount version of the Type 550C. It delivers the ripple-current capability and exceptional life needed for motor-drive and inverter bus capacitors. It is a significantly better value than comparable 105 °C snap-in capacitors. The extended cathode foil of the 450C assures cool operation and heat flow from the capacitor element to the can in all orientations.

Highlights

- Better value than large 105 °C snap-in capacitors
- Especially for motor drives and UPS systems
- ESRs to 6.9 mΩ
- Printed-circuit mounting
- Thermal-Pak™ extended cathode construction

Specifications

- Operating Temperature:** -40 °C to 105 °C
Rated Voltage: 100 to 500 Vdc
Capacitance: 150 µF to 24,000 µF ± 20%
DC Leakage Current: ≤ 3 √CV µA, 4 mA max, 5 minutes
Cold Impedance: 20 °C multiple of 25 °C Z ≤ 3
Ripple Current Multipliers: Ambient Temperature

| 45 °C | 55 °C | 65 °C | 75 °C | 85 °C | 95 °C | 105 °C |
|-------|-------|-------|-------|-------|-------|--------|
| 1.66 | 1.52 | 1.37 | 1.20 | 1.00 | 0.75 | 0.36 |

Frequency

| | 50 Hz | 60 Hz | 120 Hz | 360 Hz | 1 kHz | 5 kHz | 10 kHz |
|--------------------------------------|-------|-------|--------|--------|-------|-------|--------|
| 1 3/8" & 1 3/4" Diameters | | | | | | | |
| 100 to 350 V | 0.91 | 0.93 | 1.00 | 1.06 | 1.08 | 1.09 | 1.09 |
| 400 to 500 V | 0.82 | 0.86 | 1.00 | 1.14 | 1.20 | 1.23 | 1.23 |
| 2" Diameters | | | | | | | |
| 100 to 350 V | 0.92 | 0.94 | 1.00 | 1.05 | 1.07 | 1.08 | 1.08 |
| 400 to 500 V | 0.82 | 0.86 | 1.00 | 1.14 | 1.20 | 1.23 | 1.27 |

EIA Ripple Life: 5000 h at 85 °C per EIA IS-749 with 85 °C ripple current

- Δ Capacitance ± 20%
- ESR 200 % of limit
- DCL 100 % of limit

Life Test: 10,000 h at 105 °C with rated voltage

- Δ Capacitance ± 10%
- ESR 200 % of limit
- DCL 100 % of limit

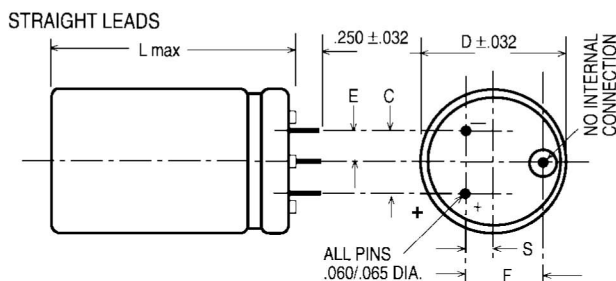
Shelf Life Test: 500 h at 105 °C. Capacitance, ESR and DCL meet initial requirements

Vibration: 10 to 55 Hz, 0.06" and 10 g max, 2 h each plane



Complies with the EU Directive 2002/95/EC requirement restricting the use of Lead (Pb), Mercury (Hg), Cadmium (Cd), Hexavalent chromium (Cr(VI)), PolyBrominated Biphenyls (PBB) and PolyBrominated Diphenyl Ethers (PBDE).

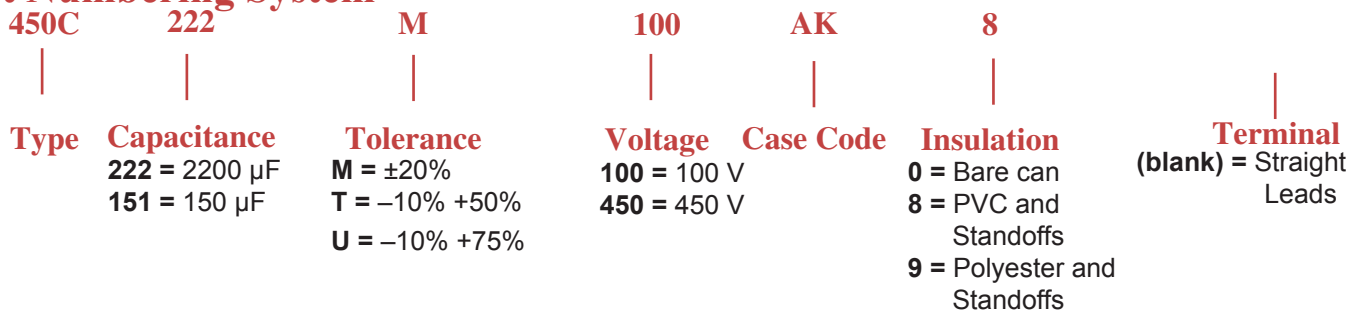
Type 450C 105 °C Ultra-Ripple, Long-life, Inverter Grade, Radial Leaded Outline Drawings



Case Dimensions

| Case Code | Inches | | | | | | Millimeters | | | | | |
|-----------|----------|-------|----------|----------|----------|----------|-------------|--------|---------|---------|---------|---------|
| | D ± .031 | L MAX | C ± .015 | S ± .031 | E ± .031 | F ± .015 | D ± .78 | L MAX | C ± .78 | S ± .78 | E ± .78 | F ± .38 |
| AK | 1.375 | 1.75 | 0.50 | 0.175 | 0.25 | 0.55 | 34.93 | 44.45 | 12.70 | 4.45 | 6.35 | 13.97 |
| AA | 1.375 | 2.25 | 0.50 | 0.175 | 0.25 | 0.55 | 34.93 | 57.15 | 12.70 | 4.45 | 6.35 | 13.97 |
| AH | 1.375 | 2.75 | 0.50 | 0.175 | 0.25 | 0.55 | 34.98 | 69.85 | 12.70 | 4.45 | 6.35 | 13.97 |
| AB | 1.375 | 3.25 | 0.50 | 0.175 | 0.25 | 0.55 | 34.93 | 82.55 | 12.70 | 4.45 | 6.35 | 13.97 |
| AJ | 1.375 | 3.75 | 0.50 | 0.175 | 0.25 | 0.55 | 34.93 | 95.25 | 12.70 | 4.45 | 6.35 | 13.97 |
| AC | 1.375 | 4.25 | 0.50 | 0.175 | 0.25 | 0.55 | 34.93 | 107.95 | 12.70 | 4.45 | 6.35 | 13.97 |
| AD | 1.375 | 4.75 | 0.50 | 0.175 | 0.25 | 0.55 | 34.93 | 120.65 | 12.70 | 4.45 | 6.35 | 13.97 |
| AE | 1.375 | 5.25 | 0.50 | 0.175 | 0.25 | 0.55 | 34.93 | 133.35 | 12.70 | 4.45 | 6.35 | 13.97 |
| AF | 1.375 | 5.75 | 0.50 | 0.175 | 0.25 | 0.55 | 34.93 | 146.05 | 12.70 | 4.45 | 6.35 | 13.97 |
| EA | 1.75 | 2.25 | 0.70 | 0.375 | 0.35 | 0.90 | 44.45 | 57.15 | 17.78 | 9.53 | 8.89 | 22.86 |
| EH | 1.75 | 2.75 | 0.70 | 0.375 | 0.35 | 0.90 | 44.45 | 69.85 | 17.78 | 9.53 | 8.89 | 22.86 |
| EB | 1.75 | 3.25 | 0.70 | 0.375 | 0.35 | 0.90 | 44.45 | 82.55 | 17.78 | 9.53 | 8.89 | 22.86 |
| EJ | 1.75 | 3.75 | 0.70 | 0.375 | 0.35 | 0.90 | 44.45 | 95.25 | 17.78 | 9.53 | 8.89 | 22.86 |
| EC | 1.75 | 4.25 | 0.70 | 0.375 | 0.35 | 0.90 | 44.45 | 107.95 | 17.78 | 9.53 | 8.89 | 22.86 |
| ED | 1.75 | 4.75 | 0.70 | 0.375 | 0.35 | 0.90 | 44.45 | 120.65 | 17.78 | 9.53 | 8.89 | 22.86 |
| EE | 1.75 | 5.25 | 0.70 | 0.375 | 0.35 | 0.90 | 44.45 | 133.35 | 17.78 | 9.53 | 8.89 | 22.86 |
| EF | 1.75 | 5.75 | 0.70 | 0.375 | 0.35 | 0.90 | 44.45 | 146.05 | 17.78 | 9.53 | 8.89 | 22.86 |
| BA | 2.00 | 2.25 | 0.80 | 0.425 | 0.40 | 1.00 | 50.80 | 57.15 | 20.32 | 10.80 | 10.16 | 25.40 |
| BH | 2.00 | 2.75 | 0.80 | 0.425 | 0.40 | 1.00 | 50.80 | 69.85 | 20.32 | 10.80 | 10.16 | 25.40 |
| BB | 2.00 | 3.25 | 0.80 | 0.425 | 0.40 | 1.00 | 50.80 | 82.55 | 20.32 | 10.80 | 10.16 | 25.40 |
| BJ | 2.00 | 3.75 | 0.80 | 0.425 | 0.40 | 1.00 | 50.80 | 95.25 | 20.32 | 10.80 | 10.16 | 25.40 |
| BC | 2.00 | 4.25 | 0.80 | 0.425 | 0.40 | 1.00 | 50.80 | 107.95 | 20.32 | 10.80 | 10.16 | 25.40 |
| BD | 2.00 | 4.75 | 0.80 | 0.425 | 0.40 | 1.00 | 50.80 | 120.65 | 20.32 | 10.80 | 10.16 | 25.40 |
| BE | 2.00 | 5.25 | 0.80 | 0.425 | 0.40 | 1.00 | 50.80 | 133.25 | 20.32 | 10.80 | 10.16 | 25.40 |
| BF | 2.00 | 5.75 | 0.80 | 0.425 | 0.40 | 1.00 | 50.80 | 146.05 | 20.32 | 10.80 | 10.16 | 25.40 |

Part Numbering System



Type 450C 105 °C Ultra-Ripple, Long-life, Inverter Grade, Radial Leaded

Ratings

| Cap. (µF) | Catalog Part Number | ESR Max. 25 °C | | Ripple Amps, 85 °C | | Nominal Size D X L (in) |
|-------------------------|------------------------|--------------------------|--------------------------|-----------------------|----------------------|----------------------------------|
| | | 120 Hz 20 kHz (mΩ) | 120 Hz 20 kHz (mΩ) | 120 Hz 20 kHz (A) | 120 Hz 20 kHz (A) | |
| 100 Vdc (125 Vdc Surge) | | | | | | |
| 2200 | 450C222M100AK8 | 74.90 | 50.90 | 4.20 | 5.20 | 1 3/8 X 1 3/4 |
| 3300 | 450C332M100AA8 | 50.30 | 34.20 | 5.80 | 7.30 | 1 3/8 X 2 1/4 |
| 4000 | 450C402M100AH8 | 36.80 | 24.90 | 7.00 | 8.80 | 1 3/8 X 2 3/4 |
| 4800 | 450C482M100EA8 | 40.10 | 27.20 | 7.50 | 9.40 | 1 3/4 X 2 1/4 |
| 5800 | 450C582M100AB8 | 28.50 | 19.40 | 8.60 | 10.70 | 1 3/8 X 3 1/4 |
| 6100 | 450C612M100BA8 | 37.00 | 25.10 | 8.40 | 10.50 | 2 X 2 1/4 |
| 6600 | 450C662M100EH8 | 28.70 | 19.50 | 9.50 | 11.90 | 1 3/4 X 2 3/4 |
| 7100 | 450C712M100AJ8 | 23.50 | 15.90 | 9.90 | 12.40 | 1 3/8 X 3 3/4 |
| 8200 | 450C822M100BH8 | 26.30 | 17.80 | 10.70 | 13.40 | 2 X 2 3/4 |
| 8400 | 450C842M100AC8 | 20.10 | 13.60 | 11.30 | 14.10 | 1 3/8 X 4 1/4 |
| 8700 | 450C872M100EB8 | 22.20 | 15.10 | 11.70 | 14.60 | 1 3/4 X 3 1/4 |
| 9800 | 450C982M100AD8 | 17.70 | 12.00 | 12.60 | 15.80 | 1 3/8 X 4 3/4 |
| 11000 | 450C113M100AE8 | 15.90 | 10.80 | 13.90 | 17.40 | 1 3/8 X 5 1/4 |
| 11000 | 450C113M100EJ8 | 18.30 | 12.40 | 13.30 | 16.60 | 1 3/4 X 3 3/4 |
| 11000 | 450C113M100BB8 | 20.40 | 13.80 | 12.90 | 16.10 | 2 X 3 1/4 |
| 12000 | 450C123M100AF8 | 18.10 | 12.30 | 13.70 | 17.10 | 1 3/8 X 5 3/4 |
| 13000 | 450C133M100EC8 | 15.60 | 10.60 | 14.90 | 18.60 | 1 3/4 X 4 1/4 |
| 14000 | 450C143M100BJ8 | 16.80 | 11.40 | 15.90 | 19.90 | 2 X 3 3/4 |
| 15000 | 450C153M100ED8 | 13.70 | 9.30 | 16.80 | 21.00 | 1 3/4 X 4 3/4 |
| 16000 | 450C163M100BC8 | 14.40 | 9.80 | 17.30 | 21.60 | 2 X 4 1/4 |
| 17000 | 450C173M100EE8 | 12.30 | 8.40 | 18.80 | 23.40 | 1 3/4 X 5 1/4 |
| 18000 | 450C183M100BD8 | 12.70 | 8.60 | 19.00 | 23.70 | 2 X 4 3/4 |
| 19000 | 450C193M100EF8 | 11.30 | 7.60 | 21.00 | 26.20 | 1 3/4 X 5 3/4 |
| 22000 | 450C223M100BE8 | 11.10 | 7.50 | 21.00 | 26.20 | 2 X 5 1/4 |
| 24000 | 450C243M100BF8 | 10.20 | 6.90 | 22.70 | 28.40 | 2 X 5 3/4 |
| 160 Vdc (200 Vdc Surge) | | | | | | |
| 1200 | 450C122M160AK8 | 113.00 | 65.20 | 4.20 | 5.60 | 1 3/8 X 1 3/4 |
| 1800 | 450C182M160AA8 | 75.70 | 44.10 | 5.90 | 7.70 | 1 3/8 X 2 1/4 |
| 2600 | 450C262M160EA8 | 56.20 | 36.80 | 7.50 | 9.30 | 1 3/4 X 2 1/4 |
| 3000 | 450C302M160AH8 | 53.20 | 31.30 | 7.30 | 9.50 | 1 3/8 X 2 3/4 |
| 3300 | 450C332M160AB8 | 41.40 | 24.70 | 8.90 | 11.50 | 1 3/8 X 3 1/4 |
| 3300 | 450C332M160BA8 | 47.90 | 34.10 | 8.30 | 9.90 | 2 X 2 1/4 |
| 3600 | 450C362M160EH8 | 40.20 | 26.00 | 9.50 | 11.80 | 1 3/4 X 2 3/4 |
| 4000 | 450C402M160AJ8 | 34.20 | 20.60 | 10.20 | 13.10 | 1 3/8 X 3 3/4 |
| 4500 | 450C452M160BH8 | 33.90 | 23.80 | 10.70 | 12.70 | 2 X 2 3/4 |
| 4700 | 450C472M160EB8 | 31.20 | 20.40 | 11.70 | 14.40 | 1 3/4 X 3 1/4 |
| 4800 | 450C482M160AC8 | 29.40 | 18.00 | 11.60 | 14.80 | 1 3/8 X 4 1/4 |
| 5300 | 450C532M160AD8 | 26.90 | 16.50 | 12.70 | 16.20 | 1 3/8 X 4 3/4 |
| 5800 | 450C582M160EJ8 | 25.70 | 16.90 | 13.30 | 16.30 | 1 3/4 X 3 3/4 |
| 6000 | 450C602M160BB8 | 26.40 | 18.60 | 12.70 | 15.10 | 2 X 3 1/4 |
| 6100 | 450C612M160AE8 | 24.20 | 15.10 | 14.00 | 17.80 | 1 3/8 X 5 1/4 |
| 6700 | 450C672M160AF8 | 22.20 | 14.10 | 15.40 | 19.30 | 1 3/8 X 5 3/4 |
| 6900 | 450C692M160EC8 | 22.00 | 14.70 | 14.90 | 18.20 | 1 3/4 X 4 1/4 |
| 7400 | 450C742M160BJ8 | 21.70 | 15.50 | 15.70 | 18.60 | 2 X 3 3/4 |
| 8000 | 450C802M160ED8 | 19.40 | 13.10 | 16.70 | 20.30 | 1 3/4 X 4 3/4 |
| 8700 | 450C872M160BC8 | 18.70 | 13.40 | 17.10 | 20.10 | 2 X 4 1/4 |
| 9100 | 450C912M160EE8 | 17.50 | 11.90 | 18.60 | 22.60 | 1 3/4 X 5 1/4 |
| 10000 | 450C103M160EF8 | 16.00 | 11.00 | 20.80 | 25.10 | 1 3/4 X 5 3/4 |
| 10000 | 450C103M160BD8 | 16.50 | 11.90 | 18.70 | 22.00 | 2 X 4 3/4 |
| 12000 | 450C123M160BE8 | 14.50 | 10.70 | 20.70 | 24.10 | 2 X 5 1/4 |
| 13000 | 450C133M160BF8 | 13.40 | 9.90 | 22.30 | 25.90 | 2 X 5 3/4 |
| 200 Vdc (250 Vdc Surge) | | | | | | |
| 880 | 450C881M200AK8 | 142.00 | 78.90 | 3.80 | 5.00 | 1 3/8 X 1 3/4 |
| 1300 | 450C132M200AA8 | 95.50 | 53.30 | 5.30 | 7.00 | 1 3/8 X 2 1/4 |
| 1900 | 450C192M200EA8 | 68.40 | 42.50 | 6.80 | 8.70 | 1 3/4 X 2 1/4 |
| 2000 | 450C202M200AH8 | 66.90 | 37.70 | 6.50 | 8.60 | 1 3/8 X 2 3/4 |
| 2500 | 450C252M200AB8 | 51.90 | 29.50 | 7.90 | 10.50 | 1 3/8 X 3 1/4 |

| Cap. (µF) | Catalog Part Number | ESR Max. 25 °C | | Ripple Amps, 85 °C | | Nominal Size D X L (in) |
|-------------------------|------------------------|--------------------------|--------------------------|-----------------------|----------------------|----------------------------------|
| | | 120 Hz 20 kHz (mΩ) | 120 Hz 20 kHz (mΩ) | 120 Hz 20 kHz (A) | 120 Hz 20 kHz (A) | |
| 2500 | 450C252M200BA8 | 56.70 | 38.10 | 7.70 | 9.30 | 2 X 2 1/4 |
| 2700 | 450C272M200EH8 | 49.00 | 30.10 | 8.60 | 11.00 | 1 3/4 X 2 3/4 |
| 3000 | 450C302M200AJ8 | 42.70 | 24.60 | 9.10 | 12.00 | 1 3/8 X 3 3/4 |
| 3300 | 450C332M200BH8 | 40.30 | 26.70 | 9.80 | 12.00 | 2 X 2 3/4 |
| 3500 | 450C352M200EB8 | 37.90 | 23.50 | 10.60 | 13.40 | 1 3/4 X 3 1/4 |
| 3600 | 450C362M200AC8 | 36.50 | 21.30 | 10.40 | 13.60 | 1 3/8 X 4 1/4 |
| 4000 | 450C402M200AD8 | 33.40 | 19.50 | 11.40 | 14.90 | 1 3/8 X 4 3/4 |
| 4300 | 450C432M200EJ8 | 31.20 | 19.50 | 12.10 | 15.20 | 1 3/4 X 3 3/4 |
| 4400 | 450C442M200BB8 | 31.20 | 20.90 | 11.70 | 14.30 | 2 X 3 1/4 |
| 4500 | 450C452M200AE8 | 29.90 | 17.70 | 12.60 | 16.40 | 1 3/8 X 5 1/4 |
| 5000 | 450C502M200AF8 | 27.30 | 16.40 | 13.90 | 17.90 | 1 3/8 X 5 3/4 |
| 5100 | 450C512M200EC8 | 26.60 | 16.80 | 13.50 | 17.00 | 1 3/4 X 4 1/4 |
| 5500 | 450C552M200BJ8 | 25.70 | 17.30 | 14.50 | 17.60 | 2 X 3 3/4 |
| 6000 | 450C602M200ED8 | 23.40 | 14.90 | 15.20 | 19.00 | 1 3/4 X 4 3/4 |
| 6400 | 450C642M200BC8 | 22.00 | 14.90 | 15.70 | 19.10 | 2 X 4 1/4 |
| 6700 | 450C672M200EE8 | 21.00 | 13.50 | 17.00 | 21.20 | 1 3/4 X 5 1/4 |
| 7400 | 450C742M200BD8 | 19.40 | 13.30 | 17.30 | 20.90 | 2 X 4 3/4 |
| 7600 | 450C762M200EF8 | 19.10 | 12.50 | 19.00 | 23.60 | 1 3/4 X 5 3/4 |
| 8900 | 450C892M200BE8 | 16.90 | 11.80 | 19.10 | 22.90 | 2 X 5 1/4 |
| 9800 | 450C982M200BF8 | 15.50 | 10.90 | 20.70 | 24.70 | 2 X 5 3/4 |
| 250 Vdc (300 Vdc Surge) | | | | | | |
| 550 | 450C551M250AK8 | 210.00 | 87.30 | 3.10 | 4.80 | 1 3/8 X 1 3/4 |
| 830 | 450C831M250AA8 | 141.00 | 58.90 | 4.30 | 6.70 | 1 3/8 X 2 1/4 |
| 1000 | 450C102M250AH8 | 98.10 | 41.60 | 5.40 | 8.20 | 1 3/8 X 2 3/4 |
| 1200 | 450C122M250EA8 | 96.10 | 45.90 | 5.80 | 8.30 | 1 3/4 X 2 1/4 |
| 1500 | 450C152M250BA8 | 76.50 | 40.60 | 6.60 | 9.00 | 2 X 2 1/4 |
| 1600 | 450C162M250AB8 | 75.70 | 32.50 | 6.50 | 10.00 | 1 3/8 X 3 1/4 |
| 1700 | 450C172M250EH8 | 69.20 | 32.60 | 7.20 | 10.60 | 1 3/4 X 2 3/4 |
| 1900 | 450C192M250AJ8 | 62.00 | 27.00 | 7.60 | 11.50 | 1 3/8 X 3 3/4 |
| 2100 | 450C212M250BH8 | 54.70 | 28.50 | 8.40 | 11.60 | 2 X 2 3/4 |
| 2200 | 450C222M250EB8 | 53.40 | 25.40 | 8.90 | 12.90 | 1 3/4 X 3 1/4 |
| 2300 | 450C232M250AC8 | 52.70 | 23.30 | 8.70 | 13.00 | 1 3/8 X 4 1/4 |
| 2500 | 450C252M250AD8 | 48.20 | 21.30 | 9.50 | 14.20 | 1 3/8 X 4 3/4 |
| 2700 | 450C272M250EJ8 | 43.60 | 21.00 | 10.20 | 14.70 | 1 3/4 X 3 3/4 |
| 2800 | 450C282M250BB8 | 42.20 | 22.20 | 10.10 | 13.90 | 2 X 3 1/4 |
| 2900 | 450C292M250AE8 | 43.00 | 19.40 | 10.50 | 15.70 | 1 3/8 X 5 1/4 |
| 3100 | 450C312M250AF8 | 38.90 | 17.90 | 11.60 | 17.10 | 1 3/8 X 5 3/4 |
| 3200 | 450C322M250EC8 | 37.10 | 18.10 | 11.50 | 16.40 | 1 3/4 X 4 1/4 |
| 3400 | 450C342M250BJ8 | 34.60 | 18.40 | 12.50 | 17.10 | 2 X 3 3/4 |
| 3800 | 450C382M250ED8 | 32.40 | 16.00 | 12.90 | 18.40 | 1 3/4 X 4 3/4 |
| 4100 | 450C412M250BC8 | 29.40 | 15.90 | 13.60 | 18.50 | 2 X 4 1/4 |
| 4200 | 450C422M250EE8 | 28.90 | 14.50 | 14.50 | 20.50 | 1 3/4 X 5 1/4 |
| 4700 | 450C472M250BD8 | 26.00 | 14.10 | 14.90 | 20.30 | 2 X 4 3/4 |
| 4800 | 450C482M250EF8 | 26.20 | 13.40 | 16.30 | 22.80 | 1 3/4 X 5 3/4 |
| 5600 | 450C562M250BE8 | 22.40 | 12.50 | 16.60 | 22.30 | 2 X 5 1/4 |
| 6200 | 450C622M250BF8 | 20.40 | 11.50 | 18.00 | 24.00 | 2 X 5 3/4 |
| 300 Vdc (350 Vdc Surge) | | | | | | |
| 380 | 450C381M300AK8 | 283.00 | 134.00 | 2.40 | 3.50 | 1 3/8 X 1 3/4 |
| 570 | 450C571M300AA8 | 189.00 | 89.90 | 3.30 | 4.80 | 1 3/8 X 2 1/4 |
| 800 | 450C801M300AH8 | 131.00 | 63.10 | 4.10 | 6.00 | 1 3/8 X 2 3/4 |
| 960 | 450C961M300EA8 | 119.00 | 56.70 | 4.80 | 6.90 | 1 3/4 X 2 1/4 |
| 1100 | 450C112M300AB8 | 101.00 | 49.00 | 5.10 | 7.30 | 1 3/8 X 3 1/4 |
| 1200 | 450C122M300BA8 | 106.00 | 53.20 | 5.50 | 7.80 | 2 X 2 1/4 |
| 1300 | 450C132M300EH8 | 87.00 | 40.80 | 6.00 | 8.70 | 1 3/4 X 2 3/4 |
| 1300 | 450C132M300AJ8 | 82.40 | 40.40 | 5.90 | 8.40 | 1 3/8 X 3 3/4 |
| 1500 | 450C152M300AC8 | 69.70 | 34.60 | 6.70 | 9.50 | 1 3/8 X 4 1/4 |
| 1600 | 450C162M300BH8 | 75.80 | 37.70 | 7.00 | 9.90 | 2 X 2 3/4 |
| 1700 | 450C172M300EB8 | 66.90 | 31.70 | 7.30 | 10.70 | 1 3/4 X 3 1/4 |

Type 450C 105 °C Ultra-Ripple, Long-life, Inverter Grade, Radial Ledded

| Cap. (µF) | Catalog Part Number | ESR Max. 25 °C | | Ripple Amps, 85 °C | | Nominal Size D X L (in) |
|------------------------------------|------------------------|-----------------------|----------------|-----------------------|--------------|----------------------------------|
| | | 120 Hz 20 kHz (mΩ) | 20 kHz (mΩ) | 120 Hz 20 kHz (A) | 85 °C (A) | |
| 1800 | 450C182M300AD8 | 60.60 | 30.50 | 7.50 | 10.60 | 1 3/8 X 4 3/4 |
| 2100 | 450C212M300AE8 | 53.70 | 27.50 | 8.40 | 11.70 | 1 3/8 X 5 1/4 |
| 2100 | 450C212M300EJ8 | 54.50 | 26.10 | 8.40 | 12.10 | 1 3/4 X 3 3/4 |
| 2100 | 450C212M300BB8 | 58.40 | 29.30 | 8.40 | 11.90 | 2 X 3 1/4 |
| 2300 | 450C232M300AF8 | 48.40 | 25.10 | 9.30 | 12.90 | 1 3/8 X 5 3/4 |
| 2500 | 450C252M300EC8 | 48.10 | 23.30 | 9.50 | 13.60 | 1 3/4 X 4 1/4 |
| 2600 | 450C262M300BJ8 | 47.60 | 24.10 | 10.40 | 14.70 | 2 X 3 3/4 |
| 2900 | 450C292M300ED8 | 41.80 | 20.50 | 10.70 | 15.30 | 1 3/4 X 4 3/4 |
| 3100 | 450C312M300BC8 | 41.10 | 21.50 | 11.30 | 15.60 | 2 X 4 1/4 |
| 3300 | 450C332M300EE8 | 37.10 | 18.40 | 12.00 | 17.10 | 1 3/4 X 5 1/4 |
| 3600 | 450C362M300BD8 | 35.50 | 18.30 | 12.50 | 17.50 | 2 X 4 3/4 |
| 3700 | 450C372M300EF8 | 33.50 | 16.90 | 13.50 | 19.10 | 1 3/4 X 5 3/4 |
| 4300 | 450C432M300BE8 | 30.50 | 16.10 | 14.00 | 19.30 | 2 X 5 1/4 |
| 4700 | 450C472M300BF8 | 27.60 | 14.80 | 15.30 | 20.80 | 2 X 5 3/4 |
| 350 Vdc (400 Vdc Surge) | | | | | | |
| 300 | 450C301M350AK8 | 325.00 | 150.00 | 2.20 | 3.30 | 1 3/8 X 1 3/4 |
| 460 | 450C461M350AA8 | 217.00 | 100.00 | 3.10 | 4.60 | 1 3/8 X 2 1/4 |
| 600 | 450C601M350AH8 | 151.00 | 70.30 | 3.80 | 5.60 | 1 3/8 X 2 3/4 |
| 770 | 450C771M350EA8 | 135.00 | 61.90 | 4.50 | 6.60 | 1 3/4 X 2 1/4 |
| 860 | 450C861M350AB8 | 116.00 | 54.50 | 4.70 | 6.90 | 1 3/8 X 3 1/4 |
| 960 | 450C961M350BA8 | 119.00 | 57.40 | 5.20 | 7.50 | 2 X 2 1/4 |
| 1000 | 450C102M350EH8 | 99.00 | 44.70 | 5.60 | 8.30 | 1 3/4 X 2 3/4 |
| 1000 | 450C102M350AJ8 | 94.40 | 44.90 | 5.50 | 8.00 | 1 3/8 X 3 3/4 |
| 1200 | 450C122M350AC8 | 79.80 | 38.40 | 6.30 | 9.10 | 1 3/8 X 4 1/4 |
| 1300 | 450C132M350BH8 | 85.60 | 40.70 | 6.60 | 9.60 | 2 X 2 3/4 |
| 1400 | 450C142M350EB8 | 76.10 | 34.70 | 6.90 | 10.20 | 1 3/4 X 3 1/4 |
| 1500 | 450C152M350AD8 | 69.30 | 33.80 | 7.00 | 10.10 | 1 3/8 X 4 3/4 |
| 1700 | 450C172M350EJ8 | 62.00 | 28.50 | 7.90 | 11.60 | 1 3/4 X 3 3/4 |
| 1700 | 450C172M350BB8 | 65.80 | 31.60 | 7.90 | 11.40 | 2 X 3 1/4 |
| 1700 | 450C172M350AE8 | 61.40 | 30.30 | 7.80 | 11.20 | 1 3/8 X 5 1/4 |
| 1800 | 450C182M350AF8 | 55.20 | 27.70 | 8.70 | 12.30 | 1 3/8 X 5 3/4 |
| 2000 | 450C202M350EC8 | 54.60 | 25.40 | 8.90 | 13.00 | 1 3/4 X 4 1/4 |
| 2100 | 450C212M350BJ8 | 53.70 | 26.00 | 9.80 | 14.10 | 2 X 3 3/4 |
| 2300 | 450C232M350ED8 | 47.40 | 22.30 | 10.00 | 14.60 | 1 3/4 X 4 3/4 |
| 2500 | 450C252M350BC8 | 46.20 | 23.10 | 10.70 | 15.10 | 2 X 4 1/4 |
| 2600 | 450C262M350EE8 | 42.00 | 20.00 | 11.30 | 16.40 | 1 3/4 X 5 1/4 |
| 2900 | 450C292M350BD8 | 40.00 | 19.70 | 11.80 | 16.80 | 2 X 4 3/4 |
| 3000 | 450C302M350EF8 | 37.80 | 18.30 | 12.70 | 18.30 | 1 3/4 X 5 3/4 |
| 3500 | 450C352M350BE8 | 34.20 | 17.30 | 13.20 | 18.60 | 2 X 5 1/4 |
| 3800 | 450C382M350BF8 | 30.90 | 15.80 | 14.40 | 20.10 | 2 X 5 3/4 |
| 400 Vdc (450 Vdc Surge) | | | | | | |
| 270 | 450C271M400AK8 | 356.00 | 161.00 | 2.10 | 3.10 | 1 3/8 X 1 3/4 |
| 410 | 450C411M400AA8 | 238.00 | 108.00 | 3.00 | 4.40 | 1 3/8 X 2 1/4 |
| 600 | 450C601M400AH8 | 166.00 | 75.70 | 3.70 | 5.40 | 1 3/8 X 2 3/4 |
| 690 | 450C691M400EA8 | 147.00 | 65.80 | 4.30 | 6.40 | 1 3/4 X 2 1/4 |
| 770 | 450C771M400AB8 | 127.00 | 58.70 | 4.50 | 6.60 | 1 3/8 X 3 1/4 |
| 860 | 450C861M400BA8 | 129.00 | 60.60 | 5.00 | 7.30 | 2 X 2 1/4 |
| 930 | 450C931M400EH8 | 108.00 | 47.60 | 5.30 | 8.10 | 1 3/4 X 2 3/4 |
| 930 | 450C931M400AJ8 | 103.40 | 48.20 | 5.20 | 7.70 | 1 3/8 X 3 3/4 |
| 1100 | 450C112M400AC8 | 87.40 | 41.20 | 6.00 | 8.70 | 1 3/8 X 4 1/4 |
| 1200 | 450C122M400EB8 | 83.00 | 36.90 | 6.60 | 9.90 | 1 3/4 X 3 1/4 |
| 1200 | 450C122M400BH8 | 92.90 | 43.00 | 6.30 | 9.30 | 2 X 2 3/4 |
| 1300 | 450C132M400AD8 | 75.90 | 36.20 | 6.70 | 9.70 | 1 3/8 X 4 3/4 |
| 1500 | 450C152M400BB8 | 71.40 | 33.30 | 7.60 | 11.10 | 2 X 3 1/4 |
| 1500 | 450C152M400AE8 | 67.20 | 32.50 | 7.50 | 10.80 | 1 3/8 X 5 1/4 |
| 1500 | 450C152M400EJ8 | 67.50 | 30.30 | 7.50 | 11.30 | 1 3/4 X 3 3/4 |
| 1600 | 450C162M400AF8 | 60.40 | 29.60 | 8.30 | 11.90 | 1 3/8 X 5 3/4 |
| 1800 | 450C182M400EC8 | 59.40 | 26.90 | 8.50 | 12.60 | 1 3/4 X 4 1/4 |
| 1900 | 450C192M400BJ8 | 58.20 | 27.40 | 9.40 | 13.70 | 2 X 3 3/4 |
| 450 Vdc (500 Vdc Surge) | | | | | | |
| 210 | 450C211M450AK8 | 384.00 | 171.00 | 2.00 | 3.10 | 1 3/8 X 1 3/4 |
| 310 | 450C311M450AA8 | 256.00 | 115.00 | 2.90 | 4.30 | 1 3/8 X 2 1/4 |
| 400 | 450C401M450AH8 | 178.00 | 80.40 | 3.50 | 5.30 | 1 3/8 X 2 3/4 |
| 520 | 450C521M450EA8 | 157.00 | 69.20 | 4.10 | 6.30 | 1 3/4 X 2 1/4 |
| 580 | 450C581M450AB8 | 137.00 | 62.30 | 4.30 | 6.40 | 1 3/8 X 3 1/4 |
| 650 | 450C651M450BA8 | 138.00 | 63.30 | 4.80 | 7.10 | 2 X 2 1/4 |
| 700 | 450C701M450EH8 | 116.00 | 50.10 | 5.20 | 7.90 | 1 3/4 X 2 3/4 |
| 710 | 450C711M450AJ8 | 111.00 | 51.10 | 5.10 | 7.50 | 1 3/8 X 3 3/4 |
| 840 | 450C841M450AC8 | 93.90 | 43.60 | 5.80 | 8.50 | 1 3/8 X 4 1/4 |
| 870 | 450C871M450BH8 | 99.20 | 45.00 | 6.10 | 9.10 | 2 X 2 3/4 |
| 920 | 450C921M450EB8 | 88.90 | 38.80 | 6.40 | 9.60 | 1 3/4 X 3 1/4 |
| 990 | 450C991M450AD8 | 81.50 | 38.30 | 6.50 | 9.50 | 1 3/8 X 4 3/4 |
| 1100 | 450C112M450EJ8 | 72.30 | 31.80 | 7.30 | 11.00 | 1 3/4 X 3 3/4 |
| 1100 | 450C112M450AE8 | 72.10 | 34.30 | 7.20 | 10.50 | 1 3/8 X 5 1/4 |
| 1200 | 450C122M450AF8 | 64.80 | 31.20 | 8.00 | 11.60 | 1 3/8 X 5 3/4 |
| 1200 | 450C122M450BB8 | 76.30 | 34.90 | 7.40 | 10.90 | 2 X 3 1/4 |
| 1400 | 450C142M450BJ8 | 62.10 | 28.70 | 9.10 | 13.50 | 2 X 3 3/4 |
| 1400 | 450C142M450EC8 | 63.60 | 28.30 | 8.20 | 12.30 | 1 3/4 X 4 1/4 |
| 1600 | 450C162M450ED8 | 55.20 | 24.80 | 9.30 | 13.90 | 1 3/4 X 4 3/4 |
| 1700 | 450C172M450BC8 | 53.40 | 25.40 | 9.90 | 14.40 | 2 X 4 1/4 |
| 1800 | 450C182M450EE8 | 48.90 | 22.30 | 10.50 | 15.50 | 1 3/4 X 5 1/4 |
| 2000 | 450C202M450EF8 | 44.00 | 20.30 | 11.80 | 17.40 | 1 3/4 X 5 3/4 |
| 2000 | 450C202M450BD8 | 46.20 | 21.60 | 11.00 | 16.10 | 2 X 4 3/4 |
| 2300 | 450C232M450BE8 | 39.40 | 18.90 | 12.30 | 17.80 | 2 X 5 1/4 |
| 2600 | 450C262M450BF8 | 35.60 | 17.30 | 13.40 | 19.30 | 2 X 5 3/4 |
| 500 Volts (550 Volts Surge) | | | | | | |
| 150 | 450C151M500AK8 | 440.00 | 158.00 | 1.90 | 3.20 | 1 3/8 X 1 3/4 |
| 230 | 450C231M500AA8 | 294.00 | 106.00 | 2.70 | 4.50 | 1 3/8 X 2 1/4 |
| 330 | 450C331M500AH8 | 204.00 | 73.80 | 3.30 | 5.50 | 1 3/8 X 2 3/4 |
| 350 | 450C351M500EA8 | 262.00 | 146.00 | 3.70 | 6.00 | 1 3/4 X 2 1/4 |
| 430 | 450C431M500AB8 | 157.00 | 57.00 | 4.10 | 6.70 | 1 3/8 X 3 1/4 |
| 440 | 450C441M500BA8 | 208.00 | 122.00 | 4.40 | 6.90 | 2 X 2 1/4 |
| 500 | 450C501M500EH8 | 182.00 | 102.00 | 4.80 | 7.70 | 1 3/4 X 2 3/4 |
| 530 | 450C531M500AJ8 | 128.00 | 46.70 | 4.70 | 7.80 | 1 3/8 X 3 3/4 |
| 620 | 450C621M500BH8 | 144.00 | 85.30 | 5.70 | 9.00 | 2 X 2 3/4 |
| 630 | 450C631M500AC8 | 145.00 | 82.80 | 5.40 | 8.90 | 1 3/8 X 4 1/4 |
| 660 | 450C661M500EB8 | 140.00 | 78.60 | 5.90 | 9.50 | 1 3/4 X 3 1/4 |
| 700 | 450C701M500AD8 | 93.50 | 34.70 | 6.10 | 9.90 | 1 3/8 X 4 3/4 |
| 820 | 450C821M500EJ8 | 114.00 | 64.40 | 6.80 | 10.90 | 1 3/4 X 3 3/4 |
| 830 | 450C831M500BB8 | 111.00 | 66.00 | 6.90 | 10.70 | 2 X 3 1/4 |
| 830 | 450C831M500AE8 | 82.70 | 31.00 | 6.80 | 11.00 | 1 3/8 X 5 1/4 |
| 930 | 450C931M500AF8 | 74.30 | 28.20 | 7.50 | 12.20 | 1 3/8 X 5 3/4 |
| 970 | 450C971M500EC8 | 96.00 | 54.80 | 7.60 | 12.20 | 1 3/4 X 4 1/4 |
| 1000 | 450C102M500BJ8 | 90.40 | 54.10 | 8.50 | 13.30 | 2 X 3 3/4 |
| 1100 | 450C112M500ED8 | 83.30 | 48.00 | 8.60 | 13.70 | 1 3/4 X 4 3/4 |
| 1200 | 450C122M500BC8 | 76.40 | 46.20 | 9.30 | 14.50 | 2 X 4 1/4 |
| 1300 | 450C132M500EE8 | 73.70 | 42.80 | 9.70 | 15.40 | 1 3/4 X 5 1/4 |
| 1400 | 450C142M500EF8 | 66.30 | 38.90 | 11.00 | 17.30 | 1 3/4 X 5 3/4 |
| 1400 | 450C142M500BD8 | 66.40 | 40.50 | 10.30 | 15.90 | 2 X 4 3/4 |
| 1700 | 450C172M500BE8 | 57.30 | 35.40 | 11.50 | 17.70 | 2 X 5 1/4 |
| 1900 | 450C192M500BF8 | 51.80 | 32.30 | 12.60 | 19.10 | 2 X 5 3/4 |

Компания «Океан Электроники» предлагает заключение долгосрочных отношений при поставках импортных электронных компонентов на взаимовыгодных условиях!

Наши преимущества:

- Поставка оригинальных импортных электронных компонентов напрямую с производств Америки, Европы и Азии, а так же с крупнейших складов мира;
- Широкая линейка поставок активных и пассивных импортных электронных компонентов (более 30 млн. наименований);
- Поставка сложных, дефицитных, либо снятых с производства позиций;
- Оперативные сроки поставки под заказ (от 5 рабочих дней);
- Экспресс доставка в любую точку России;
- Помощь Конструкторского Отдела и консультации квалифицированных инженеров;
- Техническая поддержка проекта, помощь в подборе аналогов, поставка прототипов;
- Поставка электронных компонентов под контролем ВП;
- Система менеджмента качества сертифицирована по Международному стандарту ISO 9001;
- При необходимости вся продукция военного и аэрокосмического назначения проходит испытания и сертификацию в лаборатории (по согласованию с заказчиком);
- Поставка специализированных компонентов военного и аэрокосмического уровня качества (Xilinx, Altera, Analog Devices, Intersil, Interpoint, Microsemi, Actel, Aeroflex, Peregrine, VPT, Syfer, Eurofarad, Texas Instruments, MS Kennedy, Miteq, Cobham, E2V, MA-COM, Hittite, Mini-Circuits, General Dynamics и др.);

Компания «Океан Электроники» является официальным дистрибьютором и эксклюзивным представителем в России одного из крупнейших производителей разъемов военного и аэрокосмического назначения «JONHON», а так же официальным дистрибьютором и эксклюзивным представителем в России производителя высокотехнологичных и надежных решений для передачи СВЧ сигналов «FORSTAR».



JONHON

«JONHON» (основан в 1970 г.)

Разъемы специального, военного и аэрокосмического назначения:

(Применяются в военной, авиационной, аэрокосмической, морской, железнодорожной, горно- и нефтедобывающей отраслях промышленности)

«FORSTAR» (основан в 1998 г.)

ВЧ соединители, коаксиальные кабели, кабельные сборки и микроволновые компоненты:

(Применяются в телекоммуникациях гражданского и специального назначения, в средствах связи, РЛС, а так же военной, авиационной и аэрокосмической отраслях промышленности).



Телефон: 8 (812) 309-75-97 (многоканальный)

Факс: 8 (812) 320-03-32

Электронная почта: ocean@oceanchips.ru

Web: <http://oceanchips.ru/>

Адрес: 198099, г. Санкт-Петербург, ул. Калинина, д. 2, корп. 4, лит. А