

### FEATURES

- 11-bit, 200 MSPS output data rate per channel
- Integrated noise shaping requantizer (NSR)
- Performance with NSR enabled
  - SNR: 75.5 dBFS in 40 MHz band to 70 MHz @ 185 MSPS
  - SNR: 73.7 dBFS in 60 MHz band to 70 MHz @ 185 MSPS
- Performance with NSR disabled
  - SNR: 66.5 dBFS to 70 MHz @ 185 MSPS
  - SFDR: 83 dBc to 70 MHz @ 185 MSPS
- Low power: 1.2 W @ 185 MSPS
- 1.8 V analog supply operation
- 1.8 V LVDS (ANSI-644 levels) output
- 1-to-8 integer clock divider
- Internal ADC voltage reference
- 1.75 V p-p analog input range (programmable to 2.0 V p-p)
- Differential analog inputs with 800 MHz bandwidth
- 95 dB channel isolation/crosstalk
- Serial port control
- User-configurable built-in self-test (BIST) capability
- Energy-saving power-down modes

### APPLICATIONS

- Communications
- Diversity radio and smart antenna (MIMO) systems
- Multimode digital receivers (3G)
  - WCDMA, LTE, CDMA2000
  - WiMAX, TD-SCDMA
- I/Q demodulation systems
- General-purpose software radios

### FUNCTIONAL BLOCK DIAGRAM

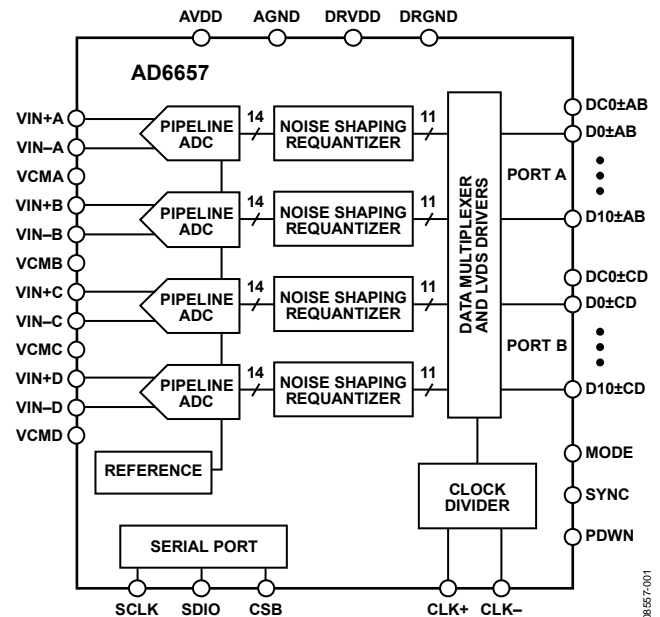


Figure 1.

### PRODUCT HIGHLIGHTS

1. Four ADCs are contained in a small, space-saving, 10 mm × 10 mm × 1.4 mm, 144-ball CSP\_BGA package.
2. Pin selectable noise shaping requantizer (NSR) function that allows for improved SNR within a reduced bandwidth of up to 60 MHz at 185 MSPS.
3. LVDS digital output interface configured for low cost FPGA families.
4. 230 mW per ADC core power consumption.
5. Operation from a single 1.8 V supply.
6. Standard serial port interface (SPI) that supports various product features and functions, such as data formatting (offset binary or two's complement), NSR, power-down, test modes, and voltage reference mode.
7. On-chip integer 1-to-8 input clock divider and multichip sync function to support a wide range of clocking schemes and multichannel subsystems.

#### Rev. B

Information furnished by Analog Devices is believed to be accurate and reliable. However, no responsibility is assumed by Analog Devices for its use, nor for any infringements of patents or other rights of third parties that may result from its use. Specifications subject to change without notice. No license is granted by implication or otherwise under any patent or patent rights of Analog Devices. Trademarks and registered trademarks are the property of their respective owners.

## TABLE OF CONTENTS

|  |    |   |    |
|--|----|---|----|
| Features .....                                   | 1  | Power Dissipation and Standby Mode .....        | 20 |
| Applications .....                               | 1  | Channel/Chip Synchronization.....               | 20 |
| Functional Block Diagram .....                   | 1  | Digital Outputs .....                           | 21 |
| Product Highlights .....                         | 1  | Timing .....                                    | 21 |
| Revision History .....                           | 2  | Noise Shaping Requantizer (NSR) .....           | 22 |
| General Description .....                        | 3  | 22% BW Mode (>40 MHz @ 184.32 MSPS).....        | 22 |
| Specifications.....                              | 4  | 33% BW Mode (>60 MHz @ 184.32 MSPS).....        | 22 |
| DC Specifications .....                          | 4  | MODE Pin.....                                   | 23 |
| AC Specifications.....                           | 5  | Built-In Self-Test (BIST) and Output Test ..... | 24 |
| Digital Specifications .....                     | 6  | Built-In Self-Test (BIST).....                  | 24 |
| Switching Specifications .....                   | 7  | Output Test Modes.....                          | 24 |
| Timing Specifications .....                      | 8  | Serial Port Interface (SPI).....                | 25 |
| Absolute Maximum Ratings.....                    | 9  | Configuration Using the SPI.....                | 25 |
| Thermal Characteristics .....                    | 9  | Hardware Interface.....                         | 25 |
| ESD Caution.....                                 | 9  | Memory Map .....                                | 26 |
| Pin Configuration and Function Descriptions..... | 10 | Reading the Memory Map Register Table.....      | 26 |
| Typical Performance Characteristics .....        | 12 | Memory Map Register Table.....                  | 27 |
| Equivalent Circuits .....                        | 15 | Memory Map Register Descriptions.....           | 29 |
| Theory of Operation .....                        | 16 | Applications Information .....                  | 30 |
| ADC Architecture .....                           | 16 | Design Guidelines .....                         | 30 |
| Analog Input Considerations.....                 | 16 | Outline Dimensions .....                        | 31 |
| Clock Input Considerations .....                 | 18 | Ordering Guide .....                            | 31 |

## REVISION HISTORY

### 8/11—Rev. A to Rev. B

|   |    |
|---|----|
| Changes to Logic Input/Output (SDIO) Parameter Note, Table 3 .....  | 6  |
| Added Wake-Up Time (from Standby) Parameter, Table 4 and Wake-Up Time (from Power Down) Parameter, Table 4..... | 7  |
| Changes to Figure 2.....  | 8  |
| Changes to Table 11.....  | 21 |
| Updated Outline Dimensions .....  | 31 |

### 7/10—Rev. 0 to Rev. A

|  |    |
|--|----|
| Changes to ADC Architecture Section.....   | 16 |
| Changes to Figure 34 and Figure 35.....  | 18 |
| Changes to Timing Section and Data Clock Output (DCO) Section.....   | 21 |
| Changes to 22% BW Mode (>40 MHz @ 184.32 MSPS) Section and 33% BW Mode (>60 MHz @ 184.32 MSPS) Section ..... | 22 |
| Changed 0x0C to 0x79, Address 0x01, Table 13.....  | 27 |
| Changed DCO Output Delay (Global) to DCO Output Delay (Local), Address 0x17, Table 13.....                   | 28 |
| Changes to Design Guidelines Section.....  | 30 |

### 10/09—Revision 0: Initial Version

## GENERAL DESCRIPTION

The AD6657 is an 11-bit, 200 MSPS, quad-channel intermediate frequency (IF) receiver specifically designed to support multi-antenna systems in telecommunication applications where high dynamic range performance, low power, and small size are desired.

The device consists of four high performance analog-to-digital converters (ADCs) and noise shaping requantizer (NSR) digital blocks. Each ADC consists of a multistage, differential pipelined architecture with integrated output error correction logic. The ADC features a wide bandwidth switched-capacitor sampling network within the first stage of the differential pipeline. An integrated voltage reference eases design considerations. A duty cycle stabilizer (DCS) compensates for variations in the ADC clock duty cycle, allowing the converters to maintain excellent performance.

Each ADC output is connected internally to an NSR block. The integrated NSR circuitry allows for improved SNR performance in a smaller frequency band within the Nyquist bandwidth. The device supports two different output modes selectable via the external MODE pin or the SPI.

With the NSR feature enabled, the outputs of the ADCs are processed such that the AD6657 supports enhanced SNR performance within a limited portion of the Nyquist bandwidth while maintaining an 11-bit output resolution. The NSR block can be programmed to provide a bandwidth of either 22% or 33% of the sample clock. For example, with a sample clock rate of 185 MSPS, the AD6657 can achieve up to 75.5 dBFS SNR for a 40 MHz bandwidth in the 22% mode and up to 73.7 dBFS SNR for a 60 MHz bandwidth in the 33% mode.

With the NSR block disabled, the ADC data is provided directly to the output with a resolution of 11 bits. The AD6657 can achieve up to 66.5 dBFS SNR for the entire Nyquist bandwidth when operated in this mode. This allows the AD6657 to be used in telecommunication applications such as a digital predistortion observation path where wider bandwidths are desired.

After digital signal processing, multiplexed output data is routed into two 11-bit output ports such that the maximum data rate is 400 Mbps (DDR). These outputs are set at 1.8 V LVDS and support ANSI-644 levels.

The AD6657 receiver digitizes a wide spectrum of IF frequencies. Each receiver is designed for simultaneous reception of a separate antenna. This IF sampling architecture greatly reduces component cost and complexity compared with traditional analog techniques or less integrated digital methods.

Flexible power-down options allow significant power savings. Programming for device setup and control is accomplished using a 3-wire SPI-compatible serial interface with numerous modes to support board-level system testing.

The AD6657 is available in a Pb-free/RoHS compliant, 144-ball, 10 mm × 10 mm chip scale package ball grid array (CSP\_BGA) and is specified over the industrial temperature range of  $-40^{\circ}\text{C}$  to  $+85^{\circ}\text{C}$ .

## SPECIFICATIONS

### DC SPECIFICATIONS

AVDD = 1.8 V, DRVDD = 1.8 V,  $f_s = 185$  MSPS, 1.75 V p-p differential input, VIN = -1.0 dBFS differential input, and default SPI, unless otherwise noted.

Table 1.

| Parameter                                    | Temperature | Min  | Typ        | Max  | Unit   |
|--|-------------|------|------------|------|--------|
| RESOLUTION                                   | Full        | 11   |            |      | Bits   |
| ACCURACY                                     |             |      | Guaranteed |      |        |
| No Missing Codes                             | Full        |      |            |      |        |
| Offset Error                                 | Full        | -4.5 | 2          | 7.4  | mV     |
| Gain Error                                   | Full        |      | ±3         | ±7   | % FSR  |
| Differential Nonlinearity (DNL) <sup>1</sup> | Full        |      | ±0.1       | ±0.5 | LSB    |
| Integral Nonlinearity (INL) <sup>1</sup>     | Full        |      | ±0.2       | ±0.5 | LSB    |
| MATCHING CHARACTERISTIC                      |             |      |            |      |        |
| Offset Error                                 | Full        | -2.4 | 2.5        | 8.3  | mV     |
| Gain Error                                   | Full        |      | ±1         | ±3   | % FSR  |
| TEMPERATURE DRIFT                            |             |      |            |      |        |
| Offset Error                                 | Full        |      | 2          |      | ppm/°C |
| Gain Error                                   | Full        |      | 40         |      | ppm/°C |
| ANALOG INPUT                                 |             |      |            |      |        |
| Input Range                                  | Full        | 1.4  | 1.75       | 2.0  | V p-p  |
| Input Common-Mode Voltage                    | Full        |      | 0.9        |      | V      |
| Input Resistance (Differential)              | Full        |      | 20         |      | kΩ     |
| Input Capacitance <sup>2</sup>               | Full        |      | 5          |      | pF     |
| POWER SUPPLIES                               |             |      |            |      |        |
| Supply Voltage                               |             |      |            |      |        |
| AVDD   | Full        | 1.7  | 1.8        | 1.9  | V      |
| DRVDD  | Full        | 1.7  | 1.8        | 1.9  | V      |
| Supply Current                               |             |      |            |      |        |
| $I_{AVDD}$ <sup>1</sup>                      | Full        |      | 510        | 548  | mA     |
| $I_{DRVDD}$ <sup>1</sup> (1.8 V LVDS)        | Full        |      | 155        | 169  | mA     |
| POWER CONSUMPTION                            |             |      |            |      |        |
| Sine Wave Input <sup>1</sup>                 | Full        |      | 1195       | 1290 | mW     |
| Standby Power <sup>3</sup>                   | Full        |      | 130        |      | mW     |
| Power-Down Power                             | Full        |      | 4.5        | 18   | mW     |

<sup>1</sup> Measured with a 10 MHz, 0 dBFS sine wave, with 100 Ω termination on each LVDS output pair.

<sup>2</sup> Input capacitance refers to the effective capacitance between one differential input pin and AGND.

<sup>3</sup> Standby power is measured with a dc input and the CLKx pins inactive (set to AVDD or AGND).

**AC SPECIFICATIONS**

AVDD = 1.8 V, DRVDD = 1.8 V,  $f_s$  = 185 MSPS, 1.75 V p-p differential input, VIN = -1.0 dBFS differential input, and default SPI, unless otherwise noted.

**Table 2.**

| Parameter <sup>1</sup>                              | Temperature | Min  | Typ  | Max | Unit |
|---|-------------|------|------|-----|------|
| <b>SIGNAL-TO-NOISE-RATIO (SNR)—NSR DISABLED</b>     |             |      |      |     |      |
| $f_{IN}$ = 30 MHz                                   | 25°C        |      | 66.5 |     | dBFS |
| $f_{IN}$ = 70 MHz                                   | 25°C        |      | 66.5 |     | dBFS |
| $f_{IN}$ = 170 MHz                                  | Full        | 65.7 | 66.1 |     | dBFS |
| $f_{IN}$ = 250 MHz                                  | 25°C        |      | 65.5 |     | dBFS |
| <b>SIGNAL-TO-NOISE-RATIO (SNR)—NSR ENABLED</b>      |             |      |      |     |      |
| <b>22% BW Mode</b>                                  |             |      |      |     |      |
| $f_{IN}$ = 70 MHz                                   | 25°C        |      | 75.5 |     | dBFS |
| $f_{IN}$ = 170 MHz                                  | Full        | 72.8 | 74.4 |     | dBFS |
| $f_{IN}$ = 230 MHz                                  | 25°C        |      | 72.8 |     | dBFS |
| <b>33% BW Mode</b>                                  |             |      |      |     |      |
| $f_{IN}$ = 70 MHz                                   | 25°C        |      | 73.7 |     | dBFS |
| $f_{IN}$ = 170 MHz                                  | Full        | 71.0 | 72.6 |     | dBFS |
| $f_{IN}$ = 230 MHz                                  | 25°C        |      | 71.0 |     | dBFS |
| <b>SIGNAL-TO-NOISE-AND DISTORTION (SINAD)</b>       |             |      |      |     |      |
| $f_{IN}$ = 30 MHz                                   | 25°C        |      | 65.5 |     | dBFS |
| $f_{IN}$ = 70 MHz                                   | 25°C        |      | 66.3 |     | dBFS |
| $f_{IN}$ = 170 MHz                                  | Full        | 64.1 | 65.6 |     | dBFS |
| $f_{IN}$ = 250 MHz                                  | 25°C        |      | 64.3 |     | dBFS |
| <b>EFFECTIVE NUMBER OF BITS (ENOB)</b>              |             |      |      |     |      |
| $f_{IN}$ = 30 MHz                                   | 25°C        |      | 10.6 |     | Bits |
| $f_{IN}$ = 70 MHz                                   | 25°C        |      | 10.7 |     | Bits |
| $f_{IN}$ = 170 MHz                                  | Full        | 10.3 | 10.6 |     | Bits |
| $f_{IN}$ = 250 MHz                                  | 25°C        |      | 10.3 |     | Bits |
| <b>WORST SECOND OR THIRD HARMONIC</b>               |             |      |      |     |      |
| $f_{IN}$ = 30 MHz                                   | 25°C        |      | -90  |     | dBc  |
| $f_{IN}$ = 70 MHz                                   | 25°C        |      | -83  |     | dBc  |
| $f_{IN}$ = 170 MHz                                  | Full        | -72  | -78  |     | dBc  |
| $f_{IN}$ = 250 MHz                                  | 25°C        |      | -80  |     | dBc  |
| <b>SPURIOUS-FREE DYNAMIC RANGE (SFDR)</b>           |             |      |      |     |      |
| $f_{IN}$ = 30 MHz                                   | 25°C        |      | 90   |     | dBc  |
| $f_{IN}$ = 70 MHz                                   | 25°C        |      | 83   |     | dBc  |
| $f_{IN}$ = 170 MHz                                  | Full        | 72   | 78   |     | dBc  |
| $f_{IN}$ = 250 MHz                                  | 25°C        |      | 80   |     | dBc  |
| <b>WORST OTHER HARMONIC (FOURTH THROUGH EIGHTH)</b> |             |      |      |     |      |
| $f_{IN}$ = 30 MHz                                   | 25°C        |      | -100 |     | dBc  |
| $f_{IN}$ = 70 MHz                                   | 25°C        |      | -96  |     | dBc  |
| $f_{IN}$ = 170 MHz                                  | Full        | -82  | -90  |     | dBc  |
| $f_{IN}$ = 250 MHz                                  | 25°C        |      | -95  |     | dBc  |
| <b>TWO-TONE SFDR (-7 dBFS)</b>                      |             |      |      |     |      |
| $f_{IN1}$ = 169 MHz, $f_{IN2}$ = 172 MHz            | 25°C        |      | 82   |     | dBc  |
| <b>CROSSTALK<sup>2</sup></b>                        |             |      |      |     |      |
|   | Full        |      | 95   |     | dB   |
| <b>ANALOG INPUT BANDWIDTH</b>                       |             |      |      |     |      |
|   | 25°C        |      | 800  |     | MHz  |

<sup>1</sup> See the AN-835 Application Note, *Understanding High Speed ADC Testing and Evaluation*, for a complete set of definitions.

<sup>2</sup> Crosstalk is measured at 155 MHz with -1 dBFS on one channel and no input on the alternate channel.

**DIGITAL SPECIFICATIONS**

AVDD = 1.8 V, DRVDD = 1.8 V,  $f_s$  = 185 MSPS, 1.75 V p-p differential input, VIN = -1.0 dBFS differential input, and default SPI, unless otherwise noted.

**Table 3.**

| Parameter                                     | Temperature | Min              | Typ | Max        | Unit       |
|---|-------------|------------------|-----|------------|------------|
| <b>DIFFERENTIAL CLOCK INPUTS (CLK+, CLK-)</b> |             |                  |     |            |            |
| Logic Compliance                              |             | CMOS/LVDS/LVPECL |     |            |            |
| Internal Common-Mode Bias                     | Full        |                  | 0.9 |            | V          |
| Differential Input Voltage                    | Full        | 0.2              |     | 3.6        | V p-p      |
| Input Voltage Range                           | Full        | AGND - 0.3       |     | AVDD + 0.2 | V          |
| High Level Input Voltage                      | Full        | 1.2              |     | 2.0        | V          |
| Low Level Input Voltage                       | Full        | 0                |     | 0.8        | V          |
| High Level Input Current                      | Full        | -10              |     | +10        | $\mu$ A    |
| Low Level Input Current                       | Full        | -10              |     | +10        | $\mu$ A    |
| Input Resistance                              | Full        | 8                | 10  | 12         | k $\Omega$ |
| Input Capacitance                             | Full        |                  | 4   |            | pF         |
| <b>SYNC INPUT</b>                             |             |                  |     |            |            |
| Logic Compliance                              |             | CMOS             |     |            |            |
| Internal Bias                                 | Full        |                  | 0.9 |            | V          |
| Input Voltage Range                           | Full        | AGND             |     | AVDD       | V          |
| High Level Input Voltage                      | Full        | 1.2              |     | AVDD       | V          |
| Low Level Input Voltage                       | Full        | AGND             |     | 0.6        | V          |
| High Level Input Current                      | Full        | -100             |     | +100       | $\mu$ A    |
| Low Level Input Current                       | Full        | -100             |     | +100       | $\mu$ A    |
| Input Resistance                              | Full        | 12               | 16  | 20         | k $\Omega$ |
| Input Capacitance                             | Full        |                  | 1   |            | pF         |
| <b>LOGIC INPUT (CSB)<sup>1</sup></b>          |             |                  |     |            |            |
| High Level Input Voltage                      | Full        | 1.22             |     | 2.1        | V          |
| Low Level Input Voltage                       | Full        | 0                |     | 0.6        | V          |
| High Level Input Current                      | Full        | -10              |     | +10        | $\mu$ A    |
| Low Level Input Current                       | Full        | 40               |     | 132        | $\mu$ A    |
| Input Resistance                              | Full        |                  | 26  |            | k $\Omega$ |
| Input Capacitance                             | Full        |                  | 2   |            | pF         |
| <b>LOGIC INPUT (SCLK)<sup>2</sup></b>         |             |                  |     |            |            |
| High Level Input Voltage                      | Full        | 1.22             |     | 2.1        | V          |
| Low Level Input Voltage                       | Full        | 0                |     | 0.6        | V          |
| High Level Input Current                      | Full        | -92              |     | -135       | $\mu$ A    |
| Low Level Input Current                       | Full        | -10              |     | +10        | $\mu$ A    |
| Input Resistance                              | Full        |                  | 26  |            | k $\Omega$ |
| Input Capacitance                             | Full        |                  | 2   |            | pF         |
| <b>LOGIC INPUT/OUTPUT (SDIO)<sup>1</sup></b>  |             |                  |     |            |            |
| High Level Input Voltage                      | Full        | 1.22             |     | 2.1        | V          |
| Low Level Input Voltage                       | Full        | 0                |     | 0.6        | V          |
| High Level Input Current                      | Full        | -10              |     | +10        | $\mu$ A    |
| Low Level Input Current                       | Full        | 38               |     | 128        | $\mu$ A    |
| Input Resistance                              | Full        |                  | 26  |            | k $\Omega$ |
| Input Capacitance                             | Full        |                  | 5   |            | pF         |

| Parameter                                | Temperature | Min   | Typ | Max   | Unit |
|--|-------------|-------|-----|-------|------|
| <b>LOGIC INPUT (MODE)<sup>1</sup></b>    |             |       |     |       |      |
| High Level Input Voltage                 | Full        | 1.22  |     | 2.1   | V    |
| Low Level Input Voltage                  | Full        | 0     |     | 0.6   | V    |
| High Level Input Current                 | Full        | -10   |     | +10   | μA   |
| Low Level Input Current                  | Full        | 40    |     | 132   | μA   |
| Input Resistance                         | Full        |       | 26  |       | kΩ   |
| Input Capacitance                        | Full        |       | 2   |       | pF   |
| <b>LOGIC INPUT (PDWN)<sup>2</sup></b>    |             |       |     |       |      |
| High Level Input Voltage                 | Full        | 1.22  |     | 2.1   | V    |
| Low Level Input Voltage                  | Full        | 0     |     | 0.6   | V    |
| High Level Input Current                 | Full        | -90   |     | -134  | μA   |
| Low Level Input Current                  | Full        | -10   |     | +10   | μA   |
| Input Resistance                         | Full        |       | 26  |       | kΩ   |
| Input Capacitance                        | Full        |       | 5   |       | pF   |
| <b>DIGITAL OUTPUTS (LVDS)</b>            |             |       |     |       |      |
| Differential Output Voltage ( $V_{OD}$ ) | Full        | 247   |     | 454   | mV   |
| Output Offset Voltage ( $V_{OS}$ )       | Full        | 1.125 |     | 1.375 | V    |

<sup>1</sup> Pull up.

<sup>2</sup> Pull down.

## SWITCHING SPECIFICATIONS

AVDD = 1.8 V, DRVDD = 1.8 V,  $f_s$  = 185 MSPS, 1.75 V p-p differential input, VIN = -1.0 dBFS differential input, and default SPI, unless otherwise noted.

**Table 4.**

| Parameter                                   | Temperature | Min  | Typ  | Max | Unit   |
|---|-------------|------|------|-----|--------|
| <b>CLOCK INPUT PARAMETERS</b>               |             |      |      |     |        |
| Input Clock Rate                            | Full        |      |      | 625 | MHz    |
| Conversion Rate <sup>1</sup>                | Full        | 40   | 185  | 200 | MSPS   |
| CLK Pulse Width High ( $t_{CH}$ )           | Full        |      | 2.7  |     | ns     |
| Aperture Delay ( $t_A$ )                    | Full        |      | 1.3  |     | ns     |
| Aperture Uncertainty (Jitter, $t_j$ )       | Full        |      | 0.13 |     | ps rms |
| <b>DATA OUTPUT PARAMETERS</b>               |             |      |      |     |        |
| Data Propagation Delay ( $t_{PD}$ )         | Full        | 3.0  | 4.35 | 5.7 | ns     |
| DCO Propagation Delay ( $t_{DCO}$ )         | Full        | 3.2  | 4.55 | 5.9 | ns     |
| DCO to Data Skew ( $t_{SKEW}$ )             | Full        | -0.4 | -0.2 | 0   | ns     |
| Pipeline Delay (Latency)                    | Full        |      | 9    |     | Cycles |
| With NSR Enabled                            | Full        |      | 12   |     | Cycles |
| Wake-Up Time <sup>2</sup> (from Standby)    | Full        |      | 0.5  |     | μs     |
| Wake-Up Time <sup>2</sup> (from Power Down) | Full        |      | 350  |     | μs     |
| <b>OUT-OF-RANGE RECOVERY TIME</b>           | Full        |      | 2    |     | Cycles |

<sup>1</sup> Conversion rate is the clock rate after the divider.

<sup>2</sup> Wake-up time is dependent on the value of the decoupling capacitors.

**TIMING SPECIFICATIONS**

AVDD = 1.8 V, DRVDD = 1.8 V,  $f_s = 185$  MSPS, 1.75 V p-p differential input,  $V_{IN} = -1.0$  dBFS differential input, and default SPI, unless otherwise noted.

**Table 5.**

| Parameter                       | Description   | Min | Typ  | Max | Unit |
|---------------------------------|---|-----|------|-----|------|
| <b>SYNC TIMING REQUIREMENTS</b> |   |     |      |     |      |
| $t_{SSYNC}$                     | SYNC to rising edge of CLK setup time   |     | 0.24 |     | ns   |
| $t_{HSYNC}$                     | SYNC to rising edge of CLK hold time  |     | 0.40 |     | ns   |
| <b>SPI TIMING REQUIREMENTS</b>  |   |     |      |     |      |
| $t_{DS}$                        | Setup time between the data and the rising edge of SCLK   | 2   |      |     | ns   |
| $t_{DH}$                        | Hold time between the data and the rising edge of SCLK  | 2   |      |     | ns   |
| $t_{CLK}$                       | Period of the SCLK  | 40  |      |     | ns   |
| $t_s$                           | Setup time between CSB and SCLK   | 2   |      |     | ns   |
| $t_h$                           | Hold time between CSB and SCLK  | 2   |      |     | ns   |
| $t_{HIGH}$                      | SCLK pulse width high   | 10  |      |     | ns   |
| $t_{LOW}$                       | SCLK pulse width low  | 10  |      |     | ns   |
| $t_{EN\_SDIO}$                  | Time required for the SDIO pin to switch from an input to an output relative to the SCLK falling edge | 10  |      |     | ns   |
| $t_{DIS\_SDIO}$                 | Time required for the SDIO pin to switch from an output to an input relative to the SCLK rising edge  | 10  |      |     | ns   |

**Timing Diagrams**

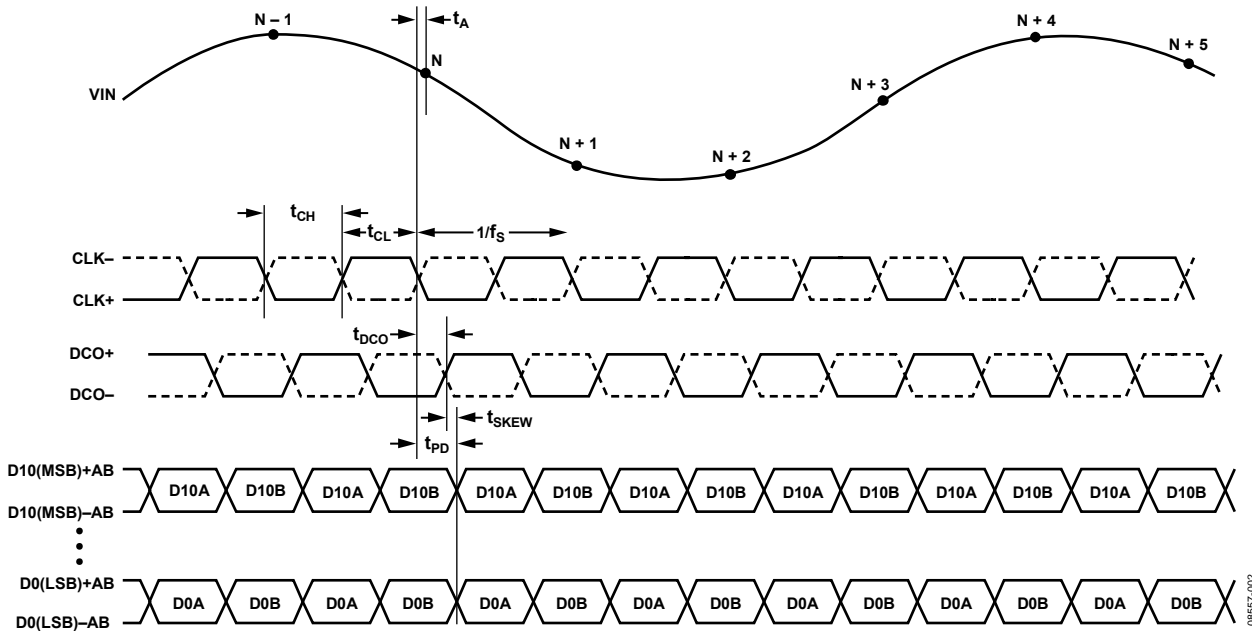


Figure 2. Data Output Timing (Timing for Channel C and Channel D Is Identical to Timing for Channel A and Channel B)

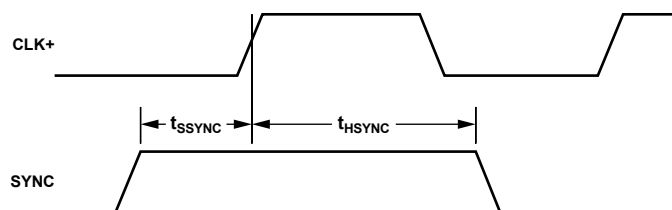


Figure 3. SYNC Input Timing Requirements



## ABSOLUTE MAXIMUM RATINGS

Table 6.

| Parameter                                  | Rating                  |
|--|-------------------------|
| AVDD to AGND                               | -0.3 V to +2.0 V        |
| DRVDD to AGND                              | -0.3 V to +2.0 V        |
| VIN+x, VIN-x to AGND                       | -0.3 V to AVDD + 0.2 V  |
| CLK+, CLK- to AGND                         | -0.3 V to AVDD + 0.2 V  |
| SYNC to AGND                               | -0.3 V to AVDD + 0.2 V  |
| VCMx to AGND                               | -0.3 V to AVDD + 0.2 V  |
| CSB to AGND                                | -0.3 V to DRVDD + 0.2 V |
| SCLK to AGND                               | -0.3 V to DRVDD + 0.2 V |
| SDIO to AGND                               | -0.3 V to DRVDD + 0.2 V |
| PDWN to AGND                               | -0.3 V to DRVDD + 0.2 V |
| MODE to AGND                               | -0.3 V to DRVDD + 0.2 V |
| Digital Outputs to AGND                    | -0.3 V to DRVDD + 0.2 V |
| DCO+AB, DCO-AB, DCO+CD,<br>DCO-CD to AGND  | -0.3 V to DRVDD + 0.2 V |
| Operating Temperature Range<br>(Ambient)   | -40°C to +85°C          |
| Maximum Junction Temperature<br>Under Bias | 150°C                   |
| Storage Temperature Range<br>(Ambient)     | -65°C to +150°C         |

Stresses above those listed under Absolute Maximum Ratings may cause permanent damage to the device. This is a stress rating only; functional operation of the device at these or any other conditions above those indicated in the operational section of this specification is not implied. Exposure to absolute maximum rating conditions for extended periods may affect device reliability.

## THERMAL CHARACTERISTICS

The values in Table 7 are per JEDEC JESD51-7 plus JEDEC JESD25-5 for a 2S2P test board. Typical  $\theta_{JA}$  is specified for a 4-layer PCB with a solid ground plane. As shown in Table 7, airflow improves heat dissipation, which reduces  $\theta_{JA}$ . In addition, metal in direct contact with the package leads from metal traces, through holes, ground, and power planes reduces  $\theta_{JA}$ .

Table 7.

| Package Type                                     | Airflow Velocity | $\theta_{JA}^1$ | $\theta_{JC}^2$ | $\theta_{JB}^3$ | Unit |
|--|------------------|-----------------|-----------------|-----------------|------|
| 144-Ball CSP_BGA,<br>10 mm × 10 mm<br>(BC-144-1) | 0 m/s            | 26.9            | 8.9             | 6.6             | °C/W |
|  | 1 m/s            | 24.2            |                 |                 |      |
|  | 2.5 m/s          | 23.0            |                 |                 |      |

<sup>1</sup> Per JEDEC JESD51-2 (still air) or JEDEC JESD51-6 (moving air).

<sup>2</sup> Per MIL-STD 883, Method 1012.1.

<sup>3</sup> Per JEDEC JESD51-8 (still air).

The values in Table 8 are from simulations. The PCB is a JEDEC multilayer board. Thermal performance for actual applications requires careful inspection of the conditions in the application to determine whether they are similar to those assumed in these calculations.

Table 8.

| Package Type                                     | Airflow Velocity | $\Psi_{JB}$ | $\Psi_{JT}$ | Unit |
|--|------------------|-------------|-------------|------|
| 144-Ball CSP_BGA,<br>10 mm × 10 mm<br>(BC-144-1) | 0 m/s            | 14.4        | 0.23        | °C/W |
|  | 1 m/s            | 14.0        | 0.50        |      |
|  | 2.5 m/s          | 13.9        | 0.53        |      |

## ESD CAUTION



**ESD (electrostatic discharge) sensitive device.** Charged devices and circuit boards can discharge without detection. Although this product features patented or proprietary protection circuitry, damage may occur on devices subjected to high energy ESD. Therefore, proper ESD precautions should be taken to avoid performance degradation or loss of functionality.

## PIN CONFIGURATION AND FUNCTION DESCRIPTIONS

|   | 1     | 2     | 3     | 4     | 5     | 6      | 7     | 8     | 9     | 10    | 11    | 12     |
|---|-------|-------|-------|-------|-------|--------|-------|-------|-------|-------|-------|--------|
| A | AGND  | VIN+C | VIN-C | AGND  | AVDD  | CLK-   | CLK+  | AVDD  | AGND  | VIN-B | VIN+B | AGND   |
| B | AGND  | AGND  | VCMC  | AGND  | AVDD  | AVDD   | AVDD  | AVDD  | AGND  | VCMB  | AGND  | AGND   |
| C | VIN+D | AGND  | AGND  | CSB   | SDIO  | SCLK   | PDWN  | SYNC  | MODE  | AGND  | AGND  | VIN+A  |
| D | VIN-D | VCMD  | AGND  | AVDD  | AVDD  | AVDD   | AVDD  | AVDD  | AVDD  | AGND  | VCMA  | VIN-A  |
| E | AGND  | AVDD  | AVDD  | AVDD  | AVDD  | AVDD   | AVDD  | AVDD  | AVDD  | AVDD  | AVDD  | AGND   |
| F | AGND  | AGND  | AGND  | AGND  | AGND  | AGND   | AGND  | AGND  | AGND  | AGND  | AGND  | AGND   |
| G | DRGND | DRGND | DRGND | DRGND | DRGND | DRGND  | DRGND | DRGND | DRGND | DRGND | DRGND | DRGND  |
| H | DRVDD | DRVDD | DRVDD | DRVDD | DRVDD | DRVDD  | DRVDD | DRVDD | DRVDD | DRVDD | DRVDD | DRVDD  |
| J | D0-CD | D2-CD | D4-CD | D6-CD | D8-CD | D10-CD | D0-AB | D2-AB | D4-AB | D6-AB | D8-AB | D10-AB |
| K | D0+CD | D2+CD | D4+CD | D6+CD | D8+CD | D10+CD | D0+AB | D2+AB | D4+AB | D6+AB | D8+AB | D10+AB |
| L | D1-CD | D3-CD | D5-CD | D7-CD | D9-CD | DCO-CD | D1-AB | D3-AB | D5-AB | D7-AB | D9-AB | DCO-AB |
| M | D1+CD | D3+CD | D5+CD | D7+CD | D9+CD | DCO+CD | D1+AB | D3+AB | D5+AB | D7+AB | D9+AB | DCO+AB |

Figure 4. Pin Configuration (Top View)

Table 9. Pin Function Descriptions

| Pin No.  | Mnemonic | Type   | Description  |
|--|----------|--------|--|
| A5, A8, B5, B6, B7, B8, D4, D5, D6, D7, D8, D9, E2, E3, E4, E5, E6, E7, E8, E9, E10, E11   | AVDD     | Supply | Analog Power Supply (1.8 V Nominal)                      |
| A1, A4, A9, A12, B1, B2, B4, B9, B11, B12, C2, C3, C10, C11, D3, D10, E1, E12, F1, F2, F3, F4, F5, F6, F7, F8, F9, F10, F11, F12 | AGND     | Ground | Analog Ground  |
| H1, H2, H3, H4, H5, H6, H7, H8, H9, H10, H11, H12  | DRVDD    | Supply | Digital Output Driver Supply (1.8 V Nominal)             |
| G1, G2, G3, G4, G5, G6, G7, G8, G9, G10, G11, G12  | DRGND    | Ground | Digital Output Driver Ground                             |
| A7   | CLK+     | Input  | ADC Clock Input—True                                     |
| A6   | CLK-     | Input  | ADC Clock Input—Complement                               |
| C12  | VIN+A    | Input  | Differential Analog Input Pin (+) for Channel A          |
| D12  | VIN-A    | Input  | Differential Analog Input Pin (-) for Channel A          |
| D11  | VCMA     | Output | Common-Mode Level Bias Output for Analog Input Channel A |
| A11  | VIN+B    | Input  | Differential Analog Input Pin (+) for Channel B          |
| A10  | VIN-B    | Input  | Differential Analog Input Pin (-) for Channel B          |
| B10  | VCMB     | Output | Common-Mode Level Bias Output for Analog Input Channel B |
| A2   | VIN+C    | Input  | Differential Analog Input Pin (+) for Channel C          |
| A3   | VIN-C    | Input  | Differential Analog Input Pin (-) for Channel C          |
| B3   | VCMC     | Output | Common-Mode Level Bias Output for Analog Input Channel C |
| C1   | VIN+D    | Input  | Differential Analog Input Pin (+) for Channel D          |
| D1   | VIN-D    | Input  | Differential Analog Input Pin (-) for Channel D          |
| D2   | VCMD     | Output | Common-Mode Level Bias Output for Analog Input Channel D |
| K7   | D0+AB    | Output | Channel A and Channel B LVDS Output Data 0—True          |
| J7   | D0-AB    | Output | Channel A and Channel B LVDS Output Data 0—Complement    |

| Pin No. | Mnemonic | Type         | Description  |
|---------|----------|--------------|--|
| M7      | D1+AB    | Output       | Channel A and Channel B LVDS Output Data 1—True                  |
| L7      | D1–AB    | Output       | Channel A and Channel B LVDS Output Data 1—Complement            |
| K8      | D2+AB    | Output       | Channel A and Channel B LVDS Output Data 2—True                  |
| J8      | D2–AB    | Output       | Channel A and Channel B LVDS Output Data 2—Complement            |
| M8      | D3+AB    | Output       | Channel A and Channel B LVDS Output Data 3—True                  |
| L8      | D3–AB    | Output       | Channel A and Channel B LVDS Output Data 3—Complement            |
| K9      | D4+AB    | Output       | Channel A and Channel B LVDS Output Data 4—True                  |
| J9      | D4–AB    | Output       | Channel A and Channel B LVDS Output Data 4—Complement            |
| M9      | D5+AB    | Output       | Channel A and Channel B LVDS Output Data 5—True                  |
| L9      | D5–AB    | Output       | Channel A and Channel B LVDS Output Data 5—Complement            |
| K10     | D6+AB    | Output       | Channel A and Channel B LVDS Output Data 6—True                  |
| J10     | D6–AB    | Output       | Channel A and Channel B LVDS Output Data 6—Complement            |
| M10     | D7+AB    | Output       | Channel A and Channel B LVDS Output Data 7—True                  |
| L10     | D7–AB    | Output       | Channel A and Channel B LVDS Output Data 7—Complement            |
| K11     | D8+AB    | Output       | Channel A and Channel B LVDS Output Data 8—True                  |
| J11     | D8–AB    | Output       | Channel A and Channel B LVDS Output Data 8—Complement            |
| M11     | D9+AB    | Output       | Channel A and Channel B LVDS Output Data 9—True                  |
| L11     | D9–AB    | Output       | Channel A and Channel B LVDS Output Data 9—Complement            |
| K12     | D10+AB   | Output       | Channel A and Channel B LVDS Output Data 10—True                 |
| J12     | D10–AB   | Output       | Channel A and Channel B LVDS Output Data 10—Complement           |
| M12     | DCO+AB   | Output       | Data Clock LVDS Output for Channel A and Channel B—True          |
| L12     | DCO–AB   | Output       | Data Clock LVDS Output for Channel A and Channel B—Complement    |
| K1      | D0+CD    | Output       | Channel C and Channel D LVDS Output Data 0—True                  |
| J1      | D0–CD    | Output       | Channel C and Channel D LVDS Output Data 0—Complement            |
| M1      | D1+CD    | Output       | Channel C and Channel D LVDS Output Data 1—True                  |
| L1      | D1–CD    | Output       | Channel C and Channel D LVDS Output Data 1—Complement            |
| K2      | D2+CD    | Output       | Channel C and Channel D LVDS Output Data 2—True                  |
| J2      | D2–CD    | Output       | Channel C and Channel D LVDS Output Data 2—Complement            |
| M2      | D3+CD    | Output       | Channel C and Channel D LVDS Output Data 3—True                  |
| L2      | D3–CD    | Output       | Channel C and Channel D LVDS Output Data 3—Complement            |
| K3      | D4+CD    | Output       | Channel C and Channel D LVDS Output Data 4—True                  |
| J3      | D4–CD    | Output       | Channel C and Channel D LVDS Output Data 4—Complement            |
| M3      | D5+CD    | Output       | Channel C and Channel D LVDS Output Data 5—True                  |
| L3      | D5–CD    | Output       | Channel C and Channel D LVDS Output Data 5—Complement            |
| K4      | D6+CD    | Output       | Channel C and Channel D LVDS Output Data 6—True                  |
| J4      | D6–CD    | Output       | Channel C and Channel D LVDS Output Data 6—Complement            |
| M4      | D7+CD    | Output       | Channel C and Channel D LVDS Output Data 7—True                  |
| L4      | D7–CD    | Output       | Channel C and Channel D LVDS Output Data 7—Complement            |
| K5      | D8+CD    | Output       | Channel C and Channel D LVDS Output Data 8—True                  |
| J5      | D8–CD    | Output       | Channel C and Channel D LVDS Output Data 8—Complement            |
| M5      | D9+CD    | Output       | Channel C and Channel D LVDS Output Data 9—True                  |
| L5      | D9–CD    | Output       | Channel C and Channel D LVDS Output Data 9—Complement            |
| K6      | D10+CD   | Output       | Channel C and Channel D LVDS Output Data 10—True                 |
| J6      | D10–CD   | Output       | Channel C and Channel D LVDS Output Data 10—Complement           |
| M6      | DCO+CD   | Output       | Data Clock LVDS Output for Channel C and Channel D—True          |
| L6      | DCO–CD   | Output       | Data Clock LVDS Output for Channel C and Channel D—Complement    |
| C9      | MODE     | Input        | Mode Select Pin (Logic Low Enables NSR; Logic High Disables NSR) |
| C8      | SYNC     | Input        | Digital Synchronization Pin                                      |
| C7      | PDWN     | Input        | Power-Down Input (Active High)                                   |
| C6      | SCLK     | Input        | SPI Clock  |
| C5      | SDIO     | Input/output | SPI Data   |
| C4      | CSB      | Input        | SPI Chip Select (Active Low)                                     |

# TYPICAL PERFORMANCE CHARACTERISTICS

AVDD = 1.8 V, DRVDD = 1.8 V, sample rate = 185 MSPS, 1.75 V p-p differential input, VIN = -1.0 dBFS, 32k sample, TA = 25°C, unless otherwise noted.

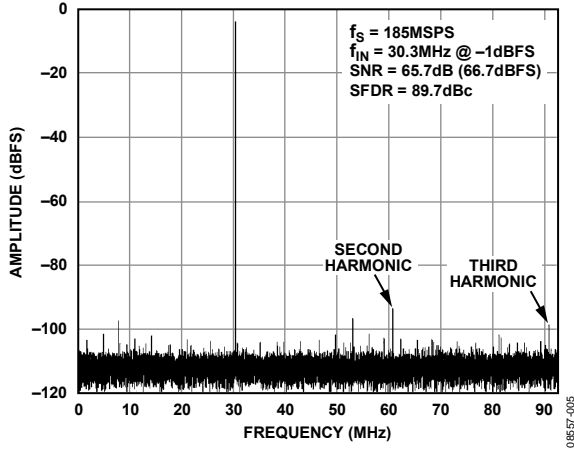


Figure 5. Single-Tone FFT with  $f_{IN} = 30.3$  MHz

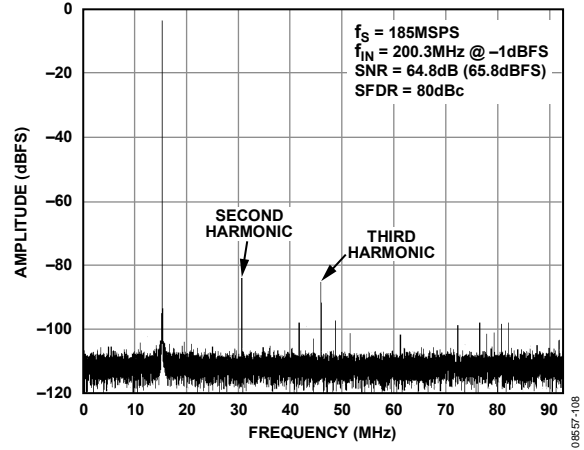


Figure 8. Single-Tone FFT with  $f_{IN} = 200.3$  MHz

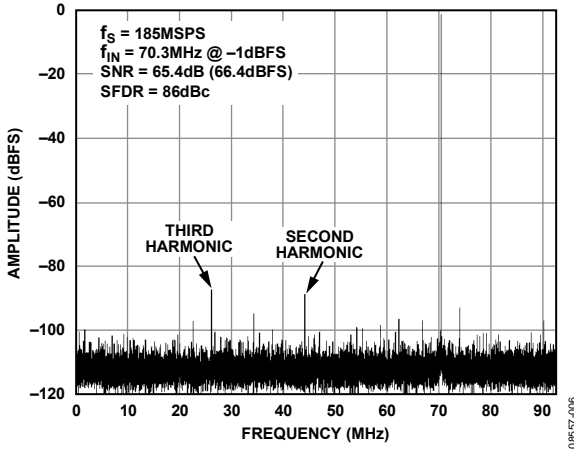


Figure 6. Single-Tone FFT with  $f_{IN} = 70.3$  MHz

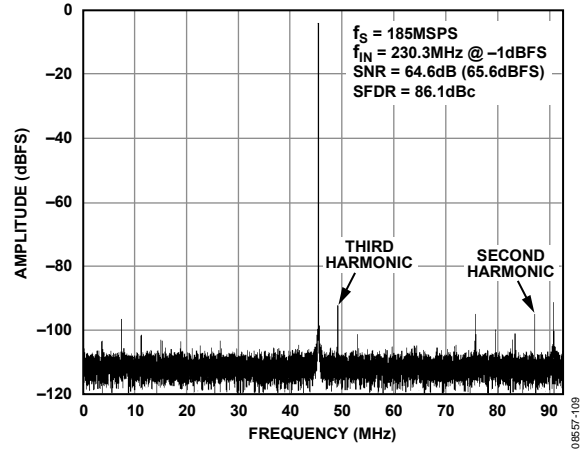


Figure 9. Single-Tone FFT with  $f_{IN} = 230.3$  MHz

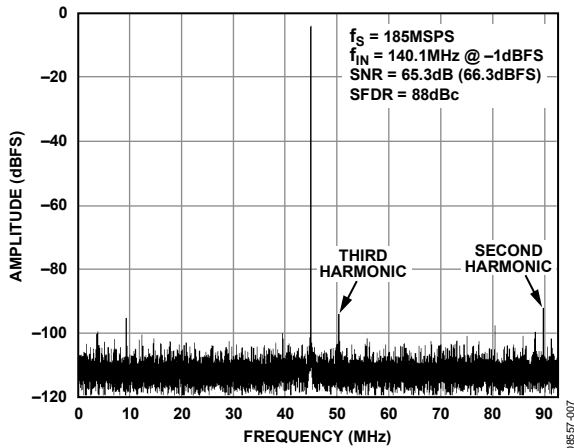


Figure 7. Single-Tone FFT with  $f_{IN} = 140.1$  MHz

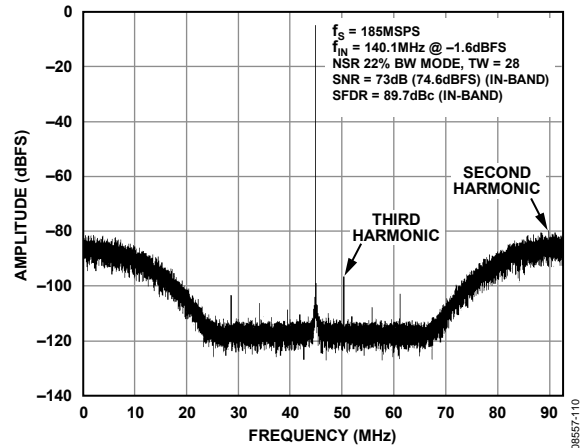


Figure 10. Single-Tone FFT with  $f_{IN} = 140.1$  MHz, NSR Enabled in 22% BW Mode with Tuning Word = 28

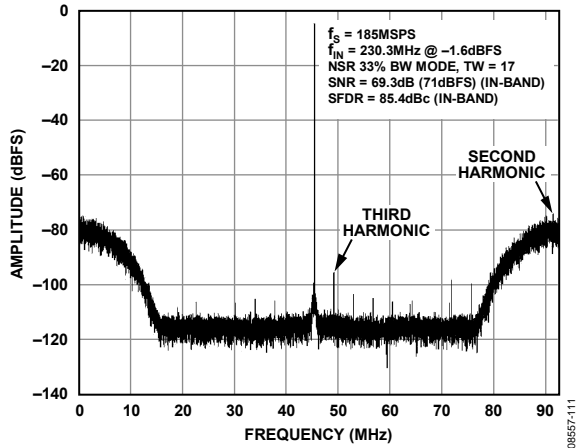


Figure 11. Single-Tone FFT with  $f_{IN} = 230.3$  MHz, NSR Enabled in 33% BW Mode with Tuning Word = 17

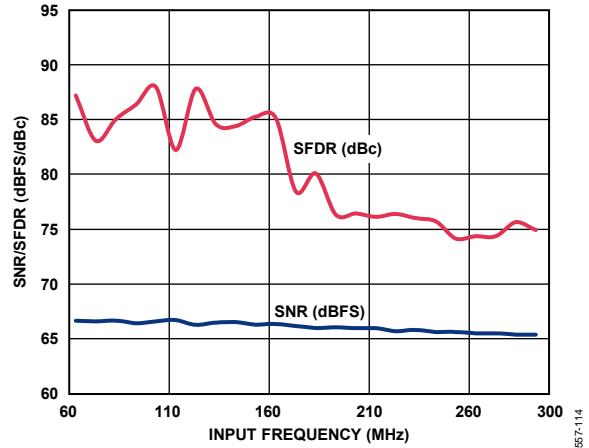


Figure 14. Single-Tone SNR/SFDR vs. Input Frequency ( $f_{IN}$ ) with 2.0 V p-p Full Scale

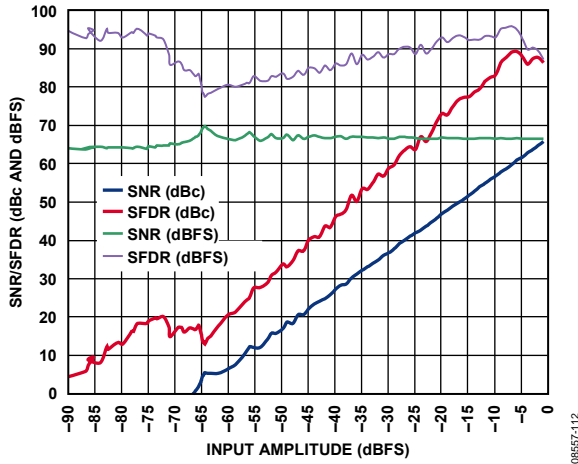


Figure 12. Single-Tone SNR/SFDR vs. Input Amplitude ( $A_{IN}$ ) with  $f_{IN} = 70.3$  MHz

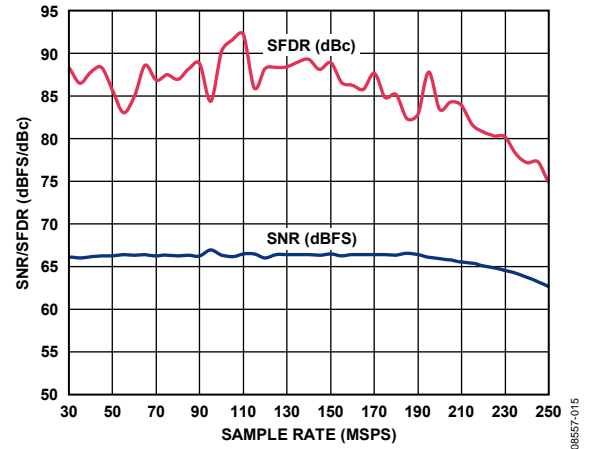


Figure 15. Single-Tone SNR/SFDR vs. Sample Rate ( $f_s$ ) with  $f_{IN} = 70.1$  MHz

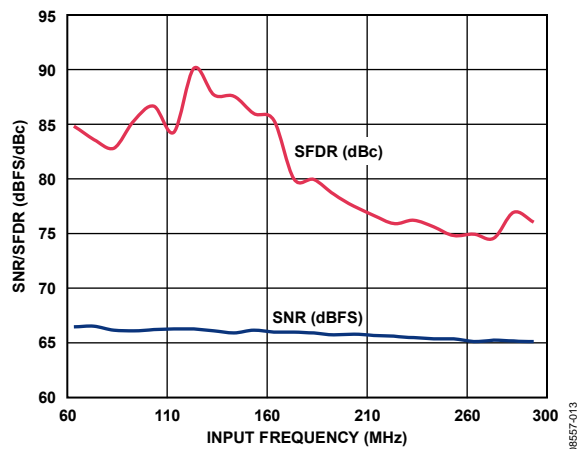


Figure 13. Single-Tone SNR/SFDR vs. Input Frequency ( $f_{IN}$ ) with 1.75 V p-p Full Scale

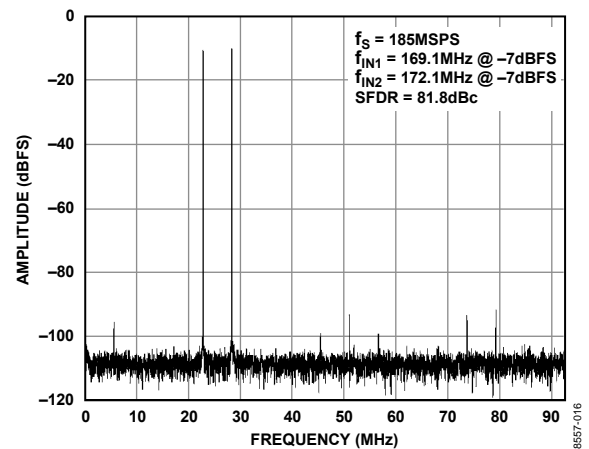


Figure 16. Two-Tone FFT with  $f_{IN1} = 169.1$  MHz and  $f_{IN2} = 172.1$  MHz

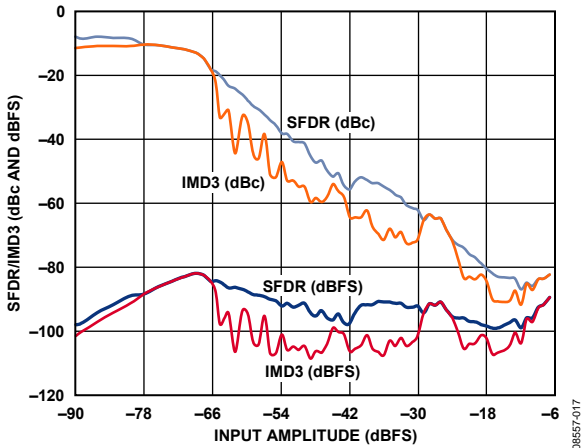


Figure 17. Two-Tone SFDR/IMD3 vs. Input Amplitude ( $A_{IN}$ ) with  $f_{IN1} = 169.1$  MHz and  $f_{IN2} = 172.1$  MHz

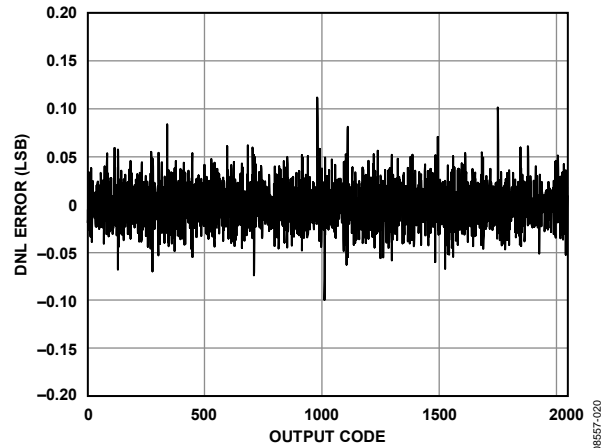


Figure 20. DNL with  $f_{IN} = 30.3$  MHz

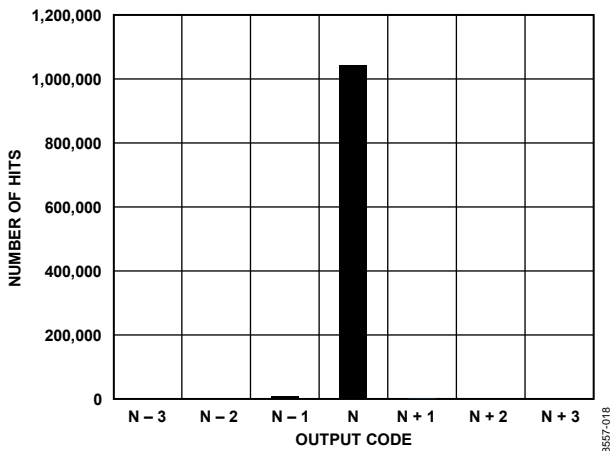


Figure 18. Grounded Input Histogram

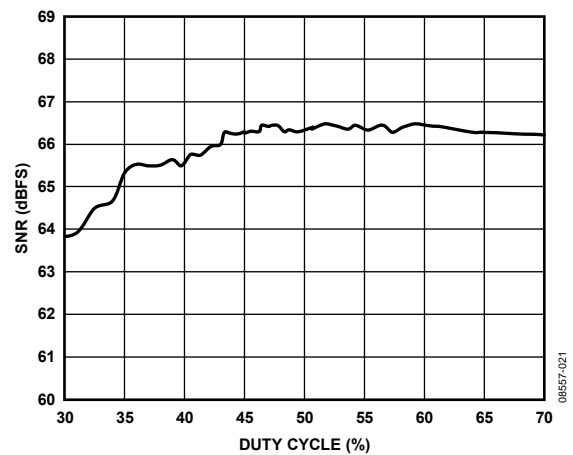


Figure 21. SNR vs. Duty Cycle with  $f_{IN} = 10.3$  MHz

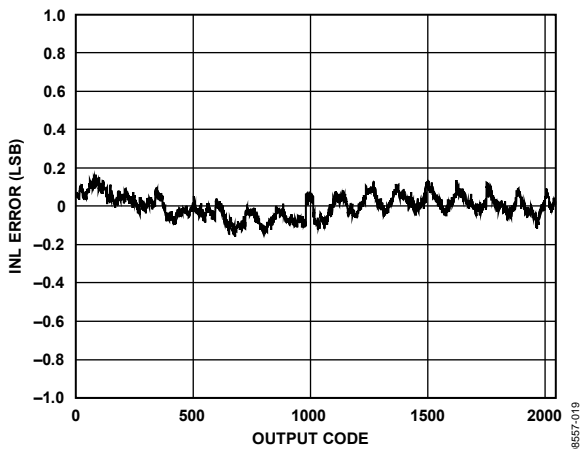


Figure 19. INL with  $f_{IN} = 30.3$  MHz

# EQUIVALENT CIRCUITS

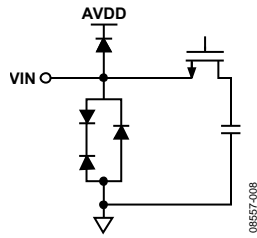


Figure 22. Equivalent Analog Input Circuit

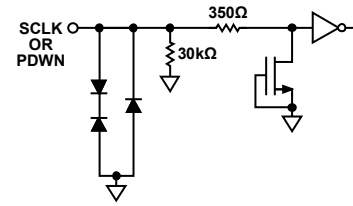


Figure 26. Equivalent SCLK and PDWN Input Circuit

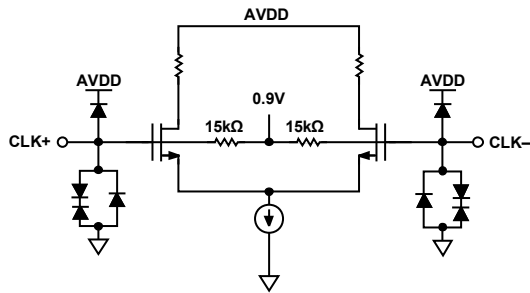


Figure 23. Equivalent Clock Input Circuit

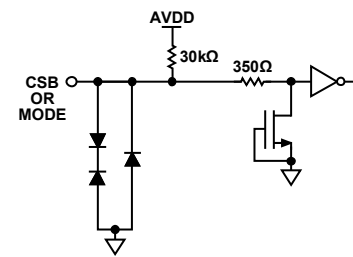


Figure 27. Equivalent CSB and MODE Input Circuit

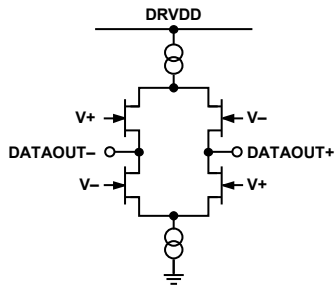


Figure 24. Equivalent LVDS Output Circuit

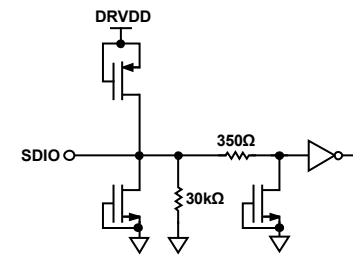


Figure 28. Equivalent SDIO Circuit

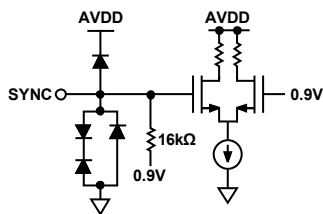


Figure 25. Equivalent SYNC Input Circuit

## THEORY OF OPERATION

### ADC ARCHITECTURE

The AD6657 architecture consists of quad front-end sample-and-hold circuits, followed by pipelined, switched-capacitor ADCs. The quantized outputs from each stage are combined into a final 14-bit result in the digital correction logic. Alternatively, the 14-bit result can be processed through the noise shaping requantizer (NSR) block before it is sent to the digital correction logic.

The pipelined architecture permits the first stage to operate on a new input sample and the remaining stages to operate on the preceding samples. Sampling occurs on the rising edge of the clock.

Each stage of the pipeline, excluding the last, consists of a low resolution flash ADC connected to a switched-capacitor digital-to-analog converter (DAC) and an interstage residue amplifier (MDAC). The residue amplifier magnifies the difference between the reconstructed DAC output and the flash input for the next stage in the pipeline. One bit of redundancy is used in each stage to facilitate digital correction of flash errors. The last stage simply consists of a flash ADC.

The input stage of each channel contains a differential sampling circuit that can be ac- or dc-coupled in differential or single-ended modes. The output staging block aligns the data, corrects errors, and passes the data to the output buffers. The output buffers are powered from a separate supply, allowing adjustment of the output drive current. During power-down, the output buffers go into a high impedance state.

The AD6657 quad IF receiver can simultaneously digitize four channels, making it ideal for diversity reception and digital pre-distortion (DPD) observation paths in telecommunication systems.

Synchronization capability is provided to allow synchronized timing between multiple channels or multiple devices.

Programming and control of the AD6657 are accomplished using a 3-wire SPI-compatible serial interface.

### ANALOG INPUT CONSIDERATIONS

The analog input to the AD6657 is a differential switched-capacitor circuit that has been designed for optimum performance while processing a differential input signal.

The clock signal alternatively switches the input between sample mode and hold mode (see Figure 29). When the input is switched to sample mode, the signal source must be capable of charging the sample capacitors and settling within 1/2 of a clock cycle.

A small resistor in series with each input can help reduce the peak transient current required from the output stage of the driving source. A shunt capacitor can be placed across the inputs to provide dynamic charging currents. This passive network creates a low-pass filter at the ADC input; therefore, the precise values are dependent on the application.

In intermediate frequency (IF) undersampling applications, any shunt capacitors should be reduced. In combination with the driving source impedance, the shunt capacitors limit the input bandwidth. For more information on this subject, see Application Note AN-742, *Frequency Domain Response of Switched-Capacitor ADCs*; Application Note AN-827, *A Resonant Approach to Interfacing Amplifiers to Switched-Capacitor ADCs*; and the *Analog Dialogue* article, “Transformer-Coupled Front-End for Wideband A/D Converters” (see [www.analog.com](http://www.analog.com)).

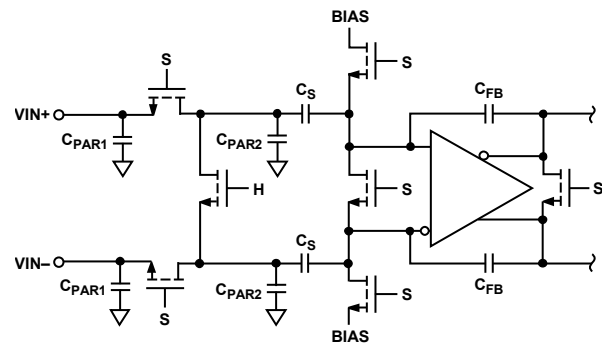


Figure 29. Switched-Capacitor Input

For best dynamic performance, the source impedances driving the VIN+ and VIN– pins should be matched.

An internal differential reference buffer creates positive and negative reference voltages that define the input span of the ADC core. The span of the ADC core is set by this buffer to  $2 \times V_{REF}$ .

### Input Common Mode

The analog inputs of the AD6657 are not internally dc biased. In ac-coupled applications, the user must provide this bias externally. An on-board common-mode voltage reference is included in the design and is available from the VCMx pins. Optimum performance is achieved when the common-mode voltage of the analog input is set by the VCMx pin voltage (typically  $0.5 \times AVDD$ ). The VCMx pins must be decoupled to ground by a 0.1  $\mu\text{F}$  capacitor.



**Differential Input Configurations**

Optimum performance is achieved when driving the AD6657 in a differential input configuration. For baseband applications, the AD8138, ADA4937-2, and ADA4938-2 differential drivers provide excellent performance and a flexible interface to the ADC.

The output common-mode voltage of the ADA4938-2 is easily set with the VCMx pin of the AD6657 (see Figure 30), and the driver can be configured in a Sallen-Key filter topology to provide band limiting of the input signal.

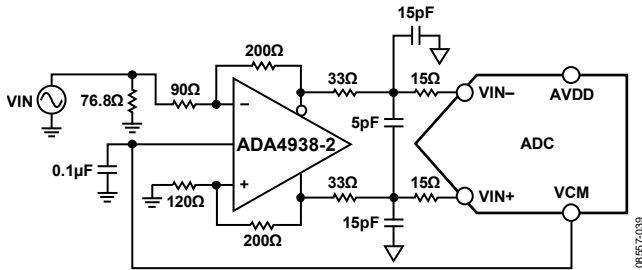


Figure 30. Differential Input Configuration Using the ADA4938-2

For baseband applications where SNR is a key parameter, differential transformer coupling is the recommended input configuration. An example is shown in Figure 31. To bias the analog input, the VCM voltage can be connected to the center tap of the secondary winding of the transformer.

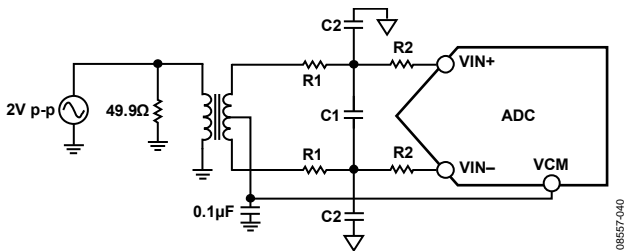


Figure 31. Differential Transformer-Coupled Configuration

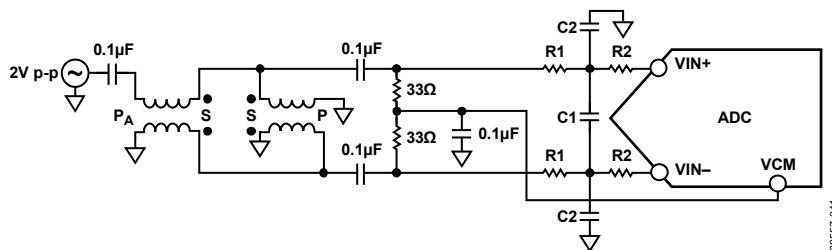


Figure 32. Differential Double Balun Input Configuration

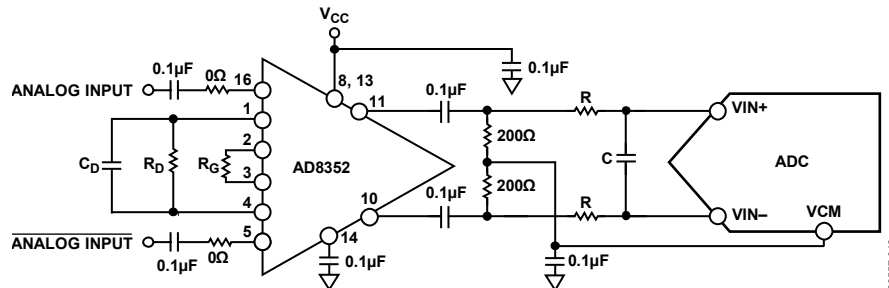


Figure 33. Differential Input Configuration Using the AD8352

The signal characteristics must be considered when selecting a transformer. Most RF transformers saturate at frequencies below a few megahertz (MHz). Excessive signal power can also cause core saturation, which leads to distortion.

At input frequencies in the second Nyquist zone and above, the noise performance of most amplifiers is not adequate to achieve the true SNR performance of the AD6657. For applications in which SNR is a key parameter, differential double balun coupling is the recommended input configuration (see Figure 32). In this configuration, the input is ac-coupled and the CML is provided to each input through a 33 Ω resistor. These resistors compensate for losses in the input baluns to provide a 50 Ω impedance to the driver.

In the double balun and transformer configurations, the value of the input capacitors and resistors is dependent on the input frequency and source impedance and may need to be reduced or removed. Table 10 lists recommended values to set the RC network. At higher input frequencies, good performance can be achieved by using a ferrite bead in series with a resistor and removing the capacitors. However, these values are dependent on the input signal and should be used only as a starting guide.

**Table 10. Example RC Network**

| Frequency Range (MHz) | R1 Series (Each)  | C1 Differential | R2 Series (Each) | C2 Shunt (Each) |
|-----------------------|-------------------|-----------------|------------------|-----------------|
| 0 to 100              | 33 Ω              | 5 pF            | 15 Ω             | 15 pF           |
| 100 to 200            | 10 Ω              | 5 pF            | 10 Ω             | 10 pF           |
| 100 to 300            | 10 Ω <sup>1</sup> | Remove          | 66 Ω             | Remove          |

<sup>1</sup> In this configuration, R1 is a ferrite bead with a value of 10 Ω @ 100 MHz.

An alternative to using a transformer-coupled input at frequencies in the second Nyquist zone is to use the AD8352 differential driver (see Figure 33). For more information, see the AD8352 data sheet.

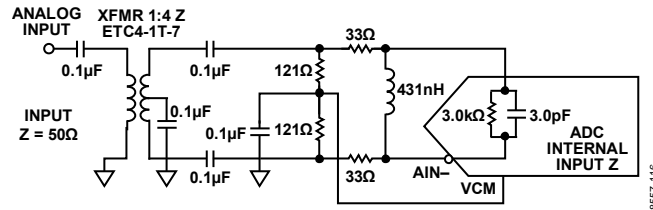
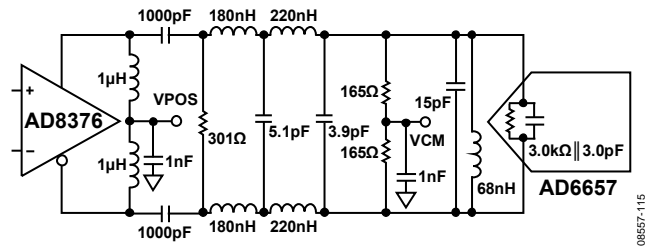


Figure 34. 1:4 Transformer Passive Configuration



NOTES  
 1. ALL INDUCTORS ARE COILCRAFT 0603CS COMPONENTS WITH THE EXCEPTION OF THE 1µH CHOKE INDUCTORS (0603LS).

Figure 35. Active Front-End Configuration Using the AD8376

For the popular IF band of 140 MHz, Figure 34 shows an example of a 1:4 transformer passive configuration where a differential inductor is used to resonate with the internal input capacitance of the AD6657. This configuration realizes excellent noise and distortion performance. Figure 35 shows an example of an active front-end configuration using the AD8376 dual VGA. This configuration is recommended when signal gain is required.

**CLOCK INPUT CONSIDERATIONS**

For optimum performance, the AD6657 sample clock inputs, CLK+ and CLK-, should be clocked with a differential signal. The signal is typically ac-coupled into the CLK+ and CLK- pins via a transformer or capacitors. These pins are biased internally (see Figure 36) and require no external bias.

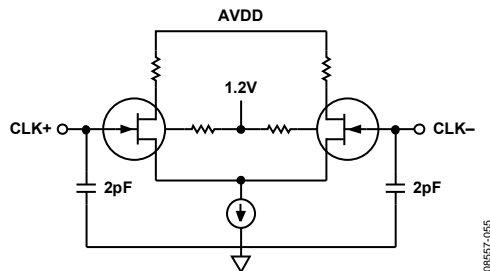


Figure 36. Equivalent Clock Input Circuit

**Clock Input Options**

The AD6657 has a very flexible clock input structure. The clock input can be a CMOS, LVDS, LVPECL, or sine wave signal. Regardless of the type of signal being used, clock source jitter is of the most concern (see the Jitter Considerations section).

Figure 37 and Figure 38 show two preferred methods for clocking the AD6657 (at clock rates up to 625 MHz). A low jitter clock source is converted from a single-ended signal to a differential signal using either an RF balun or an RF transformer.

The RF balun configuration is recommended for clock frequencies between 125 MHz and 625 MHz, and the RF transformer configuration is recommended for clock frequencies from 10 MHz to 200 MHz. The back-to-back Schottky diodes across the transformer/balun secondary limit clock excursions into the AD6657 to approximately 0.8 V p-p differential.

This limit helps to prevent the large voltage swings of the clock from feeding through to other portions of the AD6657 while preserving the fast rise and fall times of the signal that are critical to a low jitter performance.

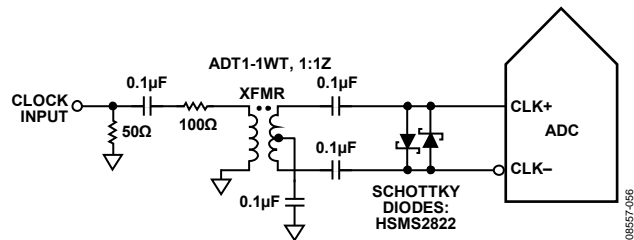


Figure 37. Transformer-Coupled Differential Clock (Up to 200 MHz)

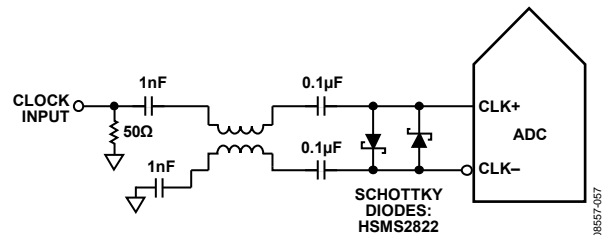


Figure 38. Balun-Coupled Differential Clock (Up to 625 MHz)

If a low jitter clock source is not available, another option is to ac-couple a differential PECL signal to the sample clock input pins, as shown in Figure 39. The AD9510/AD9511/AD9512/AD9513/AD9514/AD9515/AD9516 clock drivers offer excellent jitter performance.

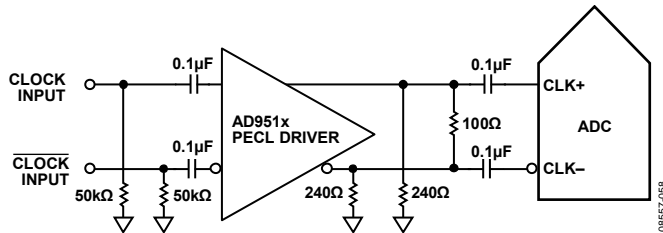


Figure 39. Differential PECL Sample Clock (Up to 625 MHz)

A third option is to ac-couple a differential LVDS signal to the sample clock input pins, as shown in Figure 40. The AD9510/AD9511/AD9512/AD9513/AD9514/AD9515/AD9516 clock drivers offer excellent jitter performance.

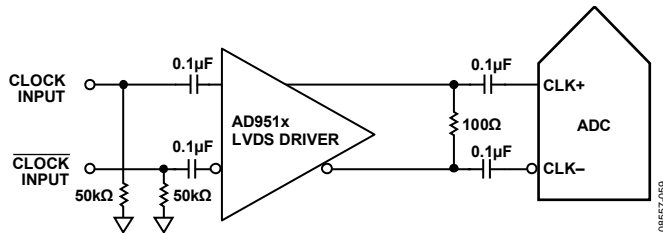


Figure 40. Differential LVDS Sample Clock (Up to 625 MHz)

In some applications, it may be acceptable to drive the sample clock inputs with a single-ended CMOS signal. In such applications, the CLK+ pin should be driven directly from a CMOS gate, and the CLK- pin should be bypassed to ground with a 0.1 µF capacitor in parallel with a 39 kΩ resistor (see Figure 41).

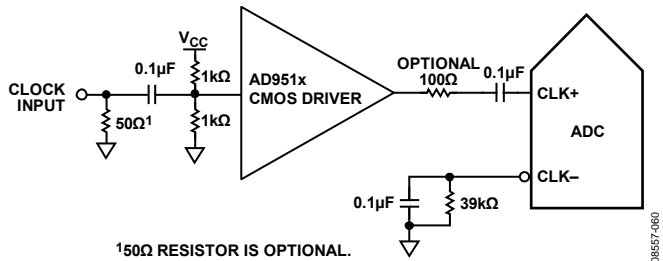
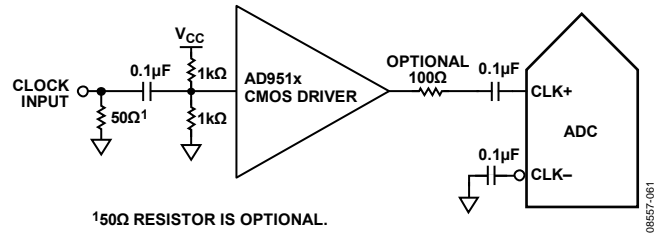


Figure 41. Single-Ended 1.8 V CMOS Input Clock (Up to 200 MHz)

CLK+ can be driven directly from a CMOS gate. Although the CLK+ input circuit supply is AVDD (1.8 V), this input is designed to withstand input voltages of up to 3.6 V, making the selection of the drive logic voltage very flexible (see Figure 42).



150Ω RESISTOR IS OPTIONAL.

Figure 42. Single-Ended 3.3 V CMOS Input Clock (Up to 200 MHz)

### Input Clock Divider

The AD6657 contains an input clock divider with the ability to divide the input clock by integer values from 1 to 8.

The AD6657 clock divider can be synchronized using the external SYNC input. Bit 1 of Register 0x3A enables the clock divider to be resynchronized on every SYNC signal. A valid SYNC causes the clock divider to reset to its initial state. This synchronization feature allows multiple parts to have their clock dividers aligned to guarantee simultaneous input sampling.

### Clock Duty Cycle

Typical high speed ADCs use both clock edges to generate a variety of internal timing signals and, as a result, may be sensitive to clock duty cycle. Commonly, a ±5% tolerance is required on the clock duty cycle to maintain dynamic performance characteristics.

The AD6657 contains a duty cycle stabilizer (DCS) that retimes the nonsampling (falling) edge, providing an internal clock signal with a nominal 50% duty cycle. This allows the user to provide a wide range of clock input duty cycles without affecting the performance of the AD6657. Noise and distortion performance are nearly flat for a wide range of duty cycles with the DCS enabled.

Jitter in the rising edge of the input is still of paramount concern and is not easily reduced by the internal stabilization circuit. The duty cycle control loop does not function for clock rates less than 40 MHz nominally. The loop has a time constant associated with it that must be considered in applications in which the clock rate can change dynamically. A wait time of 1.5 µs to 5 µs is required after a dynamic clock frequency increase or decrease before the DCS loop is relocked to the input signal. During the time period that the loop is not locked, the DCS loop is bypassed, and internal device timing is dependent on the duty cycle of the input clock signal.

### Jitter Considerations

High speed, high resolution ADCs are sensitive to the quality of the clock input. The degradation in SNR from the low frequency SNR ( $SNR_{LF}$ ) at a given input frequency ( $f_{IN}$ ) due to jitter ( $t_{J_{RMS}}$ ) can be calculated by

$$SNR_{HF} = -10\log[(2\pi \times f_{IN} \times t_{J_{RMS}})^2 + 10^{(-SNR_{LF}/10)}]$$

In the equation, the rms aperture jitter represents the clock input jitter specification. IF undersampling applications are particularly sensitive to jitter, as illustrated in Figure 43.

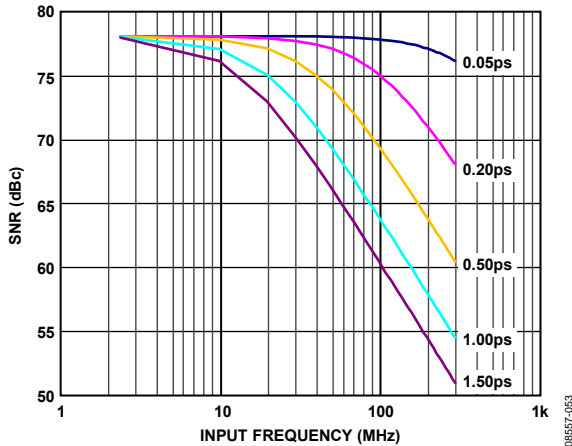


Figure 43. SNR vs. Input Frequency and Jitter

The clock input should be treated as an analog signal in cases in which aperture jitter may affect the dynamic range of the AD6657. Power supplies for clock drivers should be separated from the ADC output driver supplies to avoid modulating the clock signal with digital noise. Low jitter, crystal-controlled oscillators make the best clock sources. If the clock is generated from another type of source (by gating, dividing, or another method), it should be retimed by the original clock at the last step. Refer to Application Note AN-501 and Application Note AN-756 for more information about jitter performance as it relates to ADCs (see [www.analog.com](http://www.analog.com)).

### POWER DISSIPATION AND STANDBY MODE

The power dissipated by the AD6657 is proportional to its clock rate (see Figure 44). The digital power dissipation does not vary significantly because it is determined primarily by the DRVDD supply and the bias current of the LVDS drivers.

Reducing the capacitive load presented to the output drivers can minimize digital power consumption. The data in Figure 44 was taken using the same operating conditions as those used in the Typical Performance Characteristics section, with a 5 pF load on each output driver.

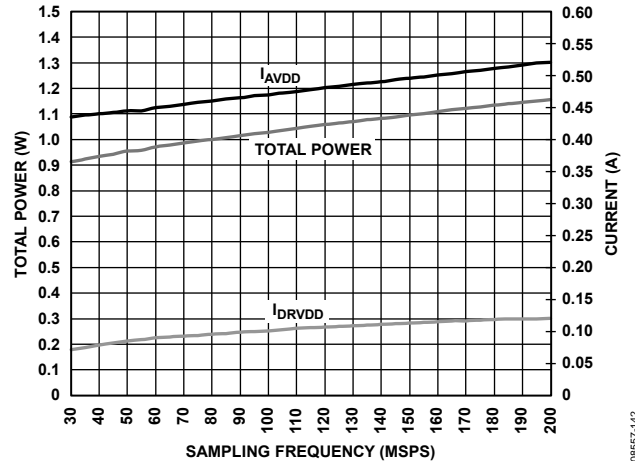


Figure 44. Power and Current vs. Sampling Frequency

By asserting PDWN (either through the SPI port or by asserting the PDWN pin high), the AD6657 is placed in power-down mode. In this state, the ADC typically dissipates 4.5 mW. During power-down, the output drivers are placed in a high impedance state. Asserting the PDWN pin low returns the AD6657 to its normal operating mode. Note that PDWN is referenced to the digital output driver supply (DRVDD) and should not exceed that supply voltage.

Low power dissipation in power-down mode is achieved by shutting down the reference, reference buffer, biasing networks, and clock. Internal capacitors are discharged when entering power-down mode and must be recharged when returning to normal operation. As a result, wake-up time is related to the time spent in power-down mode; shorter power-down cycles result in proportionally shorter wake-up times.

When using the SPI port interface, the user can place the ADC in power-down mode or standby mode. Standby mode allows the user to keep the internal reference circuitry powered when faster wake-up times are required. See the Memory Map Register Descriptions section for more details.

### CHANNEL/CHIP SYNCHRONIZATION

The AD6657 has a SYNC input that offers the user flexible synchronization options for synchronizing the clock divider. The clock divider sync feature is useful for guaranteeing synchronized sample clocks across multiple ADCs.

The SYNC input is internally synchronized to the sample clock; however, to ensure that there is no timing uncertainty between multiple parts, the SYNC input signal should be externally synchronized to the input clock signal, meeting the setup and hold times shown in Table 5. The SYNC input should be driven using a single-ended CMOS-type signal.

## DIGITAL OUTPUTS

The AD6657 output drivers are configured to interface with LVDS outputs using a DRVDD supply voltage of 1.8 V. The output bits are DDR LVDS as shown in Figure 2. Applications that require the ADC to drive large capacitive loads or large fanouts may require external buffers or latches.

As described in Application Note AN-877, *Interfacing to High Speed ADCs via SPI*, the data format can be selected for offset binary or twos complement when using the SPI control.

## TIMING

The AD6657 provides latched data with a latency of nine clock cycles. Data outputs are available one propagation delay ( $t_{PD}$ ) after the rising edge of the clock signal.

The length of the output data lines and the loads placed on them should be minimized to reduce transients within the AD6657. These transients can degrade converter dynamic performance.

The lowest typical conversion rate of the AD6657 is 40 MSPS. At clock rates below 40 MSPS, dynamic performance can degrade.

### Data Clock Output (DCO)

The AD6657 provides a data clock output (DCO) signal intended for capturing the data in an external register. The output data for Channel A and Channel C is valid when DCO is high; the output data for Channel B and Channel D is valid when DCO is low. See Figure 2 for a graphical timing description.

**Table 11. Output Data Format**

| Input (V)   | Condition (V)                  | Offset Binary Output Mode | Twos Complement Mode |
|-------------|--------------------------------|---------------------------|----------------------|
| VIN+ – VIN– | < $-V_{REF} - 0.5 \text{ LSB}$ | 000 0000 0000             | 100 0000 0000        |
| VIN+ – VIN– | = $-V_{REF}$                   | 000 0000 0000             | 100 0000 0000        |
| VIN+ – VIN– | = 0                            | 100 0000 0000             | 000 0000 0000        |
| VIN+ – VIN– | = $+V_{REF} - 1.0 \text{ LSB}$ | 111 1111 1111             | 011 1111 1111        |
| VIN+ – VIN– | > $+V_{REF} - 0.5 \text{ LSB}$ | 111 1111 1111             | 011 1111 1111        |

## NOISE SHAPING REQUANTIZER (NSR)

The AD6657 features a noise shaping requantizer (NSR) to allow higher than 11-bit SNR to be maintained in a subset of the Nyquist band. The harmonic performance of the receiver is unaffected by the NSR feature. When enabled, the NSR contributes an additional 0.6 dB of loss to the input signal, such that a 0 dBFS input is reduced to -0.6 dBFS at the output pins.

The NSR feature can be independently controlled per channel via the SPI or the MODE pin.

Two different bandwidth modes are provided; the mode can be selected from the SPI port. In each of the two modes, the center frequency of the band can be tuned such that IFs can be placed anywhere in the Nyquist band.

### 22% BW MODE (>40 MHz @ 184.32 MSPS)

The first bandwidth mode offers excellent noise performance over 22% of the ADC sample rate (44% of the Nyquist band) and can be centered by setting the NSR mode bits in the NSR control register (Address 0x3C) to 000. In this mode, the useful frequency range can be set using the 6-bit tuning word in the NSR tuning register (Address 0x3E). There are 57 possible tuning words (TW); each step is 0.5% of the ADC sample rate. The following three equations describe the left band edge ( $f_0$ ), the channel center ( $f_{CENTER}$ ), and the right band edge ( $f_1$ ), respectively.

$$f_0 = f_{ADC} \times .005 \times TW$$

$$f_{CENTER} = f_0 + 0.11 \times f_{ADC}$$

$$f_1 = f_0 + 0.22 \times f_{ADC}$$

Figure 45 to Figure 47 show the typical spectrum that can be expected from the AD6657 in the 22% BW mode for three different tuning words.

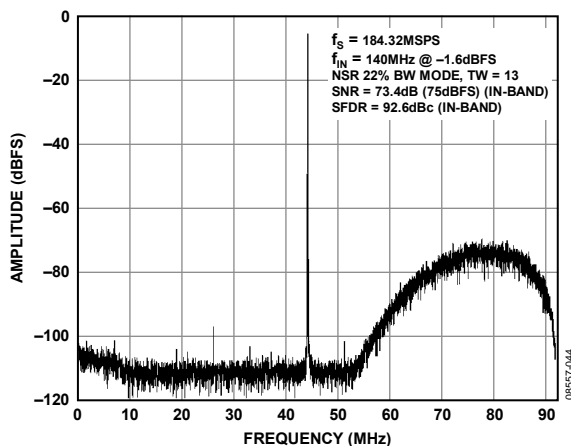


Figure 45. 22% BW Mode, Tuning Word = 13

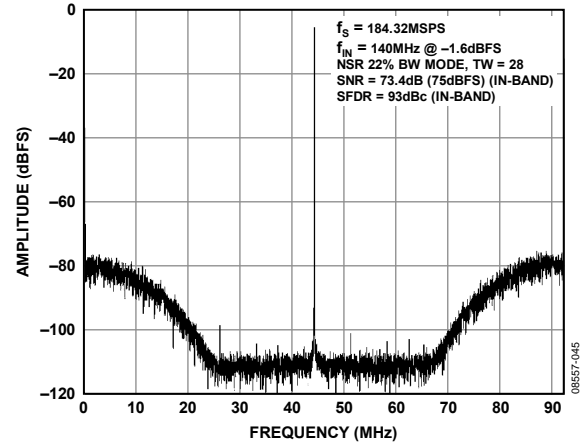


Figure 46. 22% BW Mode, Tuning Word = 28 ( $f_s/4$  Tuning)

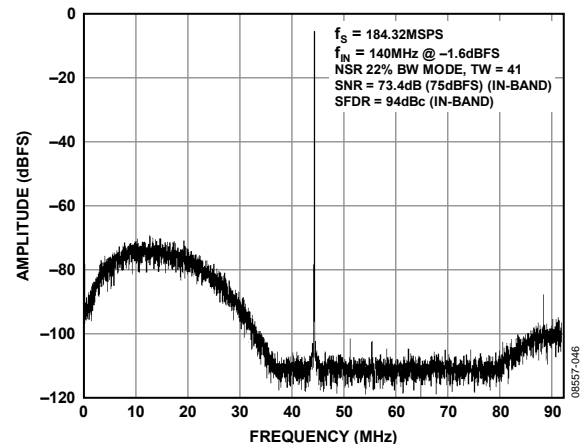


Figure 47. 22% BW Mode, Tuning Word = 41

### 33% BW MODE (>60 MHz @ 184.32 MSPS)

The second bandwidth mode offers excellent noise performance over 33% of the ADC sample rate (66% of the Nyquist band) and can be centered by setting the NSR mode bits in the NSR control register (Address 0x3C) to 001. In this mode, the useful frequency range can be set using the 6-bit tuning word in the NSR tuning register (Address 0x3E). There are 34 possible tuning words (TW); each step is 0.5% of the ADC sample rate. The following three equations describe the left band edge ( $f_0$ ), the channel center ( $f_{CENTER}$ ), and the right band edge ( $f_1$ ), respectively.

$$f_0 = f_{ADC} \times .005 \times TW$$

$$f_{CENTER} = f_0 + 0.165 \times f_{ADC}$$

$$f_1 = f_0 + 0.33 \times f_{ADC}$$

Figure 48 to Figure 50 show the typical spectrum that can be expected from the AD6657 in the 33% BW mode for three different tuning words.

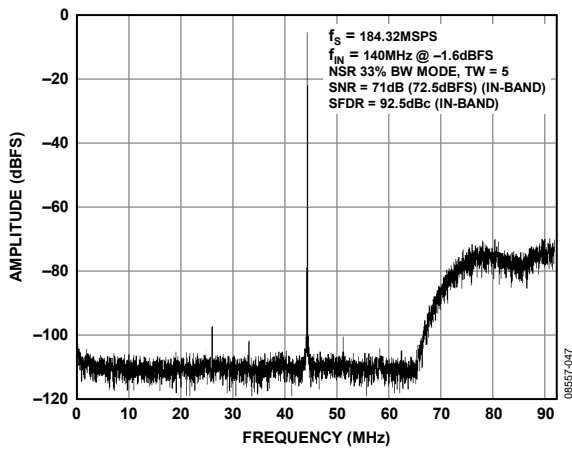


Figure 48. 33% BW Mode, Tuning Word = 5

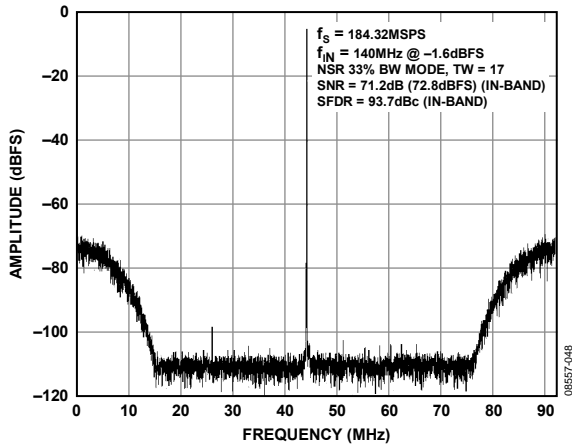


Figure 49. 33% BW Mode, Tuning Word = 17 ( $f_s/4$  Tuning)

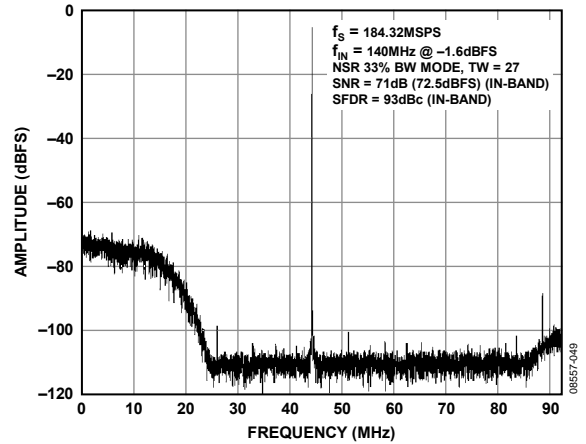


Figure 50. 33% BW Mode, Tuning Word = 27

### MODE PIN

The MODE pin input allows convenient control of the NSR feature. A logic low enables NSR mode and a logic high sets the receiver to straight 11-bit mode with NSR disabled. By default, the MODE pin is pulled high internally to disable the NSR. Each channel can be individually configured to ignore the MODE pin state by writing to Bit 4 of the NSR control register at Address 0x3C. Use of the NSR control register in conjunction with the MODE pin allows for very flexible control of the NSR feature on a per-channel basis.

## BUILT-IN SELF-TEST (BIST) AND OUTPUT TEST

The AD6657 includes built-in test features designed to verify the integrity of each channel and to facilitate board-level debugging. A BIST (built-in self-test) feature is included that verifies the integrity of the digital datapath of the AD6657. Various output test options are also provided to place predictable values on the outputs of the AD6657.

### BUILT-IN SELF-TEST (BIST)

The BIST is a thorough test of the digital portion of the selected AD6657 signal path. When enabled, the test runs from an internal pseudorandom noise (PN) source through the digital datapath starting at the ADC block output. The BIST sequence runs for 512 cycles and stops. The BIST signature value for the selected channel is written to Register 0x24 and Register 0x25.

If more than one channel is BIST-enabled, the channel that is first according to alphabetical order is written to the BIST signature registers. For example, if Channel B and Channel C are BIST-enabled, the results from Channel B are written to the BIST signature registers.

The outputs are not disconnected during this test, so the PN sequence can be observed as it runs. The PN sequence can be continued from its last value or reset from the beginning, based on the value programmed in Register 0x0E, Bit 2. The BIST signature result varies based on the channel configuration.

### OUTPUT TEST MODES

The output test options are shown in Table 13. When an output test mode is enabled, the analog section of the receiver is disconnected from the digital back-end blocks, and the test pattern is run through the output formatting block. Some of the test patterns are subject to output formatting. The seed value for the PN sequence tests can be forced if the PN reset bits are used to hold the generator in reset mode by setting Bit 4 or Bit 5 of Register 0x0D. These tests can be performed with or without an analog signal (if present, the analog signal is ignored), but they require an encode clock. For more information, see Application Note AN-877, *Interfacing to High Speed ADCs via SPI*.



## SERIAL PORT INTERFACE (SPI)

The AD6657 serial port interface (SPI) allows the user to configure the receiver for specific functions or operations through a structured internal register space. The SPI provides added flexibility and customization, depending on the application. Addresses are accessed via the serial port and can be written to or read from via the port. Memory is organized into bytes that can be further divided into fields, which are documented in the Memory Map section. For detailed operational information, see Application Note AN-877, *Interfacing to High Speed ADCs via SPI*.

### CONFIGURATION USING THE SPI

Three pins define the SPI of the AD6657: SCLK, SDIO, and CSB (see Table 12). SCLK (a serial clock) is used to synchronize the read and write data presented from and to the AD6657. SDIO (serial data input/output) is a bidirectional pin that allows data to be sent to and read from the internal memory map registers. CSB (chip select bar) is an active low control that enables or disables the read and write cycles.

**Table 12. Serial Port Interface Pins**

| Pin  | Function   |
|------|--|
| SCLK | Serial clock. Serial shift clock input. SCLK is used to synchronize serial interface reads and writes.   |
| SDIO | Serial data input/output. Bidirectional pin that serves as an input or an output, depending on the instruction being sent and the relative position in the timing frame. |
| CSB  | Chip select bar (active low). This control gates the read and write cycles.  |

The falling edge of the CSB pin, in conjunction with the rising edge of the SCLK pin, determines the start of the framing. An example of the serial timing can be found in Figure 51 (for symbol definitions, see Table 5).

CSB can be held low indefinitely, which permanently enables the device; this is called streaming. CSB can stall high between bytes to allow for additional external timing. When CSB is tied high, SPI functions are placed in high impedance mode.

During an instruction phase, a 16-bit instruction is transmitted. The first bit of the first byte in a serial data transfer frame indicates whether a read command or a write command is issued. Data follows the instruction phase, and its length is determined by the W0 and W1 bits. All data is composed of 8-bit words.

The instruction phase determines whether the serial frame is a read or write operation, allowing the serial port to be used both to program the chip and to read the contents of the on-chip memory. If the instruction is a read operation, the serial data input/output (SDIO) pin changes direction from an input to an output at the appropriate point in the serial frame.

Data can be sent in MSB first mode or in LSB first mode. MSB first is the default mode on power-up and can be changed via the SPI port configuration register. For more information about this and other features, see Application Note AN-877, *Interfacing to High Speed ADCs via SPI*.

### HARDWARE INTERFACE

The pins described in Table 12 constitute the physical interface between the user programming device and the serial port of the AD6657. The SCLK pin and the CSB pin function as inputs when using the SPI interface. The SDIO pin is bidirectional, functioning as an input during the write phase and as an output during readback.

The SPI interface is flexible enough to be controlled by either FPGAs or microcontrollers. One method for SPI configuration is described in detail in Application Note AN-812, *Microcontroller-Based Serial Port Interface (SPI) Boot Circuit*.

The SPI port should not be active during periods when the full dynamic performance of the AD6657 is required. Because the SCLK signal, the CSB signal, and the SDIO signal are typically asynchronous to the ADC clock, noise from these signals can degrade AD6657 performance. If the on-board SPI bus is used for other devices, it may be necessary to provide buffers between this bus and the AD6657 to prevent these signals from transitioning at the receiver inputs during critical sampling periods.

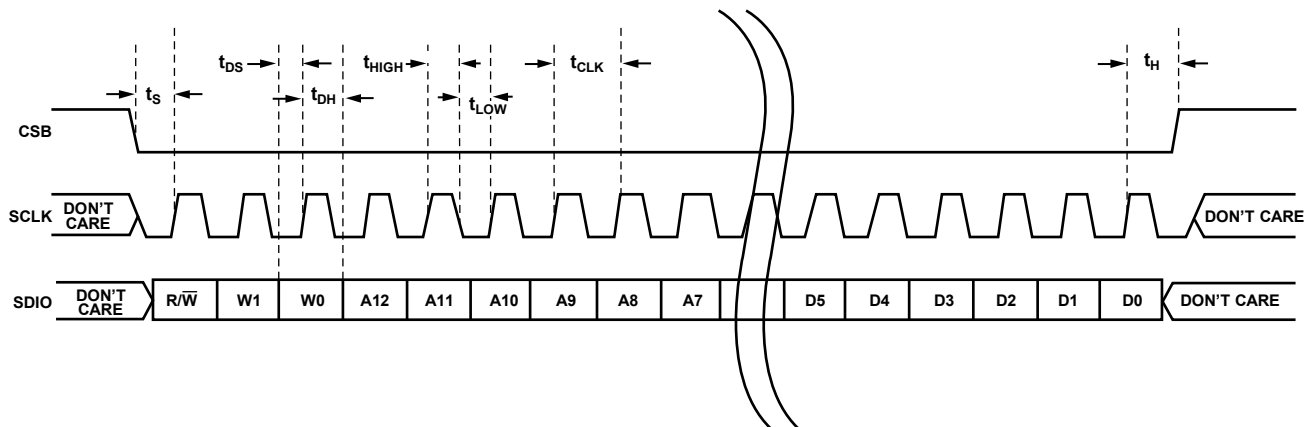


Figure 51. Serial Port Interface Timing Diagram

## MEMORY MAP

### READING THE MEMORY MAP REGISTER TABLE

Each row in the memory map register table has eight bit locations (see Table 13). The memory map is roughly divided into four sections: the chip configuration registers (Address 0x00 and Address 0x01); the channel index and transfer registers (Address 0x05 and Address 0xFF); the ADC function registers, including setup, control, and test (Address 0x08 to Address 0x25); and the digital feature control registers (Address 0x3A to Address 0x3E).

The memory map register table (see Table 13) provides the default hexadecimal value for each hexadecimal address shown. The column with the heading (MSB) Bit 7 is the start of the default hexadecimal value given. Application Note AN-877, *Interfacing to High Speed ADCs via SPI*, documents the functions controlled by Register 0x00 to Register 0xFF. The remaining registers, Register 0x3A to Register 0x3E, are documented in the Memory Map Register Descriptions section.

### Open Locations

All address and bit locations that are not included in Table 13 are not currently supported for this device. Unused bits of a valid address location should be written with 0s. Writing to these locations is required only when part of an address location is open (for example, Address 0x18). If the entire address location is open (for example, Address 0x13), this address location should not be written.

### Default Values

After the AD6657 is reset, critical registers are loaded with default values. The default values for the registers are given in the memory map register table (see Table 13).

### Logic Levels

An explanation of logic level terminology follows:

- “Bit is set” is synonymous with “bit is set to Logic 1” or “writing Logic 1 for the bit.”
- “Clear a bit” is synonymous with “bit is set to Logic 0” or “writing Logic 0 for the bit.”

### Transfer Register Map

Address 0x08 to Address 0x3E are shadowed. Writes to these addresses do not affect part operation until a transfer command is issued by writing 0x01 to Address 0xFF, setting the transfer bit. This allows these registers to be updated internally and simultaneously when the transfer bit is set. The transfer bit is autoclearing.

### Channel-Specific Registers

Some channel setup functions, such as the NSR control function, can be programmed differently for each channel. In these cases, channel address locations are internally duplicated for each channel. These registers and bits are designated in Table 13 as local. Local registers and bits can be accessed by setting the appropriate channel bits in Register 0x05.

If multiple channel bits are set, the subsequent write affects the registers of all selected channels. In a read cycle, only a single channel should be selected to read one of the registers. If multiple channels are selected during a SPI read cycle, the part returns the value for Channel A only. Registers and bits designated as global in Table 13 affect the entire part or the channel features for which there are no independent per-channel settings. The settings in Register 0x05 do not affect the global registers and bits.

**MEMORY MAP REGISTER TABLE**

All address and bit locations that are not included in Table 13 are not currently supported for this device.

**Table 13. Memory Map Registers**

| Addr. (Hex)                          | Register Name                   | (MSB) Bit 7   | Bit 6  | Bit 5  | Bit 4 | Bit 3           | Bit 2  | Bit 1   | (LSB) Bit 0                                | Default Value (Hex)                         | Comments  |
|--------------------------------------|---------------------------------|---|--|--|-------|-----------------|--|---|--|---|---|
| Chip Configuration Registers         |                                 |   |  |  |       |                 |  |   |  |   |   |
| 0x00                                 | SPI port configuration (global) | Open  | LSB first                                      | Soft reset   | 1     | 1               | Soft reset   | LSB first   | Open                                       | 0x18  | Nibbles are mirrored so that LSB first or MSB first mode is set correctly, regardless of shift mode. To control this register, all channel index bits in Register 0x05 must be set. |
| 0x01                                 | Chip ID (global)                | 8-bit chip ID, Bits[7:0]<br>AD6657 = 0x79 (default) |  |  |       |                 |  |   |  | 0x79  | Read only.  |
| Channel Index and Transfer Registers |                                 |   |  |  |       |                 |  |   |  |   |   |
| 0x05                                 | Channel index                   | Enable output port for Channel C and Channel D      | Enable output port for Channel A and Channel B | Open   | Open  | Channel Denable | Channel C enable   | Channel B enable  | Channel A enable                           | 0xCF  | Bits are set to determine which channel on the chip receives the next write command; applies to local registers.  |
| 0xFF                                 | Transfer                        | Open  | Open   | Open   | Open  | Open            | Open   | Open  | SW transfer<br>1 = on<br>0 = off (default) | 0x00  | Synchronously transfers data from the master shift register to the slave.   |
| ADC Function Registers               |                                 |   |  |  |       |                 |  |   |  |   |   |
| 0x08                                 | Power modes                     | Open  | Open   | External power-down pin function (global)<br>0 = full power-down<br>1 = standby  | Open  | Open            | Open   | Internal power-down mode (local)<br>00 = normal operation (default)<br>01 = full power-down<br>10 = standby | 0x00                                       | Determines generic modes of chip operation. |   |
| 0x0B                                 | Clock divide (global)           | Open  | Open   | Clock divide phase<br>000 = 0 input clock cycles delayed<br>001 = 1 input clock cycles delayed<br>010 = 2 input clock cycles delayed |       |                 | Clock divide ratio<br>000 = divide by 1<br>001 = divide by 2<br>010 = divide by 3<br>011 = divide by 4<br>100 = divide by 5<br>101 = divide by 6<br>110 = divide by 7<br>111 = divide by 8 |   |  | 0x00  |   |
| 0x0C                                 | Shuffle mode (local)            | Open  | Open   | Open   | Open  | Open            | Open   | Shuffle mode enable<br>00 = shuffle disabled<br>01 = shuffle enabled  | 0x01                                       | Enables or disables shuffle mode            |   |

| Addr. (Hex) | Register Name                    | (MSB) Bit 7                           | Bit 6 | Bit 5  | Bit 4  | Bit 3  | Bit 2  | Bit 1   | (LSB) Bit 0                                | Default Value (Hex)                       | Comments  |
|-------------|----------------------------------|---------------------------------------|-------|--|--|--|--|---|--|---|---|
| 0x0D        | Test mode (local)                | Open                                  | Open  | Reset long PN generator<br>0 = on<br>1 = off (default)   | Reset short PN generator<br>0 = on<br>1 = off (default)  | Open   | Output test mode<br>000 = off (normal operation)<br>001 = midscale short<br>010 = positive FS<br>011 = negative FS<br>100 = alternating checkerboard<br>101 = PN sequence long<br>110 = PN sequence short<br>111 = 1/0 word toggle |   |  | 0x00                                      | When set, the test data is placed on the output pins in place of normal data. |
| 0x0E        | BIST enable (local)              | Open                                  | Open  | Open   | Open   | Open   | BIST reset<br>0 = on<br>1 = off (default)  | Open  | BIST enable<br>1 = on<br>0 = off (default) | 0x00                                      | When Bit 0 is set, the built-in self-test function is initiated.              |
| 0x10        | Offset adjust (local)            | Open                                  | Open  | Offset adjustment in LSBs from +127 to -128 (twos complement format)<br>011111 = +31 LSB<br>011110 = +30 LSB<br>011101 = +29 LSB<br>...<br>000010 = +2 LSB<br>000001 = +1 LSB<br>000000 = 0 LSB<br>...<br>111111 = -1 LSB<br>111110 = -2 LSB<br>111101 = -3 LSB<br>...<br>100001 = -31 LSB<br>100000 = -32 LSB |  |  |  |   |  | 0x00                                      | Device offset trim.   |
| 0x14        | Output mode (local)              | Open                                  | Open  | Open   | Output enable bar (local)<br>1 = off<br>0 = on   | Open   | Output invert (local)<br>1 = on<br>0 = off   | Output format (local)<br>00 = offset binary<br>01 = twos complement |  | 0x00                                      | Configures the outputs and the format of the data.                            |
| 0x15        | Output adjust (local)            | Open                                  | Open  | Open   | Open   | Output port LVDS drive current<br>0000 = 3.72 mA<br>0001 = 3.5 mA (default)<br>0010 = 3.3 mA<br>0011 = 2.96 mA<br>0100 = 2.82 mA<br>0101 = 2.57 mA<br>0110 = 2.27 mA<br>0111 = 2.0 mA<br>1000 = 2.0 mA |  |   | 0x01                                       | Output current adjustments.               |   |
| 0x16        | Clock phase control (local)      | Invert DCO clock<br>0 = off<br>1 = on | Open  | Open   | Open   | Open   | Open   | Open  | Open                                       | 0x00                                      | When Bit 7 is set, clock polarity is reversed.                                |
| 0x17        | DCO output delay (local)         | DCO delay enable<br>0 = off<br>1 = on | Open  | Open   | Output port DCO clock delay<br>00000 = 100 ps additional delay on the DCO pin<br>00001 = 200 ps additional delay on the DCO pin<br>00010 = 300 ps additional delay on the DCO pin<br>...<br>11101 = 3.0 ns additional delay on the DCO pin<br>11110 = 3.1 ns additional delay on the DCO pin<br>11111 = 3.2 ns additional delay on the DCO pin |  |  |   | 0x00                                       | Enable DCO delay and set the delay time.  |   |
| 0x18        | V <sub>REF</sub> select (global) | Open                                  | Open  | Open   | Internal V <sub>REF</sub> full-scale adjustment<br>Main reference full-scale V <sub>REF</sub> adjustment<br>01111: internal 2.087 V p-p<br>...<br>00001: internal 1.772 V p-p<br>00000: internal 1.75 V p-p<br>...<br>11111: internal 1.727 V p-p<br>...<br>10000: internal 1.383 V p-p  |  |  |   | 0x00                                       | Select adjustments for V <sub>REF</sub> . |   |

| Addr. (Hex)                       | Register Name              | (MSB) Bit 7          | Bit 6 | Bit 5   | Bit 4  | Bit 3  | Bit 2 | Bit 1  | (LSB) Bit 0  | Default Value (Hex) | Comments   |
|-----------------------------------|----------------------------|----------------------|-------|---|--|--|-------|--|--|---------------------|--|
| 0x24                              | BIST signature LSB (local) | BIST Signature[7:0]  |       |   |  |  |       |  |  | 0x00                | Read only.   |
| 0x25                              | BIST signature MSB (local) | BIST Signature[15:8] |       |   |  |  |       |  |  | 0x00                | Read only.   |
| Digital Feature Control Registers |                            |                      |       |   |  |  |       |  |  |                     |  |
| 0x3A                              | Sync control (global)      | Open                 | Open  | Open  | Open   | Open   | Open  | Clock divider sync enable<br>0 = off<br>1 = on | Master sync enable<br>0 = off<br>1 = on  | 0x00                | Control register to synchronize the clock divider. |
| 0x3C                              | NSR control (local)        | Open                 | Open  | Open  | MODE pin disable<br>0 = MODE pin used<br>1 = MODE pin disabled | NSR mode<br>000 = 22% BW mode<br>001 = 33% BW mode |       |  | NSR enable<br>0 = off<br>1 = on<br>(used only if Bit 4 = 1; otherwise ignored) | 0x00                | Noise shaping requantizer (NSR) controls.          |
| 0x3E                              | NSR tuning word (local)    | Open                 | Open  | NSR tuning word<br>See the Noise Shaping Requantizer (NSR) section.<br>Equations for the tuning word are dependent on the NSR mode. |  |  |       |  |  | 0x1C                | NSR frequency tuning word.                         |

## MEMORY MAP REGISTER DESCRIPTIONS

For additional information about functions controlled in Register 0x00 to Register 0xFF, see Application Note AN-877, *Interfacing to High Speed ADCs via SPI*.

### Sync Control (Register 0x3A)

#### Bits[7:2]—Reserved

#### Bit 1—Clock Divider Sync Enable

Bit 1 gates the sync pulse to the clock divider. The sync signal is enabled when Bit 1 is high and Bit 0 is high. This is continuous sync mode.

#### Bit 0—Master Sync Enable

Bit 0 must be high to enable any of the sync functions. If the sync capability is not used, this bit should remain low to conserve power.

### NSR Control (Register 0x3C)

#### Bits[7:5]—Reserved

#### Bit 4—MODE Pin Disable

Bit 4 specifies whether the selected channels will be controlled by the MODE pin. Local registers act on the channels that are selected by the channel index register (Address 0x05).

#### Bits[3:1]—NSR Mode

Bits[3:1] determine the bandwidth mode of the NSR. When Bits[3:1] are set to 000, the NSR is configured for a 22% BW mode that provides enhanced SNR performance over 22% of the sample rate. When Bits[3:1] are set to 001, the NSR is configured for a 33% BW mode that provides enhanced SNR performance over 33% of the sample rate.

#### Bit 0—NSR Enable

The NSR is enabled when Bit 0 is high and disabled when Bit 0 is low. Bit 0 is ignored unless the MODE pin disable bit (Bit 4) is set.

### NSR Tuning Word (Register 0x3E)

#### Bits[7:6]—Reserved

#### Bits[5:0]—NSR Tuning Word

The NSR tuning word sets the band edges of the NSR band. In 22% BW mode, there are 57 possible tuning words; in 33% BW mode, there are 34 possible tuning words. For either mode, each step represents 0.5% of the ADC sample rate. For the equations used to calculate the tuning word based on the BW mode of operation, see the Noise Shaping Requantizer (NSR) section.

## APPLICATIONS INFORMATION

### DESIGN GUIDELINES

Before starting the design and layout of the AD6657 in a system, it is recommended that the designer become familiar with these guidelines, which discuss the special circuit connections and layout requirements needed for certain pins.

#### **Power and Ground Recommendations**

When connecting power to the AD6657, it is recommended that two separate 1.8 V supplies be used. Use one supply for analog (AVDD); use a separate supply for the digital outputs (DRVDD). The AVDD and DRVDD supplies should be isolated with separate decoupling capacitors. Several different decoupling capacitors can be used to cover both high and low frequencies. These capacitors should be located close to the point of entry at the PCB level and close to the pins of the part, with minimal trace length.

A single PCB ground plane should be sufficient when using the AD6657. With proper decoupling and smart partitioning of the PCB analog, digital, and clock sections, optimum performance is easily achieved.

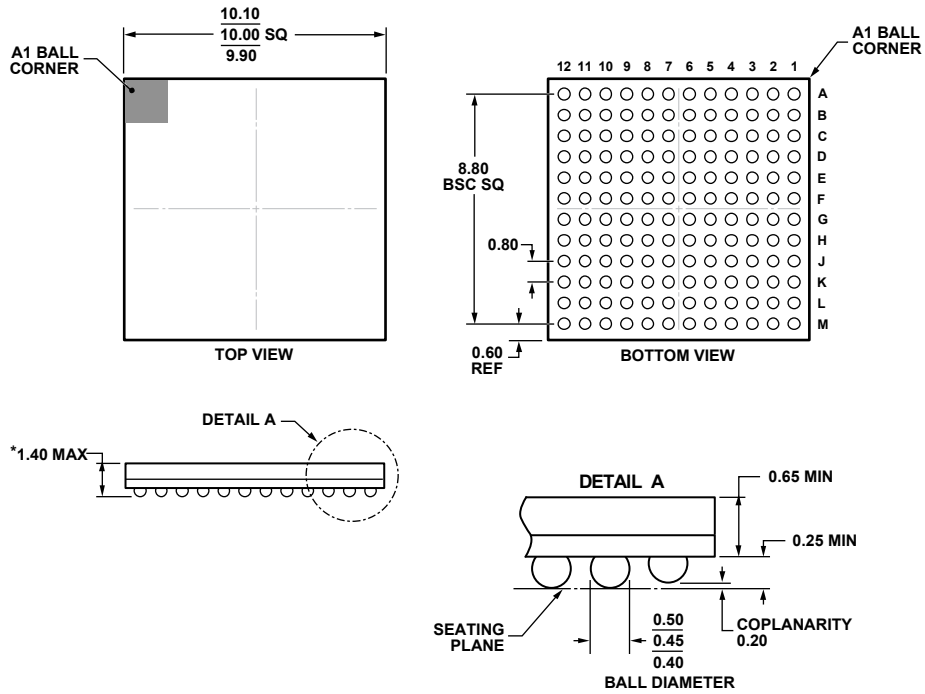
#### **VCMx Pins**

The VCMx pins are provided to set the common-mode level of the analog inputs. The VCMx pins should be decoupled to ground with a 0.1  $\mu$ F capacitor, as shown in Figure 31.

#### **SPI Port**

The SPI port should not be active during periods when the full dynamic performance of the AD6657 is required. Because the SCLK signal, the CSB signal, and the SDIO signal are typically asynchronous to the ADC clock, noise from these signals can degrade AD6657 performance. If the on-board SPI bus is used for other devices, it may be necessary to provide buffers between this bus and the AD6657 to prevent these signals from transitioning at the receiver inputs during critical sampling periods.

# OUTLINE DIMENSIONS



\*COMPLIANT WITH JEDEC STANDARDS MO-275-EEAB-1 WITH EXCEPTION TO PACKAGE HEIGHT.

Figure 52. 144-Ball Chip Scale Package Ball Grid Array [CSP\_BGA] (BC-144-1)  
Dimensions shown in millimeters

10-21-2010-B

## ORDERING GUIDE

| Model <sup>1</sup> | Temperature Range | Package Description                                   | Package Option |
|--------------------|-------------------|---|----------------|
| AD6657BBCZ         | -40°C to +85°C    | 144-Ball Chip Scale Package Ball Grid Array [CSP_BGA] | BC-144-1       |
| AD6657BBCZRL       | -40°C to +85°C    | 144-Ball Chip Scale Package Ball Grid Array [CSP_BGA] | BC-144-1       |
| AD6657EBZ          |                   | Evaluation Board                                      |                |

<sup>1</sup> Z = RoHS Compliant Part.

**NOTES**



Компания «Океан Электроники» предлагает заключение долгосрочных отношений при поставках импортных электронных компонентов на взаимовыгодных условиях!

Наши преимущества:

- Поставка оригинальных импортных электронных компонентов напрямую с производств Америки, Европы и Азии, а так же с крупнейших складов мира;
- Широкая линейка поставок активных и пассивных импортных электронных компонентов (более 30 млн. наименований);
- Поставка сложных, дефицитных, либо снятых с производства позиций;
- Оперативные сроки поставки под заказ (от 5 рабочих дней);
- Экспресс доставка в любую точку России;
- Помощь Конструкторского Отдела и консультации квалифицированных инженеров;
- Техническая поддержка проекта, помощь в подборе аналогов, поставка прототипов;
- Поставка электронных компонентов под контролем ВП;
- Система менеджмента качества сертифицирована по Международному стандарту ISO 9001;
- При необходимости вся продукция военного и аэрокосмического назначения проходит испытания и сертификацию в лаборатории (по согласованию с заказчиком);
- Поставка специализированных компонентов военного и аэрокосмического уровня качества (Xilinx, Altera, Analog Devices, Intersil, Interpoint, Microsemi, Actel, Aeroflex, Peregrine, VPT, Syfer, Eurofarad, Texas Instruments, MS Kennedy, Miteq, Cobham, E2V, MA-COM, Hittite, Mini-Circuits, General Dynamics и др.);

Компания «Океан Электроники» является официальным дистрибьютором и эксклюзивным представителем в России одного из крупнейших производителей разъемов военного и аэрокосмического назначения «**JONHON**», а так же официальным дистрибьютором и эксклюзивным представителем в России производителя высокотехнологичных и надежных решений для передачи СВЧ сигналов «**FORSTAR**».



## JONHON

«**JONHON**» (основан в 1970 г.)

Разъемы специального, военного и аэрокосмического назначения:

(Применяются в военной, авиационной, аэрокосмической, морской, железнодорожной, горно- и нефтедобывающей отраслях промышленности)

«**FORSTAR**» (основан в 1998 г.)

ВЧ соединители, коаксиальные кабели, кабельные сборки и микроволновые компоненты:

(Применяются в телекоммуникациях гражданского и специального назначения, в средствах связи, РЛС, а так же военной, авиационной и аэрокосмической отраслях промышленности).



Телефон: 8 (812) 309-75-97 (многоканальный)

Факс: 8 (812) 320-03-32

Электронная почта: [ocean@oceanchips.ru](mailto:ocean@oceanchips.ru)

Web: <http://oceanchips.ru/>

Адрес: 198099, г. Санкт-Петербург, ул. Калинина, д. 2, корп. 4, лит. А