



Sealed SFP Assemblies Integrated Optical and Electrical Receptacles

106501

The Molex Sealed SFP (Small Form-factor Pluggable) optical and electrical integrated-connection system is designed to maximize valuable real estate on the PCB while providing an environmentally rugged interface

Molex's Sealed SFP system is connected to the customer's PCB using a high-speed, copper-flex assembly from the internal SFP cage, to a board-to-board electrical connector. This extension allows the PCB engineer design flexibility in regards to deciding where the PCB connection is located on the board and reduces the footprint space required on the PCB. The optical, spring-loaded, Electro Magnetic Interference (EMI) shielded cage is designed to accept most industry standard LC based optical SFP transceiver modules. The electrical version accepts the Molex 1000 Base-T SFP adapter (Series 74741).

This unique interconnect system combines multiple components. The panel feed-through receptacle incorporates conductive-sealing gasketing, a panel nut and dust cap, which may be used with either an 'optical module' (see 'D' in photo) assembly or an 'electrical module' (see 'C' in photo) assembly. The removable 'module' assembly contains the SFP cage, power filtering, high-speed copper flex and PCB connector. When assembled to the receptacle, the module is contained within an environmentally durable, IP-67 grade (water and dust protection) industrial interface. The SFP receptacle, including the cage, is compatible with existing industrial cable assemblies, including ODVA* (Open DeviceNet Vendors Association), compliant Industrial Ethernet (copper CAT 5 cabling) and Industrial LC (optical duplex LC) assemblies. The SFP transceiver may be installed from either side of the receptacle, allowing for easy maintenance and upgrade of the SFP after the system is installed.

Features and Benefits

- For the integrated solution, an SFP transceiver can be installed and/or removed from the front or back side of the receptacle allowing for convenient factory installations and easy field upgrades



Left to right: A = Optical Industrial Ethernet Cable, B = Electrical RJ-45 to SFP Transceiver, C = Electrical Sealed SFP Module, D = Optical Sealed SFP Module, E = Optical SFP Transceiver, F = Industrial LC Cable Assembly with Cable Assembly Dust Cap, G = Industrial LC Adapter, H = In-Line Industrial LC Adapter Mated to an Industrial LC Cable Assembly, I = Duplex LC Cable Assembly, J = Sealed SFP Receptacle for Integrated Platforms C and D, K = Simplified SFP Receptacle

Molex also offers a Simplified SFP Receptacle, which allows end users to design their own board layout and transceiver options. The actual transceiver cage is positioned directly into the rear of the receptacle by the customer in accordance with the optical plane and front-end connectivity guidance provided by Molex.

This offers a low-cost alternative that offers complete accessibility of any SFP from the front of an optical node or outdoor enclosure. For more information on Sealed SFP Assemblies, visit: www.molex.com/product/fiber/sealedsf.html.

- Compatible with ODVA compliant optical and copper assemblies accommodating industry standard interface connectors and cable assemblies
- The integrated solution accommodates copper or optical SFP devices allowing for future upgrades or backwards compatibility

- IP-67 rated hardened user interface for providing dust and water protection
- Durable diecast receptacle housing with electrically conductive gasket provides EMI suppression

SPECIFICATIONS

Reference Information

Packaging: Individual Bag
 Mates With: Optical: Industrial LC Cable Assemblies (Series 106059) or Electrical: Industrial Ethernet connectors/cable assemblies (84700 Series)
 Designed In: Millimeters

Mechanical

Durability: >50 mate and demate cycles

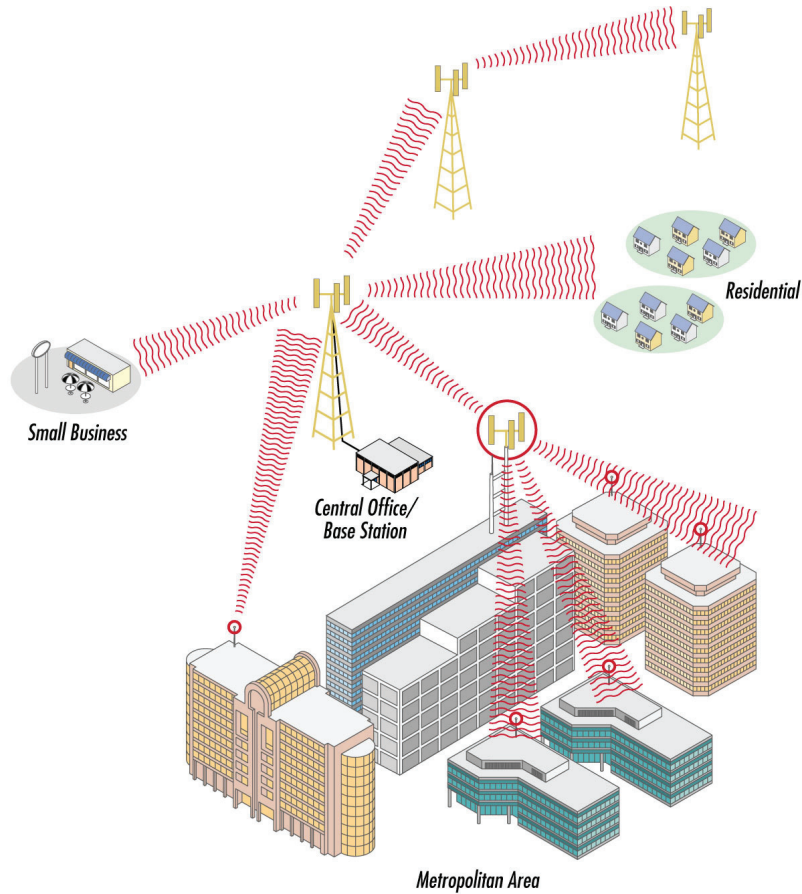
Physical

Housing: Nickel (Ni) plated Zinc die-cast
 Operating Temperature: -40 to +85°C



Sealed SFP Assemblies Integrated Optical and Electrical Receptacles

- Industrial
 - System controls
 - Monitoring
 - Data routers
- Telecommunication
 - Outdoor environment data routers, switches or networking equipment
 - FTTX connections
- Wireless base station and antenna feed
 - WiFi
 - WiMax
 - RRH - LTE (Remote Radio Heads - Long Term Evolution)
- Mobile communications equipment
 - Military
 - Broadcast
- Other Markets
 - BPL (Broadband over power lines)
 - Food Processing
 - Rugged Test Equipment



Industrial SFP assemblies used with WiFi and/or WiMax transmission antennas that can be mounted atop broadcast antennas, large office buildings, and small businesses as well as residential apartments and homes.

ORDERING INFORMATION

Sealed SFP Module Assemblies

Order No.	Protocol	Components	Copper Flex Length
106501-1000	Optical	Receptacle, SFP cage, high-speed copper-flex assembly	0.15m (6.000")
106501-2000	Electrical		

Sealed SFP Receptacles

Order No.	Protocol	Components
106501-3000	Optical or Electrical	Receptacle with panel nut for the integrated solution
106501-0019	Optical	Simplified SFP receptacle with plastic dust cap
106501-0026	Optical	Simplified SFP receptacle with metal dust cap

1000Base -T Electrical Transceivers

Order No.	Components	Comment
74741-0001	Transceiver, RJ-45 to SFP	LOS GND
74741-0002	Transceiver, RJ-45 to SFP	LOS Toggle

Компания «Океан Электроники» предлагает заключение долгосрочных отношений при поставках импортных электронных компонентов на взаимовыгодных условиях!

Наши преимущества:

- Поставка оригинальных импортных электронных компонентов напрямую с производств Америки, Европы и Азии, а так же с крупнейших складов мира;
- Широкая линейка поставок активных и пассивных импортных электронных компонентов (более 30 млн. наименований);
- Поставка сложных, дефицитных, либо снятых с производства позиций;
- Оперативные сроки поставки под заказ (от 5 рабочих дней);
- Экспресс доставка в любую точку России;
- Помощь Конструкторского Отдела и консультации квалифицированных инженеров;
- Техническая поддержка проекта, помощь в подборе аналогов, поставка прототипов;
- Поставка электронных компонентов под контролем ВП;
- Система менеджмента качества сертифицирована по Международному стандарту ISO 9001;
- При необходимости вся продукция военного и аэрокосмического назначения проходит испытания и сертификацию в лаборатории (по согласованию с заказчиком);
- Поставка специализированных компонентов военного и аэрокосмического уровня качества (Xilinx, Altera, Analog Devices, Intersil, Interpoint, Microsemi, Actel, Aeroflex, Peregrine, VPT, Syfer, Eurofarad, Texas Instruments, MS Kennedy, Miteq, Cobham, E2V, MA-COM, Hittite, Mini-Circuits, General Dynamics и др.);

Компания «Океан Электроники» является официальным дистрибьютором и эксклюзивным представителем в России одного из крупнейших производителей разъемов военного и аэрокосмического назначения «JONHON», а так же официальным дистрибьютором и эксклюзивным представителем в России производителя высокотехнологичных и надежных решений для передачи СВЧ сигналов «FORSTAR».



JONHON

«JONHON» (основан в 1970 г.)

Разъемы специального, военного и аэрокосмического назначения:

(Применяются в военной, авиационной, аэрокосмической, морской, железнодорожной, горно- и нефтедобывающей отраслях промышленности)

«FORSTAR» (основан в 1998 г.)

ВЧ соединители, коаксиальные кабели,
кабельные сборки и микроволновые компоненты:

(Применяются в телекоммуникациях гражданского и специального назначения, в средствах связи, РЛС, а так же военной, авиационной и аэрокосмической отраслях промышленности).



Телефон: 8 (812) 309-75-97 (многоканальный)

Факс: 8 (812) 320-03-32

Электронная почта: ocean@oceanchips.ru

Web: <http://oceanchips.ru/>

Адрес: 198099, г. Санкт-Петербург, ул. Калинина, д. 2, корп. 4, лит. А