



# NetKey™ Cabling System

**PANDUIT™**

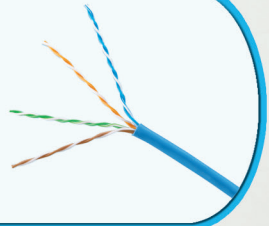
infrastructure for a connected world

## **NetKey™ Cabling System**

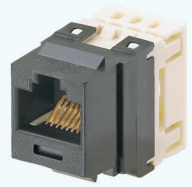
The NetKey™ Copper and Fibre Cabling System provides a complete, standards compliant cabling infrastructure solution for voice, data and video applications. NetKey™ Modules feature the universal “keystone” design and are compatible with a wide assortment of modular patch panels, faceplates and surface mount boxes. When teamed with complementary Panduit products, the NetKey™ solutions cover all your needs from the telecommunication room to the work area with the proven innovation and quality you depend on from Panduit.



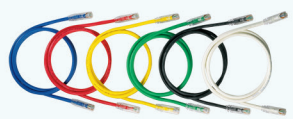
**NetKey™ Copper Cable**  
Page 4



**NetKey™ Modules**  
Pages 5, 7 and 15

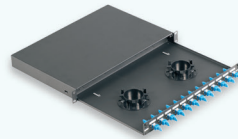


**NetKey™ Copper  
and Fibre  
Patch Cords**  
Pages 5, 8 and 9





**NetKey Fiber Patch Cords**  
Page 6



**NetKey Fiber Adapters and Enclosures**  
Page 7



**NetKey™ Patch Panels**  
Page 10



**NetKey™ Faceplates and Surface Mount Boxes**  
Pages 11 – 14



**Identification and Labelling Systems**  
Page 23



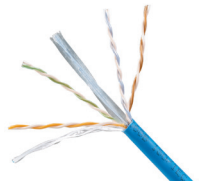
**NetKey A/V Modules**  
Page 13



**Racks and Cable Management**  
Page 22

## NetKey™ Copper Cable

- Meets ISO/IEC and ANSI/TIA-568-C.2 Category 6A/Class E(A), Category 6/Class E, and Category 5e/Class D performance requirements
- Reduced cable diameter for improved installation and termination
- Descending length cable markings enable easy identification of remaining cable
- Third party verified to ISO 11801 and ANSI/TIA-568-C.2
- 305m (1,000 ft.) in an easy-pay-out box



**NUC6C04BU-CE**



**NUC6CR04BU-CE**

Part Number	Description
<b>Category 6A U/UTP Copper Cable</b>	
<b>NUL6X04BU-CEG</b>	Category 6A, low smoke zero halogen (LSZH - IEC60332-1), 4-pair, 23 AWG, U/UTP, copper cable, Blue.
<b>Category 6 UTP Copper Cable – Reduced Diameter</b>	
<b>NUL6CR04BU-CE^</b>	Category 6, low smoke zero halogen (LSZH), 4-pair, UTP, blue copper cable.
<b>NUC6CR04BU-CE^</b>	Category 6, PVC (CM), 4-pair, UTP, blue copper cable.
<b>Category 6 UTP Copper Cable</b>	
<b>NUL6C04BU-CE^</b>	Category 6, low smoke zero halogen (LSZH), 4-pair, UTP, blue copper cable.
<b>NUC6C04BU-CE^</b>	Category 6, PVC (CM), 4-pair, UTP, blue copper cable.
<b>Category 5e UTP Copper Cable</b>	
<b>NUL5C04BU-CE^</b>	Category 5e, low smoke zero halogen (LSZH), 4-pair, UTP, blue copper cable.
<b>NUC5C04BU-CE^</b>	Category 5e, PVC (CM), 4-pair, UTP, blue copper cable.

^For standard colours replace colour suffix BU (Blue) with IG (International Grey) or WH (White). Please contact Customer Service for additional colours and flame ratings.

## NetKey™ Copper Category 6A, 6, 5e, and 3 Jack Modules

- Exceeds all industry performance standards for Category 6A, 6, 5e and 3
- Punchdown jack modules are 100% performance tested and individually serialized for future traceability
- Supports PoE, PoE+, and PoE++
- Snap in and out of keystone openings for easy moves, adds and changes
- Universal label includes T568A and T568B wiring schemes



NK6X88MIW  
NK6X88IW-Q



NK6TMIW



NK688MIW  
NK688MIW-Q



NKP5E88MIW  
NKP5E88MIW -Q



NK5E88MIWY  
NK5E88MIW-Q



NK388MIWY



NK366UMIWY



NK366MIWY

Part Number	Description	Colour
-------------	-------------	--------

### NetKey™ Category 6A UTP Jack Modules\*

NK6X88MIW	Category 6A, component compliant, 8-position, 8-wire, keystone punchdown jack module.	Off White.
NK6X88MIW-Q	Category 6A, component compliant, 8-position, 8-wire, keystone punchdown jack module. Convenience pack of 25.	Off White.

### NetKey™ Category 6 UTP Jack Modules\*

NK6TMIW	Category 6, 8-position, 8-wire, keystone TP termination style jack module.	Off White.
NK688MIW	Category 6, component-compliant, 8-position, 8-wire, keystone punchdown jack module.	Off White.
NK688MIW-Q	Category 6, component-compliant, 8-position, 8-wire, keystone punchdown jack module. Convenience pack of 25.	Off White.

### NetKey™ Category 5e UTP Jack Modules\*

NKP5E88MIW	Category 5e, component-compliant 8-position, 8-wire, keystone punchdown jack module.	Off White.
NKP5E88MIW-Q	Category 5e, component-compliant 8-position, 8-wire, keystone punchdown jack module. Convenience pack of 25.	Off White.
NK5E88MIWY	Category 5e, component-compliant 8-position, 8-wire, keystone leadframe jack module.	Off White.
NK5E88MIW-Q	Category 5e, component-compliant 8-position, 8-wire, keystone leadframe jack module. Convenience pack of 25.	Off White.

### NetKey™ Category 3 UTP Jack Modules\*\*

NK388MIWY	Category 3, 8-position, 8-wire, keystone leadframe jack module.	Off White.
NK366UMIWY	Category 3, 6-position, 6-wire, keystone leadframe jack module. Termination cap color-coded to USOC wiring scheme.	Off White.
NK366MIWY	Category 3, 6-position, 6-wire, keystone leadframe jack module.	Off White.

\* For standard colors, replace IW (Off White) with: EI (Electric Ivory), IG (International Gray), WH (White), BL (Black), BU (Blue), RD (Red), YL (Yellow), GR (Green), OR (Orange) or VL (Violet).

\*\* For standard colors, replace IW (Off White) with: EI (Electric Ivory), IG (International Gray), WH (White) or BL (Black).

## NetKey™ Copper UTP Patch Cords

- Meet all industry performance standards for Category 6A, 6 and 5e
- 100% performance tested
- Available in a variety of colours and lengths for design flexibility



NK6APC3BU  
NK6PC3MBUY



NK5EPC3MBUY

Part Number	Description
-------------	-------------

### Category 6A

NK6APC3BU	Category 6A, UTP patch cord with modular plugs on each end.
-----------	---

### Category 6

NK6PC3MBUY	Category 6, UTP patch cord with modular plugs on each end.
------------	--

### Category 5e

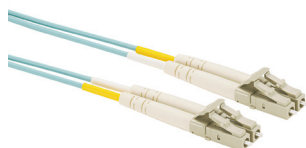
NK5EPC3MBUY	Category 5e, UTP patch cord with modular plugs on each end.
-------------	---

^Available in 0.5, 1, 2, 3, 4, 5 metre lengths.

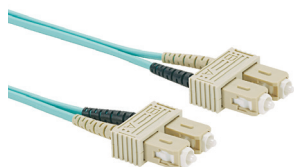
\*For standard colours other than Off White, add suffix BL (Black), BU (Blue), RD (Red), YL (Yellow), GR (Green), OR (Orange), VL (Violet) or GY (Grey) before Y in the part number. For example, the part number of a blue, Category 6, 5-metre patch cord is NK6PC5MBUY.

## NetKey™ Fibre Optic Patch Cords and Pigtails\*

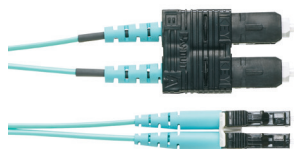
- Compliant with ANSI/TIA 568-C.3-1 and ISO/IEC 11801, TIA-604-5 (FOCIS-5)
- Patch cords and pigtails include OM3 fiber or OM1, OM2, or OS2 fiber in 900µm tight-buffered fiber, 1.6mm or 3.0mm duplex zipcord jacketed cable
- 100% performance tested assures that patch cords and pigtails are standard compliant
- Q.C. identification label quality control reference provides lifetime traceability of test data



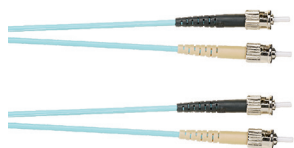
**LC to LC Patch Cord**



**SC to SC Patch Cord**



**SC to LC Patch Cord**



**ST to ST Patch Cord**

Part Number	Description
<b>LC to LC Patch Cords</b>	
NKFP62ELLLSM001	OM1 2 Fiber 1.6mm LSZH Jacket Patch Cord LC Duplex to LC Duplex - 1 meter
NKFP52ELLLSM001	OM2 2 Fiber 1.6mmLSZH Jacket Patch Cord LC Duplex to LC Duplex - 1 meter
NKFPX2ELLLSM001	OM3 2 Fiber 1.6mm LSZH Jacket Patch Cord LC Duplex to LC Duplex - 1 meter
NKFPZ22LLLSM001	OM4 2 Fiber 2.0mm LSZH Jacket Patch Cord LC Duplex to LC Duplex - 1 meter
NKFP92ELLLSM001	OS2 2 Fiber 1.6mm LSZH Jacket Patch Cord LC Duplex to LC Duplex - 1 meter
LC to LC OM1 and OM2 patch cords are available in lengths of 1-5, 10, 15, 20m. LC to LC OS2 and OM3 patch cords are available in lengths of 1-15, 20, 25, 30, 35, 40, 45, 50m.	

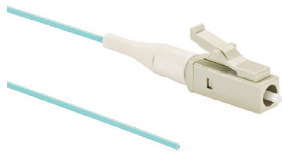
<b>SC to SC Patch Cords</b>	
NKFP623LSSSM001	OM1 2 Fiber 3.0mm LSZH Jacket Patch Cord SC Duplex to SC Duplex - 1 meter
NKFP523LSSSM001	OM2 2 Fiber 3.0mm LSZH Jacket Patch Cord SC Duplex to SC Duplex - 1 meter
NKFPX23LSSSM001	OM3 2 Fiber 3.0mm LSZH Jacket Patch Cord SC Duplex to SC Duplex - 1 meter
NKFP923LSSSM001	OS2 2 Fiber 3.0mm LSZH Jacket Patch Cord SC Duplex to SC Duplex - 1 meter
SC to SC patch cords are available in lengths of 1-5, 10, 15, and 20m.	

<b>SC to LC Patch Cords</b>	
NKFP62ELLSSM001	OM1 2 Fiber 1.6mm LSZH Jacket Patch Cord LC to SC - 1 meter
NKFP52ELLSSM001	OM2 2 Fiber 1.6mm LSZH Jacket Patch Cord LC to SC - 1 meter
NKFPX2ELLSSM001	OM3 2 Fiber 1.6mm LSZH Jacket Patch Cord LC to SC - 1 meter
SC to LC OM1 and OM2 patch cords are available in lengths of 1-5, 10, 15, 20m. SC to LC OS2 and OM3 patch cords are available lengths of 1-15, 20, 25, 30, 35, 40, 45, 50m	

<b>ST to ST Patch Cords</b>	
NKFP623L22SM001	OM1 2 Fiber 3.0mm LSZH Jacket Patch Cord ST to ST - 1 meter
NKFP523L22SM001	OM2 2 Fiber 3.0mm LSZH Jacket Patch Cord ST to ST - 1 meter
NKFPX23L22SM001	OM3 2 Fiber 3.0mm LSZH Jacket Patch Cord ST to ST - 1 meter
NKFP923L22SM001	OS2 2 Fiber 3.0mm LSZH Jacket Patch Cord ST to ST - 1 meter
ST to ST patch cords are available in lengths of 1-5, 10, 15, and 20m.	

\*For standard meter lengths other than 1 meter (2, 3, 5 or 10), change the length designation in the part number to the desired length. For example, the part number for a 2 meter, ST to ST, OM1, riser, duplex patch cord is NKFP623R22SM002

## NetKey™ Fibre Optic Patch Cords and Pigtails (continued)



LC to Pigtail



SC to pigtail

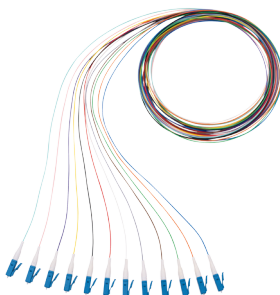


ST to Pigtail

Part Number	Description
<b>LC Pigtails</b>	
NKFP61BN1NNM001	OM1 1 Fiber 900um Buffered Pigtail LC - 1 Meter
NKFP51BN1NNM001	OM2 1 Fiber 900um Buffered Pigtail LC - 1 Meter
NKFPX1BN1NNM001*	OM3 1 Fiber 900um Buffered Pigtail LC - 1 Meter
NKFPZ1BN1NNM001*	OM4 1 Fiber 900um Buffered Pigtail LC - 1 Meter
NKFP91BN1NNM001*	OS2 1 Fiber 900um Buffered Pigtail LC - 1 Meter
<b>SC Pigtails</b>	
NKFP61BN3NNM001	OM1 1 Fiber 900um Buffered Pigtail SC - 1 Meter
NKFP51BN3NNM001	OM2 1 Fiber 900um Buffered Pigtail SC - 1 Meter
NKFPX1BN3NNM001*	OM3 1 Fiber 900um Buffered Pigtail SC - 1 Meter
NKFP91BN3NNM001*	OS2 1 Fiber 900um Buffered Pigtail SC - 1 Meter
<b>ST Pigtails</b>	
NKFP61BN2NNM001	OM1 1 Fiber 900um Buffered Pigtail ST - 1 Meter
NKFP51BN2NNM001	OM2 1 Fiber 900um Buffered Pigtail ST - 1 Meter
NKFPX1BN2NNM001	OM3 1 Fiber 900um Buffered Pigtail ST - 1 Meter
NKFP91BN2NNM001	OS2 1 Fiber 900um Buffered Pigtail ST - 1 Meter

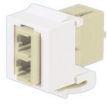
\* 2 meter pigtails available for these parts. For 2 meter configuration, replace last digit with "2". For example, NKFPX1BN3NNM002.

## NetKey Fiber Optic Pigtail Kits

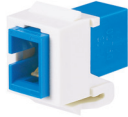


Part Number	Description
<b>LC to pigtail (OS2)</b>	
NKFP91BN1NKM001	NK 1-fiber OS2 LC to pigtail, 900µm tight buffered cable, 1m (12-color pigtail set)
<b>LC to pigtail (OM3)</b>	
NKFPX1BN1NKM001	NK 1-fiber OM3 LC to pigtail, 900µm tight buffered cable, 1m (12-color pigtail set)
<b>LC to pigtail (OM4)</b>	
NKFPZ1BN1NKM001	NK 1-fiber OM4 LC to pigtail, 900µm tight buffered cable, 1m (12-color pigtail set)

## NetKey™ Fibre Optic Adapters



NKDLCMIW



NKSCMZIW



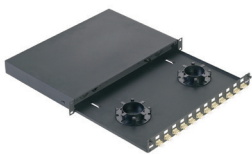
NKSTMIW

Part Number	Description	Colour
<b>LC Adapters</b>		
NKDLCMIW	Keystone module supplied with one LC Sr./Jr. SFF multimode duplex adapter with phosphor bronze split sleeves.	Off White
NKDLCMZIW	Keystone module supplied with one LC Sr./Jr. SFF singlemode duplex adapter with zirconia ceramic split sleeves.	Off White
<b>SC Adapters</b>		
NKSCMIW	Keystone module supplied with one SC multimode simplex adapter with phosphor bronze split sleeve.	Off White
NKSCMZIW	Keystone module supplied with one SC singlemode simplex adapter with zirconia ceramic split sleeve.	Off White
<b>ST Adapters</b>		
NKSTMIW	Keystone module supplied with one ST multimode simplex adapter with phosphor bronze split sleeve.	Off White

For standard colours other than IW (Off White), replace suffix with BL (Black), EI (Electric Ivory), IG (International Grey) WH (White) or AQ (Aqua).

## NetKey™ Fibre Enclosures

- Factory configured with 6, 12, or 24 duplex LC or SC adapters for fast and easy cabling and installation
- Slide-out drawer slides forward a full 300mm for service access to all fibre terminations, connections and/or splices
- Mounting hardware and fiber routing accessory kit included
- Supports fusion splicing with appropriate slack storage and cable management provisions
- Simple two-piece, all-metal body construction for easy and economical installation with no loose components to misplace; improved protection over plastic fibre drawers



NKFD1W12EIDLC

Part Number	Description
<b>SC Adapters*</b>	
NKFD1W6AQDSC	Pre-loaded fiber drawer with 6 SC aqua duplex adapters
NKFD1W6BLDSC	Pre-loaded fiber drawer with 6 SC black duplex adapters
NKFD1W6EIDSC	Pre-loaded fiber drawer with 6 SC electric ivory duplex adapters
NKFD1W6BUDSCZ	Pre-loaded fiber drawer with 6 SC blue duplex adapters with zirconia ceramic split sleeve
* For a 12 adapter enclosure, replace the 6 with 12.	
<b>LC Adapters**</b>	
NKFD1W12AQDLC	Pre-loaded fiber drawer with 12 LC aqua duplex adapters
NKFD1W12BLDLC	Pre-loaded fiber drawer with 12 LC black duplex adapters
NKFD1W12EIDLC	Pre-loaded fiber drawer with 12 LC electric ivory duplex adapters
NKFD1W12BUDLCZ	Pre-loaded fiber drawer with 12 LC blue duplex adapters with zirconia ceramic split sleeve

\*\* For a 24 adapter enclosure, replace the 12 with 24.



## NetKey® Patch Panels

- Mount to standard TIA/EIA 19" racks
- Punchdown patch panels meet all industry performance standards for Category 6A, 6 and 5e
- Modular patch panels accept all NetKey® Modules
- Molded patch panels made of strong polymer material, with port numbering front and back
- Optional angled versions available for high density installations
- Strain relief bars assist in cable management and bend radius control



NK6XPPG24Y  
NK6PPG24Y  
NK5EPPG24Y



NKA6XPPG24Y  
NKA6PPG24Y  
NKA5EPPG24Y



NK6PPG12WY  
NK5EPPG12WY

Part Number	Description
-------------	-------------

### Punchdown Patch Panels\* Category 6A

NK6XPPG24Y	Category 6A punchdown patch panel, 24 port, 1 RU.
NK6XPPG48Y	Category 6A punchdown patch panel, 48 port, 2 RU.
NKA6XPPG24Y	Category 6A angled punchdown patch panel, 24 port, 1 RU.
NKA6XPPG48Y	Category 6A angled punchdown patch panel, 48 port, 2 RU.
NK6XPP24P	Category 6A molded, flat, punchdown patch panel, 24 port, 1RU.
NK6XPP48P	Category 6A molded, flat, punchdown patch panel, 48 port, 2RU.
NK6XPPN24P	Category 6A molded, flat, punchdown patch panel, 24-port, 1 RU with no labels.
NK6XPPN48P	Category 6A molded, flat, punchdown patch panel, 48-port, 1 RU with no labels.

### Category 6

NK6PPG12WY	Category 6, 12-port punchdown patch panel. Mounts to wall with standard 89D bracket (WB89D).
NKA6PPG24Y	Category 6, 24-port, angled punchdown patch panel, 1 RU.
NKA6PPG48Y	Category 6, 48-port, angled punchdown patch panel, 2 RU.
NK6PPG24Y	Category 6, 24-port, punchdown patch panel, 1 RU.
NK6PPG48Y	Category 6, 48-port, punchdown patch panel, 2 RU.
NK6PP24P	Category 6, 24-port, molded punchdown patch panel, 1 RU.
NK6PP48P	Category 6, 48-port, molded punchdown patch panel, 2 RU.
NK6PPN24P	Category 6 molded, flat, punchdown patch panel, 24-port, 1 RU with no labels.
NK6PPN48P	Category 6 molded, flat, punchdown patch panel, 48-port, 1 RU with no labels.

### Category 5e

NK5EPPG12WY	Category 5e, 12-port punchdown patch panel. Mounts to wall with standard 89D bracket (WB89D).
NKA5EPPG24Y	Category 5e, 24-port, angled punchdown patch panel, 1 RU.
NKA5EPPG48Y	Category 5e, 48-port, angled punchdown patch panel, 2 RU.
NK5EPPG24Y	Category 5e, 24-port, punchdown patch panel, 1 RU.
NK5EPPG48Y	Category 5e, 48-port, punchdown patch panel, 2 RU.
NK5EPP24P	Category 5e, 24-port, molded punchdown patch panel, 1 RU.
NK5EPP48P	Category 5e, 48-port, molded punchdown patch panel, 2 RU.
NK5EPPN24P	Category 5e molded, flat, punchdown patch panel, 24-port, 1 RU with no labels.
NK5EPPN48P	Category 5e molded, flat, punchdown patch panel, 48-port, 1 RU with no labels.

\*Punchdown patch panels are color-coded for T568A and T568B wiring schemes. Punchdown tools found on page 13.

## NetKey® Patch Panels (continued)



NKPPA24FMY  
NKPPA48FMY



NKPP24FMY  
NKPP48FMY



SRBM19BLY



TLBP2S-V

### Modular Patch Panels

NKFP12W	12-port modular patch panel with front removable faceplate. Mounts to wall with standard 89D bracket (WB89D).
NKFP24Y	24-port modular patch panel with front removable faceplate, 1 RU.
NKMP24Y	24-port flush-mount modular patch panel, 1 RU.
NKFP48Y	48-port modular patch panel with front removable faceplate, 2 RU.
NKMP48Y	48-port flush-mount modular patch panel, 2 RU.
NKPPA24FMY	24-port flush mount angled modular patch panel, 1 RU.
NKPPA48FMY	48-port flush mount angled modular patch panel, 2 RU.
NKPP24FMY	24-port flush mount modular patch panel, 1 RU.
NKPP48FMY	48-port flush mount modular patch panel, 2 RU.
NKPP48HDY	48-port high-density flush-mount patch panel supplied with 6 eight-port rear-mounted faceplates, 1 RU.
NKPPA48HDY	48-port high-density angled flush-mount patch panel supplied with 6 eight-port rear-mounted faceplates, 1 RU.

### Wall Mount Bracket

WB89D	Wall mount bracket. Ideal for use with 12-port punchdown or modular patch panels.
-------	---

### Strain Relief Bars

SRB19BLY	Strain relief bar extends 2" from standard 19" rack for additional cable support.
SRBM19BLY	Strain relief bar with six Tak-Ty® Hook & Loop Cable Ties; supports, manages, and provides proper bend radius protection for up to 72 cables.

### Filler Panels

TLBP1S-V	1 RU tool-less filler panel, 9.52mm (3/8 in.) square holes.
TLBP1R-V	1 RU tool-less filler panel, M5 (#10) or M6 (#12) round tapped holes.
TLBP2S-V	2 RU tool-less filler panel, 9.52mm (3/8 in.) square holes.
TLBP2R-V	2 RU tool-less filler panel, M5 (#10) or M6 (#12) round tapped holes.
CPAF1BLY	1 RU angled filler panel.
CPAF2BLY	2 RU angled filler panel.

Information taken from updated North America line card, NKLC34

## NetKey™ Faceplates

- Accept all NetKey™ Modules
- Available in a variety of port densities
- Optional labels for easy port identification



NKFPLUKF2SAW



NKFPLUKF4SAW



NK2HSFIWY



NK4HSFIWY

Part Number	Description	Colour
<b>UK</b>		
NKFPLUKF2SAW	Single gang, 86mm x 86mm, shuttered faceplate with label and icon slots. Accepts two NetKey™ Modules. Includes two M3.5-0.5 x 30mm panhead mounting screws.	Arctic White
NKFPLUKF4SAW	Single gang, 86mm x 86mm, shuttered faceplate with label and icon slots. Accepts four NetKey™ Modules. Includes two M3.5-0.5 x 30mm panhead mounting screws.	Arctic White
<b>Italian</b>		
NK2HSFIWY	Single gang, horizontal, sloped faceplate with labels. Accepts two NetKey™ Modules.	Off White
NK4HSFIWY	Single gang, horizontal, sloped faceplate with labels. Accepts four NetKey™ Modules.	Off White

## NetKey™ Faceplate Kits



NKUKS2AW



NKUKS4AW-2G



NKUKS2SAW



NKUKS4SAW-2G

Part Number	Description	Colour
<b>UK</b>		
NKUKS2AW	Single gang, sloped faceplate kit with labels. Kit includes one 86 x 86mm faceplate frame and sloped insert. Accepts two NetKey™ Modules.	Arctic White
NKUKS4AW-2G	Double gang, sloped faceplate kit with labels. Kit includes one 146mm x 86mm faceplate frame and two sloped inserts. Accepts four NetKey™ Modules.	Arctic White
NKUKS2SAW	Single gang, sloped, shuttered faceplate kit with labels. Kit includes one 86mm x 86mm faceplate frame and one sloped, shuttered insert. Accepts two NetKey™ Modules.	Arctic White
NKUKS4SAW-2G	Double gang, sloped, shuttered faceplate kit with labels. Kit includes one 146mm x 86mm faceplate frame and two sloped, shuttered inserts. Accepts four NetKey™ Modules.	Arctic White

## NetKey™ Faceplate Kits (continued)



NKFS2AW



NKFS2SAW



NKAGS2AW



NKAGS2SAW



NKDS2AW



NKDS2SEW



NKFD66S2SEW



NKLKCLS2EW



NKLKCLS2SEW

Part Number	Description	Colour
<b>French, Spanish, Belgian and Portuguese</b>		
NKFS2AW	Single gang, sloped faceplate kit. Kit includes one 45mm x 45mm faceplate frame and one sloped insert. Accepts two NetKey™ Modules.	Arctic White
NKFS2SAW	Single gang, sloped, shuttered faceplate kit. Kit includes one 45mm x 45mm faceplate frame and one sloped, shuttered insert. Accepts two NetKey™ Modules.	Arctic White
<b>German, French, Spanish, Portuguese and Danish</b>		
NKAGS2AW	Single gang, sloped faceplate kit with labels. Kit includes one 50mm x 50mm faceplate frame and one sloped insert. Accepts two NetKey™ Modules.	Arctic White
NKAGS2SAW	Single gang sloped, shuttered faceplate kit with labels. Kit includes one 50mm x 50mm faceplate frame and one sloped, shuttered insert. Accepts two NetKey™ Modules.	Arctic White
<b>Danish</b>		
NKDS2EW	Single gang, sloped, faceplate kit with labels. Kit includes one 71.1mm x 50.4mm faceplate frame and one sloped insert. Accepts two NetKey™ Modules.	European White
NKDS2SEW	Single gang, sloped, shuttered faceplate kit with labels. Kit includes one 71.1mm x 50.4mm faceplate frame and one sloped insert. Accepts two NetKey™ Modules.	European White
NKFD66S2SEW	Single gang, sloped, shuttered faceplate kit. Compatible with LK Opus 66* frame. Kit includes one 58.8mm x 58.8mm faceplate frame and one sloped, shuttered insert. Ideal for in-wall and surface mount box installations. Accepts two NetKey™ Modules.	European White
NKLKCLS2EW	Single gang, sloped, faceplate kit with labels. Compatible with LK Clic'line* frame. Kit includes one 71.3mm x 45mm faceplate frame and one sloped insert. Accepts two NetKey™ Modules.	European White
NKLKCLS2SEW	Single gang, sloped, shuttered, faceplate kit with labels. Compatible with LK Clic'line* frame. Kit includes one 71.3mm x 45mm faceplate frame and one sloped, shuttered insert. Accepts two NetKey™ Modules.	European White

\*Opus 66 and Clic'line are trademarks of Lauritz Knudsen.

## NetKey™ Inserts, Frames and Adapters



NKHS2AW-X



NKHS2SAW-X



CBUGAWY



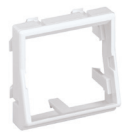
CBUGAW-2GY



CBAGAW



FCFAW



CBFAW



NKBTAL1WH-X



NKBTA1WH-X



NKFA1SAW-X



NK6CSSAW-X



NK6CSAW-X

Part Number	Description	Colour
-------------	-------------	--------

### Inserts

NKHS2AW-X	1/2 size, sloped modular insert. Accepts two NetKey™ Modules.	Arctic White
NKHS2SAW-X	1/2 size, sloped, shuttered modular insert. Accepts two NetKey™ Modules.	Arctic White

### Frames

CBUGAWY	86mm x 86mm, single gang faceplate frame with label. Accepts one 1/2 size module insert.	Arctic White
CBUGAW-2GY	86mm x 146mm, double gang faceplate frame with labels. Accepts two 1/2 size module inserts.	Arctic White
CBAGAW	50mm x 50mm, single gang faceplate frame with labels. Accepts one 1/2 size module insert.	Arctic White
FCFAW	80mm x 80mm, faceplate frame accepts all 50mm x 50mm adapters.	Arctic White

### Adapters

CBFAW	45mm x 45mm adapter, accepts one 1/2 size module insert.	Arctic White
NKBTAL1WH-X	Adapter with label pocket accepts one NetKey™ module, for Bticino Light series faceplates.	White
NKBTA1WH-X	Adapter accepts one NetKey™ module, for Bticino Living International series faceplates.	White
NKFA1SAW-X	22.5mm x 45mm 1-Position Shuttered Adapter with label accepts one NetKey™ module.	Off White
NK6CSSAW-X	Sloped, shuttered module snaps into standard UK LJU6C floor box mounting plates, faceplates and patch panels and accepts one NetKey™ Module.	Off White
NK6CSAW-X	Single gang, 25.4mm x 32mm, shuttered adapter. Compatible with LJU6C frame. Accepts one NetKey™ Module.	Arctic White

\*For standard colours other than White, replace WH in part number with BL (Black) or IW (Off White).

## NetKey™ Modular Furniture Faceplate



Part Number	Description	Colour
NK4MFIW	Snap-on modular furniture faceplate. Compatible with modular furniture panel cutout dimensions 34mm to 35.56mm – 67mm to 69mm. Accepts up to four NetKey™ Modules.	Off White
NK4MFABL	Snap-on 4-port sloped modular furniture faceplate. Compatible with modular furniture panel cutout dimensions 34mm to 35.56mm – 67mm to 69mm. Accepts up to four NetKey™ Modules.	Black

For standard colours other than Off White, replace IW in part number with AW (Arctic White), BL (Black), EI (Electric Ivory), WH (White) or IG (International Grey).

## NetKey™ Surface Mount Boxes

- Accept all NetKey™ Modules
- Include mounting screws and adhesive tape

- Compatible with Panduit™ LD3, LD5, and LD10 Raceway



NK2BXIW-A



NK4BXIW-AY



NK6BXIW-AY



CBM-X

Part Number	Description	Colour
NK2BXIW-A	Surface mount box accepts two NetKey™ Modules.	Off White
NK4BXIW-AY	Surface mount box accepts four NetKey™ Modules.	Off White
NK6BXIW-AY	Surface mount box accepts six NetKey™ Modules.	Off White
CBM-X	Optional magnet for mounting on metal surfaces. Compatible with NK2BXIW-A and NK4BXIW-AY.	—

For surface mount box standard colours other than IW (Off White), replace suffix with AW (Arctic White), EI (Electric Ivory), IG (International Grey) or WH (White).

## NetKey™ Audio/Video Modules and Inserts



NKFIW



NKBNCFIYW



NKRSMBIYW



NKRTMRIW



NKRPRIW



NKSPMIW



NKBPBIYW



NK35MSSIW



NK35MSCIW



NK35MSCIW

Part Number	Description	Colour
-------------	-------------	--------

### F-Type Module

NKFIW	Keystone module supplied with F-type 3 GHz coupler.	Off White
-------	---	-----------

### 50 Ohm BNC Coax Module

NKBNCFIYW	Keystone module supplied with 50 ohm industry standard coax bulkhead coupler.	Off White
-----------	---	-----------

### RCA Modules

NKRSMBIYW	Keystone module supplied with RCA solder type connector. Inserts available in multiple colours.	Off White
-----------	---	-----------

NKRTMRIW	Keystone module supplied with RCA pass-through connector. Inserts available in multiple colours.	Off White
----------	--	-----------

NKRPRIW	Keystone module supplied with RCA punchdown connector. Inserts available in multiple colours.	Off White
---------	---	-----------

### S-Video Modules

NKSPMIW	Keystone module supplied with SVHS punchdown connector.	Off White
---------	---	-----------

NKSVCIW	Keystone module supplied with S-Video pass-through connector.	Off White
---------	---	-----------

### 5-Way Binding Post Module

NKBPBIYW	Keystone module supplied with 5-way binding post.	Off White
----------	---	-----------

### 3.5mm Stereo Connector

NK35MSSIW	Keystone module supplied with 3.5mm (1/8") stereo solder type headset connector.	Off White
-----------	--	-----------

NK35MSCIW	Keystone module supplied with 3.5mm (1/8") stereo headset coupler.	Off White
-----------	--	-----------

<sup>^</sup>For RCA modules, replace second R (red), with B (black), Y (yellow), or W (white) for alternate insert colors.

<sup>^^</sup>For alternate color, replace second B (Black) with R (Red).

For standard colours other than IW (Off White), replace suffix with AW (Arctic White), EI (Electric Ivory), WH (White), IG (International Grey) or BL (Black). 5-Way Binding Post Module (NKBP<sup>^</sup>IYW) only available in EI (Electric Ivory) and WH (White).

## NetKey™ Audio/Video Modules and Inserts (continued)



NKHDMIW



NKUSBAAIW



NKBMIW-X



CHR3RGBIW



CHD9CIWY

Part Number	Description	Colour
<b>HDMI Coupler</b>		
NKHDMIW	Keystone module supplied with one HDMI 2.0 Type A female to female coupler module.	Off White
<b>USB Coupler</b>		
NKUSBAAIW	Keystone module supplied with one USB 2.0 female A to female A coupler module.	Off White
<b>Blank Module</b>		
NKBMIW-X	Blank keystone module reserves space for future use.	Off White
<b>RCA Inserts</b>		
CHR3RGBIW	1/3 insert supplied with three RCA pass-through couplers. Inserts are red, green and blue. Ideal for component video.	Off White
CHR3WYRIW	1/3 insert supplied with three RCA pass-through couplers. Inserts are white, yellow and red. Ideal for composite video or left/right stereo.	Off White
<b>D-Subminiature Inserts</b>		
CHD9CIWY	1/3 insert supplied with 9-pin female to female coupler.	Off White
CHD15HDCIWY	1/3 insert supplied with 15-pin female to female coupler.	Off White
CHD15HDSCIWY	1/3 insert supplied with 15-pin HD screw down DB connector mounted to printed circuit board. SVGA compatible.	Off White

<sup>^</sup>For RCA modules, replace second R (red), with B (black), Y (yellow), or W (white) for alternate insert colors.

<sup>^^</sup>For alternate color, replace second B (Black) with R (Red).

For standard colours other than IW (Off White), replace suffix with AW (Arctic White), EI (Electric Ivory), WH (White), IG (International Grey) or BL (Black). 5-Way Binding Post Module (NKBP<sup>^</sup>IWY) only available in EI (Electric Ivory) and WH (White).

## Termination Tools



PDT110



NKSPB



CJT



JR-PAN-2



CGJT

Part Number	Description
<b>Pan-Punch™ Termination Tool</b>	
PDT110	Single pair punchdown tool and blade terminates and cuts UTP cable in one operation. Ideal for use with Pan-Punch™ Punchdown System.
PDTH110	Replacement blade for single pair punchdown tool (PDT110).
<b>NetKey™ Jack Module Termination Tools</b>	
JR-PAN-2*	Fluke** JackRapid Termination Tool for Category 6 and Category 5e NetKey™ Punchdown Modules.
CJT-X	Termination tool for Category 3 NetKey™ Leadframe Jack Modules.
CGJT	Terminates Giga-TXTM TP style jack modules.
<b>Punchdown Base</b>	
NKSPB	Base used to assist in terminating punchdown modules.

\*Fluke JackRapid Termination Tool available through distribution.

Visit [www.fluke.com](http://www.fluke.com) to locate a local distributor.

\*\*Fluke is a registered trademark of Fluke Corporation.

## Identification and Labeling Systems

- Variety of labelling systems and labels enable quick and easy network identification



LS8EQ-KIT



LS8EQ



LS8E



LS8E-KIT



TDP43ME



S100X150VAC  
and  
S100X150VA1Y

Part Number	Description
-------------	-------------

### PanTher™ LS8EQ and Cougar™ LS9Q Hand-Held Thermal Transfer Printers

LS8EQ-KIT-ACE	Includes LS8EQ hand-held printer with QWERTY keypad, PANTHERLINK Software, one cassette of S100X150VAC self-laminating labels, six AA alkaline batteries, LS8-CASE, LS8-PCKIT, LS8-IB, LS8-WS, quick reference card, and operator's manual and AC power adapter for Europe.
LS8EQ-KIT	Includes LS8EQ hand-held printer with QWERTY keypad, PANTHERLINK Software, one cassette of S100X150VAC self-laminating labels, six AA alkaline batteries, LS8-CASE, LS8-PCKIT, LS8-IB, LS8-WS, quick reference card, and operator's manual.
LS8EQ	Includes hand-held printer with QWERTY keypad, PANTHERLINK™ Software, one cassette of S100X150VAC self-laminating labels, six AA alkaline batteries, and quick reference card.

### PanTher™ LS8E Hand-Held Thermal Transfer Printer and Accessories

LS8E	LS8E printer, one cassette of self-laminating labels, six AA alkaline batteries and quick reference card.
LS8E-KIT	LS8E printer, one cassette of self-laminating labels, six AA alkaline batteries, rigid carrying case, LS8-PCKIT, LS8-IB, operator's manual and quick reference card.
S100X150VAC	Self-laminating, white vinyl label for use with LS8E printer.

### Thermal Transfer Desktop Printer and Accessories

TDP43ME/E	300 dpi printer; includes printer, Panduit® Easy-Mark Labeling Software, RMEH4BL hybrid black ribbon, USB cable, user manual, quick start card, driver disk, and the following power cords: EuroPlug, Swiss, UK, and Japan JIS 8303 3-pin; for use outside N.A.
S100X150VA1Y	Self-laminating, white vinyl label for use with thermal transfer desktop printer.

For complete identification offering, reference the Panduit Physical Infrastructure Systems Catalogue (SA-NCCB51) or visit [www.panduit.com](http://www.panduit.com).



## Racks and Cable Management

- Cable management products and accessories maintain bend radius control and cable performance while bundling and securing cable to prevent snags and stress from over bending

Part Number	Description
ER4P23	4 post EIA rack with #12-24 threaded rails. Dimensions: 2134mm X 515mm X 584mm (84.0"H X 20.3"W X 23.0"D)
WMPV45E	NetRunner™ Front and Rear Vertical Cable Manager with dual hinged cover, wire retainers and side mount brackets. 45 RU.
WMPSE	PatchLink™ Front and Rear Horizontal Cable Manager with dual hinged cover. 1 RU.
WMP1E	PatchLink™ Front and Rear Horizontal Cable Manager with dual hinged cover. 2 RU.
CMPH1	OpenAccess™ Front and Rear Horizontal Cable Manager with optional snap on cover. 1 RU.
CMPH2	OpenAccess™ Front and Rear Horizontal Cable Manager with optional snap on cover. 2 RU.
CMPHF1	OpenAccess™ Front Only Horizontal Cable Manager with optional snap on cover. 1 RU.
SRM19FM1	Rack mount shelve, 13.6 kg capacity, 1 RU.
SRM19FM2	Rack mount shelve, 22.6 kg capacity, 2 RU.
RGS134-1Y	Rack grounding strip (1.9m length, 17mm width, 1.27mm thickness). Provided with 5cc of antioxidant, one grounding sticker, and three each M6 x 12mm and #12-24 x 1/2" thread-forming screws.
RGS134-10-1Y	10 rack grounding strips (1.9m length, 17mm width, 1.27mm thickness). Provided with 5cc of antioxidant, one grounding sticker, and 30 each M6 x 12mm and #12-24 x 1/2" thread-forming screws.
RGCBNJ660P22	Common bonding network to rack jumper kit. Provided with HTAP that bonds to MCBN sizes ranging from 16mm <sup>2</sup> - 25mm <sup>2</sup> .

For complete cable management and bonding/grounding offering, reference the Panduit Physical Infrastructure Systems Catalogue (SA-NCCB51) or visit [www.panduit.com](http://www.panduit.com).



**PANDUIT™**

Panduit Corp.  
World Headquarters  
Tinley Park, IL 60487

800.777.3300

[www.panduit.com](http://www.panduit.com)

Компания «Океан Электроники» предлагает заключение долгосрочных отношений при поставках импортных электронных компонентов на взаимовыгодных условиях!

Наши преимущества:

- Поставка оригинальных импортных электронных компонентов напрямую с производств Америки, Европы и Азии, а так же с крупнейших складов мира;
- Широкая линейка поставок активных и пассивных импортных электронных компонентов (более 30 млн. наименований);
- Поставка сложных, дефицитных, либо снятых с производства позиций;
- Оперативные сроки поставки под заказ (от 5 рабочих дней);
- Экспресс доставка в любую точку России;
- Помощь Конструкторского Отдела и консультации квалифицированных инженеров;
- Техническая поддержка проекта, помощь в подборе аналогов, поставка прототипов;
- Поставка электронных компонентов под контролем ВП;
- Система менеджмента качества сертифицирована по Международному стандарту ISO 9001;
- При необходимости вся продукция военного и аэрокосмического назначения проходит испытания и сертификацию в лаборатории (по согласованию с заказчиком);
- Поставка специализированных компонентов военного и аэрокосмического уровня качества (Xilinx, Altera, Analog Devices, Intersil, Interpoint, Microsemi, Actel, Aeroflex, Peregrine, VPT, Syfer, Eurofarad, Texas Instruments, MS Kennedy, Miteq, Cobham, E2V, MA-COM, Hittite, Mini-Circuits, General Dynamics и др.);

Компания «Океан Электроники» является официальным дистрибьютором и эксклюзивным представителем в России одного из крупнейших производителей разъемов военного и аэрокосмического назначения «JONHON», а так же официальным дистрибьютором и эксклюзивным представителем в России производителя высокотехнологичных и надежных решений для передачи СВЧ сигналов «FORSTAR».



## JONHON

«JONHON» (основан в 1970 г.)

Разъемы специального, военного и аэрокосмического назначения:

(Применяются в военной, авиационной, аэрокосмической, морской, железнодорожной, горно- и нефтедобывающей отраслях промышленности)

«FORSTAR» (основан в 1998 г.)

ВЧ соединители, коаксиальные кабели, кабельные сборки и микроволновые компоненты:

(Применяются в телекоммуникациях гражданского и специального назначения, в средствах связи, РЛС, а так же военной, авиационной и аэрокосмической отраслях промышленности).



Телефон: 8 (812) 309-75-97 (многоканальный)

Факс: 8 (812) 320-03-32

Электронная почта: [ocean@oceanchips.ru](mailto:ocean@oceanchips.ru)

Web: <http://oceanchips.ru/>

Адрес: 198099, г. Санкт-Петербург, ул. Калинина, д. 2, корп. 4, лит. А