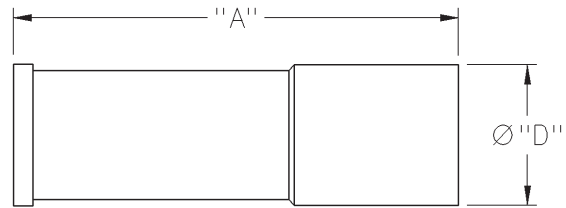
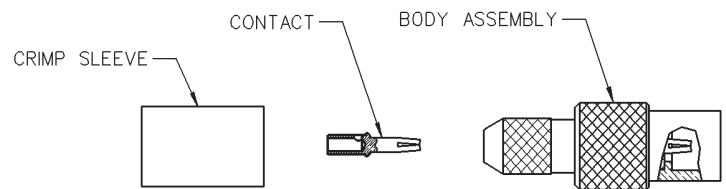
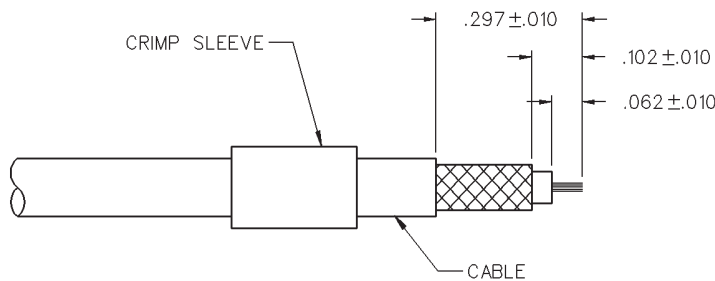


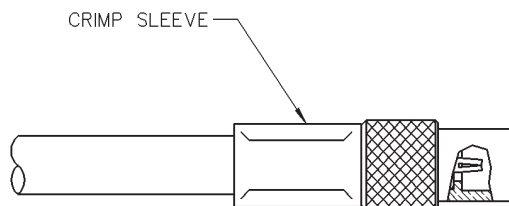
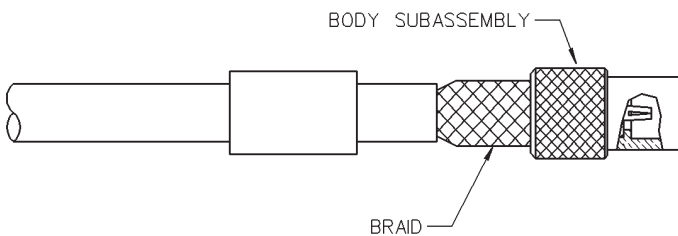
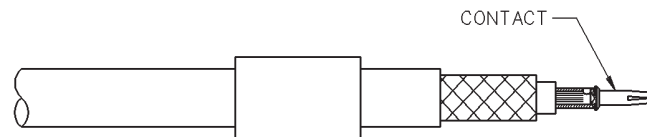
MMCX Straight Crimp Type Jack - Solder or Crimp Captivated Contact



CABLE TYPE	PART NUMBER	"A"	"D"	TERMINATION
RG-179/U, 187	135-3333-001	.545 (13.84)	.173 (4.39)	Crimp Sleeve



CABLE GROUP	PART NUMBER	CRIMP HEX
RG-179/u, 187	135-3333-001	.128 (3.25)



1. Identify connector parts. (3 piece parts)
2. Strip cable jacket to dimensions shown. Do not nick braid or center conductor during strip operations. Tin center conductor if contact will be solder attached. Do not tin center conductor if contact is to be crimp attached. Slide crimp sleeve onto cable jacket.
3. Assemble contact onto cable.
Solder attachment: Solder contact to center conductor. Care should be taken that excess solder is not applied.
Crimp attachment: Crimp contact to center conductor using Johnson Components™ hand tool 140-0000-952 and die set 140-0000-953. Crimp location should be centered between end of contact and cross-hole. Crimp attachment to solid center conductor cables is not recommended.
4. Slide body assembly over contact and under braid, then seat firmly onto contact. The body assembly will "snap" over the contact barb. The cable may have to be held in a soft jawed clamping fixture. Slide crimp sleeve forward and crimp using recommended crimp die hex.

MMCX - 50 Ohm Connectors



Specifications

ELECTRICAL RATINGS

Impedance: 50 ohms

Frequency Range: Connectors 0-6 GHz
 Dummy loads 0-1 GHz

VSWR: (f = GHz)

	Straight Cabled Connectors	Right Angle Cabled Connectors
.047 dia flexible	1.20	1.14 + .07f
RG-178, RG-316, RG-316DS	1.20	1.25
.086 semi-rigid	1.15	1.15

Uncabled receptacles, dummy loads N/A

Working Voltage: Connectors 170 Vrms at sea level†
 Dummy loads N/A

Dielectric Withstanding Voltage: Connectors...500 Vrms at sea level†
 Dummy loads N/A

Insulation Resistance: 1000 megohms min

Contact Resistance: (milliohms maximum)

	Initial	After Environmental
Center contact (straight cabled connectors and uncabled receptacles)	5.0	8.0
Center contact (right angle cabled connectors)	5.0	15.0
Outer contact (all connectors)	1.0	1.5
Braid to body	1.5	N/A

Corona Level: Connectors 190 volts min at 70,000 feet†
 Dummy loads N/A

Insertion Loss: (dB max tested at 1 GHz)

Straight cabled connectors	0.1
Right angle cabled connectors	0.2
Uncabled receptacles, dummy loads	N/A

RF Leakage: (dB minimum, tested at 2.5 GHz)

Flexible cable connectors	-60 dB
.086 semi-rigid	-70 dB
Dummy loads	N/A

RF High Potential Withstanding Voltage: (400 Vrms at 4 and 7 MHz)†

Power Rating (Dummy Load): - 0.5 watt @ +25°C, derated to 0.25 watt @ +125°C

†Avoid user injury due to misapplication.
 See safety advisory definitions inside front cover.

See safety advisory definitions inside front cover.

See safety advisory definitions inside front cover.

See safety advisory definitions inside front cover.

See safety advisory definitions inside front cover.

See safety advisory definitions inside front cover.

See safety advisory definitions inside front cover.

See safety advisory definitions inside front cover.

See safety advisory definitions inside front cover.

See safety advisory definitions inside front cover.

See safety advisory definitions inside front cover.

See safety advisory definitions inside front cover.

See safety advisory definitions inside front cover.

See safety advisory definitions inside front cover.

See safety advisory definitions inside front cover.

See safety advisory definitions inside front cover.

See safety advisory definitions inside front cover.

See safety advisory definitions inside front cover.

See safety advisory definitions inside front cover.

MECHANICAL RATINGS

Engagement Design: Series MMCX

Engagement/Disengagement Force: 8 lbs. max axial engagement
 1.4 lbs. min axial disengagement

Contact Retention: 2.0 lbs. minimum axial force

Cable Retention:

	Axial Force* (pounds)	Torque (in-oz)
Connectors for .047 flexible	3.5	N/A
Connectors for RG-178	7.0	N/A
Connectors for RG-316	20.0	N/A
Connectors for RG-316DS	25.0	N/A
Connectors for .086 semi-rigid	30.0	16

*Or cable breaking strength whichever is less.

Durability: 500 cycles minimum

Durability: 500 cycles minimum

Durability: 500 cycles minimum

Durability: 500 cycles minimum

Durability: 500 cycles minimum

Durability: 500 cycles minimum

Durability: 500 cycles minimum

Durability: 500 cycles minimum

Durability: 500 cycles minimum

Durability: 500 cycles minimum

Durability: 500 cycles minimum

Durability: 500 cycles minimum

Durability: 500 cycles minimum

Durability: 500 cycles minimum

Durability: 500 cycles minimum

Durability: 500 cycles minimum

Durability: 500 cycles minimum

Durability: 500 cycles minimum

Durability: 500 cycles minimum

Durability: 500 cycles minimum

Durability: 500 cycles minimum

Durability: 500 cycles minimum

Durability: 500 cycles minimum

Durability: 500 cycles minimum

Durability: 500 cycles minimum

Durability: 500 cycles minimum

Durability: 500 cycles minimum

Durability: 500 cycles minimum

Durability: 500 cycles minimum

Durability: 500 cycles minimum

Durability: 500 cycles minimum

Durability: 500 cycles minimum

Durability: 500 cycles minimum

Durability: 500 cycles minimum

Durability: 500 cycles minimum

Durability: 500 cycles minimum

Durability: 500 cycles minimum

Durability: 500 cycles minimum

Durability: 500 cycles minimum

Durability: 500 cycles minimum

Durability: 500 cycles minimum

Durability: 500 cycles minimum

Durability: 500 cycles minimum

Durability: 500 cycles minimum

Durability: 500 cycles minimum

Durability: 500 cycles minimum

Durability: 500 cycles minimum

Durability: 500 cycles minimum

Durability: 500 cycles minimum

Durability: 500 cycles minimum

Durability: 500 cycles minimum

Durability: 500 cycles minimum

Durability: 500 cycles minimum

Durability: 500 cycles minimum

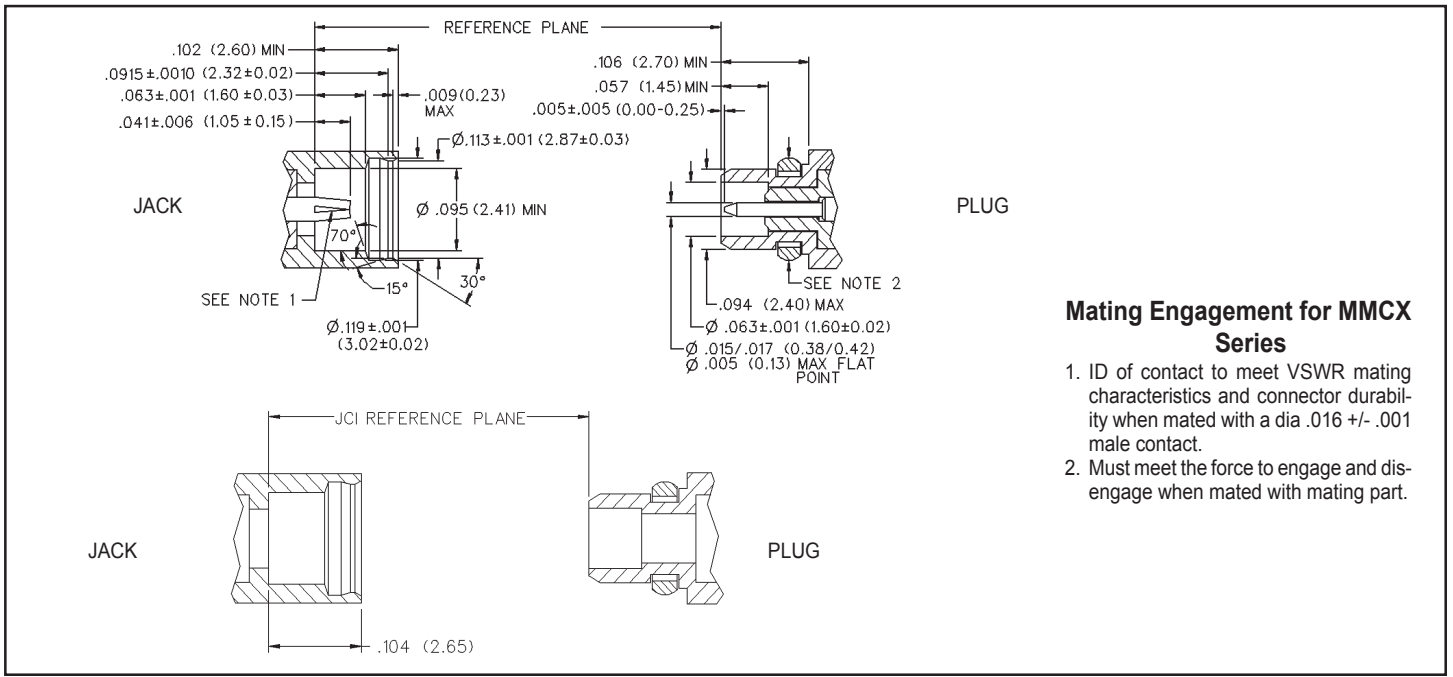
Durability: 500 cycles minimum

Durability: 500 cycles minimum

Durability: 500 cycles minimum

Durability: 500 cycles minimum

Durability: 500 cycles minimum



Mating Engagement for MMCX Series

1. ID of contact to meet VSWR mating characteristics and connector durability when mated with a dia .016 +/- .001 male contact.
2. Must meet the force to engage and disengage when mated with mating part.

*All gold plated parts include a .00005" min nickel barrier layer.

Компания «Океан Электроники» предлагает заключение долгосрочных отношений при поставках импортных электронных компонентов на взаимовыгодных условиях!

Наши преимущества:

- Поставка оригинальных импортных электронных компонентов напрямую с производств Америки, Европы и Азии, а так же с крупнейших складов мира;
- Широкая линейка поставок активных и пассивных импортных электронных компонентов (более 30 млн. наименований);
- Поставка сложных, дефицитных, либо снятых с производства позиций;
- Оперативные сроки поставки под заказ (от 5 рабочих дней);
- Экспресс доставка в любую точку России;
- Помощь Конструкторского Отдела и консультации квалифицированных инженеров;
- Техническая поддержка проекта, помощь в подборе аналогов, поставка прототипов;
- Поставка электронных компонентов под контролем ВП;
- Система менеджмента качества сертифицирована по Международному стандарту ISO 9001;
- При необходимости вся продукция военного и аэрокосмического назначения проходит испытания и сертификацию в лаборатории (по согласованию с заказчиком);
- Поставка специализированных компонентов военного и аэрокосмического уровня качества (Xilinx, Altera, Analog Devices, Intersil, Interpoint, Microsemi, Actel, Aeroflex, Peregrine, VPT, Syfer, Eurofarad, Texas Instruments, MS Kennedy, Miteq, Cobham, E2V, MA-COM, Hittite, Mini-Circuits, General Dynamics и др.);

Компания «Океан Электроники» является официальным дистрибьютором и эксклюзивным представителем в России одного из крупнейших производителей разъемов военного и аэрокосмического назначения «JONHON», а так же официальным дистрибьютором и эксклюзивным представителем в России производителя высокотехнологичных и надежных решений для передачи СВЧ сигналов «FORSTAR».



JONHON

«JONHON» (основан в 1970 г.)

Разъемы специального, военного и аэрокосмического назначения:

(Применяются в военной, авиационной, аэрокосмической, морской, железнодорожной, горно- и нефтедобывающей отраслях промышленности)

«FORSTAR» (основан в 1998 г.)

ВЧ соединители, коаксиальные кабели, кабельные сборки и микроволновые компоненты:

(Применяются в телекоммуникациях гражданского и специального назначения, в средствах связи, РЛС, а так же военной, авиационной и аэрокосмической отраслях промышленности).



Телефон: 8 (812) 309-75-97 (многоканальный)

Факс: 8 (812) 320-03-32

Электронная почта: ocean@oceanchips.ru

Web: <http://oceanchips.ru/>

Адрес: 198099, г. Санкт-Петербург, ул. Калинина, д. 2, корп. 4, лит. А