

## POWER CONNECTORS AND CABLE ASSEMBLIES FOR OPEN COMPUTE PROJECT (OCP)

Our power connectors and cable assemblies for Open Compute Project (OCP) are designed to meet OCP power distribution architecture standards. These products provide a simple yet customizable design that enables a standardized platform capable of efficiently distributing up to 500A of power per UL and CSA criteria, while offering improved electrical performance.

- Simple plug-and-play solutions
- Support 12V up to 48V
- Offers low resistance and low milli-volt drop
- Support low energy consumption and operational cost savings
- Fully compatible with specifications for use in rack-level bus bar applications
  - Power shelves
  - Battery backup unit (BBU) shelves
  - IT trays/cubby shelves
  - Server sleds

# Power Connectors and Cable Assemblies

For Open Compute Project (OCP)

## 12V or 48V Bus Bar Connectors & Cable Assemblies

### Features and Benefits:

- Robust, metal connector is designed to help withstand rack installation
- Better heat dissipation provides lower power consumption, saving over power consumption costs in the application
- Connectors feature lower profiles and better contact resistance to enable lower overall power consumption in the data center
- The same connector can be used for either 12V or 48V power and for power or return (one for each)
- Custom cable assemblies available

### Ordering Information:

| TE Part Number | Description  | Application   | Current    | Voltage    |
|----------------|--|---|------------|------------|
| 2204080-1      | Bus Bar Power Connector                                      | IT Tray and Cubby Shelf   | up to 150A | 12V or 48V |
| 2204273-1      | Bus Bar Power Connector                                      | Power Shelf and BBU   | up to 500A | 12V or 48V |
| 2323858-1      | Shelf Level Bus Bar Cable Assembly                           | Power to Server Sleds   | up to 25A  | 12V or 48V |
| 2323857-1      | Shelf Level Bus Bar Cable Assembly                           | Power to Server Sleds   | up to 50A  | 12V or 48V |
| 2159562-1      | MULTI-BEAM XLE Panel Mount to Press-Fit Power Cable Assembly | Power Delivery to Cubby Sled, Subsystems for Storage, Compute, etc. | up to 40A  | 12V or 48V |
| 2159443-1      | MULTI-BEAM XLE Panel Mount to Squeeze Release                | Power Delivery to Cubby Sled Direct or via Interposer Board         | up to 50A  | 12V or 48V |



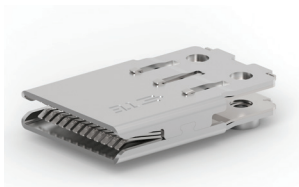
150A Bus Bar Connector



25A Cable Assembly



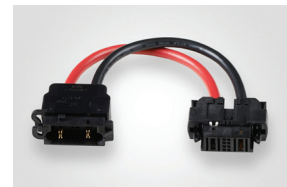
MULTI-BEAM XLE Panel Mount to Press-Fit



500A Bus Bar Connector



50A Cable Assembly



MULTI-BEAM XLE Panel Mount to Squeeze Release

## 12V Bus Bar Connectors & Cable Assemblies

### Features and Benefits:

- Reduces the number of bus bars in a rack from three to one, saving costs and streamlining power distribution architecture
- Distributes up to 120A of power per UL and CSA criteria from a single bus bar to an Open Rack V2 Sled design
- Reliable contact crimp connection helps eliminate power loss with a maximum contact resistance of 0.2 milliohms and is designed for hot-pluggable applications, which minimizes unwanted system downtime
- Anti over-stress feature helps to ensure the contact is protected to avoid any kind of damage caused by over-deflection during mating or un-mating
- Custom cable assemblies available

### Ordering Information:

| TE Part Number | Description                            | Application  | Current    | Voltage |
|----------------|--|--|------------|---------|
| 2314316-1      | V2 Bus Bar Clip and 1x3 Cable Assembly | Three-bay Shelf for V2 Open Rack Storage i.e. Cubby/ Horizontal Sled orientation | up to 150A | 12V     |
| 2321561-1      | V2 Bus Bar Clip and 1x2 Cable Assembly | Four-bay Shelf for V2 Open Rack Storage i.e. vCubby/ Vertical Sled orientation   | up to 100A | 12V     |



Bus Bar Clip and Cable Assembly

# Power Connectors and Cable Assemblies

For Open Compute Project (OCP)

## Other TE Power Solutions for OCP

### Ordering Information:

| TE Part Number | Description                        | Application                        | Current   | Voltage    |
|----------------|------------------------------------|------------------------------------|-----------|------------|
| 2323858-1      | Shelf Level Bus Bar Cable Assembly | Power to Server Sleds              | up to 25A | 12V or 48V |
| 2323857-1      | Shelf Level Bus Bar Cable Assembly | Power to Server Sleds              | up to 50A | 12V or 48V |
| Custom Designs | ELCON Mini Cable Assembly          | Internal Server Power Distribution | up to 40A | 500V AC/DC |

## Associated Products

| Product                                      | Wire Size    | Current   | Specialty                                 |
|--|--------------|-----------|---|
| MULTI-BEAM XLE Cable Receptacles             | 26-8 AWG     | up to 50A | Low, high power options in same connector |
| ELCON Mini Connectors                        | 14-10 AWG    | up to 35A | Low profile                               |
| RAPID LOCK Bus Bar Connectors                | 12-0 AWG     | 50-250A   | Bus bar quick connect/disconnect          |
| High Current Universal MATE-N-LOK Connectors | 30-10 AWG    | up to 35A | Panel mount or free hanging versions      |
| AMP Power Series Connectors                  | 300MCM-0 AWG | 15-275A   | Single & 2 pole quick connect/disconnect  |
| Wave Crimp Connectors                        | Flat Cable   | 40-110A   | Flat                                      |



MULTI-BEAM XLE Cable Receptacles



ELCON Mini Connectors



RAPID LOCK Bus Bar Connectors

# Power Connectors and Cable Assemblies

For Open Compute Project (OCP)

## FOR MORE INFORMATION

### TE Technical Support Center

|                   |                    |
|-------------------|--------------------|
| USA:              | 1.800.522.6752     |
| Canada:           | 1.905.475.6222     |
| Mexico:           | 52.0.55.1106.0800  |
| Latin/S. America: | 54.0.11.4733.2200  |
| Germany:          | 49.0.6251.133.1999 |
| UK:               | 44.0.800.267666    |
| France:           | 33.0.1.3420.8686   |
| Netherlands:      | 31.0.73.6246.999   |
| China:            | 86.0.400.820.6015  |

### te.com

ELCON Mini, CROWN BAND, CROWN CLIP, AMP, RAPID LOCK, MATE-N-LOCK, MULTI-BEAM XL, MULTI-BEAM XLE, TE Connectivity, TE connectivity (logo) and Every Connection Counts are trademarks.

All other logos, products and/or company names referred to herein might be trademarks of their respective owners.

The information given herein, including drawings, illustrations and schematics which are intended for illustration purposes only, is believed to be reliable. However, TE Connectivity makes no warranties as to its accuracy or completeness and disclaims any liability in connection with its use. TE Connectivity's obligations shall only be as set forth in TE Connectivity's Standard Terms and Conditions of Sale for this product and in no case will TE Connectivity be liable for any incidental, indirect or consequential damages arising out of the sale, resale, use or misuse of the product. Users of TE Connectivity products should make their own evaluation to determine the suitability of each such product for the specific application.

© 2017 TE Connectivity Ltd. family of companies All Rights Reserved.

1-1773867-8 09/17 DND

Компания «Океан Электроники» предлагает заключение долгосрочных отношений при поставках импортных электронных компонентов на взаимовыгодных условиях!

Наши преимущества:

- Поставка оригинальных импортных электронных компонентов напрямую с производств Америки, Европы и Азии, а так же с крупнейших складов мира;
- Широкая линейка поставок активных и пассивных импортных электронных компонентов (более 30 млн. наименований);
- Поставка сложных, дефицитных, либо снятых с производства позиций;
- Оперативные сроки поставки под заказ (от 5 рабочих дней);
- Экспресс доставка в любую точку России;
- Помощь Конструкторского Отдела и консультации квалифицированных инженеров;
- Техническая поддержка проекта, помощь в подборе аналогов, поставка прототипов;
- Поставка электронных компонентов под контролем ВП;
- Система менеджмента качества сертифицирована по Международному стандарту ISO 9001;
- При необходимости вся продукция военного и аэрокосмического назначения проходит испытания и сертификацию в лаборатории (по согласованию с заказчиком);
- Поставка специализированных компонентов военного и аэрокосмического уровня качества (Xilinx, Altera, Analog Devices, Intersil, Interpoint, Microsemi, Actel, Aeroflex, Peregrine, VPT, Syfer, Eurofarad, Texas Instruments, MS Kennedy, Miteq, Cobham, E2V, MA-COM, Hittite, Mini-Circuits, General Dynamics и др.);

Компания «Океан Электроники» является официальным дистрибьютором и эксклюзивным представителем в России одного из крупнейших производителей разъемов военного и аэрокосмического назначения «JONHON», а так же официальным дистрибьютором и эксклюзивным представителем в России производителя высокотехнологичных и надежных решений для передачи СВЧ сигналов «FORSTAR».



## JONHON

«JONHON» (основан в 1970 г.)

Разъемы специального, военного и аэрокосмического назначения:

(Применяются в военной, авиационной, аэрокосмической, морской, железнодорожной, горно- и нефтедобывающей отраслях промышленности)

«FORSTAR» (основан в 1998 г.)

ВЧ соединители, коаксиальные кабели,  
кабельные сборки и микроволновые компоненты:

(Применяются в телекоммуникациях гражданского и специального назначения, в средствах связи, РЛС, а так же военной, авиационной и аэрокосмической отраслях промышленности).



Телефон: 8 (812) 309-75-97 (многоканальный)

Факс: 8 (812) 320-03-32

Электронная почта: [ocean@oceanchips.ru](mailto:ocean@oceanchips.ru)

Web: <http://oceanchips.ru/>

Адрес: 198099, г. Санкт-Петербург, ул. Калинина, д. 2, корп. 4, лит. А