

# Application Note

AN- EVAL-2QR0680Z-40W

40W20V Evaluation Board with Quasi-Resonant CoolSET<sup>®</sup> ICE2QR0680Z

Power Management & Supply



**Published by**  
**Infineon Technologies AG**  
**81726 Munich, Germany**  
**© 2016 Infineon Technologies AG**  
**All Rights Reserved.**

**Legal Disclaimer**

The information given in this document shall in no event be regarded as a guarantee of conditions or characteristics. With respect to any examples or hints given herein, any typical values stated herein and/or any information regarding the application of the device, Infineon Technologies hereby disclaims any and all warranties and liabilities of any kind, including without limitation, warranties of non-infringement of intellectual property rights of any third party.

**Information**

For further information on technology, delivery terms and conditions and prices, please contact the nearest Infineon Technologies Office ([www.infineon.com](http://www.infineon.com)).

**Warnings**

Due to technical requirements, components may contain dangerous substances. For information on the types in question, please contact the nearest Infineon Technologies Office.

Infineon Technologies components may be used in life-support devices or systems only with the express written approval of Infineon Technologies, if a failure of such components can reasonably be expected to cause the failure of that life-support device or system or to affect the safety or effectiveness of that device or system. Life support devices or systems are intended to be implanted in the human body or to support and/or maintain and sustain and/or protect human life. If they fail, it is reasonable to assume that the health of the user or other persons may be endangered.

**AN- EVAL-2QR0680Z-40W**

**Revision History:** 7 September 2016 **V1.1**

Previous Version: V1.0


| Page                   | Subjects (major changes since last revision) |
|------------------------|--|
| 6, 7, 8, 9, 11, 12, 17 | Typo errors                                  |
|                        |  |
|                        |  |
|                        |  |
|                        |  |
|                        |  |
|                        |  |

40W20V Evaluation Board with Quasi-Resonant CoolSET<sup>®</sup> ICE2QR0680Z  
 License to Infineon Technologies Asia Pacific Pte Ltd

AN-PS0066

**Eric Kok Siu Kam**

[Eric.kok@infineon.com](mailto:Eric.kok@infineon.com)

|   |   |
|---|---|
| <p><b>We Listen to Your Comments</b></p> <p>Any information within this document that you feel is wrong, unclear or missing at all?<br/>         Your feedback will help us to continuously improve the quality of this document.<br/>         Please send your proposal (including a reference to this document) to:<br/> <a href="mailto:comments@infineon.com">comments@infineon.com</a></p> |  |
|---|---|

**Table of Contents**

|      |  |           |
|------|--|-----------|
| 1    | <b>Content .....</b>                               | <b>6</b>  |
| 2    | <b>Evaluation Board .....</b>                      | <b>6</b>  |
| 3    | <b>List of Features .....</b>                      | <b>6</b>  |
| 4    | <b>Technical Specifications .....</b>              | <b>7</b>  |
| 5    | <b>Circuit Description.....</b>                    | <b>7</b>  |
| 5.1  | Mains Input and Rectification .....                | 7         |
| 5.2  | Integrated MOSFET and PWM Control.....             | 7         |
| 5.3  | Output Stage.....                                  | 7         |
| 5.4  | Feedback Loop.....                                 | 7         |
| 6    | <b>Circuit Operation .....</b>                     | <b>8</b>  |
| 6.1  | Startup Operation.....                             | 8         |
| 6.2  | Normal Mode Operation .....                        | 8         |
| 6.3  | Primary side peak current control.....             | 8         |
| 6.4  | Digital Frequency Reduction .....                  | 8         |
| 6.5  | Burst Mode Operation .....                         | 8         |
| 7    | <b>Protection Features .....</b>                   | <b>9</b>  |
| 7.1  | Vcc under voltage and over voltage protection..... | 9         |
| 7.2  | Foldback point protection .....                    | 9         |
| 7.3  | Open loop/over load protection.....                | 9         |
| 7.4  | Adjustable output overvoltage protection.....      | 9         |
| 7.5  | Short winding protection.....                      | 9         |
| 7.6  | Auto restart for over temperature protection ..... | 9         |
| 8    | <b>Circuit diagram .....</b>                       | <b>10</b> |
| 8.1  | PCB Top side.....                                  | 11        |
| 8.2  | PCB Bottom Layer .....                             | 11        |
| 9    | <b>Component List .....</b>                        | <b>12</b> |
| 10   | <b>Transformer Construction .....</b>              | <b>13</b> |
| 11   | <b>Test Results .....</b>                          | <b>14</b> |
| 11.1 | Efficiency and standby performance .....           | 14        |
| 12   | <b>References .....</b>                            | <b>17</b> |

## 1 Content

This application note is a description of 40W switching mode power supply evaluation board designed in a quasi-resonant flyback converter topology using ICE2QR0680Z Quasi-resonant CoolSET<sup>®</sup>. The target application of ICE2QR0680Z are for set-top box, portable game controller, DVD player, netbook adapter and auxiliary power supply for LCD TV, etc. With the CoolMOS<sup>®</sup> integrated in this IC, it greatly simplifies the design and layout of the PCB. Due to valley switching, the turn on voltage is reduced and this offers higher conversion efficiency comparing to hard-switching flyback converter. With the DCM mode control, the reverse recovery problem of secondary rectify diode is relieved. And for its natural frequency jittering with line voltage, the EMI performance is better. Infineon's digital frequency reduction technology enables a quasi-resonant operation till very low load. As a result, the system efficiency, over the entire load range, is significantly improved compared to conventional free running quasi resonant converter implemented with only maximum switching frequency limitation at light load. In addition, numerous adjustable protection functions have been implemented in ICE2QR0680Z to protect the system and customize the IC for the chosen application. In case of failure modes, like open control-loop/over load, output overvoltage, and transformer short winding, the device switches into Auto Restart Mode or Latch-off Mode. By means of the cycle-by-cycle peak current limitation plus foldback point correction, the dimension of the transformer and current rating of the secondary diode can both be optimized. Thus, a cost effective solution can be easily achieved.

## 2 Evaluation Board

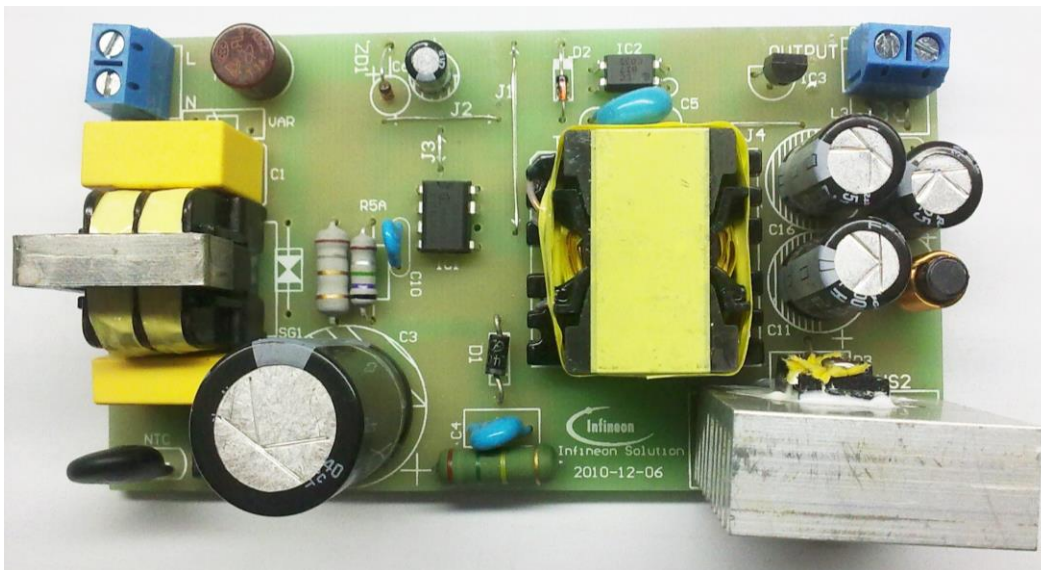


Figure 1 EVALQRC-ICE2QR0680Z

## 3 List of Features

|   |
|---|
| ➤ 800V avalanche rugged CoolMOS <sup>®</sup> with built in depletion startup cell |
| ➤ Quasi-resonant operation  |
| ➤ Digital frequency reduction with decreasing load                                |
| ➤ Cycle-by-cycle peak current limitation with foldback point correction           |
| ➤ Built-in digital soft-start   |
| ➤ Direct current sensing with internal Leading Edge Blanking Time                 |
| ➤ VCC under voltage protection: IC stop operation, recover with soft start        |
| ➤ VCC over voltage protection: IC stop operation, recover with soft start         |
| ➤ Openloop/Overload protection: Auto Restart                                      |
| ➤ Output overvoltage protection: Latch-off with adjustable threshold              |
| ➤ Short-winding protection: Latch-off   |
| ➤ Over temperature protection: Auto Restart                                       |

## 4 Technical Specifications

|   |                             |
|---|-----------------------------|
| Input voltage   | <b>85Vac~282Vac</b>         |
| Input frequency   | <b>50Hz, 60Hz</b>           |
| Output voltage and current                                      | <b>20V 2.0A</b>             |
| Output power  | <b>40W</b>                  |
| Average Efficiency  | <b>&gt;85% at full load</b> |
| Standby power   | <b>&lt;100mW@ no load</b>   |
| Minimum switching frequency at full load, minimum input voltage | <b>65kHz</b>                |

## 5 Circuit Description

### 5.1 Mains Input and Rectification

The AC line input side comprises the input fuse F1 as overcurrent protection. The X2 Capacitors C1 and Choke L1 form a main filter to minimize the feedback of RFI into the main supply. After the bridge rectifier BR1, together with a smoothing capacitor C2, provide a voltage of 70VDC to 380 VDC depending on mains input voltage.

### 5.2 Integrated MOSFET and PWM Control

ICE2QR0680Z is comprised of a power MOSFET and the quasi-resonant controller; this integrated solution greatly simplifies the circuit layout and reduces the cost of PCB manufacturing. The PWM switch-on is determined by the zero-crossing input signal and the value of the up/down counter. The PWM switch-off is determined by the feedback signal  $V_{FB}$  and the current sensing signal  $V_{CS}$ . ICE2QR0680Z also performs all necessary protection functions in flyback converters. Details about the information mentioned above are illustrated in the product datasheet.

### 5.3 Output Stage

On the secondary side, 20V output, the power is coupled out via a schottky diode D3. The capacitors C11 and C16 provide energy buffering followed by the L-C filters L3, C12 and C17 to reduce the output ripple and prevent interference between SMPS switching frequency and line frequency considerably. Storage capacitor C11 and C16 are designed to have an internal resistance (ESR) as small as possible. This is to minimize the output voltage ripple caused by the triangular current.

### 5.4 Feedback Loop

For feedback, the output is sensed by the voltage divider of R10, R11 and R12 and compared to TL431 internal reference voltage. C14, C15 and R8 comprise the compensation network. The output voltage of TL431 is converted to the current signal via opto-coupler IC2 and two resistors R6 and R7 for regulation control.

## 6 Circuit Operation

### 6.1 Startup Operation

Since there is a built-in startup cell in the ICE2QR0680Z, there is no need for external start up resistor, which can improve standby performance significantly.

When VCC reaches the turn on voltage threshold 18V, the IC begins with a soft start. The soft start implemented in ICE2QR0680Z is a digital time-based function. The preset soft start time is 12ms with 4 steps. If not limited by other functions, the peak voltage on CS pin will increase step by step from 0.32V to 1V finally. After IC turns on, the Vcc voltage is supplied by auxiliary windings of the transformer.

### 6.2 Normal Mode Operation

The secondary output voltage is built up after startup. The secondary regulation control is adopted with TL431 and opto-coupler. The compensation network C14, C15 and R8 constitute the external circuitry of the error amplifier of TL431. This circuitry allows the feedback to be precisely controlled with respect to dynamically varying load conditions, therefore providing stable control.

### 6.3 Primary side peak current control

The MOSFET drain source current is sensed via external resistor R5 and R5A. Since ICE2QR0680Z is a current mode controller, it would have a cycle-by-cycle primary current and feedback voltage control which can make sure the maximum power of the converter is controlled in every switching cycle.

### 6.4 Digital Frequency Reduction

During normal operation, the switching frequency for ICE2QR0680Z is digitally reduced with decreasing load. At light load, the MOSFET will be turned on not at the first minimum drain-source voltage time, but on the  $n^{\text{th}}$ . The counter is in range of 1 to 7, which depends on feedback voltage in a time-base. The feedback voltage decreases when the output power requirement decreases, and vice versa. Therefore, the counter is set by monitoring voltage  $V_{\text{FB}}$ . The counter will be increased with low  $V_{\text{FB}}$  and decreased with high  $V_{\text{FB}}$ . The thresholds are preset inside the IC.

### 6.5 Burst Mode Operation

At light load condition, the SMPS enters into Active Burst Mode. At this stage, the controller is always active but the Vcc must be kept above the switch off threshold. During active burst mode, the efficiency increase significantly and at the same time it supports low ripple on  $V_{\text{out}}$  and fast response on load jump.

For determination of entering Active Burst Mode operation, three conditions apply:

1. the feedback voltage is lower than the threshold of  $V_{\text{FBEB}}(1.25\text{V})$ . Accordingly, the peak current sense voltage across the shunt resistor is 0.18V;
2. the up/down counter is 7;
3. and a certain blanking time, 24ms ( $t_{\text{BEB}}$ ).

Once all of these conditions are fulfilled, the Active Burst Mode flip-flop is set and the controller enters Active Burst Mode operation. This multi-condition determination for entering Active Burst Mode operation prevents mis-triggering of entering Active Burst Mode operation, so that the controller enters Active Burst Mode operation only when the output power is really low during the preset blanking time.

During active burst mode, the maximum current sense voltage is reduced from 1V to 0.34V so as to reduce the conduction loss and the audible noise. At the burst mode, the FB voltage is changing like a saw-tooth between 3.0 and 3.6V. The switching frequency is set to a fix frequency of 52 kHz.

The feedback voltage immediately increases if there is a high load jump. This is observed by one comparator. As the current limit is 34% during Active Burst Mode a certain load is needed so that feedback voltage can exceed VLB (4.5V). After leaving active burst mode, maximum current can now be provided to stabilize  $V_{\text{O}}$ . In addition, the up/down counter will be set to 1 immediately after leaving Active Burst Mode. This is helpful to decrease the output voltage undershoot

## 7 Protection Features

### 7.1 Vcc under voltage and over voltage protection

During normal operation, the VCC voltage is continuously monitored. When the Vcc voltage falls below the under voltage lock out level ( $V_{VCCoff}$ ) or the Vcc voltage increases up to  $V_{VCCOVp}$ , the IC will enter into Auto Restart Mode.

### 7.2 Foldback point protection

For a quasi-resonant flyback converter, the maximum possible output power is increased when a constant current limit value is used for all the mains input voltage range. This is usually not desired as this will increase additional cost on transformer and output diode in case of output over power conditions.

The internal fold back protection is implemented to adjust the  $V_{cs}$  voltage limit according to the bus voltage. Here, the input line voltage is sensed using the current flowing out of ZC pin, during the MOSFET on-time. As the result, the maximum current limit will be lower at high input voltage and the maximum output power can be well limited versus the input voltage.

### 7.3 Open loop/over load protection

In case of open control loop, feedback voltage is pulled up with internally block. After a fixed blanking time 30ms, the IC enters into auto restart mode. In case of secondary short-circuit or overload, regulation voltage  $V_{FB}$  will also be pulled up, same protection is applied and IC will auto restart.

### 7.4 Adjustable output overvoltage protection

During off-time of the power switch, the voltage at the zero-crossing pin ZC is monitored for output overvoltage detection. If the voltage is higher than the preset threshold 3.7V for a preset period 100 $\mu$ s, the IC is latched off.

### 7.5 Short winding protection

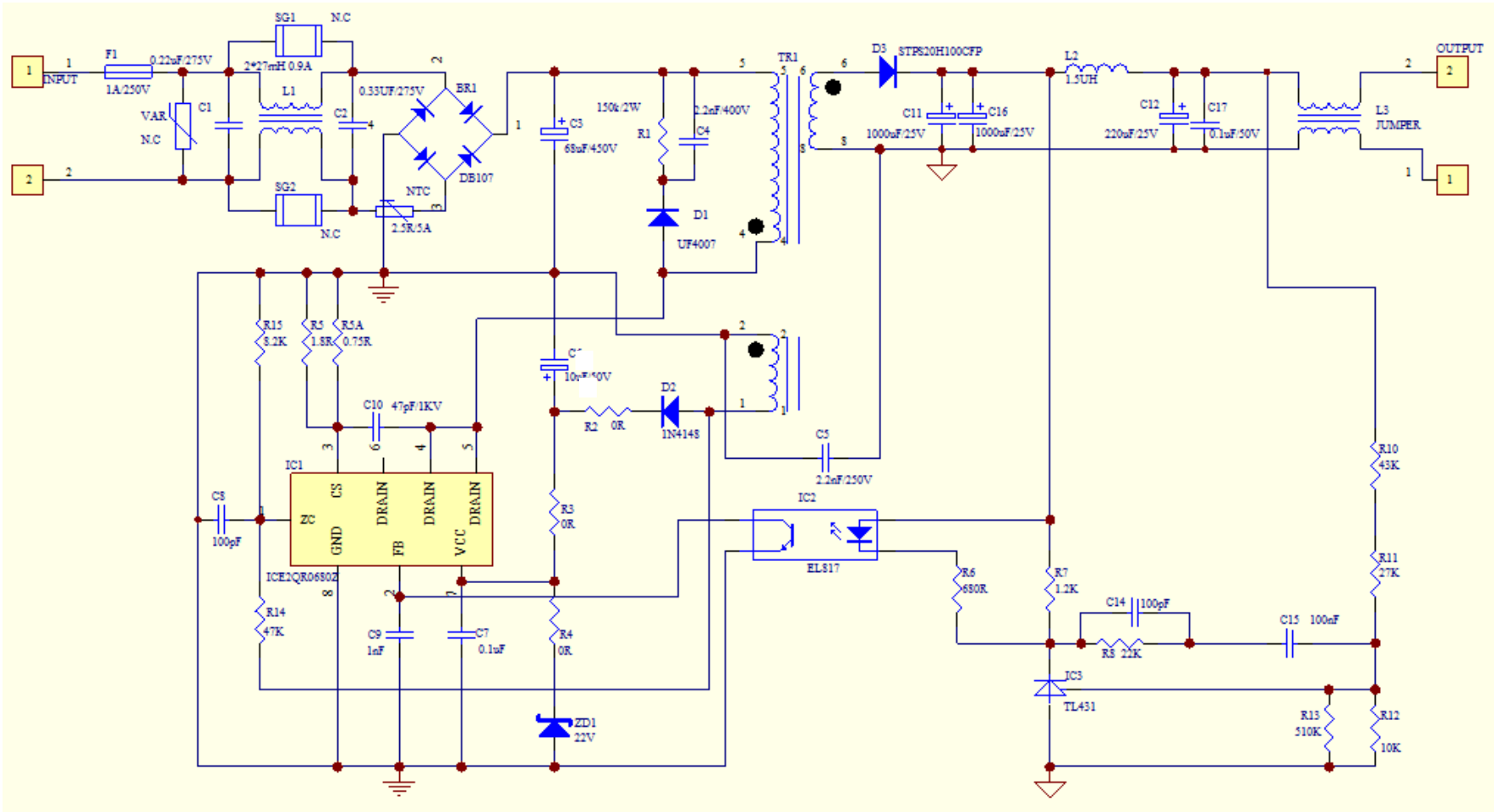
The source current of the MOSFET is sensed via two shunt resistors R4 and R4A in parallel. If the voltage at the current sensing pin is higher than the preset threshold  $V_{CSSW}$  of 1.68V during the on-time of the power switch, the IC is latched off. This constitutes a short winding protection. To avoid an accidental latch off, a spike blanking time of 190ns is integrated in the output of internal comparator.

### 7.6 Auto restart for over temperature protection

The IC has a built-in over temperature protection function. When the controller's temperature reaches 140 °C, the IC will shut down switch and enters into Auto Restart Mode. This can protect power MOSFET from overheated.



## 8 Circuit diagram



40W 20V SMPS Demoboard with ICE2QR0680Z

Figure 2 Schematics

8.1 PCB Top side

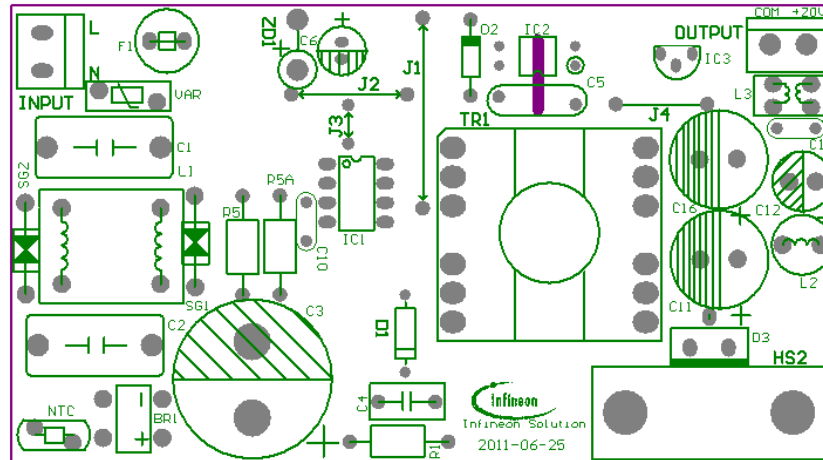


Figure 3 Component Legend – View from top side

8.2 PCB Bottom Layer

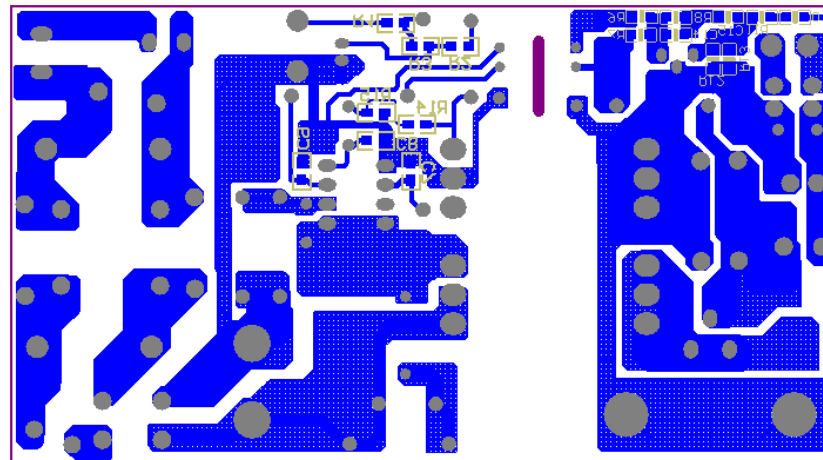


Figure 4 Solder side copper – View from top side

## 9 Component List

Table 1 Component List

| Items | Circuit code | Part type               | Part No.        | Manufacturer |
|-------|--------------|-------------------------|-----------------|--------------|
| 1     | BR1          | DB107, 1000V            |                 |              |
| 2     | C1           | 220nF/275Vac, X-cap     | 224K/275VAC15MM |              |
| 3     | C10          | 47pF/1kV                |                 |              |
| 4     | C11          | 1000uF/25V              |                 |              |
| 5     | C12          | 220uF/25V               |                 |              |
| 6     | C14          | 100pF                   |                 |              |
| 7     | C15          | 100nF                   |                 |              |
| 8     | C16          | 1000uF/25V              |                 |              |
| 9     | C17          | 0.1uF/50V               |                 |              |
| 10    | C3           | 68uF/450V               |                 |              |
| 11    | C4           | 2.2nF/400V              |                 |              |
| 12    | C5           | 2.2nF/250V, Y-cap       |                 |              |
| 13    | C7           | 0.1uF                   |                 |              |
| 14    | C8           | 100pF                   |                 |              |
| 15    | C9           | 1nF                     |                 |              |
| 16    | D1           | UF4007                  |                 |              |
| 17    | D2           | 1nN4148                 |                 |              |
| 18    | D3           | STPS20H100CFP, schottky |                 |              |
| 19    | F1           | 1.0A/250Vac, fuse       |                 |              |
| 20    | IC1          | ICE2QR0680Z, QR CoolSET | ICE2QR0680Z     | IFX          |
| 21    | IC2          | EL817, opto-coupler     |                 |              |
| 22    | IC3          | TL431                   |                 |              |
| 23    | L1           | 2 x 27mH, 0.9A, CMC     | B82732R2901B30  | Epcos        |
| 24    | L2           | 1.5uH                   |                 |              |
| 25    | R1           | 150k/2W                 |                 |              |
| 26    | R10          | 43k                     |                 |              |
| 27    | R11          | 27k                     |                 |              |
| 28    | R12          | 10k                     |                 |              |
| 29    | R13          | 510k                    |                 |              |
| 30    | R14          | 47k                     |                 |              |
| 31    | R15          | 8.2K                    |                 |              |
| 32    | R2           | 0R                      |                 |              |
| 33    | R3           | 0R                      |                 |              |
| 34    | R4           | 0R                      |                 |              |
| 35    | R5           | 1.8R                    |                 |              |
| 36    | R5A          | 0.75R                   |                 |              |
| 37    | R6           | 680R                    |                 |              |
| 38    | R7           | 1.2k                    |                 |              |
| 39    | R8           | 22k                     |                 |              |
| 40    | TR1          | Lp = 750uH, PQ2620 core |                 |              |
| 41    | ZD1          | 22V zener               |                 |              |

## 10 Transformer Construction

Core and material : PQ2620, PC40

Bobbin: Vertical Version

Primary Inductance,  $L_p=750\mu H \pm 10\%$ , measured between pin 4 and pin 5 (Gapped to Inductance)

Air Gap in center leg

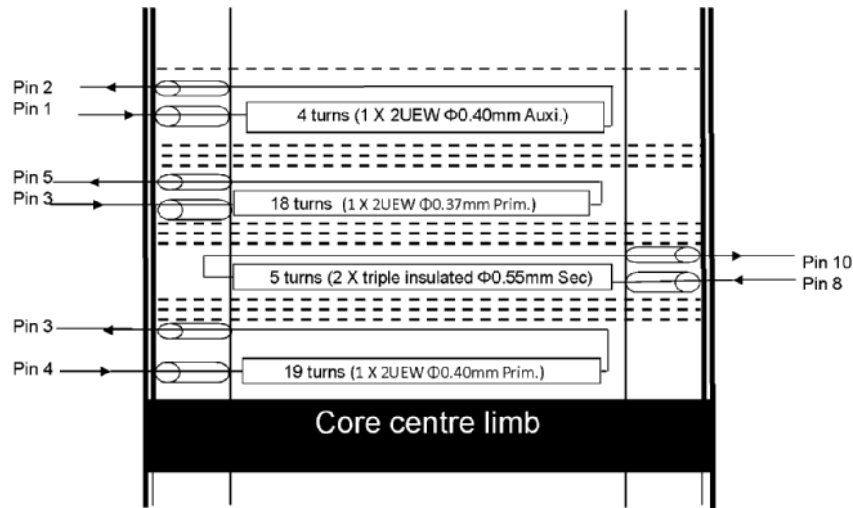


Figure 5 Transformer structure



Figure 6 Transformer complete – top view

Table 2 wire gauge used of the transformer windings

| Start | Stop | No. of turns | Wire Size                          | Layer     |
|-------|------|--------------|------------------------------------|-----------|
| 4     | 3    | 19           | 2UEW, $\phi$ 0.40mm *1p            | ½ primary |
| 8     | 10   | 5            | Triple insulated $\phi$ 0.55mm *2p | Secondary |
| 3     | 5    | 18           | 2UEW, $\phi$ 0.37mm *1p            | ½ primary |
| 1     | 2    | 4            | 2UEW, $\phi$ 0.40mm *1p            | Auxiliary |

## 11 Test Results

### 11.1 Efficiency and standby performance

**Table 3 Efficiency vs. Load**

| Voltage (Vac) | Input Power (W) | Output Voltage (V) | Output Current (A) | Output Power (W) | Efficiency (%) |
|---------------|-----------------|--------------------|--------------------|------------------|----------------|
| 85            | 11.68           | 20.26              | 0.5062             | 10.255612        | 87.80          |
| 85            | 23.46           | 20.26              | 1.0143             | 20.549718        | 87.59          |
| 85            | 35.15           | 20.27              | 1.5075             | 30.557025        | 86.93          |
| 85            | 47.67           | 20.27              | 2.0025             | 40.590675        | 85.15          |
| 115           | 11.56           | 20.26              | 0.5062             | 10.255612        | 88.72          |
| 115           | 23.45           | 20.26              | 1.0143             | 20.549718        | 87.63          |
| 115           | 34.37           | 20.27              | 1.5075             | 30.557025        | 88.91          |
| 115           | 45.93           | 20.27              | 2.0025             | 40.590675        | 88.38          |
| 150           | 11.533          | 20.26              | 0.5062             | 10.255612        | 88.92          |
| 150           | 22.9            | 20.26              | 1.0143             | 20.549718        | 89.74          |
| 150           | 34.01           | 20.27              | 1.5075             | 30.557025        | 89.85          |
| 150           | 45.15           | 20.27              | 2.0025             | 40.590675        | 89.90          |
| 180           | 11.567          | 20.26              | 0.5062             | 10.255612        | 88.66          |
| 180           | 22.83           | 20.26              | 1.0143             | 20.549718        | 90.01          |
| 180           | 33.79           | 20.27              | 1.5075             | 30.557025        | 90.43          |
| 180           | 45.05           | 20.27              | 2.0025             | 40.590675        | 90.10          |
| 230           | 11.67           | 20.26              | 0.5062             | 10.255612        | 87.88          |
| 230           | 22.85           | 20.26              | 1.0143             | 20.549718        | 89.93          |
| 230           | 33.8            | 20.27              | 1.5075             | 30.557025        | 90.41          |
| 230           | 44.87           | 20.27              | 2.0025             | 40.590675        | 90.46          |
| 282           | 11.82           | 20.26              | 0.5062             | 10.255612        | 86.76          |
| 282           | 22.92           | 20.26              | 1.0143             | 20.549718        | 89.66          |
| 282           | 33.89           | 20.27              | 1.5075             | 30.557025        | 90.17          |
| 282           | 44.85           | 20.27              | 2.0025             | 40.590675        | 90.50          |

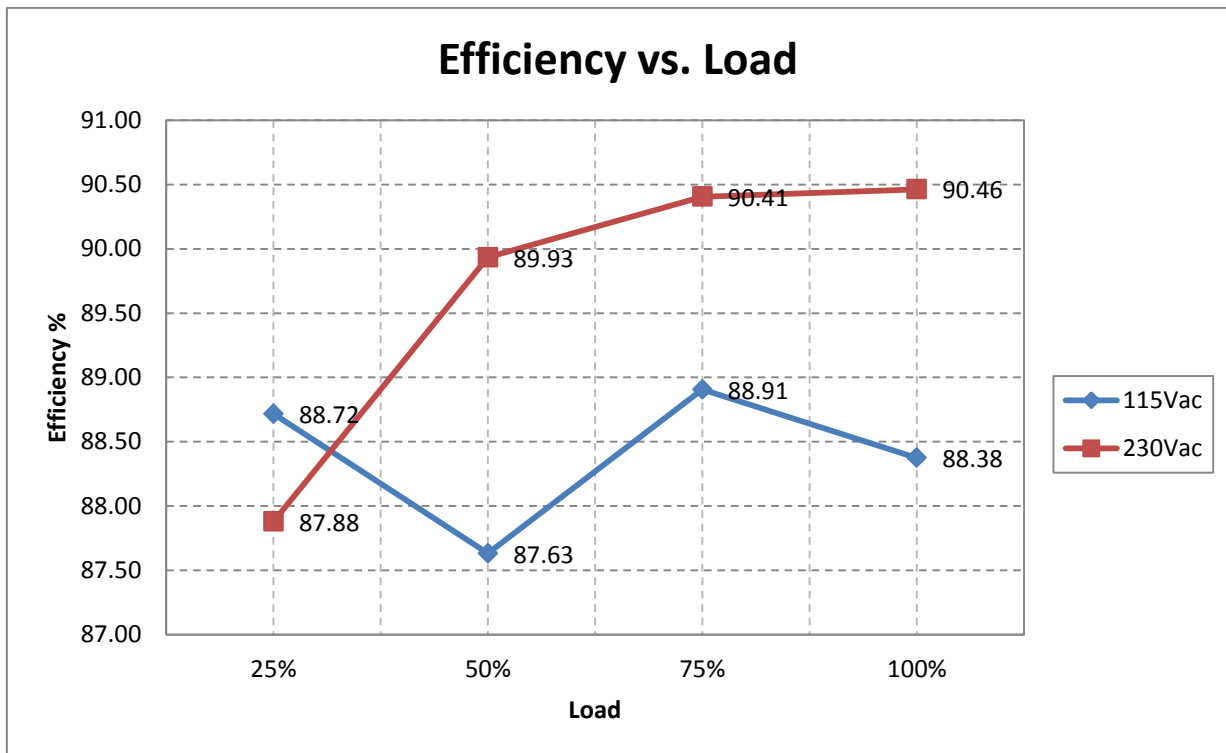
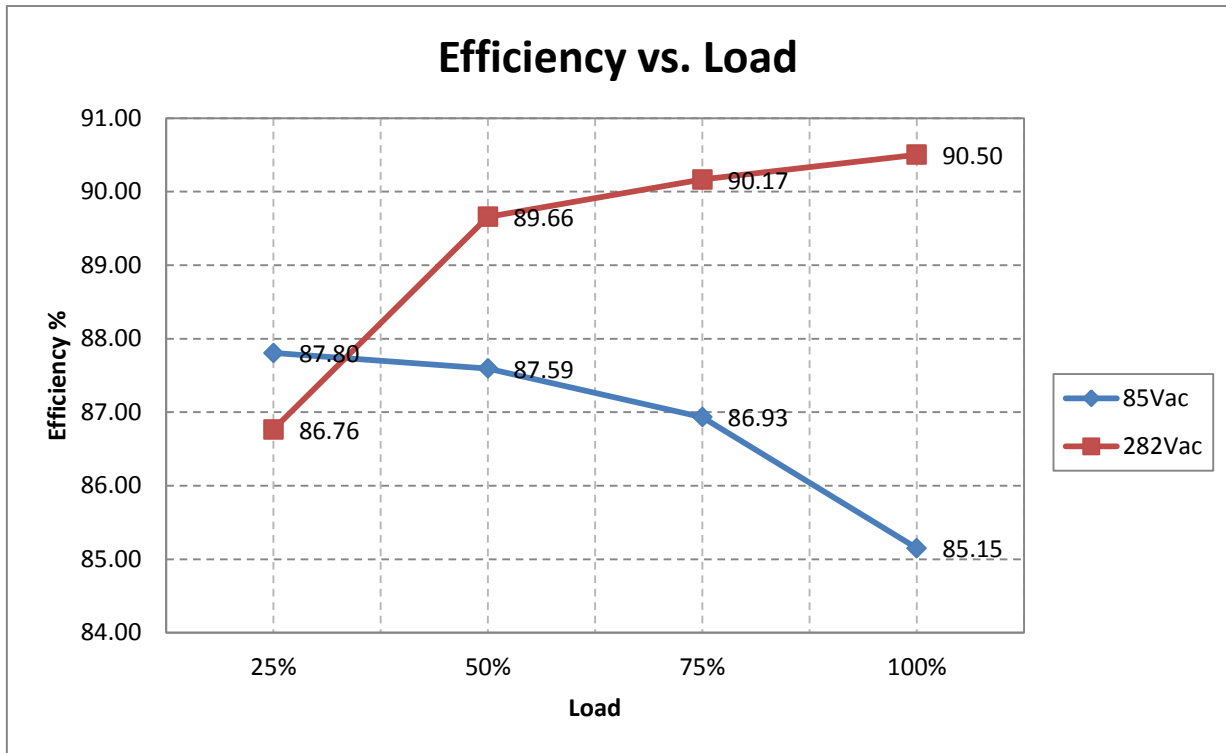


Figure 7 Efficiency vs. Output Load

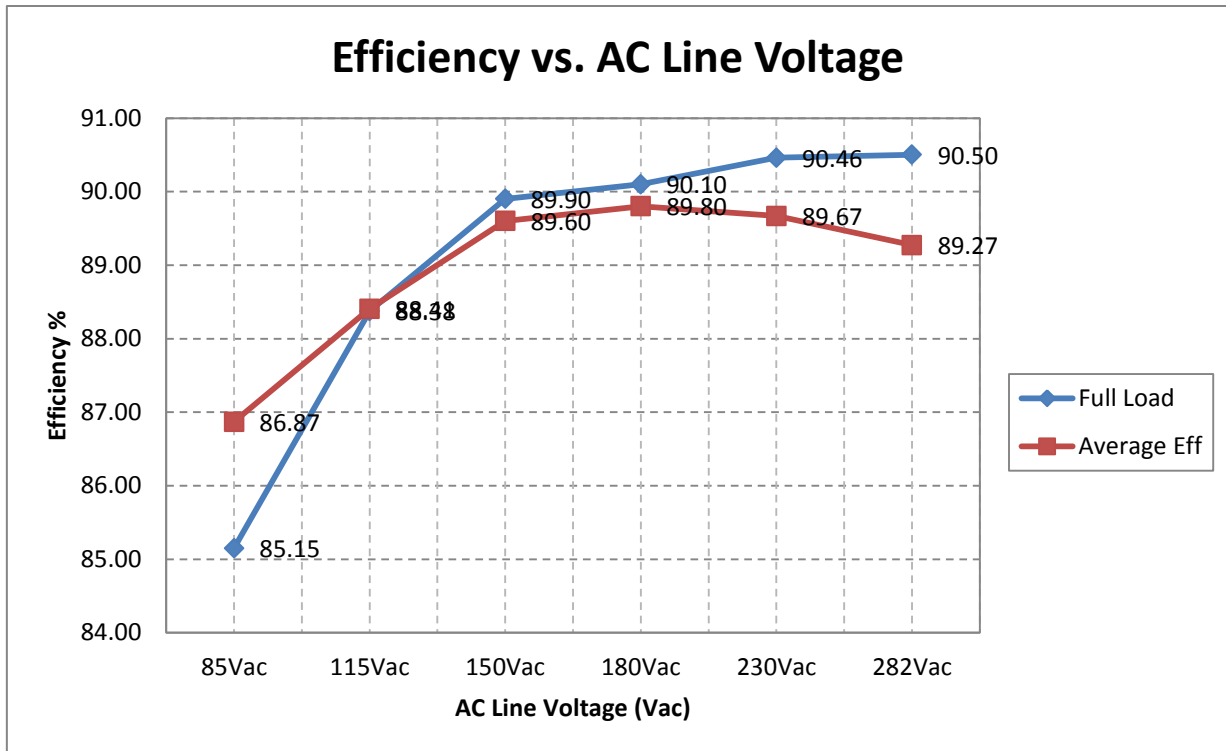


Figure 8 Efficiency vs AC line voltage

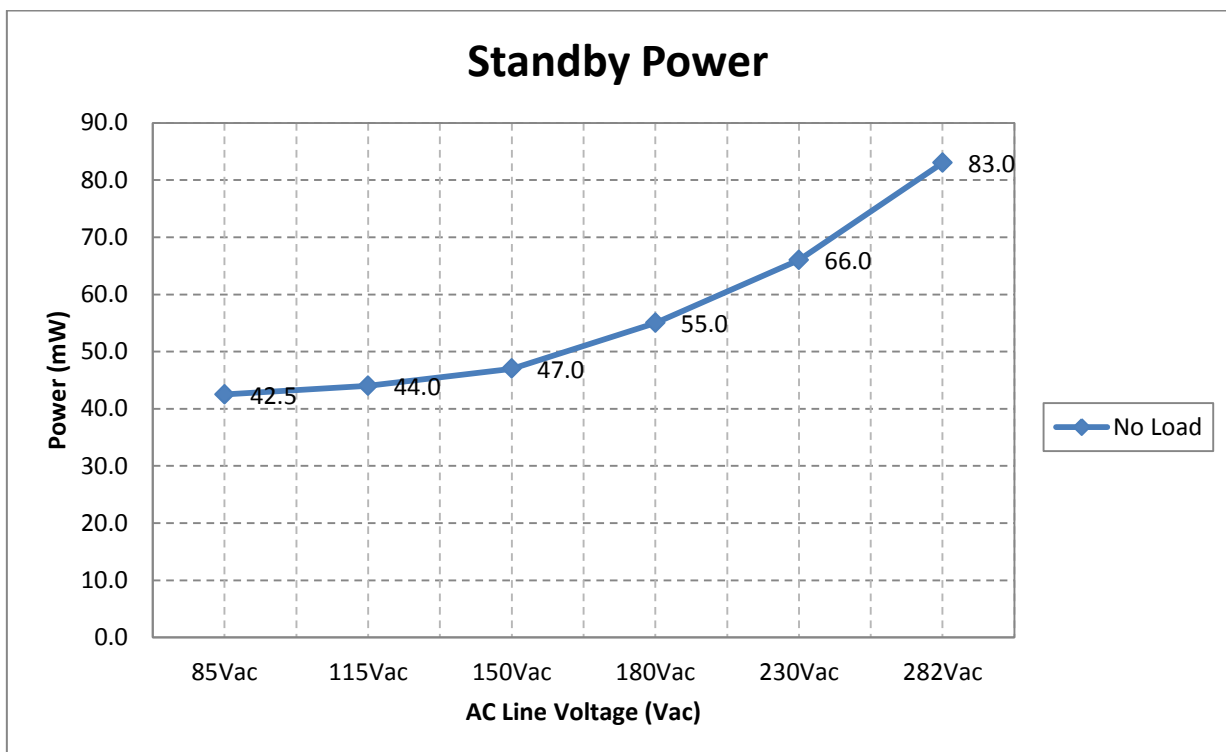


Figure 9 Standby input power vs AC line voltage

## 12 References

- [1] ICE2QR0680Z data sheet, Infineon Technologies AG, 2011
- [2] ICE2QRxx65/80x Quasi Resonance CoolSET Design Guide V1.1 8 August 2011 AN-PS0053, Infineon Technologies AG, 2011



Компания «Океан Электроники» предлагает заключение долгосрочных отношений при поставках импортных электронных компонентов на взаимовыгодных условиях!

Наши преимущества:

- Поставка оригинальных импортных электронных компонентов напрямую с производств Америки, Европы и Азии, а так же с крупнейших складов мира;
- Широкая линейка поставок активных и пассивных импортных электронных компонентов (более 30 млн. наименований);
- Поставка сложных, дефицитных, либо снятых с производства позиций;
- Оперативные сроки поставки под заказ (от 5 рабочих дней);
- Экспресс доставка в любую точку России;
- Помощь Конструкторского Отдела и консультации квалифицированных инженеров;
- Техническая поддержка проекта, помощь в подборе аналогов, поставка прототипов;
- Поставка электронных компонентов под контролем ВП;
- Система менеджмента качества сертифицирована по Международному стандарту ISO 9001;
- При необходимости вся продукция военного и аэрокосмического назначения проходит испытания и сертификацию в лаборатории (по согласованию с заказчиком);
- Поставка специализированных компонентов военного и аэрокосмического уровня качества (Xilinx, Altera, Analog Devices, Intersil, Interpoint, Microsemi, Actel, Aeroflex, Peregrine, VPT, Syfer, Eurofarad, Texas Instruments, MS Kennedy, Miteq, Cobham, E2V, MA-COM, Hittite, Mini-Circuits, General Dynamics и др.);

Компания «Океан Электроники» является официальным дистрибьютором и эксклюзивным представителем в России одного из крупнейших производителей разъемов военного и аэрокосмического назначения «JONHON», а так же официальным дистрибьютором и эксклюзивным представителем в России производителя высокотехнологичных и надежных решений для передачи СВЧ сигналов «FORSTAR».



## JONHON

«JONHON» (основан в 1970 г.)

Разъемы специального, военного и аэрокосмического назначения:

(Применяются в военной, авиационной, аэрокосмической, морской, железнодорожной, горно- и нефтедобывающей отраслях промышленности)

«FORSTAR» (основан в 1998 г.)

ВЧ соединители, коаксиальные кабели, кабельные сборки и микроволновые компоненты:

(Применяются в телекоммуникациях гражданского и специального назначения, в средствах связи, РЛС, а так же военной, авиационной и аэрокосмической отраслях промышленности).



Телефон: 8 (812) 309-75-97 (многоканальный)

Факс: 8 (812) 320-03-32

Электронная почта: [ocean@oceanchips.ru](mailto:ocean@oceanchips.ru)

Web: <http://oceanchips.ru/>

Адрес: 198099, г. Санкт-Петербург, ул. Калинина, д. 2, корп. 4, лит. А