



Axial Leaded Multilayer Ceramic Capacitors for General Purpose Class 1, Class 2 and Class 3, 50 V_{DC}, 100 V_{DC}, 200 V_{DC}, 500 V_{DC}



FEATURES

- High capacitance with small size
- High reliability
- Axial mounting style
- Material categorization:
For definitions of compliance please see www.vishay.com/doc?99912



RoHS
COMPLIANT

APPLICATIONS

- Temperature compensation
- Coupling and decoupling

| QUICK REFERENCE DATA | | | | | | | | | | |
|----------------------------|--------|------|------|------|-----------|---------|--------|--------|-----------|---------|
| DESCRIPTION | VALUE | | | | | | | | | |
| Ceramic Class | 1 | | | | 2 | | | | 3 | |
| Ceramic Dielectric | C0G | | | | X7R | | | | Y5V | |
| Voltage (V _{DC}) | 50 | 100 | 200 | 500 | 50 | 100 | 200 | 500 | 50 | 100 |
| Min. Capacitance (pF) | 10 | 10 | 33 | 33 | 100 | 100 | 100 | 100 | 10 000 | 10 000 |
| Max. Capacitance (pF) | 10 000 | 5600 | 2200 | 1000 | 1 000 000 | 220 000 | 47 000 | 33 000 | 1 000 000 | 220 000 |
| Mounting | Axial | | | | | | | | | |

MARKING

Marking indicates capacitance value and tolerance in accordance with “EIA 198” and voltage marks.

OPERATING TEMPERATURE RANGE

C0G, X7R: - 55 °C to + 125 °C

Y5V: - 30 °C to + 85 °C

TEMPERATURE CHARACTERISTICS

Class 1: C0G

Class 2: X7R

Class 3: Y5V

SECTIONAL SPECIFICATIONS

Climatic category (acc. to EN 60058-1)

Class 1 and 2: 55/125/21

Class 3: 30/85/21

APPROVALS

EIA 198

IEC 60384-9

DESIGN

The capacitors consist of a MLCC, and connection leads are made of tinned Fecuma wire, having diameters of 0.5 mm.

Coating is made of yellow colored flame retardant epoxy resin in accordance with UL 94 V-0.

CAPACITANCE RANGE

10 pF to 1000 nF

TOLERANCE ON CAPACITANCE

± 5 %, ± 10 %, ± 20 %, + 80 %/- 20 %

RATED VOLTAGE

50 V_{DC}, 100 V_{DC}, 200 V_{DC}, 500 V_{DC}

TEST VOLTAGE

- 50 V_{DC} and 100 V_{DC}: 250 % of rated voltage
- 200 V_{DC}: 150 % of rated voltage + 100 V_{DC}
- 500 V_{DC}: 130 % of rated voltage + 100 V_{DC}

INSULATION RESISTANCE AT 500 V_{DC}

- 50 V_{DC} and 100 V_{DC}: 100 GΩ or 1000 ΩF whichever is less at rated voltage within 2 min of charging
- 200 V_{DC} and 500 V_{DC}: 10 GΩ or 100 ΩF whichever is less at rated voltage within 2 min of charging

DISSIPATION FACTOR

Class 1 0.1 % max. when C ≥ 30 pF
(1 MHz 1 V where C ≤ 1000 pF, and 1 kHz 1 V where C > 1000 pF)

For C < 30 pF: DF = 100/(400 + 20 x C)

DF = Dissipation factor in %;

C = Capacitance value in pF

Class 2 2.5 % max. (1 kHz 1 V)

Class 3 5 % max. (1 kHz 1 V)

| DIMENSIONS (in millimeters) | | |
|-----------------------------|--------------------|--------------------|
| | | |
| SIZE CODE | Lb _{MAX.} | ØD _{MAX.} |
| 15 | 3.8 | 2.6 |
| 20 | 5.1 | 3.1 |

Note

- The leads are matte tinned FeCu wire.

| MARKING | | | |
|----------------------------|----------|----------|---|
| CAPACITANCE VALUE < 100 pF | Side one | Side two | XX: Capacitance code t: Tolerance code T: T.C. code V: Voltage code |
| | | | |
| CAPACITANCE VALUE ≥ 100 pF | Side one | Side two | XXX: Capacitance code t: Tolerance code T: T.C. code V: Voltage code |
| | | | |

| MARKING CODE DESCRIPTION | | | | |
|---|---|--|---|-------------------------------------|
| DDD | xxx | t | v | T |
| Date Code | Capacitance Code | Tolerance Code | Voltage Code | T.C. Code |
| The first digit is the year, the last two digits are the week. For example: 109 = 2011, 9 th week 217 = 2012, 17 th week | Two significant digits followed by one digit for the multiplier as given below. 1 = x 10, 2 = x 100, 3 = x 1000, 4 = x 10 000, 5 = x 100 000 | J = ± 5 % K = ± 10 % M = ± 20 % Z = + 80 %/- 20 % | 1 = 100 V 2 = 200 V 4 = 500 V 5 = 50 V | A = COG (NP0) C = X7R Y = Y5V |

Note

- The capacitance code indicates actual capacitance in pF when capacitance value < 100 pF.

| ORDERING CODE INFORMATION | | | | | | | |
|---------------------------|--|--|------------------------------------|------------------------------------|---|-----------------------|--------------------------|
| Product Type | Capacitance (pF) | Capacitance Tolerance | Size Code | TC Code | Rated Voltage | Lead Diameter | Packaging |
| A = Axial leaded MLCC | The first two digits are the significant figures of capacitance and the last digit is a multiplier as follows: 1 = *10 2 = * 100 3 = * 1000 4 = * 10 000 | J = ± 5 % K = ± 10 % M = ± 20 % Z = + 80 %/- 20 % | Please refer to relevant datasheet | Please refer to relevant datasheet | E = 25 V _{DC} F = 50 V _{DC} H = 100 V _{DC} K = 200 V _{DC} L = 500 V _{DC} | 5 = 0.50 mm ± 0.05 mm | TAA = Reel UAA = Ammo |



ORDERING CODES

| DIELECTRIC COG | | | | |
|----------------|--------------------|---------------------|---------------------|---------------------|
| CAP. (pF) | 50 V _{DC} | 100 V _{DC} | 200 V _{DC} | 500 V _{DC} |
| 10 | A100#15C0GF5### | A100#15C0GH5### | - | - |
| 12 | A120#15C0GF5### | A120#15C0GH5### | - | - |
| 15 | A150#15C0GF5### | A150#15C0GH5### | - | - |
| 18 | A180#15C0GF5### | A180#15C0GH5### | - | - |
| 22 | A220#15C0GF5### | A220#15C0GH5### | - | - |
| 27 | A270#15C0GF5### | A270#15C0GH5### | - | - |
| 33 | A330#15C0GF5### | A330#15C0GH5### | A330#15C0GK5### | A330#15C0GL5### |
| 39 | A390#15C0GF5### | A390#15C0GH5### | A390#15C0GK5### | A390#15C0GL5### |
| 47 | A470#15C0GF5### | A470#15C0GH5### | A470#15C0GK5### | A470#15C0GL5### |
| 56 | A560#15C0GF5### | A560#15C0GH5### | A560#15C0GK5### | A560#15C0GL5### |
| 68 | A680#15C0GF5### | A680#15C0GH5### | A680#15C0GK5### | A680#15C0GL5### |
| 82 | A820#15C0GF5### | A820#15C0GH5### | A820#15C0GK5### | A820#15C0GL5### |
| 100 | A101#15C0GF5### | A101#15C0GH5### | A101#15C0GK5### | A101#15C0GL5### |
| 120 | A121#15C0GF5### | A121#15C0GH5### | A121#15C0GK5### | A121#15C0GL5### |
| 150 | A151#15C0GF5### | A151#15C0GH5### | A151#15C0GK5### | A151#15C0GL5### |
| 180 | A181#15C0GF5### | A181#15C0GH5### | A181#15C0GK5### | A181#15C0GL5### |
| 220 | A221#15C0GF5### | A221#15C0GH5### | A221#15C0GK5### | A221#15C0GL5### |
| 270 | A271#15C0GF5### | A271#15C0GH5### | A271#15C0GK5### | A271#15C0GL5### |
| 330 | A331#15C0GF5### | A331#15C0GH5### | A331#15C0GK5### | A331#15C0GL5### |
| 390 | A391#15C0GF5### | A391#15C0GH5### | A391#15C0GK5### | A391#15C0GL5### |
| 470 | A471#15C0GF5### | A471#15C0GH5### | A471#15C0GK5### | A471#20C0GL5### |
| 560 | A561#15C0GF5### | A561#15C0GH5### | A561#15C0GK5### | A561#20C0GL5### |
| 680 | A681#15C0GF5### | A681#15C0GH5### | A681#15C0GK5### | A681#20C0GL5### |
| 820 | A821#15C0GF5### | A821#15C0GH5### | A821#15C0GK5### | A821#20C0GL5### |
| 1000 | A102#15C0GF5### | A102#20C0GH5### | A102#20C0GK5### | A102#20C0GL5### |
| 1200 | A122#15C0GF5### | A122#20C0GH5### | A122#20C0GK5### | - |
| 1500 | A152#15C0GF5### | A152#20C0GH5### | A152#20C0GK5### | - |
| 1800 | A182#15C0GF5### | A182#20C0GH5### | A182#20C0GK5### | - |
| 2200 | A222#15C0GF5### | A222#20C0GH5### | A222#20C0GK5### | - |
| 2700 | A272#20C0GF5### | A272#20C0GH5### | - | - |
| 3300 | A332#20C0GF5### | A332#20C0GH5### | - | - |
| 3900 | A392#20C0GF5### | A392#20C0GH5### | - | - |
| 4700 | A472#20C0GF5### | A472#20C0GH5### | - | - |
| 5600 | A562#20C0GF5### | A562#20C0GH5### | - | - |
| 6800 | A682#20C0GF5### | - | - | - |
| 8200 | A822#20C0GF5### | - | - | - |
| 10 000 | A103#20C0GF5### | - | - | - |

Notes

- Lead diameter is 0.5 mm
- # 5th digit is capacitance tolerance code: ± 5 % = J; ± 10 % = K
- # 13th, 14th and 15th digits are packaging code: Reel = TAA; Ammo = UAA



| DIELECTRIC X7R | | | | |
|----------------|--------------------|---------------------|---------------------|---------------------|
| CAP. (pF) | 50 V _{DC} | 100 V _{DC} | 200 V _{DC} | 500 V _{DC} |
| 100 | A101#15X7RF5### | A101#15X7RH5### | A101#15X7RK5### | A101#15X7RL5### |
| 120 | A121#15X7RF5### | A121#15X7RH5### | A121#15X7RK5### | A121#15X7RL5### |
| 150 | A151#15X7RF5### | A151#15X7RH5### | A151#15X7RK5### | A151#15X7RL5### |
| 180 | A181#15X7RF5### | A181#15X7RH5### | A181#15X7RK5### | A181#15X7RL5### |
| 220 | A221#15X7RF5### | A221#15X7RH5### | A221#15X7RK5### | A221#15X7RL5### |
| 270 | A271#15X7RF5### | A271#15X7RH5### | A271#15X7RK5### | A271#15X7RL5### |
| 330 | A331#15X7RF5### | A331#15X7RH5### | A331#15X7RK5### | A331#15X7RL5### |
| 390 | A391#15X7RF5### | A391#15X7RH5### | A391#15X7RK5### | A391#15X7RL5### |
| 470 | A471#15X7RF5### | A471#15X7RH5### | A471#15X7RK5### | A471#15X7RL5### |
| 560 | A561#15X7RF5### | A561#15X7RH5### | A561#15X7RK5### | A561#15X7RL5### |
| 680 | A681#15X7RF5### | A681#15X7RH5### | A681#15X7RK5### | A681#15X7RL5### |
| 820 | A821#15X7RF5### | A821#15X7RH5### | A821#15X7RK5### | A821#15X7RL5### |
| 1000 | A102#15X7RF5### | A102#15X7RH5### | A102#15X7RK5### | A102#15X7RL5### |
| 1200 | A122#15X7RF5### | A122#15X7RH5### | A122#15X7RK5### | A122#15X7RL5### |
| 1500 | A152#15X7RF5### | A152#15X7RH5### | A152#15X7RK5### | A152#15X7RL5### |
| 1800 | A182#15X7RF5### | A182#15X7RH5### | A182#15X7RK5### | A182#15X7RL5### |
| 2200 | A222#15X7RF5### | A222#15X7RH5### | A222#15X7RK5### | A222#15X7RL5### |
| 2700 | A272#15X7RF5### | A272#15X7RH5### | A272#15X7RK5### | A272#15X7RL5### |
| 3300 | A332#15X7RF5### | A332#15X7RH5### | A332#15X7RK5### | A332#20X7RL5### |
| 3900 | A392#15X7RF5### | A392#15X7RH5### | A392#15X7RK5### | A392#20X7RL5### |
| 4700 | A472#15X7RF5### | A472#15X7RH5### | A472#15X7RK5### | A472#20X7RL5### |
| 5600 | A562#15X7RF5### | A562#15X7RH5### | A562#15X7RK5### | A562#20X7RL5### |
| 6800 | A682#15X7RF5### | A682#15X7RH5### | A682#15X7RK5### | A682#20X7RL5### |
| 8200 | A822#15X7RF5### | A822#15X7RH5### | A822#15X7RK5### | A822#20X7RL5### |
| 10 000 | A103#15X7RF5### | A103#15X7RH5### | A103#15X7RK5### | A103#20X7RL5### |
| 12 000 | A123#15X7RF5### | A123#15X7RH5### | A123#15X7RK5### | A123#20X7RL5### |
| 15 000 | A153#15X7RF5### | A153#15X7RH5### | A153#15X7RK5### | A153#20X7RL5### |
| 18 000 | A183#15X7RF5### | A183#15X7RH5### | A183#15X7RK5### | A183#20X7RL5### |
| 22 000 | A223#15X7RF5### | A223#15X7RH5### | A223#15X7RK5### | A223#20X7RL5### |
| 27 000 | A273#15X7RF5### | A273#20X7RH5### | A273#20X7RK5### | A273#20X7RL5### |
| 33 000 | A333#15X7RF5### | A333#20X7RH5### | A333#20X7RK5### | A333#20X7RL5### |
| 39 000 | A393#15X7RF5### | A393#20X7RH5### | A393#20X7RK5### | - |
| 47 000 | A473#15X7RF5### | A473#20X7RH5### | A473#20X7RK5### | - |
| 56 000 | A563#15X7RF5### | A563#20X7RH5### | - | - |
| 68 000 | A683#15X7RF5### | A683#20X7RH5### | - | - |
| 82 000 | A823#15X7RF5### | A823#20X7RH5### | - | - |
| 100 000 | A104#15X7RF5### | A104#20X7RH5### | - | - |
| 150 000 | A154#20X7RF5### | A154#20X7RH5### | - | - |
| 220 000 | A224#20X7RF5### | A224#20X7RH5### | - | - |
| 330 000 | A334#20X7RF5### | - | - | - |
| 470 000 | A474#20X7RF5### | - | - | - |
| 560 000 | A564#20X7RF5### | - | - | - |
| 680 000 | A684#20X7RF5### | - | - | - |
| 1 000 000 | A105#20X7RF5### | - | - | - |

Notes

- Lead diameter is 0.5 mm
- # 5th digit is capacitance tolerance code: ± 10 % = K; ± 20 % = M
- # 13th, 14th and 15th digits are packaging code: Reel = TAA; Ammo = UAA



| DIELECTRIC Y5V | | |
|----------------|--------------------|---------------------|
| CAP. (pF) | 50 V _{DC} | 100 V _{DC} |
| 10 000 | A103Z15Y5VF5### | A103Z15Y5VH5### |
| 15 000 | A153Z15Y5VF5### | A153Z15Y5VH5### |
| 22 000 | A223Z15Y5VF5### | A223Z15Y5VH5### |
| 33 000 | A333Z15Y5VF5### | A333Z15Y5VH5### |
| 47 000 | A473Z15Y5VF5### | A473Z15Y5VH5### |
| 68 000 | A683Z15Y5VF5### | A683Z15Y5VH5### |
| 100 000 | A104Z15Y5VF5### | A104Z15Y5VH5### |
| 150 000 | A154Z15Y5VF5### | A154Z20Y5VH5### |
| 220 000 | A224Z15Y5VF5### | A224Z20Y5VH5### |
| 330 000 | A334Z20Y5VF5### | - |
| 470 000 | A474Z20Y5VF5### | - |
| 680 000 | A684Z20Y5VF5### | - |
| 1 000 000 | A105Z20Y5VF5### | - |

Notes

- Lead diameter is 0.5 mm
- Tolerance is + 80 %/- 20 %
- # 13th, 14th and 15th digits are packaging code: Reel = TAA; Ammo = UAA

TAPING AND PACKAGING

LABELLING

Each reel is provided with a label showing the following details:

Manufacturer, A style, capacitance, tolerance, batch number, quantity of components, rated voltage, dielectric.

On special request other designations can be shown.

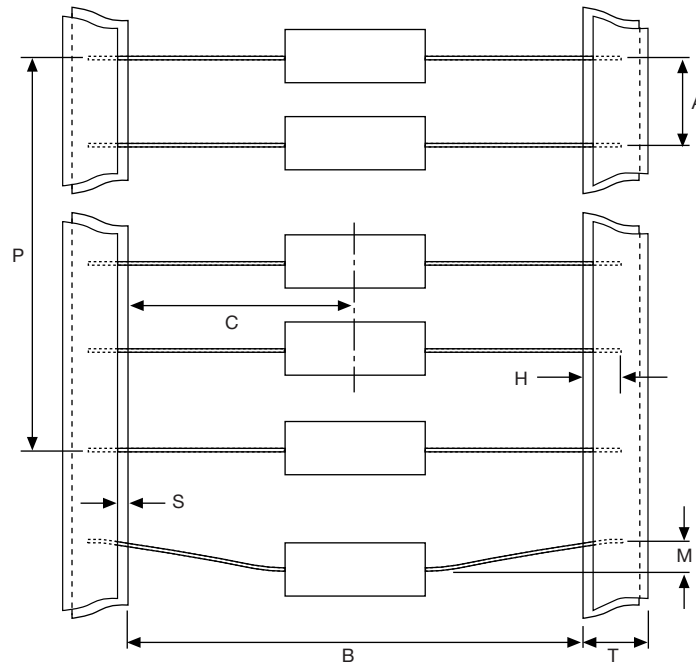
For example:



PN: A332K15X7RF5UAA Lot1: 11W601503 DC1: 0602
 QTY: 4000 Lot2: DC2:
 PO: Batch: 200602CN
 SO: Region: 9520 SL: 0010
 Ser.No: 0602A03681



| PACKAGING QUANTITIES AND BOX DIMENSIONS | | | |
|---|-----------|-----------------------------------|-------------------------------|
| PACKAGING | SIZE CODE | SMALLEST PACKAGING QUANTITY (SPQ) | BOX DIMENSIONS L x W x H (mm) |
| Tape on reel | 15, 20 | 7000 | 370 x 370 x 90 |
| Ammopack | 15, 20 | 4000 | 265 x 85 x 95 |

CAPACITORS ON BANDOLIERS FOR DIPPED AXIAL


| PARAMETER | SYMBOL | DIMENSIONS | |
|--|------------------|------------|---------------|
| | | mm | INCH |
| Inside tape spacing | B ⁽¹⁾ | 52.4 ± 1.5 | 2.062 ± 0.059 |
| Center to tape spacing | C | ± 0.8 | ± 0.031 |
| Cumulative pitch, 6 consecutive components | P | ± 1.5 | ± 0.059 |
| Components pitch | A | 5 ± 0.5 | 0.197 ± 0.015 |
| Lead bend | M | < 1.2 | < 0.047 |
| Exposed adhesive | S | < 0.51 | > 0.020 |
| Tape width | T | 6.35 | 0.250 |
| Lead sandwich | H | > 3.96 | > 0.156 |

Note

⁽¹⁾ Inside tape spacing 26.0 mm + 1.51 mm/- 0.0 mm is available on request

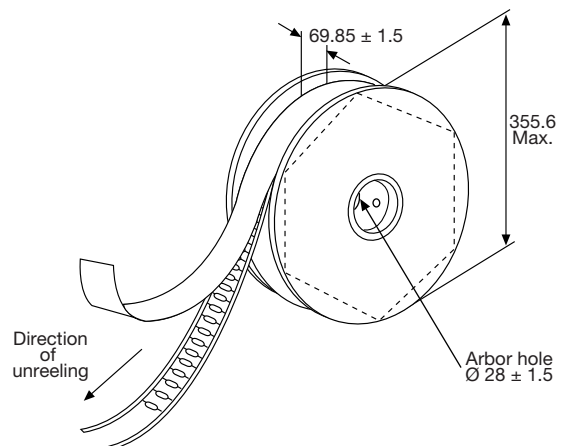
REEL DATA

A maximum of 0.5 % of the total number of capacitors per reel may be missing.

A maximum of 1 consecutive vacant positions is followed by 6 consecutive components.

Tape begins and ends with a minimum of 4 empty positions (180 mm tape).

Maximum of 5 splicers per reel.

REEL




AMMOPACK DATA

A maximum of 0.5 % of the total number of capacitors per reel may be missing.

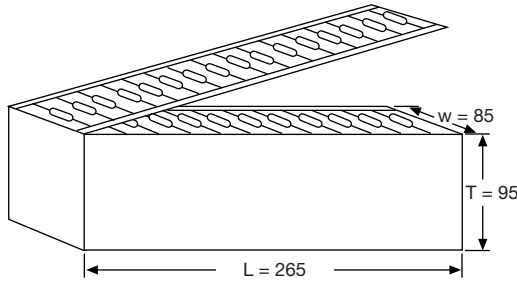
A maximum of 1 consecutive vacant positions is followed by 6 consecutive components.

Tape begins and ends with a minimum of 4 empty positions (180 mm tape).

Maximum of 5 splicers per reel.

The cumulative pitch tolerance over 20 consecutive units is not to exceed ± 1.0 mm.

AMMOPACK



REEL DIMENSIONS



| REEL SIZE | | (mm) |
|----------------|----------------|----------------|
| A | Outer diameter | 355.6 max. |
| L | Hole diameter | 28 ± 1.5 |
| K | Core diameter | 90 |
| H ₁ | Internal width | 69.9 ± 1.5 |



Disclaimer

ALL PRODUCT, PRODUCT SPECIFICATIONS AND DATA ARE SUBJECT TO CHANGE WITHOUT NOTICE TO IMPROVE RELIABILITY, FUNCTION OR DESIGN OR OTHERWISE.

Vishay Intertechnology, Inc., its affiliates, agents, and employees, and all persons acting on its or their behalf (collectively, "Vishay"), disclaim any and all liability for any errors, inaccuracies or incompleteness contained in any datasheet or in any other disclosure relating to any product.

Vishay makes no warranty, representation or guarantee regarding the suitability of the products for any particular purpose or the continuing production of any product. To the maximum extent permitted by applicable law, Vishay disclaims (i) any and all liability arising out of the application or use of any product, (ii) any and all liability, including without limitation special, consequential or incidental damages, and (iii) any and all implied warranties, including warranties of fitness for particular purpose, non-infringement and merchantability.

Statements regarding the suitability of products for certain types of applications are based on Vishay's knowledge of typical requirements that are often placed on Vishay products in generic applications. Such statements are not binding statements about the suitability of products for a particular application. It is the customer's responsibility to validate that a particular product with the properties described in the product specification is suitable for use in a particular application. Parameters provided in datasheets and/or specifications may vary in different applications and performance may vary over time. All operating parameters, including typical parameters, must be validated for each customer application by the customer's technical experts. Product specifications do not expand or otherwise modify Vishay's terms and conditions of purchase, including but not limited to the warranty expressed therein.

Except as expressly indicated in writing, Vishay products are not designed for use in medical, life-saving, or life-sustaining applications or for any other application in which the failure of the Vishay product could result in personal injury or death. Customers using or selling Vishay products not expressly indicated for use in such applications do so at their own risk. Please contact authorized Vishay personnel to obtain written terms and conditions regarding products designed for such applications.

No license, express or implied, by estoppel or otherwise, to any intellectual property rights is granted by this document or by any conduct of Vishay. Product names and markings noted herein may be trademarks of their respective owners.

Material Category Policy

Vishay Intertechnology, Inc. hereby certifies that all its products that are identified as RoHS-Compliant fulfill the definitions and restrictions defined under Directive 2011/65/EU of The European Parliament and of the Council of June 8, 2011 on the restriction of the use of certain hazardous substances in electrical and electronic equipment (EEE) - recast, unless otherwise specified as non-compliant.

Please note that some Vishay documentation may still make reference to RoHS Directive 2002/95/EC. We confirm that all the products identified as being compliant to Directive 2002/95/EC conform to Directive 2011/65/EU.

Vishay Intertechnology, Inc. hereby certifies that all its products that are identified as Halogen-Free follow Halogen-Free requirements as per JEDEC JS709A standards. Please note that some Vishay documentation may still make reference to the IEC 61249-2-21 definition. We confirm that all the products identified as being compliant to IEC 61249-2-21 conform to JEDEC JS709A standards.

Компания «Океан Электроники» предлагает заключение долгосрочных отношений при поставках импортных электронных компонентов на взаимовыгодных условиях!

Наши преимущества:

- Поставка оригинальных импортных электронных компонентов напрямую с производств Америки, Европы и Азии, а так же с крупнейших складов мира;
- Широкая линейка поставок активных и пассивных импортных электронных компонентов (более 30 млн. наименований);
- Поставка сложных, дефицитных, либо снятых с производства позиций;
- Оперативные сроки поставки под заказ (от 5 рабочих дней);
- Экспресс доставка в любую точку России;
- Помощь Конструкторского Отдела и консультации квалифицированных инженеров;
- Техническая поддержка проекта, помощь в подборе аналогов, поставка прототипов;
- Поставка электронных компонентов под контролем ВП;
- Система менеджмента качества сертифицирована по Международному стандарту ISO 9001;
- При необходимости вся продукция военного и аэрокосмического назначения проходит испытания и сертификацию в лаборатории (по согласованию с заказчиком);
- Поставка специализированных компонентов военного и аэрокосмического уровня качества (Xilinx, Altera, Analog Devices, Intersil, Interpoint, Microsemi, Actel, Aeroflex, Peregrine, VPT, Syfer, Eurofarad, Texas Instruments, MS Kennedy, Miteq, Cobham, E2V, MA-COM, Hittite, Mini-Circuits, General Dynamics и др.);

Компания «Океан Электроники» является официальным дистрибьютором и эксклюзивным представителем в России одного из крупнейших производителей разъемов военного и аэрокосмического назначения «JONHON», а так же официальным дистрибьютором и эксклюзивным представителем в России производителя высокотехнологичных и надежных решений для передачи СВЧ сигналов «FORSTAR».



JONHON

«JONHON» (основан в 1970 г.)

Разъемы специального, военного и аэрокосмического назначения:

(Применяются в военной, авиационной, аэрокосмической, морской, железнодорожной, горно- и нефтедобывающей отраслях промышленности)

«FORSTAR» (основан в 1998 г.)

ВЧ соединители, коаксиальные кабели, кабельные сборки и микроволновые компоненты:

(Применяются в телекоммуникациях гражданского и специального назначения, в средствах связи, РЛС, а так же военной, авиационной и аэрокосмической отраслях промышленности).



Телефон: 8 (812) 309-75-97 (многоканальный)

Факс: 8 (812) 320-03-32

Электронная почта: ocean@oceanchips.ru

Web: <http://oceanchips.ru/>

Адрес: 198099, г. Санкт-Петербург, ул. Калинина, д. 2, корп. 4, лит. А