

Industrial Transceiver with Integrated Step-Down Regulator and LDO

DESCRIPTION

Demonstration circuit 1733A is an industrial transceiver with integrated step-down regulator and LDO featuring the LT[®]3669. The board operates from 7.5V to 40V when JP7 is set to L⁺. When the JP7 is set to RES, the minimum input voltage is 16.5V. The board withstands transients up to 60V. The step-down regulator output is 5V. The LDO output is 3.3V. There are two assembly versions. DC1733A-A is for the LT3669 and DC1733A-B is for the LT3669-2. The difference is the LT3669 has an integrated catch diode. The LT3669-2 requires an external catch diode. Table 1 shows the differences between the two versions.

The board also provides various interfaces for line drivers and receivers. JP8 to JP11 set the signal sources or levels for TXEN1, TXEN2, TXD1 and TXD2.

The LT3669 data sheet gives complete descriptions of the part, operation and application information. The data sheet must be read in conjunction with this quick start guide for working on or modifying the demo circuit 1733A.

Design files for this circuit board are available. Call the LTC Factory.

LT, LTC, LTM, LT, Burst Mode are registered trademarks of Linear Technology Corporation. Other product names may be trademarks of the companies that manufacture the products..

PERFORMANCE SUMMARY Specifications are at T_A = 25°C

SYMBOL	PARAMETER	CONDITIONS	MIN	TYP	MAX	UNITS
L ⁺	Input Supply		7.5		40	V
V _{BUCK}	Output Voltage	Step-Down Regulator	4.75	5	5.25	V
V _{LDO}	Output Voltage	LDO	3.135	3.3	3.465	V
I _{BUCK}	Maximum Buck Output Current	LT3669, Step-Down Regulator V _{BUCK} = 5V	100			mA
		LT3669-2, Step-Down Regulator V _{BUCK} = 5V	300			mA
I _{LDO}	Maximum LDO Output Current	LT3669, VLDO = 3.3V	100			mA
		LT3669-2, VLDO = 3.3V	150			mA
FSW	Switching Frequency			600		kHz
EFF	Efficiency	LT3669, L ⁺ = 12V, V _{BUCK} = 5V, I _{BUCK} = 100mA		65		%
		LT3669-2, L ⁺ = 12V, V _{BUCK} = 5V, I _{BUCK} = 300mA		76		%
TRST	Reset Timeout Period	C5=100nF		12.5		ms

Table 1. Version Table

ASSY TYPE	U1	I _{LDO}	I _{BUCK}	C8	C9	D6	L1
DC1733A-A	LT3669EUFD	0.1A	0.1A	10μF	0.1μF	OPEN	82μH, CDRH4D22HPNP-820MC
DC1733A-B	LT3669EUFD-2	0.15A	0.3A	22μF	0.22μF	DFLS160	33μH, CDRH50D28RNP-330MC

QUICK START PROCEDURE

Demonstration circuit 1733A is easy to set up to evaluate the performance of the LT3669 or the LT3669-2. Refer to Figure 1 for proper measurement equipment setup and follow the procedure below:

NOTE. When measuring the input or output voltage ripple, care must be taken to avoid a long ground lead on the oscilloscope probe. Measure the input or output voltage ripple by touching the probe tip directly across the terminals of the input or output capacitors. See Figure 2 for proper scope probe technique.

1. Place jumpers in the proper positions.
2. With power off, connect an input power supply to L⁺ and L⁻/GND. The input supply can be a bench power supply or can be from the respective output from a master controller.
3. With power off, connect the load to V_{BUCK} and GND.
4. With power off, connect another load to V_{LDO} and GND.
5. Turn on the power at the input.
6. Check for the proper output voltages.
NOTE. If there is no output, temporarily disconnect the load to make sure that the load is not set too high or is shorted.
7. Once the proper output voltage is established, adjust the loads within the operating range and observe the output voltage regulation, ripple voltage, efficiency and other parameters.
8. To test driver and receiver functions, use JP8 to JP11 to set up the proper signal sources or levels for TXEN1, TXEN2, TXD1, and TXD2.
9. Set up or monitor other signals as needed.
10. Once the above signals are set up, observe driver's outputs and receiver's inputs and outputs.

QUICK START PROCEDURE

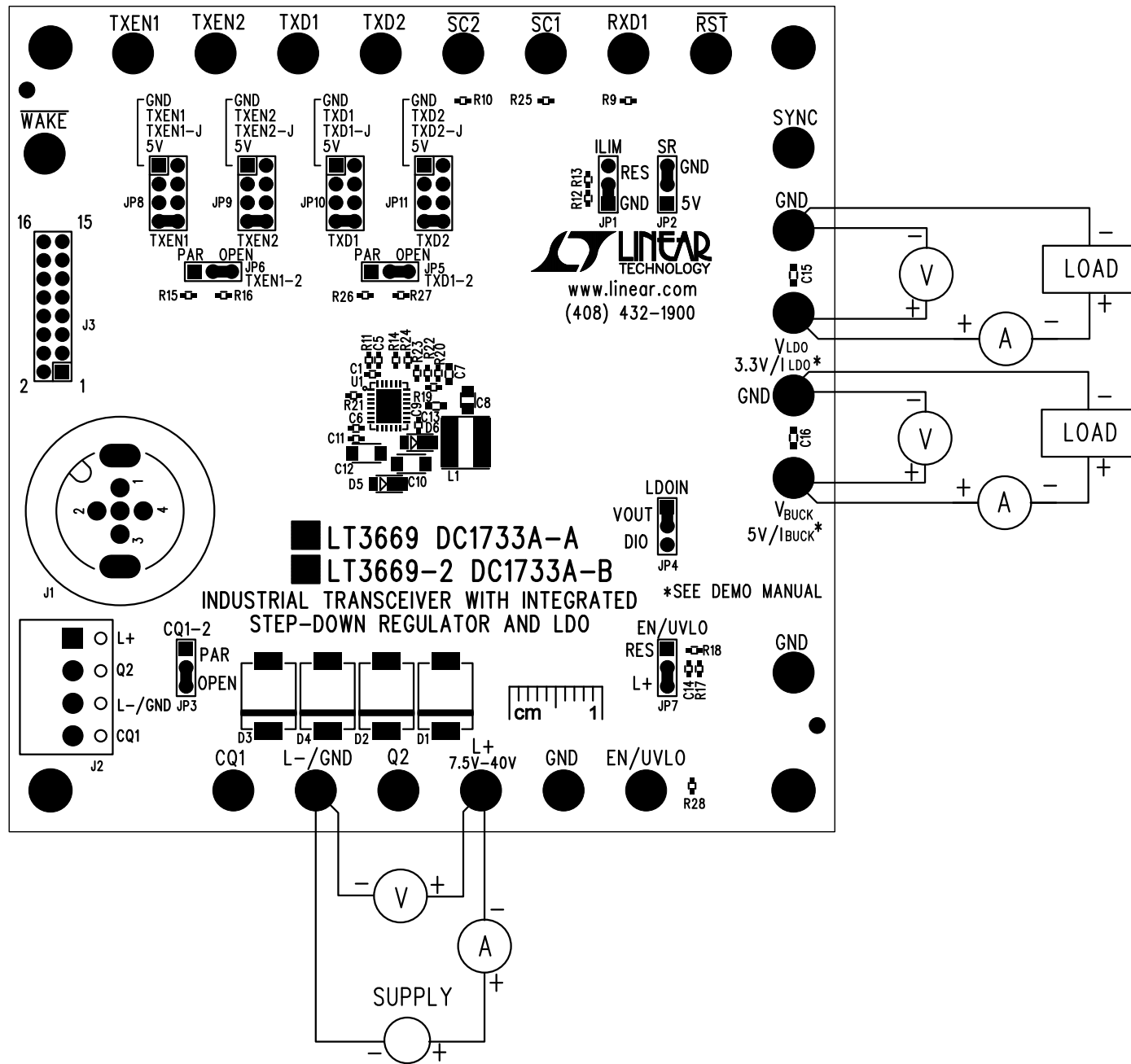


Figure 1. Proper Measurement Equipment Setup

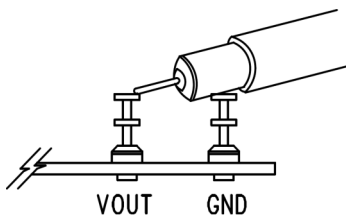


Figure 2. Measuring Input or Output Ripple

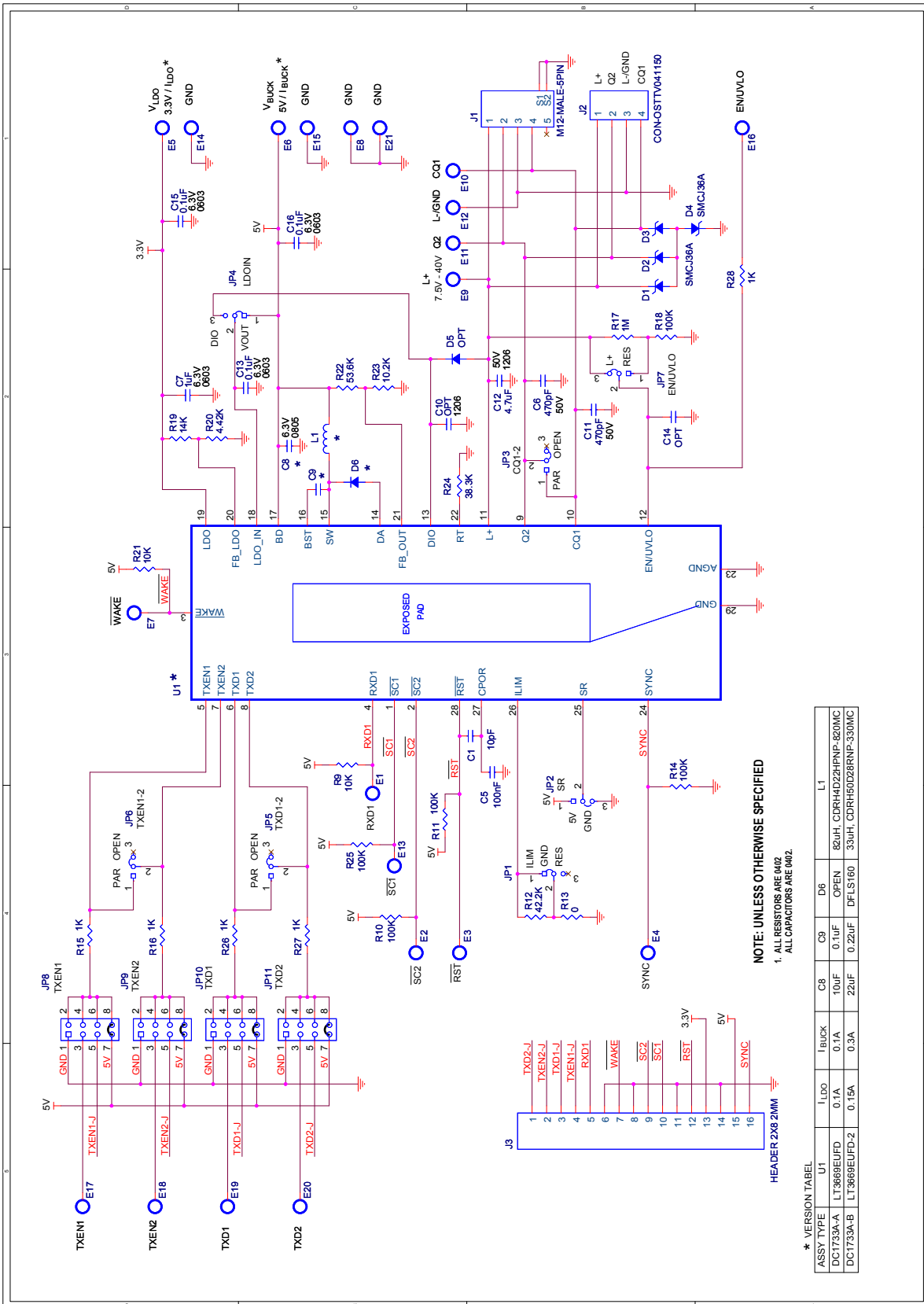
DEMO MANUAL DC1733A

PARTS LIST

ITEM	QTY	REFERENCE	PART DESCRIPTION	MANUFACTURER/PART NUMBER
Required Circuit Components				
1	1	C1	CAP., COG, 10pF, 25V, 5% 0402	AVX, 04023A100JAT2A
2	1	C5	CAP., X7R, 100nF, 25V, 10% 0402	AVX, 04023C104KAT2A
3	2	C6, C11	CAP., COG, 470pF, 50V, 5% 0402	AVX, 04025A471JAT2A
4	1	C7	CAP., X7R, 1µF, 6.3V, 10% 0603	AVX, 06036C105KAT2A
5	1	C12	CAP., X7R, 4.7µF, 50V, 10% 1206	MURATA, GRM31CR71H475KA88L
6	3	C13, C15, C16	CAP., X5R, 0.1µF, 25V, 10% 0603	AVX, 06033D104KAT2A
7	4	D1, D2, D3, D4	TVS, SMCJ36A SMC	Diodes Inc., SMCJ36A
8	2	R9, R21	RES., CHIP, 10K, 1/16W, 1% 0402	VISHAY, CRCW040210K0FKED
9	5	R10, R11, R14, R18, R25	RES., CHIP, 100K, 1/16W, 1% 0402	VISHAY, CRCW0402100KFKED
10	1	R12	RES., CHIP, 42.2K, 1/16W, 1% 0402	VISHAY, CRCW040242K2FKED
11	1	R13	RES., CHIP, 0Ω, 1/16W, 0402	VISHAY, CRCW04020000Z0ED
12	5	R15, R16, R26, R27, R28	RES., CHIP, 1K, 1/16W, 5% 0402	VISHAY, CRCW04021K00JKED
13	1	R17	RES., CHIP, 1M, 1/16W, 1% 0402	VISHAY, CRCW04021M00FKED
14	1	R19	RES., CHIP, 14K, 1/16W, 1% 0402	VISHAY, CRCW040214K0FKED
15	1	R20	RES., CHIP, 4.42K, 1/16W, 1% 0402	VISHAY, CRCW04024K42FKED
16	1	R22	RES., CHIP, 53.6K, 1/16W, 1% 0402	VISHAY, CRCW040253K6FKED
17	1	R23	RES., CHIP, 10.2K, 1/16W, 1% 0402	VISHAY, CRCW040210K2FKED
18	1	R24	RES., CHIP, 38.3K, 1/16W, 1% 0402	VISHAY, CRCW040238K3FKED
DC1733A-A Version Specific Components				
1	1	C8	CAP., X5R, 10µF, 6.3V, 10% 0805	MURATA, GRM219R60J106KE19D
2	1	C9	CAP., X7R, 0.1µF, 10V, 10% 0402	TDK, C1005X7R1A104K
3	0	D6(OPT)	DIODE, POWER-DI-123	
4	1	L1	INDUCTOR, 82µH	SUMIDA, CDRH4D22HPNP-820MC
5	1	U1	IC., LT3669EUFD QFN 4X5, 29 PIN	LINEAR TECH., LT3669EUFD#PBF
DC1733A-B Version Specific Components				
1	1	C8	CAP., X5R, 22µF, 6.3V, 10% 0805	MURATA, GRM21BR60J226M
2	1	C9	CAP., X7R, 0.22µF, 10V, 10% 0402	TDK, C1005X7R1A224K
3	1	D6	DIODE, POWER-DI-123	Diodes Inc., DFSL160-7
4	1	L1	INDUCTOR, 33µH	SUMIDA, CDRH50D28RNP-330MC
5	1	U1	IC., LT3669EUFD-2 QFN 4X5, 29 PIN	LINEAR TECHNOLOGY CORPORATION, LT3669EUFD-2#PBF
Additional Demo Board Circuit Components				
1	0	C10(OPT)	CAP., 1206	
2	0	C14(OPT)	CAP., 0402	
3	0	D5(OPT)	DIODE, POWER-DI-123	
Hardware: For Demo Board Only				
1	21	E1-E21	TESTPOINT, TURRET, .094" pbf	MILL-MAX, 2501-2-00-80-00-00-07-0
2	7	JP1-JP7	3 PIN 0.079 SINGLE ROW HEADER	SULLINS, NRPN031PAEN-RC
3	4	JP8-JP11	2X4, 0.079 DOUBLE ROW HEADER	SULLINS, NRPN042PAEN-RC
4	11	xJP1-xJP11	SHUNT, 0.079" CENTER	SAMTEC, 2SN-BK-G
5	1	J1	M12 CONNECTOR, 5 PIN	BINDER, 09 3441 500 05
6	1	J2	CONNECTOR, OSTTV041150	On shore tech., OSTTV041150
7	1	J3	2X8, 0.079 DOUBLE ROW HEADER	SULLINS, NRPN082PAEN-RC
8	4	(STAND-OFF)	STAND-OFF, NYLON 0.25"	KEystone, 8831(SNAP ON)

dc1733af

SCHEMATIC DIAGRAM



* VERSION TABLE

ASSY TYPE	U1	I _{BUCK}	C8	C9	D6	L1
DC1733A-A	LT3869EUFD	0.1A	10uF	0.1uF	OPEN	82uH, CDRH422HPNP-820MC
DC1733A-B	LT3869EUFD-2	0.15A	22uF	0.22uF	DFLS160	33uH, CDRH50028RNP-330MC

Figure 3. DC1733A Demo Circuit Schematic

DEMO MANUAL DC1733A

DEMONSTRATION BOARD IMPORTANT NOTICE

Linear Technology Corporation (LTC) provides the enclosed product(s) under the following **AS IS** conditions:

This demonstration board (DEMO BOARD) kit being sold or provided by Linear Technology is intended for use for **ENGINEERING DEVELOPMENT OR EVALUATION PURPOSES ONLY** and is not provided by LTC for commercial use. As such, the DEMO BOARD herein may not be complete in terms of required design-, marketing-, and/or manufacturing-related protective considerations, including but not limited to product safety measures typically found in finished commercial goods. As a prototype, this product does not fall within the scope of the European Union directive on electromagnetic compatibility and therefore may or may not meet the technical requirements of the directive, or other regulations.

If this evaluation kit does not meet the specifications recited in the DEMO BOARD manual the kit may be returned within 30 days from the date of delivery for a full refund. **THE FOREGOING WARRANTY IS THE EXCLUSIVE WARRANTY MADE BY THE SELLER TO BUYER AND IS IN LIEU OF ALL OTHER WARRANTIES, EXPRESSED, IMPLIED, OR STATUTORY, INCLUDING ANY WARRANTY OF MERCHANTABILITY OR FITNESS FOR ANY PARTICULAR PURPOSE. EXCEPT TO THE EXTENT OF THIS INDEMNITY, NEITHER PARTY SHALL BE LIABLE TO THE OTHER FOR ANY INDIRECT, SPECIAL, INCIDENTAL, OR CONSEQUENTIAL DAMAGES.**

The user assumes all responsibility and liability for proper and safe handling of the goods. Further, the user releases LTC from all claims arising from the handling or use of the goods. Due to the open construction of the product, it is the user's responsibility to take any and all appropriate precautions with regard to electrostatic discharge. Also be aware that the products herein may not be regulatory compliant or agency certified (FCC, UL, CE, etc.).

No License is granted under any patent right or other intellectual property whatsoever. **LTC assumes no liability for applications assistance, customer product design, software performance, or infringement of patents or any other intellectual property rights of any kind.**

LTC currently services a variety of customers for products around the world, and therefore this transaction **is not exclusive**.

Please read the DEMO BOARD manual prior to handling the product. Persons handling this product must have electronics training and observe good laboratory practice standards. **Common sense is encouraged.**

This notice contains important safety information about temperatures and voltages. For further safety concerns, please contact a LTC application engineer.

Mailing Address:

Linear Technology
1630 McCarthy Blvd.
Milpitas, CA 95035

Copyright © 2004, Linear Technology Corporation

Компания «Океан Электроники» предлагает заключение долгосрочных отношений при поставках импортных электронных компонентов на взаимовыгодных условиях!

Наши преимущества:

- Поставка оригинальных импортных электронных компонентов напрямую с производств Америки, Европы и Азии, а так же с крупнейших складов мира;
- Широкая линейка поставок активных и пассивных импортных электронных компонентов (более 30 млн. наименований);
- Поставка сложных, дефицитных, либо снятых с производства позиций;
- Оперативные сроки поставки под заказ (от 5 рабочих дней);
- Экспресс доставка в любую точку России;
- Помощь Конструкторского Отдела и консультации квалифицированных инженеров;
- Техническая поддержка проекта, помощь в подборе аналогов, поставка прототипов;
- Поставка электронных компонентов под контролем ВП;
- Система менеджмента качества сертифицирована по Международному стандарту ISO 9001;
- При необходимости вся продукция военного и аэрокосмического назначения проходит испытания и сертификацию в лаборатории (по согласованию с заказчиком);
- Поставка специализированных компонентов военного и аэрокосмического уровня качества (Xilinx, Altera, Analog Devices, Intersil, Interpoint, Microsemi, Actel, Aeroflex, Peregrine, VPT, Syfer, Eurofarad, Texas Instruments, MS Kennedy, Miteq, Cobham, E2V, MA-COM, Hittite, Mini-Circuits, General Dynamics и др.);

Компания «Океан Электроники» является официальным дистрибьютором и эксклюзивным представителем в России одного из крупнейших производителей разъемов военного и аэрокосмического назначения «JONHON», а так же официальным дистрибьютором и эксклюзивным представителем в России производителя высокотехнологичных и надежных решений для передачи СВЧ сигналов «FORSTAR».



JONHON

«JONHON» (основан в 1970 г.)

Разъемы специального, военного и аэрокосмического назначения:

(Применяются в военной, авиационной, аэрокосмической, морской, железнодорожной, горно- и нефтедобывающей отраслях промышленности)

«FORSTAR» (основан в 1998 г.)

ВЧ соединители, коаксиальные кабели, кабельные сборки и микроволновые компоненты:

(Применяются в телекоммуникациях гражданского и специального назначения, в средствах связи, РЛС, а так же военной, авиационной и аэрокосмической отраслях промышленности).



Телефон: 8 (812) 309-75-97 (многоканальный)

Факс: 8 (812) 320-03-32

Электронная почта: ocean@oceanchips.ru

Web: <http://oceanchips.ru/>

Адрес: 198099, г. Санкт-Петербург, ул. Калинина, д. 2, корп. 4, лит. А