

# Manual Switches

# AML51 Series

## Buttons/Lens for Switches and Indicators

### AML51 PUSHBUTTON ORDER GUIDE (All possible color combinations may not be available.)

For Incandescent or non-lighted display switches and pushbutton style indicators.

<b>AML51-C</b>	<b>10</b>	<b>R</b>	<b>—</b>
<b>For AML11, 21, 31 switches and AML41 indicators: Pushbutton Style</b>	<b>Display Legend/Type</b>	<b>Full Color or 1st Color Split</b>	<b>2nd Color Split</b>
 <b>AML51-C</b>  <b>AML51-F</b>  <b>AML51-G</b>  <b>AML51-A</b>  <b>AML51-H</b>  <b>AML51-N*</b>  <b>AML51-B*</b>  <b>AML51-E*</b>  <b>AML51-M*</b>  <b>AML51-R*</b>	<b>Transmitted Color</b> <b>10</b> No legend <b>20</b> With legend on cap.  <b>Transmitted Color</b> (Clear cap and color insert) <b>11</b> No legend <b>21</b> With legend on insert  <b>Dead Front</b> (Smoky gray cap and color insert) <b>30</b> No legend <b>40</b> With legend on insert  <b>****Projected Color</b> (White cap and color insert) <b>50</b> No legend <b>60</b> With legend on cap	<b>R</b> Red <b>Y</b> Yellow <b>G</b> Green <b>B</b> Blue <b>W****</b> White <b>K***</b> Black <b>L***</b> Gray <b>A**</b> Amber	<b>R</b> Red <b>Y</b> Yellow <b>G</b> Green <b>B</b> Blue <b>W****</b> White <b>K***</b> Black <b>L***</b> Gray <b>A**</b> Amber
<b>For AML41D indicators only:</b>			
 <b>AML51-D</b>			

Example: **AML51-C10R**  
 Square full color button; with transmitted color, no legend; red.

\*\*Available with transmitted color and dead front only.  
 \*\*\*Black and gray not recommended for lighted display.  
 †AML51-N buttons not available with Display/Legend Types 10 and 20.  
 Note: Dimensions include the .060 in bezel.

\* Available with transmitted color (10 or 20) only.  
 \*\*\*\* Insert is clear for projected color when "W" is used.

### AML51 LENS ORDER GUIDE (All possible color combinations may not be available.)

For incandescent display AML41J, K, and L lens style indicators only.

<b>AML51-J</b>	<b>10</b>	<b>R</b>		
<b>Lens style</b>	<b>Display/Legend Type</b>	<b>Full Color or 1st Color Split</b>	<b>2nd Color Split</b>	<b>3rd Color Split</b>
 <b>AML51-J</b>   <b>AML51-K</b>   <b>AML51-L</b>	<b>Transmitted Color</b> <b>10</b> No legend <b>20</b> With legend  <b>Transmitted Color</b> (Clear cap and color insert) <b>11</b> No legend <b>21</b> With legend  <b>Dead Front</b> (Smoky gray cap and color insert) <b>30</b> No legend <b>40</b> With legend  <b>****Projected Color</b> (White cap and color insert) <b>50</b> No legend <b>60</b> With legend	<b>R</b> Red  <b>Y</b> Yellow  <b>G</b> Green  <b>B</b> Blue  <b>W****</b> White  <b>A**</b> Amber	<b>R</b> Red  <b>Y</b> Yellow  <b>G</b> Green  <b>B</b> Blue  <b>W****</b> White  <b>A**</b> Amber	<b>R</b> Red  <b>Y</b> Yellow  <b>G</b> Green  <b>B</b> Blue  <b>W****</b> White  <b>A**</b> Amber

**AML51 lens buttons** provide added display area by snapping onto and covering the bezel of AML41J, K, and L indicators. They do not fit other indicators or switches.

Example: **AML51-J10R**  
 Rectangular lens type button; full color; transmitted color, no legend; red.

#### HOW TO ORDER BUTTON LEGENDS

When specifying legended buttons, submit a legend order sheet to cover each listing. To insure proper legend orientation, AML housings (when viewed from the panel front) should have the "MICRO SWITCH" identification facing UP on square devices and UP or to the LEFT on rectangular.

Button legend order sheets are shown on the following pages. Reproduce them on your office copier.

<b>Legend Sheet</b>	<b>Form No.</b>
AML51 Pushbuttons	FO-63394
AML51 Lens buttons	FO-63395
AML52 Pushbuttons	FO-63504
AML53 Paddle switch covers	FO-63567
AML55 Paddle switch covers	FO-63565
AML54 Rockers	FO-63566
AML56 Rockers	FO-63564

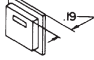
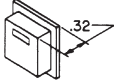
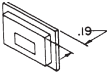
\*\* Not available with projected color.  
 \*\*\*\* Insert is clear for projected color when "W" is used.

# Manual Switches

## Buttons for Switches and Indicators

**AML52 BUTTON ORDER GUIDE** (All possible color combinations may not be available.)

For AML12, AML22 (w/o light pipe), AML32, AML42 LED display.

AML52-N	10	R
Button Type	Display/Legend Type	Button Color
<p><b>For LED Devices</b> <b>AML52-C</b></p>  <p><b>AML52-A*</b></p> 	<p><b>Transmitted Color</b></p> <p><b>10</b> No Legend</p> <p><b>20</b> With Legend</p>	<p><b>R</b> Red</p> <p><b>Y</b> Yellow</p> <p><b>G</b> Green</p> <p><b>B</b> Blue</p> <p><b>W</b> White</p> <p><b>K</b> Black</p> <p><b>A</b> Amber</p> <p><b>L</b> Gray</p>
<p><b>For AML32 Neon Devices</b> <b>AML52-N</b></p> 		

Examples:

**AML52-N10R**

Rectangular full screen; for use on neon power switch with transmitted color, no legend; red button.

**AML52-C10K**

Square full screen; for use with LED device; transmitted color, no legend; black button.

## AML 52/57 Pushbutton Legend Sheet/Product Specification for L.E.D. & Neon Button

Account No \_\_\_\_\_ Page \_\_\_\_ of \_\_\_\_

Catalog Listing  
**AML52** —  
 Customer P.O. No. \_\_\_\_\_ Customer Dwg. No. \_\_\_\_\_  
 MICRO SWITCH Sales Order \_\_\_\_\_ Line Number \_\_\_\_\_ Schedule No. \_\_\_\_\_

Customer: \_\_\_\_\_  
 Address: \_\_\_\_\_  
 \_\_\_\_\_ (city) \_\_\_\_\_ (state) \_\_\_\_\_

LEGEND ORDER GUIDE											
Button: Type Orientation	Figure NO	Max Lines			Max Characters			5/16	5/16	5/16	
		5/64	7/64	9/64	13/64	5/64	7/64				9/64
	<b>1</b>	3	2	1	1	1	1	7	5	3	1
	<b>2</b>	3	2	1	1	1	1	7	5	3	1
	<b>3</b>	1	1	0	0	0	0	12	10	0	0
	<b>4</b>	1	1	0	0	0	0	12	10	0	0
	<b>5</b>	3	2	1	1	1	1	7	5	4	3
	<b>6</b>	3	2	1	1	1	1	7	5	4	3

**Instructions**

- Fill in appropriate catalog listing - one listing/sheet.
- Check proper figure #, Type size, type color.
- Fill in quantity required.
- Indicate legends desired — Do not exceed maximums shown in legend order guide.

**Note**

- For Proper Legend Orientation, AML housings (when viewed from front of panel) should have "MICRO SWITCH" logo oriented "UP" on square devices and "UP" or to the "LEFT" on rectangular devices.
- Please use black ink in filling out this form to help us process your order.

**Standard Legend Placement**

- Transmitted Color — Legend on outer shell (Button)
- Figures 3 and 4 not applicable for AML57 listings

Modified Gothic lettering (A thru Z), numerals (0 thru 9) and Symbols below available in 5/64, 7/64, 9/64, 13/64 and 5/16.													
·	,	:	;	!	?	'	—	"	/	(	)	*	&
\$	¢	#	%	o	+	-	±	÷	x	=	≠	>	<
→	↑	↓	↙	↘	↖	↗	↕	↔	↔	↔	↔	↔	↔

**SPECIAL LEGENDS**

NOTE: Use this area to show special Legend Locations or Configurations NOT shown above. NON-STANDARD legends will involve additional charges and increased delivery time.

Fig. "A"	Fig. "B"
----------	----------

### LEGEND ORDER CHART

Customer Part NO	Fig NO	Type Size			Ink Color	Button Qty	Legend Description							
		5/64	7/64	9/64			13/64	5/16	Sequence: 1st Line	2nd Line	3rd Line			

Sheet Prepared By: \_\_\_\_\_ (Signature) \_\_\_\_\_ (Date)

FO-63604-D

## Manual Switches Pushbutton Legend Sheet

### AML Pushbutton Legend Sheet/Product Specification

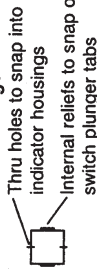
Page \_\_\_\_\_ of \_\_\_\_\_

Account NO 126 - 284

#### LEGEND ORDER GUIDE

Button: Type Orientation	Figure NO	Max Lines/Area			Max Characters/Line		
		5/64	7/64	9/64	13/64	5/16	5/16
1 A*B PR AREA	1	4*3	3*2	2*1	5*4	5*3	3*1
1 C AREA	2	4*3	3*2	2*1	5*4	5*3	3*1
1 D AREA	3	1*1	1*1	0*0	7*5	5*4	3*2
1 E,H* AREA	4	4*3	3*2	2*1	11*10	9*8	5*3
1 E,H* AREA	5	6*6	4*4	3*3	7*5	5*4	3*1
1 F AREA	6	4*3	3*2	2*1	11*10	9*8	5*3
1 F AREA	7	6*6	4*4	3*3	7*5	5*4	3*1
1 G,N AREA	8	1*1	1*1	0*0	11*10	9*8	5*3
1 M AREA	9	5*0	4*0	3*0	8*0	6*0	3*0

#### Definitions of Markings



#### Standard Legend Placement -

- Use special legends sec. for other placements
- Transmitted Color - Legend on outer shell (Button)
  - Dead Front - Legend on Insert
  - Projected Color - Legend on outer shell (Button)
  - Transmitted color with clear cap legend on insert

#### LEGEND ORDER CHART

Customer Part No	Fig No	Type Size		Ink Color		But- ton Qty
		5/64	7/64	9/64	13/64	
				Black	White	1
						2
						1
						2
						1
						2
						1
						2

Catalog Listing  
**AML51** -  
Customer P.O. No. \_\_\_\_\_ Customer Dwg. No. \_\_\_\_\_

MICRO SWITCH Sales Order \_\_\_\_\_ Line Number \_\_\_\_\_ Schedule No. \_\_\_\_\_

Customer: \_\_\_\_\_

Address: \_\_\_\_\_ (city) \_\_\_\_\_ (state) \_\_\_\_\_

#### Instructions

- Fill in appropriate catalog listing - one listing/sheet.
- Check proper figure #, Type size, Type color.
- Fill in quantity required.
- Indicate legends desired - Do not exceed maximums shown in legend order guide.

#### Note

- For Proper Legend Orientation, AML housings (when viewed from front of panel) should have "MICRO SWITCH" logo oriented "UP" on square devices and "UP" or to the "LEFT" on rectangular devices.
- Please use black ink in filling out this form to help us process your order.
- \* INSERT ONLY ON STYLE A & H BUTTON

Modified Gothic lettering (A thru Z), numerals (0 thru 9) and Symbols below available in 5/64, 7/64, 9/64, 13/64 and 5/16.

**A3** Modified Gothic

STANDARD SYMBOLS AVAILABLE												
.	:	;	!	?	'	-	"	/	(	)	*	&
\$	¢	#	%	o	+	-	±	÷	x	=	≠	>
→	↔	↓	↙	↘	↖	↗	↕	↔	↔	↔	↔	↔

**SPECIAL LEGENDS**

NOTE: Use this area to show special Legend Locations or Configurations NOT shown to the left. NON-STANDARD legends will involve additional charges and increased delivery time.

Fig. "A" \_\_\_\_\_ Fig. "B" \_\_\_\_\_

Sheet prepared by: \_\_\_\_\_

(Signature) \_\_\_\_\_

(Date) \_\_\_\_\_

Manuals

Honeywell

AML Lens Legend Sheet/Product Specification

Account No \_\_\_\_\_ Page \_\_\_\_\_ of \_\_\_\_\_

Catalog Listing  
**AML51** —  
Customer P.O. No. \_\_\_\_\_ Customer Dwg. No. \_\_\_\_\_  
MICRO SWITCH Sales Order \_\_\_\_\_ Line Number \_\_\_\_\_ Schedule No. \_\_\_\_\_  
Customer: \_\_\_\_\_  
Address: \_\_\_\_\_ (city) \_\_\_\_\_ (state) \_\_\_\_\_

LEGEND ORDER GUIDE

Button: Type Orientation	Figure No	Max Lines			Max Characters							
		5/64	7/64	9/64	13/64	5/16	5/16					
AREA 1 J	1	4	3	3	2	2	1	14	11	10	7	3
AREA 1 K	2	4	3	3	2	2	1	6	5	5	3	1
AREA 1 2 3 L	3	4	3	3	2	2	1	4	3	3	2	1
AREA 1 J	4	4	3	3	3	3	2	9	7	6	4	2
AREA 1 2 K	5	3	2	2	2	1	1	8	7	6	4	2
AREA 1 2 3 L	6	2	2	1	1	1	0	8	7	6	4	0

Instructions

- Fill in appropriate catalog listing - one listing/sheet.
- Check proper figure #, type size, type color.
- Fill in quantity required.
- Indicate legends desired — Do not exceed maximums shown in legend order guide.

Note

- For Proper Legend Orientation, AML housings (when viewed from front of panel) should have "MICRO SWITCH" logo oriented "UP" on square devices and "UP" or to the "LEFT" on rectangular devices.
- Please use black ink in filling out this form to help us process your order.

Standard Legend Placement

- Transmitted Color — Legend on outer shell (Button)
- Dead Front - Legend on Insert
- Projected Color - Legend on outer shell (Button)

LEGEND ORDER CHART

Customer Part No	Fig No	Type Size	Ink Color	Legend Description	Sequence: Left-to-Right or Top-to-Bottom		
					1st Line	2nd Line	3rd Line
	1						
	2						
	3						
	1						
	2						
	3						
	1						
	2						
	3						

Modified Gothic lettering (A thru Z), numerals (0 thru 9) and Symbols below available in 5/64, 7/64, 9/64, 13/64 and 5/16.

.	,	:	;	!	?	'	"	-	/	(	)	*	&
\$	¢	#	%	o	+	-	±	+	x	=	≠	>	<
→	↑	↓	←	CR	1/4	1/2	3/4	1/3	2/3	@	∞		

**A3** Modified Gothic

SPECIAL LEGENDS

NOTE: Use this area to show special Legend Locations or Configurations NOT shown above. NON-STANDARD legends will involve additional charges and increased delivery time.

Fig. "A" \_\_\_\_\_ Fig. "B" \_\_\_\_\_

Sheet Prepared By: \_\_\_\_\_ (Signature) \_\_\_\_\_ (Name)

FO-63395-E

Компания «Океан Электроники» предлагает заключение долгосрочных отношений при поставках импортных электронных компонентов на взаимовыгодных условиях!

Наши преимущества:

- Поставка оригинальных импортных электронных компонентов напрямую с производств Америки, Европы и Азии, а так же с крупнейших складов мира;
- Широкая линейка поставок активных и пассивных импортных электронных компонентов (более 30 млн. наименований);
- Поставка сложных, дефицитных, либо снятых с производства позиций;
- Оперативные сроки поставки под заказ (от 5 рабочих дней);
- Экспресс доставка в любую точку России;
- Помощь Конструкторского Отдела и консультации квалифицированных инженеров;
- Техническая поддержка проекта, помощь в подборе аналогов, поставка прототипов;
- Поставка электронных компонентов под контролем ВП;
- Система менеджмента качества сертифицирована по Международному стандарту ISO 9001;
- При необходимости вся продукция военного и аэрокосмического назначения проходит испытания и сертификацию в лаборатории (по согласованию с заказчиком);
- Поставка специализированных компонентов военного и аэрокосмического уровня качества (Xilinx, Altera, Analog Devices, Intersil, Interpoint, Microsemi, Actel, Aeroflex, Peregrine, VPT, Syfer, Eurofarad, Texas Instruments, MS Kennedy, Miteq, Cobham, E2V, MA-COM, Hittite, Mini-Circuits, General Dynamics и др.);

Компания «Океан Электроники» является официальным дистрибьютором и эксклюзивным представителем в России одного из крупнейших производителей разъемов военного и аэрокосмического назначения «JONHON», а так же официальным дистрибьютором и эксклюзивным представителем в России производителя высокотехнологичных и надежных решений для передачи СВЧ сигналов «FORSTAR».



## JONHON

«JONHON» (основан в 1970 г.)

Разъемы специального, военного и аэрокосмического назначения:

(Применяются в военной, авиационной, аэрокосмической, морской, железнодорожной, горно- и нефтедобывающей отраслях промышленности)

«FORSTAR» (основан в 1998 г.)

ВЧ соединители, коаксиальные кабели, кабельные сборки и микроволновые компоненты:

(Применяются в телекоммуникациях гражданского и специального назначения, в средствах связи, РЛС, а так же военной, авиационной и аэрокосмической отраслях промышленности).



Телефон: 8 (812) 309-75-97 (многоканальный)

Факс: 8 (812) 320-03-32

Электронная почта: [ocean@oceanchips.ru](mailto:ocean@oceanchips.ru)

Web: <http://oceanchips.ru/>

Адрес: 198099, г. Санкт-Петербург, ул. Калинина, д. 2, корп. 4, лит. А