

KUEP Series Panel Plug-in Relay

- 1 Form X, 2 Form A and 2 Form C contact arrangements
- 10 amp current rating
- Magnetic blow-out
- Various mounting options
- Indicator lamp available



Typical applications
DC load switching in industrial controls

Approvals

UL E22575; CSA LR15734; CE (KUEP-11 only)
Technical data of approved types on request

Contact Data

| | | |
|-------------------------------|--|---------------|
| Contact arrangement | 1 form X (NO-DM), 2 form A (NO), 2 form C (CO) | |
| Rated voltage | 150VDC | |
| Rated current | 10A | |
| Contact material | AgCdO | AgSnOInO |
| Min. recommended contact load | 300mA, 12VDC | |
| Frequency of operation | 360 ops./hour | 360 ops./hour |
| Operate/releases time max. | 15/10ms | |
| Bounce time max. | 17ms | |

Contact ratings

| Type | Load | Cycles |
|--------------------------|---------------------------|-------------------------|
| UL 508 | | |
| KUEP, 1 form X, AgCdO | 10A, 150VDC | 100x10 ³ |
| | 1A, 300VDC | 100x10 ³ |
| | 2.5 A, 170 VDC, resistive | 100x10 ³ |
| | KUEP, 2 form A, AgCdO | |
| KUEP, 2 form A, AgCdO | 5 A, 150 VDC | |
| | 2.5 A, 170 VDC, resistive | 100x10 ³ |
| KUEP, 2 form C, AgCdO | 3 A, 150 VDC | |
| | 2.5 A, 170 VDC, resistive | 100x10 ³ |
| | 10 A, 240 VAC | |
| | 10 A, 32 VDC | |
| | 5 FLA, 15 LRA, 250 VAC | |
| | 1/3 HP, 120 VAC | |
| | 5 A, 120 VAC, tungsten | |
| | 1/2 HP, 250 VAC | |
| | 10 FLA, 40 LRA, 125 VAC | |
| | 3 A, 600 VAC | |
| | 1/2 HP, 480 VAC | |
| 1/2 HP, 600 VAC | | |
| 1 HP, 480 VAC, 3 phase | | |
| KUEP, 1 form X, AgSnOInO | 10A, 150VDC, resistive | 30x10 ³ |
| | KUEP, 2 form A, AgSnOInO | |
| KUEP, 2 form A, AgSnOInO | 5 A, 150 VDC, resistive | 100x10 ³ |
| | KUEP, 2 form C, AgSnOInO | |
| KUEP, 2 form C, AgSnOInO | 3 A, 150 VDC, resistive | 100x10 ³ |
| | Mechanical endurance | 10x10 ⁶ ops. |

Coil Data

| | |
|-------------------------------------|----------------------------|
| Coil voltage range | 5 to 125VDC 6 to 240VAC |
| Coil insulation system according UL | Class B |

Coil versions, DC coil

| Coil code | Rated voltage VDC | Operate voltage VDC | Coil resistance Ω±10% | Rated coil power W |
|--------------------------|-------------------|---------------------|-----------------------|--------------------|
| One pole versions | | | | |
| 5 | 5 | 3.75 | 21 | 1.2 |
| 6 | 6 | 4.5 | 32 | 1.125 |
| 12 | 12 | 9.0 | 120 | 1.2 |
| 24 | 24 | 18.0 | 472 | 1.25 |
| 48 | 48 | 36.0 | 1800 | 1.3 |
| 110 | 110 | 82.5 | 10000 | 1.25 |
| 125 | 125 | 93.75 | 13000 | 1.2 |
| Two pole versions | | | | |
| 5 | 5 | 3.75 | 14 | 1.8 |
| 6 | 6 | 4.5 | 20 | 1.8 |
| 12 | 12 | 9.0 | 80 | 1.8 |
| 24 | 24 | 18.0 | 320 | 1.8 |
| 48 | 48 | 36.0 | 1250 | 1.85 |
| 110 | 110 | 82.5 | 6720 | 1.8 |
| 125 | 125 | 93.75 | 8680 | 1.8 |

All figures are given for coil without preenergization, at ambient temperature +23°C.

Coil versions, AC coil

| Coil code | Rated voltage VAC | Operate voltage VAC | Coil resistance Ω±15% | Rated coil power VA |
|--------------------------|-------------------|---------------------|-----------------------|---------------------|
| One pole versions | | | | |
| 6 | 6 | 5.1 | 6 | 2.0 |
| 12 | 12 | 10.2 | 24 | 2.0 |
| 24 | 24 | 20.4 | 85 | 2.0 |
| 120 | 120 | 102.0 | 2250 | 2.1 |
| 240 | 240 | 204.0 | 9110 | 2.1 |
| Two pole versions | | | | |
| 6 | 6 | 5.1 | 4.2 | 2.8 |
| 12 | 12 | 10.2 | 18 | 2.8 |
| 24 | 24 | 20.4 | 72 | 2.8 |
| 120 | 120 | 102.0 | 1700 | 2.9 |
| 240 | 240 | 204.0 | 7200 | 2.9 |

All figures are given for coil without preenergization, at ambient temperature +23°C.

Insulation Data

| | |
|-------------------------------|----------------------|
| Initial dielectric strength | |
| between open contacts | 1200V _{rms} |
| between contact and coil | 2200V _{rms} |
| between adjacent contacts | 2200V _{rms} |
| Initial insulation resistance | |
| between insulated elements | 100MΩ |

KUEP Series Panel Plug-in Relay (Continued)

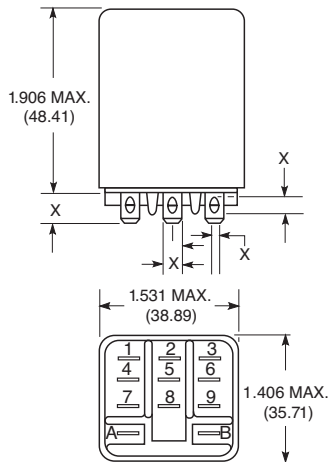
Other Data

Material compliance: EU RoHS/ELV, China RoHS, REACH, Halogen content refer to the Product Compliance Support Center at www.te.com/customersupport/rohssupportcenter

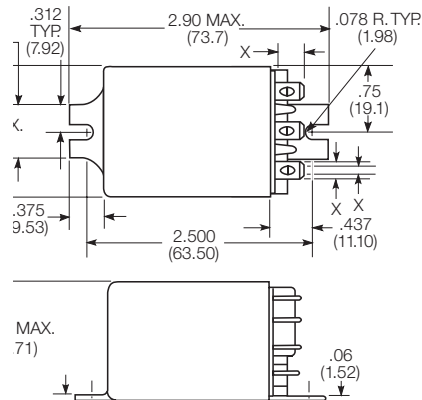
| | |
|--------------------------------------|--|
| Ambient temperature | |
| DC coil | -45°C to 70°C |
| AC coil | 1 pole: -45°C to 55°C 2 pole: -45°C to 45°C |
| Category of environmental protection | |
| IEC 61810 | RT1 - dust protected |
| Vibration resistance (functional) | .065" double amplitude, 10-55Hz |
| Shock resistance (functional) | 15g, 11ms (non-operating) |
| Terminal type | |
| | Quick connects (QC), .187 or .205 PCB-THT |
| Terminal retention, push force | |
| QC .205 | 17 lbs for 3s |
| QC .187 | 25 lbs for 3s |

Dimensions

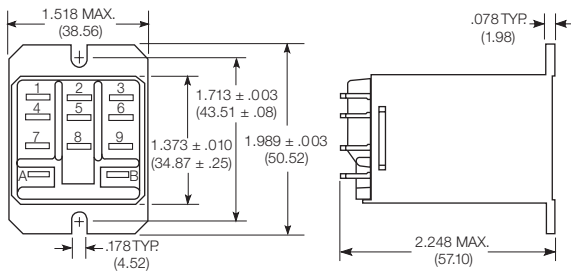
Plain case



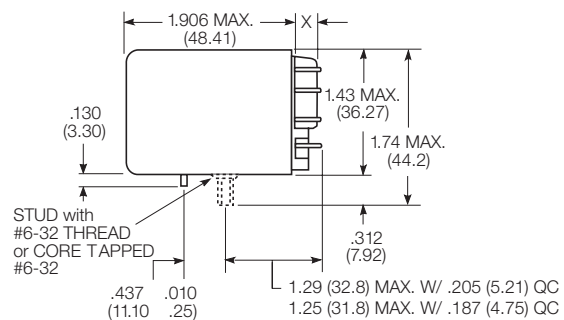
Bracket mount case



Top flange case



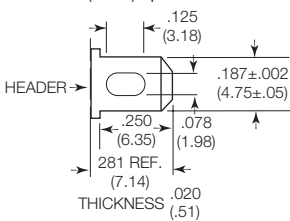
Core / stud mount case



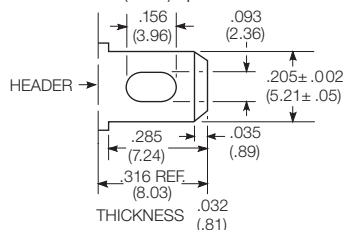
X Is For Terminal Dimensions. See Terminal Drawings.

Terminal dimensions

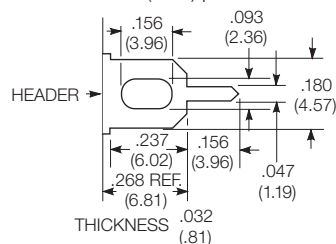
4.75mm (.187) quick connect



5.21mm (.205) quick connect



1.19mm (.047) printed circuit

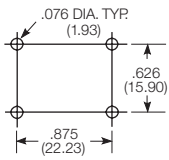


KUEP Series Panel Plug-in Relay (Continued)

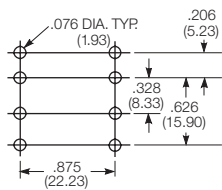
PCB layout

Bottom view on solder pins

1 form X version



2 form C version shown
(Omit unnecessary holes for form A types)

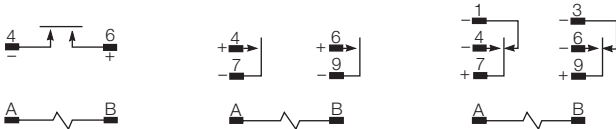


Terminal assignment

1 Form X

2 Form A

2 Form C



Load polarity noted above is recommended for optimum arc suppression.

Product code structure

Typical product code **KUEP -3 A 1 5 -120**

| | | | | | |
|--|--|---|-----------------|--|--|
| Type KUEP Enclosed relay with magnetic blow-outs | | | | | |
| Contact arrangement and rating 3 1 form X (1 NO-DM) 11 2 form C (2 CO) | | 7 | 2 form A (2 NO) | | |
| Coil Input A AC, 50/60Hz D DC | | | | | |
| Mounting and options 1 Socket mount (plain) case 5 Bracket mount case E Plain case with #6-32 tapped core and locating tab 1) Indicator lamps are available on models with the following coils: 6-24VAC and VDC, 110VDC and 120-240VAC. Only models with 120-240VAC coils are UL recognized. | | | | 3 Socket mount (plain) case, with indicator lamp ¹⁾ A Plain case with #6-32 stud and locating tab T Top flange case | |
| Terminal and contact material 5 4.75mm (.187in) quick connect/solder; AgCdO 7 1.19mm (.047in) PCB, AgCdO R 5.21mm (.205in) quick connect/solder; AgSnInO | | | | 6 5.21mm (.205in) quick connect/solder; AgCdO P 4.75mm (.187in) quick connect/solder; AgSnInO S 1.19mm (.047in) PCB, AgSnInO | |
| Coil voltage Coil code: please refer to coil versions table | | | | | |

| Product Code | Arrangement | Material | Coil | Terminals | Mounting | Part Number |
|----------------|-------------------|----------|---------|--------------------|--|-------------|
| KUEP-3A15-120 | 1 Form X, 1 NO-DM | AgCdO | 120 VAC | 4.75mm (.187in) QC | Socket mount, plain case | 9-1393113-4 |
| KUEP-3D15-12 | | | 12 VDC | | | 9-1393113-8 |
| KUEP-3D15-24 | | | 24 VDC | | | 1393114-1 |
| KUEP-3D15-48 | | | 48 VDC | | | 1393114-2 |
| KUEP-3D15-110 | | | 110 VDC | | | 9-1393113-7 |
| KUEP-3D35-24 | | | 24 VDC | | Socket mount, plain case w/ indicator lamp | 1393114-5 |
| KUEP-7D15-24 | 2 Form A, 2 NO | | | | Socket mount, plain case | 1-1393114-1 |
| KUEP-11A15-120 | 2 Form C, 2 CO | | 120 VAC | | | 8-1393113-3 |
| KUEP-11D15-12 | | | 12 VDC | | | 8-1393113-6 |
| KUEP-11D15-24 | | | 24 VDC | | | 8-1393113-7 |
| KUEP-11D15-48 | | | 48 VDC | | | 8-1393113-8 |
| KUEP-11D15-110 | | | 110 VDC | | | 8-1393113-5 |

Компания «Океан Электроники» предлагает заключение долгосрочных отношений при поставках импортных электронных компонентов на взаимовыгодных условиях!

Наши преимущества:

- Поставка оригинальных импортных электронных компонентов напрямую с производств Америки, Европы и Азии, а так же с крупнейших складов мира;
- Широкая линейка поставок активных и пассивных импортных электронных компонентов (более 30 млн. наименований);
- Поставка сложных, дефицитных, либо снятых с производства позиций;
- Оперативные сроки поставки под заказ (от 5 рабочих дней);
- Экспресс доставка в любую точку России;
- Помощь Конструкторского Отдела и консультации квалифицированных инженеров;
- Техническая поддержка проекта, помощь в подборе аналогов, поставка прототипов;
- Поставка электронных компонентов под контролем ВП;
- Система менеджмента качества сертифицирована по Международному стандарту ISO 9001;
- При необходимости вся продукция военного и аэрокосмического назначения проходит испытания и сертификацию в лаборатории (по согласованию с заказчиком);
- Поставка специализированных компонентов военного и аэрокосмического уровня качества (Xilinx, Altera, Analog Devices, Intersil, Interpoint, Microsemi, Actel, Aeroflex, Peregrine, VPT, Syfer, Eurofarad, Texas Instruments, MS Kennedy, Miteq, Cobham, E2V, MA-COM, Hittite, Mini-Circuits, General Dynamics и др.);

Компания «Океан Электроники» является официальным дистрибьютором и эксклюзивным представителем в России одного из крупнейших производителей разъемов военного и аэрокосмического назначения «JONHON», а так же официальным дистрибьютором и эксклюзивным представителем в России производителя высокотехнологичных и надежных решений для передачи СВЧ сигналов «FORSTAR».



JONHON

«JONHON» (основан в 1970 г.)

Разъемы специального, военного и аэрокосмического назначения:

(Применяются в военной, авиационной, аэрокосмической, морской, железнодорожной, горно- и нефтедобывающей отраслях промышленности)

«FORSTAR» (основан в 1998 г.)

ВЧ соединители, коаксиальные кабели, кабельные сборки и микроволновые компоненты:

(Применяются в телекоммуникациях гражданского и специального назначения, в средствах связи, РЛС, а так же военной, авиационной и аэрокосмической отраслях промышленности).



Телефон: 8 (812) 309-75-97 (многоканальный)

Факс: 8 (812) 320-03-32

Электронная почта: ocean@oceanchips.ru

Web: <http://oceanchips.ru/>

Адрес: 198099, г. Санкт-Петербург, ул. Калинина, д. 2, корп. 4, лит. А