

MAXM17543 3.3V Output Evaluation Kit

Evaluates: MAXM17543 in 3.3V Output-Voltage Application

General Description

The MAXM17543 evaluation kit (EV kit) is a demonstration circuit of MAXM17543 high-voltage, high-efficiency, current-mode scheme, synchronous step-down DC-DC switching power module. The EV kit is designed for a 3.3V output and delivers up to 2.5A load current from a wide input-voltage range of 4.5V to 42V. The EV kit switches at an optimal 500kHz switching frequency to allow the use of small component-sizes, helping to minimize solution-size while maintaining high-performance. The EV kit provides a precision-enable input, an open-drain $\overline{\text{RESET}}$ output signal, and external frequency synchronization to provide a simple and reliable startup sequence and eliminate beat frequency between regulators. The EV kit also includes optional component footprints to program different output voltages, an adjustable input undervoltage-lockout, and a soft-start time to control inrush current during startup. The MAXM17543 IC data sheet provides a complete description of the part and should be read in conjunction with this data sheet prior to modifying the demonstration circuit.

Features

- Highly Integrated Solution with Integrated Shield Inductor
- Wide 4.5V to 42V Input Range
- Preset 3.3V Output with a Fixed Resistor-Divider on FB (Feedback Pin)
- Programmable Output-Voltage Feature (0.9V to 12V)
- Up to 2.5A Output Current
- High 91.2% Efficiency ($V_{\text{IN}} = 12\text{V}$, $V_{\text{OUT}} = 3.3\text{V}$ at 0.74A)
- 500kHz Switching Frequency
- Enable/UVLO Input, Resistor-Programmable UVLO Threshold
- Adjustable Soft-Start Time
- Selectable PWM, PFM, or DCM Mode
- Open-Drain $\overline{\text{RESET}}$ Output
- External Frequency Synchronization
- Overcurrent and Overtemperature Protection
- Low-Profile, Surface-Mount Components
- Lead(Pb)-Free and RoHS Compliant
- Fully Assembled and Tested

Ordering Information appears at end of data sheet.

MAXM17543 3.3V Output Evaluation Kit

Evaluates: MAXM17543 in 3.3V Output-Voltage Application

Quick Start

Recommended Equipment

- MAXM17543 EV kit
- 4.5V to 42V DC power supply (V_{IN})
- Dummy load capable of sinking 2.5A
- Digital voltmeter (DVM)
- 100MHz dual-trace oscilloscope

Procedure

The EV kit is fully assembled and tested. Follow the steps below to verify board operation. **Caution: Do not turn on the power supply until all connections are completed.**

- 1) Set the power supply at a voltage between 4.5V and 42V. Disable the power supply.
- 2) Connect the positive and negative terminals of the power supply to IN and PGND PCB pads, respectively.
- 3) Connect the positive and negative terminals of the 2.5A load to OUT and PGND2 PCB pads, respectively, and set the load to 0A.
- 4) Connect the DVM across the OUT PCB pad and the PGND2 PCB pad.
- 5) Verify that no shunts are installed across pin 1-2 on jumper JU1 to enable UVLO (see [Table 1](#) for details).
- 6) Verify that a shunt is installed across JU3 to disable the external synchronization (see [Table 3](#) for details).
- 7) Verify that a shunt is installed across JU2 to enable PWM mode (see [Table 2](#) for details).
- 8) Enable the input power supply.
- 9) Verify the DVM displays 3.3V.
- 10) Increase the load up to 2.5A to verify the DVM continues displaying 3.3V.

Detailed Description of Hardware

The EV kit is a proven circuit to demonstrate the high-voltage, high-efficiency, and compact solution-size of the synchronous step-down DC-DC power module. The output voltage is preset for 3.3V to operate from 4.5V to 42V and provides up to 2.5A load current. The optimal frequency is set at 500kHz to maximize efficiency and minimize component size. The EV kit includes JU1 to enable/disable UVLO of the device, JU2 to configure in PWM, PFM, or DCM mode to improve light-load efficiency, and JU3 to enable/disable external clock synchronization (SYNC). The $\overline{\text{RESET}}$ PCB pad is also available for monitoring output-voltage regulation to enable/disable the application circuit of the load. The

electrolytic capacitor (C8) is required only when the V_{IN} power supply is situated far from the MAXM17543 circuit. When R4 is open, the device switches at 500kHz switching frequency. On the bottom layer, additional footprints of optional components are included to allow for easy board modification for different input/output configurations.

Soft-Start Input (SS)

The device utilizes an adjustable soft-start function to limit inrush current during startup. The soft-start time is programmed by the value of the external capacitor from SS to GND (C1). The selected output capacitance (C_{SEL}) and the output voltage (V_{OUT}) determine the minimum value of C1, as shown by the following equation:

$$C1 \geq 28 \times 10^{-3} \times C_{SEL} \times V_{OUT}$$

where C1 is in nF and C_{SEL} is in μF

The soft-start time (t_{SS}) is calculated by the equation below:

$$t_{SS} = C1 / 5.55$$

where t_{SS} is in ms and C1 is in nF.

Programmable Undervoltage-Lockout (UVLO)

The EV kit offers an adjustable-input, undervoltage-lockout level by resistor-dividers connected between the IN, EN/UVLO, and GND pins. For normal operation, a shunt should not be installed across pins 1-2 on JU1 to enable the output through an internal pullup 3.3M Ω resistor from the EN/UVLO pin to the IN pin. To disable the output, install the shunt across pins 1-2 on JU1 to pull EN/UVLO pin to GND. See [Table 1](#) for JU1 jumper setting details. The EV kit also provides an optional R3 PCB footprint to program a UVLO threshold voltage at which an input-voltage level device turns on. The R3 resistor can be calculated by the following equation:

$$R3 = \frac{4009.5}{(V_{INU} - 1.215)}$$

where V_{INU} is the input voltage at which the device is required to turn on, and R3 unit is in k Ω .

Mode Selection (MODE)

The device's MODE pin can be used to select among the PWM, PFM, or DCM modes of operation in advance of constant frequency or high efficiency at light load. The logic state of the MODE pin is latched when the V_{CC} and EN/UVLO voltage exceed the respective UVLO rising thresholds and all internal voltages are ready to allow LX switching. The changes on the MODE pin are ignored during normal operation. Refer to the MAXM17543 IC data sheet for more information on the PWM, PFM, and DCM modes of operation. [Table 2](#) shows EV kit jumper settings that can be used to configure the desired mode of operation.

External Clock Synchronization (SYNC)

The internal oscillator of the device can be synchronized to an external clock signal to eliminate beat frequency between regulators through the SYNC pin. The external synchronization clock frequency must be between 1.1f_{SW} to 1.4f_{SW}, where f_{SW} is the frequency of operation set by R5. The minimum external clock high pulse width and amplitude should be greater than 50ns and 2.1V, respectively. The minimum external clock low pulse width should be greater than 160ns, and the maximum external clock low pulse amplitude should be less than 0.8V. [Table 3](#) describes the connection of the SYNC pin.

Table 1. UVLO Enable/Disable Configuration (JU1)

SHUNT POSITION	EN PIN	MAXM17543_OUTPUT
Installed	Connected to GND	Disable
Not installed*	Connected to VIN	Enable

Default position.

Setting V_{OUT} with a Resistive Voltage-Divider at FB

The EV kit is preset for 3.3V and offers an adjustable output voltage range as low as 0.9V up to 12V at 2.5A maximum load. The adjustable output voltage can be programmed by the set of resistor dividers R1 and R2. Refer to the [Table 1](#) (Selection Component Values) on the MAXM17543 datasheet to select optimal component values for each specific input voltage range from 4.5V up to 42V and an output voltage from 0.9V up to 12V. To obtain a different output voltage other than default setting outputs in [Table 1](#), only six component (R1, R2, C1, C2, C3, and C8) values are needed to modify the equation that described in the *Setting the Output Voltage* section in the MAXM17543 IC data sheet.

Table 2. MODE Description (JU2)

SHUNT POSITION	MODE PIN	MAXM17543_MODE
Not installed	Unconnected	PFM mode of operation
1-2	Connected to V _{CC}	DCM mode of operation
2-3*	Connected to GND	PWM mode of operation

Default position.

Table 3. SYNC Description (JU3)

SHUNT POSITION	SYNC PIN	MAXM17543_SYNC
1-2*	Connected to SGND	SYNC feature unused
Not installed	Connected to test loop on PCB	Frequency can be synchronized with an external clock

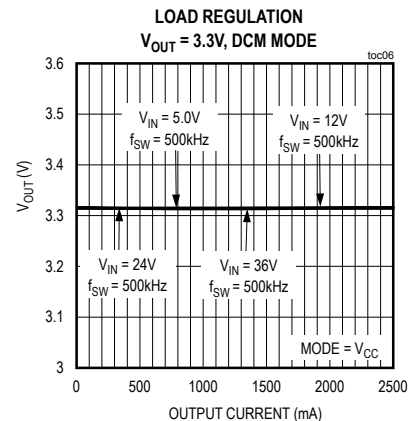
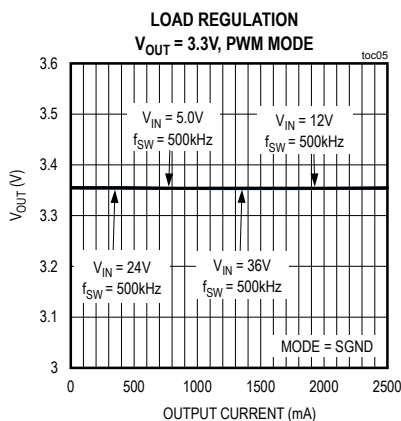
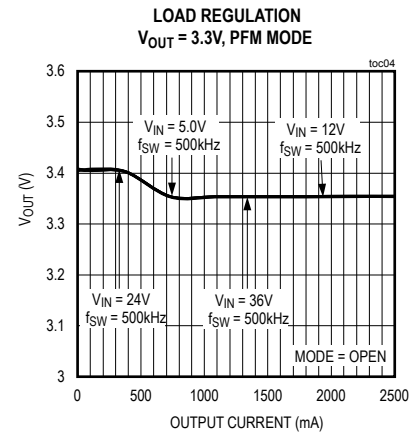
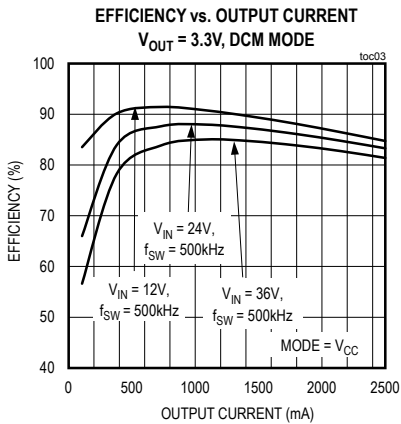
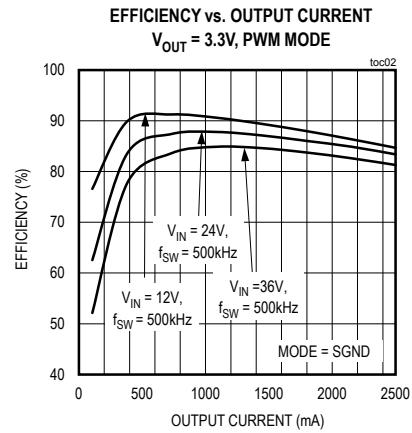
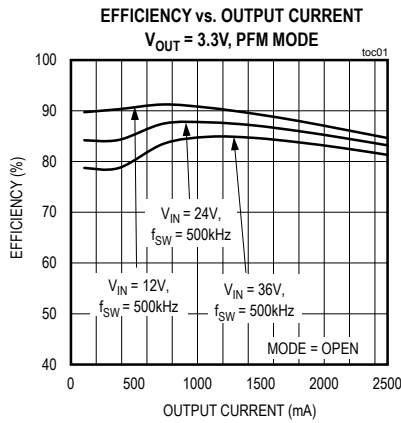
Default position.

MAXM17543 3.3V Output Evaluation Kit

Evaluates: MAXM17543 in 3.3V Output-Voltage Application

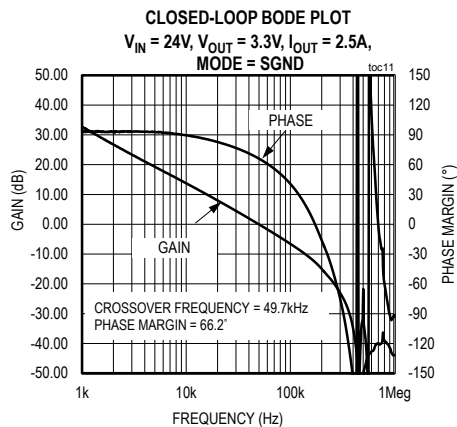
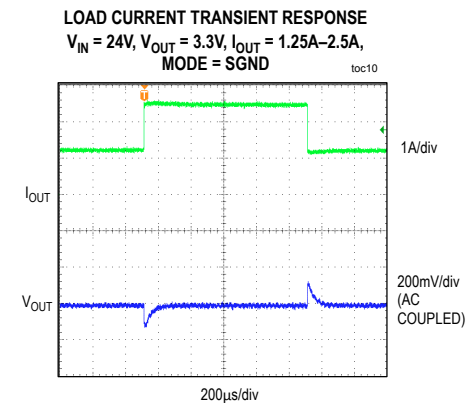
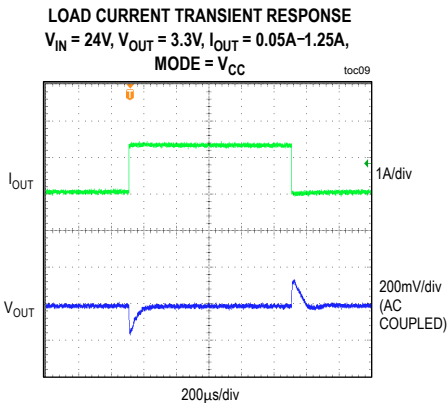
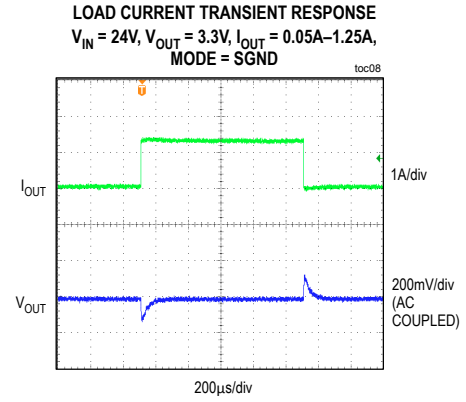
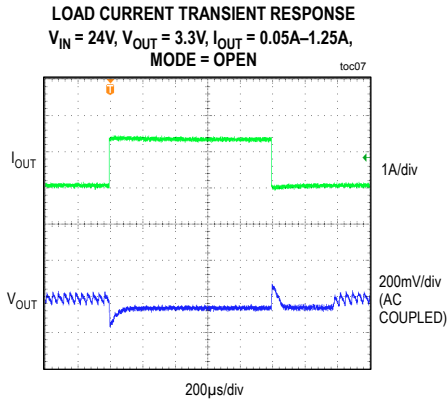
Typical Operating Characteristics

($V_{IN} = 4.5V - 42V$, $V_{OUT} = 3.3V$, $I_{OUT} = 0 - 2.5A$, $T_A = +25^\circ C$, unless otherwise noted.)



Typical Operating Characteristics (continued)

($V_{IN} = 4.5V - 42V$, $V_{OUT} = 3.3V$, $I_{OUT} = 0 - 2.5A$, $T_A = +25^\circ C$, unless otherwise noted.)



Component Suppliers

SUPPLIER	WEBSITE
Murata Americas	www.murata.com
NEC TOKIN America, Inc.	www.nec-tokinamerica.com
Panasonic Corp.	www.panasonic.com
SANYO Electric Co., Ltd.	www.sanyodevice.com
TDK Corp.	www.component.tdk.com
TOKO America, Inc.	www.tokoam.com

Note: Indicate that you are using the MAXM17543 when contacting these component suppliers.

Component List and Schematic

Refer to the following files attached to this data sheet for component information and schematic diagram:

- MAXM17543EV_BOM.xls
- MAXM17543EV_Schematic.pdf

MAXM17543 3.3V Output Evaluation Kit

Evaluates: MAXM17543 in 3.3V Output-Voltage Application

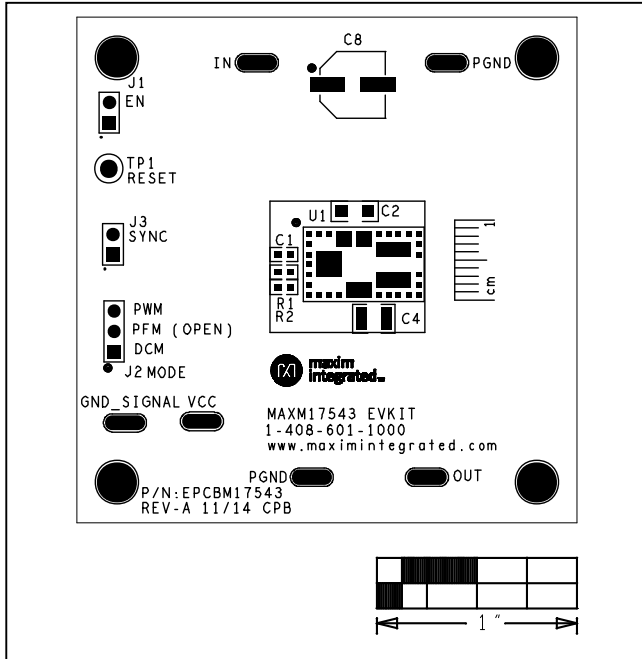


Figure 1. MAXM17543 EV Kit Component Placement Guide—Component-Side

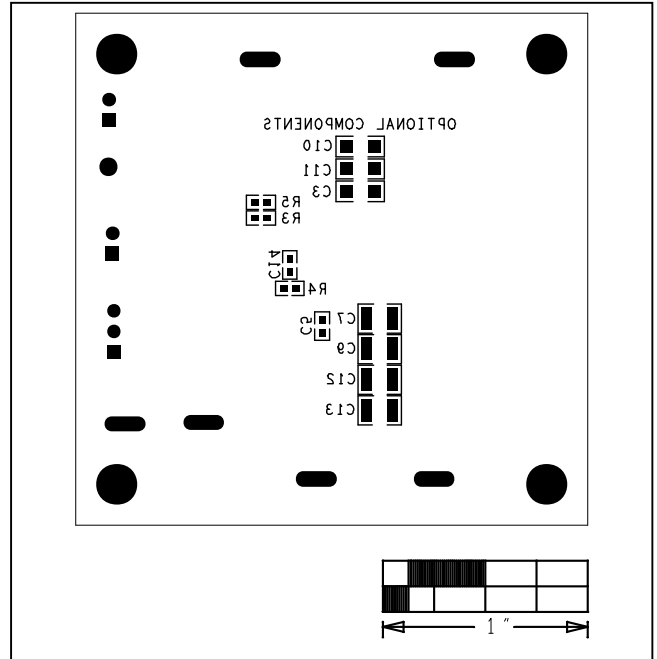


Figure 2. MAXM17543 EV Kit Component Placement Guide—Solder-Side

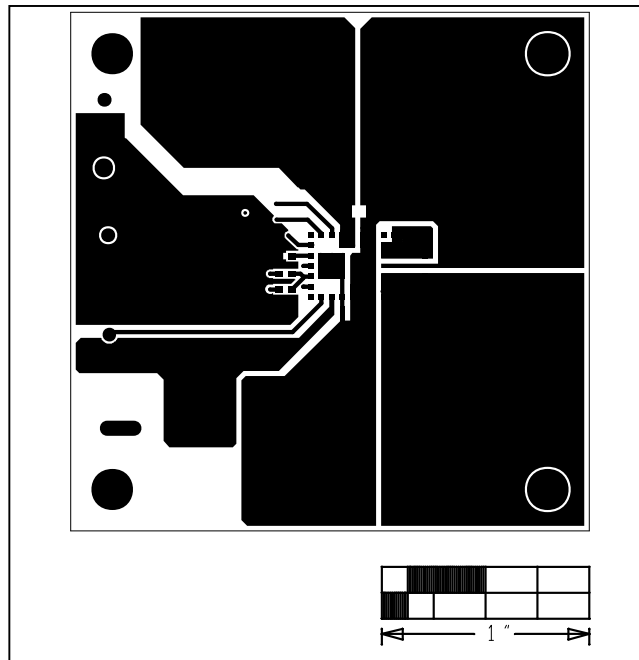


Figure 3. MAXM17543 EV Kit PCB Layout—Component-Side

MAXM17543 3.3V Output
Evaluation Kit

Evaluates: MAXM17543 in 3.3V
Output-Voltage Application

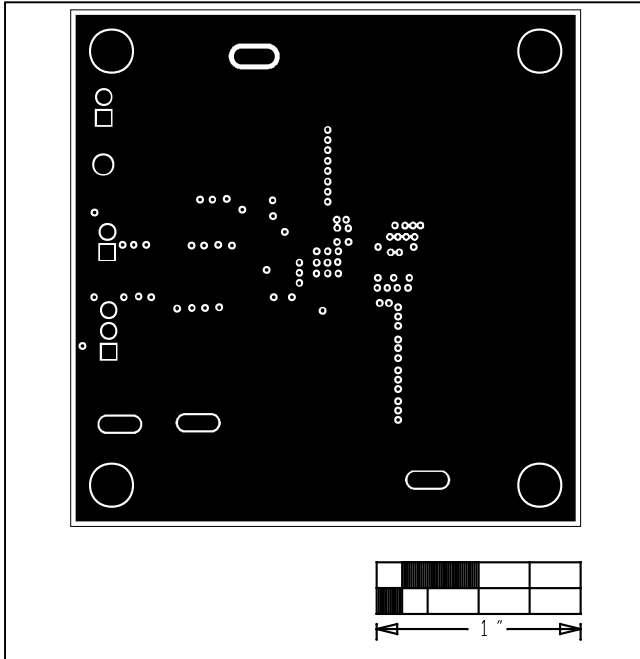


Figure 4. MAXM17543 EV Kit PCB Layout—PGND Layer 2

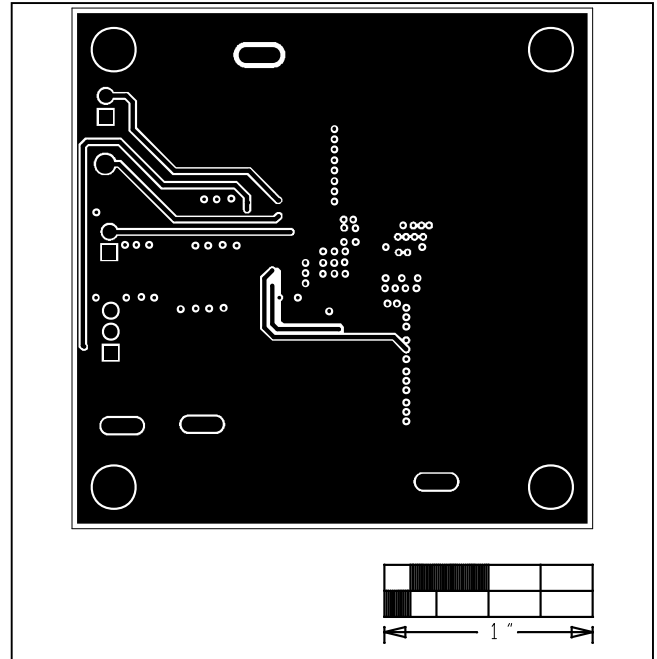


Figure 5. MAXM17543 EV Kit PCB Layout—PGND Layer 3

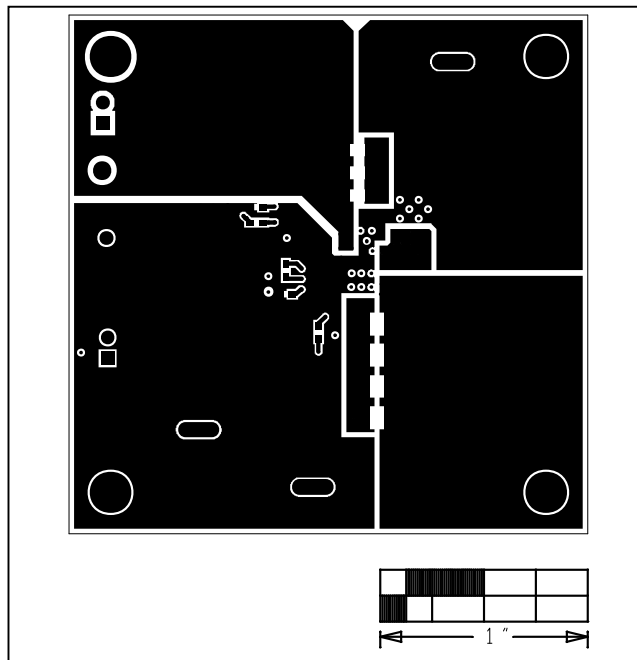


Figure 6. MAXM17543 EV Kit PCB Layout—Solder-Side

MAXM17543 3.3V Output
Evaluation Kit

Evaluates: MAXM17543 in 3.3V
Output-Voltage Application

Ordering Information

PART	TYPE
MAXM17543EVKIT#	EV Kit

#Denotes RoHS compliant.

MAXM17543 3.3V Output
Evaluation Kit

Evaluates: MAXM17543 in 3.3V
Output-Voltage Application

Revision History

REVISION NUMBER	REVISION DATE	DESCRIPTION	PAGES CHANGED
0	5/15	Initial release	—

For pricing, delivery, and ordering information, please contact Maxim Direct at 1-888-629-4642, or visit Maxim Integrated's website at www.maximintegrated.com.

Maxim Integrated cannot assume responsibility for use of any circuitry other than circuitry entirely embodied in a Maxim Integrated product. No circuit patent licenses are implied. Maxim Integrated reserves the right to change the circuitry and specifications without notice at any time.

Компания «Океан Электроники» предлагает заключение долгосрочных отношений при поставках импортных электронных компонентов на взаимовыгодных условиях!

Наши преимущества:

- Поставка оригинальных импортных электронных компонентов напрямую с производств Америки, Европы и Азии, а так же с крупнейших складов мира;
- Широкая линейка поставок активных и пассивных импортных электронных компонентов (более 30 млн. наименований);
- Поставка сложных, дефицитных, либо снятых с производства позиций;
- Оперативные сроки поставки под заказ (от 5 рабочих дней);
- Экспресс доставка в любую точку России;
- Помощь Конструкторского Отдела и консультации квалифицированных инженеров;
- Техническая поддержка проекта, помощь в подборе аналогов, поставка прототипов;
- Поставка электронных компонентов под контролем ВП;
- Система менеджмента качества сертифицирована по Международному стандарту ISO 9001;
- При необходимости вся продукция военного и аэрокосмического назначения проходит испытания и сертификацию в лаборатории (по согласованию с заказчиком);
- Поставка специализированных компонентов военного и аэрокосмического уровня качества (Xilinx, Altera, Analog Devices, Intersil, Interpoint, Microsemi, Actel, Aeroflex, Peregrine, VPT, Syfer, Eurofarad, Texas Instruments, MS Kennedy, Miteq, Cobham, E2V, MA-COM, Hittite, Mini-Circuits, General Dynamics и др.);

Компания «Океан Электроники» является официальным дистрибьютором и эксклюзивным представителем в России одного из крупнейших производителей разъемов военного и аэрокосмического назначения «JONHON», а так же официальным дистрибьютором и эксклюзивным представителем в России производителя высокотехнологичных и надежных решений для передачи СВЧ сигналов «FORSTAR».



JONHON

«JONHON» (основан в 1970 г.)

Разъемы специального, военного и аэрокосмического назначения:

(Применяются в военной, авиационной, аэрокосмической, морской, железнодорожной, горно- и нефтедобывающей отраслях промышленности)

«FORSTAR» (основан в 1998 г.)

ВЧ соединители, коаксиальные кабели, кабельные сборки и микроволновые компоненты:

(Применяются в телекоммуникациях гражданского и специального назначения, в средствах связи, РЛС, а так же военной, авиационной и аэрокосмической отраслях промышленности).



Телефон: 8 (812) 309-75-97 (многоканальный)

Факс: 8 (812) 320-03-32

Электронная почта: ocean@oceanchips.ru

Web: <http://oceanchips.ru/>

Адрес: 198099, г. Санкт-Петербург, ул. Калинина, д. 2, корп. 4, лит. А