

0.5 to 6.0 GHz SPDT SWITCH
DESCRIPTION

The μ PG2415TK is a GaAs MMIC SPDT (Single Pole Double Throw) switch for 0.5 to 6.0 GHz applications, including dual-band wireless LAN.

This device operates with dual control switching voltages of 2.7 to 5.3 V. This device can operate at frequencies from 0.5 to 6.0 GHz, with low insertion loss and high isolation.

This device is housed in a 6-pin lead-less minimold package (1511 PKG) and is suitable for high-density surface mounting.

FEATURES

- Switch control voltage : $V_{\text{cont (H)}} = 3.0 \text{ V TYP.}$
: $V_{\text{cont (L)}} = 0 \text{ V TYP.}$
- Low insertion loss : $L_{\text{ins}} = 0.45 \text{ dB TYP. @ } f = 2.5 \text{ GHz}$
: $L_{\text{ins}} = 0.65 \text{ dB TYP. @ } f = 6.0 \text{ GHz}$
- High isolation : $ISL = 28 \text{ dB TYP. @ } f = 2.5 \text{ GHz}$
: $ISL = 26 \text{ dB TYP. @ } f = 6.0 \text{ GHz}$
- Handling power : $P_{\text{in (0.1 dB)}} = +31.0 \text{ dBm TYP. @ } f = 2.0 \text{ to } 6.0 \text{ GHz}$
- High-density surface mounting : 6-pin lead-less minimold package (1.5 × 1.1 × 0.55 mm)

APPLICATIONS

- Dual-band wireless LAN etc.

ORDERING INFORMATION

| Part Number | Order Number | Package | Marking | Supplying Form |
|-------------------|---------------------|--|---------|--|
| μ PG2415TK-E2 | μ PG2415TK-E2-A | 6-pin lead-less minimold (1511 PKG) (Pb-Free) | G6D | <ul style="list-style-type: none"> • Embossed tape 8 mm wide • Pin 1, 6 face the perforation side of the tape • Qty 5 kpcs/reel |

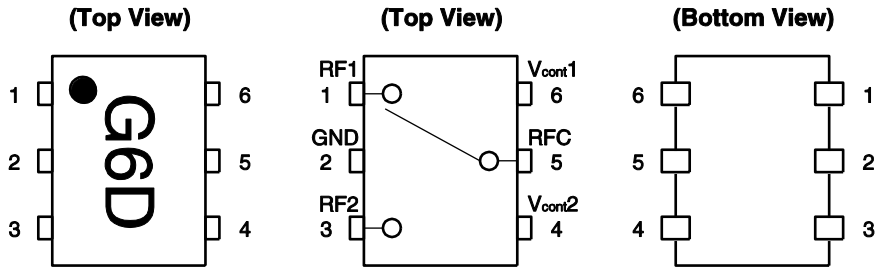
Remark To order evaluation samples, please contact your nearby sales office.

Part number for sample order: μ PG2415TK-A

Caution Although this device is designed to be as robust as possible, ESD (Electrostatic Discharge) can damage this device. This device must be protected at all times from ESD. Static charges may easily produce potentials of several kilovolts on the human body or equipment, which can discharge without detection. Industry-standard ESD precautions must be employed at all times.

The information in this document is subject to change without notice. Before using this document, please confirm that this is the latest version.

PIN CONNECTIONS AND INTERNAL BLOCK DIAGRAM



| Pin No. | Pin Name |
|---------|--------------------|
| 1 | RF1 |
| 2 | GND |
| 3 | RF2 |
| 4 | V _{cont2} |
| 5 | RFC |
| 6 | V _{cont1} |

SW TRUTH TABLE

| | | |
|---------|--------------------|--------------------|
| ON Path | V _{cont1} | V _{cont2} |
| RFC-RF1 | High | Low |
| RFC-RF2 | Low | High |

ABSOLUTE MAXIMUM RATINGS (T_A = +25°C, unless otherwise specified)

| Parameter | Symbol | Ratings | Unit |
|---|-------------------|----------------------|------|
| Switch Control Voltage | V _{cont} | +6.0 ^{Note} | V |
| Input Power (V _{cont (H)} = 3.0 V) | P _{in} | +34.0 | dBm |
| Input Power (V _{cont (H)} = 5.0 V) | P _{in} | +35.0 | dBm |
| Power Dissipation (average) | P _D | 0.15 | W |
| Operating Ambient Temperature | T _A | -45 to +85 | °C |
| Storage Temperature | T _{stg} | -55 to +150 | °C |

Note |V_{cont1} - V_{cont2}| ≤ 6.0 V

RECOMMENDED OPERATING RANGE (T_A = +25°C, unless otherwise specified)

| Parameter | Symbol | MIN. | TYP. | MAX. | Unit |
|----------------------------|--|------|------|------|------|
| Operating Frequency | f | 0.5 | - | 6.0 | GHz |
| Switch Control Voltage (H) | V _{cont (H)} | 2.7 | 3.0 | 5.3 | V |
| Switch Control Voltage (L) | V _{cont (L)} | -0.2 | 0 | 0.2 | V |
| Control Voltage Difference | ΔV _{cont (H)} , ΔV _{cont (L)} ^{Note} | -0.1 | 0 | 0.1 | V |

Note ΔV_{cont (H)} = V_{cont1 (H)} - V_{cont2 (H)}
 ΔV_{cont (L)} = V_{cont1 (L)} - V_{cont2 (L)}

ELECTRICAL CHARACTERISTICS

(T_A = +25°C, V_{cont} (H) = 3.0 V, V_{cont} (L) = 0 V, Z_o = 50 Ω, DC blocking capacitors = 8 pF, unless otherwise specified)

| Parameter | Symbol | Test Conditions | MIN. | TYP. | MAX. | Unit |
|--|--------------------------|--|------|-------|------|------|
| Insertion Loss 1 | L _{ins1} | f = 0.5 to 2.0 GHz ^{Note 1} | – | 0.40 | 0.65 | dB |
| Insertion Loss 2 | L _{ins2} | f = 2.0 to 2.5 GHz | – | 0.45 | 0.70 | dB |
| Insertion Loss 3 | L _{ins3} | f = 2.5 to 3.8 GHz | – | 0.55 | 0.80 | dB |
| Insertion Loss 4 | L _{ins4} | f = 3.8 to 6.0 GHz | – | 0.65 | 0.90 | dB |
| Isolation 1 | ISL1 | f = 0.5 to 2.0 GHz ^{Note 1} | 25 | 28 | – | dB |
| Isolation 2 | ISL2 | f = 2.0 to 2.5 GHz | 25 | 28 | – | dB |
| Isolation 3 | ISL3 | f = 2.5 to 3.8 GHz | 25 | 28 | – | dB |
| Isolation 4 | ISL4 | f = 3.8 to 6.0 GHz | 22 | 26 | – | dB |
| Return Loss 1 | RL1 | f = 0.5 to 2.0 GHz ^{Note 1} | 15 | 20 | – | dB |
| Return Loss 2 | RL2 | f = 2.0 to 2.5 GHz | 15 | 20 | – | dB |
| Return Loss 3 | RL3 | f = 2.5 to 6.0 GHz | 10 | 15 | – | dB |
| 0.1 dB Loss Compression Input Power ^{Note 2} | P _{in (0.1 dB)} | f = 0.5 to 2.0 GHz ^{Note 1} | – | +32.0 | – | dBm |
| | | f = 2.0 to 6.0 GHz | – | +31.0 | – | dBm |
| | | f = 0.5 to 6.0 GHz ^{Note 1} , V _{cont (H)} = 5.0 V | – | +35.0 | – | dBm |
| 1 dB Loss Compression Input Power ^{Note 3} | P _{in (1 dB)} | f = 0.5 to 2.0 GHz ^{Note 1} | – | +34.0 | – | dBm |
| | | f = 2.0 to 6.0 GHz | – | +34.0 | – | dBm |
| Input 3rd Order Intercept Point | IIP ₃ | f = 2.5 GHz, P _{in} = +20 dBm | – | +60 | – | dBm |
| 2nd Harmonics | 2f _o | f = 2.5 GHz, P _{in} = +20 dBm | – | 80 | – | dBc |
| 3rd Harmonics | 3f _o | f = 2.5 GHz, P _{in} = +20 dBm | – | 80 | – | dBc |
| Switch Control Current | I _{cont} | No RF input | – | 0.1 | 10 | μA |
| Switch Control Speed | t _{sw} | 50% CTL to 90/10% RF | – | 50 | 250 | ns |

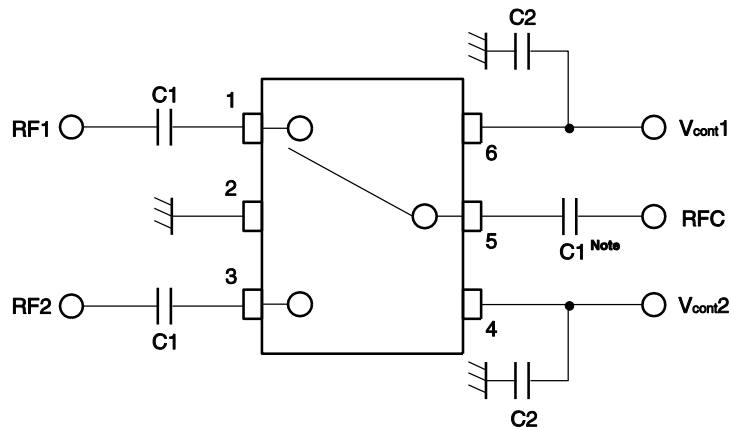
Notes 1. DC blocking capacitors = 56 pF at f = 0.5 to 2.0 GHz

- 2.** P_{in (0.1 dB)} is the measured input power level when the insertion loss increases 0.1 dB more than that of the linear range.
- 3.** P_{in (1 dB)} is the measured input power level when the insertion loss increases 1 dB more than that of the linear range.

Caution It is necessary to use DC blocking capacitors with this device.

The value of DC blocking capacitors should be chosen to accommodate the frequency of operation, bandwidth, switching speed and the condition with actual board of your system.

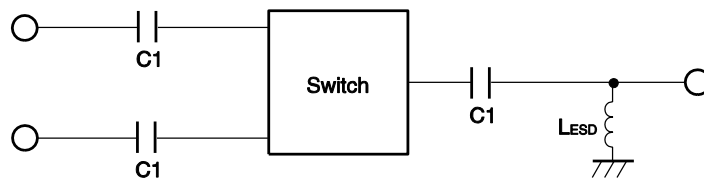
EVALUATION CIRCUIT



Note C1 : 0.5 to 2.0 GHz 56 pF
 : 2.0 to 6.0 GHz 8 pF
 C2 : 1 000 pF

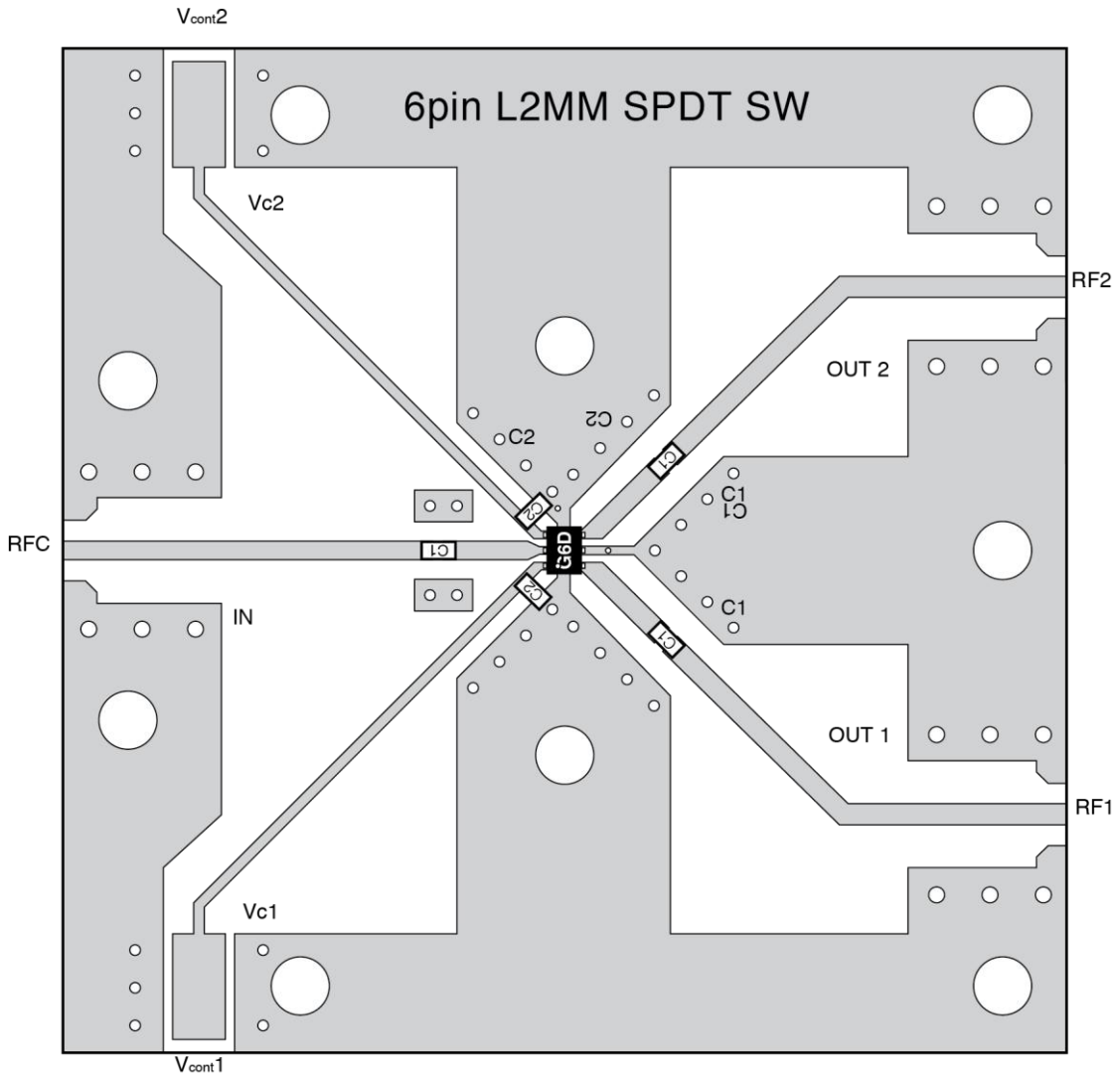
The application circuits and their parameters are for reference only and are not intended for use in actual design-ins

APPLICATION INFORMATION



- LESD provides a means to increase the ESD protection on a specific RF port, typically the port attached to the antenna.
- The value may be tailored to provide specific electrical responses.
- The RF ground connections should be kept as short as possible and connected to directly to a good RF ground for best performance.

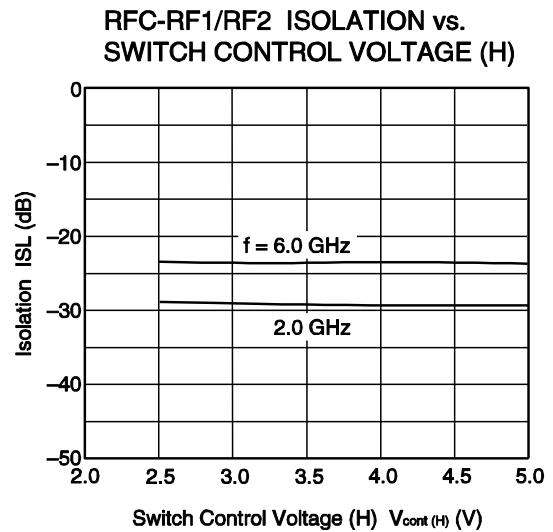
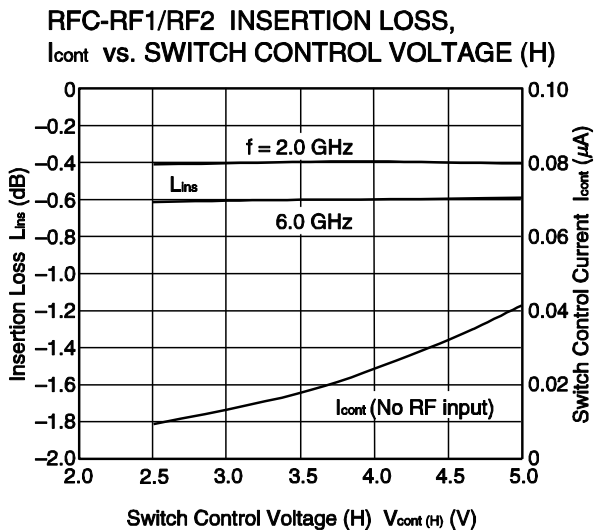
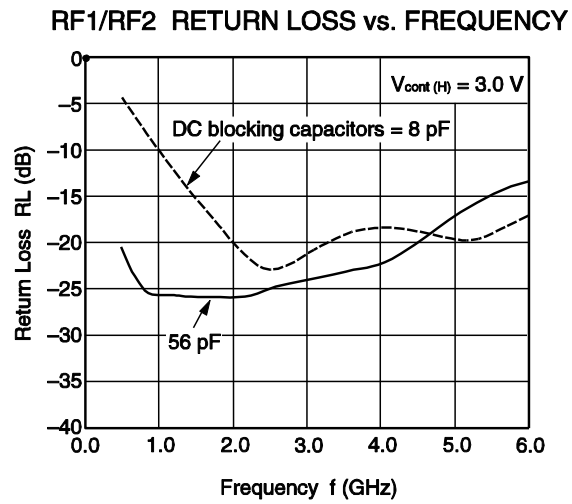
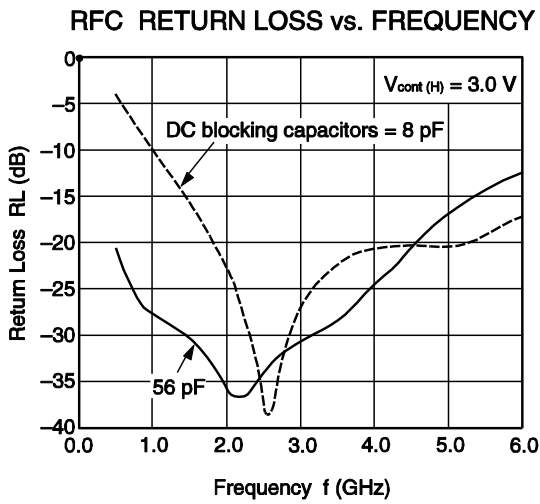
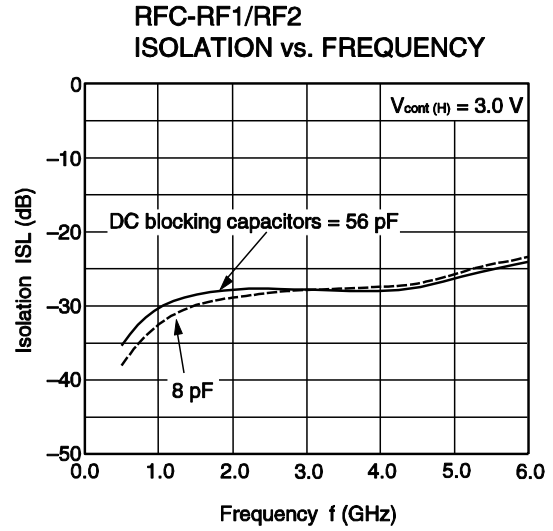
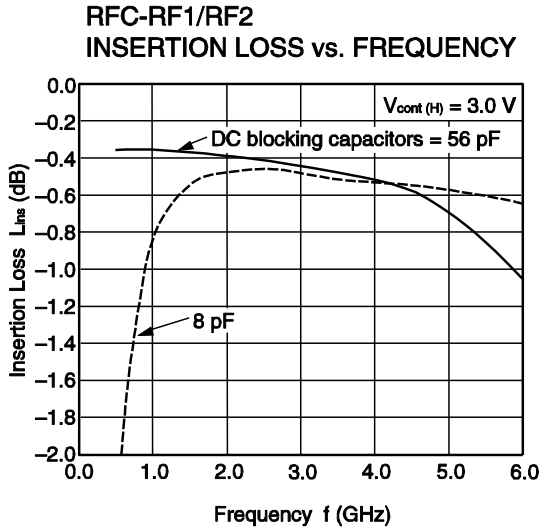
ILLUSTRATION OF THE TEST CIRCUIT ASSEMBLED ON EVALUATION BOARD



USING THE EVALUATION BOARD

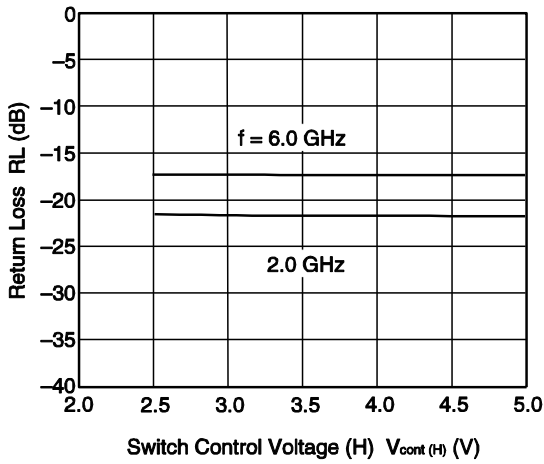
| Symbol | Test Conditions | Values |
|--------|--------------------|----------|
| C1 | f = 0.5 to 2.0 GHz | 56 pF |
| | f = 2.0 to 6.0 GHz | 8 pF |
| C2 | | 1 000 pF |

TYPICAL CHARACTERISTICS ($T_A = +25^\circ\text{C}$, $V_{\text{cont (H)}} = 3.0\text{ V}$, $V_{\text{cont (L)}} = 0\text{ V}$, $Z_0 = 50\ \Omega$, DC blocking capacitors = 8 pF, unless otherwise specified)

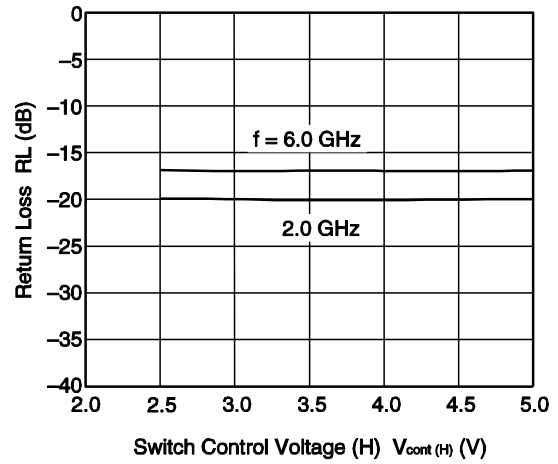


Remark The graphs indicate nominal characteristics.

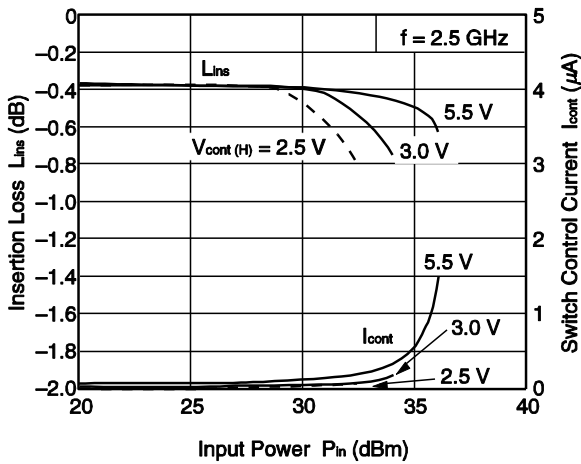
RFC RETURN LOSS vs. SWITCH CONTROL VOLTAGE (H)



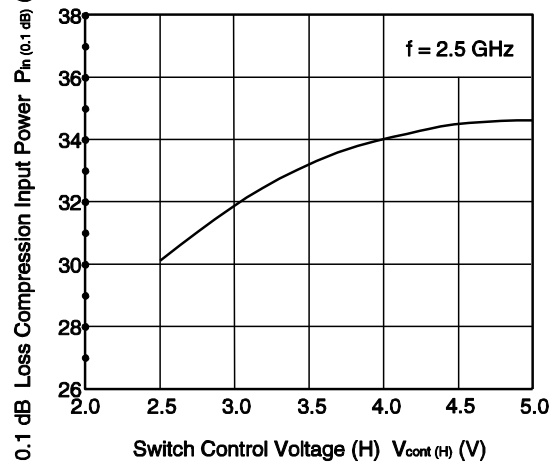
RF1/RF2 RETURN LOSS vs. SWITCH CONTROL VOLTAGE (H)



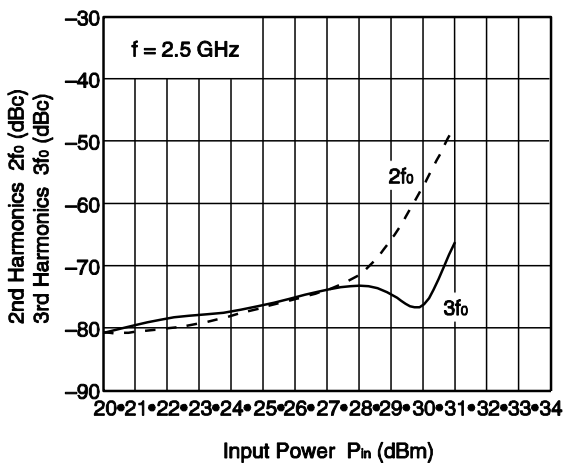
RFC-RF1/RF2 INSERTION LOSS, I_{cont} vs. INPUT POWER



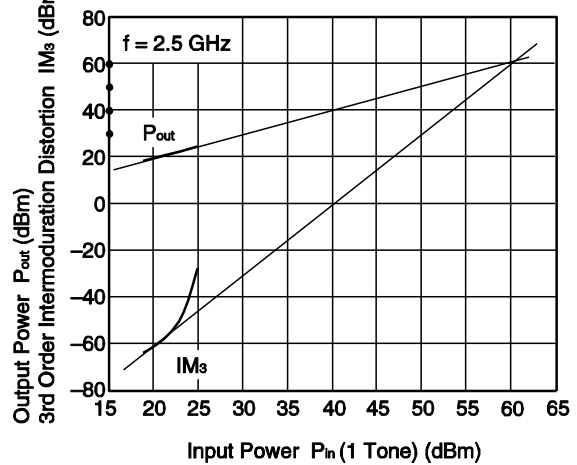
RFC-RF1/RF2 $P_{in(0.1dB)}$ vs. SWITCH CONTROL VOLTAGE (H)



RFC-RF1/RF2 • $2f_0, 3f_0$ vs. INPUT POWER



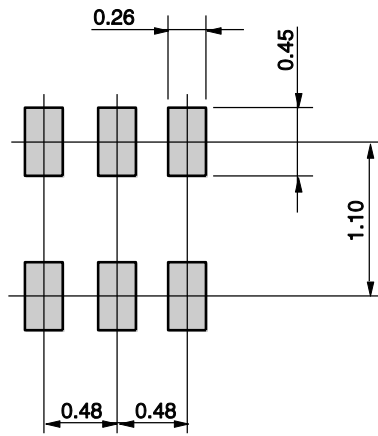
RFC-RF1/RF2 OUTPUT POWER, IM_3 vs. INPUT POWER



Remark The graphs indicate nominal characteristics.

MOUNTING PAD LAYOUT DIMENSIONS

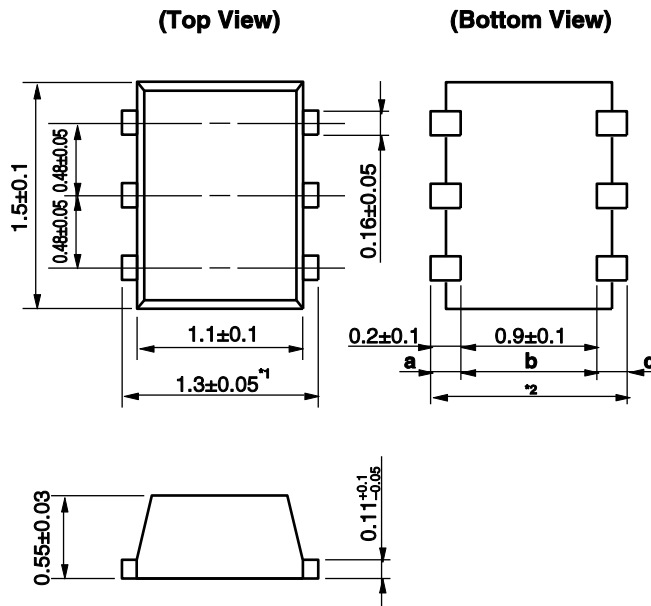
6-PIN LEAD-LESS MINIMOLD (1511 PKG) (UNIT: mm)



Remark The mounting pad layout in this document is for reference only.

PACKAGE DIMENSIONS

6-PIN LEAD-LESS MINIMOLD (1511 PKG) (UNIT: mm)



Remark Dimension¹ is bigger than dimension² (dimension² = a + b + c).

RECOMMENDED SOLDERING CONDITIONS

This product should be soldered and mounted under the following recommended conditions. For soldering methods and conditions other than those recommended below, contact your nearby sales office.

| Soldering Method | Soldering Conditions | Condition Symbol |
|------------------|---|------------------|
| Infrared Reflow | Peak temperature (package surface temperature) : 260°C or below Time at peak temperature : 10 seconds or less Time at temperature of 220°C or higher : 60 seconds or less Preheating time at 120 to 180°C : 120±30 seconds Maximum number of reflow processes : 3 times Maximum chlorine content of rosin flux (% mass) : 0.2%(Wt.) or below | IR260 |
| Wave Soldering | Peak temperature (molten solder temperature) : 260°C or below Time at peak temperature : 10 seconds or less Preheating temperature (package surface temperature) : 120°C or below Maximum number of flow processes : 1 time Maximum chlorine content of rosin flux (% mass) : 0.2%(Wt.) or below | WS260 |
| Partial Heating | Peak temperature (terminal temperature) : 350°C or below Soldering time (per side of device) : 3 seconds or less Maximum chlorine content of rosin flux (% mass) : 0.2%(Wt.) or below | HS350 |

Caution Do not use different soldering methods together (except for partial heating).

| | | |
|-----------------------|----------------------|---|
| <p>Caution</p> | <p>GaAs Products</p> | <p>This product uses gallium arsenide (GaAs). GaAs vapor and powder are hazardous to human health if inhaled or ingested, so please observe the following points.</p> <ul style="list-style-type: none"> • Follow related laws and ordinances when disposing of the product. If there are no applicable laws and/or ordinances, dispose of the product as recommended below. <ol style="list-style-type: none"> 1. Commission a disposal company able to (with a license to) collect, transport and dispose of materials that contain arsenic and other such industrial waste materials. 2. Exclude the product from general industrial waste and household garbage, and ensure that the product is controlled (as industrial waste subject to special control) up until final disposal. <ul style="list-style-type: none"> • Do not burn, destroy, cut, crush, or chemically dissolve the product. • Do not lick the product or in any way allow it to enter the mouth. |
|-----------------------|----------------------|---|

Компания «Океан Электроники» предлагает заключение долгосрочных отношений при поставках импортных электронных компонентов на взаимовыгодных условиях!

Наши преимущества:

- Поставка оригинальных импортных электронных компонентов напрямую с производств Америки, Европы и Азии, а так же с крупнейших складов мира;
- Широкая линейка поставок активных и пассивных импортных электронных компонентов (более 30 млн. наименований);
- Поставка сложных, дефицитных, либо снятых с производства позиций;
- Оперативные сроки поставки под заказ (от 5 рабочих дней);
- Экспресс доставка в любую точку России;
- Помощь Конструкторского Отдела и консультации квалифицированных инженеров;
- Техническая поддержка проекта, помощь в подборе аналогов, поставка прототипов;
- Поставка электронных компонентов под контролем ВП;
- Система менеджмента качества сертифицирована по Международному стандарту ISO 9001;
- При необходимости вся продукция военного и аэрокосмического назначения проходит испытания и сертификацию в лаборатории (по согласованию с заказчиком);
- Поставка специализированных компонентов военного и аэрокосмического уровня качества (Xilinx, Altera, Analog Devices, Intersil, Interpoint, Microsemi, Actel, Aeroflex, Peregrine, VPT, Syfer, Eurofarad, Texas Instruments, MS Kennedy, Miteq, Cobham, E2V, MA-COM, Hittite, Mini-Circuits, General Dynamics и др.);

Компания «Океан Электроники» является официальным дистрибьютором и эксклюзивным представителем в России одного из крупнейших производителей разъемов военного и аэрокосмического назначения «JONHON», а так же официальным дистрибьютором и эксклюзивным представителем в России производителя высокотехнологичных и надежных решений для передачи СВЧ сигналов «FORSTAR».



JONHON

«JONHON» (основан в 1970 г.)

Разъемы специального, военного и аэрокосмического назначения:

(Применяются в военной, авиационной, аэрокосмической, морской, железнодорожной, горно- и нефтедобывающей отраслях промышленности)

«FORSTAR» (основан в 1998 г.)

ВЧ соединители, коаксиальные кабели, кабельные сборки и микроволновые компоненты:

(Применяются в телекоммуникациях гражданского и специального назначения, в средствах связи, РЛС, а так же военной, авиационной и аэрокосмической отраслях промышленности).



Телефон: 8 (812) 309-75-97 (многоканальный)

Факс: 8 (812) 320-03-32

Электронная почта: ocean@oceanchips.ru

Web: <http://oceanchips.ru/>

Адрес: 198099, г. Санкт-Петербург, ул. Калинина, д. 2, корп. 4, лит. А