

Cradle N Relay V23154/V23162

- Multi purpose relay
- Highly reliable
- Great variety of contact arrangements and materials to meet specific applications
- Contacts for signal loads and currents up to 5 A
- DC coil, operating voltage 1.5VDC to 125VDC; AC, latching and non-latching coils on request
- Sockets for easy and quick mounting of relays

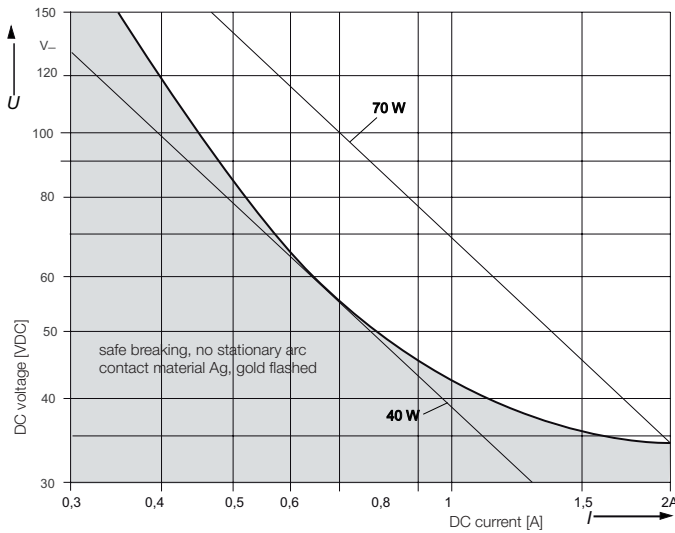


Typical applications
Measurement and control equipment, control equipment in nuclear powerplant, press controls with high safety requirements (force-guided springs), telecommunications

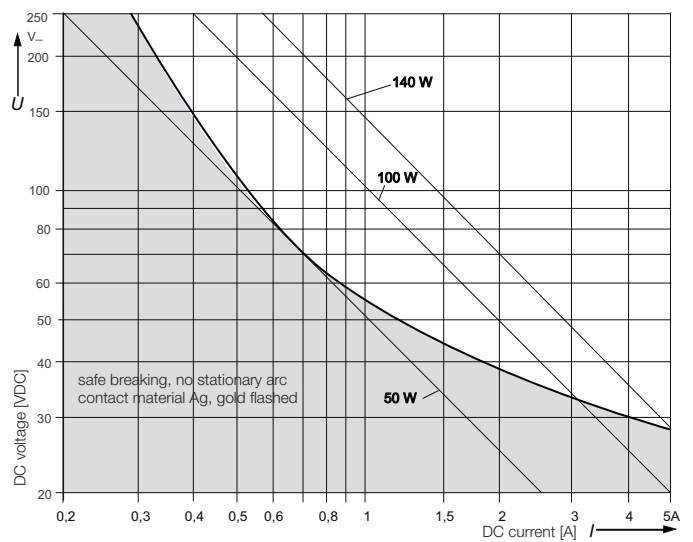
Contact Data

| Product code block 3 | B104/B110/B112 | B604/B610/B612 | C104/C110/C112 | C404/C410 | F104 to F107 |
|--|--|---------------------------|---------------------------|---------------------------|---------------------------|
| Contact arrangement | max. 4 form C (4 CO) contacts, 2 form B (2 NC) contacts or 6 form A (6 NO) contacts (see product code table) | | | | |
| Max. switching voltage | 150VDC 125VAC | 36VDC 30VAC | 150VDC 125VAC | 36VDC 30VAC | 150VDC 125VAC |
| Rated current | 2A | 0.2A | 2A | 0.2A | 5A |
| Limiting continuous current at max. ambient temperature | 2A | 2A | 2A | 2A | 5A |
| Breaking capacity max. see DC load breaking capacity curve below | 35 to 70W 50VA | 5W, 5VA - | 35 to 70W 50VA | 5W, 5VA - | 50 to 140W 500VA |
| Contact material | silver, gold-flashed | gold F | silver, gold-flashed | gold F | silver, gold-flashed |
| Contact style | single contact | single contact | bifurcated contacts | bifurcated contacts | single contact |
| Frequency of operation, without load, max. | 50 ops./s | 50 ops./s | 50 ops./s | 50 ops./s | 10 ops./s |
| Operate / release time typ. | 7.5/3ms | 7.5/3ms | 7.5/3ms | 7.5/3ms | 7.5/3ms |
| Mechanical endurance | app. 10 ⁷ ops. | app. 10 ⁷ ops. | app. 10 ⁷ ops. | app. 10 ⁷ ops. | app. 10 ⁷ ops. |

Max. DC breaking capacity, contact sets B1xx, C1xx



Max. DC breaking capacity, contact sets F1xx



Cradle N Relay V23154/V23162 (Continued)

Coil Data

| | |
|-----------------------|---|
| Magnetic system | neutral |
| Coil voltage range | 1.1 to 125 VDC, typ. 800mW power consumption |
| Max. coil temperature | 100 °C |
| Thermal resistance | < 50K/W |

Coil versions, DC coil, monostable

| Coil code | Rated voltage VDC | Operate/Limiting voltage ¹⁾ VDC | Coil resistance $\Omega \pm 15\%$ | Rated coil power mW |
|-----------|-------------------|--|-----------------------------------|---------------------|
| 702 | 1.1 | - | 2 | 807 |
| 711 | 5 | - | 28 | 893 |
| 712 | 7 | - | 58 | 845 |
| 715 | 9 | - | 110 | 736 |
| 716 | 10 | - | 150 | 667 |
| 717 | 12 | - | 220 | 655 |
| 719 | 15 | - | 325 | 692 |
| 720 | 20 | - | 550 | 727 |
| 721 | 24 | - | 890 | 647 |
| 722 | 32 | - | 1700 | 602 |
| 726 | 48 | - | 3200 | 720 |
| 734 | 60 | - | 4700 | 766 |
| 704 | 72 | - | 7600 | 682 |
| 735 | 110 | - | 15000 | 807 |
| 703 | 125 | - | 20900 | 748 |

1) refer to 'Part code table'.

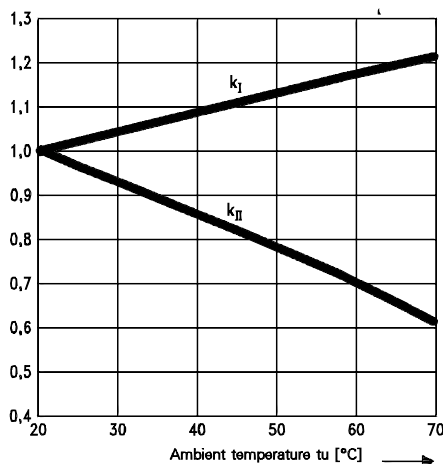
All figures are given for coil without pre-energization, at ambient temperature +23°C.

Coil versions, DC coil, monostable

| Coil code | Rated voltage VDC | Operate/Limiting voltage ¹⁾ VDC | Coil resistance $\Omega \pm 15\%$ | Rated coil power mW |
|-----------|-------------------|--|-----------------------------------|---------------------|
| 430 | 10 | - | 140 | 714 |
| 418 | 12 | - | 230 | 626 |
| 471 | 12 | - | 220 | 655 |
| 479 | 16 | - | 390 | 656 |
| 421 | 24 | - | 700 | 823 |
| 472 | 24 | - | 890 | 647 |
| 496 | 25 | - | 730 | 856 |
| 473 | 60 | - | 4700 | 766 |
| 404 | 72 | - | 5800 | 894 |

1) refer to 'Part code table'.

All figures are given for coil without pre-energization, at ambient temperature +23°C.



Coil data (continued)

Terminals:

- coil with 1 winding: start 4, end 1
- coil with 2 windings (upon request): start 3, end 2 for winding I, start 4, end 1 for winding II

The minimum voltage U_I depends on the contact set and the ambient temperature, the maximum voltage U_{II} only depends on the ambient temperature.

Between minimum voltage $U_{I,tamb}$ and operating voltage U a safety margin of approx. 20% is recommended.

| | |
|--------------------|---|
| $U_{I,tamb}$ (1.2) | $< U_I \leq U_{II,tamb}$ |
| $U_{I,tamb}$ | $U_I \cdot U_{20\text{ °C}} \cdot k_{I,tamb}$ |
| $U_{II,tamb}$ | $U_{II} \cdot U_{20\text{ °C}} \cdot k_{II,tamb}$ |
| tamb | Ambient temperature |
| U | Operating voltage |
| $U_{I,tamb}$ | Minimum voltage at ambient temperature, tamb |
| $U_{II,tamb}$ | Maximum voltage at ambient temperature, tamb |
| k_I and k_{II} | Factors |

Insulation Data

| Product code, block 3 | B1xx, B6xx, C1xx, C4xx | F1xx |
|--|------------------------|----------------------|
| Initial dielectric strength | | |
| between coil / frame | 500V _{rms} | 500V _{rms} |
| between contact / contact | 500V _{rms} | 1000V _{rms} |
| between contact / frame | 500V _{rms} | 1000V _{rms} |
| between contact / coil | 1000V _{rms} | 1500V _{rms} |
| Initial insulation resistance, at 500VDC | > 106Ω | |

Other Data

Material compliance: EU RoHS/ELV, China RoHS, REACH, Halogen content refer to the Product Compliance Support Center at www.te.com/customer-support/rohssupportcenter

| | |
|--------------------------------------|--|
| Ambient temperature | -40 to +70°C |
| Category of environmental protection | IEC 61810 |
| Degree of protection, IEC 60529 | RT - I dust protected, RT V - hermetically sealed dust-protected IP 30, hermetically sealed IP 67 |
| Terminal type | PCB, plug-in, solder terminals |
| Weight | V23154-C0/-MO Size I approx. 20g V23154-D0/-NO Size II approx. 25g V23162-A0xxx Size I approx. 30g V23162-B0xxx Size II approx. 35g |
| Washing | not recommended |
| Ultrasonic cleaning | not recommended |
| Packaging unit | 5 pcs. |

Accessories

For details see datasheet Cradle Relay, Accessories and Mounting

Cradle N Relay V23154/V23162 (Continued)

Terminal assignment

Size I

2 form C (2 CO)
V231xx-xxxx-Bx04
V231xx-xxxx-Cx04



2 form A (2 NO)
V231xx-xxxx-F105



2 form B (2 NC)
V231xx-xxxx-F107



1 form A + 1 form B
(1 NO + 1 NC)
V231xx-xxxx-F106



Size II

6 form A (6 NO)
V231xx-xxxx-Bx12
V231xx-xxxx-Cx12



4 form C (4 CO)
V231xx-xxxx-Bx10

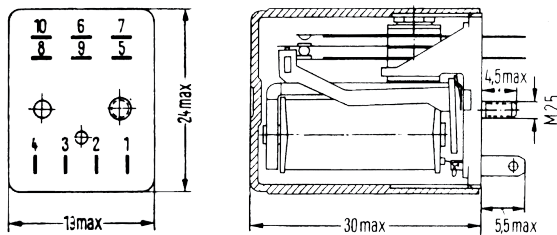


2 form C (2 CO)
V231xx-xxxx-F104



Dimensions

V23154-C0xx, size I type



V23154-D0xx, size II type



V23162-A0xx, size I type



V23162-B0xx, size II type
V23162-H0xx, size II type



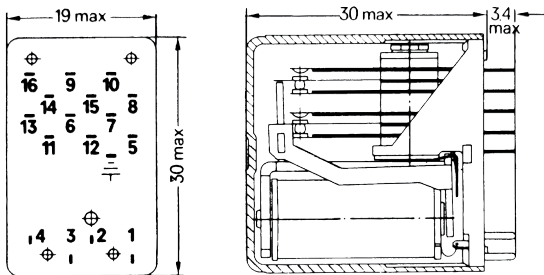
Cradle N Relay V23154/V23162 (Continued)

Dimensions

V23154-Mxxx, size I type



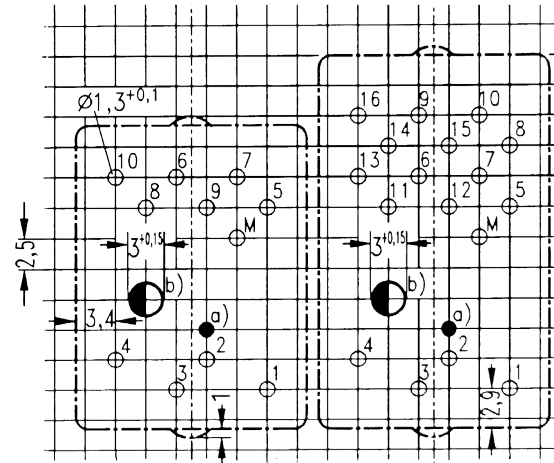
V23154-Nxxx, size II type



PCB layout

TOP view on component side of PCB

V23154-M/Nxx versions



M = Earth terminal
a) Hole for mechanical armature actuation, if required
b) Hole for socket mounting with screw M1.6.

Instructions for Impulse Operation

The maximum voltage stated in the part code table can be increased for impulse operation as follows:

$$U_{II \text{ impuls}} = U_{II \text{ tamb}} \times q$$

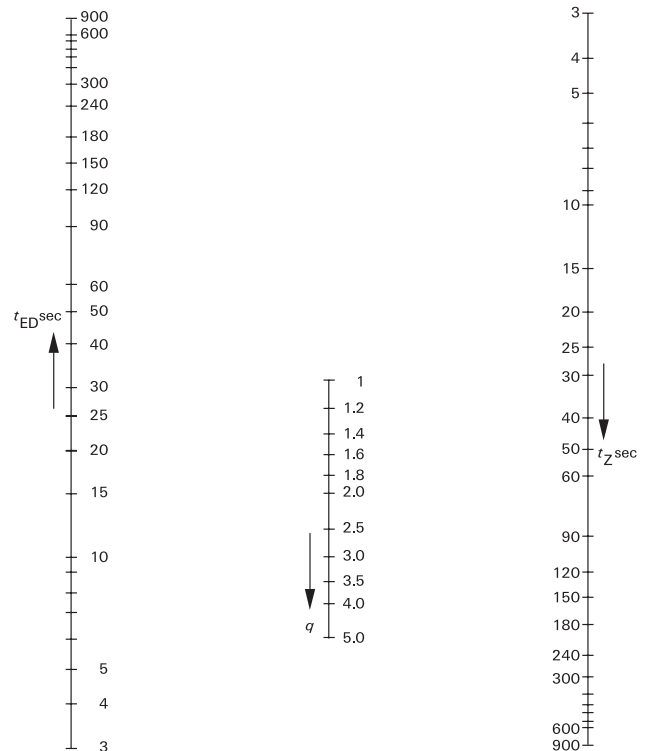
$U_{II \text{ tamb}}$ Maximum continuous voltage at ambient temperature t_{amb}
 q Factor

The impulse voltage must not exceed 80% of the test voltage (winding/frame or winding/winding) or 2.5 times the value of the maximum voltage listed in the part code table.

If $t_{ED} \leq 3s$ then $q = \sqrt{\frac{t_z}{t_{ED}}}$; If $t_{ED} =$ Pulse width, $t_z =$ Cycle time. If $t_{ED} > 3s$ the value of q must be obtained from the nomograph.

Examples of various periodic pulse trains (energizing side)

1. Periodic recurrence of one energizing pulse
2. Periodic recurrence of two unequal energizing pulses



Cradle N Relay V23154/V23162 (Continued)

| | | | | | | | |
|-------------------------------|--|--|---------------------|------------|--------------------------------|------------|-----------|
| Product code structure | | Typical product code | V23154 | -D0 | 721 | -B1 | 10 |
| Type | | | | | | | |
| V23154 | Cradle N Relay, dust protected | | | | | | |
| V23162 | Cradle N Relay, hermetically sealed | | | | | | |
| Version | | | | | | | |
| V23154 types | | | | | | | |
| C0 | Size I, for plug-in and screw fixing, hand solder terminals silver-plated, with earth terminal, dust-protected (V23154) | | | | | | |
| D0 | Size II, for plug-in and screw fixing, hand solder terminals silver-plated, with earth terminal, dust-protected (V23154) | | | | | | |
| M0 | Size I, for printed circuit mounting, with earth terminal, dust-protected (V23154) | | | | | | |
| M4 | Size I, for printed circuit mounting, without earth terminal, dust-protected (V23154) | | | | | | |
| N0 | Size II, for printed circuit mounting, with earth terminal, dust-protected (V23154) | | | | | | |
| N4 | Size II, for printed circuit mounting, without earth terminal, dust-protected (V23154) | | | | | | |
| V23162 types | | | | | | | |
| A0 | Size I, for plug-in and screw fixing, hand solder terminals tinned, hermetically sealed (V23162) | | | | | | |
| B0 | Size II, for plug-in and screw fixing, hand solder terminals tinned, hermetically sealed (V23162) | | | | | | |
| H0 | Size II, for plug-in and screw, fixing, hand solder terminals, gold-plated, hermetically sealed (V23162) | | | | | | |
| Coils | | Coil code: please refer to coil versions table | | | | | |
| Contact style | | | | | | | |
| B1 | Single contacts | B6 | Single contacts | F1 | Single contacts | | |
| C1 | Bifurcated contacts | C4 | Bifurcated contacts | | | | |
| Contact arrangement | | | | | | | |
| 04 | 2 form C, 2 CO | 05 | 2 form A, 1 NO | 06 | 1 form A+ 1 form B, 1 NO+ 1 NC | | |
| 07 | 2 form B, 2 NC | 10 | 4 form C, 4 CO | 12 | 6 form A, 6 NO | | |

Other types on request

| Product code | Version | Coil | Operate/Lim.Arrangement | Contacts | Terminals | Enclosure | PartNumber |
|--------------------------------------|------------------|--------|-------------------------|-----------------|------------|----------------|----------------------------|
| V23154-C0XX, standard, size I | | | | | | | |
| V23154-C0711-B104 | Standard, size I | 5VDC | 1.8/7.2VDC | 2 form C (2 CO) | Single | Plug-in/solder | Dust protected 5-1393806-3 |
| V23154-C0711-B604 | Standard, size I | 5VDC | 1.8/7.2VDC | 2 form C (2 CO) | Single | Plug-in/solder | Dust protected 5-1393806-4 |
| V23154-C0712-B104 | Standard, size I | 7VDC | 2.7/10.5VDC | 2 form C (2 CO) | Single | Plug-in/solder | Dust protected 5-1393806-5 |
| V23154-C0712-B604 | Standard, size I | 7VDC | 2.7/10.5VDC | 2 form C (2 CO) | Single | Plug-in/solder | Dust protected 5-1393806-6 |
| V23154-C0430-B104 | Standard, size I | 10VDC | 7.1/16VDC | 2 form C (2 CO) | Single | Plug-in/solder | Dust protected 2-1393806-0 |
| V23154-C0418-B104 | Standard, size I | 12VDC | 6.6/20.5VDC | 2 form C (2 CO) | Single | Plug-in/solder | Dust protected 1393806-8 |
| V23154-C0717-B104 | Standard, size I | 12VDC | 5.3/20VDC | 2 form C (2 CO) | Single | Plug-in/solder | Dust protected 6-1393806-7 |
| V23154-C0717-C104 | Standard, size I | 12VDC | 7.1/20VDC | 2 form C (2 CO) | Bifurcated | Plug-in/solder | Dust protected 6-1393806-8 |
| V23154-C0719-B104 | Standard, size I | 15VDC | 6.8/24.5VDC | 2 form C (2 CO) | Single | Plug-in/solder | Dust protected 7-1393806-1 |
| V23154-C0719-B604 | Standard, size I | 15VDC | 6.8/24.5VDC | 2 form C (2 CO) | Single | Plug-in/solder | Dust protected 7-1393806-2 |
| V23154-C0719-C104 | Standard, size I | 15VDC | 9.1/24.5VDC | 2 form C (2 CO) | Bifurcated | Plug-in/solder | Dust protected 7-1393806-3 |
| V23154-C0719-C404 | Standard, size I | 15VDC | 9.1/24.5VDC | 2 form C (2 CO) | Bifurcated | Plug-in/solder | Dust protected 7-1393806-4 |
| V23154-C0720-B104 | Standard, size I | 20VDC | 8.9/32VDC | 2 form C (2 CO) | Single | Plug-in/solder | Dust protected 7-1393806-8 |
| V23154-C0720-B604 | Standard, size I | 20VDC | 8.9/32VDC | 2 form C (2 CO) | Single | Plug-in/solder | Dust protected 7-1393806-9 |
| V23154-C0720-C104 | Standard, size I | 20VDC | 11.9/32VDC | 2 form C (2 CO) | Bifurcated | Plug-in/solder | Dust protected 8-1393806-1 |
| V23154-C0421-B104 | Standard, size I | 24VDC | 11.2/36VDC | 2 form C (2 CO) | Single | Plug-in/solder | Dust protected 1-1393806-1 |
| V23154-C0721-B104 | Standard, size I | 24VDC | 11/40VDC | 2 form C (2 CO) | Single | Plug-in/solder | Dust protected 8-1393806-6 |
| V23154-C0721-B604 | Standard, size I | 24VDC | 11/40VDC | 2 form C (2 CO) | Single | Plug-in/solder | Dust protected 8-1393806-7 |
| V23154-C0721-C104 | Standard, size I | 24VDC | 14.5/40VDC | 2 form C (2 CO) | Bifurcated | Plug-in/solder | Dust protected 8-1393806-8 |
| V23154-C0721-C404 | Standard, size I | 24VDC | 14.5/40VDC | 2 form C (2 CO) | Bifurcated | Plug-in/solder | Dust protected 8-1393806-9 |
| V23154-C0496-C104 | Standard, size I | 25VDC | 20.8/36.3VDC | 2 form C (2 CO) | Bifurcated | Plug-in/solder | Dust protected 2-1393806-5 |
| V23154-C0722-B104 | Standard, size I | 32VDC | 16.9/54VDC | 2 form C (2 CO) | Single | Plug-in/solder | Dust protected 9-1393806-4 |
| V23154-C0722-B604 | Standard, size I | 32VDC | 16.9/54VDC | 2 form C (2 CO) | Single | Plug-in/solder | Dust protected 9-1393806-5 |
| V23154-C0722-C104 | Standard, size I | 32VDC | 22.6/54VDC | 2 form C (2 CO) | Bifurcated | Plug-in/solder | Dust protected 9-1393806-7 |
| V23154-C0722-C404 | Standard, size I | 32VDC | 22.6/54VDC | 2 form C (2 CO) | Bifurcated | Plug-in/solder | Dust protected 9-1393806-8 |
| V23154-C0726-B104 | Standard, size I | 48VDC | 23/75VDC | 2 form C (2 CO) | Single | Plug-in/solder | Dust protected 1393807-6 |
| V23154-C0726-B604 | Standard, size I | 48VDC | 23/75VDC | 2 form C (2 CO) | Single | Plug-in/solder | Dust protected 1393807-7 |
| V23154-C0726-C104 | Standard, size I | 48VDC | 30/75VDC | 2 form C (2 CO) | Bifurcated | Plug-in/solder | Dust protected 1393807-8 |
| V23154-C0726-C404 | Standard, size I | 48VDC | 30/75VDC | 2 form C (2 CO) | Bifurcated | Plug-in/solder | Dust protected 1393807-9 |
| V23154-C0734-B104 | Standard, size I | 60VDC | 27/92VDC | 2 form C (2 CO) | Single | Plug-in/solder | Dust protected 1-1393807-4 |
| V23154-C0404-B104 | Standard, size I | 72VDC | 36/100VDC | 2 form C (2 CO) | Single | Plug-in/solder | Dust protected 1393806-2 |
| V23154-C0704-B104 | Standard, size I | 72VDC | 36.2/114VDC | 2 form C (2 CO) | Single | Plug-in/solder | Dust protected 4-1393806-3 |
| V23154-C0704-B604 | Standard, size I | 72VDC | 36.2/114VDC | 2 form C (2 CO) | Single | Plug-in/solder | Dust protected 4-1393806-5 |
| V23154-C0704-C104 | Standard, size I | 72VDC | 48.4/114VDC | 2 form C (2 CO) | Bifurcated | Plug-in/solder | Dust protected 4-1393806-6 |
| V23154-C0704-C404 | Standard, size I | 72VDC | 48.4/114VDC | 2 form C (2 CO) | Bifurcated | Plug-in/solder | Dust protected 4-1393806-7 |
| V23154-C0735-B104 | Standard, size I | 110VDC | 49/164VDC | 2 form C (2 CO) | Single | Plug-in/solder | Dust protected 1-1393807-6 |
| V23154-C0703-B104 | Standard, size I | 125VDC | 61/190VDC | 2 form C (2 CO) | Single | Plug-in/solder | Dust protected 3-1393806-6 |

Cradle N Relay V23154/V23162 (Continued)

| Product code | Version | Coil | Operate/Lim.Arrangement | Contacts | Terminals | Enclosure | PartNumber |
|---------------------------------------|-------------------|---------|-------------------------|-----------------|------------|----------------|----------------------------|
| V23154-C0XX, 5A, size I | | | | | | | |
| V23154-C0702-F106 | 5A, size I | 1.1VDC | 0.4/1.7VDC | 1A+1B (1N0+1NC) | Single | Plug-in/solder | Dust protected 3-1393806-4 |
| V23154-C0712-F105 | 5A, size I | 7VDC | 2.7/10.5VDC | 2 form A (2 NO) | Single | Plug-in/solder | Dust protected 5-1393806-7 |
| V23154-C0712-F106 | 5A, size I | 7VDC | 2.7/10.5VDC | 1A+1B (1N0+1NC) | Single | Plug-in/solder | Dust protected 5-1393806-8 |
| V23154-C0XX, 5A, size I | | | | | | | |
| V23154-C0715-F105 | 5A, size I | 9VDC | 3.9/14VDC | 2 form A (2 NO) | Single | Plug-in/solder | Dust protected 6-1393806-3 |
| V23154-C0717-F105 | 5A, size I | 12VDC | 7.1/20VDC | 2 form A (2 NO) | Single | Plug-in/solder | Dust protected 6-1393806-9 |
| V23154-C0717-F106 | 5A, size I | 12VDC | 7.1/20VDC | 1A+1B (1N0+1NC) | Single | Plug-in/solder | Dust protected 7-1393806-0 |
| V23154-C0719-F105 | 5A, size I | 14.5VDC | 6.6/24VDC | 2 form A (2 NO) | Single | Plug-in/solder | Dust protected 7-1393806-5 |
| V23154-C0720-F105 | 5A, size I | 19VDC | 8.2/31VDC | 2 form A (2 NO) | Single | Plug-in/solder | Dust protected 8-1393806-2 |
| V23154-C0720-F106 | 5A, size I | 19VDC | 8.2/31VDC | 1A+1B (1N0+1NC) | Single | Plug-in/solder | Dust protected 8-1393806-3 |
| V23154-C0421-F105 | 5A, size I | 24VDC | 15/36VDC | 2 form A (2 NO) | Single | Plug-in/solder | Dust protected 1-1393806-3 |
| V23154-C0721-F105 | 5A, size I | 24VDC | 11/40VDC | 2 form A (2 NO) | Single | Plug-in/solder | Dust protected 9-1393806-1 |
| V23154-C0721-F106 | 5A, size I | 24VDC | 11/40VDC | 1A+1B (1N0+1NC) | Single | Plug-in/solder | Dust protected 9-1393806-2 |
| V23154-C0722-F105 | 5A, size I | 33VDC | 16/54VDC | 2 form A (2 NO) | Single | Plug-in/solder | Dust protected 1393807-2 |
| V23154-C0722-F106 | 5A, size I | 33VDC | 16/54VDC | 1A+1B (1N0+1NC) | Single | Plug-in/solder | Dust protected 1393807-3 |
| V23154-C0726-F105 | 5A, size I | 48VDC | 23/75VDC | 2 form A (2 NO) | Single | Plug-in/solder | Dust protected 1-1393807-1 |
| V23154-C0726-F106 | 5A, size I | 48VDC | 30/75VDC | 1A+1B (1N0+1NC) | Single | Plug-in/solder | Dust protected 1-1393807-2 |
| V23154-C0734-F106 | 5A, size I | 60VDC | 27/92VDC | 1A+1B (1N0+1NC) | Single | Plug-in/solder | Dust protected 1-1393807-5 |
| V23154-C0704-F105 | 5A, size I | 72VDC | 36.2/114VDC | 2 form A (2 NO) | Single | Plug-in/solder | Dust protected 4-1393806-8 |
| V23154-C0704-F106 | 5A, size I | 72VDC | 36.2/114VDC | 1A+1B (1N0+1NC) | Single | Plug-in/solder | Dust protected 1413000-2 |
| V23154-C0735-F106 | 5A, size I | 110VDC | 49/164VDC | 1A+1B (1N0+1NC) | Single | Plug-in/solder | Dust protected 1-1393807-7 |
| V23154-C0703-F106 | 5A, size I | 125VDC | 61/190VDC | 1A+1B (1N0+1NC) | Single | Plug-in/solder | Dust protected 4-1393806-0 |
| V23154-D0XX, standard, size II | | | | | | | |
| V23154-D0711-B110 | Standard, size II | 5VDC | 2.5/7.2VDC | 4 form C (4 CO) | Single | Plug-in/solder | Dust protected 2-1393808-8 |
| V23154-D0711-C110 | Standard, size II | 5VDC | 3/7.2VDC | 4 form C (4 CO) | Bifurcated | Plug-in/solder | Dust protected 3-1393808-0 |
| V23154-D0711-C410 | Standard, size II | 5VDC | 3/7.2VDC | 4 form C (4 CO) | Bifurcated | Plug-in/solder | Dust protected 3-1393808-1 |
| V23154-D0712-B110 | Standard, size II | 7VDC | 3.6/10.5VDC | 4 form C (4 CO) | Single | Plug-in/solder | Dust protected 3-1393808-3 |
| V23154-D0712-B610 | Standard, size II | 7VDC | 3.6/10.5VDC | 4 form C (4 CO) | Single | Plug-in/solder | Dust protected 3-1393808-4 |
| V23154-D0712-C110 | Standard, size II | 7VDC | 4.4/10.5VDC | 4 form C (4 CO) | Bifurcated | Plug-in/solder | Dust protected 3-1393808-5 |
| V23154-D0715-B110 | Standard, size II | 8.5VDC | 4.8/14VDC | 4 form C (4 CO) | Single | Plug-in/solder | Dust protected 3-1393808-8 |
| V23154-D0715-B610 | Standard, size II | 8.5VDC | 4.8/14VDC | 4 form C (4 CO) | Single | Plug-in/solder | Dust protected 3-1393808-9 |
| V23154-D0715-C110 | Standard, size II | 8.5VDC | 5.8/14VDC | 4 form C (4 CO) | Bifurcated | Plug-in/solder | Dust protected 4-1393808-0 |
| V23154-D0716-B110 | Standard, size II | 10VDC | 5.8/16.5VDC | 4 form C (4 CO) | Single | Plug-in/solder | Dust protected 4-1393808-3 |
| V23154-D0716-B610 | Standard, size II | 10VDC | 5.8/16.5VDC | 4 form C (4 CO) | Single | Plug-in/solder | Dust protected 4-1393808-5 |
| V23154-D0716-C110 | Standard, size II | 10VDC | 7.1/16.5VDC | 4 form C (4 CO) | Bifurcated | Plug-in/solder | Dust protected 4-1393808-6 |
| V23154-D0418-B110 | Standard, size II | 12VDC | 8.8/20.5VDC | 4 form C (4 CO) | Single | Plug-in/solder | Dust protected 3-1393807-0 |
| V23154-D0717-B110 | Standard, size II | 12VDC | 7.1/20VDC | 4 form C (4 CO) | Single | Plug-in/solder | Dust protected 4-1393808-9 |
| V23154-D0717-B112 | Standard, size II | 12VDC | 7.1/20VDC | 6 form A (6 NO) | Single | Plug-in/solder | Dust protected 5-1393808-0 |
| V23154-D0717-B610 | Standard, size II | 12VDC | 7.1/20VDC | 4 form C (4 CO) | Single | Plug-in/solder | Dust protected 8-1422029-2 |
| V23154-D0717-C110 | Standard, size II | 12VDC | 10.5/20VDC | 4 form C (4 CO) | Bifurcated | Plug-in/solder | Dust protected 5-1393808-3 |
| V23154-D0719-B110 | Standard, size II | 15VDC | 9.1/24.5VDC | 4 form C (4 CO) | Single | Plug-in/solder | Dust protected 5-1393808-6 |
| V23154-D0719-B112 | Standard, size II | 15VDC | 9.1/24.5VDC | 6 form A (6 NO) | Single | Plug-in/solder | Dust protected 5-1393808-7 |
| V23154-D0719-B610 | Standard, size II | 15VDC | 9.1/24.5VDC | 4 form C (4 CO) | Single | Plug-in/solder | Dust protected 6-1393808-1 |
| V23154-D0719-C110 | Standard, size II | 15VDC | 11/24.5VDC | 4 form C (4 CO) | Bifurcated | Plug-in/solder | Dust protected 1413000-3 |
| V23154-D0479-B110 | Standard, size II | 16VDC | 15.2/27VDC | 4 form C (4 CO) | Single | Plug-in/solder | Dust protected 7-1393807-5 |
| V23154-D0XX, standard, size II | | | | | | | |
| V23154-D0479-C110 | Standard, size II | 16VDC | 18.9/27VDC | 4 form C (4 CO) | Bifurcated | Plug-in/solder | Dust protected 7-1393807-8 |
| V23154-D0720-B110 | Standard, size II | 20VDC | 11.9/32VDC | 4 form C (4 CO) | Single | Plug-in/solder | Dust protected 6-1393808-5 |
| V23154-D0720-B112 | Standard, size II | 20VDC | 11.9/32VDC | 6 form A (6 NO) | Single | Plug-in/solder | Dust protected 6-1393808-6 |
| V23154-D0720-B610 | Standard, size II | 20VDC | 11.9/32VDC | 4 form C (4 CO) | Single | Plug-in/solder | Dust protected 6-1393808-9 |
| V23154-D0720-C110 | Standard, size II | 20VDC | 14.4/32VDC | 4 form C (4 CO) | Bifurcated | Plug-in/solder | Dust protected 7-1393808-0 |
| V23154-D0720-C112 | Standard, size II | 20VDC | 14.4/32VDC | 6 form A (6 NO) | Bifurcated | Plug-in/solder | Dust protected 7-1393808-1 |
| V23154-D0720-C410 | Standard, size II | 20VDC | 14.4/32VDC | 4 form C (4 CO) | Bifurcated | Plug-in/solder | Dust protected 7-1393808-3 |
| V23154-D0421-B110 | Standard, size II | 24VDC | 15/36VDC | 4 form C (4 CO) | Single | Plug-in/solder | Dust protected 3-1393807-7 |
| V23154-D0421-B612 | Standard, size II | 24VDC | 15/36VDC | 6 form A (6 NO) | Single | Plug-in/solder | Dust protected 4-1393807-1 |
| V23154-D0421-C110 | Standard, size II | 24VDC | 18.2/36VDC | 4 form C (4 CO) | Bifurcated | Plug-in/solder | Dust protected 4-1393807-2 |
| V23154-D0421-C410 | Standard, size II | 24VDC | 18.2/36VDC | 4 form C (4 CO) | Bifurcated | Plug-in/solder | Dust protected 4-1393807-3 |
| V23154-D0721-B110 | Standard, size II | 24VDC | 14.5/40VDC | 4 form C (4 CO) | Single | Plug-in/solder | Dust protected 8-1393808-3 |
| V23154-D0721-B112 | Standard, size II | 24VDC | 14.5/40VDC | 6 form A (6 NO) | Single | Plug-in/solder | Dust protected 8-1393808-4 |
| V23154-D0721-B610 | Standard, size II | 24VDC | 14.5/40VDC | 4 form C (4 CO) | Single | Plug-in/solder | Dust protected 9-1393808-2 |
| V23154-D0721-B612 | Standard, size II | 24VDC | 14.5/40VDC | 6 form A (6 NO) | Single | Plug-in/solder | Dust protected 9-1393808-3 |
| V23154-D0721-C110 | Standard, size II | 24VDC | 22/40VDC | 4 form C (4 CO) | Bifurcated | Plug-in/solder | Dust protected 9-1393808-5 |
| V23154-D0721-C112 | Standard, size II | 24VDC | 18/40VDC | 6 form A (6 NO) | Bifurcated | Plug-in/solder | Dust protected 9-1393808-6 |
| V23154-D0721-C410 | Standard, size II | 24VDC | 18/40VDC | 4 form C (4 CO) | Bifurcated | Plug-in/solder | Dust protected 9-1393808-9 |
| V23154-D0496-B110 | Standard, size II | 25VDC | 20.8/36.3VDC | 4 form C (4 CO) | Single | Plug-in/solder | Dust protected 8-1393807-2 |
| V23154-D0496-B112 | Standard, size II | 25VDC | 20.8/36.3VDC | 6 form A (6 NO) | Single | Plug-in/solder | Dust protected 8-1393807-3 |
| V23154-D0722-B110 | Standard, size II | 32VDC | 22.6/54VDC | 4 form C (4 CO) | Single | Plug-in/solder | Dust protected 1-1393809-4 |
| V23154-D0722-B112 | Standard, size II | 32VDC | 22.6/54VDC | 6 form A (6 NO) | Single | Plug-in/solder | Dust protected 1-1393809-5 |
| V23154-D0722-B610 | Standard, size II | 32VDC | 22.6/54VDC | 4 form C (4 CO) | Single | Plug-in/solder | Dust protected 2-1393809-1 |
| V23154-D0722-C110 | Standard, size II | 32VDC | 33.8/54VDC | 4 form C (4 CO) | Bifurcated | Plug-in/solder | Dust protected 2-1393809-2 |
| V23154-D0722-C410 | Standard, size II | 32VDC | 33.8/54VDC | 4 form C (4 CO) | Bifurcated | Plug-in/solder | Dust protected 2-1393809-3 |
| V23154-D0726-B110 | Standard, size II | 48VDC | 30/75VDC | 4 form C (4 CO) | Single | Plug-in/solder | Dust protected 3-1393809-2 |
| V23154-D0726-B112 | Standard, size II | 48VDC | 30/75VDC | 6 form A (6 NO) | Single | Plug-in/solder | Dust protected 3-1393809-4 |
| V23154-D0726-B610 | Standard, size II | 48VDC | 30/75VDC | 4 form C (4 CO) | Single | Plug-in/solder | Dust protected 3-1393809-8 |

Cradle N Relay V23154/V23162 (Continued)

| Product code | Version | Coil | Operate/Lim.Arrangement | Contacts | Terminals | Enclosure | PartNumber |
|---------------------------------------|-------------------|--------|-------------------------|-----------------|------------|----------------|----------------------------|
| V23154-D0XX, standard, size II | | | | | | | |
| V23154-D0726-C110 | Standard, size II | 48VDC | 45/75VDC | 4 form C (4 CO) | Bifurcated | Plug-in/solder | Dust protected 3-1393809-9 |
| V23154-D0726-C112 | Standard, size II | 48VDC | 37/75VDC | 6 form A (6 NO) | Bifurcated | Plug-in/solder | Dust protected 4-1393809-0 |
| V23154-D0726-C410 | Standard, size II | 48VDC | 37/75VDC | 4 form C (4 CO) | Bifurcated | Plug-in/solder | Dust protected 4-1393809-2 |
| V23154-D0734-B110 | Standard, size II | 60VDC | 36/92VDC | 4 form C (4 CO) | Single | Plug-in/solder | Dust protected 5-1393809-6 |
| V23154-D0734-B610 | Standard, size II | 60VDC | 36/92VDC | 4 form C (4 CO) | Single | Plug-in/solder | Dust protected 5-1393809-7 |
| V23154-D0734-C410 | Standard, size II | 60VDC | 43/92VDC | 4 form C (4 CO) | Bifurcated | Plug-in/solder | Dust protected 5-1393809-8 |
| V23154-D0404-B110 | Standard, size II | 72VDC | 48/100VDC | 4 form C (4 CO) | Single | Plug-in/solder | Dust protected 1-1393807-8 |
| V23154-D0404-B112 | Standard, size II | 72VDC | 48/100VDC | 6 form A (6 NO) | Single | Plug-in/solder | Dust protected 1-1393807-9 |
| V23154-D0404-B610 | Standard, size II | 72VDC | 48/100VDC | 4 form C (4 CO) | Single | Plug-in/solder | Dust protected 2-1393807-1 |
| V23154-D0704-B110 | Standard, size II | 72VDC | 48.4/114VDC | 4 form C (4 CO) | Single | Plug-in/solder | Dust protected 1-1393808-6 |
| V23154-D0704-B112 | Standard, size II | 72VDC | 48.4/114VDC | 6 form A (6 NO) | Single | Plug-in/solder | Dust protected 1393808-8 |
| V23154-D0704-C110 | Standard, size II | 72VDC | 58.7/114VDC | 4 form C (4 CO) | Bifurcated | Plug-in/solder | Dust protected 1-1393808-6 |
| V23154-D0704-C112 | Standard, size II | 72VDC | 58.7/114VDC | 6 form A (6 NO) | Bifurcated | Plug-in/solder | Dust protected 1-1393808-7 |
| V23154-D0735-B110 | Standard, size II | 110VDC | 65/164VDC | 4 form C (4 CO) | Single | Plug-in/solder | Dust protected 6-1393809-2 |
| V23154-D0735-B610 | Standard, size II | 110VDC | 65/164VDC | 4 form C (4 CO) | Single | Plug-in/solder | Dust protected 6-1393809-4 |
| V23154-D0703-B110 | Standard, size II | 125VDC | 81/190VDC | 4 form C (4 CO) | Single | Plug-in/solder | Dust protected 1393808-1 |
| V23154-D0XX, 5A, size | | | | | | | |
| V23154-D0711-F104 | 5A, size II | 5VDC | 1.8/7.2VDC | 2 form C (2 CO) | Single | Plug-in/solder | Dust protected 3-1393808-2 |
| V23154-C0712-B104 | 5A, size II | 7VDC | 3.6/10.5VDC | 2 form C (2 CO) | Single | Plug-in/solder | Dust protected 3-1393808-6 |
| V23154-D0418-F104 | 5A, size II | 12VDC | 6.6/20.5VDC | 2 form C (2 CO) | Single | Plug-in/solder | Dust protected 3-1393807-1 |
| V23154-D0717-F104 | 5A, size II | 12VDC | 7.1/20VDC | 2 form C (2 CO) | Single | Plug-in/solder | Dust protected 5-1393808-4 |
| V23154-D0719-F104 | 5A, size II | 15VDC | 6.8/24.5VDC | 2 form C (2 CO) | Single | Plug-in/solder | Dust protected 6-1393808-2 |
| V23154-D0720-F104 | 5A, size II | 20VDC | 11.9/32VDC | 2 form C (2 CO) | Single | Plug-in/solder | Dust protected 7-1393808-6 |
| V23154-D0421-F104 | 5A, size II | 24VDC | 15/36VDC | 2 form C (2 CO) | Single | Plug-in/solder | Dust protected 4-1393807-4 |
| V23154-D0721-F104 | 5A, size II | 24VDC | 11/40VDC | 2 form C (2 CO) | Single | Plug-in/solder | Dust protected 1393809-1 |
| V23154-D0722-F104 | 5A, size II | 32VDC | 22.6/54VDC | 2 form C (2 CO) | Single | Plug-in/solder | Dust protected 2-1393809-4 |
| V23154-D0726-F104 | 5A, size II | 48VDC | 30/75VDC | 2 form C (2 CO) | Single | Plug-in/solder | Dust protected 4-1393809-4 |
| V23154-D0734-F104 | 5A, size II | 60VDC | 27/92VDC | 2 form C (2 CO) | Single | Plug-in/solder | Dust protected 6-1393809-0 |
| V23154-D0404-F104 | 5A, size II | 72VDC | 36/100VDC | 2 form C (2 CO) | Single | Plug-in/solder | Dust protected 2-1393807-2 |
| V23154-D0704-F104 | 5A, size II | 72VDC | 48.4/114VDC | 2 form C (2 CO) | Single | Plug-in/solder | Dust protected 1-1393808-9 |
| V23154-D0735-F104 | 5A, size II | 110VDC | 65/164VDC | 2 form C (2 CO) | Single | Plug-in/solder | Dust protected 6-1393809-5 |
| V23154-D0703-F104 | 5A, size II | 125VDC | 81/190VDC | 2 form C (2 CO) | Single | Plug-in/solder | Dust protected 1393808-4 |
| V23154-M0XX, standard, size I | | | | | | | |
| V23154-M0712-B104 | Standard, size I | 7VDC | 2.7/10.5VDC | 2 form C (2 CO) | Single | PCB, earth t. | Dust protected 1-1393810-8 |
| V23154-M0717-B104 | Standard, size I | 12VDC | 5.3/20VDC | 2 form C (2 CO) | Single | PCB, earth t. | Dust protected 2-1393810-1 |
| V23154-M0717-C104 | Standard, size I | 12VDC | 7.1/20VDC | 2 form C (2 CO) | Bifurcated | PCB, earth t. | Dust protected 2-1393810-2 |
| V23154-M0719-B104 | Standard, size I | 15VDC | 6.8/24.5VDC | 2 form C (2 CO) | Single | PCB, earth t. | Dust protected 2-1393810-3 |
| V23154-M0719-C104 | Standard, size I | 15VDC | 9.1/24.5VDC | 2 form C (2 CO) | Bifurcated | PCB, earth t. | Dust protected 2-1393810-4 |
| V23154-M0XX, standard, size I | | | | | | | |
| V23154-M0720-B104 | Standard, size I | 20VDC | 8.9/32VDC | 2 form C (2 CO) | Single | PCB, earth t. | Dust protected 2-1393810-5 |
| V23154-M0720-B604 | Standard, size I | 20VDC | 8.9/32VDC | 2 form C (2 CO) | Single | PCB, earth t. | Dust protected 2-1393810-6 |
| V23154-M0721-B104 | Standard, size I | 24VDC | 11/40VDC | 2 form C (2 CO) | Single | PCB, earth t. | Dust protected 2-1393810-7 |
| V23154-M0721-B604 | Standard, size I | 24VDC | 11/40VDC | 2 form C (2 CO) | Single | PCB, earth t. | Dust protected 2-1393810-9 |
| V23154-M0721-C104 | Standard, size I | 24VDC | 14.5/40VDC | 2 form C (2 CO) | Bifurcated | PCB, earth t. | Dust protected 3-1393810-0 |
| V23154-M0722-B104 | Standard, size I | 32VDC | 16.9/54VDC | 2 form C (2 CO) | Single | PCB, earth t. | Dust protected 3-1393810-4 |
| V23154-M0722-B604 | Standard, size I | 32VDC | 16.9/54VDC | 2 form C (2 CO) | Single | PCB, earth t. | Dust protected 3-1393810-5 |
| V23154-M0722-C104 | Standard, size I | 33VDC | 22.6/54VDC | 2 form C (2 CO) | Bifurcated | PCB, earth t. | Dust protected 2-1419172-5 |
| V23154-M0722-C404 | Standard, size I | 33VDC | 22.6/54VDC | 2 form C (2 CO) | Bifurcated | PCB, earth t. | Dust protected 3-1393810-6 |
| V23154-M0726-B104 | Standard, size I | 48VDC | 23/75VDC | 2 form C (2 CO) | Single | PCB, earth t. | Dust protected 3-1393810-8 |
| V23154-M0726-C104 | Standard, size I | 48VDC | 30/75VDC | 2 form C (2 CO) | Bifurcated | PCB, earth t. | Dust protected 4-1393810-0 |
| V23154-M0704-B104 | Standard, size I | 72VDC | 36.2/114VDC | 2 form C (2 CO) | Single | PCB, earth t. | Dust protected 1-1393810-5 |
| V23154-M0703-B104 | Standard, size I | 125VDC | 61/190VDC | 2 form C (2 CO) | Single | PCB, earth t. | Dust protected 1-1393810-4 |
| V23154-M0XX, 5A, size I | | | | | | | |
| V23154-M0720-F105 | 5A, size I | 19VDC | 8.2/31VDC | 2 form A (2 NO) | Single | PCB, earth t. | Dust protected 2-1422030-5 |
| V23154-M0721-F105 | 5A, size I | 24VDC | 11/40VDC | 2 form A (2 NO) | Single | PCB, earth t. | Dust protected 3-1393810-2 |
| V23154-M0721-F106 | 5A, size I | 24VDC | 11/40VDC | 1A+1B | Single | PCB, earth t. | Dust protected 3-1393810-3 |
| V23154-M0722-F106 | 5A, size I | 33VDC | 16/54VDC | 1A+1B | Single | PCB, earth t. | Dust protected 3-1393810-7 |
| V23154-M0726-F106 | 5A, size I | 48VDC | 23/75VDC | 1A+1B | Single | PCB, earth t. | Dust protected 4-1393810-1 |
| V23154-M4XX, standard, size I | | | | | | | |
| V23154-M4717-C104 | Standard, size I | 12VDC | 7.1/20VDC | 2 form C (2 CO) | Bifurcated | PCB | Dust protected 4-1393810-5 |
| V23154-M4719-C104 | Standard, size I | 15VDC | 9.1/24.5VDC | 2 form C (2 CO) | Bifurcated | PCB | Dust protected 4-1393810-6 |
| V23154-M4721-C104 | Standard, size I | 24VDC | 14.5/40VDC | 2 form C (2 CO) | Bifurcated | PCB | Dust protected 4-1393810-7 |
| V23154-M4XX, 5A, size I | | | | | | | |
| V23154-M4721-F106 | 5A, size I | 24VDC | 11/40VDC | 1A+1B | Single | PCB | Dust protected 2-1422030-4 |

Cradle N Relay V23154/V23162 (Continued)

| Product code | Version | Coil | Operate/Lim.Arrangement | Contacts | Terminals | Enclosure | PartNumber |
|---------------------------------------|-------------------|--------|-------------------------|-----------------|------------|---------------|----------------------------|
| V23154-N0XX, standard, size II | | | | | | | |
| V23154-N0712-B110 | Standard, size II | 7VDC | 3.6/10.5VDC | 4 form C (4 CO) | Single | PCB, earth t. | Dust protected 5-1393810-4 |
| V23154-N0716-C110 | Standard, size II | 10VDC | 7.1/16.5VDC | 4 form C (4 CO) | Bifurcated | PCB, earth t. | Dust protected 5-1393810-8 |
| V23154-N0717-B110 | Standard, size II | 12VDC | 7.1/20VDC | 4 form C (4 CO) | Single | PCB, earth t. | Dust protected 5-1393810-9 |
| V23154-N0719-B110 | Standard, size II | 15VDC | 9.1/24.5VDC | 4 form C (4 CO) | Single | PCB, earth t. | Dust protected 6-1393810-3 |
| V23154-N0720-B110 | Standard, size II | 20VDC | 11.9/32VDC | 4 form C (4 CO) | Single | PCB, earth t. | Dust protected 6-1393810-4 |
| V23154-N0720-B610 | Standard, size II | 20VDC | 11.9/32VDC | 4 form C (4 CO) | Single | PCB, earth t. | Dust protected 6-1393810-5 |
| V23154-N0720-C110 | Standard, size II | 20VDC | 17.7/32VDC | 4 form C (4 CO) | Bifurcated | PCB, earth t. | Dust protected 6-1393810-6 |
| V23154-N0720-C112 | Standard, size II | 20VDC | 14.4/32VDC | 6 form A (6 NO) | Bifurcated | PCB, earth t. | Dust protected 6-1393810-7 |
| V23154-N0720-C410 | Standard, size II | 20VDC | 17.7/32VDC | 4 form C (4 CO) | Bifurcated | PCB, earth t. | Dust protected 6-1393810-8 |
| V23154-N0721-B110 | Standard, size II | 24VDC | 14.5/40VDC | 4 form C (4 CO) | Single | PCB, earth t. | Dust protected 7-1393810-0 |
| V23154-N0721-B112 | Standard, size II | 24VDC | 14.5/40VDC | 6 form A (6 NO) | Single | PCB, earth t. | Dust protected 7-1393810-1 |
| V23154-N0721-B610 | Standard, size II | 24VDC | 14.5/40VDC | 4 form C (4 CO) | Single | PCB, earth t. | Dust protected 7-1393810-2 |
| V23154-N0721-C110 | Standard, size II | 24VDC | 22/40VDC | 4 form C (4 CO) | Bifurcated | PCB, earth t. | Dust protected 7-1393810-3 |
| V23154-N0722-B110 | Standard, size II | 32VDC | 22.6/54VDC | 4 form C (4 CO) | Single | PCB, earth t. | Dust protected 7-1393810-6 |
| V23154-N0722-C110 | Standard, size II | 32VDC | 33.8/54VDC | 4 form C (4 CO) | Bifurcated | PCB, earth t. | Dust protected 7-1393810-7 |
| V23154-N0722-C112 | Standard, size II | 32VDC | 27.4/54VDC | 6 form A (6 NO) | Bifurcated | PCB, earth t. | Dust protected 7-1393810-8 |
| V23154-N0726-B110 | Standard, size II | 48VDC | 30/75VDC | 4 form C (4 CO) | Single | PCB, earth t. | Dust protected 8-1393810-0 |
| V23154-N0726-C110 | Standard, size II | 48VDC | 45/75VDC | 4 form C (4 CO) | Bifurcated | PCB, earth t. | Dust protected 8-1393810-2 |
| V23154-N0734-B110 | Standard, size II | 60VDC | 36/92VDC | 4 form C (4 CO) | Single | PCB, earth t. | Dust protected 8-1393810-9 |
| V23154-N0404-B110 | Standard, size II | 72VDC | 48/100VDC | 4 form C (4 CO) | Single | PCB | Dust protected 4-1393810-8 |
| V23154-N0XX, 5A, size II | | | | | | | |
| V23154-N0717-F104 | 5A, size II | 12VDC | 5.3/20VDC | 2 form C (2 CO) | Single | PCB, earth t. | Dust protected 6-1393810-1 |
| V23154-N0720-F104 | 5A, size II | 20VDC | 8.9/32VDC | 2 form C (2 CO) | Single | PCB, earth t. | Dust protected 6-1393810-9 |
| V23154-N0721-F104 | 5A, size II | 24VDC | 11/40VDC | 2 form C (2 CO) | Single | PCB, earth t. | Dust protected 7-1393810-5 |
| V23154-N0722-F104 | 5A, size II | 32VDC | 16.9/54VDC | 2 form C (2 CO) | Single | PCB, earth t. | Dust protected 7-1393810-9 |
| V23154-N0726-F104 | 5A, size II | 48VDC | 23/75VDC | 2 form C (2 CO) | Single | PCB, earth t. | Dust protected 8-1393810-7 |
| V23154-N0734-F104 | 5A, size II | 60VDC | 27/92VDC | 2 form C (2 CO) | Single | PCB, earth t. | Dust protected 9-1393810-0 |
| V23154-N0704-F104 | 5A, size II | 72VDC | 36.2/114VDC | 2 form C (2 CO) | Single | PCB, earth t. | Dust protected 1422030-1 |
| V23154-N0703-F104 | 5A, size II | 125VDC | 61/190VDC | 2 form C (2 CO) | Single | PCB, earth t. | Dust protected 5-1393810-1 |
| V23154-N4XX, standard, size II | | | | | | | |
| V23154-N4716-C110 | Standard, size II | 10VDC | 9/16.5VDC | 4 form C (4 CO) | Bifurcated | PCB | Dust protected 1393811-1 |
| V23154-N4720-B110 | Standard, size II | 20VDC | 11.9/32VDC | 4 form C (4 CO) | Single | PCB | Dust protected 1393811-2 |
| V23154-N4721-C110 | Standard, size II | 24VDC | 22/40VDC | 4 form C (4 CO) | Bifurcated | PCB | Dust protected 1393811-7 |
| V23154-N4726-B110 | Standard, size II | 48VDC | 30/75VDC | 4 form C (4 CO) | Single | PCB | Dust protected 1-1393811-0 |
| V23154-N4734-B110 | Standard, size II | 60VDC | 36/92VDC | 4 form C (4 CO) | Single | PCB | Dust protected 1-1393811-1 |
| V23154-N4XX, 5A, size II | | | | | | | |
| V23154-N4721-F104 | 5A, size II | 24VDC | 11/40VDC | 2 form C (2 CO) | Single | PCB | Dust protected 1393811-8 |
| V23154-N4734-F104 | 5A, size II | 60VDC | 27/92VDC | 2 form C (2 CO) | Single | PCB | Dust protected 1-1393811-2 |
| V23154-N4735-F104 | 5A, size II | 110VDC | 49/164VDC | 2 form C (2 CO) | Single | PCB | Dust protected 1-1393811-3 |
| V23162-A0XX, standard, size I | | | | | | | |
| V23162-A0711-B104 | Standard, size I | 5VDC | 1.8/7.2VDC | 2 form C (2 CO) | Single | Solder | Hermet. sealed 2-1393818-5 |
| V23162-A0717-B104 | Standard, size I | 12VDC | 5.3/20VDC | 2 form C (2 CO) | Single | Solder | Hermet. sealed 2-1393818-8 |
| V23162-A0717-B604 | Standard, size I | 12VDC | 5.3/20VDC | 2 form C (2 CO) | Single | Solder | Hermet. sealed 2-1393818-9 |
| V23162-A0719-B104 | Standard, size I | 15VDC | 6.8/24.5VDC | 2 form C (2 CO) | Single | Solder | Hermet. sealed 3-1393818-2 |
| V23162-A0720-B104 | Standard, size I | 20VDC | 8.9/32VDC | 2 form C (2 CO) | Single | Solder | Hermet. sealed 3-1393818-3 |
| V23162-A0720-B604 | Standard, size I | 20VDC | 8.9/32VDC | 2 form C (2 CO) | Single | Solder | Hermet. sealed 3-1393818-4 |
| V23162-A0720-C104 | Standard, size I | 20VDC | 11.9/32VDC | 2 form C (2 CO) | Bifurcated | Solder | Hermet. sealed 3-1393818-5 |
| V23162-A0720-C404 | Standard, size I | 20VDC | 11.9/32VDC | 2 form C (2 CO) | Bifurcated | Solder | Hermet. sealed 3-1393818-6 |
| V23162-A0421-B104 | Standard, size I | 24VDC | 11.2/36VDC | 2 form C (2 CO) | Single | Solder | Hermet. sealed 1393818-6 |
| V23162-A0421-B604 | Standard, size I | 24VDC | 11.2/36VDC | 2 form C (2 CO) | Single | Solder | Hermet. sealed 1393818-7 |
| V23162-A0721-B104 | Standard, size I | 24VDC | 11/40VDC | 2 form C (2 CO) | Single | Solder | Hermet. sealed 3-1393818-7 |
| V23162-A0721-B604 | Standard, size I | 24VDC | 11/40VDC | 2 form C (2 CO) | Single | Solder | Hermet. sealed 3-1393818-8 |
| V23162-A0721-C104 | Standard, size I | 24VDC | 14.5/40VDC | 2 form C (2 CO) | Bifurcated | Solder | Hermet. sealed 4-1393818-0 |
| V23162-A0721-C404 | Standard, size I | 24VDC | 14.5/40VDC | 2 form C (2 CO) | Bifurcated | Solder | Hermet. sealed 4-1393818-1 |
| V23162-A0722-B104 | Standard, size I | 32VDC | 16.9/54VDC | 2 form C (2 CO) | Single | Solder | Hermet. sealed 4-1393818-6 |
| V23162-A0722-B604 | Standard, size I | 32VDC | 16.9/54VDC | 2 form C (2 CO) | Single | Solder | Hermet. sealed 4-1393818-7 |
| V23162-A0722-C104 | Standard, size I | 32VDC | 22.6/54VDC | 2 form C (2 CO) | Bifurcated | Solder | Hermet. sealed 4-1393818-8 |
| V23162-A0726-B104 | Standard, size I | 48VDC | 23/75VDC | 2 form C (2 CO) | Single | Solder | Hermet. sealed 5-1393818-1 |
| V23162-A0726-B604 | Standard, size I | 48VDC | 23/75VDC | 2 form C (2 CO) | Single | Solder | Hermet. sealed 5-1393818-2 |
| V23162-A0726-C404 | Standard, size I | 48VDC | 30/75VDC | 2 form C (2 CO) | Bifurcated | Solder | Hermet. sealed 5-1393818-3 |
| V23162-A0735-C104 | Standard, size I | 48VDC | 30/75VDC | 2 form C (2 CO) | Bifurcated | Solder | Hermet. sealed 5-1393818-5 |
| V23162-A0404-B104 | Standard, size I | 72VDC | 36/100VDC | 2 form C (2 CO) | Single | Solder | Hermet. sealed 1393818-1 |
| V23162-A0XX, standard, size I | | | | | | | |
| V23162-A0404-B604 | Standard, size I | 72VDC | 36/100VDC | 2 form C (2 CO) | Single | Solder | Hermet. sealed 1419147-6 |
| V23162-A0704-B104 | Standard, size I | 72VDC | 36.2/114VDC | 2 form C (2 CO) | Single | Solder | Hermet. sealed 1-1393818-9 |
| V23162-A0704-B604 | Standard, size I | 72VDC | 36.2/114VDC | 2 form C (2 CO) | Single | Solder | Hermet. sealed 2-1393818-0 |
| V23162-A0704-C404 | Standard, size I | 72VDC | 48.4/114VDC | 2 form C (2 CO) | Bifurcated | Solder | Hermet. sealed 2-1393818-2 |
| V23162-A0735-C404 | Standard, size I | 110VDC | 65/164VDC | 2 form C (2 CO) | Bifurcated | Solder | Hermet. sealed 5-1393818-6 |
| V23162-A0703-B104 | Standard, size I | 125VDC | 61/190VDC | 2 form C (2 CO) | Single | Solder | Hermet. sealed 1-1393818-6 |
| V23162-A0703-C404 | Standard, size I | 125VDC | 81/190VDC | 2 form C (2 CO) | Bifurcated | Solder | Hermet. sealed 1-1393818-7 |

Cradle N Relay V23154/V23162 (Continued)

| Product code | Version | Coil | Operate/Lim.Arrangement | Contacts | Terminals | Enclosure | PartNumber |
|---------------------------------------|-------------------|--------|-------------------------|-----------------|------------|----------------|----------------------------|
| V23162-A0XX, 5A, size I | | | | | | | |
| V23162-A0702-F106 | 5A, size I | 1.1VDC | 0.5/1.7VDC | 1A+1B | Single | Solder | Hermet. sealed 1-1393818-5 |
| V23162-A0717-F105 | 5A, size I | 12VDC | 5.3/20VDC | 2 form A (2 NO) | Single | Solder | Hermet. sealed 3-1393818-0 |
| V23162-A0717-F106 | 5A, size I | 12VDC | 7.1/20VDC | 1A+1B | Single | Solder | Hermet. sealed 3-1393818-1 |
| V23162-A0721-F105 | 5A, size I | 24VDC | 11/40VDC | 2 form A (2 NO) | Single | Solder | Hermet. sealed 4-1393818-3 |
| V23162-A0721-F106 | 5A, size I | 24VDC | 14.5/40VDC | 1A+1B | Single | Solder | Hermet. sealed 4-1393818-4 |
| V23162-A0722-F105 | 5A, size I | 33VDC | 16/54VDC | 2 form A (2 NO) | Single | Solder | Hermet. sealed 5-1393818-0 |
| V23162-A0726-F106 | 5A, size I | 48VDC | 30/75VDC | 1A+1B | Single | Solder | Hermet. sealed 5-1393818-4 |
| V23162-A0404-F106 | 5A, size I | 72VDC | 48/100VDC | 1A+1B | Single | Solder | Hermet. sealed 1393818-2 |
| V23162-A0704-F105 | 5A, size I | 72VDC | 36.2/114VDC | 2 form A (2 NO) | Single | Solder | Hermet. sealed 2-1393818-3 |
| V23162-A0704-F106 | 5A, size I | 72VDC | 48.4/114VDC | 1A+1B | Single | Solder | Hermet. sealed 2-1393818-4 |
| V23162-A0703-F106 | 5A, size I | 125VDC | 81/190VDC | 1A+1B | Single | Solder | Hermet. sealed 1-1393818-8 |
| V23162-B0XX, standard, size II | | | | | | | |
| V23162-B0712-B110 | Standard, size II | 7VDC | 3.6/10.5VDC | 4 form C (4 CO) | Single | Solder | Hermet. sealed 8-1393818-1 |
| V23162-B0715-C110 | Standard, size II | 8.5VDC | 7.6/14VDC | 4 form C (4 CO) | Bifurcated | Solder | Hermet. sealed 8-1393818-4 |
| V23162-B0716-B110 | Standard, size II | 10VDC | 5.8/16.5VDC | 4 form C (4 CO) | Single | Solder | Hermet. sealed 8-1393818-5 |
| V23162-B0717-B110 | Standard, size II | 12VDC | 7.1/20VDC | 4 form C (4 CO) | Single | Solder | Hermet. sealed 8-1393818-7 |
| V23162-B0717-B610 | Standard, size II | 12VDC | 7.1/20VDC | 4 form C (4 CO) | Single | Solder | Hermet. sealed 8-1393818-8 |
| V23162-B0717-C112 | Standard, size II | 12VDC | 8.7/20VDC | 6 form A (6 NO) | Bifurcated | Solder | Hermet. sealed 8-1393818-9 |
| V23162-B0719-B110 | Standard, size II | 15VDC | 9.1/24.5VDC | 4 form C (4 CO) | Single | Solder | Hermet. sealed 9-1393818-1 |
| V23162-B0720-B110 | Standard, size II | 20VDC | 11.9/32VDC | 4 form C (4 CO) | Single | Solder | Hermet. sealed 9-1393818-4 |
| V23162-B0720-B112 | Standard, size II | 20VDC | 11.9/32VDC | 6 form A (6 NO) | Single | Solder | Hermet. sealed 9-1393818-5 |
| V23162-B0720-B610 | Standard, size II | 20VDC | 11.9/32VDC | 4 form C (4 CO) | Single | Solder | Hermet. sealed 9-1393818-7 |
| V23162-B0720-C110 | Standard, size II | 20VDC | 17.7/32VDC | 4 form C (4 CO) | Bifurcated | Solder | Hermet. sealed 9-1393818-8 |
| V23162-B0720-C112 | Standard, size II | 20VDC | 14.4/32VDC | 6 form A (6 NO) | Bifurcated | Solder | Hermet. sealed 9-1393818-9 |
| V23162-B0720-C410 | Standard, size II | 20VDC | 17.7/32VDC | 4 form C (4 CO) | Bifurcated | Solder | Hermet. sealed 1393819-1 |
| V23162-B0421-B110 | Standard, size II | 24VDC | 15/36VDC | 4 form C (4 CO) | Single | Solder | Hermet. sealed 6-1393818-1 |
| V23162-B0421-B610 | Standard, size II | 24VDC | 15/36VDC | 4 form C (4 CO) | Single | Solder | Hermet. sealed 6-1393818-3 |
| V23162-B0721-B110 | Standard, size II | 24VDC | 14.5/40VDC | 4 form C (4 CO) | Single | Solder | Hermet. sealed 1393819-4 |
| V23162-B0721-B112 | Standard, size II | 24VDC | 14.5/40VDC | 6 form A (6 NO) | Single | Solder | Hermet. sealed 1393819-5 |
| V23162-B0721-B610 | Standard, size II | 24VDC | 14.5/40VDC | 4 form C (4 CO) | Single | Solder | Hermet. sealed 1-1393819-0 |
| V23162-B0721-C110 | Standard, size II | 24VDC | 22/40VDC | 4 form C (4 CO) | Bifurcated | Solder | Hermet. sealed 1-1393819-2 |
| V23162-B0721-C410 | Standard, size II | 24VDC | 22/40VDC | 4 form C (4 CO) | Bifurcated | Solder | Hermet. sealed 1-1393819-3 |
| V23162-B0722-B110 | Standard, size II | 32VDC | 22.6/54VDC | 4 form C (4 CO) | Single | Solder | Hermet. sealed 1-1393819-5 |
| V23162-B0722-B112 | Standard, size II | 32VDC | 22.6/54VDC | 6 form A (6 NO) | Single | Solder | Hermet. sealed 1-1393819-6 |
| V23162-B0722-B610 | Standard, size II | 32VDC | 22.6/54VDC | 4 form C (4 CO) | Single | Solder | Hermet. sealed 1-1393819-7 |
| V23162-B0722-C410 | Standard, size II | 32VDC | 33.8/54VDC | 4 form C (4 CO) | Bifurcated | Solder | Hermet. sealed 1-1393819-8 |
| V23162-B0726-B110 | Standard, size II | 48VDC | 30/75VDC | 4 form C (4 CO) | Single | Solder | Hermet. sealed 2-1393819-0 |
| V23162-B0726-B112 | Standard, size II | 48VDC | 30/75VDC | 6 form A (6 NO) | Single | Solder | Hermet. sealed 2-1393819-1 |
| V23162-B0726-B610 | Standard, size II | 48VDC | 30/75VDC | 4 form C (4 CO) | Single | Solder | Hermet. sealed 2-1393819-3 |
| V23162-B0XX, standard, size II | | | | | | | |
| V23162-B0726-C110 | Standard, size II | 48VDC | 45/75VDC | 4 form C (4 CO) | Bifurcated | Solder | Hermet. sealed 2-1393819-6 |
| V23162-B0734-B610 | Standard, size II | 60VDC | 36/92VDC | 4 form C (4 CO) | Single | Solder | Hermet. sealed 2-1393819-9 |
| V23162-B0404-B110 | Standard, size II | 72VDC | 48/100VDC | 4 form C (4 CO) | Single | Solder | Hermet. sealed 5-1393818-7 |
| V23162-B0704-B110 | Standard, size II | 72VDC | 48.4/114VDC | 4 form C (4 CO) | Single | Solder | Hermet. sealed 7-1393818-6 |
| V23162-B0704-B112 | Standard, size II | 72VDC | 48.4/114VDC | 6 form A (6 NO) | Single | Solder | Hermet. sealed 7-1393818-7 |
| V23162-B0704-B610 | Standard, size II | 72VDC | 48.4/114VDC | 4 form C (4 CO) | Single | Solder | Hermet. sealed 7-1393818-8 |
| V23162-B0735-B110 | Standard, size II | 110VDC | 65/164VDC | 4 form C (4 CO) | Single | Solder | Hermet. sealed 3-1393819-0 |
| V23162-B0735-B610 | Standard, size II | 110VDC | 65/164VDC | 4 form C (4 CO) | Single | Solder | Hermet. sealed 3-1393819-1 |
| V23162-B0735-C110 | Standard, size II | 110VDC | 98/164VDC | 4 form C (4 CO) | Bifurcated | Solder | Hermet. sealed 3-1393819-2 |
| V23162-B0735-C410 | Standard, size II | 110VDC | 98/164VDC | 4 form C (4 CO) | Bifurcated | Solder | Hermet. sealed 3-1393819-3 |
| V23162-B0703-B110 | Standard, size II | 125VDC | 81/190VDC | 4 form C (4 CO) | Single | Solder | Hermet. sealed 7-1393818-3 |
| V23162-B0703-B610 | Standard, size II | 125VDC | 81/190VDC | 4 form C (4 CO) | Single | Solder | Hermet. sealed 7-1393818-4 |
| V23162-B0XX, 5A, size II | | | | | | | |
| V23162-B0712-F104 | 5A, size II | 7VDC | 3.6/10.5VDC | 2 form C (2 CO) | Single | Solder | Hermet. sealed 8-1393818-2 |
| V23162-B0717-F104 | 5A, size II | 12VDC | 7.1/20VDC | 2 form C (2 CO) | Single | Solder | Hermet. sealed 9-1393818-0 |
| V23162-B0719-F104 | 5A, size II | 15VDC | 9.1/24.5VDC | 2 form C (2 CO) | Single | Solder | Hermet. sealed 9-1393818-3 |
| V23162-B0720-F104 | 5A, size II | 20VDC | 11.9/32VDC | 2 form C (2 CO) | Single | Solder | Hermet. sealed 1393819-2 |
| V23162-B0421-F104 | 5A, size II | 24VDC | 15/36VDC | 2 form C (2 CO) | Single | Solder | Hermet. sealed 6-1393818-4 |
| V23162-B0721-F104 | 5A, size II | 24VDC | 14.5/40VDC | 2 form C (2 CO) | Single | Solder | Hermet. sealed 1-1393819-4 |
| V23162-B0722-F104 | 5A, size II | 32VDC | 22.6/54VDC | 2 form C (2 CO) | Single | Solder | Hermet. sealed 1-1393819-9 |
| V23162-B0726-F104 | 5A, size II | 48VDC | 30/75VDC | 2 form C (2 CO) | Single | Solder | Hermet. sealed 2-1393819-7 |
| V23162-B0704-F104 | 5A, size II | 72VDC | 48.4/114VDC | 2 form C (2 CO) | Single | Solder | Hermet. sealed 8-1393818-0 |
| V23162-B0735-F104 | 5A, size II | 110VDC | 65/164VDC | 2 form C (2 CO) | Single | Solder | Hermet. sealed 3-1393819-4 |
| V23162-B0703-F104 | 5A, size II | 125VDC | 81/190VDC | 2 form C (2 CO) | Single | Solder | Hermet. sealed 7-1393818-5 |
| V23162-H0XX, standard, size II | | | | | | | |
| V23162-H0715-B110 | Standard, size II | 8.5VDC | 5.1/14VDC | 4 form C (4 CO) | Single | Solder, Au pl. | Hermet. sealed 4-1393819-2 |
| V23162-H0720-B110 | Standard, size II | 20VDC | 11.9/32VDC | 4 form C (4 CO) | Single | Solder, Au pl. | Hermet. sealed 4-1393819-4 |
| V23162-H0720-B610 | Standard, size II | 20VDC | 11.9/32VDC | 4 form C (4 CO) | Single | Solder, Au pl. | Hermet. sealed 4-1393819-6 |
| V23162-H0720-C410 | Standard, size II | 20VDC | 17.7/32VDC | 4 form C (4 CO) | Bifurcated | Solder, Au pl. | Hermet. sealed 4-1393819-7 |
| V23162-H0421-B610 | Standard, size II | 24VDC | 15/36VDC | 4 form C (4 CO) | Single | Solder, Au pl. | Hermet. sealed 3-1393819-7 |
| V23162-H0721-B110 | Standard, size II | 24VDC | 14.5/40VDC | 4 form C (4 CO) | Single | Solder, Au pl. | Hermet. sealed 4-1393819-9 |
| V23162-H0721-B610 | Standard, size II | 24VDC | 14.5/40VDC | 4 form C (4 CO) | Single | Solder, Au pl. | Hermet. sealed 5-1393819-0 |
| V23162-H0721-C410 | Standard, size II | 24VDC | 22/40VDC | 4 form C (4 CO) | Bifurcated | Solder, Au pl. | Hermet. sealed 5-1393819-1 |
| V23162-H0722-C110 | Standard, size II | 32VDC | 33.8/54VDC | 4 form C (4 CO) | Bifurcated | Solder, Au pl. | Hermet. sealed 5-1393819-3 |
| V23162-H0722-C410 | Standard, size II | 32VDC | 33.8/54VDC | 4 form C (4 CO) | Bifurcated | Solder, Au pl. | Hermet. sealed 5-1393819-4 |

Cradle N Relay V23154/V23162 (Continued)

| Product code | Version | Coil | Operate/Lim.Arrangement | Contacts | Terminals | Enclosure | PartNumber |
|---------------------------------|-------------|--------|-------------------------|-----------------|-----------|----------------|----------------------------|
| V23162-H0XX, 5A, size II | | | | | | | |
| V23162-H0712-F104 | 5A, size II | 7VDC | 3.6/10.5VDC | 2 form C (2 CO) | Single | Solder, Au pl. | Hermet. sealed 4-1393819-1 |
| V23162-H0719-F104 | 5A, size II | 15VDC | 9.1/24.5VDC | 2 form C (2 CO) | Single | Solder, Au pl. | Hermet. sealed 4-1393819-3 |
| V23162-H0721-F104 | 5A, size II | 24VDC | 14.5/40VDC | 2 form C (2 CO) | Single | Solder, Au pl. | Hermet. sealed 5-1393819-2 |
| V23162-H0721-F107 | 5A, size II | 24VDC | 14.5/40VDC | 2 form B (2 NC) | Single | Solder, Au pl. | Hermet. sealed 1419147-7 |
| V23162-H0722-F104 | 5A, size II | 32VDC | 22.6/54VDC | 2 form C (2 CO) | Single | Solder, Au pl. | Hermet. sealed 5-1393819-5 |
| V23162-H0704-F104 | 5A, size II | 72VDC | 48.4/114VDC | 2 form C (2 CO) | Single | Solder, Au pl. | Hermet. sealed 4-1393819-0 |
| V23162-H0703-F104 | 5A, size II | 125VDC | 81/190VDC | 2 form C (2 CO) | Single | Solder, Au pl. | Hermet. sealed 3-1393819-9 |

Компания «Океан Электроники» предлагает заключение долгосрочных отношений при поставках импортных электронных компонентов на взаимовыгодных условиях!

Наши преимущества:

- Поставка оригинальных импортных электронных компонентов напрямую с производств Америки, Европы и Азии, а так же с крупнейших складов мира;
- Широкая линейка поставок активных и пассивных импортных электронных компонентов (более 30 млн. наименований);
- Поставка сложных, дефицитных, либо снятых с производства позиций;
- Оперативные сроки поставки под заказ (от 5 рабочих дней);
- Экспресс доставка в любую точку России;
- Помощь Конструкторского Отдела и консультации квалифицированных инженеров;
- Техническая поддержка проекта, помощь в подборе аналогов, поставка прототипов;
- Поставка электронных компонентов под контролем ВП;
- Система менеджмента качества сертифицирована по Международному стандарту ISO 9001;
- При необходимости вся продукция военного и аэрокосмического назначения проходит испытания и сертификацию в лаборатории (по согласованию с заказчиком);
- Поставка специализированных компонентов военного и аэрокосмического уровня качества (Xilinx, Altera, Analog Devices, Intersil, Interpoint, Microsemi, Actel, Aeroflex, Peregrine, VPT, Syfer, Eurofarad, Texas Instruments, MS Kennedy, Miteq, Cobham, E2V, MA-COM, Hittite, Mini-Circuits, General Dynamics и др.);

Компания «Океан Электроники» является официальным дистрибьютором и эксклюзивным представителем в России одного из крупнейших производителей разъемов военного и аэрокосмического назначения «**JONHON**», а так же официальным дистрибьютором и эксклюзивным представителем в России производителя высокотехнологичных и надежных решений для передачи СВЧ сигналов «**FORSTAR**».



JONHON

«**JONHON**» (основан в 1970 г.)

Разъемы специального, военного и аэрокосмического назначения:

(Применяются в военной, авиационной, аэрокосмической, морской, железнодорожной, горно- и нефтедобывающей отраслях промышленности)

«**FORSTAR**» (основан в 1998 г.)

ВЧ соединители, коаксиальные кабели,
кабельные сборки и микроволновые компоненты:

(Применяются в телекоммуникациях гражданского и специального назначения, в средствах связи, РЛС, а так же военной, авиационной и аэрокосмической отраслях промышленности).



Телефон: 8 (812) 309-75-97 (многоканальный)

Факс: 8 (812) 320-03-32

Электронная почта: ocean@oceanchips.ru

Web: <http://oceanchips.ru/>

Адрес: 198099, г. Санкт-Петербург, ул. Калинина, д. 2, корп. 4, лит. А