



User Guide

UG000393

AS7265x Multispectral Chipset

Evaluation Kit User Guide

Hardware & Software

v1-00 • 2018-Aug-21

Content Guide

1	Introduction.....	3	4.1	Operation	12
1.1	Kit Content.....	3	4.2	18 Channel Sensor Page.....	12
1.2	Ordering Information	4	4.3	Logging & Control Page.....	14
2	Getting Started.....	5	4.4	Console Page.....	16
3	Hardware Description.....	6	4.5	FW Update Page	17
3.1	Hardware Architecture	6	5	Schematics, Layers and BOM	18
3.2	Sensor Architecture.....	7	6	Revision Information.....	21
3.3	Power Supply	9	7	Legal Information	22
3.4	Interface to Controller.....	9			
3.5	LEDs.....	10			
3.6	Firmware	11			
4	Software Description.....	12			

1 Introduction

AS7265x Multispectral Chipset Evaluation Kit provides a platform to evaluate **ams** AS7265x Multispectral Chipset products with the Spectral Sensor Dashboard software running on a Windows personal computer. This user guide describes the features and functions of AS7265x Multispectral Chipset evaluation kit. Note, this manual includes all details for the sensor hardware, software installation and description based on hardware generation 2Vx and firmware 12Vx or higher. It replaces former **ams** manuals for AS7265x hardware and software, which describes older sensor systems. Do not mix older and newer system components. In case of any updates, check before the details for compatibility in the relevant application notes.

The described kit of the Multispectral Chipset AS7265x includes a sensor hardware release 2Vx¹ and firmware version 11Vx.x and higher. In case of any systems changings or new development, please check the compatibility of firmware and hardware. For more details, see the application note “AS7265x Design considerations”.

1.1 Kit Content

The following items are delivered with the AS7265x Evaluation Kit. Please ask **ams** sales for accessories like mechanical houses or diffusers or see for more details in the sensor chip datasheet and/or in the design considerations.

Figure 1:
Kit Content



Pos.	Item	Comment
1	USB Cable	USB – UART Cable with MicroUSB Connector
2	AS7265x Multispectral Chipset Board	Evaluation Board
3	USB Data Stick	Documents, software, firmware and drivers

¹ Rarely, a hardware in a supplied sensor unit may have the revision 1Vx. Please check if the firmware 12Vx is loaded. This is compatible with the functions described here. Otherwise, please contact the ams support for a Firmware update or sensor exchange.

1.2 Ordering Information

Ordering Code	Description
AS7265x Demo Kit	Demo Kit AS7265x Multispectral Chipset v3

2 Getting Started

The demo kit requires one time installation of FTDI Virtual COM Port Driver for the USB cable as well as the free ActiveState ActiveTcl Community Edition for the dashboard software if both are not already installed on the computer. Both installation files can be found in the USB Data Stick in the setup directories. Please install it as an administrator.

If there is an issue about the installation, please read our AS7265x_Demo_Kit_Installation_Quick_Start_Guide.pdf on USB stick or refer to www.ftdichip.com and www.activestate.com for more information.

The Dashboard software does not require an installation. Please copy the following files to any folder you would like to work with and double click the “.tbc” file to start the GUI.

Figure 2:
AS7265x Software Files on USB Stick

#	File / Directory	Comment
1	ams_Spectral_Sensor_Dashboard_x.x.xx.tbc	in directory .\Dashboard Software Tcl file with revision x.x.xx
2	ams_logo_xxx.gif or ams_logo_xxx.png	in directory .\Dashboard Software ams logo
3	FTDI Virtual COM Port Driver Setup	Driver setup for FTDI cable
4	ActiveState TCL Run-Time Setup	TCL setup

After the installation, click “ams_Spectral_Sensor_Dashboard_x.x.x.tbc” file provided with the kit to launch the Dashboard software. “x.x.x” is the revision number of the software and can be higher than shown here.

Please see chapter 4 for the software handling and description.

3 Hardware Description

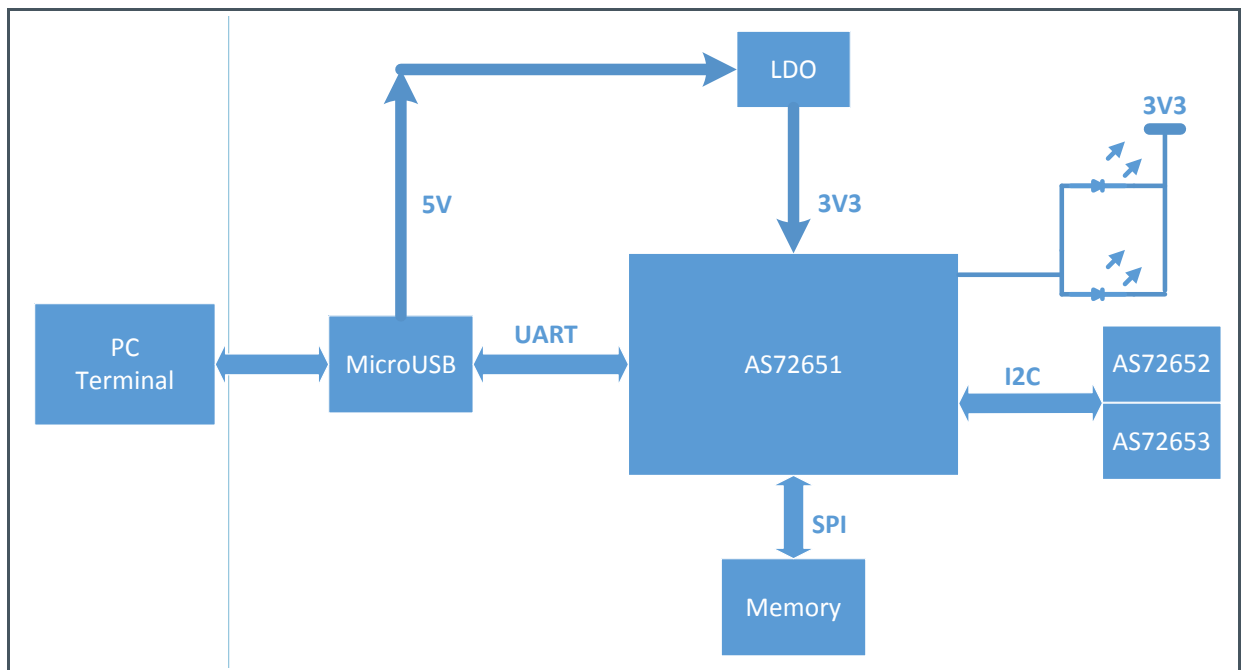
The AS7265x Multispectral Chipset board by default consists of the UART interface, the LDO for 3.3V supply, AS72651/AS72652/AS72653 devices with associated flash memory, and the programming header for the flash memory.²

If you would like to evaluate AS7265x Multispectral Chipset products with an I²C interface, the board also has the option for that. Please refer to chapter 3.4.

3.1 Hardware Architecture

The AS7265x hardware exists from sensor chips AS7265x, power supply, serial flash and interfaces. The following Figure 3 shows the block diagram with sensor chips, power supply, memory and interfaces. See the sensor data sheets for more sensor or local network details.

Figure 3:
Board Block Diagram

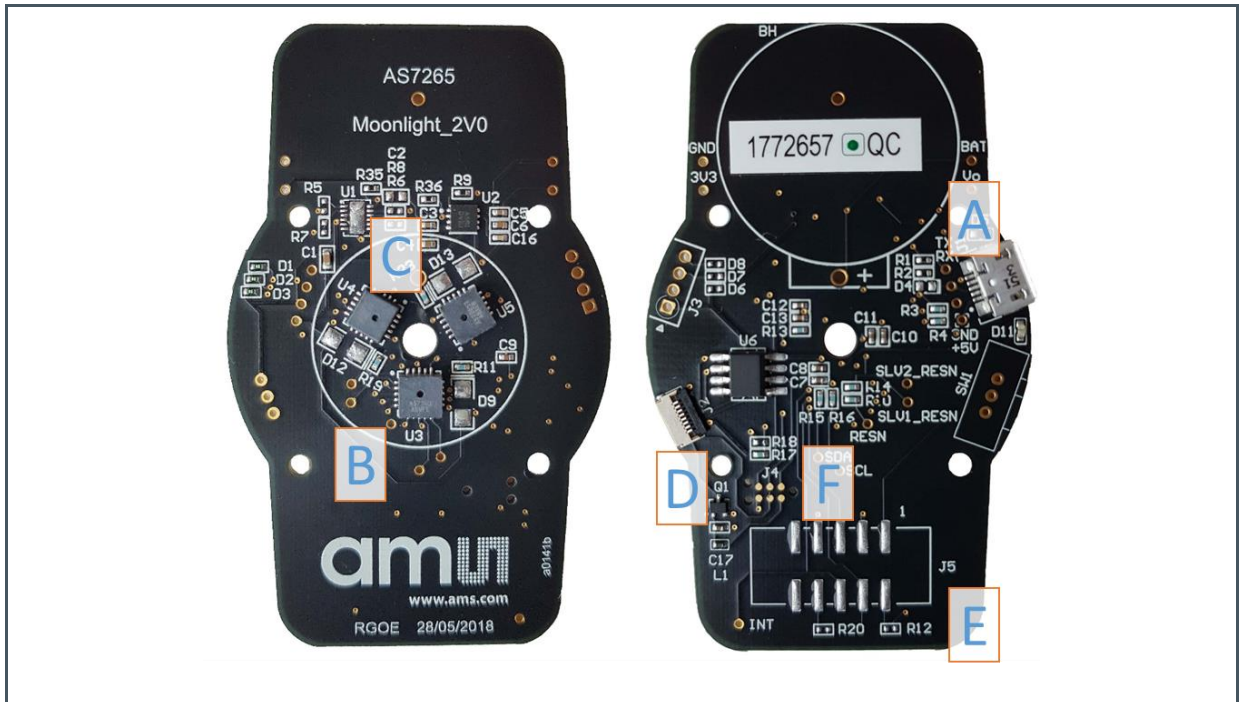


² In exceptional cases, other fully compatible sensor chips like AS7263 and/or AS7265/AS27266/AS2767 may be mounted on AS7265x evaluation kits. In this case, these chips replace the original sensor chips in all functions and parameters.

Figure 4 shows the positions of the sensors, LEDs and interfaces on the sensor board. Compare these components with their given details in the schematics in chapter 5.

The following chapters describe the main components of the AS7265x Multispectral chipset.

Figure 4:
Connectors, Sensors and LEDs



Pos.	Designator	Comment
A	J1	MicroUSB (UART) Connector; connect to a personal computer
B	AS72651, D9	AS72651 with Place Holders for the LED
C	AS72652/3, D12/13	AS72652/3 with Place Holders for the LEDs
D	J2	Flash Memory Programming Header
E	J5	Alternative system interface (see schematic interface)
F	J4	Connector for FlashCatUSB programmer tool

3.2 Sensor Architecture

The AS7265x multispectral chip set architecture considers the realization of an add-on local sensor network based on three AS7265x sensor devices connected via I²C. These sensor devices are identical in function and parameters but alternative and complementary in their spectral filters.

One sensor device is the master in the local network and realizes the host and master/slave communication nearly in real-time (see Figure 3 and Figure 5). Therefore, a $3 \times 6 = 18$ spectral filter solution as “multiple spectral chipset” is possible (see Figure 6).

Figure 5:
Block Diagram

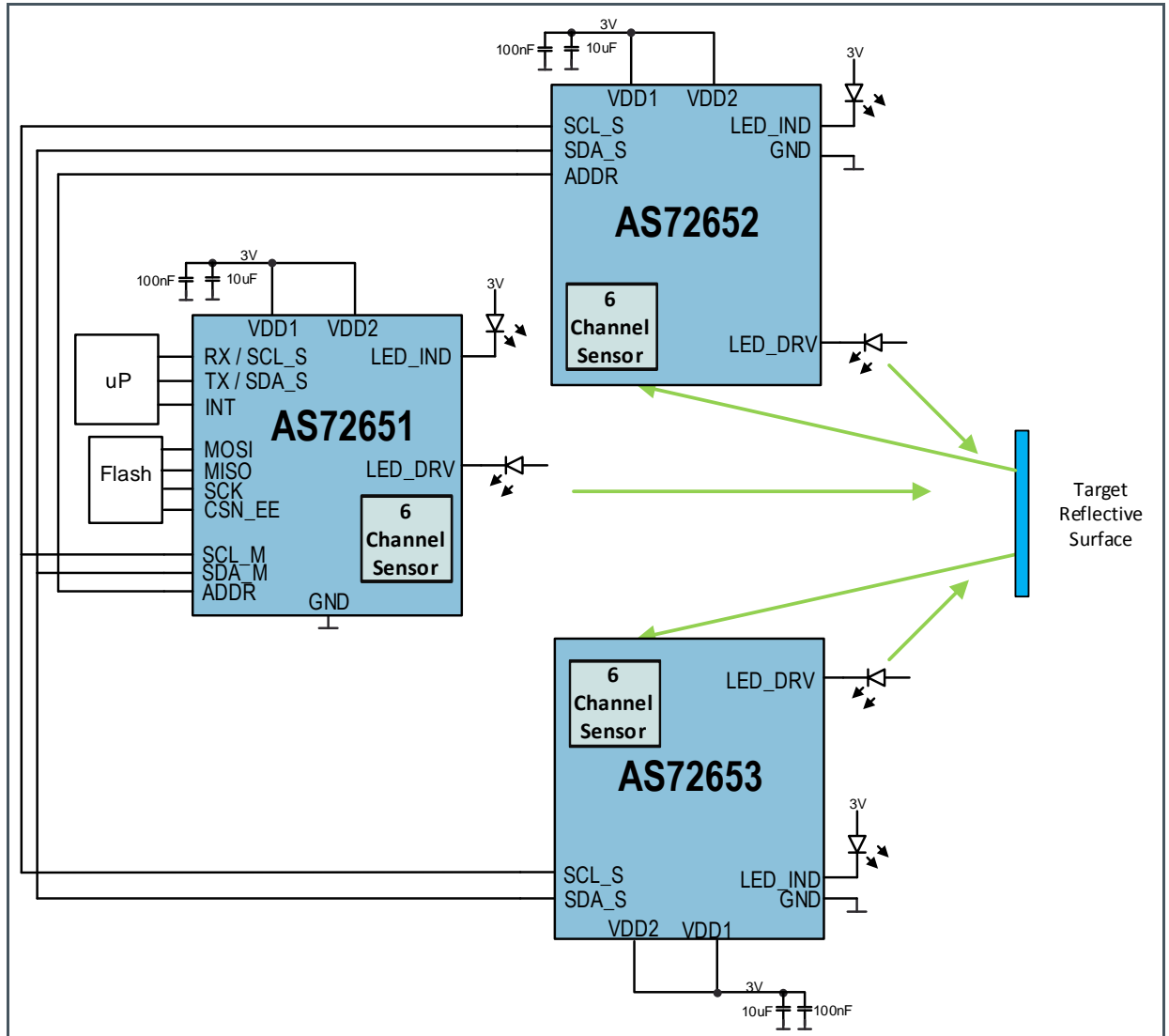
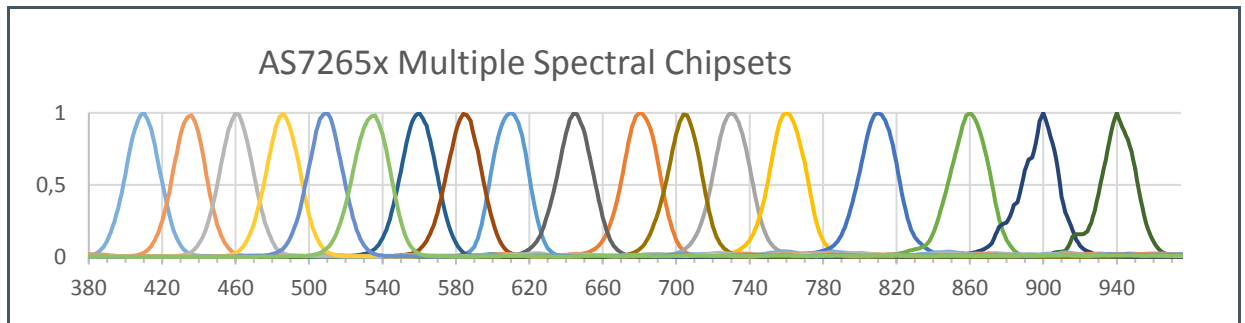


Figure 6:
Spectral Filter Curves of the Sensor System



3.3 Power Supply

The AS7265x Multispectral Chipset board operates with the MicroUSB cable that connects to personal computer. The onboard LDO converts 5V USB power to 3.3V for the chipsets.

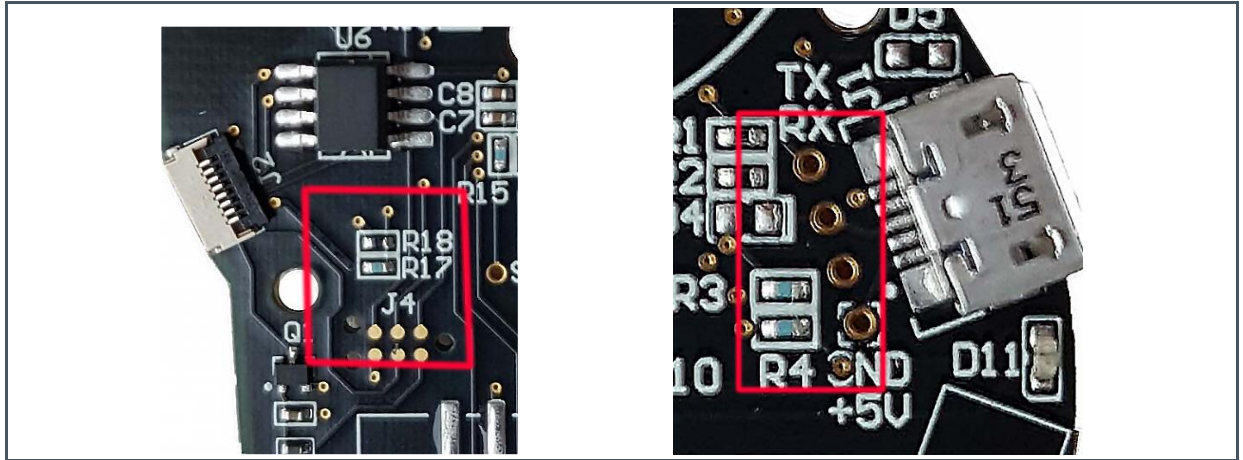
3.4 Interface to Controller

AS7265x Multispectral Chipset board by default has UART interface to a controller. A user could get the sensors data with the Dashboard software. J1 is the MicroUSB connector that connects the cable to a computer for UART interface. The cable has an internal USB-UART converter.

It is very easy to evaluate AS7265x Multispectral Chipset solution with AT commands through the UART interface. The Spectral Sensor Dashboard software runs on a Windows computer.

Nevertheless, I²C interface can be supported with a minor modification. The test points in Figure 7 can be used for I²C connection. The test point, TX, should be connected to SDA and the test point, RX, should be connected to SCL. In addition, R3/R4 are for I²C pull up resistors. R17 and R18 would pull I²C_ENB pin of AS72651 up or down for selecting UART or I²C interfaces. Install R17 for I²C interface and install R18 for UART interface.

Figure 7:
Components for I²C or UART Interface



3.5 LEDs

The Multispectral Chipset demo board does not include mounted LEDs as standard. On the other side, some of customer applications require external LEDs as the light source. The AS7265x Multispectral Chipset demo board has some LED placeholders on board for this purpose. Each LED is series with a current limit resistor. By default, the LEDs and the resistors are unpopulated.

Figure 5 shows the typical sensor block diagram from one sensor chip. Note, all AS7265x sensor chips of the Multispectral chipset includes a LED_DRV function. Therefore, the set supports three separate addressable LEDs on board which must be re-soldered by the customer. In contrast, the board solution of the chip set only considers one LED_ind function in contrast to the block diagram in Figure 5.

All optical characteristics are optimized for diffused light. When using a point light source or collimated light on the sensor, the sensor opening must be covered by a lambertian diffuser with achromatic characteristics. Diffuser of Tsujiden like D121UP have been successfully tested at **ams**. If in the application diffused light, e.g. used by a reflective surface, no additional diffuser is required.

A generic application of AS7265x is to shine light rays to a target and AS7265x produces outputs based on the reflected light rays. So LED selection is determined by the spectral responsivity of reflected light and characteristics of the target. For example, if the target is expected to absorb 680nm light and the application needs to distinguish the target from others, a broadband white LED might be used as the light source with AS72651 and the 680nm channel should be checked. Various applications may require different light sources.

The place holders for LEDs are D9, D12, and D13 (see Figure 4 left side). D9 is connected to AS72651 and ATLED0 = 100/0 turns D9 ON/OFF. D12 is controlled by AS72652 and ATLED2 = 100/0 turns it ON/OFF. D13 is controlled by AS72653 and ATLEDE = 100/0 turns it ON/OFF. The AS7265x device supports various LED currents, 12.5mA, 25mA, 50mA, or 100mA. ATLEDC = 0/16/32/48

(decimal) sets the current through D9 to 12.5mA/25mA/50mA/100mA. Similarly, ATLEDD sets the current of D12 and ATLEDE sets the current of D13.

The LED currents can be also controlled and configured with the virtual I²C registers, 0x07 (the register address 0x87 for write) for D9, 0x2E (the register address 0xAE for write) for D12, and 0x2F (the register address 0xAF for write) for D13. For more details, see the description of the I²C LED_CONFIG command in the AS7265x command set.

Since the power to the LEDs is 5V, the actual current through LEDs might be smaller if the forward of LED is high. If this is the case, please connect the LED with an external power and pick the serial resistor value based on the forward voltage of the LED and the desired LED current. Please refer to the LED I-V curve specification. If the forward of LED is low, the current limit resistor can be installed with 0Ω.

3.6 Firmware

Using the AS7265x chipset requires the use of a sensor device specific firmware. This firmware in the latest available version was loaded into a serial flash AT25SF041. A list of **ams** tested serial flash memories can be found in the **ams** application note “Serial flash programming and update” as well as an overview for the existing firmware versions and their possibility for uploading for first time or as update. Note, there are hardware and compatibility differences between the single firmware and hardware versions. Therefore, please ask the **ams** sales team for the latest versions before starting a new feasibility or project.

4 Software Description

The following chapters describes the evaluation of AS7265x Multispectral Chipset with **ams** Spectral Sensor Dashboard application running on a personal computer system.

4.1 Operation

After the installation, click “ams_Spectral_Sensor_Dashboard_x.x.x.tbc” file provided with the kit to launch the Dashboard software. ‘x.x.x’ is the revision number of the software.

Figure 8:
Spectral Sensor Dashboard Window after Startup



The PC COMM Port select window will appear first after Dashboard launch (and the hardware is connected to the USB port).

To find which (if more than one showing) COMM Port to select:

- Open Windows Device Manager
- Click on “Ports (COM & LPT)”
- Find the “USB Serial Port (COMxx)”, and use that to select the correct COMxx.

Once COM Port is selected and the “18 Channel Sensor Page” will open.

4.2 18 Channel Sensor Page

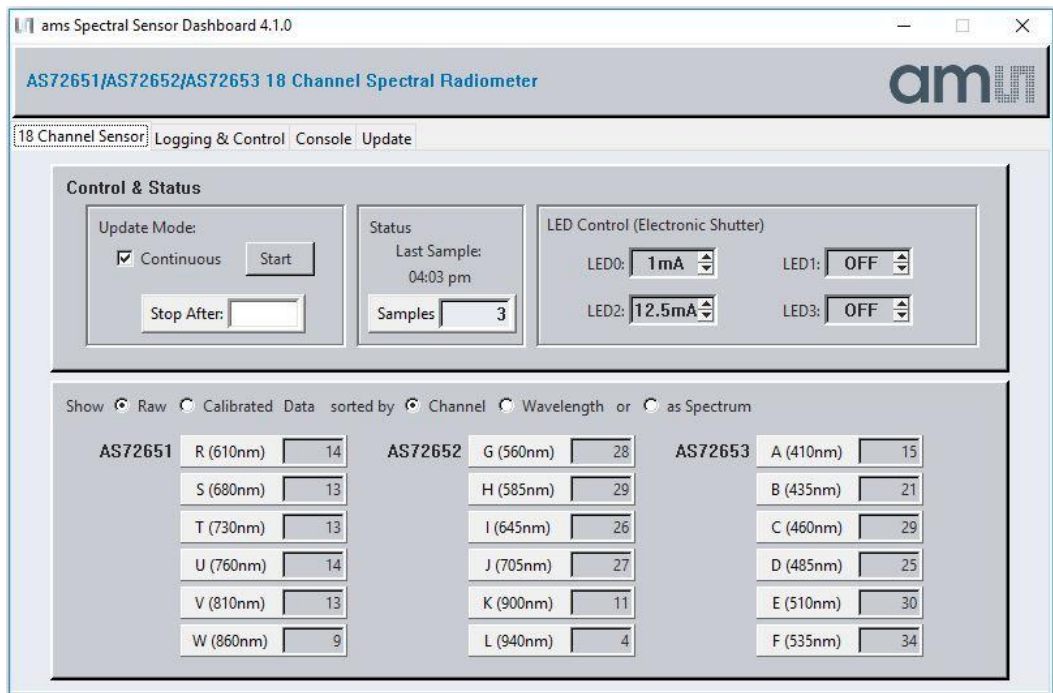
The 18 Channel Sensor Page allows to readout 18 channels raw data from the three sensor devices AS72651, AS72652 and AS72653. It also provides controls for the Update Mode, LED Control/+status and is equipped with a section to observe the Raw and Calibrated Data in 18 channels and special function to sort the data in the order of Channel, Wavelength and Spectrum.

Clicking the “Sample” button will update the displayed metrics once with the most current data. Selecting “Continuous”, the “Sample” button will change to the “Start” button.

Click the button to enable a display of continuously update metrics. If “Stop After” is not used, which is the sample limit, sampling will not stop.

- The “LED0” control sets AS72651 indicator LED current to on (1mA) or off as desired. It cannot be set once continuous sampling is set so should be setup prior. Also, the indicator LED flashes during AS72651 firmware updates regardless of the “LED0” control setting.
- The “LED1” control sets AS72651 onboard LEDs current to 12.5mA, 25mA, 50mA, 100mA or OFF as desired. It cannot be set once continuous sampling is set so should be setup prior. The “LED2” and “LED3” controls set AS72652 and AS72653 onboard LEDs current. By default onboard LEDs are not installed. The LED should be installed based on the application. The place holders, D9/D10/D12/D13, are for LEDs.
- The “Status” control give you the time of last sample and display the number of samples read in the “Samples” control.
- The 18 Channel Sensor Values displays the current raw data.

Figure 9:
18 Channel Sensor Page³



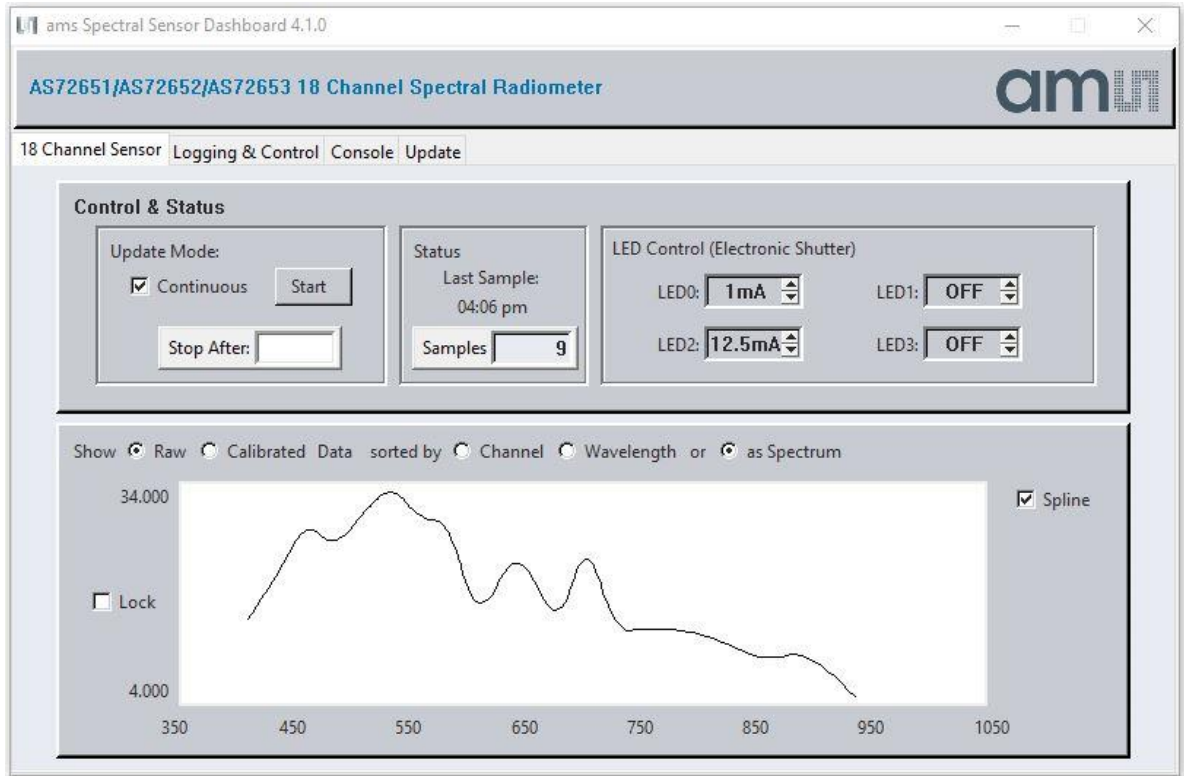
A spectrum function is implemented to plot the graph based on the sensor data reading at its corresponding wavelength.

- User can select plotting based on selecting raw data or calibrated data.
- “Lock” checkbox gives the flexibility to lock a range of amplitude for sensor readings.

³ In case of incorrect displays or moved menus, please stop the Dashboard software. Start “Tcl – Installation directory \ bin \ wish86.exe, select the parameters “/ Properties / Compatibility” by clicking the right mouse key, select “Override high DPI scaling behavior” and “In Scaling performed by: System”. Then click ok and start the dashboard software again.

- “Spline” checkbox gives the ability to select between the line graph and spline graph. Spectrum displays plotted Spline graph with raw data are shown in the following Figure 10.

Figure 10:
Spectrum



4.3 Logging & Control Page

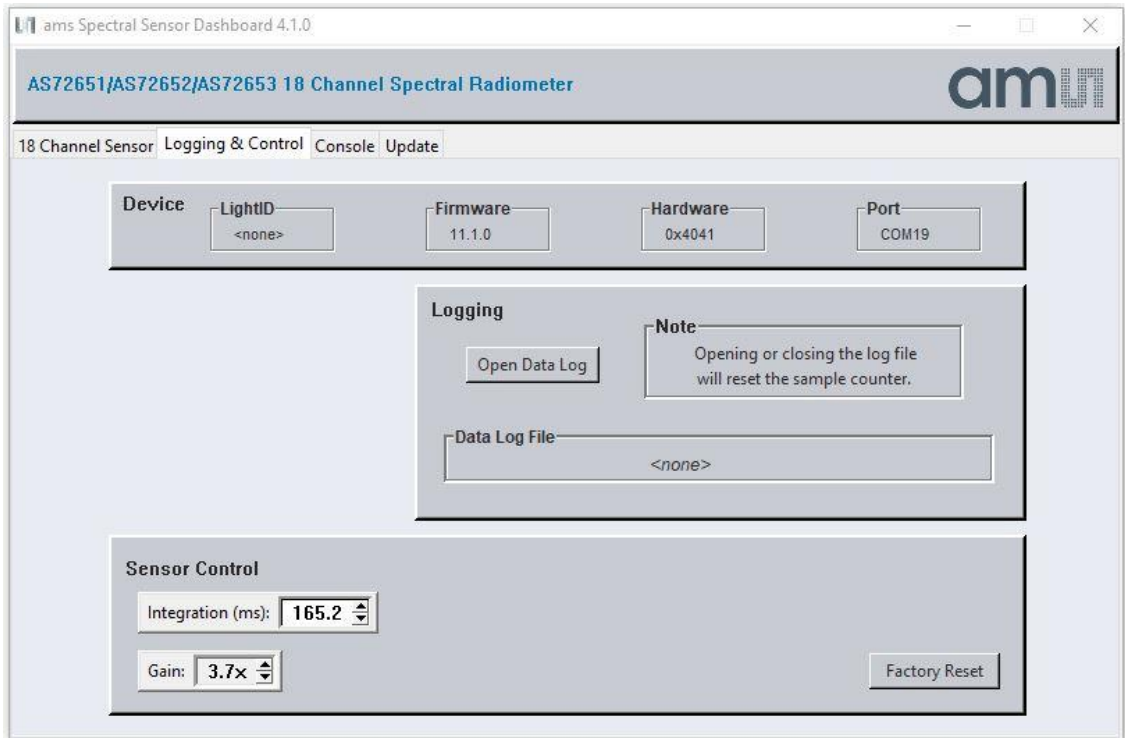
The “Logging & Control” page gives you more information about AS7265x Multispectral Chipset as well as more controls. It includes “Logging” and “Sensor Control”.

- If desired, click the “Open Data Log ” to store AS7265x Multispectral Chipset data (Excel CSV format). When the sampling is done, close the log file to store the data, or set the number in the “Stop After” control on previous page and that will automatically store the data.
- Modify the “Sensor Control” for Integration Time and Gain as needed by typing in the value or Up-Down arrow.
- “Factory Reset” reset stored values and parameters like Gain, Integration time, Samples and LED Control to ‘Factory’ default values.
- The “Device” control provide more information about AS7265x Multispectral Chipset

Logged Data Format (when data file is designated and logging is enabled, 2 samples)

As shown above, the logged test data are saved in Excel CSV format. Data are saved in the user specified file name and location. Timestamp is YYYY/MM/DD/seconds_since_midnight.

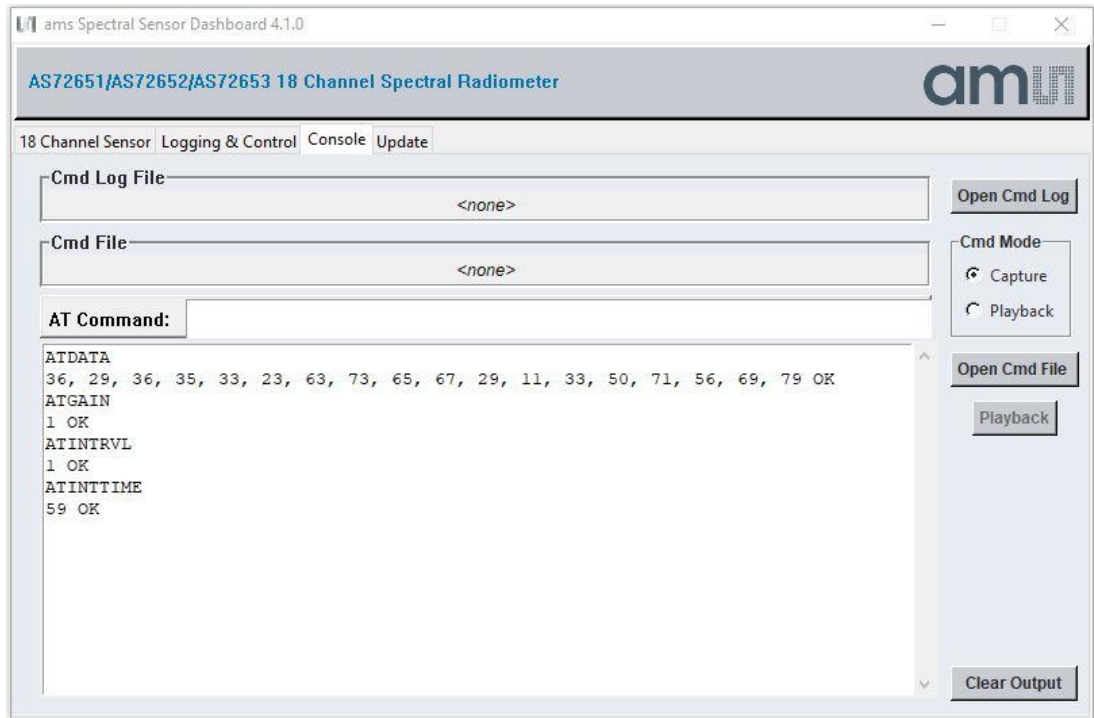
Figure 11:
Logging & Control Page



4.4 Console Page

The Console Page is the human-software interface for definition and processing of in/out files and for logging the AT-commands.

Figure 12:
Console Page

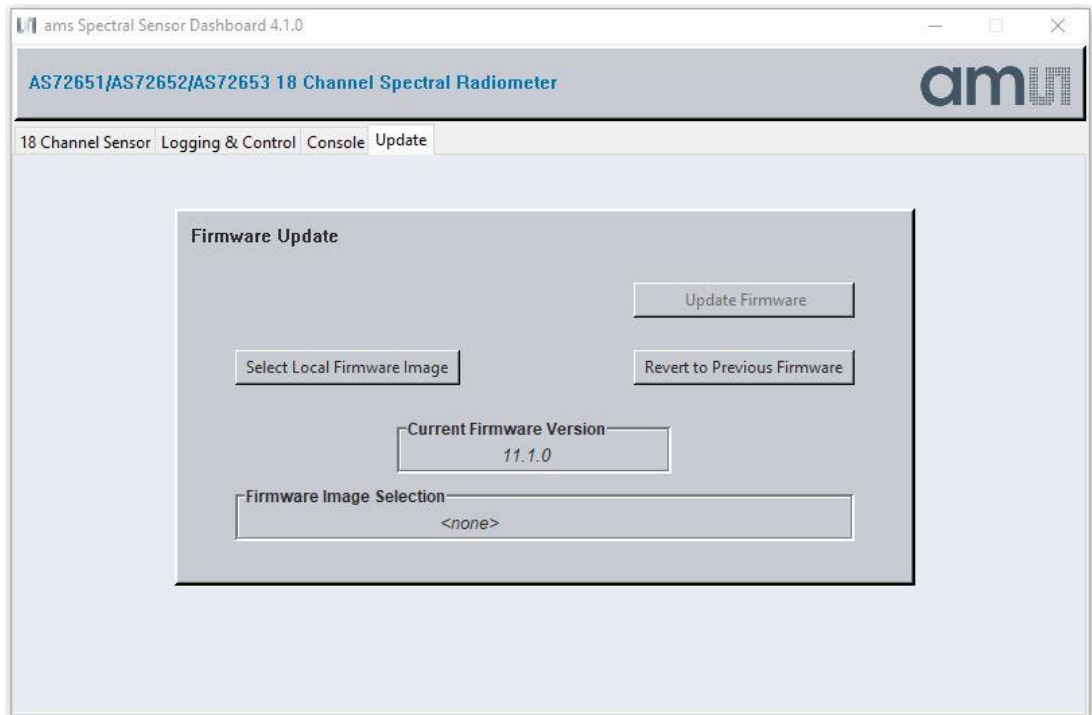


AT commands could be both observed and entered on the “Console” page.

- After a control is changed or data are sampled the resulting AT Commands can be observed on this page and optionally captured on the computer running Dashboard.
- And if desired commands can be entered on this page, in the AT Command line at the top of the page or via the Playback of previously captured commands.
- Use “Open Cmd Log” to create a “.txt” file in a desired folder. Once “Close Cmd Log” is pressed all output from the log window will be stored in log file.
- In Capture mode use “Open Cmd File” to create “.cmd” file. AT Commands typed in will be saved on pressing enter, then “Close Cmd File” to capture the entered AT Commands. The command file can be changed in a windows text editor e.g. to add or remove AT commands. In Playback mode use “Open Cmd File” to open the saved “.cmd” file, then “Playback”, to execute the stored commands.
- “Clear Output” is used to clear all the previous AT Command measured in Console Page

4.5 FW Update Page

Figure 13:
FW Update Page



As shown above on the Update page, AS7265x Multispectral Chipset firmware can be updated from the Dashboard:⁴

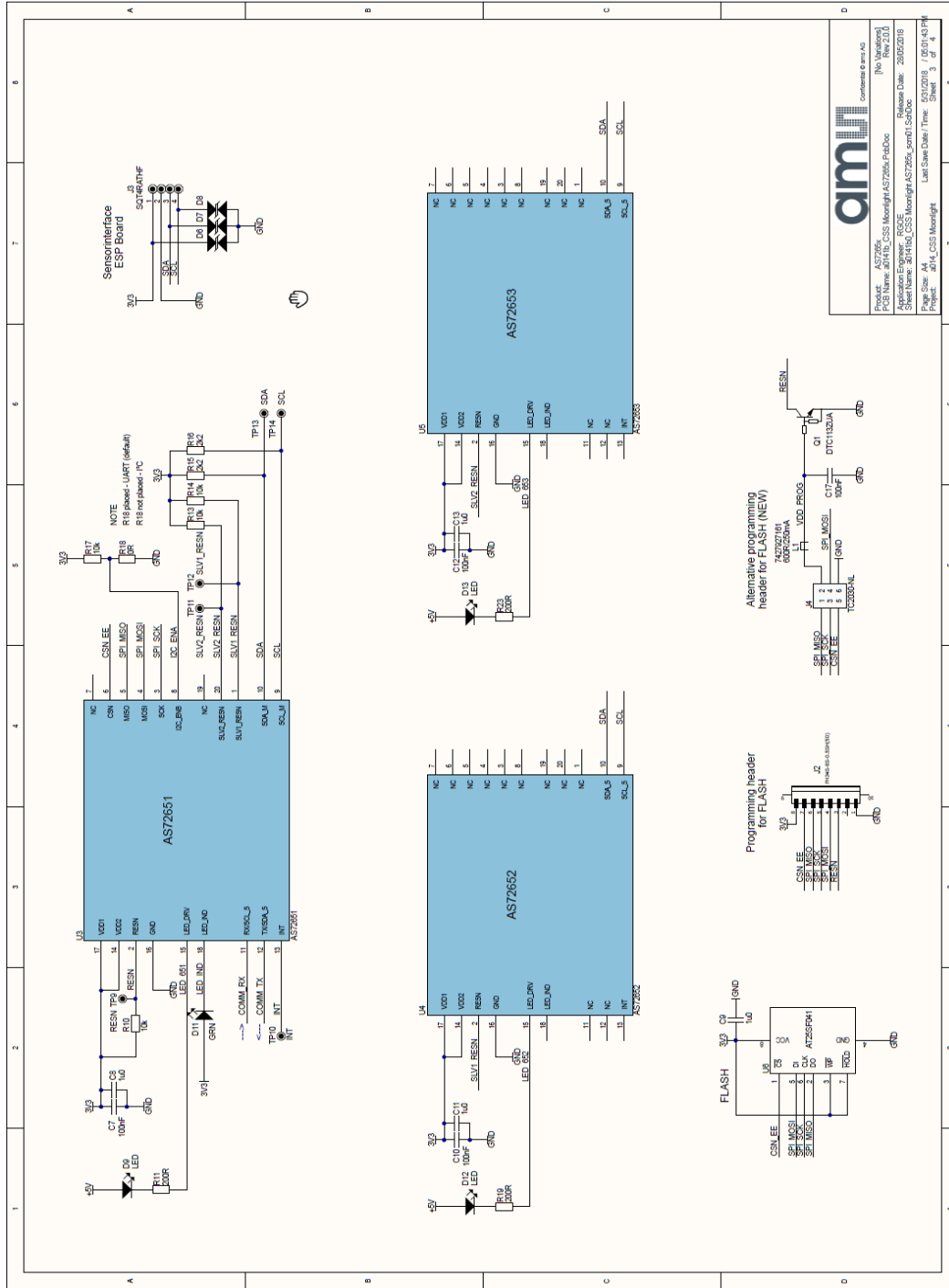
- Obtain the latest “*.bin” AS7265x Multispectral Chipset firmware file⁵ from **ams**, via email or USB flash drive, etc.
- Store the “*.bin” file on the computer.
- Use the “Select Local Firmware Image” button as shown above to navigate to the “*.bin” file.
- Next, select the “Update Firmware” button to start the update procedure; once the update is finished, the “Current Firmware Version” is updated with new firmware.
- After firmware update is complete close the Dashboard software, cycle power on the hardware by unplugging and re-plugging the USB connection and then re-launch Dashboard.
- “Revert to Previous Firmware” can be used to degrade back to previous version.

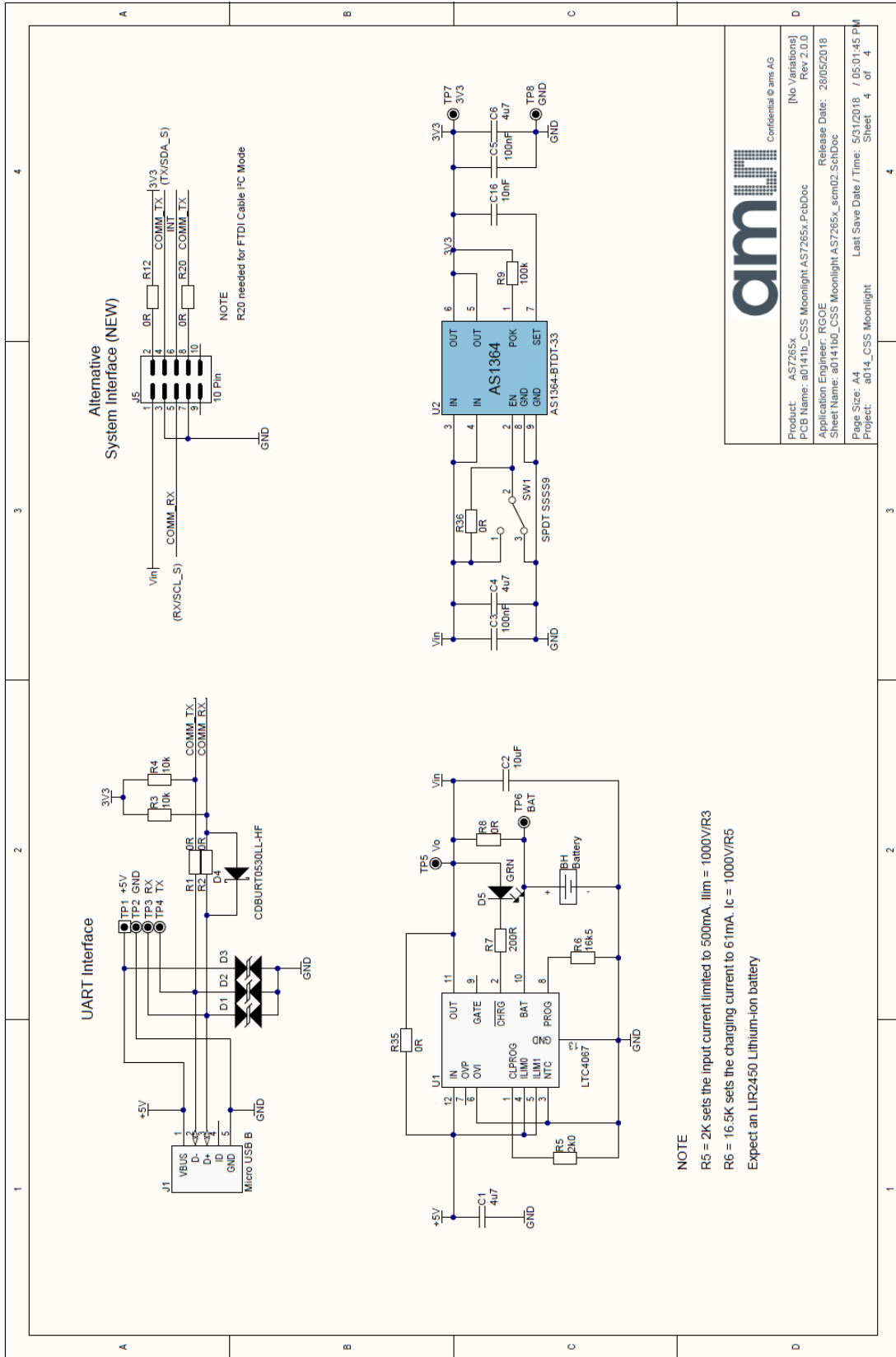
⁴ Please note: FW11.0.0 or later is required to support the firmware update feature with this GUI of generation 2. In addition, a change in PIN configuration for the new firmware 11.xx compared to the old version. Therefore might exists a special firmware variant for Moonlight which is not hardware compatible to standard firmware 11.x.x

⁵ The given manual for the software is based on the hardware release 1V1 generation 1 of the Multispectral Chipset evaluation kit. Make sure, the update file for the firmware is compatible with these releases. For more details, see the application note “AS7265x Design considerations”.

5 Schematics, Layers and BOM

Figure 14:
Schematic, Interfaces and BOM





Bill of Materials		Variant without battery charger and alternative connectors						
Index	Designator	Description	Comment	Manufacturer 1	Manufacturer Part Number 1	Supplier 1	Supplier Part Number 1	Quantity
Company: ams AG								
Application Engineer: RG0E								
Product Number: AS7265x								
ARS Project Name: a014_CSS Moonlight								
Boardtype & Version: a0141b_CSS Moonlight_AS7265x.PcbDoc								
Release Date: 28/05/2018								
Revision: Rev 2.0.0								
Components with designator R or C are exempted for procurement in the manufacturer. Only design and electronic parameters must be the same or better.								
1	C1	4u7		TDK Corporation	C1608X5R1A475K080AC	Digi-Key	445-5170-1-ND	1
2	C3, C5, C7, C10, C12, C16, C17	100nF, 100nF, 100nF, 100nF, 100nF, 100nF		Murata Electronics North America	GRM156R71C104KA88D	Digi-Key	490-3261-1-ND	7
3	C4, C6	4u7		TDK Corporation	C1005X5R1A475M050BC	Digi-Key	445-8023-1-ND	2
4	C8, C9, C11, C13	1u0		TDK Corporation	C1005X5R1A105K050BB	Digi-Key	445-4114-1-ND	4
5	D1, D2, D3	PGB1010402KR	D_Suppressor_bip	Litelfuse Inc.	PGB1010402KR	Digi-Key	F2862CT-ND	3
6	D11	GRN		Osram Opto	LGL29K-F2J1-24	RSComponents	6544304	1
7	J1	Micro USB B		Mobex, LLC	0473460001	Digi-Key	WM17141CT-ND	1
8	J2	FH34S-8S-0.6SH		Hirose Electric Co Ltd	FH34S-8S-0.6SH(50)	Digi-Key	HFT108CT-ND	1
9	L1	FERRITE BEAD 600 OHM	600R/250mA	Würth	7427927161	Digi-Key	732-2387-1-ND	1
10								
11	R1, R2, R18, R35, R36	0R		AVX Corporation	VCH4AG100R8MATWA	Digi-Key	478-4709-1-ND	5
12	R3, R4, R10, R13, R14, R17	10k		Panasonic Electronic Components	ERA-2AED103X	Digi-Key	P10KDECT-ND	6
13	R9	100k		Susumu	RG1005P-104-B-T5	Digi-Key	RG10P100KBCT-ND	1
14	R11, R19, R23	200R		Vishay	CRCW0402200RFKED	RSComponents	6788949	3
15	R15, R16	2k2		Vishay Dale	CRCW0402K20FKEDHP	RSComponents	812-1644	2
16	U2	AS1364-BTDT-33		ams	AS1364-BTDT-33	Digi-Key	AS1364-BTDT-33CT-ND	1
17	U3, U4, U5	AS72651, AS72652, AS72653		ams				3
18	U6	M95M02-DR	AT25SF041	Adesto Technologies	AT25SF041-SSH-D-B	Digi-Key	1265-1174-5-ND	1

6 Revision Information

Changes from previous version to current revision v1-00	Page
From 1.x.x to 2.0.0 - all chapters have been revised; software and hardware converted into one manual and all changes of generation 2 of HW/SW/FW were considered in a new ams template	all

- Page and figure numbers for the previous version may differ from page and figure numbers in the current revision.
- Correction of typographical errors is not explicitly mentioned.

7 Legal Information

Copyrights & Disclaimer

Copyright ams AG, Tobelbader Strasse 30, 8141 Premstaetten, Austria-Europe. Trademarks Registered. All rights reserved. The material herein may not be reproduced, adapted, merged, translated, stored, or used without the prior written consent of the copyright owner.

Demo Kits, Evaluation Kits and Reference Designs are provided to recipient on an "as is" basis for demonstration and evaluation purposes only and are not considered to be finished end-products intended and fit for general consumer use, commercial applications and applications with special requirements such as but not limited to medical equipment or automotive applications. Demo Kits, Evaluation Kits and Reference Designs have not been tested for compliance with electromagnetic compatibility (EMC) standards and directives, unless otherwise specified. Demo Kits, Evaluation Kits and Reference Designs shall be used by qualified personnel only.

ams AG reserves the right to change functionality and price of Demo Kits, Evaluation Kits and Reference Designs at any time and without notice.

Any express or implied warranties, including, but not limited to the implied warranties of merchantability and fitness for a particular purpose are disclaimed. Any claims and demands and any direct, indirect, incidental, special, exemplary or consequential damages arising from the inadequacy of the provided Demo Kits, Evaluation Kits and Reference Designs or incurred losses of any kind (e.g. loss of use, data or profits or business interruption however caused) as a consequence of their use are excluded.

ams AG shall not be liable to recipient or any third party for any damages, including but not limited to personal injury, property damage, loss of profits, loss of use, interruption of business or indirect, special, incidental or consequential damages, of any kind, in connection with or arising out of the furnishing, performance or use of the technical data herein. No obligation or liability to recipient or any third party shall arise or flow out of ams AG rendering of technical or other services.

RoHS Compliant & ams Green Statement

RoHS Compliant: The term RoHS compliant means that ams AG products fully comply with current RoHS directives. Our semiconductor products do not contain any chemicals for all 6 substance categories, including the requirement that lead not exceed 0.1% by weight in homogeneous materials. Where designed to be soldered at high temperatures, RoHS compliant products are suitable for use in specified lead-free processes.

ams Green (RoHS compliant and no Sb/Br): ams Green defines that in addition to RoHS compliance, our products are free of Bromine (Br) and Antimony (Sb) based flame retardants (Br or Sb do not exceed 0.1% by weight in homogeneous material).

Important Information: The information provided in this statement represents ams AG knowledge and belief as of the date that it is provided. ams AG bases its knowledge and belief on information provided by third parties, and makes no representation or warranty as to the accuracy of such information. Efforts are underway to better integrate information from third parties. ams AG has taken and continues to take reasonable steps to provide representative and accurate information but may not have conducted destructive testing or chemical analysis on incoming materials and chemicals. ams AG and ams AG suppliers consider certain information to be proprietary, and thus CAS numbers and other limited information may not be available for release.

Headquarters

ams AG
Tobelbader Strasse 30
8141 Premstaetten
Austria, Europe
Tel: +43 (0) 3136 500 0

Please visit our website at www.ams.com

Buy our products or get free samples online at www.ams.com/Products

Technical Support is available at www.ams.com/Technical-Support

Provide feedback about this document at www.ams.com/Document-Feedback

For sales offices, distributors and representatives go to www.ams.com/Contact

For further information and requests, e-mail us at ams_sales@ams.com

Компания «Океан Электроники» предлагает заключение долгосрочных отношений при поставках импортных электронных компонентов на взаимовыгодных условиях!

Наши преимущества:

- Поставка оригинальных импортных электронных компонентов напрямую с производств Америки, Европы и Азии, а так же с крупнейших складов мира;
- Широкая линейка поставок активных и пассивных импортных электронных компонентов (более 30 млн. наименований);
- Поставка сложных, дефицитных, либо снятых с производства позиций;
- Оперативные сроки поставки под заказ (от 5 рабочих дней);
- Экспресс доставка в любую точку России;
- Помощь Конструкторского Отдела и консультации квалифицированных инженеров;
- Техническая поддержка проекта, помощь в подборе аналогов, поставка прототипов;
- Поставка электронных компонентов под контролем ВП;
- Система менеджмента качества сертифицирована по Международному стандарту ISO 9001;
- При необходимости вся продукция военного и аэрокосмического назначения проходит испытания и сертификацию в лаборатории (по согласованию с заказчиком);
- Поставка специализированных компонентов военного и аэрокосмического уровня качества (Xilinx, Altera, Analog Devices, Intersil, Interpoint, Microsemi, Actel, Aeroflex, Peregrine, VPT, Syfer, Eurofarad, Texas Instruments, MS Kennedy, Miteq, Cobham, E2V, MA-COM, Hittite, Mini-Circuits, General Dynamics и др.);

Компания «Океан Электроники» является официальным дистрибьютором и эксклюзивным представителем в России одного из крупнейших производителей разъемов военного и аэрокосмического назначения «**JONHON**», а так же официальным дистрибьютором и эксклюзивным представителем в России производителя высокотехнологичных и надежных решений для передачи СВЧ сигналов «**FORSTAR**».



JONHON

«**JONHON**» (основан в 1970 г.)

Разъемы специального, военного и аэрокосмического назначения:

(Применяются в военной, авиационной, аэрокосмической, морской, железнодорожной, горно- и нефтедобывающей отраслях промышленности)

«**FORSTAR**» (основан в 1998 г.)

ВЧ соединители, коаксиальные кабели, кабельные сборки и микроволновые компоненты:

(Применяются в телекоммуникациях гражданского и специального назначения, в средствах связи, РЛС, а так же военной, авиационной и аэрокосмической отраслях промышленности).



Телефон: 8 (812) 309-75-97 (многоканальный)

Факс: 8 (812) 320-03-32

Электронная почта: ocean@oceanchips.ru

Web: <http://oceanchips.ru/>

Адрес: 198099, г. Санкт-Петербург, ул. Калинина, д. 2, корп. 4, лит. А