

# AX8052F143

## SoC Ultra-Low Power RF-Microcontroller for RF Carrier Frequencies in the Range 27 - 1050 MHz



ON Semiconductor®

[www.onsemi.com](http://www.onsemi.com)

### OVERVIEW

#### Features

SoC Ultra-low Power Advanced Narrow-band RF-microcontroller for Wireless Communication Applications

- QFN40 Package
- Supply Range 1.8 V – 3.6 V
- –40°C to 85°C
- Ultra-low Power Consumption:
  - ◆ CPU Active Mode 150  $\mu$ A/MHz
  - ◆ Sleep Mode with 256 Byte RAM Retention and Wake-up Timer running 900 nA
  - ◆ Sleep Mode 4 kByte RAM Retention and Wake-up Timer running 1.5  $\mu$ A
  - ◆ Sleep Mode 8 kByte RAM Retention and Wake-up Timer running 2.2  $\mu$ A
  - ◆ Radio RX-mode
    - 6.5 mA @ 169 MHz
    - 9.5 mA @ 868 MHz and 433 MHz
  - ◆ Radio TX-mode at 868 MHz
    - 7.5 mA @ 0 dBm
    - 16 mA @ 10 dBm
    - 48 mA @ 16 dBm
- Temperature Sensor
- Two Analog Comparators
- Two UARTs
- One General Purpose Master/Slave SPI
- Two Channel DMA Controller
- Multi-megabit/s AES Encryption/Decryption Engine, supports AES-128, AES-192 and AES-256 with True Random Number Generator (TRNG)  
NOTE: The AES Engine and the TRNG require Software Enabling and Support.
- Ultra-low Power 10 kHz/640 Hz Wakeup Oscillator, with Automatic Calibration against a Precise Clock
- Internal 20 MHz RC Oscillator, with Automatic Calibration against a Precise Clock for Flexible System Clocking
- Low Frequency Tuning Fork Crystal Oscillator for Accurate Low Power Time Keeping
- Brown-out and Power-on-Reset Detection

#### AX8052

- Ultra-low Power MCU Core Compatible with Industry Standard 8052 Instruction Set
- Down to 500 nA Wake-up Current
- Single Cycle/Instruction for many Instructions
- 64 kByte In-system Programmable FLASH
- Code Protection Lock
- 8.25 kByte SRAM
- 3-wire (1 dedicated, 2 shared) In-circuit Debug Interface
- Three 16-bit Timers with  $\Sigma\Delta$  Output Capability
- Two 16-bit Wakeup Timers
- Two Input Captures
- Two Output Compares with PWM Capability
- 10-bit 500 ksamples/s Analog-to-Digital Converter
- High Performance Narrow-band RF Transceiver compatible to AX5043 (FSK/MSK/4-FSK/GFSK/GMSK/ASK/AFSK/FM/PSK)
  - Receiver
    - ◆ Carrier Frequencies from 27 to 1050 MHz
    - ◆ Data Rates from 0.1 kbps to 125 kbps
    - ◆ Optional Forward Error Correction (FEC)
    - ◆ Sensitivity without FEC
      - 135 dBm @ 0.1 kbps, 868 MHz, FSK
      - 126 dBm @ 1 kbps, 868 MHz, FSK
      - 117 dBm @ 10 kbps, 868 MHz, FSK
      - 107 dBm @ 100 kbps, 868 MHz, FSK
      - 105 dBm @ 125 kbps, 868 MHz, FSK
  
      - 138 dBm @ 0.1 kbps, 868 MHz, PSK
      - 130 dBm @ 1 kbps, 868 MHz, PSK
      - 120 dBm @ 10 kbps, 868 MHz, PSK
      - 109 dBm @ 100 kbps, 868 MHz, PSK
      - 108 dBm @ 125 kbps, 868 MHz, PSK

## AX8052F143

- ◆ Sensitivity with FEC
    - 137 dBm @ 0.1 kbps, 868 MHz, FSK
    - 122 dBm @ 5 kbps, 868 MHz, FSK
    - 111 dBm @ 50 kbps, 868 MHz, FSK
  - ◆ High Selectivity Receiver with up to 47 dB Adjacent Channel Rejection
  - ◆ 0 dBm Maximum Input Power
  - ◆ ±10% Data-rate Error Tolerance
  - ◆ Support for Antenna Diversity with External Antenna Switch
  - ◆ Short Preamble Modes allow the Receiver to work with as little as 16 Preamble Bits
  - ◆ Fast State Switching Times
    - 200 μs TX → RX Switching Time
    - 62 μs RX → TX Switching Time
  - Transmitter
    - ◆ Carrier Frequencies from 27 to 1050 MHz
    - ◆ Data-rates from 0.1 kbps to 125 kbps
    - ◆ High Efficiency, High Linearity Integrated Power Amplifier
    - ◆ Maximum Output Power
      - 16 dBm @ 868 MHz
      - 16 dBm @ 433 MHz
      - 16 dBm @ 169 MHz
    - ◆ Power Level programmable in 0.5 dB Steps
    - ◆ GFSK Shaping with BT=0.3 or BT=0.5
    - ◆ Unrestricted Power Ramp Shaping
  - RF Frequency Generation
    - ◆ Configurable for Usage in 27 MHz –1050 MHz Bands
    - ◆ RF Carrier Frequency and FSK Deviation Programmable in 1 Hz Steps
    - ◆ Ultra Fast Settling RF Frequency Synthesizer for Low-power Consumption
    - ◆ Fully Integrated RF Frequency Synthesizer with VCO Auto-ranging and Band-width Boost Modes for Fast Locking
    - ◆ Configurable for either Fully Integrated VCO, Internal VCO with External Inductor or Fully External VCO
    - ◆ Configurable for either Fully Integrated or External Synthesizer Loop Filter for a Large Range of Bandwidths
    - ◆ Channel Hopping up to 2000 hops/s
    - ◆ Automatic Frequency Control (AFC)
  - Flexible Antenna Interface
    - ◆ Integrated RX/TX Switching with Differential Antenna Pins
  - ◆ Mode with Differential RX Pins and Single-ended TX Pin for Usage with External PAs and for Maximum PA Efficiency at Low Output Power
  - Wakeup-on-Radio
    - ◆ 640 Hz or 10 kHz Lowest Power Wake-up Timer
    - ◆ Wake-up Time Interval programmable between 98 μs and 102 s
  - Sophisticated Radio Controller
    - ◆ Antenna Diversity and RX/TX Switch Control
    - ◆ Fully Automatic Packet Reception and Transmission without Micro-controller Intervention
    - ◆ Supports HDLC, Raw, Wireless M-Bus Frames and Arbitrary Defined Frames
    - ◆ Automatic Channel Noise Level Tracking
    - ◆ μs Resolution Timestamps for Exact Timing (eg. for Frequency Hopping Systems)
    - ◆ 256 Byte Micro-programmable FIFO, optionally supports Packet Sizes > 256 Bytes
    - ◆ Three Matching Units for Preamble Byte, Sync-word and Address
    - ◆ Ability to store RSSI, Frequency Offset and Data-rate Offset with the Packet Data
    - ◆ Multiple Receiver Parameter Sets allow the use of more aggressive Receiver Parameters during Preamble, dramatically shortening the Required Preamble Length at no Sensitivity Degradation
  - Advanced Crystal Oscillator (RF Reference Oscillator)
    - ◆ Fast Start-up and Lowest Power Steady-state XTAL Oscillator for a Wide Range of Crystals
    - ◆ Integrated Tuning Capacitors
    - ◆ Possibility of Applying an External Clock Reference (TCXO)
- ### Applications
- 27 – 1050 MHz Licensed and Unlicensed Radio Systems
- Internet of Things
  - Automatic meter reading (AMR)
  - Security applications
  - Building automation
  - Wireless networks
  - Messaging Paging
  - Compatible with: Wireless M-Bus, POCSAG, FLEX, KNX, Sigfox, Z-Wave, enOcean
  - Regulatory Regimes: EN 300 220 V2.3.1 including the Narrow-band 12.5 kHz, 20 kHz and 25 kHz Definitions; EN 300 422; FCC Part 15.247; FCC Part 15.249; FCC Part 90 6.25 kHz, 12.5 kHz and 25 kHz

# AX8052F143

## BLOCK DIAGRAM

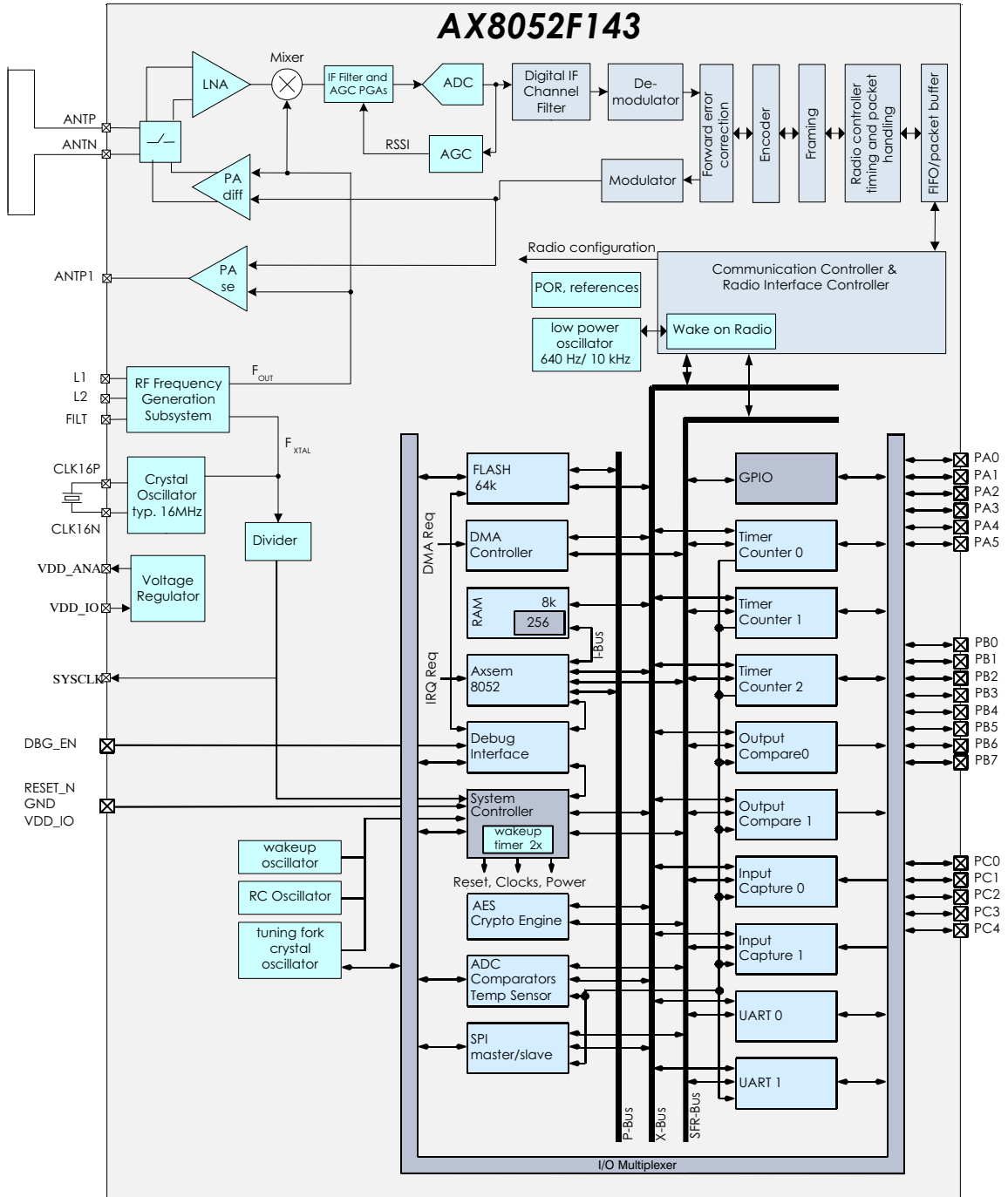


Figure 1. Functional Block Diagram of the AX8052F143

## AX8052F143

**Table 1. PIN FUNCTION DESCRIPTIONS**

| Symbol  | Pin(s)     | Type     | Description  |
|---------|------------|----------|--|
| VDD_ANA | 1          | P        | Analog power output, decouple to neighboring GND                           |
| GND     | 2          | P        | Ground, decouple to neighboring VDD_ANA                                    |
| ANTP    | 3          | A        | Differential antenna input/output  |
| ANTN    | 4          | A        | Differential antenna input/output  |
| ANTP1   | 5          | A        | Single-ended antenna output  |
| GND     | 6          | P        | Ground, decouple to neighboring VDD_ANA                                    |
| VDD_ANA | 7          | P        | Analog power output, decouple to neighboring GND                           |
| GND     | 8          | P        | Ground   |
| FILT    | 9          | A        | Optional synthesizer filter  |
| L2      | 10         | A        | Optional synthesizer inductor  |
| L1      | 11         | A        | Optional synthesizer inductor  |
| SYSCLK  | 12         | I/O/PU   | System clock output  |
| PC4     | 13         | I/O/PU   | General purpose IO   |
| PC3     | 14         | I/O/PU   | General purpose IO   |
| PC2     | 15         | I/O/PU   | General purpose IO   |
| PC1     | 16         | I/O/PU   | General purpose IO   |
| PC0     | 17         | I/O/PU   | General purpose IO   |
| PB0     | 18         | I/O/PU   | General purpose IO   |
| PB1     | 19         | I/O/PU   | General purpose IO   |
| PB2     | 20         | I/O/PU   | General purpose IO   |
| PB3     | 21         | I/O/PU   | General purpose IO   |
| PB4     | 22         | I/O/PU   | General purpose IO   |
| PB5     | 23         | I/O/PU   | General purpose IO   |
| PB6     | 24         | I/O/PU   | General purpose IO, DBG_DATA   |
| PB7     | 25         | I/O/PU   | General purpose IO, DBG_CLK  |
| DBG_EN  | 26         | I/PD     | In-circuit debugger enable   |
| RESET_N | 27         | I/PU     | Optional reset pin. If this pin is not used it must be connected to VDD_IO |
| GND     | 28         | P        | Ground   |
| VDD_IO  | 29         | P        | Unregulated power supply   |
| PA0     | 30         | I/O/A/PU | General purpose IO   |
| PA1     | 31         | I/O/A/PU | General purpose IO   |
| PA2     | 32         | I/O/A/PU | General purpose IO   |
| PA3     | 33         | I/O/A/PU | General purpose IO   |
| PA4     | 34         | I/O/A/PU | General purpose IO   |
| PA5     | 35         | I/O/A/PU | General purpose IO   |
| VDD_IO  | 36         | P        | Unregulated power supply   |
| TST1    | 37         | A        | Must be connected to GND   |
| TST2    | 38         | A        | Must be connected to GND   |
| CLK16N  | 39         | A        | Crystal oscillator input/output (RF reference oscillator)                  |
| CLK16P  | 40         | A        | Crystal oscillator input/output (RF reference oscillator)                  |
| GND     | Center pad | P        | Ground on center pad of QFN, must be connected                             |

## AX8052F143

A = analog input  
 I = digital input signal  
 O = digital output signal  
 PU = pull-up  
 I/O = digital input/output signal  
 N = not to be connected  
 P = power or ground  
 PD = pull-down

All digital inputs are Schmitt trigger inputs, digital input and output levels are LVCMOS/LVTTL compatible. Port A Pins (PA0 – PA7) must not be driven above VDD\_IO, all other digital inputs are 5 V tolerant. Pull-ups are programmable for all GPIO pins.

### Alternate Pin Functions

GPIO Pins are shared with dedicated Input/Output signals of on-chip peripherals. The following table lists the available functions on each GPIO pin.

**Table 2. ALTERNATE PIN FUNCTIONS**

| GPIO | Alternate Functions |         |         |         |        |
|------|---------------------|---------|---------|---------|--------|
|      |                     |         |         |         |        |
| PA0  | T0OUT               | IC1     | ADC0    |         |        |
| PA1  | T0CLK               | OC1     | ADC1    |         |        |
| PA2  | OC0                 | U1RX    | ADC2    | COMPI00 |        |
| PA3  | T1OUT               |         | ADC3    | LPXTALP |        |
| PA4  | T1CLK               | COMPO0  | ADC4    | LPXTALN |        |
| PA5  | IC0                 | U1TX    | ADC5    | COMPI10 |        |
| PB0  | U1TX                | IC1     | EXTIRQ0 |         |        |
| PB1  | U1RX                | OC1     |         |         |        |
| PB2  | IC0                 | T2OUT   |         |         | PWRAMP |
| PB3  | OC0                 | T2CLK   | EXTIRQ1 | DSWAKE  | ANTSEL |
| PB4  | U0TX                | T1CLK   |         |         |        |
| PB5  | U0RX                | T1OUT   |         |         |        |
| PB6  | DBG_DATA            |         |         |         |        |
| PB7  | DBG_CLK             |         |         |         |        |
| PC0  | SSEL                | T0OUT   | EXTIRQ0 |         |        |
| PC1  | SSCK                | T0CLK   | COMPO1  |         |        |
| PC2  | SMOSI               | U0TX    |         |         |        |
| PC3  | SMISO               | U0RX    | COMPO0  |         |        |
| PC4  | COMPO1              | ADCTRIG | EXTIRQ1 |         |        |

# AX8052F143

## Pinout Drawing

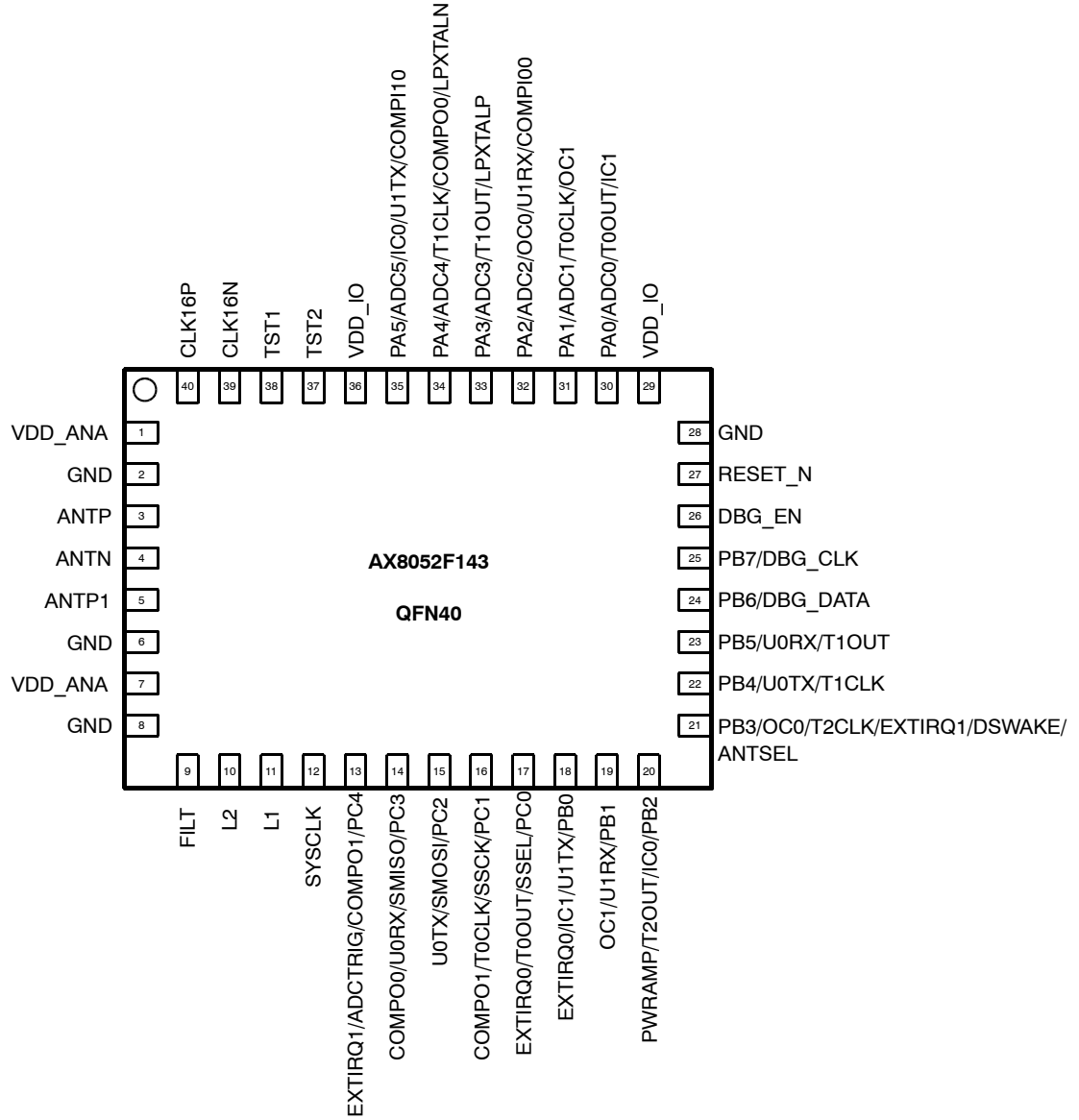


Figure 2. Pinout Drawing (Top View)

**SPECIFICATIONS**

**Table 3. ABSOLUTE MAXIMUM RATINGS**

| Symbol           | Description                                      | Condition                     | Min   | Max  | Units |
|------------------|--|-------------------------------|-------|------|-------|
| VDD_IO           | Supply voltage                                   |                               | -0.5  | 5.5  | V     |
| IDD              | Supply current                                   |                               |       | 200  | mA    |
| P <sub>tot</sub> | Total power consumption                          |                               |       | 800  | mW    |
| P <sub>i</sub>   | Absolute maximum input power at receiver input   | ANTP and ANTN pins in RX mode |       | 10   | dBm   |
| I <sub>I1</sub>  | DC current into any pin except ANTP, ANTN, ANTP1 |                               | -10   | 10   | mA    |
| I <sub>I2</sub>  | DC current into pins ANTP, ANTN, ANTP1           |                               | -100  | 100  | mA    |
| I <sub>O</sub>   | Output Current                                   |                               |       | 40   | mA    |
| V <sub>ia</sub>  | Input voltage ANTP, ANTN, ANTP1 pins             |                               | -0.5  | 5.5  | V     |
|                  | Input voltage digital pins                       |                               | -0.5  | 5.5  | V     |
| V <sub>es</sub>  | Electrostatic handling                           | HBM                           | -2000 | 2000 | V     |
| T <sub>amb</sub> | Operating temperature                            |                               | -40   | 85   | °C    |
| T <sub>stg</sub> | Storage temperature                              |                               | -65   | 150  | °C    |
| T <sub>j</sub>   | Junction Temperature                             |                               |       | 150  | °C    |

Stresses exceeding those listed in the Maximum Ratings table may damage the device. If any of these limits are exceeded, device functionality should not be assumed, damage may occur and reliability may be affected.

1. Exposure to absolute maximum rating conditions for extended periods may affect device reliability.

**DC Characteristics**

**Table 4. SUPPLIES**

| Sym                  | Description   | Condition   | Min | Typ | Max | Units |
|----------------------|---|---|-----|-----|-----|-------|
| T <sub>AMB</sub>     | Operational ambient temperature   |   | -40 | 27  | 85  | °C    |
| VDD <sub>IO</sub>    | I/O and voltage regulator supply voltage  |   | 1.8 | 3.0 | 3.6 | V     |
| VDD <sub>IO_R1</sub> | I/O voltage ramp for reset activation; Note 1   | Ramp starts at VDD_IO ≤ 0.1 V   | 0.1 |     |     | V/ms  |
| VDD <sub>IO_R2</sub> | I/O voltage ramp for reset activation; Note 1   | Ramp starts at 0.1 V < VDD_IO < 0.7 V   | 3.3 |     |     | V/ms  |
| V <sub>BOU</sub>     | Brown-out threshold   | Note 2  |     | 1.3 |     | V     |
| I <sub>DS</sub>      | Deep Sleep current  |   |     | 100 |     | nA    |
| I <sub>SL256P</sub>  | Sleep current, 256 Bytes RAM retained   | Wakeup from dedicated pin   |     | 500 |     | nA    |
| I <sub>SL256</sub>   | Sleep current, 256 Bytes RAM retained   | Wakeup Timer running at 640 Hz  |     | 900 |     | nA    |
| I <sub>SL4K</sub>    | Sleep current, 4.25 kBytes RAM retained   | Wakeup Timer running at 640 Hz  |     | 1.5 |     | μA    |
| I <sub>SL8K</sub>    | Sleep current, 8.25 kBytes RAM retained   | Wakeup Timer running at 640 Hz  |     | 2.2 |     | μA    |
| I <sub>RX</sub>      | Current consumption RX<br>RF frequency generation subsystem:<br>Internal VCO and internal loop-filter | 868 MHz, datarate 6 kbps  |     | 9.5 |     | mA    |
|                      |   | 169 MHz, datarate 6 kbps  |     | 6.5 |     |       |
|                      |   | 868 MHz, datarate 100 kbps  |     | 11  |     |       |
|                      |   | 169 MHz, datarate 100 kbps  |     | 7.5 |     |       |
| I <sub>TX-DIFF</sub> | Current consumption TX differential   | 868 MHz, 16 dBm, FSK, Note 3<br>RF frequency generation subsystem:<br>Internal VCO and internal loop-filter<br>Antenna configuration:<br>Differential PA, internal RX/TX switch |     | 48  |     | mA    |

1. If VDD\_IO ramps cannot be guaranteed, an external reset circuit is recommended, see the AX8052 Application Note: Power On Reset
2. Digital circuitry is functional down to typically 1 V.
3. Measured with optimized matching networks.

**Table 4. SUPPLIES**

| Sym                 | Description  | Condition   | Min | Typ | Max | Units      |
|---------------------|--|---|-----|-----|-----|------------|
| I <sub>RX-SE</sub>  | Current consumption TX single ended                  | 868 MHz, 0 dBm, FSK, Note 3<br>RF frequency generation subsystem:<br>Internal VCO and internal loop-filter<br>Antenna configuration:<br>Single ended PA, external RX/TX switching |     | 7.5 |     | mA         |
| I <sub>MCU</sub>    | Microcontroller running power consumption            | All peripherals disabled  |     | 150 |     | μA/<br>MHz |
| I <sub>VSUP</sub>   | Voltage supervisor                                   | Run and standby mode  |     | 85  |     | μA         |
| I <sub>LPXTAL</sub> | Crystal oscillator current (RF reference oscillator) | 16 MHz  |     | 160 |     | μA         |
| I <sub>LFXTAL</sub> | Low frequency crystal oscillator current             | 32 kHz  |     | 700 |     | nA         |
| I <sub>RCOSC</sub>  | Internal oscillator current                          | 20 MHz  |     | 210 |     | μA         |
| I <sub>LPOSC</sub>  | Internal Low Power Oscillator current                | 10 kHz  |     | 650 |     | nA         |
|                     |  | 640 Hz  |     | 210 |     | nA         |
| I <sub>ADC</sub>    | ADC current  | 311 kSample/s, DMA 5 MHz  |     | 1.1 |     | mA         |
| I <sub>WOR</sub>    | Typical wake-on-radio duty cycle current             | 1s, 100 kbps  |     | 6   |     | μA         |

1. If VDD\_IO ramps cannot be guaranteed, an external reset circuit is recommended, see the AX8052 Application Note: Power On Reset
2. Digital circuitry is functional down to typically 1 V.
3. Measured with optimized matching networks.

For information on current consumption in complex modes of operation tailored to your application, see the software AX-RadioLab.

*Note on current consumption in TX mode*

To achieve best output power the matching network has to be optimized for the desired output power and frequency. As a rule of thumb a good matching network produces about 50% efficiency with the AX8052F143 power amplifier although over 90% are theoretically possible. A typical matching network has between 1 dB and 2 dB loss (P<sub>loss</sub>). The theoretical efficiencies are the same for the single ended PA (ANTP1) and differential PA (ANTP and ANTN) therefore only one current value is shown in the table below. We recommend to use the single ended PA for low output power and the differential PA for high power. The differential PA is internally multiplexed with the LNA on pins ANTP and ANTN. Therefore constraints for the RX matching have to be considered for the differential PA matching.

The current consumption can be calculated as

$$I_{TX}[mA] = \frac{1}{PA_{efficiency}} \times 10^{\frac{P_{out}[dBm] + P_{loss}[dB]}{10}} \div 1.8V + I_{offset}$$

I<sub>offset</sub> is about 6 mA for the fully integrated VCO at 400 MHz to 1050 MHz, and 3 mA for the VCO with external inductor at 169 MHz. The following table shows calculated current consumptions versus output power for P<sub>loss</sub> = 1 dB, PA<sub>efficiency</sub> = 0.5, I<sub>offset</sub> = 6 mA at 868 MHz and I<sub>offset</sub> = 3.5 mA at 169 MHz.

**Table 5. CURRENT CONSUMPTION VS. OUTPUT POWER**

| Pout [dBm] | I <sub>txcalc</sub> [mA] |         |
|------------|--------------------------|---------|
|            | 868 MHz                  | 169 MHz |
| 0          | 7.5                      | 4.5     |
| 1          | 7.9                      | 4.9     |
| 2          | 8.4                      | 5.4     |
| 3          | 9.0                      | 6.0     |
| 4          | 9.8                      | 6.8     |
| 5          | 10.8                     | 7.8     |
| 6          | 12.1                     | 9.1     |
| 7          | 13.7                     | 10.7    |
| 8          | 15.7                     | 12.7    |
| 9          | 18.2                     | 15.2    |
| 10         | 21.3                     | 18.3    |
| 11         | 25.3                     | 22.3    |
| 12         | 30.3                     | 27.3    |
| 13         | 36.7                     | 33.7    |
| 14         | 44.6                     | 41.6    |
| 15         | 54.6                     | 51.6    |

Both AX8052F143 power amplifiers run from the regulated VDD\_ANA supply and not directly from the battery. This has the advantage that the current and output power do not vary much over supply voltage and temperature.



Table 6. LOGIC

| Symbol                | Description                                 | Condition      | Min  | Typ  | Max    | Units |
|-----------------------|---|----------------|------|------|--------|-------|
| <b>Digital Inputs</b> |   |                |      |      |        |       |
| V <sub>T+</sub>       | Schmitt trigger low to high threshold point | VDD_IO = 3.3 V |      | 1.55 |        | V     |
| V <sub>T-</sub>       | Schmitt trigger high to low threshold point |                |      | 1.25 |        | V     |
| V <sub>IL</sub>       | Input voltage, low                          |                |      |      | 0.8    | V     |
| V <sub>IH</sub>       | Input voltage, high                         |                | 2.0  |      |        | V     |
| V <sub>IPA</sub>      | Input voltage range, Port A                 |                | -0.5 |      | VDD_IO | V     |
| V <sub>IPBC</sub>     | Input voltage range, Ports B, C             | -0.5           |      | 5.5  | V      |       |
| I <sub>L</sub>        | Input leakage current                       |                | -10  |      | 10     | μA    |
| R <sub>PU</sub>       | Programmable Pull-Up Resistance             |                |      | 65   |        | kΩ    |

**Digital Outputs**

|                 |   |                         |     |  |    |    |
|-----------------|---|-------------------------|-----|--|----|----|
| I <sub>OH</sub> | Output Current, high<br>Ports PA, PB and PC | V <sub>OH</sub> = 2.4 V | 8   |  |    | mA |
| I <sub>OL</sub> | Output Current, low<br>Ports PA, PB and PC  | V <sub>OL</sub> = 0.4 V | 8   |  |    | mA |
| I <sub>OH</sub> | Output Current, high<br>Pin SYSCLK          | V <sub>OH</sub> = 2.4 V | 4   |  |    | mA |
| I <sub>OL</sub> | Output Current, low<br>Pin SYSCLK           | V <sub>OL</sub> = 0.4 V | 4   |  |    | mA |
| I <sub>OZ</sub> | Tri-state output leakage current            |                         | -10 |  | 10 | μA |

**AC Characteristics**

Table 7. CRYSTAL OSCILLATOR (RF REFERENCE OSCILLATOR)

| Symbol                 | Description   | Condition                         | Min            | Typ            | Max             | Units |
|------------------------|---|-----------------------------------|----------------|----------------|-----------------|-------|
| f <sub>X TAL</sub>     | Crystal or frequency  | Note 1, 2, 3                      | 10             | 16             | 50              | MHz   |
| g <sub>m osc</sub>     | Oscillator transconductance range   | Self-regulated see note 4         | 0.2            |                | 20              | mS    |
| C <sub>osc</sub>       | Programmable tuning capacitors at pins<br>CLK16N and CLK16P                     | AX5043_X TALCAP = 0x00<br>default |                | 3              |                 | pF    |
|                        |   | AX5043_X TALCAP = 0x01            |                | 8.5            |                 | pF    |
|                        |   | AX5043_X TALCAP = 0xFF            |                | 40             |                 | pF    |
| C <sub>osc-lsb</sub>   | Programmable tuning capacitors,<br>increment per LSB of AX5043_X TALCAP         | AX5043_X TALCAP = 0x01<br>– 0xFF  |                | 0.5            |                 | pF    |
| f <sub>ext</sub>       | External clock input (TCXO)   | Note 2, 3, 5                      | 10             | 16             | 50              | MHz   |
| R <sub>IN osc</sub>    | Input DC impedance  |                                   | 10             |                |                 | kΩ    |
| NDIV <sub>SYSCLK</sub> | Divider ratio f <sub>SYSCLK</sub> = F <sub>X TAL</sub> / NDIV <sub>SYSCLK</sub> |                                   | 2 <sup>0</sup> | 2 <sup>4</sup> | 2 <sup>10</sup> |       |

1. Tolerances and start-up times depend on the crystal used. Depending on the RF frequency and channel spacing the IC must be calibrated to the exact crystal frequency using the readings of the register AX5043\_TRKFREQ.
2. The choice of crystal oscillator or TCXO frequency depends on the targeted regulatory regime for TX, see separate documentation on meeting regulatory requirements.
3. To avoid spurious emission, the crystal or TCXO reference frequency should be chosen so that the RF carrier frequency is not an integer multiple of the crystal or TCXO frequency.
4. The oscillator transconductance is regulated for fastest start-up time during start-up and for lowest power during steady state oscillation. This means that values depend on the crystal used.
5. If an external clock or TCXO is used, it should be input via an AC coupling at pin CLK16P with the oscillator powered up and AX5043\_X TALCAP = 000000. For detailed TCXO network recommendations depending on the TCXO output swing refer to the AX5043 Application Note: Use with a TCXO Reference Clock.

# AX8052F143

**Table 8. LOW-POWER OSCILLATOR (TRANSCEIVER WAKE ON RADIO CLOCK)**

| Symbol                | Description  | Condition   | Min | Typ  | Max  | Units |
|-----------------------|--|---|-----|------|------|-------|
| f <sub>osc-slow</sub> | Oscillator frequency slow mode<br>LPOSC FAST = 0 in<br>AX5043_LPOSCCONFIG register | No calibration  | 480 | 640  | 800  | Hz    |
|                       |  | Internal calibration vs. crystal clock has been performed | 630 | 640  | 650  |       |
| f <sub>osc-fast</sub> | Oscillator frequency fast mode<br>LPOSC FAST = 1 in<br>AX5043_LPOSCCONFIG register | No calibration  | 7.6 | 10.2 | 12.8 | kHz   |
|                       |  | Internal calibration vs. crystal clock has been performed | 9.8 | 10.2 | 10.8 |       |

**Table 9. RF FREQUENCY GENERATION SUBSYSTEM (SYNTHESIZER)**

| Symbol           | Description         | Condition   | Min | Typ | Max | Units |
|------------------|---------------------|---|-----|-----|-----|-------|
| f <sub>REF</sub> | Reference frequency | The reference frequency must be chosen so that the RF carrier frequency is not an integer multiple of the reference frequency | 10  | 16  | 50  | MHz   |

**Dividers**

|                     |                               |   |                |  |                |  |
|---------------------|-------------------------------|---|----------------|--|----------------|--|
| NDIV <sub>ref</sub> | Reference divider ratio range | Controlled directly with bits REFDIV in register AX5043_PLLVCODIV | 2 <sup>0</sup> |  | 2 <sup>3</sup> |  |
| NDIV <sub>m</sub>   | Main divider ratio range      | Controlled indirectly with register AX5043_FREQ                   | 4.5            |  | 66.5           |  |
| NDIV <sub>RF</sub>  | RF divider range              | Controlled directly with bit RFDIV in register AX5043_PLLVCODIV   | 1              |  | 2              |  |

**Charge Pump**

|                 |                     |   |     |  |      |    |
|-----------------|---------------------|---|-----|--|------|----|
| I <sub>CP</sub> | Charge pump current | Programmable in increments of 8.5 μA via register AX5043_PLLCPI | 8.5 |  | 2168 | μA |
|-----------------|---------------------|---|-----|--|------|----|

**Internal VCO (VCOSEL = 0)**

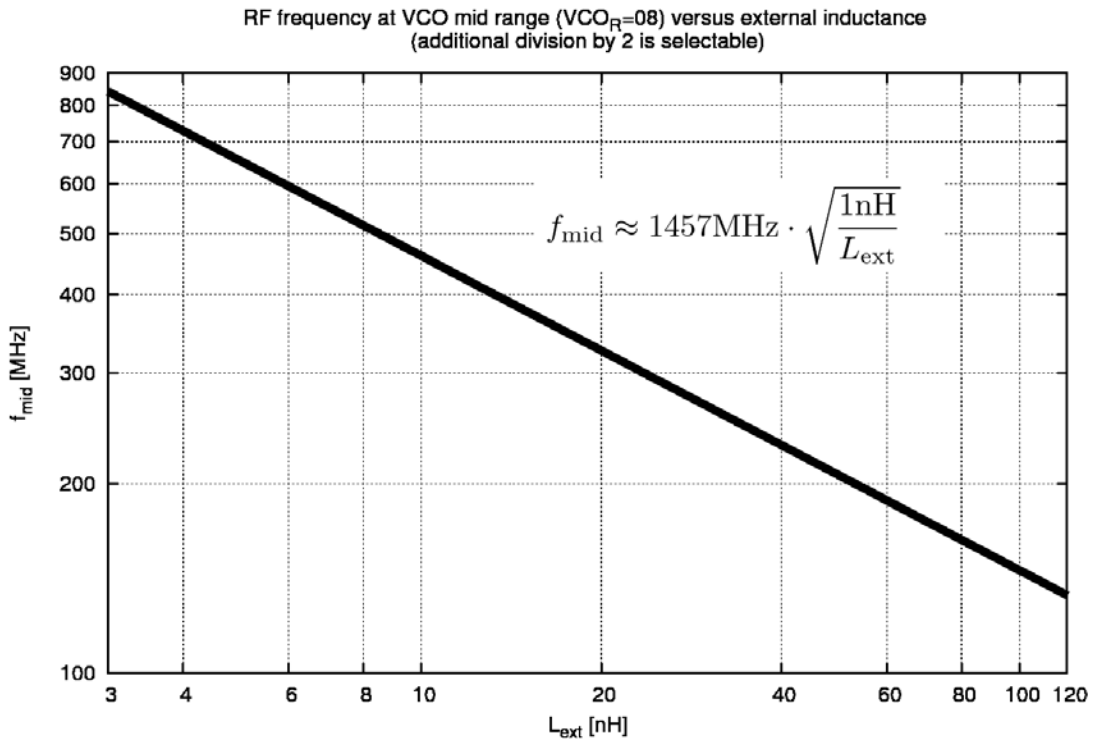
|                    |   |   |     |      |      |        |
|--------------------|---|---|-----|------|------|--------|
| f <sub>RF</sub>    | RF frequency range  | RFDIV = 1   | 400 |      | 525  | MHz    |
|                    |   | RFDIV = 0   | 800 |      | 1050 |        |
| f <sub>step</sub>  | RF frequency step   | RFDIV = 1<br>f <sub>REF</sub> = 16.000000 MHz   |     | 0.98 |      | Hz     |
| BW                 | Synthesizer loop bandwidth  | The synthesizer loop bandwidth at start-up time can be programmed with the registers AX5043_PLLLOOP and AX5043_PLLCPI.<br>For recommendations see the AX5043 Programming Manual, the AX-RadioLab software and AX5043 Application Notes on compliance with regulatory regimes. | 50  |      | 500  | kHz    |
| T <sub>start</sub> | Synthesizer start-up time if crystal oscillator and reference are running |   | 5   |      | 25   | μs     |
| PN868              | Synthesizer phase noise 868 MHz<br>f <sub>REF</sub> = 48 MHz              | 10 kHz from carrier   |     | -95  |      | dBc/Hz |
|                    |   | 1 MHz from carrier  |     | -120 |      |        |
| PN433              | Synthesizer phase noise 433 MHz<br>f <sub>REF</sub> = 48 MHz              | 10 kHz from carrier   |     | -105 |      | dBc/Hz |
|                    |   | 1 MHz from carrier  |     | -120 |      |        |

**VCO with external inductors (VCOSEL = 1, VCO2INT = 1)**

|                       |  |                     |    |      |     |        |
|-----------------------|--|---------------------|----|------|-----|--------|
| f <sub>RFrng_lo</sub> | RF frequency range<br>For choice of L <sub>ext</sub> values as well as VCO gains see Figure 3 and Figure 4   | RFDIV = 1           | 27 |      | 262 | MHz    |
| f <sub>RFrng_hi</sub> |  | RFDIV = 0           | 54 |      | 525 |        |
| PN169                 | Synthesizer phase noise 169 MHz<br>L <sub>ext</sub> =47 nH (wire wound 0603)<br>AX5043_RFDIV = 0, f <sub>REF</sub> = 16 MHz<br>Note: phase noises can be improved with higher f <sub>REF</sub> | 10 kHz from carrier |    | -97  |     | dBc/Hz |
|                       |  | 1 MHz from carrier  |    | -115 |     |        |

**Table 9. RF FREQUENCY GENERATION SUBSYSTEM (SYNTHESIZER)**

| Symbol  | Description                                      | Condition  | Min | Typ | Max  | Units |
|---|--|--|-----|-----|------|-------|
| <b>External VCO (VCOSEL = 1, VCO2INT = 0)</b> |  |  |     |     |      |       |
| $f_{RF}$                                      | RF frequency range fully external VCO            | Note: The external VCO frequency needs to be $2 \times f_{RF}$ | 27  |     | 1000 | MHz   |
| $V_{amp}$                                     | Differential input amplitude at L1, L2 terminals |  |     | 0.7 |      | V     |
| $V_{inL}$                                     | Input voltage levels at L1, L2 terminals         |  | 0   |     | 1.8  | V     |
| $V_{ctrl}$                                    | Control voltage range                            | Available at FILT in external loop filter mode                 | 0   |     | 1.8  | V     |



**Figure 3. VCO with External Inductors: Typical Frequency vs.  $L_{ext}$**

# AX8052F143

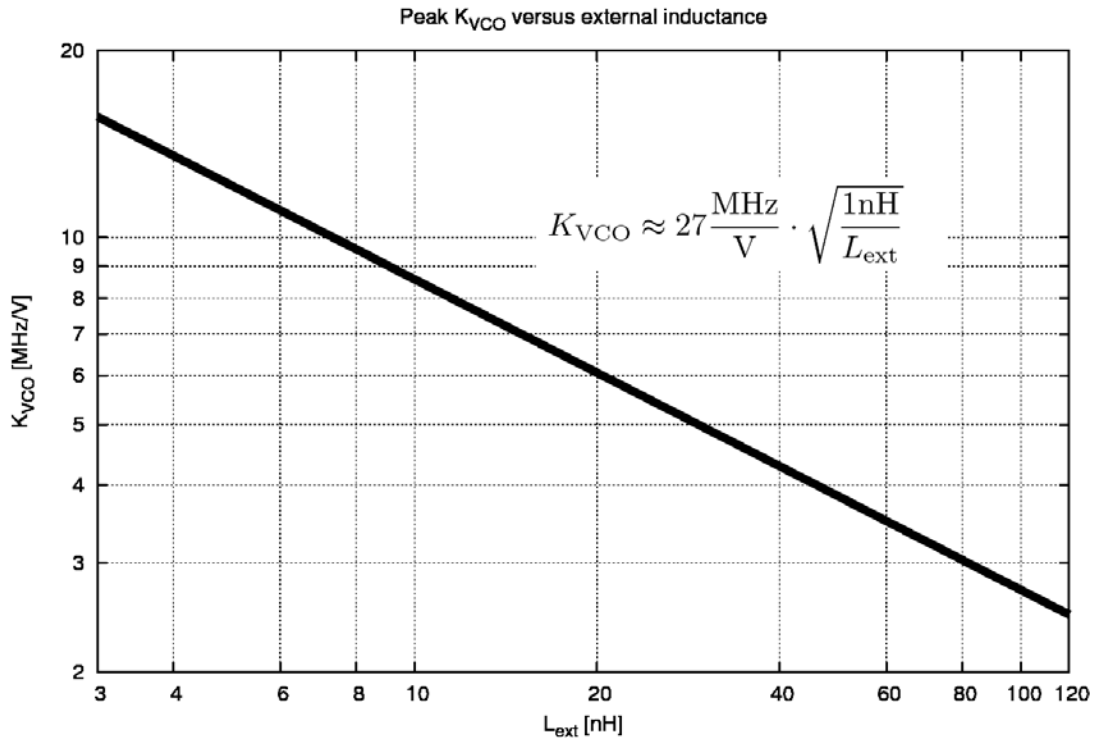


Figure 4. VCO with External Inductors: Typical  $K_{VCO}$  vs.  $L_{\text{ext}}$

The following table shows the typical frequency ranges for frequency synthesis with external VCO inductor for different inductor values.

Table 10.

| $L_{\text{ext}}$ [nH] | Freq [MHz]<br>RFDIV = 0 | Freq [MHz]<br>RFDIV = 1 | PLL Range |
|-----------------------|-------------------------|-------------------------|-----------|
| 8.2                   | 482                     | 241                     | 0         |
| 8.2                   | 437                     | 219                     | 15        |
| 10                    | 432                     | 216                     | 0         |
| 10                    | 390                     | 195                     | 15        |
| 12                    | 415                     | 208                     | 0         |
| 12                    | 377                     | 189                     | 15        |
| 15                    | 380                     | 190                     | 0         |
| 15                    | 345                     | 173                     | 15        |
| 18                    | 345                     | 173                     | 0         |
| 18                    | 313                     | 157                     | 15        |
| 22                    | 308                     | 154                     | 0         |
| 22                    | 280                     | 140                     | 14        |
| 27                    | 285                     | 143                     | 0         |
| 27                    | 258                     | 129                     | 15        |

|     |     |     |    |
|-----|-----|-----|----|
| 33  | 260 | 130 | 0  |
| 33  | 235 | 118 | 15 |
| 39  | 245 | 123 | 0  |
| 39  | 223 | 112 | 14 |
| 47  | 212 | 106 | 0  |
| 47  | 194 | 97  | 14 |
| 56  | 201 | 101 | 0  |
| 56  | 182 | 91  | 15 |
| 68  | 178 | 89  | 0  |
| 68  | 161 | 81  | 15 |
| 82  | 160 | 80  | 1  |
| 82  | 146 | 73  | 14 |
| 100 | 149 | 75  | 1  |
| 100 | 136 | 68  | 14 |
| 120 | 136 | 68  | 0  |
| 120 | 124 | 62  | 14 |

For tuning or changing of ranges a capacitor can be added in parallel to the inductor.

**Table 11. TRANSMITTER**

| Symbol                   | Description  | Condition  | Min | Typ   | Max | Units |
|--------------------------|--|--|-----|-------|-----|-------|
| SBR                      | Signal bit rate  |  | 0.1 |       | 125 | kbps  |
| PTX                      | Transmitter power @ 868 MHz  | Differential PA, 50 Ω single ended measurement at an SMA connector behind the matching network, Note 2 | -10 |       | 16  | dBm   |
|                          | Transmitter power @ 433 MHz  |  | -10 | 16    |     |       |
|                          | Transmitter power @ 169 MHz  |  | -10 | 16    |     |       |
| PTX <sub>step</sub>      | Programming step size output power   | Note 1   |     |       | 0.5 | dB    |
| dTX <sub>temp</sub>      | Transmitter power variation vs. temperature  | -40°C to +85°C<br>Note 2   |     | ± 0.5 |     | dB    |
| dTX <sub>Vdd</sub>       | Transmitter power variation vs. VDD_IO   | 1.8 to 3.6 V<br>Note 2   |     | ± 0.5 |     | dB    |
| Padj                     | Adjacent channel power<br>GFSK BT = 0.5, 500 Hz deviation,<br>1.2 kbps, 25 kHz channel spacing,<br>10 kHz channel BW | 868 MHz  |     | -44   |     | dBc   |
|                          |  | 433 MHz  |     | -51   |     |       |
| PTX <sub>868-harm2</sub> | Emission @ 2 <sup>nd</sup> harmonic  | 868 MHz, Note 2  |     | -40   |     | dBc   |
| PTX <sub>868-harm3</sub> | Emission @ 3 <sup>rd</sup> harmonic  |  |     | -60   |     |       |
| PTX <sub>433-harm2</sub> | Emission @ 2 <sup>nd</sup> harmonic  | 433 MHz, Note 2  |     | -40   |     | dBc   |
| PTX <sub>433-harm3</sub> | Emission @ 3 <sup>rd</sup> harmonic  |  |     | -40   |     |       |

$$1. P_{out} = \frac{AX5043\_TXPWRCOEFFB}{2^{12} - 1} \times P_{max}$$

- 50 Ω single ended measurements at an SMA connector behind the matching network. For recommended matching networks see Applications section.

**Table 12. RECEIVER SENSITIVITIES**

The table lists typical input sensitivities (without FEC) in dBm at the SMA connector with the complete matching network for BER=10<sup>-3</sup> at 433 or 868 MHz.

| Data rate [kbps] |                    | FSK<br>h = 0.66 | FSK<br>h = 1 | FSK<br>h = 2 | FSK<br>h = 4 | FSK<br>h = 5 | FSK<br>h = 8 | FSK<br>h = 16 | PSK  |
|------------------|--------------------|-----------------|--------------|--------------|--------------|--------------|--------------|---------------|------|
| 0.1              | Sensitivity [dBm]  | -135            | -134.5       | -132.5       | -133         | -133.5       | -133         | -132.5        | -138 |
|                  | RX Bandwidth [kHz] | 0.2             | 0.2          | 0.3          | 0.5          | 0.6          | 0.9          | 2.1           | 0.2  |
|                  | Deviation [kHz]    | 0.033           | 0.05         | 0.1          | 0.2          | 0.25         | 0.4          | 0.8           |      |
| 1                | Sensitivity [dBm]  | -126            | -125         | -123         | -123.5       | -124         | -123.5       | -122.5        | -130 |
|                  | RX Bandwidth [kHz] | 1.5             | 2            | 3            | 6            | 7            | 11           | 21            | 1    |
|                  | Deviation [kHz]    | 0.33            | 0.5          | 1            | 2            | 2.5          | 4            | 8             |      |
| 10               | Sensitivity [dBm]  | -117            | -116         | -113         | -114         | -113.5       | -113         |               | -120 |
|                  | RX Bandwidth [kHz] | 15              | 20           | 30           | 50           | 60           | 110          |               | 10   |
|                  | Deviation [kHz]    | 3.3             | 5            | 10           | 20           | 25           | 40           |               |      |
| 100              | Sensitivity [dBm]  | -107            | -105.5       |              |              |              |              |               | -109 |
|                  | RX Bandwidth [kHz] | 150             | 200          |              |              |              |              |               | 100  |
|                  | Deviation [kHz]    | 33              | 50           |              |              |              |              |               |      |
| 125              | Sensitivity [dBm]  | -105            | -104         |              |              |              |              |               | -108 |
|                  | RX Bandwidth [kHz] | 187.5           | 200          |              |              |              |              |               | 125  |
|                  | Deviation [kHz]    | 42.3            | 62.5         |              |              |              |              |               |      |

- Sensitivities are equivalent for 1010 data streams and PN9 whitened data streams.
- RX bandwidths < 0.9 kHz cannot be achieved with an 48 MHz TCXO. A 16 MHz TCXO was used for all measurements at 0.1 kbps.

Table 13. RECEIVER

| Symbol                  | Description   | Condition   | Min  | Typ   | Max | Units |
|-------------------------|---|---|------|-------|-----|-------|
| SBR                     | Signal bit rate   |   | 0.1  |       | 125 | kbps  |
| IS <sub>BER868</sub>    | Input sensitivity at BER = 10 <sup>-3</sup> for 868 MHz operation, continuous data, without FEC | FSK, h = 0.5, 100 kbps  |      | -106  |     | dBm   |
|                         |   | FSK, h = 0.5, 10 kbps   |      | -116  |     |       |
|                         |   | FSK, 500 Hz deviation, 1.2 kbps   |      | -126  |     |       |
|                         |   | PSK, 100 kbps   |      | -109  |     |       |
|                         |   | PSK, 10 kbps  |      | -120  |     |       |
|                         |   | PSK, 1 kbps   |      | -130  |     |       |
| IS <sub>BER868FEC</sub> | Input sensitivity at BER = 10 <sup>-3</sup> , for 868 MHz operation, continuous data, with FEC  | FSK, h = 0.5, 50 kbps   |      | -111  |     | dBm   |
|                         |   | FSK, h = 0.5, 5 kbps  |      | -122  |     |       |
|                         |   | FSK, 0.1 kbps   |      | -137  |     |       |
| IS <sub>PER868</sub>    | Input sensitivity at PER = 1%, for 868 MHz operation, 144 bit packet data, without FEC          | FSK, h = 0.5, 100 kbps  |      | -103  |     | dBm   |
|                         |   | FSK, h = 0.5, 10 kbps   |      | -115  |     |       |
|                         |   | FSK, 500 Hz deviation, 1.2 kbps   |      | -125  |     |       |
| IS <sub>WOR868</sub>    | Input sensitivity at PER = 1% for 868 MHz operation, WOR-mode, without FEC                      | FSK, h = 0.5, 100 kbps  |      | -102  |     | dBm   |
| IL                      | Maximum input level   | Full selectivity  |      | 0     |     | dBm   |
|                         |   | FSK, reduced selectivity  |      | 10    |     |       |
| CP <sub>1dB</sub>       | Input referred compression point  | 2 tones separated by 100 kHz  |      | -35   |     | dBm   |
| RSSIR                   | RSSI control range  | FSK, 500 Hz deviation, 1.2 kbps   | -126 |       | -46 | dB    |
| RSSIS <sub>1</sub>      | RSSI step size  | Before digital channel filter; calculated from register AX5043_AGCCOUNTER   |      | 0.625 |     | dB    |
| RSSIS <sub>2</sub>      | RSSI step size  | Behind digital channel filter; calculated from registers AX5043_AGCCOUNTER, AX5043_TRKAMPL  |      | 0.1   |     | dB    |
| RSSIS <sub>3</sub>      | RSSI step size  | Behind digital channel filter; reading register AX5043_RSSI   |      | 1     |     | dB    |
| SEL <sub>868</sub>      | Adjacent channel suppression  | 25 kHz channels, Note 1   |      | 45    |     | dB    |
|                         |   | 100 kHz channels, Note 1  |      | 47    |     |       |
| BLK <sub>868</sub>      | Blocking at ± 10 MHz offset   | Note 2  |      | 78    |     | dB    |
| R <sub>AFC</sub>        | AFC pull-in range   | The AFC pull-in range can be programmed with the AX5043_MAXRFOFFSET registers. The AFC response time can be programmed with the AX5043_FREQGAIN register. | ± 15 |       |     | %     |
| R <sub>DROFF</sub>      | Bitrate offset pull-in range  | The bitrate pull-in range can be programmed with the AX5043_MAXDROFFSET registers.  | ± 10 |       |     | %     |

1. Interferer/Channel @ BER = 10<sup>-3</sup>, channel level is +3 dB above the typical sensitivity, the interfering signal is CW; channel signal is modulated with shaping
2. Channel/Blocker @ BER = 10<sup>-3</sup>, channel level is +3 dB above the typical sensitivity, the blocker signal is CW; channel signal is modulated with shaping

**Table 14. RECEIVER AND TRANSMITTER SETTLING PHASES**

| Symbol                   | Description   | Condition   | Min | Typ                       | Max                  | Units |
|--------------------------|---|---|-----|---------------------------|----------------------|-------|
| T <sub>xtal</sub>        | XTAL settling time  | Powermodes:<br>POWERDOWN to STANDBY<br>Note that T <sub>xtal</sub> depends on the specific crystal used.  |     | 0.5                       |                      | ms    |
| T <sub>synth</sub>       | Synthesizer settling time   | Powermodes:<br>STANDBY to SYNTHTX or SYNTHRX  |     | 40                        |                      | μs    |
| T <sub>tx</sub>          | TX settling time  | Powermodes:<br>SYNTHTX to FULLTX<br>T <sub>tx</sub> is the time used for power ramping, this can be programmed to be 1 x t <sub>bit</sub> , 2 x t <sub>bit</sub> , 4 x t <sub>bit</sub> or 8 x t <sub>bit</sub> .<br>Note 1 | 0   | 1 x t <sub>bit</sub>      | 8 x t <sub>bit</sub> | μs    |
| T <sub>rx_init</sub>     | RX initialization time  |   |     | 150                       |                      | μs    |
| T <sub>rx_rssi</sub>     | RX RSSI acquisition time (after T <sub>rx_init</sub> )  | Powermodes:<br>SYNTHRX to FULLRX  |     | 80 + 3 x t <sub>bit</sub> |                      | μs    |
| T <sub>rx_preamble</sub> | RX signal acquisition time to valid data RX at full sensitivity/selectivity (after T <sub>rx_init</sub> ) | Modulation (G)FSK<br>Note 1   |     | 9 x t <sub>bit</sub>      |                      | μs    |

1. t<sub>bit</sub> depends on the datarate, e.g. for 10 kbps t<sub>bit</sub> = 100 μs

**Table 15. OVERALL STATE TRANSITION TIMES**

| Symbol               | Description   | Condition  | Min | Typ                        | Max | Units |
|----------------------|---|--|-----|----------------------------|-----|-------|
| T <sub>tx_on</sub>   | TX startup time   | Powermodes:<br>STANDBY to FULLTX<br>Note 1                                 | 40  | 40 + 1 x t <sub>bit</sub>  |     | μs    |
| T <sub>rx_on</sub>   | RX startup time   | Powermodes:<br>STANDBY to FULLRX   |     | 190                        |     | μs    |
| T <sub>rx_rssi</sub> | RX startup time to valid RSSI                                 | Powermodes:<br>STANDBY to FULLRX   |     | 270 + 3 x t <sub>bit</sub> |     | μs    |
| T <sub>rx_data</sub> | RX startup time to valid data at full sensitivity/selectivity | Modulation (G)FSK<br>Note 1  |     | 190 + 9 x t <sub>bit</sub> |     | μs    |
| T <sub>rxtx</sub>    | RX to TX switching  | Powermodes:<br>FULLRX to FULLTX  |     | 62                         |     | μs    |
| T <sub>txrx</sub>    | TX to RX switching (to preamble start)                        | Powermodes:<br>FULLTX to FULLRX  |     | 200                        |     | μs    |
| T <sub>hop</sub>     | Frequency hop   | Switch between frequency defined in register AX5043_FREQA and AX5043_FREQB |     | 30                         |     | μs    |

1. t<sub>bit</sub> depends on the datarate, e.g. for 10 kbps t<sub>bit</sub> = 100 μs

**Table 16. LOW FREQUENCY CRYSTAL OSCILLATOR**

| Symbol                | Description                 | Condition        | Min | Typ | Max | Units |
|-----------------------|-----------------------------|------------------|-----|-----|-----|-------|
| f <sub>LPXTAL</sub>   | Crystal frequency           |                  |     | 32  | 150 | kHz   |
| gm <sub>lpxosc</sub>  | Transconductance oscillator | LPXOSCGM = 00110 |     | 3.5 |     | μs    |
|                       |                             | LPXOSCGM = 01000 |     | 4.6 |     |       |
|                       |                             | LPXOSCGM = 01100 |     | 6.9 |     |       |
|                       |                             | LPXOSCGM = 10000 |     | 9.1 |     |       |
| RIN <sub>lpxosc</sub> | Input DC impedance          |                  | 10  |     |     | MΩ    |

**Table 17. INTERNAL LOW POWER OSCILLATOR**

| Symbol             | Description           | Condition  | Min   | Typ   | Max   | Units |
|--------------------|-----------------------|--|-------|-------|-------|-------|
| f <sub>LPOSC</sub> | Oscillation Frequency | LPOSCFAST = 0<br>Factory calibration applied.<br>Over the full temperature and voltage range | 630   | 640   | 650   | Hz    |
|                    |                       | LPOSCFAST = 1<br>Factory calibration applied<br>Over the full temperature and voltage range  | 10.08 | 10.24 | 10.39 | kHz   |

**Table 18. INTERNAL RC OSCILLATOR**

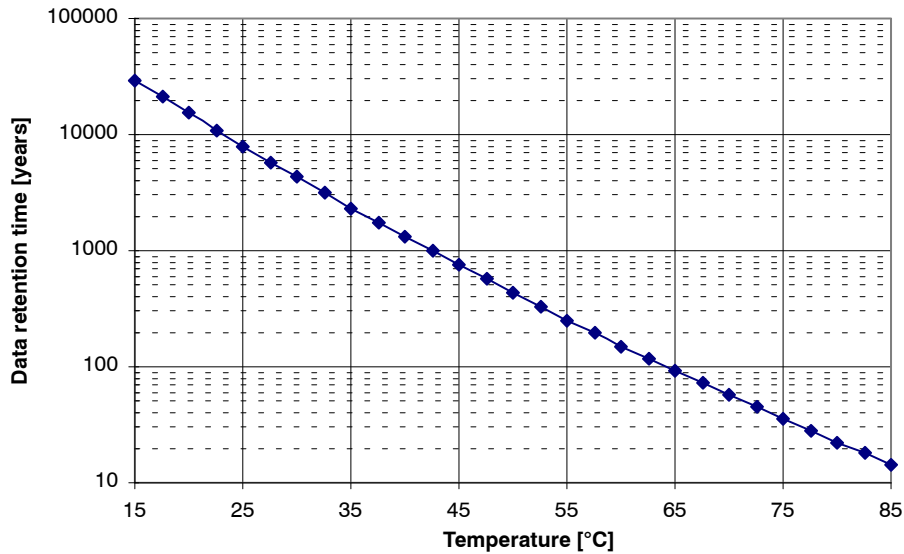
| Symbol                | Description           | Condition   | Min  | Typ | Max  | Units |
|-----------------------|-----------------------|---|------|-----|------|-------|
| f <sub>LFRCPOSC</sub> | Oscillation Frequency | Factory calibration applied.<br>Over the full temperature and voltage range | 19.8 | 20  | 20.2 | MHz   |

**Table 19. MICROCONTROLLER**

| Symbol                           | Description                   | Condition  | Min    | Typ     | Max | Units  |
|----------------------------------|-------------------------------|--|--------|---------|-----|--------|
| T <sub>SYCLKL</sub>              | SYCLK Low                     |  | 27     |         |     | ns     |
| T <sub>SYCLKH</sub>              | SYCLK High                    |  | 21     |         |     | ns     |
| T <sub>SYCLKP</sub>              | SYCLK Period                  |  | 47     |         |     | ns     |
| T <sub>FLWR</sub>                | FLASH Write Time              | 2 Bytes  |        | 20      |     | μs     |
| T <sub>FLPE</sub>                | FLASH Page Erase              | 1 kBytes   |        | 2       |     | ms     |
| T <sub>FLE</sub>                 | FLASH Secure Erase            | 64 kBytes  |        | 10      |     | ms     |
| T <sub>FLEND</sub>               | FLASH Endurance: Erase Cycles |  | 10 000 | 100 000 |     | Cycles |
| T <sub>FLRE<sub>room</sub></sub> | FLASH Data Retention          | 25°C<br>See Figure 5 for the lower limit set by the memory qualification | 100    |         |     | Years  |
| T <sub>FLRE<sub>hot</sub></sub>  |                               | 85°C<br>See Figure 5 for the lower limit set by the memory qualification | 10     |         |     |        |



# AX8052F143



**Figure 5. FLASH Memory Qualification Limit for Data Retention after 10k Erase Cycles**

**Table 20. ADC / COMPARATOR / TEMPERATURE SENSOR**

| Symbol              | Description   | Condition | Min  | Typ  | Max  | Units |
|---------------------|---|-----------|------|------|------|-------|
| ADCSR               | ADC sampling rate GPADC mode                                  |           | 30   |      | 500  | kHz   |
| ADCSR_T             | ADC sampling rate temperature sensor mode                     |           | 10   | 15.6 | 30   | kHz   |
| ADCRES              | ADC resolution  |           |      | 10   |      | Bits  |
| V <sub>ADCREf</sub> | ADC reference voltage & comparator internal reference voltage |           | 0.95 | 1    | 1.05 | V     |
| Z <sub>ADC00</sub>  | Input capacitance   |           |      |      | 2.5  | pF    |
| DNL                 | Differential nonlinearity                                     |           |      | ± 1  |      | LSB   |
| INL                 | Integral nonlinearity   |           |      | ± 1  |      | LSB   |
| OFF                 | Offset  |           |      | 3    |      | LSB   |
| GAIN_ERR            | Gain error  |           |      | 0.8  |      | %     |

**ADC in Differential Mode**

|                        |  |          |      |  |        |    |
|------------------------|--|----------|------|--|--------|----|
| V <sub>ABS_DIFF</sub>  | Absolute voltages & common mode voltage in differential mode at each input |          | 0    |  | VDD_IO | V  |
| V <sub>FS_DIFF01</sub> | Full swing input for differential signals                                  | Gain x1  | -500 |  | 500    | mV |
| V <sub>FS_DIFF10</sub> |  | Gain x10 | -50  |  | 50     | mV |

**ADC in Single Ended Mode**

|                      |   |         |   |     |        |   |
|----------------------|---|---------|---|-----|--------|---|
| V <sub>MID_SE</sub>  | Mid code input voltage in single ended mode |         |   | 0.5 |        | V |
| V <sub>IN_SE00</sub> | Input voltage in single ended mode          |         | 0 |     | VDD_IO | V |
| V <sub>FS_SE01</sub> | Full swing input for single ended signals   | Gain x1 | 0 |     | 1      | V |

**Comparators**

|                       |                                   |  |   |  |              |    |
|-----------------------|-----------------------------------|--|---|--|--------------|----|
| V <sub>COMP_ABS</sub> | Comparator absolute input voltage |  | 0 |  | VDD_IO       | V  |
| V <sub>COMP_COM</sub> | Comparator input common mode      |  | 0 |  | VDD_IO - 0.8 | V  |
| V <sub>COMPOFF</sub>  | Comparator input offset voltage   |  |   |  | 20           | mV |

**Temperature Sensor**

|                      |                        |                             |     |        |    |        |
|----------------------|------------------------|-----------------------------|-----|--------|----|--------|
| T <sub>RNG</sub>     | Temperature range      |                             | -40 |        | 85 | °C     |
| T <sub>RES</sub>     | Temperature resolution |                             |     | 0.1607 |    | °C/LSB |
| T <sub>ERR_CAL</sub> | Temperature error      | Factory calibration applied | -2  |        | 2  | °C     |

## CIRCUIT DESCRIPTION

The AX8052F143 is a true single chip narrow-band, ultra-low power RF-microcontroller SoC for use in licensed and unlicensed bands ranging from 70 MHz to 1050 MHz. The on-chip transceiver consists of a fully integrated RF front-end with modulator and demodulator. Base band data processing is implemented in an advanced and flexible communication controller that enables user friendly communication.

The AX8052F143 contains a high speed microcontroller compatible to the industry standard 8052 instruction set. It contains 64 kBytes of FLASH and 8.25 kBytes of internal SRAM.

The AX8052F143 features 3 16-bit general purpose timers with  $\Sigma\Delta$  capability, 2 output compare units for generating PWM signals, 2 input compare units to record timings of external signals, 2 16-bit wakeup timers, a watchdog timer, 2 UARTs, a Master/Slave SPI controller, a 10-bit 500 kSample/s A/D converter, 2 analog comparators, a temperature sensor, a 2 channel DMA controller, and a dedicated AES crypto controller. Debugging is aided by a dedicated hardware debug interface controller that connects using a 3-wire protocol (1 dedicated wire, 2 shared with GPIO) to the PC hosting the debug software.

While the radio carrier/LO synthesizer can only be clocked by the crystal oscillator (carrier stability requirements dictate a high stability reference clock in the MHz range), the microcontroller and its peripherals provide extremely flexible clocking options. The system clock that clocks the microcontroller, as well as peripheral clocks, can be selected from one of the following clock sources: the crystal oscillator, an internal high speed 20MHz oscillator, an internal low speed 640 Hz/10 kHz oscillator, or the low frequency crystal oscillator. Prescalers offer additional flexibility with their programmable divide by a power of two capability. To improve the accuracy of the internal oscillators, both oscillators may be slaved to the crystal oscillator.

AX8052F143 can be operated from a 1.8 V to 3.6 V power supply over a temperature range of  $-40^{\circ}\text{C}$  to  $85^{\circ}\text{C}$ , it consumes 4 – 51 mA for transmitting, depending on the output power, 6.8 – 11 mA for receiving.

The AX8052F143 features make it an ideal interface for integration into various battery powered solutions such as ticketing or as transceiver for telemetric applications e.g. in sensors. As primary application, the transceiver is intended for UHF radio equipment in accordance with the European Telecommunication Standard Institute (ETSI) specification EN 300 220-1 and the US Federal Communications Commission (FCC) standard Title 47 CFR part 15 as well as Part 90. Additionally AX8052F143 is suited for systems targeting compliance with Wireless M-Bus standard EN 13757-4:2005. Wireless M-Bus frame support (S, T, R) is built-in.

The AX8052F143 sends and receives data in frames. This standard operation mode is called Frame Mode. Pre and post

ambles as well as checksums can be generated automatically.

AX8052F143 supports any data rate from 0.1 kbps to 125 kbps for FSK, MSK, 4-FSK, GFSK, GMSK and ASK modulations. To achieve optimum performance for specific data rates and modulation schemes several register settings to configure the AX8052F143 are necessary, they are outlined in the following, for details see the AXSEM RadioLab software which calculates the necessary register settings and the AX5043 Programming Manual.

The receiver supports multi-channel operation for all data rates and modulation schemes.

### Microcontroller

The AX8052 microcontroller core executes the industry standard 8052 instruction set. Unlike the original 8052, many instructions are executed in a single cycle. The system clock and thus the instruction rate can be programmed freely from DC to 20 MHz.

### Memory Architecture

The AX8052F143 Microcontroller features the highest bandwidth memory architecture of its class. Figure 6 shows the memory architecture. Three bus masters may initiate bus cycles:

- The AX8052 Microcontroller Core
- The Direct Memory Access (DMA) Engine
- The Advanced Encryption Standard (AES) Engine

Bus targets include:

- Two individual 4 kBytes RAM blocks located in X address space, which can be simultaneously accessed and individually shut down or retained during sleep mode
- A 256 Byte RAM located in internal address space, which is always retained during sleep mode
- A 64 kBytes FLASH memory located in code space.
- Special Function Registers (SFR) located in internal address space accessible using direct address mode instructions
- Additional Registers located in X address space (X Registers)

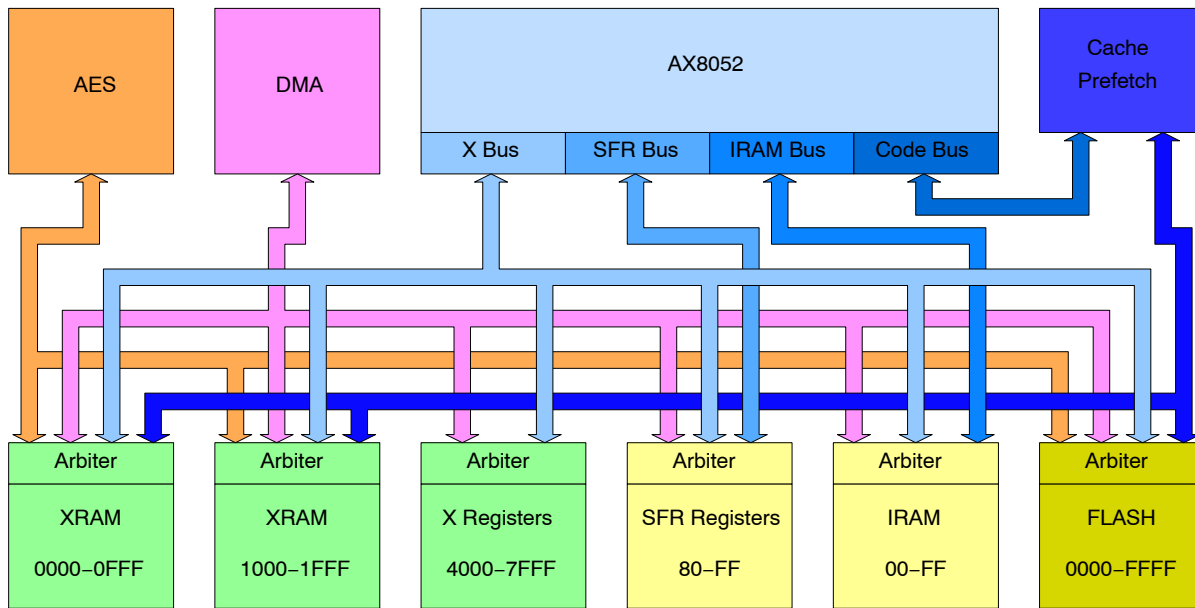
The upper half of the FLASH memory may also be accessed through the X address space. This simplifies and makes the software more efficient by reducing the need for generic pointers.

NOTE: Generic pointers include, in addition to the address, an address space tag.

SFR Registers are also accessible through X address space, enabling indirect access to SFR registers. This allows driver code for multiple identical peripherals (such as UARTs or Timers) to be shared.

The 4 word  $\times$  16 bit fully associative cache and a pre-fetch controller hide the latency of the FLASH.

# AX8052F143



**Figure 6. AX8052 Memory Architecture**

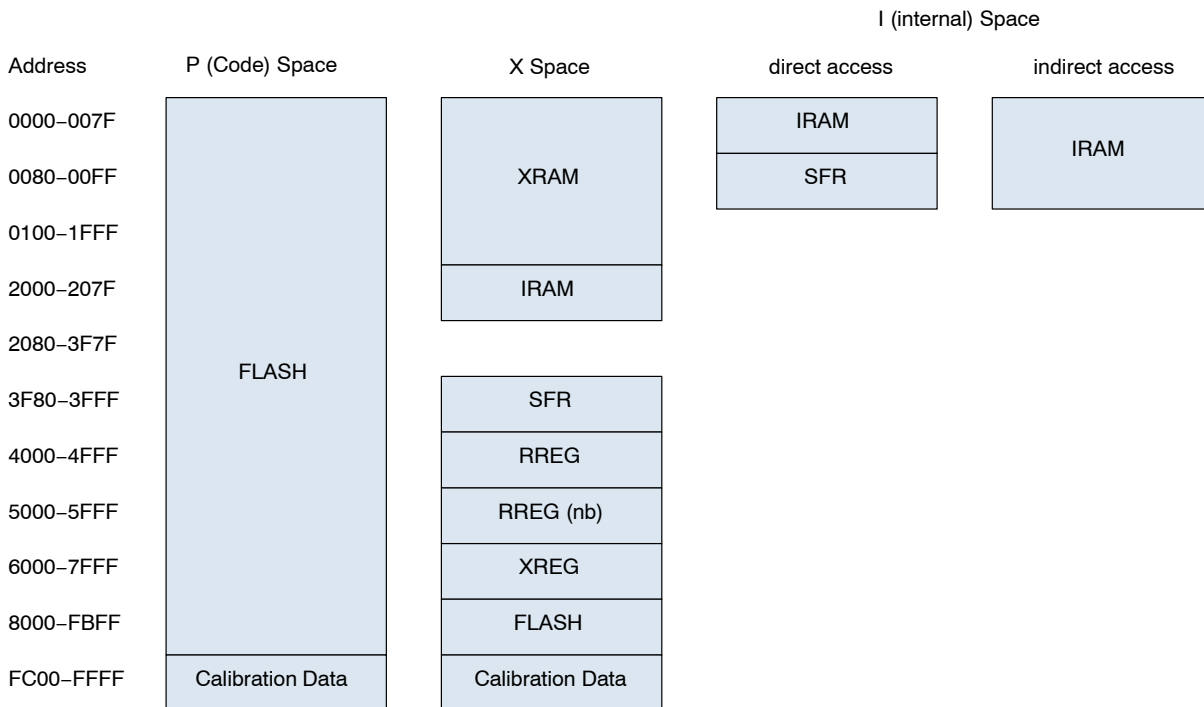
The AX8052 Memory Architecture is fully parallel. All bus masters may simultaneously access different bus targets during each system clock cycle. Each bus target includes an arbiter that resolves access conflicts. Each arbiter ensures that no bus master can be starved.

Both 4 kBytes RAM blocks may be individually retained or switched off during sleep mode. The 256 Byte RAM is always retained during sleep mode.

The AES engine accesses memory 16 bits at a time. It is therefore slightly faster to align its buffers on even addresses.

### Memory Map

The AX8052, like the other industry standard 8052 compatible microcontrollers, uses a Harvard architecture. Multiple address spaces are used to access code and data. Figure 7 shows the AX8052 memory map.



**Figure 7. AX8052 Memory Architecture**

## AX8052F143

The AX8052 uses P or Code Space to access its program. Code space may also be read using the MOVC instruction.

Smaller amounts of data can be placed in the Internal (see Note) or Data Space. A distinction is made in the upper half of the Data Space between direct accesses (MOV reg,addr; MOV addr,reg) and indirect accesses (MOV reg,@Ri; MOV @Ri,reg; PUSH; POP); Direct accesses are routed to the Special Function Registers, while indirect accesses are routed to the internal RAM.

**NOTE:** The origin of Internal versus External (X) Space is historical. External Space used to be outside of the chip on the original 8052 Microcontrollers.

Large amounts of data can be placed in the External or X Space. It can be accessed using the MOVX instructions. Special Function Registers, as well as additional Microcontroller Registers (XREG) and the Radio Registers (RREG) are also mapped into the X Space.

Detailed documentation of the Special Function Registers (SFR) and additional Microcontroller Registers can be found in the AX8052 Programming Manual.

The Radio Registers are documented in the AX5043 Programming Manual. Register Addresses given in the

AX5043 Programming Manual are relative to the beginning of RREG, i.e. 0x4000 must be added to these addresses. It is recommended that the AXSEM provided ax8052f143.h header file is used; Radio Registers are prefixed with AX5043\_ in the ax8052f143.h header file to avoid clashes of same-name Radio Registers with AX8052 registers.

Normally, accessing Radio Registers through the RREG address range is adequate. Since Radio Register accesses have a higher latency than other AX8052 registers, the AX8052 provides a method for non-blocking access to the Radio Registers. Accessing the RREG (nb) address range initiates a Radio Register access, but does not wait for its completion. The details of mechanism is documented in the Radio Interface section of the AX8052 Programming Manual.

The FLASH memory is organized as 64 pages of 1 kBytes each. Each page can be individually erased. The write word size is 16 Bits. The last 1 kByte page is dedicated to factory calibration data and should not be overwritten.

### *Power Management*

The microcontroller power mode can be selected independently from the transceiver. The microcontroller supports the following power modes:

**Table 21. POWER MANAGEMENT**

| PCON register | Name      | Description   |
|---------------|-----------|---|
| 00            | RUNNING   | The microcontroller and all peripherals are running. Current consumption depends on the system clock frequency and the enabled peripherals and their clock frequency.   |
| 01            | STANDBY   | The microcontroller is stopped. All register and memory contents are retained. All peripherals continue to function normally. Current consumption is determined by the enabled peripherals. STANDBY is exited when any of the enabled interrupts become active.   |
| 10            | SLEEP     | The microcontroller and its peripherals, except GPIO and the system controller, are shut down. Their register settings are lost. The internal RAM is retained. The external RAM is split into two 4 kByte blocks. Software can determine individually for both blocks whether contents of that block are to be retained or lost. SLEEP can be exited by any of the enabled GPIO or system controller interrupts. For most applications this will be a GPIO or wakeup timer interrupt. |
| 11            | DEEPSLEEP | The microcontroller, all peripherals and the transceiver are shut down. Only 4 bytes of scratch RAM are retained. DEEPSLEEP can only be exited by tying the PB3 pin low.  |

Clocking

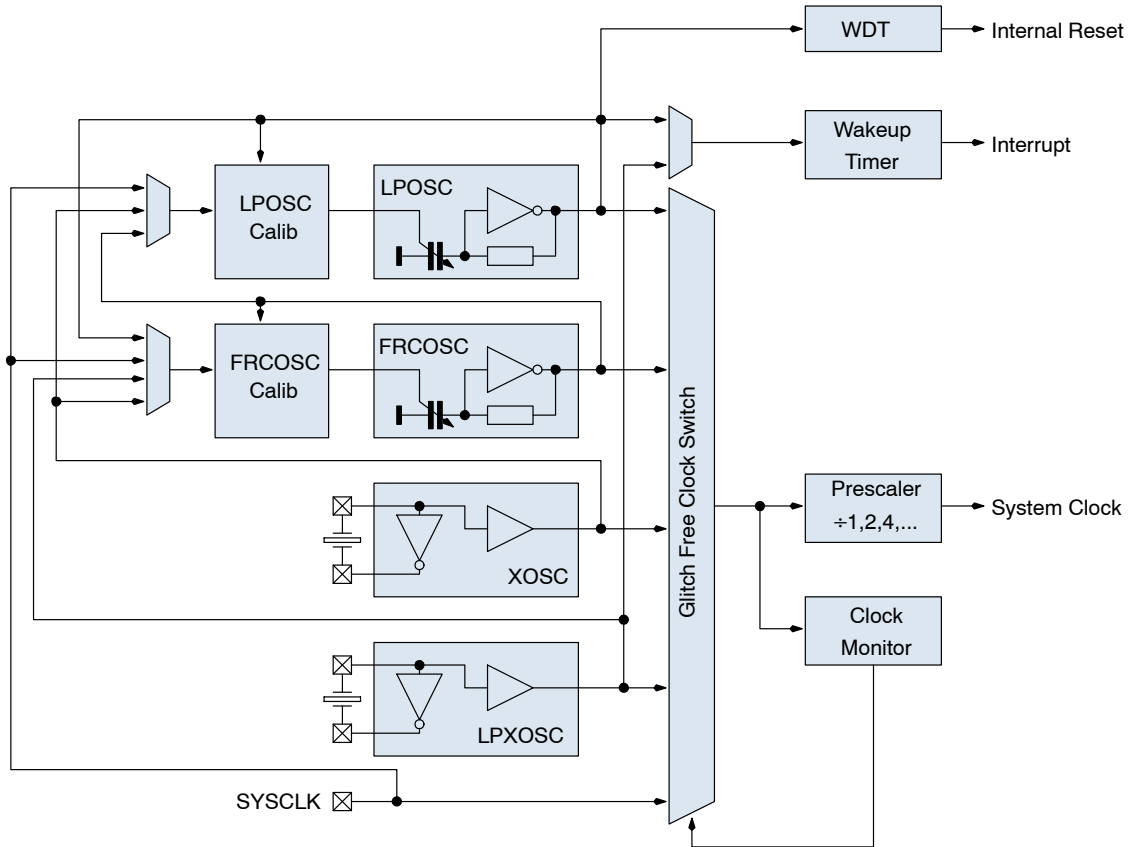


Figure 8. Clock System Diagram

The system clock can be derived from any of the following clock sources:

- The crystal oscillator (RF reference oscillator, typically 16 MHz, via SYSCLK)
- The low speed crystal oscillator (typical 32 kHz tuning fork)
- The internal high speed RC (20 MHz) oscillator
- The internal low power (640 Hz/10 kHz) oscillator

An additional pre-scaler allows the selected oscillator to be divided by a power of two. After reset, the microcontroller starts with the internal high speed RC oscillator selected and divided by two. I.e. at start-up, the microcontroller runs with 10 MHz ± 10%. Clocks may be switched any time by writing to the CLKCON register. In order to prevent clock glitches, the switching takes approximately  $2 \cdot (T_1 + T_2)$ , where  $T_1$  and  $T_2$  are the periods of the old and the new clock. Switching may take longer if the new oscillator first has to start up. Internal oscillators start up instantaneously, but crystal oscillators may take a considerable amount of time to start the oscillation. CLKSTAT can be read to determine the clock switching status.

A programmable clock monitor resets the CLKCON register when no system clock transitions are found during

a programmable time interval, thus reverts to the internal RC oscillator.

Both internal oscillators can be slaved to one of the crystal oscillators to increase the accuracy of the oscillation frequency. While the reference oscillator runs, the internal oscillator is slaved to the reference frequency by a digital frequency locked loop. When the reference oscillator is switched off, the internal oscillator continues to run unslaved with the last frequency setting.

*Reset and Interrupts*

After reset, the microcontroller starts executing at address 0x0000. Several events can lead to resetting the microcontroller core:

- POR or hardware RESET\_N pin activated and released
- Leaving SLEEP or DEEPSLEEP mode
- Watchdog Reset
- Software Reset

The reset cause can be determined by reading the PCON register.

The microcontroller supports 22 interrupt sources. Each interrupt can be individually enabled and can be programmed to have one of two possible priorities. The interrupt vectors are located at 0x0003, 0x000B, ..., 0x00AB.

### *Debugging*

A hardware debug unit considerably eases debugging compared to other 8052 microcontrollers. It allows to reliably stop the microcontroller at breakpoints even if the stack is smashed. The debug unit communicates with the host PC running the debugger using a 3 wire interface. One wire is dedicated (DBG\_EN), while two wires are shared with GPIO pins (PB6, PB7). When DBG\_EN is driven high, PB6 and PB7 convert to debug interface pins and the GPIO functionality is no longer available. A pin emulation feature however allows bits PINB[7:6] to be set and PORTB[7:6] and DIRB[7:6] to be read by the debugger software. This allows for example switches or LEDs connected to the PB6, PB7 pins to be emulated in the debugger software whenever the debugger is active.

In order to protect the intellectual property of the firmware developer, the debug interface can be locked using a developer-selectable 64-bit key. The debug interface is then disabled and can only be enabled with the knowledge of this 64-bit key. Therefore, unauthorized persons cannot read the firmware through the debug interface, but debugging is still possible for authorized persons. Secure erase can be initiated without key knowledge; secure erase ensures that the main FLASH array is completely erased before erasing the key, reverting the chip into factory state.

The DebugLink peripheral looks like an UART to the microcontroller, and allows exchange of data between the microcontroller and the host PC without disrupting program execution.

### **Timer, Output Compare and Input Capture**

The AX8052F143 features three general purpose 16-bit timers. Each timer can be clocked by the system clock, any of the available oscillators, or a dedicated input pin. The timers also feature a programmable clock inversion, a programmable prescaler that can divide by powers of two, and an optional clock synchronization logic that synchronizes the clock to the system clock. All three counters are identical and feature four different counting modes, as well as a  $\Sigma\Delta$  mode that can be used to output an analog value on a dedicated digital pin only employing a simple RC lowpass filter.

Two output compare units work in conjunction with one of the timers to generate PWM signals.

Two input capture units work in conjunction with one of the timers to measure transitions on an input signal.

For software timekeeping, two additional 16-bit wakeup timers with 4 16-bit event registers are provided, generating an interrupt on match events.

### **UART**

The AX8052F143 features two universal asynchronous receiver transmitters. They use one of the timers as baud rate generator. Word length can be programmed from 5 to 9 bits.

### **SPI Master/Slave Controller**

The AX8052F143 features a master/slave SPI controller. Both 3 and 4 wire SPI variants are supported. In master mode, any of the on-chip oscillators or the system clock may be selected as clock source. An additional prescaler with divide by two capability provides additional clocking flexibility. Shift direction, as well as clock phase and inversion, are programmable.

### **ADC, Analog Comparators and Temperature Sensor**

The AX8052F143 features a 10-bit, 500 kSample/s Analog to Digital converter. Figure 9 shows the block diagram of the ADC. The ADC supports both single ended and differential measurements. It uses an internal reference of 1 V.  $\times 1$ ,  $\times 10$  and  $\times 0.1$  gain modes are provided. The ADC may digitize signals on PA0...PA7, as well as VDD\_IO and an internal temperature sensor. The user can define four channels which are then converted sequentially and stored in four separate result registers. Each channel configuration consists of the multiplexer and the gain setting.

The AX8052F143 contains an on-chip temperature sensor. Built-in calibration logic allows the temperature sensor to be calibrated in  $^{\circ}\text{C}$ ,  $^{\circ}\text{F}$  or any other user defined temperature scale.

The AX8052F143 also features two analog comparators. Each comparator can either compare two voltages on dedicated PA pins, or one voltage against the internal 1 V reference. The comparator output can be routed to a dedicated digital output pin or can be read by software. The comparators are clocked with the system clock.

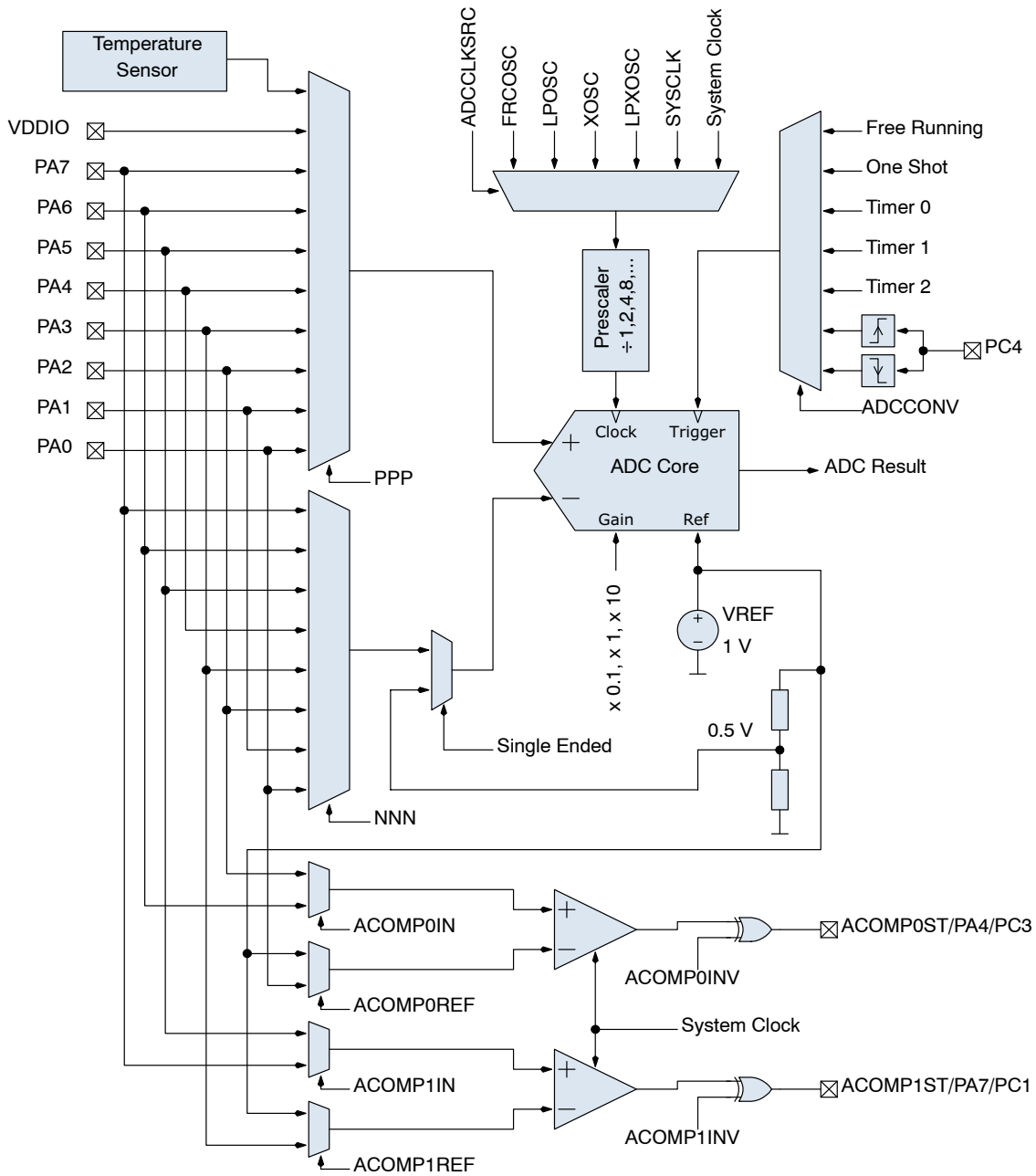


Figure 9. ADC Block Diagram

**DMA Controller**

The AX8052F143 features a dual channel DMA engine. Each DMA channel can either transfer data from XRAM to almost any peripheral on chip, or from almost any peripheral to XRAM. Both channels may also be cross-linked for memory-memory transfers. The DMA channels use buffer descriptors to find the buffers where data is to be retrieved or placed, thus enabling very flexible buffering strategies.

The DMA channels access XRAM in a cycle steal fashion. They access XRAM whenever XRAM is not used by the microcontroller. Their priority is lower than the microcontroller, thus interfering very little with the

microcontroller. Additional logic prevents starvation of the DMA controller.

**AES Engine**

The AX8052F143 contains a dedicated engine for the government mandated Advanced Encryption Standard (AES). It features a dedicated DMA engine and reads input data as well as key stream data from the XRAM, and writes output data into a programmable buffer in the XRAM. The round number is programmable; the chip therefore supports AES-128, AES-192, and AES-256, as well as higher security proprietary variants. Keystream (key expansion) is

performed in software, adding to the flexibility of the AES engine. ECB (electronic codebook), CFB (cipher feedback) and OFB (output feedback) modes are directly supported without software intervention.

#### **Crystal Oscillator and TCXO Interface (RF Reference Oscillator)**

The AX8052F143 is normally operated with an external TCXO, which is required by most narrow-band regulation with a tolerance of 0.5 ppm to 1.5 ppm depending on the regulation. The on-chip crystal oscillator allows the use of an inexpensive quartz crystal as the RF generation subsystem's timing reference when possible from a regulatory point of view.

A wide range of crystal frequencies can be handled by the crystal oscillator circuit. As the reference frequency impacts both the spectral performance of the transmitter as well as the current consumption of the receiver, the choice of reference frequency should be made according to the regulatory regime targeted by the application. Application Notes for usage of AX5043 in compliance with various regulatory regimes also apply to AX8052F143.

The crystal or TCXO reference frequency should be chosen so that the RF carrier frequency is not an integer multiple of the crystal or TCXO frequency.

The oscillator circuit is enabled by programming the AX5043\_PWRMODE register. At power-up it is enabled.

To adjust the circuit's characteristics to the quartz crystal being used, without using additional external components, the tuning capacitance of the crystal oscillator can be programmed. The transconductance of the oscillator is automatically regulated, to allow for fastest start-up times together with lowest power operation during steady-state oscillation.

The integrated programmable tuning capacitor bank makes it possible to connect the oscillator directly to pins CLK16N and CLK16P without the need for external capacitors. It is programmed using bits XTALCAP[5:0] in register AX5043\_XTALCAP.

To synchronize the receiver frequency to a carrier signal, the oscillator frequency could be tuned using the capacitor bank however, the recommended method to implement frequency synchronization is to make use of the high resolution RF frequency generation sub-system together with the Automatic Frequency Control, both are described further down.

Alternatively a single ended reference (TXCO, CXO) may be used. The CMOS levels should be applied to CLK16P via an AC coupling with the crystal oscillator enabled. For detailed TCXO network recommendations depending on TCXO output swing refer to the AX5043 Application Note: Use with a TCXO Reference Clock.

#### **Low Power Oscillator and Wake on Radio (WOR) Mode**

The AX8052F143 transceiver features an internal lowest power fully integrated oscillator. In default mode the frequency of oscillation is 640 Hz  $\pm$  1.5%, in fast mode it is 10.2 kHz  $\pm$  1.5%.

If Wake on Radio Mode is enabled, the receiver wakes up periodically at a user selectable interval, and checks for a radio signal on the selected channel. If no signal is detected, the receiver shuts down again. If a radio signal is detected, and a valid packet is received, the microcontroller is alerted by asserting an interrupt.

#### **SYSCCLK Output**

The SYSCCLK pin outputs the RF reference clock signal divided by a programmable integer. Divisions from 1 to 2048 are possible. For divider ratios > 1 the duty cycle is 50%. Bits SYSCCLK[3:0] in the AX5043\_PINCFG1 register set the divider ratio. The SYSCCLK output can be disabled.

#### **Power-on-Reset (POR) and RESET\_N Input**

AX8052F143 has an integrated power-on-reset block which is edge sensitive to VDD\_IO. For many common application cases no external reset circuitry is required. However, if VDD\_IO ramps cannot be guaranteed, an external reset circuit is recommended. For detailed recommendations and requirements see the AX8052 Application Note: Power On Reset.

After POR or reset all registers are set to their default values.

The RESET\_N pin contains a weak pull-up. However, it is strongly recommended to connect the RESET\_N pin to VDD\_IO if not used, for additional robustness.

The AX8052F143 can be reset by software as well. The microcontroller is reset by writing 1 to the SWRESET bit of the PCON register. The transceiver can be reset by first writing 1 and then 0 to the RST bit in the AX5043\_PWRMODE register.



Ports

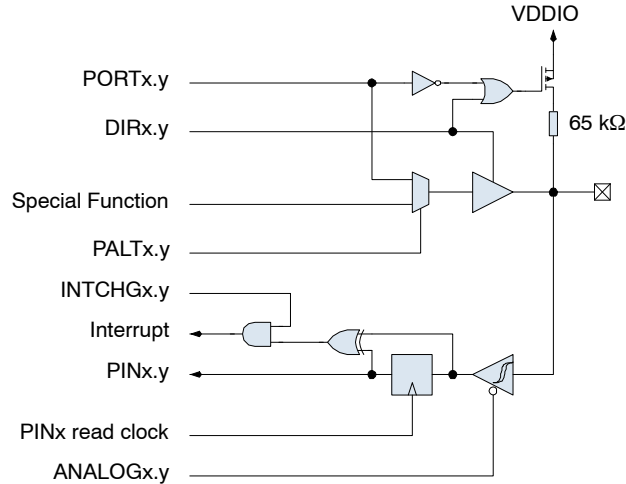


Figure 10. Port Pin Schematic

Figure 10 shows the GPIO logic. The DIR register bit determines whether the port pin acts as an output (1) or an input (0).

If configured as an output, the PALT register bit determines whether the port pin is connected to a peripheral output (1), or used as a GPIO pin (0). In the latter case, the PORT register bit determines the port pin drive value.

If configured as an input, the PORT register bit determines whether a pull-up resistor is enabled (1) or disabled (0). Inputs have chmitt-trigger characteristic. Port A inputs may be disabled by setting the ANALOGA register bit; this prevents additional current consumption if the voltage level of the port pin is mid-way between logic low and logic high, when the pin is used as an analog input.

Port A, B and C pins may interrupt the microcontroller if their level changes. The INTCHG register bit enables the interrupt. The PIN register bit reflects the value of the port pin. Reading the PIN register also resets the interrupt if interrupt on change is enabled.

*PWRAMP and ANTSEL*

PWRAMP functionality is available on PB2 if PALTRADIO bit 6 and DIRB bit 2 are set. ANTSEL functionality is available on PB3 if PALTRADIO bit 7 and DIRB bit 3 are set. If these pins should be set to high-impedance, it must be done by clearing the corresponding DIRB bit, not by setting AX5043\_PINFUNCPWRAMP or AX5043\_PINFUNCANTSEL to Z.

## TRANSCIVER

The transceiver block is controllable through its registers, which are mapped into the X data space of the micro-controller. The transceiver block features its own 4 word  $\times$ 10 bit FIFO. The microcontroller can either be interrupted at a programmable FIFO fill level, or one of the DMA channels can be instructed to transfer between XRAM and the transceiver FIFO.

### RF Frequency Generation Subsystem

The RF frequency generation subsystem consists of a fully integrated synthesizer, which multiplies the reference frequency from the crystal oscillator to get the desired RF frequency. The advanced architecture of the synthesizer enables frequency resolutions of 1 Hz, as well as fast settling times of 5 – 50  $\mu$ s depending on the settings (see section AC Characteristics). Fast settling times mean fast start-up and fast RX/TX switching, which enables low-power system design.

For receive operation the RF frequency is fed to the mixer, for transmit operation to the power-amplifier.

The frequency must be programmed to the desired carrier frequency.

The synthesizer loop bandwidth can be programmed, this serves three purposes:

1. Start-up time optimization, start-up is faster for higher synthesizer loop bandwidths
2. TX spectrum optimization, phase-noise at 300 kHz to 1 MHz distance from the carrier improves with lower synthesizer loop bandwidths
3. Adaptation of the bandwidth to the data-rate. For transmission of FSK and MSK it is required that the synthesizer bandwidth must be in the order of the data-rate.

### VCO

An on-chip VCO converts the control voltage generated by the charge pump and loop filter into an output frequency. This frequency is used for transmit as well as for receive operation. The frequency can be programmed in 1 Hz steps in the AX5043\_FREQ registers. For operation in the 433 MHz band, the RFDIV bit in the AX5043\_PLLVCODIV register must be programmed.

The fully integrated VCO allows to operate the device in the frequency ranges 800 – 1050 MHz and 400 – 520 MHz.

The carrier frequency range can be extended to 54 – 525 MHz and 27 – 262 MHz by using an appropriate external inductor between device pins L1 and L2. The bits VCO2INT and VCOSEL in the AX5043\_PLLVCODIV register must be set high to enter this mode.

It is also possible to use a fully external VCO by setting bits VCO2INT = 0 and VCOSEL = 1 in the AX5043\_PLLVCODIV register. A differential input at a

frequency of double the desired RF frequency must be input at device pins L1 and L2. The control voltage for the VCO can be output at device pin FILT when using external filter mode. The voltage range of this output pin is 0 – 1.8 V. This mode of operation is recommended for special applications where the phase noise requirements are not met when using the fully internal VCO or the internal VCO with external inductor.

### VCO Auto-Ranging

The AX8052F143 has an integrated auto-ranging function, which allows to set the correct VCO range for specific frequency generation subsystem settings automatically. Typically it has to be executed after power-up. The function is initiated by setting the RNG\_START bit in the AX5043\_PLLRANGINGA or AX5043\_PLLRANGINGB register. The bit is readable and a 0 indicates the end of the ranging process. Setting RNG\_START in the AX5043\_PLLRANGINGA register ranges the frequency in AX5043\_FREQA, while setting RNG\_START in the AX5043\_PLLRANGINGB register ranges the frequency in AX5043\_FREQB. The RNGERR bit indicates the correct execution of the auto-ranging. VCO auto-ranging works with the fully integrated VCO and with the internal VCO with external inductor.

### Loop Filter and Charge Pump

The AX8052F143 internal loop filter configuration together with the charge pump current sets the synthesizer loop bandwidth. The internal loop-filter has three configurations that can be programmed via the register bits FLT[1:0] in registers AX5043\_PLLLOOP or AX5043\_PLLLOOPBOOST the charge pump current can be programmed using register bits PLLCPI[7:0] in registers AX5043\_PLLCPI or AX5043\_PLLCPIBOOST. Synthesizer bandwidths are typically 50 – 500 kHz depending on the AX5043\_PLLLOOP or AX5043\_PLLLOOPBOOST settings, for details see the section: AC Characteristics.

The AX8052F143 can be setup in such a way that when the synthesizer is started, the settings in the registers AX5043\_PLLLOOPBOOST and AX5043\_PLLCPIBOOST are applied first for a programmable duration before reverting to the settings in AX5043\_PLLLOOP and AX5043\_PLLCPI. This feature enables automated fastest start-up.

Setting bits FLT[1:0] = 00 bypasses the internal loop filter and the VCO control voltage is output to an external loop filter at pin FILT. This mode of operation is recommended for achieving lower bandwidths than with the internal loop filter and for usage with a fully external VCO.

### Registers

**Table 22. RF FREQUENCY GENERATION REGISTERS**

| Register                                  | Bits     | Purpose   |
|---|----------|---|
| AX5043_PLLLOOP<br>AX5043_PLLLOOPBOOST     | FLT[1:0] | Synthesizer loop filter bandwidth and selection of external loop filter, recommended usage is to increase the bandwidth for faster settling time, bandwidth increases of factor 2 and 5 are possible. |
| AX5043_PLLCPI<br>AX5043_PLLCPIBOOST       |          | Synthesizer charge pump current, recommended usage is to decrease the bandwidth (and improve the phase-noise) for low data-rate transmissions.  |
| AX5043_PLLVCODIV                          | REFDIV   | Sets the synthesizer reference divider ratio.   |
|   | RFDIV    | Sets the synthesizer output divider ratio.  |
|   | VCOSEL   | Selects either the internal or the external VCO   |
|   | VCO2INT  | Selects either the internal VCO inductor or an external inductor between pins L1 and L2   |
| AX5043_FREQA, AX5043_FREQB                |          | Programming of the carrier frequency  |
| AX5043_PLLRANGINGA,<br>AX5043_PLLRANGINGB |          | Initiate VCO auto-ranging and check results   |

**RF Input and Output Stage (ANTP/ANTN/ANTP1)**

The AX8052F143 has two main antenna interface modes:

- Both RX and TX use differential pins ANTP and ANTN. RX/TX switching is handled internally. This mode is recommended for highest output powers, highest sensitivities and for direct connection to dipole antennas. Also see Figure 15.
- RX uses the differential antenna pins ANTP and ANTN. TX uses the single ended antenna pin ANTP1. RX/TX switching is handled externally. This can be done either with an external RX/TX switch or with a direct tie configuration. This mode is recommended for low output powers at high efficiency Figure 18 and for usage with external power amplifiers Figure 17.

Pin PB2 can be used to control an external RX/TX switch when operating the device together with an external PA (Figure 17). Pin PB3 can be used to control an external antenna switch when receiving with two antennas (Figure 19).

When antenna diversity is enabled, the radio controller will, when not in the middle of receiving a packet, periodically probe both antennas and select the antenna with the highest signal strength. The radio controller can be instructed to periodically write both RSSI values into the FIFO. Antenna diversity mode is fully automatic.

**LNA**

The LNA amplifies the differential RF signal from the antenna and buffers it to drive the I/Q mixer. An external matching network is used to adapt the antenna impedance to the IC impedance. A DC feed to GND must be provided at the antenna pins.

**PA**

In TX mode the PA drives the signal generated by the frequency generation subsystem out to either the differential antenna terminals or to the single ended antenna pin. The antenna terminals are chosen via the bits TXDIFF and TXSE in register AX5043\_MODECFGGA.

The output power of the PA is programmed via the register AX5043\_TXPWRCOEFFB.

The PA can be digitally pre-distorted for high linearity.

The output amplitude can be shaped (raised cosine), this mode is selected with bit AMPLSHAPE in register AX5043\_MODECFGGA PA ramping is programmable in increments of the bit time and can be set to 1 – 8 bit times via bits SLOWRAMP in register AX5043\_MODECFGGA.

Output power as well as harmonic content will depend on the external impedance seen by the PA.

**Digital IF Channel Filter and Demodulator**

The digital IF channel filter and the demodulator extract the data bit-stream from the incoming IF signal. They must be programmed to match the modulation scheme as well as the data-rate. Inaccurate programming will lead to loss of sensitivity.

The channel filter offers bandwidths of 995 Hz up to 221 kHz.

The AXSEM RadioLab Software calculates the necessary register settings for optimal performance. An overview of the registers involved is given in the following table as reference, for details see the AX5043 Programming Manual. The register setups typically must be done once at power-up of the device.

*Registers*

**Table 23. CHANNEL FILTER AND DEMODULATOR REGISTERS**

| Register  | Remarks  |
|---|--|
| AX5043_DECIMATION   | This register programs the bandwidth of the digital channel filter.  |
| AX5043_RXDATARATE2...<br>AX5043_RXDATARATE0   | These registers specify the receiver bit rate, relative to the channel filter bandwidth.   |
| AX5043_MAXDROFFSET2...<br>AX5043_MAXDROFFSET0   | These registers specify the maximum possible data rate offset  |
| AX5043_MAXRFOFFSET2...<br>AX5043_MAXRFOFFSET0   | These registers specify the maximum possible RF frequency offset   |
| AX5043_TIMEGAIN, AX5043_DRGAIN  | These registers specify the aggressiveness of the receiver bit timing recovery. More aggressive settings allow the receiver to synchronize with shorter preambles, at the expense of more timing jitter and thus a higher bit error rate at a given signal-to-noise ratio. |
| AX5043_MODULATION   | This register selects the modulation to be used by the transmitter and the receiver, i.e. whether ASK, FSK should be used.   |
| AX5043_PHASEGAIN, AX5043_FREQGAINA,<br>AX5043_FREQGAINB, AX5043_FREQGAINC,<br>AX5043_FREQGAIND, AX5043_AMPLGAIN | These registers control the bandwidth of the phase, frequency offset and amplitude tracking loops.   |
| AX5043_AGCGAIN  | This register controls the AGC (automatic gain control) loop slopes, and thus the speed of gain adjustments. The faster the bit-rate, the faster the AGC loop should be.   |
| AX5043_TXRATE   | These registers control the bit rate of the transmitter.   |
| AX5043_FSKDEV   | These registers control the frequency deviation of the transmitter in FSK mode. The receiver does not explicitly need to know the frequency deviation, only the channel filter bandwidth has to be set wide enough for the complete modulation to pass.                    |

**Encoder**

The encoder is located between the Framing Unit, the Demodulator and the Modulator. It can optionally transform the bit-stream in the following ways:

- It can invert the bit stream.
- It can perform differential encoding. This means that a zero is transmitted as no change in the level, and a one is transmitted as a change in the level.
- It can perform Manchester encoding. Manchester encoding ensures that the modulation has no DC content and enough transitions (changes from 0 to 1 and from 1 to 0) for the demodulator bit timing recovery to function correctly, but does so at a doubling of the data rate.
- It can perform spectral shaping (also know as whitening). Spectral shaping removes DC content of the bit stream, ensures transitions for the demodulator bit timing recovery, and makes sure that the transmitted spectrum does not have discrete lines even if the transmitted data is cyclic. It does so without adding additional bits, i.e. without changing the data rate. Spectral Shaping uses a self synchronizing feedback shift register.

The encoder is programmed using the register AX5043\_ENCODING, details and recommendations on usage are given in the AX5043 Programming Manual.

**Framing and FIFO**

Most radio systems today group data into packets. The framing unit is responsible for converting these packets into a bit-stream suitable for the modulator, and to extract packets from the continuous bit-stream arriving from the demodulator.

The Framing unit supports two different modes:

- Packet modes
- Raw modes

The microcontroller communicates with the framing unit through a 256 byte FIFO. Data in the FIFO is organized in Chunks. The chunk header encodes the length and what data is contained in the payload. Chunks may contain packet data, but also RSSI, Frequency offset, Timestamps, etc.

The AX8052F143 contains one FIFO. Its direction is switched depending on whether transmit or receive mode is selected.

The FIFO can be operated in polled or interrupt driven modes. In polled mode, the microcontroller must periodically read the FIFO status register or the FIFO count register to determine whether the FIFO needs servicing.

In interrupt mode EMPTY, NOT EMPTY, FULL, NOT FULL and programmable level interrupts are provided. Interrupts are acknowledged by removing the cause for the interrupt, i.e. by emptying or filling the FIFO.

To lower the interrupt load on the microcontroller, one of the DMA channels may be instructed to transfer data

## AX8052F143

between the transceiver FIFO and the XRAM memory. This way, much larger buffers can be realized in XRAM, and interrupts need only be serviced if the larger XRAM buffers fill or empty.

### Packet Modes

The AX8052F143 offers different packet modes. For arbitrary packet sizes HDLC is recommended since the flag and bit-stuffing mechanism. The AX8052F143 also offers packet modes with fixed packet length with a byte indicating the length of the packet.

**Table 24. HDLC PACKET STRUCTURE**

| Flag  | Address | Control     | Information                                       | FCS         | (Optional Flag) |
|-------|---------|-------------|---|-------------|-----------------|
| 8 bit | 8 bit   | 8 or 16 bit | Variable length, 0 or more bits in multiples of 8 | 16 / 32 bit | 8 bit           |

HDLC packets are delimited with flag sequences of content 0x7E.

In AX8052F143 the meaning of address and control is user defined. The Frame Check Sequence (FCS) can be programmed to be CRC-CCITT, CRC-16 or CRC-32.

**Table 25. WIRELESS M-BUS PACKET STRUCTURE**

| Preamble | L     | C     | M     | A     | FCS    | Optional Data Block<br>(optionally repeated with FCS) | FCS    |
|----------|-------|-------|-------|-------|--------|---|--------|
| variable | 8 bit | 8 bit | 8 bit | 8 bit | 16 bit | 8 – 96 bit  | 16 bit |

For details on implementing a HDLC communication as well as Wireless M-Bus please use the AXSEM RadioLab software and see the AX5043 Programming Manual.

### Raw Modes

In Raw mode, the AX8052F143 does not perform any packet delimiting or byte synchronization. It simply serializes transmit bytes and de-serializes the received bit-stream and groups it into bytes. This mode is ideal for implementing legacy protocols in software.

Raw mode with preamble match is similar to raw mode. In this mode, however, the receiver does not receive anything until it detects a user programmable bit pattern (called the preamble) in the receive bit-stream. When it detects the preamble, it aligns the de-serialization to it.

The preamble can be between 4 and 32 bits long.

### RX AGC and RSSI

AX8052F143 features three receiver signal strength indicators (RSSI):

1. RSSI before the digital IF channel filter.

The gain of the receiver is adjusted in order to keep the analog IF filter output level inside the working range of the ADC and demodulator. The register AX5043\_AGCCOUNTER contains the

In packet modes a CRC can be computed automatically.

HDLC Mode is the main framing mode of the AX8052F143. In this mode, the AX8052F143 performs automatic packet delimiting, and optional packet correctness check by inserting and checking a cyclic redundancy check (CRC) field.

NOTE: HDLC mode follows High-Level Data Link Control (HDLC, ISO 13239) protocol.

The packet structure is given in the following table.

The receiver checks the CRC, the result can be retrieved from the FIFO, the CRC is appended to the received data.

In Wireless M-Bus Mode, the packet structure is given in the following table.

NOTE: Wireless M-Bus mode follows EN13757-4

current value of the AGC and can be used as an RSSI. The step size of this RSSI is 0.625 dB. The value can be used as soon as the RF frequency generation sub-system has been programmed.

2. RSSI behind the digital IF channel filter.

The register AX5043\_RSSI contains the current value of the RSSI behind the digital IF channel filter. The step size of this RSSI is 1 dB.

3. RSSI behind the digital IF channel filter high accuracy.

The demodulator also provides amplitude information in the AX5043\_TRK\_AMPLITUDE register. By combining both the AX5043\_AGCCOUNTER and the AX5043\_TRK\_AMPLITUDE registers, a high resolution (better than 0.1 dB) RSSI value can be computed at the expense of a few arithmetic operations on the micro-controller. The AXSEM RadioLab Software calculates the necessary register settings for best performance.

### Modulator

Depending on the transmitter settings the modulator generates various inputs for the PA:

**Table 26. MODULATIONS**

| Modulation        | Bit = 0                            | Bit = 1                            | Main Lobe Bandwidth                 | Max. Bitrate |
|-------------------|------------------------------------|------------------------------------|-------------------------------------|--------------|
| ASK               | PA off                             | PA on                              | BW = BITRATE                        | 125 kBit/s   |
| FSK/MSK/GFSK/GMSK | $\Delta f = -f_{\text{deviation}}$ | $\Delta f = +f_{\text{deviation}}$ | $BW = (1 + h) \cdot \text{BITRATE}$ | 125 kBit/s   |
| PSK               | $\Delta\Phi = 0^\circ$             | $\Delta\Phi = 180^\circ$           | BW = BITRATE                        | 125 kBit/s   |

$h$  = modulation index. It is the ratio of the deviation compared to the bit-rate;  $f_{\text{deviation}} = 0.5 \cdot h \cdot \text{BITRATE}$ , AX8052F143 can demodulate signals with  $h < 32$ .

ASK = amplitude shift keying

FSK = frequency shift keying

MSK= minimum shift keying; MSK is a special case of FSK, where  $h = 0.5$ , and therefore

$f_{\text{deviation}} = 0.25 \cdot \text{BITRATE}$ ; the advantage of MSK over FSK is that it can be demodulated more robustly.

PSK = phase shift keying

All modulation schemes, except 4-FSK, are binary.

Amplitude can be shaped using a raised cosine waveform. Amplitude shaping will also be performed for constant amplitude modulation ((G)FSK, (G)MSK) for ramping up and down the PA. Amplitude shaping should always be enabled.

Frequency shaping can either be hard (FSK, MSK), or Gaussian (GMSK, GFSK), with selectable BT = 0.3 or BT = 0.5.

**Table 27. 4-FSK MODULATION**

| Modulation | DiBit = 00                          | DiBit = 01                         | DiBit = 11                         | DiBit = 10                          | Main Lobe Bandwidth                  | Max. Bitrate |
|------------|-------------------------------------|------------------------------------|------------------------------------|-------------------------------------|--------------------------------------|--------------|
| 4-FSK      | $\Delta f = -3f_{\text{deviation}}$ | $\Delta f = -f_{\text{deviation}}$ | $\Delta f = +f_{\text{deviation}}$ | $\Delta f = +3f_{\text{deviation}}$ | $BW = (1 + 3h) \cdot \text{BITRATE}$ | 125 kBit/s   |

4-FSK Frequency shaping is always hard.

$$\Delta f = \frac{\text{AX5043\_TRKRFFREQ}}{2^{32}} f_{\text{XTAL}}$$

**Automatic Frequency Control (AFC)**

The AX8052F143 features an automatic frequency tracking loop which is capable of tracking the transmitter frequency within the RX filter band width. On top of that the AX8052F143 has a frequency tracking register AX5043\_TRKRFFREQ to synchronize the receiver frequency to a carrier signal. For AFC adjustment, the frequency offset can be computed with the following formula:

**PWRMODE Register**

The AX8052F143 transceiver features its own independent power management, independent from the microcontroller. While the microcontroller power mode is controlled through the PCON register, the AX5043\_PWRMODE register controls which parts of the transceiver are operating.

**Table 28. PWRMODE REGISTER**

| AX5043_PWRMODE Register | Name      | Description  |
|-------------------------|-----------|--|
| 0000                    | POWERDOWN | All digital and analog functions, except the register file, are disabled. The core supply voltages are switched off to conserve leakage power. Register contents are preserved. Access to the FIFO is not possible and the contents are not preserved. POWERDOWN mode is only entered once the FIFO is empty.  |
| 0001                    | DEEPSLEEP | The transceiver is fully turned off. All digital and analog functions are disabled. All register contents are lost.<br>To leave DEEPSLEEP mode the pin SEL has to be pulled low. This will initiate startup and reset of the transceiver. Then the MISO line should be polled, as it will be held low during initialization and will rise to high at the end of the initialization, when the chip becomes ready for operation.<br>It is recommended to use the functions <code>ax5043_enter_deepsleep()</code> and <code>ax5043_wakeup_deepsleep()</code> provided in <code>libmf</code> |
| 0101                    | STANDBY   | The crystal oscillator and the reference are powered on; receiver and transmitter are off. Register contents are preserved and accessible.<br>Access to the FIFO is not possible and the contents are not preserved. STANDBY is only entered once the FIFO is empty.   |
| 0110                    | FIFO      | The reference is powered on. Register contents are preserved and accessible.<br>Access to the FIFO is possible and the contents are preserved.   |

**Table 28. PWRMODE REGISTER**

| AX5043_PWRMODE Register | Name                | Description   |
|-------------------------|---------------------|---|
| 1000                    | SYNTHR <sub>X</sub> | The synthesizer is running on the receive frequency. Transmitter and receiver are still off. This mode is used to let the synthesizer settle on the correct frequency for receive.  |
| 1001                    | FULLR <sub>X</sub>  | Synthesizer and receiver are running.   |
| 1011                    | WOR                 | Receiver wakeup-on-radio mode. The mode the same as POWERDOWN, but the 640 Hz internal low power oscillator is running.   |
| 1100                    | SYNHT <sub>X</sub>  | The synthesizer is running on the transmit frequency. Transmitter and receiver are still off. This mode is used to let the synthesizer settle on the correct frequency for transmit.  |
| 1101                    | FULLT <sub>X</sub>  | Synthesizer and transmitter are running. Do not switch into this mode before the synthesizer has completely settled on the transmit frequency (in SYNHT <sub>X</sub> mode), otherwise spurious spectral transmissions will occur. |

**Table 29. A TYPICAL AX5043\_PWRMODE SEQUENCE FOR A TRANSMIT SESSION**

| Step | PWRMODE            | Remarks  |
|------|--------------------|--|
| 1    | POWERDOWN          |  |
| 2    | STANDBY            | The settling time is dominated by the crystal used, typical value 3ms. |
| 3    | FULLT <sub>X</sub> | Data transmission  |
| 4    | POWERDOWN          |  |

**Table 30. A TYPICAL AX5043\_PWRMODE SEQUENCE FOR A RECEIVE SESSION**

| Step | PWRMODE [3:0]      | Remarks  |
|------|--------------------|--|
| 1    | POWERDOWN          |  |
| 2    | STANDBY            | The settling time is dominated by the crystal used, typical value 3ms. |
| 3    | FULLR <sub>X</sub> | Data reception   |
| 4    | POWERDOWN          |  |

**Voltage Regulator**

The AX8052F143 transceiver uses its own dedicated on-chip voltage regulator system to create stable supply voltages for the internal circuitry from the primary supply VDD<sub>IO</sub>. The I/O level of the digital pins is VDD<sub>IO</sub>.

Pins VDD<sub>ANA</sub> are supplied for external decoupling of the power supply used for the on-chip PA.

The voltage regulator system must be set into the appropriate state before receive or transmit operations can be initiated. This is handled automatically when programming the device modes via the AX5043\_PWRMODE register.

Register AX5043\_POWSTAT contains status bits that can be read to check if the regulated voltages are ready (bit SVIO) or if VDD<sub>IO</sub> has dropped below the brown-out level of 1.3 V (bit SSUM).

In power-down mode the core supply voltages for digital and analog functions are switched off to minimize leakage power. Most register contents are preserved but access to the FIFO is not possible and FIFO contents are lost.

In deep-sleep mode all supply voltages are switched off. All digital and analog functions are disabled. All register contents are lost.

APPLICATION INFORMATION

Typical Application Diagrams  
Connecting to Debug Adapter

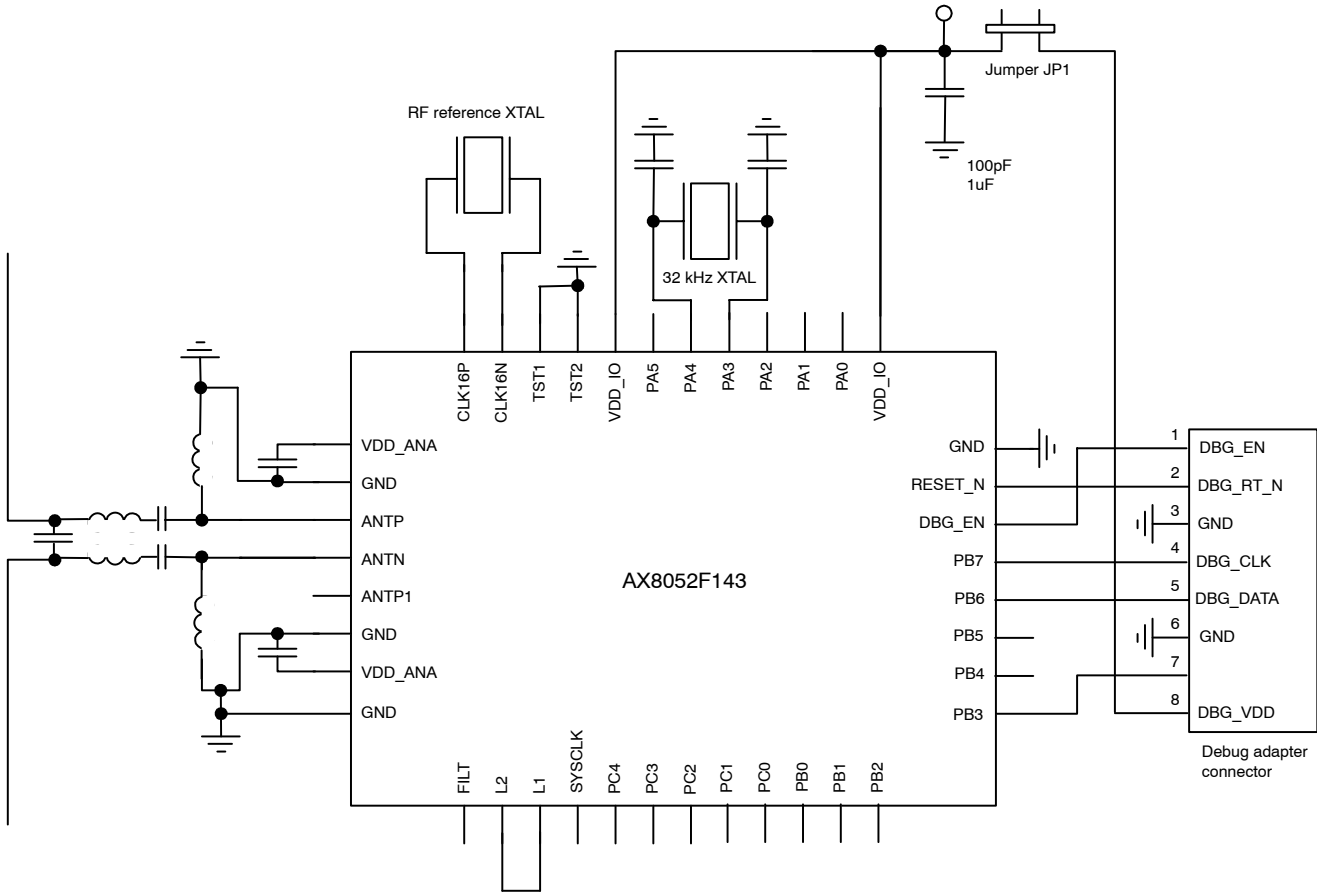


Figure 11. Typical Application Diagram with Connection to the Debug Adapter

Short Jumper JP1–1 if it is desired to supply the target board from the Debug Adapter (50 mA max). Connect the bottom exposed pad of the AX8052F143 to ground.

If the debugger is not running, PB6 and PB7 are not driven by the Debug Adapter. If the debugger is running, the PB6 and PB7 values that the software reads may be set using the Pin Emulation feature of the debugger.

PB3 is driven by the debugger only to bring the AX8052F143 out of Deep Sleep. It is high impedance otherwise.

The 32 kHz crystal is optional, the fast crystal at pins CLK16N and CLK16P is used as reference frequency for the RF RX/TX. Crystal load capacitances should be chosen according to the crystal’s datasheet. At pins CLK16N and CLK16P they the internal programmable capacitors may be used, at pins PA3 and PA4 capacitors must be connected externally.



Match to 50 Ω for Differential Antenna Pins  
(868 / 433 MHz RX / TX Operation)

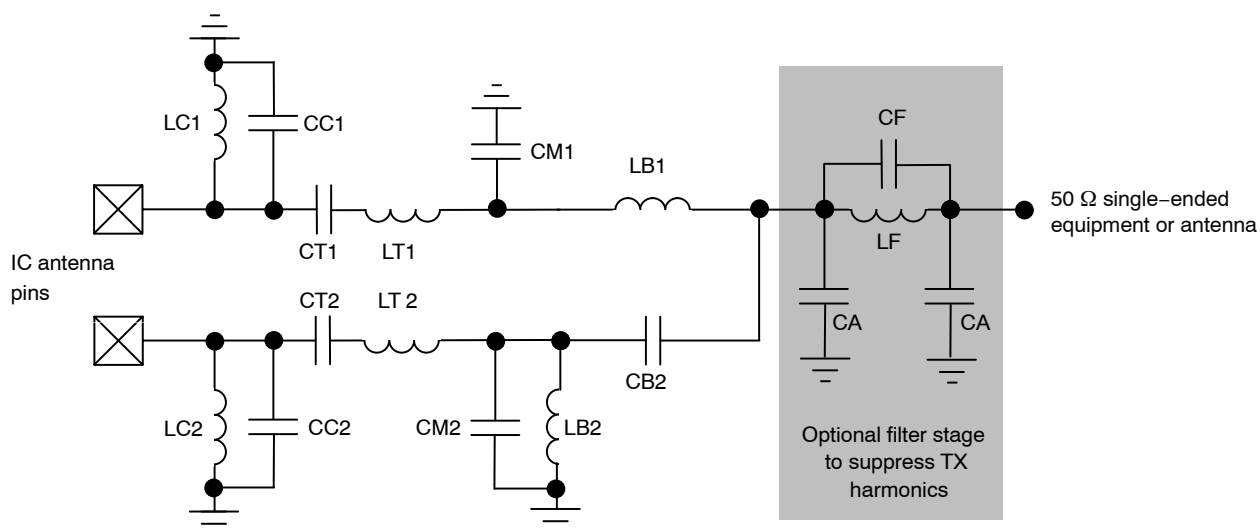


Figure 12. Structure of the Differential Antenna Interface for TX/RX Operation to 50 Ω Single-ended Equipment or Antenna

Table 31. TYPICAL COMPONENT VALUES

| Frequency Band | LC <sub>1,2</sub> [nH] | CC <sub>1,2</sub> [pF] | CT <sub>1,2</sub> [pF] | LT <sub>1,2</sub> [nH] | CM <sub>1</sub> [pF] | CM <sub>2</sub> [pF] | LB <sub>1,2</sub> [nH] | CB <sub>2</sub> [pF] | CF [pF] optional | LF [nH] optional | CA [pF] optional |
|----------------|------------------------|------------------------|------------------------|------------------------|----------------------|----------------------|------------------------|----------------------|------------------|------------------|------------------|
| 868 / 915 MHz  | 18                     | nc                     | 2.7                    | 18                     | 6.2                  | 3.6                  | 12                     | 2.7                  | nc               | 0 Ω              | nc               |
| 433 MHz        | 100                    | nc                     | 4.3                    | 43                     | 11                   | 5.6                  | 27                     | 5.1                  | nc               | 0 Ω              | nc               |
| 470 MHz        | 100                    | nc                     | 3.9                    | 33                     | 4.7                  | nc                   | 22                     | 4.7                  | nc               | 0 Ω              | nc               |
| 169 MHz        | 150                    | 10                     | 10                     | 120                    | 12                   | nc                   | 68                     | 12                   | 6.8              | 30               | 27               |

Match to 50 Ω for Single-ended Antenna Pin  
(868 / 915 / 433 MHz TX Operation)

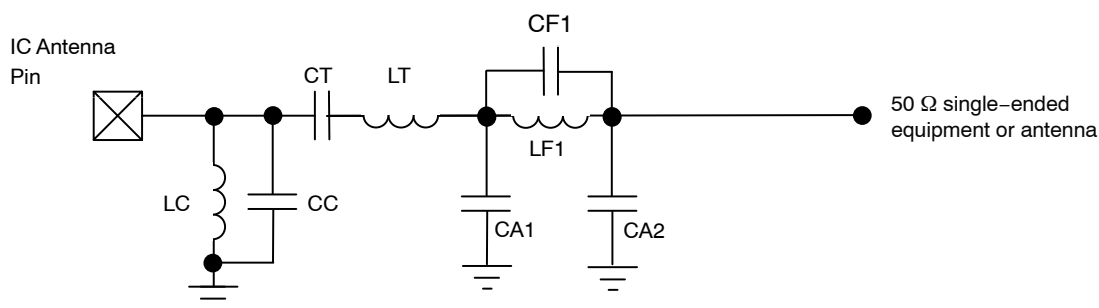


Figure 13. Structure of the Single-ended Antenna Interface for TX Operation to 50 Ω Single-ended Equipment or Antenna

Table 32. TYPICAL COMPONENT VALUES

| Frequency Band | LC [nH] | CC [pF] | CT [pF] | LT [nH] | CF <sub>1</sub> [pF] | LF <sub>1</sub> [nH] | CA <sub>1</sub> [pF] | CA <sub>2</sub> [pF] |
|----------------|---------|---------|---------|---------|----------------------|----------------------|----------------------|----------------------|
| 868 / 915 MHz  | 18      | nc      | 2.7     | 18      | 3.6                  | 2.2                  | 3.6                  | nc                   |
| 433 MHz        | 100     | nc      | 4.3     | 43      | 6.8                  | 4.7                  | 5.6                  | nc                   |

# AX8052F143

Match to 50  $\Omega$  for Single-ended Antenna Pin  
(169 MHz TX Operation)

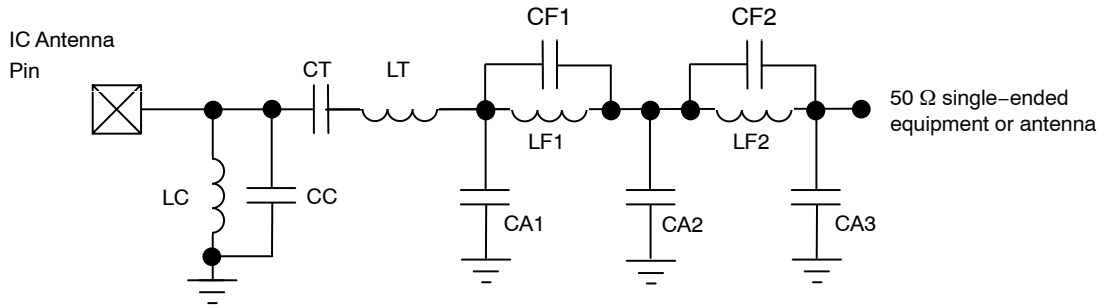


Figure 14. Structure of the Single-ended Antenna Interface for TX Operation to 50  $\Omega$  Single-ended Equipment or Antenna

Table 33. TYPICAL COMPONENT VALUES

| Frequency Band | LC [nH] | CC [pF] | CT [pF] | LT [nH] | CF1 [pF] | LF1 [nH] | CF2 [pF] | LF2 [nH] | CA1 [pF] | CA2 [pF] | CA3 [pF] |
|----------------|---------|---------|---------|---------|----------|----------|----------|----------|----------|----------|----------|
| 169 MHz        | 150     | 2.2     | 22      | 120     | 4.7      | 39       | 1.8      | 47       | 33       | 47       | 15       |

Using a Dipole Antenna and the Internal TX/RX Switch

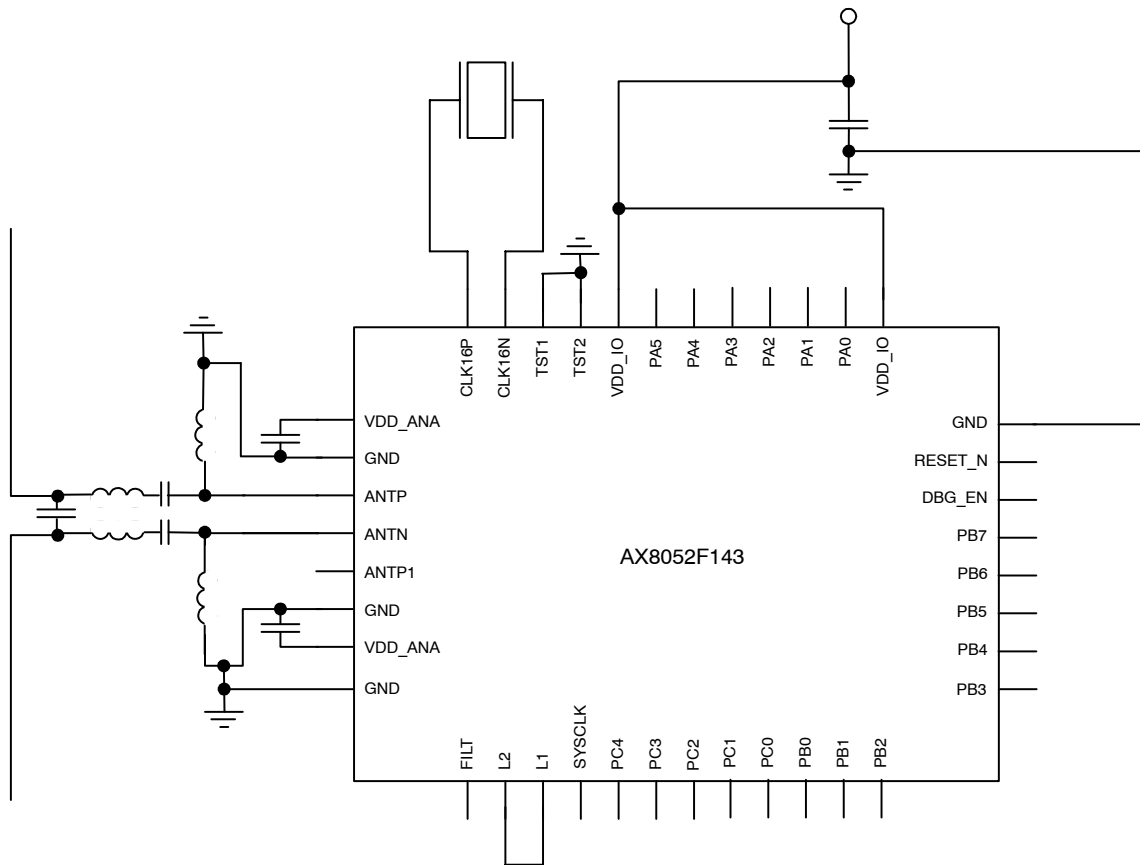


Figure 15. Typical Application Diagram with Dipole Antenna and Internal TX/RX Switch

# AX8052F143

Using a Single-ended Antenna and the Internal TX/RX Switch

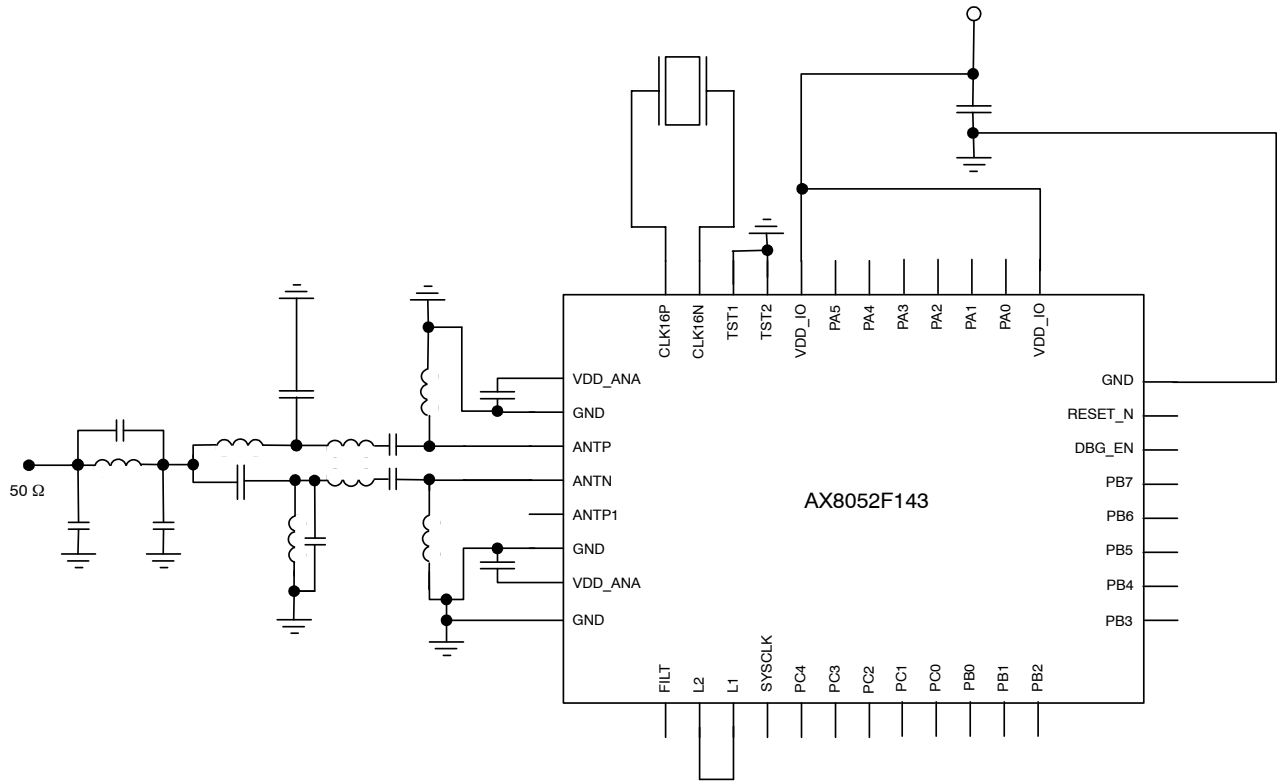


Figure 16. Typical Application Diagram with Single-ended Antenna and Internal TX/RX Switch

# AX8052F143

Using an External High-power PA and an External TX/RX Switch

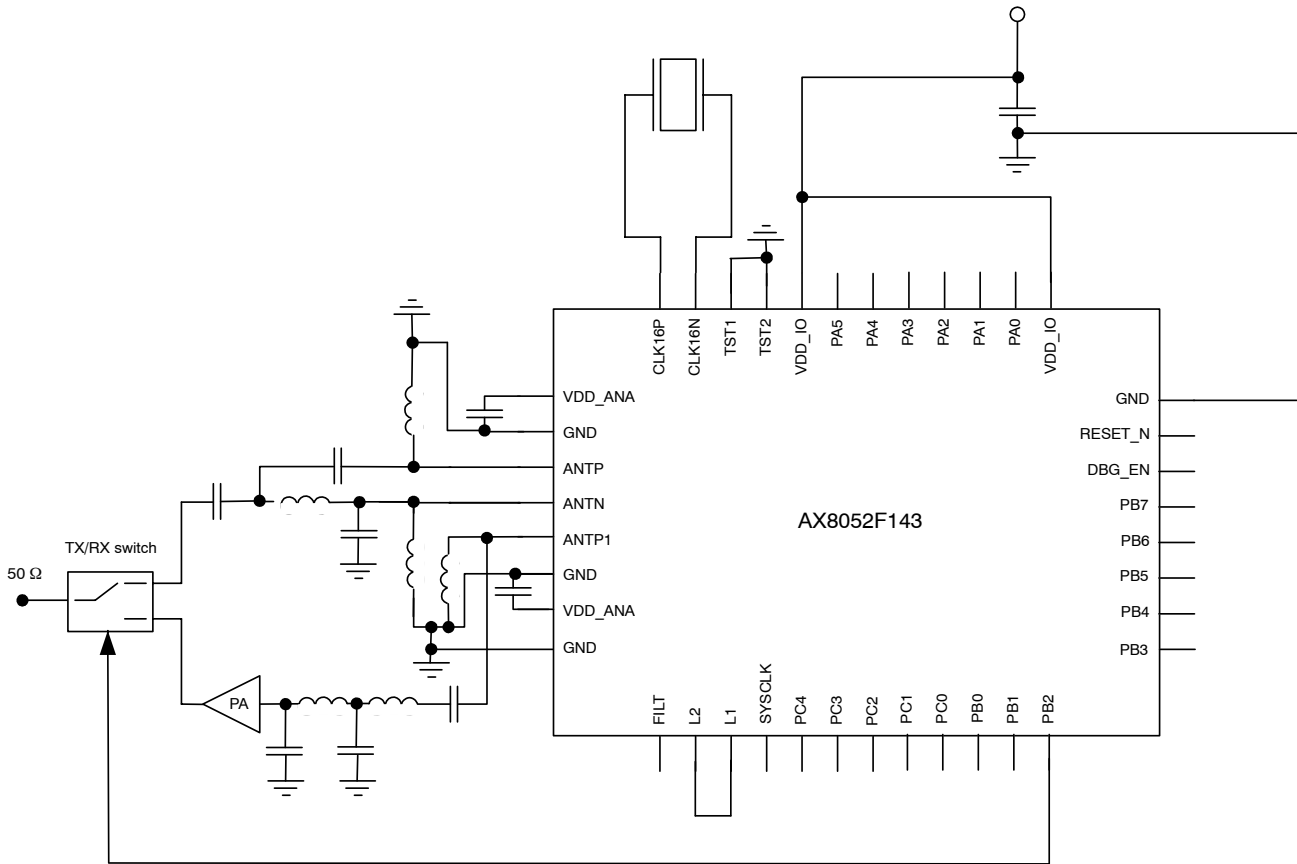
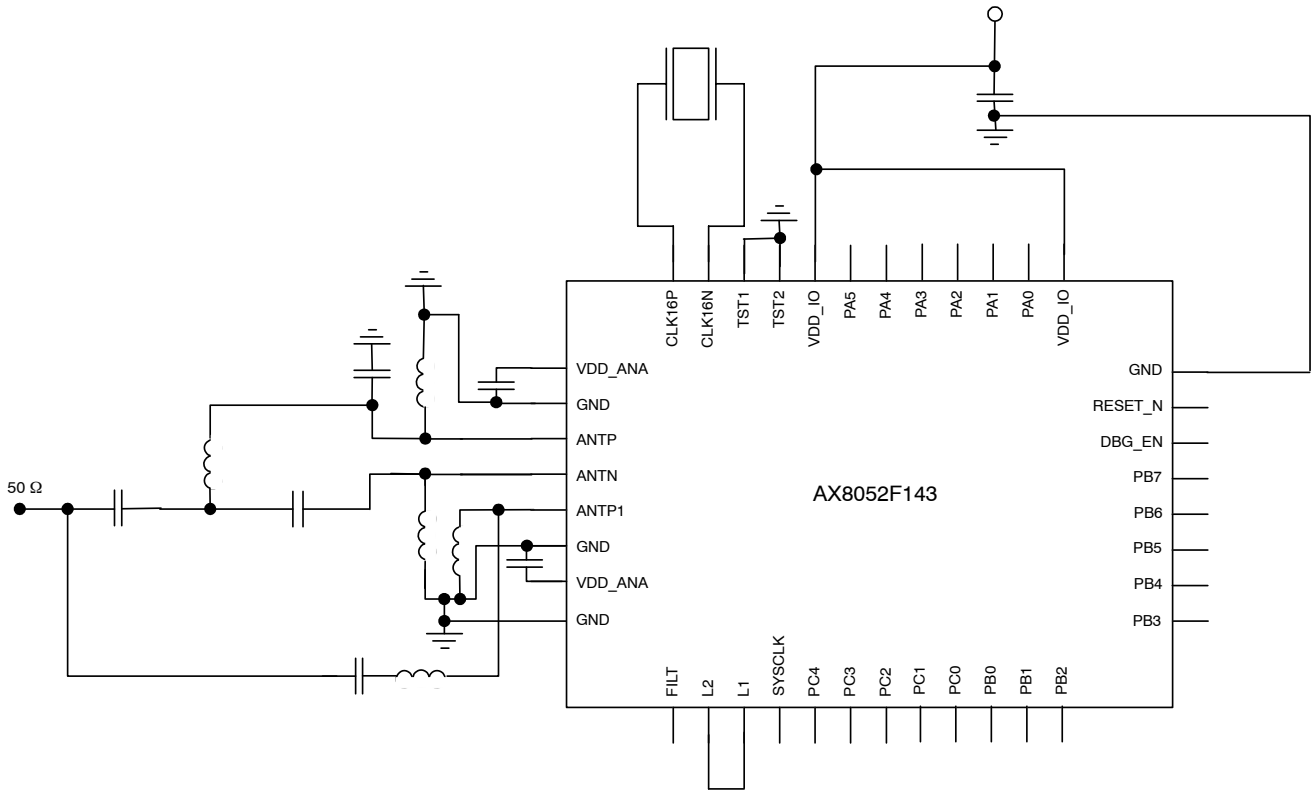


Figure 17. Typical Application Diagram with Single-ended Antenna, External PA and External Antenna Switch

# AX8052F143

Using the Single-ended PA



**Figure 18. Typical Application Diagram with Single-ended Antenna, Single-ended Internal PA, without RX/TX Switch**

NOTE: For details and recommendations on implementing this configuration refer to the AX8052F143 Application Note: 0 dBm / 8 mA TX and 9.5 mA RX Configuration for the 868 MHz Band.

# AX8052F143

Using Two Antenna

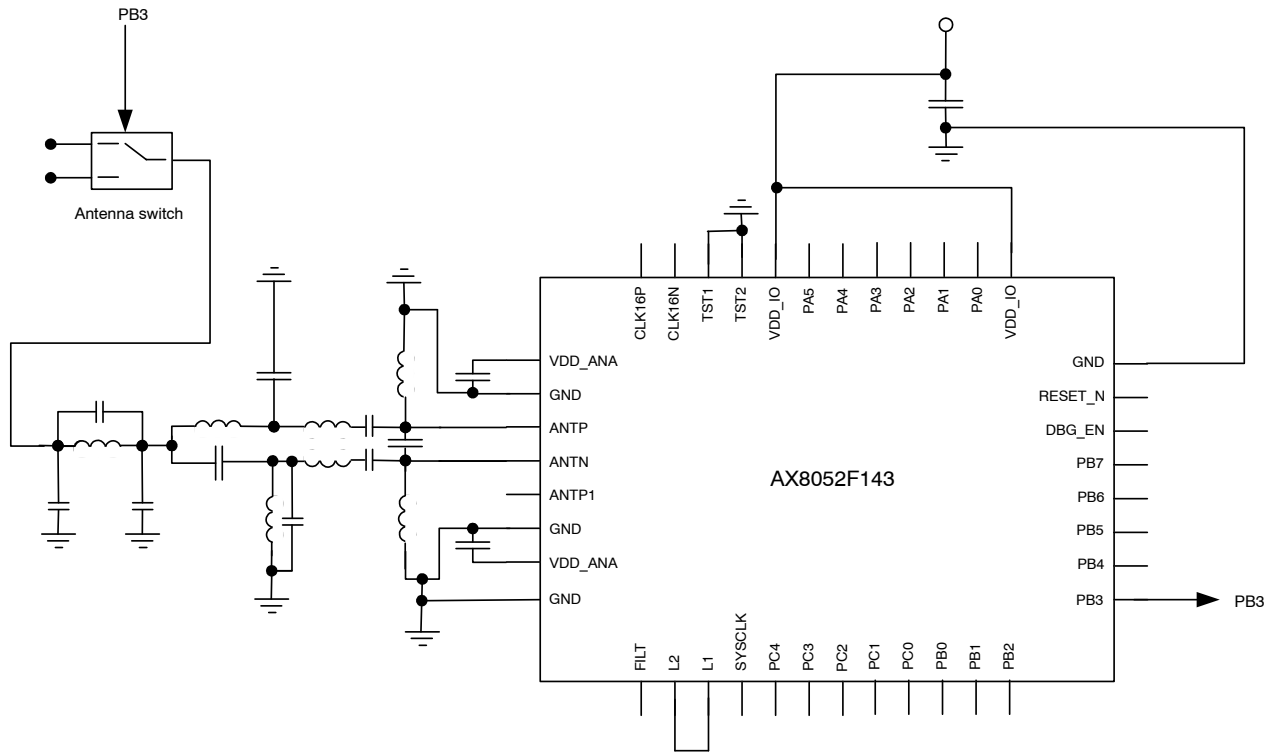


Figure 19. Typical Application Diagram with Two Single-ended Antenna and External Antenna Switch

# AX8052F143

Using an External VCO Inductor

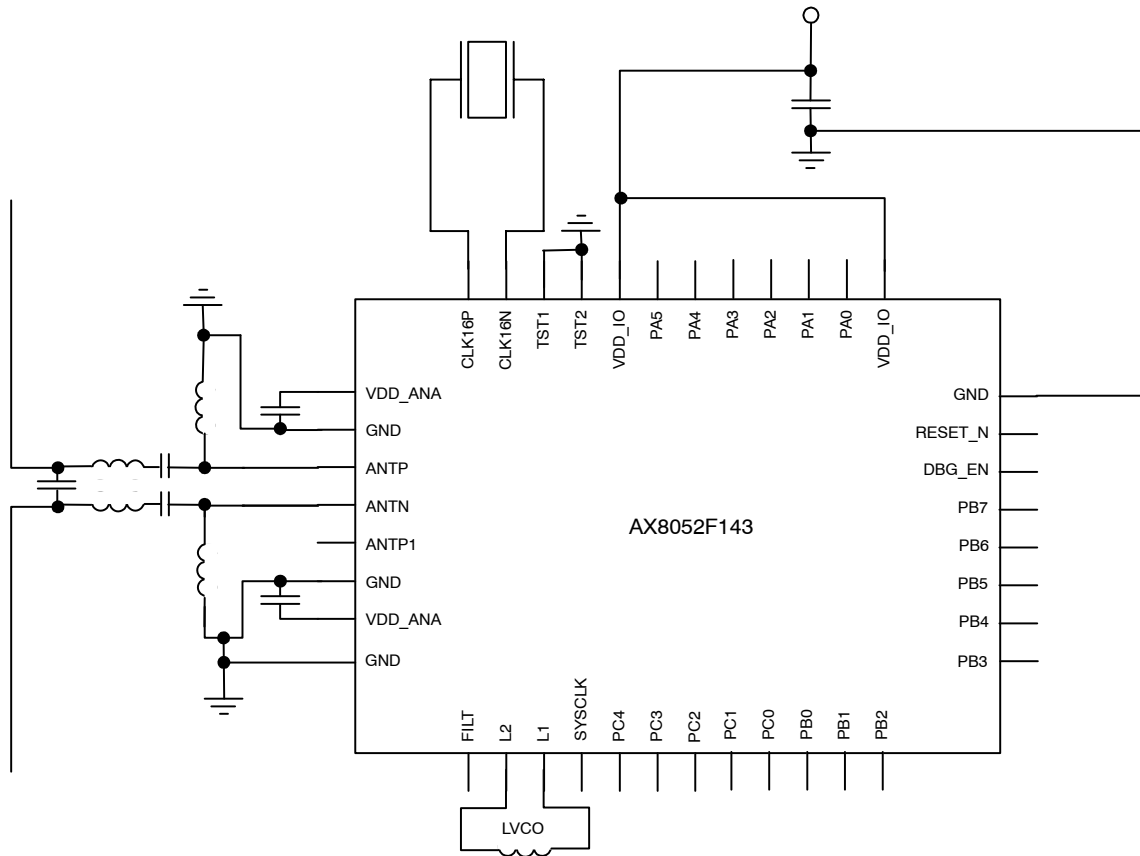


Figure 20. Typical Application Diagram with External VCO Inductor

# AX8052F143

Using an External VCO

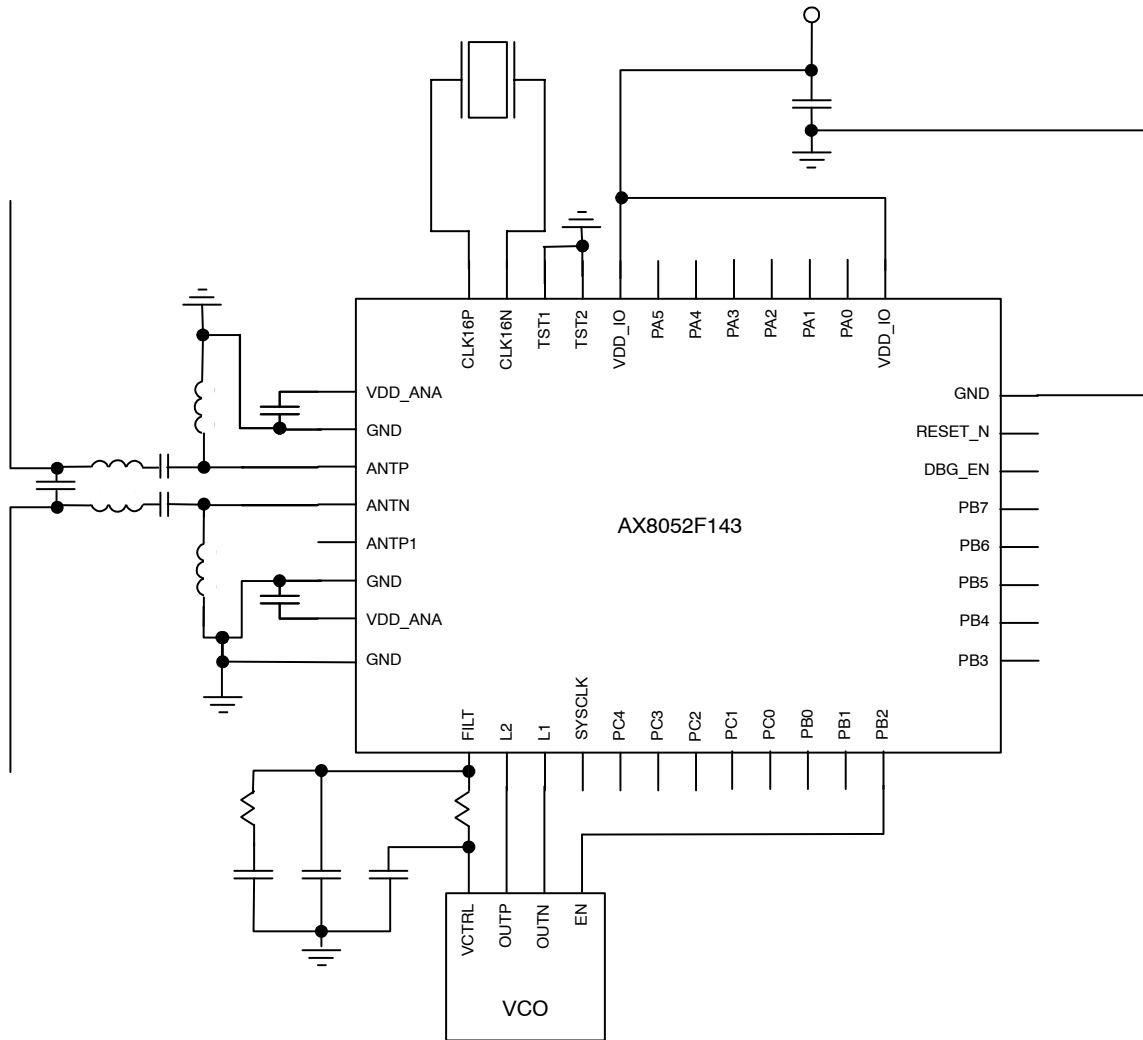
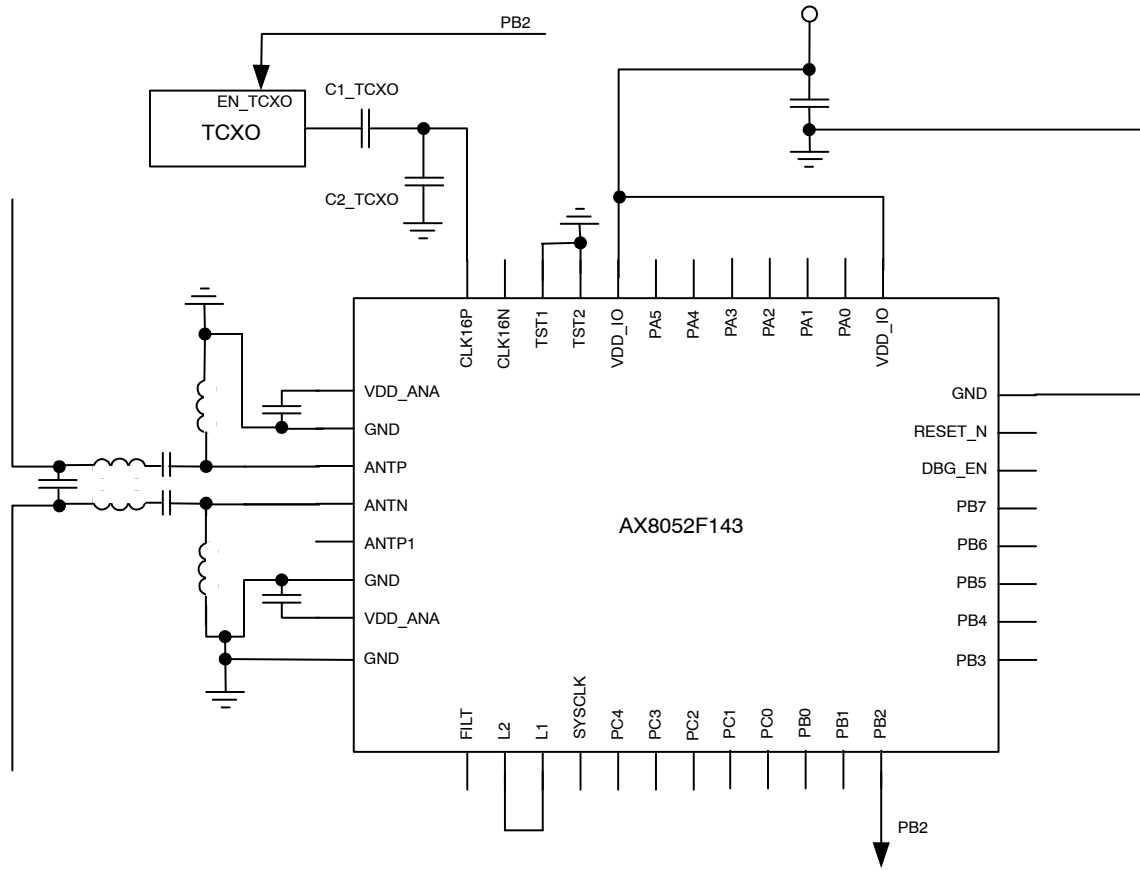


Figure 21. Typical Application Diagram with External VCO



# AX8052F143

Using a TCXO



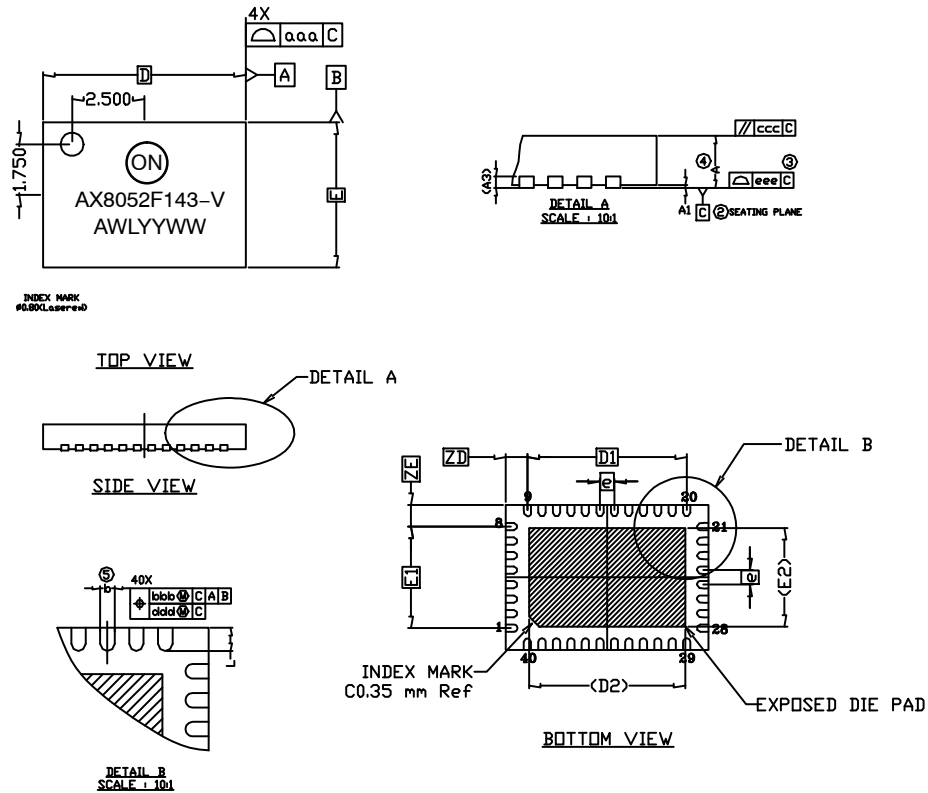
**Figure 22. Typical Application Diagram with a TCXO**

NOTE: For detailed TCXO network recommendations depending on TCXO output swing refer to the AX5043 Application Note: Use with a TCXO Reference Clock.

# AX8052F143

## QFN40 PACKAGE INFORMATION

### Package Outline QFN40 5 x 7 mm



| DIMENSIONAL REFERENCES |          |      |      | Units: mm |
|------------------------|----------|------|------|-----------|
| REF.                   | Min.     | Nom. | Max. |           |
| A                      | 0.80     | 0.90 | 1.00 |           |
| A1                     | 0        | 0.02 | 0.05 |           |
| A3                     | 0.20 Ref |      |      |           |
| D                      | 7.00 BSC |      |      |           |
| D1                     | 5.50 BSC |      |      |           |
| E                      | 5.00 BSC |      |      |           |
| E1                     | 3.50 BSC |      |      |           |
| e                      | 0.50 BSC |      |      |           |
| ZD                     | 0.75 BSC |      |      |           |
| ZE                     | 0.75 BSC |      |      |           |

| TOLERANCE OF FORM AND POSITION |      | Units: mm |
|--------------------------------|------|-----------|
| REF.                           |      |           |
| aaa                            | 0.15 |           |
| bbb                            | 0.10 |           |
| ccc                            | 0.10 |           |
| ddd                            | 0.05 |           |
| eee                            | 0.08 |           |

| Units: mm |        |      |      |      |
|-----------|--------|------|------|------|
| LF REF#.  | Symbol | Min  | Nom  | Max  |
| FR9020    | b      | 0.18 | 0.25 | 0.30 |
|           | L      | 0.30 | 0.40 | 0.50 |
|           | D2     | 5.30 | 5.40 | 5.50 |
|           | E2     | 3.30 | 3.40 | 3.50 |

#### NOTES:

- 'e' represents the basic terminal pitch
- Datum 'C' is the mounting surface with which the package is in contact.
- '3' specifies the vertical shift of the flat part of each terminal from the mounting surface.
- Dimension 'A' includes package warpage.
- Dimension 'b' applies to the metallised terminal and is measured between 0.15 to 0.30 mm from the terminal tip. If the terminal has the optional radius on the other end of the terminal, the dimension 'b' should not be measured in the radius area
- Package dimension take reference from JEDEC MO-220
- AWLYYWW is the packaging lot code
- V is the device version
- RoHS

Figure 23. Package Outline QFN40 5 x 7 mm

QFN40 Soldering Profile

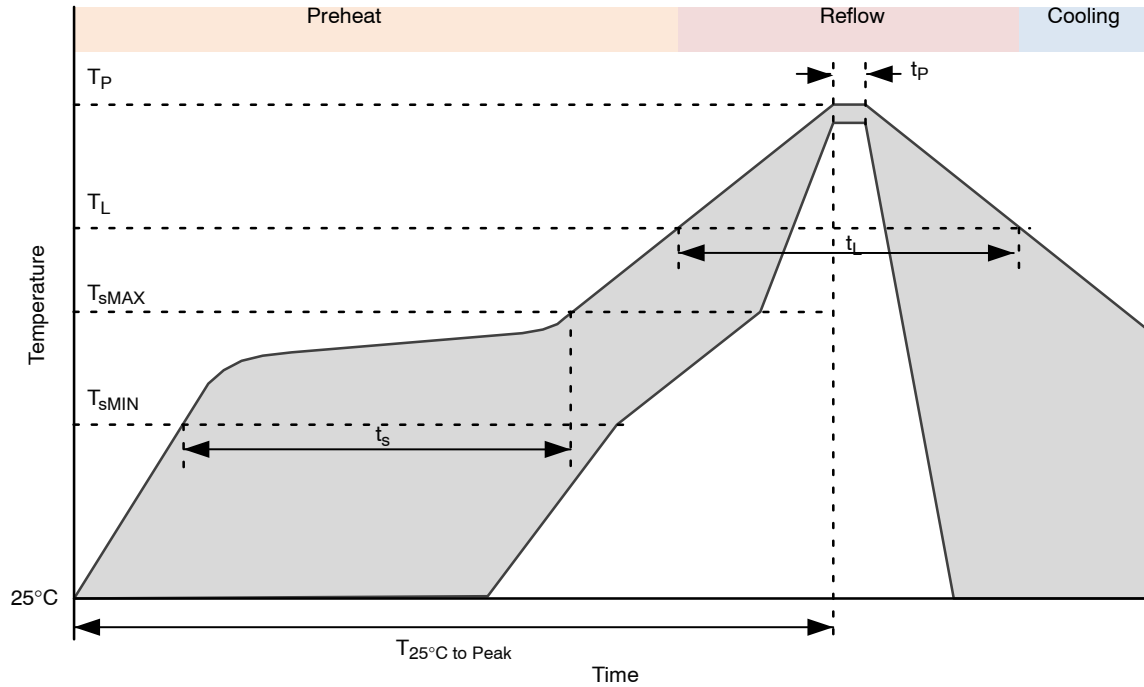


Figure 24. QFN40 Soldering Profile

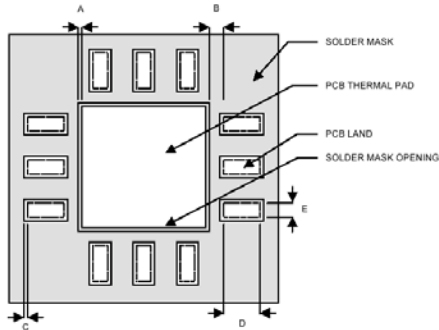
Table 34.

| Profile Feature  | Pb-Free Process |
|--|-----------------|
| Average Ramp-Up Rate                                     | 3°C/s max.      |
| Preheat Preheat  |                 |
| Temperature Min $T_{sMIN}$                               | 150°C           |
| Temperature Max $T_{sMAX}$                               | 200°C           |
| Time ( $T_{sMIN}$ to $T_{sMAX}$ ) $t_s$                  | 60 – 180 sec    |
| Time 25°C to Peak Temperature $T_{25°C \text{ to Peak}}$ | 8 min max.      |
| Reflow Phase   |                 |
| Liquidus Temperature $T_L$                               | 217°C           |
| Time over Liquidus Temperature $t_L$                     | 60 – 150 s      |
| Peak Temperature $t_p$                                   | 260°C           |
| Time within 5°C of actual Peak Temperature $T_P$         | 20 – 40 s       |
| Cooling Phase  |                 |
| Ramp-down rate   | 6°C/s max.      |

1. All temperatures refer to the top side of the package, measured on the the package body surface.

**QFN40 Recommended Pad Layout**

1. PCB land and solder masking recommendations are shown in Figure 25.



- A = Clearance from PCB thermal pad to solder mask opening, 0.0635 mm minimum
- B = Clearance from edge of PCB thermal pad to PCB land, 0.2 mm minimum
- C = Clearance from PCB land edge to solder mask opening to be as tight as possible to ensure that some solder mask remains between PCB pads.
- D = PCB land length = QFN solder pad length + 0.1 mm
- E = PCB land width = QFN solder pad width + 0.1 mm

**Figure 25. PCB Land and Solder Mask Recommendations**

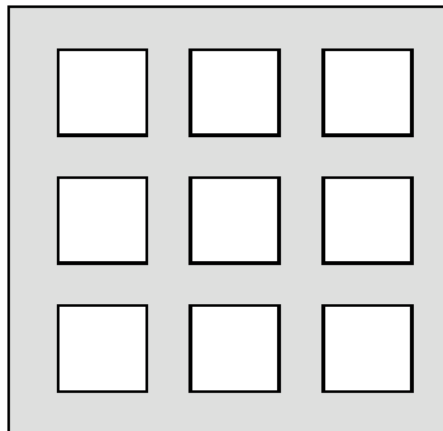
2. Thermal vias should be used on the PCB thermal pad (middle ground pad) to improve thermal conductivity from the device to a copper ground plane area on the reverse side of the printed circuit board. The number of vias depends on the package thermal requirements, as determined by thermal simulation or actual testing.
3. Increasing the number of vias through the printed circuit board will improve the thermal conductivity to the reverse side ground plane and external heat sink. In general, adding more metal through the PCB under the IC will improve operational heat transfer, but will require careful attention to uniform heating of the board during assembly.

**Assembly Process**

*Stencil Design & Solder Paste Application*

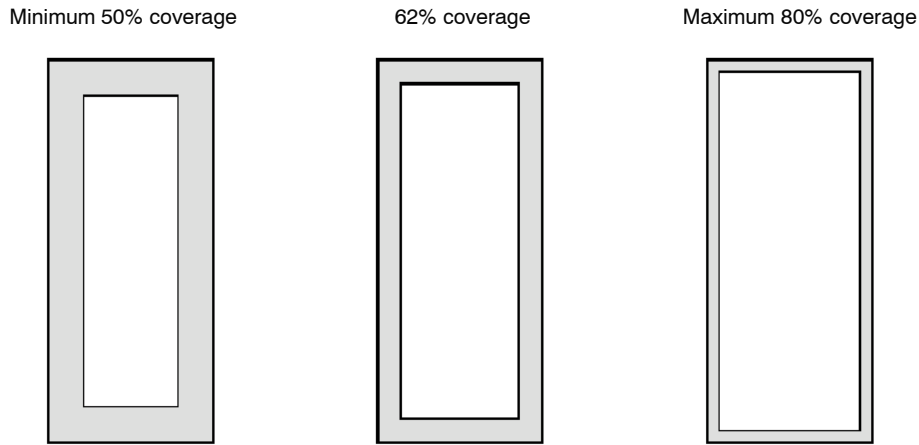
1. Stainless steel stencils are recommended for solder paste application.
2. A stencil thickness of 0.125 – 0.150 mm (5 – 6 mils) is recommended for screening.

3. For the PCB thermal pad, solder paste should be printed on the PCB by designing a stencil with an array of smaller openings that sum to 50% of the QFN exposed pad area. Solder paste should be applied through an array of squares (or circles) as shown in Figure 26.
4. The aperture opening for the signal pads should be between 50–80% of the QFN pad area as shown in Figure 27.
5. Optionally, for better solder paste release, the aperture walls should be trapezoidal and the corners rounded.
6. The fine pitch of the IC leads requires accurate alignment of the stencil and the printed circuit board. The stencil and printed circuit assembly should be aligned to within + 1 mil prior to application of the solder paste.
7. No-clean flux is recommended since flux from underneath the thermal pad will be difficult to clean if water-soluble flux is used.



**Figure 26. Solder Paste Application on Exposed Pad**


# AX8052F143



**Figure 27. Solder Paste Application on Pins**

**Table 35. DEVICE VERSIONS**

| Device Marking | AX8052 Version | AX5043 Version |
|----------------|----------------|----------------|
| AX8052F143-1   | 1              | 1              |
| AX8052F143-2   | 1C             | 1              |

ON Semiconductor and the  are registered trademarks of Semiconductor Components Industries, LLC (SCILLC) or its subsidiaries in the United States and/or other countries. SCILLC owns the rights to a number of patents, trademarks, copyrights, trade secrets, and other intellectual property. A listing of SCILLC's product/patent coverage may be accessed at [www.onsemi.com/site/pdf/Patent-Marking.pdf](http://www.onsemi.com/site/pdf/Patent-Marking.pdf). SCILLC reserves the right to make changes without further notice to any products herein. SCILLC makes no warranty, representation or guarantee regarding the suitability of its products for any particular purpose, nor does SCILLC assume any liability arising out of the application or use of any product or circuit, and specifically disclaims any and all liability, including without limitation special, consequential or incidental damages. "Typical" parameters which may be provided in SCILLC data sheets and/or specifications can and do vary in different applications and actual performance may vary over time. All operating parameters, including "Typicals" must be validated for each customer application by customer's technical experts. SCILLC does not convey any license under its patent rights nor the rights of others. SCILLC products are not designed, intended, or authorized for use as components in systems intended for surgical implant into the body, or other applications intended to support or sustain life, or for any other application in which the failure of the SCILLC product could create a situation where personal injury or death may occur. Should Buyer purchase or use SCILLC products for any such unintended or unauthorized application, Buyer shall indemnify and hold SCILLC and its officers, employees, subsidiaries, affiliates, and distributors harmless against all claims, costs, damages, and expenses, and reasonable attorney fees arising out of, directly or indirectly, any claim of personal injury or death associated with such unintended or unauthorized use, even if such claim alleges that SCILLC was negligent regarding the design or manufacture of the part. SCILLC is an Equal Opportunity/Affirmative Action Employer. This literature is subject to all applicable copyright laws and is not for resale in any manner.

## PUBLICATION ORDERING INFORMATION

**LITERATURE FULFILLMENT:**  
Literature Distribution Center for ON Semiconductor  
19521 E. 32nd Pkwy, Aurora, Colorado 80011 USA  
**Phone:** 303-675-2175 or 800-344-3860 Toll Free USA/Canada  
**Fax:** 303-675-2176 or 800-344-3867 Toll Free USA/Canada  
**Email:** [orderlit@onsemi.com](mailto:orderlit@onsemi.com)

**N. American Technical Support:** 800-282-9855 Toll Free  
USA/Canada  
**Europe, Middle East and Africa Technical Support:**  
Phone: 421 33 790 2910  
**Japan Customer Focus Center**  
Phone: 81-3-5817-1050

**ON Semiconductor Website:** [www.onsemi.com](http://www.onsemi.com)  
**Order Literature:** <http://www.onsemi.com/orderlit>  
For additional information, please contact your local Sales Representative

Компания «Океан Электроники» предлагает заключение долгосрочных отношений при поставках импортных электронных компонентов на взаимовыгодных условиях!

Наши преимущества:

- Поставка оригинальных импортных электронных компонентов напрямую с производств Америки, Европы и Азии, а так же с крупнейших складов мира;
- Широкая линейка поставок активных и пассивных импортных электронных компонентов (более 30 млн. наименований);
- Поставка сложных, дефицитных, либо снятых с производства позиций;
- Оперативные сроки поставки под заказ (от 5 рабочих дней);
- Экспресс доставка в любую точку России;
- Помощь Конструкторского Отдела и консультации квалифицированных инженеров;
- Техническая поддержка проекта, помощь в подборе аналогов, поставка прототипов;
- Поставка электронных компонентов под контролем ВП;
- Система менеджмента качества сертифицирована по Международному стандарту ISO 9001;
- При необходимости вся продукция военного и аэрокосмического назначения проходит испытания и сертификацию в лаборатории (по согласованию с заказчиком);
- Поставка специализированных компонентов военного и аэрокосмического уровня качества (Xilinx, Altera, Analog Devices, Intersil, Interpoint, Microsemi, Actel, Aeroflex, Peregrine, VPT, Syfer, Eurofarad, Texas Instruments, MS Kennedy, Miteq, Cobham, E2V, MA-COM, Hittite, Mini-Circuits, General Dynamics и др.);

Компания «Океан Электроники» является официальным дистрибьютором и эксклюзивным представителем в России одного из крупнейших производителей разъемов военного и аэрокосмического назначения «**JONHON**», а так же официальным дистрибьютором и эксклюзивным представителем в России производителя высокотехнологичных и надежных решений для передачи СВЧ сигналов «**FORSTAR**».



## JONHON

«**JONHON**» (основан в 1970 г.)

Разъемы специального, военного и аэрокосмического назначения:

(Применяются в военной, авиационной, аэрокосмической, морской, железнодорожной, горно- и нефтедобывающей отраслях промышленности)

«**FORSTAR**» (основан в 1998 г.)

ВЧ соединители, коаксиальные кабели, кабельные сборки и микроволновые компоненты:

(Применяются в телекоммуникациях гражданского и специального назначения, в средствах связи, РЛС, а так же военной, авиационной и аэрокосмической отраслях промышленности).



Телефон: 8 (812) 309-75-97 (многоканальный)

Факс: 8 (812) 320-03-32

Электронная почта: [ocean@oceanchips.ru](mailto:ocean@oceanchips.ru)

Web: <http://oceanchips.ru/>

Адрес: 198099, г. Санкт-Петербург, ул. Калинина, д. 2, корп. 4, лит. А