

# Quick Start RF Transceiver Evaluation Kit

## 1. Introduction

The RF Transceiver Evaluation Kit exists to provide familiarity with the functionality of Atmel®'s UHF ASK/FSK transceivers. For this purpose, software is included which enables the user to configure the registers easily and conveniently.

## 2. Kit Contents

The transceiver kit consists of a transceiver base station board, an SPI2LPT interface board, a DC supply cable, a parallel port cable, and a CD-ROM with the appropriate software, as depicted in Figure 2-1. The transceiver board and the SPI2LPT interface board have to be ordered separately.

Figure 2-1. Kit Contents



## Quick Start RF Transceiver Evaluation Kit

## Application Note



## 2.1 Transceiver Board

- Transceiver base station board
- Whip antenna
- BNC to SMB adapter

## 2.2 SPI2LPT Interface Board ATAB-SPI-LPT

- Interface board
- DC supply cable
- Parallel port cable
- CD-ROM *Transceiver S2L*
- CD-ROM *Products*

## 3. Hardware

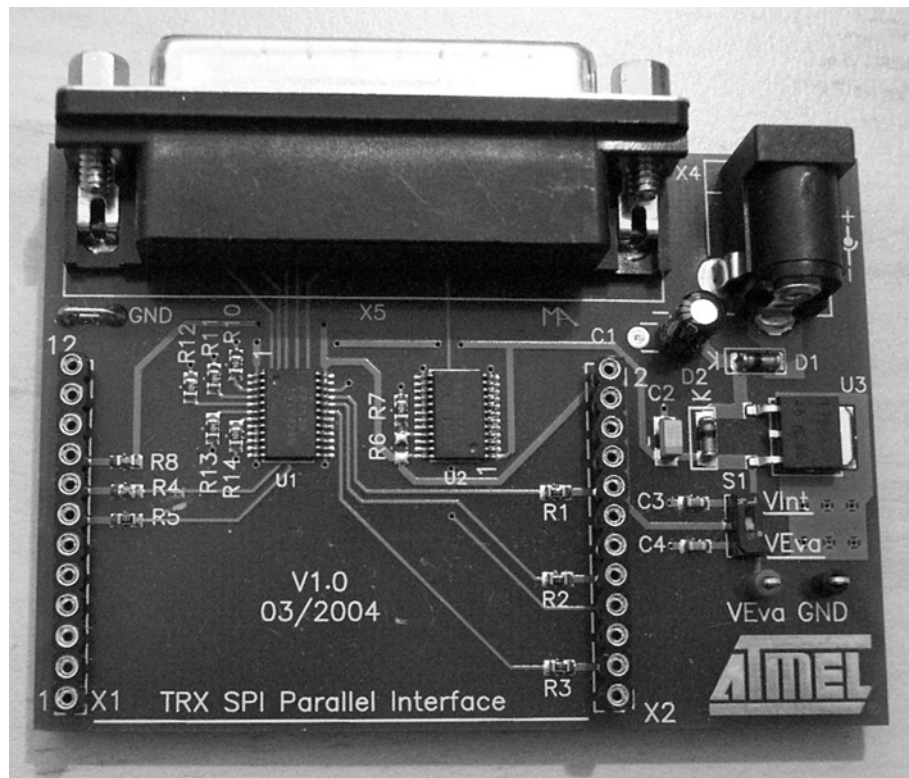
### 3.1 Transceiver Board

The transceiver base station board is available for different frequency ranges in high power mode, that is, with an RF output power of approximately 10 dBm at 50Ω. The different kit versions, transceiver board ordering codes, and SPI2LPT interface board ordering codes are in the selection guide, which can be found on the Atmel web site (**Products -> Automotive & Industrial -> Automotive Control -> Tools & Software**). Note that the transceiver board and the interface board have to be ordered separately.

### 3.2 Interface Board

The SPI2LPT interface board forms the connectivity between a parallel port of the PC and the SPI interface of the transceiver. Furthermore, a stable 5V supply voltage is generated by means of an on-board voltage regulator. [Figure 3-1](#) shows the interface board and its building blocks.

**Figure 3-1.** Building Blocks of Interface Board



### 3.3 Connecting the Transceiver Kit

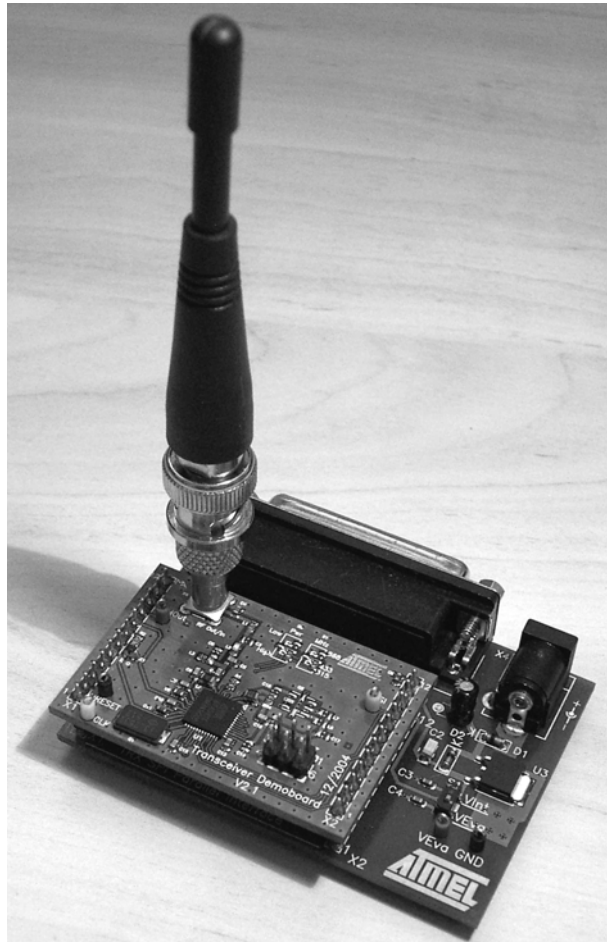
To ensure proper operation, the following steps should be carried out before starting the transceiver software:

1. Assemble the transceiver kit as shown in [Figure 3-2](#).
2. Connect the parallel cable to an unused port of the PC.
3. Set switch *S1* to *VInt*.
4. Connect the DC power cable to a 12V power supply unit.
5. Switch on the 12V DC power supply.
6. Switch on the PC and boot into the operating system.

To measure the current of the transceiver itself, the procedure is as follows:

1. Assemble the transceiver kit as shown in [Figure 3-2](#).
2. Connect the parallel cable to an unused port of the PC.
3. Set switch *S1* to *VEva*.
4. Connect 5V to pin *VEva* and the corresponding ground level to pin *GND*.
5. Connect the DC power cable to a 12V power supply unit.
6. Switch on the 12V DC power supply.
7. Switch on the PC and boot into the operating system.

**Figure 3-2.** Assembly of the Kit



## 4. Software

### 4.1 Installation

On the CD-ROM there are different versions *setup.exe* for the different supported evaluation boards. Go to the appropriate directory on the CD-ROM (for example, ATAB5811\_12) for the evaluation board in use and run that *setup.exe* to install the transceiver software. To use the parallel port, the driver *pport.exe* must be installed.

### 4.2 Getting Started

1. Start the transceiver software.
2. Under **Options** -> **XTAL Frequencies**, select the appropriate crystal frequency according to [Table 4-1](#).

**Table 4-1.** Crystal Frequencies

RF Frequency [MHz]	Crystal Frequency [MHz]
315	12.7319
433.92	13.2531
868.3	13.4119
915	14.1332

3. Choose **Setup** -> **Transfer Rate** and set the fastest supported value.
4. Select the connected port under **Setup** -> **Parallel Port**.
5. Under **File** -> **Load Settings**, four sample settings are predefined. For example, if **433.92MHZ\_RX-MODE\_FSK\_2.4KBIT/S** is selected, a configuration for receiving polling mode with FSK modulation and a data rate of 2.4 kBits/s is loaded. If **433.92MHZ\_TX-MODE\_FSK\_2.4KBIT/S** is selected, the appropriate configuration for transmit mode with FSK modulation and a data rate of 2.4 kBits/s is loaded. **LIM\_MIN** sets the **TX\_BAUDRATE**. Clicking **WRITE ALL** starts the PLL running, but the PA remains off.

In receiving polling mode, the integrated logic searches periodically for a valid transmitter signal. In the presence of a valid signal, the transceiver switches to permanent receiving mode and the data is received.

Depending on the configuration of the transceiver, the data stream is stored in the integrated TX/RX data buffer or is available on pin SDO\_TMDO.

If the status register is read in buffered mode, the number of received bytes is shown as the counter value in the TX/RX buffer window. Clicking **READ** displays the received data stream in the TX/RX buffer window.

In transmit mode, the data can be sent using the TX/RX data buffer, or the data stream can be applied on pin SDI\_TMDI.

To use the TX/RX data buffer, the following steps have to be carried out:

- Set the data stream bit-by-bit including a preburst and a start bit.
- Press **WRITE** to send the data. After the data is sent, a continuous carrier is emitted.
- Set the transceiver back to the desired mode using the control register **CREG1**.

Further details on the different settings, operation modes, flowcharts, etc. are described in the datasheet.



## Atmel Corporation

2325 Orchard Parkway  
San Jose, CA 95131, USA  
Tel: 1(408) 441-0311  
Fax: 1(408) 487-2600

## Regional Headquarters

### Europe

Atmel Sarl  
Route des Arsenalux 41  
Case Postale 80  
CH-1705 Fribourg  
Switzerland  
Tel: (41) 26-426-5555  
Fax: (41) 26-426-5500

### Asia

Room 1219  
Chinachem Golden Plaza  
77 Mody Road Tsimshatsui  
East Kowloon  
Hong Kong  
Tel: (852) 2721-9778  
Fax: (852) 2722-1369

### Japan

9F, Tonetsu Shinkawa Bldg.  
1-24-8 Shinkawa  
Chuo-ku, Tokyo 104-0033  
Japan  
Tel: (81) 3-3523-3551  
Fax: (81) 3-3523-7581

## Atmel Operations

### Memory

2325 Orchard Parkway  
San Jose, CA 95131, USA  
Tel: 1(408) 441-0311  
Fax: 1(408) 436-4314

### Microcontrollers

2325 Orchard Parkway  
San Jose, CA 95131, USA  
Tel: 1(408) 441-0311  
Fax: 1(408) 436-4314

La Chantrerie  
BP 70602  
44306 Nantes Cedex 3, France  
Tel: (33) 2-40-18-18-18  
Fax: (33) 2-40-18-19-60

### ASIC/ASSP/Smart Cards

Zone Industrielle  
13106 Rousset Cedex, France  
Tel: (33) 4-42-53-60-00  
Fax: (33) 4-42-53-60-01

1150 East Cheyenne Mtn. Blvd.  
Colorado Springs, CO 80906, USA  
Tel: 1(719) 576-3300  
Fax: 1(719) 540-1759

Scottish Enterprise Technology Park  
Maxwell Building  
East Kilbride G75 0QR, Scotland  
Tel: (44) 1355-803-000  
Fax: (44) 1355-242-743

### RF/Automotive

Theresienstrasse 2  
Postfach 3535  
74025 Heilbronn, Germany  
Tel: (49) 71-31-67-0  
Fax: (49) 71-31-67-2340

1150 East Cheyenne Mtn. Blvd.  
Colorado Springs, CO 80906, USA  
Tel: 1(719) 576-3300  
Fax: 1(719) 540-1759

### Biometrics/Imaging/Hi-Rel MPU/ High-Speed Converters/RF Datacom

Avenue de Rochepleine  
BP 123  
38521 Saint-Egreve Cedex, France  
Tel: (33) 4-76-58-30-00  
Fax: (33) 4-76-58-34-80

---

## Literature Requests

[www.atmel.com/literature](http://www.atmel.com/literature)

**Disclaimer:** The information in this document is provided in connection with Atmel products. No license, express or implied, by estoppel or otherwise, to any intellectual property right is granted by this document or in connection with the sale of Atmel products. **EXCEPT AS SET FORTH IN ATMEL'S TERMS AND CONDITIONS OF SALE LOCATED ON ATMEL'S WEB SITE, ATMEL ASSUMES NO LIABILITY WHATSOEVER AND DISCLAIMS ANY EXPRESS, IMPLIED OR STATUTORY WARRANTY RELATING TO ITS PRODUCTS INCLUDING, BUT NOT LIMITED TO, THE IMPLIED WARRANTY OF MERCHANTABILITY, FITNESS FOR A PARTICULAR PURPOSE, OR NON-INFRINGEMENT. IN NO EVENT SHALL ATMEL BE LIABLE FOR ANY DIRECT, INDIRECT, CONSEQUENTIAL, PUNITIVE, SPECIAL OR INCIDENTAL DAMAGES (INCLUDING, WITHOUT LIMITATION, DAMAGES FOR LOSS OF PROFITS, BUSINESS INTERRUPTION, OR LOSS OF INFORMATION) ARISING OUT OF THE USE OR INABILITY TO USE THIS DOCUMENT, EVEN IF ATMEL HAS BEEN ADVISED OF THE POSSIBILITY OF SUCH DAMAGES.** Atmel makes no representations or warranties with respect to the accuracy or completeness of the contents of this document and reserves the right to make changes to specifications and product descriptions at any time without notice. Atmel does not make any commitment to update the information contained herein. Unless specifically provided otherwise, Atmel products are not suitable for, and shall not be used in, automotive applications. Atmel's products are not intended, authorized, or warranted for use as components in applications intended to support or sustain life.

© 2006 Atmel Corporation. All rights reserved. Atmel®, logo and combinations thereof, Everywhere You Are® and others are registered trademarks or trademarks of Atmel Corporation or its subsidiaries. Other terms and product names may be trademarks of others.

# Mouser Electronics

Authorized Distributor

Click to View Pricing, Inventory, Delivery & Lifecycle Information:

[Microchip:](#)

[ATAB-SPI-LPT](#)



Компания «Океан Электроники» предлагает заключение долгосрочных отношений при поставках импортных электронных компонентов на взаимовыгодных условиях!

Наши преимущества:

- Поставка оригинальных импортных электронных компонентов напрямую с производств Америки, Европы и Азии, а так же с крупнейших складов мира;
- Широкая линейка поставок активных и пассивных импортных электронных компонентов (более 30 млн. наименований);
- Поставка сложных, дефицитных, либо снятых с производства позиций;
- Оперативные сроки поставки под заказ (от 5 рабочих дней);
- Экспресс доставка в любую точку России;
- Помощь Конструкторского Отдела и консультации квалифицированных инженеров;
- Техническая поддержка проекта, помощь в подборе аналогов, поставка прототипов;
- Поставка электронных компонентов под контролем ВП;
- Система менеджмента качества сертифицирована по Международному стандарту ISO 9001;
- При необходимости вся продукция военного и аэрокосмического назначения проходит испытания и сертификацию в лаборатории (по согласованию с заказчиком);
- Поставка специализированных компонентов военного и аэрокосмического уровня качества (Xilinx, Altera, Analog Devices, Intersil, Interpoint, Microsemi, Actel, Aeroflex, Peregrine, VPT, Syfer, Eurofarad, Texas Instruments, MS Kennedy, Miteq, Cobham, E2V, MA-COM, Hittite, Mini-Circuits, General Dynamics и др.);

Компания «Океан Электроники» является официальным дистрибьютором и эксклюзивным представителем в России одного из крупнейших производителей разъемов военного и аэрокосмического назначения «JONHON», а так же официальным дистрибьютором и эксклюзивным представителем в России производителя высокотехнологичных и надежных решений для передачи СВЧ сигналов «FORSTAR».



## JONHON

«JONHON» (основан в 1970 г.)

Разъемы специального, военного и аэрокосмического назначения:

(Применяются в военной, авиационной, аэрокосмической, морской, железнодорожной, горно- и нефтедобывающей отраслях промышленности)

«FORSTAR» (основан в 1998 г.)

ВЧ соединители, коаксиальные кабели, кабельные сборки и микроволновые компоненты:

(Применяются в телекоммуникациях гражданского и специального назначения, в средствах связи, РЛС, а так же военной, авиационной и аэрокосмической отраслях промышленности).



Телефон: 8 (812) 309-75-97 (многоканальный)

Факс: 8 (812) 320-03-32

Электронная почта: [ocean@oceanchips.ru](mailto:ocean@oceanchips.ru)

Web: <http://oceanchips.ru/>

Адрес: 198099, г. Санкт-Петербург, ул. Калинина, д. 2, корп. 4, лит. А