

MAX6581 Evaluation Kit

Evaluates: MAX6581

General Description

The MAX6581 evaluation kit (EV kit) is an assembled and tested PCB used to evaluate the MAX6581 8-channel temperature sensor. The device monitors its own die temperature and the temperatures of up to seven external diode-connected transistors. It converts the temperature to 8-bit or 11-bit 2-wire serial data that can be accessed over a 2-wire serial bus.

The EV kit also includes Windows® 2000-, Windows XP®, and Windows Vista®-compatible software, which provides a simple user interface for exercising the features of the device. The program is menu driven and offers a graphical user interface (GUI) complete with control buttons and status display.

Features

- ◆ Seven Remote Temperature Sensors
- ◆ Local Temperature Sensor
- ◆ Programmable Undertemperature and Overtemperature Alerts
- ◆ Two Open-Drain Alarm Outputs (ALERT and OVERT)
- ◆ On-Board Microcontroller to Generate SMBus™/I²C Commands
- ◆ Easy-to-Use, Menu-Driven Software
- ◆ Fully Assembled and Tested

Ordering Information

PART	TYPE
MAX6581EVKIT+	EV Kit

+Denotes lead(Pb)-free and RoHS compliant.

Component List

DESIGNATION	QTY	DESCRIPTION
C1, C4–C8, C12, C17, C19	9	0.1µF ±10%, 16V X7R ceramic capacitors (0603) TDK C1608X7R1C104K Murata GRM188R71C104K
C2, C13, C15	3	10µF ±20%, 16V X5R ceramic capacitors (1206) Murata GRM31CR61C106M or TDK C3216X5R1C106M
C3	1	4.7µF ±10%, 6.3V X5R ceramic capacitor (0603) TDK C1608X5R0J475K Murata GRM188R60J475K
C9	1	0.033µF ±10%, 16V X5R ceramic capacitor (0603) Murata GRM188R71E333K TDK C1608X7R1E333K
C10, C11	2	22pF ±5%, 50V C0G ceramic capacitors (0603) Murata GRM1885C1H220J TDK C1608C0G1H220J

DESIGNATION	QTY	DESCRIPTION
C14	1	1µF ±10%, 16V X5R ceramic capacitor (0603) TDK C1608X5R1C105K Murata GRM188R61C105K
C16, C18	2	10pF ±5%, 50V C0G ceramic capacitors (0603) Murata GRM1885C1H100J TDK C1608C0G1H100J
C20–C26	7	100pF ±5%, 50V C0G ceramic capacitors (0603) Murata GRM1885C2A101J TDK C1608C0G1H101J
D1, D2	2	Red LEDs (0805)
D3	1	Green LED (0805)
FB1	1	70Ω, 4A ferrite bead (0603) TDK MMZ1608R301A Murata BLM18SG700 TN1
H1	0	Not installed, 2 x 5-pin JTAG header
JU1–JU8	8	2-pin headers
JU9	1	3-pin header

Windows, Windows XP, and Windows Vista are registered trademarks of Microsoft Corp.

SMBus is a trademark of Intel Corp.

For pricing, delivery, and ordering information, please contact Maxim Direct at 1-888-629-4642, or visit Maxim's website at www.maximintegrated.com.

MAX6581 Evaluation Kit

Evaluates: MAX6581

Component List (continued)

DESIGNATION	QTY	DESCRIPTION
P1	1	USB type-B right-angle PC-mount receptacle
Q1-Q7	7	2N3906-type pnp transistors (SOT23) Central Semi CMPT3906 Diodes Inc. MMBT3906
R1, R2	2	27 Ω \pm 5% resistors (0603)
R3, R17, R18	3	1.5k Ω \pm 5% resistors (0603)
R4, R7, R19, R20	4	470 Ω \pm 5% resistors (0603)
R5	1	2.2k Ω \pm 5% resistor (0603)
R6, R21	2	10k Ω \pm 5% resistors (0603)
R8	1	0 Ω resistor (0603)
R9, R10, R11-R16	0	Not installed, resistors (0603) R9, R10, R11 are open; R12-R16 are short PC trace
U1	1	8-channel temp sensor (24 TQFN) Maxim MAX6581TG9A+

DESIGNATION	QTY	DESCRIPTION
U2	1	LDO regulator (5 SC70) Maxim MAX8511EXK33+
U3	1	Microcontroller (68 QFN-EP*) Maxim MAXQ2000-RAX+
U4	1	LDO regulator (5 SC70) Maxim MAX8511EXK25+
U5	1	USB-to-UART converter (32 TQFP)
U6	1	93C46-type 3-wire EEPROM (8 SO)
Y1	1	16MHz crystal (HCM49) Hong Kong X'tals SSM1600000E18FAF
Y2	1	6MHz crystal (HCM49) Hong Kong X'tals SSL600000E18FAF
—	9	Shunts (JU1-JU9)
—	1	PCB: MAX6581 EVALUATION KIT+

*EP = Exposed pad.

Component Suppliers

SUPPLIER	PHONE	WEBSITE
Central Semiconductor Corp.	631-435-1110	www.centralsemi.com
Diodes Incorporated	805-446-4800	www.diodes.com
Hong Kong X'tals Ltd.	852-35112388	www.hongkongcrystal.com
Murata Electronics North America, Inc.	770-436-1300	www.murata-northamerica.com
TDK Corp.	847-803-6100	www.component.tdk.com

Note: Indicate that you are using the MAX6581 when contacting these component suppliers.

MAX6581 EV Kit Files

FILE	DESCRIPTION
INSTALL.EXE	Installs the EV kit files on your computer
MAX6581.EXE	Application program
FTD2XX.INF	USB driver file
UNINST.INI	Uninstalls the EV kit software
USB_Driver_Help.PDF	USB driver installation help file

MAX6581 Evaluation Kit

Evaluates: MAX6581

Quick Start

Recommended Equipment

- MAX6581 EV kit (USB cable included)
- User-supplied Windows 2000, Windows XP, or Windows Vista PC with a spare USB port

Note: In the following sections, software-related items are identified by bolding. Text in **bold** refers to items directly from the EV kit software. Text in **bold and underlined** refers to items from the Windows operating system.

Procedure

The EV kit is fully assembled and tested. Follow the steps below to verify board operation. **Caution: Do not turn on power supply until all connections are completed.**

- 1) Visit www.maximintegrated.com/evkitsoftware to download the latest version of the EV kit software, 6581Rxx.ZIP. Save the EV kit software to a temporary folder and uncompress the ZIP file.
- 2) Install the EV kit software on your computer by running the INSTALL.EXE program inside the temporary folder. The program files are copied and icons are created in the Windows **Start | Programs** menu.
- 3) Verify all jumpers (JU1–JU9) are in their default positions, as shown in Table 1.
- 4) Connect the USB cable from the PC to the EV kit board. A **New Hardware Found** window pops up when installing the USB driver for the first time. If a window that is similar to the one described above is not seen after 30s, remove the USB cable from the board and reconnect it. Administrator privileges are required to install the USB device driver on Windows.
- 5) Follow the directions of the **Add New Hardware Wizard** to install the USB device driver. Choose the **Search for the best driver for your device**

option. Specify the location of the device driver to be **C:\Program Files\MAX6581** (default installation directory) using the **Browse** button. During device driver installation, Windows may show a warning message indicating that the device driver Maxim uses does not contain a digital signature. This is not an error condition and it is safe to proceed with installation. Refer to the USB_Driver_Help.PDF document included with the software for additional information.

- 6) Start the EV kit software by opening its icon in the **Start | Programs** menu. The EV kit software main window appears, as shown in Figure 1. Observe as the program automatically detects the address of the device and starts the main program.

Detailed Description of Software

User Interface

The MAX6581 EV kit user interface is easy to operate. Each button corresponds to bits in the command and configuration byte. By pressing them, the correct I2C-compatible write operation is generated to update the internal registers of the MAX6581.

Automatic Read

The program polls the device for the new temperature and status data a maximum of two times per second (2Hz). To disable the polling of data, uncheck the **Auto Read** checkbox located at the top of the program.

Data Logging

Check the **Data Logging** checkbox located at the top of the program to activate data logging. Data logging saves temperature and status data to a text file that includes a time/date stamp next to each data point. If the **Auto Read** checkbox is checked, data is sampled at 2Hz; however, the data is logged to the file only if the temperature or status has changed. This slows the

Table 1. Jumper Description (JU1–JU9)

JUMPER	SHUNT POSITION	DESCRIPTION
JU1–JU7	Installed*	The EV kit uses the 2N3906 transistors as the external diode-connected transistors.
	Not installed	The EV kit uses user-supplied external diode-connected transistors.
JU8	Installed	$\overline{\text{STBY}}$ logic-low places the device in standby mode.
	Not installed*	$\overline{\text{STBY}}$ logic-high places the device in normal mode.
JU9	1-2*	Connects the device to the on-board 3.3V supply.
	2-3	Connects the device to the user-supplied (3V to 3.6V) supply.

*Default position.

MAX6581 Evaluation Kit

Evaluates: MAX6581

growth of the data-logging file. When the **Auto Read** checkbox is unchecked, the data is logged each time **Read All** is selected from the **Options** menu bar. To stop data logging, uncheck the **Data Logging** checkbox.

Temperature

The remote-diode-measurement channels can provide 11 bits of data (1 LSB = +0.125°C). The 8 most significant bits (MSBs) can be read from the local temperature and remote temperature registers. The remaining 3 bits for remote can be read from the extended temperature register. Extended resolution is enabled by checking the **Enable Extended Resolution (0x57)** checkbox within the **Temperature** tab sheet (Figure 1).

Read a temperature by pressing the **Read** button. The temperature (in Celsius) reading is shown to the right of the GUI.

ALERT and OVERT Temperature Limits

All temperature channels have programmable alert (ALERT) and overtemperature (OVERT) thresholds. Both alert and overtemperature limits can be set in the **ALERT Temperature Limit (0x17)** and **OVERT Temperature Limit (0x20)** group boxes within the **Temperature** tab sheet (Figure 1).

Read a limit by pressing the **Read** button. The value (in Celsius) is shown in the edit field. Change a limit by entering the value (in Celsius) into the appropriate edit field and pressing the **Write** button.

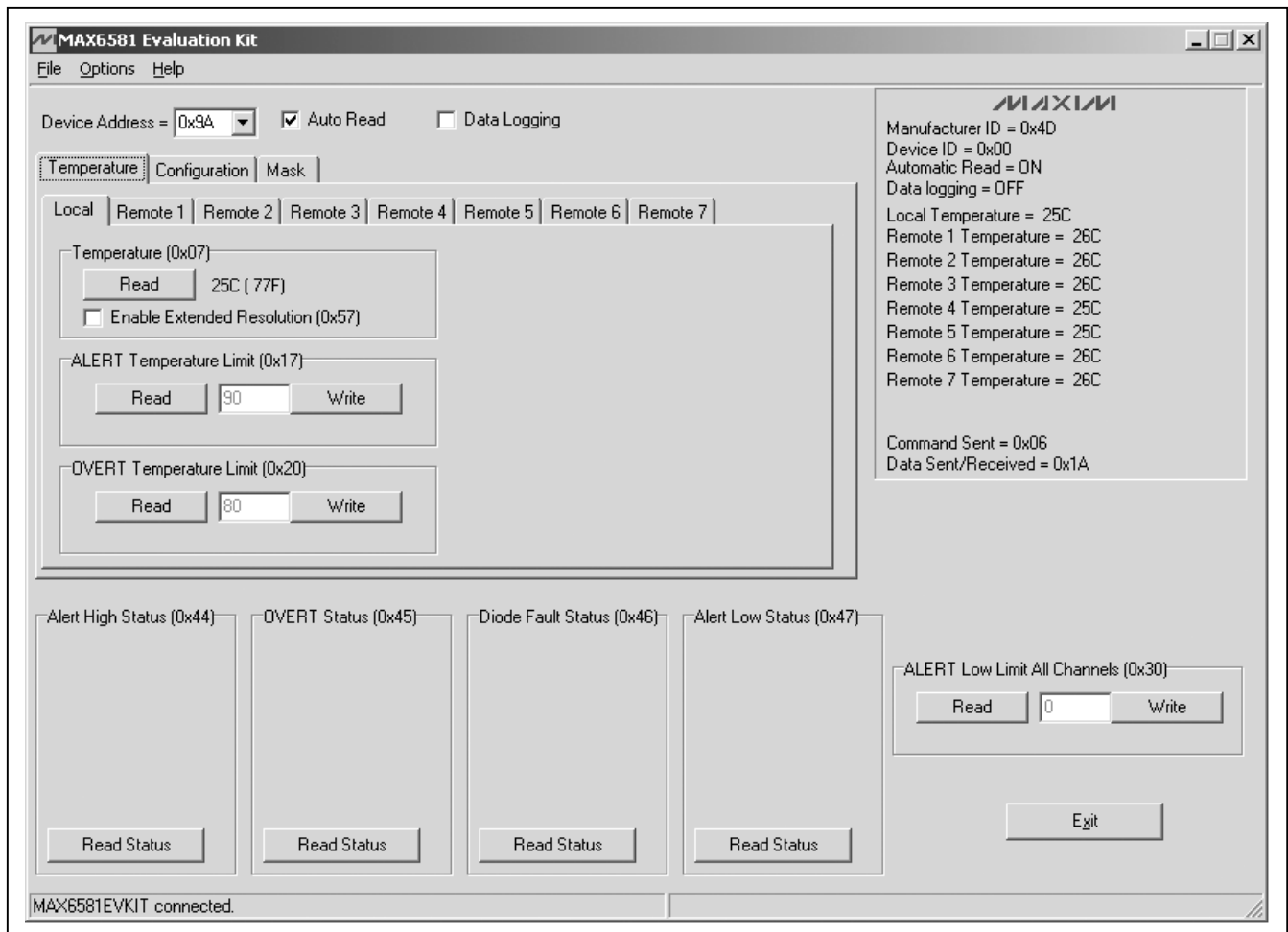


Figure 1. MAX6581 EV Kit Software Main Window (Temperature Tab)

MAX6581 Evaluation Kit

Evaluates: MAX6581

Configuration, ALERT Mask, and OVERT Mask Registers

The configuration register controls the standby-mode bit, the power-on-reset bit, the SMBus timeout enable bit, and the extended-range enable bit. The ALERT mask register enables or disables the ALERT interrupt output. The OVERT mask register enables or disables the OVERT interrupt output.

Figure 2 shows the checkboxes for the configuration register. Each checkbox corresponds to a bit in the register. Tables 2, 3, and 4 describe the function for each checkbox in the Configuration tab's group boxes.

Read the register by pressing the **Read** button. Change the register by selecting or deselecting the desired functions and pressing the **Write** button.

Status Register Functions

The **Alert High Status (0x44)**, **OVERT Status (0x45)**, **Diode Fault Status (0x46)**, and **Alert Low Status (0x47)** group boxes monitor the four status registers and display the critical and fault conditions that occur. See Tables 5–8 for a list of the status conditions.

Read the status of each register by pressing the **Read Status** button within each group box.

The **Alert High Status (0x44)** group box indicates whether a measured local or remote temperature has exceeded the associated threshold limit set in an ALERT High Limit register.

The **OVERT Status (0x45)** group box indicates whether a measured temperature has exceeded the associated threshold limit set in an OVERT High Limit register.

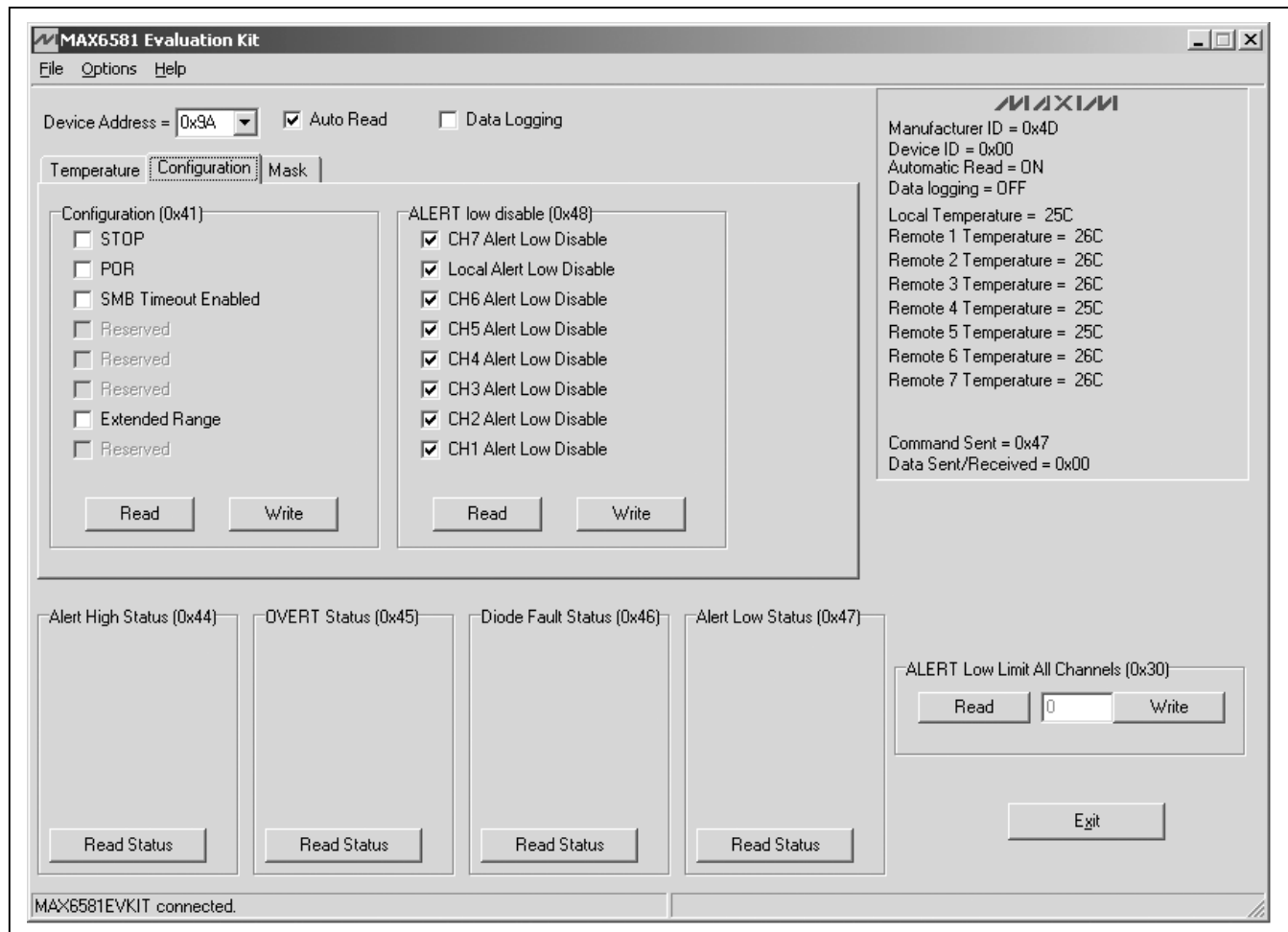


Figure 2. MAX6581 EV Kit Software Main Window (Configuration Tab)

MAX6581 Evaluation Kit

Evaluates: MAX6581

Table 2. Configuration Register Checkboxes

BIT	NAME	STATE	DESCRIPTION
7	STOP	Checked	Places the device in software standby mode.
		Unchecked*	Places the device in operational mode.
6	POR	Checked	Resets all registers to their default values, including the global configuration register. After selecting the POR checkbox, the checkbox returns to the unchecked state.
		Unchecked*	Normal operation.
5	TIMEOUT	Checked	Disables SMBus timeout.
		Unchecked*	Enables the SMBus timeout.
4	RESERVED	N/A	Not used.
3	RESERVED	N/A	Not used.
2	RESERVED	N/A	Not used.
1	EXTRANGE	Checked	Temperature and limit data range set to -64°C to +191°C.
		Unchecked*	Temperature and limit data range set to 0 to +255°C.
0	RESERVED	N/A	Not used.

*Power-on-reset (POR) state.

Table 3. ALERT Mask Register Checkboxes

BIT	NAME	STATE	DESCRIPTION
7	Mask $\overline{\text{ALERT}}_7$	Checked	Disables the remote-diode 7 $\overline{\text{ALERT}}$ interrupt.
		Unchecked*	Enables the remote-diode 7 $\overline{\text{ALERT}}$ interrupt.
6	Mask Local $\overline{\text{ALERT}}$	Checked	Disables the local $\overline{\text{ALERT}}$ interrupt.
		Unchecked*	Enables the local $\overline{\text{ALERT}}$ interrupt.
5	Mask $\overline{\text{ALERT}}_6$	Checked	Disables the remote-diode 6 $\overline{\text{ALERT}}$ interrupt.
		Unchecked*	Enables the remote-diode 6 $\overline{\text{ALERT}}$ interrupt.
4	Mask $\overline{\text{ALERT}}_5$	Checked	Disables the remote-diode 5 $\overline{\text{ALERT}}$ interrupt.
		Unchecked*	Enables the remote-diode 5 $\overline{\text{ALERT}}$ interrupt.
3	Mask $\overline{\text{ALERT}}_4$	Checked	Disables the remote-diode 4 $\overline{\text{ALERT}}$ interrupt.
		Unchecked*	Enables the remote-diode 4 $\overline{\text{ALERT}}$ interrupt.
2	Mask $\overline{\text{ALERT}}_3$	Checked	Disables the remote-diode 3 $\overline{\text{ALERT}}$ interrupt.
		Unchecked*	Enables the remote-diode 3 $\overline{\text{ALERT}}$ interrupt.
1	Mask $\overline{\text{ALERT}}_2$	Checked	Disables the remote-diode 2 $\overline{\text{ALERT}}$ interrupt.
		Unchecked*	Enables the remote-diode 2 $\overline{\text{ALERT}}$ interrupt.
0	Mask $\overline{\text{ALERT}}_1$	Checked	Disables the remote-diode 1 $\overline{\text{ALERT}}$ interrupt.
		Unchecked*	Enables the remote-diode 1 $\overline{\text{ALERT}}$ interrupt.

*Power-on-reset (POR) state.

MAX6581 Evaluation Kit

Evaluates: MAX6581

Table 4. $\overline{\text{OVERT}}$ Mask Register Checkboxes

BIT	NAME	STATE	DESCRIPTION
7	Mask $\overline{\text{OVERT}}$ 7	Checked	Disables the remote-diode 7 $\overline{\text{OVERT}}$ interrupt.
		Unchecked*	Enables the remote-diode 7 $\overline{\text{OVERT}}$ interrupt.
6	Mask Local $\overline{\text{OVERT}}$	Checked	Disables the local $\overline{\text{OVERT}}$ interrupt.
		Unchecked*	Enables the local $\overline{\text{OVERT}}$ interrupt.
5	Mask $\overline{\text{OVERT}}$ 6	Checked	Disables the remote-diode 6 $\overline{\text{OVERT}}$ interrupt.
		Unchecked*	Enables the remote-diode 6 $\overline{\text{OVERT}}$ interrupt.
4	Mask $\overline{\text{OVERT}}$ 5	Checked	Disables the remote-diode 5 $\overline{\text{OVERT}}$ interrupt.
		Unchecked*	Enables the remote-diode 5 $\overline{\text{OVERT}}$ interrupt.
3	Mask $\overline{\text{OVERT}}$ 4	Checked	Disables the remote-diode 4 $\overline{\text{OVERT}}$ interrupt.
		Unchecked*	Enables the remote-diode 4 $\overline{\text{OVERT}}$ interrupt.
2	Mask $\overline{\text{OVERT}}$ 3	Checked	Disables the remote-diode 3 $\overline{\text{OVERT}}$ interrupt.
		Unchecked*	Enables the remote-diode 3 $\overline{\text{OVERT}}$ interrupt.
1	Mask $\overline{\text{OVERT}}$ 2	Checked	Disables the remote-diode 2 $\overline{\text{OVERT}}$ interrupt.
		Unchecked*	Enables the remote-diode 2 $\overline{\text{OVERT}}$ interrupt.
0	Mask $\overline{\text{OVERT}}$ 1	Checked	Disables the remote-diode 1 $\overline{\text{OVERT}}$ interrupt.
		Unchecked*	Enables the remote-diode 1 $\overline{\text{OVERT}}$ interrupt.

Table 5. $\overline{\text{ALERT}}$ High Status Register

BIT	NAME	FUNCTION
7	Remote $\overline{\text{ALERT}}$ 7	The channel 7 remote-diode temperature exceeds the programmed temperature threshold limit in the remote 7 $\overline{\text{ALERT}}$ High Limit register.
6	Local $\overline{\text{ALERT}}$	The local temperature exceeds the temperature threshold limit in the local $\overline{\text{ALERT}}$ High Limit register.
5	Remote $\overline{\text{ALERT}}$ 6	The channel 6 remote-diode temperature exceeds the programmed temperature threshold limit in the remote 6 $\overline{\text{ALERT}}$ High Limit register.
4	Remote $\overline{\text{ALERT}}$ 5	The channel 5 remote-diode temperature exceeds the programmed temperature threshold limit in the remote 5 $\overline{\text{ALERT}}$ High Limit register.
3	Remote $\overline{\text{ALERT}}$ 4	The channel 4 remote-diode temperature exceeds the programmed temperature threshold limit in the remote 4 $\overline{\text{ALERT}}$ High Limit register.
2	Remote $\overline{\text{ALERT}}$ 3	The channel 3 remote-diode temperature exceeds the programmed temperature threshold limit in the remote 3 $\overline{\text{ALERT}}$ High Limit register.
1	Remote $\overline{\text{ALERT}}$ 2	The channel 2 remote-diode temperature exceeds the programmed temperature threshold limit in the remote 2 $\overline{\text{ALERT}}$ High Limit register.
0	Remote $\overline{\text{ALERT}}$ 1	The channel 1 remote-diode temperature exceeds the programmed temperature threshold limit in the remote 1 $\overline{\text{ALERT}}$ High Limit register.

*Power-on-reset (POR) state.

MAX6581 Evaluation Kit

Evaluates: MAX6581

Table 6. $\overline{\text{OVERT}}$ Status Register

BIT	NAME	FUNCTION
7	Remote $\overline{\text{OVERT}}$ 7	The channel 7 remote-diode temperature exceeds the temperature threshold limit in the remote 7 $\overline{\text{OVERT}}$ High Limit register.
6	Local $\overline{\text{OVERT}}$	Local Channel Overtemperature Status Bit. This bit is set to logic 1 when the local temperature exceeds the temperature threshold limit in the local $\overline{\text{OVERT}}$ High Limit register.
5	Remote $\overline{\text{OVERT}}$ 6	The channel 6 remote-diode temperature exceeds the temperature threshold limit in the remote 6 $\overline{\text{OVERT}}$ High Limit register.
4	Remote $\overline{\text{OVERT}}$ 5	The channel 5 remote-diode temperature exceeds the temperature threshold limit in the remote 5 $\overline{\text{OVERT}}$ High Limit register.
3	Remote $\overline{\text{OVERT}}$ 4	The channel 4 remote-diode temperature exceeds the temperature threshold limit in the remote 4 $\overline{\text{OVERT}}$ High Limit register.
2	Remote $\overline{\text{OVERT}}$ 3	The channel 3 remote-diode temperature exceeds the temperature threshold limit in the remote 3 $\overline{\text{OVERT}}$ High Limit register.
1	Remote $\overline{\text{OVERT}}$ 2	The channel 2 remote-diode temperature exceeds the temperature threshold limit in the remote 2 $\overline{\text{OVERT}}$ High Limit register.
0	Remote $\overline{\text{OVERT}}$ 1	The channel 1 remote-diode temperature exceeds the temperature threshold limit in the remote 1 $\overline{\text{OVERT}}$ High Limit register.

Table 7. Diode Fault Status Register

BIT	NAME	FUNCTION
7	RESERVED	Not used.
6	Diode Fault 7	DXP7 and DXN7 are open circuit or when DXP7 is connected to VCC.
5	Diode Fault 6	DXP6 and DXN6 are open circuit or when DXP6 is connected to VCC.
4	Diode Fault 5	DXP5 and DXN5 are open circuit or when DXP5 is connected to VCC.
3	Diode Fault 4	DXP4 and DXN4 are open circuit or when DXP4 is connected to VCC.
2	Diode Fault 3	DXP3 and DXN3 are open circuit or when DXP3 is connected to VCC.
1	Diode Fault 2	DXP2 and DXN2 are open circuit or when DXP2 is connected to VCC.
0	Diode Fault 1	DXP1 and DXN1 are open circuit or shorted together.

The **Diode Fault Status (0x46)** group box indicates whether there is a diode fault (open or short) in any of the remote-sensing channels.

The **Alert Low Status (0x47)** group box indicates whether a measured local or remote temperature has fallen below the threshold limit set in the $\overline{\text{ALERT}}$ Low Limit register (**ALERT Low Limit All Channels (0x30)**).

Resistance Cancellation

Resistance cancellation is available for all remote channels and compensates for high series resistance in circuit-board traces and thermal diodes. Table 9 describes the function for each checkbox in the **Resistance Cancellation (0x4A)** tab.

Read the register by clicking on the **Read** button. Change the register by selecting or deselecting the desired functions and pressing the **Write** button.

MAX6581 Evaluation Kit

Evaluates: MAX6581

Table 8. ALERT Low Status Register

BIT	NAME	FUNCTION
7	Remote $\overline{\text{ALERT}}$ 7	The channel 7 remote-diode temperature falls below the programmed temperature threshold limit in the remote 7 $\overline{\text{ALERT}}$ Low Limit register.
6	Local $\overline{\text{ALERT}}$	The local channel remote-diode temperature falls below the programmed temperature threshold limit in the local $\overline{\text{ALERT}}$ Low Limit register.
5	Remote $\overline{\text{ALERT}}$ 6	The channel 6 remote-diode temperature falls below the programmed temperature threshold limit in the remote 6 $\overline{\text{ALERT}}$ Low Limit register.
4	Remote $\overline{\text{ALERT}}$ 5	The channel 5 remote-diode temperature falls below the programmed temperature threshold limit in the remote 5 $\overline{\text{ALERT}}$ Low Limit register.
3	Remote $\overline{\text{ALERT}}$ 4	The channel 4 remote-diode temperature falls below the programmed temperature threshold limit in the remote 4 $\overline{\text{ALERT}}$ Low Limit register.
2	Remote $\overline{\text{ALERT}}$ 3	The channel 3 remote-diode temperature falls below the programmed temperature threshold limit in the remote 3 $\overline{\text{ALERT}}$ Low Limit register.
1	Remote $\overline{\text{ALERT}}$ 2	The channel 2 remote-diode temperature falls below the programmed temperature threshold limit in the remote 2 $\overline{\text{ALERT}}$ Low Limit register.
0	Remote $\overline{\text{ALERT}}$ 1	The channel 1 remote-diode temperature falls below the programmed temperature threshold limit in the remote 1 $\overline{\text{ALERT}}$ Low Limit register.

Table 9. Resistance Cancellation Register (4Ah)

BIT	NAME	STATE	DESCRIPTION
7	X	—	Not used.
6	RESISTANCE CANCELLATION 7	Checked	Enables channel 7 resistance cancellation.
		Unchecked*	Disables channel 7 resistance cancellation.
5	RESISTANCE CANCELLATION 6	Checked	Enables channel 6 resistance cancellation.
		Unchecked*	Disables channel 6 resistance cancellation.
4	RESISTANCE CANCELLATION 5	Checked	Enables channel 5 resistance cancellation.
		Unchecked*	Disables channel 5 resistance cancellation.
3	RESISTANCE CANCELLATION 4	Checked	Enables channel 4 resistance cancellation.
		Unchecked*	Disables channel 4 resistance cancellation.
2	RESISTANCE CANCELLATION 3	Checked	Enables channel 3 resistance cancellation.
		Unchecked*	Disables channel 3 resistance cancellation.
1	RESISTANCE CANCELLATION 2	Checked	Enables channel 2 resistance cancellation.
		Unchecked*	Disables channel 2 resistance cancellation.
0	RESISTANCE CANCELLATION 1	Checked	Enables channel 1 resistance cancellation.
		Unchecked*	Disables channel 1 resistance cancellation.

X = Don't care.

*Power-on-reset (POR) state.

MAX6581 Evaluation Kit

Evaluates: MAX6581

Advanced User Interface

There are two methods for communicating with the device: through the normal user-interface main window or through the SMBus/I²C commands available by selecting **Options | Interface (Advanced Users)** from the menu bar. An **Advanced User Interface** window pops up with the **2-wire interface** tab selected, which allows the SMBus/I²C-compatible protocols, such as read byte and write byte, to be executed. The only SMBus/I²C-compatible protocols used by the device are:

- 1 - SMBusWriteByte(addr,cmd,data8)
- 4 - SMBusReadByte(addr,cmd) → data8

The combo and edit boxes accept numeric data in hexadecimal and should be prefixed by 0x. See Figure 3 for an example of this tool.

In this example, the software is reading from **Device Address 10011010 r/w** (binary), and register address 0x07.

Detailed Description of Hardware

The MAX6581 EV kit is an assembled and tested PCB used to evaluate the MAX6581 8-channel temperature sensor. The device monitors its own die temperature and the temperatures of up to seven external diode-connected transistors. The EV kit features an on-board microcontroller that receives commands from a PC through the USB port. The EV kit can be powered directly from the USB or from a 3.3V single-supply voltage.

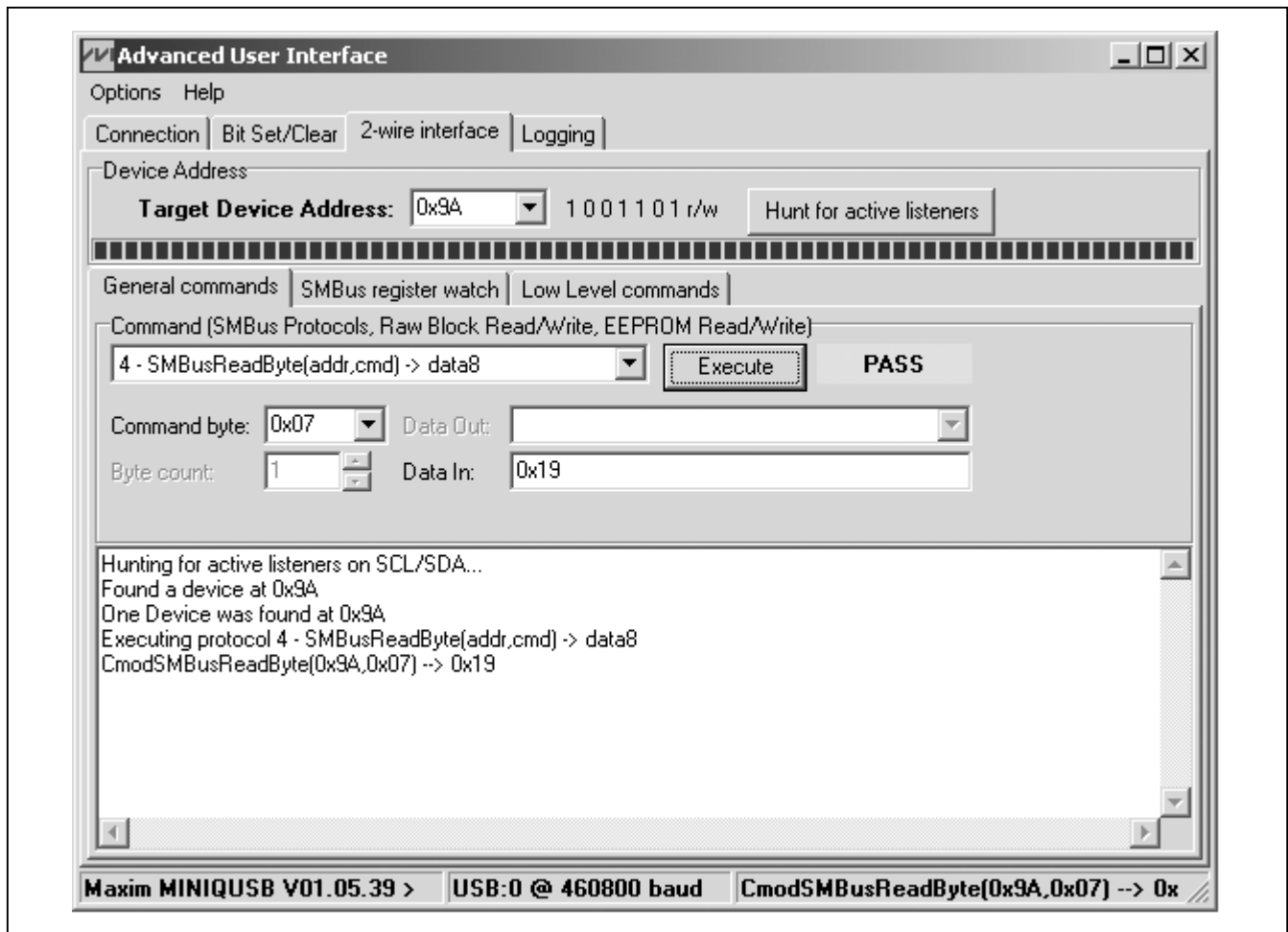


Figure 3. Example of a Simple SMBusReadByte Operation Using the Advanced User Interface

MAX6581 Evaluation Kit

Evaluates: MAX6581

Replacing Diodes

Jumpers JU1–JU7 connect the 2N3906 transistors as the external diodes. To use different diodes, remove Q1–Q7 and connect the diodes (through twisted-pair wire) across the DXP1–DXP7 and DXN1–DXN7 pads.

User-Supplied Power Supply

The EV kit is powered completely from the USB port by default. To power the EV kit externally, move the shunt on jumper JU9 to the 2-3 position and apply a user-supplied 3.3V power supply at the VCC and GND pads.

MAX6581 Evaluation Kit

Evaluates: MAX6581

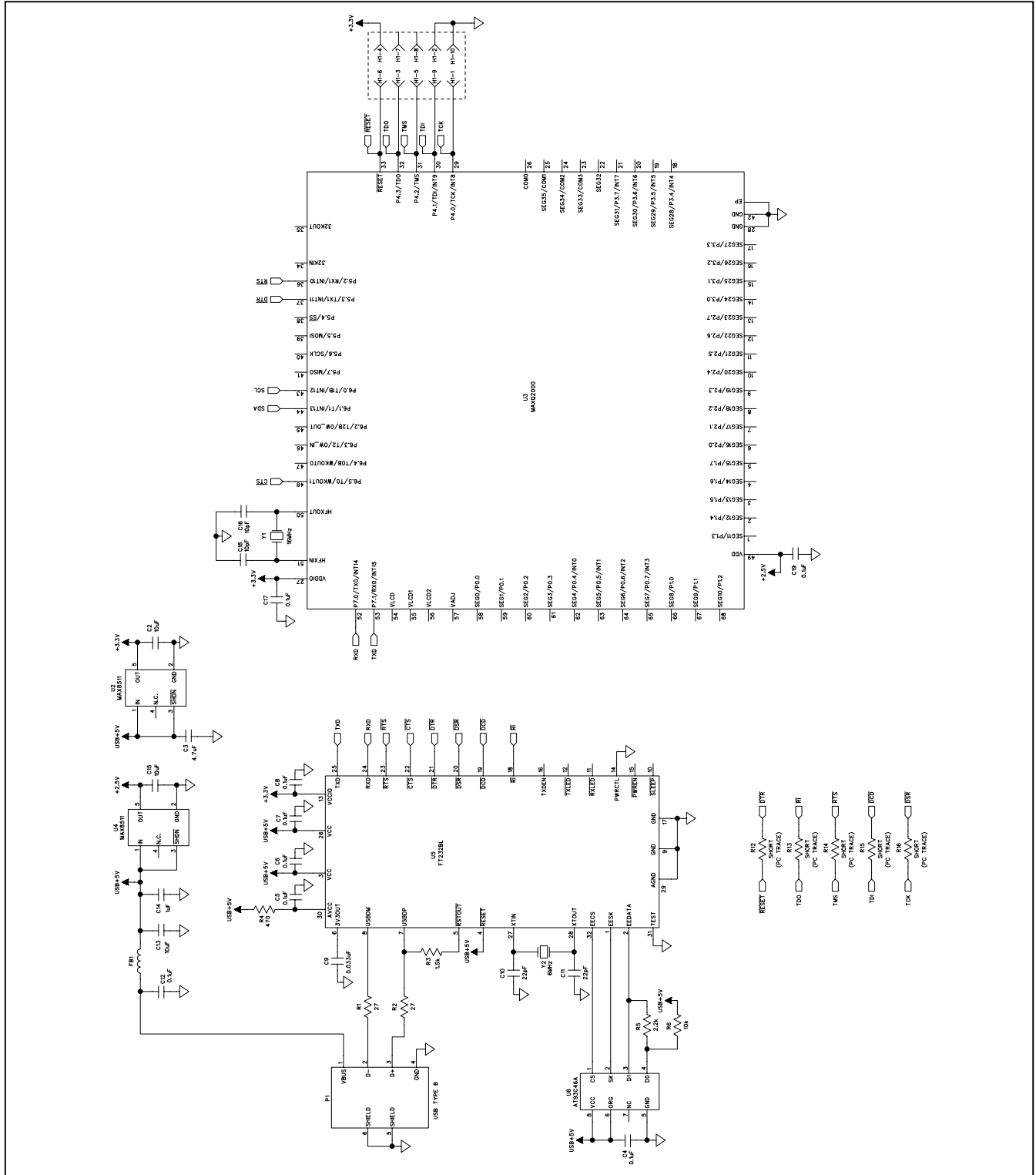


Figure 4b. MAX6581 EV Kit Schematic (Sheet 2 of 2)

MAX6581 Evaluation Kit

Evaluates: MAX6581

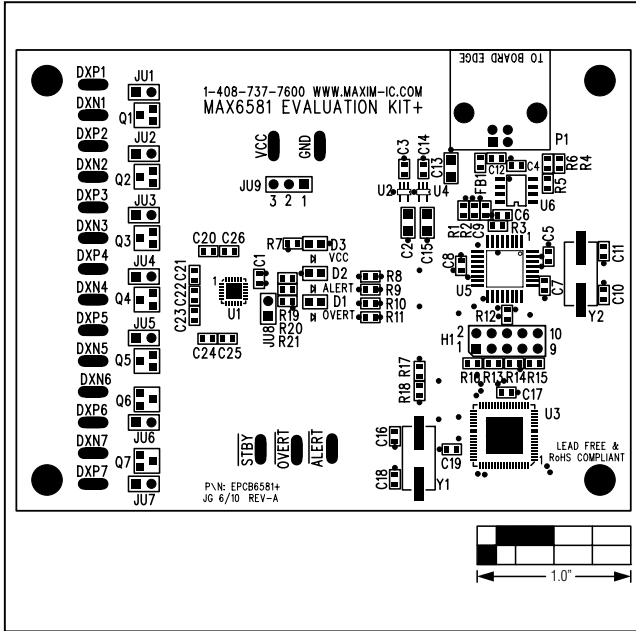


Figure 5. MAX6581 EV Kit Component Placement Guide—Component Side

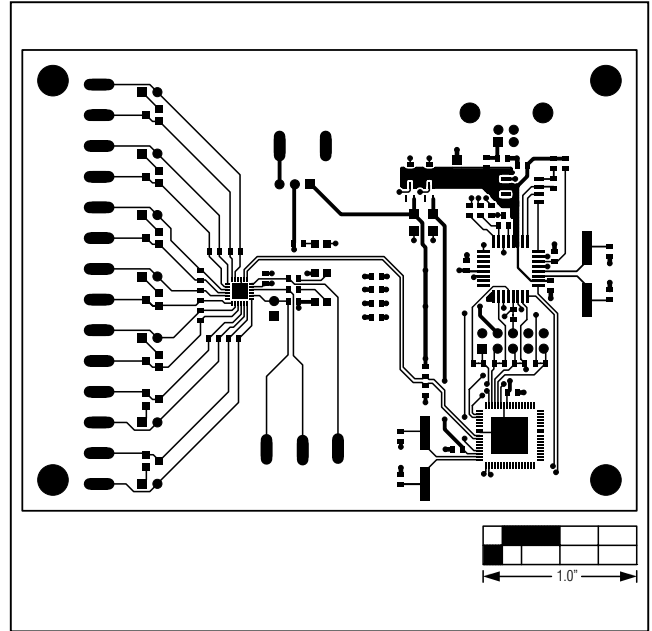


Figure 6. MAX6581 EV Kit PCB Layout—Component Side

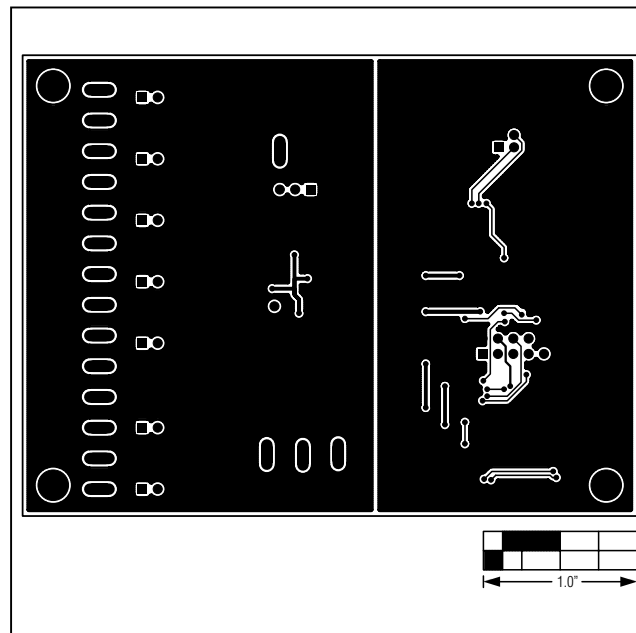


Figure 7. MAX6581 EV Kit PCB Layout—Solder Side

MAX6581 Evaluation Kit

Evaluates: MAX6581

Revision History

REVISION NUMBER	REVISION DATE	DESCRIPTION	PAGES CHANGED
0	9/10	Initial release	—



Maxim Integrated cannot assume responsibility for use of any circuitry other than circuitry entirely embodied in a Maxim Integrated product. No circuit patent licenses are implied. Maxim Integrated reserves the right to change the circuitry and specifications without notice at any time. The parametric values (min and max limits) shown in the Electrical Characteristics table are guaranteed. Other parametric values quoted in this data sheet are provided for guidance.

Maxim Integrated 160 Rio Robles, San Jose, CA 95134 USA 1-408-601-1000

15

Компания «Океан Электроники» предлагает заключение долгосрочных отношений при поставках импортных электронных компонентов на взаимовыгодных условиях!

Наши преимущества:

- Поставка оригинальных импортных электронных компонентов напрямую с производств Америки, Европы и Азии, а так же с крупнейших складов мира;
- Широкая линейка поставок активных и пассивных импортных электронных компонентов (более 30 млн. наименований);
- Поставка сложных, дефицитных, либо снятых с производства позиций;
- Оперативные сроки поставки под заказ (от 5 рабочих дней);
- Экспресс доставка в любую точку России;
- Помощь Конструкторского Отдела и консультации квалифицированных инженеров;
- Техническая поддержка проекта, помощь в подборе аналогов, поставка прототипов;
- Поставка электронных компонентов под контролем ВП;
- Система менеджмента качества сертифицирована по Международному стандарту ISO 9001;
- При необходимости вся продукция военного и аэрокосмического назначения проходит испытания и сертификацию в лаборатории (по согласованию с заказчиком);
- Поставка специализированных компонентов военного и аэрокосмического уровня качества (Xilinx, Altera, Analog Devices, Intersil, Interpoint, Microsemi, Actel, Aeroflex, Peregrine, VPT, Syfer, Eurofarad, Texas Instruments, MS Kennedy, Miteq, Cobham, E2V, MA-COM, Hittite, Mini-Circuits, General Dynamics и др.);

Компания «Океан Электроники» является официальным дистрибьютором и эксклюзивным представителем в России одного из крупнейших производителей разъемов военного и аэрокосмического назначения «JONHON», а так же официальным дистрибьютором и эксклюзивным представителем в России производителя высокотехнологичных и надежных решений для передачи СВЧ сигналов «FORSTAR».



JONHON

«JONHON» (основан в 1970 г.)

Разъемы специального, военного и аэрокосмического назначения:

(Применяются в военной, авиационной, аэрокосмической, морской, железнодорожной, горно- и нефтедобывающей отраслях промышленности)

«FORSTAR» (основан в 1998 г.)

ВЧ соединители, коаксиальные кабели, кабельные сборки и микроволновые компоненты:

(Применяются в телекоммуникациях гражданского и специального назначения, в средствах связи, РЛС, а так же военной, авиационной и аэрокосмической отраслях промышленности).



Телефон: 8 (812) 309-75-97 (многоканальный)

Факс: 8 (812) 320-03-32

Электронная почта: ocean@oceanchips.ru

Web: <http://oceanchips.ru/>

Адрес: 198099, г. Санкт-Петербург, ул. Калинина, д. 2, корп. 4, лит. А