

General Description

The MAX2831 evaluation kit (EV kit) simplifies testing of the MAX2831 receive and transmit performance in 802.11g/b applications operating in the 2.4GHz to 2.5GHz ISM band. The EV kit provides 50Ω SMA connectors for all RF and baseband inputs and outputs. Differential-to-single-ended and single-ended-to-differential line drivers are provided to convert the differential I/Q baseband inputs and outputs to single ended.

Component List

DESIGNATION	QTY	DESCRIPTION
C1	1	33pF ±5% capacitor (0402) Murata GRM1555C1H330J
C3, C16, C70, C79, C81, C89	6	100pF ±5% capacitors (0402) Murata GRM1555C1H101J
C4	1	18pF ±5% capacitor (0402) Murata GRM1555C1H180J
C5, C7, C10, C11, C13, C17, C18, C21, C22, C29, C40, C42, C43, C45, C46, C50, C52, C54, C59, C60, C64, C67, C83, C86	24	100nF ±10% capacitors (0402) Murata GRM155R61A104K
C6, C9, C30, C41, C62, C73, C74, C75, C87, C88	10	0.01µF ±10% capacitors (0402) Murata GRM155R71C103K
C8, C44, C48, C49, C71, C72, C77	0	Not installed, capacitors
C12, C51, C53, C55, C63, C65, C66	7	10µF ±20% tantalum capacitors (R-case) AVX TAJR106M006
C61	1	10µF ±10% capacitor (1206) Murata GRM31CR60J106K
C68, C69	2	1.5pF ±0.25pF capacitors (0402) Murata GRM1555C1H1R5C
C76	1	1000pF ±10% capacitor (0402) Murata GRM155R71H102K
C78	1	2200pF ±10% capacitor (0402) Murata GRM155R71H222K

Features

- On-Board Line Driver and Voltage Reference
- 50Ω SMA Connectors on All RF and Baseband Ports
- PC Control Software Available at www.maximintegrated.com

Ordering Information

PART	TYPE
MAX2831EVKIT+	EV Kit

+Denotes a lead(Pb)-free and RoHS-compliant EV kit.

DESIGNATION	QTY	DESCRIPTION
C80	1	68pF ±5% capacitor (0402) Murata GRM1555C1H680J
C82	1	10µF ±10% capacitor (0805) Murata GRM21BR60J106K
J17	0	Not installed
J18	1	DB25 right-angle male connector AMP 5747238-4
JPB1–JPB4, JPB6, JPB7, JPCSB, JPDIN, JPLD, JPRXHP, JPSCCLK, JP SHDNB	0	Not installed
L1, L2, L7	0	Not installed
LDO_IN, VREG	2	1 x 2 headers Sullins PEC36SAAN
R1, R2, R6, R10, R16, R17, R22, R27	8	75Ω ±1% resistors (0402)
R3, R7, R18, R23	4	3.3kΩ ±5% resistors (0402)
R4, R5, R21, R26	4	49.9Ω ±1% resistors (0402)
R8, R9, R12, R13, R28, R29, R31, R32	8	0Ω ±1% resistors (0402)
R11, R30, R38, R46, R50	0	Not installed, resistors
R14	1	270Ω ±5% resistor (0402)
R39, R45	2	100Ω ±1% resistors (0402)
R43	1	1kΩ ±1% resistor (0402)
R51	1	1.2kΩ ±5% resistor (0402)

Component List (continued)

DESIGNATION	QTY	DESCRIPTION
R52	1	750Ω ±5% resistor (0402)
R53	1	10kΩ ±5% resistor (0402)
T1	0	Not installed
T2, T3	2	2.4GHz RF baluns Murata LDB212G4010C-001
U1, U5	2	Line drivers (16 SO) Maxim MAX4447ESE+
U2, U6	2	Line receivers (16 SO) Maxim MAX4444ESE+
U3	1	Low-dropout reference (3 SOT) Maxim MAX6061BEUR+
U4	1	Transceiver (48 TQFN) Maxim MAX2831ETM+
U8, U9	2	SN74LVTH244ADB TI SN74LVTH244ADBR
U10	0	Not installed (optional) Maxim MAX8882EUTJJ+
Y1	1	40MHz crystal Kyocera CX3225SB40000H0WZK21
+5V, -5V, B1–B7, CSB, DIN, GND1, GND2, LD, RSSI, RXBBI+, RXBBI-, RXBBQ+, RXBBQ-, RXHP, SCLK, SHDNB, TPANTSEL, TPCLKOUT, TPRXTX, TPTUNE, TPTXCMIN, TXBBI+ TXBBI-, TXBBQ+, TXBBQ-, VBAT, VCCAUX	33	Test points Keystone 5000

DESIGNATION	QTY	DESCRIPTION
CLKOUT, FREF, RXBBI, RXBBQ, RXRF, TXBBI, TXBBQ, TXRF	8	SMA edge-mount connectors, round Johnson 142-0701-801
VCCLNA, VCCPA1, VCCPA2, VCCPLL, VCCRABB1, VCCRABB2, VCCRXXM, VCCXTAL, VCC_DB, VCC_REF, VREG	0	Not installed
—	6	Shunts (ANTSEL, LDO_IN, RXBBBUF, RXTX, TXBBBUF, VCCVCO) Sullins SSC02SYAN
—		PCB: MAX2830/1/2 EVALUATION KIT

Component Suppliers

SUPPLIER	WEBSITE
AVX Corp.	www.avx.com
Digi-Key Corp.	www.digikey.com
Johnson Components	www.johnsoncomponents.com
Murata Americas	www.murataamericas.com
Texas Instruments Inc.	www.ti.com

Note: Indicate that you are using the MAX2831 when contacting these component suppliers.

Quick Start

The MAX2831 EV kit is fully assembled and factory tested. Follow the instructions in the *Connections and Setup* section to test the devices.

Test Equipment Required

This section lists the recommended test equipment to verify the operation of the MAX2831. It is intended as a guide only and substitutions may be possible:

- MAX2831 EV kit
- DC supply capable of delivering +5V and 200mA of continuous current
- DC supply capable of delivering -5V and 200mA of continuous current
- DC supply capable of delivering +3.3V and 300mA of continuous current
- DC supply capable of delivering +2.85V and 200mA of continuous current
- Two HP8648s or equivalent signal sources capable of generating 0dBm up to 3GHz
- 802.11b/g OFDM I/Q waveform generator
- HP8561E or equivalent RF spectrum analyzer with a minimum 100kHz to 3GHz frequency range
- TDS3012 or equivalent oscilloscope with 200MHz bandwidth
- HP437B power meter and power head
- PC laptop or tablet with Microsoft Windows XP®, Windows® 7, 8 OS and a USB port
- USB-A male to USB-B male cable
- US keyboard
- RF coupler

Connections and Setup

This section provides step-by-step instructions for getting the EV kit up and running in all modes:

- 1) Install and run the MAX2831 control software, available for download at www.maximintegrated.com/evkitsoftware.
- 2) Connect the PC to the INTF3000 interface board using the USB-A male to USB-B male cable. On INTF3000, place a jumper between pins 1-2 on JU1 (VBUS Pos). Connect the 25-pin connector of the INTF3000 (J4) directly to the 25-pin connector on the EV kit (J18).

Windows and Windows XP are registered trademarks and registered service marks of Microsoft Corporation.

- 3) With the power supply turned off, connect a +2.85V power supply to VREG (pin 1, ■), VCCVCO (pins 2-3, ●●), and VCCAUX, and a +3.3V power supply to VBAT. Connect the power-supply ground to the header labeled GND1 or GND2.
- 4) With the power supply turned off, connect a +5V power supply to the +5V pin and a -5V power supply to the -5V pin. Connect the power-supply ground to the header labeled GND1 or GND2. Connect all the power-supply grounds together.
- 5) Turn on the +3.3V power supply, followed by the +2.85V power supply, +5V power supply, and -5V power supply.

Receive Mode

- 1) Set the RXTX jumper across pins 2-3 (RX) to enable the receiver and disable the transmitter.
- 2) Use the power meter to calibrate the RF signal generator to deliver -100dBm at 2438MHz. After calibration, turn the RF signal generator off, disconnect it from the power meter, and connect it to the receive port of the MAX2831 EV kit.
- 3) On the register-setting page of the EV kit software, set the register setting to the recommended setting in the MAX2831 data sheet by clicking the “send all” button. On the entry page, confirm that the receive mode is set to “normal,” baseband filter is set to “RX,” and the RF frequency is tuned to 2437MHz. Maximize the LNA gain and adjust the baseband gain using the RX VGA gain setting to achieve 98dB of gain.
- 4) Connect the spectrum analyzer to either RXBBI or RXBBQ. Set the center frequency to 1MHz with a span of 500kHz.
- 5) Turn on the RF signal source. The output CW tone at 1MHz should be approximately -2dBm.

Transmit Mode

- 1) Set the RXTX jumper across pins 1-2 (TX) to enable the transmitter and disable the receiver.
- 2) Connect a decoupler and a 10dB attenuator to the TXRF. Connect the spectrum analyzer and the power meter to the outputs of the decoupler.
- 3) Connect a 1MHz I/Q signal to TXBBI and TXBBQ. Set the input amplitude of each channel to 100mV_{RMS}.

Table 1. Jumper Functions

JUMPER	SETTING	FUNCTION
RXTX	Pins 2-3	Enable receive mode
	Pins 1-2	Enable transmit mode
ANTSEL	Pins 2-3	Default
TXBBBUF/RXBBBUF	Pins 1-2	Enables the buffers
	Pins 2-3	Disables the buffers
VREG	Pins 1-2	Short the jumper to provide voltage to the MAX2831 from the linear regulator (U10)
VCCVCO	Pins 2-3	Supply the VCCVCO from VREG
	Pins 1-2	Supply the VCCVCO from the linear regulator (U10)

Note: A square symbol (■) on top-layer silkscreen indicates pin 1.

- 4) On the register-setting page of the EV kit software, set the register setting to the recommended register setting listed in the MAX2831 data sheet. Make sure that the transmitter mode is set to “normal,” baseband filter is set to “TX,” and the RF frequency is tuned to 2437MHz.
- 5) Enable the output of the baseband signal sources. The sideband, LO leakage, and the carrier appear at 2436MHz, 2437MHz, and 2438MHz, respectively. Adjust the TX gain sliding bar to observe the power level in the power meter reading.

Power-Supply Layout

To minimize coupling between different sections of the IC, use a star power-supply routing configuration with a large decoupling capacitor at a central V_{CC} node. The V_{CC} traces branch out from this node, each going to a separate V_{CC} node in the circuit. Place a bypass capacitor as close as possible to each supply pin. This arrangement provides local decoupling at each V_{CC} pin. Use at least one via per bypass capacitor for a low-inductance ground connection. Do not share the capacitor ground vias with any other branch.

Layout Considerations

The MAX2831 EV kit can serve as a guide for board layout. Keep PCB trace lengths as short as possible to minimize parasitic inductance. Also, keep decoupling capacitors as close to the IC as possible with a direct connection to the ground plane.

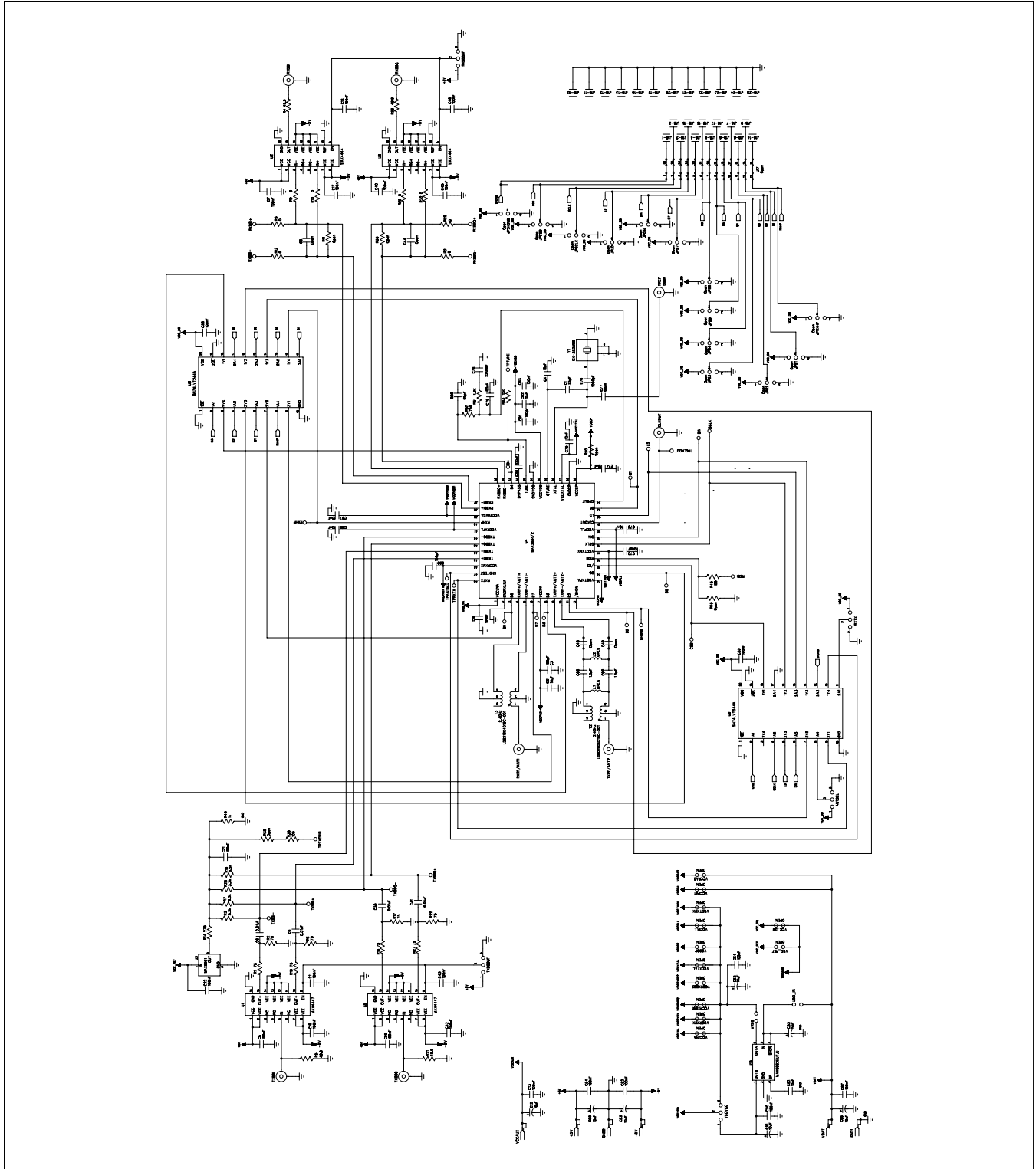


Figure 1. MAX2831 EV Kit Schematic

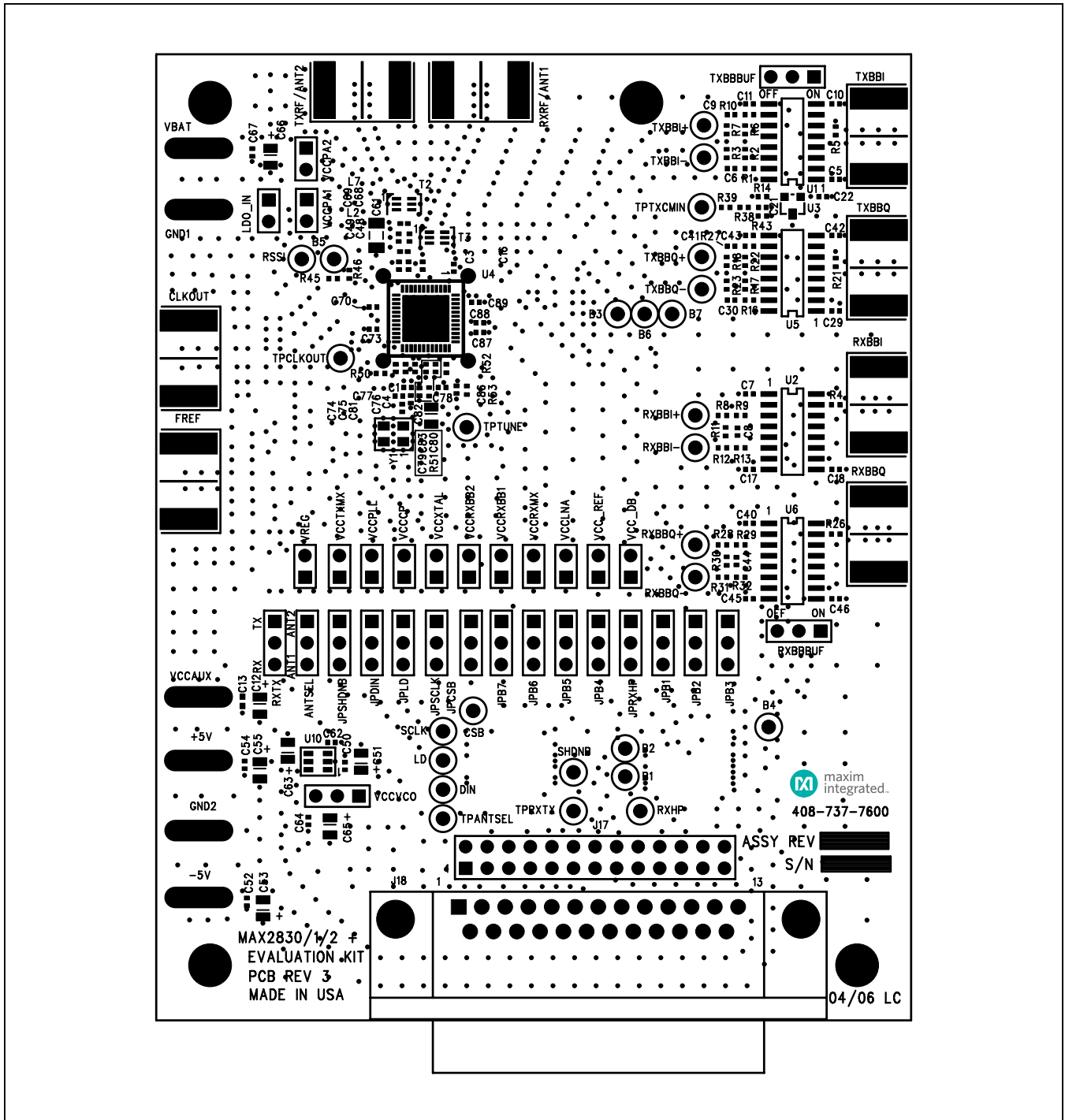


Figure 2. MAX2831 EV Kit PCB Layout—Top Silkscreen

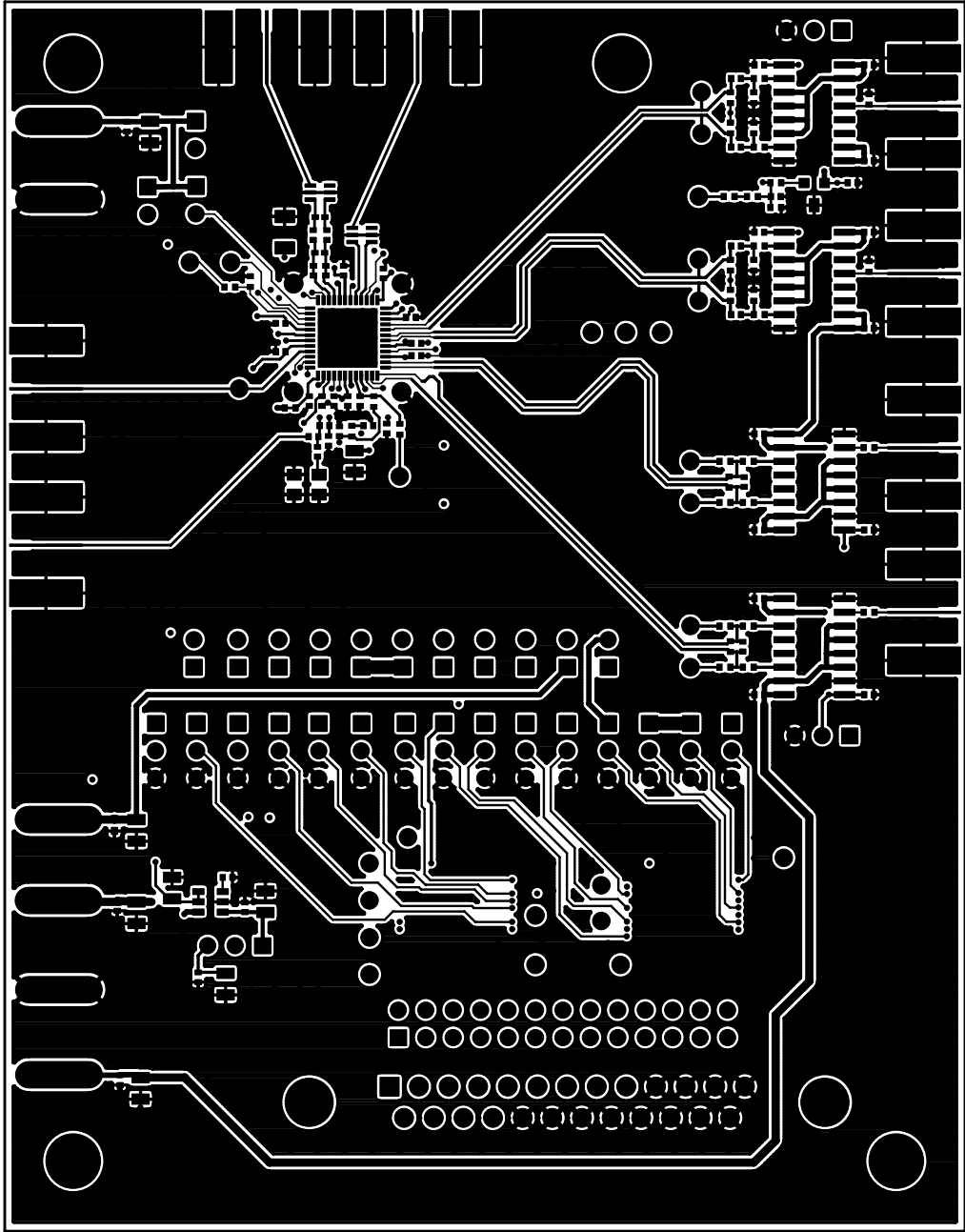


Figure 3. MAX2831 EV Kit PCB Layout—Component Side

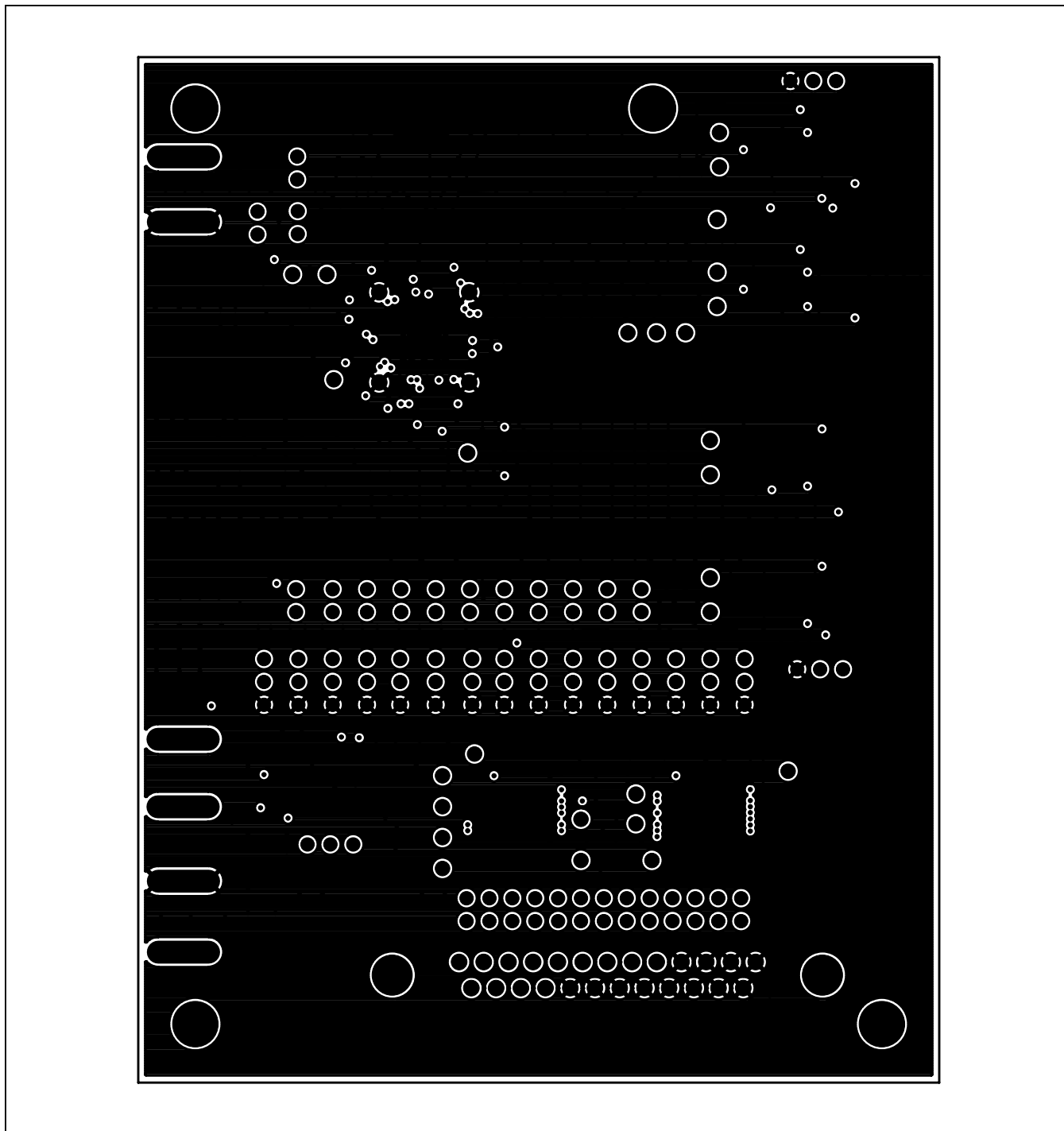


Figure 4. MAX2831 EV Kit PCB Layout—Inner Layer 2 (Ground Layer)

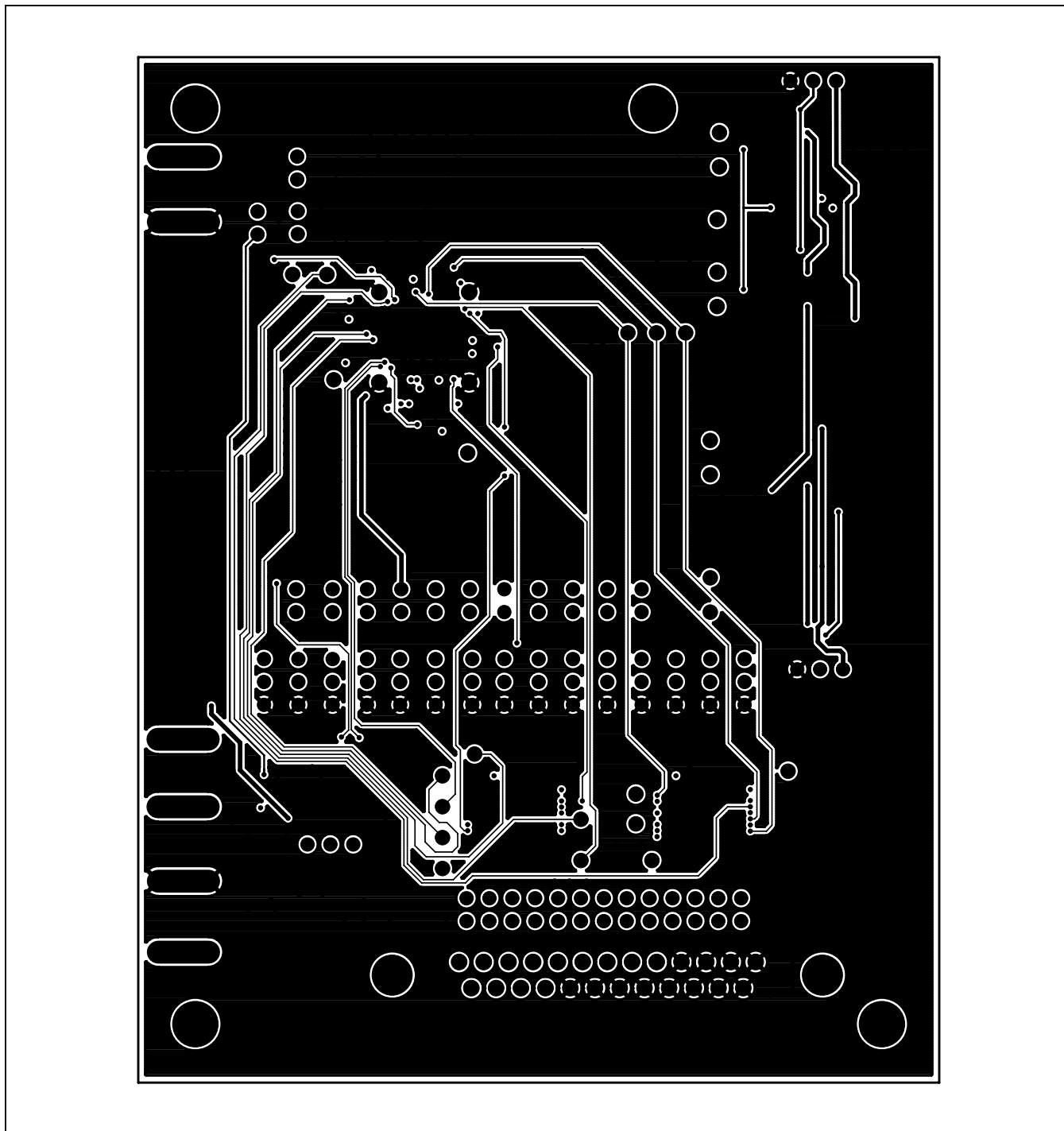


Figure 5. MAX2831 EV Kit PCB Layout—Inner Layer 3 (Routes)

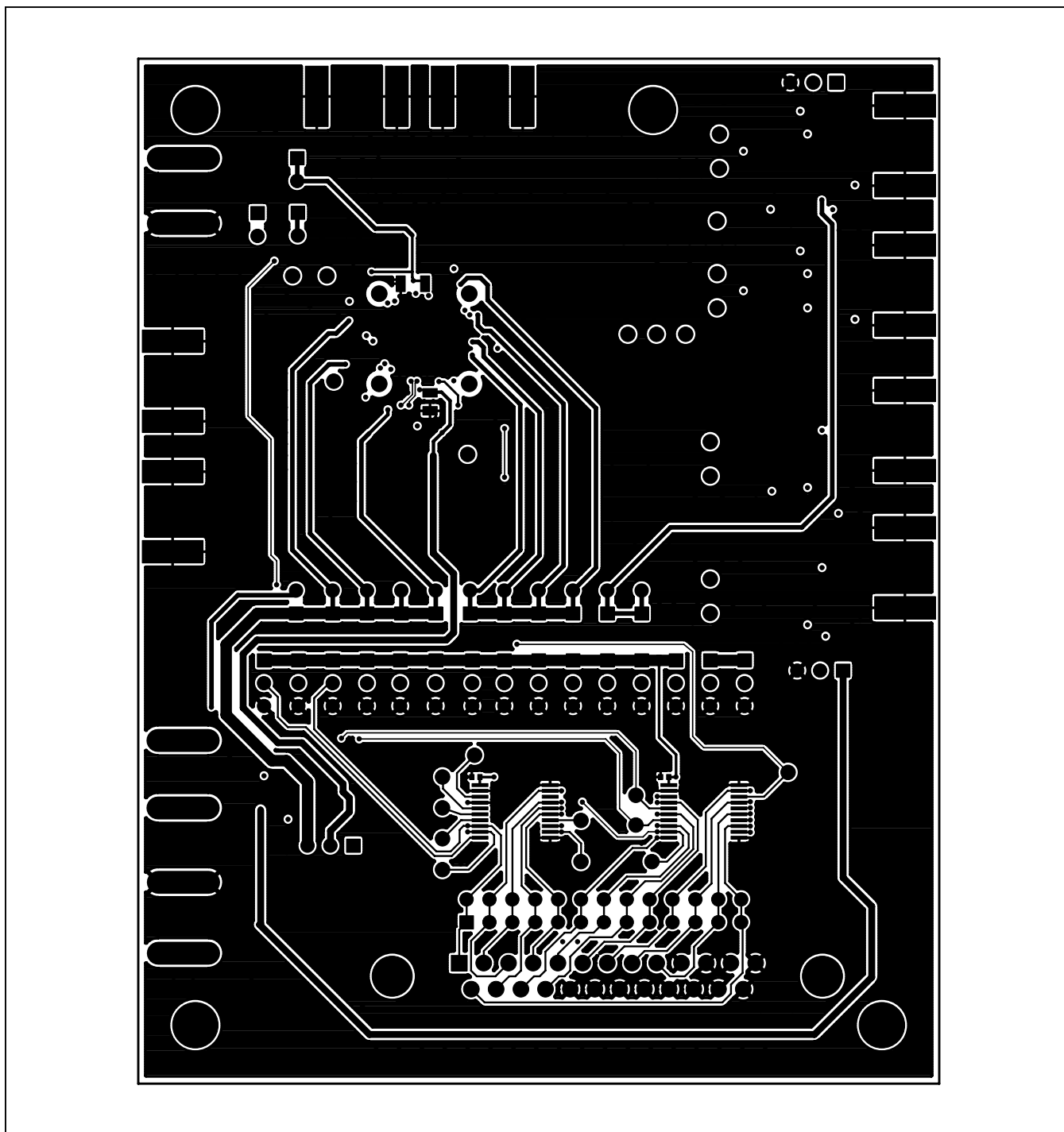


Figure 6. MAX2831 EV Kit PCB Layout—Solder Side

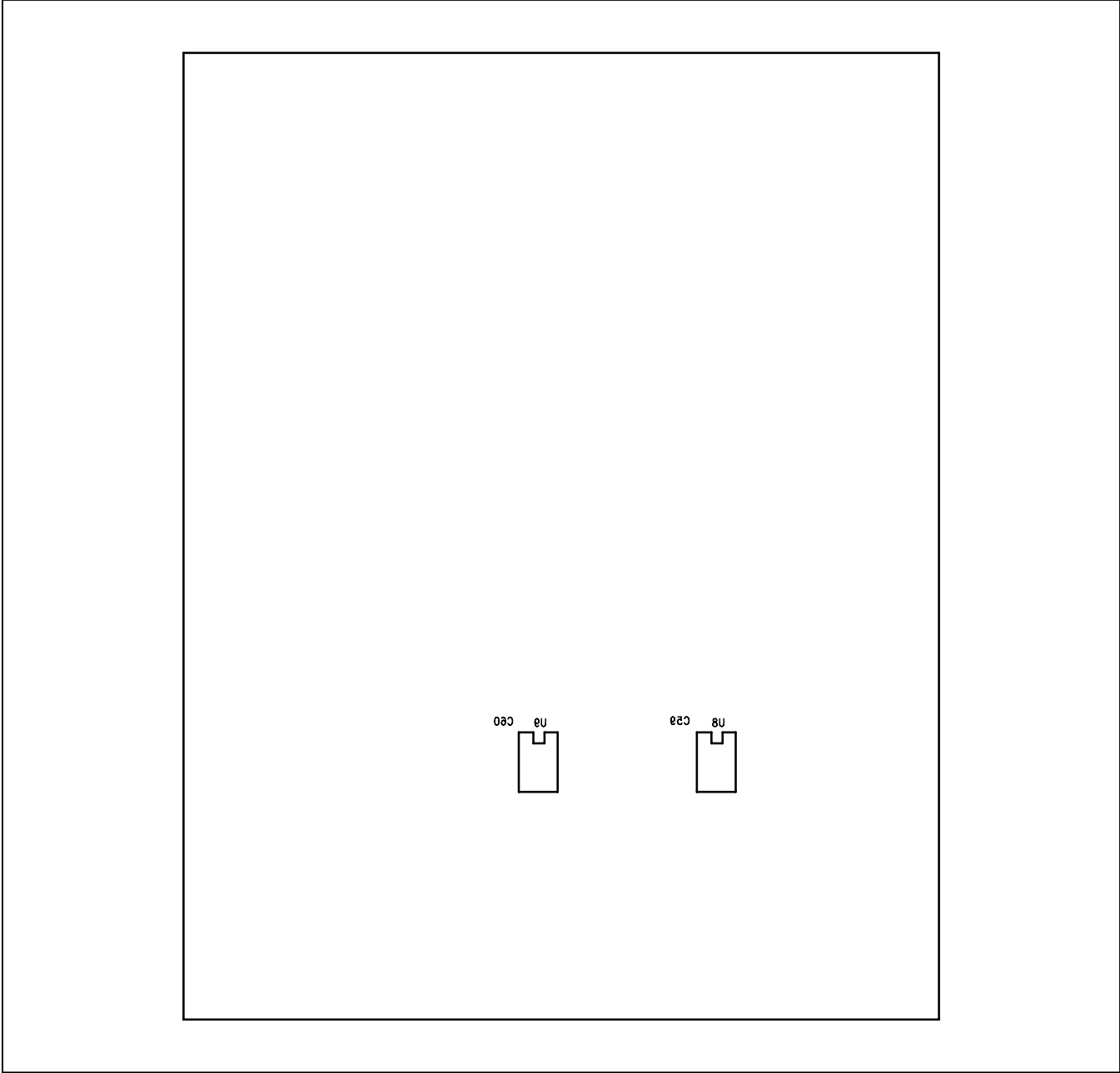


Figure 7. MAX2831 EV Kit PCB Layout—Bottom Silkscreen

Revision History

REVISION NUMBER	REVISION DATE	DESCRIPTION	PAGES CHANGED
0	5/07	Initial release	—
1	11/14	Updated <i>Quick Start</i> section	3

For pricing, delivery, and ordering information, please contact Maxim Direct at 1-888-629-4642, or visit Maxim Integrated's website at www.maximintegrated.com.

Maxim Integrated cannot assume responsibility for use of any circuitry other than circuitry entirely embodied in a Maxim Integrated product. No circuit patent licenses are implied. Maxim Integrated reserves the right to change the circuitry and specifications without notice at any time.

Компания «Океан Электроники» предлагает заключение долгосрочных отношений при поставках импортных электронных компонентов на взаимовыгодных условиях!

Наши преимущества:

- Поставка оригинальных импортных электронных компонентов напрямую с производств Америки, Европы и Азии, а так же с крупнейших складов мира;
- Широкая линейка поставок активных и пассивных импортных электронных компонентов (более 30 млн. наименований);
- Поставка сложных, дефицитных, либо снятых с производства позиций;
- Оперативные сроки поставки под заказ (от 5 рабочих дней);
- Экспресс доставка в любую точку России;
- Помощь Конструкторского Отдела и консультации квалифицированных инженеров;
- Техническая поддержка проекта, помощь в подборе аналогов, поставка прототипов;
- Поставка электронных компонентов под контролем ВП;
- Система менеджмента качества сертифицирована по Международному стандарту ISO 9001;
- При необходимости вся продукция военного и аэрокосмического назначения проходит испытания и сертификацию в лаборатории (по согласованию с заказчиком);
- Поставка специализированных компонентов военного и аэрокосмического уровня качества (Xilinx, Altera, Analog Devices, Intersil, Interpoint, Microsemi, Actel, Aeroflex, Peregrine, VPT, Syfer, Eurofarad, Texas Instruments, MS Kennedy, Miteq, Cobham, E2V, MA-COM, Hittite, Mini-Circuits, General Dynamics и др.);

Компания «Океан Электроники» является официальным дистрибьютором и эксклюзивным представителем в России одного из крупнейших производителей разъемов военного и аэрокосмического назначения «**JONHON**», а так же официальным дистрибьютором и эксклюзивным представителем в России производителя высокотехнологичных и надежных решений для передачи СВЧ сигналов «**FORSTAR**».



JONHON

«**JONHON**» (основан в 1970 г.)

Разъемы специального, военного и аэрокосмического назначения:

(Применяются в военной, авиационной, аэрокосмической, морской, железнодорожной, горно- и нефтедобывающей отраслях промышленности)

«**FORSTAR**» (основан в 1998 г.)

ВЧ соединители, коаксиальные кабели,
кабельные сборки и микроволновые компоненты:

(Применяются в телекоммуникациях гражданского и специального назначения, в средствах связи, РЛС, а так же военной, авиационной и аэрокосмической отраслях промышленности).



Телефон: 8 (812) 309-75-97 (многоканальный)

Факс: 8 (812) 320-03-32

Электронная почта: ocean@oceanchips.ru

Web: <http://oceanchips.ru/>

Адрес: 198099, г. Санкт-Петербург, ул. Калинина, д. 2, корп. 4, лит. А