

## Dual N-Channel 2.5-V (G-S) Input Protected Load Switch

| PRODUCT SUMMARY |                           |           |              |
|-----------------|---------------------------|-----------|--------------|
| $V_{DS}$ (V)    | $R_{DS(on)}$ ( $\Omega$ ) | $I_D$ (A) | $Q_g$ (Typ.) |
| 20              | 0.030 at $V_{GS} = 4.5$ V | 4.5       | 7.6          |
|                 | 0.033 at $V_{GS} = 3.0$ V | 4.2       |              |
|                 | 0.035 at $V_{GS} = 2.5$ V | 3.9       |              |

### FEATURES

- Halogen-free
- Low  $R_{DS(on)}$
- $V_{GS}$  Max Rating: 14 V
- Exceeds 2 kV ESD Protection


**RoHS**  
COMPLIANT

### DESCRIPTION

The Si6926AEDQ is a dual N-Channel MOSFET with ESD protection and gate over-voltage protection circuitry incorporated into the MOSFET. The device is designed for use in Lithium Ion battery pack circuits. The 2-stage input protection circuit is a unique design, consisting of two stages of back-to-back zener diodes separated by a resistor. The first stage diode is designed to absorb most of the ESD energy. The second stage diode is designed to protect the gate from any remaining ESD energy and over-voltages

above the gates inherent safe operating range. The series resistor used to limit the current through the second stage diode during over voltage conditions has a maximum value which limits the input current to  $\leq 10$  mA at 14 V and the maximum  $t_{off}$  to 15  $\mu$ s. The Si6926AEDQ has been optimized as a battery or load switch in Lithium Ion applications with the advantage of both a 2.5 V  $R_{DS(on)}$  rating and a safe 14 V gate-to-source maximum rating.

### APPLICATION CIRCUITS

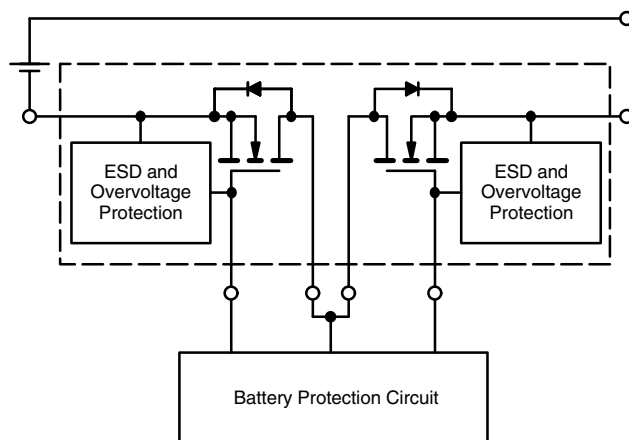
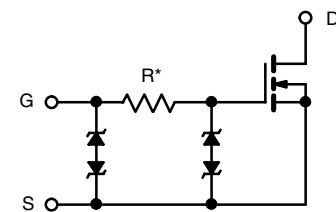


Figure 1. Typical Use In a Lithium Ion Battery Pack

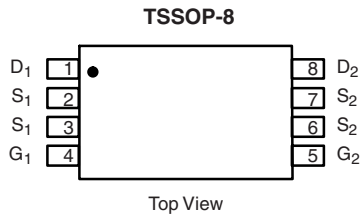


\*R typical value is 1.9 k $\Omega$  by design.

See Typical Characteristics,  
Gate-Current vs. Gate-Source Voltage, Page 3.

Figure 2. Input ESD and Overvoltage Protection Circuit

## FUNCTIONAL BLOCK DIAGRAM AND PIN CONFIGURATION



Ordering Information: Si6926AEDQ-T1-GE3 (Lead (Pb)-free and Halogen-free)

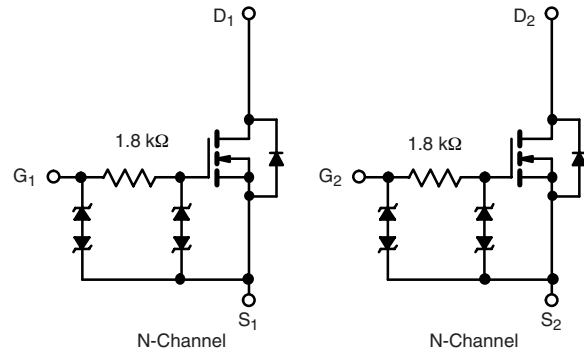


Figure 3.

Figure 4.

| ABSOLUTE MAXIMUM RATINGS $T_A = 25\text{ }^\circ\text{C}$ , unless otherwise noted    |                |                                  |              |                  |   |
|---|----------------|----------------------------------|--------------|------------------|---|
| Parameter   | Symbol         | 10 s                             | Steady State | Unit             |   |
| Drain-Source Voltage, Source-Drain Voltage  | $V_{DS}$       | 20                               |              | V                |   |
| Gate-Source Voltage   | $V_{GS}$       | $\pm 14$                         |              |                  |   |
| Continuous Drain-to-Source Current ( $T_J = 150\text{ }^\circ\text{C}$ ) <sup>a</sup> | $I_D$          | $T_A = 25\text{ }^\circ\text{C}$ | 4.5          | 4.1              | A |
|   |                | $T_A = 70\text{ }^\circ\text{C}$ | 3.6          | 3.3              |   |
| Pulsed Drain-to-Source Current  | $I_{DM}$       | 20                               |              |                  |   |
| Pulsed Source Current (Diode Conduction) <sup>a</sup>                                 | $I_S$          | 0.83                             | 0.69         |                  |   |
| Maximum Power Dissipation <sup>a</sup>  | $P_D$          | $T_A = 25\text{ }^\circ\text{C}$ | 1.0          | 0.83             | W |
|   |                | $T_A = 70\text{ }^\circ\text{C}$ | 0.64         | 0.53             |   |
| Operating Junction and Storage Temperature Range                                      | $T_J, T_{stg}$ | - 55 to 150                      |              | $^\circ\text{C}$ |   |

| THERMAL RESISTANCE RATINGS               |                      |            |         |         |                    |
|--|----------------------|------------|---------|---------|--------------------|
| Parameter                                |                      | Symbol     | Typical | Maximum | Unit               |
| Maximum Junction-to-Ambient <sup>a</sup> | $t \leq 10\text{ s}$ | $R_{thJA}$ | 90      | 125     | $^\circ\text{C/W}$ |
|  | Steady State         |            | 126     | 150     |                    |
| Maximum Junction-to-Foot (Drain)         | Steady State         | $R_{thJF}$ | 65      | 80      |                    |

Notes:

a. Surface Mounted on FR4 board.

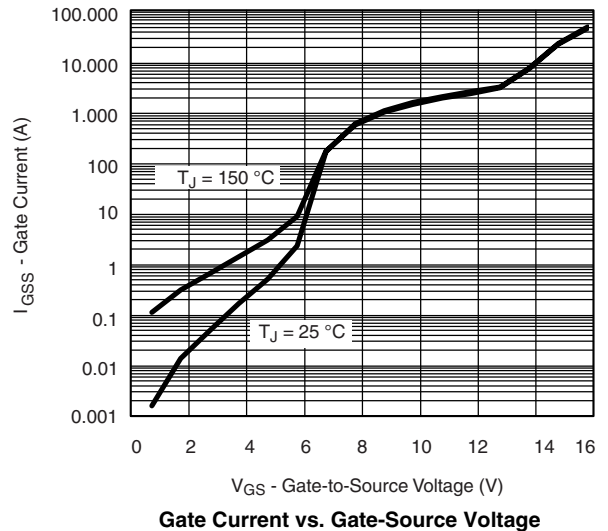
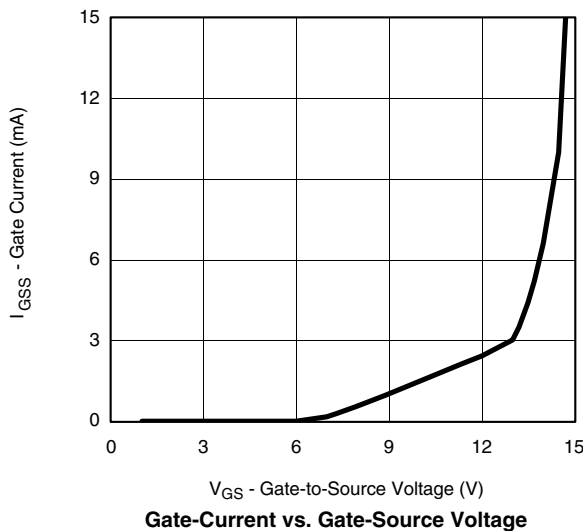
| <b>SPECIFICATIONS</b> $T_J = 25\text{ }^\circ\text{C}$ , unless otherwise noted |              |   |      |       |          |               |
|---|--------------|---|------|-------|----------|---------------|
| Parameter   | Symbol       | Test Conditions   | Min. | Typ.  | Max.     | Unit          |
| <b>Static</b>   |              |   |      |       |          |               |
| Gate Threshold Voltage  | $V_{GS(th)}$ | $V_{DS} = V_{GS}, I_D = 250\text{ }\mu\text{A}$   | 0.4  |       | 1.2      | V             |
| Gate-Body Leakage   | $I_{GSS}$    | $V_{DS} = 0\text{ V}, V_{GS} = \pm 4.5\text{ V}$  |      |       | $\pm 1$  | $\mu\text{A}$ |
|   |              | $V_{DS} = 0\text{ V}, V_{GS} = \pm 12\text{ V}$   |      |       | $\pm 10$ | $\text{mA}$   |
| Zero Gate Voltage Drain Current   | $I_{DSS}$    | $V_{DS} = 20\text{ V}, V_{GS} = 0\text{ V}$   |      |       | 1        | $\mu\text{A}$ |
|   |              | $V_{DS} = 20\text{ V}, V_{GS} = 0\text{ V}, T_J = 55\text{ }^\circ\text{C}$   |      |       | 5        |               |
| On-State Drain Current <sup>b</sup>   | $I_{D(on)}$  | $V_{DS} \geq 5\text{ V}, V_{GS} = 5\text{ V}$   | 10   |       |          | A             |
| Drain-Source On-State Resistance <sup>b</sup>                                   | $R_{DS(on)}$ | $V_{GS} = 4.5\text{ V}, I_D = 4.5\text{ A}$   |      | 0.023 | 0.030    | $\Omega$      |
|   |              | $V_{GS} = 3.0\text{ V}, I_D = 4.2\text{ A}$   |      | 0.025 | 0.033    |               |
|   |              | $V_{GS} = 2.5\text{ V}, I_D = 3.9\text{ A}$   |      | 0.027 | 0.035    |               |
| Forward Transconductance <sup>b</sup>   | $g_{fs}$     | $V_{DS} = 10\text{ V}, I_D = 4.5\text{ A}$  |      | 26    |          | S             |
| Diode Forward Voltage <sup>b</sup>  | $V_{SD}$     | $I_S = 0.83\text{ A}, V_{GS} = 0\text{ V}$  |      | 0.65  | 1.1      | V             |
| <b>Dynamic<sup>a</sup></b>  |              |   |      |       |          |               |
| Total Gate Charge   | $Q_g$        | $V_{DS} = 10\text{ V}, V_{GS} = 4.5\text{ V}, I_D = 4.5\text{ A}$   |      | 7.6   | 12       | nC            |
| Gate-Source Charge  | $Q_{gs}$     |   |      | 1.5   |          |               |
| Gate-Drain Charge   | $Q_{gd}$     |   |      | 1.5   |          |               |
| Turn-On Delay Time  | $t_{d(on)}$  | $V_{DD} = 10\text{ V}, R_L = 10\text{ }\Omega$<br>$I_D \cong 1\text{ A}, V_{GEN} = 4.5\text{ V}, R_g = 6\text{ }\Omega$ |      | 0.43  | 0.7      | $\mu\text{s}$ |
| Rise Time   | $t_r$        |   |      | 0.8   | 1.2      |               |
| Turn-Off Delay Time   | $t_{d(off)}$ |   |      | 5.0   | 7.5      |               |
| Fall Time   | $t_f$        |   |      | 2.5   | 4.0      |               |

Notes:

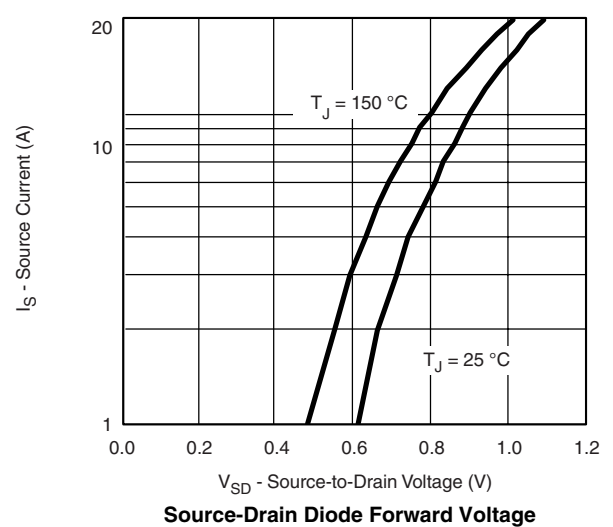
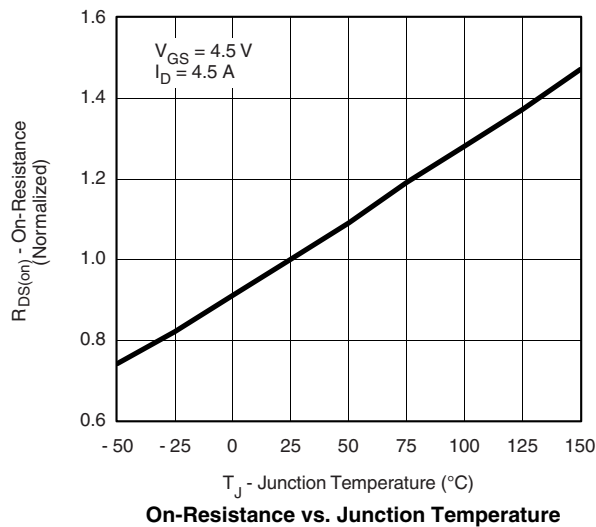
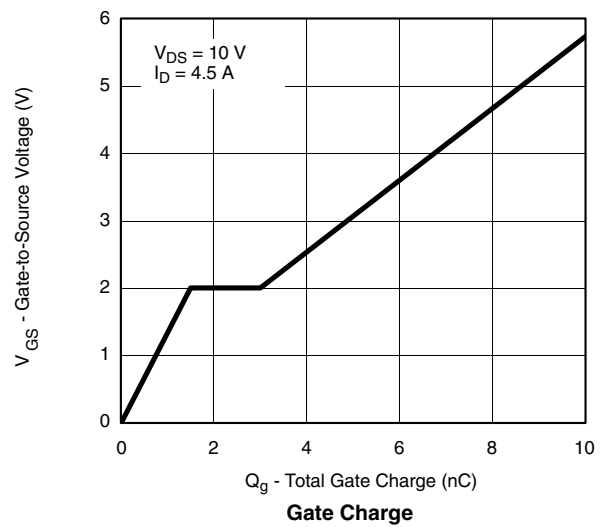
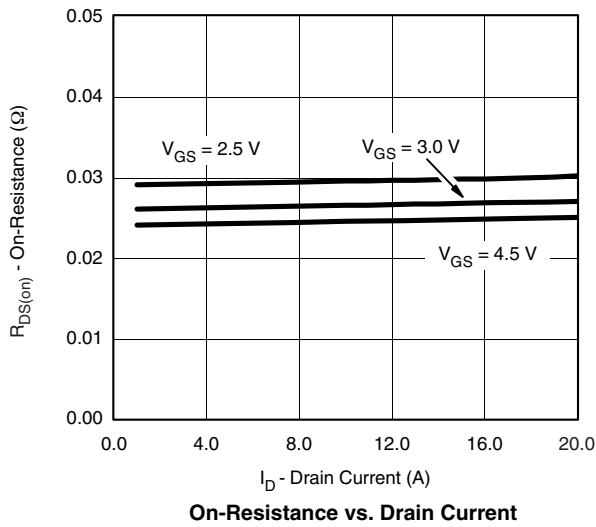
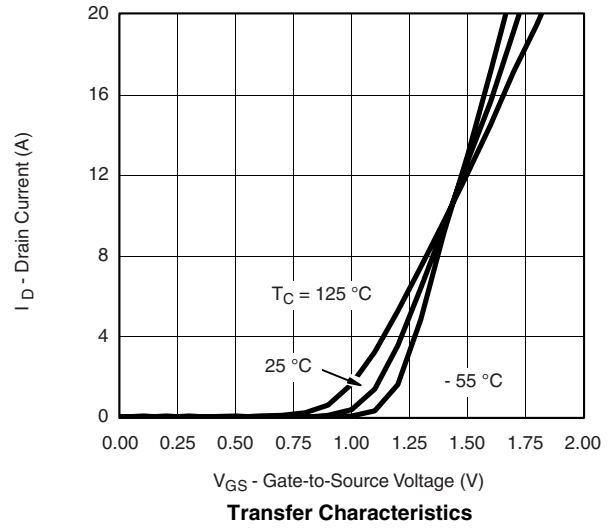
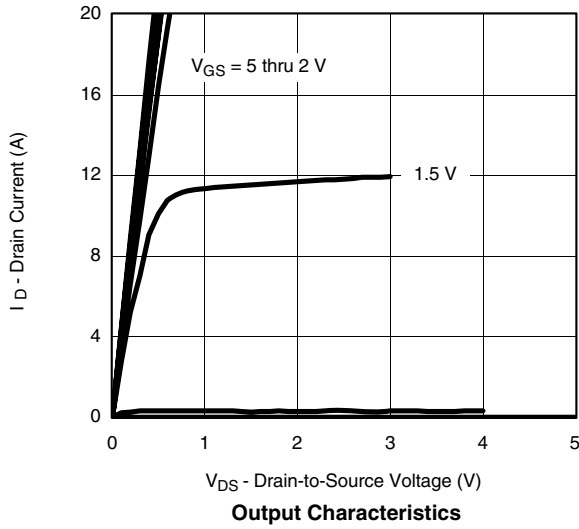
- a. Guaranteed by design, not subject to production testing.
- b. Pulse test; pulse width  $\leq 300\text{ }\mu\text{s}$ , duty cycle  $\leq 2\%$ .

Stresses beyond those listed under "Absolute Maximum Ratings" may cause permanent damage to the device. These are stress ratings only, and functional operation of the device at these or any other conditions beyond those indicated in the operational sections of the specifications is not implied. Exposure to absolute maximum rating conditions for extended periods may affect device reliability.

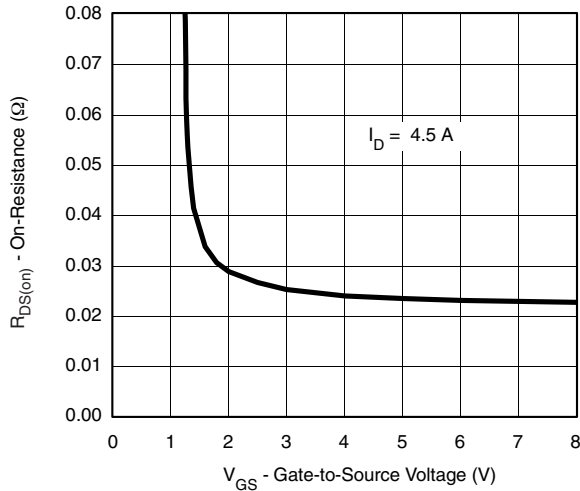
**TYPICAL CHARACTERISTICS**  $25\text{ }^\circ\text{C}$ , unless otherwise noted



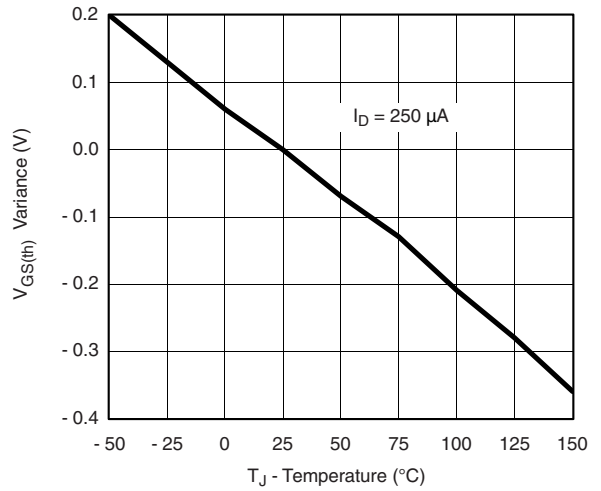
**TYPICAL CHARACTERISTICS** 25 °C, unless otherwise noted



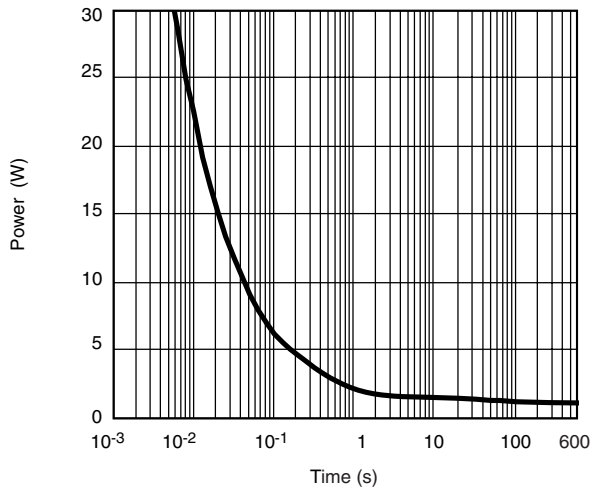
**TYPICAL CHARACTERISTICS** 25 °C, unless otherwise noted



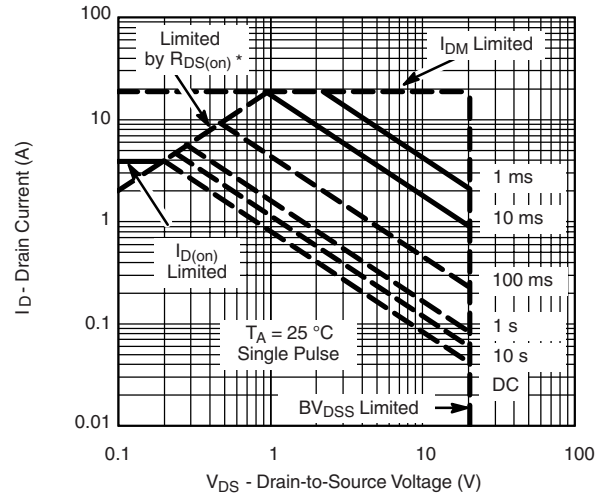
**On-Resistance vs. Gate-to-Source Voltage**



**Threshold Voltage**

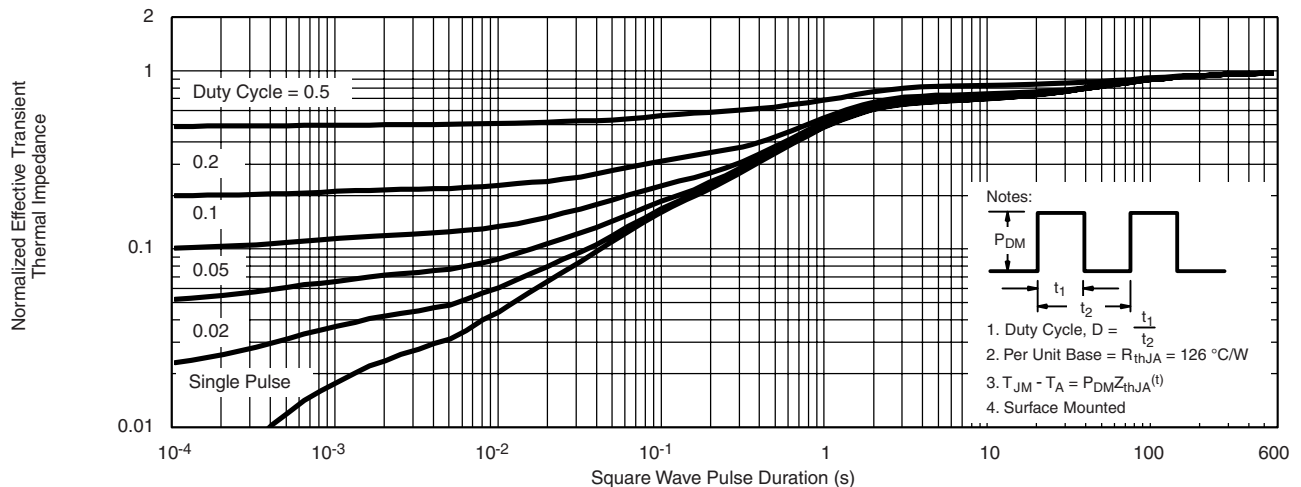


**Single Pulse Power, Junction-to-Ambient**



\*  $V_{GS}$  > minimum  $V_{GS}$  at which  $R_{DS(on)}$  is specified

**Safe Operating Area, Junction-to-Case**

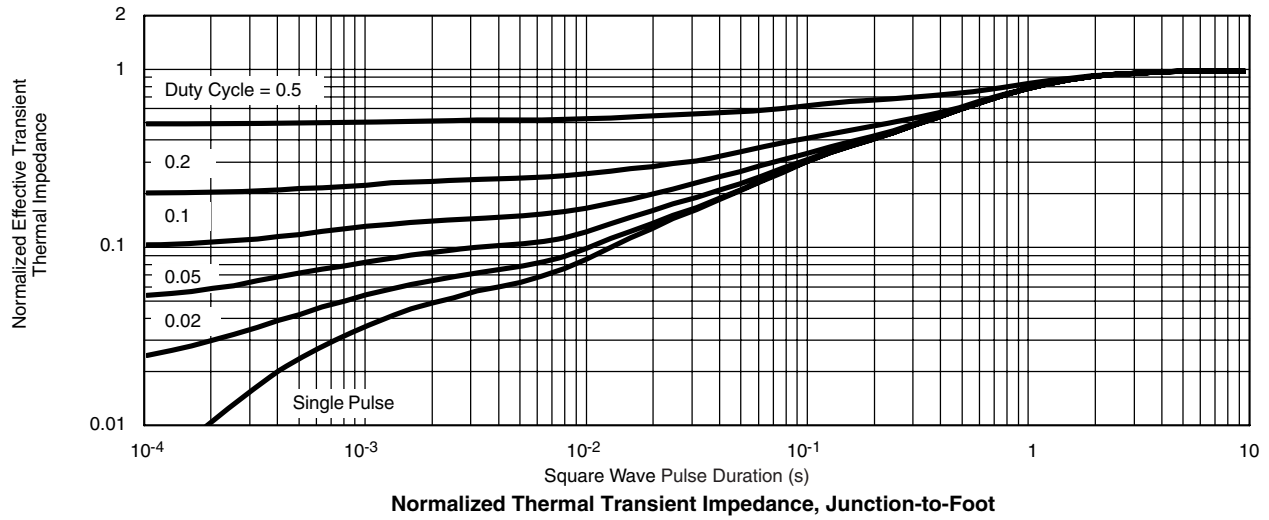


Notes:

1. Duty Cycle,  $D = \frac{t_1}{t_2}$
2. Per Unit Base =  $R_{thJA} = 126$   $^{\circ}C/W$
3.  $T_{JM} - T_A = P_{DM} Z_{thJA}(t)$
4. Surface Mounted

**Normalized Thermal Transient Impedance, Junction-to-Ambient**

**TYPICAL CHARACTERISTICS** 25 °C, unless otherwise noted



Vishay Siliconix maintains worldwide manufacturing capability. Products may be manufactured at one of several qualified locations. Reliability data for Silicon Technology and Package Reliability represent a composite of all qualified locations. For related documents such as package/tape drawings, part marking, and reliability data, see <http://www.vishay.com/ppg?73090>.



## Disclaimer

ALL PRODUCT, PRODUCT SPECIFICATIONS AND DATA ARE SUBJECT TO CHANGE WITHOUT NOTICE TO IMPROVE RELIABILITY, FUNCTION OR DESIGN OR OTHERWISE.

Vishay Intertechnology, Inc., its affiliates, agents, and employees, and all persons acting on its or their behalf (collectively, "Vishay"), disclaim any and all liability for any errors, inaccuracies or incompleteness contained in any datasheet or in any other disclosure relating to any product.

Vishay makes no warranty, representation or guarantee regarding the suitability of the products for any particular purpose or the continuing production of any product. To the maximum extent permitted by applicable law, Vishay disclaims (i) any and all liability arising out of the application or use of any product, (ii) any and all liability, including without limitation special, consequential or incidental damages, and (iii) any and all implied warranties, including warranties of fitness for particular purpose, non-infringement and merchantability.

Statements regarding the suitability of products for certain types of applications are based on Vishay's knowledge of typical requirements that are often placed on Vishay products in generic applications. Such statements are not binding statements about the suitability of products for a particular application. It is the customer's responsibility to validate that a particular product with the properties described in the product specification is suitable for use in a particular application. Parameters provided in datasheets and/or specifications may vary in different applications and performance may vary over time. All operating parameters, including typical parameters, must be validated for each customer application by the customer's technical experts. Product specifications do not expand or otherwise modify Vishay's terms and conditions of purchase, including but not limited to the warranty expressed therein.

Except as expressly indicated in writing, Vishay products are not designed for use in medical, life-saving, or life-sustaining applications or for any other application in which the failure of the Vishay product could result in personal injury or death. Customers using or selling Vishay products not expressly indicated for use in such applications do so at their own risk. Please contact authorized Vishay personnel to obtain written terms and conditions regarding products designed for such applications.

No license, express or implied, by estoppel or otherwise, to any intellectual property rights is granted by this document or by any conduct of Vishay. Product names and markings noted herein may be trademarks of their respective owners.

## Material Category Policy

**Vishay Intertechnology, Inc. hereby certifies that all its products that are identified as RoHS-Compliant fulfill the definitions and restrictions defined under Directive 2011/65/EU of The European Parliament and of the Council of June 8, 2011 on the restriction of the use of certain hazardous substances in electrical and electronic equipment (EEE) - recast, unless otherwise specified as non-compliant.**

**Please note that some Vishay documentation may still make reference to RoHS Directive 2002/95/EC. We confirm that all the products identified as being compliant to Directive 2002/95/EC conform to Directive 2011/65/EU.**

**Vishay Intertechnology, Inc. hereby certifies that all its products that are identified as Halogen-Free follow Halogen-Free requirements as per JEDEC JS709A standards. Please note that some Vishay documentation may still make reference to the IEC 61249-2-21 definition. We confirm that all the products identified as being compliant to IEC 61249-2-21 conform to JEDEC JS709A standards.**

Компания «Океан Электроники» предлагает заключение долгосрочных отношений при поставках импортных электронных компонентов на взаимовыгодных условиях!

Наши преимущества:

- Поставка оригинальных импортных электронных компонентов напрямую с производств Америки, Европы и Азии, а так же с крупнейших складов мира;
- Широкая линейка поставок активных и пассивных импортных электронных компонентов (более 30 млн. наименований);
- Поставка сложных, дефицитных, либо снятых с производства позиций;
- Оперативные сроки поставки под заказ (от 5 рабочих дней);
- Экспресс доставка в любую точку России;
- Помощь Конструкторского Отдела и консультации квалифицированных инженеров;
- Техническая поддержка проекта, помощь в подборе аналогов, поставка прототипов;
- Поставка электронных компонентов под контролем ВП;
- Система менеджмента качества сертифицирована по Международному стандарту ISO 9001;
- При необходимости вся продукция военного и аэрокосмического назначения проходит испытания и сертификацию в лаборатории (по согласованию с заказчиком);
- Поставка специализированных компонентов военного и аэрокосмического уровня качества (Xilinx, Altera, Analog Devices, Intersil, Interpoint, Microsemi, Actel, Aeroflex, Peregrine, VPT, Syfer, Eurofarad, Texas Instruments, MS Kennedy, Miteq, Cobham, E2V, MA-COM, Hittite, Mini-Circuits, General Dynamics и др.);

Компания «Океан Электроники» является официальным дистрибьютором и эксклюзивным представителем в России одного из крупнейших производителей разъемов военного и аэрокосмического назначения «JONHON», а так же официальным дистрибьютором и эксклюзивным представителем в России производителя высокотехнологичных и надежных решений для передачи СВЧ сигналов «FORSTAR».



## JONHON

«JONHON» (основан в 1970 г.)

Разъемы специального, военного и аэрокосмического назначения:

(Применяются в военной, авиационной, аэрокосмической, морской, железнодорожной, горно- и нефтедобывающей отраслях промышленности)

«FORSTAR» (основан в 1998 г.)

ВЧ соединители, коаксиальные кабели, кабельные сборки и микроволновые компоненты:

(Применяются в телекоммуникациях гражданского и специального назначения, в средствах связи, РЛС, а так же военной, авиационной и аэрокосмической отраслях промышленности).



Телефон: 8 (812) 309-75-97 (многоканальный)

Факс: 8 (812) 320-03-32

Электронная почта: [ocean@oceanchips.ru](mailto:ocean@oceanchips.ru)

Web: <http://oceanchips.ru/>

Адрес: 198099, г. Санкт-Петербург, ул. Калинина, д. 2, корп. 4, лит. А