

Altech Corp.®

Serving the Automation & Control Industry since 1984



Quality
Endorsed
Company



CD with Demo
Videos and Software
included



Universal Marking Systems

Universal Marking Systems

Universal Marking System Possibilities

Terminal Block Marking



Component Marking



Wire Marking



Cable Marking



Name Plates



Signs



Logo Plates



Legend Plates



Marking Systems

Scriber VS210

The VS210 base unit is a stand-alone plotting system with an integral keyboard and display screen. The marker fixture, plotter pen, and the memory cassette have to be inserted in the base unit to make it operational. The base unit comes in an aluminum carrying case and includes the memory cassette and the power supply. A manual is available in English and Spanish.

The VS210 can be used to produce labels of all types, with its fixture changeable in a matter of seconds.

The Vario VS210 makes labeling easy. The menu-driven program guides you quickly and easily through all the steps.

It can be used at any time and in any place. Easily transported in its special case, the battery-operated (battery pack sold separately) VS210 can be operated precisely where you need it. The spacious case provides enough room for the extensive accessories.

Plotter VP100

The VP100 base unit is an economy auxiliary plotter and has to be connected to a PC via a USB connection. It is a high speed plotting device and enables plotting of different markers in one setting. The marker fixture and the plotter pen have to be inserted manually before commencing the plotting operation. The base unit is controlled through a PC with the help of Vario Sign software (sold separately). Manual available in English and Spanish.

The special design of the VP 100 enables it to hold different markers from various manufacturers at the same time. It is also possible to write on relatively large markers with a maximum height 14 mm.

Plotter VP500

The VP500 base unit is an advanced auxiliary plotter and has to be connected to a PC via a parallel port or USB connection. It is a high speed plotting device and enables plotting of different markers in one setting. The base unit is primarily controlled through a PC with the help of Vario Sign software (sold separately). Manual available in English and Spanish.

The special design of the VP 500 enables it to hold different markers from various manufacturers at the same time. It is also possible to write on relatively

SCRIBER VS 210



- Professional marking of connectors, wires, cables and equipment, cable ties, shrink tubing, labels and signs of different sizes and materials, as well as customer-specific items.
- Size: 14.9 x 7.5 x 2.5 in. (380 x 190 x 63 mm)
- Weight: 4.0 lbs.

Ordering Information

BASE UNIT (includes power supply, memory cassette and carrying case)	34000000
STARTER KIT (includes cleaning unit, pen cleaners, felt pen, 0.25 mm plotter pen and ink cartridges)	34000001
FIXTURES (Contact Altech for available manufactures)	3490xxxx
ADDITIONAL MEMORY CASSETTE	35500001
BATTERY PACK	35500000



Fixtures & Memory Cassettes

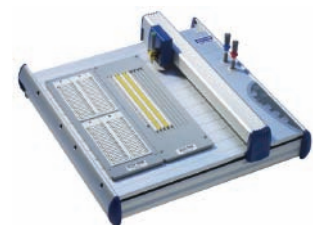


Battery Pack



Plotter Pen, Ink Cartridge

PLOTTER VP 100



- Professionally marking of connectors, wires, cables, equipment, cable ties, shrink tubing, labels and signs of different sizes and materials, as well as customer-specific items.
- Auto calibration
- Universal Power Supply 100-240V AC
- Control language HPGL
- Universal marking software (VarioSign) sold separately
- Marking area A4 (220 x 305 mm)
- Size: 17.3 x 17.3 x 4.0 in. (440 x 440 x 125 mm)
- Weight: 13.0 lbs.

Ordering Information

VP100 BASE UNIT (power supply and USB cables included)	34000034
STARTER KIT (includes cleaning unit, pen cleaners, felt pen, 0.25 mm plotter pen and ink cartridges)	34000001
VARIOSIGN SIGN SOFTWARE	34000022
FIXTURES	pages 5-6

PLOTTER VP 500



- Basic features of plotter VP 100 plus:
- Integrated and automated pen station. Holds 4 different pens at the same time, for fast and frequently changing applications.
- Built-in pen priming function
- Automatic recognition system for marking fixture / plates ensures faster and easier handling of frequently changing marking applications.
- Wide marking area A3 (440 x 610 mm)
- Size: 26 x 17.3 x 4.9 in. (660 x 440 x 125 mm)
- Weight: 18.0 lbs.

Ordering Information

VP500 BASE UNIT (power supply and USB cables included)	34000030
STARTER KIT (includes cleaning unit, pen cleaners, felt pen, 0.25 mm plotter pen and ink cartridges)	34000001
VARIOSIGN SIGN SOFTWARE	34000022
FIXTURES	pages 5-6

The New and Affordable **Altech**® Marking Tag Plotter Package

For use with
Altech & Connectwell
Marking Tags Only

CMPS 500 Plotter Package

- CMPS plotter
- Size: 17"x18"x4.9"
- Tag Sizes: MT2, MT3, MT4, MT5, MT6, MT8, MT9, MT10, MT12, MT15, MT20, MT25
- CMPS software with cable
- 2 fixtures for tags MT5-MT15 (MT9 sold separately)
- 1 fixture for tags MT2 and MT25
- 2 disposable pens

**Call
today!**

Remember Altech
also has the best priced
blocks on the market.

Altech Corp.®

908.806.9400 • altechcorp.com

Scriber VS210

The VS200 base unit is a stand-alone plotting system with an integral keyboard and display screen. The marker fixture, plotter pen, and the memory cassette have to be inserted in the base unit to make it operational. The base unit comes in an aluminum carrying case and includes the memory cassette and the power supply. A manual is available in English and Spanish.

The VS 200 can be used to produce labels of all types, with its fixture changeable in a matter of seconds.

The Vario VS 200 makes labeling easy. The menu-driven program guides you quickly and easily through all the steps.

It can be used at any time and in any place. Easily transported in its special case, the battery-operated (battery pack sold separately) VS 200 can be operated precisely where you need it. The spacious case provides enough room for the extensive accessories.

Plotter VP 500

The VP 500 base unit is an auxiliary plotter and has to be connected to a PC via a parallel port or USB connection. It is a high speed plotting device and enables plotting of different markers in one setting. The marker fixture and the plotter pen have to be inserted before commencing the plotting operation. The base unit is primarily controlled through a PC with the help of Vario Sign software. Manual available in English and Spanish.

The special design of the VP 500 enables it to hold different markers from various manufacturers at the same time. It is also possible to write on relatively large markers with a maximum height 14 mm.

Fixtures

Fixtures are required for alignment of markers with respect to the plotter pen. Different marker fixtures can be mounted on the plotter bed of the VP 500 at the same time thereby reducing set up times. Fixtures for different markers from various manufacturers like Altech, Allen Bradley, Connectwell, ContaClip, Entelec, Weidmuller, Phoenix Contact, PTR, Wieland, Wago, Murrplastik, Partex, SES Sterling, etc. are available. For more information on ordering fixtures please contact Altech.

SCRIBER VS 210



- Identifiers for connectors, wires, cables and equipment
- Cable ties, shrink tubing, labels and signs of different sizes and materials, as well as customer-specific items.
- Size: 14.9"x7.5"x1.77"
- Weight: 6.6 lbs.

Ordering Information

BASE UNIT (includes power supply, memory cassette and carrying case)	34000000
STARTER KIT (includes cleaning unit, pen cleaners, felt pen, 0.25 mm plotter pen) and ink cartridges	34000001
FIXTURES (Contact Altech for available manufactures)	3490xxxx
MEMORY CASSETTE	35500001
BATTERY PACK	35500000



Fixtures & Memory Cassette

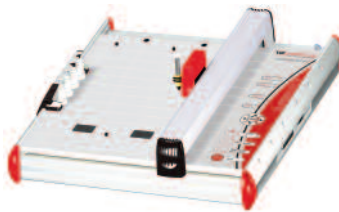


Battery Pack



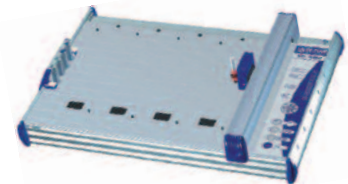
Plotter Pen, Ink Cartridge

CMPS 500 PLOTTER PACKAGE



- CMPS plotter
- Size: 17"x18"x4.9"
- Tag Sizes: MT2, MT3, MT4, MT5, MT6, MT8, MT9, MT10, MT12, MT15, MT20, MT25
- CMPS software with cable
- 2 fixtures for tags MT5-MT15 (MT9 sold separately)
- 1 fixture for tags MT2 and MT25
- 2 disposable pens

PLOTTER VP 500

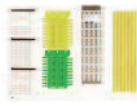


- Identifiers for connectors, wires, cables and equipment
- Cable ties, shrink tubing, labels and signs of different sizes and materials, as well as customer-specific items.
- Size: 26"x18"x4.9"

Ordering Information

CMPS 500 PLOTTER PACKAGE	34130008
VP 500 BASE UNIT (includes cable)	34000030
STARTER KIT (includes cleaning unit, pen cleaners, felt pen, 0.25 mm plotter pen) and ink cartridges	34000001
VARIO SIGN SOFTWARE	34000020
SERVICE KIT (includes 4 seal bonnets and 10 priming print cards)	34000026
FIXTURES (Contact Altech for available manufactures)	3490xxxx *

* See page 85.



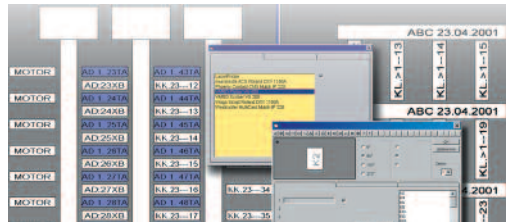
Fixtures



Plotter Pen, Ink Cartridge



Vario Sign



Marking Systems Accessories

Plotter Pens **IMPROVED**

These re-designed "tubular-nib" pens are suitable for Vario Scriber VS210, Vario Plotter VP100 + VP500 and all current labeling and identification systems with HP penholders. They are available in six tip widths identified by body color - 0.18 mm, 0.25 mm, 0.35 mm, 0.50 mm, 0.70 mm, and 1.00 mm; ink cartridge not supplied with pen. Special variants for other systems are available on request. Specially designed pre-filled felt-tip pens are available in a set of 4 colors (black, blue, red and green) and 2 sizes - 0.3 and 0.7 mm. A set of 5 black pens with 0.3mm tips is also available.



Ink **IMPROVED**

These are easy to insert "tubular-nib" pen cartridges containing special newly formulated black ink suitable for marking, identifying and labeling various plastics. It is fast drying, smudge-proof, fade resistant, and resistant to chemicals when used on suitable plastic materials. The new ink formula prevents the plotter pens from clogging. A clogged plotter pen will recover itself after a while by following the plotter pen handling and care instructions.



felt-tip pens,
2 sizes, 4 colors

Disposable Pens **IMPROVED**

The re-designed disposable pens use the same special ink as used in the ink cartridges. They deliver the same outstanding durability and print quality as the standard plotter pens with the convenience of a disposable pen. These pre-filled pens allow for fast, efficient and cost effective printing without refilling ink or cleaning. They are available in five tip widths identified by body color - 0.18, 0.25, 0.35, 0.50 and 0.70 mm.



Hand Pens

The hand pens use the same special ink, as used in cartridges, and delivers the same outstanding durability and print quality. They are used for additional identification and special labeling tasks and are available in four tip widths of 0.25mm, 0.35mm, 0.50 mm, and 0.70 mm. Ink sold separately, order part 35100006.



Cleaning Unit

It is an easy-to-use cleaning unit developed specially for EK Pens. The cleaning unit enables the pens to be rinsed thoroughly while preventing skin contact with cleaning fluid or ink. The cleaning unit can be used for up to ten cleaning cycles. The necessary precautions must be taken when disposing of cleaning fluid, the cleaning unit can be reused.



Pen Cleaner

This cleaning solution comes in easy to handle cartridges and is used in conjunction with the cleaning unit. A standard pack consists of two pen cleaner cartridges. Cleaning can be performed on standard refillable pens only. A 30 ml bottle is also available for refilling the cartridges.



Adapter

This adapter allows the user of Sharpie™ Ultra Fine felt tip pens instead of standard plotter pens.



Suction Ball

The "suction ball" is a helpful tool to bring a slightly clogged disposable or refillable plotter pen back to life. The suction can unclog a slightly clogged plotter pen from the vacuum created within the "ball". 5 replacement tips are included with each suction ball.



Service Kit for VP500

The service kit includes 4 plotter pen station inserts, 1 wrench, 10 single primer plates, instruction label for care of plotter pen station as well as 1 recovery / storage stand for a plotter pen.



Product	Width	Order No.
Re-designed! Now recovery and storage stand included.		
EK Plotter Pen (red)	0.18 mm	35001018
EK Plotter Pen (white)	0.25 mm	35001025
EK Plotter Pen (yellow)	0.35 mm	35001035
EK Plotter Pen (brown)	0.50 mm	35001050
EK Plotter Pen (blue)	0.70 mm	35001070
EK Plotter Pen (orange)	1.00 mm	35001100

New ink formula!

EK Ink Cartridge		
5 cartridges, Black, 1 ml. each		35100006
1 bottle, black, 30ml		35100001
EK Felt-tip Pen-Set	0.30 mm	35000005
EK Felt-tip Pen-Set	0.70 mm	35000010
EK Felt-tip Pens (5 black pens)	0.30 mm	35000002

EK Disposable Plotter Pen (red)	0.18 mm	35003018
EK Disposable Plotter Pen (white)	0.25 mm	35003025
EK Disposable Plotter Pen (yellow)	0.35 mm	35003035
EK Disposable Plotter Pen (brown)	0.50 mm	35003050
EK Disposable Plotter Pen (blue)	0.70 mm	35003070

Disposable Pens with different ink properties are available with red, blue, green and black ink for use on polyamid material only. Please consult Altech.

EK Hand Pen	0.25 mm	35002025
EK Hand Pen	0.35 mm	35002035
EK Hand Pen	0.50 mm	35002050
EK Hand Pen	0.70 mm	35002070

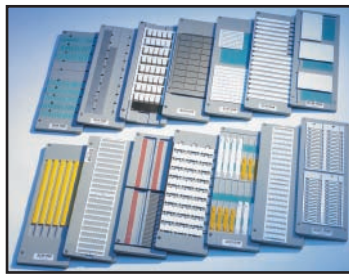
EK Cleaning Unit (empty)		35100009
--------------------------	--	----------

EK Pen Cleaner (2 pieces, 2x10 ml)		35100008
EK pen Cleaner (1 piece, 1x30 ml)		35100012
EK Cleaning Set (includes cleaning unit and pen cleaner)		35100010

Adapter for an Ultra Fine Sharpie™		35000501
------------------------------------	--	----------

Suction Ball		35100013
--------------	--	----------

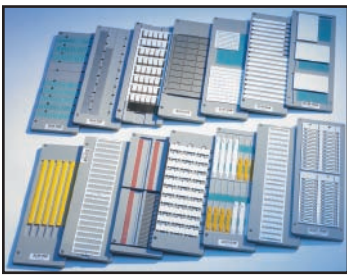
Service Kit		34090003
-------------	--	----------



Marking Systems VP100 and VP500 Fixtures

Description	Part No.	Description	Part No.
ABB / Entrelec		Dinkle	
ABB Entrelec universal - RC/RCT quarter size	34902063	Universal	34902145
ABB Entrelec RC 510A, 610A, 810A	34902114		
ABB Entrelec RC 510B, 610B, 810B	34902102	elmex	
ABB Entrelec RB-RBP 5-12	34902086	elmex card 10 by 10	34902061
ABB Entrelec BA 5-50	34902100	elmex KN 5,5; 6,5; 8	34902077
ABB Entrelec PIB	34902101	elmex card 10 by 10	34902061
ABB Entrelec RCCV	34902038	elmex KN 5,5; 6,5; 8	34902077
ABB Entrelec BS / ILS / ILS-H	34902106		
ABB Entrelec PAM -PAM 21515/21520,		Idento	
PAM 43015/43020	34902135	Idento EEB / LEB	34902106
Set of sticky pads (8 pcs) for RC/RCT	34910000		
Allen Bradley		Klemsan	
Allen Bradley Universal (old marker cards)	34902046	Plot-PLA	34902124
Allen Bradley 1492 Universal	34902141	Plot-PL E (Universal engraving and plot support plate half size, A4)	34902106
		Plot PL (Universal engraving and plot support plate full size A3)	34902107
Altech		Plot-PL DB	34902136
Altech MT 2n - MT 4n, MT 7.5, MT 20, MT 25	34902081	Plot-PL DB5	34902138
Altech MT 5 - MT 15	34902001	Plot-PL KE	34902137
Altech MT 9F	34902057		
Altech CA 509-G3	34902079	Legrand	
Altech Group marker G1, G2, G4	34902080	Wire Marker Memocab	34902119
		Terminal Blocks Legrand	34902120
C3controls		Terminal Blocks other manufacturer	34902121
c3controls WTB2-M 2	34902081	Cable markers Duplix	34902122
c3controls WTB2-M 5 - M 15	34902001	Self adhesive markers for equipment	34902123
c3controls WTB2-M 9	34902057		
Connectwell		Moeller	
Connectwell K2n - K4n, K7.5, K 20, K25	34902081	Moeller Typ XB, M22-XST	34902007
Connectwell K5 - K15	34902001		
Connectwell K9F	34902057	Morsettitalia	
Connectwell CA 509-G1/G2/G4	34902080	Morsettitalia 42090	34902113
Connectwell CA 509-G3	34902079	Morsettitalia 43192, 43196, 43541	34902112
Connectwell K2n - K4n, K7.5, K 20,			
K25 - full size support plate	34902103	murrplastik	
Connectwell K5 - K15 - full size support plate	34902104	murrplastik MP-400 (KS 4/xx)	34902008
		murrplastik MP-401 (KES, KLG, KMR, KPX, KS, KSA,KSF etc.)	34902009
Conexel		murrplastik BS, KSF 10x8, KSN	34902082
Dekafix 5	34902146	murrplastik KDE	34902111
		murrplastik KNDW	34902110
Conta Clip		murrplastik KPX ZS	34902099
Conta Clip BSTR / SB	34902002	murrplastik KS 5/10	34902083
Conta Clip SB 8/10	34902003	murrplastik KSE 0.75/10 ; KSE 1.5/10	34902084
Conta Clip AD 1/5 N SB 7.5	34902089	murrplastik KSE 1,5/18	34902085
Conta Clip ADQ	34902090	murrplastik KET	34902114
Conta Clip KBH-S4	34902091	murrplastik DM	34902106
Conta Clip AD 1/6N, AD 1/5, AD 1/6, AD 1/8	34902092		
Conta Clip AD 1/12 N	34902093		
Conta Clip MC BSTR / MC SB	34902108		
Conta Clip ZSchT 6 / SchT 9 / SchT 10	34902109		
Conta Clip KBH 3 stripe	34902011		
Conta Clip KBH 5 stripe	34902014		
Conta Clip KBH 10	34902016		
Conta Clip KBH-S stripe	34902024		
Conta Clip KBH-S single	34902023		
Conta Clip BST 8, ESO, GKE, Label	34902106		

Continued on next page.



Marking Systems VP100 and VP500 Fixtures

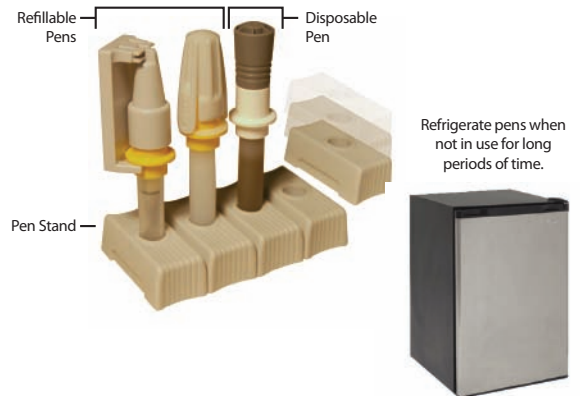
Description	Part No.	Description	Part No.
PARTEX		Wago	
Partex PA+02 / PAZ+02 strip	34902011	WAGO WMB 4/4,2/5	34902041
Partex PA+1 / PAZ+1 strip	34902014	WAGO WSB 4	34902074
Partex PA+2 single	34902016	WAGO WSB 5/5,2	34902075
Partex PC10 / PC20	34902019	WAGO WSB mini	34902076
Partex PC30 / PC40	34902020	WAGO Group marker carrier	34902078
Partex PC50 34902018	34902018	WAGO Marking Strip	34902087
Partex PEM	34902022	WAGO Marker tags	34902094
Partex PK-2 single	34902023	WAGO WTB	34902096
Partex PK2 / PVC strip	34902024	WAGO WCB	34902097
Partex PK2 Zerex strip	34902025	WAGO WMB inline	34902098
Partex PS	34902028	WAGO 210-345	34902106
Partex TX	34902029	Set of sticky pads (12 pcs) for Top Job (Marking Strip)	34910002
Partex TX 61	34902118	Weidmüller / Rockwell (Allen Bradley)	
Partex PFC	34902070	Weidmüller MultiCard Universal	34902045
Partex PN endless strip	34902026	Weidmüller MultiCard SF4-6	34902044
Partex PN (21) endless strip	34902139	Set of sticky pads (6 pcs) for Multicard Universal	34910001
Partex POH	34902027	Wieland	
Partex PFA20018TK9	34902106	Wieland Universal	34902043
Phoenix		Wieland BZ/WKF 1,5 04.243.2053.0	34902047
Phoenix Contact ZBM	34902039	Wieland BZ/WKF 1,5/10 Z4.243.2053.0	34902049
Phoenix Contact ZB	34902047	Wieland Steierform 6 x 15, 10 x 20	34902106
Phoenix Contact ZBFM	34902049	Woertz	
Phoenix Contact ZBF, ZBN	34900050	Woertz Universal	34902046
Phoenix Contact BNZ	34902051	Zoloda	
Phoenix Contact BN-ZB	34902052	CW 5/6	34902142
Phoenix Contact SS-ZB	34902053	ICAB 00-02	34902143
Phoenix Contact LBHZ	34902054	ICAB 03	34902144
Phoenix Contact PAB	34902055	SES	
Phoenix Contact GPE (quarter size plate)	34902071	SES PLIO M-012	34902037
Phoenix Contact GPE (half size plate, A4)	34902106	SES PLIO 14-1177	34902038
Phoenix UC-TM/WMC 3.1	34902129	SES 27 x 18	34902106
Phoenix UC-WMC-4.4	34902130	Siemens	
Phoenix UC-WMC7.5	34902131	Siemens S7-300 insert plates	34902105
Phoenix UC-TMF/UC-WMT	34902132	Sprecher + Schuh / Woertz	
Phoenix UC-SIE/UC1-TM	34902133	Universal	34902046
Phoenix UC-EMLP	34902134		

CUSTOM FIXTURES AND OTHER MANUFACTURERES ARE AVAILABLE

Contact Altech for Pricing (not in Price Book)

Handling and care of the EK-Team plotter pens for the universal EK-Team marking system.

For the state of the art universal marking system by EK-team, the manufacture is supplying a fast drying and etching ink that is required for marking plastic material within the control and automation industry. Due to these special properties of the ink, these plotter pens require much more care than a regular marking pen. Therefore EK-Team designed some helpful tools to keep your EK-team plotter pen in tip top shape.



Recovery and Storage Stand

This stand is designed to keep the plotter pen in an upright position, when not used with the marking system. The upright position allows the plotter pen to recover and to be properly stored. It is recommended to store plotter pens that will be idle for a few hours in a dry and cool location, preferably in the refrigerator. The recovery and storage stand accommodates easy storage and handling.

Call Altech for your free recovery and storage stand.

Part. No. 35000100

Suction Ball

The "suction ball" is a helpful tool to bring a slightly clogged disposable or refillable plotter pen back to life. The suction can unclog a slightly clogged plotter pen from the vacuum created within the "ball". This additional tool can be very helpful in addition to the already available cleaning kit (Cat. No. 35100010) for the refillable plotter pens. 5 replacement tips are included with each suction ball.



Part. No. 35100013

Pen Cleaning

CLEANING UNIT

It is an easy-to-use cleaning unit developed specially for refillable pens. The cleaning unit enables the pens to be rinsed thoroughly while preventing skin contact with cleaning fluid or ink. The cleaning unit can be used for up to ten cleaning cycles. The necessary precautions must be taken when disposing of cleaning fluid, the cleaning unit can be reused.

PEN UNIT

This cleaning solution comes in easy to handle cartridges and is used in conjunction with the cleaning unit. A standard pack consists of two pen cleaner cartridges. Cleaning can be performed on standard refillable pens only.

Cleaning Set Part. No. 35100010



VP 500 Plotter Pen Station Care

Pen Station Care Labels

EK-team designed new labels to show in a graphical way how to keep the plotter pen station well maintained. This label can be applied directly on to the plotter so the operator always gets a reminder about the care of the plotter pen station. Ask Altech about your free instruction label or request the service kit.

Service Kit Part. No. 34090003

Service Kit

EK-Team provides a service kit for the plotter units VP500. The service kit includes 4 plotter pen station inserts, 1 wrench, 10 single primer plates, instruction label for care of plotter pen station as well as 1 recovery / storage stand for a plotter pen.

The most common problem that is reported, is that the plotter pen tips over in the pen station when picked up by the pen carrier. This problem occurs when the pen station is not well maintained. Remaining dried ink will cause the plotter pen to stick to the pen station, instead of being released during the pick up from the pen carrier. Therefore the service kit contains 4 new pen station inserts that can be easily exchanged with the included wrench.

The included 10 redesigned primer plates will ensure a much faster and more effective way to prime the plotter pens. Therefore the new primer plates now have a bigger and much rougher surface.

The pen station care label as well as the pen recovery and storage stand are included for your convenience.



Service Kit Part. No. 34090003

Engraver VE500 Add-on Unit

The engraving unit was specifically **designed to be used with the VP100 and VP500 plotters**. Changing back and forth between the pen-plotter and the engraver is easy. The engraver is meant to engrave plastic signs on double sided material, pre-cut or blank sheets, legend plates, push button inlays, etc. Any kind of design software can be used, e.g. Corel Draw, to create custom logos, symbols as signs, that saves the creation as a HPL plot file (HPGL). The add-on unit consists of an engraving head, spindle, controller, vacuum for a clean engraving process; as well as all cable and necessary connection parts. The engraver unit is controlled by the VarioSign software for ease of use and design flexibility.

ENGRAVER VE500 ADD-ON UNIT



Ordering Information

VE500 ENGRAVER UNIT (VP100/500 REQUIRED)34000040

Vacuum Cleaner Bag

Replacement bags for the VE500 engraver's vacuum cleaner

Engraving Unit Accessories

VACUUM CLEANER BAG



Ordering Information

VACUUM CLEANER BAG, SET OF 535020000

Engraver Fixtures

The universal support plates are used to hold the engraving materials precisely in place. Five sizes are offered for holding plastic sheets, aluminum and brass plates, etc.. The surface material is self sticking to hold different materials in place during the engraving process.

ENGRAVER FIXTURES



Ordering Information

FULL SIZE, A3	34902107
HALF SIZE, A4	34902106
1/4 FIXTURE, 30 X 100mm, 9 FOLD	34902115
1/4 FIXTURE, 60 X 100mm, 4 FOLD	34902116
1/4 FIXTURE, 90 X 100mm, 3 FOLD	34902117

Marking Systems

Engraving Needles

These engraving needles are to be used with the VE500 engraver. They are available in different angles and tip widths depending on shape and material that is being engraved. Needles for metal engraving are available, the double tooth cutter with fishtail can dip into metal quite easily to speed the grinding performance.

* Recommended needles for stainless steel

Please note that for stainless steel, only a surface engraving is possible, not deep like in plastic material.

ENGRAVING NEEDLE



Ordering Information

Engraving Needles for:

Plastic Material		
Engraving needle 15° - 0.2 mm		35010003
Engraving needle 15° - 0.3 mm		35010002
Engraving needle 15° - 0.4 mm		35010001
Engraving needle 15° - 0.5 mm		35010000
Engraving needle 15° - 0.7 mm		35010004
Engraving needle 15° - 1.0 mm		35010005
Engraving needle 15° - set of 0.2; 0.3; 0.4; 0.5; 0.7; 1.0 mm		35010006
Engraving needle 36° - 0.2 mm		35010015
Engraving needle 36° - 0.3 mm		35010016
Engraving needle 36° - 0.4 mm		35010017
Engraving needle 36° - 0.5 mm		35010018
Engraving needle 36° - 0.7 mm		35010019
Engraving needle 36° - 1.0 mm		35010020
Engraving needle 60° - 0.2 mm		35010021
Engraving needle 60° - 0.3 mm		35010022
Engraving needle 60° - 0.4 mm		35010023
Engraving needle 60° - 0.5 mm		35010024
Engraving needle 60° - 0.7 mm		35010025
Engraving needle 60° - 1.0 mm		35010026
Engraving needle 90° - 0.2 mm		35010027
Engraving needle 90° - 0.3 mm		35010028
Engraving needle 90° - 0.4 mm		35010029
Engraving needle 90° - 0.5 mm		35010010
Engraving needle 90° - 0.7 mm		35010011
Engraving needle 90° - 1.0 mm		35010012

Metal	Engraving needle 35° - 0.2 mm*	35010013
	Engraving needle 35° - 0.4 mm*	35010014
	Double tooth cutter fishtail 0.5 mm	35010030
	Double tooth cutter fishtail 0.6 mm	35010031
	Double tooth cutter fishtail 0.8 mm	35010032
	Double tooth cutter fishtail 1.00 mm*	35010033
	Double tooth cutter fishtail 1.20 mm*	35010034
	Double tooth cutter fishtail 1.40 mm*	35010035
	Double tooth cutter fishtail 1.60 mm*	35010036
	Double tooth cutter fishtail 2.00 mm*	35010037
	Double tooth cutter fishtail 2.40 mm*	35010038
	Double tooth cutter fishtail 3.00 mm*	35010039

EK-Team Service Center

Phone/Fax: 908-806-7035

- Warranty
- Service
- Repair
- Retrofitting
- VS200/210
- VP100
- VP500
- VE500
- OEM branded similar models





Slot for DVD

EK-TEAM
Elektronische Kommunikationstechnik
Mühlweg 109 44
A-1000, 2210

altechcorp.com

Altech Corp.®

Quality
Endorsed
Company



ISO 9001:2000
CERTIFICATE



Altech Search

Google™ Custom Search

Home

Stock Check

Distributors

Information

News

Contact Us

Rep / Dist Login

Altech Mexico

PRODUCTS

Circuit Protection / Control >

Connectors >

Enclosures >

European Spare Parts >

Foot Switches >

Interface Modules >

Power Supplies >

Push Buttons & Pilot Lights >

Relays & Contactors >

Sensors >

Terminal Blocks >

Wire & Cable Management >



Busbar
and Power
Distribution



Circuit
Protection
Devices



Contactors
and Overload
Relays



DIN
Enclosures



Din Rail
Terminal
Blocks



Distribution
Blocks



Eurostrips



European
Fuses



Ferrules



Foot
Switches



Inductive
Proximity
Sensors



Industrial
Enclosures



Interface
Modules



Liquid Tight
Strain Reliefs/
Corrugated
Tubes



Marking
Systems



Motor
Disconnect
Switches



Pin & Sleeve
Devices/
Receptacles



Power
Semiconductors



Panel Mount
Terminal
Blocks



Power
Supplies



Printed Circuit
Board Terminal
Blocks



22 & 30 mm
Push Buttons



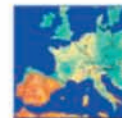
Safety
Relays



Slimline
Relays



Wire Duct



European
Spare Parts



DIN
Rail



Custom
Assembly

Altech Corporation
35 Royal Road
Flemington, NJ 08822-6000
Phone (908) 806-9400
Fax (908) 806-9490
www.altechcorp.com

Altech Corp.® 280-012010-3M

Компания «Океан Электроники» предлагает заключение долгосрочных отношений при поставках импортных электронных компонентов на взаимовыгодных условиях!

Наши преимущества:

- Поставка оригинальных импортных электронных компонентов напрямую с производств Америки, Европы и Азии, а так же с крупнейших складов мира;
- Широкая линейка поставок активных и пассивных импортных электронных компонентов (более 30 млн. наименований);
- Поставка сложных, дефицитных, либо снятых с производства позиций;
- Оперативные сроки поставки под заказ (от 5 рабочих дней);
- Экспресс доставка в любую точку России;
- Помощь Конструкторского Отдела и консультации квалифицированных инженеров;
- Техническая поддержка проекта, помощь в подборе аналогов, поставка прототипов;
- Поставка электронных компонентов под контролем ВП;
- Система менеджмента качества сертифицирована по Международному стандарту ISO 9001;
- При необходимости вся продукция военного и аэрокосмического назначения проходит испытания и сертификацию в лаборатории (по согласованию с заказчиком);
- Поставка специализированных компонентов военного и аэрокосмического уровня качества (Xilinx, Altera, Analog Devices, Intersil, Interpoint, Microsemi, Actel, Aeroflex, Peregrine, VPT, Syfer, Eurofarad, Texas Instruments, MS Kennedy, Miteq, Cobham, E2V, MA-COM, Hittite, Mini-Circuits, General Dynamics и др.);

Компания «Океан Электроники» является официальным дистрибьютором и эксклюзивным представителем в России одного из крупнейших производителей разъемов военного и аэрокосмического назначения «JONHON», а так же официальным дистрибьютором и эксклюзивным представителем в России производителя высокотехнологичных и надежных решений для передачи СВЧ сигналов «FORSTAR».



JONHON

«JONHON» (основан в 1970 г.)

Разъемы специального, военного и аэрокосмического назначения:

(Применяются в военной, авиационной, аэрокосмической, морской, железнодорожной, горно- и нефтедобывающей отраслях промышленности)

«FORSTAR» (основан в 1998 г.)

ВЧ соединители, коаксиальные кабели, кабельные сборки и микроволновые компоненты:

(Применяются в телекоммуникациях гражданского и специального назначения, в средствах связи, РЛС, а так же военной, авиационной и аэрокосмической отраслях промышленности).



Телефон: 8 (812) 309-75-97 (многоканальный)

Факс: 8 (812) 320-03-32

Электронная почта: ocean@oceanchips.ru

Web: <http://oceanchips.ru/>

Адрес: 198099, г. Санкт-Петербург, ул. Калинина, д. 2, корп. 4, лит. А