

Altech Corp.®

Serving the Automation & Control Industry since 1984



Quality
Endorsed
Company



CD with Demo
Videos and Software
included

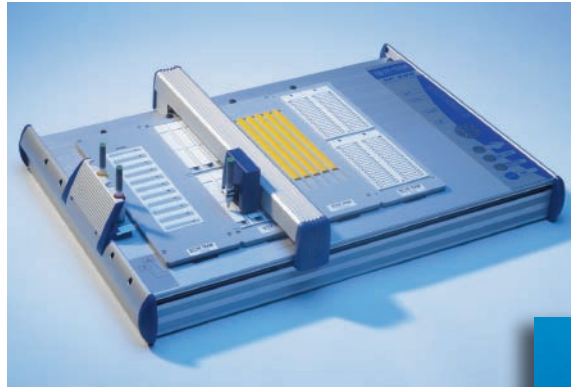


Universal Marking Systems

Universal Marking Systems

Universal Marking System Possibilities

Terminal Block Marking



Component Marking



Wire Marking



Cable Marking



Name Plates



Signs



Legend Plates



Logo Plates



Marking Systems

Scriber VS210

The VS210 base unit is a stand-alone plotting system with an integral keyboard and display screen. The marker fixture, plotter pen, and the memory cassette have to be inserted in the base unit to make it operational. The base unit comes in an aluminum carrying case and includes the memory cassette and the power supply. A manual is available in English and Spanish.

The VS210 can be used to produce labels of all types, with its fixture changeable in a matter of seconds.

The Vario VS210 makes labeling easy. The menu-driven program guides you quickly and easily through all the steps.

It can be used at any time and in any place. Easily transported in its special case, the battery-operated (battery pack sold separately) VS210 can be operated precisely where you need it. The spacious case provides enough room for the extensive accessories.

Plotter VP100

The VP100 base unit is an economy auxiliary plotter and has to be connected to a PC via a USB connection. It is a high speed plotting device and enables plotting of different markers in one setting. The marker fixture and the plotter pen have to be inserted manually before commencing the plotting operation. The base unit is controlled through a PC with the help of Vario Sign software (sold separately). Manual available in English and Spanish.

The special design of the VP 100 enables it to hold different markers from various manufacturers at the same time. It is also possible to write on relatively large markers with a maximum height 14 mm.

Plotter VP500

The VP500 base unit is an advanced auxiliary plotter and has to be connected to a PC via a parallel port or USB connection. It is a high speed plotting device and enables plotting of different markers in one setting. The base unit is primarily controlled through a PC with the help of Vario Sign software (sold separately). Manual available in English and Spanish.

The special design of the VP 500 enables it to hold different markers from various manufacturers at the same time. It is also possible to write on relatively

SCRIBER VS 210



- Professional marking of connectors, wires, cables and equipment, cable ties, shrink tubing, labels and signs of different sizes and materials, as well as customer-specific items.
- Size: 14.9 x 7.5 x 2.5 in. (380 x 190 x 63 mm)
- Weight: 4.0 lbs.

Ordering Information

| | |
|--|----------|
| BASE UNIT (includes power supply, memory cassette and carrying case) | 34000000 |
| STARTER KIT (includes cleaning unit, pen cleaners, felt pen, 0.25 mm plotter pen and ink cartridges) | 34000001 |
| FIXTURES (Contact Altech for available manufactures) | 3490xxxx |
| ADDITIONAL MEMORY CASSETTE | 35500001 |
| BATTERY PACK | 35500000 |



Fixtures & Memory Cassettes



Battery Pack



Plotter Pen, Ink Cartridge

PLOTTER VP 100



- Professionally marking of connectors, wires, cables, equipment, cable ties, shrink tubing, labels and signs of different sizes and materials, as well as customer-specific items.
- Auto calibration
- Universal Power Supply 100-240V AC
- Control language HPGL
- Universal marking software (VarioSign) sold separately
- Marking area A4 (220 x 305 mm)
- Size: 17.3 x 17.3 x 4.0 in. (440 x 440 x 125 mm)
- Weight: 13.0 lbs.

Ordering Information

| | |
|--|-----------|
| VP100 BASE UNIT (power supply and USB cables included) | 34000034 |
| STARTER KIT (includes cleaning unit, pen cleaners, felt pen, 0.25 mm plotter pen and ink cartridges) | 34000001 |
| VARIOSIGN SIGN SOFTWARE | 34000022 |
| FIXTURES | pages 5-6 |

PLOTTER VP 500



- Basic features of plotter VP 100 plus:
- Integrated and automated pen station. Holds 4 different pens at the same time, for fast and frequently changing applications.
- Built-in pen priming function
- Automatic recognition system for marking fixture / plates ensures faster and easier handling of frequently changing marking applications.
- Wide marking area A3 (440 x 610 mm)
- Size: 26 x 17.3 x 4.9 in. (660 x 440 x 125 mm)
- Weight: 18.0 lbs.

Ordering Information

| | |
|--|-----------|
| VP500 BASE UNIT (power supply and USB cables included) | 34000030 |
| STARTER KIT (includes cleaning unit, pen cleaners, felt pen, 0.25 mm plotter pen and ink cartridges) | 34000001 |
| VARIOSIGN SIGN SOFTWARE | 34000022 |
| FIXTURES | pages 5-6 |

The New and Affordable **Altech**® Marking Tag Plotter Package

For use with
Altech & Connectwell
Marking Tags Only

CMPS 500 Plotter Package

- CMPS plotter
- Size: 17"x18"x4.9"
- Tag Sizes: MT2, MT3, MT4, MT5, MT6, MT8, MT9, MT10, MT12, MT15, MT20, MT25
- CMPS software with cable
- 2 fixtures for tags MT5-MT15 (MT9 sold separately)
- 1 fixture for tags MT2 and MT25
- 2 disposable pens

**Call
today!**

Remember Altech
also has the best priced
blocks on the market.

Altech Corp.®

908.806.9400 • altechcorp.com

Scriber VS210

The VS200 base unit is a stand-alone plotting system with an integral keyboard and display screen. The marker fixture, plotter pen, and the memory cassette have to be inserted in the base unit to make it operational. The base unit comes in an aluminum carrying case and includes the memory cassette and the power supply. A manual is available in English and Spanish.

The VS 200 can be used to produce labels of all types, with its fixture changeable in a matter of seconds.

The Vario VS 200 makes labeling easy. The menu-driven program guides you quickly and easily through all the steps.

It can be used at any time and in any place. Easily transported in its special case, the battery-operated (battery pack sold separately) VS 200 can be operated precisely where you need it. The spacious case provides enough room for the extensive accessories.

Plotter VP 500

The VP 500 base unit is an auxiliary plotter and has to be connected to a PC via a parallel port or USB connection. It is a high speed plotting device and enables plotting of different markers in one setting. The marker fixture and the plotter pen have to be inserted before commencing the plotting operation. The base unit is primarily controlled through a PC with the help of Vario Sign software. Manual available in English and Spanish.

The special design of the VP 500 enables it to hold different markers from various manufacturers at the same time. It is also possible to write on relatively large markers with a maximum height 14 mm.

Fixtures

Fixtures are required for alignment of markers with respect to the plotter pen. Different marker fixtures can be mounted on the plotter bed of the VP 500 at the same time thereby reducing set up times. Fixtures for different markers from various manufacturers like Altech, Allen Bradley, Connectwell, ContaClip, Entelec, Weidmuller, Phoenix Contact, PTR, Wieland, Wago, Murrplastik, Partex, SES Sterling, etc. are available. For more information on ordering fixtures please contact Altech.

SCRIBER VS 210



- Identifiers for connectors, wires, cables and equipment
- Cable ties, shrink tubing, labels and signs of different sizes and materials, as well as customer-specific items.
- Size: 14.9"x7.5"x1.77"
- Weight: 6.6 lbs.

Ordering Information

| | |
|---|----------|
| BASE UNIT (includes power supply, memory cassette and carrying case) | 34000000 |
| STARTER KIT (includes cleaning unit, pen cleaners, felt pen, 0.25 mm plotter pen) and ink cartridges | 34000001 |
| FIXTURES (Contact Altech for available manufactures) | 3490xxxx |
| MEMORY CASSETTE | 35500001 |
| BATTERY PACK | 35500000 |



Fixtures & Memory Cassette

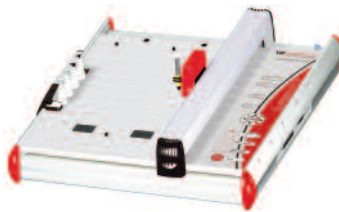


Battery Pack



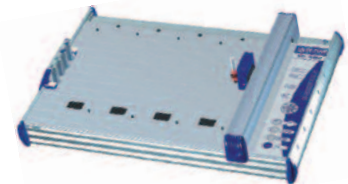
Plotter Pen, Ink Cartridge

CMPS 500 PLOTTER PACKAGE



- CMPS plotter
- Size: 17"x18"x4.9"
- Tag Sizes: MT2, MT3, MT4, MT5, MT6, MT8, MT9, MT10, MT12, MT15, MT20, MT25
- CMPS software with cable
- 2 fixtures for tags MT5-MT15 (MT9 sold separately)
- 1 fixture for tags MT2 and MT25
- 2 disposable pens

PLOTTER VP 500

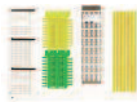


- Identifiers for connectors, wires, cables and equipment
- Cable ties, shrink tubing, labels and signs of different sizes and materials, as well as customer-specific items.
- Size: 26"x18"x4.9"

Ordering Information

| | |
|---|------------|
| CMPS 500 PLOTTER PACKAGE | 34130008 |
| VP 500 BASE UNIT (includes cable) | 34000030 |
| STARTER KIT (includes cleaning unit, pen cleaners, felt pen, 0.25 mm plotter pen) and ink cartridges | 34000001 |
| VARIO SIGN SOFTWARE | 34000020 |
| SERVICE KIT (includes 4 seal bonnets and 10 priming print cards) | 34000026 |
| FIXTURES (Contact Altech for available manufactures) | 3490xxxx * |

* See page 85.

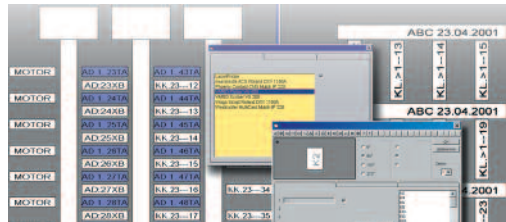


Fixtures



Plotter Pen, Ink Cartridge

Vario Sign



Marking Systems Accessories

Plotter Pens **IMPROVED**

These re-designed "tubular-nib" pens are suitable for Vario Scriber VS210, Vario Plotter VP100 + VP500 and all current labeling and identification systems with HP penholders. They are available in six tip widths identified by body color - 0.18 mm, 0.25 mm, 0.35 mm, 0.50 mm, 0.70 mm, and 1.00 mm; ink cartridge not supplied with pen. Special variants for other systems are available on request. Specially designed pre-filled felt-tip pens are available in a set of 4 colors (black, blue, red and green) and 2 sizes - 0.3 and 0.7 mm. A set of 5 black pens with 0.3mm tips is also available.



Ink **IMPROVED**

These are easy to insert "tubular-nib" pen cartridges containing special newly formulated black ink suitable for marking, identifying and labeling various plastics. It is fast drying, smudge-proof, fade resistant, and resistant to chemicals when used on suitable plastic materials. The new ink formula prevents the plotter pens from clogging. A clogged plotter pen will recover itself after a while by following the plotter pen handling and care instructions.



felt-tip pens,
2 sizes, 4 colors

Disposable Pens **IMPROVED**

The re-designed disposable pens use the same special ink as used in the ink cartridges. They deliver the same outstanding durability and print quality as the standard plotter pens with the convenience of a disposable pen. These pre-filled pens allow for fast, efficient and cost effective printing without refilling ink or cleaning. They are available in five tip widths identified by body color - 0.18, 0.25, 0.35, 0.50 and 0.70 mm.



Hand Pens

The hand pens use the same special ink, as used in cartridges, and delivers the same outstanding durability and print quality. They are used for additional identification and special labeling tasks and are available in four tip widths of 0.25mm, 0.35mm, 0.50 mm, and 0.70 mm. Ink sold separately, order part 35100006.



Cleaning Unit

It is an easy-to-use cleaning unit developed specially for EK Pens. The cleaning unit enables the pens to be rinsed thoroughly while preventing skin contact with cleaning fluid or ink. The cleaning unit can be used for up to ten cleaning cycles. The necessary precautions must be taken when disposing of cleaning fluid, the cleaning unit can be reused.



Pen Cleaner

This cleaning solution comes in easy to handle cartridges and is used in conjunction with the cleaning unit. A standard pack consists of two pen cleaner cartridges. Cleaning can be performed on standard refillable pens only. A 30 ml bottle is also available for refilling the cartridges.



Adapter

This adapter allows the user of Sharpie™ Ultra Fine felt tip pens instead of standard plotter pens.



Suction Ball

The "suction ball" is a helpful tool to bring a slightly clogged disposable or refillable plotter pen back to life. The suction can unclog a slightly clogged plotter pen from the vacuum created within the "ball". 5 replacement tips are included with each suction ball.



Service Kit for VP500

The service kit includes 4 plotter pen station inserts, 1 wrench, 10 single primer plates, instruction label for care of plotter pen station as well as 1 recovery / storage stand for a plotter pen.



| Product | Width | Order No. |
|--|---------|-----------|
| Re-designed! Now recovery and storage stand included. | | |
| EK Plotter Pen (red) | 0.18 mm | 35001018 |
| EK Plotter Pen (white) | 0.25 mm | 35001025 |
| EK Plotter Pen (yellow) | 0.35 mm | 35001035 |
| EK Plotter Pen (brown) | 0.50 mm | 35001050 |
| EK Plotter Pen (blue) | 0.70 mm | 35001070 |
| EK Plotter Pen (orange) | 1.00 mm | 35001100 |

New ink formula!

| | | |
|---------------------------------|---------|----------|
| EK Ink Cartridge | | |
| 5 cartridges, Black, 1 ml. each | | 35100006 |
| 1 bottle, black, 30ml | | 35100001 |
| EK Felt-tip Pen-Set | 0.30 mm | 35000005 |
| EK Felt-tip Pen-Set | 0.70 mm | 35000010 |
| EK Felt-tip Pens (5 black pens) | 0.30 mm | 35000002 |

| | | |
|------------------------------------|---------|----------|
| EK Disposable Plotter Pen (red) | 0.18 mm | 35003018 |
| EK Disposable Plotter Pen (white) | 0.25 mm | 35003025 |
| EK Disposable Plotter Pen (yellow) | 0.35 mm | 35003035 |
| EK Disposable Plotter Pen (brown) | 0.50 mm | 35003050 |
| EK Disposable Plotter Pen (blue) | 0.70 mm | 35003070 |

Disposable Pens with different ink properties are available with red, blue, green and black ink for use on polyamid material only. Please consult Altech.

| | | |
|-------------|---------|----------|
| EK Hand Pen | 0.25 mm | 35002025 |
| EK Hand Pen | 0.35 mm | 35002035 |
| EK Hand Pen | 0.50 mm | 35002050 |
| EK Hand Pen | 0.70 mm | 35002070 |

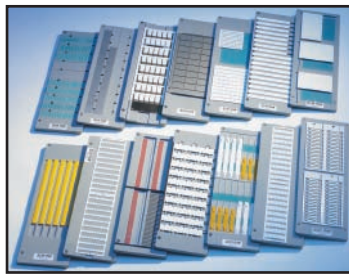
| | | |
|--------------------------|--|----------|
| EK Cleaning Unit (empty) | | 35100009 |
|--------------------------|--|----------|

| | | |
|---|--|----------|
| EK Pen Cleaner (2 pieces, 2x10 ml) | | 35100008 |
| EK pen Cleaner (1 piece, 1x30 ml) | | 35100012 |
| EK Cleaning Set (includes cleaning unit and pen cleaner) | | 35100010 |

| | | |
|------------------------------------|--|----------|
| Adapter for an Ultra Fine Sharpie™ | | 35000501 |
|------------------------------------|--|----------|

| | | |
|--------------|--|----------|
| Suction Ball | | 35100013 |
|--------------|--|----------|

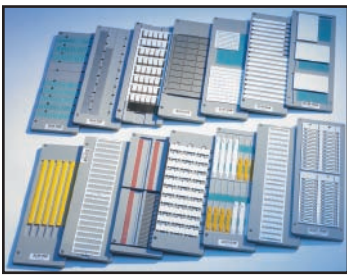
| | | |
|-------------|--|----------|
| Service Kit | | 34090003 |
|-------------|--|----------|



Marking Systems VP100 and VP500 Fixtures

| Description | Part No. | Description | Part No. |
|---|----------|---|----------|
| ABB / Entrelec | | Dinkle | |
| ABB Entrelec universal - RC/RCT quarter size | 34902063 | Universal | 34902145 |
| ABB Entrelec RC 510A, 610A, 810A | 34902114 | | |
| ABB Entrelec RC 510B, 610B, 810B | 34902102 | elmex | |
| ABB Entrelec RB-RBP 5-12 | 34902086 | elmex card 10 by 10 | 34902061 |
| ABB Entrelec BA 5-50 | 34902100 | elmex KN 5,5; 6,5; 8 | 34902077 |
| ABB Entrelec PIB | 34902101 | elmex card 10 by 10 | 34902061 |
| ABB Entrelec RCCV | 34902038 | elmex KN 5,5; 6,5; 8 | 34902077 |
| ABB Entrelec BS / ILS / ILS-H | 34902106 | | |
| ABB Entrelec PAM -PAM 21515/21520, PAM 43015/43020 | 34902135 | Idento | |
| Set of sticky pads (8 pcs) for RC/RCT | 34910000 | Idento EEB / LEB | 34902106 |
| Allen Bradley | | Klemsan | |
| Allen Bradley Universal (old marker cards) | 34902046 | Plot-PLA | 34902124 |
| Allen Bradley 1492 Universal | 34902141 | Plot-PL E (Universal engraving and plot support plate half size, A4) | 34902106 |
| Altech | | Plot PL (Universal engraving and plot support plate full size A3) | 34902107 |
| Altech MT 2n - MT 4n, MT 7.5, MT 20, MT 25 | 34902081 | Plot-PL DB | 34902136 |
| Altech MT 5 - MT 15 | 34902001 | Plot-PL DB5 | 34902138 |
| Altech MT 9F | 34902057 | Plot-PL KE | 34902137 |
| Altech CA 509-G3 | 34902079 | | |
| Altech Group marker G1, G2, G4 | 34902080 | Legrand | |
| C3controls | | Wire Marker Memocab | 34902119 |
| c3controls WTB2-M 2 | 34902081 | Terminal Blocks Legrand | 34902120 |
| c3controls WTB2-M 5 - M 15 | 34902001 | Terminal Blocks other manufacturer | 34902121 |
| c3controls WTB2-M 9 | 34902057 | Cable markers Duplix | 34902122 |
| | | Self adhesive markers for equipment | 34902123 |
| Connectwell | | Moeller | |
| Connectwell K2n - K4n, K7.5, K 20, K25 | 34902081 | Moeller Typ XB, M22-XST | 34902007 |
| Connectwell K5 - K15 | 34902001 | | |
| Connectwell K9F | 34902057 | Morsettitalia | |
| Connectwell CA 509-G1/G2/G4 | 34902080 | Morsettitalia 42090 | 34902113 |
| Connectwell CA 509-G3 | 34902079 | Morsettitalia 43192, 43196, 43541 | 34902112 |
| Connectwell K2n - K4n, K7.5, K 20, K25 - full size support plate | 34902103 | | |
| Connectwell K5 - K15 - full size support plate | 34902104 | murrplastik | |
| Conexel | | murrplastik MP-400 (KS 4/xx) | 34902008 |
| Dekafix 5 | 34902146 | murrplastik MP-401 (KES, KLG, KMR, KPX, KS, KSA,KSF etc.) | 34902009 |
| Conta Clip | | murrplastik BS, KSF 10x8, KSN | 34902082 |
| Conta Clip BSTR / SB | 34902002 | murrplastik KDE | 34902111 |
| Conta Clip SB 8/10 | 34902003 | murrplastik KNDW | 34902110 |
| Conta Clip AD 1/5 N SB 7.5 | 34902089 | murrplastik KPX ZS | 34902099 |
| Conta Clip ADQ | 34902090 | murrplastik KS 5/10 | 34902083 |
| Conta Clip KBH-S4 | 34902091 | murrplastik KSE 0.75/10 ; KSE 1.5/10 | 34902084 |
| Conta Clip AD 1/6N, AD 1/5, AD 1/6, AD 1/8 | 34902092 | murrplastik KSE 1,5/18 | 34902085 |
| Conta Clip AD 1/12 N | 34902093 | murrplastik KET | 34902114 |
| Conta Clip MC BSTR / MC SB | 34902108 | murrplastik DM | 34902106 |
| Conta Clip ZSchT 6 / SchT 9 / SchT 10 | 34902109 | | |
| Conta Clip KBH 3 stripe | 34902011 | | |
| Conta Clip KBH 5 stripe | 34902014 | | |
| Conta Clip KBH 10 | 34902016 | | |
| Conta Clip KBH-S stripe | 34902024 | | |
| Conta Clip KBH-S single | 34902023 | | |
| Conta Clip BST 8, ESO, GKE, Label | 34902106 | | |

Continued on next page.



Marking Systems VP100 and VP500 Fixtures

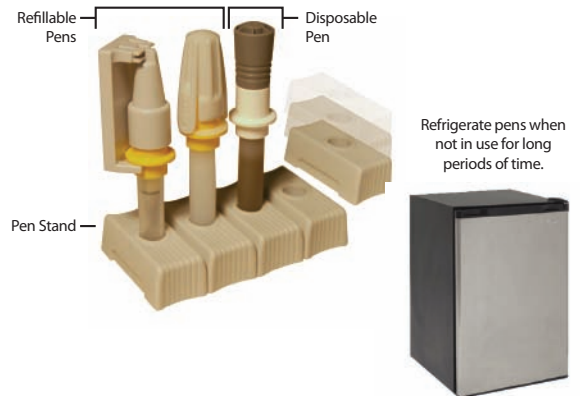
| Description | Part No. | Description | Part No. |
|---|----------|---|----------|
| PARTEX | | Wago | |
| Partex PA+02 / PAZ+02 strip | 34902011 | WAGO WMB 4/4,2/5 | 34902041 |
| Partex PA+1 / PAZ+1 strip | 34902014 | WAGO WSB 4 | 34902074 |
| Partex PA+2 single | 34902016 | WAGO WSB 5/5,2 | 34902075 |
| Partex PC10 / PC20 | 34902019 | WAGO WSB mini | 34902076 |
| Partex PC30 / PC40 | 34902020 | WAGO Group marker carrier | 34902078 |
| Partex PC50 34902018 | 34902018 | WAGO Marking Strip | 34902087 |
| Partex PEM | 34902022 | WAGO Marker tags | 34902094 |
| Partex PK-2 single | 34902023 | WAGO WTB | 34902096 |
| Partex PK2 / PVC strip | 34902024 | WAGO WCB | 34902097 |
| Partex PK2 Zerex strip | 34902025 | WAGO WMB inline | 34902098 |
| Partex PS | 34902028 | WAGO 210-345 | 34902106 |
| Partex TX | 34902029 | Set of sticky pads (12 pcs) for Top Job (Marking Strip) | 34910002 |
| Partex TX 61 | 34902118 | | |
| Partex PFC | 34902070 | Weidmüller / Rockwell (Allen Bradley) | |
| Partex PN endless strip | 34902026 | Weidmüller MultiCard Universal | 34902045 |
| Partex PN (21) endless strip | 34902139 | Weidmüller MultiCard SF4-6 | 34902044 |
| Partex POH | 34902027 | Set of sticky pads (6 pcs) for Multicard Universal | 34910001 |
| Partex PFA20018TK9 | 34902106 | | |
| Phoenix | | Wieland | |
| Phoenix Contact ZBM | 34902039 | Wieland Universal | 34902043 |
| Phoenix Contact ZB | 34902047 | Wieland BZ/WKF 1,5 04.243.2053.0 | 34902047 |
| Phoenix Contact ZBFM | 34902049 | Wieland BZ/WKF 1,5/10 Z4.243.2053.0 | 34902049 |
| Phoenix Contact ZBF, ZBN | 34900050 | Wieland Steierform 6 x 15, 10 x 20 | 34902106 |
| Phoenix Contact BNZ | 34902051 | | |
| Phoenix Contact BN-ZB | 34902052 | Woertz | |
| Phoenix Contact SS-ZB | 34902053 | Woertz Universal | 34902046 |
| Phoenix Contact LBHZ | 34902054 | | |
| Phoenix Contact PAB | 34902055 | Zoloda | |
| Phoenix Contact GPE (quarter size plate) | 34902071 | CW 5/6 | 34902142 |
| Phoenix Contact GPE (half size plate, A4) | 34902106 | ICAB 00-02 | 34902143 |
| Phoenix UC-TM/WMC 3.1 | 34902129 | ICAB 03 | 34902144 |
| Phoenix UC-WMC-4.4 | 34902130 | | |
| Phoenix UC-WMC7.5 | 34902131 | | |
| Phoenix UC-TMF/UC-WMT | 34902132 | | |
| Phoenix UC-SIE/UC1-TM | 34902133 | | |
| Phoenix UC-EMLP | 34902134 | | |
| SES | | | |
| SES PLIO M-012 | 34902037 | | |
| SES PLIO 14-1177 | 34902038 | | |
| SES 27 x 18 | 34902106 | | |
| Siemens | | | |
| Siemens S7-300 insert plates | 34902105 | | |
| Sprecher + Schuh / Woertz | | | |
| Universal | 34902046 | | |

CUSTOM FIXTURES AND OTHER MANUFACTURERES ARE AVAILABLE

Contact Altech for Pricing (not in Price Book)

Handling and care of the EK-Team plotter pens for the universal EK-Team marking system.

For the state of the art universal marking system by EK-team, the manufacture is supplying a fast drying and etching ink that is required for marking plastic material within the control and automation industry. Due to these special properties of the ink, these plotter pens require much more care than a regular marking pen. Therefore EK-Team designed some helpful tools to keep your EK-team plotter pen in tip top shape.



Recovery and Storage Stand

This stand is designed to keep the plotter pen in an upright position, when not used with the marking system. The upright position allows the plotter pen to recover and to be properly stored. It is recommended to store plotter pens that will be idle for a few hours in a dry and cool location, preferably in the refrigerator. The recovery and storage stand accommodates easy storage and handling.

Call Altech for your free recovery and storage stand.

Part. No. 35000100

Suction Ball

The "suction ball" is a helpful tool to bring a slightly clogged disposable or refillable plotter pen back to life. The suction can unclog a slightly clogged plotter pen from the vacuum created within the "ball". This additional tool can be very helpful in addition to the already available cleaning kit (Cat. No. 35100010) for the refillable plotter pens. 5 replacement tips are included with each suction ball.



Part. No. 35100013

Pen Cleaning

CLEANING UNIT

It is an easy-to-use cleaning unit developed specially for refillable pens. The cleaning unit enables the pens to be rinsed thoroughly while preventing skin contact with cleaning fluid or ink. The cleaning unit can be used for up to ten cleaning cycles. The necessary precautions must be taken when disposing of cleaning fluid, the cleaning unit can be reused.

PEN UNIT

This cleaning solution comes in easy to handle cartridges and is used in conjunction with the cleaning unit. A standard pack consists of two pen cleaner cartridges. Cleaning can be performed on standard refillable pens only.

Cleaning Set Part. No. 35100010



VP 500 Plotter Pen Station Care

Pen Station Care Labels

EK-team designed new labels to show in a graphical way how to keep the plotter pen station well maintained. This label can be applied directly on to the plotter so the operator always gets a reminder about the care of the plotter pen station. Ask Altech about your free instruction label or request the service kit.

Service Kit Part. No. 34090003

Service Kit

EK-Team provides a service kit for the plotter units VP500. The service kit includes 4 plotter pen station inserts, 1 wrench, 10 single primer plates, instruction label for care of plotter pen station as well as 1 recovery / storage stand for a plotter pen.

The most common problem that is reported, is that the plotter pen tips over in the pen station when picked up by the pen carrier. This problem occurs when the pen station is not well maintained. Remaining dried ink will cause the plotter pen to stick to the pen station, instead of being released during the pick up from the pen carrier. Therefore the service kit contains 4 new pen station inserts that can be easily exchanged with the included wrench.

The included 10 redesigned primer plates will ensure a much faster and more effective way to prime the plotter pens. Therefore the new primer plates now have a bigger and much rougher surface.

The pen station care label as well as the pen recovery and storage stand are included for your convenience.



Service Kit Part. No. 34090003

Engraver VE500 Add-on Unit

The engraving unit was specifically **designed to be used with the VP100 and VP500 plotters**. Changing back and forth between the pen-plotter and the engraver is easy. The engraver is meant to engrave plastic signs on double sided material, pre-cut or blank sheets, legend plates, push button inlays, etc. Any kind of design software can be used, e.g. Corel Draw, to create custom logos, symbols as signs, that saves the creation as a HPL plot file (HPGL). The add-on unit consists of an engraving head, spindle, controller, vacuum for a clean engraving process; as well as all cable and necessary connection parts. The engraver unit is controlled by the VarioSign software for ease of use and design flexibility.

ENGRAVER VE500 ADD-ON UNIT



Ordering Information

VE500 ENGRAVER UNIT (VP100/500 REQUIRED)34000040

Vacuum Cleaner Bag

Replacement bags for the VE500 engraver's vacuum cleaner

Engraving Unit Accessories

VACUUM CLEANER BAG



Ordering Information

VACUUM CLEANER BAG, SET OF 535020000

Engraver Fixtures

The universal support plates are used to hold the engraving materials precisely in place. Five sizes are offered for holding plastic sheets, aluminum and brass plates, etc.. The surface material is self sticking to hold different materials in place during the engraving process.

ENGRAVER FIXTURES



Ordering Information

| | |
|---------------------------------------|----------|
| FULL SIZE, A3 | 34902107 |
| HALF SIZE, A4 | 34902106 |
| 1/4 FIXTURE, 30 X 100mm, 9 FOLD | 34902115 |
| 1/4 FIXTURE, 60 X 100mm, 4 FOLD | 34902116 |
| 1/4 FIXTURE, 90 X 100mm, 3 FOLD | 34902117 |

Marking Systems

Engraving Needles

These engraving needles are to be used with the VE500 engraver. They are available in different angles and tip widths depending on shape and material that is being engraved. Needles for metal engraving are available, the double tooth cutter with fishtail can dip into metal quite easily to speed the grinding performance.

* Recommended needles for stainless steel

Please note that for stainless steel, only a surface engraving is possible, not deep like in plastic material.

ENGRAVING NEEDLE



Ordering Information

Engraving Needles for:

| Plastic Material | Engraving needle | Part Number |
|------------------|---|-------------|
| | Engraving needle 15° - 0.2 mm | 35010003 |
| | Engraving needle 15° - 0.3 mm | 35010002 |
| | Engraving needle 15° - 0.4 mm | 35010001 |
| | Engraving needle 15° - 0.5 mm | 35010000 |
| | Engraving needle 15° - 0.7 mm | 35010004 |
| | Engraving needle 15° - 1.0 mm | 35010005 |
| | Engraving needle 15° - set of 0.2; 0.3; 0.4; 0.5; 0.7; 1.0 mm | 35010006 |
| | Engraving needle 36° - 0.2 mm | 35010015 |
| | Engraving needle 36° - 0.3 mm | 35010016 |
| | Engraving needle 36° - 0.4 mm | 35010017 |
| | Engraving needle 36° - 0.5 mm | 35010018 |
| | Engraving needle 36° - 0.7 mm | 35010019 |
| | Engraving needle 36° - 1.0 mm | 35010020 |
| | Engraving needle 60° - 0.2 mm | 35010021 |
| | Engraving needle 60° - 0.3 mm | 35010022 |
| | Engraving needle 60° - 0.4 mm | 35010023 |
| | Engraving needle 60° - 0.5 mm | 35010024 |
| | Engraving needle 60° - 0.7 mm | 35010025 |
| | Engraving needle 60° - 1.0 mm | 35010026 |
| | Engraving needle 90° - 0.2 mm | 35010027 |
| | Engraving needle 90° - 0.3 mm | 35010028 |
| | Engraving needle 90° - 0.4 mm | 35010029 |
| | Engraving needle 90° - 0.5 mm | 35010010 |
| | Engraving needle 90° - 0.7 mm | 35010011 |
| | Engraving needle 90° - 1.0 mm | 35010012 |

| Metal | Engraving needle | Part Number |
|-------|---------------------------------------|-------------|
| | Engraving needle 35° - 0.2 mm* | 35010013 |
| | Engraving needle 35° - 0.4 mm* | 35010014 |
| | Double tooth cutter fishtail 0.5 mm | 35010030 |
| | Double tooth cutter fishtail 0.6 mm | 35010031 |
| | Double tooth cutter fishtail 0.8 mm | 35010032 |
| | Double tooth cutter fishtail 1.00 mm* | 35010033 |
| | Double tooth cutter fishtail 1.20 mm* | 35010034 |
| | Double tooth cutter fishtail 1.40 mm* | 35010035 |
| | Double tooth cutter fishtail 1.60 mm* | 35010036 |
| | Double tooth cutter fishtail 2.00 mm* | 35010037 |
| | Double tooth cutter fishtail 2.40 mm* | 35010038 |
| | Double tooth cutter fishtail 3.00 mm* | 35010039 |

EK-Team Service Center

Phone/Fax: 908-806-7035

- Warranty
- Service
- Repair
- Retrofitting
- VS200/210
- VP100
- VP500
- VE500
- OEM branded similar models





Slot for DVD

altechcorp.com

Altech Corp.®

Quality
Endorsed
Company



ISO 9001:2000
CERTIFICATE



Altech Search

Google™ Custom Search

Home

Stock Check

Distributors

Information

News

Contact Us

Rep / Dist Login

Altech Mexico

PRODUCTS

Circuit Protection / Control >

Connectors >

Enclosures >

European Spare Parts >

Foot Switches >

Interface Modules >

Power Supplies >

Push Buttons & Pilot Lights >

Relays & Contactors >

Sensors >

Terminal Blocks >

Wire & Cable Management >



Busbar
and Power
Distribution



Circuit
Protection
Devices



Contactors
and Overload
Relays



DIN
Enclosures



Din Rail
Terminal
Blocks



Distribution
Blocks



Eurostrips



European
Fuses



Ferrules



Foot
Switches



Inductive
Proximity
Sensors



Industrial
Enclosures



Interface
Modules



Liquid Tight
Strain Reliefs/
Corrugated
Tubes



Marking
Systems



Motor
Disconnect
Switches



Pin & Sleeve
Devices/
Receptacles



Power
Semiconductors



Panel Mount
Terminal
Blocks



Power
Supplies



Printed Circuit
Board Terminal
Blocks



22 & 30 mm
Push Buttons



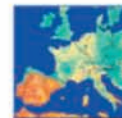
Safety
Relays



Slimline
Relays



Wire Duct



European
Spare Parts



DIN
Rail



Custom
Assembly

Altech Corporation
35 Royal Road
Flemington, NJ 08822-6000
Phone (908) 806-9400
Fax (908) 806-9490
www.altechcorp.com

Altech Corp.® 280-012010-3M

Компания «Океан Электроники» предлагает заключение долгосрочных отношений при поставках импортных электронных компонентов на взаимовыгодных условиях!

Наши преимущества:

- Поставка оригинальных импортных электронных компонентов напрямую с производств Америки, Европы и Азии, а так же с крупнейших складов мира;
- Широкая линейка поставок активных и пассивных импортных электронных компонентов (более 30 млн. наименований);
- Поставка сложных, дефицитных, либо снятых с производства позиций;
- Оперативные сроки поставки под заказ (от 5 рабочих дней);
- Экспресс доставка в любую точку России;
- Помощь Конструкторского Отдела и консультации квалифицированных инженеров;
- Техническая поддержка проекта, помощь в подборе аналогов, поставка прототипов;
- Поставка электронных компонентов под контролем ВП;
- Система менеджмента качества сертифицирована по Международному стандарту ISO 9001;
- При необходимости вся продукция военного и аэрокосмического назначения проходит испытания и сертификацию в лаборатории (по согласованию с заказчиком);
- Поставка специализированных компонентов военного и аэрокосмического уровня качества (Xilinx, Altera, Analog Devices, Intersil, Interpoint, Microsemi, Actel, Aeroflex, Peregrine, VPT, Syfer, Eurofarad, Texas Instruments, MS Kennedy, Miteq, Cobham, E2V, MA-COM, Hittite, Mini-Circuits, General Dynamics и др.);

Компания «Океан Электроники» является официальным дистрибьютором и эксклюзивным представителем в России одного из крупнейших производителей разъемов военного и аэрокосмического назначения «JONHON», а так же официальным дистрибьютором и эксклюзивным представителем в России производителя высокотехнологичных и надежных решений для передачи СВЧ сигналов «FORSTAR».



JONHON

«JONHON» (основан в 1970 г.)

Разъемы специального, военного и аэрокосмического назначения:

(Применяются в военной, авиационной, аэрокосмической, морской, железнодорожной, горно- и нефтедобывающей отраслях промышленности)

«FORSTAR» (основан в 1998 г.)

ВЧ соединители, коаксиальные кабели, кабельные сборки и микроволновые компоненты:

(Применяются в телекоммуникациях гражданского и специального назначения, в средствах связи, РЛС, а так же военной, авиационной и аэрокосмической отраслях промышленности).



Телефон: 8 (812) 309-75-97 (многоканальный)

Факс: 8 (812) 320-03-32

Электронная почта: ocean@oceanchips.ru

Web: <http://oceanchips.ru/>

Адрес: 198099, г. Санкт-Петербург, ул. Калинина, д. 2, корп. 4, лит. А