

FEATURES

- Bidirectional I²C communication**
- Open-drain interfaces**
- Suitable for hot swap applications**
- 30 mA current sink capability**
- 1000 kHz operation**
- 3.0 V to 5.5 V supply/logic levels**
- 8-lead, RoHS compliant SOIC package**
- High temperature operation: 125°C**
- Qualified for automotive applications**
- Safety and regulatory approvals**

- UL recognition**
- 2500 V rms for 1 minute per UL 1577
- CSA Component Acceptance Notice 5A**
- VDE certificate of conformity**
- DIN V VDE V 0884-10 (VDE V 0884-10):2006-12
- V_{IORM} = 560 V peak**

APPLICATIONS

- Isolated I²C, SMBus, or PMBus interfaces**
- Multilevel I²C interfaces**
- Power supplies**
- Networking**
- Power over Ethernet**
- Hybrid electric vehicle battery management**

GENERAL DESCRIPTION

The ADuM1250/ADuM1251¹ are hot swappable digital isolators with nonlatching, bidirectional communication channels that are compatible with I²C interfaces. This eliminates the need for splitting I²C signals into separate transmit and receive signals for use with standalone optocouplers.

The ADuM1250 provides two bidirectional channels, supporting a complete isolated I²C interface. The ADuM1251 provides one bidirectional channel and one unidirectional channel for applications where a bidirectional clock is not required.

FUNCTIONAL BLOCK DIAGRAMS

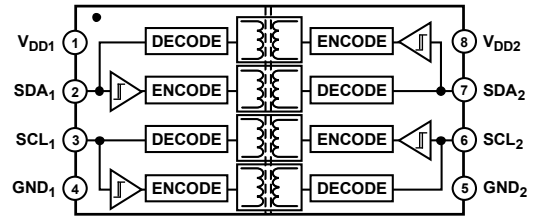


Figure 1. ADuM1250

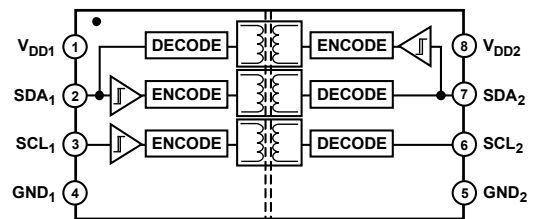


Figure 2. ADuM1251

Both the ADuM1250 and the ADuM1251 contain hot swap circuitry to prevent glitching data when an unpowered card is inserted onto an active bus.

These isolators are based on the iCoupler® chip scale transformer technology from Analog Devices, Inc. iCoupler is a magnetic isolation technology with functional, performance, size, and power consumption advantages as compared to optocouplers. With the ADuM1250/ADuM1251, iCoupler channels can be integrated with semiconductor circuitry, which enables a complete isolated I²C interface to be implemented in a small form factor.

¹ Protected by U.S. Patents 5,952,849; 6,873,065; and 7,075,329.

TABLE OF CONTENTS

| | | | |
|---|---|---|----|
| Features | 1 | ESD Caution | 7 |
| Applications | 1 | Pin Configuration and Function Descriptions | 8 |
| Functional Block Diagrams..... | 1 | Test Conditions | 9 |
| General Description | 1 | Applications Information | 10 |
| Revision History | 2 | Functional Description..... | 10 |
| Specifications | 3 | Startup..... | 10 |
| Electrical Characteristics | 3 | Typical Application Diagram..... | 11 |
| Package Characteristics | 5 | Capacitive Load at Low Speeds | 11 |
| Regulatory Information..... | 5 | Magnetic Field Immunity | 12 |
| Insulation and Safety Related Specifications..... | 5 | Outline Dimensions..... | 13 |
| DIN V VDE V 0884-10 (VDE V 0884-10) Insulation | | Ordering Guide | 13 |
| Characteristics | 6 | Automotive Products | 13 |
| Recommended Operating Conditions | 6 | | |
| Absolute Maximum Ratings | 7 | | |

REVISION HISTORY

3/2020—Rev. H to Rev. I

| | |
|---|---|
| Changes to Side 2 (V_{SDA2} , V_{SCL2}) Parameter, Table 8..... | 7 |
|---|---|

7/2015—Rev. G to Rev. H

| | |
|-------------------------------------|---|
| Changes to Table 4 and Table 5..... | 5 |
|-------------------------------------|---|

3/2014—Rev. F to Rev. G

| | |
|--|----|
| Moved Typical Application Diagram Section..... | 11 |
| Added Capacitive Load at Low Speeds Section and Table 11 | 11 |
| Moved Magnetic Field Immunity Section | 12 |
| Changes to Ordering Guide..... | 13 |

9/2012—Rev. E to Rev. F

| | |
|---|----|
| Created Hyperlink for Safety and Regulatory Approvals | |
| Entry in Features Section | 1 |
| Changes to Ordering Guide..... | 12 |

12/2011—Rev. D to Rev. E

| | |
|--|----|
| Change to Ordering Guide..... | 12 |
| Changes to Automotive Products Section | 12 |

7/2011—Rev. C to Rev. D

| | |
|---|----|
| Change to Typical Application Diagram Section | 11 |
|---|----|

5/2010—Rev. B to Rev. C

| | |
|---|----|
| Changes to Features Section and Applications Section..... | 1 |
| Changed $V_{DD1} = 5\text{ V}$, and $V_{DD2} = 5\text{ V}$ to $V_{DD1} = 3.3\text{ V}$ or 5 V , and $V_{DD2} = 3.3\text{ V}$ or 5 V | 3 |
| Changed $V_{DD1} = 5\text{ V}$, and $V_{DD2} = 5\text{ V}$ to $V_{DD1} = 3.3\text{ V}$ or 5 V , and $V_{DD2} = 3.3\text{ V}$ or 5 V | 4 |
| Changes to Typical Application Diagram Section and Figure 9..... | 11 |
| Changes to Ordering Guide..... | 12 |
| Added Automotive Products Section..... | 12 |

12/2009—Rev. A to Rev. B

| | |
|---|----|
| Changes to Features Section | 1 |
| Changes to Operating Temperature (T_A) Parameter, Table 7.... | 6 |
| Changes to Ambient Operating Temperature (T_A) Parameter, Table 8..... | 7 |
| Changes to Ordering Guide..... | 12 |

6/2007—Rev. 0 to Rev. A

| | |
|---|----|
| Updated VDE Certification Throughout..... | 1 |
| Changes to Features and Note 1..... | 1 |
| Changes to Table 4 and Table 5 | 5 |
| Changes to Table 6..... | 6 |
| Updated Outline Dimensions | 12 |
| Changes to Ordering Guide..... | 12 |

10/2006—Revision 0: Initial Version

SPECIFICATIONS

ELECTRICAL CHARACTERISTICS

DC Specifications¹

All minimum/maximum specifications apply over the entire recommended operating range, unless otherwise noted. All typical specifications are at $T_A = 25^\circ\text{C}$, $V_{DD1} = 3.3\text{ V}$ or 5 V , and $V_{DD2} = 3.3\text{ V}$ or 5 V , unless otherwise noted.

Table 1.

| Parameter | Symbol | Min | Typ | Max | Unit | Test Conditions/Comments |
|--|---|---------------|------|---------------|---------------|---|
| ADuM1250 | | | | | | |
| Input Supply Current, Side 1, 5 V | I_{DD1} | | 2.8 | 5.0 | mA | $V_{DD1} = 5\text{ V}$ |
| Input Supply Current, Side 2, 5 V | I_{DD2} | | 2.7 | 5.0 | mA | $V_{DD2} = 5\text{ V}$ |
| Input Supply Current, Side 1, 3.3 V | I_{DD1} | | 1.9 | 3.0 | mA | $V_{DD1} = 3.3\text{ V}$ |
| Input Supply Current, Side 2, 3.3 V | I_{DD2} | | 1.7 | 3.0 | mA | $V_{DD2} = 3.3\text{ V}$ |
| ADuM1251 | | | | | | |
| Input Supply Current, Side 1, 5 V | I_{DD1} | | 2.8 | 6.0 | mA | $V_{DD1} = 5\text{ V}$ |
| Input Supply Current, Side 2, 5 V | I_{DD2} | | 2.5 | 4.7 | mA | $V_{DD2} = 5\text{ V}$ |
| Input Supply Current, Side 1, 3.3 V | I_{DD1} | | 1.8 | 3.0 | mA | $V_{DD1} = 3.3\text{ V}$ |
| Input Supply Current, Side 2, 3.3 V | I_{DD2} | | 1.6 | 2.8 | mA | $V_{DD2} = 3.3\text{ V}$ |
| LEAKAGE CURRENTS | $I_{SDA1}, I_{SDA2},$ I_{SCL1}, I_{SCL2} | | 0.01 | 10 | μA | $V_{SDA1} = V_{DD1}, V_{SDA2} = V_{DD2},$ $V_{SCL1} = V_{DD1}, V_{SCL2} = V_{DD2}$ |
| SIDE 1 LOGIC LEVELS | | | | | | |
| Logic Input Threshold ² | V_{SDA1T}, V_{SCL1T} | 500 | | 700 | mV | |
| Logic Low Output Voltages | V_{SDA1OL}, V_{SCL1OL} | 600 | | 900 | mV | $I_{SDA1} = I_{SCL1} = 3.0\text{ mA}$ |
| | | 600 | | 850 | mV | $I_{SDA1} = I_{SCL1} = 0.5\text{ mA}$ |
| Input/Output Logic Low Level Difference ³ | $\Delta V_{SDA1}, \Delta V_{SCL1}$ | 50 | | | mV | |
| SIDE 2 LOGIC LEVELS | | | | | | |
| Logic Low Input Voltage | V_{SDA2IL}, V_{SCL2IL} | | | $0.3 V_{DD2}$ | V | |
| Logic High Input Voltage | V_{SDA2IH}, V_{SCL2IH} | $0.7 V_{DD2}$ | | | V | |
| Logic Low Output Voltage | V_{SDA2OL}, V_{SCL2OL} | | | 400 | mV | $I_{SDA2} = I_{SCL2} = 30\text{ mA}$ |

¹ All voltages are relative to their respective ground.

² $V_{IL} < 0.5\text{ V}$, $V_{IH} > 0.7\text{ V}$.

³ $\Delta V_{S1} = V_{S1OL} - V_{S1T}$. This is the minimum difference between the output logic low level and the input logic threshold within a given component. This ensures that there is no possibility of the part latching up the bus to which it is connected.

AC Specifications¹

All minimum/maximum specifications apply over the entire recommended operating range, unless otherwise noted. All typical specifications are at $T_A = 25^\circ\text{C}$, $V_{DD1} = 3.3\text{ V}$ or 5 V , and $V_{DD2} = 3.3\text{ V}$ or 5 V , unless otherwise noted. Refer to Figure 5.

Table 2.

| Parameter | Symbol | Min | Typ | Max | Unit | Test Conditions/Comments |
|---|------------------|------|-----|-----|-------------------|--|
| MAXIMUM FREQUENCY | | 1000 | | | kHz | |
| OUTPUT FALL TIME | | | | | | |
| 5 V Operation | | | | | | $4.5\text{ V} \leq V_{DD1}, V_{DD2} \leq 5.5\text{ V}$, $C_{L1} = 40\text{ pF}$, $R1 = 1.6\text{ k}\Omega$, $C_{L2} = 400\text{ pF}$, $R2 = 180\text{ }\Omega$ |
| Side 1 Output ($0.9 V_{DD1}$ to 0.9 V) | t_{f1} | 13 | 26 | 120 | ns | |
| Side 2 Output ($0.9 V_{DD2}$ to $0.1 V_{DD2}$) | t_{f2} | 32 | 52 | 120 | ns | |
| 3 V Operation | | | | | | $3.0\text{ V} \leq V_{DD1}, V_{DD2} \leq 3.6\text{ V}$, $C_{L1} = 40\text{ pF}$, $R1 = 1.0\text{ k}\Omega$, $C_{L2} = 400\text{ pF}$, $R2 = 120\text{ }\Omega$ |
| Side 1 Output ($0.9 V_{DD1}$ to 0.9 V) | t_{f1} | 13 | 32 | 120 | ns | |
| Side 2 Output ($0.9 V_{DD2}$ to $0.1 V_{DD2}$) | t_{f2} | 32 | 61 | 120 | ns | |
| PROPAGATION DELAY | | | | | | |
| 5 V Operation | | | | | | $4.5 \leq V_{DD1}, V_{DD2} \leq 5.5\text{ V}$, $C_{L1} = C_{L2} = 0\text{ pF}$, $R1 = 1.6\text{ k}\Omega$, $R2 = 180\text{ }\Omega$ |
| Side 1 to Side 2, Rising Edge ² | t_{PLH12} | | 95 | 130 | ns | |
| Side 1 to Side 2, Falling Edge ³ | t_{PHL12} | | 162 | 275 | ns | |
| Side 2 to Side 1, Rising Edge ⁴ | t_{PLH21} | | 31 | 70 | ns | |
| Side 2 to Side 1, Falling Edge ⁵ | t_{PHL21} | | 85 | 155 | ns | |
| 3 V Operation | | | | | | $3.0\text{ V} \leq V_{DD1}, V_{DD2} \leq 3.6\text{ V}$, $C_{L1} = C_{L2} = 0\text{ pF}$, $R1 = 1.0\text{ k}\Omega$, $R2 = 120\text{ }\Omega$ |
| Side 1 to Side 2, Rising Edge ² | t_{PLH12} | | 82 | 125 | ns | |
| Side 1 to Side 2, Falling Edge ³ | t_{PHL12} | | 196 | 340 | ns | |
| Side 2 to Side 1, Rising Edge ⁴ | t_{PLH21} | | 32 | 75 | ns | |
| Side 2 to Side 1, Falling Edge ⁵ | t_{PHL21} | | 110 | 210 | ns | |
| PULSE WIDTH DISTORTION | | | | | | |
| 5 V Operation | | | | | | $4.5\text{ V} \leq V_{DD1}, V_{DD2} \leq 5.5\text{ V}$, $C_{L1} = C_{L2} = 0\text{ pF}$, $R1 = 1.6\text{ k}\Omega$, $R2 = 180\text{ }\Omega$ |
| Side 1 to Side 2, $ t_{PLH12} - t_{PHL12} $ | PWD_{12} | | 67 | 145 | ns | |
| Side 2 to Side 1, $ t_{PLH21} - t_{PHL21} $ | PWD_{21} | | 54 | 85 | ns | |
| 3 V Operation | | | | | | $3.0\text{ V} \leq V_{DD1}, V_{DD2} \leq 3.6\text{ V}$, $C_{L1} = C_{L2} = 0\text{ pF}$, $R1 = 1.0\text{ k}\Omega$, $R2 = 120\text{ }\Omega$ |
| Side 1 to Side 2, $ t_{PLH12} - t_{PHL12} $ | PWD_{12} | | 114 | 215 | ns | |
| Side 2 to Side 1, $ t_{PLH21} - t_{PHL21} $ | PWD_{21} | | 77 | 135 | ns | |
| COMMON-MODE TRANSIENT IMMUNITY ⁶ | $ CM_H , CM_L $ | 25 | 35 | | kV/ μs | |

¹ All voltages are relative to their respective ground.

² t_{PLH12} propagation delay is measured from the Side 1 input logic threshold to an output value of $0.7 V_{DD2}$.

³ t_{PHL12} propagation delay is measured from the Side 1 input logic threshold to an output value of 0.4 V .

⁴ t_{PLH21} propagation delay is measured from the Side 2 input logic threshold to an output value of $0.7 V_{DD1}$.

⁵ t_{PHL21} propagation delay is measured from the Side 2 input logic threshold to an output value of 0.9 V .

⁶ CM_H is the maximum common-mode voltage slew rate that can be sustained while maintaining $V_O > 0.8 V_{DD2}$. CM_L is the maximum common-mode voltage slew rate that can be sustained while maintaining $V_O < 0.8\text{ V}$. The common-mode voltage slew rates apply to both rising and falling common-mode voltage edges. The transient magnitude is the range over which the common mode is slewed.

PACKAGE CHARACTERISTICS

Table 3.

| Parameter | Symbol | Min | Typ | Max | Unit | Test Conditions/Comments |
|--|------------------|-----|------------------|-----|------|---|
| Resistance (Input to Output) ¹ | R _{I-O} | | 10 ¹² | | Ω | |
| Capacitance (Input to Output) ¹ | C _{I-O} | | 1.0 | | pF | f = 1 MHz |
| Input Capacitance | C _I | | 4.0 | | pF | |
| IC Junction to Case Thermal Resistance, Side 1 | θ _{JCI} | | 46 | | °C/W | Thermocouple located at center of package underside |
| IC Junction to Case Thermal Resistance, Side 2 | θ _{JCO} | | 41 | | °C/W | |

¹ The device is considered a 2-terminal device; Pin 1 through Pin 4 are shorted together, and Pin 5 through Pin 8 are shorted together.

REGULATORY INFORMATION

The ADuM1250/ADuM1251 have been approved by the organizations listed in Table 4.

Table 4.

| UL | CSA | CQC | VDE |
|--|---|---|--|
| Recognized Under 1577 Component Recognition Program ¹ | Approved under CSA Component Acceptance Notice 5A | Approved under CQC11-471543-2012 | Certified according to DIN V VDE V 0884-10 (VDE V 0884-10): 2006-12 ² |
| Single/Basic 2500 V rms Isolation Voltage | Reinforced insulation per CSA 60950-1-03 and IEC 60950-1, 125 V rms (177 V peak) maximum working voltage Basic insulation per CSA 60950-1-03 and IEC 60950-1, 400 V rms (566 V peak) maximum working voltage | Basic insulation per GB4943.1-2011, 400 V rms (566 V peak) maximum working voltage, tropical climate, altitude ≤ 5000 m | Reinforced insulation, 560 V peak |
| File E214100 | File 205078 | File CQC14001108691 | File 2471900-4880-0001 |

¹ In accordance with UL 1577, each ADuM1250/ADuM1251 is proof tested by applying an insulation test voltage ≥ 3000 V rms for 1 second (current leakage detection limit = 5 μA).

² In accordance with DIN V VDE V 0884-10, each ADuM1250/ADuM1251 is proof tested by applying an insulation test voltage ≥ 1050 V peak for 1 sec (partial discharge detection limit = 5 pC). The asterisk (*) marking branded on the component designates DIN V VDE V 0884-10 approval.

INSULATION AND SAFETY RELATED SPECIFICATIONS

Table 5.

| Parameter | Symbol | Value | Unit | Test Conditions/Comments |
|--|-------------------|-----------|--------|--|
| Rated Dielectric Insulation Voltage | | 2500 | V rms | 1-minute duration |
| Minimum External Air Gap (Clearance) | L(I01) | 4.90 min | mm | Measured from input terminals to output terminals, shortest distance through air |
| Minimum External Tracking (Creepage) | L(I02) | 4.01 min | mm | Measured from input terminals to output terminals, shortest distance path along body |
| Minimum Internal Gap (Internal Clearance) | | 0.017 min | mm | Insulation distance through insulation |
| Tracking Resistance (Comparative Tracking Index) | CTI | >400 | V | DIN IEC 112/VDE 0303 Part 1 |
| Isolation Group | | II | | Material Group (DIN VDE 0110, 1/89, Table 1) |
| Maximum Working Voltage Compatible with 50 Year Service Life | V _{IORM} | 565 | V peak | Continuous peak voltage across the isolation barrier |

DIN V VDE V 0884-10 (VDE V 0884-10) INSULATION CHARACTERISTICS

This isolator is suitable for reinforced isolation only within the safety limit data. Maintenance of the safety data is ensured by protective circuits. The asterisk (*) marking on the package denotes DIN V VDE V 0884-10 approval for a 560 V peak working voltage.

Table 6.

| Description | Test Conditions/Comments | Symbol | Characteristic | Unit |
|---|--|-------------------|--------------------------------|--------|
| Installation Classification per DIN VDE 0110 For Rated Mains Voltage ≤ 150 V rms For Rated Mains Voltage ≤ 300 V rms For Rated Mains Voltage ≤ 400 V rms | | | I to IV I to III I to II | |
| Climatic Classification | | | 40/105/21 | |
| Pollution Degree per DIN VDE 0110, Table 1 | | | 2 | |
| Maximum Working Insulation Voltage | | V _{IORM} | 560 | V peak |
| Input to Output Test Voltage, Method B1 | V _{IORM} × 1.875 = V _{PR} , 100% production test, t _m = 1 sec, partial discharge < 5 pC | V _{PR} | 1050 | V peak |
| Input to Output Test Voltage, Method A After Environmental Tests Subgroup 1 | V _{IORM} × 1.6 = V _{PR} , t _m = 60 sec, partial discharge < 5 pC | V _{PR} | 896 | V peak |
| After Input and/or Safety Tests Subgroup 2 and Subgroup 3 | V _{IORM} × 1.2 = V _{PR} , t _m = 60 sec, partial discharge < 5 pC | | 672 | V peak |
| Highest Allowable Overvoltage | Transient overvoltage, t _{TR} = 10 sec | V _{TR} | 4000 | V peak |
| Safety Limiting Values | Maximum value allowed in the event of a failure (see Figure 3) | | | |
| Case Temperature | | T _S | 150 | °C |
| V _{DD1} + V _{DD2} Current | | I _{TMAX} | 212 | mA |
| Insulation Resistance at T _S | V _{IO} = 500 V | R _S | >10 ⁹ | Ω |

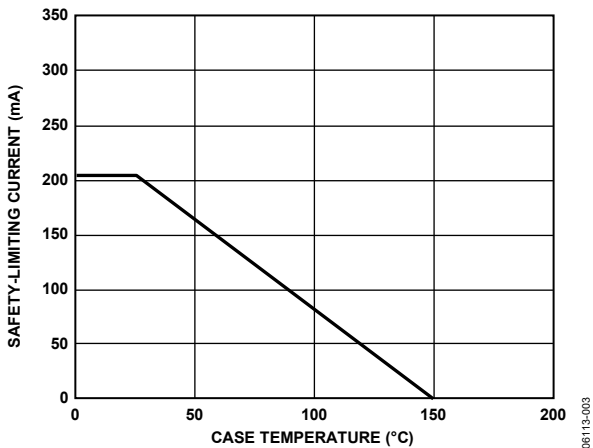


Figure 3. Thermal Derating Curve, Dependence of Safety-Limiting Values on Case Temperature, per DIN V VDE V 0884-10

RECOMMENDED OPERATING CONDITIONS

Table 7.

| Parameter | Rating |
|--|-----------------|
| Operating Temperature (T _A) | |
| A Grade | –40°C to +105°C |
| S Grade | –40°C to +125°C |
| Supply Voltages (V _{DD1} , V _{DD2}) ¹ | 3.0 V to 5.5 V |
| Input/Output Signal Voltage (V _{SDA1} , V _{SCL1} , V _{SDA2} , V _{SCL2}) | 5.5 V |
| Capacitive Load | |
| Side 1 (C _{L1}) | 40 pF |
| Side 2 (C _{L2}) | 400 pF |
| Static Output Loading | |
| Side 1 (I _{SDA1} , I _{SCL1}) | 0.5 mA to 3 mA |
| Side 2 (I _{SDA2} , I _{SCL2}) | 0.5 mA to 30 mA |

¹ All voltages are relative to their respective ground. See the Magnetic Field Immunity section for information about immunity to external magnetic fields.

ABSOLUTE MAXIMUM RATINGS

Ambient temperature = 25°C, unless otherwise noted.

Table 8.

| Parameter | Rating |
|--|-----------------------------|
| Storage Temperature (T_{ST}) | -55°C to +150°C |
| Ambient Operating Temperature (T_A) | |
| A Grade | -40°C to +105°C |
| S Grade | -40°C to +125°C |
| Supply Voltages (V_{DD1} , V_{DD2}) ¹ | -0.5 V to +7.0 V |
| Input/Output Voltage, | |
| Side 1 (V_{SDA1} , V_{SCL1}) ² | -0.5 V to $V_{DD1} + 0.5$ V |
| Side 2 (V_{SDA2} , V_{SCL2}) ² | -0.5 V to +7.0 V |
| Average Output Current per Pin ² | |
| Side 1 (I_{O1}) | ±18 mA |
| Side 2 (I_{O2}) | ±100 mA |
| Common-Mode Transients ³ | -100 kV/μs to +100 kV/μs |

¹ All voltages are relative to their respective ground.

² See Figure 3 for maximum rated current values for various temperatures.

³ Refers to common-mode transients across the insulation barrier. Common-mode transients exceeding the absolute maximum rating may cause latch-up or permanent damage.

Stresses at or above those listed under Absolute Maximum Ratings may cause permanent damage to the product. This is a stress rating only; functional operation of the product at these or any other conditions above those indicated in the operational section of this specification is not implied. Operation beyond the maximum operating conditions for extended periods may affect product reliability.

ESD CAUTION



ESD (electrostatic discharge) sensitive device. Charged devices and circuit boards can discharge without detection. Although this product features patented or proprietary protection circuitry, damage may occur on devices subjected to high energy ESD. Therefore, proper ESD precautions should be taken to avoid performance degradation or loss of functionality.

PIN CONFIGURATION AND FUNCTION DESCRIPTIONS



Figure 4. ADuM1250/ADuM1251 Pin Configuration

Table 9. ADuM1250 Pin Function Descriptions

| Pin No. | Mnemonic | Description |
|---------|------------------|--|
| 1 | V _{DD1} | Supply Voltage, 3.0 V to 5.5 V. |
| 2 | SDA ₁ | Data Input/Output, Side 1. |
| 3 | SCL ₁ | Clock Input/Output, Side 1. |
| 4 | GND ₁ | Ground 1. Ground reference for Isolator Side 1. |
| 5 | GND ₂ | Ground 2. Isolated ground reference for Isolator Side 2. |
| 6 | SCL ₂ | Clock Input/Output, Side 2. |
| 7 | SDA ₂ | Data Input/Output, Side 2. |
| 8 | V _{DD2} | Supply Voltage, 3.0 V to 5.5 V. |

Table 10. ADuM1251 Pin Function Descriptions

| Pin No. | Mnemonic | Description |
|---------|------------------|--|
| 1 | V _{DD1} | Supply Voltage, 3.0 V to 5.5 V. |
| 2 | SDA ₁ | Data Input/Output, Side 1. |
| 3 | SCL ₁ | Clock Input, Side 1. |
| 4 | GND ₁ | Ground 1. Ground reference for Isolator Side 1. |
| 5 | GND ₂ | Ground 2. Isolated ground reference for Isolator Side 2. |
| 6 | SCL ₂ | Clock Output, Side 2. |
| 7 | SDA ₂ | Data Input/Output, Side 2. |
| 8 | V _{DD2} | Supply Voltage, 3.0 V to 5.5 V. |

TEST CONDITIONS



Figure 5. Timing Test Diagram

APPLICATIONS INFORMATION

FUNCTIONAL DESCRIPTION

The ADuM1250/ADuM1251 interface on each side to a bidirectional I²C signal. Internally, the I²C interface is split into two unidirectional channels communicating in opposing directions via a dedicated iCoupler isolation channel for each. One channel (the bottom channel of each channel pair shown in Figure 6) senses the voltage state of the Side 1 I²C pin and transmits its state to its respective Side 2 I²C pin.

Both the Side 1 and the Side 2 I²C pins are designed to interface to an I²C bus operating in the 3.0 V to 5.5 V range. A logic low on either pin causes the opposite pin to be pulled low enough to comply with the logic low threshold requirements of other I²C devices on the bus. Avoidance of I²C bus contention is ensured by an input low threshold at SDA₁ or SCL₁ guaranteed to be at least 50 mV less than the output low signal at the same pin. This prevents an output logic low at Side 1 being transmitted back to Side 2 and pulling down the I²C bus.

Because the Side 2 logic levels/thresholds are standard I²C values, multiple ADuM1250/ADuM1251 devices connected to a bus by their Side 2 pins can communicate with each other and with other I²C compatible devices. A distinction is made between I²C compatibility and I²C compliance. I²C compatibility refers to situations in which the logic levels of a component do not necessarily meet the requirements of the I²C specification but still allow the component to communicate with an I²C compliant device. I²C compliance refers to situations in which the logic levels of a component meet the requirements of the I²C specification.

However, because the Side 1 pin has a modified output level/input threshold, this side of the ADuM1250/ADuM1251 can communicate only with devices that conform to the I²C standard. In other words, Side 2 of the ADuM1250/ADuM1251 is I²C compliant, whereas Side 1 is only I²C compatible.

The output logic low levels are independent of the V_{DD1} and V_{DD2} voltages. The input logic low threshold at Side 1 is also independent of V_{DD1}. However, the input logic low threshold at Side 2 is designed to be at 0.3 V_{DD2}, consistent with I²C requirements. The Side 1 and Side 2 pins have open-collector outputs whose high levels are set via pull-up resistors to their respective supply voltages.

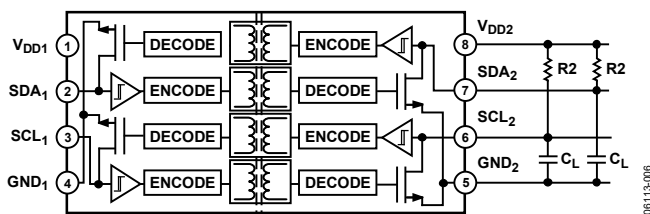


Figure 6. ADuM1250 Block Diagram

STARTUP

Both the V_{DD1} and V_{DD2} supplies have an undervoltage lockout feature to prevent the signal channels from operating unless certain criteria are met. This feature prevents input logic low signals from pulling down the I²C bus inadvertently during power-up/power-down.

For the signal channels to be enabled, the following two criteria must be met:

- Both supplies must be at least 2.5 V.
- At least 40 μs must elapse after both supplies exceed the internal startup threshold of 2.0 V.

Until both criteria are met for both supplies, the ADuM1250/ADuM1251 outputs are pulled high, ensuring a startup that avoids any disturbances on the bus. Figure 7 and Figure 8 illustrate the supply conditions for fast and slow input supply slew rates.

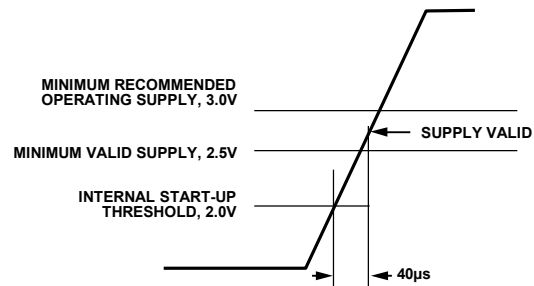


Figure 7. Start-Up Condition, Supply Slew Rate > 12.5 V/ms

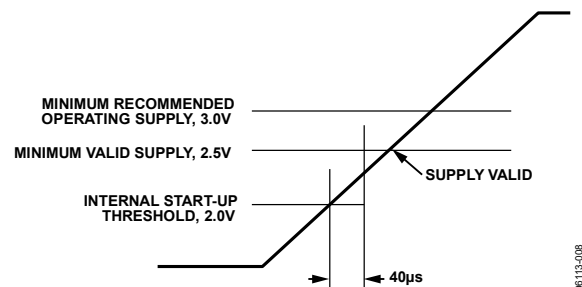


Figure 8. Start-Up Condition, Supply Slew Rate < 12.5 V/ms

TYPICAL APPLICATION DIAGRAM

Figure 9 shows a typical application circuit including the pull-up resistors required for both Side 1 and Side 2 buses. Bypass capacitors with values from 0.01 μF to 0.1 μF are required between V_{DD1} and GND_1 and between V_{DD2} and GND_2 . The 200 Ω resistor shown in Figure 9 is required for latch-up immunity if the ambient temperature can be between 105°C and 125°C.

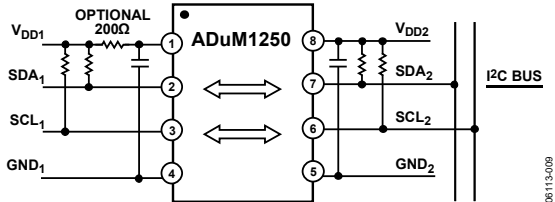


Figure 9. Typical Isolated I²C Interface Using the ADuM1250

CAPACITIVE LOAD AT LOW SPEEDS

The ADuM1250/ADuM1251 are designed for operation at speeds up to 1 Mbps. Due to the limited current available on Side 1, operation at 1 Mbps limits the capacitance that can be driven at the minimum pull-up value to 40 pF.

Most applications operate at 100 kbps in standard mode or 400 kbps in fast mode. At these lower operating speeds, the limitation on the load capacitance can be significantly relaxed. Table 11 shows the maximum capacitance at minimum pull-up values for standard and fast operating modes. If larger values for the pull up resistor are used, the maximum supported capacitance must be scaled down proportionately so that the rise time does not increase beyond the values required by the standard.

Table 11. Side 1 Maximum Load Conditions

| Maximum Capacitive Load for Side 1 | | | | | | |
|------------------------------------|------------------|------------------|------------|------------|--------------------|---------------|
| Mode | V_{DD1} | Data Rate (kbps) | t_r (ns) | t_f (ns) | R_1 (Ω) | C_{L1} (pF) |
| Standard | 5 | 100 | 1000 | 187 | 1600 | 484 |
| Fast | 5 | 400 | 300 | 172 | 1600 | 120 |
| Standard | 3.3 | 100 | 1000 | 270 | 1000 | 771 |
| Fast | 3.3 | 400 | 300 | 235 | 1000 | 188 |

MAGNETIC FIELD IMMUNITY

The ADuM1250/ADuM1251 are extremely immune to external magnetic fields. The limitation on the magnetic field immunity of the ADuM1250/ADuM1251 is set by the condition in which induced voltage in the receiving coil of the transformer is sufficiently large to either falsely set or reset the decoder. The following analysis defines the conditions under which this may occur. The 3 V operating condition of the ADuM1250/ADuM1251 is examined because it represents the most susceptible mode of operation.

The pulses at the transformer output have an amplitude greater than 1.0 V. The decoder has a sensing threshold at approximately 0.5 V, thus establishing a 0.5 V margin in which induced voltages can be tolerated. The voltage induced across the receiving coil is given by

$$V = (-d\beta/dt) \sum \pi r_n^2; n = 1, 2, \dots, N$$

where:

β is the magnetic flux density (gauss).

r_n is the radius of the n^{th} turn in the receiving coil (cm).

N is the total number of turns in the receiving coil.

Given the geometry of the receiving coil in the ADuM1250/ADuM1251 and an imposed requirement that the induced voltage be, at most, 50% of the 0.5 V margin at the decoder, a maximum allowable magnetic field is calculated as shown in Figure 10.



Figure 10. Maximum Allowable External Magnetic Flux Density

For example, at a magnetic field frequency of 1 MHz, the maximum allowable magnetic field of 0.2 kgauss induces a voltage of 0.25 V at the receiving coil. This voltage is approximately 50% of the sensing threshold and does not cause a faulty output transition. Similarly, if such an event occurs during a transmitted pulse (and is of the worst-case polarity), it reduces the received pulse from >1.0 V to 0.75 V, still well above the 0.5 V sensing threshold of the decoder.

The preceding magnetic flux density values correspond to specific current magnitudes at given distances away from the ADuM1250/ADuM1251 transformers. Figure 11 expresses these allowable current magnitudes as a function of frequency for selected distances. As shown in Figure 11, the ADuM1250/ADuM1251 are extremely immune and can be affected only by extremely large currents operated at high frequency very close to the component. For the 1 MHz example, a 0.5 kA current placed 5 mm away from the ADuM1250/ADuM1251 is required to affect the operation of the component.

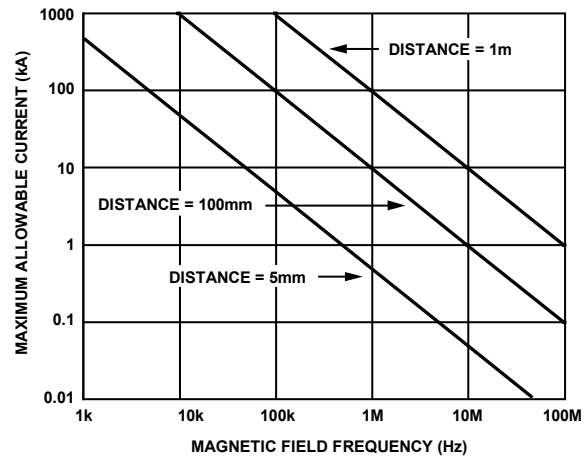


Figure 11. Maximum Allowable Current for Various Current-to-ADuM1250/ADuM1251 Spacings

Note that at combinations of strong magnetic field and high frequency, any loops formed by PCB traces can induce error voltages sufficiently large to trigger the thresholds of succeeding circuitry. Exercise care in the layout of such traces to avoid this possibility.

OUTLINE DIMENSIONS



COMPLIANT TO JEDEC STANDARDS MS-012-AA
 CONTROLLING DIMENSIONS ARE IN MILLIMETERS; INCH DIMENSIONS (IN PARENTHESES) ARE ROUNDED-OFF MILLIMETER EQUIVALENTS FOR REFERENCE ONLY AND ARE NOT APPROPRIATE FOR USE IN DESIGN.

012407-A

Figure 12. 8-Lead Standard Small Outline Package [SOIC_N] Narrow Body (R-8)
 Dimensions shown in millimeters and (inches)

ORDERING GUIDE

| Model ^{1,2} | Number of Inputs, V _{DD1} Side | Number of Inputs, V _{DD2} Side | Maximum Data Rate (Mbps) | Maximum Propagation Delay (ns) | Temperature Range | Package Description | Package Option |
|----------------------|---|---|--------------------------|--------------------------------|-------------------|---------------------|----------------|
| ADuM1250ARZ | 2 | 2 | 1 | 150 | -40°C to +105°C | 8-Lead SOIC_N | R-8 |
| ADuM1250ARZ-RL7 | 2 | 2 | 1 | 150 | -40°C to +105°C | 8-Lead SOIC_N | R-8 |
| ADuM1250SRZ | 2 | 2 | 1 | 150 | -40°C to +125°C | 8-Lead SOIC_N | R-8 |
| ADuM1250SRZ-RL7 | 2 | 2 | 1 | 150 | -40°C to +125°C | 8-Lead SOIC_N | R-8 |
| ADuM1250WSRZ | 2 | 2 | 1 | 150 | -40°C to +125°C | 8-Lead SOIC_N | R-8 |
| ADuM1250WSRZ-RL7 | 2 | 2 | 1 | 150 | -40°C to +125°C | 8-Lead SOIC_N | R-8 |
| ADuM1251ARZ | 2 | 1 | 1 | 150 | -40°C to +105°C | 8-Lead SOIC_N | R-8 |
| ADuM1251ARZ-RL7 | 2 | 1 | 1 | 150 | -40°C to +105°C | 8-Lead SOIC_N | R-8 |
| ADuM1251WARZ | 2 | 1 | 1 | 150 | -40°C to +125°C | 8-Lead SOIC_N | R-8 |
| ADuM1251WARZ-RL7 | 2 | 1 | 1 | 150 | -40°C to +125°C | 8-Lead SOIC_N | R-8 |

¹ Z = RoHS Compliant Part.

² W = Qualified for Automotive Applications.

AUTOMOTIVE PRODUCTS

The [ADuM1250W](#) and [ADuM1251W](#) models are available with controlled manufacturing to support the quality and reliability requirements of automotive applications. Note that these automotive models may have specifications that differ from the commercial models; therefore, designers should review the Specifications section of this data sheet carefully. Only the automotive grade products shown are available for use in automotive applications. Contact your local Analog Devices account representative for specific product ordering information and to obtain the specific Automotive Reliability reports for these models.

NOTES

NOTES

NOTES

I²C refers to a communications protocol originally developed by Philips Semiconductors (now NXP Semiconductors).

©2006–2020 Analog Devices, Inc. All rights reserved. Trademarks and registered trademarks are the property of their respective owners.
D06113-3/20(l)



www.analog.com

Компания «Океан Электроники» предлагает заключение долгосрочных отношений при поставках импортных электронных компонентов на взаимовыгодных условиях!

Наши преимущества:

- Поставка оригинальных импортных электронных компонентов напрямую с производств Америки, Европы и Азии, а так же с крупнейших складов мира;
- Широкая линейка поставок активных и пассивных импортных электронных компонентов (более 30 млн. наименований);
- Поставка сложных, дефицитных, либо снятых с производства позиций;
- Оперативные сроки поставки под заказ (от 5 рабочих дней);
- Экспресс доставка в любую точку России;
- Помощь Конструкторского Отдела и консультации квалифицированных инженеров;
- Техническая поддержка проекта, помощь в подборе аналогов, поставка прототипов;
- Поставка электронных компонентов под контролем ВП;
- Система менеджмента качества сертифицирована по Международному стандарту ISO 9001;
- При необходимости вся продукция военного и аэрокосмического назначения проходит испытания и сертификацию в лаборатории (по согласованию с заказчиком);
- Поставка специализированных компонентов военного и аэрокосмического уровня качества (Xilinx, Altera, Analog Devices, Intersil, Interpoint, Microsemi, Actel, Aeroflex, Peregrine, VPT, Syfer, Eurofarad, Texas Instruments, MS Kennedy, Miteq, Cobham, E2V, MA-COM, Hittite, Mini-Circuits, General Dynamics и др.);

Компания «Океан Электроники» является официальным дистрибьютором и эксклюзивным представителем в России одного из крупнейших производителей разъемов военного и аэрокосмического назначения «JONHON», а так же официальным дистрибьютором и эксклюзивным представителем в России производителя высокотехнологичных и надежных решений для передачи СВЧ сигналов «FORSTAR».



JONHON

«JONHON» (основан в 1970 г.)

Разъемы специального, военного и аэрокосмического назначения:

(Применяются в военной, авиационной, аэрокосмической, морской, железнодорожной, горно- и нефтедобывающей отраслях промышленности)

«FORSTAR» (основан в 1998 г.)

ВЧ соединители, коаксиальные кабели, кабельные сборки и микроволновые компоненты:

(Применяются в телекоммуникациях гражданского и специального назначения, в средствах связи, РЛС, а так же военной, авиационной и аэрокосмической отраслях промышленности).



Телефон: 8 (812) 309-75-97 (многоканальный)

Факс: 8 (812) 320-03-32

Электронная почта: ocean@oceanchips.ru

Web: <http://oceanchips.ru/>

Адрес: 198099, г. Санкт-Петербург, ул. Калинина, д. 2, корп. 4, лит. А