

# Low saturation voltage type 3-pin regulator

## BAOOT / FP series

The BAOOT/ FP series are fixed positive output low drop-out type, 3-pin voltage regulators with positive output.. These regulators are used to provide a stabilized output voltage from a fluctuating DC input voltage.

There are 10 fixed output voltages, as follows:3V, 3.3V, 5V, 6V\*, 7V, 8V, 9V, 10V, 12V and 15V. The maximum current capacity is 1A for each of the above voltages. (Items marked with an asterisk are under development.)

### ●Applications

Constant voltage power supply

### ●Features

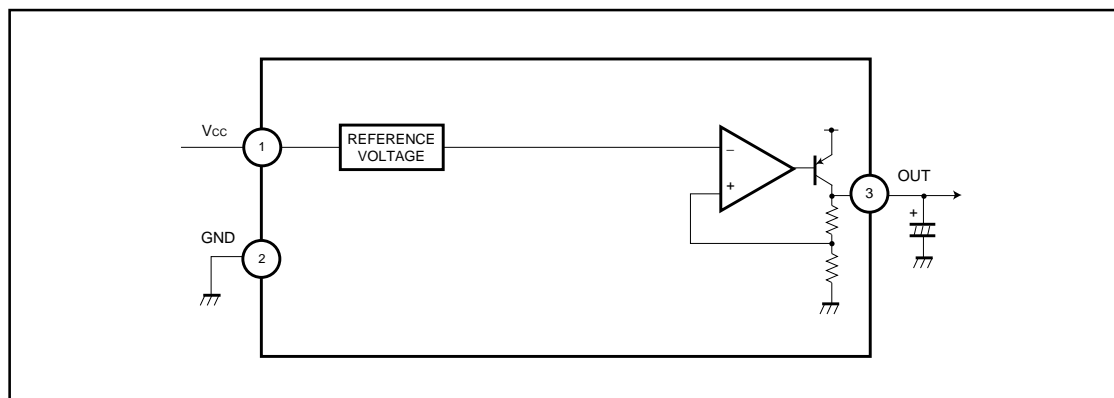
- 1) Built-in overvoltage protection circuit, overcurrent protection circuit and thermal shutdown circuit.
- 2) TO220FP and TO252-3 packages are available to cover a wide range of applications.
- 3) Compatible with the BA17800 series.
- 4) Richly diverse lineup.
- 5) Low minimum I / O voltage differential.

### ●Product codes

| Output voltage (V) | Product No.  | Output voltage (V) | Product No. |
|--------------------|--------------|--------------------|-------------|
| 3.0                | BA03T / FP   | 8.0                | BA08T / FP  |
| 3.3                | BA033T / FP  | 9.0                | BA09T / FP  |
| 5.0                | BA05T / FP   | 10.0               | BA10T / FP  |
| 6.0                | BA06T* / FP* | 12.0               | BA12T / FP  |
| 7.0                | BA07T / FP   | 15.0               | BA15T / FP  |

\* : Under development.

### ●Block diagram



## Regulator ICs

## ●Absolute maximum ratings (Ta = 25°C)

| Parameter             |           | Symbol             | Limits             | Unit |
|-----------------------|-----------|--------------------|--------------------|------|
| Power supply voltage  |           | V <sub>CC</sub>    | 35                 | V    |
| Power dissipation     | TO220FP   | Pd                 | 2000 <sup>*1</sup> | mW   |
|                       | TO252 - 3 |                    | 1000 <sup>*2</sup> |      |
| Operating temperature |           | T <sub>opr</sub>   | -40~85             | °C   |
| Storage temperature   |           | T <sub>stg</sub>   | -55~150            | °C   |
| Peak applied voltage  |           | V <sub>surge</sub> | 50 <sup>*3</sup>   | V    |

\*1 Reduced by 16mW for each increase in Ta of 1°C over 25°C

\*2 Reduced by 8mW for each increase in Ta of 1°C over 25°C

\*3 Voltage application time : 200 msec. or less

## ●Recommended operating conditions

## BA03T / FP

| Parameter      | Symbol          | Min. | Typ. | Max. | Unit |
|----------------|-----------------|------|------|------|------|
| Input voltage  | V <sub>IN</sub> | 4    | -    | 25   | V    |
| Output current | I <sub>o</sub>  | -    | -    | 1    | A    |

## BA033T / FP

| Parameter      | Symbol          | Min. | Typ. | Max. | Unit |
|----------------|-----------------|------|------|------|------|
| Input voltage  | V <sub>IN</sub> | 4.3  | -    | 25   | V    |
| Output current | I <sub>o</sub>  | -    | -    | 1    | A    |

## BA05T / FP

| Parameter      | Symbol          | Min. | Typ. | Max. | Unit |
|----------------|-----------------|------|------|------|------|
| Input voltage  | V <sub>IN</sub> | 6    | -    | 25   | V    |
| Output current | I <sub>o</sub>  | -    | -    | 1    | A    |

## BA06T / FP (under development)

| Parameter      | Symbol          | Min. | Typ. | Max. | Unit |
|----------------|-----------------|------|------|------|------|
| Input voltage  | V <sub>IN</sub> | 7    | -    | 25   | V    |
| Output current | I <sub>o</sub>  | -    | -    | 1    | A    |

## BA07T / FP

| Parameter      | Symbol          | Min. | Typ. | Max. | Unit |
|----------------|-----------------|------|------|------|------|
| Input voltage  | V <sub>IN</sub> | 8    | -    | 25   | V    |
| Output current | I <sub>o</sub>  | -    | -    | 1    | A    |

## BA08T / FP

| Parameter      | Symbol          | Min. | Typ. | Max. | Unit |
|----------------|-----------------|------|------|------|------|
| Input voltage  | V <sub>IN</sub> | 9    | -    | 25   | V    |
| Output current | I <sub>o</sub>  | -    | -    | 1    | A    |

## BA09T / FP

| Parameter      | Symbol          | Min. | Typ. | Max. | Unit |
|----------------|-----------------|------|------|------|------|
| Input voltage  | V <sub>IN</sub> | 10   | -    | 25   | V    |
| Output current | I <sub>o</sub>  | -    | -    | 1    | A    |

## BA10T / FP

| Parameter      | Symbol          | Min. | Typ. | Max. | Unit |
|----------------|-----------------|------|------|------|------|
| Input voltage  | V <sub>IN</sub> | 11   | -    | 25   | V    |
| Output current | I <sub>o</sub>  | -    | -    | 1    | A    |

## BA12T / FP

| Parameter      | Symbol          | Min. | Typ. | Max. | Unit |
|----------------|-----------------|------|------|------|------|
| Input voltage  | V <sub>IN</sub> | 13   | -    | 25   | V    |
| Output current | I <sub>o</sub>  | -    | -    | 1    | A    |

## BA15T / FP

| Parameter      | Symbol          | Min. | Typ. | Max. | Unit |
|----------------|-----------------|------|------|------|------|
| Input voltage  | V <sub>IN</sub> | 16   | -    | 25   | V    |
| Output current | I <sub>o</sub>  | -    | -    | 1    | A    |

## Regulator ICs

## ●Electrical characteristics

BA03T / FP (unless otherwise noted,  $T_a = 25^\circ\text{C}$ ,  $V_{CC} = 8\text{V}$ ,  $I_o = 500\text{mA}$ )

| Parameter                                 | Symbol    | Min. | Typ.       | Max. | Unit                 | Conditions  | Measurement circuit |
|---|-----------|------|------------|------|----------------------|---|---------------------|
| Output voltage                            | $V_{O1}$  | 2.85 | 3.0        | 3.15 | V                    | -   | Fig.1               |
| Input stability                           | Reg.I     | -    | 20         | 100  | mV                   | $V_{IN} = 4 \rightarrow 25\text{V}$                             | Fig.1               |
| Ripple rejection ratio                    | R.R.      | 45   | 55         | -    | dB                   | $e_{IN} = 1V_{rms}$ , $f = 120\text{Hz}$ , $I_o = 100\text{mA}$ | Fig.2               |
| Load regulation                           | Reg.L     | -    | 50         | 150  | mV                   | $I_o = 5\text{mA} \rightarrow 1\text{A}$                        | Fig.1               |
| Temperature coefficient of output voltage | Tcvo      | -    | $\pm 0.02$ | -    | % / $^\circ\text{C}$ | $I_o = 5\text{mA}$ , $T_j = 0 \sim 125^\circ\text{C}$           | Fig.1               |
| Dropout voltage                           | $V_d$     | -    | 0.3        | 0.5  | V                    | $V_{CC} = 0.95V_o$  | Fig.3               |
| Bias current                              | $I_b$     | -    | 2.5        | 5.0  | mA                   | $I_o = 0\text{mA}$  | Fig.4               |
| Peak output current                       | $I_{o-P}$ | 1.0  | 1.5        | -    | A                    | $T_j = 25^\circ\text{C}$  | Fig.1               |
| Output short-circuit current              | $I_{os}$  | -    | 0.4        | -    | A                    | $V_{CC} = 25\text{V}$   | Fig.5               |

BA033T / FP (unless otherwise noted,  $T_a = 25^\circ\text{C}$ ,  $V_{CC} = 8\text{V}$ ,  $I_o = 500\text{mA}$ )

| Parameter                                 | Symbol    | Min. | Typ.       | Max. | Unit                 | Conditions  | Measurement circuit |
|---|-----------|------|------------|------|----------------------|---|---------------------|
| Output voltage                            | $V_{O1}$  | 3.13 | 3.3        | 3.47 | V                    | -   | Fig.1               |
| Input stability                           | Reg.I     | -    | 20         | 100  | mV                   | $V_{IN} = 4.3 \rightarrow 25\text{V}$                           | Fig.1               |
| Ripple rejection ratio                    | R.R.      | 45   | 55         | -    | dB                   | $e_{IN} = 1V_{rms}$ , $f = 120\text{Hz}$ , $I_o = 100\text{mA}$ | Fig.2               |
| Load regulation                           | Reg.L     | -    | 50         | 150  | mV                   | $I_o = 5\text{mA} \rightarrow 1\text{A}$                        | Fig.1               |
| Temperature coefficient of output voltage | Tcvo      | -    | $\pm 0.02$ | -    | % / $^\circ\text{C}$ | $I_o = 5\text{mA}$ , $T_j = 0 \sim 125^\circ\text{C}$           | Fig.1               |
| Dropout voltage                           | $V_d$     | -    | 0.3        | 0.5  | V                    | $V_{CC} = 0.95V_o$  | Fig.3               |
| Bias current                              | $I_b$     | -    | 2.5        | 5.0  | mA                   | $I_o = 0\text{mA}$  | Fig.4               |
| Peak output current                       | $I_{o-P}$ | 1.0  | 1.5        | -    | A                    | $T_j = 25^\circ\text{C}$  | Fig.1               |
| Output short-circuit current              | $I_{os}$  | -    | 0.4        | -    | A                    | $V_{CC} = 25\text{V}$   | Fig.5               |

BA05T / FP (unless otherwise noted,  $T_a = 25^\circ\text{C}$ ,  $V_{CC} = 10\text{V}$ ,  $I_o = 500\text{mA}$ )

| Parameter                                 | Symbol    | Min. | Typ.       | Max. | Unit                 | Conditions  | Measurement circuit |
|---|-----------|------|------------|------|----------------------|---|---------------------|
| Output voltage                            | $V_{O1}$  | 4.75 | 5.0        | 5.25 | V                    | -   | Fig.1               |
| Input stability                           | Reg.I     | -    | 20         | 100  | mV                   | $V_{IN} = 6 \rightarrow 25\text{V}$                             | Fig.1               |
| Ripple rejection ratio                    | R.R.      | 45   | 55         | -    | dB                   | $e_{IN} = 1V_{rms}$ , $f = 120\text{Hz}$ , $I_o = 100\text{mA}$ | Fig.2               |
| Load regulation                           | Reg.L     | -    | 50         | 150  | mV                   | $I_o = 5\text{mA} \rightarrow 1\text{A}$                        | Fig.1               |
| Temperature coefficient of output voltage | Tcvo      | -    | $\pm 0.02$ | -    | % / $^\circ\text{C}$ | $I_o = 5\text{mA}$ , $T_j = 0 \sim 125^\circ\text{C}$           | Fig.1               |
| Dropout voltage                           | $V_d$     | -    | 0.3        | 0.5  | V                    | $V_{CC} = 4.75\text{V}$   | Fig.3               |
| Bias current                              | $I_b$     | -    | 2.5        | 5.0  | mA                   | $I_o = 0\text{mA}$  | Fig.4               |
| Peak output current                       | $I_{o-P}$ | 1.0  | 1.5        | -    | A                    | $T_j = 25^\circ\text{C}$  | Fig.1               |
| Output short-circuit current              | $I_{os}$  | -    | 0.4        | -    | A                    | $V_{CC} = 25\text{V}$   | Fig.5               |

## Regulator ICs

BA06T / FP (unless otherwise noted, Ta = 25°C, Vcc = 11V, Io = 500mA) (under development)

| Parameter                                 | Symbol           | Min. | Typ.  | Max. | Unit   | Conditions  | Measurement circuit |
|---|------------------|------|-------|------|--------|---|---------------------|
| Output voltage                            | V <sub>O1</sub>  | 5.7  | 6.0   | 6.3  | V      | -   | Fig.1               |
| Input stability                           | Reg.I            | -    | 20    | 100  | mV     | V <sub>IN</sub> = 7→25V   | Fig.1               |
| Ripple rejection ratio                    | R.R.             | 45   | 55    | -    | dB     | e <sub>IN</sub> = 1V <sub>rms</sub> , f = 120Hz, I <sub>o</sub> = 100mA | Fig.2               |
| Load regulation                           | Reg.L            | -    | 50    | 150  | mV     | I <sub>o</sub> = 5mA→1A   | Fig.1               |
| Temperature coefficient of output voltage | Tcvo             | -    | ±0.02 | -    | % / °C | I <sub>o</sub> = 5mA, T <sub>j</sub> = 0125°C                           | Fig.1               |
| Dropout voltage                           | V <sub>d</sub>   | -    | 0.3   | 0.5  | V      | V <sub>CC</sub> = 0.95V   | Fig.3               |
| Bias current                              | I <sub>b</sub>   | -    | 2.5   | 5.0  | mA     | I <sub>o</sub> = 0mA  | Fig.4               |
| Peak output current                       | I <sub>o-P</sub> | 1.0  | 1.5   | -    | A      | T <sub>j</sub> = 25°C   | Fig.1               |
| Output short-circuit current              | I <sub>os</sub>  | -    | 0.4   | -    | A      | V <sub>CC</sub> = 25V   | Fig.5               |

BA07T / FP (unless otherwise noted, Ta = 25°C, Vcc = 12V, Io = 500mA)

| Parameter                                 | Symbol           | Min. | Typ.  | Max. | Unit   | Conditions  | Measurement circuit |
|---|------------------|------|-------|------|--------|---|---------------------|
| Output voltage                            | V <sub>O1</sub>  | 6.65 | 7.0   | 7.35 | V      | -   | Fig.1               |
| Input stability                           | Reg.I            | -    | 20    | 100  | mV     | V <sub>IN</sub> = 8→25V   | Fig.1               |
| Ripple rejection ratio                    | R.R.             | 45   | 55    | -    | dB     | e <sub>IN</sub> = 1V <sub>rms</sub> , f = 120Hz, I <sub>o</sub> = 100mA | Fig.2               |
| Load regulation                           | Reg.L            | -    | 50    | 150  | mV     | I <sub>o</sub> = 5mA→1A   | Fig.1               |
| Temperature coefficient of output voltage | Tcvo             | -    | ±0.02 | -    | % / °C | I <sub>o</sub> = 5mA, T <sub>j</sub> = 0~125°C                          | Fig.1               |
| Dropout voltage                           | V <sub>d</sub>   | -    | 0.3   | 0.5  | V      | V <sub>CC</sub> = 0.95V <sub>o</sub>                                    | Fig.3               |
| Bias current                              | I <sub>b</sub>   | -    | 2.5   | 5.0  | mA     | I <sub>o</sub> = 0mA  | Fig.4               |
| Peak output current                       | I <sub>o-P</sub> | 1.0  | 1.5   | -    | A      | T <sub>j</sub> = 25°C   | Fig.1               |
| Output short-circuit current              | I <sub>os</sub>  | -    | 0.4   | -    | A      | V <sub>CC</sub> = 25V   | Fig.5               |

BA08T / FP (unless otherwise noted, Ta = 25°C, Vcc = 13V, Io = 500mA)

| Parameter                                 | Symbol           | Min. | Typ.  | Max. | Unit   | Conditions  | Measurement Circuit |
|---|------------------|------|-------|------|--------|---|---------------------|
| Output voltage                            | V <sub>O1</sub>  | 7.6  | 8.0   | 8.4  | V      | -   | Fig.1               |
| Input stability                           | Reg.I            | -    | 20    | 100  | mV     | V <sub>IN</sub> = 9→25V   | Fig.1               |
| Ripple rejection ratio                    | R.R.             | 45   | 55    | -    | dB     | e <sub>IN</sub> = 1V <sub>rms</sub> , f = 120Hz, I <sub>o</sub> = 100mA | Fig.2               |
| Load regulation                           | Reg.L            | -    | 50    | 150  | mV     | I <sub>o</sub> = 5mA→1A   | Fig.1               |
| Temperature coefficient of output voltage | Tcvo             | -    | ±0.02 | -    | % / °C | I <sub>o</sub> = 5mA, T <sub>j</sub> = 0~125°C                          | Fig.1               |
| Dropout voltage                           | V <sub>d</sub>   | -    | 0.3   | 0.5  | V      | V <sub>CC</sub> = 0.95V <sub>o</sub>                                    | Fig.3               |
| Bias current                              | I <sub>b</sub>   | -    | 2.5   | 5.0  | mA     | I <sub>o</sub> = 0mA  | Fig.4               |
| Peak output current                       | I <sub>o-P</sub> | 1.0  | 1.5   | -    | A      | T <sub>j</sub> = 25°C   | Fig.1               |
| Output short-circuit current              | I <sub>os</sub>  | -    | 0.4   | -    | A      | V <sub>CC</sub> = 25V   | Fig.5               |

## Regulator ICs

BA09T / FP (unless otherwise noted, Ta = 25°C, Vcc = 14V, Io = 500mA) (under development)

| Parameter                                 | Symbol           | Min. | Typ.  | Max. | Unit   | Conditions  | Measurement circuit |
|---|------------------|------|-------|------|--------|---|---------------------|
| Output voltage                            | V <sub>O1</sub>  | 8.45 | 9.0   | 9.45 | V      | -   | Fig.1               |
| Input stability                           | Reg.I            | -    | 20    | 100  | mV     | V <sub>IN</sub> = 10→25V  | Fig.1               |
| Ripple rejection ratio                    | R.R.             | 45   | 55    | -    | dB     | e <sub>IN</sub> = 1V <sub>rms</sub> , f = 120Hz, I <sub>o</sub> = 100mA | Fig.2               |
| Load regulation                           | Reg.L            | -    | 50    | 150  | mV     | I <sub>o</sub> = 5mA→1A   | Fig.1               |
| Temperature coefficient of output voltage | Tcvo             | -    | ±0.02 | -    | % / °C | I <sub>o</sub> = 5mA, T <sub>j</sub> = 0~125°C                          | Fig.1               |
| Dropout voltage                           | V <sub>d</sub>   | -    | 0.3   | 0.5  | V      | V <sub>CC</sub> = 0.95V <sub>o</sub>                                    | Fig.3               |
| Bias current                              | I <sub>b</sub>   | -    | 2.5   | 5.0  | mA     | I <sub>o</sub> = 0mA  | Fig.4               |
| Peak output current                       | I <sub>o-P</sub> | 1.0  | 1.5   | -    | A      | T <sub>j</sub> = 25°C   | Fig.1               |
| Output short-circuit current              | I <sub>os</sub>  | -    | 0.4   | -    | A      | V <sub>CC</sub> = 25V   | Fig.5               |

BA10T / FP (unless otherwise noted, Ta = 25°C, Vcc = 15V, Io = 500mA)

| Parameter                                 | Symbol           | Min. | Typ.  | Max. | Unit   | Conditions  | Measurement circuit |
|---|------------------|------|-------|------|--------|---|---------------------|
| Output voltage                            | V <sub>O1</sub>  | 9.5  | 10    | 10.5 | V      | -   | Fig.1               |
| Input stability                           | Reg.I            | -    | 20    | 100  | mV     | V <sub>IN</sub> = 11→25V  | Fig.1               |
| Ripple rejection ratio                    | R.R.             | 45   | 55    | -    | dB     | e <sub>IN</sub> = 1V <sub>rms</sub> , f = 120Hz, I <sub>o</sub> = 100mA | Fig.2               |
| Load regulation                           | Reg.L            | -    | 50    | 150  | mV     | I <sub>o</sub> = 5mA→1A   | Fig.1               |
| Temperature coefficient of output voltage | Tcvo             | -    | ±0.02 | -    | % / °C | I <sub>o</sub> = 5mA, T <sub>j</sub> = 0~125°C                          | Fig.1               |
| Dropout voltage                           | V <sub>d</sub>   | -    | 0.3   | 0.5  | V      | V <sub>CC</sub> = 0.95V <sub>o</sub>                                    | Fig.3               |
| Bias current                              | I <sub>b</sub>   | -    | 2.5   | 5.0  | mA     | I <sub>o</sub> = 0mA  | Fig.4               |
| Peak output current                       | I <sub>o-P</sub> | 1.0  | 1.5   | -    | A      | T <sub>j</sub> = 25°C   | Fig.1               |
| Output short-circuit current              | I <sub>os</sub>  | -    | 0.4   | -    | A      | V <sub>CC</sub> = 25V   | Fig.5               |

BA12T / FP (unless otherwise noted, Ta = 25°C, Vcc = 17V, Io = 500mA)

| Parameter                                 | Symbol           | Min. | Typ.  | Max. | Unit   | Conditions  | Measurement circuit |
|---|------------------|------|-------|------|--------|---|---------------------|
| Output voltage                            | V <sub>O1</sub>  | 11.4 | 12    | 12.6 | V      | -   | Fig.1               |
| Input stability                           | Reg.I            | -    | 20    | 100  | mV     | V <sub>IN</sub> = 13→25V  | Fig.1               |
| Ripple rejection ratio                    | R.R.             | 45   | 55    | -    | dB     | e <sub>IN</sub> = 1V <sub>rms</sub> , f = 120Hz, I <sub>o</sub> = 100mA | Fig.2               |
| Load regulation                           | Reg.L            | -    | 50    | 150  | mV     | I <sub>o</sub> = 5mA→1A   | Fig.1               |
| Temperature coefficient of output voltage | Tcvo             | -    | ±0.02 | -    | % / °C | I <sub>o</sub> = 5mA, T <sub>j</sub> = 0~125°C                          | Fig.1               |
| Dropout voltage                           | V <sub>d</sub>   | -    | 0.3   | 0.5  | V      | V <sub>CC</sub> = 0.95V <sub>o</sub>                                    | Fig.3               |
| Bias current                              | I <sub>b</sub>   | -    | 2.5   | 5.0  | mA     | I <sub>o</sub> = 0mA  | Fig.4               |
| Peak output current                       | I <sub>o-P</sub> | 1.0  | 1.5   | -    | A      | T <sub>j</sub> = 25°C   | Fig.1               |
| Output short-circuit current              | I <sub>os</sub>  | -    | 0.4   | -    | A      | V <sub>CC</sub> = 25V   | Fig.5               |

## Regulator ICs

BA15T / FP (unless otherwise noted,  $T_a = 25^\circ\text{C}$ ,  $V_{CC} = 20\text{V}$ ,  $I_o = 500\text{mA}$ )

| Parameter                                 | Symbol    | Min.  | Typ.       | Max.  | Unit                 | Conditions  | Measurement circuit |
|---|-----------|-------|------------|-------|----------------------|---|---------------------|
| Output voltage                            | $V_{O1}$  | 14.25 | 15         | 15.75 | V                    | -   | Fig.1               |
| Input stability                           | Reg.I     | -     | 20         | 100   | mV                   | $V_{IN} = 6 \rightarrow 25\text{V}$                             | Fig.1               |
| Ripple rejection ratio                    | R.R.      | 45    | 55         | -     | dB                   | $e_{IN} = 1V_{rms}$ , $f = 120\text{Hz}$ , $I_o = 100\text{mA}$ | Fig.2               |
| Load regulation                           | Reg.L     | -     | 90         | 200   | mV                   | $I_o = 5\text{mA} \rightarrow 1\text{A}$                        | Fig.1               |
| Temperature coefficient of output voltage | $T_{cvo}$ | -     | $\pm 0.02$ | -     | % / $^\circ\text{C}$ | $I_o = 5\text{mA}$ , $T_j = 0 \sim 125^\circ\text{C}$           | Fig.1               |
| Dropout voltage                           | $V_d$     | -     | 0.3        | 0.5   | V                    | $V_{CC} = 0.95V_o$  | Fig.3               |
| Bias current                              | $I_b$     | -     | 2.5        | 5.0   | mA                   | $I_o = 0\text{mA}$  | Fig.4               |
| Peak output current                       | $I_{o-P}$ | 1.0   | 1.5        | -     | A                    | $T_j = 25^\circ\text{C}$  | Fig.1               |
| Output short-circuit current              | $I_{os}$  | -     | 0.4        | -     | A                    | $V_{CC} = 30\text{V}$   | Fig.5               |

Regulator ICs

● Measurement circuits

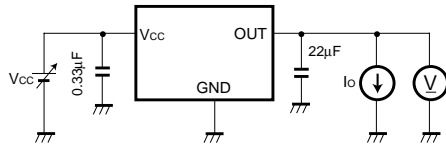
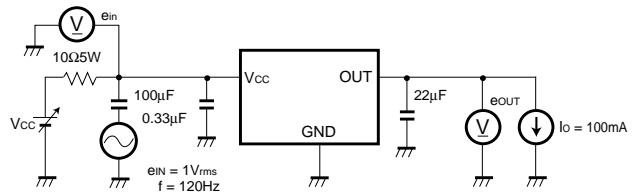


Fig. 1 Measurement circuit for output voltage, input stability, load regulation, temperature coefficient of output voltage



$$\text{Ripple rejection ratio R.R.} = 20 \log \left( \frac{e_{IN}}{e_{OUT}} \right)$$

Fig. 2 Measurement circuit for ripple rejection ratio

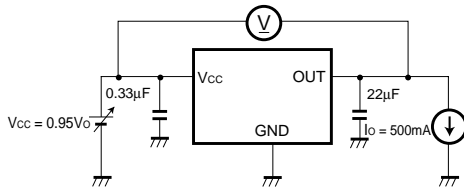


Fig. 3 Measurement circuit for minimum I/O voltage differential

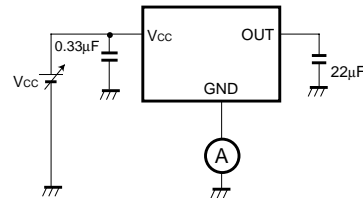


Fig. 4 Measurement circuit for bias current

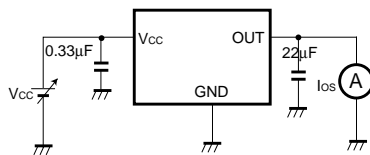


Fig. 5 Measurement circuit for output short-circuit current

## Regulator ICs

## ●Operation notes

## (1) Operating power supply voltage

When operating within the normal voltage range and within the ambient operating temperature range, most circuit functions are guaranteed.

The rated values cannot be guaranteed for the electrical characteristics, but there are no sudden changes of the characteristics within these ranges.

## (2) Power dissipation

Heat attenuation characteristics are noted on a separate page and can be used as a guide in judging power dissipation.

If these ICs are used in such a way that the allowable power dissipation level is exceeded, an increase in the chip temperature could cause a reduction in the current capability or could otherwise adversely affect the performance of the IC. Make sure a sufficient margin is allowed so that the allowable power dissipation value is not exceeded.

## (3) Output oscillation prevention and bypass capacitor

Be sure to connect a capacitor between the output pin and GND to prevent oscillation. Since fluctuations in the value of the capacitor due to temperature changes may cause oscillations, a tantalum electrolytic capacitor with a small internal series resistance (ESR) is recommended.

A 22 $\mu$ F capacitor is recommended; however, be aware that if an extremely large capacitance is used (1000 $\mu$ F or greater), then oscillations may occur at low frequencies. Therefore, be sure to perform the appropriate verifications before selecting the capacitor.

Also, we recommend connecting a 0.33 $\mu$ F bypass capacitor as close as possible between the input pin and GND.

## (4) Overcurrent protection circuit

An overcurrent protection circuit is built into the outputs, to prevent destruction of the IC in the event the load is

shorted.

This protection circuit limits the current in the shape of a '7'. This circuit is designed with a high margin, so that that current is restricted and latching is prevented, even if a high-capacitance capacitor causes a large amount of current to temporarily flow through the IC.

However, these protection circuits are only good for preventing damage from sudden accidents and should not be used for continuous protection (for instance, clamping at an output of 1V<sub>F</sub> or greater; below 1V<sub>F</sub>, the short mode circuit operates). Note that the capacitor has negative temperature characteristics, and the design should take this into consideration.

## (5) Thermal overload circuit

A built-in thermal overload circuit prevents damage from overheating. When the thermal circuit is activated, the outputs are turned OFF. When the temperature drops back to a constant level, the circuit is restored.

(6) Internal circuits could be damaged if there are modes in which the electric potential of the application's input (V<sub>CC</sub>) and GND are the opposite of the electric potential normally used by each of the outputs. Use of a diode or other such bypass path is recommended.

(7) Although the manufacture of this product includes rigorous quality assurance procedures, the product may be damaged if absolute maximum ratings for voltage or operating temperature are exceeded. If damage has occurred, special modes (such as short circuit mode or open circuit mode) cannot be specified. If it is possible that such special modes may be needed, please consider using a fuse or some other mechanical safety measure.

(8) When used within a strong magnetic field, be aware that the possibility of malfunction exists.



Regulator ICs

●Electrical characteristic curves

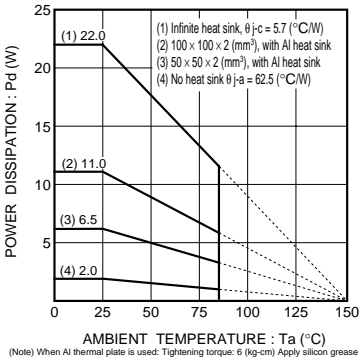


Fig. 6 Ta - power dissipation characteristics (TO220FP)

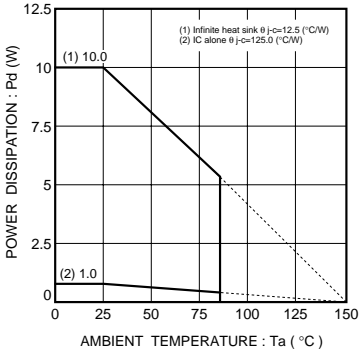


Fig. 7 Ta - power dissipation characteristics (TO 252-3)

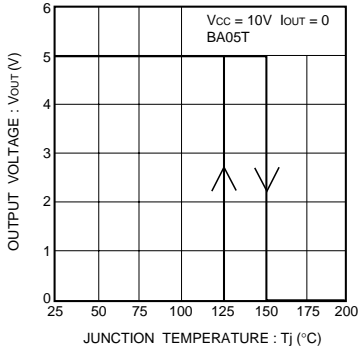


Fig. 8 Thermal cutoff circuit characteristics

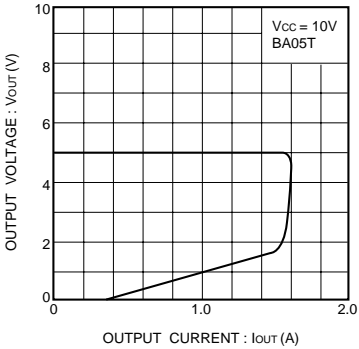


Fig. 9 Current limit characteristics

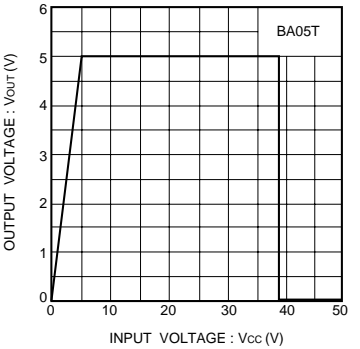
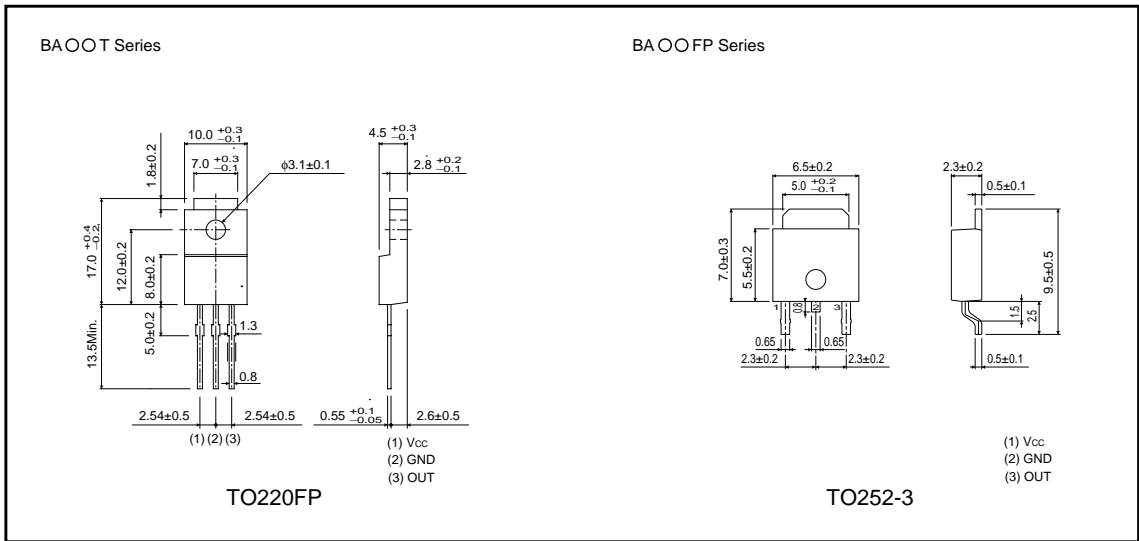


Fig. 10 Over voltage protection characteristics

●External dimensions (Units : mm)



Компания «Океан Электроники» предлагает заключение долгосрочных отношений при поставках импортных электронных компонентов на взаимовыгодных условиях!

Наши преимущества:

- Поставка оригинальных импортных электронных компонентов напрямую с производств Америки, Европы и Азии, а так же с крупнейших складов мира;
- Широкая линейка поставок активных и пассивных импортных электронных компонентов (более 30 млн. наименований);
- Поставка сложных, дефицитных, либо снятых с производства позиций;
- Оперативные сроки поставки под заказ (от 5 рабочих дней);
- Экспресс доставка в любую точку России;
- Помощь Конструкторского Отдела и консультации квалифицированных инженеров;
- Техническая поддержка проекта, помощь в подборе аналогов, поставка прототипов;
- Поставка электронных компонентов под контролем ВП;
- Система менеджмента качества сертифицирована по Международному стандарту ISO 9001;
- При необходимости вся продукция военного и аэрокосмического назначения проходит испытания и сертификацию в лаборатории (по согласованию с заказчиком);
- Поставка специализированных компонентов военного и аэрокосмического уровня качества (Xilinx, Altera, Analog Devices, Intersil, Interpoint, Microsemi, Actel, Aeroflex, Peregrine, VPT, Syfer, Eurofarad, Texas Instruments, MS Kennedy, Miteq, Cobham, E2V, MA-COM, Hittite, Mini-Circuits, General Dynamics и др.);

Компания «Океан Электроники» является официальным дистрибьютором и эксклюзивным представителем в России одного из крупнейших производителей разъемов военного и аэрокосмического назначения «JONHON», а так же официальным дистрибьютором и эксклюзивным представителем в России производителя высокотехнологичных и надежных решений для передачи СВЧ сигналов «FORSTAR».



## JONHON

«JONHON» (основан в 1970 г.)

Разъемы специального, военного и аэрокосмического назначения:

(Применяются в военной, авиационной, аэрокосмической, морской, железнодорожной, горно- и нефтедобывающей отраслях промышленности)

«FORSTAR» (основан в 1998 г.)

ВЧ соединители, коаксиальные кабели, кабельные сборки и микроволновые компоненты:

(Применяются в телекоммуникациях гражданского и специального назначения, в средствах связи, РЛС, а так же военной, авиационной и аэрокосмической отраслях промышленности).



Телефон: 8 (812) 309-75-97 (многоканальный)

Факс: 8 (812) 320-03-32

Электронная почта: [ocean@oceanchips.ru](mailto:ocean@oceanchips.ru)

Web: <http://oceanchips.ru/>

Адрес: 198099, г. Санкт-Петербург, ул. Калинина, д. 2, корп. 4, лит. А