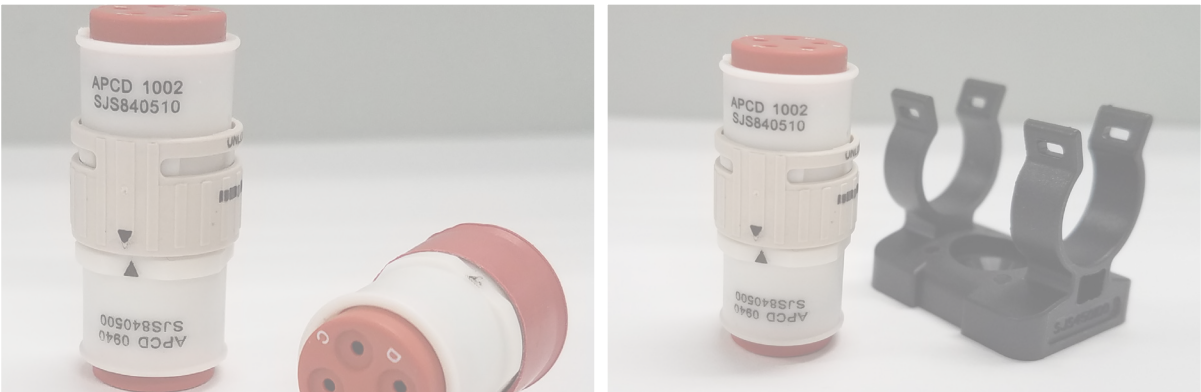


Amphenol Pcd



LUMINUS

Description:

Luminus are lightweight, cost-effective connectors that are highly reliable and simple to use. With multiple configurations and arrangements available, a solution can be tailored to suit your application's exact requirements. Proven solutions can be found in single engine general aviation, multiple-engine business and passenger jets, and high performance rotary aircraft. Ideal where space is limited, these innovative, "scoop-proof" connectors feature a locking mechanism that ensures stability, are suitable for blind-mating, and are RoHS compliant.

Features and Benefits:

1/4 turn bayonet style connection; push and snap connection - Makes wire installation and maintenance easy and efficient; positive "click" when locked

Interfacial and Triple-Barrier Seal - Enables environmental sealing (IP 67 rating)

Multiple Keying Positions - Ensures proper connectivity

Multiple Configurations and Accessories - Tailored solutions to meet application needs

Contacts - AS39029 MIL Spec contacts for broad application compatibility. Stamped & Formed available as lower cost option

Visual markings - Visual aid for easy assembly

Rugged Polyamide Housings; 500 mating cycles - Durability

Blind-Mate Connection - Enables simple, blind mating; easy assembly

D160, M81714, FAR25 Compliance-Meets demanding military-aerospace environmental conditions

Typical Applications:

- Aerospace Lighting
- Power & Signal Distribution
- Cabin Service Systems
- Actuation & Sensors



LUMINUS

Shell Size

05 (max dia: 0.318)



2, size 22, Twist & Lock



3, size 22, Twist & Lock

10 (max dia: 0.630)



9: 4, size 16; 5 size 22 Twist & Lock



10: 4, size 16; 6 size 22 Twist & Lock

06 (max dia: 0.390)



1, size 16 & 20, Push & Pull

11 (max dia: 0.700)



3, size 12, Twist & Lock

07 (max dia: 0.448)



3, size 16, Push & Pull



6, size 22, Twist & Lock

14 (max dia: 0.875)



8, size 22, Twist & Lock



25, size 22, Twist & Lock



1, size 12, Push & Pull

08 (max dia: 0.528)



4, size 16, Twist & Lock



5, size 22, Twist & Lock



9: 1, size 16; 8 size 22 Twist & Lock



9, size 22 Twist & Lock



3, size 16 Twist & Lock



3, size 20 Push & Pull

Materials and Specifications

| | Push & Pull | Twist & Lock | |
|---|--|--|--------------------------------------|
| Materials | Insulator Body: Polyamide 6/6 (Nylon) | Insulator Body: Polyamide 6/6 (Nylon) | |
| | Grommet: Silicone Rubber | Grommet & Face Seal: Silicone Rubber | |
| | Contact Retainer: Stainless Steel | Contact Retainer: Stainless Steel | |
| | Contacts: Copper Alloy Gold Plated | | |
| Temperature Range | -65°C to 125°C | -65°C to 125°C | |
| Temperature Life | 150 hours @ 95°C | 500 hours @ 85°C | |
| Insulation Resistance | 1500VAC, 60hz @ Sea Level | 5000 MΩ Min. @ 500 VDC | |
| Dielectric Withstanding | 1500 VAC, 60 Hz @ Sea Level, 1ma | 1500 VAC, 60 Hz @ Sea Level, 1ma | |
| | 300 VAC, 60 Hz @ 70,000 ft, 2ma | 300 VAC, 60 Hz @ 70,000 ft, 2ma | |
| Durability | 50 mating cycles | 500 mating cycles | |
| Altitude Immersion | 5% salt solution, 55k ft, DWV 1500VA | 5% salt solution, 75k feet | |
| | | 5000Mohms @ 1500 VAC, sea level | |
| | | 5000Mohms @ 300 VAC, 70k ft | |
| | | 5000Mohms @ 300 VAC, 100k ft | |
| Temperature Cycling | 5(1) Hour Cycles: 0 C to 95 C | 5(1) Hour Cycles: -65°C to 125°C | |
| Thermal Shock | 5(1) Hour Cycles: 0 C to 95 C | -65°C to 200°C | |
| Vibration | Contact Factory | 30G Sinusoidal; 43.96G Random | |
| Shock | | 300G, 3msec, Half-Sine | |
| Salt Spray | | 5% Salt Spray @ 95°C for 48 Hours | |
| Humidity | | 10 Days @ 25°C to 65°C, 90% - 95% RH | 10 Days @ 25°C to 65°C, 90% - 95% RH |
| Fluid Immersion | | Lubricating Oil per Mil-Prf-7808 | |
| | | Cleaning Compound per Mil-Prf-87937, Alkaline Base | |
| | | Isopropyl Alcohol & Mineral Spirit Solution | |
| | Skydrol Hydraulic Fluid | Skydrol Hydraulic Fluid | |
| | Hydraulic Fluids per MIL-PRF-83282 MIL-PRF-87257 | Hydraulic Fluids per MIL-PRF-83282 MIL-PRF-87257 | |
| | Ethylene Glycol | Ethylene Glycol | |
| | Propylene Glycol | Propylene Glycol | |
| Aviation Jet A | Aviation Jet A | | |
| Seal Rating | IP67 | IP67 | |
| Flammability | UL94, V0. | UL94, V0. | |
| | | DOTG section 26.6.2 & 26.6.3 | |
| | | FAR Part 25 App F Part I | |
| RoHS & REACH Compliance | Yes | Yes | |
| Contact Insertion & Removal Force <small>(not to exceed)</small> | - | size 22 | 10 lbs |
| | | size 20 | 10 lbs |
| | | size 16 | 13 lbs |
| | | size 12 | 15 lbs |
| Contact Retention <small>(minimum)</small> | - | size 22 | 10 lbs |
| | | size 20 | 15 lbs |
| | | size 16 | 25 lbs |
| | | size 12 | 30 lbs |

Part Numbering (Twist & Lock)



| # of Positions | Contact Size | Shell Size | Key | Color | Plug P/N | Inline Receptacle P/N | Circular Receptacle P/N | Square Receptacle PN | Jamnut PCB Mount | Oval Receptacle PN | Jam Nut Rear Mount Receptacle PN |
|----------------|--------------|------------|-----|--------|------------|-----------------------|-------------------------|----------------------|------------------|--------------------|----------------------------------|
| 1 | Quadrax | 8 | - | - | SJS801110 | SJS801120 | - | SJS801130* | SJS801160* | SJS801170* | SJS801190* |
| 2 | 22D | 5 | - | black | SJS830250 | SJS830270 | - | - | - | SJS502170 | SJS502190 |
| 3 | 12 | 11 | - | black | SJS103110* | SJS103120* | - | - | - | - | - |
| 3 | 22D | 5 | - | black | SJS830210 | SJS830230 | - | - | - | SJS503170 | SJ503190 |
| 3 | 20 | 7 | - | white | SJS862300 | SJS862400 | - | SJS862450 | - | - | - |
| 3 | 16 | 8 | A | white | SJS840310 | SJS840300 | SJS840320 | SJS803730 | - | - | - |
| 3 | 16 | 8 | B | black | SJS840340 | SJS840350 | SJS840330 | SJS803130 | - | - | - |
| 3 | 12 | 10 | - | - | SJS003110 | SJS003120 | - | - | - | - | - |
| 3 | 12 | 11 | - | black | SJS103110 | SJS103120 | - | - | - | - | - |
| 4 | 16 | 8 | A | white | SJS840410 | SJS840400 | SJS840420 | SJS804730 | SJS840760 | - | SJS840790 |
| 4 | 16 | 8 | B | white | SJS840440 | SJS840450 | SJS840430 | - | - | - | - |
| 4 | 20 | 7 | - | black | SJS704110 | SJS704120 | - | - | - | - | - |
| 5 | 22D | 8 | - | white | SJS860510 | SJS860500 | SJS860520 | SJS805730 | - | - | - |
| 5 | 22D | 8 | - | white | SJS870510 | - | SJS870520 | - | - | - | - |
| 6 | 22D | 7 | - | black | SJS861700 | SJS861800 | - | - | SJS706160 | - | - |
| 8 | 22D | 7 | A | black | SJS830100 | SJS830200 | - | SJS830220 | SJS708160 | SJS708170 | SJS708190 |
| 8 | 22D | 7 | B | green | SJS830101 | SJS830201 | - | SJS830221 | - | - | - |
| 8 | 22D | 7 | C | yellow | SJS830102 | SJS830202 | - | SJS830222 | - | - | - |
| 9 | 22D | 8 | - | black | SJS862100 | SJS862200 | - | SJS809130 | - | - | - |
| 12 | 22D | 8 | - | white | SJS861300 | SJS861400 | - | SJS812730 | SJS812760* | - | - |
| 12 | 22D | 11 | A | black | SJS112110 | SJS112120 | - | - | SJS112160 | - | - |
| 12 | 22D | 11 | B | - | SJS112210 | SJS112220 | - | - | SJS112260 | - | - |
| 12 | 22D | 11 | C | - | SJS112310 | SJS112320 | - | - | SJS112360 | - | - |
| 12 | 22D | 11 | D | - | SJS112410 | SJS112420 | - | - | SJS112460 | - | - |
| 25 | 22D | 14 | A | black | SJS425110 | SJS425120 | - | - | SJS425160 | - | - |
| 25 | 22D | 14 | B | - | SJS425210 | SJS425220 | - | - | SJS425260 | - | - |
| 25 | 22D | 14 | C | - | SJS425310 | SJS425320 | - | - | SJS425360 | - | - |
| 25 | 22D | 14 | D | - | SJS425410 | SJS425420 | - | - | SJS425460 | - | - |
| 12 | 20 | 14 | - | - | SJS412110 | SJS412120 | - | - | - | - | - |
| 5 | 12 (3) | 11 | - | black | SJS1AE110* | SJ1AE120* | - | - | - | - | - |
| | 22 (2) | | | | | | | | | | |
| 9 | 16 | 8 | - | white | SJS860100 | SJS860200 | - | - | - | - | - |
| | 22D | | | | | | | | | | |
| 9 | 16 | 10 | - | white | SJS860910 | SJS860900 | - | SJS0AA730 | - | - | - |
| | 22D | | | | | | | - | - | - | |
| 10 | 16 | 10 | - | white | SJS861100 | SJS861200 | - | SJS0A8730* | SJS0BB770* | - | - |
| | 22D | | | | | | | SJS0AB730 | SJS0AB770 | - | - |

Note: Above part numbers come without contacts; inquire within for "with contacts" part numbers
 * SJS870510 uses pin contacts; SJS870520 uses socket contacts

*Available at extended lead time.

LUMINUS

Part Numbering (Push & Pull)



| Contact Size | Contact Qty | Shell Size | Key | Color | Plug P/N | Receptacle |
|--------------|-------------|------------|-----|--------|-----------|------------|
| 12 | 1 | 7 | n/a | blue | SJS512100 | SJS512200 |
| 12 | 1 | 7 | n/a | red | SJS512110 | SJS512210 |
| 16 | 1 | 6 | n/a | blue | SJS716100 | SJS716200 |
| 16 | 1 | 6 | n/a | red | SJS716110 | SJS716210 |
| 20 | 1 | 6 | n/a | green | SJS720100 | SJS720200 |
| 20 | 1 | 6 | n/a | yellow | SJS720110 | SJS720210 |
| 16 | 3 | 11 | A | red | SJS816100 | SJS816200 |
| 16 | 3 | 11 | B | white | SJS816110 | SJS816210 |
| 16 | 3 | 11 | C | blue | SJS816120 | SJS816220 |
| 20 | 3 | 8 | A | red | SJS820100 | SJS820200 |
| 20 | 3 | 8 | B | white | SJS820110 | SJS820210 |
| 20 | 3 | 8 | C | blue | SJS820120 | SJS820220 |

Part Numbering (Accessories)



| Shell Size | Strain Relief Single | Strain Relief Single 90° | Strain Relief Single 45° | Double Strain Relief | Double Side Tape Mount Cradle | Screw Mount Cradle | Tube Mount Cradle | Single Side Tape Tube Mount Cradle | Double Side Tape Tube Mount Cradle | Dummy Flanges | Hard Protective Caps |
|------------|----------------------|--------------------------|--------------------------|----------------------|-------------------------------|--------------------|-------------------|------------------------------------|------------------------------------|---------------|----------------------|
| 5 | SJSA55000 | SJSAA5100 | SJSAA5200 | SJSA56000 | SJS257000 | SJS257100 | SJSA5V000 | SJS5AV010 | SJS5AV020 | - | SJSA5B000 |
| 7 | SJS450350 | SJSA75100 | SJSA75200 | SJSA76000 | SJS883000 | SJS450250 | SJSA7V000 | SJSA7V010 | SJSA7V020 | SJS830220D | SJSA7B000 |
| 8 | SJSA85000 | SJSA85100 | SJSA85200 | SJSA86000 | SJS445000 | SJS450100 | SJSA8V000 | SJSA8V010 | SJSA8V020 | - | SJSA8B000 |
| 10 | SJSA05000 | SJSA05100 | SJSA05200 | SJSA06000 | SJS991000 | - | SJSA0V000 | SJSA0V010 | SJSA0V020 | SJS0AA730D | SJSA0B000 |

Contact Information: Machined and Stamped & Formed

Now with Quadrax & Fiber Optic (M29504) capability

| | |
|-----------------|----------------------------------|
| Shipping Format | Loose (Tape & reel not included) |
| Mating Cycles | 500 |
| Materials | Contact Body: Copper Alloy |
| | Hood Stainless Steel |
| | Sleeve Stainless Steel |

| | |
|-----------------|--|
| Dimensions | AS39029 Compatible |
| Plating Options | Machined Gold plate 50 micro-inches min over |
| | Stamped & Formed Selective gold plate over engagement area 3-5 micro-inches thick over nickel under plate |

Contact Matrix

| Contact Size | Contact Style | Available | | Contact P/N | | QPL Part No. (Machined Only) | Contact Retention | Crimp Tensile Strength |
|--------------|---------------|-----------|------------|-------------|------------------|---------------------------------|----------------------------------|------------------------|
| | | Push-Pull | Twist-Lock | Machined | Stamped & Formed | | | |
| 12 | Pin | Yes | Yes | CNP058365 | SCP058365 | M39029/58-365 | .012" [0,30mm] @ 30lbf [133N] | 100lbf [445N] |
| | Socket | No | Yes | CNS057359 | SCS057359 | M39029/57-359 | | |
| | Socket-L | Yes | No | CNS056353 | n/a | M39029/56-353 | | |
| 16 | Pin | Yes | Yes | CNP058364 | SCP058364 | M39029/58-364 | .012" [0,30mm] @ 25lbf [111N] | 40lbf [180N] |
| | Socket | No | Yes | CNS057358 | SCS057358 | M39029/57-358 | | |
| | Socket-L | Yes | No | CNS056352 | n/a | M39029/56-352 | | |
| 20 | Pin | Yes | Yes | CNP058363 | SCP058363 | M39029/58-363 | .012" [0,30mm] @ 20lbf [90N] | 20lbf [90N] |
| | Socket | No | Yes | CNS057357 | SCS057357 | M39029/57-357 | | |
| | Socket-L | Yes | No | CNS056351 | n/a | M39029/56-351 | | |
| 22D | Pin | No | Yes | CNP058360 | n/a | M39029/58-360 | .012" [0,30mm] @ 10lbf [44N] | 10 lbf [45N] |
| | Socket | No | Yes | CNS057354 | n/a | M39029/57-354 | | |

| Contact Size | Wire Accommodations | | | | Tool Information | | |
|--------------|---------------------|------------------------|------------------------------|---------------------------------|------------------|----------------------|------------------------|
| | Size (AWG) | Max Current Rating (A) | ØD Range | Strip Length | Basic Tool | Positioner | Insertion/Removal Tool |
| 12 | 12 | 23 | .097 - .142" [2,46 - 3,61mm] | .209 - .240" [5,31 - 6,10mm] | M22520/1-01 | M22520/1-04 (Yellow) | M81969/14-04 |
| | 14 | 17 | | | | | |
| 16 | 16 | 13 | .065 - .109" [1,65 - 2,77mm] | .209 - .240" [5,31 - 6,10mm] | M22520/1-01 | M22520/1-04 (Blue) | M81969/14-03 |
| | 18 | 10 | | | M22520/7-01 | | |
| | 20 | 7.5 | | | M22520/7-01 | | |
| 20 | 20 | 7.5 | .040 - .083" [1,02 - 2,11mm] | .209 - .240" [5,31 - 6,10mm] | M22520/1-01 | M22520/1-04 (Red) | M81969/14-11 |
| | 22 | 5 | | | M22520/2-01 | | |
| | 24 | 3 | | | M22520/7-01 | | |
| 22D | 22 | 5 | .030 - .054" [0,76 - 1,37mm] | .141 - .172" [3,58 - 4,37mm] | M22520/2-01 | M22520/2-06 | M81969/14-01 |
| | 24 | 3 | | | | | |
| | 26 | 2 | | | M22520/7-01 | M22520/7-06 | |
| | 28 | 1.5 | | | | | |

AMPHENOL PCD PRODUCTS



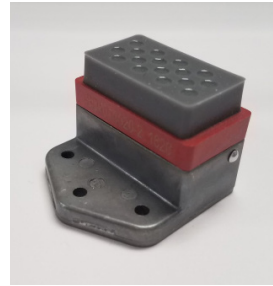
BACKSHELLS



CABLE SOLUTIONS



CIRCULAR



GROUND BLOCKS



JUNCTION MODULES



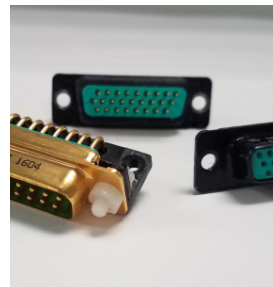
LUMINUS



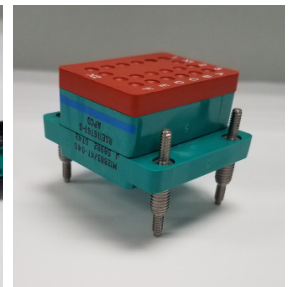
MILITARY AUDIO/POWER



PEGASUS SERIES



RECTANGULAR



RELAY SOCKETS



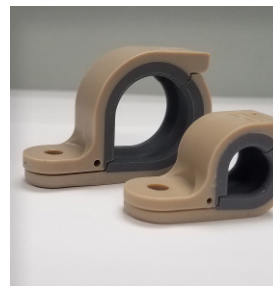
RUGGED SOLUTIONS



SIM



SOLARIS



SYSTEM ATTACHMENTS

Amphenol Pcd
www.amphenolpcd.com

Компания «Океан Электроники» предлагает заключение долгосрочных отношений при поставках импортных электронных компонентов на взаимовыгодных условиях!

Наши преимущества:

- Поставка оригинальных импортных электронных компонентов напрямую с производств Америки, Европы и Азии, а так же с крупнейших складов мира;
- Широкая линейка поставок активных и пассивных импортных электронных компонентов (более 30 млн. наименований);
- Поставка сложных, дефицитных, либо снятых с производства позиций;
- Оперативные сроки поставки под заказ (от 5 рабочих дней);
- Экспресс доставка в любую точку России;
- Помощь Конструкторского Отдела и консультации квалифицированных инженеров;
- Техническая поддержка проекта, помощь в подборе аналогов, поставка прототипов;
- Поставка электронных компонентов под контролем ВП;
- Система менеджмента качества сертифицирована по Международному стандарту ISO 9001;
- При необходимости вся продукция военного и аэрокосмического назначения проходит испытания и сертификацию в лаборатории (по согласованию с заказчиком);
- Поставка специализированных компонентов военного и аэрокосмического уровня качества (Xilinx, Altera, Analog Devices, Intersil, Interpoint, Microsemi, Actel, Aeroflex, Peregrine, VPT, Syfer, Eurofarad, Texas Instruments, MS Kennedy, Miteq, Cobham, E2V, MA-COM, Hittite, Mini-Circuits, General Dynamics и др.);

Компания «Океан Электроники» является официальным дистрибьютором и эксклюзивным представителем в России одного из крупнейших производителей разъемов военного и аэрокосмического назначения «JONHON», а так же официальным дистрибьютором и эксклюзивным представителем в России производителя высокотехнологичных и надежных решений для передачи СВЧ сигналов «FORSTAR».



JONHON

«JONHON» (основан в 1970 г.)

Разъемы специального, военного и аэрокосмического назначения:

(Применяются в военной, авиационной, аэрокосмической, морской, железнодорожной, горно- и нефтедобывающей отраслях промышленности)

«FORSTAR» (основан в 1998 г.)

ВЧ соединители, коаксиальные кабели, кабельные сборки и микроволновые компоненты:

(Применяются в телекоммуникациях гражданского и специального назначения, в средствах связи, РЛС, а так же военной, авиационной и аэрокосмической отраслях промышленности).



Телефон: 8 (812) 309-75-97 (многоканальный)

Факс: 8 (812) 320-03-32

Электронная почта: ocean@oceanchips.ru

Web: <http://oceanchips.ru/>

Адрес: 198099, г. Санкт-Петербург, ул. Калинина, д. 2, корп. 4, лит. А