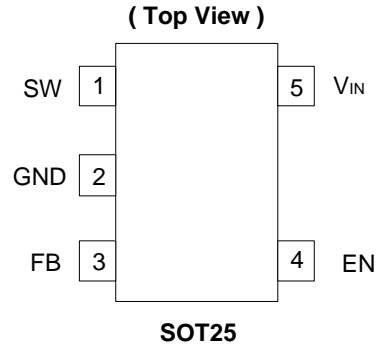


Description

The AP5727 is a high efficiency boost converter in a compact SOT25 that provides the bias voltages for OLED Sub Display and TFT-LCD (Liquid Crystal Display). A high 1.2MHz switching frequency and internal compensation minimizes external part count, PCB area and cost. Integrated soft start reduces inrush current. The AP5727 has a 1.25V feedback voltage making it compatible with industry standard boost converters used to bias LCD panels.

Pin Assignments



Features

- 30V High Output Voltage
- Fast **1.2MHz** Switching Frequency
- Current limit and UVLO Protections
- Internal Thermal Shutdown
- Maximum 1µA Shutdown Current
- Integrated Soft-start Function
- SOT25: Available in “Green” Molding Compound (No Br, Sb)
- Lead Free Finish/RoHS Compliant (Note 1)

Applications

- Small size TFT-LCD Bias power supply.
- OLED bias supply for a clamshell handset sub display
- RF amplifier bias voltages

Notes: 1. EU Directive 2002/95/EC (RoHS). All applicable RoHS exemptions applied. Please visit our website at http://www.diodes.com/products/lead_free.html.

Typical Application Circuit

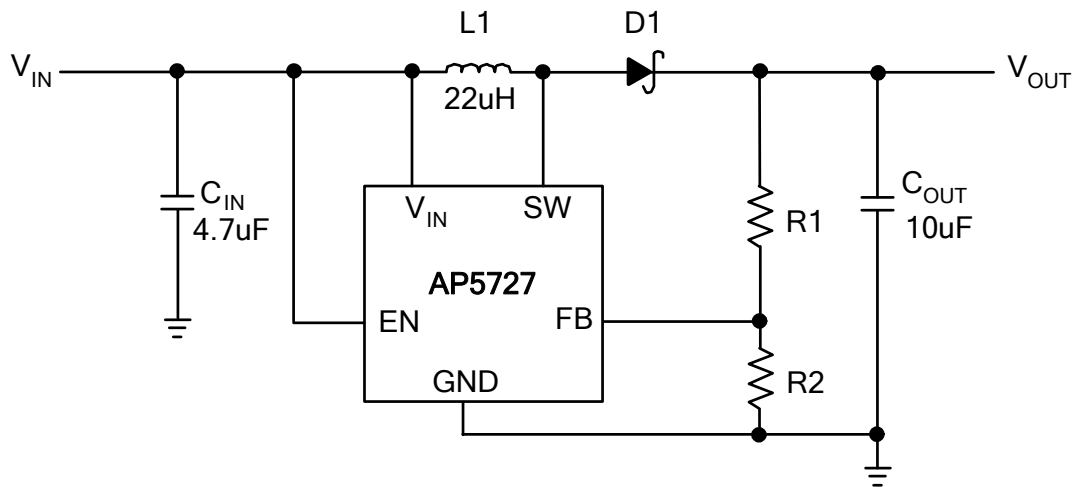


Figure 1. Typical Application Circuit

Functional Block Diagram

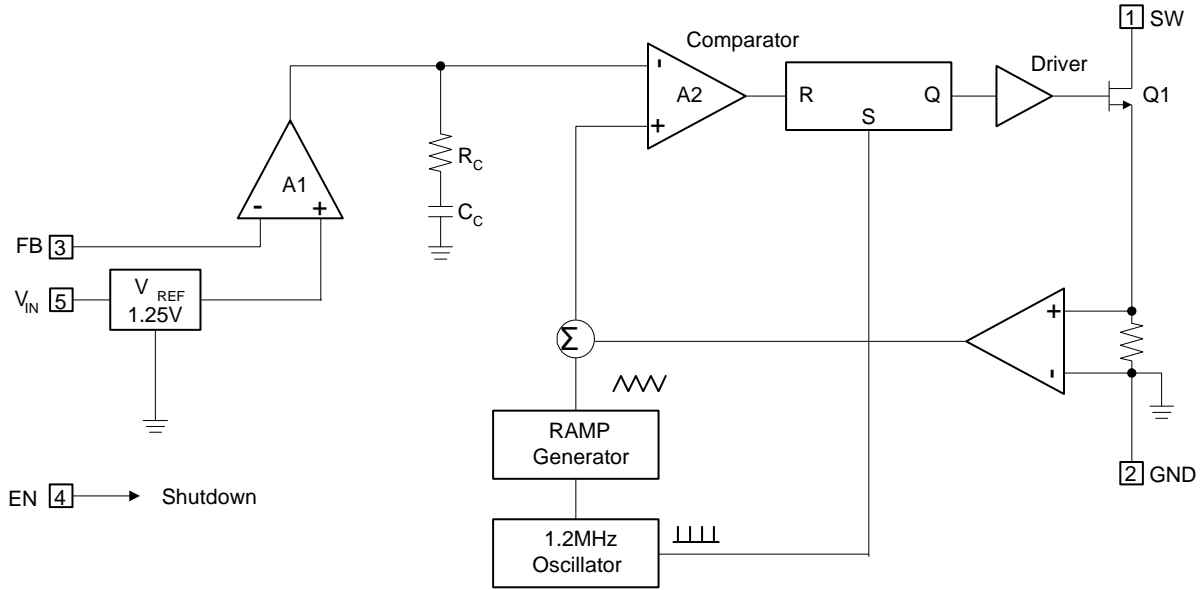


Figure 2. Block Diagram

Pin Descriptions

| Name | Description |
|-----------------|-------------------------------------------------------------------------------------------------------------------------------------------------------------------------------------------------------------------|
| SW | Switch Pin. Connect inductor/diode here. Minimize trace area at this pin to reduce EMI. |
| GND | GND pin |
| FB | Feedback Pin. Reference voltage is 1.25V. |
| EN | Regulator On/Off Control Input. A high input at EN turns on the converter, and a low input turns it off. When not used, connect EN to the input source for automatic startup. The EN pin cannot be left floating. |
| V _{IN} | Input Supply Pin. Must be locally decoupled - 4.7μF recommended to reduce input noise. |

Absolute Maximum Ratings (T_A = 25°C)

| Symbol | Parameter | Rating | Unit |
|---------------------|------------------------------|-------------|------|
| V _{IN} | VIN Pin Voltage | -0.3~7 | V |
| V _{SW} | SW Voltage | -0.3~32 | V |
| V _{FB} | Feedback Pin Voltage | -0.3~7 | V |
| EN | EN | -0.3~7 | V |
| T _{J(MAX)} | Maximum Junction Temperature | 150 | °C |
| T _{LEAD} | Lead Temperature | 300 | °C |
| T _{ST} | Storage Temperature Range | -65 to +150 | °C |

Caution: The absolute maximum ratings are rated values exceeding which the product could suffer physical damage. These values must therefore not be exceeded under any condition.

Recommended Operating Conditions

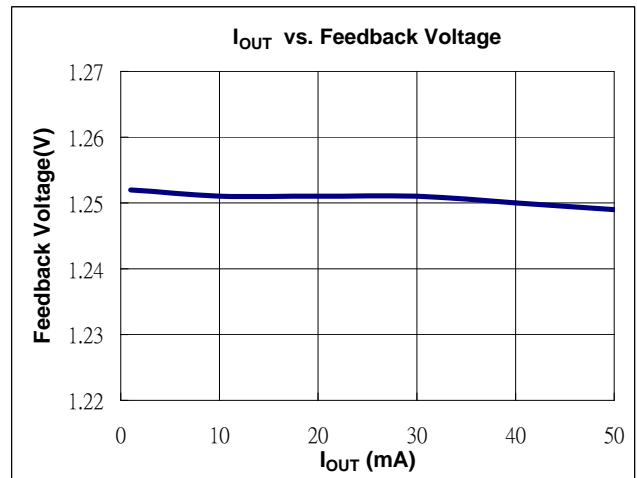
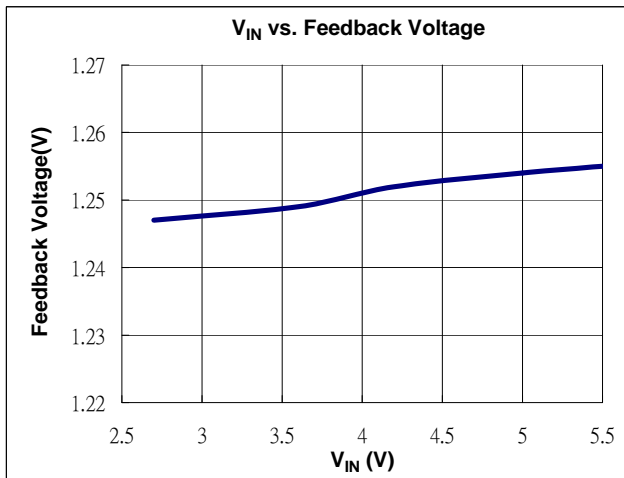
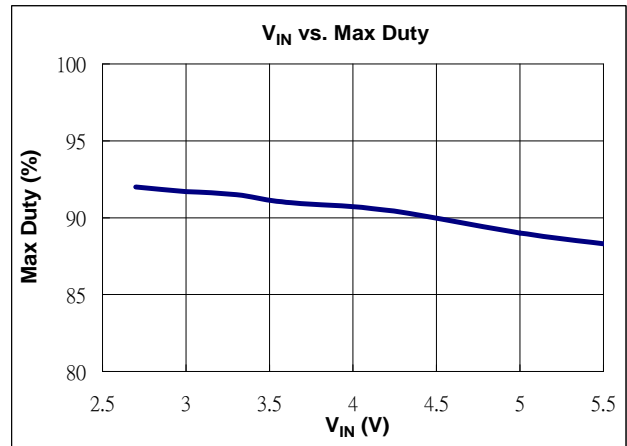
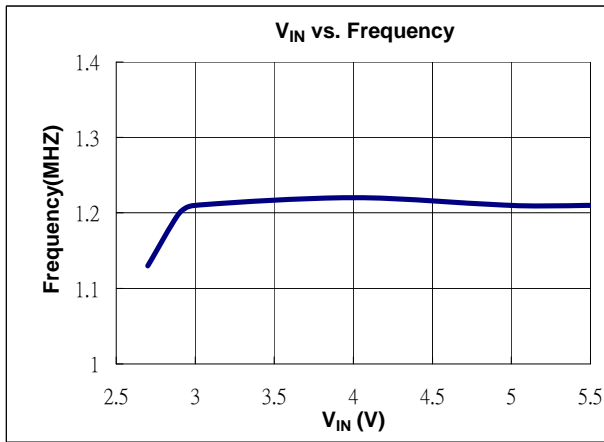
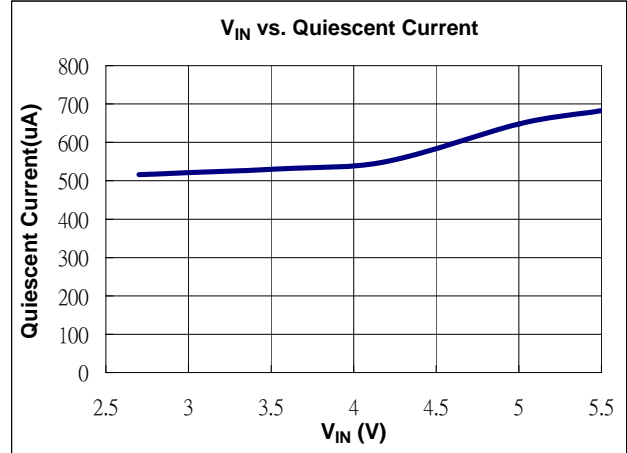
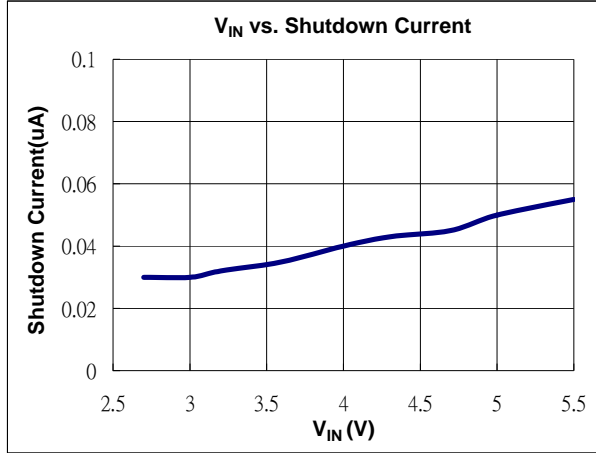
| Symbol | Parameter | Min | Max | Unit |
|-----------------|--------------------------------|-----|-----|------|
| V _{IN} | Input Voltage | 2.7 | 5.5 | V |
| T _J | Operating Junction Temperature | -40 | 125 | °C |
| T _A | Operating Ambient Temperature | -40 | 85 | °C |

Electrical Characteristics (V_{IN} = 3.6V, T_A = 25°C, unless otherwise specified)

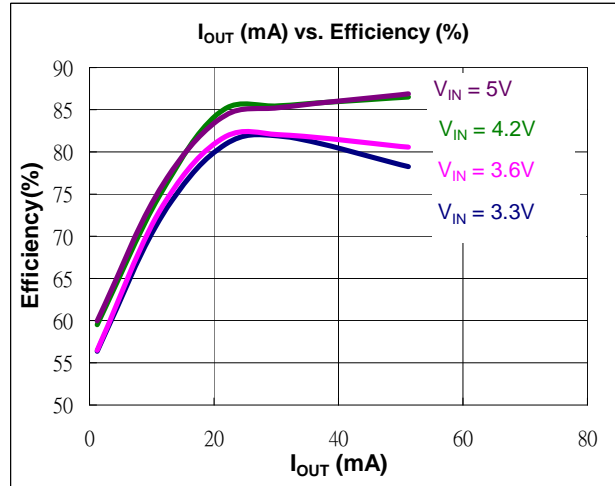
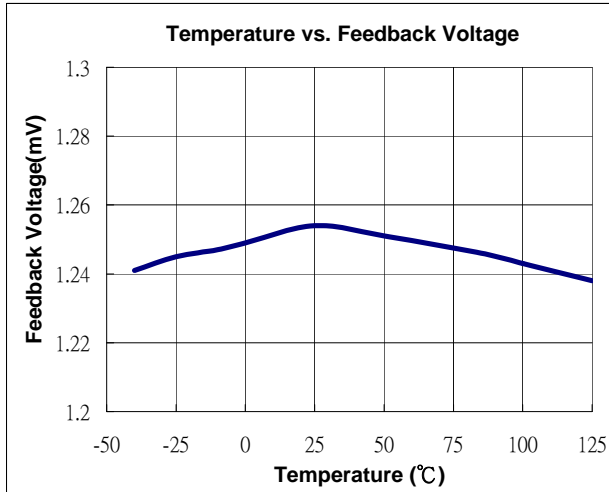
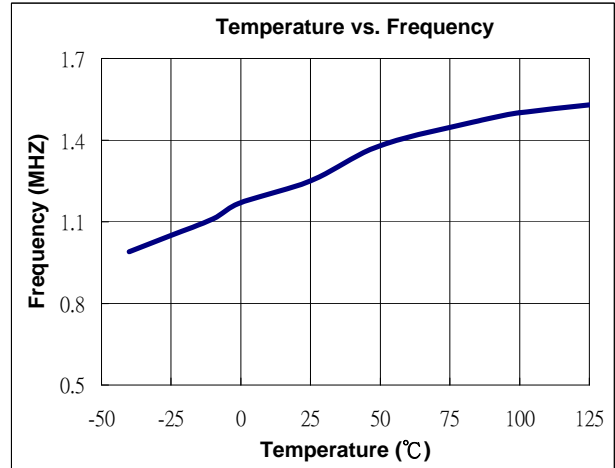
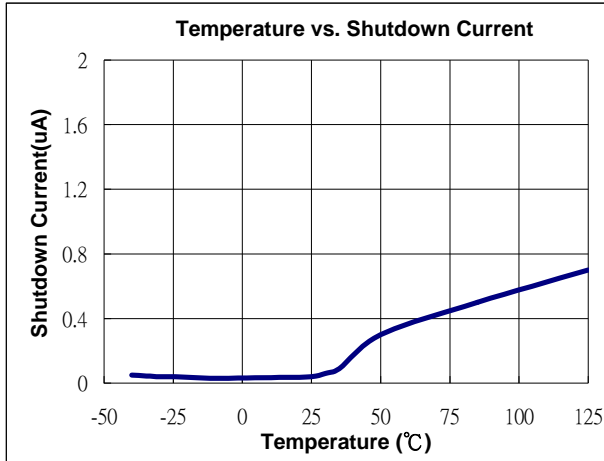
| Symbol | Parameter | Conditions | Min. | Typ. | Max. | Unit |
|-------------------------------|----------------------------------------|------------------------|-------|------|-------|------|
| System Supply Input | | | | | | |
| V _{IN} | Operating Input Voltage | | 2.7 | - | 5.5 | V |
| UVLO | Under Voltage Lockout | | - | 2.2 | 2.4 | V |
| | Under Voltage Lockout Hysteretic | | - | 85 | - | mV |
| I _Q | Quiescent Current | FB=1.3V, No Switching | - | 500 | - | μA |
| I _{SD} | Shutdown Current | V _{EN} < 0.4V | - | 0.1 | 1 | μA |
| Oscillator | | | | | | |
| F _{OSC} | Operation Frequency | | 1 | 1.2 | 1.4 | MHz |
| D _{max} | Maximum Duty Cycle | | 86 | 90 | - | % |
| Reference Voltage | | | | | | |
| V _{FB} | Feedback Voltage | | 1.225 | 1.25 | 1.275 | V |
| I _{FB} | FB Pin Bias Current | | 10 | 45 | 100 | nA |
| MOSFET | | | | | | |
| R _{DS(on)} | On Resistance of MOSFET | | - | 0.95 | 1.2 | Ω |
| I _{OC} | Switching Current Limit | Normal Operation | - | 750 | - | mA |
| Control and Protection | | | | | | |
| EN | Voltage High | ON | 1.5 | - | - | V |
| EN | Voltage Low | OFF | - | - | 0.4 | V |
| I _{EN} | EN Pin Pull Low Current | | - | 4 | 6 | μA |
| θ _{JA} | Thermal Resistance Junction-to-Ambient | SOT25 (Note 2) | | 162 | | °C/W |
| θ _{JC} | Thermal Resistance Junction-to-Case | SOT25 (Note 2) | | 36 | | °C/W |

Notes: 2. Test condition for SOT25: Device mounted on FR-4 substrate, single-layer PC board, 2oz copper, with minimum recommended pad layout

Typical Performance Characteristics ($V_{IN} 3.3V$; $V_{OUT} = 15V$ $I_{OUT} = 20mA$)

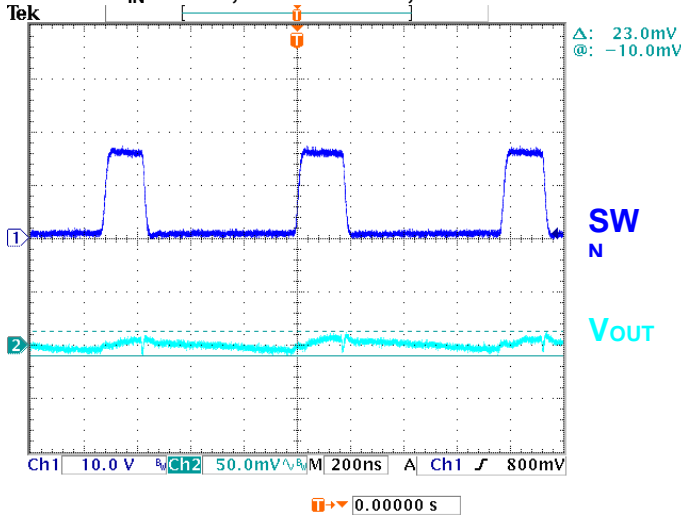


Typical Performance Characteristics ($V_{IN} = 3.3V$; $V_{OUT} = 15V$ $I_{OUT} = 20mA$)

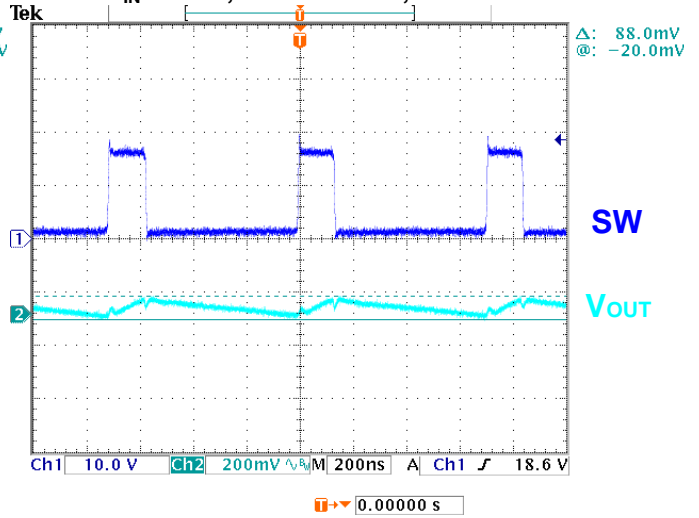


Typical Performance Characteristics (Continued)

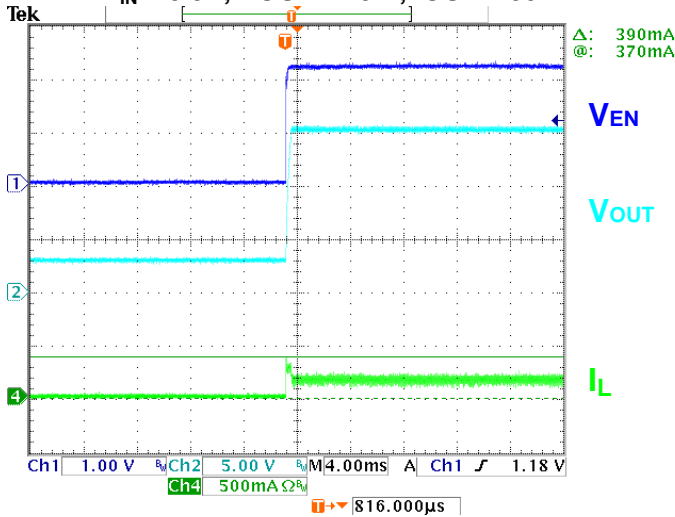
V_{OUT} Ripple
V_{IN} = 3.3V; V_{OUT} = 15V ; I_{OUT} = 5mA



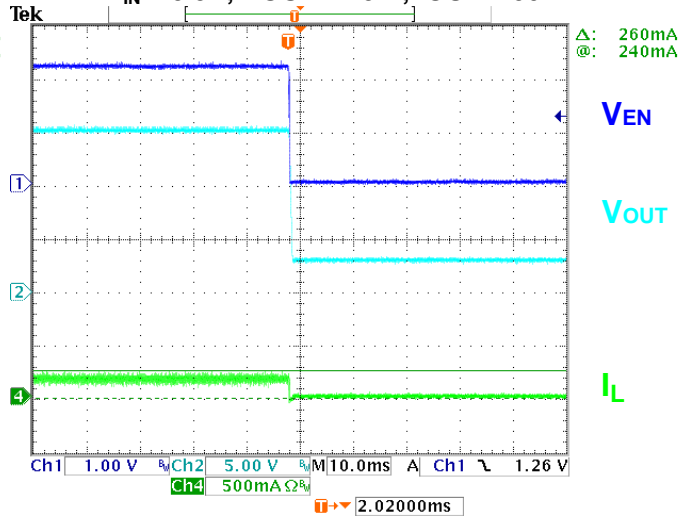
V_{OUT} Ripple
V_{IN} = 3.3V; V_{OUT} = 15V ; I_{OUT} = 50mA



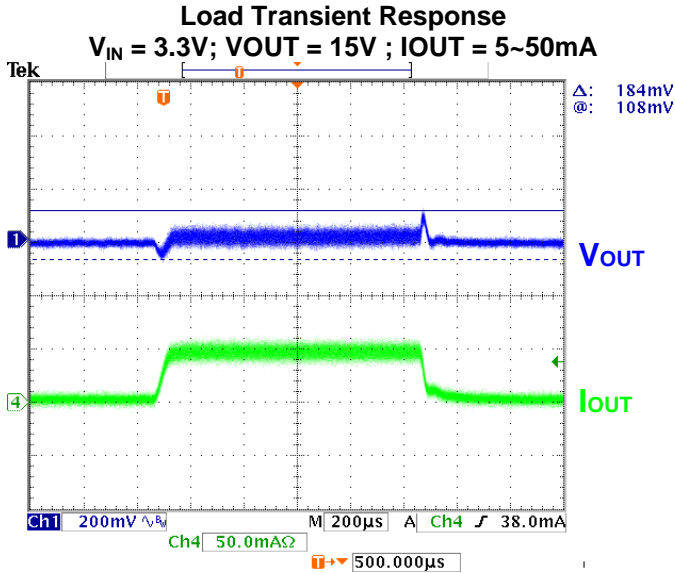
POWER ON
V_{IN} = 3.3V; V_{OUT} = 15V ; I_{OUT} = 50mA



POWER OFF
V_{IN} = 3.3V; V_{OUT} = 15V ; I_{OUT} = 50mA



Typical Performance Characteristics (Continued)



Application Information

Inductor Selection

A 10µH~22µH inductor is recommended for most AP5727 applications. Although small size and high efficiency are major concerns, the inductor should have low core loss at 1.2MHz and low DCR.

Capacitor Selection

Ceramic capacitors, due to their small size, are ideal for AP5727 applications. X5R and X7R types are recommended because they retain their capacitance over wider voltage and temperature ranges than other types such as X5R and X7R. A 4.7µF input capacitor and a 10µF output capacitor are sufficient for most AP5727 applications.

Diode Selection

Schottky diodes, with their low forward voltage drop and fast reverse recovery, are the ideal choices for AP5727 applications. The forward voltage drop of a Schottky diode represents the conduction loss in the diode, while the diode capacitance (C_T) represents the switching loss. For diode selection, both forward voltage drop and diode capacitance need to be considered. Schottky diodes with higher current ratings usually have lower forward voltage drop and larger diode capacitance, which can cause significant switching loss at the 1.2MHz switching frequency of the AP5727.

Application Circuit

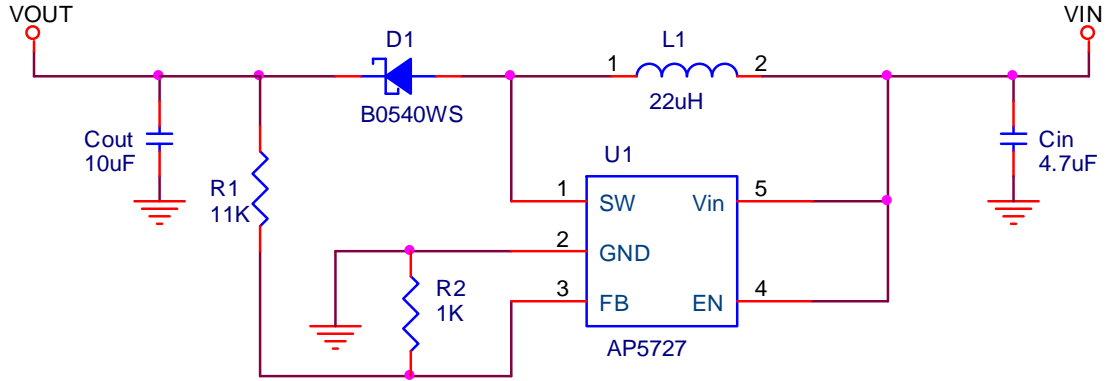


Table 1. Suggested Inductors

| Vendor | Inductors (uH) | Current Rating (A) | Type | Dimensions (mm) | Series |
|-------------------|----------------|--------------------|------|------------------|---------------|
| Würth Electronics | 22 | 0.51A | SMD | 3.8X 3.8 X 1.6 | 744031220 |
| GOTREND | 22 | 0.56A | SMD | 3.8 X 3.8 X 1.05 | GLP3810PH220N |
| TAIYO YUDEN | 22 | 0.51A | SMD | 4.0 X 4.0 X 1.25 | NR4012 |

Table 2. Suggested Capacitors for C_{IN} and C_{OUT}

| Vendor | Capacitance | Type | Series |
|-------------|-------------|------|-------------------|
| TAIYO YUDEN | 4.7uF | SMD | LMK316 B7 475KL-T |
| TAIYO YUDEN | 10uF | SMD | LMK316 F 106ZL-T |

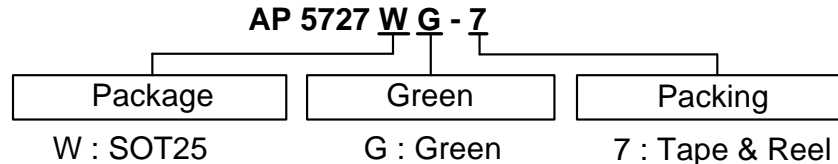
Table 3. Suggested Diodes

| Vendor | Rating | Type | Series |
|--------|-----------|--------|----------|
| ZETEX | 40V/0.5A | SOD323 | ZLLS400 |
| DIODES | 40V/0.5A | SOD323 | B0540WS |
| DIODES | 40V/0.25A | SOD523 | SDM20U40 |

Table 4. Suggested Resistor

| Vendor | Type | Series |
|--------|------|--------|
| YAGEO | SMD | FR-SK |

Ordering Information



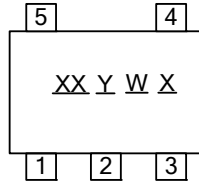
| Device | Package Code | Packaging (Note 3) | 7" Tape and Reel | |
|------------|--------------|--------------------|------------------|--------------------|
| | | | Quantity | Part Number Suffix |
| AP5727WG-7 | W | SOT25 | 3000/Tape & Reel | -7 |

Note: 3. Pad layout as shown on Diodes Inc. suggested pad layout document AP02001, which can be found on our website at <http://www.diodes.com/datasheets/ap02001.pdf>.

Marking Information

(1) SOT25

(Top View)

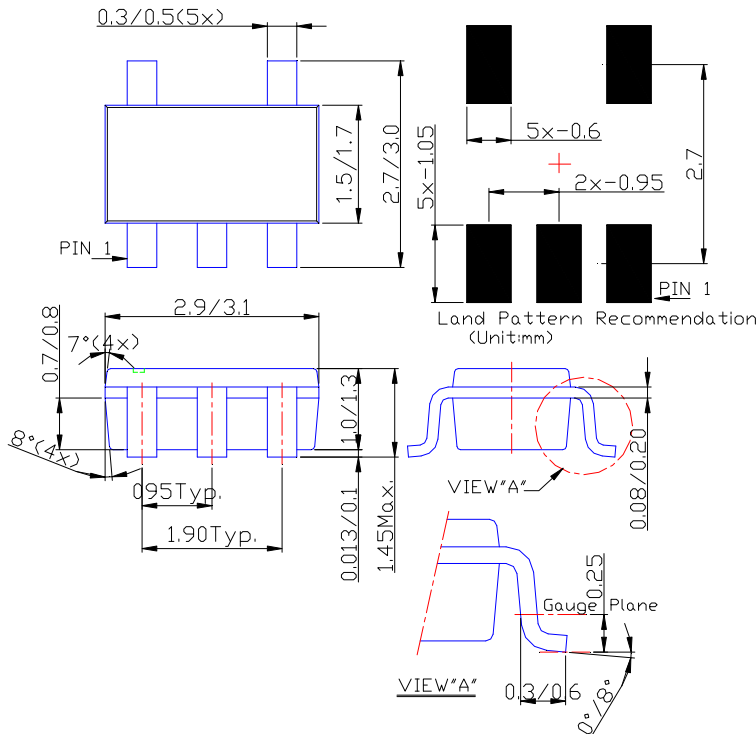


XX : Identification Code
 Y : Year 0~9
 W : Week : A~Z : 1~26 week;
 a~z : 27~52 week; z represents
 52 and 53 week
 X : A~Z : Green

| Part Number | Package | Identification Code |
|-------------|---------|---------------------|
| AP5727 | SOT25 | H8 |

Package Outline Dimensions (All Dimensions in mm)

(1) Package Type: SOT25



IMPORTANT NOTICE

DIODES INCORPORATED MAKES NO WARRANTY OF ANY KIND, EXPRESS OR IMPLIED, WITH REGARDS TO THIS DOCUMENT, INCLUDING, BUT NOT LIMITED TO, THE IMPLIED WARRANTIES OF MERCHANTABILITY AND FITNESS FOR A PARTICULAR PURPOSE (AND THEIR EQUIVALENTS UNDER THE LAWS OF ANY JURISDICTION).

Diodes Incorporated and its subsidiaries reserve the right to make modifications, enhancements, improvements, corrections or other changes without further notice to this document and any product described herein. Diodes Incorporated does not assume any liability arising out of the application or use of this document or any product described herein; neither does Diodes Incorporated convey any license under its patent or trademark rights, nor the rights of others. Any Customer or user of this document or products described herein in such applications shall assume all risks of such use and will agree to hold Diodes Incorporated and all the companies whose products are represented on Diodes Incorporated website, harmless against all damages.

Diodes Incorporated does not warrant or accept any liability whatsoever in respect of any products purchased through unauthorized sales channel.

Should Customers purchase or use Diodes Incorporated products for any unintended or unauthorized application, Customers shall indemnify and hold Diodes Incorporated and its representatives harmless against all claims, damages, expenses, and attorney fees arising out of, directly or indirectly, any claim of personal injury or death associated with such unintended or unauthorized application.

Products described herein may be covered by one or more United States, international or foreign patents pending. Product names and markings noted herein may also be covered by one or more United States, international or foreign trademarks.

LIFE SUPPORT

Diodes Incorporated products are specifically not authorized for use as critical components in life support devices or systems without the express written approval of the Chief Executive Officer of Diodes Incorporated. As used herein:

A. Life support devices or systems are devices or systems which:

1. are intended to implant into the body, or
2. support or sustain life and whose failure to perform when properly used in accordance with instructions for use provided in the labeling can be reasonably expected to result in significant injury to the user.

B. A critical component is any component in a life support device or system whose failure to perform can be reasonably expected to cause the failure of the life support device or to affect its safety or effectiveness.

Customers represent that they have all necessary expertise in the safety and regulatory ramifications of their life support devices or systems, and acknowledge and agree that they are solely responsible for all legal, regulatory and safety-related requirements concerning their products and any use of Diodes Incorporated products in such safety-critical, life support devices or systems, notwithstanding any devices- or systems-related information or support that may be provided by Diodes Incorporated. Further, Customers must fully indemnify Diodes Incorporated and its representatives against any damages arising out of the use of Diodes Incorporated products in such safety-critical, life support devices or systems.

Copyright © 2010, Diodes Incorporated

www.diodes.com

Компания «Океан Электроники» предлагает заключение долгосрочных отношений при поставках импортных электронных компонентов на взаимовыгодных условиях!

Наши преимущества:

- Поставка оригинальных импортных электронных компонентов напрямую с производств Америки, Европы и Азии, а так же с крупнейших складов мира;
- Широкая линейка поставок активных и пассивных импортных электронных компонентов (более 30 млн. наименований);
- Поставка сложных, дефицитных, либо снятых с производства позиций;
- Оперативные сроки поставки под заказ (от 5 рабочих дней);
- Экспресс доставка в любую точку России;
- Помощь Конструкторского Отдела и консультации квалифицированных инженеров;
- Техническая поддержка проекта, помощь в подборе аналогов, поставка прототипов;
- Поставка электронных компонентов под контролем ВП;
- Система менеджмента качества сертифицирована по Международному стандарту ISO 9001;
- При необходимости вся продукция военного и аэрокосмического назначения проходит испытания и сертификацию в лаборатории (по согласованию с заказчиком);
- Поставка специализированных компонентов военного и аэрокосмического уровня качества (Xilinx, Altera, Analog Devices, Intersil, Interpoint, Microsemi, Actel, Aeroflex, Peregrine, VPT, Syfer, Eurofarad, Texas Instruments, MS Kennedy, Miteq, Cobham, E2V, MA-COM, Hittite, Mini-Circuits, General Dynamics и др.);

Компания «Океан Электроники» является официальным дистрибьютором и эксклюзивным представителем в России одного из крупнейших производителей разъемов военного и аэрокосмического назначения «JONHON», а так же официальным дистрибьютором и эксклюзивным представителем в России производителя высокотехнологичных и надежных решений для передачи СВЧ сигналов «FORSTAR».



JONHON

«JONHON» (основан в 1970 г.)

Разъемы специального, военного и аэрокосмического назначения:

(Применяются в военной, авиационной, аэрокосмической, морской, железнодорожной, горно- и нефтедобывающей отраслях промышленности)

«FORSTAR» (основан в 1998 г.)

ВЧ соединители, коаксиальные кабели, кабельные сборки и микроволновые компоненты:

(Применяются в телекоммуникациях гражданского и специального назначения, в средствах связи, РЛС, а так же военной, авиационной и аэрокосмической отраслях промышленности).



Телефон: 8 (812) 309-75-97 (многоканальный)

Факс: 8 (812) 320-03-32

Электронная почта: ocean@oceanchips.ru

Web: <http://oceanchips.ru/>

Адрес: 198099, г. Санкт-Петербург, ул. Калинина, д. 2, корп. 4, лит. А