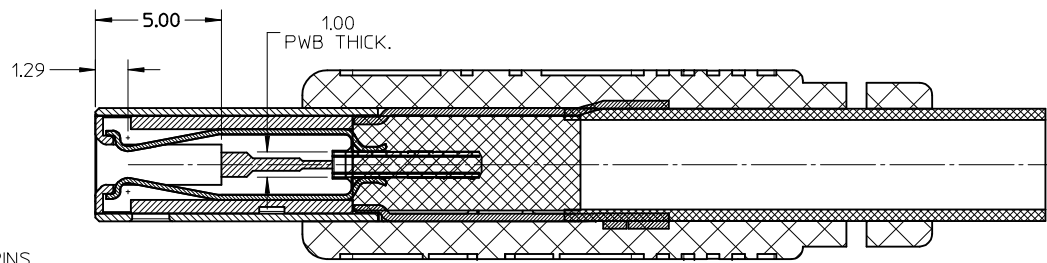
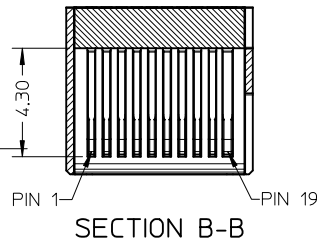


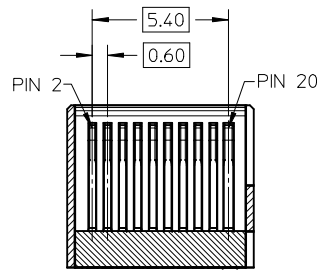
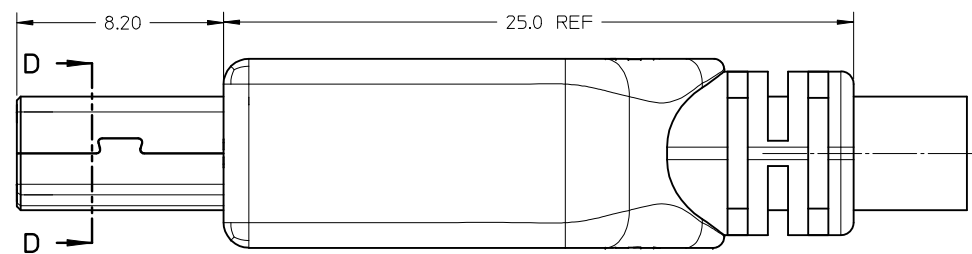
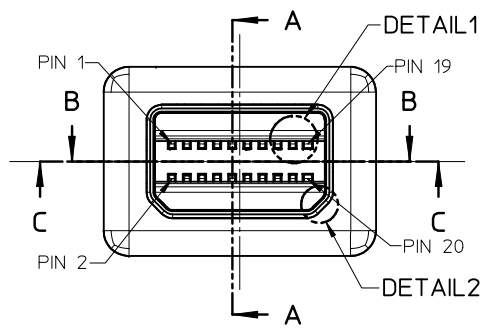
DETAIL1



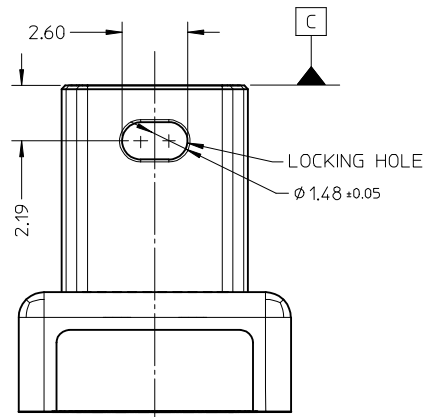
SECTION A-A



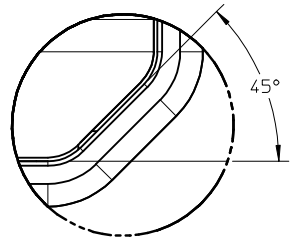
SECTION B-B



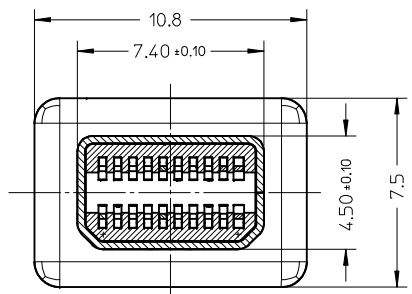
SECTION C-C



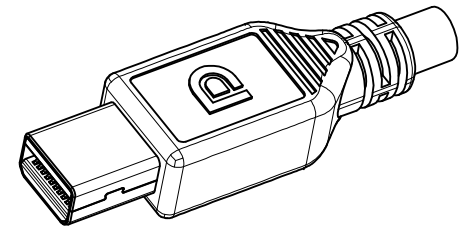
BOTTOM VIEW



DETAIL2



SECTION D-D

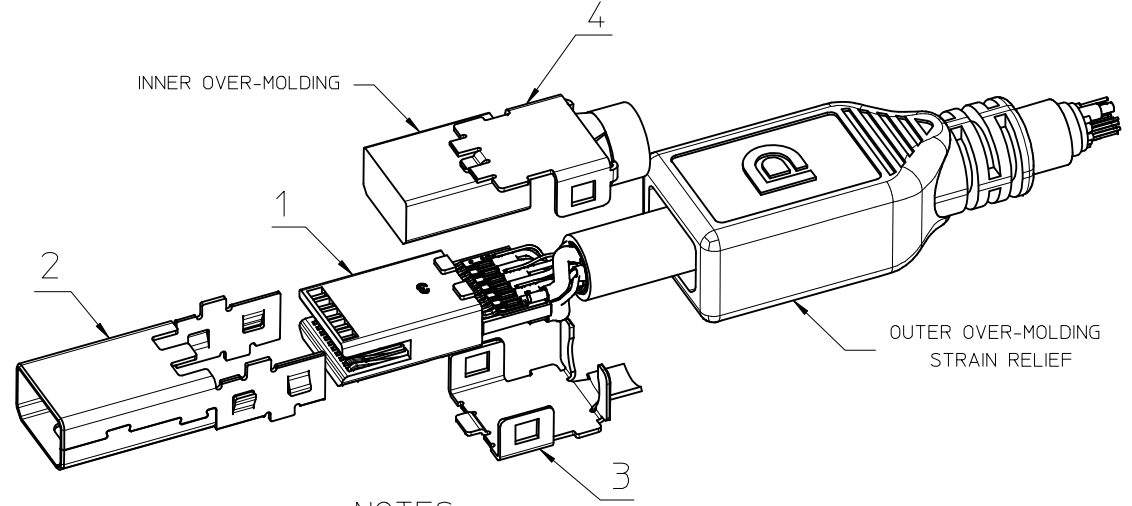


| | | | | | | | |
|---|--|---|--|---|--|---|--|
| NEW PRODUCT EC NO: SHZ010-0088 DRINKWEI 2009/09/14 CHYKD-RZHANG 2009/09/14 APPR: XJ.SONG 2009/09/14 REV B | QUALITY SYMBOLS ▽=0 ◻=0 | GENERAL TOLERANCES (UNLESS SPECIFIED) mm INCH 4 PLACES ± --- ± --- 3 PLACES ± --- ± --- 2 PLACES ± 0.25 ± --- 1 PLACE ± 0.30 ± --- ANGULAR ± -- ° | DIMENSION STYLE MM ONLY DRAWN BY: KLAUS WEI CHECKED BY: ROST ZHANG APPROVED BY: HARVEY WANG MATERIAL NO. | DATE: 2008/03/31 DATE: 2008/03/31 DATE: 2008/03/31 | SCALE: 5:1 DESIGN UNITS: METRIC THIRD ANGLE PROJECTION | TITLE: MINI DISPLAY PORT PLUG MOLEX INCORPORATED DOCUMENT NO. SD-105061-200 SHEET NO. 1 OF 7 | |
| | DRAFT WHERE APPLICABLE MUST REMAIN WITHIN DIMENSIONS | | SEE SHEET 2 | THIS DRAWING CONTAINS INFORMATION THAT IS PROPRIETARY TO MOLEX INCORPORATED AND SHOULD NOT BE USED WITHOUT WRITTEN PERMISSION | | | |
| | | | SIZE: A3 | | | | |
| | | | | | | | |

| TOP ROW | | | BOTTOM ROW | | |
|------------|-------------|--------------|------------|-------------|-----------------|
| PIN NUMBER | SIGNAL TYPE | PIN NAME | PIN NUMBER | SIGNAL TYPE | PIN NAME |
| 1 | GND | GND | 2 | IN | HOT PLUG DETECT |
| 3 | OUT | ML_LANE 0(p) | 4 | CONFIG | CONFIG 1 |
| 5 | OUT | ML_LANE 0(n) | 6 | CONFIG | CONFIG 2 |
| 7 | GND | GND | 8 | GND | GND |
| 9 | OUT | ML_LANE 1(p) | 10 | OUT | ML_LANE 3(p) |
| 11 | OUT | ML_LANE 1(n) | 12 | OUT | ML_LANE 3(n) |
| 13 | GND | GND | 14 | GND | GND |
| 15 | OUT | ML_LANE 2(p) | 16 | I/O | AUX_CH(p) |
| 17 | OUT | ML_LANE 2(n) | 18 | I/O | AUX_CH(n) |
| 19 | RTN | RETURN | 20 | POWER OUT | DP_PWR |

| ITEM | PART NAME | PART NUMBER | QTY'S |
|------|--------------|-------------|-------|
| 1 | SUB-ASSEMBLY | WHITE | 1 |
| | | BLACK | |
| 2 | MAIN-SHELL | 105061-0005 | 1 |
| 3 | BOTTOM SHELL | 105061-0006 | 1 |
| 4 | TOP-SHELL | 105061-0007 | 1 |

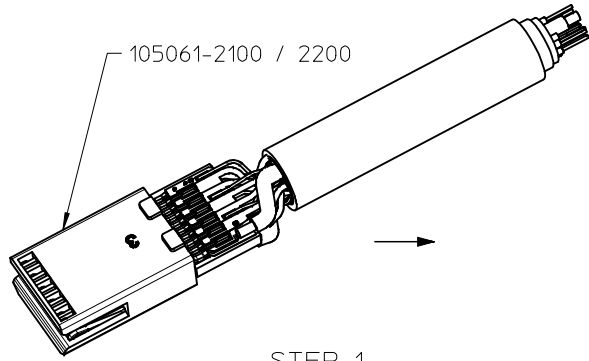
- NOTES:
- MATERIAL:
 - 1.1. PLASTIC: HIGH TEMPERATURE THERMOPLASTICS.
 - 1.2. TERMINAL: PHOSPHOR BRONZE.
 - 1.3. SHIELD SHELL: COPPER ALLOY.
 - 1.4. OTHER SHELL: COPPER ALLOY.
 - PLATING:
 - 2.1. TERMINAL:
 - 2.1.1. UNDERPLATING: NICKEL 1.30 MICROMETER MIN.
 - 2.1.2. CONTACT AREA: GOLD 0.76 MICROMETER MIN.
 - 2.1.3. SOLDER AREA: GOLD FLASH.
 - 2.2. METAL SHELL: NICKEL 1.30 MICROMETER MIN.
 - MECHANICAL PROPERTIES:
 - 3.1. TERMINAL RETENTION FORCE: 0.5 Kgf MIN.
 - 3.2. MATING FORCE: 4.0 Kgf MAX.
 - 3.3. NORMAL FORCE: 25gf MIN.
 - 3.4. DURABILITY: 1500 CYCLES.
 - ELECTRICAL PROPERTIES:
 - 4.1. APPLIED VOLTAGE RATING: 30V AC (RMS)
 - 4.2. CONTACT CURRENT RATING: 0.5 Amp
 - 4.3. DIELECTRIC WITHSTANDING: 200V AC MIN.
 - 4.4. INSULATION RESISTANCE: 100 Megaohm MIN.
 - ENVIRONMENTAL PROPERTIES:
 - 5.1. OPERATING TEMPERATURE: -20°C TO 85°C.
 - 5.2. BE APPLICABLE TO HANDWORK SOLDER & IR-REFLOW PROCESS
 - THIS PRODUCT COMPLIANT TO RoHS DIRECTIVE 2002/95/EC, AND ELV DIRECTIVE 2000/53/EC.



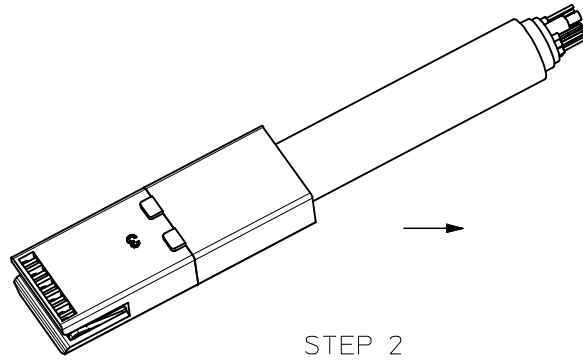
NOTES:
OVER-MOLDING ONLY FOR REFERENCE

| | | | | | | | | |
|---|-------------------------------|---------------------------------------|------------|---|------------|------------------------|------------------------|--|
| NEW PRODUCT EC NO: SH2010-0088 DRW:KWEI 2009/09/14 CHK:RZHANG 2009/09/14 APPR:XJ.SONG 2009/09/21 | QUALITY SYMBOLS ▽=0 ◻=0 | GENERAL TOLERANCES (UNLESS SPECIFIED) | | DIMENSION STYLE | SCALE | DESIGN UNITS | THIRD ANGLE PROJECTION | |
| | | | | MM ONLY | N/A | METRIC | | |
| | | mm | INCH | DRAWN BY | DATE | TITLE | | |
| | | 4 PLACES ±--- | ±--- | KLAUS WEI | 2008/03/31 | MINI DISPLAY PORT PLUG | | |
| 3 PLACES ±--- | ±--- | CHECKED BY | DATE | MOLEX INCORPORATED | | | | |
| 2 PLACES ±--- | ±--- | ROST ZHANG | 2008/03/31 | | | | | |
| 1 PLACE ±--- | ±--- | APPROVED BY | DATE | DOCUMENT NO. SD-105061-200 SHEET NO. 2 OF 7 | | | | |
| ANGULAR ±---° | | HARVEY WANG | 2008/03/31 | | | | | |
| DRAFT WHERE APPLICABLE MUST REMAIN WITHIN DIMENSIONS | | SEE TABLE | | THIS DRAWING CONTAINS INFORMATION THAT IS PROPRIETARY TO MOLEX INCORPORATED AND SHOULD NOT BE USED WITHOUT WRITTEN PERMISSION | | | | |

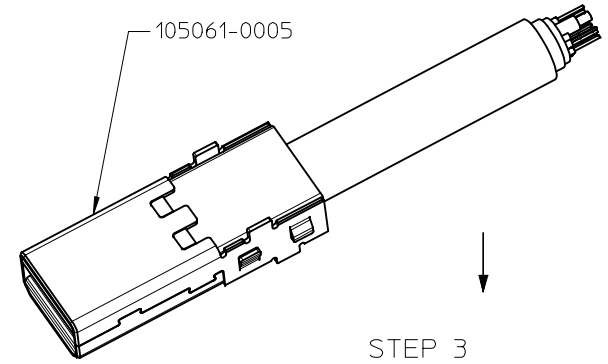
ASSEMBLY PROCEDURE



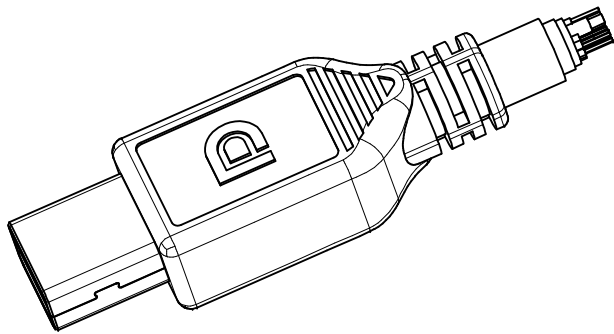
STEP 1
SOLDER WIRE



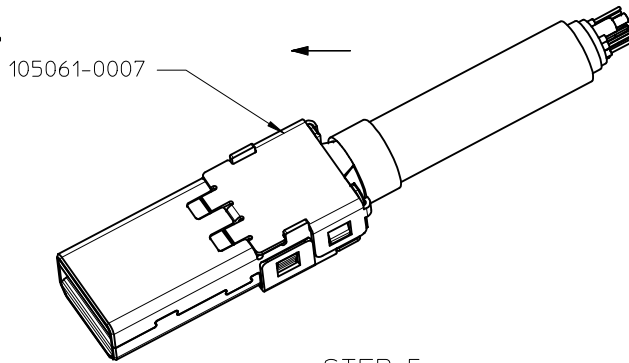
STEP 2
INNER OVER-MOLDING



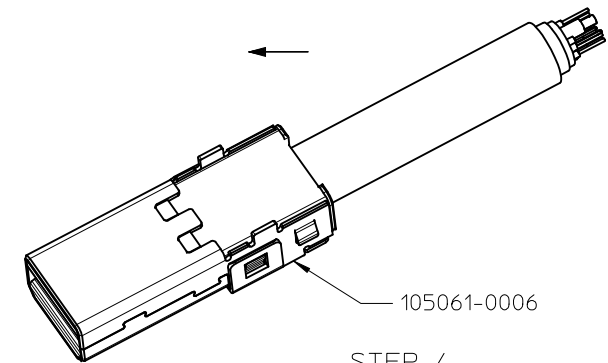
STEP 3
ASSEMBLE MAIN SHELL



STEP 6
OUTER OVER-MOLDING

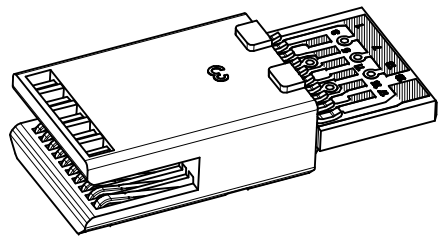
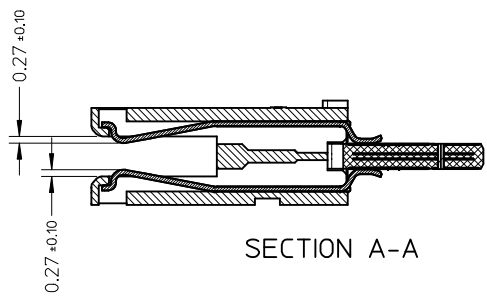
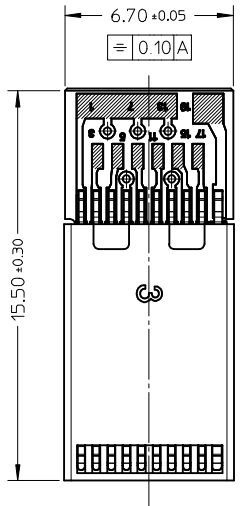


STEP 5
ASSEMBLE TOP SHELL AND CRIMPING

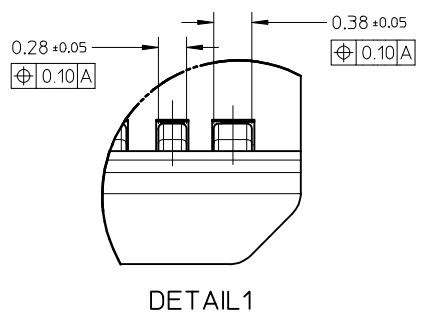
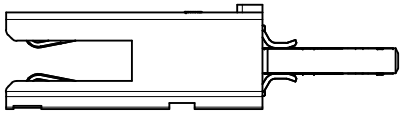
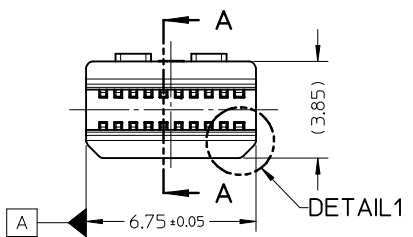


STEP 4
ASSEMBLE BOTTOM SHELL

| | | | | | | | | |
|---|-------------------------------|---|---|--|---|----------------------------------|--------------------------------------|---------------------|
| NEW PRODUCT IEC NO: SH2010-0088 DRW:KWCWEI 2009/09/14 CH:KDRZHANG 2009/09/14 APPR:XJ.SONG 2009/09/21 | QUALITY SYMBOLS ▽=0 ◻=0 | GENERAL TOLERANCES (UNLESS SPECIFIED) | | DIMENSION STYLE MM ONLY | SCALE N/A | DESIGN UNITS METRIC | THIRD ANGLE PROJECTION | |
| | | 4 PLACES ±--- ±--- 3 PLACES ±--- ±--- 2 PLACES ±--- ±--- 1 PLACE ±--- ±--- | mm INCH ±--- ±--- ±--- ±--- ±--- ±--- ±--- ±--- | DRAWN BY DATE KLAUS WEI 2008/03/31 | TITLE MINI DISPLAY PORT PLUG | | | |
| | | ANGULAR ±---° | DRAFT WHERE APPLICABLE MUST REMAIN WITHIN DIMENSIONS | CHECKED BY DATE ROST ZHANG 2008/03/31 | APPROVED BY DATE HARVEY WANG 2008/03/31 | MATERIAL NO. SEE ABOVE | DOCUMENT NO. SD-105061-200 | SHEET NO. 3 OF 7 |
| | REV B | DESCRIPTION | | SIZE A3 | THIS DRAWING CONTAINS INFORMATION THAT IS PROPRIETARY TO MOLEX INCORPORATED AND SHOULD NOT BE USED WITHOUT WRITTEN PERMISSION | | | |



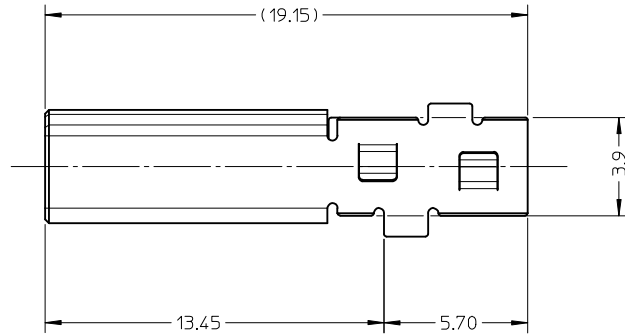
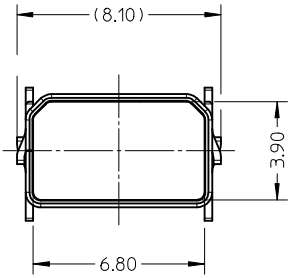
- NOTES:
- MATERIAL:
 PLASTIC: LCP ,UL94V-0 .
 METAL: COPPER OR COPPER ALLOY.
 - PACKAGING SPECIFICATION : PK-105061-001.
 - PRODUCT SPECIFICATION: PS-105061-001.



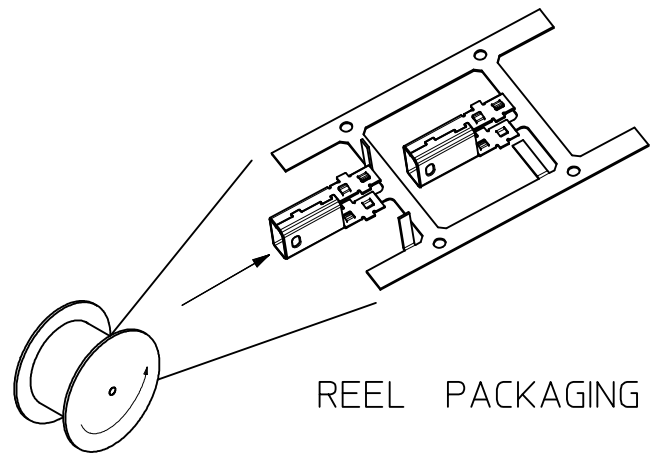
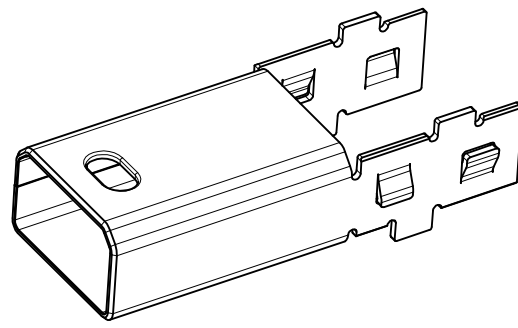
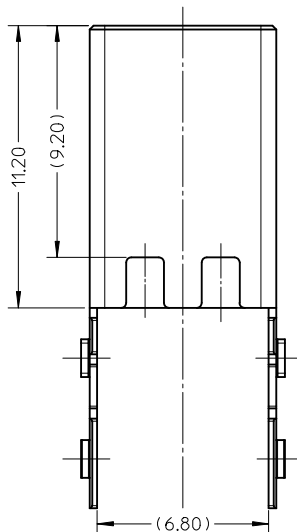
| | | |
|-------------|------------|-------|
| 105061-2200 | LCP | WHITE |
| 105061-2100 | LCP | BLACK |
| PART NUMBER | RESIN TYPE | COLOR |

| | | | | | | | | |
|---|--|--------------------|---|---|----------------------------|-------------------------------|------------------------|------------------------|
| NEW PRODUCT EC NO: SH2010-0088 DRW:KWEI CH:KDRZHANG APPR:XJ.SONG | 2009/09/14 2009/09/14 2009/09/21 | DESCRIPTION REV | QUALITY SYMBOLS ▽=0 ◻=0 | GENERAL TOLERANCES (UNLESS SPECIFIED) mm INCH | DIMENSION STYLE MM ONLY | SCALE 5:1 | DESIGN UNITS METRIC | THIRD ANGLE PROJECTION |
| | | | 4 PLACES ± --- ± --- 3 PLACES ± --- ± --- 2 PLACES ± 0.10 ± --- 1 PLACE ± 0.15 ± --- ANGULAR ± ---° | DRAWN BY DATE KLAUS WEI 2008/03/31 CHECKED BY DATE ROST ZHANG 2008/03/31 APPROVED BY DATE HARVEY WANG 2008/03/31 | TITLE SUB-ASSEMBLY | MOLEX INCORPORATED | | |
| | | | DRAFT WHERE APPLICABLE MUST REMAIN WITHIN DIMENSIONS | SIZE A3 | 105061-2*00 105061-2*00 | DOCUMENT NO. SD-105061-200 | SHEET NO. 4 OF 7 | |
| | | | THIS DRAWING CONTAINS INFORMATION THAT IS PROPRIETARY TO MOLEX INCORPORATED AND SHOULD NOT BE USED WITHOUT WRITTEN PERMISSION | | | | | |

10 9 8 7 6 5 4 3 2 1



- NOTES:
1. MATERIALS: COPPER ALLOY
THICKNESS: 0.30±0.01mm..
 2. FINISH: NICKEL 1.30 MICROMETRE MIN.
 3. COMPLIANT TO RoHS DIRECTIVE 2002/95/EC AND ELV DIRECTIVE 2000/53/EC.
 4. PACKAGING QUANTITIES : 800 PCS PER REEL.

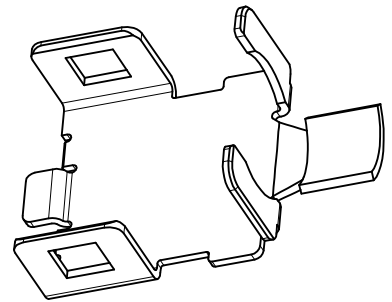
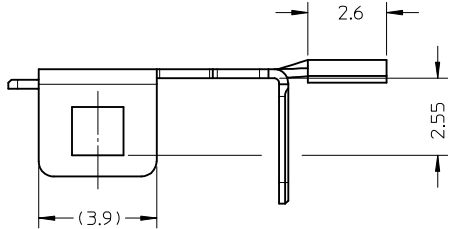


REEL PACKAGING

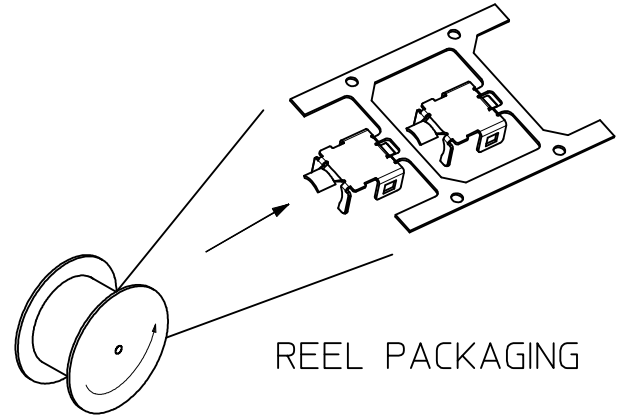
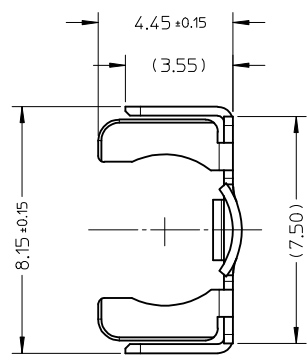
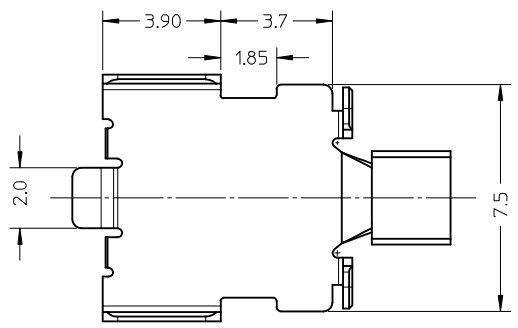
| | | | | | | | | | | |
|--|-------------------------------|---------------------------------------|-------------------|-----------------------------------|---|---------------------|--------------------------------------|------------------------|----------------------------|--|
| NEW PRODUCT EC NO: SH2010-0088 DRW:KWEI 2009/09/14 CHKD:RZHANG 2009/09/14 APPR:XJ.SONG 2009/09/14 | QUALITY SYMBOLS ▽=0 ◻=0 | GENERAL TOLERANCES (UNLESS SPECIFIED) | | DIMENSION STYLE MM ONLY | | SCALE 5:1 | DESIGN UNITS METRIC | THIRD ANGLE PROJECTION | | |
| | | | mm | INCH | DRAWN BY | DATE | TITLE | | | |
| | | 4 PLACES | ±--- | ±--- | KLAUS WEI | 2008/03/31 | MAIN SHELL | | | |
| | | 3 PLACES | ±--- | ±--- | CHECKED BY | DATE | | | | |
| 2 PLACES | ±0.10 | ±--- | ROST ZHANG | 2008/03/31 | MOLEX INCORPORATED | | | | | |
| 1 PLACE | ±0.15 | ±--- | APPROVED BY | DATE | | | | | | |
| | ANGULAR ±---° | | HARVEY WANG | 2008/03/31 | MATERIAL NO. 105061-0005 | | DOCUMENT NO. SD-105061-200 | | SHEET NO. 5 OF 7 | |
| DRAFT WHERE APPLICABLE MUST REMAIN WITHIN DIMENSIONS | | | SIZE A3 | | THIS DRAWING CONTAINS INFORMATION THAT IS PROPRIETARY TO MOLEX INCORPORATED AND SHOULD NOT BE USED WITHOUT WRITTEN PERMISSION | | | | | |

9 8 7 6 5 4 3 2 1

10 9 8 7 6 5 4 3 2 1



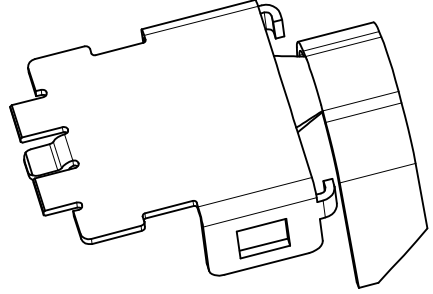
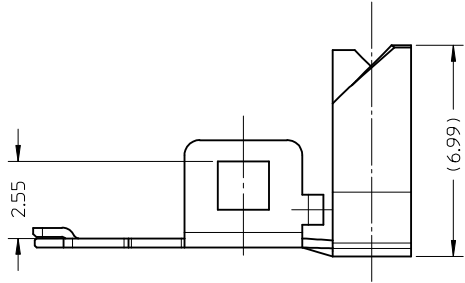
- NOTES:
1. MATERIALS: COPPER ALLOY.
THICKNESS: 0.30±0.01mm.
 2. FINISH: NICKEL 1.30 MICROMETRE MIN.
 3. COMPLIANT TO RoHS DIRECTIVE 2002/95/EC AND ELV DIRECTIVE 2000/53/EC.
 4. PACKAGING QUANTITIES : 1500 PCS PER REEL.



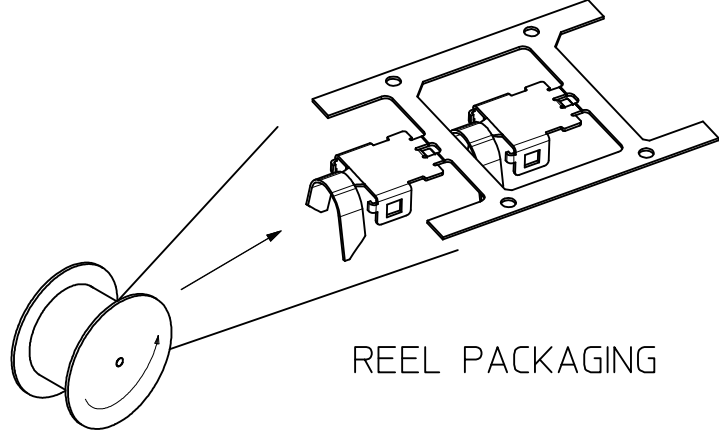
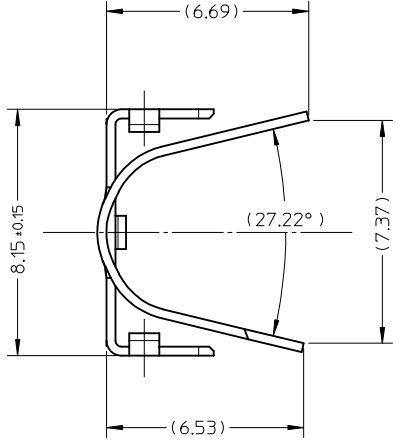
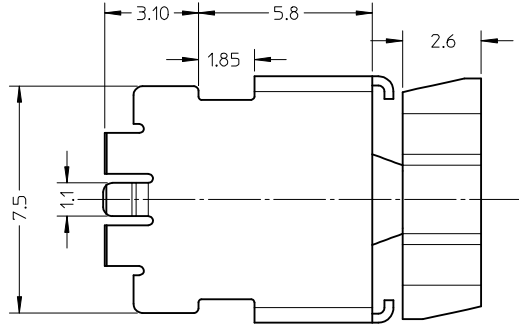
REEL PACKAGING

| | | | | | | | | | |
|--|-------------------------------|--|----------------------|-----------------------------------|----------------------|-------------------------------|--|--|-------------------------|
| NEW PRODUCT EC NO: SH2010-0088 DRW:KWEI 2009/09/14 CHK:RZHANG 2009/09/14 APPR:XJSONG 2009/09/21 | QUALITY SYMBOLS ▽=0 ◻=0 | GENERAL TOLERANCES (UNLESS SPECIFIED) | | DIMENSION STYLE MM ONLY | SCALE 5:1 | DESIGN UNITS METRIC | THIRD ANGLE PROJECTION | | |
| | | 4 PLACES ± --- ± --- | 3 PLACES ± --- ± --- | 2 PLACES ± 0.10 ± --- | 1 PLACE ± 0.15 ± --- | ANGULAR ± ---° | DRAWN BY: KLAUS WEI DATE: 2008/03/31 CHECKED BY: ROST ZHANG DATE: 2008/03/31 APPROVED BY: HARVEY WANG DATE: 2008/03/31 | | |
| | | DRAFT WHERE APPLICABLE MUST REMAIN WITHIN DIMENSIONS | | | | | TITLE: BOTTOM SHELL | | |
| | | MATERIAL NO. 105061-0006 | | | | | DOCUMENT NO. SD-105061-200 | | SHEET NO. 6 OF 7 |

9 8 7 6 5 4 3 2 1



- NOTES:
1. MATERIALS: COPPER ALLOY.
THICKNESS: 0.30±0.01mm.
 2. FINISH: NICKEL 1.30 MICROMETRE MIN.
 3. COMPLIANT TO RoHS DIRECTIVE 2002/95/EC AND ELV DIRECTIVE 2000/53/EC.
 4. PACKAGING QUANTITIES : 1500 PCS PER REEL.



REEL PACKAGING

| | | | | | | | | | | | |
|---|--------------------|---|---------------------------------------|---|-----------------|---------------|--------------------|------------------------|--|--|--|
| NEW PRODUCT EC NO: SH2010-0088 DRW:KWEI 2009/09/14 CHKD:RZHANG 2009/09/14 APPR:XJ.SONG 2009/09/21 | DESCRIPTION REV | QUALITY SYMBOLS | GENERAL TOLERANCES (UNLESS SPECIFIED) | | DIMENSION STYLE | SCALE | DESIGN UNITS | THIRD ANGLE PROJECTION | | | |
| | | ▽=0 Ⓢ=0 | mm | INCH | MM ONLY | 5:1 | METRIC | | | | |
| | | 4 PLACES ± --- ± --- 3 PLACES ± --- ± --- 2 PLACES ± 0.10 ± --- 1 PLACE ± 0.15 ± --- | ANGULAR ± ---° | | DRAWN BY | DATE | TITLE | | | | |
| | | DRAFT WHERE APPLICABLE MUST REMAIN WITHIN DIMENSIONS | | 105061-0007 | | KLAUS WEI | 2008/03/31 | TOP SHELL | | | |
| | | | | APPROVED BY | | DATE | MOLEX INCORPORATED | | | | |
| | | | | HARVEY WANG | | 2008/03/31 | DOCUMENT NO. | | | | |
| | | | | MATERIAL NO. | | SD-105061-200 | | SHEET NO. | | | |
| | | | | SIZE | | 7 OF 7 | | | | | |
| | | | | THIS DRAWING CONTAINS INFORMATION THAT IS PROPRIETARY TO MOLEX INCORPORATED AND SHOULD NOT BE USED WITHOUT WRITTEN PERMISSION | | | | | | | |

Компания «Океан Электроники» предлагает заключение долгосрочных отношений при поставках импортных электронных компонентов на взаимовыгодных условиях!

Наши преимущества:

- Поставка оригинальных импортных электронных компонентов напрямую с производств Америки, Европы и Азии, а так же с крупнейших складов мира;
- Широкая линейка поставок активных и пассивных импортных электронных компонентов (более 30 млн. наименований);
- Поставка сложных, дефицитных, либо снятых с производства позиций;
- Оперативные сроки поставки под заказ (от 5 рабочих дней);
- Экспресс доставка в любую точку России;
- Помощь Конструкторского Отдела и консультации квалифицированных инженеров;
- Техническая поддержка проекта, помощь в подборе аналогов, поставка прототипов;
- Поставка электронных компонентов под контролем ВП;
- Система менеджмента качества сертифицирована по Международному стандарту ISO 9001;
- При необходимости вся продукция военного и аэрокосмического назначения проходит испытания и сертификацию в лаборатории (по согласованию с заказчиком);
- Поставка специализированных компонентов военного и аэрокосмического уровня качества (Xilinx, Altera, Analog Devices, Intersil, Interpoint, Microsemi, Actel, Aeroflex, Peregrine, VPT, Syfer, Eurofarad, Texas Instruments, MS Kennedy, Miteq, Cobham, E2V, MA-COM, Hittite, Mini-Circuits, General Dynamics и др.);

Компания «Океан Электроники» является официальным дистрибьютором и эксклюзивным представителем в России одного из крупнейших производителей разъемов военного и аэрокосмического назначения «JONHON», а так же официальным дистрибьютором и эксклюзивным представителем в России производителя высокотехнологичных и надежных решений для передачи СВЧ сигналов «FORSTAR».



JONHON

«JONHON» (основан в 1970 г.)

Разъемы специального, военного и аэрокосмического назначения:

(Применяются в военной, авиационной, аэрокосмической, морской, железнодорожной, горно- и нефтедобывающей отраслях промышленности)

«FORSTAR» (основан в 1998 г.)

ВЧ соединители, коаксиальные кабели, кабельные сборки и микроволновые компоненты:

(Применяются в телекоммуникациях гражданского и специального назначения, в средствах связи, РЛС, а так же военной, авиационной и аэрокосмической отраслях промышленности).



Телефон: 8 (812) 309-75-97 (многоканальный)

Факс: 8 (812) 320-03-32

Электронная почта: ocean@oceanchips.ru

Web: <http://oceanchips.ru/>

Адрес: 198099, г. Санкт-Петербург, ул. Калинина, д. 2, корп. 4, лит. А