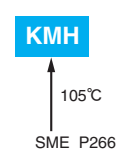


# KMH Series

- Endurance with ripple current : 2,000 hours at 105°C
- RoHS Compliant

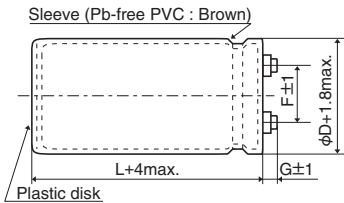


## ◆ SPECIFICATIONS

Items	Characteristics
Category	-40 to +105°C (10 to 100V <sub>dc</sub> ) -25 to +105°C (160 to 400V <sub>dc</sub> )
Temperature Range	
Rated Voltage Range	10 to 400V <sub>dc</sub>
Capacitance Tolerance	±20% (M) (at 20°C, 120Hz)
Leakage Current	I=0.02CV or 5mA, whichever is smaller. Where, I : Max. leakage current (μA), C : Nominal capacitance (μF), V : Rated voltage (V) (at 20°C after 5 minutes)
Dissipation Factor (tanδ)	Shall not exceed the values shown in the STANDARD RATINGS (at 20°C, 120Hz)
Low Temperature Characteristics	Capacitance change 10 to 100V <sub>dc</sub> : C(-40°C)/C(+20°C) ≥ 0.6 160 to 400V <sub>dc</sub> : C(-25°C)/C(+20°C) ≥ 0.7 (at 120Hz)
Insulation Resistance	When measured between the terminals that are connected to each other and to the mounting clamp on the insulating sleeve covering the case by using an insulation resistance meter of 500V <sub>dc</sub> , the insulation resistance shall not be less than 100MΩ.
Insulation Withstanding Voltage	When a voltage of 2,000V <sub>ac</sub> is applied for 1 minute between the terminals that are connected to each other and to the mounting clamp on the insulating sleeve covering the case, there shall not be electrical damage.
Endurance	The following specifications shall be satisfied when the capacitors are restored to 20°C after subjected to DC voltage with the rated ripple current is applied (the peak voltage shall not exceed the rated voltage) for 2,000 hours at 105°C.
	Capacitance change ≤ ±20% of the initial value
	D.F. (tanδ) ≤ 200% of the initial specified value
	Leakage current ≤ The initial specified value
Shelf Life	The following specifications shall be satisfied when the capacitors are restored to 20°C after exposing them for 500 hours at 105°C without voltage applied. Before the measurement, the capacitor shall be preconditioned by applying voltage according to Item 4.1 of JIS C 5101-4.
	Capacitance change ≤ ±20% of the initial value
	D.F. (tanδ) ≤ 200% of the initial specified value
	Leakage current ≤ The initial specified value

## ◆ DIMENSIONS (Screw-Mount) [mm]

- Terminal Code : LG



φ35 to φ63.5 : G=6  
φ76.2 & φ89 : G=5

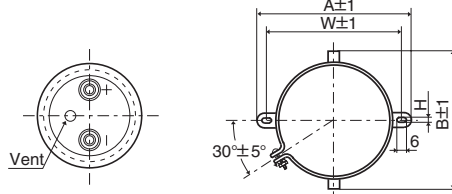
<Screw specifications>

Plus hexagon-headed screw : M5×0.8×10

Maximum screw tightening torque : 3.23Nm

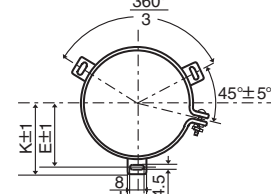
\* The screw and the mounting clamp are separately supplied and not attached to the product.

- Mounting Clamp Code : B



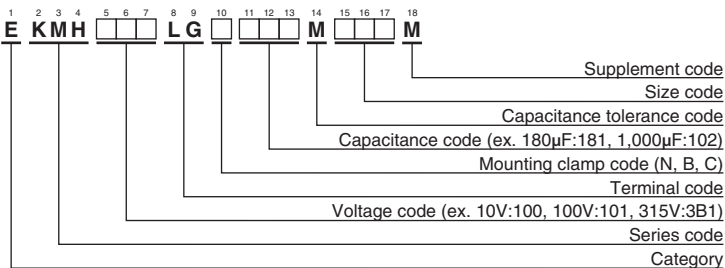
φD	A	B	W	H	F
35	58.0	44.0	48.0	3.5	12.7
50	78.0	64.0	68.0	4.5	22.4
63.5	90.0	76.0	80.0	4.5	28.0
76.2	104.5	90.0	93.5	4.5	31.5

- Mounting Clamp Code : C



φD	E	K	J	F
50	32.5	37.0	14.0	22.4
63.5	38.1	43.5	14.0	28.0
76.2	44.5	50.0	14.0	31.5
89	50.8	56.5	16.0	31.5

## ◆ PART NUMBERING SYSTEM



Please refer to "Product code guide (screw-mount terminal type)"

◆ STANDARD RATINGS

WV (Vdc)	Cap (μF)	Case size φD×L(mm)	tanδ	Rated ripple current (Arms/105°C,120Hz)	Part No.	WV (Vdc)	Cap (μF)	Case size φD×L(mm)	tanδ	Rated ripple current (Arms/105°C,120Hz)	Part No.	
10	27,000	35×50	0.45	4.90	EKMH100LGB273MA50M	35	56,000	50×100	0.40	11.4	EKMH350LGC563MCA0M	
	33,000	35×50	0.50	5.10	EKMH100LGB333MA50M		68,000	50×120	0.40	13.6	EKMH350LGC683MCC0M	
	39,000	35×60	0.50	5.90	EKMH100LGB393MA60M		82,000	63.5×100	0.45	14.8	EKMH350LGC823MDA0M	
	47,000	35×80	0.50	7.10	EKMH100LGB473MA80M		100,000	63.5×120	0.45	17.6	EKMH350LGC104MDC0M	
	56,000	35×80	0.60	7.10	EKMH100LGB563MA80M		120,000	63.5×120	0.55	17.6	EKMH350LGC124MDC0M	
	68,000	35×100	0.60	8.50	EKMH100LGB683MAA0M		150,000	76.2×120	0.65	19.8	EKMH350LGC154MEC0M	
	82,000	35×100	0.65	8.90	EKMH100LGB823MAA0M		180,000	76.2×120	0.80	19.8	EKMH350LGC184MEC0M	
	100,000	35×120	0.65	10.7	EKMH100LGB104MAC0M		220,000	76.2×140	0.80	23.4	EKMH350LGC224MEE0M	
	120,000	50×80	0.75	11.0	EKMH100LGC124MC80M		270,000	89×140	1.00	25.5	EKMH350LGC274MFE0M	
	150,000	50×100	0.80	13.2	EKMH100LGC154MCA0M		50	3,900	35×50	0.20	2.80	EKMH500LGB392MA50M
	180,000	50×120	0.80	15.7	EKMH100LGC184MCC0M			4,700	35×50	0.20	3.10	EKMH500LGB472MA50M
	220,000	50×120	0.85	16.8	EKMH100LGC224MCC0M			5,600	35×50	0.20	3.30	EKMH500LGB562MA50M
	270,000	63.5×120	1.00	19.6	EKMH100LGC274MDC0M			6,800	35×50	0.25	3.30	EKMH500LGB682MA50M
	330,000	63.5×120	1.20	19.7	EKMH100LGC334MDC0M			8,200	35×60	0.25	3.80	EKMH500LGB822MA60M
	390,000	76.2×120	1.50	21.3	EKMH100LGC394MEC0M			10,000	35×80	0.25	4.60	EKMH500LGB103MA80M
	470,000	76.2×120	1.80	21.4	EKMH100LGC474MEC0M			12,000	35×80	0.25	5.10	EKMH500LGB123MA80M
	560,000	76.2×140	2.00	23.6	EKMH100LGC564MEE0M			15,000	35×80	0.25	5.70	EKMH500LGB153MA80M
	680,000	89×140	2.40	26.0	EKMH100LGC684MFE0M			18,000	35×100	0.25	6.70	EKMH500LGB183MAA0M
16	18,000	35×50	0.40	4.20	EKMH160LGB183MA50M	22,000		35×120	0.25	8.10	EKMH500LGB223MAC0M	
	22,000	35×50	0.40	4.70	EKMH160LGB223MA50M	27,000		50×80	0.25	9.10	EKMH500LGC273MC80M	
	27,000	35×60	0.40	5.50	EKMH160LGB273MA60M	33,000		50×100	0.25	11.1	EKMH500LGC333MCA0M	
	33,000	35×60	0.45	5.70	EKMH160LGB333MA60M	39,000		50×120	0.25	13.1	EKMH500LGC393MCC0M	
	39,000	35×80	0.45	6.80	EKMH160LGB393MA80M	47,000		50×120	0.30	13.9	EKMH500LGC473MCC0M	
	47,000	35×80	0.50	7.10	EKMH160LGB473MA80M	56,000		63.5×100	0.35	13.9	EKMH500LGC563MDA0M	
	56,000	35×100	0.50	8.40	EKMH160LGB563MAA0M	68,000		63.5×120	0.35	16.6	EKMH500LGC683MDC0M	
	68,000	35×100	0.55	8.80	EKMH160LGB683MAA0M	82,000		76.2×120	0.40	18.9	EKMH500LGC823MEC0M	
	82,000	50×80	0.55	10.7	EKMH160LGC823MC80M	100,000		76.2×120	0.45	19.5	EKMH500LGC104MEC0M	
	100,000	50×80	0.65	10.8	EKMH160LGC104MC80M	120,000	76.2×120	0.55	19.5	EKMH500LGC124MEC0M		
	120,000	50×100	0.65	13.1	EKMH160LGC124MCA0M	150,000	89×140	0.60	23.9	EKMH500LGC154MFE0M		
	150,000	50×120	0.70	15.3	EKMH160LGC154MCC0M	180,000	89×140	0.75	23.9	EKMH500LGC184MFE0M		
	180,000	50×120	0.80	15.7	EKMH160LGC184MCC0M	63	2,700	35×50	0.20	2.30	EKMH630LGB272MA50M	
	220,000	63.5×120	0.85	19.2	EKMH160LGC224MDC0M		3,300	35×50	0.20	2.50	EKMH630LGB332MA50M	
	270,000	63.5×120	1.00	19.6	EKMH160LGC274MDC0M		3,900	35×50	0.20	2.80	EKMH630LGB392MA50M	
	330,000	76.2×120	1.30	21.1	EKMH160LGC334MEC0M		4,700	35×50	0.20	3.10	EKMH630LGB472MA50M	
	390,000	76.2×120	1.50	21.3	EKMH160LGC394MEC0M		5,600	35×60	0.20	3.50	EKMH630LGB562MA60M	
	470,000	76.2×140	1.60	24.2	EKMH160LGC474MEE0M		6,800	35×60	0.20	3.90	EKMH630LGB682MA60M	
560,000	89×140	2.00	28.1	EKMH160LGC564MFE0M	8,200		35×80	0.20	4.70	EKMH630LGB822MA80M		
680,000	89×140	2.40	28.5	EKMH160LGC684MFE0M	10,000		35×80	0.25	4.70	EKMH630LGB103MA80M		
25	12,000	35×50	0.35	3.70	EKMH250LGB123MA50M		12,000	35×100	0.25	5.50	EKMH630LGB123MAA0M	
	15,000	35×50	0.35	4.10	EKMH250LGB153MA50M		15,000	35×120	0.25	6.60	EKMH630LGB153MAC0M	
	18,000	35×60	0.35	4.80	EKMH250LGB183MA60M		18,000	50×80	0.25	7.40	EKMH630LGC183MC80M	
	22,000	35×60	0.35	5.30	EKMH250LGB223MA60M		22,000	50×100	0.25	9.00	EKMH630LGC223MCA0M	
	27,000	35×80	0.35	6.40	EKMH250LGB273MA80M		27,000	50×120	0.25	10.9	EKMH630LGC273MCC0M	
	33,000	35×80	0.40	6.70	EKMH250LGB333MA80M		33,000	50×120	0.25	12.0	EKMH630LGC333MCC0M	
	39,000	35×100	0.40	7.80	EKMH250LGB393MAA0M		39,000	63.5×100	0.30	12.5	EKMH630LGC393MDA0M	
	47,000	35×120	0.40	9.30	EKMH250LGB473MAC0M		47,000	63.5×120	0.30	14.9	EKMH630LGC473MDC0M	
	56,000	50×80	0.45	9.70	EKMH250LGC563MC80M		56,000	63.5×120	0.30	16.3	EKMH630LGB562MDC0M	
	68,000	50×100	0.45	11.2	EKMH250LGC683MCA0M		68,000	76.2×120	0.35	18.4	EKMH630LGC683MEC0M	
	82,000	50×100	0.50	11.2	EKMH250LGC823MCA0M	82,000	76.2×140	0.40	20.0	EKMH630LGC823MEE0M		
	100,000	50×120	0.50	14.8	EKMH250LGC104MCC0M	100,000	76.2×140	0.50	20.0	EKMH630LGC104MEE0M		
	120,000	63.5×100	0.65	14.9	EKMH250LGC124MDA0M	120,000	89×140	0.60	21.8	EKMH630LGC124MFE0M		
	150,000	63.5×120	0.65	17.9	EKMH250LGC154MDC0M	80	2,200	35×50	0.15	2.40	EKMH800LGB222MA50M	
	180,000	63.5×120	0.80	17.9	EKMH250LGC184MDC0M		2,700	35×50	0.15	2.70	EKMH800LGB272MA50M	
	220,000	76.2×120	0.85	21.3	EKMH250LGC224MEC0M		3,300	35×50	0.15	3.00	EKMH800LGB332MA50M	
	270,000	76.2×120	1.00	21.7	EKMH250LGC274MEC0M		3,900	35×60	0.15	3.40	EKMH800LGB392MA60M	
	330,000	76.2×140	1.20	23.4	EKMH250LGC334MEE0M		4,700	35×60	0.15	3.70	EKMH800LGB472MA60M	
390,000	89×140	1.50	24.9	EKMH250LGC394MFE0M	5,600		35×80	0.15	4.50	EKMH800LGB562MA80M		
35	8,200	35×50	0.30	3.30	EKMH350LGB822MA50M		6,800	35×80	0.15	4.90	EKMH800LGB682MA80M	
	10,000	35×50	0.30	3.60	EKMH350LGB103MA50M		8,200	35×100	0.20	5.10	EKMH800LGB822MAA0M	
	12,000	35×60	0.30	4.20	EKMH350LGB123MA60M		10,000	35×120	0.20	6.10	EKMH800LGB103MAC0M	
	15,000	35×60	0.30	4.70	EKMH350LGB153MA60M		12,000	50×80	0.20	6.70	EKMH800LGC123MC80M	
	18,000	35×80	0.30	5.70	EKMH350LGB183MA80M		15,000	50×100	0.20	8.30	EKMH800LGC153MCA0M	
	22,000	35×80	0.30	6.30	EKMH350LGB223MA80M		18,000	50×120	0.20	9.90	EKMH800LGC183MCC0M	
	27,000	35×100	0.30	7.50	EKMH350LGB273MAA0M		22,000	50×120	0.20	11.0	EKMH800LGC223MCC0M	
	33,000	35×120	0.30	9.00	EKMH350LGB333MAC0M		27,000	63.5×100	0.25	11.4	EKMH800LGC273MDA0M	
	39,000	50×80	0.35	9.20	EKMH350LGC393MC80M		33,000	76.2×100	0.25	13.9	EKMH800LGC333MEA0M	
	47,000	50×100	0.35	11.2	EKMH350LGC473MCA0M		39,000	76.2×100	0.30	13.9	EKMH800LGC393MEA0M	

◆ STANDARD RATINGS

WV (Vdc)	Cap (μF)	Case size φD×L(mm)	tanδ	Rated ripple current (Arms/105°C,120Hz)	Part No.	WV (Vdc)	Cap (μF)	Case size φD×L(mm)	tanδ	Rated ripple current (Arms/105°C,120Hz)	Part No.	
80	47,000	76.2×120	0.30	16.5	EKMH800LGC473MEC0M	250	330	35×50	0.15	0.90	EKMH251LGB331MA50M	
	56,000	76.2×120	0.30	18.1	EKMH800LGC563MEC0M		390	35×50	0.15	1.00	EKMH251LGB391MA50M	
	68,000	76.2×140	0.35	19.7	EKMH800LGC683MEE0M		470	35×50	0.15	1.10	EKMH251LGB471MA50M	
	82,000	89×140	0.40	22.1	EKMH800LGC823MFE0M		560	35×50	0.15	1.20	EKMH251LGB561MA50M	
100	1,800	35×50	0.10	2.70	EKMH101LGB182MA50M		680	35×60	0.15	1.40	EKMH251LGB681MA60M	
	2,200	35×50	0.10	3.00	EKMH101LGB222MA50M		820	35×80	0.15	1.60	EKMH251LGB821MA80M	
	2,700	35×60	0.10	3.50	EKMH101LGB272MA60M		1,000	35×80	0.20	1.60	EKMH251LGB102MA80M	
	3,300	35×80	0.10	4.20	EKMH101LGB332MA80M		1,200	35×80	0.20	1.80	EKMH251LGB122MA80M	
	3,900	35×80	0.12	4.20	EKMH101LGB392MA80M		1,500	35×100	0.20	2.10	EKMH251LGB152MAA0M	
	4,700	35×100	0.12	5.00	EKMH101LGB472MAA0M		1,800	35×120	0.20	2.50	EKMH251LGB182MAC0M	
	5,600	35×100	0.12	5.40	EKMH101LGB562MAA0M		2,200	50×80	0.20	2.90	EKMH251LGC222MC80M	
	6,800	35×120	0.15	5.80	EKMH101LGB682MAC0M		2,700	50×100	0.20	3.50	EKMH251LGC272MCA0M	
	8,200	50×80	0.15	6.40	EKMH101LGC822MC80M		3,300	50×120	0.20	4.20	EKMH251LGC332MCC0M	
	10,000	50×100	0.15	7.80	EKMH101LGC103MCA0M		3,900	50×120	0.20	4.60	EKMH251LGC392MCC0M	
	12,000	50×120	0.15	9.30	EKMH101LGC123MCC0M		4,700	63.5×120	0.20	5.70	EKMH251LGC472MDC0M	
	15,000	50×120	0.15	10.4	EKMH101LGC153MCC0M		5,600	63.5×120	0.20	6.30	EKMH251LGC562MDC0M	
	18,000	63.5×100	0.20	10.4	EKMH101LGC183MDA0M		6,800	76.2×120	0.20	7.70	EKMH251LGC682MEC0M	
	22,000	63.5×120	0.20	12.5	EKMH101LGC223MDC0M		8,200	76.2×120	0.20	8.40	EKMH251LGC822MEC0M	
	27,000	76.2×120	0.25	13.7	EKMH101LGC273MEC0M		10,000	76.2×140	0.20	10.0	EKMH251LGC103MEE0M	
	33,000	76.2×120	0.25	15.2	EKMH101LGC333MEC0M		12,000	89×140	0.20	11.9	EKMH251LGC123MFE0M	
39,000	76.2×140	0.30	16.1	EKMH101LGC393MEE0M	315		180	35×50	0.10	0.80	EKMH315LGB181MA50M	
47,000	89×140	0.30	19.3	EKMH101LGC473MFE0M			220	35×50	0.10	0.90	EKMH315LGB221MA50M	
56,000	89×140	0.30	21.1	EKMH101LGC563MFE0M			270	35×50	0.10	1.00	EKMH315LGB271MA50M	
160	560	35×50	0.15	1.20			EKMH161LGB561MA50M	330	35×50	0.10	1.10	EKMH315LGB331MA50M
	680	35×50	0.15	1.30			EKMH161LGB681MA50M	390	35×50	0.10	1.20	EKMH315LGB391MA50M
	820	35×50	0.15	1.40			EKMH161LGB821MA50M	470	35×60	0.10	1.40	EKMH315LGB471MA60M
	1,000	35×50	0.15	1.60			EKMH161LGB102MA50M	560	35×60	0.10	1.50	EKMH315LGB561MA60M
	1,200	35×60	0.15	1.90			EKMH161LGB122MA60M	680	35×80	0.10	1.70	EKMH315LGB681MA80M
	1,500	35×60	0.15	2.10			EKMH161LGB152MA60M	820	35×80	0.15	1.70	EKMH315LGB821MA80M
	1,800	35×80	0.15	2.50			EKMH161LGB182MA80M	1,000	35×100	0.15	2.00	EKMH315LGB102MAA0M
	2,200	35×80	0.15	2.80			EKMH161LGB222MA80M	1,200	35×120	0.15	2.40	EKMH315LGB122MAC0M
	2,700	35×100	0.15	3.30			EKMH161LGB272MAA0M	1,500	50×80	0.15	2.70	EKMH315LGC152MC80M
	3,300	35×120	0.15	3.80			EKMH161LGB332MAC0M	1,800	50×100	0.15	3.30	EKMH315LGC182MCA0M
	3,900	50×80	0.20	3.80			EKMH161LGC392MC80M	2,200	50×120	0.15	4.00	EKMH315LGC222MCC0M
	4,700	50×100	0.20	4.60			EKMH161LGC472MAA0M	2,700	50×120	0.15	4.40	EKMH315LGC272MCC0M
	5,600	50×100	0.20	5.10			EKMH161LGC562MCA0M	3,300	63.5×100	0.15	5.10	EKMH315LGC332MDA0M
	6,800	50×120	0.20	6.10	EKMH161LGC682MCC0M		3,900	63.5×120	0.15	6.00	EKMH315LGC392MDC0M	
	8,200	63.5×100	0.20	7.00	EKMH161LGC822MDA0M		4,700	76.2×100	0.15	6.80	EKMH315LGC472MEA0M	
	10,000	63.5×120	0.20	8.40	EKMH161LGC103MDC0M		5,600	76.2×120	0.15	8.00	EKMH315LGC562MEC0M	
12,000	76.2×100	0.20	9.40	EKMH161LGC123MEA0M	6,800		76.2×130	0.15	9.20	EKMH315LGC682MED0M		
15,000	76.2×120	0.20	11.4	EKMH161LGC153MEC0M	8,200	89×140	0.15	11.4	EKMH315LGC822MFE0M			
18,000	76.2×140	0.20	13.4	EKMH161LGC183MEE0M	10,000	89×140	0.15	12.6	EKMH315LGC103MFE0M			
22,000	89×140	0.25	14.5	EKMH161LGC223MFE0M	350	180	35×50	0.10	0.80	EKMH351LGB181MA50M		
27,000	89×140	0.25	16.0	EKMH161LGC273MFE0M		220	35×50	0.10	0.90	EKMH351LGB221MA50M		
200	330	35×50	0.15	0.90		EKMH201LGB331MA50M	270	35×50	0.10	1.00	EKMH351LGB271MA50M	
	390	35×50	0.15	1.00		EKMH201LGB391MA50M	330	35×50	0.10	1.10	EKMH351LGB331MA50M	
	470	35×50	0.15	1.10		EKMH201LGB471MA50M	390	35×60	0.10	1.30	EKMH351LGB391MA60M	
	560	35×50	0.15	1.20		EKMH201LGB561MA50M	470	35×60	0.10	1.40	EKMH351LGB471MA60M	
	680	35×50	0.15	1.30		EKMH201LGB681MA50M	560	35×80	0.10	1.60	EKMH351LGB561MA80M	
	820	35×50	0.15	1.40		EKMH201LGB821MA50M	680	35×80	0.15	1.60	EKMH351LGB681MA80M	
	1,000	35×60	0.15	1.70		EKMH201LGB102MA60M	820	35×100	0.15	1.80	EKMH351LGB821MAA0M	
	1,200	35×60	0.15	1.90		EKMH201LGB122MA60M	1,000	35×120	0.15	2.20	EKMH351LGB102MAC0M	
	1,500	35×80	0.15	2.30		EKMH201LGB152MA80M	1,200	50×80	0.15	2.40	EKMH351LGC122MC80M	
	1,800	35×80	0.15	2.50		EKMH201LGB182MA80M	1,500	50×100	0.15	3.00	EKMH351LGC152MCA0M	
	2,200	35×100	0.15	3.00		EKMH201LGB222MAA0M	1,800	50×120	0.15	3.60	EKMH351LGC182MCC0M	
	2,700	35×120	0.15	3.60		EKMH201LGB272MAC0M	2,200	50×120	0.15	4.00	EKMH351LGC222MCC0M	
	3,300	50×80	0.15	4.10		EKMH201LGC332MC80M	2,700	63.5×100	0.15	4.60	EKMH351LGC272MDA0M	
	3,900	50×100	0.15	4.90		EKMH201LGC392MCA0M	3,900	76.2×120	0.15	6.70	EKMH351LGC392MEC0M	
	4,700	63.5×100	0.20	5.30	EKMH201LGC472MDA0M	5,600	76.2×130	0.15	8.30	EKMH351LGC562MED0M		
	5,600	63.5×100	0.20	5.80	EKMH201LGC562MDA0M	6,800	76.2×140	0.15	9.50	EKMH351LGC682MEE0M		
6,800	63.5×120	0.20	6.90	EKMH201LGC682MDC0M	8,200	89×140	0.15	11.4	EKMH351LGC822MFE0M			
8,200	63.5×120	0.20	7.60	EKMH201LGC822MDC0M	400	180	35×50	0.10	0.80	EKMH401LGB181MA50M		
10,000	76.2×120	0.20	9.30	EKMH201LGC103MEC0M		220	35×50	0.10	0.90	EKMH401LGB221MA50M		
12,000	76.2×120	0.20	10.2	EKMH201LGC123MEC0M		270	35×50	0.10	1.00	EKMH401LGB271MA50M		
15,000	76.2×140	0.20	12.2	EKMH201LGC153MEE0M		330	35×60	0.10	1.20	EKMH401LGB331MA60M		
18,000	89×140	0.25	13.1	EKMH201LGC183MFE0M		390	35×60	0.10	1.30	EKMH401LGB391MA60M		
250	270	35×50	0.15	0.80		EKMH251LGB271MA50M	470	35×80	0.10	1.40	EKMH401LGB471MA80M	

◆STANDARD RATINGS

WV (V <sub>dc</sub> )	Cap (μF)	Case size φD×L(mm)	tanδ	Rated ripple current (Arms/105°C,120Hz)	Part No.	WV (V <sub>dc</sub> )	Cap (μF)	Case size φD×L(mm)	tanδ	Rated ripple current (Arms/105°C,120Hz)	Part No.
400	560	35×80	0.15	1.40	EKMH401LGB561MA80M	400	2,200	63.5×100	0.15	4.20	EKMH401LGC222MDA0M
	680	35×100	0.15	1.70	EKMH401LGB681MAA0M		3,300	63.5×120	0.15	5.50	EKMH401LGC332MDC0M
	820	35×120	0.15	2.00	EKMH401LGB821MAC0M		4,700	76.2×130	0.15	7.60	EKMH401LGC472MED0M
	1,000	50×80	0.15	2.20	EKMH401LGC102MC80M		5,600	89×140	0.15	9.40	EKMH401LGC562MFE0M
	1,200	50×100	0.15	2.70	EKMH401LGC122MCA0M		6,800	89×140	0.15	10.4	EKMH401LGC682MFE0M
	1,500	50×120	0.15	3.30	EKMH401LGC152MCC0M						

◆RATED RIPPLE CURRENT MULTIPLIERS

●Frequency Multipliers

Rated voltage (V <sub>dc</sub> )	Case diameter (mm)	Frequency (Hz)					
		50	120	300	1k	10k	50k
10 to 50	φ35 to φ89	0.95	1.00	1.03	1.05	1.09	1.12
63 & 80	φ35	0.90	1.00	1.06	1.10	1.18	1.22
	φ50 to φ89	0.95	1.00	1.03	1.05	1.09	1.12
100	φ35	0.82	1.00	1.12	1.22	1.30	1.33
	φ50	0.90	1.00	1.06	1.10	1.18	1.22
	φ63.5 to φ89	0.95	1.00	1.03	1.05	1.09	1.12
160 to 250	φ35	0.80	1.00	1.19	1.34	1.46	1.52
	φ50 & φ63.5	0.81	1.00	1.14	1.26	1.36	1.41
	φ76.2 & φ89	0.82	1.00	1.12	1.22	1.30	1.33
315 to 400	φ35 to φ89	0.80	1.00	1.19	1.34	1.46	1.52

The endurance of capacitors is reduced with internal heating produced by ripple current at the rate of halving the lifetime with every 5°C rise. When long life performance is required in actual use, the rms ripple current has to be reduced.

Компания «Океан Электроники» предлагает заключение долгосрочных отношений при поставках импортных электронных компонентов на взаимовыгодных условиях!

Наши преимущества:

- Поставка оригинальных импортных электронных компонентов напрямую с производств Америки, Европы и Азии, а так же с крупнейших складов мира;
- Широкая линейка поставок активных и пассивных импортных электронных компонентов (более 30 млн. наименований);
- Поставка сложных, дефицитных, либо снятых с производства позиций;
- Оперативные сроки поставки под заказ (от 5 рабочих дней);
- Экспресс доставка в любую точку России;
- Помощь Конструкторского Отдела и консультации квалифицированных инженеров;
- Техническая поддержка проекта, помощь в подборе аналогов, поставка прототипов;
- Поставка электронных компонентов под контролем ВП;
- Система менеджмента качества сертифицирована по Международному стандарту ISO 9001;
- При необходимости вся продукция военного и аэрокосмического назначения проходит испытания и сертификацию в лаборатории (по согласованию с заказчиком);
- Поставка специализированных компонентов военного и аэрокосмического уровня качества (Xilinx, Altera, Analog Devices, Intersil, Interpoint, Microsemi, Actel, Aeroflex, Peregrine, VPT, Syfer, Eurofarad, Texas Instruments, MS Kennedy, Miteq, Cobham, E2V, MA-COM, Hittite, Mini-Circuits, General Dynamics и др.);

Компания «Океан Электроники» является официальным дистрибьютором и эксклюзивным представителем в России одного из крупнейших производителей разъемов военного и аэрокосмического назначения «**JONHON**», а так же официальным дистрибьютором и эксклюзивным представителем в России производителя высокотехнологичных и надежных решений для передачи СВЧ сигналов «**FORSTAR**».



## JONHON

«**JONHON**» (основан в 1970 г.)

Разъемы специального, военного и аэрокосмического назначения:

(Применяются в военной, авиационной, аэрокосмической, морской, железнодорожной, горно- и нефтедобывающей отраслях промышленности)

«**FORSTAR**» (основан в 1998 г.)

ВЧ соединители, коаксиальные кабели,  
кабельные сборки и микроволновые компоненты:

(Применяются в телекоммуникациях гражданского и специального назначения, в средствах связи, РЛС, а так же военной, авиационной и аэрокосмической отраслях промышленности).



Телефон: 8 (812) 309-75-97 (многоканальный)

Факс: 8 (812) 320-03-32

Электронная почта: [ocean@oceanchips.ru](mailto:ocean@oceanchips.ru)

Web: <http://oceanchips.ru/>

Адрес: 198099, г. Санкт-Петербург, ул. Калинина, д. 2, корп. 4, лит. А