

---

# MultiModem® ZPX

## V.92 Internal Modem

Models:    MT9234ZPX-UPCI  
             MT9234ZPX-UPCI-NV  
             MT9234ZPX-PCle  
             MT9234ZPX-PCle-NV

## User Guide



---

## MultiModem® ZPX User Guide

MT9234ZPX-UPCI, MT9234ZPX-UPCI-NV, MT9234ZPX-PCle, MT9234ZPX-PCle-NV

P/N S000414C, Revision C

All rights reserved. This publication may not be reproduced, in whole or in part, without prior expressed written permission from Multi-Tech Systems, Inc.

Copyright © 2010 by Multi-Tech Systems, Inc.

Multi-Tech Systems, Inc. makes no representation or warranties with respect to the contents hereof and specifically disclaims any implied warranties of merchantability or fitness for any particular purpose. Furthermore, Multi-Tech Systems, Inc. reserves the right to revise this publication and to make changes from time to time in the content hereof without obligation of Multi-Tech Systems, Inc., to notify any person or organization of such revisions or changes. Check Multi-Tech's Web site for current versions of our product documentation.

### **Revision History:**

Revision	Date	Description
A	01/16/08	Initial Release
	05/04/09	Added a link to the Multi-Tech web site for the Multi-Tech warranty and repairs policy.
B	10/06/09	Added 64-bit drivers, Windows 7 support, Japan and Thailand approval statements, and Support Portal link. Updated FCC and EMC statements.
C	06/10/10	Updated installation procedures for Windows Installer program.

### **Trademarks**

MultiModem, Multi-Tech, and the Multi-Tech logo are trademarks of Multi-Tech Systems, Inc.

Microsoft, Windows 2003, XP, Vista, Win7, and Windows Server 2008 are registered trademarks or trademarks of Microsoft Corporation in the United States and/or other countries.

### **Patents**

This device covered by one or more of the following patents: 6,031,867; 6,012,113; 6,009,082; 5,905,794; 5,864,560; 5,815,567; 5,815,503; 5,812,534; 5,809,068; 5,790,532; 5,764,628; 5,764,627; 5,754,589; 5,724,356; 5,673,268; 5,673,257; 5,644,594; 5,628,030; 5,619,508; 5,617,423; 5,600,649; 5,592,586; 5,577,041; 5,574,725; 5,559,793; 5,546,448; 5,546,395; 5,535,204; 5,500,859; 5,471,470; 5,463,616; 5,453,986; 5,452,289; 5,450,425; D353, 598; 5,355,365; 5,309,562; 5,301,274; 7082106; 7082141; 7092406. Other Patents Pending.

### **Contacting Multi-Tech Support**

In order to better serve our customers, manage support requests and shorten resolution times, we have created the online web portal allowing you to submit questions regarding Multi-Tech products directly to our technical support team. Get answers to your most complex questions, ranging from implementation, troubleshooting, product configuration, firmware upgrades and much more.

To create an account and submit a Support Case on the Portal, visit [support.multitech.com](http://support.multitech.com)

### **Online Web Portal**

[support.multitech.com](http://support.multitech.com)

The Knowledge Base provides immediate answers to your questions and gives you access to support resolutions for all Multi-Tech products. Visit our support area on the website for other support services.

### **Knowledge Base and Support Services**

[www.multitech.com/en\\_US/SUPPORT](http://www.multitech.com/en_US/SUPPORT)

### **World Headquarters**

Multi-Tech Systems, Inc.

2205 Woodale Drive

Mounds View, Minnesota 55112

Phone: 763-785-3500 or 800-328-9717

Fax: 763-785-9874

### **Technical Support**

#### **Country**

Europe, Middle East, Africa:

U.S., Canada, all others:

#### **By Email**

[support@multitech.co.uk](mailto:support@multitech.co.uk)

[support@multitech.com](mailto:support@multitech.com)

#### **By Phone**

+(44) 118 959 7774

(800) 972-2439 or (763) 717-5863

### **Warranty**

To read the warranty statement for your product, please visit:

[http://www.multitech.com/en\\_US/COMPANY/Policies/warranty/](http://www.multitech.com/en_US/COMPANY/Policies/warranty/)

# Contents

<b>CHAPTER 1 – DESCRIPTION AND SPECIFICATIONS</b>	<b>4</b>
PRODUCT DESCRIPTION	4
Features	4
Package Contents	4
AT COMMAND INFO	4
TECHNICAL SPECIFICATIONS	5
<b>CHAPTER 2 – INSTALLATION</b>	<b>6</b>
GENERAL SAFETY	6
WINDOWS INSTALLER	6
PHYSICALLY INSTALLING YOUR MULTIMODEM	8
MAKE THE EXTERNAL CONNECTIONS	9
Line Connection	9
Phone Connection (Optional)	9
Microphone/Headphone Connection (Optional)	9
MANUALLY INSTALLING DRIVERS	10
DRIVER INSTALLATION FOR WINDOWS 7	11
DRIVER INSTALLATION FOR VISTA AND WINDOWS 2008 OPERATING SYSTEMS	21
Preliminaries	21
Driver Installation of your PCI Serial Port	21
Installation of the Communications Port	24
Installation of the Modem	26
DRIVER INSTALLATION FOR WINDOWS XP AND 2003 OPERATING SYSTEMS	29
Preliminaries	29
Installation of the Serial Port	29
Installation of the Communications Port	33
Installation of the Modem	37
CONFIGURE THE MODEM FOR YOUR COUNTRY	42
Using the Global Wizard to Configure Your Modem	42
Using AT Commands to Configure Your Modem	42
<b>CHAPTER 3 – REMOTE CONFIGURATION</b>	<b>43</b>
BASIC PROCEDURE	43
Setup	43
To Change the Setup Password	43
To Change the Remote Escape Character	43
<b>CHAPTER 4 – TROUBLESHOOTING</b>	<b>44</b>
The Modem Does Not Respond to Commands	44
The Modem Cannot Connect When Dialing	45
The Modem Disconnects While Online	46
The Modem Cannot Connect When Answering	46
File Transfer Is Slower Than It Should Be	46
Data Is Being Lost	47
There Are Garbage Characters on the Monitor	47
The Modem Doesn't Work with Caller ID	47
Fax and Data Software Can't Run at the Same Time	47
The Voice Functions Don't Work	47
Voice Mail Test	47
Loopback Test	48
Speakerphone Test (with voice option)	48
<b>APPENDIX A – ENVIRONMENTAL INFORMATION</b>	<b>49</b>
<b>APPENDIX B – REGULATORY COMPLIANCE</b>	<b>52</b>
<b>APPENDIX C – UPGRADING YOUR MODEM</b>	<b>56</b>
<b>APPENDIX D – INSTALLING IN LINUX</b>	<b>58</b>
<b>INDEX</b>	<b>61</b>

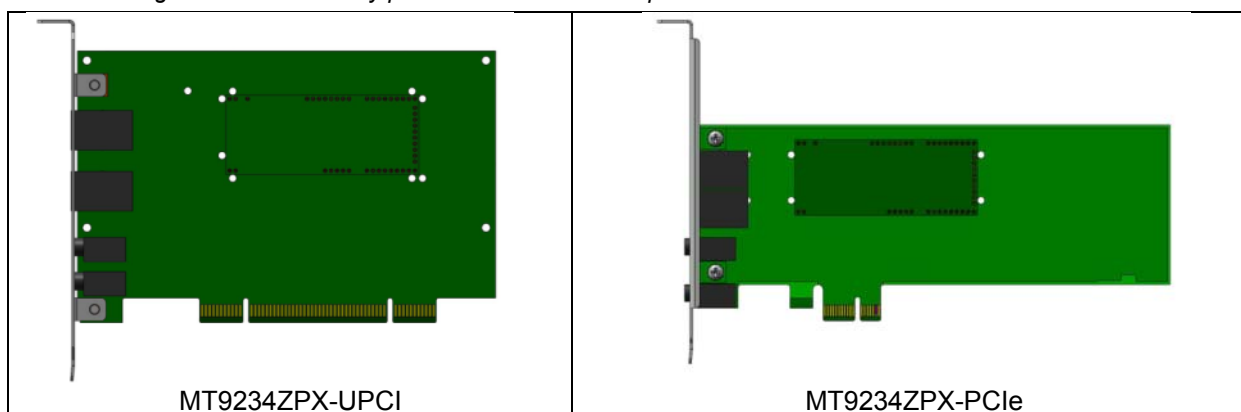
## Chapter 1 – Description and Specifications

### Product Description

The Multi-Tech MultiModem ZPX is an internal universal PCI bus card, MT9234ZPX-UPCI or a PCI Express bus card, MT9234ZPX-PCIE. The UPCI card operates in either 3.3 or 5V slot. The PCI Express card operates in a 3.3V slot.

The MultiModem provides high-speed data transfer and fax capabilities for small businesses, telecommuters, and SOHO users. It is compatible with the IUT-T V.92 protocol that provides quick connections, downstream transmissions at speeds up to 56K bps\*, and upstream transmissions speeds up to 48K bps when connected to V.92-compatible Internet service providers. Transmissions between the MultiModem and other client modems are limited to 33.6K bps, as are upstream transmissions to non-V.92-compatible ISPs and downstream transmissions that are converted more than once on the telephone network.

*\* Though this modem is capable of 56K bps download performance, line impairments, public telephone infrastructure, and other external technological factors currently prevent maximum 56K bps connections.*



### Features

- V.92/56K download speeds and 48K upload speeds when connecting with V.92 servers
- V.44 compression improves data throughput rates
- Class 1.0 and Class 2.1 faxing at speeds to V.34/33.6K bps (Super G3)
- Error Correction Mode (ECM) provides fast and reliable fax transmissions
- Voice support for voice mail and full duplex speakerphone (voice models only)
- U.S. Caller ID reporting
- Global approvals in many countries for worldwide use
- Telco adapters available for country localization
- Built-in processor that does the work, so your computer doesn't have to
- Remote configuration for centralized setup and management
- DTMF tone detection
- Flash memory for easy updates
- Two-year warranty

### Package Contents

- one MultiModem
- one RJ-11 telephone cable
- one Quick Start Guide
- one product CD
- One low profile mounting bracket (MT9234ZPX-PCIE models only)

### AT Command Info

AT commands for the wireless modem are published in a separate Reference Guide included on the product CD and posted on the Multi-Tech web site.

## Technical Specifications

<b>Category</b>	<b>Description</b>
<b>Receiver AGC Dynamic Range</b>	43 dB
<b>Data Compatibility</b>	V.92, V.34 enhanced, V.34, V.32bis, V.32, V.22bis, V.22; Bell 212A and 103/113, V.21 & V.23
<b>Data Format</b>	Serial, binary, asynchronous
<b>Error Correction (ECM)</b>	<b>Data Mode</b> V.44; V.42 LAPM, MNP 2-4 <b>Fax Mode</b> T.30 Annex A & C
<b>Data Compression</b>	V.42bis & MNP Class 5
<b>Fax Compatibility</b>	V.34, V.17, V.29, V.27, & V.21 Ch. 2
<b>Fax Classes</b>	Class 1 & 1.0 and Class 2, 2.0 & 2.1
<b>Fax Data Rates</b>	33,600; 31,200; 28,800; 26,400; 24,000; 21,600; 19,200; 16,800; 14,400; 12,000; 9600; 7200; 4800; 2400; 1200; 0-300 bps
<b>Fax Compression</b>	MH, MR, MMR
<b>Command Buffer</b>	80 characters
<b>DAA Isolation</b>	1500 Vac
<b>Dimensions</b>	UPCI – 6.03" L X 4.76" W 15.31 cm L x 12.09 cm W PCIe with Standard Bracket – 7.13" L x 4.76" W 18.11 cm L x 12.09 cm W PCIe with Low Profile Bracket – 7.13" L x 3.16" W 18.11 cm L x 8.02 cm W
<b>Flow Control</b>	XON/XOFF (software), RTS/CTS (hardware)
<b>Frequency Stability</b>	±0.01%
<b>Modes of Operation</b>	Fax online mode; full duplex over dial-up lines; data mode; command mode; online command mode; V.54 test mode
<b>Operational Temperature</b>	-5 to +60° C (23° to 140°F) humidity range 20–90% (non-condensing)
<b>Storage Temperature</b>	-40 to +85°C (-40° to 185° F)
<b>Power Requirements</b>	3.3 or 5 volt slot (Universal PCI) 3.3 volts (PCI Express)
<b>Voice Compatibility</b>	TAM (Telephone Answering Machine): S-101 AT+V commands (no CODEC for speakers/microphone interface)
<b>Serial Speeds</b>	Serial port data rates adjustable to 300, 1200, 2400, 4800, 9600, 19,200, 38,400, 57,600, 115,200, and 230,400 bps
<b>Transmit Level</b>	-11 dBm (varies by country setting)
<b>Receiver Sensitivity</b>	-43 dBm under worst-case conditions
<b>Cleaning</b>	No cleaning/washing due to the manufacturing process used to produce this product.
<b>Manufacturing Information</b>	Trade Name: MultiModem® ZPX Model Number: MT9234ZPX Registration No: AU7MM01BMT9234SMI Ringer Equivalence: 0.1B Modular Jack (USOC): RJ11
<b>Approvals</b>	<b>CE Mark</b> <b>Telecom</b> 47CFR Part 68 CS03 TBR21 <b>Safety Certifications</b> UL/cUL 60950-1 EN60950-1 AS/NZS 60950:2000 CCC <b>EMC Approvals</b> FCC Part 15, Class B ICES-003, Class B EN 55022, Class B EN 55024

## Chapter 2 - Installation

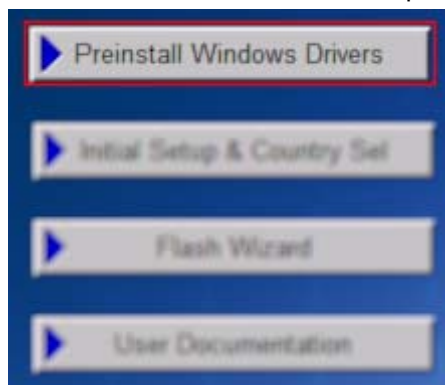
### General Safety

- Use this product only with UL- and CUL-listed computers (U.S.A.)
- To reduce the risk of fire, use only UL-listed 26 AWG (.41mm) or larger telephone wiring.
- Never install telephone wiring during a lightning storm.
- Never install a telephone jack in a wet location unless the jack is specifically designed for wet locations.
- Never touch uninsulated telephone wires or terminals unless the telephone line has been disconnected at the network interface.
- Use caution when installing or modifying telephone lines.
- Avoid using a telephone during an electrical storm; there is a risk of electrical shock from lightning.
- Do not use a telephone in the vicinity of a gas leak.
- The telephone cord is to be disconnected before accessing the inside of the equipment.

### Windows Installer

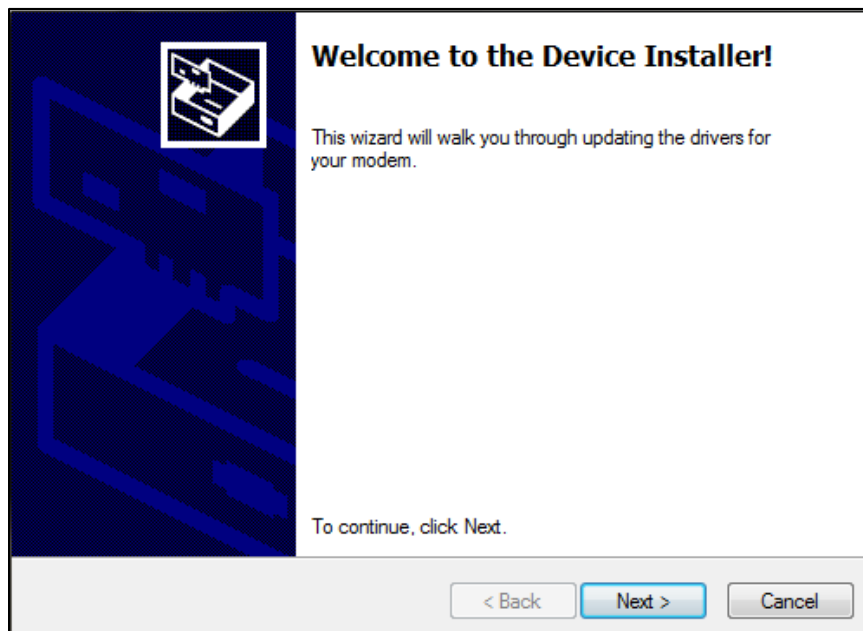
Your product CD contains an installer program for current Windows operating systems (Windows XP and newer only) that should be used **before** installing your modem. Should you happen to install your modem before using the installer program, please follow the directions in the following sections for your particular version of Windows.

1. Insert the product CD into a compatible drive. Do **not** install your MultiModem ZPX yet.
2. Click on the **Preinstall Windows Drivers** button from the main splash screen of the CD.

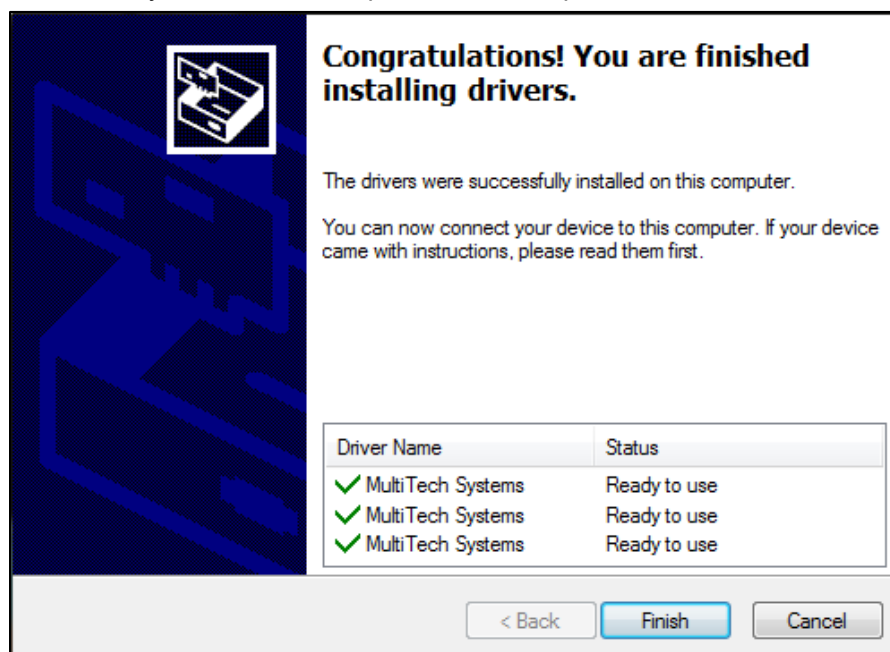


3. Click the button that matches your operating system [32-bit or 64-bit]. You can see what type of system you are using from the *Control Panel | System* screen.
  - a. Windows may pop-up a User Account Control window. Select the YES button to continue with the driver installation.

- Click on the next button to start the driver pre-installation.



- You will be prompted 3 times to confirm the installation of the three necessary drivers. Click the **Install** button to continue each time.
- There will be a transitory screen, then the process will complete. Click on the **Finish** button.



- Your driver installation is complete.
- You can now shut down the PC, unplug the power cord and physically install your modem per the instructions found in the next section "Physically Installing your MultiModem".
- After the hardware installations, Windows will detect the ZPX as installed and complete the process.

## Physically Installing your MultiModem

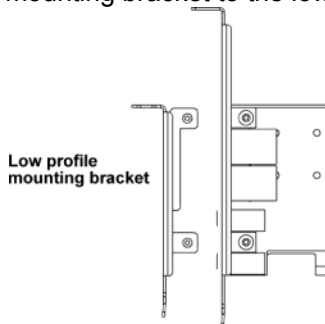
- Installing the MultiModem requires you to open your system. Please consult your system manual in addition to the following instructions.
- Turn off your system and unplug it. Failure to do so may result in damage to both the MultiModem and your system. Do not turn on the system until the instructions tell you to do so.



- Remove the cover from your system as instructed in the system manual. Before handling the MultiModem ZPX, discharge any static in your body by touching a piece of grounded metal such as the computer chassis. Electrostatic discharge (ESD) is the release of stored static electricity that can damage electrical circuitry or components. Static electricity is often stored in your body, and discharged when you come in contact with an object of a different potential.



- Perform the procedure below described in this section only at an ESD workstation using an antistatic wrist strap. If such a station is not available, you can provide some ESD protection by wearing an antistatic wrist strap and attaching it to a metal ground screw (lug).
- If you are installing a MT9234ZPX-PCIe board in a low profile machine, you will need to change the mounting bracket to the low profile mounting bracket.

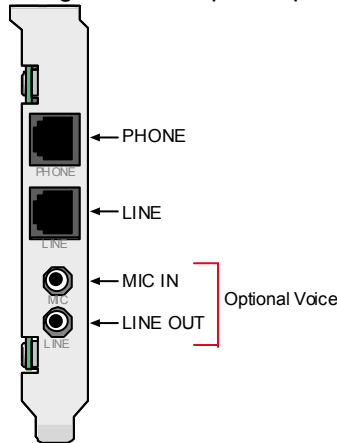


- Select an empty PCI expansion slot. Remove the expansion slot cover and save the retaining screw.
- Before handling the MultiModem, discharge static in your body by touching a piece of bare metal on the chassis. Carefully remove the MultiModem from its antistatic bag, handling it only by the mounting bracket and edges. Do not touch the gold-plated connectors along the bottom edge.
- Look at the system's main board to determine either PCI or Express connector. Place the MultiModem directly above the expansion slot and gently, but firmly, push it into the connector until the card's retaining bracket is flush against the system chassis.
- Fasten the retaining bracket to the system chassis with the screw saved in step 4.
- Replace the system cover.



## Make the External Connections

Now connect the MultiModem to the telephone line and, optionally, to your telephone. For voice mail or speakerphone use, you can also connect it to a microphone and an external speaker, headphone, or sound card. The microphone can be used for recording answering machine messages or for speakerphone use. The speaker or headphone can be used for playing back messages or as a speakerphone.



### Line Connection

Plug one end of the provided telephone cable into the modem's LINE jack, and the other end into a telephone wall jack. This is the only required connection.

**Note:** The LINE jack is not interchangeable with the PHONE jack. Do not plug the phone into the LINE jack or the line cable into the PHONE jack.

**Note:** The Federal Communications Commission (FCC) and Industry Canada impose certain restrictions on equipment connected to public telephone systems.

### Phone Connection (Optional)

If you wish to connect a telephone to the same line as the modem, plug it into the modem's PHONE jack.

**Note:** The PHONE jack is not interchangeable with the LINE jack. Do not plug the phone into the LINE jack or the line cable into the PHONE jack.

### Microphone/Headphone Connection (Optional)

For voice mail or speakerphone applications, plug an unamplified microphone into the MIC jack. The microphone and headphone should have a stereo 3.58mm (9/64-inch) mini plug. Do not use a monophonic microphone.

Sound Card and Speaker Connections (If you have the Voice Option)

For voice mail or speakerphone applications, use a 3.58mm (9/64-inch) plug male-to-male stereo patch cord to connect the LINE OUT jack on the modem to the LINE IN jack on your sound card. If your sound card does not have a LINE IN jack, use its MIC jack.

This will allow you to hear modem activity whether it is originating or answering a call, or playing a recorded message. If you do not have a sound card, you can plug an amplified speaker into the LINE OUT jack.

## Manually Installing Drivers

If you choose not to use the Windows Installer or have already physically installed your MultiModem ZPX, the following instructions will guide you through the process of installation for the various Windows operating systems. The MultiModem MT9234ZPX ships with drivers for each of the following operating systems: Windows Server<sup>®</sup> 2008, Windows<sup>®</sup> 7, Vista, XP, 2003, 2000 Server, 2000 Advanced Server, and Linux. This chapter describes the installation of these drivers. You may need to configure your modem for your country/region, the procedure for doing this is at the end of this chapter.

Installing a device driver modifies your system. For this reason, only the *super user* (system administrator) is allowed to perform the installation. If you cannot login as **administrator**, find the person in your organization with this authorization (i.e., password). To begin driver installation, login as **administrator**. Then proceed with the appropriate installation section in this chapter.

**Windows Drivers:** The MultiModem MT9234ZPX driver must be installed in your computer's program directory. The Windows drivers are located on the MultiModem MT9234ZPX CD in the Drivers folder. A complete set of drivers for each operating system is organized into Vista-2008-Win7 and XP-2003 with either 32-bit or 64-bit processor. Most users will select either the 32-bit Vista-2008-Win7 or 32-bit XP-2003 drivers. Server users can select either 32-bit or 64-bit depending on their application. For server users to determine whether they have a 32-bit or 64-bit operating system, go to **Start | All Programs | Accessories | System Tools | Computer** and click on the **System Properties** button. Under **System** you will see **System Type: 64-bit Operating System**.

**Linux Drivers:** Linux Operating System drivers are also located on the CD in the **Drivers | Linux Folder**. Refer to the Readme file (also in the Linux directory) for the correct driver file and installation guide for your distribution/version of Linux. If you use a Linux operating system, please refer to Appendix D in the User Guide for installation instructions.

**Overview of Windows Driver Installation:** Three install wizards guide you through the software Installation in this order:

**Part A** installs serial port.

**Part B** associates the Communications port with the PCs serial port, and finally

**Part C** installs the modem driver.

## Driver Installation for Windows 7

*If you did not use the pre-installer for Windows, this is the process for installing your modem.*

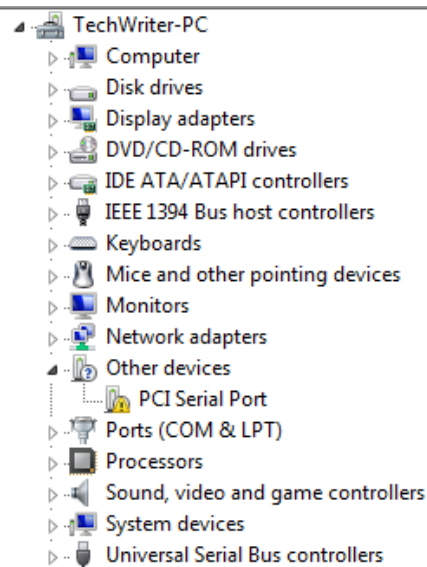
The following driver installation procedure is based on Windows 7 32-bit Operating System. The Windows 7 64-bit Operating System installs in the same manner.

Windows 7 operates differently than the older Microsoft Operating Systems when it is installing drivers, in that it goes out to Internet Windows Update site and searches for the device driver as soon as it detects a new device. This is done in the background so you don't even see it is happening. When it does not detect the driver for the new device, it returns control to you. This is represented in the display of the desk top. In order to get the install going you have to bring up Control Panel.

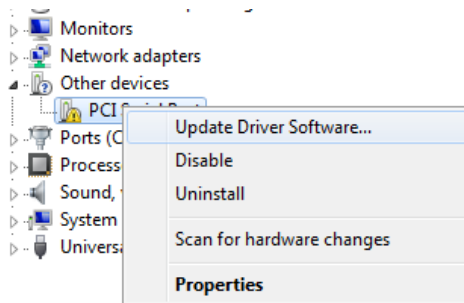
### Card Driver Installation

This wizard installs the files for the MultiModem ZPX.

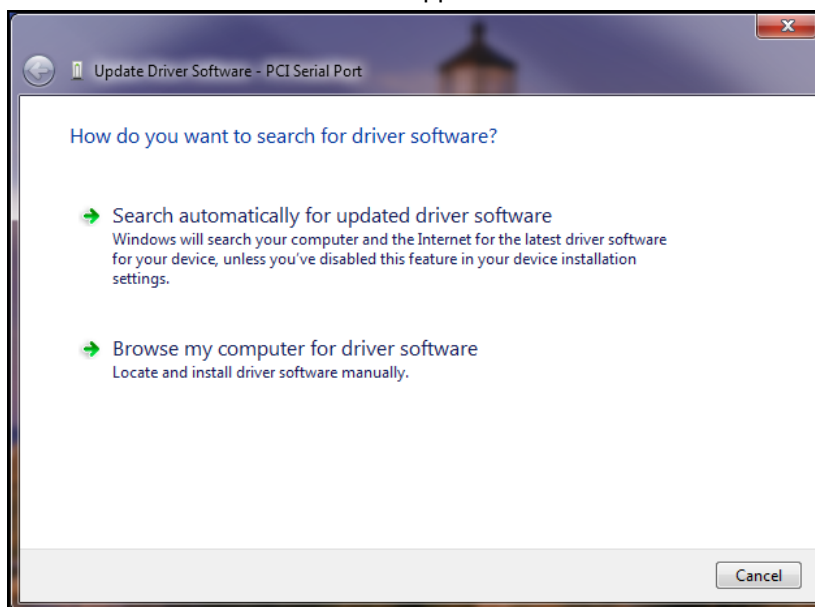
1. Power up your computer. Windows 7 goes out to Microsoft Windows Update and searches for the device driver for the product it detected during the boot up sequence.
2. Go to **Start | Control Panel | System and Security | System** and click on **Device Manager**.



Click on **PCI Serial Port** and then **right click**. A submenu comes up; now click on **Update Driver Software**.

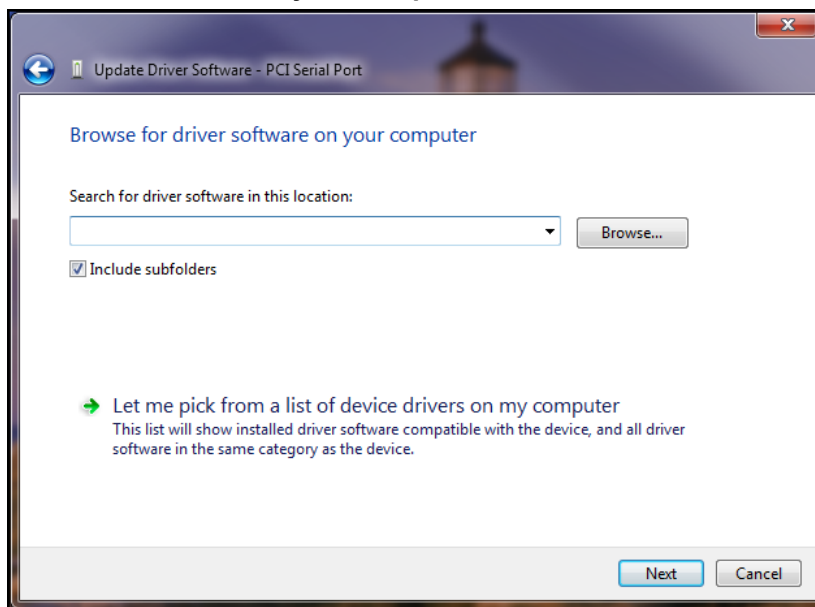


3. Update Driver Software – PCI Serial Port screen appears.



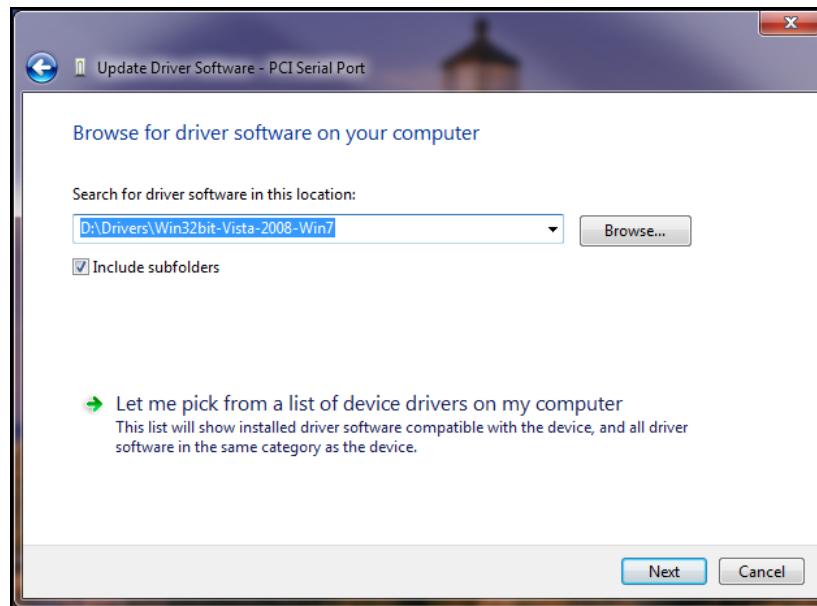
Select **Browse my computer for driver software**

4. Insert the product CD that came with your device into the CD-ROM drive.
5. At the **Browse for driver software on your computer** screen.



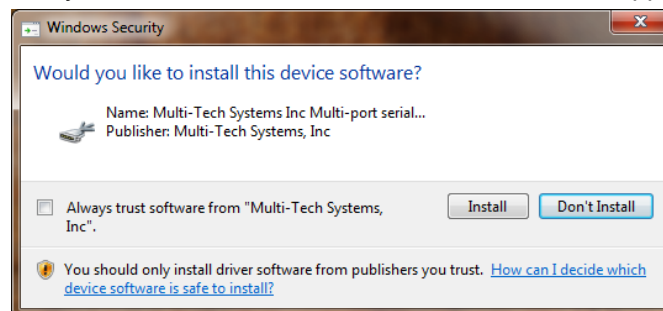
Click **Browse**. Browse to the Drivers folder on your on your product CD, then select the Drivers folder. Within the Drivers folder, select Win32bit-Vista-2008-Win7 folder.

If you are installing drivers for a Vista 64-bit Operating System, you would browse to the Win64bit-Vista-2008-Win7 folder.



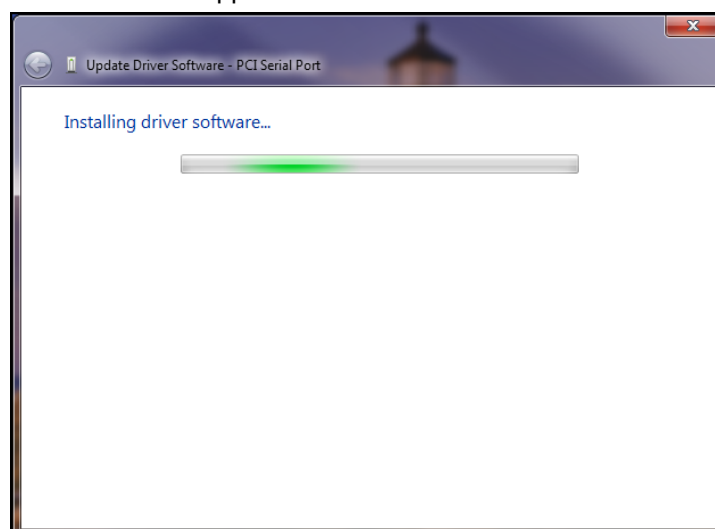
Click **Next**.

6. Windows Security 'Would you like to install this device software?' screen appears.

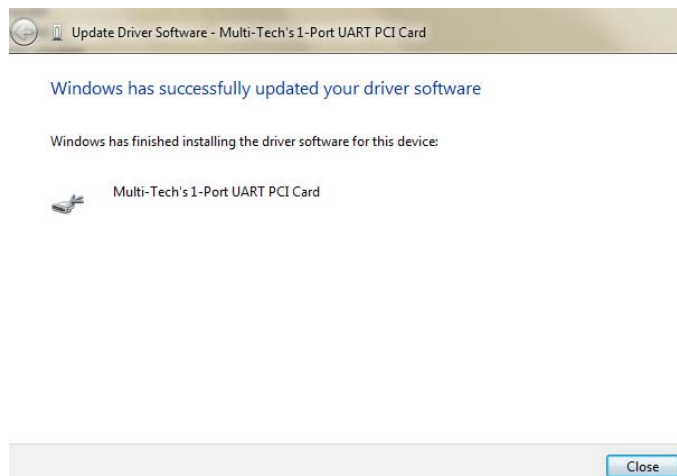


Click **Install**.

7. Installing driver software on screen appears.



8. When the software for this device has been updated. The Windows screen **Multi-Tech 9234ZPX** is displayed.



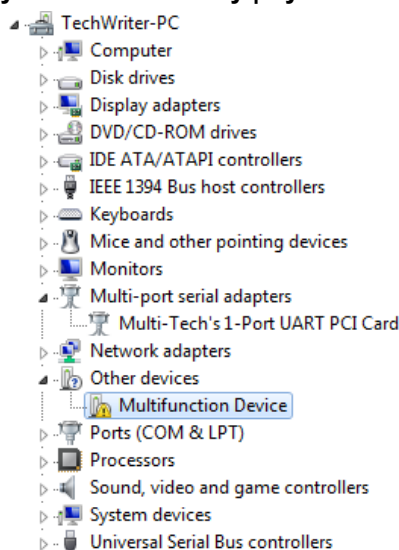
Click **Close**.

Continue to the next section for the completion of the installation.

### Windows 7 Port Installation

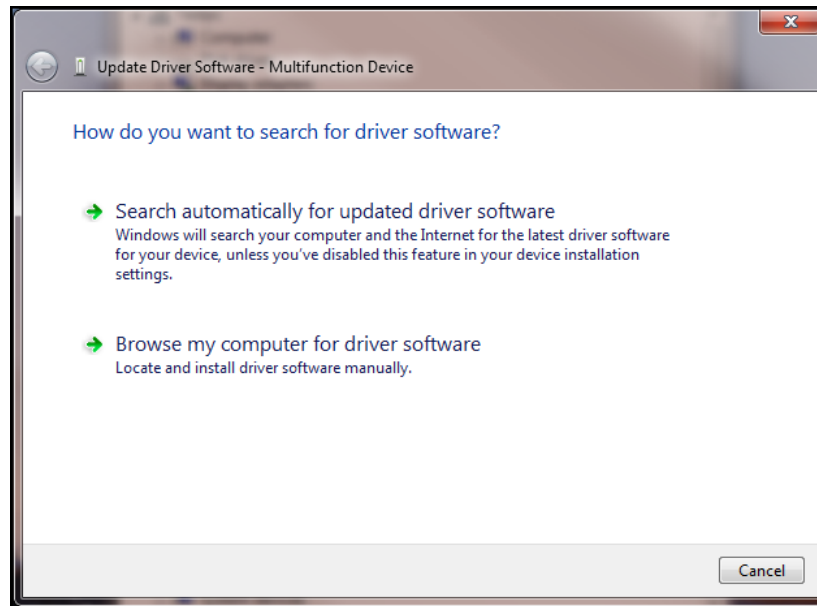
Immediately after the MultiModem ZPX driver installation is complete, another set of installation wizard screens will appear. With this installation wizard, you will install the port and modem into the computer's operating system and then associate the modem with its port.

1. Go to **Start | Control Panel | System and Security | System** and click on **Device Manager**.



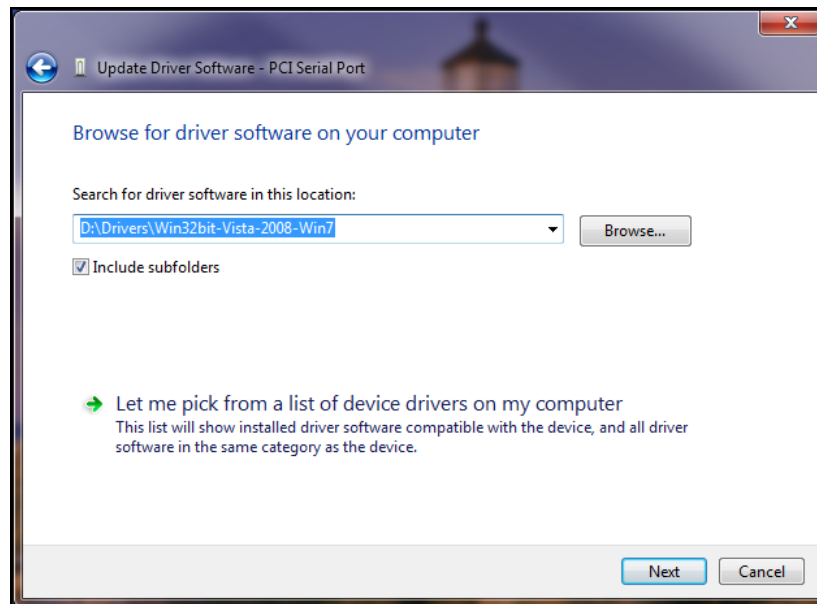
**Right-Click** on the **PCI Serial Port** in **Other devices** and a submenu will come up; now click on **Update Driver Software**.

2. Update Driver Software – PCI Serial Port screen appears.



Select **Browse my computer for driver software**

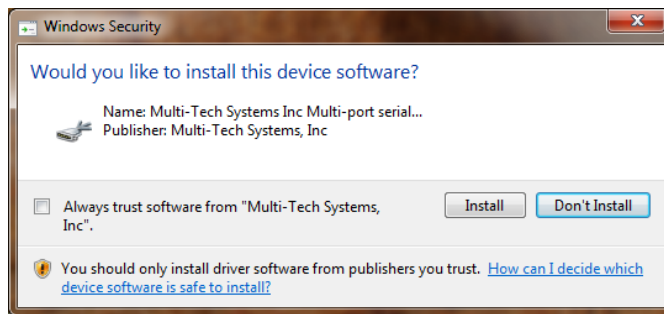
3. At the **Browse for driver software on your computer** screen, click on the **Browse** button to open an Explorer window where you can navigate to the correct drivers folder that matches your operating system. Select that folder and click **OK**.



Example: If you are installing drivers for a Windows 7 64-bit Operating System, you would browse to the Win64bit-Vista-2008-Win7 subfolder.

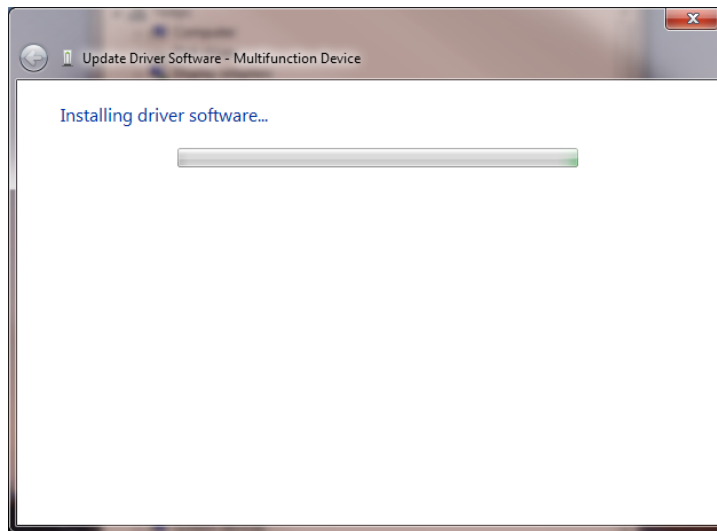
Click **Next**.

4. The Windows Security 'Would you like to install this device software?' screen appears.

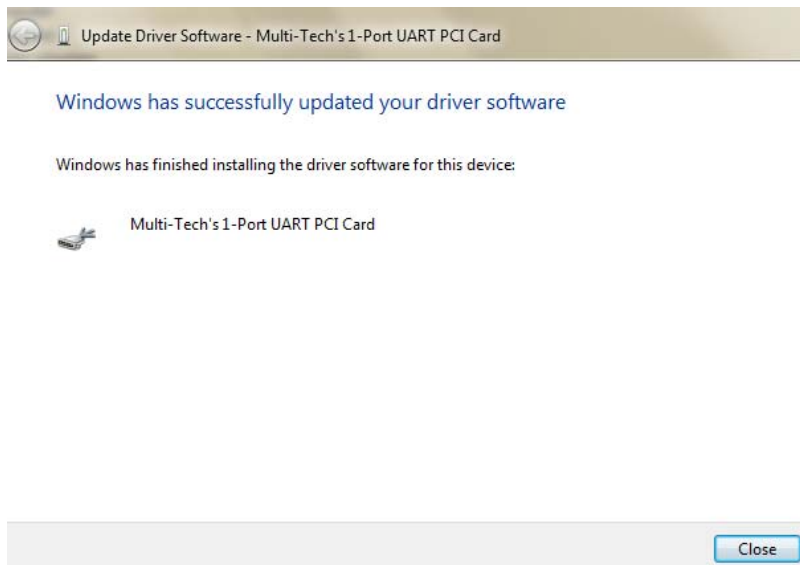


Click **Install**.

5. Installing driver software on screen appears.



6. When the software for this device has been updated. The Windows screen **Updated Driver Software** is displayed.



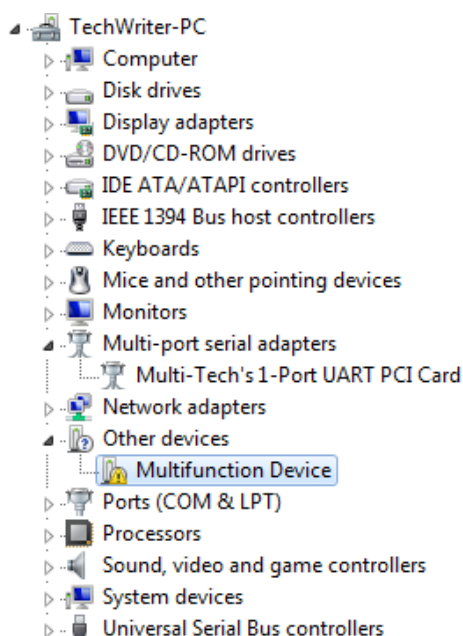
Click **Close**.

The port is now ready to have a number assigned to it – proceed with the installation instructions found below.



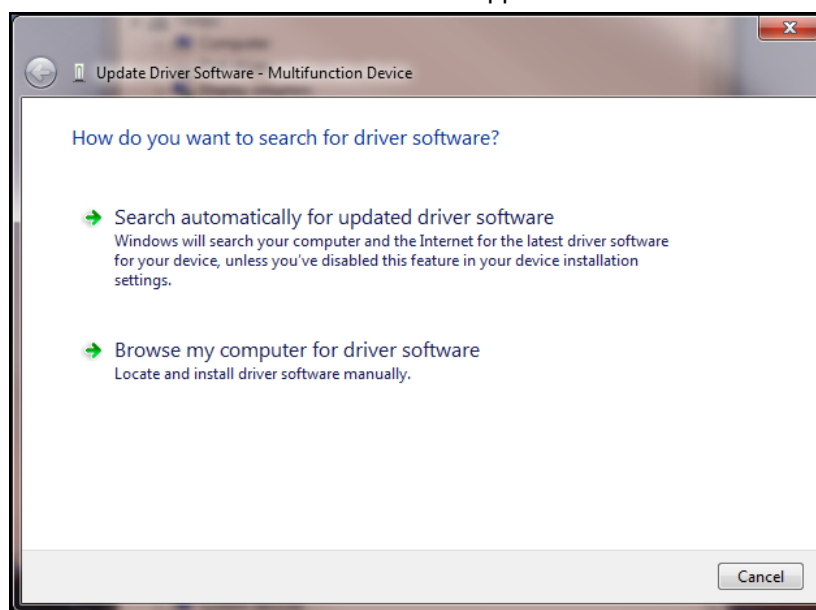
### Installation of the COM port

The **Device Manager** window will still be open (unless you have closed it – then you will need to open it again) and there is a new entry in **Other devices**: *Multifunction Device*.



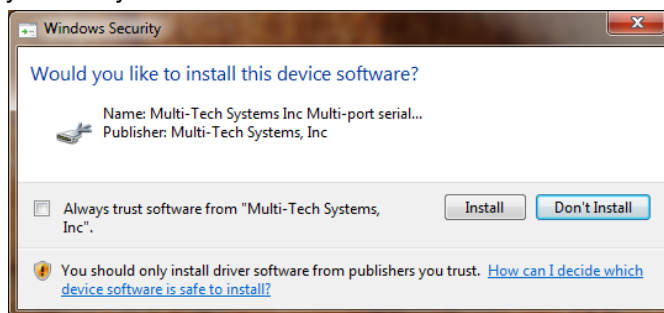
1. **Right-Click** on the **Multifunction Device** in **Other devices** and a submenu will come up; now click on **Update Driver Software**.

Update Driver Software – Multifunction Device screen appears.



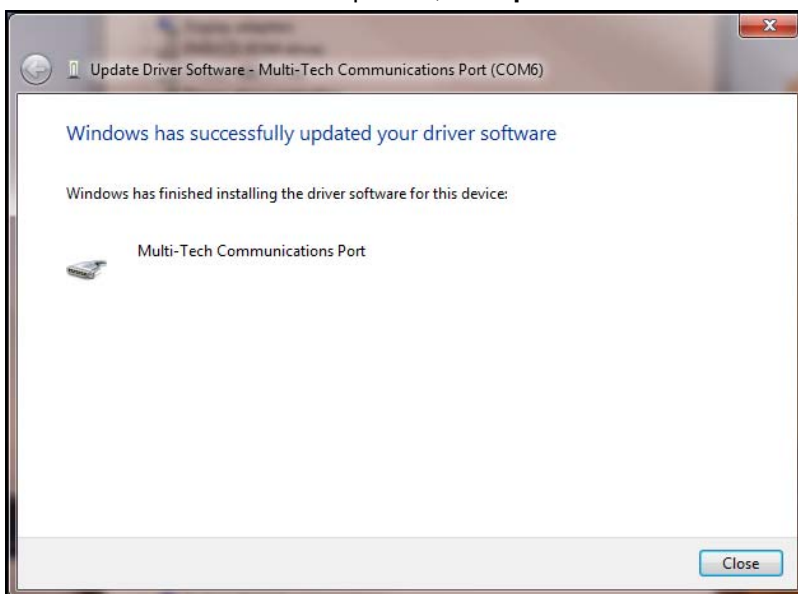
2. Select **Browse my computer for driver software** and select the folder appropriate for your operating system, then click **Next**.

3. The Windows Security 'Would you like to install this device software?' screen appears.



Click the **Install** button to continue.

4. When the software for this device has been updated, the **Updated Driver Software** window is displayed.

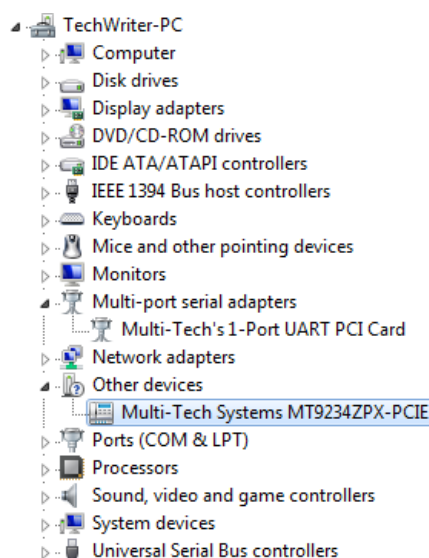


Click **Close**.

The port is now ready to have the modem installed to it – proceed with the installation instructions found below.

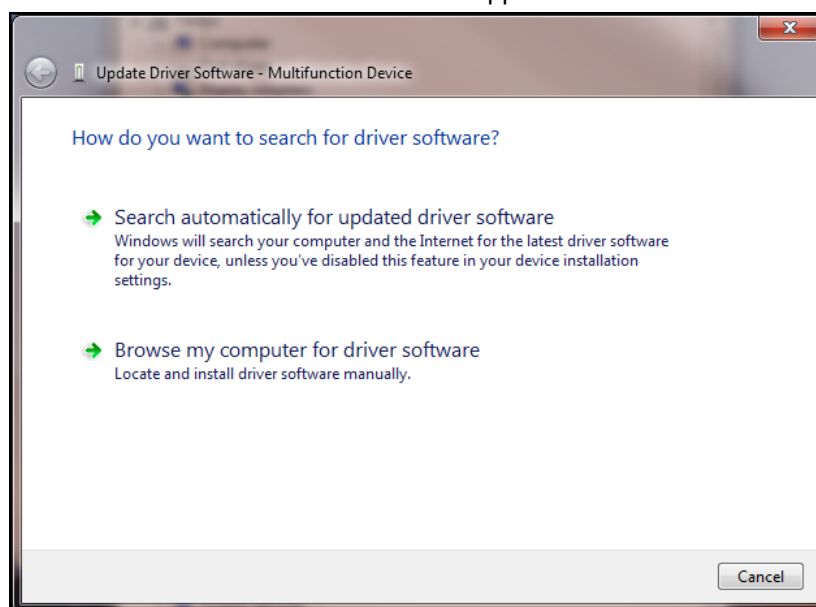
### Installation of the modem

The **Device Manager** window will still be open (unless you have closed it – then you will need to open it again) and there is a new entry in **Other devices**: *MultiTech System's MT9234ZPX*.



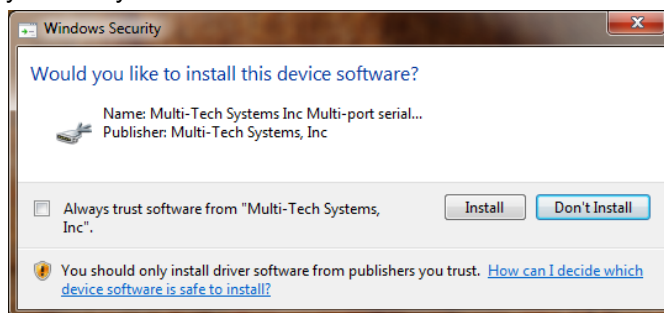
1. **Right-Click** on the **MultiTech System's MT9234ZPX** in **Other devices** and a submenu will come up; now click on **Update Driver Software**.

Update Driver Software – Multifunction Device screen appears.



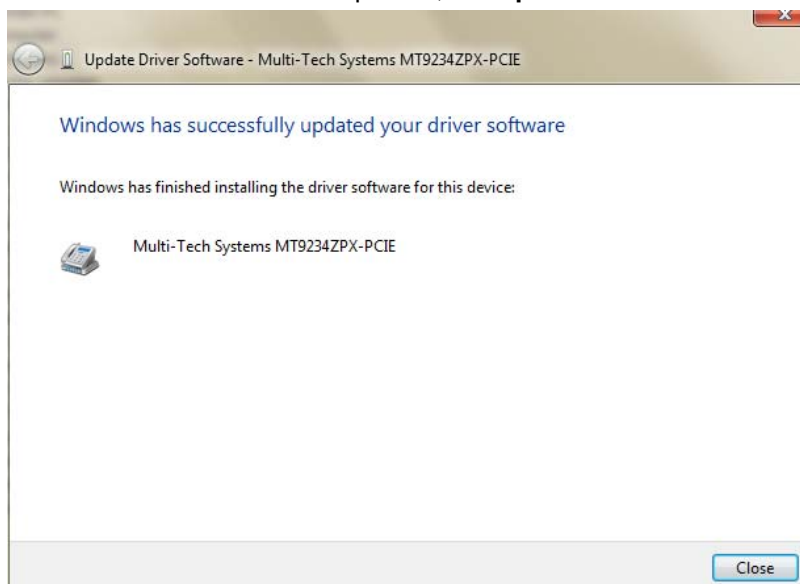
2. Select **Browse my computer for driver software** and select the folder appropriate for your operating system, then click **Next**.

3. The Windows Security 'Would you like to install this device software?' screen appears.



Click the **Install** button to continue.

4. When the software for this device has been updated, the **Updated Driver Software** window is displayed.



Click **Close**.

You may also close the Device Manager and Control Panel windows.

### **Completion**

Software installation for the MultiModem ZPX is complete. You may need to configure the modem for your country/region, refer to '*Configure the modems for your Country*' at the end of this chapter.

## Driver Installation for Vista and Windows 2008 Operating Systems

*If you did not use the pre-installer for Windows, this is the process for installing your modem.*

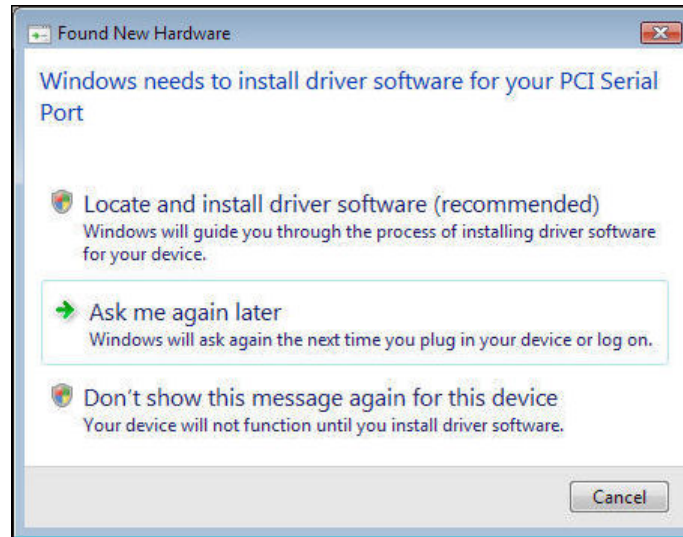
The MT9234ZPX driver installation is done in three parts, each directed by an installation wizard. The three parts are installation of the: (1) Serial Port, (2) Communications Port, and (3) the modem.

### Preliminaries

1. Power up your computer.
2. Windows will detect that the new modem is present.

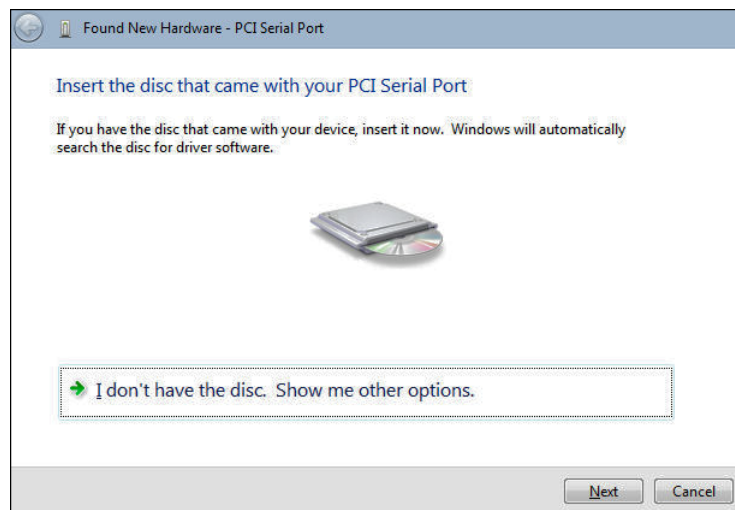
### Driver Installation of your PCI Serial Port

3. The **Found New Hardware** screen appears with Windows needs to install driver software for your PCI Serial Port.



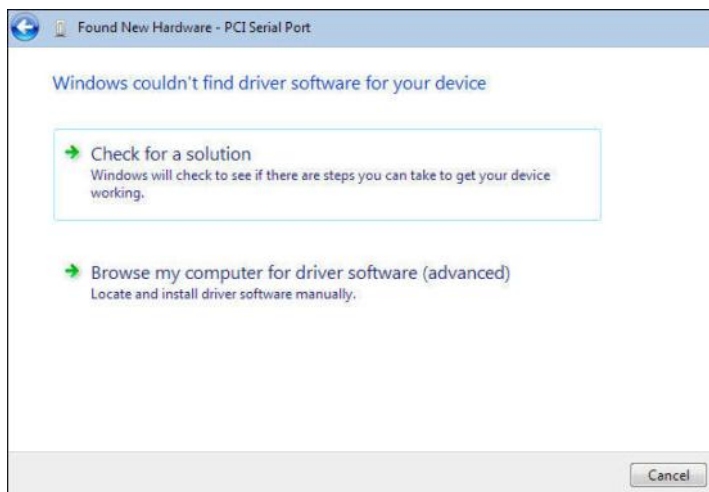
Click on **Locate and install driver software (recommended)**. Windows will guide you through the process of installing driver software for your device.

4. The **User Account Control – Windows needs your permission to continue** screen appears. Click **Continue**.
5. The next screen prompts you to **insert the disc that came with your PCI Serial Port**. If you have the disc that came with your device, insert it now.



Click on **I don't have the disc. Show me other options**. Click **Next**.

6. **Windows couldn't find driver software for your device** screen appears. Choose **Browse my computer for driver software (advanced)**.



7. At the **Browse for driver software on your computer** screen.



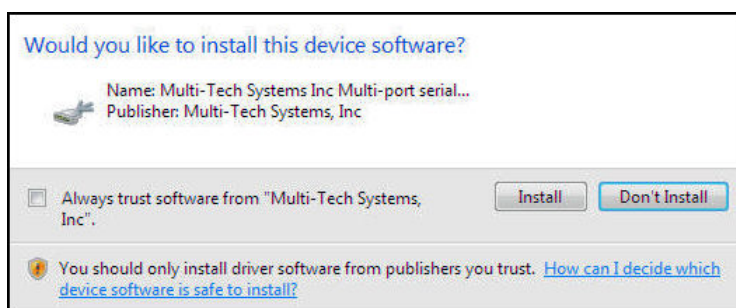
Click **Browse**. Browse to the Drivers folder on your MultiModem ZPX product CD and select the **Drivers** folder. Within the Drivers folder, select **Win32bit-Vista-Win7** folder for a Windows 32-bit Operating System.

If you are installing drivers on a Windows 64-bit Operating System, select **Win64bit-Vista-Win7** folder.



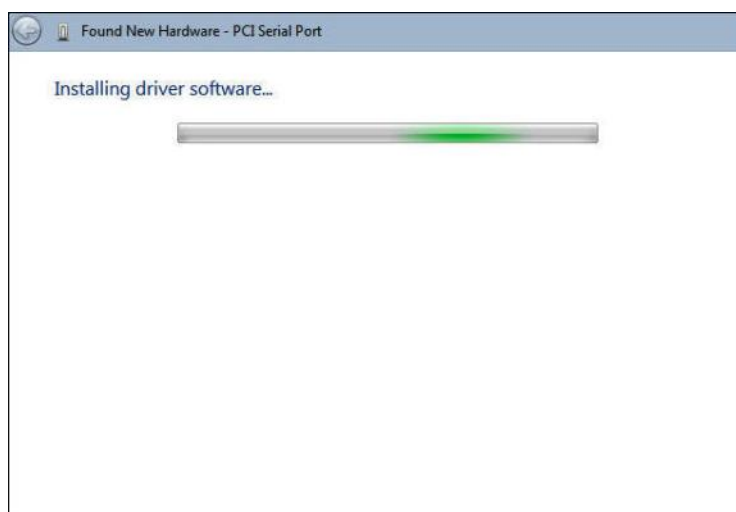
Click **Next**.

8. **Would you like to install this device software?** screen appears.

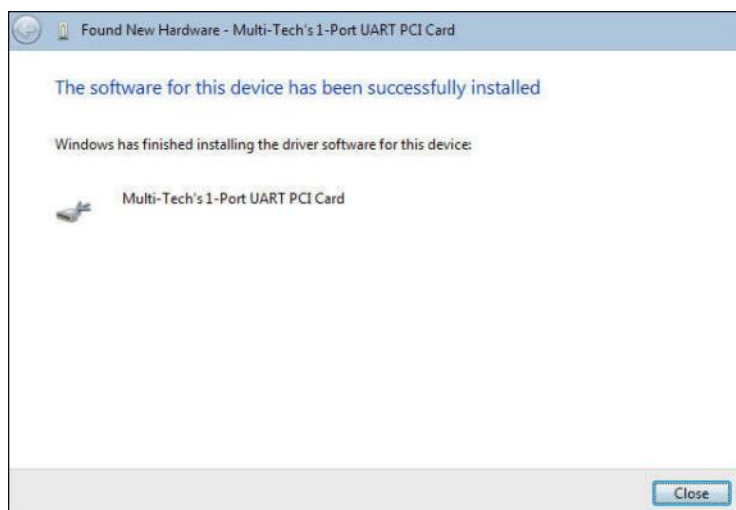


Click **Install**.

9. Installing driver software on **PCI Serial Port** screen appears.



10. When the software for this device has been successfully installed screen appears with Windows has finished installing the driver software for this device: **Multi-Tech's 1-Port UART PCI Card**.



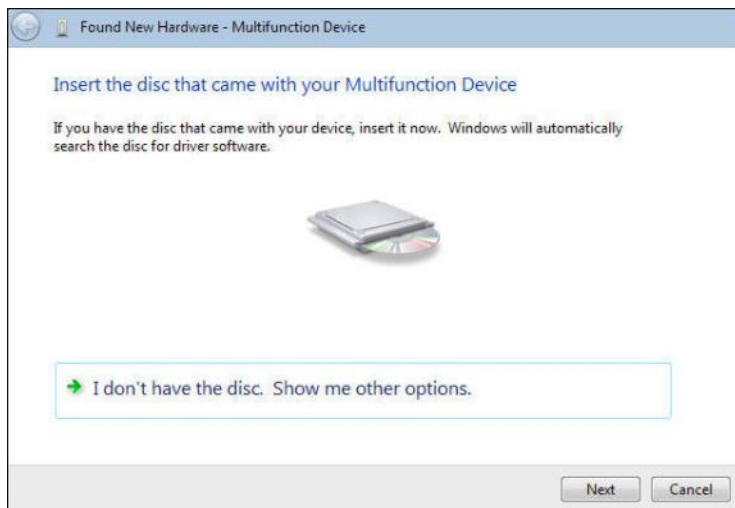
Click **Close**.

This completes the installation of the drivers for the serial port.

## Installation of the Communications Port

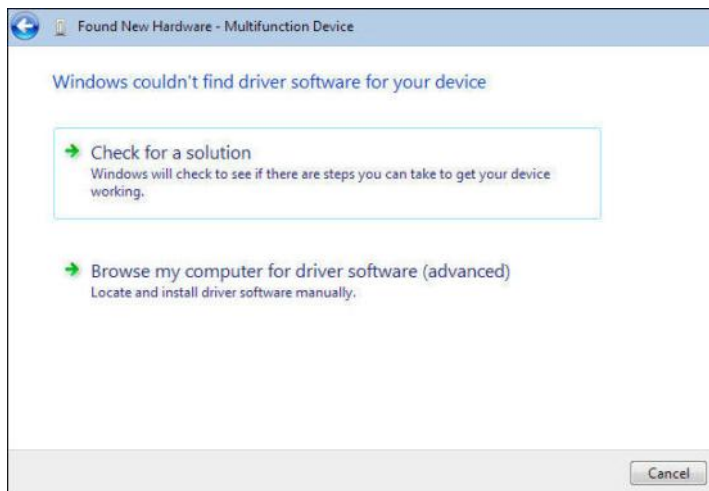
The second install wizard installs the drivers for the Multifunction Device, Multi-Tech Communications Port

1. The **Found New Hardware – Multifunction Device** with Insert disc that came with your Multifunction Device screen appears.



Click on **I don't have the disc. Show me other options.**

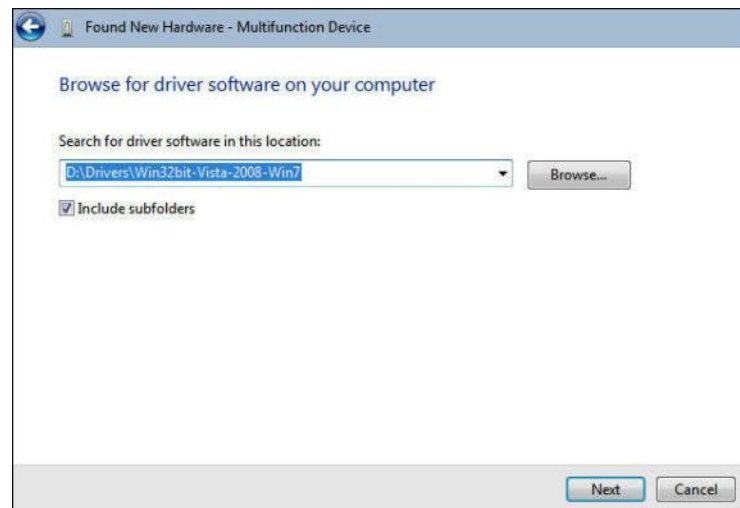
2. The **User Account Control – Windows needs your permission to continue** screen appears. Click **Continue**.
3. **Windows couldn't find driver software for your device** screen appears.



Choose **Browse my computer for driver software (advanced).**

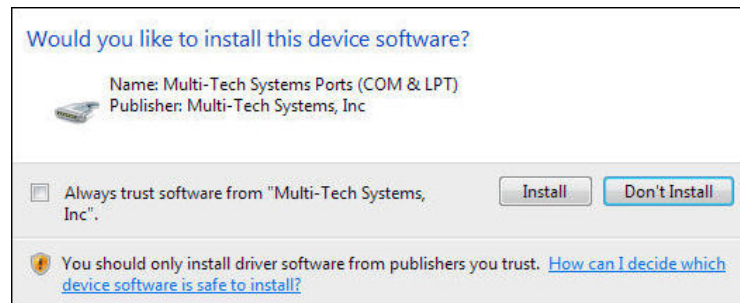


4. At the **Browse for driver software on your computer** screen.



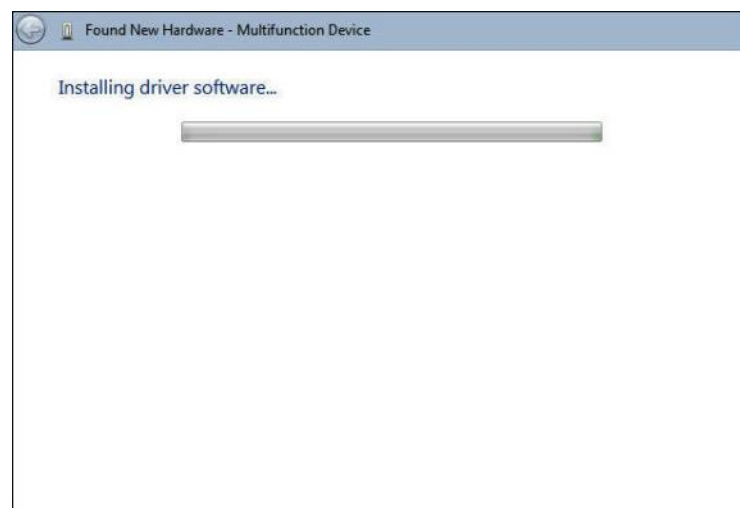
Click **Next**.

5. **Would you like to install this device software?** screen appears.

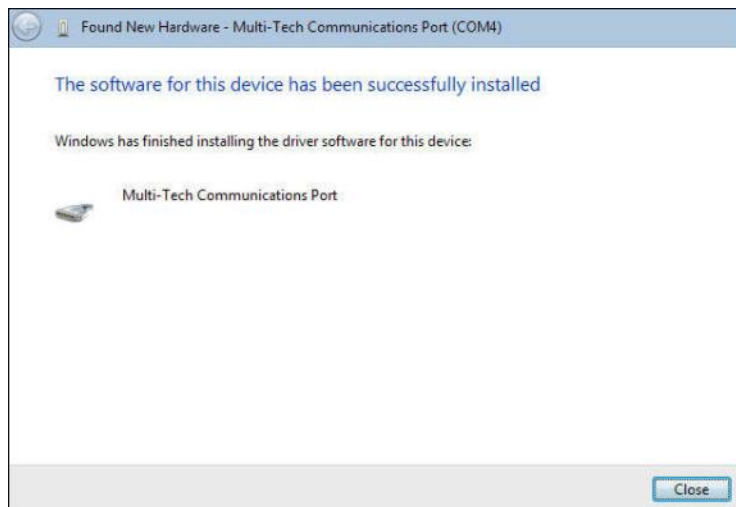


Click **Install**.

6. Installing driver software on **Multifunction Device** screen appears.



7. When the software for this device has been successfully installed screen appears with Windows has finished installing the driver software for this device: **Multi-Tech Communication Port (COM4)**.



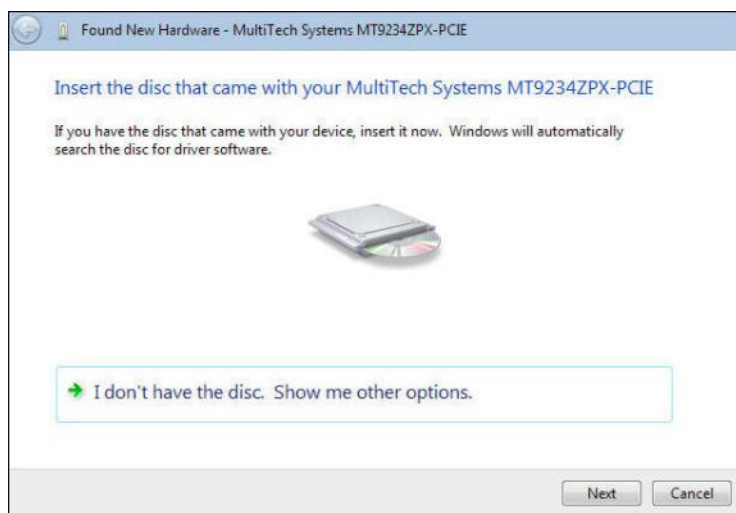
8. Click **Close**.

This completes the installation of the drivers for the Multifunction Device.

## Installation of the Modem

The third install wizard installs the modem drivers for the MT9234ZPX-PCIE.

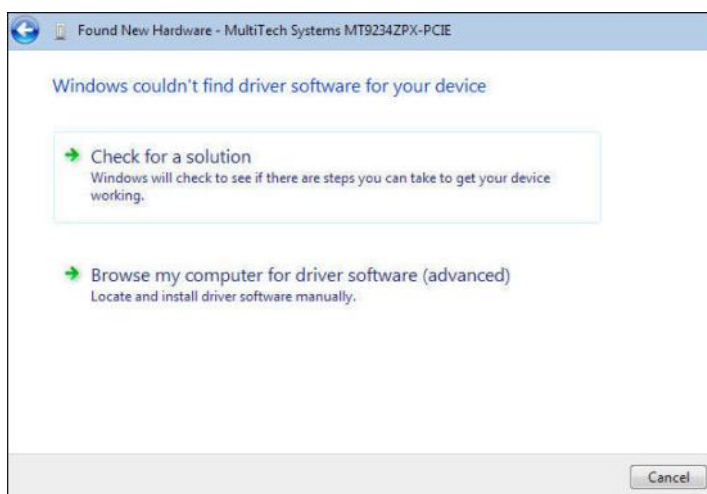
1. The **Found New Hardware – MultiTech Systems MT9234ZPX-PCIE** with Insert disc that came with your MultiTech Systems MT9234ZPX-PCIE screen appears.



Click on **I don't have the disc. Show me other options**.

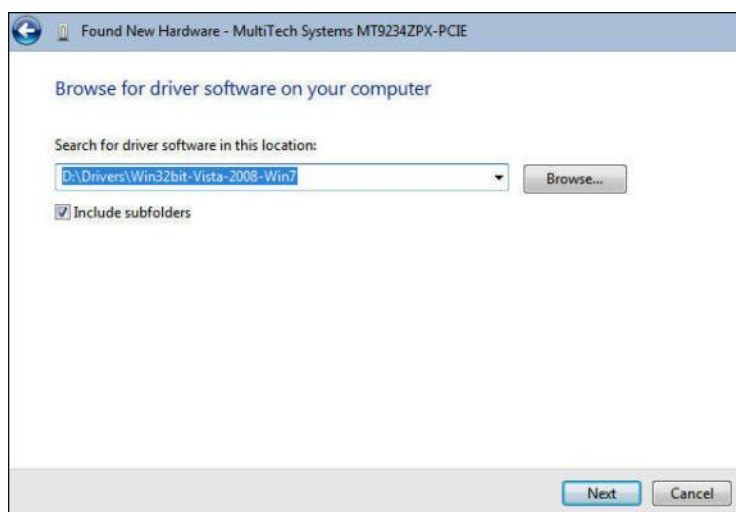
2. The **User Account Control – Windows needs your permission to continue** screen appears. Click **Continue**.

3. **Windows couldn't find driver software for your device** screen appears.



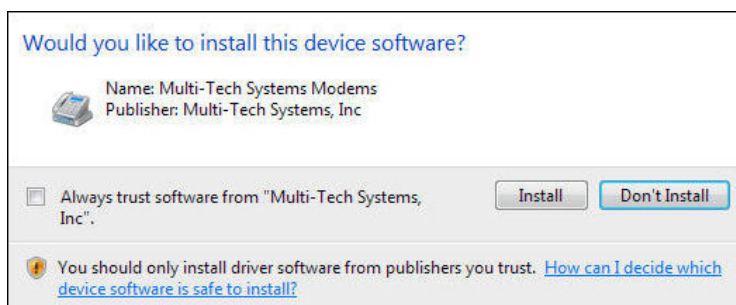
Choose **Browse my computer for driver software (advanced)**.

4. At the **Browse for driver software on your computer** screen.



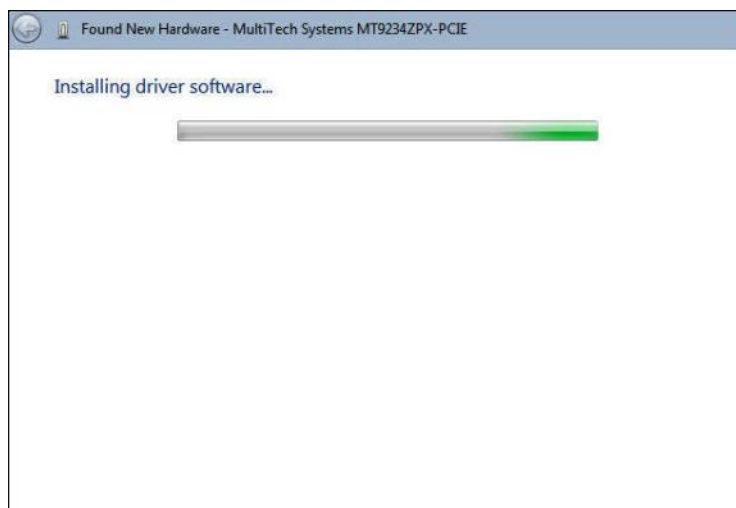
Click **Next**.

5. **Would you like to install this device software?** screen appears.

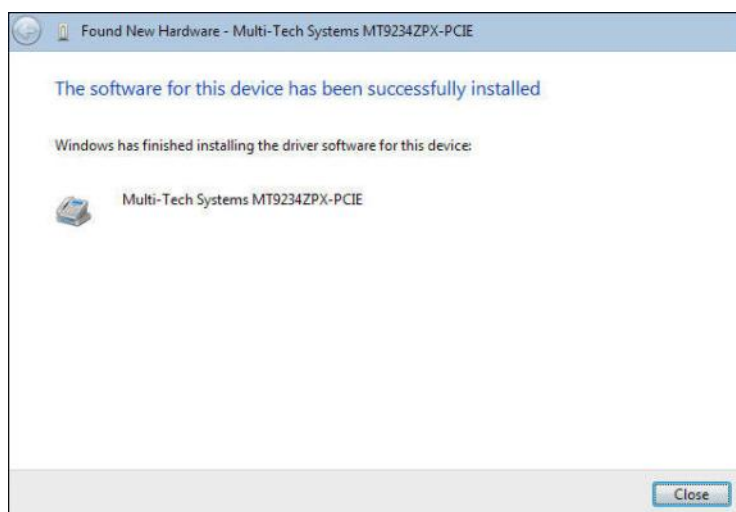


Click **Install**.

6. Installing driver software on **MultiTech Systems MT9234ZPX-PCIE** screen appears.



7. When the software for this device has been successfully installed screen appears with Windows has finished installing the driver software for this device: **Multi-Tech Systems MT9234ZPX-PCIE**.



8. Click **Close**.

The installation of drivers is now complete.

## Driver Installation for Windows XP and 2003 Operating Systems

*If you did not use the pre-installer for Windows, this is the process for installing your modem.*

The MT9234ZPX driver installation is done in three parts, each directed by an installation wizard. The three parts are installation of the: (1) PCI Serial Port, (2) Communications Port/Multifunction Device, and (3) modem.

### Preliminaries

1. Power up your computer.
2. Windows will detect that the new modem is present.

### Installation of the Serial Port

This wizard will install the files for the PCI Serial Port.

3. The **Welcome to the Found New Hardware Wizard** screen appears.



In response to the question, “Can Windows connect to Windows Update to search for software?” select “No, not this time” and click **Next**.

4. The next screen prompts you to insert the product CD into the computer. Insert the product CD, select “Install from a list or specific location (Advanced)”.



Click **Next**.

5. At the **Please Choose Your Search and Installation Options** screen.



Select **Include this location in the search:** and Click **Browse**. Browse to the Drivers folder on your MultiModem ZPX product CD, and then select the **Drivers** folder. Within the Drivers folder, select **Win32bit-XP-2003** folder.

If you are installing drivers on an XP 64-bit Operating System, you would browse to the **Win64bit-XP-2003** folder.



Click **Next**.

6. Please wait while the wizard searches for the **PCI Serial Port**.

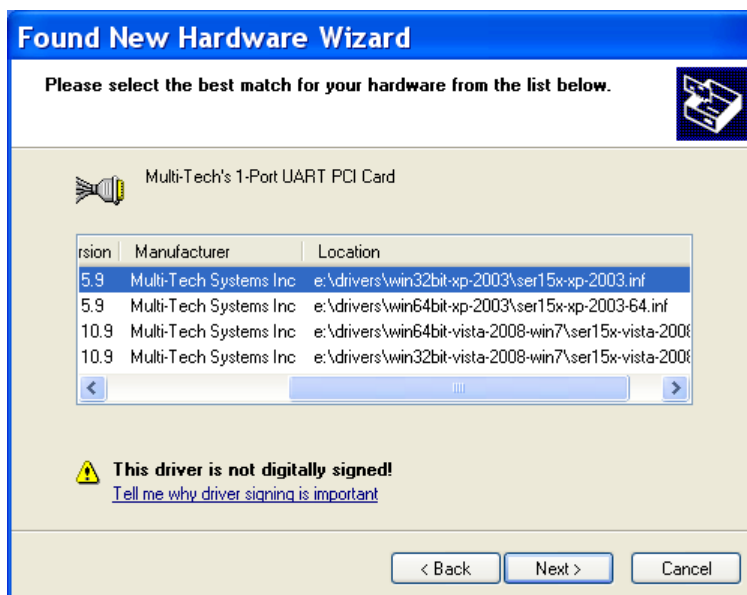


7. Then a **Hardware Installation** screen appears. The software you are installing for this hardware: **Multi-Tech's 1-Port UART PCI Card** has not passed Windows Logo testing to verify compatibility with Windows XP.



Click **Continue Anyway**.

8. Please select the best match for your hardware from the list below.



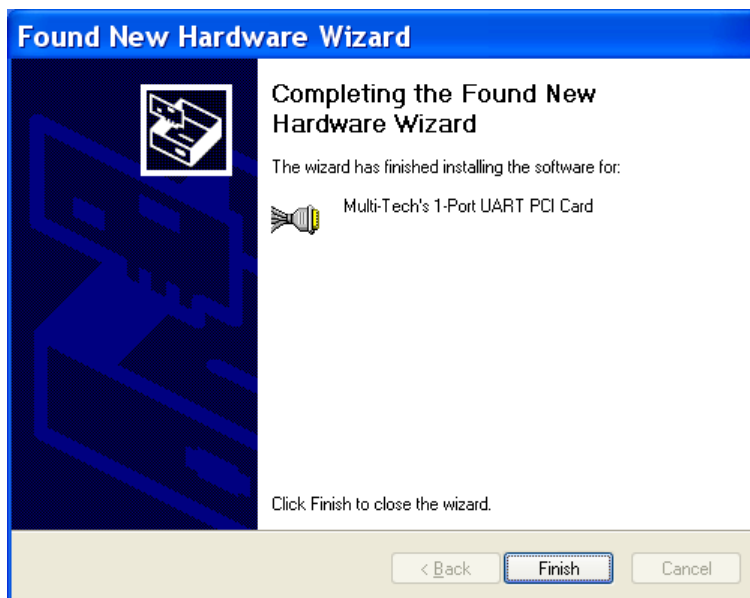
Select the top choice, **e:\drivers\win32bit-xp-2003\ser15x-xp-2003.inf** for Windows 32-bit Operating System; or select the second choice for Windows 64-bit Operating System **e:\drivers\win64bit-xp-2003\ser15x-xp-2003-64.inf**.

9. Please wait while the wizard installs the software.. MultiTech's 1-Port UART PCI Card screen appears.





10. A **completing the Found New Hardware Wizard** screen appears. This wizard installs the software for: **Multi-Tech's 1-port UART PCI Card**.



Click **Finish**.

## Installation of the Communications Port

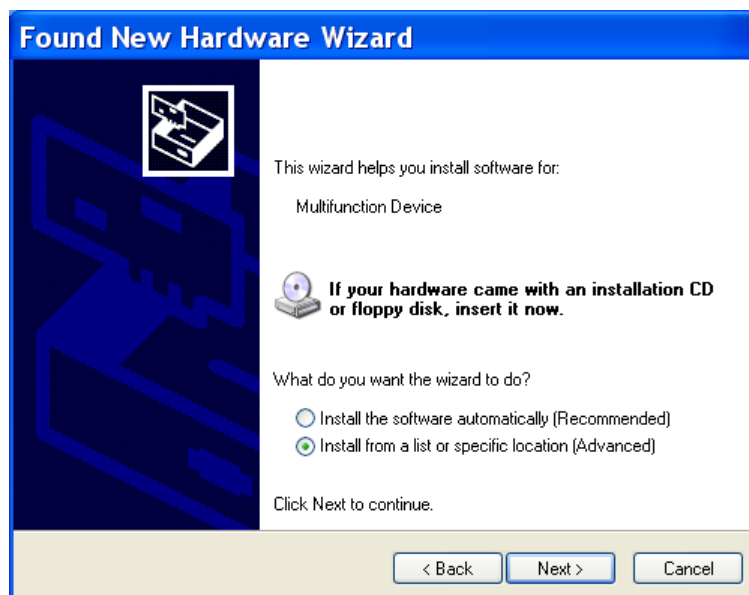
The wizard will install the files for the Multi-Tech Communications Port.

1. The **Welcome to the Found New Hardware Wizard** screen appears.



In response to the question, "Can Windows connect to Windows Update to search for software? Select **"No, not this time"** and click **Next**.

- This wizard helps you install software for: **Multifunction Device**.



Select **Install from a list or specific location (Advanced)**. Click **Next**.

- The **Please choose your search and installation options** screen appears.



Ensure that **Search for the best driver in these locations** is selected and that **Include this location in the search** is also selected. The Browse window shows the drive location, for example, **E:\Drivers\Win32bit-XP-2003**. Click **Next**.

4. Please wait while the wizard searches... **Multifunction Device**.

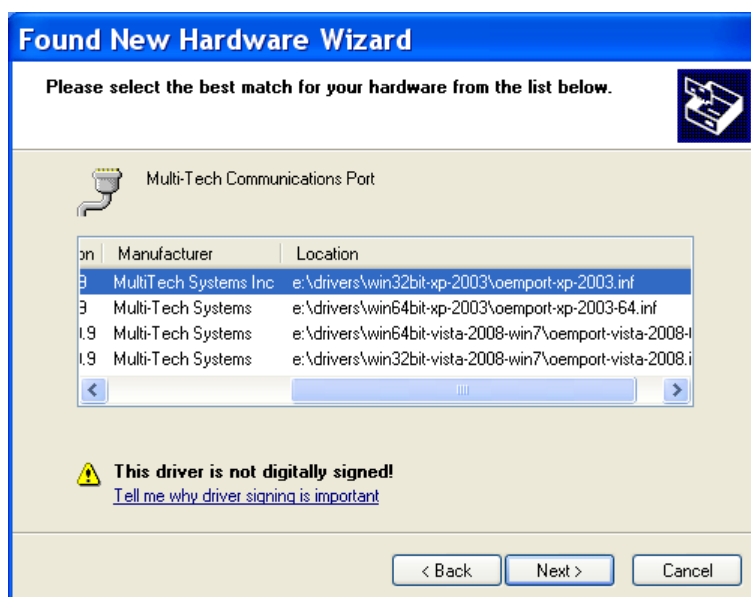


5. Then a **Hardware Installation** screen appears. The software you are installing for this hardware: Multi-Tech Communications Port has not passed Windows Logo testing to verify compatibility with Windows XP.



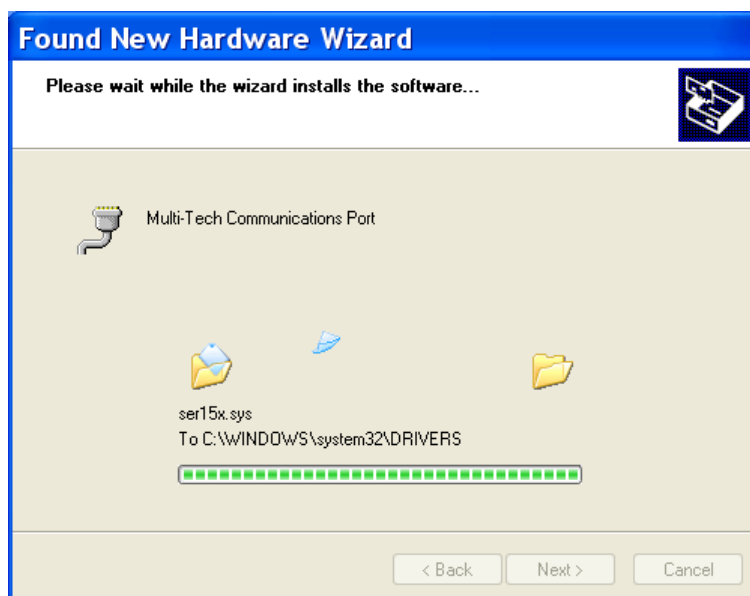
Click **Continue Anyway**.

6. Please select the best match for your hardware from the list below.



Select the top choice, **e:\drivers\win32bit-xp-2003\oemport-xp-2003.inf** for Windows 32-bit Operating System; or select the second choice for Windows 64-bit Operating System **e:\drivers\win64bit-xp-2003\oemport-xp-2003-64.inf**.

7. Please wait while the wizard installs the software... Multi-Tech Communications Port screen appears.



8. A **completing the Found New Hardware Wizard** screen appears. This wizard finished installing the software for: **Multi-Tech Communications Port**.



Click **Finish**.

## Installation of the Modem

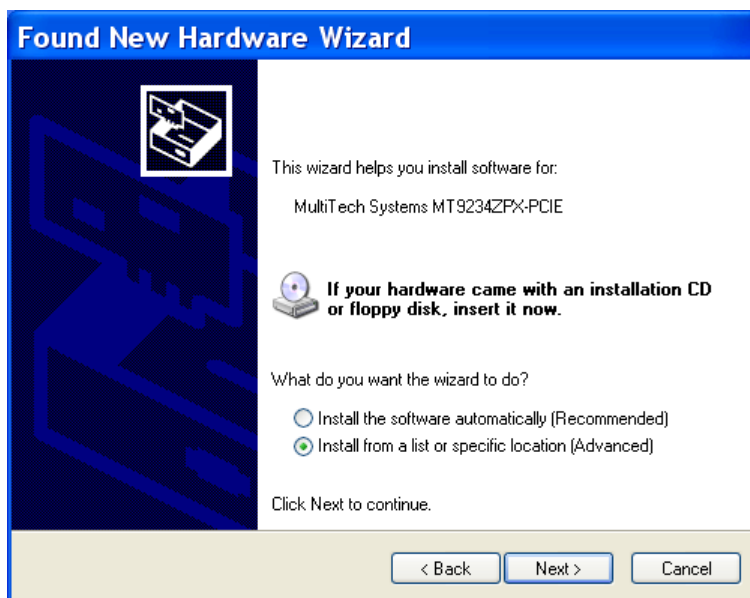
The wizard will install the file for Multi-Tech Systems MT9234ZPX-PCIE.

1. The Welcome to the Found New Hardware Wizard screen appears.



In response to the question, "Can Windows connect to Windows Update to search for software? Select **No, not this time**" and click **Next**.

- This wizard helps you install software for: **MultiTech Systems MT9234ZPX-PCIE**.



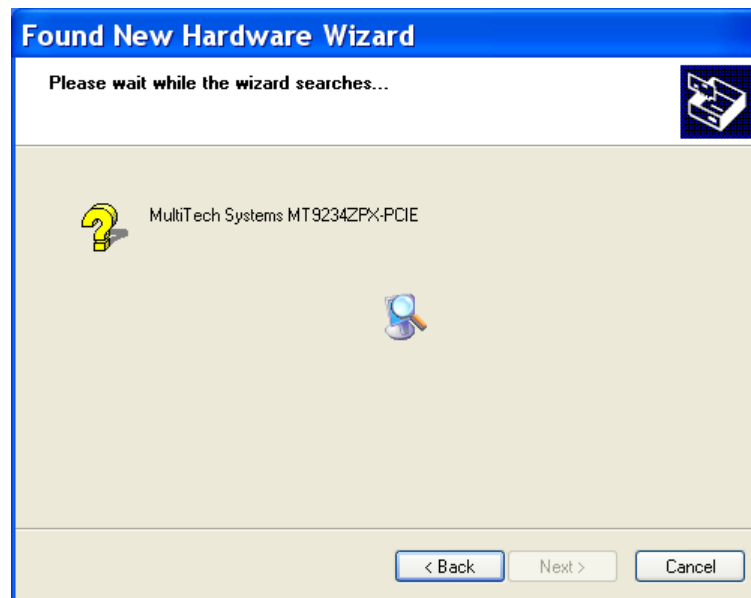
Select **Install from a list or specific location (Advanced)**. Click **Next**.

- The **Please choose your search and installation options** screen appears.



Ensure that **Search for the best driver in these locations** is selected and that **Include this location in the search** is also selected. The Browse window shows the drive location, for example, **E:\Drivers\Win32bit-XP-2003**. Click **Next**.

4. Please wait while the wizard searches... **MultiTech Systems MT9234ZPX-PCIE.**

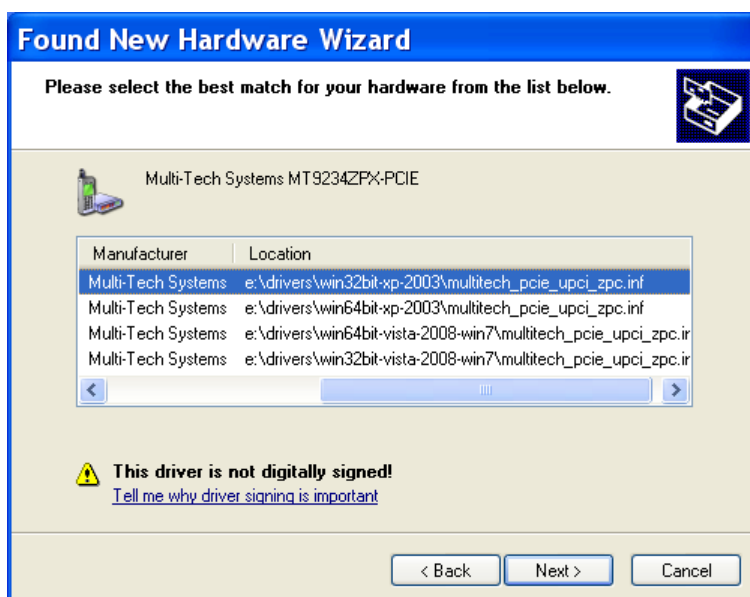


5. Then a **Hardware Installation** screen appears. The software you are installing for this hardware: Multi-Tech Communications Port has not passed Windows Logo testing to verify compatibility with Windows XP.



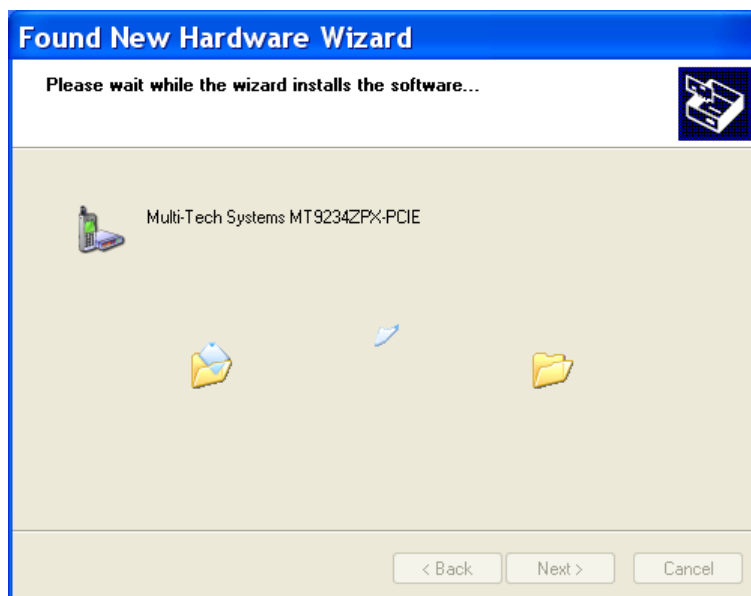
Click **Continue Anyway**.

6. Please select the best match for your hardware from the list below.



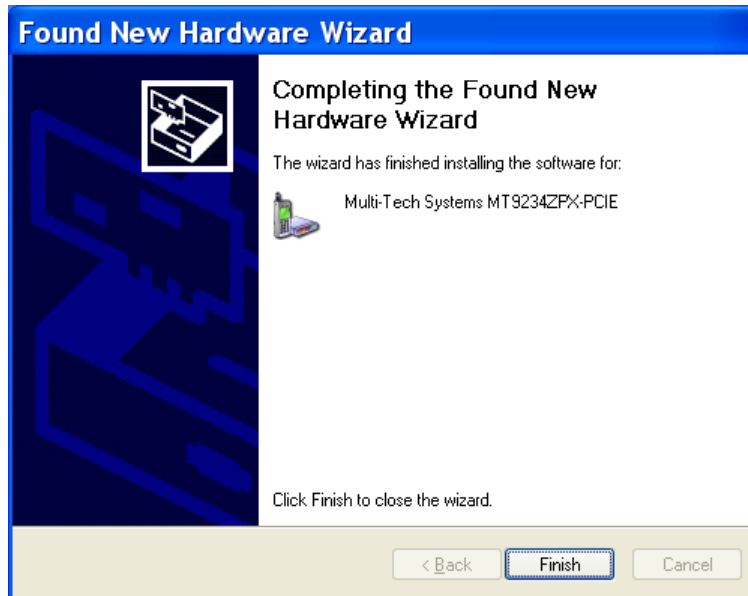
Select the top choice, **e:\drivers\win32bit-xp-2003\multitech\_pcie\_upci\_zpc.inf** for Windows 32-bit Operating System; or select the second choice for Windows 64-bit Operating System **e:\drivers\win64bit-xp-2003\multitech\_pcie\_upci\_zpc.inf**.

7. Please wait while the wizard installs the software.. Multi-Tech Systems MT9234ZPX-PCIE screen appears.





8. A **completing the Found New Hardware Wizard** screen appears. The wizard has finished installing the software for: **Multi-Tech Systems MT9234ZPX-PCIE**.



Click **Finish**.

The installation of drivers is now complete.

## Configure the Modem for Your Country

Different countries have different requirements for how modems must function. Therefore, before you use your modem, you must configure it to match the defaults of the country/region in which you are using it. You must also do this if you move the modem to another country/region after it has been configured for the first country/region. The modem is set to country, Euro/NAM, with a country code of 52 decimal by default. You can use one of two configuration methods:

- Use the Global Wizard to Configure Your Modem
- Use AT Commands to Configure Your Modem

### Using the Global Wizard to Configure Your Modem

The Global Wizard configuration utility is recommended for computers running Windows 2000 or newer.

1. Insert the MultiModem product CD into the CD-ROM drive.
2. When the splash screen appears, click on **Initial Setup & Country Sel** button.
3. The Global Wizard page appears, choose either:
  - **Run Global Wizard from CD**. This will not load the program onto your hard drive.  
or
  - **Install Global Wizard on the HD**. This will install the program onto your hard drive for future use.
4. The **Global Wizard** dialog box appeared. Click **Next**.
5. The Global Wizard searches for your modem and identifies it. Click **Next**.
6. Select the country/region in which the modem will be used. Click **Next**.
7. Review your country/region choice. If it is correct, click Next to configure the modem.
8. When Global Wizard announces that the parameters have been set, click **Finish** to exit.

### Using AT Commands to Configure Your Modem

Non-Windows users can configure the modem using AT commands. You must enter these commands in your communication program terminal window.

1. Run your favorite communication program and open the windows terminal window.
2. To configure the modem for a specific country/region, type **AT%T19,0,nn**, where **nn** is the country/region code in hexadecimal format, click **ENTER**. The message **OK** displays.
3. To verify the change, type **ATI9** and click **ENTER**.

The country code is displayed in decimal format, as in this example:

Country/Region	AT Command (decimal)	Country code (hexadecimal)
Euro/NAM	AT%T19,0,34 (default)	52

A complete list of country/region codes can be found on the Multi-Tech Web site at:

[http://www.multitech.com/en\\_US/PRODUCTS/Categories/Device\\_Networking/global\\_modems/configuration.asp](http://www.multitech.com/en_US/PRODUCTS/Categories/Device_Networking/global_modems/configuration.asp)

The Global Modem Country Approvals page displays. On this page you can view approvals, configuration strings and responses by country and product.

## Chapter 3 – Remote Configuration

Remote configuration is a network management tool that allows you to configure the MultiModem anywhere in your network from one location. With password-protected remote configuration, you can issue **AT** commands to a remote modem for maintenance or troubleshooting as if you were on site.

### Basic Procedure

The following steps are valid regardless of whether the connection is established by the local or the remote Multi-Tech modem.

**Note:** For this procedure, the remote computer must be running, and a communication program must be ready for a data connection.

1. Establish a data connection with a remote MultiModem.
2. Send three remote configuration escape characters followed by **AT** and the setup password, and press ENTER. Example: **%%%ATMTSMODEM** (all capital letters). You have four tries to enter the correct password before being disconnected. If the password is correct, the remote modem responds with **OK**.
3. Type **AT** commands to configure the remote modem.
4. When you have finished configuring the remote modem, save the new configuration by typing **AT&W0** and pressing ENTER.
5. Type **ATO** and press ENTER to exit remote configuration. You can now break the connection in the normal way.

### Setup

Multi-Tech modems are shipped with a default setup password (MTSMODEM). Because anyone who has the *User Guide* knows the default setup password, you should change the password and possibly also the remote configuration escape character. Record your changes for future use.

### To Change the Setup Password

1. Open a data communications program such as HyperTerminal.
2. To change the password, type **AT#S=xxxxxxx**, where **xxxxxxx** stands for the password, and then press ENTER. The password can include any keyboard character, and can be up to eight characters long. The modem responds with **OK**.

**CAUTION:** Passwords are case-sensitive. The next time you enter the password, it must be in the same case as you set it up.

3. The new password is saved automatically. You can now either enter more AT commands or exit the data communications program. The next time you wish to set up the modem, you must use the new password.

### To Change the Remote Escape Character

To further improve security, you can change a remote modem's remote configuration escape character either locally or remotely. The remote configuration escape character is stored in register **S9**. The factory default is 37, which is the ASCII code for the percent character (%). Setting **S9** to 0 (zero) disables remote configuration entirely.

**CAUTION:** If you set S9 to 0 (zero) remotely, you won't be able to change it back remotely.

1. Establish a remote configuration link with the remote modem as described in "Basic Procedure."
2. Type **ATS9=n**, where **n** is the ASCII code for the new remote configuration escape character, and then press ENTER.
3. Save the new value by typing **AT&W** and pressing ENTER. Record for future use.
4. Type **ATO** and press ENTER to exit remote configuration.

## Chapter 4 – Troubleshooting

Your modem was thoroughly tested at the factory before it was shipped. If you are unable to make a successful connection, or if you experience data loss or garbled characters during your connection, it is possible that the modem is defective. However, it is more likely that the source of your problem lies elsewhere. The following symptoms are typical of problems you might encounter:

- The modem does not respond to commands.
- The modem cannot connect when dialing.
- The modem disconnects while online.
- The modem cannot connect when answering.
- File transfer is slower than it should be.
- Data is being lost.
- There are garbage characters on the monitor.
- The modem doesn't work with Caller ID.
- Fax and data software can't run at the same time.
- The voice functions don't work.

### The Modem Does Not Respond to Commands

- Make sure you are issuing the modem commands from data communications software, either manually in terminal mode or automatically by configuring the software. (You cannot send commands to the modem from the DOS prompt.)
- Make sure you are in terminal mode in your data communications program, then type **E1** and press ENTER. If you get an *OK* response from your modem, your connections are good and the problem likely is in the connection setup in your communications software.
- If you don't get an *OK*, make sure you have properly configured the port in your communications program. Most legacy (prior to Windows 95) communications programs connect to the COM port when the software loads and remain connected until the program terminates. Some programs can disconnect without exiting the program. If this is the case, try issuing the software's connection command. If more than one communications program is open, they may conflict with each other. Make sure all other communications programs are closed, and then try to make the connection again.
- Your communication software settings might not match the port the modem is connected to. Make sure the COM port you chose during setup matches the COM port set in your communications software. See Chapter 2 for more information.

Another expansion card, such as a sound or game card, might be using the same COM port, memory address, or interrupt request (IRQ) as your modem. See Chapter 2 for information on verifying the configuration for your operating system. Look for conflicts with other devices installed on your computer. Resources are assigned at power-up by the computer's BIOS. If the resources assigned to the MultiModem conflict with the resources of another device, the resources of the second device have to be changed. Select the port the conflicting device is on and change it to resolve the conflict. If you need to change switches or jumpers on the conflicting device, refer to the device's documentation.

- If you have another MultiModem, install it and try to make a connection.
- The modem might have a problem beyond the scope of this user guide. If you have another Multi-Tech modem, try swapping modems. If the problem goes away, contact support at <https://support.multitech.com> for assistance.

## The Modem Cannot Connect When Dialing

Reasons why the MultiModem may fail to connect include:

- lack of a physical connection to the telephone line.
- a wrong dial tone.
- a busy signal.
- a wrong number.
- no modem at the other end.
- a faulty modem, computer, or software at the other end.
- incompatibility between modems
- poor line conditions.

You can narrow the list of possibilities by using extended result codes. Extended result codes are enabled by default. If they have been disabled, include **V1X4** in the modem's initialization string, or in terminal mode enter **ATV1X4** and press ENTER. When you dial again, the modem reports the call's progress.

- If the modem reports *NO DIALTONE*, check that the modem's telephone line cable is connected to both the modem's LINE jack (not the PHONE jack) and the telephone wall jack. If the cable looks secure, try replacing it.

If that doesn't work, the problem might be in your building's telephone installation. To test the building installation, check for a dial tone by connecting a standard telephone set to the line in place of the modem. If you hear a dial tone, your modem might be installed behind a corporate phone system (PBX) with an internal dial tone that sounds different from the normal dial tone. In that case, the modem might not recognize the dial tone and might treat it as an error. Check with your PBX personnel or the PBX system manual to see if you can change the internal dial tone. If you can't, change your modem's initialization string to replace **X4** with **X3**, which will cause the modem to ignore dial tones (note, however, that **X3** is not allowed in some countries, such as France and Spain).

- If the modem reports *BUSY*, the other number might be busy. Try again later. *BUSY* can also indicate that you failed to add a **9**, prefix to the phone number if you must dial 9 for an outside line.

If you must dial 9 to get an outside line, the easiest way to dial it automatically using legacy software is to include it in the modem's dial prefix, e.g., **ATDT9,**. Note the comma, which inserts a pause before the number is dialed. By inserting **9**, into the dial prefix, you do not have to include it in each directory entry.

To change the dial prefix in Windows HyperTerminal, select **Connect** from the **Call** menu, click **Dialing Properties**, and type **9** in the local and long distance boxes.

- If the modem reports *NO ANSWER*, the other system has failed to go off-hook, or you might have dialed a wrong number. Check the number.
- If the modem reports *NO CARRIER*, the phone was answered at the other end, but no connection was made. You might have dialed a wrong number, and a person answered instead of a computer, or you might have dialed the correct number but the other computer or software was turned off or faulty. Check the number and try again, or try calling another system to make sure your modem is working. Also, try calling the number on your telephone. If you hear harsh sounds, then there is a modem at the other end. In that case, the modems might be having problems negotiating because of incompatibilities or line noise. Try the call again, connecting at a lower speed by setting register S37 to a lower rate (for example, by typing **ATS37=11** in the terminal window and pressing ENTER).
- Poor line conditions can also affect the connection. When using V.34 or V.32 client-to-client connections in poor conditions, setting **S38=0** may result in better performance.

## The Modem Disconnects While Online

- If you have Call Waiting on the same phone line as your modem, it can interrupt your connection when someone tries to call you. If you have Call Waiting, disable it before each call. In most telephone areas in North America, you can disable Call Waiting by preceding the telephone number with **\*70** (but first check with your local telephone company).

You can automatically disable Call Waiting by including the disabling code in the modem's dial prefix (e.g., **ATDT\*70**,—note the comma, which inserts a pause before the number is dialed). For example, in Windows select **Start | Settings | Control Panel**, and then **Modems**. In the **Modems Properties** dialog box, select **Multi-Tech MT9234ZPX-UPCI**, and then click **Dialing Properties**. Check **This location has call waiting**, and then select the correct code for your phone service.

- If you have extension phones on the same line as your modem, you or someone else can interrupt the connection by picking up another phone. If this is a frequent problem, disconnect the extension phones before using the modem, or install another phone line especially for the modem.
- Check that the phone cord between the modem's LINE jack and the wall jack is undamaged and firmly connected to both.
- You might have had a poor connection because of line conditions or the problem might have originated on the other end of the line. Try again.
- Your ISP might have hung up on you because of lack of activity on your part or because you exceeded your time limit for the day. Try again.

## The Modem Cannot Connect When Answering

- Autoanswer might be disabled. Turn on autoanswer in your communications program or send the command **ATS0=1** (**ATS0=2** if you have Caller ID service) to your modem in terminal mode.
- The application should supply DTR. The default DTR Control command (**&D2**) inhibits autoanswer. To enable autoanswer, change DTR Control to **&D0**, and make sure **&Q0**, **&Q5**, or **&Q6** is also set. For more information, see the **&D** command in the AT Commands Reference Guide.

## File Transfer Is Slower Than It Should Be

- If you are using a slow transfer protocol, such as Xmodem, try Zmodem or Ymodem/G instead.
- Is your line noisy? If there is static on your line, the modem has to resend many blocks of data to ensure accuracy. You must have a clean line for maximum speed.
- If you are downloading a compressed file with MNP 5 hardware compression enabled, try disabling data compression. The transfer may be marginally slower with data compression enabled, because hardware data compression cannot compress a file already compressed by an archiving program.
- Does your Internet service provider (ISP) use the same 56K protocol as your modem? The default setting of your modem is to connect using either the V.92 or the V.90 protocol, depending on which one the ISP's modem is using. If your ISP uses the V.90 protocol, the maximum speed you will be able to upload at is 33,600 bps. Check with your ISP to see which protocols it supports.
- Are you trying to send a file to another client modem? If so, then your maximum possible connect speed is 33,600. You can upload at speeds greater than 33,600 bps only when connected to an ISP that supports the V.92 protocol.
- Try entering the **I11** command in command mode after disconnecting and before a reset to display information about the last connection, making a screen print of the connection statistics, and checking for parameters that might be unacceptable.

### Data Is Being Lost

- If you are using data compression, set the serial port baud rate to two to six times faster than the data rate.
- Make sure the flow control method you selected in your software matches the method selected in the modem (see AT commands **&K** and **\Q**.)
- Enter the **I11** command in command mode and before the modem is reset to display information about the last connection. Then make a screen print of the connection statistics, and look for unacceptable parameters. To display information about the present configuration, you must use the escape sequence, **+++**, to ensure command mode while still on line. To return to on line mode, set **ATO**.

### There Are Garbage Characters on the Monitor

- Your computer and the remote computer might be set to different word lengths, stop bits, or parities. If you have connected at 8-N-1, try changing to 7-E-1, or vice-versa, using your communication software.
- You might be experiencing line noise. Enable error correction, if it is disabled, or hang up and call again; you might get a better connection the second time.
- At speeds above 2400 bps, the remote modem might not use the same transmission or error correction standards as your modem. Try connecting at a slower speed or disabling error correction. (With no error correction, however, line noise can cause garbage characters.)
- Enter the **I11** command in command mode and before the modem is reset to display information about the last connection. Then make a screen print of the connection statistics, and look for unacceptable parameters. To display information about the present configuration, you must use the escape sequence, **+++**, to ensure command mode while still on line. To return to on line mode, set **ATO**.

### The Modem Doesn't Work with Caller ID

- Caller ID information is transmitted between the first and second rings, so if autoanswer is turned off (**S0=0**) or if the modem is set to answer after only one ring (**S0=1**), the modem will not receive Caller ID information. Check your initialization string, and if necessary change it to set the modem to answer after the second ring (**S0=2**).
- Make sure that you have Caller ID service from your telephone company.

### Fax and Data Software Can't Run at the Same Time

- Communication devices can be accessed by only one application at a time. In Windows 2000 and higher, you can have data and fax communication applications open at the same time, but they cannot use the same modem at the same time.

### The Voice Functions Don't Work

- There are several tests that you can perform to verify the voice circuits of the MultiModem. First, make sure all connecting cables—telephone, microphone, and speaker—are undamaged and firmly connected to the correct jacks. Then retry whatever action was not working. If the problem persists, try the voice mail test; if that doesn't work, and if you have a microphone and speaker connected to the MultiModem, try the loopback and speakerphone tests, which do not require special software.

### Voice Mail Test

- Test the MultiModem's voice function set up the MultiModem for voice mail. Have an acquaintance call and leave a message, and then play it back.

If your modem does not play sound files in voice mode, go to Windows Control Panel and double-click the Multimodem icon. Under the **Audio** tab, select **Modem Wave Driver** as your preferred device for both playback and recording, then try again.

### Loopback Test

1. Connect a microphone and speaker to the MultiModem. To avoid feedback, make sure the microphone and speaker are well separated; better yet, use a headphone instead of a speaker.
2. Select **Start**, point to **Programs**, point to **Accessories**, and click **HyperTerminal**.
3. Click **Cancel** in the **Connection Description** dialog box.
4. In the HyperTerminal terminal window, type **AT&&S** and press ENTER. This command causes input from the microphone to be looped back to the speaker.
5. Speak into the microphone; you should hear your voice on the speaker or headphone.
6. Type **ATZ** and press ENTER to reset the modem.

### Speakerphone Test (with voice option)

1. Connect a microphone and speaker to the MultiModem.
2. Select **Start**, point to **Programs**, point to **Accessories**, and click **HyperTerminal**.
3. Click **Cancel** in the **Connection Description** dialog box.
4. In the HyperTerminal terminal window, type  
**AT+FCLASS=8**  
**AT+VLS=7**  
**ATDTxxxxxxx** (for xxxxxxxx substitute a telephone number)
5. Speak into the microphone to talk to the person on the other end of the line, and listen over the speaker.
6. Type **+++ATH** and press ENTER to hang up.
7. Type **ATZ** and press ENTER to reset the modem.



## Appendix A – Environmental Information

### Waste Electrical and Electronic Equipment (WEEE) Statement

July, 2005

The WEEE directive places an obligation on EU-based manufacturers, distributors, retailers and importers to take-back electronics products at the end of their useful life. A sister Directive, ROHS (Restriction of Hazardous Substances) complements the WEEE Directive by banning the presence of specific hazardous substances in the products at the design phase. The WEEE Directive covers all Multi-Tech products imported into the EU as of August 13, 2005. EU-based manufacturers, distributors, retailers and importers are obliged to finance the costs of recovery from municipal collection points, reuse, and recycling of specified percentages per the WEEE requirements.

#### Instructions for Disposal of WEEE by Users in the European Union

The symbol shown below is on the product or on its packaging, which indicates that this product must not be disposed of with other waste. Instead, it is the user's responsibility to dispose of their waste equipment by handing it over to a designated collection point for the recycling of waste electrical and electronic equipment. The separate collection and recycling of your waste equipment at the time of disposal will help to conserve natural resources and ensure that it is recycled in a manner that protects human health and the environment. For more information about where you can drop off your waste equipment for recycling, please contact your local city office, your household waste disposal service or where you purchased the product.



### REACH Statement

#### Registration of Substances:

After careful review of the legislation and specifically the definition of an “article” as defined in EC Regulation 1907/2006, Title II, Chapter 1, Article 7.1(a)(b), it is our current view Multi-Tech Systems, Inc. products would be considered as “articles”. In light of the definition in § 7.1(b) which requires registration of an article only if it contains a regulated substance that “is intended to be released under normal or reasonable foreseeable conditions of use,” our analysis is that Multi-Tech Systems, Inc. products constitute nonregisterable articles for their intended and anticipated use.

#### Substances of Very High Concern (SVHC)

Per the candidate list of Substances of Very high Concern (SVHC) published October 28, 2008 we have reviewed these substances and certify the Multi-Tech Systems, Inc. products are compliant per the EU “REACH” requirements of less than 0.1% (w/w) for each substance. If new SVHC candidates are published by the European Chemicals Agency, and relevant substances have been confirmed, that exceeds greater than 0.1% (w/w), Multi-Tech Systems, Inc. will provide updated compliance status.

Multi-Tech Systems, Inc. also declares it has been duly diligent in ensuring that the products supplied are compliant through a formalized process which includes collection and validation of materials declarations and selective materials analysis where appropriate. This data is controlled as a part of a formal quality system and will be made available upon request.

## Restriction of the Use of Hazardous Substances (RoHS)



**Multi-Tech Systems, Inc.**

### **Certificate of Compliance**

#### **2002/95/EC**

Multi-Tech Systems, Inc. confirms that this product now complies with the chemical concentration limitations set forth in the directive **2002/95/EC** of the European Parliament (Restriction Of the use of certain Hazardous Substances in electrical and electronic equipment - **RoHS**)

These Multi-Tech Systems, Inc. products do not contain the following banned chemicals:

Lead, [Pb] < 1000 PPM

Mercury, [Hg] < 1000 PPM

Hexavalent Chromium, [Cr+6] < 1000 PPM

Cadmium, [Cd] < 100 PPM

Polybrominated Biphenyl, [PBB] < 1000 PPM

Polybrominated Diphenyl Ether, [PBDE] < 1000 PPM

Moisture Sensitivity Level (MSL) =1

Maximum Soldering temperature = 260C (wave only)

#### **Notes:**

1. Lead usage in some components is exempted by the following RoHS annex; therefore, higher lead concentration could be found.
  - a. Lead in high melting temperature type solders (i.e., tin-lead solder alloys containing more than 85% lead).
  - b. Lead in electronic ceramic parts (e.g., piezoelectronic devices).
2. Moisture Sensitivity Level (MSL) – Analysis is based on the components/material used on the board.

## C-RoHS HT/TS Substance Concentration

### 依照中国标准的有毒有害物质信息

根据中华人民共和国信息产业部 (MII) 制定的电子信息产品 (EIP)

标准 - 中华人民共和国《电子信息产品污染控制管理办法》(第 39 号), 也称作中国

RoHS, 下表列出了 Multi-Tech Systems Inc. 产品中可能含有的有毒物质 (TS) 或有害物质 (HS) 的名称及含量水平方面的信息。

成分名称	有害/有毒物质/元素					
	铅 (PB)	汞 (Hg)	镉 (CD)	六价铬 (CR6+)	多溴联苯 (PBB)	多溴二苯醚 (PBDE)
印刷电路板	O	O	O	O	O	O
电阻器	X	O	O	O	O	O
电容器	X	O	O	O	O	O
铁氧体磁环	O	O	O	O	O	O
继电器/光学部件	O	O	O	O	O	O
IC	O	O	O	O	O	O
二极管/晶体管	O	O	O	O	O	O
振荡器和晶振	X	O	O	O	O	O
调节器	O	O	O	O	O	O
电压传感器	O	O	O	O	O	O
变压器	O	O	O	O	O	O
扬声器	O	O	O	O	O	O
连接器	O	O	O	O	O	O
LED	O	O	O	O	O	O
螺丝、螺母以及其它五金件	X	O	O	O	O	O
交流-直流电源	O	O	O	O	O	O
软件/文档 CD	O	O	O	O	O	O
手册和纸页	O	O	O	O	O	O
底盘	O	O	O	O	O	O

**X** 表示所有使用类似材料的设备中有害/有毒物质的含量水平高于 SJ/Txxx-2006 限量要求。

**O** 表示不含该物质或者该物质的含量水平在上述限量要求之内。

•

## Appendix B – Regulatory Compliance

### FCC Part 68 Telecom

1. This equipment complies with part 68 of the Federal Communications Commission Rules. On the outside surface of this equipment is a label that contains, among other information, the FCC registration number. This information must be provided to the telephone company.
2. The suitable USOC jack (Universal Service Order Code connecting arrangement) for this equipment is shown below. If applicable, the facility interface codes (FIC) and service order codes (SOC) are shown.
3. An FCC-compliant telephone cord and modular plug is provided with this equipment. This equipment is designed to be connected to the telephone network or premises wiring using a compatible modular jack that is Part 68 compliant. See installation instructions for details.
4. The ringer equivalence number (REN) is used to determine the number of devices that may be connected to the telephone line. Excessive RENs on the telephone line may result in the device not ringing in response to an incoming call. In most, but not all, areas the sum of the RENs should not exceed 5.0. To be certain of the number of devices that may be connected to the line, as determined by the total RENs, contact the local telephone company.
5. If this equipment causes harm to the telephone network, the telephone company will notify you in advance that temporary discontinuance of service may be required. But if advance notice is not practical, the telephone company will notify you as soon as possible. Also, you will be advised of your right to file a complaint with the FCC if you believe it is necessary.
6. The telephone company may make changes in its facilities, equipment, operations, or procedures that could affect the operation of the equipment. If this happens, the telephone company will provide advance notice in order for you to make necessary modifications in order to maintain uninterrupted service.
7. If trouble is experienced with this equipment (the model of which is indicated below) please contact Multi-Tech Systems, Inc. at the address shown below for details of how to have repairs made. If the trouble is causing harm to the telephone network, the telephone company may request you remove the equipment from the network until the problem is resolved.
8. No repairs are to be made by you. Repairs are to be made only by Multi-Tech Systems or its licensees. Unauthorized repairs void registration and warranty.
9. This equipment should not be used on party lines or coin lines.
10. If so required, this equipment is hearing-aid compatible.
11. Manufacturing information:

Manufacturer:	Multi-Tech Systems, Inc.
Trade Name:	MultiModem <sup>®</sup> ZPX
Model Number:	MT9234ZPX
FCC Registration No:	AU7MM01BMT9234SMI
Ringer Equivalence No:	0.1B
Modular Jack (USOC):	RJ11C
Service Center in USA:	Multi-Tech Systems, Inc. 2205 Woodale Drive Mounds View, MN 55112 U.S.A. (763) 785-3500 (763) 785-9874 Fax

### FCC Part 15 Class B Statement

This equipment has been tested and found to comply with the limits for a **Class B** digital device, pursuant to 47 CFR – FCC Part 15 regulations. The stated limits in this regulation are designed to provide reasonable protection against harmful interference in a residential environment. This equipment generates, uses, and can radiate radio frequency energy, and if not installed and used in accordance with the instructions, may cause harmful interference to radio communications. However, there is no guarantee that interference will not occur in a particular installation. If this equipment does cause harmful interference to radio or television reception, which can be determined by turning the equipment off and on, the user is encouraged to try to correct the interference by one or more of the following measures:

- Reorient or relocate the receiving antenna.
- Increase the separation between the equipment and receiver.
- Plug the equipment into an outlet on a circuit different from that to which the receiver is connected.
- Consult the dealer or an experienced radio/TV technician for help.

This device complies with 47 CFR – FCC Part 15 rules. Operation of this device is subject to the following conditions:

1. This device may not cause harmful interference, and
2. This device must accept any interference that may cause undesired operation.

**Warning:** Changes or modifications to this unit not expressly approved by the party responsible for compliance could void the user's authority to operate the equipment.

### Canadian Limitations Notice

**Notice:** The ringer equivalence number (REN) assigned to each terminal device provides an indication of the maximum number of terminals allowed to be connected to a telephone interface. The termination on an interface may consist of any combination of devices subject only to the requirement that the sum of the ringer equivalence numbers of all the devices does not exceed 5.

**Notice:** The Industry Canada label identifies certificated equipment. This certification means that the equipment meets certain telecommunications network protective, operational and safety requirements. The Industry Canada label does not guarantee the equipment will operate to the user's satisfaction.

Before installing this equipment, users should ensure that it is permissible to be connected to the facilities of the local telecommunications company. The equipment must also be installed using an acceptable method of connection. The customer should be aware that compliance with the above conditions may not prevent degradation of service in some situations. Repairs to certified equipment should be made by an authorized Canadian maintenance facility designated by the supplier. Any repairs or alterations made by the user to this equipment or equipment malfunctions may give the telecommunications company cause to request the user to disconnect the equipment.

Users should ensure for their own protection that the electrical ground connections of the power utility, telephone lines and internal metallic water pipe system, if present, are connected together. This precaution may be particularly important in rural areas.

**Caution:** Users should not attempt to make such connections themselves, but should contact the appropriate electric inspection authority, or electrician, as appropriate.

### Industry Canada

This Class B digital apparatus meets all requirements of the Canadian Interference-Causing Equipment Regulations.

Cet appareil numérique de la classe B respecte toutes les exigences du Règlement Canadien sur le matériel brouilleur.

### Protection Against Contact with TNV Circuit

The protective cover is fastened to the modem card by means that will only allow a tool to remove the cover.

**Warning:** Removal of the protective cover will affect product safety and user safety requirements.



### **EMC, Safety, and R&TTE Directive Compliance**

The CE mark is affixed to this product to confirm compliance with the following European Community Directives:

Council Directive 2004/108/EC of 15 December 2004 on the approximation of the laws of Member States relating to electromagnetic compatibility;

And

Council Directive 2006/95/EC of 12 December 2006 on the harmonization of the laws of Member States relating to electrical equipment designed for use within certain voltage limits;

And

Council Directive 1999/5/EC of 9 March 1999 on radio equipment and telecommunications terminal equipment and the mutual recognition of their conformity.

### **New Zealand Telecom Warning Notice**

1. The grant of a Telepermit for any item of terminal equipment indicates only that Telecom has accepted that the item complies with minimum conditions for connection to its network. It indicates no endorsement of the product by Telecom, nor does it provide any sort of warranty. Above all, it provides no assurance that any item will work correctly in all respects with another item of Telepermitted equipment of a different make or model, nor does it imply that any product is compatible with all of Telecom's network services. This equipment is not capable under all operating conditions of correct operation at the higher speed which it is designated. 33.6 kbps and 56 kbps connections are likely to be restricted to lower bit rates when connected to some PSTN implementations. Telecom will accept no responsibility should difficulties arise in such circumstances.
2. Immediately disconnect this equipment should it become physically damaged, and arrange for its disposal or repair.
3. This modem shall not be used in any manner which could constitute a nuisance to other Telecom customers.
4. This device is equipped with pulse dialing, while the Telecom standard is DTMF tone dialing. There is no guarantee that Telecom lines will always continue to support pulse dialing. Use of pulse dialing, when this equipment is connected to the same line as other equipment, may give rise to 'bell tinkle' or noise and may also cause a false answer condition. Should such problems occur, the user should not contact the Telecom Faults Service. The preferred method of dialing is to use DTMF tones, as this is faster than pulse (decadic) dialing and is readily available on almost all New Zealand telephone exchanges.
5. Warning Notice: No '111' or other calls can be made from this device during a mains power failure.
6. This equipment may not provide for the effective hand-over of a call to another device connected to the same line.
7. Some parameters required for compliance with Telecom's Telepermit requirements are dependent on the equipment (PC) associated with this device. The associated equipment shall be set to operate within the following limits for compliance with Telecom's Specifications:  
For repeat calls to the same number:
  - There shall be no more than 10 call attempts to the same number within any 30-minute period for any single manual call initiation, and
  - The equipment shall go on-hook for a period of not less than 30 seconds between the end of one attempt and the beginning of the next attempt.For automatic calls to different numbers:
  - The equipment shall be set to ensure that automatic calls to different numbers are spaced such that there is no less than 5 seconds between the end of one call attempt and the beginning of another.For automatically answered incoming calls:
  - The equipment shall be set to ensure that calls are answered between 3 and 30 seconds of receipt of ringing.
8. For correct operation, total of the RNs of all devices connected to a single line at any time should not exceed 5.

**South African Notice**

This modem must be used in conjunction with an approved surge protection device.

**Thailand Approval**

Translation in Thai

“This telecom device and equipment is conform to technical standard no....”

or

“This telecom device and equipment is conform to requirement to NTC”

“เครื่องโทรคมนาคมและอุปกรณ์นี้ มีความสอดคล้องตามมาตรฐานทางเทคนิค เลขที่.....”

or

“เครื่องโทรคมนาคมและอุปกรณ์นี้ มีความสอดคล้องตามข้อกำหนดของ กทช.”

**Japan Requirements**

This device conforms to (JATE) Japan Approval Institute for Telecommunications Equipment:

MT9234ZPX-UPCI – JATE Approval A09-0124001

**International Modem Restrictions**

Some dialing and answering defaults and restrictions may vary for international modems. Changing settings may cause a modem to become non-compliant with national telecom requirements in specific countries. Also note that some software packages may have features or lack restrictions that may cause the modem to become non-compliant.

## Appendix C – Upgrading Your Modem

### Introduction

Your modem is controlled by semi-permanent software, called firmware, which is stored in flash memory. Firmware is nonvolatile; that is, it remains stored in memory when the modem is turned off. However, it can be changed by either the manufacturer or the user as bugs are fixed or new features are added. Since the firmware in your modem is stored in flash memory, you can upgrade it yourself in a few minutes by using the following procedures.

### Upgrade Overview

The upgrade procedure consists of the following steps, which are described in greater detail in the following sections.

1. Identify the model number and firmware version of your modem.
2. Identify the current version of the firmware at the Multi-Tech Web site. If your modem already has the current firmware, there is no need to upgrade it.
3. Download the upgrade file and the appropriate Flash Wizard for your modem.
4. Install the Flash Wizard and extract the firmware .HEX file from the file you downloaded.
5. Document and clear your stored parameters.
6. Upgrade the modem's firmware using the .HEX file and the Flash Wizard.
7. Restore your parameters.

### Step 1: Identify the Modem Firmware

You must know the model number and firmware version of your Multi-Tech modem to know whether or not you should upgrade it.

1. Run your favorite terminal program. If available, you can use HyperTerminal.
2. In the program's terminal window, type **AT&F**. Even if you cannot see the **AT&F** command on your screen, be sure to type it completely, and then press ENTER. If the modem does not respond with *OK*, repeat the **AT&F** command.
3. Now type **ATI**, press ENTER, and record your results. The model number and firmware version should appear similar to that shown below. In the example below, the firmware version is 1.02d.

Agere OCM v.92 MT9234ZPX-UPCI Internal Data/Fax Modem version 1.02d.

### Step 2: Identify the Current Firmware Version

Identify the current version of your modem's firmware at the Multi-Tech Web site. If your modem already has the current firmware, there is no need to upgrade it.

1. Using your favorite Web browser, go to [http://www.multitech.com/en\\_US/SUPPORT/Updates/Firmware](http://www.multitech.com/en_US/SUPPORT/Updates/Firmware)
2. Product Firmware – Select the product family to view firmware for product in that product line. Click on the down arrow and scroll down to Multimodem ZPX.
3. Look at the firmware version number for your modem.
4. If the firmware version number matches the firmware version number found in "Step 1: Identify the Modem Firmware," your modem has the current firmware version, and does not need to be upgraded.
5. If the firmware version number is greater than the firmware version number found in "Step 1: Identify the Modem Firmware," your modem has an older firmware version. Continue with "Step 3: Download the Upgrade File."

---

**Warning:** The first digit of the new firmware must match the first digit of the old firmware, or the modem may not work properly (e.g., if your current firmware version is 4.16, replace it only with 4.xx firmware, not 6.xx firmware).

---



**Step 3: Download the Upgrade File**

1. If you are not already at the MultiModem Firmware page of the Multi-Tech Web site, follow the procedure in “Step 2: Identify the Current Firmware.”
2. Download the upgrade file for your modem by clicking its name, and save the file in a temporary folder on your hard disk.
3. In the same section of the Web page, download the Flash Wizard utility by clicking it, and save it in the same folder. Alternately, install the Flash wizard from the MultiModem compact disc.

**Step 4: Extract the Upgrade Files**

1. Install the Flash Wizard utility by double-clicking the Flash Wizard file name in Windows Explorer.
2. Extract the upgrade files by double-clicking the file name. The extracted files include a .HEX file, which contains the upgrade data, and a Readme file.
3. Copy the upgrade .HEX file into the Flash Wizard folder, which, in a default installation, is at C:\Program Files\MultiTech Systems\Flash Wizard\.

**Step 5: Document and Clear Your Stored Parameters**

Before you flash your modem, you should record the parameters that are currently stored in it so you can reprogram it after flashing. After you have recorded them, send the **AT&W1Z** command to the modem to clear the stored parameters.

1. Run your favorite terminal program.
2. In the program's terminal window, type **AT&V** and press ENTER to list your modem's current parameters.
3. Record your parameters by saving the screens and sending them to your printer.
4. Type **AT&W1Z** and press ENTER to clear your stored parameters and reset your modem to factory default.
5. Close the terminal program.

**Step 6: Upgrade the Modem's Firmware**

Before you begin the following procedure, read the README.TXT file extracted from the upgrade archive file. Note the file name for the new firmware (example: ARQG125A.HEX). Also, if you are using Windows NT, you must disable Windows RAS and Microsoft Fax Service before upgrading the modem's firmware. To disable RAS and your Fax service, Click **Start | Settings | Control Panel**, and then double-click **Services**. Select **Remote Access Server**, and then click the **Startup** button. Select **Manual** as the startup type, and then click **OK**. Do the same for any fax service. Close any other programs that might be accessing the modem's Com Port.

**WARNING:** Never install an older version of firmware over a newer version. Doing this WILL DESTROY THE FLASH PROM! If the flash PROM is destroyed, the modem must be sent in for repair.

1. Run Flash Wizard by double-clicking its icon or file name, or by selecting it from the Start menu. The program begins by identifying devices attached to your computer.
2. Select the modem to be upgraded, and then click **Next** to proceed.
3. Select the port to be upgraded from the **Port** list, select the appropriate .HEX file from the **Hex File** list, and then click **Next** to continue.

**Note:** Do not use FLASHLDR.HEX. This file is used internally by Flash Wizard.

4. The **Progress** dialog box now displays the progress of the upgrade.  
**Caution:** Any disruption of the program during this stage of the upgrade can cause your modem to become inoperable. Wait for the **Next** button to become active before proceeding.
5. When the flash upgrade is complete, the message *Programming Complete* appears. Click **Next** to continue.
6. The **Results** dialog box appears next. Click **Finish** to exit Flash Wizard.

**Note:** If you are using Windows NT, be certain to enable RAS and your fax service when the operating system restarts.

**Step 7: Restore Your Parameters**

Your modem has been upgrade. You can now open your terminal program to reprogram your modem parameters or to confirm the upgrade by typing **ATI** in the terminal window and pressing ENTER.

## Appendix D – Installing in Linux

### Introduction

This appendix explains how to verify that the Multitech MT9234ZPX-UPCI modem has been detected in Linux Operating System running kernel 2.6.xx.

Assuming that the PCI card has been already installed in the system.  
Logon to the system as root.

To check which kernel version the system is running, send the following command  
“uname -a”

You should get a response like this:

```
[root@armadillo ~]# uname -a  
Linux armadillo.net 2.6.18-8.el5 #1 SMP Thu Mar 15 19:57:35 EDT 2007 i686 i686 i386 GNU/Linux
```

This particular system is running kernel 2.6.18-8.el5. For Multitech MT9234ZPX modems, Linux will use a native driver for the PCI interface already contained in the kernel. Once the system detects the modem it will assign 2 new ports to the system. Due to the nature of the interface used, two com ports will be added, but only one com port will be use to access the modem (first port). If you use the second port, the modem will not respond to any AT command.

To see how many ports the system has detected on boot. Send the following command:  
dmesg |grep -i tty

You should get a response like this:

```
[root@armadillo ~]# dmesg |grep -i tty  
serial8250: ttyS1 at I/O 0x2f8 (irq = 3) is a 16550A  
00:0f: ttyS1 at I/O 0x2f8 (irq = 3) is a 16550A  
0000:03:00.0: ttyS0 at MMIO 0xcdeffc00 (irq = 169) is a 16550A  
0000:03:00.0: ttyS2 at MMIO 0xcdeffe00 (irq = 169) is a 16550A  
Bluetooth: RFCOMM TTY layer initialized
```

The new ports detected and assigned to the card will be labeled as follow. The IRQ and the I/O address might be different in your system.

```
0000:03:00.0: ttyS0 at MMIO 0xcdeffc00 (irq = 169) is a 16550A  
0000:03:00.0: ttyS2 at MMIO 0xcdeffe00 (irq = 169) is a 16550A
```

Remember, accessing the modem, you need to always use the first port.

To verify if the modem is operational, you can use the most common terminal emulation in Linux called minicom.  
Enter minicom -s

This will bring minicom into configuration mode. You should get a response like this:

```
[root@armadillo ~]# minicom -s
minicom: WARNING: configuration file not found, using defaults
```

From the configuration menu, select “Serial Port Setup” and press Enter.

```
Configuration
Filenames and paths
File transfer protocols
Serial port setup
Modem and dialing
Screen and keyboard
Save setup as dfl
Save setup as..
Exit
    Exit from Minicom
```

This will display the Serial port settings.

```
A - Serial Device      : /dev/modem
B - Lockfile Location  : /var/lock
C - Callin Program    :
D - Callout Program   :
E - Bps/Par/Bits      : 38400 8N1
F - Hardware Flow Control : Yes
G - Software Flow Control : No

Change which setting?
```

Enter A to edit the Serial Device. Then enter the port you need to access.

As shown above the ports of interest will be :

```
0000:03:00.0: ttyS0 at MMIO 0xcdeffc00 (irq = 169) is a 16550A
0000:03:00.0: ttyS2 at MMIO 0xcdeffe00 (irq = 169) is a 16550A
```

In this case, you want to access the first port “ttyS0”.

```
A - Serial Device      : /dev/ttyS0
B - Lockfile Location  : /var/lock
C - Callin Program    :
D - Callout Program   :
E - Bps/Par/Bits      : 38400 8N1
F - Hardware Flow Control : Yes
G - Software Flow Control : No

Change which setting?
```

Press Enter to accept the change. To change any other setting, press the corresponding key. However, the modem should respond with the rest of the default settings in minicom.

To go back to the main menu, press Enter one more time.

```
Configuration
Filenames and paths
File transfer protocols
Serial port setup
Modem and dialing
Screen and keyboard
Save setup as dfl
Save setup as..
Exit
Exit from Minicom
```

To go into the minicom terminal mode select “Exit” and press Enter.

You should get a response like this:

```
Welcome to minicom 2.1
  OPTIONS: History Buffer, F-key Macros, Search History Buffer, I18n
  Compiled on Jan  7 2007, 04:48:39.
```

Press CTRL-A Z for help on special keys  
OK

Now you should be able to send AT commands to the modem.

To query the modem with the model number, send “Ati” or “ATi3” and the modem will respond as follow:

```
ati
Agere OCM V.92 MT9234ZPX-UPCI Internal Data/Fax/Voice Modem Version 1.02b
OK
```

This will verify that the modem is present and operational in the system.

To exit Minicom press the following keys:

CTRL +A , Then Z , then X.

Now you should be able to use any communication software to access the modem depending of how you want to use the modem. Linux has an extensive collection of “How to” documents with good information to configure most of the packages included in the Operating System. Please refer to such documents if you need help with particular software application.

# Index

•			
	<b>A</b>		<b>R</b>
AT commands		remote configuration	44
&D	47	escape character	44
&Q	47	result codes	46
&W	44		
O 44			<b>S</b>
autoanswer	47	solving problems	45
	<b>C</b>	sound card connection	10
call waiting	47	speakerphone	10, 49
Caller ID	47, 48	S-registers	
communication programs	45	S009	44
compression, data	48	Sync/Async Mode command	47
	<b>D</b>		<b>T</b>
data compression	48	Technical Specifications	6
DTR (Data Terminal Ready) Control command	47	telephone	
	<b>F</b>	connecting	10
firmware		line	46
upgrading	57	terminal mode	45
flash memory	57	testing the modem	46
Flash Wizard upgrade utility	58	voice communications	48
	<b>G</b>	troubleshooting	45
garbage characters	48		<b>U</b>
	<b>I</b>	upgrading the modem	57
international restrictions	56		<b>V</b>
	<b>L</b>	voice mail	10, 48
loopback tests	49	voice tests	48
lost data	48		<b>W</b>
	<b>M</b>	Windows 7 installation	12
microphone	10	Windows installer	7
	<b>N</b>		<b>X</b>
New Zealand regulations	55	Xmodem	47
	<b>P</b>		<b>Y</b>
patch cord for sound card	10	Ymodem/G protocol	47
phone connection	10		<b>Z</b>
protocols	47	Zmodem protocol	47
•			

Компания «Океан Электроники» предлагает заключение долгосрочных отношений при поставках импортных электронных компонентов на взаимовыгодных условиях!

Наши преимущества:

- Поставка оригинальных импортных электронных компонентов напрямую с производств Америки, Европы и Азии, а так же с крупнейших складов мира;
- Широкая линейка поставок активных и пассивных импортных электронных компонентов (более 30 млн. наименований);
- Поставка сложных, дефицитных, либо снятых с производства позиций;
- Оперативные сроки поставки под заказ (от 5 рабочих дней);
- Экспресс доставка в любую точку России;
- Помощь Конструкторского Отдела и консультации квалифицированных инженеров;
- Техническая поддержка проекта, помощь в подборе аналогов, поставка прототипов;
- Поставка электронных компонентов под контролем ВП;
- Система менеджмента качества сертифицирована по Международному стандарту ISO 9001;
- При необходимости вся продукция военного и аэрокосмического назначения проходит испытания и сертификацию в лаборатории (по согласованию с заказчиком);
- Поставка специализированных компонентов военного и аэрокосмического уровня качества (Xilinx, Altera, Analog Devices, Intersil, Interpoint, Microsemi, Actel, Aeroflex, Peregrine, VPT, Syfer, Eurofarad, Texas Instruments, MS Kennedy, Miteq, Cobham, E2V, MA-COM, Hittite, Mini-Circuits, General Dynamics и др.);

Компания «Океан Электроники» является официальным дистрибьютором и эксклюзивным представителем в России одного из крупнейших производителей разъемов военного и аэрокосмического назначения «JONHON», а так же официальным дистрибьютором и эксклюзивным представителем в России производителя высокотехнологичных и надежных решений для передачи СВЧ сигналов «FORSTAR».



## JONHON

«JONHON» (основан в 1970 г.)

Разъемы специального, военного и аэрокосмического назначения:

(Применяются в военной, авиационной, аэрокосмической, морской, железнодорожной, горно- и нефтедобывающей отраслях промышленности)

«FORSTAR» (основан в 1998 г.)

ВЧ соединители, коаксиальные кабели,  
кабельные сборки и микроволновые компоненты:

(Применяются в телекоммуникациях гражданского и специального назначения, в средствах связи, РЛС, а так же военной, авиационной и аэрокосмической отраслях промышленности).



Телефон: 8 (812) 309-75-97 (многоканальный)

Факс: 8 (812) 320-03-32

Электронная почта: [ocean@oceanchips.ru](mailto:ocean@oceanchips.ru)

Web: <http://oceanchips.ru/>

Адрес: 198099, г. Санкт-Петербург, ул. Калинина, д. 2, корп. 4, лит. А