

**Insulated  
Industry Standard**

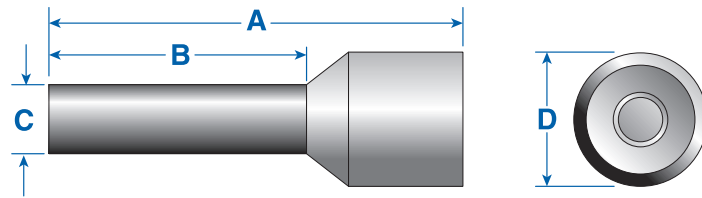
Ferrules insure reliable electrical connections when terminating stranded flexible wire in terminal blocks, circuit breakers or other control devices. Insulated ferrules prevent conductor breakage due to bending, wire stress or vibration while facilitating wire insertion into the terminal clamp.

Altech's standard insulated ferrules are color coded by conductor size for convenient identification.

To ensure efficient ferrule crimping, always select the smallest ferrule diameter that fits the wire and use only professional crimping tools. (Please refer to the ordering pages and the Crimper Selector Guide on page 98.)

- Sleeve: polypropylene
- Tube: tin-plated copper

**INDUSTRY STANDARD FERRULES**



**Tested According To:**

- CSA Std C22.2 No. 65-93 - Wire Connectors
- CSA Std C22.2 No. 188-M1983 - Splicing Wire and Cable Connectors
- ANSI/UL Std No. 486A - Wire Connectors and Soldering Lugs for Use with Copper Conductors
- ANSI/UL Std No. 486C - Splicing Wire Connectors

AWG (mm2)	Color	Type	Cat. No.	Stripping Length mm (in.)	A	B	C	D	Std. Pk.*
24 (.25)	Lt. Blue	H0.25/6	2620.0	6.0(.24)	10.0 (.39)	6.0 (.24)	1.2 (.05)	2.3 (.09)	500/100
24 (.25)	Lt. Blue	H0.25/8	2621.0	8.0(.31)	12.0 (.47)	8.0 (.31)	1.2 (.05)	2.3 (.09)	500/100
22 (.34)	Turquoise	H0.34/6	2622.0	6.0(.24)	10.0 (.39)	6.0 (.24)	1.2 (.05)	2.5 (.10)	500/100
22 (.34)	Turquoise	H0.34/8	2623.0	8.0(.31)	12.0 (.47)	8.0 (.31)	1.2 (.05)	2.5 (.10)	500/100
20 (.50)	Orange	H0.50/6	2397.0	6.0(.24)	12.0 (.47)	6.0 (.24)	1.3 (.05)	2.8 (.11)	500/100
20 (.50)	Orange	H0.50/8	2201.0	8.0(.31)	14.0 (.55)	8.0 (.31)	1.3 (.05)	2.8 (.11)	500/100
18 (.75)	White	H0.75/6	2398.0	6.0(.24)	12.0 (.47)	6.0 (.24)	1.5 (.06)	3.3 (.13)	500/100
18 (.75)	White	H0.75/8	2202.0	8.0(.31)	14.0 (.55)	8.0 (.31)	1.5 (.06)	3.3 (.13)	500/100
18 (1.00)	Yellow	H1.00/6	2399.0	6.0(.24)	12.0 (.47)	6.0 (.24)	1.7 (.07)	3.5 (.14)	500/100
18 (1.00)	Yellow	H1.00/8	2203.0	8.0(.31)	14.0 (.55)	8.0 (.31)	1.7 (.07)	3.5 (.14)	500/100
16 (1.50)	Red	H1.50/8	2204.0	8.0(.31)	14.0 (.55)	8.0 (.31)	2.0 (.08)	4.0 (.16)	500/100
16 (1.50)	Red	H1.50/10	2400.0	10.0(.39)	16.0 (.63)	10.0 (.39)	2.0 (.08)	4.0 (.16)	500/100
16 (1.50)	Red	H1.50/18	2205.0	18.0(.71)	24.0 (.94)	18.0 (.71)	2.0 (.08)	4.0 (.16)	500/100
14 (2.50)	Blue	H2.50/8	2206.0	8.0(.31)	14.0 (.55)	8.0 (.31)	2.5 (.10)	4.7 (.19)	500/100
14 (2.50)	Blue	H2.50/12	2401.0	12.0(.47)	18.0 (.71)	12.0 (.47)	2.5 (.10)	4.7 (.19)	500/100
14 (2.50)	Blue	H2.50/18	2207.0	18.0(.71)	24.0 (.94)	18.0 (.71)	2.5 (.10)	4.7 (.19)	500/100
12 (4.00)	Gray	H4.00/10	2208.0	10.0(.39)	17.0 (.67)	10.0 (.39)	3.2 (.13)	5.4 (.21)	500/100
12 (4.00)	Gray	H4.00/12	2402.0	12.0(.47)	20.0 (.79)	12.0 (.47)	3.2 (.13)	5.4 (.21)	500/100
12 (4.00)	Gray	H4.00/18	2209.0	18.0(.71)	26.0 (1.02)	18.0 (.71)	3.2 (.13)	5.4 (.21)	100
10 (6.00)	Black	H6.00/12	2210.0	12.0(.47)	20.0 (.79)	12.0 (.47)	3.9 (.15)	6.9 (.27)	100
10 (6.00)	Black	H6.00/18	2211.0	18.0(.71)	26.0 (1.02)	18.0 (.71)	3.9 (.15)	6.9 (.27)	100
8 (10.00)	Ivory	H10.0/12	2212.0	12.0(.47)	22.0 (.87)	12.0 (.47)	4.9 (.19)	8.4 (.33)	100
8 (10.00)	Ivory	H10.0/18	2213.0	18.0(.71)	28.0 (1.10)	18.0 (.71)	4.9 (.19)	8.4 (.33)	100
6 (16.00)	Green	H16.0/12	2214.0	12.0(.47)	24.0 (.94)	12.0 (.47)	6.2 (.24)	9.6 (.38)	100
6 (16.00)	Green	H16.0/18	2215.0	18.0(.71)	28.0 (1.10)	18.0 (.71)	6.2 (.24)	9.6 (.38)	100
4 (25.00)	Brown	H25.0/18	2267.0	18.0(.71)	30.0 (1.18)	18.0 (.71)	7.7 (.30)	12.0(.47)	50
4 (25.00)	Brown	H25.0/22	2272.0	22.0(.87)	36.0 (1.42)	22.0 (.87)	7.7 (.30)	12.0(.47)	50
2 (35.00)	Beige	H35.0/18	2276.0	18.0(.71)	30.0 (1.18)	18.0 (.71)	8.7 (.34)	13.5(.53)	50
2 (35.00)	Beige	H35.0/25	2390.0	25.0(.98)	39.0 (1.54)	25.0 (.98)	8.7 (.34)	13.5(.53)	50
1 (50.00)	Olive	H50.0/20	2500.0	20.0(.79)	36.0 (1.42)	20.0 (.79)	10.9(.43)	16.0(.63)	50
2/0 (70.00)	Yellow	H70.0/21	2786.0	20.0(.79)	37.0 (1.46)	20.0 (.79)	13.4(.53)	17.0(.67)	25
3/0 (95.00)	Red	H95.0/25	2787.0	25.0(.98)	44.0 (1.73)	25.0 (.98)	15.4(.61)	19.0(.75)	25
4/0 (120.00)	Blue	H120.0/27	2788.0	27.0(1.06)	48.0 (1.89)	27.0 (1.06)	17.6(.69)	22.4(.88)	25
250MCM(150.0)	Yellow	H150.0/27	2789.0	32.0(1.26)	58.0 (2.28)	32.0 (1.26)	20.5(.81)	25.0(.98)	25

**CRIMPER SELECTOR  
GUIDE**  
See page 109.

\* Different standard packs are available as shown. To order the desired standard pack, please use the quantity required as a suffix to the cat. no.  
Example for 100 standard pack: Type H0.25/6, Cat. No. 2620.0/100

# Ferrules

## Insulated DIN Standard

Ferrules insure reliable electrical connections when terminating stranded flexible wire in terminal blocks, circuit breakers or other control devices.

Insulated ferrules prevent conductor breakage due to bending, wire stress or vibration while facilitating wire insertion into the terminal clamp.

Altech's DIN standard ferrules are in compliance with DIN requirements, making them ideal for export applications. They also have a specified color code convention that differs from the color code used for Altech's industry standard ferrules.

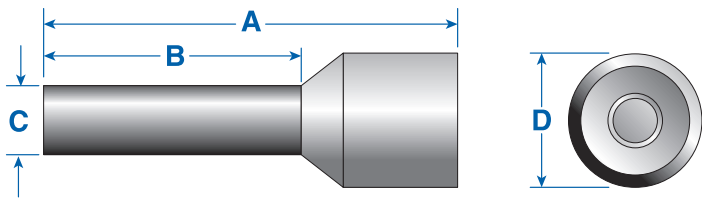
To ensure efficient ferrule crimping, always select the smallest ferrule diameter that fits the wire and use only professional crimping tools. (Please refer to the ordering pages and the Crimper Selector Guide on page 98.)

- Sleeve: polypropylene
- Tube: tin plated copper

### CRIMPER SELECTOR GUIDE

See page 109.

### DIN STANDARD FERRULES



**Tested According To:**

- CSA Std C22.2 No. 65-93 - Wire Connectors
- CSA Std C22.2 No. 188-M1983 - Splicing Wire and Cable Connectors
- ANSI/UL Std No. 486A - Wire Connectors and Soldering Lugs for Use with Copper Conductors
- ANSI/UL Std No. 486C - Splicing Wire Connectors

AWG (mm2)	Color	Type	Cat. No.	Stripping Length mm (in.)	A	B	C	D	Std. Pk.*
20 (.50)	White	H0.50/6	2863.0	6.0(.24)	12.0 (.47)	6.0 (.24)	1.3 (.05)	2.8 (.11)	500/100
20 (.50)	White	H0.50/8	2864.0	8.0(.31)	14.0 (.55)	8.0 (.31)	1.3 (.05)	2.8 (.11)	500/100
20 (.50)	White	H0.50/10	2865.0	10.0(.39)	16.0 (.63)	10.0 (.39)	1.3 (.05)	2.8 (.11)	500/100
18 (.75)	Gray	H0.75/6	2866.0	6.0(.24)	12.0 (.47)	6.0 (.24)	1.5 (.06)	3.3 (.13)	500/100
18 (.75)	Gray	H0.75/8	2867.0	8.0(.31)	14.0 (.55)	8.0 (.31)	1.5 (.06)	3.3 (.13)	500/100
18 (.75)	Gray	H0.75/10	2868.0	10.0(.39)	16.0 (.63)	10.0 (.39)	1.5 (.06)	3.3 (.13)	500/100
18 (.75)	Gray	H0.75/12	2869.0	12.0(.47)	18.0 (.71)	12.0 (.47)	1.5 (.06)	3.3 (.13)	500/100
18 (1.00)	Red	H1.00/6	2870.0	6.0(.24)	12.0 (.47)	6.0 (.24)	1.7 (.07)	3.5 (.14)	500/100
18 (1.00)	Red	H1.00/8	2871.0	8.0(.31)	14.0 (.55)	8.0 (.31)	1.7 (.07)	3.5 (.14)	500/100
18 (1.00)	Red	H1.00/10	2872.0	10.0(.39)	16.0 (.63)	10.0 (.39)	1.7 (.07)	3.5 (.14)	500/100
18 (1.00)	Red	H1.00/12	2840.0	12.0(.47)	18.0 (.71)	12.0 (.47)	1.7 (.07)	3.5 (.14)	500/100
16 (1.50)	Black	H1.50/8	2841.0	8.0(.31)	14.0 (.55)	8.0 (.31)	2.0 (.08)	4.0 (.16)	500/100
16 (1.50)	Black	H1.50/10	2842.0	10.0(.39)	16.0 (.63)	10.0 (.39)	2.0 (.08)	4.0 (.16)	500/100
16 (1.50)	Black	H1.50/12	2843.0	12.0(.47)	18.0 (.71)	12.0 (.47)	2.0 (.08)	4.0 (.16)	500/100
16 (1.50)	Black	H1.50/18	2844.0	18.0(.71)	24.0 (.94)	18.0 (.71)	2.0 (.08)	4.0 (.16)	500/100
14 (2.50)	Blue	H2.50/8	2845.0	8.0(.31)	14.0 (.55)	8.0 (.31)	2.5 (.10)	4.7 (.19)	500/100
14 (2.50)	Blue	H2.50/12	2846.0	12.0(.47)	18.0 (.71)	12.0 (.47)	2.5 (.10)	4.7 (.19)	500/100
14 (2.50)	Blue	H2.50/18	2847.0	18.0(.71)	24.0 (.94)	18.0 (.71)	2.5 (.10)	4.7 (.19)	500/100
12 (4.00)	Gray	H4.00/10	2848.0	10.0(.39)	17.0 (.71)	10.0 (.39)	3.2 (.13)	5.4 (.21)	500/100
12 (4.00)	Gray	H4.00/12	2849.0	12.0(.47)	20.0 (.79)	12.0 (.47)	3.2 (.13)	5.4 (.21)	500/100
12 (4.00)	Gray	H4.00/18	2850.0	18.0(.71)	26.0 (1.02)	18.0 (.71)	3.2 (.13)	5.4 (.21)	100
10 (6.00)	Yellow	H6.00/12	2851.0	12.0(.47)	20.0 (.79)	12.0 (.47)	3.9 (.16)	6.9 (.27)	100
10 (6.00)	Yellow	H6.00/18	2852.0	18.0(.71)	26.0 (1.02)	18.0 (.71)	3.9 (.16)	6.9 (.27)	100
8 (10.00)	Red	H10.00/12	2853.0	12.0(.47)	22.0 (.87)	12.0 (.47)	4.9 (.20)	8.4 (.33)	100
8 (10.00)	Red	H10.00/18	2854.0	18.0(.71)	28.0 (1.10)	18.0 (.71)	4.9 (.20)	8.4 (.33)	100
6 (16.00)	Blue	H16.00/12	2855.0	12.0(.47)	24.0 (.87)	12.0 (.47)	6.2 (.24)	9.6 (.38)	100
6 (16.00)	Blue	H16.00/18	2856.0	18.0(.71)	28.0 (1.10)	18.0 (.71)	6.2 (.24)	9.6 (.38)	100
4 (25.00)	Yellow	H25.00/18	2857.0	18.0(.71)	30.0 (1.18)	18.0 (.71)	7.7 (.30)	12.0 (.47)	50
4 (25.00)	Yellow	H25.00/22	2858.0	22.0(.87)	36.0 (1.5)	22.0 (.87)	7.7 (.30)	12.0 (.47)	50
2 (35.00)	Red	H35.00/18	2859.0	18.0(.71)	30.0 (1.18)	18.0 (.71)	8.7 (.34)	13.5 (.53)	50
2 (35.00)	Red	H35.00/25	2860.0	25.0(.98)	39.0 (1.54)	25.0 (.98)	8.7 (.34)	13.5 (.53)	50
1 (50.00)	Blue	H50.00/20	2861.0	20.0(.79)	36.0 (1.5)	20.0 (.79)	10.9 (.43)	16.0 (.63)	50

\* Different standard packs are available as shown. To order the desired standard pack, please use the quantity required as a suffix to the cat. no.  
Example for 100 standard pack: Type H0.50/6, Cat. No. 2863.0/100

**Uninsulated**

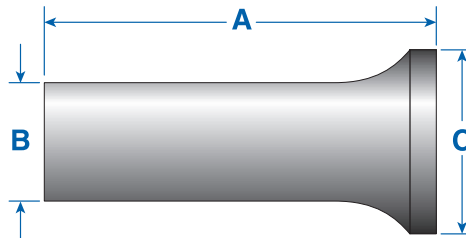
Ferrules insure reliable electrical connections when terminating stranded flexible wire in terminal blocks, circuit breakers or other control devices.

Uninsulated ferrules prevent wire strands from fraying and breaking and are extremely cost effective. Their shorter lengths and uninsulated bodies offer advantages when making terminations in printed circuit board terminal blocks and in other terminal blocks with smaller clamps or narrow widths.

To ensure efficient ferrule crimping, always select the smallest ferrule diameter that fits the wire and use only professional crimping tools. (Please refer to the ordering pages and the Crimper Selector Guide on page 109.)

•Tube: tin plated copper

**UNINSULATED FERRULES**



**Tested According To:**

- CSA Std C22.2 No. 65-93 - Wire Connectors
- CSA Std C22.2 No. 188-M1983 - Splicing Wire and Cable Connectors
- ANSI/UL Std No. 486A - Wire Connectors and Soldering Lugs for Use with Copper Conductors
- ANSI/UL Std No. 486C - Splicing Wire Connectors

	AWG (mm2)	Type	Cat. No.	Stripping Length mm (in.)	Ferrule Dimensions mm (in.)			Std. Pk.*
					A	B	C	
	20 (.50)	H0.50/6	2216.0	6.0 (.24)	6.0 (.24)	1.3 (.05)	2.1 (.08)	1000/100
	18 (.75)	H0.75/6	2217.0	6.0 (.24)	6.0 (.24)	1.5 (.06)	2.3 (.09)	1000/100
	18 (.75)	H0.75/10	2218.0	10.0 (.39)	10.0 (.39)	1.5 (.06)	2.3 (.09)	1000/100
	18 (1.00)	H1.00/6	2219.0	6.0 (.24)	6.0 (.24)	1.7 (.07)	2.5 (.10)	1000/100
	18 (1.00)	H1.00/10	2220.0	10.0 (.39)	10.0 (.39)	1.7 (.07)	2.5 (.10)	1000/100
	16 (1.50)	H1.50/7	2221.0	7.0 (.28)	7.0 (.28)	2.3 (.09)	2.8 (.11)	1000/100
	16 (1.50)	H1.50/10	2222.0	10.0 (.39)	10.0 (.39)	2.3 (.09)	2.8 (.11)	1000/100
	14 (2.50)	H2.50/7	2223.0	7.0 (.28)	7.0 (.28)	2.5 (.10)	3.4 (.13)	1000/100
	14 (2.50)	H2.50/12	2224.0	12.0 (.47)	12.0 (.47)	2.5 (.10)	3.4 (.13)	1000/100
	12 (4.00)	H4.00/9	2225.0	9.0 (.35)	9.0 (.35)	3.2 (.13)	4.0 (.16)	1000/100
	12 (4.00)	H4.00/12	2226.0	12.0 (.47)	12.0 (.47)	3.2 (.13)	4.0 (.16)	1000/100
	10 (6.00)	H6.00/12	2227.0	12.0 (.47)	12.0 (.47)	3.9 (.15)	4.7 (.19)	500/100
	10 (6.00)	H6.00/15	2388.0	15.0 (.59)	15.0 (.59)	3.9 (.15)	4.7 (.19)	500/100
	8 (10.00)	H10.00/12	2228.0	12.0 (.47)	12.0 (.47)	4.9 (.19)	5.8 (.23)	500/100
	8 (10.00)	H10.00/15	2389.0	15.0 (.59)	15.0 (.59)	4.9 (.19)	5.8 (.23)	500/100
	8 (10.00)	H10.00/18	2229.0	18.0 (.71)	18.0 (.71)	4.9 (.19)	5.8 (.23)	500/100
	6 (16.00)	H16.00/12	2391.0	12.0 (.47)	12.0 (.47)	6.2 (.24)	7.5 (.30)	500/100
	6 (16.00)	H16.00/15	2392.0	15.0 (.59)	15.0 (.59)	6.2 (.24)	7.5 (.30)	500/100
	6 (16.00)	H16.00/18	2393.0	18.0 (.71)	18.0 (.71)	6.2 (.24)	7.5 (.30)	100
	4 (25.00)	H25.00/15	2394.0	15.0 (.59)	15.0 (.59)	7.7 (.30)	9.5 (.37)	500/100
	4 (25.00)	H25.00/18	2395.0	18.0 (.71)	18.0 (.71)	7.7 (.30)	9.5 (.37)	100
	2 (35.00)	H35.00/18	2396.0	18.0 (.71)	18.0 (.71)	8.7 (.34)	11.0 (.43)	100
	1 (50.00)	H50.00/32	2816.0	32.0 (1.26)	32.0 (1.26)	10.9 (.43)	13.0 (.51)	100
	2/0 (70.00)	H70.00/25	2790.0	25.0 (0.98)	25.0 (.98)	13.3 (.52)	15.0 (.59)	100
	3/0 (95.00)	H95.00/32	2791.0	32.0 (1.26)	32.0 (1.26)	15.3 (.60)	17.0 (.67)	50
	4/0 (120.00)	H120.00/32	2792.0	32.0 (1.26)	32.0 (1.26)	17.5 (.69)	19.0 (.75)	25
	250MCM(150.00)	H150.00/32	2793.0	32.0 (1.26)	32.0 (1.26)	19.5 (.77)	21.0 (.83)	25
	350MCM(185.00)	H185.00/32	2815.0	32.0 (1.26)	32.0 (1.26)	21.2 (.83)	23.5 (.93)	25

**CRIMPER SELECTOR GUIDE**

See page 109.

\* Different standard packs are available as shown. To order the desired standard pack, please use the quantity required as a suffix to the cat. no.  
 Example for 100 standard pack: Type H0.50/6, Cat. No. 2216.0/100

# Ferrules

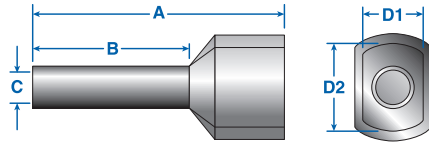
## Dual Wire Insulated

Dual Wire Ferrules have larger diameters and special shaped sleeves that accept two conductors of the same or different size. They provide an efficient connection of multiple wires in the same terminal clamp or simplify wire jumpering between terminal clamps. They are color coded with the same convention as the insulated DIN standard ferrules.

To ensure efficient ferrule crimping always select the smallest ferrule diameter that fits the wire and use only professional crimping tools. (Please refer to the ordering pages and the Crimper Selector Guide on page 109.)

- Sleeve: polypropylene
- Tube: tin plated copper

## DUAL WIRE FERRULES

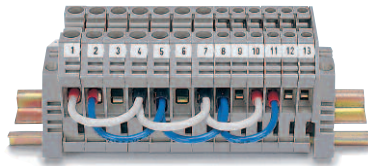


**Tested According To:**  
 CSA Std C22.2 No. 65-93 - Wire Connectors  
 CSA Std C22.2 No. 188-M1983 - Splicing Wire and Cable Connectors  
 ANSI/UL Std No. 486A - Wire Connectors and Soldering Lugs for Use with Copper Conductors  
 ANSI/UL Std No. 486C - Splicing Wire Connectors

Wires x AWG (mm <sup>2</sup> )	Color	Type	Cat. No.	Stripping Length mm (in.)	A	B	C	D1	D2	Std. Pk.*
2x20 (2x.50)	White	H2x0.50/8	2794.0	11.0 (.43)	14.6 (.57)	8.2 (.32)	1.7 (.07)	3.0 (.12)	5.0 (.20)	500/100
2x18 (2x.75)	Gray	H2x0.75/8	2775.0	11.0 (.43)	14.6 (.57)	8.2 (.32)	2.0 (.08)	3.0 (.12)	5.5 (.22)	500/100
2x18 (2x.75)	Gray	H2x0.75/10	2795.0	13.0 (.51)	16.4 (.65)	10.0 (.39)	2.0 (.08)	3.0 (.12)	5.5 (.22)	500/100
2x18 (2x1.0)	Red	H2x1.00/8	2776.0	11.0 (.43)	15.4 (.61)	8.2 (.32)	2.4 (.09)	3.2 (.13)	5.8 (.23)	500/100
2x18 (2x1.0)	Red	H2x1.00/18	2796.0	21.0 (.83)	25.2 (.99)	18.0 (.71)	2.4 (.09)	3.2 (.13)	5.8 (.23)	500/100
2x16 (2x1.5)	Black	H2x1.50/8	2777.0	12.0 (.47)	15.8 (.62)	8.2 (.32)	2.6 (.10)	3.6 (.14)	6.5 (.26)	500/100
2x16 (2x1.5)	Black	H2x1.50/12	2797.0	16.0 (.63)	19.6 (.77)	12.0 (.47)	2.6 (.10)	3.6 (.14)	6.5 (.26)	500/100
2x14 (2x2.5)	Blue	H2x2.50/10	2778.0	14.0 (.55)	18.5 (.73)	10.0 (.39)	3.3 (.13)	4.5 (.18)	8.0 (.31)	500/100
2x14 (2x2.5)	Blue	H2x2.50/12	2798.0	17.0 (.67)	20.5 (.80)	12.0 (.47)	3.3 (.13)	4.5 (.18)	8.0 (.31)	500/100
2x12 (2x4.0)	Gray	H2x4.00/12	2799.0	16.0 (.63)	22.0 (.87)	12.0 (.47)	3.9 (.15)	5.2 (.20)	9.0 (.35)	100
2x10 (2x6.0)	Yellow	H2x6.00/12	2800.0	18.0 (.71)	23.0 (.91)	12.0 (.47)	5.0 (.20)	6.2 (.24)	11.4 (.45)	100
2x8 (2x10.0)	Red	H2x10.00/12	2801.0	18.0 (.71)	24.0 (.94)	12.0 (.47)	6.2 (.24)	7.6 (.30)	13.4 (.53)	100
2X6 (2x16.0)	Blue	H2x16.00/16	2802.0	20.0 (.79)	29.0 (1.14)	16.0 (.63)	8.9 (.35)	9.5 (.37)	17.2 (.68)	100/50

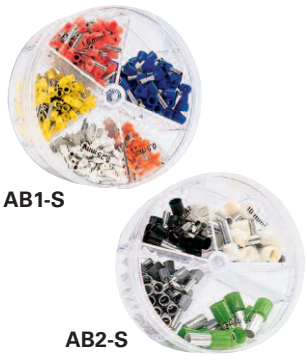
## INSULATED FERRULES Assortment Box

Handy Assortment Boxes for convenient dispensing and storage of Industry and DIN Standard Insulated Ferrules. Types AB1-S and AB1-D are equipped with five different ferrule sizes. Types AB2-S and AB2-D are equipped with four different ferrule sizes. Contents of each box is listed. Dimensions for industry and DIN standard insulated ferrules are listed on pages 106.



\* Different standard packs are available for many ferrules. To order the desired standard pack, please use the quantity required as a suffix to the Cat. No.

**Example: Type H2x0.50/0, Cat. No. 2794.0/100 for a standard pack of 100**



Ferrule Qty.	AWG (mm <sup>2</sup> )	Ferrule Type	Ferrule Cat. No.	Ferrule Color	Type	Cat. No.	Std. Pk.
<b>AB1-S Industry Standard</b>					<b>AB1-S</b>	<b>2884.9</b>	<b>1</b>
50	20 (.50)	H0.50/8	2201.0	Orange			
100	20 (.75)	H0.75/8	2202.0	White			
100	18 (1.00)	H1.00/6	2399.0	Yellow			
100	16 (1.50)	H1.50/8	2204.0	Red			
50	14 (2.50)	H2.50/8	2206.0	Blue			
<b>AB2-S Industry Standard</b>					<b>AB2-S</b>	<b>2885.9</b>	<b>1</b>
50	12 (4.0)	H4.00/10	2208.0	Gray			
20	10 (6.0)	H6.00/12	2210.0	Black			
20	8 (10.0)	H10.00/12	2212.0	Ivory			
10	6 (16.0)	H16.00/12	2214.0	Green			
<b>AB1-D DIN Standard</b>					<b>AB1-D</b>	<b>2884.0</b>	<b>1</b>
50	20 (.50)	H0.50/6	2864.0	White			
100	20 (.75)	H0.75/8	2867.0	Gray			
100	18 (1.0)	H1.00/8	2871.0	Red			
100	16 (1.5)	H1.50/8	2841.0	Black			
50	14 (2.5)	H2.50/8	2845.0	Blue			
<b>AB2-D DIN Standard</b>					<b>AB2-D</b>	<b>2885.0</b>	<b>1</b>
50	12 (4.00)	H4.00/10	2848.0	Gray			
20	10 (6.00)	H6.00/12	2851.0	Yellow			
20	8 (10.00)	H10.00/12	2853.0	Red			
10	6 (16.00)	H16.00/12	2855.0	Blue			

Компания «Океан Электроники» предлагает заключение долгосрочных отношений при поставках импортных электронных компонентов на взаимовыгодных условиях!

Наши преимущества:

- Поставка оригинальных импортных электронных компонентов напрямую с производств Америки, Европы и Азии, а так же с крупнейших складов мира;
- Широкая линейка поставок активных и пассивных импортных электронных компонентов (более 30 млн. наименований);
- Поставка сложных, дефицитных, либо снятых с производства позиций;
- Оперативные сроки поставки под заказ (от 5 рабочих дней);
- Экспресс доставка в любую точку России;
- Помощь Конструкторского Отдела и консультации квалифицированных инженеров;
- Техническая поддержка проекта, помощь в подборе аналогов, поставка прототипов;
- Поставка электронных компонентов под контролем ВП;
- Система менеджмента качества сертифицирована по Международному стандарту ISO 9001;
- При необходимости вся продукция военного и аэрокосмического назначения проходит испытания и сертификацию в лаборатории (по согласованию с заказчиком);
- Поставка специализированных компонентов военного и аэрокосмического уровня качества (Xilinx, Altera, Analog Devices, Intersil, Interpoint, Microsemi, Actel, Aeroflex, Peregrine, VPT, Syfer, Eurofarad, Texas Instruments, MS Kennedy, Miteq, Cobham, E2V, MA-COM, Hittite, Mini-Circuits, General Dynamics и др.);

Компания «Океан Электроники» является официальным дистрибьютором и эксклюзивным представителем в России одного из крупнейших производителей разъемов военного и аэрокосмического назначения «JONHON», а так же официальным дистрибьютором и эксклюзивным представителем в России производителя высокотехнологичных и надежных решений для передачи СВЧ сигналов «FORSTAR».



## JONHON

«JONHON» (основан в 1970 г.)

Разъемы специального, военного и аэрокосмического назначения:

(Применяются в военной, авиационной, аэрокосмической, морской, железнодорожной, горно- и нефтедобывающей отраслях промышленности)

«FORSTAR» (основан в 1998 г.)

ВЧ соединители, коаксиальные кабели, кабельные сборки и микроволновые компоненты:

(Применяются в телекоммуникациях гражданского и специального назначения, в средствах связи, РЛС, а так же военной, авиационной и аэрокосмической отраслях промышленности).



Телефон: 8 (812) 309-75-97 (многоканальный)

Факс: 8 (812) 320-03-32

Электронная почта: [ocean@oceanchips.ru](mailto:ocean@oceanchips.ru)

Web: <http://oceanchips.ru/>

Адрес: 198099, г. Санкт-Петербург, ул. Калинина, д. 2, корп. 4, лит. А