

# NBA3N012C

## 3.3 V Automotive Grade LVDS Line Receiver

### Description

The NBA3N012C is a single LVCMOS Output Differential Line Receiver for Low Power and high data rate Automotive applications. The device is optimized to support data rate higher than 400 Mbps (200 MHz). The NBA3N012C accept directly LVDS signal as an input and translate it to LVCMOS output levels. The device includes an input termination resistor minimizing number of the external components for point to point interface.

The NBA3N012C is offered in 5 lead SOT23 package and it is shipping in 3000 pcs tape & reel.

### Features

- Compatible with TIA/EIA-644A Standard
- Automotive Grade AECQ-100 Grade 1
- > 400 Mbps (200 MHz) Data Rate
- Operating Range:  $V_{DD} = 3.3 \text{ V} \pm 0.3 \text{ V}$
- Typical 100 ps Differential Skew
- Maximum Propagation Delay of 3.5 ns
- Low Power Dissipation (Typical 20 mW @ 3.3 V)
- SOT23-5 Lead Package with Pinout optimized for easy PCB Layout
- Integrated Line Termination Resistor of 100  $\Omega$
- Power Down High Impedance on LVDS Pins
- Inputs Accept LVDS/CML/LVPECL Signals
- Temperature Operating Range  $-40^{\circ}\text{C}$  to  $+125^{\circ}\text{C}$
- These are Pb-Free Devices

### Typical Applications:

- Automotive: Head Lamp Lighting for Cars
- Telecom: Wireless, Microwave and Optical

**Table 1. PIN DESCRIPTION**

Pin Number	Pin Name	I/O Type	Description
1	$V_{DD}$		Power Supply Pin
2	GND		Ground Pin
3	IN	Input	Non-Inverting Input Pin
4	$\overline{\text{IN}}$	Input	Inverting Input Pin
5	Q	Output	Output Pin

**Table 2. TRUTH TABLE**

Inputs	Output
[IN] – [ $\overline{\text{IN}}$ ]	Q
$V_{ID} \geq +0.1 \text{ V}$	H
$V_{ID} \leq -0.1 \text{ V}$	L
Full Fail Safe OPEN/SHORT or terminated	H or L



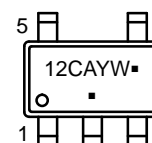
**ON Semiconductor**<sup>®</sup>

[www.onsemi.com](http://www.onsemi.com)



**SOT23-5  
DT SUFFIX  
CASE 527AH**

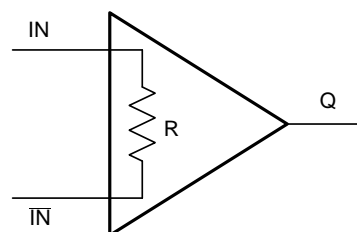
### MARKING DIAGRAM



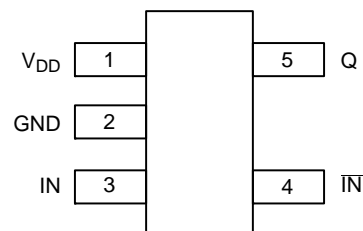
12C = Specific Device Code  
 A = Assembly Code  
 Y = Year  
 W = Work Week  
 ■ = Pb-Free Package

(Note: Microdot may be in either location)

### LOGIC DIAGRAM



### PINOUT DIAGRAM



### ORDERING INFORMATION

Device	Package	Shipping <sup>†</sup>
NBA3N012CSNT1G	SOT23-5 (Pb-Free)	3000 / Tape & Reel

<sup>†</sup>For information on tape and reel specifications, including part orientation and tape sizes, please refer to our Tape and Reel Packaging Specification Brochure, BRD8011/D.

# NBA3N012C

**Table 3. ATTRIBUTES** (Note 1)

Characteristics			Value
ESD Protection	Human Body Model (JEDEC Standard 22, Method A114-E)	All Pins	≥ 8 kV
	Charge Device Model (JEDEC Standard 22, Method C101D)	All Pins	≥ 1.25 kV
Moisture Sensitivity (Note 1)			Level 1
Flammability Rating	Oxygen Index: 28 to 34		UL 94 Code V-0 A 0.125 in 28 to 34

1. For additional information, see Application Note AND8003/D

**Table 4. MAXIMUM RATINGS** (Note 2)

Symbol	Parameter	Rating	Unit
V <sub>DD</sub>	Supply voltage	-0.30 ≤ V <sub>DD</sub> ≤ +4.0	V
V <sub>IN</sub>	Input Voltage (IN, $\overline{IN}$ ) LVDS	-0.30 to +3.90	V
V <sub>Q</sub>	Output Voltage (Pin Q) LVCMOS	-0.30 to (V <sub>DD</sub> + 0.30)	V
I <sub>OS</sub>	Output Short Circuit Current (Pin Q)	-100	mA
T <sub>j</sub>	Maximum Junction Temperature	135	°C
T <sub>stg</sub>	Storage Temperature Range	-65 to +150	°C
θ <sub>JC</sub>	Thermal resistance (Junction-to-Case) – (Note 3)	107	°C/W
θ <sub>JA</sub>	Thermal resistance (Junction-to-Ambient) – (Note 3)	138.5	°C/W
T <sub>sol</sub>	Lead Temperature Soldering (4 Seconds) – SOLDERM/D	260	°C
PD	Package Power Dissipation @ 25°C – Derating of 7.22 mW/°C above 25°C	794	mW

Stresses exceeding those listed in the Maximum Ratings table may damage the device. If any of these limits are exceeded, device functionality should not be assumed, damage may occur and reliability may be affected.

2. The maximum ratings applied are individual stress limit values and not valid simultaneously.

3. JEDEC standard multilayer board –2S2P (2 signal 2 power)

**Table 5. DC CHARACTERISTICS** V<sub>DD</sub> = 3.3 V ± 0.3 V, GND = 0 V, T<sub>A</sub> –40°C to +125°C (Note 4)

Symbol	Parameter	Test Conditions	Min	Typ	Max	Unit
I <sub>DD</sub>	No Load Supply Current	Pin: V <sub>DD</sub> ; Inputs Open		5.4	9	mA
V <sub>OH</sub>	Output High Voltage	Pin: Q; I <sub>OH</sub> = -0.4 mA, Inputs shorted or terminated, V <sub>ID</sub> = +200 mV	2.4	3.1		V
V <sub>OL</sub>	Output Low Voltage	Pin: Q; I <sub>OL</sub> = 2 mA, V <sub>ID</sub> = -200 mV		0.3	0.5	V
I <sub>OS</sub>	Output Short Circuit Current	Pin: Q; V <sub>Q</sub> = 0 V	-15	-50	-100	mA
V <sub>CL</sub>	Input Clamp Voltage	I <sub>CL</sub> = -18 mA	-1.5	-0.7		V

Product parametric performance is indicated in the Electrical Characteristics for the listed test conditions, unless otherwise noted. Product performance may not be indicated by the Electrical Characteristics if operated under different conditions.

4. – minus sign indicated only direction. Current into the device is defined as positive. I<sub>OS</sub> is specified as magnitude only.

**Table 6. ELECTRICAL CHARACTERISTICS** V<sub>DD</sub> = 3.3 V ± 0.3 V, GND = 0 V, T<sub>A</sub> –40°C to +125°C, Pin: IN/ $\overline{IN}$  (Note 5)

Symbol	Parameter	Test Conditions	Min	Typ	Max	Unit
V <sub>TH</sub>	Differential Input High Threshold	V <sub>CM</sub> dependent on V <sub>DD</sub>		+30	+100	mV
V <sub>TL</sub>	Differential Input Low Threshold		-100	-30		mV
V <sub>CM</sub>	Offset Voltage		0.1		2.35	V
I <sub>IN</sub>	Input Current	V <sub>IN</sub> = +2.8 V      V <sub>DD</sub> = 0 V or 3.6 V	-10	±1	+10	μA
		V <sub>IN</sub> = 0 V	-10	±1	+10	μA
		V <sub>IN</sub> = +3.6 V      V <sub>DD</sub> = 0 V	-20		+20	μA
I <sub>IND</sub>	Differential Input Current	V <sub>IN</sub> = +0.4 V, V $\overline{IN}$ = +0 V	3.0	3.9	4.4	mA
		V <sub>IN</sub> = +2.4 V, V $\overline{IN}$ = +2.0 V				
R <sub>T</sub>	Integrated Termination Resistor			100		Ω
C <sub>IN</sub>	Input Capacitance	IN = $\overline{IN}$ = GND		3		pF

5. – minus sign indicated only direction. Current into the device is defined as positive.

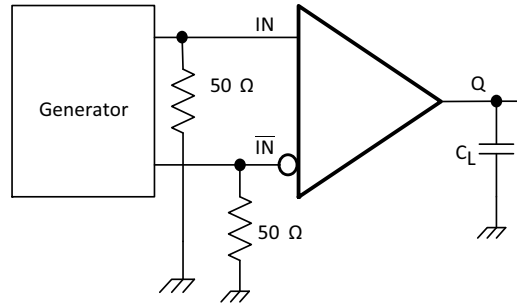
**Table 7. SWITCHING CHARACTERISTICS**

$V_{DD} = 3.3 \text{ V} \pm 0.3 \text{ V}$ ,  $GND = 0 \text{ V}$ ,  $T_A = -40^\circ\text{C}$  to  $+125^\circ\text{C}$ ,  $F = 1 \text{ MHz}$ ,  $Z_O = 50 \Omega$ ,  $t_r, t_f \leq 3 \text{ ns}$  (0% to 100%) – (Note 6)

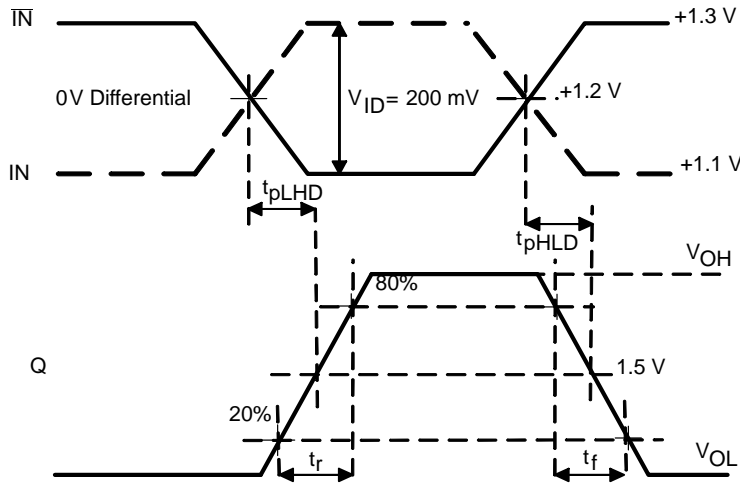
Symbol	Parameters	Min	Typ	Max	Unit
$t_{pHL D}$	High to Low Differential Propagation Delay	1.0	1.8	3.5	ns
$t_{pLH D}$	Low to High Differential Propagation Delay	1.0	1.7	3.5	ns
$t_r$	Rise Time – Transition Low to High		350	800	ps
$t_f$	Fall Time – Transition High to Low		175	800	ps
$t_{SKD(P)}$	Differential Pulse Skew $ t_{pHL D} - t_{pLH D} $ (Note 7)	0	100	400	ps
$t_{SKD(PP)1}$	Part to Part Skew – (Note 8)	0	0.3	1.0	ns
$t_{SKD(PP)2}$	Part to Part Skew – (Note 9)	0	0.4	2.5	ns
$f_{MAX}$	Maximum Operating Frequency – (Note 10)		250		MHz

6. Test Conditions for the above –  $V_{ID} = 200 \text{ mV}$ ,  $C_L = 15 \text{ pF}$  (includes Load & Jig Capacitance), Figures 1 and 2
7.  $|t_{pHL D} - t_{pLH D}|$ , is the magnitude difference in differential propagation delay time between the positive going edge and the negative going edge of the same channel.
8. Differential Part to Part Skew, is defined as the difference between the minimum and maximum specified differential propagation delays. This specification applies to devices at the same  $V_{DD}$  and within  $5^\circ\text{C}$  of each other within the operating temperature range.
9. Part to part skew, is the differential channel to channel skew of any event between devices. This specification applies to devices over recommended operating temperature and voltage ranges, and across process distribution.  $t_{SKD2}$  is defined as  $|Max - Min|$  differential propagation delay.
10.  $f_{MAX}$  Input Conditions:  $t_r = t_f < 1 \text{ ns}$  (0% to 100%), Duty Cycle 50%, differential (1.05 V to 1.35 V Peak to Peak).  $f_{MAX}$  Output Conditions:  $V_{OL}$  (Max 0.4 V),  $V_{OH}$  (min 2.4 V), Load = 15 pF (stray + probe), Duty Cycle 60%/40%

**PARAMETER MEASUREMENT:**



**Figure 1. Receiver Propagation Delay & Transition Time Test Circuit**

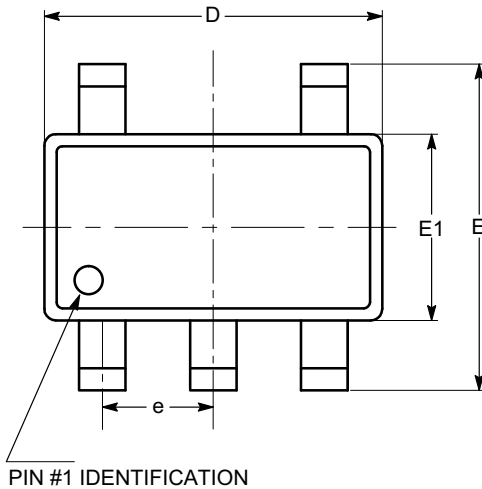


**Figure 2. Receiver Propagation Delay & Transition Time Waveforms**

# NBA3N012C

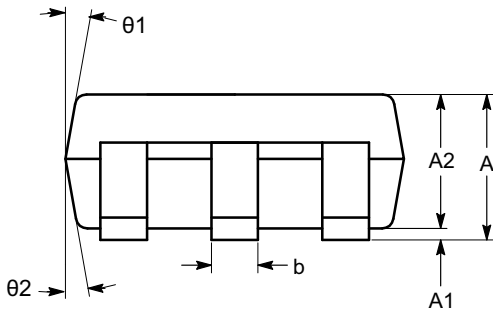
## PACKAGE DIMENSIONS

SOT-23, 5 Lead  
CASE 527AH  
ISSUE O

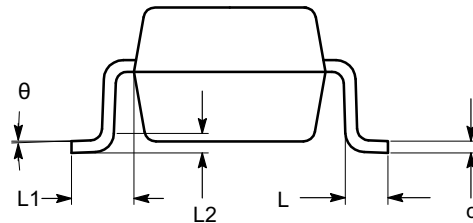


TOP VIEW

SYMBOL	MIN	NOM	MAX
A	0.90		1.45
A1	0.00		0.15
A2	0.90	1.15	1.30
b	0.30		0.50
c	0.08		0.22
D	2.90 BSC		
E	2.80 BSC		
E1	1.60 BSC		
e	0.95 BSC		
L	0.30	0.45	0.60
L1	0.60 REF		
L2	0.25 REF		
$\theta$	0°	4°	8°
$\theta 1$	5°	10°	15°
$\theta 2$	5°	10°	15°



SIDE VIEW



END VIEW

**Notes:**

- (1) All dimensions in millimeters. Angles in degrees.
- (2) Complies with JEDEC standard MO-178.

ON Semiconductor and are trademarks of Semiconductor Components Industries, LLC dba ON Semiconductor or its subsidiaries in the United States and/or other countries. ON Semiconductor owns the rights to a number of patents, trademarks, copyrights, trade secrets, and other intellectual property. A listing of ON Semiconductor's product/patent coverage may be accessed at [www.onsemi.com/site/pdf/Patent-Marking.pdf](http://www.onsemi.com/site/pdf/Patent-Marking.pdf). ON Semiconductor reserves the right to make changes without further notice to any products herein. ON Semiconductor makes no warranty, representation or guarantee regarding the suitability of its products for any particular purpose, nor does ON Semiconductor assume any liability arising out of the application or use of any product or circuit, and specifically disclaims any and all liability, including without limitation special, consequential or incidental damages. Buyer is responsible for its products and applications using ON Semiconductor products, including compliance with all laws, regulations and safety requirements or standards, regardless of any support or applications information provided by ON Semiconductor. "Typical" parameters which may be provided in ON Semiconductor data sheets and/or specifications can and do vary in different applications and actual performance may vary over time. All operating parameters, including "Typicals" must be validated for each customer application by customer's technical experts. ON Semiconductor does not convey any license under its patent rights nor the rights of others. ON Semiconductor products are not designed, intended, or authorized for use as a critical component in life support systems or any FDA Class 3 medical devices or medical devices with a same or similar classification in a foreign jurisdiction or any devices intended for implantation in the human body. Should Buyer purchase or use ON Semiconductor products for any such unintended or unauthorized application, Buyer shall indemnify and hold ON Semiconductor and its officers, employees, subsidiaries, affiliates, and distributors harmless against all claims, costs, damages, and expenses, and reasonable attorney fees arising out of, directly or indirectly, any claim of personal injury or death associated with such unintended or unauthorized use, even if such claim alleges that ON Semiconductor was negligent regarding the design or manufacture of the part. ON Semiconductor is an Equal Opportunity/Affirmative Action Employer. This literature is subject to all applicable copyright laws and is not for resale in any manner.

**PUBLICATION ORDERING INFORMATION**

**LITERATURE FULFILLMENT:**  
Literature Distribution Center for ON Semiconductor  
19521 E. 32nd Pkwy, Aurora, Colorado 80011 USA  
**Phone:** 303-675-2175 or 800-344-3860 Toll Free USA/Canada  
**Fax:** 303-675-2176 or 800-344-3867 Toll Free USA/Canada  
**Email:** [orderlit@onsemi.com](mailto:orderlit@onsemi.com)

**N. American Technical Support:** 800-282-9855 Toll Free  
USA/Canada  
**Europe, Middle East and Africa Technical Support:**  
Phone: 421 33 790 2910  
**Japan Customer Focus Center**  
Phone: 81-3-5817-1050

**ON Semiconductor Website:** [www.onsemi.com](http://www.onsemi.com)  
**Order Literature:** <http://www.onsemi.com/orderlit>  
For additional information, please contact your local Sales Representative

Компания «Океан Электроники» предлагает заключение долгосрочных отношений при поставках импортных электронных компонентов на взаимовыгодных условиях!

Наши преимущества:

- Поставка оригинальных импортных электронных компонентов напрямую с производств Америки, Европы и Азии, а так же с крупнейших складов мира;
- Широкая линейка поставок активных и пассивных импортных электронных компонентов (более 30 млн. наименований);
- Поставка сложных, дефицитных, либо снятых с производства позиций;
- Оперативные сроки поставки под заказ (от 5 рабочих дней);
- Экспресс доставка в любую точку России;
- Помощь Конструкторского Отдела и консультации квалифицированных инженеров;
- Техническая поддержка проекта, помощь в подборе аналогов, поставка прототипов;
- Поставка электронных компонентов под контролем ВП;
- Система менеджмента качества сертифицирована по Международному стандарту ISO 9001;
- При необходимости вся продукция военного и аэрокосмического назначения проходит испытания и сертификацию в лаборатории (по согласованию с заказчиком);
- Поставка специализированных компонентов военного и аэрокосмического уровня качества (Xilinx, Altera, Analog Devices, Intersil, Interpoint, Microsemi, Actel, Aeroflex, Peregrine, VPT, Syfer, Eurofarad, Texas Instruments, MS Kennedy, Miteq, Cobham, E2V, MA-COM, Hittite, Mini-Circuits, General Dynamics и др.);

Компания «Океан Электроники» является официальным дистрибьютором и эксклюзивным представителем в России одного из крупнейших производителей разъемов военного и аэрокосмического назначения «JONHON», а так же официальным дистрибьютором и эксклюзивным представителем в России производителя высокотехнологичных и надежных решений для передачи СВЧ сигналов «FORSTAR».



## JONHON

«JONHON» (основан в 1970 г.)

Разъемы специального, военного и аэрокосмического назначения:

(Применяются в военной, авиационной, аэрокосмической, морской, железнодорожной, горно- и нефтедобывающей отраслях промышленности)

«FORSTAR» (основан в 1998 г.)

ВЧ соединители, коаксиальные кабели,  
кабельные сборки и микроволновые компоненты:

(Применяются в телекоммуникациях гражданского и специального назначения, в средствах связи, РЛС, а так же военной, авиационной и аэрокосмической отраслях промышленности).



Телефон: 8 (812) 309-75-97 (многоканальный)

Факс: 8 (812) 320-03-32

Электронная почта: [ocean@oceanchips.ru](mailto:ocean@oceanchips.ru)

Web: <http://oceanchips.ru/>

Адрес: 198099, г. Санкт-Петербург, ул. Калинина, д. 2, корп. 4, лит. А