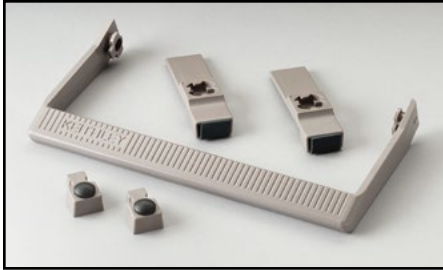


# Bench Kits, Rack Mount Kits



**Model 2000-Benchkit:** Benchtop Restore Kit. Rubber feet and carrying handles are removed during rack mounting. These items can be used with any of the following models to convert it back to a benchtop instrument.

**For use with: Series 2000, 2182A, Series 2300, Series 2400, Series 2500, Series 2600B, 2700, 2701, 6220, 6221, 6430, 6482, 6485, 6487, 6514, 6517A, 6517B, 7001**



**Model 248-RMK-\* Fixed Rack Mount Kit:** Enables rack mounting of Model 248. **248-RMK-1** rack mounts one Model 248. **248-RMK-2** (not pictured) rack mounts two Model 248s side by side.

**For use with: 248**



**Model 4200-KEY-RM:** Rack mount kit for cabinet mounting of standard keyboard and pointing devices.

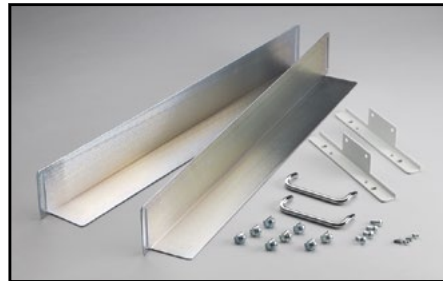
**For use with: 4200-SCS**

## SELECTOR GUIDE: RACK MOUNT KITS

| Instrument                   | Single Fixed     | Single Slide <sup>1</sup> | Dual Fixed          | Type of Mount     |
|------------------------------|------------------|---------------------------|---------------------|-------------------|
| Series 2000 2700 6487        |                  |                           | 4288-2 <sup>2</sup> | Side              |
| 2182A 2701 6514              |                  |                           | 4288-4 <sup>3</sup> | Shelf             |
| Series 2300 6220             | 4288-1           |                           | 4288-5 <sup>4</sup> | Shelf             |
| Series 2200 6221 6517B       |                  |                           | 4288-9 <sup>4</sup> | Shelf             |
| Series 2500 6485 7001        |                  |                           | 4299-7              | Side              |
| Series 2100 Series 2400 6430 | 4299-3           |                           | 4299-4              | Side              |
| Series 2600B                 | 4299-1<br>4299-6 |                           | 4299-2              | Side              |
| 2750, System 46, System 46T  | 4288-7           |                           |                     | Rear bracket      |
| Series 3700A                 | 4288-10          |                           |                     | Rear bracket      |
| 248                          | 248-RMK-1        |                           | 248-RMK-2           | Side              |
| 707B                         | Included         | 7079                      |                     | Side              |
| 708B                         | Included         |                           |                     | Side              |
| 4200-SCS/C or /F             | 4200-RM          |                           |                     |                   |
| 7002                         | 7002-RMK-1       | 7002-RMK-2                |                     | Bracket w/handles |

### NOTES

- Slide rack mount kits are not compatible with equipment cabinet Models 8000-10, 8000-14, and 8000-17.
- Model 4288-2 mounts any two of the listed models, except 776.
- Model 4288-4 mounts: ANY ONE plus ANY ONE  
230, 230-1 428-PROG, Series 2000, 2182A, Series 2300, Series 2400, Series 2500, 2700, 2701, 6220, 6221, 6430, 6485, 6487, 6514, 6517A, 6517B, 7001
- Models 4288-5 and 4288-9 mount any one or two of the listed models on a shelf-type mount.



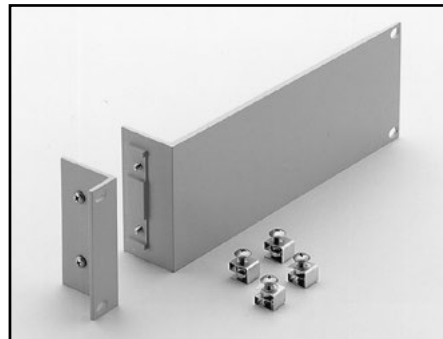
**Model 4200-RM:** Fixed rack mount kit for cabinet mounting of the 4200-SCS.

**For use with: 4200-SCS**



**Model 4288-2 Fixed Rack Mount Kit:** Height: 88mm (3 1/2 in).

**For use with: See Selector Guide.**



**Model 4288-1 Fixed Rack Mount Kit:** Single-unit rack mount kit. Height: 88mm (3 1/2 in).

**For use with: See Selector Guide.**

1.888.KEITHLEY (U.S. only)

[www.keithley.com](http://www.keithley.com)

A Greater Measure of Confidence

**KEITHLEY**

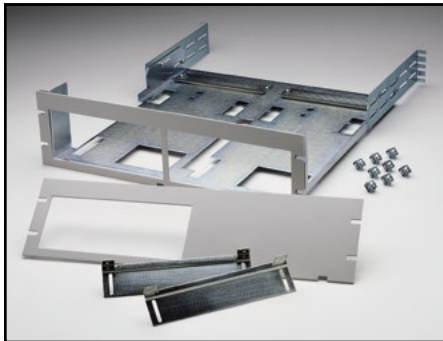
A Tektronix Company

# Rack Mount Kits



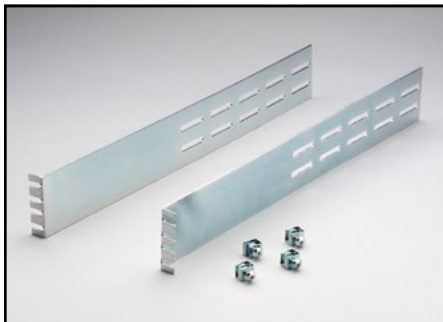
**Model 4288-4 Fixed Rack Mount Kit:** Enables rack mounting of one Model 230 next to one 428-PROG, 776, Series 2000, 2182A, Series 2300, Series 2400, Series 2600B, 2700, 2701, 6220, 6221, 6514, 6485, 6487, 6517A, 6517B, or 7001.

**For use with:** See Selector Guide.



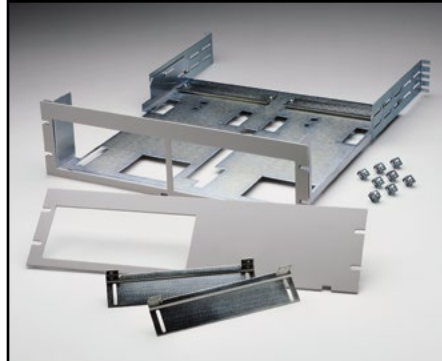
**Model 4288-5 Fixed Rack Mount Kit:** The single- and dual-instrument front panels included enable rack mounting of either one or two 3½-inch instruments. Height: 132mm (5¼ in). Depth: 457mm (18 in).

**For use with:** See Selector Guide.



**Model 4288-7 Rear Support Mount Kit:** For rack mount applications where more than one or two card modules are installed to provide added support for the rear of the mainframe. Note that front rack mounting hardware is supplied with the Model 2750 mainframe. 88mm (3.5 in) height.

**For use with:** 2750, System 46, System 46T



**Model 4288-9 Fixed Rack Mount Kit:** Shelf style rack mount kit with single- and dual-instrument front plates provided. Also included are extended rear support brackets and hardware for installation.

**For use with:** Series 2200 Power Supplies



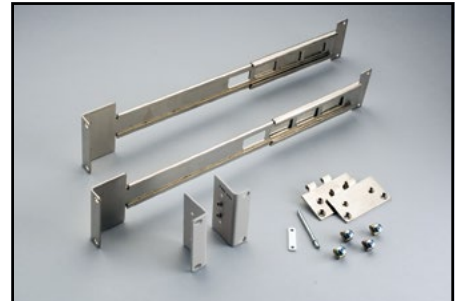
**Model 4288-10 Rear Support Mount Kit:** For rack mount applications where more than one or two card modules are installed to provide added support for the rear of the mainframe. Note that front rack mounting hardware is supplied with Series 3700A mainframes. 88mm (3.5 in) height.

**For use with:** Series 3700A



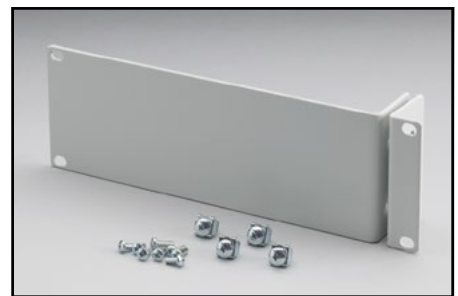
**Model 4299-1:** Heavy duty, single rack mount kit with front and rear support. Height: 88mm (3.5 in).

**For use with:** Series 2600B



**Model 4299-2:** Heavy duty, dual rack mount kit with front and rear support. Height: 88mm (3.5 in).

**For use with:** Series 2600B



**Model 4299-3 Universal Single Unit Rack Mount Kit:** Includes all required hardware to rack mount a single Keithley or Agilent half rack instrument using front panel only mounting into a standard 19 inch equipment rack. Not compatible with Series 2600B. 88mm (3.5 in) height.

**For use with:** Half rack instruments (excluding Series 2600B)

1.888.KEITHLEY (U.S. only)

[www.keithley.com](http://www.keithley.com)

# Rack Mount Kits



**Model 4299-4 Universal Dual Unit Rack Mount Kit:** Includes all required hardware to rack mount two Keithley and/or Agilent half-rack instruments together using front panel only mounting into a standard 19-inch equipment rack. Not compatible with Series 2600B. 88mm (3.5 in) height.

**For use with: Half-rack instruments (excluding Series 2600B)**



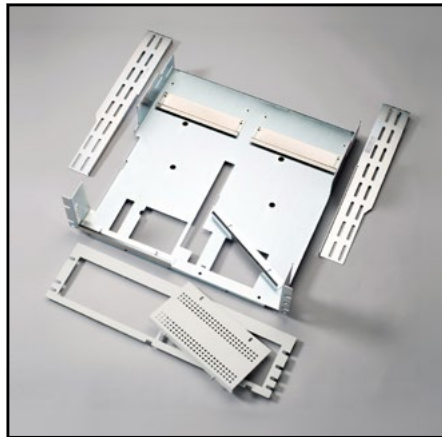
**Model 4299-5:** 1U vent panel.

**For use with: Series 2600B**



**Model 4299-6 Single Fixed Rack Kit:** Includes all required hardware to rack-mount a Keithley full-rack instrument in a standard 19-inch equipment rack.

**For use with: 2651A, 2657A**



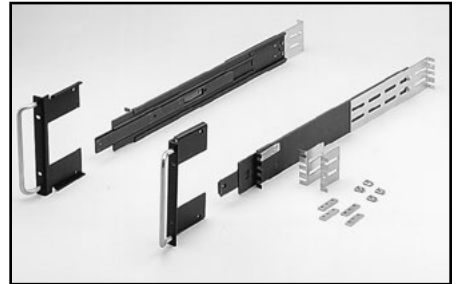
**Model 4299-7 Dual Fixed Rack Mount Kit:** Enables rack-mounting of Series 2200 power supplies with other instruments.

**For use with: Series 2200**



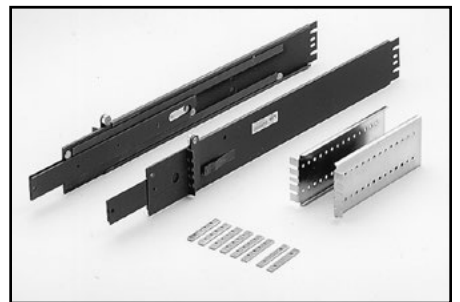
**Model 7002-RMK-1 Fixed Rack Mount Kit:** Two 7 in. flanged brackets and hardware for mounting the Model 7002 in a standard 48.3cm (19 in) equipment cabinet. Can be used with Models 8000, 8000-10, 8000-14, or 8000-17.

**For use with: 7002**



**Model 7002-RMK-2 Slide Rack Mount Kit:** Two sets of flanged brackets, slides, and hardware to mount Model 7002 in standard 48.3cm (19 in) equipment cabinet. Can be used with Model 8000.

**For use with: 7002**



**Model 7079 Slide Rack Mount Kit:** Two sets of flanged brackets, slides, and hardware to mount Model 707A in standard 48.3cm (19 in) equipment cabinet. Can be used with Model 8000.

**For use with: 707B**

1.888.KEITHLEY (U.S. only)

[www.keithley.com](http://www.keithley.com)

A Greater Measure of Confidence

**KEITHLEY**

A Tektronix Company

Компания «Океан Электроники» предлагает заключение долгосрочных отношений при поставках импортных электронных компонентов на взаимовыгодных условиях!

Наши преимущества:

- Поставка оригинальных импортных электронных компонентов напрямую с производств Америки, Европы и Азии, а так же с крупнейших складов мира;
- Широкая линейка поставок активных и пассивных импортных электронных компонентов (более 30 млн. наименований);
- Поставка сложных, дефицитных, либо снятых с производства позиций;
- Оперативные сроки поставки под заказ (от 5 рабочих дней);
- Экспресс доставка в любую точку России;
- Помощь Конструкторского Отдела и консультации квалифицированных инженеров;
- Техническая поддержка проекта, помощь в подборе аналогов, поставка прототипов;
- Поставка электронных компонентов под контролем ВП;
- Система менеджмента качества сертифицирована по Международному стандарту ISO 9001;
- При необходимости вся продукция военного и аэрокосмического назначения проходит испытания и сертификацию в лаборатории (по согласованию с заказчиком);
- Поставка специализированных компонентов военного и аэрокосмического уровня качества (Xilinx, Altera, Analog Devices, Intersil, Interpoint, Microsemi, Actel, Aeroflex, Peregrine, VPT, Syfer, Eurofarad, Texas Instruments, MS Kennedy, Miteq, Cobham, E2V, MA-COM, Hittite, Mini-Circuits, General Dynamics и др.);

Компания «Океан Электроники» является официальным дистрибьютором и эксклюзивным представителем в России одного из крупнейших производителей разъемов военного и аэрокосмического назначения «JONHON», а так же официальным дистрибьютором и эксклюзивным представителем в России производителя высокотехнологичных и надежных решений для передачи СВЧ сигналов «FORSTAR».



## JONHON

«JONHON» (основан в 1970 г.)

Разъемы специального, военного и аэрокосмического назначения:

(Применяются в военной, авиационной, аэрокосмической, морской, железнодорожной, горно- и нефтедобывающей отраслях промышленности)

«FORSTAR» (основан в 1998 г.)

ВЧ соединители, коаксиальные кабели, кабельные сборки и микроволновые компоненты:

(Применяются в телекоммуникациях гражданского и специального назначения, в средствах связи, РЛС, а так же военной, авиационной и аэрокосмической отраслях промышленности).



Телефон: 8 (812) 309-75-97 (многоканальный)

Факс: 8 (812) 320-03-32

Электронная почта: [ocean@oceanchips.ru](mailto:ocean@oceanchips.ru)

Web: <http://oceanchips.ru/>

Адрес: 198099, г. Санкт-Петербург, ул. Калинина, д. 2, корп. 4, лит. А