

## Aluminum Capacitors Power Standard Miniature Snap-In

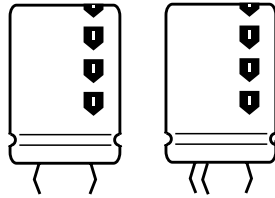
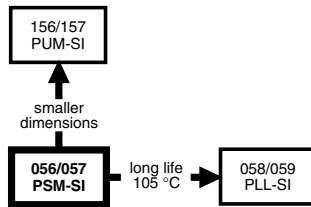


Fig. 1 Component outlines



### FEATURES

- Polarized aluminum electrolytic capacitors, non-solid electrolyte
- Large types, minimized dimensions, cylindrical aluminum case, insulated with a blue sleeve
- Pressure relief on the top of the aluminum case
- Charge and discharge proof
- Long useful life: 12 000 hours at 85 °C
- High ripple current capability
- Keyed polarity version available


**RoHS  
COMPLIANT**

### APPLICATIONS

- General purpose, industrial and audio/video systems
- Smoothing and filtering
- Standard and switched mode power supplies
- Energy storage in pulse systems

### MARKING

The capacitors are marked (where possible) with the following information:

- Rated capacitance (in  $\mu\text{F}$ )
- Tolerance code on rated capacitance, code letter in accordance with IEC 60062 (M for  $\pm 20\%$ )
- Rated voltage (in V)
- Date code (YYMM)
- Name of manufacturer
- Code for factory of origin
- ‘-’ sign to identify the negative terminal, visible from the top and side of the capacitor
- Code number
- Climatic category in accordance with IEC 60068

| QUICK REFERENCE DATA                              |  |                             |
|---|--|-----------------------------|
| DESCRIPTION                                       | VALUE                                  |                             |
|   | 056                                    | 057                         |
| Nominal case size<br>( $\varnothing$ D x L in mm) | 22 x 25 to 35 x 50                     |                             |
| Rated capacitance range<br>(E6 series), $C_R$     | 470 to<br>68 000 $\mu\text{F}$         | 47 to<br>1500 $\mu\text{F}$ |
| Tolerance on $C_R$                                | $\pm 20\%$                             |                             |
| Rated voltage range, $U_R$ <sup>(1)</sup>         | 10 to 100 V                            | 200 to 450 V                |
| Category temperature range                        | - 40 to + 85 °C                        | - 25 to + 85 °C             |
| Endurance test at 85 °C                           | 5000 hours (450 V: 2000 hours)         |                             |
| Useful life at 85 °C                              | 12 000 hours<br>(450 V: 5000 hours)    |                             |
| Useful life at 40 °C and<br>1.4 x $I_R$ applied   | 210 000 hours<br>(450 V: 90 000 hours) |                             |
| Shelf life at 0 V, 85 °C                          | 500 hours                              |                             |
| Based on sectional<br>specification               | IEC 60384-4/EN130300                   |                             |
| Climatic category IEC 60068                       | 40/085/056                             | 25/085/56                   |

**Note**

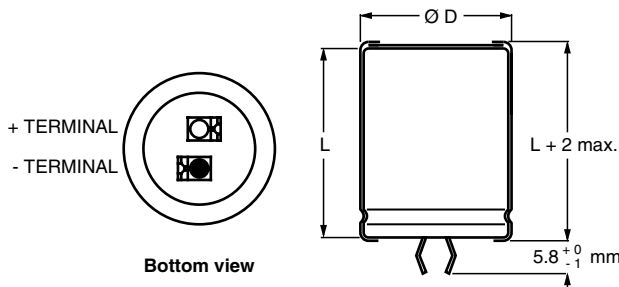
<sup>(1)</sup> A 420 V range is available on request

| SELECTION CHART FOR $C_R$ , $U_R$ AND RELEVANT NOMINAL CASE SIZES FOR 056 SERIES ( $\varnothing$ D x L in mm) |           |    |         |         |         |         |         |
|---|-----------|----|---------|---------|---------|---------|---------|
| $C_R$<br>( $\mu\text{F}$ )  | $U_R$ (V) |    |         |         |         |         |         |
|   | 10        | 16 | 25      | 40      | 50      | 63      | 100     |
| 470   | -         | -  | -       | -       | -       | -       | 22 x 25 |
| 680   | -         | -  | -       | -       | -       | -       | 22 x 30 |
| 1000  | -         | -  | -       | -       | -       | 22 x 25 | 25 x 30 |
|   | -         | -  | -       | -       | -       | -       | 22 x 40 |
| 1500  | -         | -  | -       | -       | 22 x 25 | 22 x 30 | 30 x 30 |
|   | -         | -  | -       | -       | -       | -       | 25 x 40 |
| 2200  | -         | -  | -       | 22 x 25 | 22 x 30 | 25 x 30 | 30 x 40 |
|   | -         | -  | -       | -       | -       | 22 x 40 | 25 x 50 |
| 3300  | -         | -  | 22 x 25 | 22 x 30 | 25 x 30 | 30 x 30 | 35 x 40 |
|   | -         | -  | -       | -       | 22 x 40 | 25 x 40 | 30 x 50 |



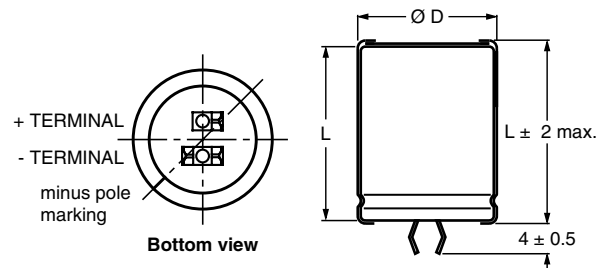
| <b>SELECTION CHART FOR C<sub>R</sub>, U<sub>R</sub> AND RELEVANT NOMINAL CASE SIZES FOR 056 SERIES (∅ D x L in mm)</b> |                    |         |         |         |         |         |         |
|--|--------------------|---------|---------|---------|---------|---------|---------|
| C <sub>R</sub><br>(μF)   | U <sub>R</sub> (V) |         |         |         |         |         |         |
|  | 10                 | 16      | 25      | 40      | 50      | 63      | 100     |
| 4700   | -                  | 22 x 25 | 22 x 30 | 25 x 30 | 30 x 30 | 30 x 40 | 35 x 50 |
|  | -                  | -       | -       | 22 x 40 | 25 x 40 | 25 x 50 | -       |
| 6800   | 22 x 25            | 22 x 30 | 25 x 30 | 30 x 30 | 30 x 40 | 35 x 40 | -       |
|  | -                  | -       | 22 x 40 | 25 x 40 | 25 x 50 | 30 x 50 | -       |
| 10 000   | 22 x 30            | 25 x 30 | 30 x 30 | 30 x 40 | 35 x 40 | 35 x 50 | -       |
|  | -                  | 22 x 40 | 25 x 40 | 25 x 50 | 30 x 50 | -       | -       |
| 15 000   | 25 x 30            | 30 x 30 | 30 x 40 | 35 x 40 | 35 x 50 | -       | -       |
|  | 22 x 40            | 25 x 40 | 25 x 50 | 30 x 50 | -       | -       | -       |
| 22 000   | 30 x 30            | 30 x 40 | 35 x 40 | 35 x 50 | -       | -       | -       |
|  | 25 x 40            | 25 x 50 | 30 x 50 | -       | -       | -       | -       |
| 33 000   | 30 x 40            | 35 x 40 | 35 x 50 | -       | -       | -       | -       |
|  | 25 x 50            | 30 x 50 | -       | -       | -       | -       | -       |
| 47 000   | 35 x 40            | 35 x 50 | -       | -       | -       | -       | -       |
|  | 30 x 50            | -       | -       | -       | -       | -       | -       |
| 68 000   | 35 x 50            | -       | -       | -       | -       | -       | -       |

| <b>SELECTION CHART FOR C<sub>R</sub>, U<sub>R</sub> AND RELEVANT NOMINAL CASE SIZES FOR 057 SERIES (∅ D x L in mm)</b> |                    |         |         |         |         |
|--|--------------------|---------|---------|---------|---------|
| C <sub>R</sub><br>(μF)   | U <sub>R</sub> (V) |         |         |         |         |
|  | 200                | 250     | 385     | 400     | 450     |
| 47   | -                  | -       | 22 x 25 | 22 x 25 | 22 x 30 |
| 68   | -                  | -       | 22 x 30 | 22 x 30 | 22 x 30 |
| 100  | -                  | 22 x 25 | 25 x 30 | 25 x 30 | 30 x 30 |
|  | -                  | -       | 22 x 40 | 22 x 35 | 25 x 35 |
|  | -                  | -       | 22 x 35 | -       | -       |
| 150  | 22 x 25            | 22 x 30 | 30 x 30 | 30 x 30 | 25 x 50 |
|  | -                  | -       | 25 x 40 | -       | 30 x 35 |
|  | -                  | -       | -       | 25 x 40 | -       |
| 220  | 22 x 30            | 25 x 30 | 30 x 45 | 30 x 35 | 35 x 40 |
|  | -                  | 22 x 40 | 30 x 40 | 25 x 40 | 30 x 45 |
|  | -                  | -       | 30 x 35 | -       | -       |
|  | -                  | -       | 25 x 50 | -       | -       |
| 330  | 25 x 30            | 30 x 30 | 35 x 35 | 35 x 40 | 35 x 50 |
|  | 22 x 40            | 25 x 40 | -       | 35 x 50 | 35 x 45 |
| 470  | 30 x 30            | 30 x 40 | 35 x 50 | 35 x 50 | -       |
|  | 25 x 40            | 25 x 50 | 35 x 45 | -       | -       |
| 680  | 30 x 40            | 35 x 40 | -       | -       | -       |
|  | 25 x 50            | 30 x 50 | -       | -       | -       |
| 1000   | 35 x 40            | 35 x 50 | -       | -       | -       |
|  | 30 x 50            | -       | -       | -       | -       |
| 1500   | 35 x 50            | -       | -       | -       | -       |

**DIMENSIONS in millimeters AND AVAILABLE FORMS**
**TWO TERMINALS SNAP-IN**


The minus terminal can be marked with a black dot or with an imprinted '-' sign.

Fig.2 Two terminal snap-in

**THREE TERMINAL SNAP-IN**


The negative terminal has **TWO** pins which are **BOTH** electrically connected.

Fig.4 Three terminal snap-in

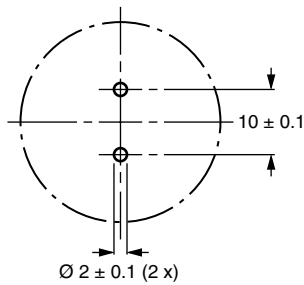
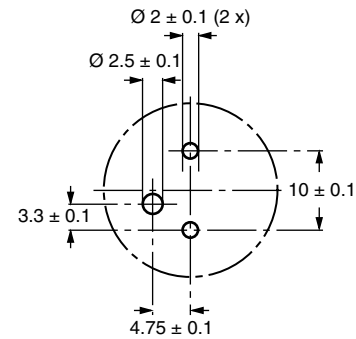


Fig.3 Mounting hole diagram



The 10 mm spacing of the 2 pin snap-in is used as the base layout and a third hole is added.

The third hole is closer to the negative primary hole so that polarization is always maintained, together with added mechanical stability.

Fig.5 Mounting hole diagram

Table 1

| <b>DIMENSIONS in millimeters, MASS AND PACKAGING QUANTITIES</b> |                               |                   |          |                                      |  |
|---|-------------------------------|-------------------|----------|--------------------------------------|--|
| NOMINAL CASE SIZE<br>$\varnothing D \times L$                   | $\varnothing D_{\text{max.}}$ | $L_{\text{max.}}$ | MASS (g) | PACKAGING QUANTITIES (units per box) | CARDBOARD BOX DIMENSIONS<br>$L \times W \times H$ (mm) |
| 22 x 25   | 23                            | 27                | ≈ 12     | 100                                  | 260 x 250 x 39   |
| 22 x 30   | 23                            | 32                | ≈ 16     | 100                                  | 260 x 250 x 44   |
| 22 x 35   | 23                            | 37                | ≈ 20     | 100                                  | 260 x 250 x 49   |
| 22 x 40   | 23                            | 42                | ≈ 23     | 100                                  | 260 x 250 x 54   |
| 25 x 30   | 26                            | 32                | ≈ 22     | 100                                  | 290 x 280 x 44   |
| 25 x 35   | 26                            | 37                | ≈ 24     | 100                                  | 290 x 280 x 49   |
| 25 x 40   | 26                            | 42                | ≈ 27     | 100                                  | 290 x 280 x 54   |
| 25 x 50   | 26                            | 52                | ≈ 38     | 100                                  | 290 x 280 x 64   |
| 30 x 30   | 31                            | 32                | ≈ 30     | 100                                  | 340 x 330 x 44   |
| 30 x 35   | 31                            | 37                | ≈ 35     | 100                                  | 340 x 330 x 49   |
| 30 x 40   | 31                            | 42                | ≈ 40     | 100                                  | 340 x 330 x 54   |
| 30 x 45   | 31                            | 47                | ≈ 45     | 100                                  | 340 x 330 x 59   |
| 30 x 50   | 31                            | 52                | ≈ 50     | 100                                  | 340 x 330 x 64   |
| 35 x 35   | 36                            | 37                | ≈ 48     | 50                                   | 390 x 198 x 49   |
| 35 x 40   | 36                            | 42                | ≈ 55     | 50                                   | 390 x 198 x 54   |
| 35 x 45   | 36                            | 47                | ≈ 63     | 50                                   | 390 x 198 x 59   |
| 35 x 50   | 36                            | 52                | ≈ 72     | 50                                   | 390 x 198 x 64   |

| ELECTRICAL DATA |  |
|-----------------|--|
| SYMBOL          | DESCRIPTION  |
| $C_R$           | rated capacitance at 100 Hz                                      |
| $I_R$           | rated RMS ripple current at 100 Hz<br>or $\geq 10$ kHz and 85 °C |
| $I_{L1}$        | max. leakage current after 1 minute at $U_R$                     |
| $I_{L5}$        | max. leakage current after 5 minutes at $U_R$                    |
| ESR             | max. equivalent series resistance at 100 Hz                      |
| Z               | max. impedance at 10 kHz   |

**Note**

- Unless otherwise specified, all electrical values in Tables 2 and 3 apply at  $T_{amb} = 20$  °C,  $P = 86$  to 106 kPa,  $RH = 45$  to 75 %

**ORDERING EXAMPLE**

Electrolytic capacitor 056 series

10 000  $\mu$ F/25 V;  $\pm 20$  %Nominal case size:  $\varnothing 25 \times 40$  mm

2-terminal snap-in

Ordering code: MAL205646103E3

Former 12NC: 222205646103

3-terminal snap-in

Ordering code: MAL205626103E3

Former 12NC: 222205626103

Table 2

| ELECTRICAL DATA AND ORDERING INFORMATION FOR 056 SERIES |                               |  |                                 |  |                                 |                                 |                                |                              |                               |         |
|---|-------------------------------|--|---------------------------------|--|---------------------------------|---------------------------------|--------------------------------|------------------------------|-------------------------------|---------|
| $U_R$<br>(V)  | $C_R$<br>100 Hz<br>( $\mu$ F) | NOMINAL<br>CASE SIZE<br>$\varnothing D \times L$<br>(mm) | $I_R$<br>100 Hz<br>85 °C<br>(A) | $I_R$<br>$\geq 10$ kHz<br>85 °C<br>(A) | $I_{L1}$<br>1 min<br>( $\mu$ A) | $I_{L5}$<br>5 min<br>( $\mu$ A) | ESR<br>100 Hz<br>(m $\Omega$ ) | Z<br>10 kHz<br>(m $\Omega$ ) | ORDERING CODE<br>MAL2056..... |         |
|   |                               |  |                                 |  |                                 |                                 |                                |                              | 2-TERM.                       | 3-TERM. |
| 10  | 6800                          | 22 x 25  | 2.04                            | 2.40                                   | 412                             | 140                             | 76                             | 62                           | 54682E3                       | 74682E3 |
|   | 10 000                        | 22 x 30  | 2.56                            | 3.02                                   | 608                             | 205                             | 56                             | 45                           | 54103E3                       | 74103E3 |
|   | 15 000                        | 25 x 30  | 3.12                            | 3.68                                   | 904                             | 304                             | 44                             | 39                           | 54153E3                       | 74153E3 |
|   | 15 000                        | 22 x 40  | 3.39                            | 4.00                                   | 904                             | 304                             | 41                             | 34                           | 44153E3                       | 24153E3 |
|   | 22 000                        | 30 x 30  | 3.47                            | 4.09                                   | 1324                            | 444                             | 44                             | 37                           | 54223E3                       | 74223E3 |
|   | 22 000                        | 25 x 40  | 4.12                            | 4.86                                   | 1324                            | 444                             | 34                             | 28                           | 44223E3                       | 24223E3 |
|   | 33 000                        | 30 x 40  | 4.58                            | 5.40                                   | 1984                            | 664                             | 32                             | 28                           | 54333E3                       | 74333E3 |
|   | 33 000                        | 25 x 50  | 4.70                            | 5.55                                   | 1984                            | 664                             | 30                             | 27                           | 44333E3                       | 24333E3 |
|   | 47 000                        | 35 x 40  | 5.10                            | 6.02                                   | 2824                            | 944                             | 31                             | 26                           | 54473E3                       | 74473E3 |
|   | 47 000                        | 30 x 50  | 5.39                            | 6.36                                   | 2824                            | 944                             | 28                             | 24                           | 44473E3                       | 24473E3 |
| 68 000  | 35 x 50                       | 5.88   | 6.94                            | 4084                                   | 1364                            | 28                              | 23                             | 54683E3                      | 74683E3                       |         |
| 16  | 4700                          | 22 x 25  | 2.01                            | 2.37                                   | 455                             | 154                             | 79                             | 62                           | 55472E3                       | 75472E3 |
|   | 6800                          | 22 x 30  | 2.54                            | 3.00                                   | 657                             | 222                             | 57                             | 45                           | 55682E3                       | 75682E3 |
|   | 10 000                        | 25 x 30  | 3.02                            | 3.56                                   | 964                             | 324                             | 47                             | 39                           | 55103E3                       | 75103E3 |
|   | 10 000                        | 22 x 40  | 3.28                            | 3.87                                   | 964                             | 324                             | 44                             | 34                           | 45103E3                       | 25103E3 |
|   | 15 000                        | 30 x 30  | 3.36                            | 3.96                                   | 1444                            | 484                             | 47                             | 37                           | 55153E3                       | 75153E3 |
|   | 15 000                        | 25 x 40  | 4.00                            | 4.72                                   | 1444                            | 484                             | 34                             | 28                           | 45153E3                       | 25153E3 |
|   | 22 000                        | 30 x 40  | 4.51                            | 5.32                                   | 2116                            | 708                             | 33                             | 28                           | 55223E3                       | 75223E3 |
|   | 22 000                        | 25 x 50  | 3.97                            | 4.68                                   | 2116                            | 708                             | 42                             | 41                           | 45223E3                       | 25223E3 |
|   | 33 000                        | 35 x 40  | 5.02                            | 5.92                                   | 3172                            | 1060                            | 32                             | 28                           | 55333E3                       | 75333E3 |
|   | 33 000                        | 30 x 50  | 4.75                            | 5.61                                   | 3172                            | 1060                            | 36                             | 34                           | 45333E3                       | 25333E3 |
| 47 000  | 35 x 50                       | 5.34   | 6.30                            | 4516                                   | 1508                            | 34                              | 32                             | 55473E3                      | 75473E3                       |         |
| 25  | 3300                          | 22 x 25  | 1.88                            | 2.22                                   | 499                             | 169                             | 89                             | 61                           | 56332E3                       | 76332E3 |
|   | 4700                          | 22 x 30  | 2.37                            | 2.80                                   | 709                             | 239                             | 65                             | 45                           | 56472E3                       | 76472E3 |
|   | 6800                          | 25 x 30  | 2.81                            | 3.32                                   | 1024                            | 344                             | 54                             | 41                           | 56682E3                       | 76682E3 |
|   | 6800                          | 22 x 40  | 3.16                            | 3.73                                   | 1024                            | 344                             | 47                             | 38                           | 46682E3                       | 26682E3 |
|   | 10 000                        | 30 x 30  | 3.25                            | 3.84                                   | 1504                            | 504                             | 50                             | 38                           | 56103E3                       | 76103E3 |
|   | 10 000                        | 25 x 40  | 3.73                            | 4.40                                   | 1504                            | 504                             | 39                             | 30                           | 46103E3                       | 26103E3 |
|   | 15 000                        | 30 x 40  | 4.73                            | 5.58                                   | 2254                            | 754                             | 30                             | 28                           | 56153E3                       | 76153E3 |
|   | 15 000                        | 25 x 50  | 3.92                            | 4.63                                   | 2254                            | 754                             | 43                             | 39                           | 46153E3                       | 26153E3 |
|   | 22 000                        | 35 x 40  | 4.48                            | 5.29                                   | 3304                            | 1104                            | 40                             | 28                           | 56223E3                       | 76223E3 |
|   | 22 000                        | 30 x 50  | 4.96                            | 5.85                                   | 3304                            | 1104                            | 36                             | 23                           | 46223E3                       | 26223E3 |
|   | 33 000                        | 35 x 50  | 4.98                            | 5.88                                   | 4954                            | 1654                            | 39                             | 33                           | 56333E3                       | 76333E3 |



| ELECTRICAL DATA AND ORDERING INFORMATION FOR 056 SERIES |                                  |   |  |  |                                  |                                  |                       |                     |                               |         |
|---|----------------------------------|---|--|--|----------------------------------|----------------------------------|-----------------------|---------------------|-------------------------------|---------|
| U <sub>R</sub><br>(V)                                   | C <sub>R</sub><br>100 Hz<br>(µF) | NOMINAL<br>CASE SIZE<br>Ø D x L<br>(mm) | I <sub>R</sub><br>100 Hz<br>85 °C<br>(A) | I <sub>R</sub><br>≥ 10 kHz<br>85 °C<br>(A) | I <sub>L1</sub><br>1 min<br>(µA) | I <sub>L5</sub><br>5 min<br>(µA) | ESR<br>100 Hz<br>(mΩ) | Z<br>10 kHz<br>(mΩ) | ORDERING CODE<br>MAL2056..... |         |
|   |                                  |   |  |  |                                  |                                  |                       |                     | 2-TERM.                       | 3-TERM. |
| 40  | 2200                             | 22 x 25                                 | 1.85                                     | 2.26                                       | 532                              | 180                              | 92                    | 61                  | 57222E3                       | 77222E3 |
|   | 3300                             | 22 x 30                                 | 2.09                                     | 2.55                                       | 796                              | 260                              | 67                    | 45                  | 57332E3                       | 77332E3 |
|   | 4700                             | 25 x 30                                 | 2.28                                     | 2.78                                       | 1132                             | 380                              | 82                    | 70                  | 57472E3                       | 77472E3 |
|   | 4700                             | 22 x 40                                 | 3.10                                     | 3.78                                       | 1132                             | 380                              | 49                    | 38                  | 47472E3                       | 27472E3 |
|   | 6800                             | 30 x 30                                 | 3.16                                     | 3.85                                       | 1636                             | 548                              | 53                    | 38                  | 57682E3                       | 77682E3 |
|   | 6800                             | 25 x 40                                 | 3.06                                     | 3.73                                       | 1636                             | 548                              | 58                    | 50                  | 47682E3                       | 27682E3 |
|   | 10 000                           | 30 x 40                                 | 4.20                                     | 5.12                                       | 2404                             | 804                              | 38                    | 28                  | 57103E3                       | 77103E3 |
|   | 10 000                           | 25 x 50                                 | 3.88                                     | 4.73                                       | 2404                             | 804                              | 44                    | 39                  | 47103E3                       | 27103E3 |
|   | 15 000                           | 35 x 40                                 | 4.05                                     | 4.94                                       | 3604                             | 1204                             | 49                    | 41                  | 57153E3                       | 77153E3 |
|   | 15 000                           | 30 x 50                                 | 4.45                                     | 5.43                                       | 3604                             | 1204                             | 41                    | 34                  | 47153E3                       | 27153E3 |
|   | 22 000                           | 35 x 50                                 | 4.86                                     | 5.93                                       | 5284                             | 1764                             | 40                    | 33                  | 57223E3                       | 77223E3 |
| 50  | 1500                             | 22 x 25                                 | 1.36                                     | 1.66                                       | 454                              | 154                              | 170                   | 130                 | 51152E3                       | 71152E3 |
|   | 2200                             | 22 x 30                                 | 1.75                                     | 2.14                                       | 664                              | 224                              | 120                   | 91                  | 51222E3                       | 71222E3 |
|   | 3300                             | 25 x 30                                 | 2.17                                     | 2.65                                       | 994                              | 334                              | 90                    | 72                  | 51332E3                       | 71332E3 |
|   | 3300                             | 22 x 40                                 | 2.42                                     | 2.95                                       | 994                              | 334                              | 80                    | 63                  | 41332E3                       | 21332E3 |
|   | 4700                             | 30 x 30                                 | 2.65                                     | 3.23                                       | 1414                             | 474                              | 75                    | 63                  | 51472E3                       | 71472E3 |
|   | 4700                             | 25 x 40                                 | 2.89                                     | 3.53                                       | 1414                             | 474                              | 65                    | 52                  | 41472E3                       | 21472E3 |
|   | 6800                             | 30 x 40                                 | 3.56                                     | 4.34                                       | 2044                             | 684                              | 53                    | 45                  | 51682E3                       | 71682E3 |
|   | 6800                             | 25 x 50                                 | 3.75                                     | 4.58                                       | 2044                             | 684                              | 50                    | 43                  | 41682E3                       | 21682E3 |
|   | 10 000                           | 35 x 40                                 | 4.05                                     | 4.94                                       | 3004                             | 1004                             | 49                    | 42                  | 51103E3                       | 71103E3 |
|   | 10 000                           | 30 x 50                                 | 4.50                                     | 5.49                                       | 3004                             | 1004                             | 40                    | 35                  | 41103E3                       | 21103E3 |
|   |                                  | 15 000                                  | 35 x 50                                  | 4.98                                       | 6.08                             | 4504                             | 1504                  | 39                  | 33                            | 51153E3 |
| 63  | 1000                             | 22 x 25                                 | 1.46                                     | 1.78                                       | 382                              | 130                              | 148                   | 104                 | 58102E3                       | 78102E3 |
|   | 1500                             | 22 x 30                                 | 1.87                                     | 2.28                                       | 571                              | 193                              | 105                   | 72                  | 58152E3                       | 78152E3 |
|   | 2200                             | 25 x 30                                 | 2.32                                     | 2.83                                       | 836                              | 281                              | 79                    | 59                  | 58222E3                       | 78222E3 |
|   | 2200                             | 22 x 40                                 | 2.54                                     | 3.10                                       | 836                              | 281                              | 73                    | 53                  | 48222E3                       | 28222E3 |
|   | 3300                             | 30 x 30                                 | 2.87                                     | 3.50                                       | 1251                             | 420                              | 64                    | 50                  | 58332E3                       | 78332E3 |
|   | 3300                             | 25 x 40                                 | 3.14                                     | 3.83                                       | 1251                             | 420                              | 55                    | 44                  | 48332E3                       | 28332E3 |
|   | 4700                             | 30 x 40                                 | 3.67                                     | 4.48                                       | 1780                             | 596                              | 50                    | 38                  | 58472E3                       | 78472E3 |
|   | 4700                             | 25 x 50                                 | 3.71                                     | 4.53                                       | 1780                             | 596                              | 48                    | 38                  | 48472E3                       | 28472E3 |
|   | 6800                             | 35 x 40                                 | 4.33                                     | 5.28                                       | 2574                             | 861                              | 43                    | 38                  | 58682E3                       | 78682E3 |
|   | 6800                             | 30 x 50                                 | 4.75                                     | 5.80                                       | 2574                             | 861                              | 42                    | 37                  | 48682E3                       | 28682E3 |
|   |                                  | 10 000                                  | 35 x 50                                  | 5.26                                       | 6.42                             | 3784                             | 1264                  | 35                  | 30                            | 58103E3 |
| 100   | 470                              | 22 x 25                                 | 0.77                                     | 0.94                                       | 286                              | 98                               | 535                   | 470                 | 59471E3                       | 79471E3 |
|   | 680                              | 22 x 30                                 | 0.99                                     | 1.21                                       | 412                              | 160                              | 375                   | 328                 | 59681E3                       | 79681E3 |
|   | 1000                             | 25 x 30                                 | 1.27                                     | 1.55                                       | 604                              | 204                              | 265                   | 235                 | 59102E3                       | 79102E3 |
|   | 1000                             | 22 x 40                                 | 1.35                                     | 1.65                                       | 604                              | 204                              | 260                   | 225                 | 49102E3                       | 29102E3 |
|   | 1500                             | 30 x 30                                 | 1.67                                     | 2.04                                       | 904                              | 304                              | 190                   | 170                 | 59152E3                       | 79152E3 |
|   | 1500                             | 25 x 40                                 | 1.75                                     | 2.14                                       | 904                              | 304                              | 180                   | 160                 | 49152E3                       | 29152E3 |
|   | 2200                             | 30 x 40                                 | 2.27                                     | 2.77                                       | 1324                             | 444                              | 130                   | 120                 | 59222E3                       | 79222E3 |
|   | 2200                             | 25 x 50                                 | 2.30                                     | 2.80                                       | 1324                             | 444                              | 125                   | 110                 | 49222E3                       | 29222E3 |
|   | 3300                             | 35 x 40                                 | 2.84                                     | 3.46                                       | 1984                             | 664                              | 100                   | 95                  | 59332E3                       | 79332E3 |
|   | 3300                             | 30 x 50                                 | 2.97                                     | 3.62                                       | 1984                             | 664                              | 92                    | 85                  | 49332E3                       | 29332E3 |
|   |                                  | 4700                                    | 35 x 50                                  | 3.59                                       | 4.38                             | 2824                             | 677                   | 75                  | 70                            | 59472E3 |

Table 3

| ELECTRICAL DATA AND ORDERING INFORMATION FOR 057 SERIES |                                  |   |  |                                  |                                  |                       |                     |                               |         |         |
|---|----------------------------------|---|--|----------------------------------|----------------------------------|-----------------------|---------------------|-------------------------------|---------|---------|
| U <sub>R</sub><br>(V)                                   | C <sub>R</sub><br>100 Hz<br>(μF) | NOMINAL<br>CASE SIZE<br>Ø D x L<br>(mm) | I <sub>R</sub><br>100 Hz<br>85 °C<br>(A) | I <sub>L1</sub><br>1 min<br>(μA) | I <sub>L5</sub><br>5 min<br>(μA) | ESR<br>100 Hz<br>(mΩ) | Z<br>10 kHz<br>(mΩ) | ORDERING CODE<br>MAL2057..... |         |         |
|   |                                  |   |  |                                  |                                  |                       |                     | 2-TERM.                       | 3-TERM. |         |
| 200   | 150                              | 22 x 25                                 | 0.77                                     | 184                              | 64                               | 950                   | 620                 | 52151E3                       | 72151E3 |         |
|   | 220                              | 22 x 30                                 | 1.00                                     | 268                              | 92                               | 650                   | 435                 | 52221E3                       | 72221E3 |         |
|   | 330                              | 25 x 30                                 | 1.36                                     | 400                              | 136                              | 430                   | 310                 | 52331E3                       | 72331E3 |         |
|   | 330                              | 22 x 40                                 | 1.36                                     | 400                              | 136                              | 430                   | 310                 | 42331E3                       | 22331E3 |         |
|   | 470                              | 30 x 30                                 | 1.80                                     | 568                              | 192                              | 310                   | 230                 | 52471E3                       | 72471E3 |         |
|   | 470                              | 25 x 40                                 | 1.80                                     | 568                              | 192                              | 310                   | 230                 | 42471E3                       | 22471E3 |         |
|   | 680                              | 30 x 40                                 | 2.39                                     | 820                              | 276                              | 210                   | 180                 | 52681E3                       | 72681E3 |         |
|   | 680                              | 25 x 50                                 | 2.39                                     | 820                              | 276                              | 210                   | 180                 | 42681E3                       | 22681E3 |         |
|   | 1000                             | 35 x 40                                 | 2.85                                     | 1204                             | 404                              | 160                   | 135                 | 52102E3                       | 72102E3 |         |
|   | 1000                             | 30 x 50                                 | 2.85                                     | 1204                             | 404                              | 160                   | 135                 | 42102E3                       | 22102E3 |         |
|   | 1500                             | 35 x 50                                 | 3.66                                     | 1804                             | 604                              | 120                   | 105                 | 52152E3                       | 72152E3 |         |
| 250   | 100                              | 22 x 25                                 | 0.63                                     | 154                              | 54                               | 1440                  | 770                 | 53101E3                       | 73101E3 |         |
|   | 150                              | 22 x 30                                 | 0.83                                     | 229                              | 79                               | 960                   | 520                 | 53151E3                       | 73151E3 |         |
|   | 220                              | 25 x 30                                 | 1.10                                     | 334                              | 114                              | 660                   | 365                 | 53221E3                       | 73221E3 |         |
|   | 220                              | 22 x 40                                 | 1.10                                     | 334                              | 114                              | 660                   | 365                 | 43221E3                       | 23221E3 |         |
|   | 330                              | 30 x 30                                 | 1.49                                     | 499                              | 169                              | 440                   | 265                 | 53331E3                       | 73331E3 |         |
|   | 330                              | 25 x 40                                 | 1.49                                     | 499                              | 169                              | 440                   | 265                 | 43331E3                       | 23331E3 |         |
|   | 470                              | 30 x 40                                 | 1.98                                     | 709                              | 239                              | 310                   | 185                 | 53471E3                       | 73471E3 |         |
|   | 470                              | 25 x 50                                 | 1.98                                     | 709                              | 239                              | 310                   | 185                 | 43471E3                       | 23471E3 |         |
|   | 680                              | 35 x 40                                 | 2.60                                     | 1024                             | 344                              | 240                   | 145                 | 53681E3                       | 73681E3 |         |
|   | 680                              | 30 x 50                                 | 2.60                                     | 1024                             | 344                              | 240                   | 145                 | 43681E3                       | 23681E3 |         |
|   | 1000                             | 35 x 50                                 | 3.12                                     | 1504                             | 504                              | 160                   | 105                 | 53102E3                       | 73102E3 |         |
| 385   | 47                               | 22 x 25                                 | 0.50                                     | 112                              | 40                               | 3000                  | 1400                | 58479E3                       | 78479E3 |         |
|   | 68                               | 22 x 30                                 | 0.63                                     | 161                              | 56                               | 2100                  | 1000                | 58689E3                       | 68689E3 |         |
|   | 100                              | 25 x 30                                 | 0.86                                     | 235                              | 81                               | 1400                  | 780                 | 58101E3                       | 78101E3 |         |
|   | 100                              | 22 x 40                                 | 0.86                                     | 235                              | 81                               | 1400                  | 780                 | 48101E3                       | 68101E3 |         |
|   | 100                              | 22 x 35                                 | 0.84                                     | 235                              | 81                               | 1400                  | 780                 | 38101E3                       | 88101E3 |         |
|   | 150                              | 30 x 30                                 | 1.16                                     | 350                              | 119                              | 950                   | 520                 | 58151E3                       | 78151E3 |         |
|   | 150                              | 25 x 40                                 | 1.16                                     | 350                              | 119                              | 950                   | 520                 | 48151E3                       | 68151E3 |         |
|   | 220                              | 30 x 40                                 | 1.57                                     | 512                              | 173                              | 650                   | 400                 | 58221E3                       | 78221E3 |         |
|   | 220                              | 30 x 35                                 | 1.50                                     | 512                              | 173                              | 650                   | 400                 | 38221E3                       | 90051E3 |         |
|   | 220                              | 25 x 50                                 | 1.57                                     | 512                              | 173                              | 650                   | 400                 | 48221E3                       | 88221E3 |         |
|   | 330                              | 35 x 35                                 | 1.73                                     | 766                              | 258                              | 480                   | 280                 | 68331E3                       | 88331E3 |         |
|   | 330                              | 30 x 45                                 | 1.75                                     | 766                              | 258                              | 480                   | 280                 | 38331E3                       | 78331E3 |         |
|   | 470                              | 35 x 50                                 | 2.40                                     | 1089                             | 366                              | 340                   | 220                 | 58471E3                       | 78471E3 |         |
| 470   | 35 x 45                          | 2.29                                    | 1089                                     | 366                              | 340                              | 220                   | 48471E3             | 28471E3                       |         |         |
| 400   | 47                               | 22 x 25                                 | 0.50                                     | 117                              | 42                               | 3000                  | 1400                | 56479E3                       | 76479E3 |         |
|   | 68                               | 22 x 30                                 | 0.63                                     | 167                              | 58                               | 2100                  | 1000                | 56689E3                       | 76689E3 |         |
|   | 100                              | 25 x 30                                 | 0.86                                     | 244                              | 84                               | 1400                  | 780                 | 56101E3                       | 76101E3 |         |
|   | 100                              | 22 x 35                                 | 0.84                                     | 240                              | 84                               | 1400                  | 780                 | 36101E3                       | 66101E3 |         |
|   | 150                              | 30 x 30                                 | 1.16                                     | 364                              | 124                              | 950                   | 520                 | 56151E3                       | 90054E3 |         |
|   | 150                              | 25 x 40                                 | 1.16                                     | 364                              | 124                              | 950                   | 520                 | 46151E3                       | 86151E3 |         |
|   | 220                              | 30 x 35                                 | 1.50                                     | 532                              | 180                              | 650                   | 400                 | 36221E3                       | 90055E3 |         |
|   | 220                              | 25 x 50                                 | 1.57                                     | 532                              | 180                              | 650                   | 400                 | 46221E3                       | 86221E3 |         |
|   | 330                              | 35 x 40                                 | 1.85                                     | 796                              | 268                              | 480                   | 280                 | 56331E3                       | 76331E3 |         |
|   | 330                              | 30 x 50                                 | 1.85                                     | 796                              | 268                              | 480                   | 280                 | 46331E3                       | 26331E3 |         |
|   | 470                              | 35 x 50                                 | 2.40                                     | 1132                             | 380                              | 340                   | 220                 | 56471E3                       | 76471E3 |         |
|   | 450                              | 47                                      | 22 x 30                                  | 0.26                             | 131                              | 45                    | 5600                | 4400                          | 67479E3 | 87479E3 |
|   |                                  | 68                                      | 22 x 30                                  | 0.33                             | 188                              | 65                    | 3900                | 3100                          | 57689E3 | 77689E3 |
| 100   |                                  | 30 x 30                                 | 0.48                                     | 274                              | 94                               | 2600                  | 2100                | 57101E3                       | 77101E3 |         |
| 100   |                                  | 25 x 35                                 | 0.46                                     | 274                              | 94                               | 2600                  | 2100                | 37101E3                       | 17101E3 |         |
| 150   |                                  | 30 x 35                                 | 0.66                                     | 409                              | 140                              | 1600                  | 1300                | 37151E3                       | 17151E3 |         |
| 150   |                                  | 25 x 50                                 | 0.70                                     | 409                              | 140                              | 1600                  | 1300                | 47151E3                       | 27151E3 |         |
| 220   |                                  | 35 x 40                                 | 0.92                                     | 598                              | 202                              | 1100                  | 900                 | 57221E3                       | 77221E3 |         |
| 220   |                                  | 30 x 45                                 | 0.73                                     | 598                              | 202                              | 1100                  | 900                 | 37221E3                       | 17221E3 |         |
| 330   |                                  | 35 x 50                                 | 1.26                                     | 895                              | 301                              | 700                   | 600                 | 57331E3                       | 77331E3 |         |
| 330   |                                  | 35 x 45                                 | 1.20                                     | 895                              | 301                              | 700                   | 600                 | 47331E3                       | 27331E3 |         |



| ADDITIONAL ELECTRICAL DATA         |                          |  |
|------------------------------------|--------------------------|--|
| PARAMETER                          | CONDITIONS               | VALUE  |
| <b>Voltage</b>                     |                          |  |
| Surge voltage                      | ≤ 250 V versions         | $U_s = 1.15 \times U_R$                            |
|                                    | ≥ 385 V versions         | $U_s = 1.1 \times U_R$                             |
| Reverse voltage                    |                          | $U_{rev} \leq 1 \text{ V}$                         |
| <b>Current</b>                     |                          |  |
| Leakage current                    | After 1 minute at $U_R$  | $I_{L1} \leq 0.006 C_R \times U_R + 4 \mu\text{A}$ |
|                                    | After 5 minutes at $U_R$ | $I_{L5} \leq 0.002 C_R \times U_R + 4 \mu\text{A}$ |
| <b>Inductance</b>                  |                          |  |
| Equivalent series inductance (ESL) | All case sizes           | typ. 19 nH<br>max. 25 nH                           |

**CAPACITANCE (C)**

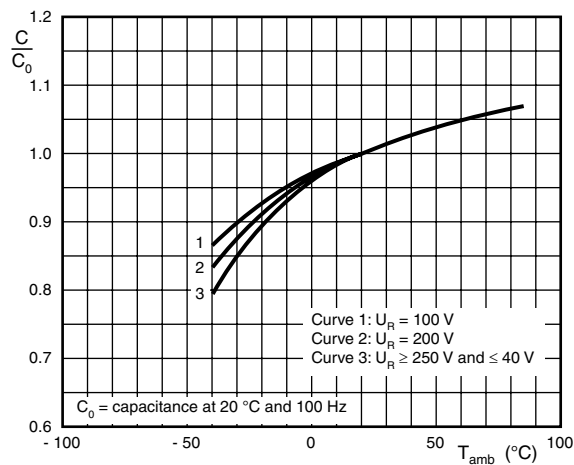


Fig.6 Typical multiplier of capacitance as a function of ambient temperature

**EQUIVALENT SERIES RESISTANCE (ESR)**

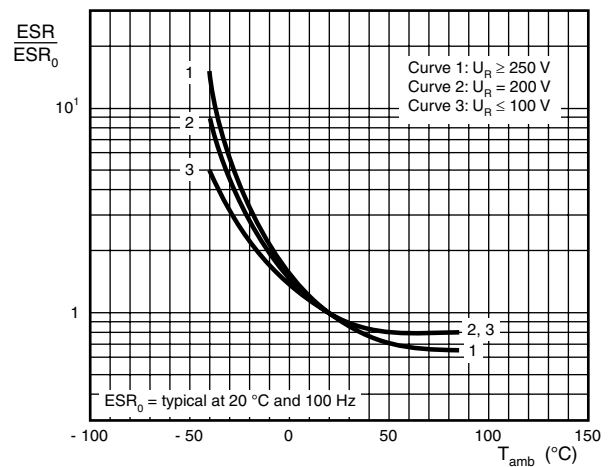


Fig.8 Typical multiplier of ESR as a function of ambient temperature

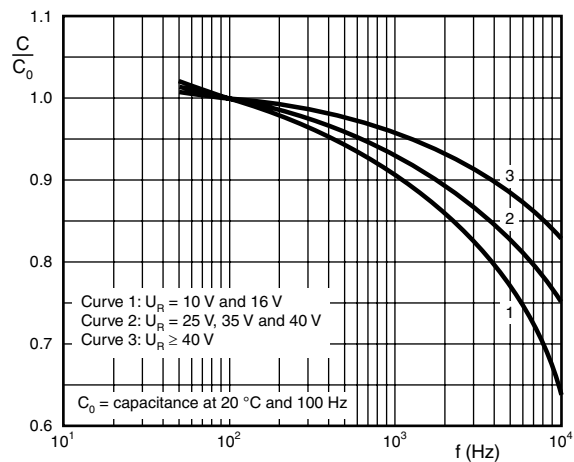


Fig.7 Typical multiplier of capacitance as a function of frequency

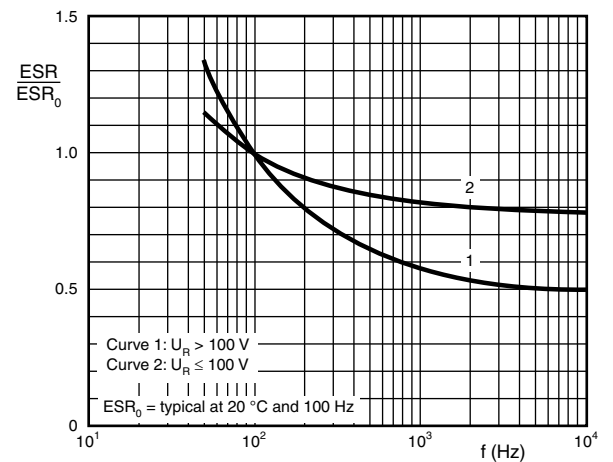


Fig.9 Typical multiplier of ESR as a function of frequency

**IMPEDANCE (Z)**

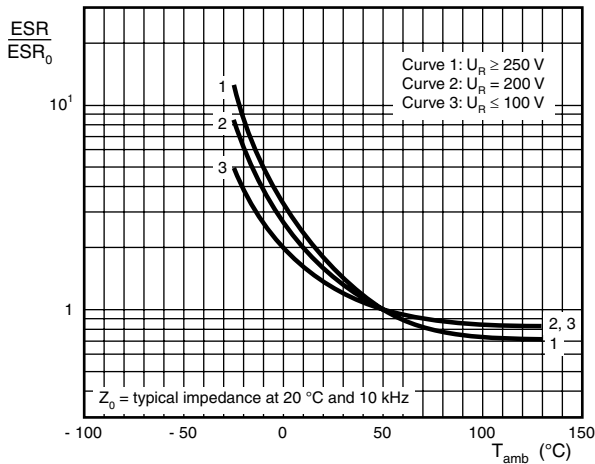


Fig.10 Typical multiplier of impedance as a function of ambient temperature

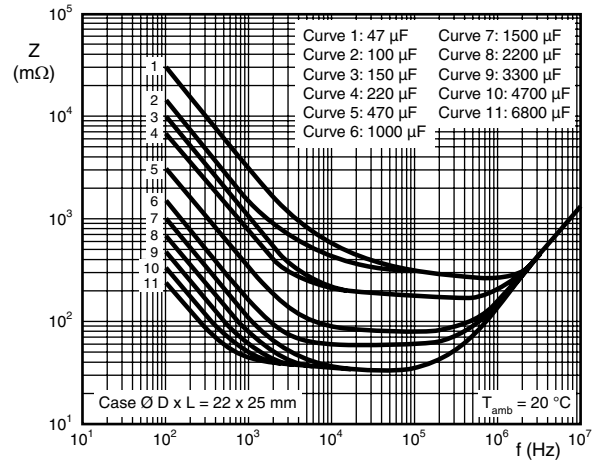


Fig.11 Typical impedance as a function of frequency

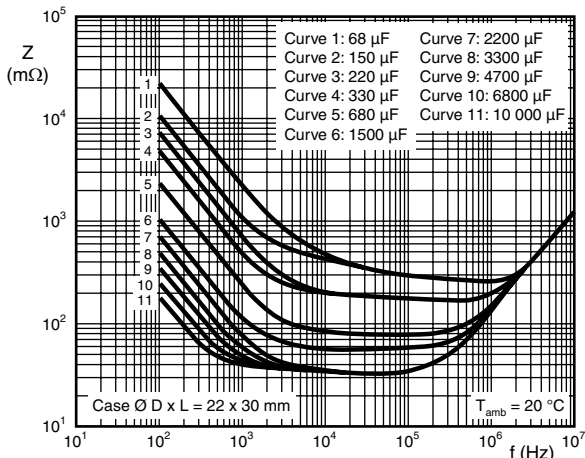


Fig.12 Typical impedance as a function of frequency

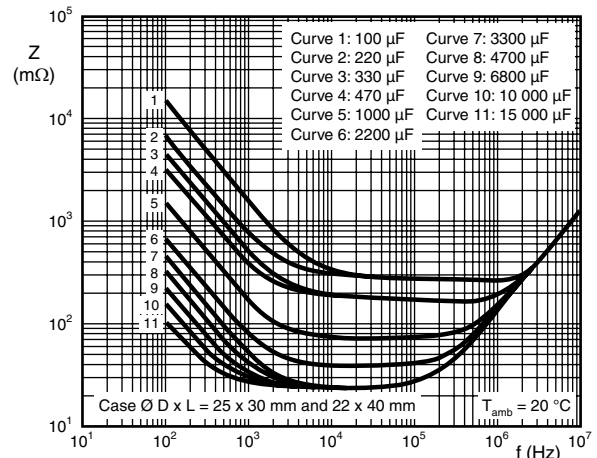


Fig.13 Typical impedance as a function of frequency

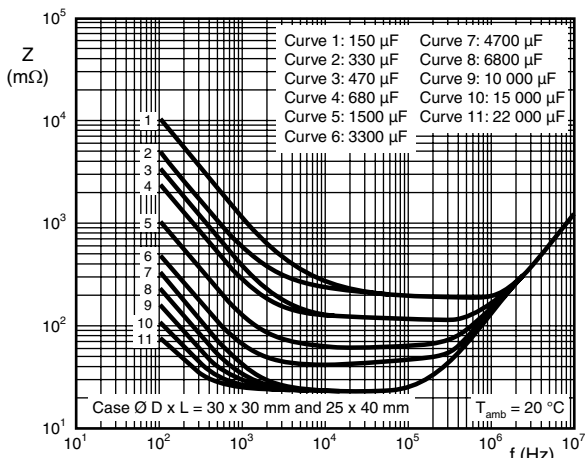


Fig.14 Typical impedance as a function of frequency

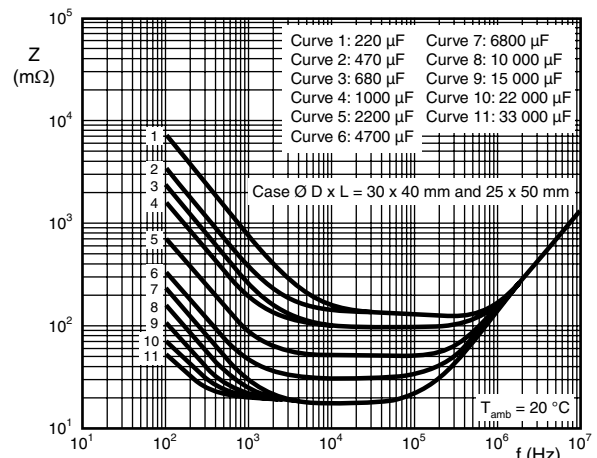


Fig.15 Typical impedance as a function of frequency





**IMPEDANCE (Z)**

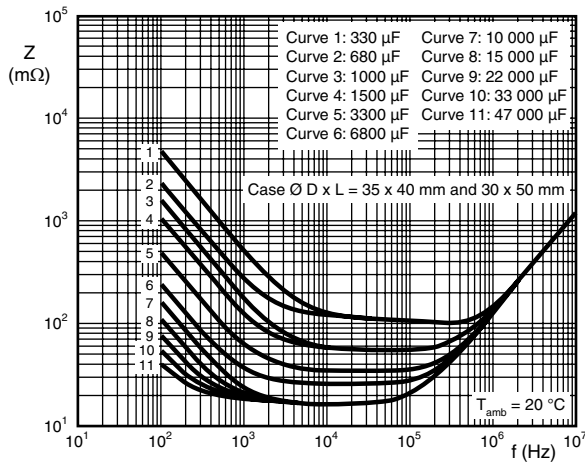


Fig.16 Typical impedance as a function of frequency

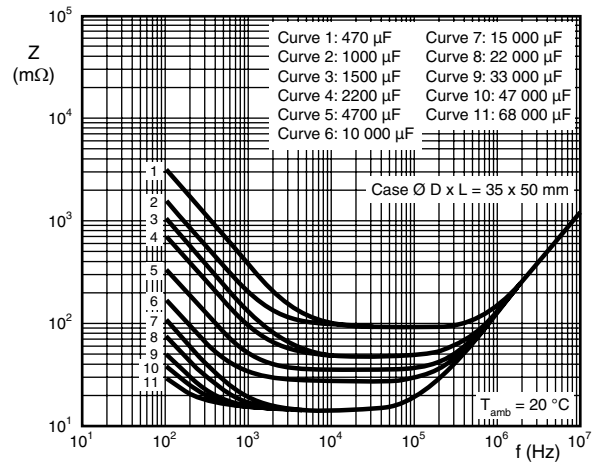
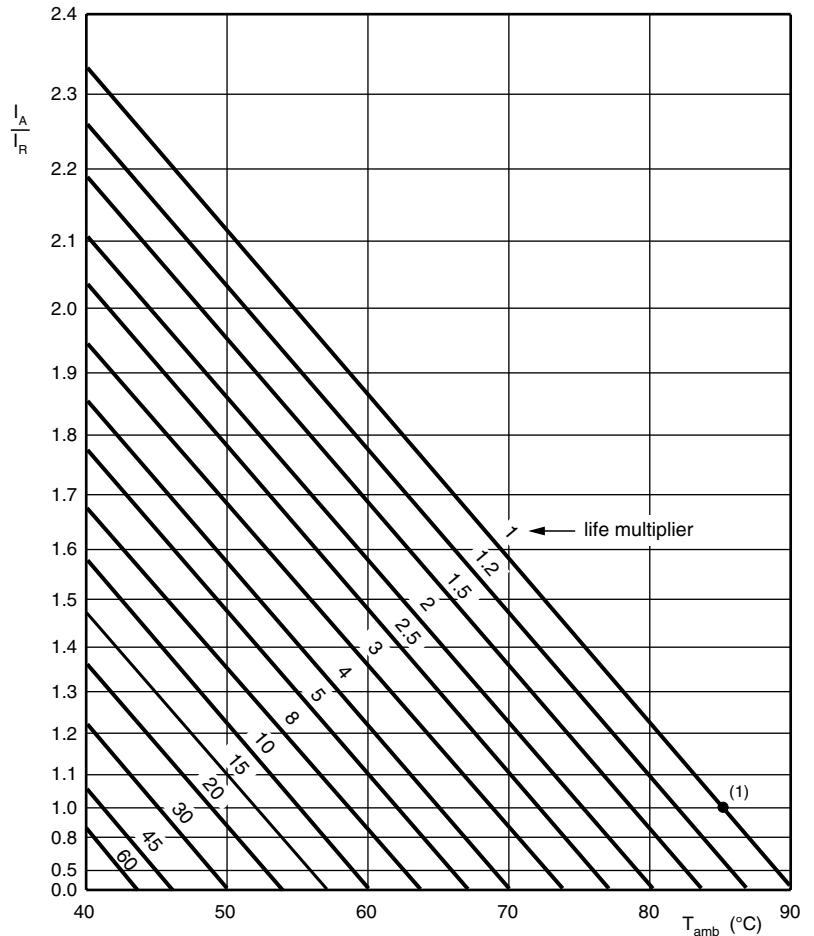


Fig.17 Typical impedance as a function of frequency

**RIPPLE CURRENT AND USEFUL LIFE**



$I_A$  = actual ripple current at 100 Hz and 85 °C  
 $I_R$  = rated ripple current at 100 Hz and 85 °C  
 (1) Useful life at 85 °C and  $I_R$  applied:  
 12 000 hours (450 V types: 5000 hours)

Fig.18 Multiplier of useful life as a function of ambient temperature and ripple current load

Table 4

| <b>MULTIPLIER OF RIPPLE CURRENT (<math>I_R</math>) AS A FUNCTION OF FREQUENCY</b> |                    |                     |               |
|---|--------------------|---------------------|---------------|
| FREQUENCY<br>(Hz)   | $I_R$ MULTIPLIER   |                     |               |
|   | $U_R = 10$ to 25 V | $U_R = 40$ to 100 V | $U_R > 100$ V |
| 50  | 0.93               | 0.91                | 0.86          |
| 100   | 1.00               | 1.00                | 1.00          |
| 200   | 1.04               | 1.05                | 1.13          |
| 400   | 1.07               | 1.09                | 1.21          |
| 1000  | 1.11               | 1.13                | 1.29          |
| 2000  | 1.13               | 1.15                | 1.32          |
| 4000  | 1.15               | 1.18                | 1.35          |
| $\geq 10\ 000$  | 1.18               | 1.22                | 1.40          |

Table 5

| <b>TEST PROCEDURES AND REQUIREMENTS</b>        |  |  |  |
|--|--|--|--|
| TEST   |  | PROCEDURE<br>(quick reference)   | REQUIREMENTS   |
| NAME OF TEST                                   | REFERENCE                                  |  |  |
| Endurance                                      | IEC 60384-4/<br>EN130300<br>subclause 4.13 | $T_{amb} = 85\ ^\circ\text{C}$ ; $U_R$ applied;<br>5000 hours (450 V types: 2000 hours)  | $U_R \leq 100$ V; $\Delta C/C$ : $\pm 15\ \%$<br>$U_R > 100$ V; $\Delta C/C$ : $\pm 10\ \%$<br>$ESR \leq 1.3$ x spec. limit<br>$Z \leq 2$ x spec. limit<br>$I_{L5} \leq$ spec. limit   |
| Useful life                                    | CECC 30301<br>subclause 1.8.1              | $T_{amb} = 85\ ^\circ\text{C}$ ; $U_R$ and $I_R$ applied;<br>12 000 hours (450 V types: 5000 hours)  | $U_R \leq 100$ V; $\Delta C/C$ : $\pm 45\ \%$<br>$U_R > 100$ V; $\Delta C/C$ : $\pm 30\ \%$<br>$ESR \leq 3$ x spec. limit<br>$Z \leq 3$ x spec. limit<br>$I_{L5} \leq$ spec. limit<br>no short or open circuit,<br>no visible damage<br>total failure percentage:<br>$U_R \leq 100$ V: $\leq 1\ \%$ ;<br>$U_R > 100$ V: $\leq 3\ \%$ |
| Shelf life<br>(storage at<br>high temperature) | IEC 60384-4/<br>EN130300<br>subclause 4.17 | $T_{amb} = 85\ ^\circ\text{C}$ ; no voltage applied;<br>500 hours<br>After test: $U_R$ to be applied for 30 minutes<br>24 hours to 48 hours before measurement | $\Delta C/C$ : $\pm 10\ \%$<br>$ESR \leq 1.2$ x spec. limit<br>$I_{L5} \leq 2$ x spec. limit   |



## Disclaimer

All product specifications and data are subject to change without notice.

Vishay Intertechnology, Inc., its affiliates, agents, and employees, and all persons acting on its or their behalf (collectively, "Vishay"), disclaim any and all liability for any errors, inaccuracies or incompleteness contained herein or in any other disclosure relating to any product.

Vishay disclaims any and all liability arising out of the use or application of any product described herein or of any information provided herein to the maximum extent permitted by law. The product specifications do not expand or otherwise modify Vishay's terms and conditions of purchase, including but not limited to the warranty expressed therein, which apply to these products.

No license, express or implied, by estoppel or otherwise, to any intellectual property rights is granted by this document or by any conduct of Vishay.

The products shown herein are not designed for use in medical, life-saving, or life-sustaining applications unless otherwise expressly indicated. Customers using or selling Vishay products not expressly indicated for use in such applications do so entirely at their own risk and agree to fully indemnify Vishay for any damages arising or resulting from such use or sale. Please contact authorized Vishay personnel to obtain written terms and conditions regarding products designed for such applications.

Product names and markings noted herein may be trademarks of their respective owners.

Компания «Океан Электроники» предлагает заключение долгосрочных отношений при поставках импортных электронных компонентов на взаимовыгодных условиях!

Наши преимущества:

- Поставка оригинальных импортных электронных компонентов напрямую с производств Америки, Европы и Азии, а так же с крупнейших складов мира;
- Широкая линейка поставок активных и пассивных импортных электронных компонентов (более 30 млн. наименований);
- Поставка сложных, дефицитных, либо снятых с производства позиций;
- Оперативные сроки поставки под заказ (от 5 рабочих дней);
- Экспресс доставка в любую точку России;
- Помощь Конструкторского Отдела и консультации квалифицированных инженеров;
- Техническая поддержка проекта, помощь в подборе аналогов, поставка прототипов;
- Поставка электронных компонентов под контролем ВП;
- Система менеджмента качества сертифицирована по Международному стандарту ISO 9001;
- При необходимости вся продукция военного и аэрокосмического назначения проходит испытания и сертификацию в лаборатории (по согласованию с заказчиком);
- Поставка специализированных компонентов военного и аэрокосмического уровня качества (Xilinx, Altera, Analog Devices, Intersil, Interpoint, Microsemi, Actel, Aeroflex, Peregrine, VPT, Syfer, Eurofarad, Texas Instruments, MS Kennedy, Miteq, Cobham, E2V, MA-COM, Hittite, Mini-Circuits, General Dynamics и др.);

Компания «Океан Электроники» является официальным дистрибьютором и эксклюзивным представителем в России одного из крупнейших производителей разъемов военного и аэрокосмического назначения «JONHON», а так же официальным дистрибьютором и эксклюзивным представителем в России производителя высокотехнологичных и надежных решений для передачи СВЧ сигналов «FORSTAR».



## JONHON

«JONHON» (основан в 1970 г.)

Разъемы специального, военного и аэрокосмического назначения:

(Применяются в военной, авиационной, аэрокосмической, морской, железнодорожной, горно- и нефтедобывающей отраслях промышленности)

«FORSTAR» (основан в 1998 г.)

ВЧ соединители, коаксиальные кабели, кабельные сборки и микроволновые компоненты:

(Применяются в телекоммуникациях гражданского и специального назначения, в средствах связи, РЛС, а так же военной, авиационной и аэрокосмической отраслях промышленности).



Телефон: 8 (812) 309-75-97 (многоканальный)

Факс: 8 (812) 320-03-32

Электронная почта: [ocean@oceanchips.ru](mailto:ocean@oceanchips.ru)

Web: <http://oceanchips.ru/>

Адрес: 198099, г. Санкт-Петербург, ул. Калинина, д. 2, корп. 4, лит. А