

OPERATING CHARACTERISTICS 1 4

| | |
|-------------|-----|
| GAUSS | |
| OPERATE MAX | 495 |
| RELEASE MIN | 200 |
| DIFF MIN | 35 |

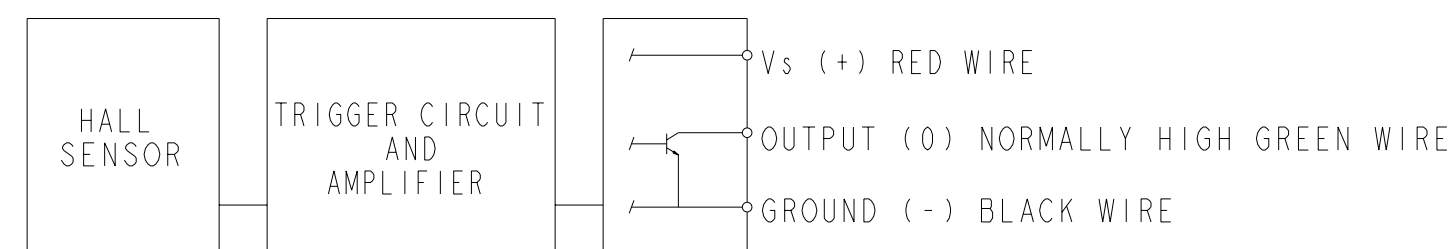
ABSOLUTE MAXIMUM RATINGS

| | |
|--|---|
| SUPPLY VOLTAGE (V _s) 8 | -1.0 VDC TO +25.0 VDC |
| VOLTAGE EXTERNALLY APPLIED TO OUTPUT | +25 VOLTS DC MAX WITH SWITCH IN "OFF" CONDITION ONLY -0.5 VOLTS MAX WITH SWITCH IN "OFF" OR "ON" CONDITION |
| OUTPUT CURRENT | 40 mA (SINK PER OUTPUT) |
| TEMPERATURE OPERATE AND STORAGE | -40°C TO 100°C |
| MAGNETIC FLUX | NO LIMIT, THE CIRCUIT CANNOT BE DAMAGED BY MAGNETIC OVERDRIVE |

ELECTRICAL CHARACTERISTICS

| | MIN | TYP | MAX | REMARKS |
|--|-----|-----|----------|----------------------------|
| SUPPLY CURRENT 7 | | | 10.0 mA | ON CONDITION |
| OUTPUT VOLTAGE (OPERATED) | | | 0.4 V | SINKING 20 mA PER OUTPUT |
| OUTPUT LEAKAGE CURRENT (RELEASED) | | | 20μ A | LEAKAGE INTO SWITCH OUTPUT |
| OUTPUT SWITCHING TIME (SINKING 20 mA) | | | | |
| RISE TIME 4 | | | 1.5μ SEC | 10% TO 90% |
| FALL TIME | | | 0.5μ SEC | 90% TO 10% |

NOTE: THIS DEVICE IS NOT PROTECTED AGAINST HIGH ELECTRICAL NOISE. IF ERRATIC OPERATION OCCURS AFTER INSTALLATION, INSTALL A CAPACITOR ACROSS THE INPUT TERMINALS (0.1 MFD). IF ERRATIC OPERATION CONTINUES, YOU MAY HAVE TO USE THE INDUSTRIAL DEVICES THAT MICRO SWITCH MANUFACTURES. PLEASE CONTACT YOUR LOCAL FIELD REPRESENTATIVE FOR INFORMATION.



BLOCK DIAGRAM SHOWING CURRENT SINKING OUTPUTS

- NOTES
- 1 FLUX ENTERING THE SOUTH POLE OF THE MAGNET WILL OPERATE THE SENSOR WHEN MAGNET IS POSITIONED AS SHOWN IN FIGURE 2. THIS ASSUMES THE CONVENTION THAT THE DIRECTION OF THE EXTERNAL FLUX OF A MAGNET IS FROM THE NORTH TO THE SOUTH POLE OF THE MAGNET
 - 2 LEADWIRES (INDIVIDUAL WIRES) ARE 24 GAGE STRANDED WITH IRRADIATED POLYETHYLENE INSULATION
 - 3 DATE CODE LOCATED IN THIS AREA
 - 4 FROM -40°C TO 100°C AND 4.5 TO 24 VOLTS
 - 5 CATALOG LISTING LOCATED IN THIS AREA
 - 6 SENSITIVE AREA IS LOCATED .050 BEHIND THE SENSING FACE
 - 7 AT 24° ± 2° C
 - 8 V_s IS THE UNREGULATED SUPPLY VOLTAGE

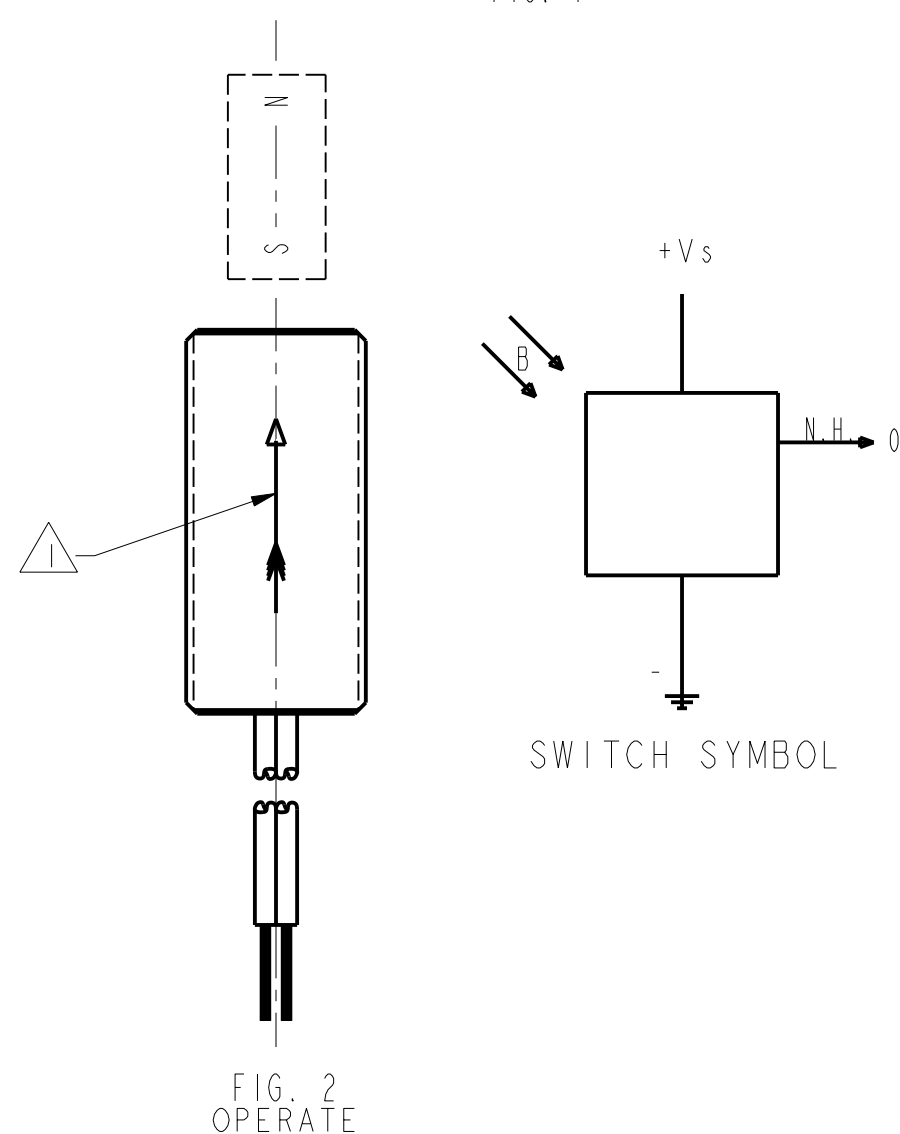
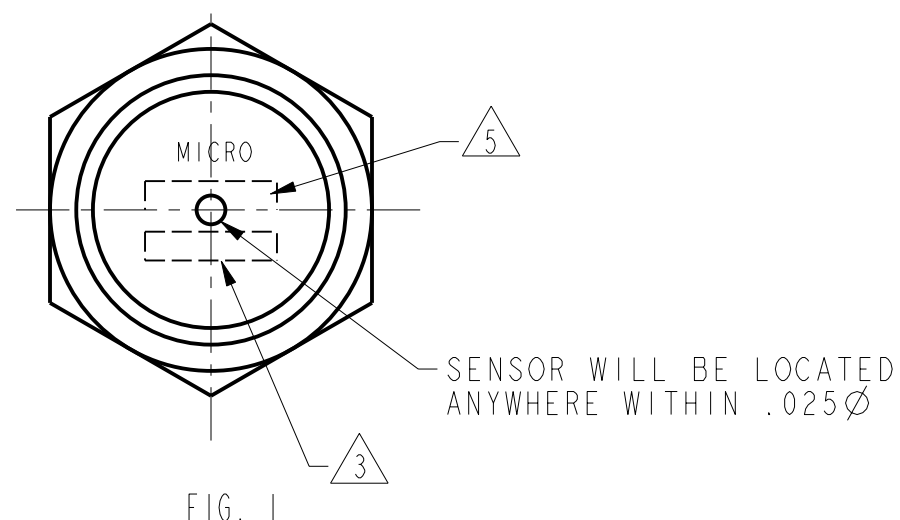
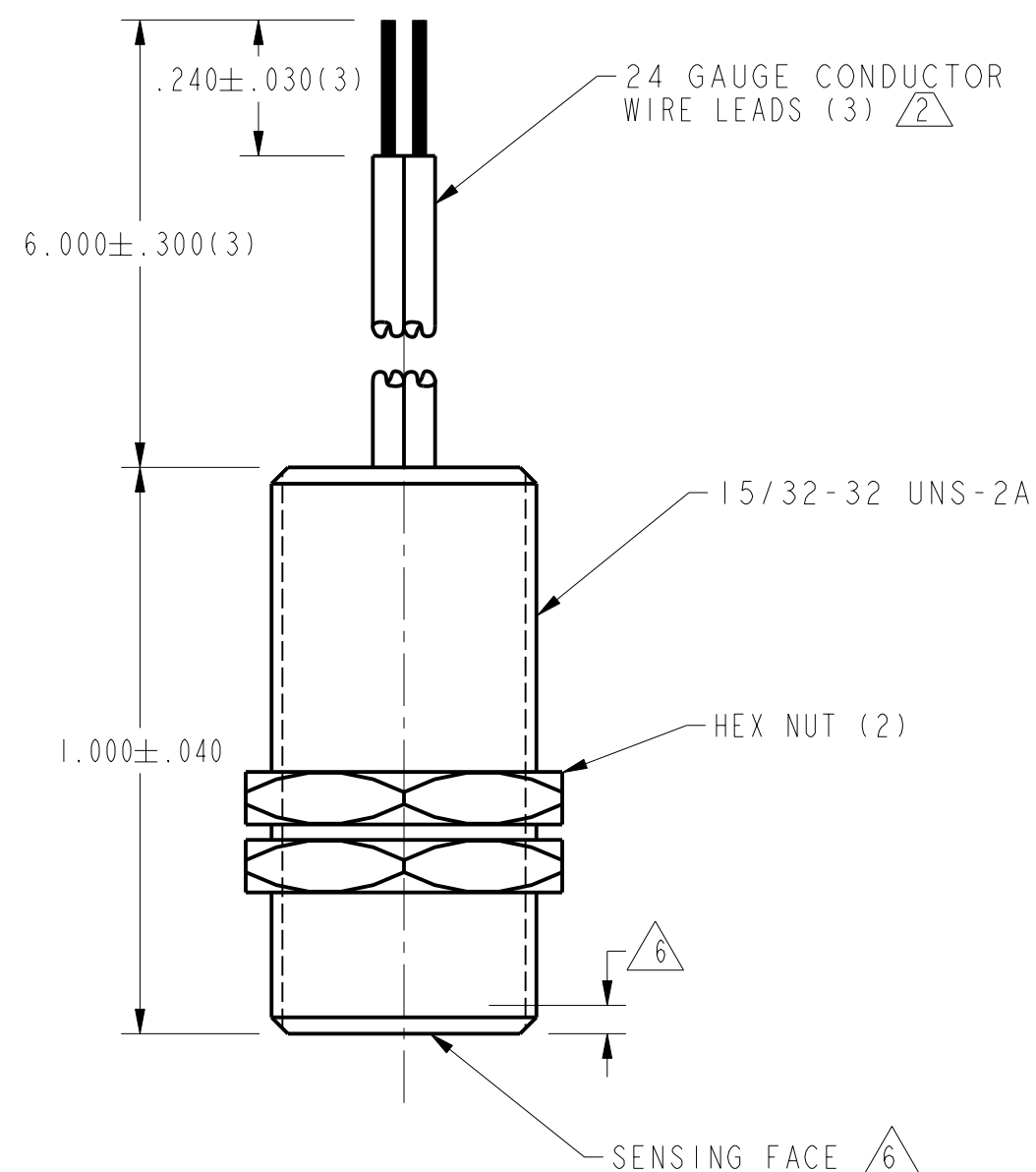


FIG. 2 OPERATE

SWITCH SYMBOL

| | |
|---|---------------|
| THIRD ANGLE PROJECTION | |
| | |
| SCALE 3" = 1" | |
| DO NOT SCALE PRINT | |
| UNLESS OTHERWISE SPECIFIED TOLERANCES ARE | |
| ONE PLACE | (.0) ± .030 |
| TWO PLACES | (.00) ± .015 |
| THREE PLACES | (.000) ± .005 |
| ANGLES | ± |
| WEIGHT | |

THIS DRAWING COVERS A PROPRIETARY ITEM AND IS THE PROPERTY OF MICRO SWITCH, A DIVISION OF HONEYWELL. THIS DRAWING IS NOT TO BE COPIED OR USED WITHOUT THE APPROVAL OF MICRO SWITCH.

MICRO SWITCH
a Honeywell Division

MAGNETICALLY OPERATED CYLINDRICAL HALL SWITCH

CATALOG LISTING
103SR13A-1

P.T.C./CAD [20] DRAWN [] CHECK [] JAF []
 TSM [] 27 JUL 99 []
 REVISIONS
 A [] CO95082A [] TSM [] 27 JUL 99 []
 ISSUE []
 DRAWING NUMBER []
 103SR13A-1
 PAGE [] OF []
 RELEASE NO. PR-4252
 REPLACES []



OPERATING CHARACTERISTICS

| | |
|-------------|-----|
| GAUSS | |
| OPERATE MAX | 495 |
| RELEASE MIN | 200 |
| DIFF MIN | 35 |

ABSOLUTE MAXIMUM RATINGS

| | |
|--------------------------------------|---|
| SUPPLY VOLTAGE (V _s) | -1.0 VDC TO +25.0 VDC |
| VOLTAGE EXTERNALLY APPLIED TO OUTPUT | +25 VOLTS DC MAX WITH SWITCH IN "OFF" CONDITION ONLY -0.5 VOLTS MAX WITH SWITCH IN "OFF" OR "ON" CONDITION |
| OUTPUT CURRENT | 40 mA (SINK PER OUTPUT) |
| TEMPERATURE OPERATE AND STORAGE | -40°C TO 100°C |
| MAGNETIC FLUX | NO LIMIT, THE CIRCUIT CANNOT BE DAMAGED BY MAGNETIC OVERDRIVE |

ELECTRICAL CHARACTERISTICS

| | MIN | TYP | MAX | REMARKS |
|---------------------------------------|-----|-----|----------|----------------------------|
| SUPPLY CURRENT | | | 10.0 mA | ON CONDITION |
| OUTPUT VOLTAGE (OPERATED) | | | 0.4 V | SINKING 20 mA PER OUTPUT |
| OUTPUT LEAKAGE CURRENT (RELEASED) | | | 20 μA | LEAKAGE INTO SWITCH OUTPUT |
| OUTPUT SWITCHING TIME (SINKING 20 mA) | | | | |
| RISE TIME | | | 1.5 μSEC | 10% TO 90% |
| FALL TIME | | | 0.5 μSEC | 90% TO 10% |

NOTE: THIS DEVICE IS NOT PROTECTED AGAINST HIGH ELECTRICAL NOISE. IF ERRATIC OPERATION OCCURS AFTER INSTALLATION, INSTALL A CAPACITOR ACROSS THE INPUT TERMINALS (0.1 MFD). IF ERRATIC OPERATION CONTINUES, YOU MAY HAVE TO USE THE INDUSTRIAL DEVICES THAT MICRO SWITCH MANUFACTURES. PLEASE CONTACT YOUR LOCAL FIELD REPRESENTATIVE FOR INFORMATION.



BLOCK DIAGRAM SHOWING CURRENT SINKING OUTPUTS

NOTES

- 1 FLUX ENTERING THE SOUTH POLE OF THE MAGNET WILL OPERATE THE SENSOR WHEN MAGNET IS POSITIONED AS SHOWN IN FIGURE 2. THIS ASSUMES THE CONVENTION THAT THE DIRECTION OF THE EXTERNAL FLUX OF A MAGNET IS FROM THE NORTH TO THE SOUTH POLE OF THE MAGNET
- 2 LEADWIRES (INDIVIDUAL WIRES) ARE 24 GAGE STRANDED WITH IRRADIATED POLYETHYLENE INSULATION
- 3 DATE CODE LOCATED IN THIS AREA
- 4 FROM -40°C TO 100°C AND 4.5 TO 24 VOLTS
- 5 CATALOG LISTING LOCATED IN THIS AREA
- 6 SENSITIVE AREA IS LOCATED .050 BEHIND THE SENSING FACE
- 7 AT 24° ± 2° C
- 8 V_s IS THE UNREGULATED SUPPLY VOLTAGE



| | |
|---|---------------|
| THIRD ANGLE PROJECTION | |
| SCALE 3" = 1" | |
| DO NOT SCALE PRINT | |
| UNLESS OTHERWISE SPECIFIED TOLERANCES ARE | |
| ONE PLACE | (.0) ± .030 |
| TWO PLACES | (.00) ± .015 |
| THREE PLACES | (.000) ± .005 |
| ANGLES | ± |
| WEIGHT | |

THIS DRAWING COVERS A PROPRIETARY ITEM AND IS THE PROPERTY OF MICRO SWITCH, A DIVISION OF HONEYWELL. THIS DRAWING IS NOT TO BE COPIED OR USED WITHOUT THE APPROVAL OF MICRO SWITCH.

MICRO SWITCH
a Honeywell Division

MAGNETICALLY
OPERATED CYLINDRICAL
HALL SWITCH

CATALOG LISTING
103SR13A-1

103SR13A-1
DRAWING NUMBER
PAGE 1 OF 1
RELEASE NO. PR-4252
REPLACES
ISSUE 12
REVISIONS
A C095082A TSM 27 JUL 99
B 201747 JAF DEC 00
DRAWN 27 JUL 99
CHECK JAF
CHECK 27 JUL 99
P.T.C./CAD 20
TSM 27 JUL 99
CHECK JAF
CHECK 27 JUL 99

Компания «Океан Электроники» предлагает заключение долгосрочных отношений при поставках импортных электронных компонентов на взаимовыгодных условиях!

Наши преимущества:

- Поставка оригинальных импортных электронных компонентов напрямую с производств Америки, Европы и Азии, а так же с крупнейших складов мира;
- Широкая линейка поставок активных и пассивных импортных электронных компонентов (более 30 млн. наименований);
- Поставка сложных, дефицитных, либо снятых с производства позиций;
- Оперативные сроки поставки под заказ (от 5 рабочих дней);
- Экспресс доставка в любую точку России;
- Помощь Конструкторского Отдела и консультации квалифицированных инженеров;
- Техническая поддержка проекта, помощь в подборе аналогов, поставка прототипов;
- Поставка электронных компонентов под контролем ВП;
- Система менеджмента качества сертифицирована по Международному стандарту ISO 9001;
- При необходимости вся продукция военного и аэрокосмического назначения проходит испытания и сертификацию в лаборатории (по согласованию с заказчиком);
- Поставка специализированных компонентов военного и аэрокосмического уровня качества (Xilinx, Altera, Analog Devices, Intersil, Interpoint, Microsemi, Actel, Aeroflex, Peregrine, VPT, Syfer, Eurofarad, Texas Instruments, MS Kennedy, Miteq, Cobham, E2V, MA-COM, Hittite, Mini-Circuits, General Dynamics и др.);

Компания «Океан Электроники» является официальным дистрибьютором и эксклюзивным представителем в России одного из крупнейших производителей разъемов военного и аэрокосмического назначения «**JONHON**», а так же официальным дистрибьютором и эксклюзивным представителем в России производителя высокотехнологичных и надежных решений для передачи СВЧ сигналов «**FORSTAR**».



JONHON

«**JONHON**» (основан в 1970 г.)

Разъемы специального, военного и аэрокосмического назначения:

(Применяются в военной, авиационной, аэрокосмической, морской, железнодорожной, горно- и нефтедобывающей отраслях промышленности)

«**FORSTAR**» (основан в 1998 г.)

ВЧ соединители, коаксиальные кабели,
кабельные сборки и микроволновые компоненты:

(Применяются в телекоммуникациях гражданского и специального назначения, в средствах связи, РЛС, а так же военной, авиационной и аэрокосмической отраслях промышленности).



Телефон: 8 (812) 309-75-97 (многоканальный)

Факс: 8 (812) 320-03-32

Электронная почта: ocean@oceanchips.ru

Web: <http://oceanchips.ru/>

Адрес: 198099, г. Санкт-Петербург, ул. Калинина, д. 2, корп. 4, лит. А