



Grove - Fingerprint Sensor

Release date : 9/20/2015

Version : 1.0

Wiki: [http://seeedstudio.com/wiki/Grove - Finger Print Sensor V1.0](http://seeedstudio.com/wiki/Grove_-_Finger_Print_Sensor_V1.0)

Bazaar: <http://www.seeedstudio.com/depot/Grove-Fingerprint-Sensor-p-1424.html>

Document Revision History

Revision	Date	Author	Description
1.0	Sep 21, 2015	Victor.He	Create file

Contents

Document Revision History	2
1. Introduction	2
2. Specification	3
3. Interface	4
4. Demonstration	5
5. Resource	10

Disclaimer

For physical injuries and possessions loss caused by those reasons which are not related to product quality, such as operating without following manual guide, natural disasters or force majeure, we take no responsibility for that.

Under the supervision of Seeed Technology Inc., this manual has been compiled and published which covered the latest product description and specification. The content of this manual is subject to change without notice.

Copyright

The design of this product (including software) and its accessories is under tutelage of laws. Any action to violate relevant right of our product will be penalized through law. Please consciously observe relevant local laws in the use of this product.

1. Introduction

The Finger Print Sensor is one optical fingerprint sensor which will make fingerprint detection and verification adding super simple. There's a high powered DSP chip AS601 that does the image rendering, calculation, feature-finding and searching. You can also enroll new fingers directly - up to 162 finger prints can be stored in the onboard FLASH memory. There's a red LED in the lens which will light up during taking photos so that you know its working condition. It is easy to use and by far the best fingerprint sensor you can get.



2. Specification

Supply voltage	3.6~6.0 V
Operating current(Max)	120 mA
Fingerprint imaging time	1.0 S
Match Mode:	Compare Mode 1:1
Search Mode	1:N
Storage capacity	162 templates
False Acceptance Rate	0.001% (Security level 3)
False Reject Rate	1.0% (Security level 3)
Baud rate	9600, 19200, 28800, 38400, 57600bps (default is 57600)
Interface	TTL Serial
Interface	TTL Serial

3. Interface

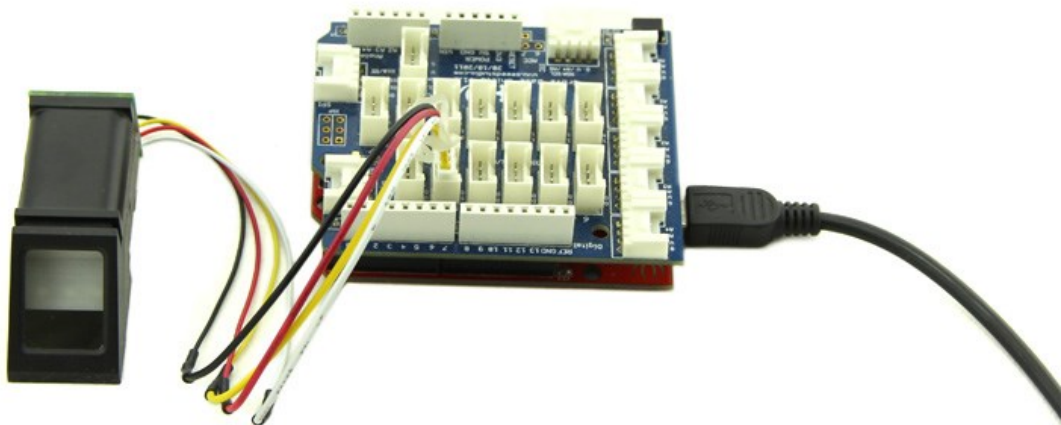
Pin number	Name	Type	Function Description
1	Vin	in	Positive Power Supply Input Terminal(Line color:Red)
2	TD	out	Serial data output, TTL logic levels(Line color: Yellow)
3	RD	in	Serial data input, TTL logic levels(Line color: White)
4	GND	-	Signal ground(Line color: Black)

4. Demonstration

The Finger Print Sensor module is typically used in safes - there's a high powered DSP chip that does the image rendering, calculation, feature-finding and searching. Connect to any microcontroller or system with TTL serial, and send packets of data to take photos, detect prints, hash and search. You can also enroll new fingers directly - up to 162 finger prints that can be stored in the onboard FLASH memory. There's a red LED in the lens which will light up during taking photos so that you know its working condition.

- Connect the Sensor to the Digital Port 2 of the [Grove - Base Shield](#).
- Plug the Grove - Base Shield into Arduino and connect Arduino to PC by using a USB cable.

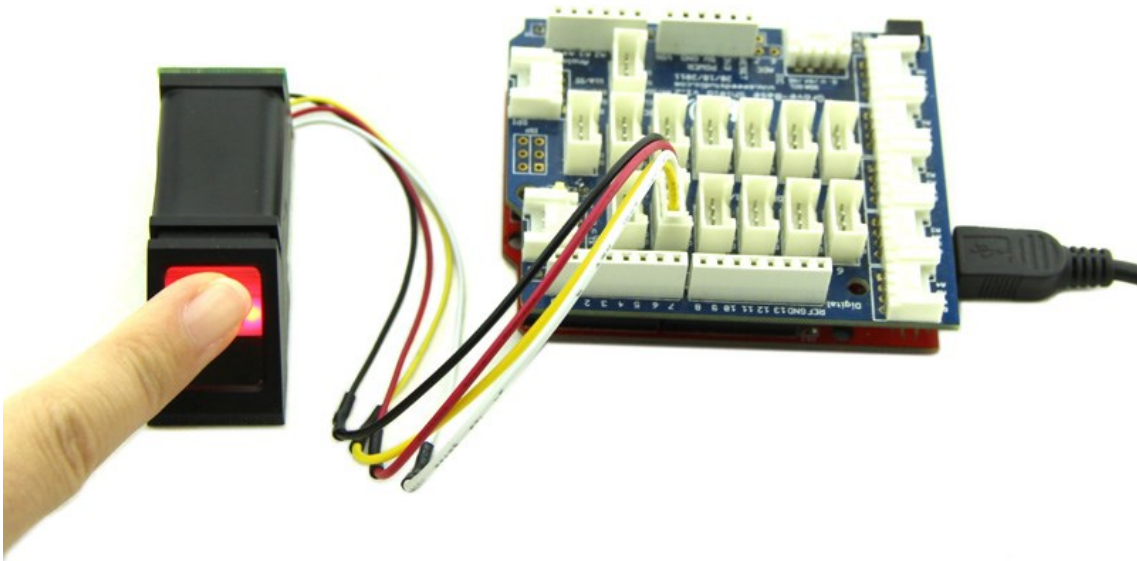
When you plug in the power, you can see the red LED blink which indicates the sensor is working.

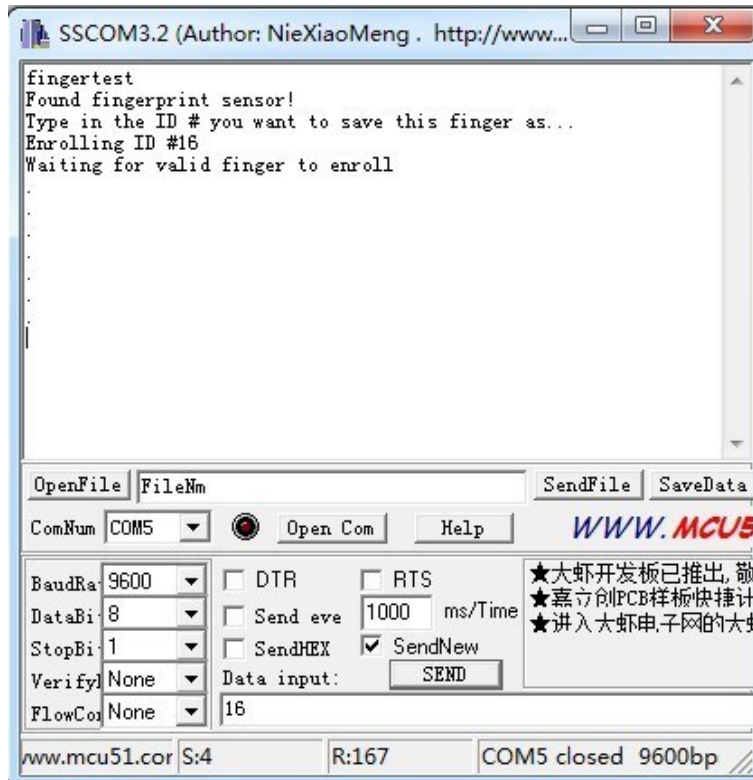


- Download the [Finger Print Sensor Library](#) and Unzip it into the libraries file of Arduino IDE by the path: `..\arduino-1.0.1\libraries`.

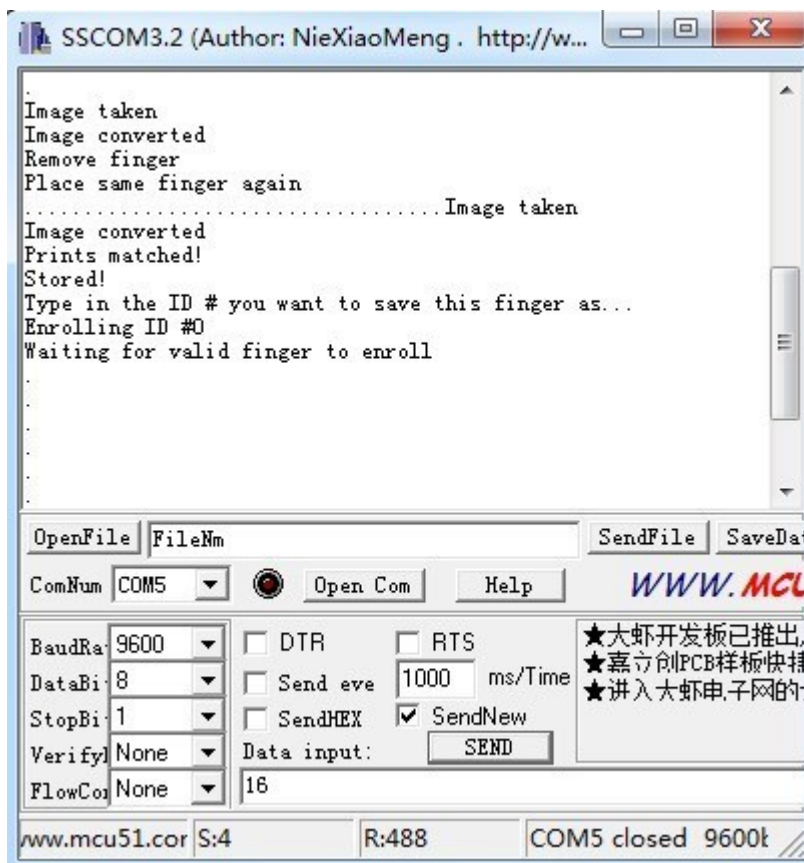
The library can enroll and search so it is perfect for any project. It can help you get running in under 10 minutes. There are basically two requirements for using the optical fingerprint sensor. First one, you'll need to enroll fingerprints - which means assigning ID #'s to each print so you can query them later. Once you've enrolled all your prints, you can easily 'search' the sensor, asking it to identify which ID (if any) has currently been photographed.

- Open the enroll code directly by the path: File -> Example ->FingerPrint->Enroll.
 - Upload the code into Arduino. Please click [here](#) if you do not know how to upload.
 - Startup Serial Tool and Select the ComNum and BuadRate used by the Arduino.
 - Select the "SendNew" option. Send the ID # you want to use. You can use up to 162 ID numbers.
- And it will ask you to press the finger to the sensor. At the moment, you should see the red LED blink.

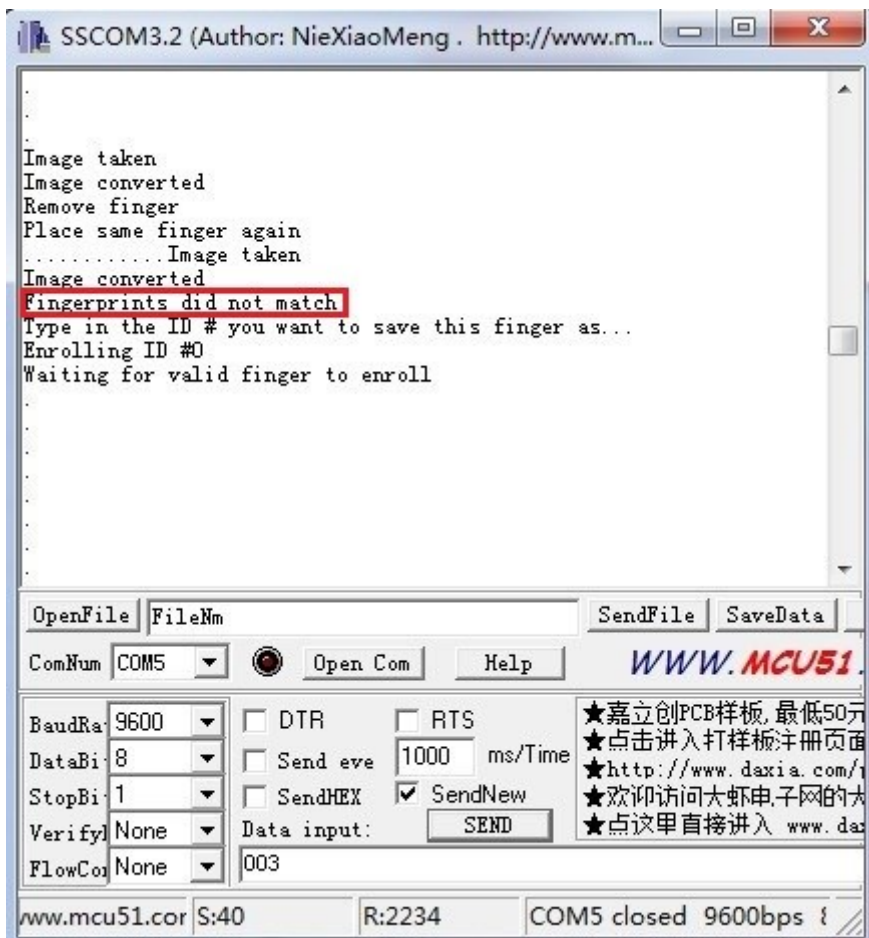




- If your press is OK, you could see the following message. You will then have to repeat the process, to get a second clean print. Use the same finger! On success you will get notice.

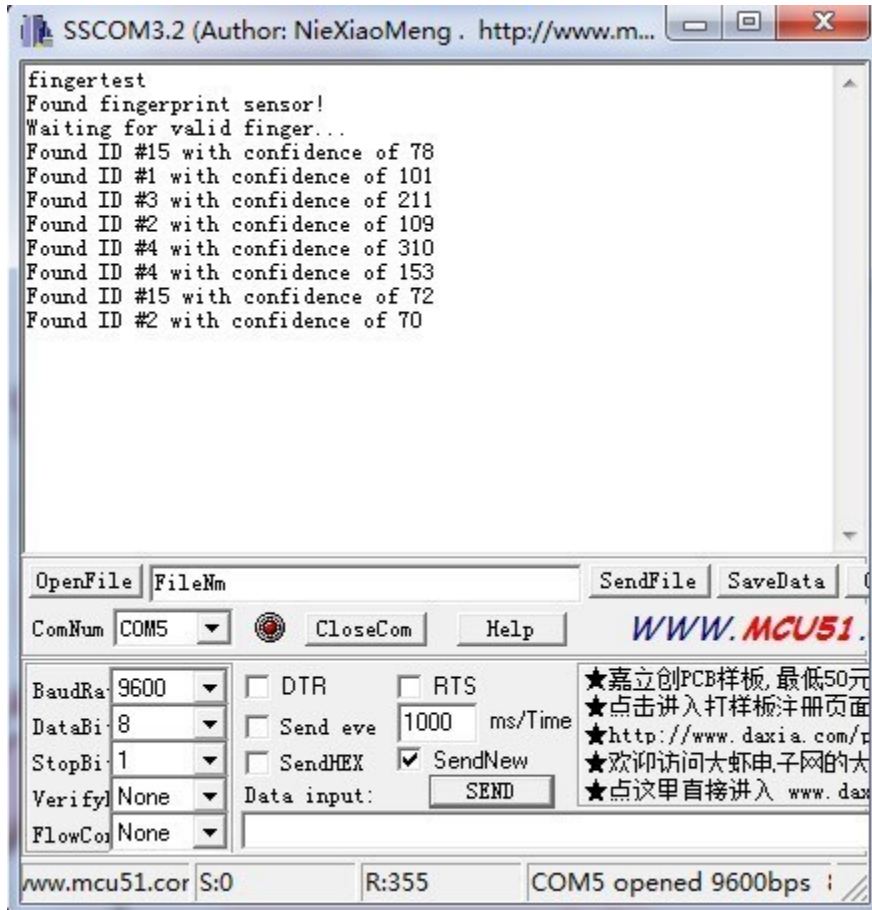


- If there's a problem such as a bad print or image, you'll have to do it again.



Once you have the finger enrolled, it's a good idea to do a quick test to make sure it can be found in the database.

- Open the demo code: fingerprint and upload it.
- When prompted, press a different/same finger to the sensor. If it is the same finger, you should get a match with the ID # as show below.



- If it is not a finger in the database, this serial port will output nothing.

5. Resource

[Finger Print Sensor Library File](#)

[Finger Print Sensor Datasheet](#)

Компания «Океан Электроники» предлагает заключение долгосрочных отношений при поставках импортных электронных компонентов на взаимовыгодных условиях!

Наши преимущества:

- Поставка оригинальных импортных электронных компонентов напрямую с производств Америки, Европы и Азии, а так же с крупнейших складов мира;
- Широкая линейка поставок активных и пассивных импортных электронных компонентов (более 30 млн. наименований);
- Поставка сложных, дефицитных, либо снятых с производства позиций;
- Оперативные сроки поставки под заказ (от 5 рабочих дней);
- Экспресс доставка в любую точку России;
- Помощь Конструкторского Отдела и консультации квалифицированных инженеров;
- Техническая поддержка проекта, помощь в подборе аналогов, поставка прототипов;
- Поставка электронных компонентов под контролем ВП;
- Система менеджмента качества сертифицирована по Международному стандарту ISO 9001;
- При необходимости вся продукция военного и аэрокосмического назначения проходит испытания и сертификацию в лаборатории (по согласованию с заказчиком);
- Поставка специализированных компонентов военного и аэрокосмического уровня качества (Xilinx, Altera, Analog Devices, Intersil, Interpoint, Microsemi, Actel, Aeroflex, Peregrine, VPT, Syfer, Eurofarad, Texas Instruments, MS Kennedy, Miteq, Cobham, E2V, MA-COM, Hittite, Mini-Circuits, General Dynamics и др.);

Компания «Океан Электроники» является официальным дистрибьютором и эксклюзивным представителем в России одного из крупнейших производителей разъемов военного и аэрокосмического назначения «JONHON», а так же официальным дистрибьютором и эксклюзивным представителем в России производителя высокотехнологичных и надежных решений для передачи СВЧ сигналов «FORSTAR».



JONHON

«JONHON» (основан в 1970 г.)

Разъемы специального, военного и аэрокосмического назначения:

(Применяются в военной, авиационной, аэрокосмической, морской, железнодорожной, горно- и нефтедобывающей отраслях промышленности)

«FORSTAR» (основан в 1998 г.)

ВЧ соединители, коаксиальные кабели, кабельные сборки и микроволновые компоненты:

(Применяются в телекоммуникациях гражданского и специального назначения, в средствах связи, РЛС, а так же военной, авиационной и аэрокосмической отраслях промышленности).



Телефон: 8 (812) 309-75-97 (многоканальный)

Факс: 8 (812) 320-03-32

Электронная почта: ocean@oceanchips.ru

Web: <http://oceanchips.ru/>

Адрес: 198099, г. Санкт-Петербург, ул. Калинина, д. 2, корп. 4, лит. А