

Reset Timer IC for Mobile Equipment

NO.EA-418-180810

OVERVIEW

The R3201L is a reset timer IC for mobile equipment featuring a shipping mode. This device can detect an external adaptor by the TAIN input signal.

KEY BENEFITS

- Setting shipping mode provides to improve the battery's consumption at shipping a terminal equipment.
- Despite its extensive functions, achieve 0.35 μA low supply current.

KEY SPECIFICATIONS

- Operating Voltage Range (Max. Rating): 2.2 V to 5.5 V (12.0V)
- Supply Current (at Standby / Shipping mode): Typ.0.35 μA
- Operating Temperature Range: -40°C to 85°C
- Reset Request Time: Refer to *Optional Function* for details.
- Reset Request Time Accuracy: $\pm 10\%$
- Reset Time: Typ.0.4s
- Reset Time Accuracy: $\pm 10\%$
- Shipping Mode Entry Delay Time (Input pin: OFF): Typ.15 s
- Shipping Mode Entry Command (Input pin: OFF): 5 cycles
- Shipping Mode Exit Delay Time (Input pin: RST0): Typ.2 s
- Output Type (Output pin: SRO, nSRO, DCHGx): Nch. Open Drain and CMOS

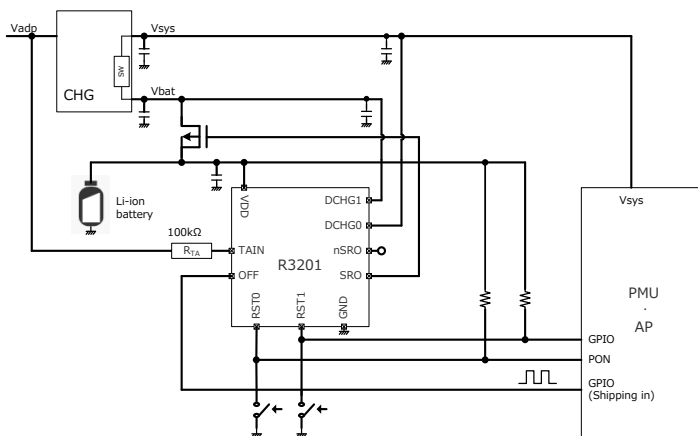
OPTIONAL FUNCTION

Product Name	Package
R3201Lxxx * -E2	QFN014018-10

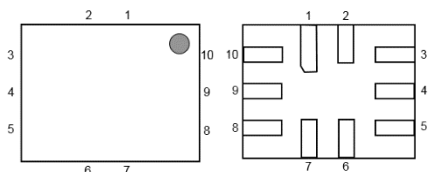
xxx: Specify a delay time for reset signal.

xxx	Reset Request Time
001	8 s
002	10 s
003	12 s
004	16 s

TYPICAL APPLICATIONS



PACKAGE



QFN014018-10

1.40mm x 1.80 mm,
t = 0.4 mm (Max.)

APPLICATIONS

- Battery-powered mobile equipments
- Audio, Home-use electrical medical, and Image processing devices
- Mobile phone, Smartphone, and Wearable devices
- Portable games

R3201L

NO.EA-418-180810

SELECTION GUIDE

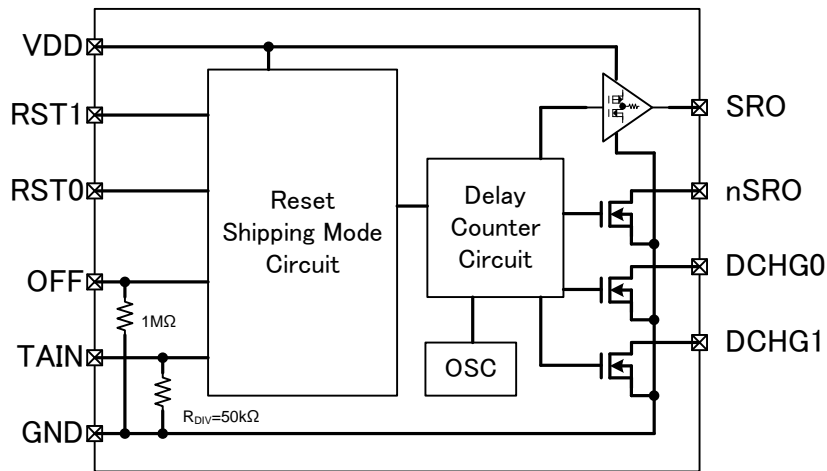
Product Name	Package	Quantity per Reel	Pb Free	Halogen Free
R3201Lxxx*-E2	QFN014018-10	5,000 pcs	Yes	Yes

xxx : Reset request time

- 001: 8 s
- 002: 10 s
- 003: 12 s
- 004: 16 s

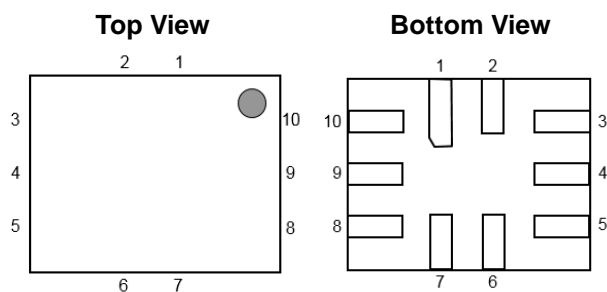
* : Output Type
A: Nch Open-drain

BLOCK DIAGRAM



R3201L00xA Block Diagram

PIN DESCRIPTIONS



R3201L (QFN014018-10) Pin Configuration

R3201L Pin Descriptions

Pin No.	Symbol	Description
1	DCHG1	Discharge output pin 1 (Nch. open-drain output) ⁽¹⁾
2	TAIN	Adaptor insert detection pin
3	VDD	Power supply input pin
4	RST0	Reset request input pin 0, Active-low
5	RST1	Reset request input pin 1 , Active-low
6	OFF	Shipping mode enter command input pin ⁽²⁾
7	GND	Ground pin
8	SRO	CMOS output pin, Active-high
9	nSRO	Nch open drain output pin, Active-low ⁽³⁾
10	DCHG0	Discharge output pin 0 (Nch. open-drain output) ⁽¹⁾

⁽¹⁾ The DCHG0 and DCHG1 pins must be connected to GND or left floating if it is not used.

⁽²⁾ The OFF pin must be connected to GND if it is not used (shipping mode is not used).

⁽³⁾ The nSRO pin must be connected to GND or left floating if it is not used.

R3201L

NO.EA-418-180810

ABSOLUTE MAXIMUM RATINGS

Absolute Maximum Ratings

Symbol	Item	Rating	Unit
V _{DD}	Supply Voltage	GND -0.3 to 12	V
V _{RST0}	RST0 Pin Input Voltage (Input Pin-0)	GND -0.3 to 12	V
V _{RST1}	RST1 Pin Input Voltage (Input Pin-1)	GND -0.3 to 12	V
V _{SRO}	SRO Pin Output Voltage (Reset Signal Output Pin-0)	GND -0.3 to V _{DD} +0.3	V
V _{nSRO}	nSRO Pin Output Voltage (Reset Signal Output Pin-1)	GND -0.3 to 6	V
V _{TAIN}	TAIN Pin Input Voltage ⁽¹⁾	GND -0.3 to 12	V
V _{OFF}	OFF Pin Input Voltage	GND -0.3 to 6	V
V _{DCHG0}	DCHG0 Pin Output Voltage	GND -0.3 to 12	V
V _{DCHG1}	DCHG1 Pin Output Voltage	GND -0.3 to 12	V
P _D	Power Dissipation ⁽²⁾ (QFN014018-10, EDEC STD.51-7 Test Land Pattern)	625	mW
T _j	Junction Temperature Range	-40 to 125	°C
T _{stg}	Storage Temperature Range	-55 to 125	°C

ABSOLUTE MAXIMUM RATINGS

Electronic and mechanical stress momentarily exceeded absolute maximum ratings may cause the permanent damages and may degrade the life time and safety for both device and system using the device in the field. The functional operation at or over these absolute maximum ratings are not assured.

RECOMMENDED OPERATING CONDITIONS

Recommended Operating Conditions

Symbol	Item	Rating	Unit
V _{DD}	Supply Voltage	2.2 to 5.5	V
T _a	Operating Temperature Range	-40 to 85	°C

RECOMMENDED OPERATING CONDITIONS

All of electronic equipment should be designed that the mounted semiconductor devices operate within the recommended operating conditions. The semiconductor devices cannot operate normally over the recommended operating conditions, even if when they are used over such conditions by momentary electronic noise or surge. And the semiconductor devices may receive serious damage when they continue to operate over the recommended operating conditions. The device electrical characteristics up to 125°C are evaluated at preproduction.

⁽¹⁾ Refer to *TAIN Test Circuit* information.

⁽²⁾ Refer to *POWER DISSIPATION* for detailed information.

ELECTRICAL CHARACTERISTICS

The specifications surrounded by are guaranteed by design engineering at $-40^{\circ}\text{C} \leq T_a \leq 85^{\circ}\text{C}$.

R3201L Electrical Characteristics

(Ta = 25°C)

Symbol	Item	Conditions	Min.	Typ.	Max.	Unit
I _{SS1}	Supply current 1 ⁽¹⁾	V _{DD} = 4.0 V (at standby)		0.35	1.0	μA
I _{SS2}	Supply current 2 ⁽²⁾	V _{DD} = 4.0V (at active reset counter & reset signal output)		3	10	μA
I _{SS3}	Supply current 3 ⁽³⁾	V _{DD} = 4.0V (at active after reset signal output)		0.4	1.7	μA
V _{IL1}	RST0/RST1 input voltage, low				0.3	V
V _{IH1}	RST0/RST1 input voltage, high		1.15		V_{DD}	V
V _{IL2}	OFF input voltage, low				0.4	V
V _{IH2}	OFF input voltage, high		1.0		5.5	V
I _{IIL}	OFF (pull-down pin) input leakage current, low	V _I = 0 V	-0.1		0.1	μA
I _{IHH}	OFF (pull-down pin) input leakage current, high	V _{DD} = 5.5 V , V _I = V _{DD}		5.5		μA
T _{DEB}	Debounce time of RST0/RST1			10		msec

■ RESET Operation

T _R	Reset request time	R3201L001	7.2	8	8.8	sec
		R3201L002	9	10	11	
		R3201L003	10.8	12	13.2	
		R3201L004	14.4	16	17.6	
T _D	Reset time		0.36	0.4	0.44	sec
T _O	SRO output pin slew rate time (rising and falling time)	V _{DD} = 4 V, Q _g = 20nC	1	2	3	msec
T _{DD}	Discharge active of DCHG0/1 delay time		3	4	5	msec
I _D	Discharge current of DCHG0/1	V _{DD} = V _{DCHG0,1} = 4 V		50		mA
V _{OL}	nSRO output voltage, low	I _{OL} = 2 mA			0.3	V
I _{LEAKO}	nSRO output leakage current	V _{DD} = 5.5 V			0.1	μA

⁽¹⁾ Supply current when the device is active and waiting for the reset input.

⁽²⁾ Supply current when the RST0 and RST1 input pins are low and the timer operation is running.

⁽³⁾ Supply current after the automatic cancellation of reset signal following the completion of timer operation and the output of rest signal.

R3201L

NO.EA-418-180810

The specifications surrounded by are guaranteed by design engineering at $-40^{\circ}\text{C} \leq T_a \leq 85^{\circ}\text{C}$.**R3201L Electrical Characteristics (Continued)**

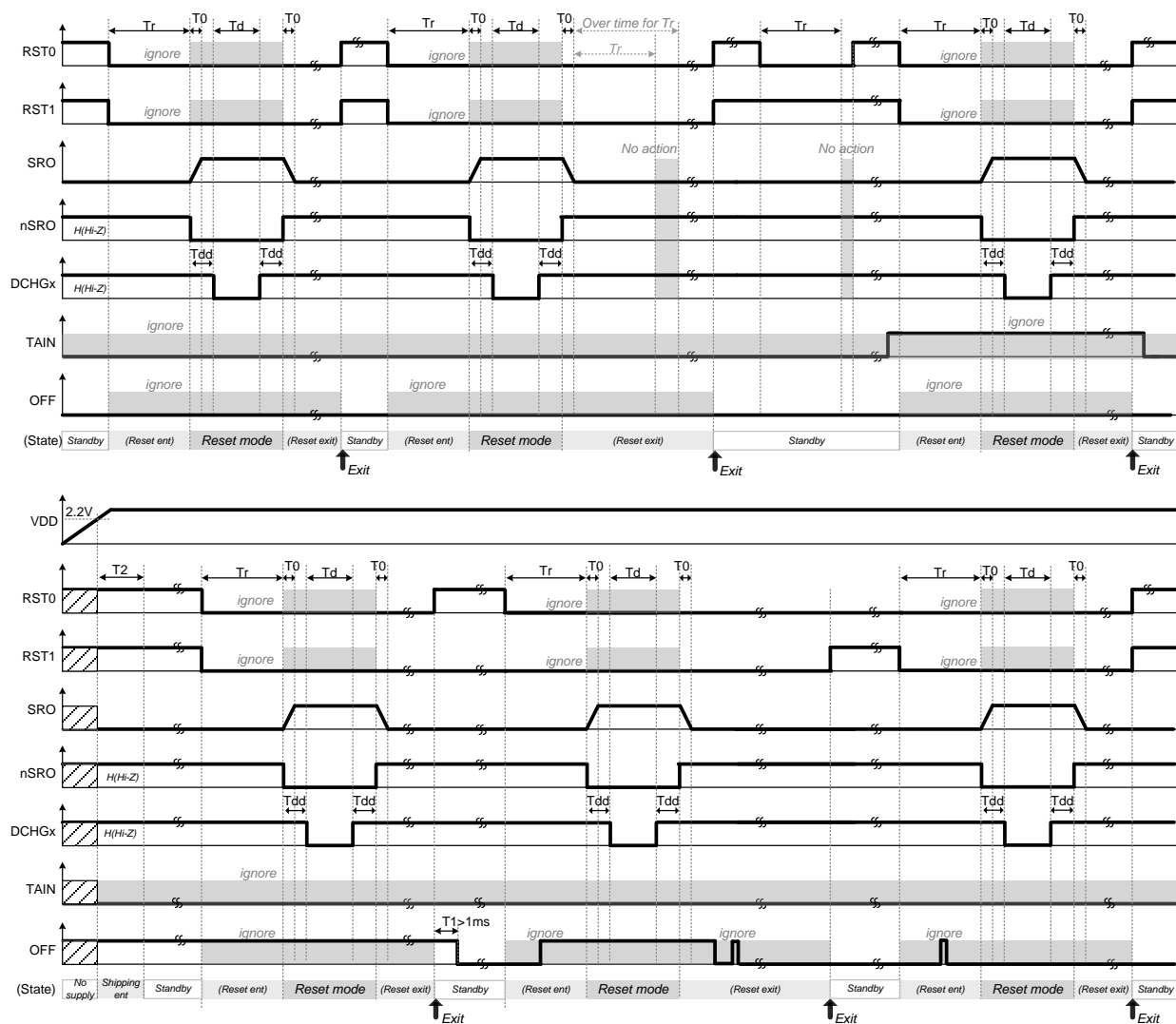
(Ta = 25°C)

Symbol	Item	Conditions	Min.	Typ.	Max.	Unit
■ TAIN Detect Operation						
V _{TA_DET}	Input detection voltage for R _{TA}	R _{TA} = 100kΩ, R _{DIV} = 50kΩ	2		4.4	V
V _{TA_RELEASE}	Input release voltage for R _{TA}	R _{TA} = 100kΩ, R _{DIV} = 50kΩ	1		3.4	V
V _{TA_HYS}	Input hysteresis voltage for R _{TA}	R _{TA} = 100kΩ, R _{DIV} = 50kΩ	0.8			V
T _{TA}	TAIN input detection delay Time		20	50	100	ms
■ Shipping Mode Operation						
T _S	Shipping mode entry delay time		12	15	18	sec
N _{OFF}	Shipping mode entry command			5		Cycle
T ₁	HIGH and LOW hold time of OFF-pin input pulse		1	2		msec
T ₂	Entry limited time at shipping mode	Total 5 pulses Time of OFF-pin input pulse			100	msec
T ₃	Shipping mode exit delay time		1.6	2	2.4	sec
I _{OFF}	Supply current at shipping mode	V _{DD} = 4.0 V		0.35	1.0	μA

All test items listed under *ELECTRICAL CHARACTERISTICS* are done under the pulse load condition (T_j ≈ T_a = 25°C) except Supply Current 2.

THEORY OF OPERATION

Reset Operation-1



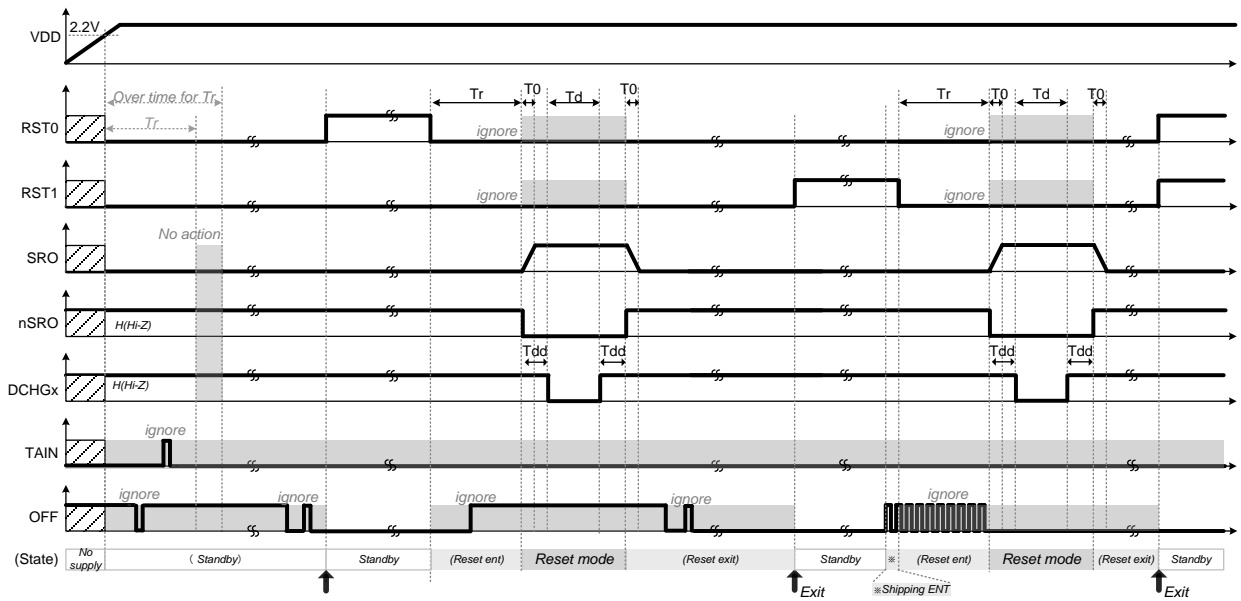
Reset Timing Chart 1

1. When both active-low input pins (RST0 and RST1) become Low level, Reset operation starts.
2. After the period of T_r time, R3201L enters into Reset mode.
3. If RST0 or RST1 becomes High level before Reset mode, reset operation will be cancelled.
4. Once the R3201L finishes the Reset mode, it keep same state (Reset exit state) as long as both RST0 and RST1 remain Low level.
5. In order to move to Standby, High level input is needed to RST0 or RST1.
6. The debounce time of RST0 and RST1 (L→H, H→L) is 10 [msec].

R3201L

NO.EA-418-180810

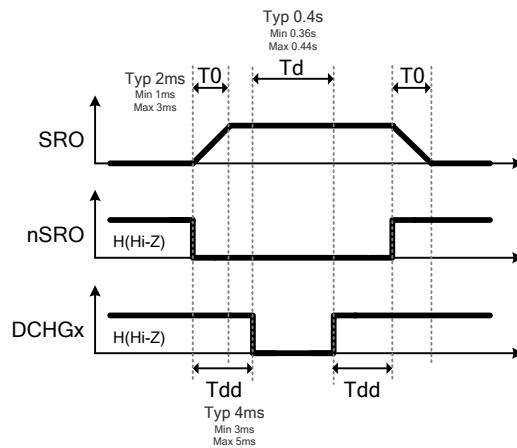
Reset Operation-2



Reset Timing Chart 2

SRO/ nSRO/ DCHGx Operation

SRO slew rate time, nSRO and Discharge ON/OFF timing (DCHGx) follow;

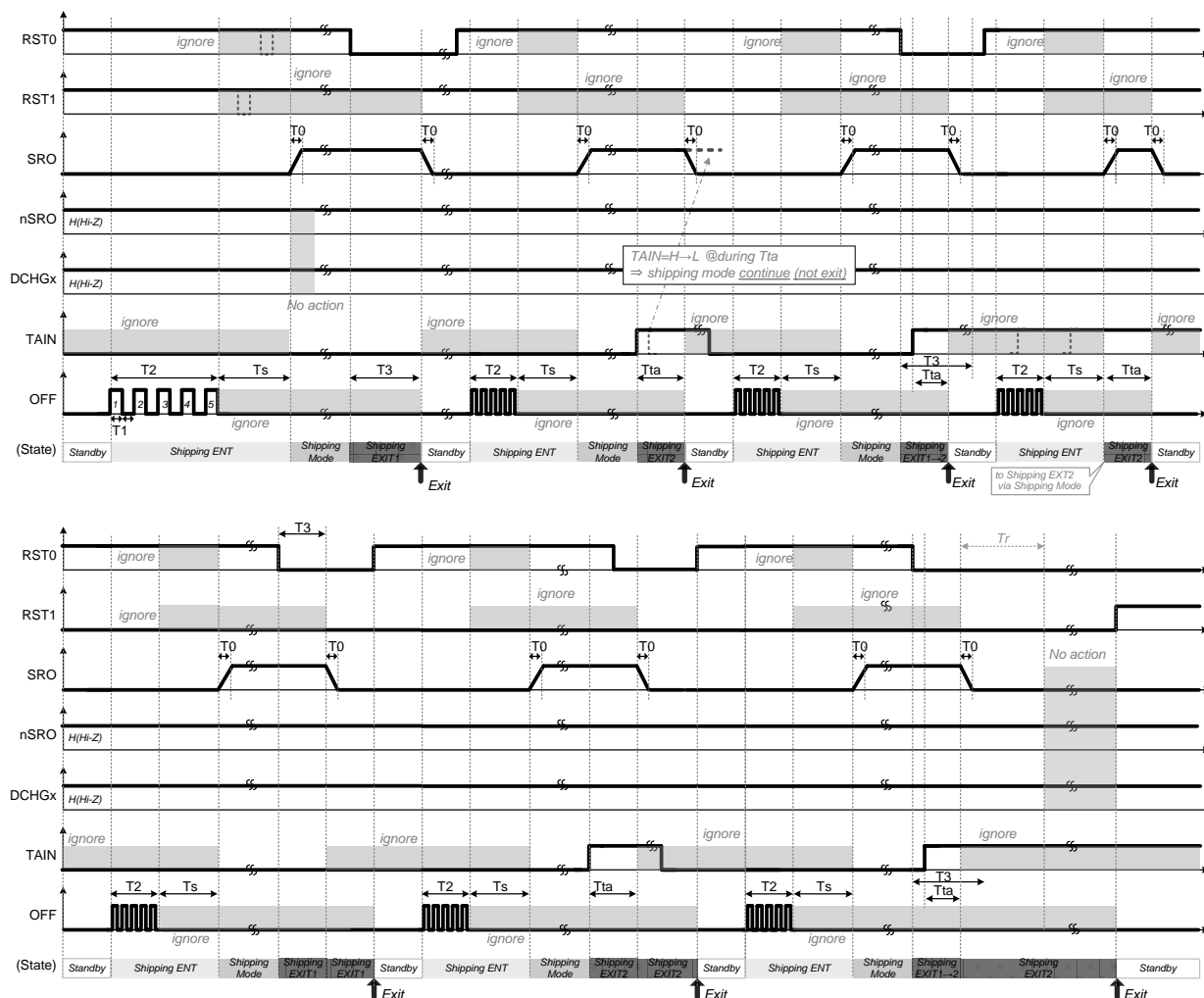


$Q_g = 20 \text{ nC}$ (external P-MOSFET @SRO pin control)

$$T_0 [s] = (Q_g / V_{DD}) \times (132k[\Omega]) \times 3 \quad \text{※}132k\Omega \cdots IC \text{ internal resistance}$$

SRO/ nSRO/ DCHGx Timing

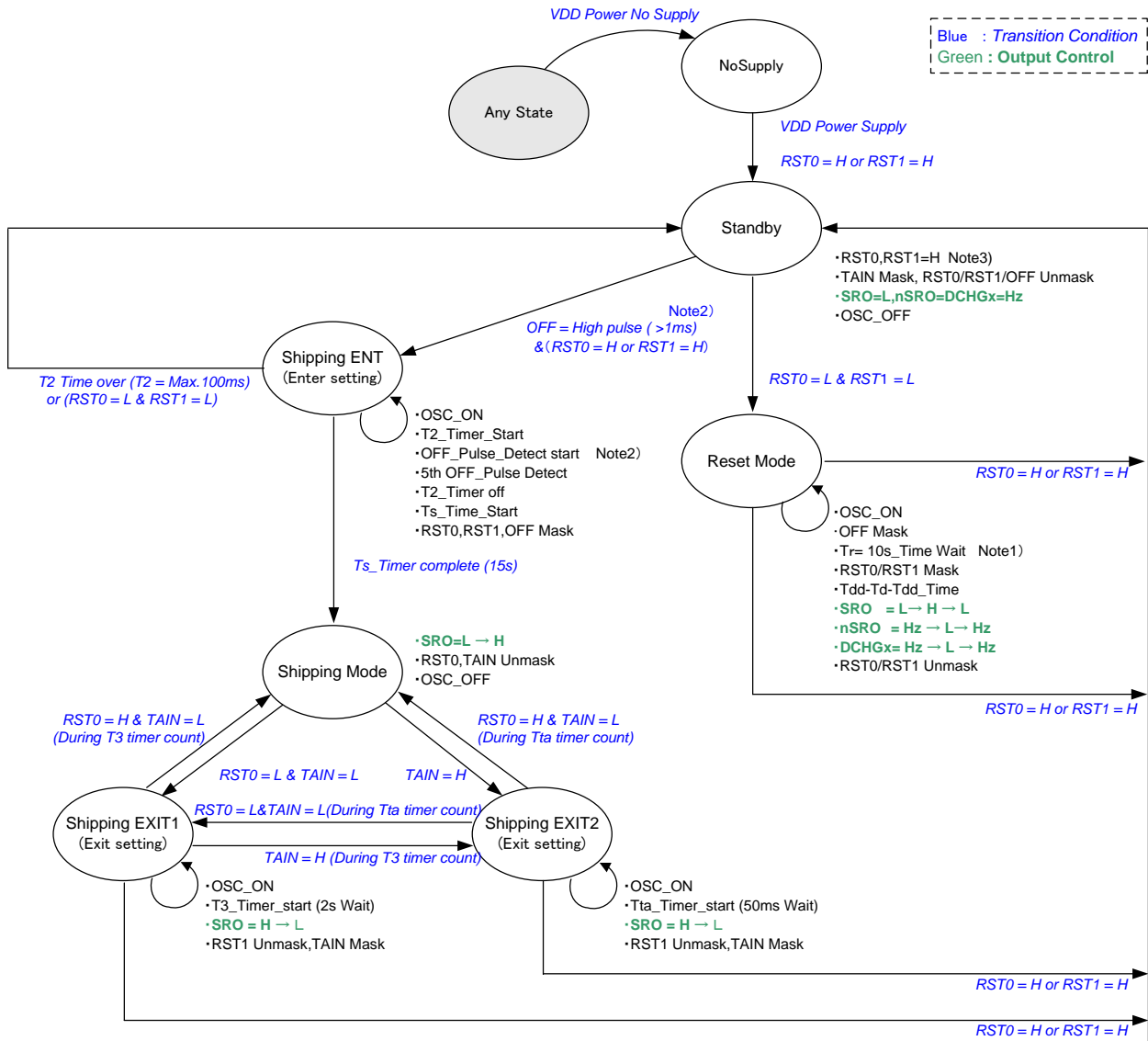
Shipping Mode Operation



Shipping Mode Timing Chart

1. If High Pulse to OFF-pin is input, when RST0 or RST1 input pins are High level, Shipping ENT starts.
2. During the period of T2 time, if both of RST0 and RST1 input pins become Low level, Shipping ENT stops, and Reset operation starts.
3. When the 5th Pulse input of OFF-pin (N_{OFF}) is NOT inputted until T2 time, R3201L is NOT moved to the shipping mode by lack of the shipping mode setting request.
4. The setting condition priority of the shipping mode exit is higher TAIN detection (R_{TA} input > min 4V) than RST0=L during T3 time.
5. The debounce time of RST0 and RST1 (L→H, H→L) is 10 [msec].

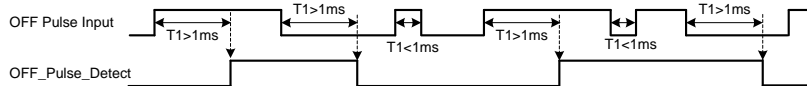
State Diagram



Note1) 8s, 10s, 12s, 16s code selectable option

Note2) OFF input pin supports debounce function. The initial value in the debounce circuit is "OFF=L" at Power ON.

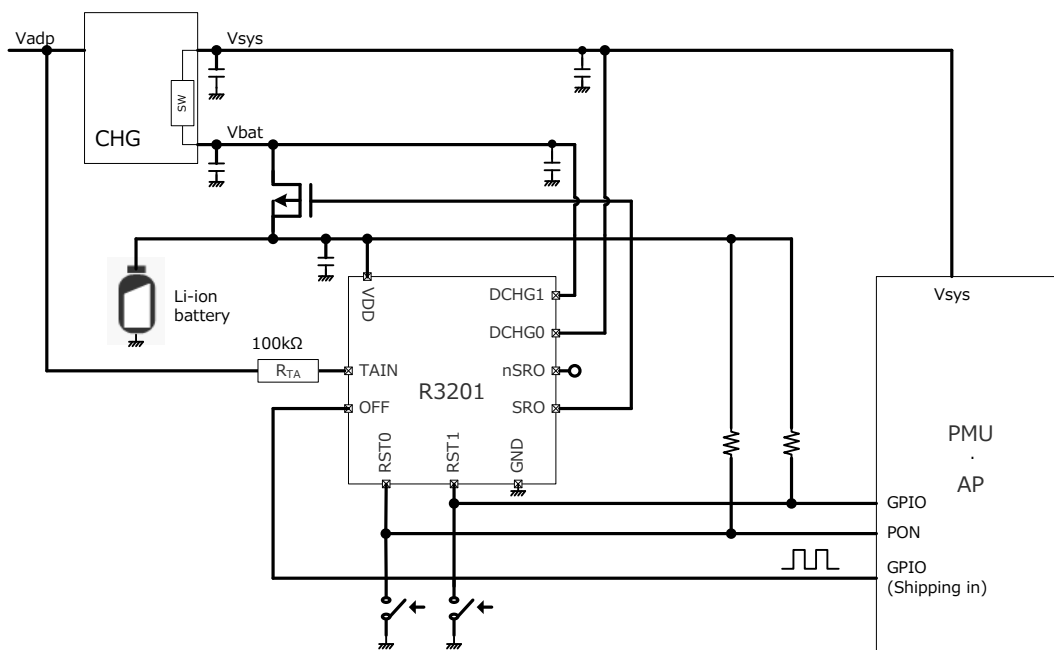
Input pulse width of OFF pin must be at least T1 time (min.1ms). If the pulse width is shorter than T1 time, R3201x may not be able to recognize pulse input. When the 5th Pulse input of OFF-pin is not inputted by T2 time, R3201x is not moved to the shipping mode by lack of the shipping mode setting request.



Note3) RST0/RST1 input pins support debounce function. Debounce circuit for RST0/RST1 is reset on transition to Standby state (except from Shipping ENT state). Initial values of debounce circuit are "H".

APPLICATION INFORMATION

Typical Application Circuit



R3201L Typical Application Circuit

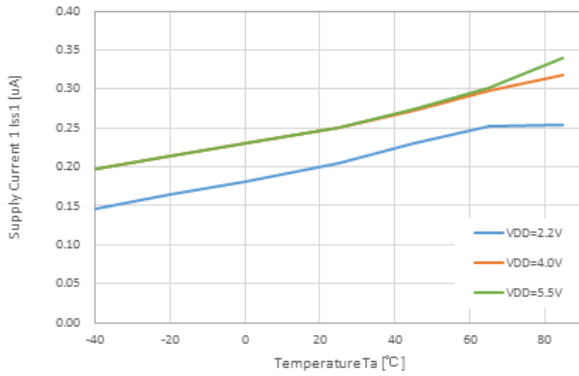
R3201L

NO.EA-418-180810

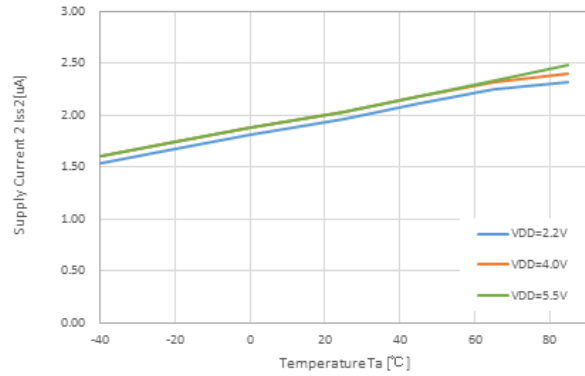
TYPICAL CHARACTERISTICS

Note: Typical Characteristics are intended to be used as reference data, they are not guaranteed.

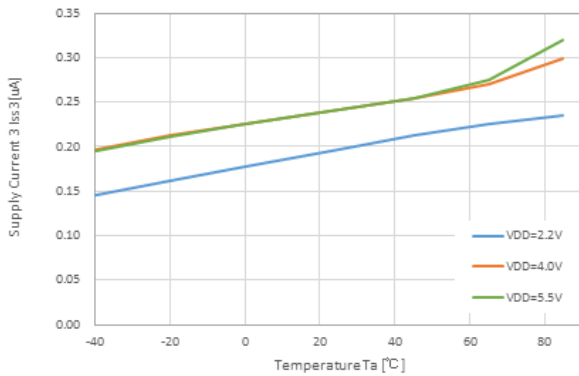
1) Supply Current 1
R3201Lxxx



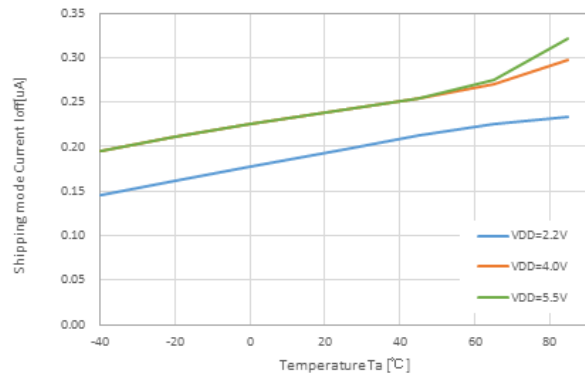
2) Supply Current 2
R3201Lxxx



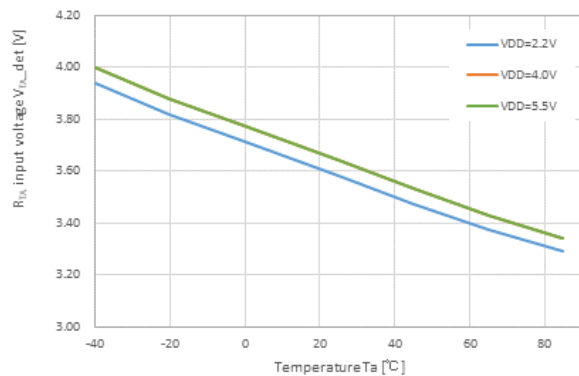
3) Supply Current 3
R3201Lxxx



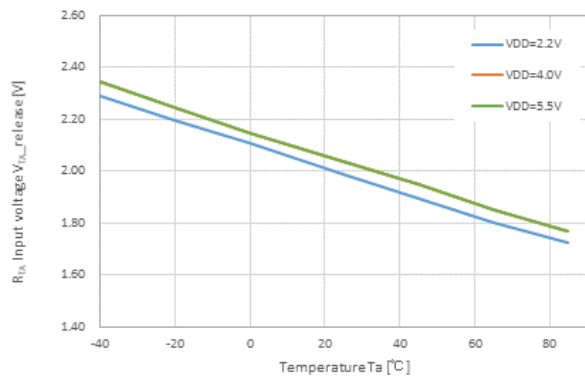
4) Supply Current at Shipping Mode
R3201Lxxx



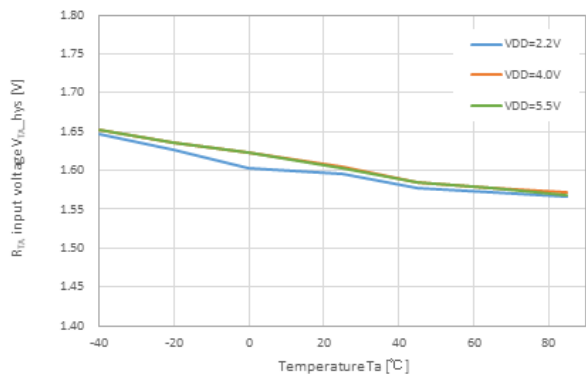
5) R_{TA} Input Detection Voltage
R3201Lxxx



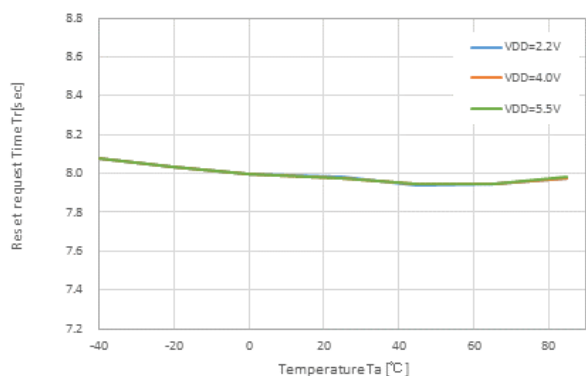
6) R_{TA} Input Release Voltage
R3201Lxxx



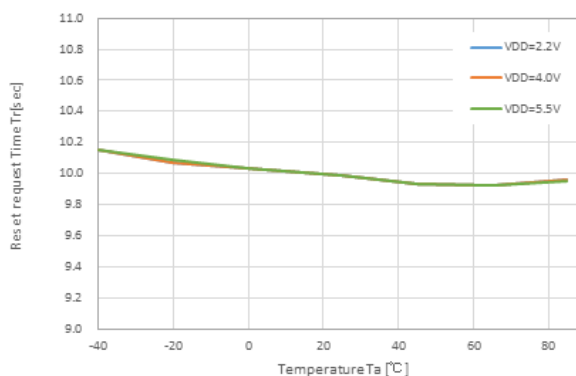
7) R_{TA} Input Hysteresis Voltage
R3201Lxxx



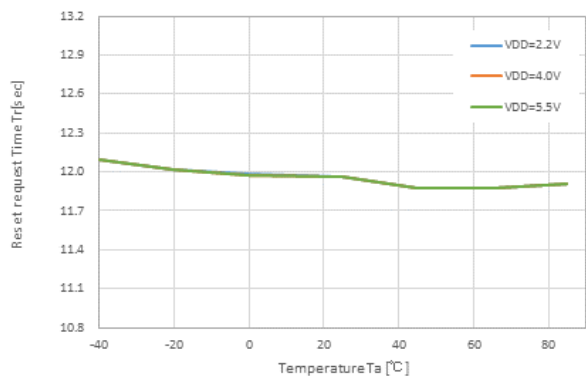
8) Reset Request Time
R3201Lxx1(8s)



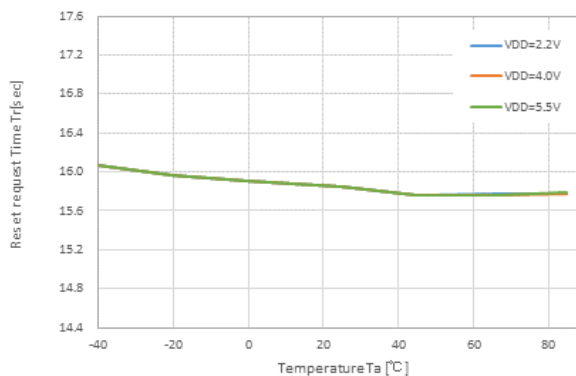
R3201Lxx2(10s)



R3201Lxx3(12s)



R3201Lxx4(16s)



The power dissipation of the package is dependent on PCB material, layout, and environmental conditions. The following measurement conditions are based on JEDEC STD. 51-7.

Measurement Conditions

Item	Measurement Conditions
Environment	Mounting on Board (Wind Velocity = 0 m/s)
Board Material	Glass Cloth Epoxy Plastic (Four-Layer Board)
Board Dimensions	76.2 mm × 114.3 mm × 0.8 mm
Copper Ratio	Outer Layer (First Layer): Less than 95% of 50 mm Square Inner Layers (Second and Third Layers): Approx. 100% of 50 mm Square Outer Layer (Fourth Layer): Approx. 100% of 50 mm Square
Through-holes	φ 0.3 mm × 36 pcs

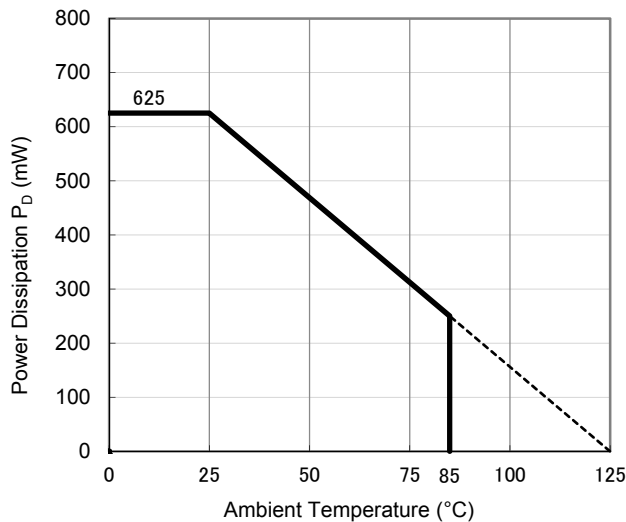
Measurement Result

(Ta = 25°C, Tjmax = 125°C)

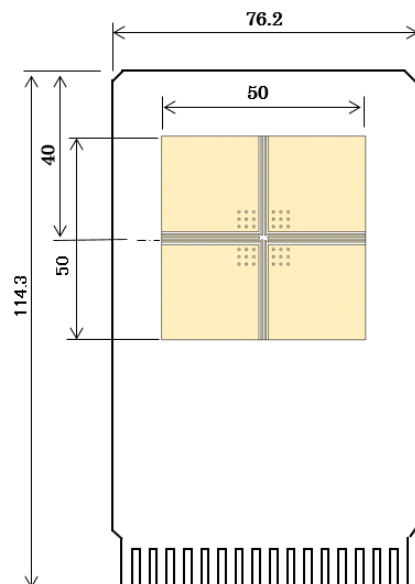
Item	Measurement Result
Power Dissipation	625 mW
Thermal Resistance (θja)	θja = 160°C/W
Thermal Characterization Parameter (ψjt)	ψjt = 76°C/W

θja: Junction-to-Ambient Thermal Resistance

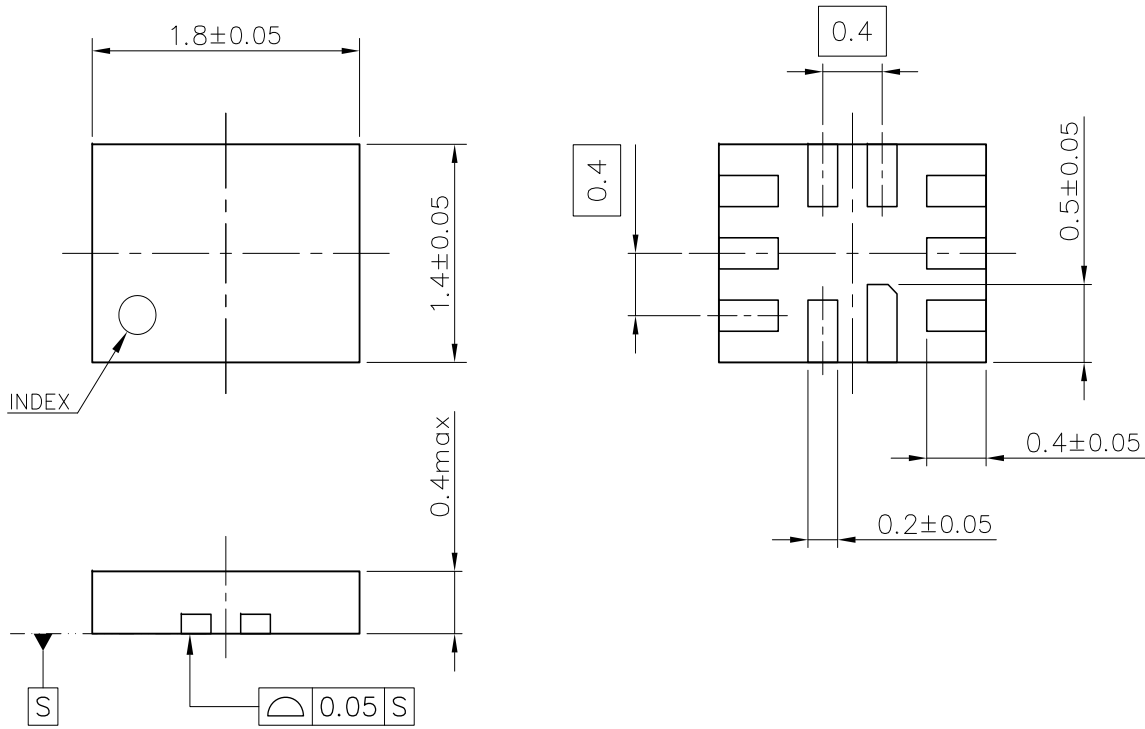
ψjt: Junction-to-Top Thermal Characterization Parameter



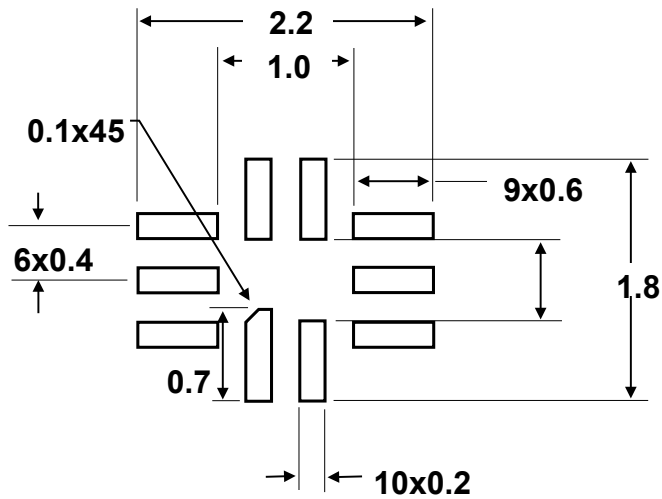
Power Dissipation vs. Ambient Temperature



Measurement Board Pattern



QFN014018-10 Package Dimensions (Unit: mm)



QFN014018-10 Recommended Land Pattern (Unit: mm)



1. The products and the product specifications described in this document are subject to change or discontinuation of production without notice for reasons such as improvement. Therefore, before deciding to use the products, please refer to Ricoh sales representatives for the latest information thereon.
2. The materials in this document may not be copied or otherwise reproduced in whole or in part without prior written consent of Ricoh.
3. Please be sure to take any necessary formalities under relevant laws or regulations before exporting or otherwise taking out of your country the products or the technical information described herein.
4. The technical information described in this document shows typical characteristics of and example application circuits for the products. The release of such information is not to be construed as a warranty of or a grant of license under Ricoh's or any third party's intellectual property rights or any other rights.
5. The products listed in this document are intended and designed for use as general electronic components in standard applications (office equipment, telecommunication equipment, measuring instruments, consumer electronic products, amusement equipment etc.). Those customers intending to use a product in an application requiring extreme quality and reliability, for example, in a highly specific application where the failure or misoperation of the product could result in human injury or death (aircraft, spacevehicle, nuclear reactor control system, traffic control system, automotive and transportation equipment, combustion equipment, safety devices, life support system etc.) should first contact us.
6. We are making our continuous effort to improve the quality and reliability of our products, but semiconductor products are likely to fail with certain probability. In order to prevent any injury to persons or damages to property resulting from such failure, customers should be careful enough to incorporate safety measures in their design, such as redundancy feature, fire containment feature and fail-safe feature. We do not assume any liability or responsibility for any loss or damage arising from misuse or inappropriate use of the products.
7. Anti-radiation design is not implemented in the products described in this document.
8. The X-ray exposure can influence functions and characteristics of the products. Confirm the product functions and characteristics in the evaluation stage.
9. WLCSP products should be used in light shielded environments. The light exposure can influence functions and characteristics of the products under operation or storage.
10. There can be variation in the marking when different AOI (Automated Optical Inspection) equipment is used. In the case of recognizing the marking characteristic with AOI, please contact Ricoh sales or our distributor before attempting to use AOI.
11. Please contact Ricoh sales representatives should you have any questions or comments concerning the products or the technical information.



Ricoh is committed to reducing the environmental loading materials in electrical devices with a view to contributing to the protection of human health and the environment.

Ricoh has been providing RoHS compliant products since April 1, 2006 and Halogen-free products since April 1, 2012.

RICOH RICOH ELECTRONIC DEVICES CO., LTD.

<https://www.e-devices.ricoh.co.jp/en/>

Sales & Support Offices

Ricoh Electronic Devices Co., Ltd.

Shin-Yokohama Office (International Sales)

2-3, Shin-Yokohama 3-chome, Kohoku-ku, Yokohama-shi, Kanagawa, 222-8530, Japan
Phone: +81-50-3814-7687 Fax: +81-45-474-0074

Ricoh Americas Holdings, Inc.

675 Campbell Technology Parkway, Suite 200 Campbell, CA 95008, U.S.A.
Phone: +1-408-610-3105

Ricoh Europe (Netherlands) B.V.

Semiconductor Support Centre

Prof. W.H. Keesomlaan 1, 1183 DJ Amstelveen, The Netherlands
Phone: +31-20-5474-309

Ricoh International B.V. - German Branch

Semiconductor Sales and Support Centre

Oberrather Strasse 6, 40472 Düsseldorf, Germany
Phone: +49-211-6546-0

Ricoh Electronic Devices Korea Co., Ltd.

3F, Haesung Bldg, 504, Teheran-ro, Gangnam-gu, Seoul, 135-725, Korea
Phone: +82-2-2135-5700 Fax: +82-2-2051-5713

Ricoh Electronic Devices Shanghai Co., Ltd.

Room 403, No.2 Building, No.690 Bibo Road, Pu Dong New District, Shanghai 201203,
People's Republic of China
Phone: +86-21-5027-3200 Fax: +86-21-5027-3299

Ricoh Electronic Devices Shanghai Co., Ltd.

Shenzhen Branch

1205, Block D(Jinlong Building), Kingkey 100, Hongbao Road, Luohu District,
Shenzhen, China
Phone: +86-755-8348-7600 Ext 225

Ricoh Electronic Devices Co., Ltd.

Taipei office

Room 109, 10F-1, No.51, Hengyang Rd., Taipei City, Taiwan
Phone: +886-2-2313-1621/1622 Fax: +886-2-2313-1623

Mouser Electronics

Authorized Distributor

Click to View Pricing, Inventory, Delivery & Lifecycle Information:

[Ricoh Electronics:](#)

[R3201L004A-E2](#) [R3201L002A-E2](#)

Компания «Океан Электроники» предлагает заключение долгосрочных отношений при поставках импортных электронных компонентов на взаимовыгодных условиях!

Наши преимущества:

- Поставка оригинальных импортных электронных компонентов напрямую с производств Америки, Европы и Азии, а так же с крупнейших складов мира;
- Широкая линейка поставок активных и пассивных импортных электронных компонентов (более 30 млн. наименований);
- Поставка сложных, дефицитных, либо снятых с производства позиций;
- Оперативные сроки поставки под заказ (от 5 рабочих дней);
- Экспресс доставка в любую точку России;
- Помощь Конструкторского Отдела и консультации квалифицированных инженеров;
- Техническая поддержка проекта, помощь в подборе аналогов, поставка прототипов;
- Поставка электронных компонентов под контролем ВП;
- Система менеджмента качества сертифицирована по Международному стандарту ISO 9001;
- При необходимости вся продукция военного и аэрокосмического назначения проходит испытания и сертификацию в лаборатории (по согласованию с заказчиком);
- Поставка специализированных компонентов военного и аэрокосмического уровня качества (Xilinx, Altera, Analog Devices, Intersil, Interpoint, Microsemi, Actel, Aeroflex, Peregrine, VPT, Syfer, Eurofarad, Texas Instruments, MS Kennedy, Miteq, Cobham, E2V, MA-COM, Hittite, Mini-Circuits, General Dynamics и др.);

Компания «Океан Электроники» является официальным дистрибьютором и эксклюзивным представителем в России одного из крупнейших производителей разъемов военного и аэрокосмического назначения «JONHON», а так же официальным дистрибьютором и эксклюзивным представителем в России производителя высокотехнологичных и надежных решений для передачи СВЧ сигналов «FORSTAR».



JONHON

«JONHON» (основан в 1970 г.)

Разъемы специального, военного и аэрокосмического назначения:

(Применяются в военной, авиационной, аэрокосмической, морской, железнодорожной, горно- и нефтедобывающей отраслях промышленности)

«FORSTAR» (основан в 1998 г.)

ВЧ соединители, коаксиальные кабели,
кабельные сборки и микроволновые компоненты:

(Применяются в телекоммуникациях гражданского и специального назначения, в средствах связи, РЛС, а так же военной, авиационной и аэрокосмической отраслях промышленности).



Телефон: 8 (812) 309-75-97 (многоканальный)

Факс: 8 (812) 320-03-32

Электронная почта: ocean@oceanchips.ru

Web: <http://oceanchips.ru/>

Адрес: 198099, г. Санкт-Петербург, ул. Калинина, д. 2, корп. 4, лит. А