

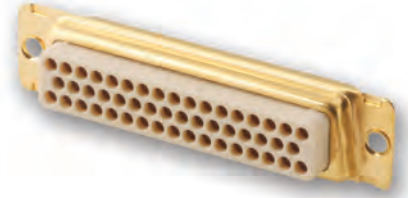
3401-002 D*MA Connectors

Features/Benefits

- D*Sub Connector type
- Removable Contacts technology
- Standard and High Density available
- From 9 to 104 ways
- ESCC Specification. Reference 3401002

Typical Applications

- Satellite Structure Space Harnesses
- Payloads Harnesses
- Test Harnesses
- Launchers Harnesses



Connectors with crimp, snap-in, removable contacts .

Connectors normally supplied without contacts (suffix F0 in the description, not marked on the connector). The contacts should be ordered separately.

When supplied with contacts (no suffix F0), the connectors are equipped with contacts:

Size 20/20 for D*MA Connectors standard density

Size 22/22 for D*MA Connectors high density

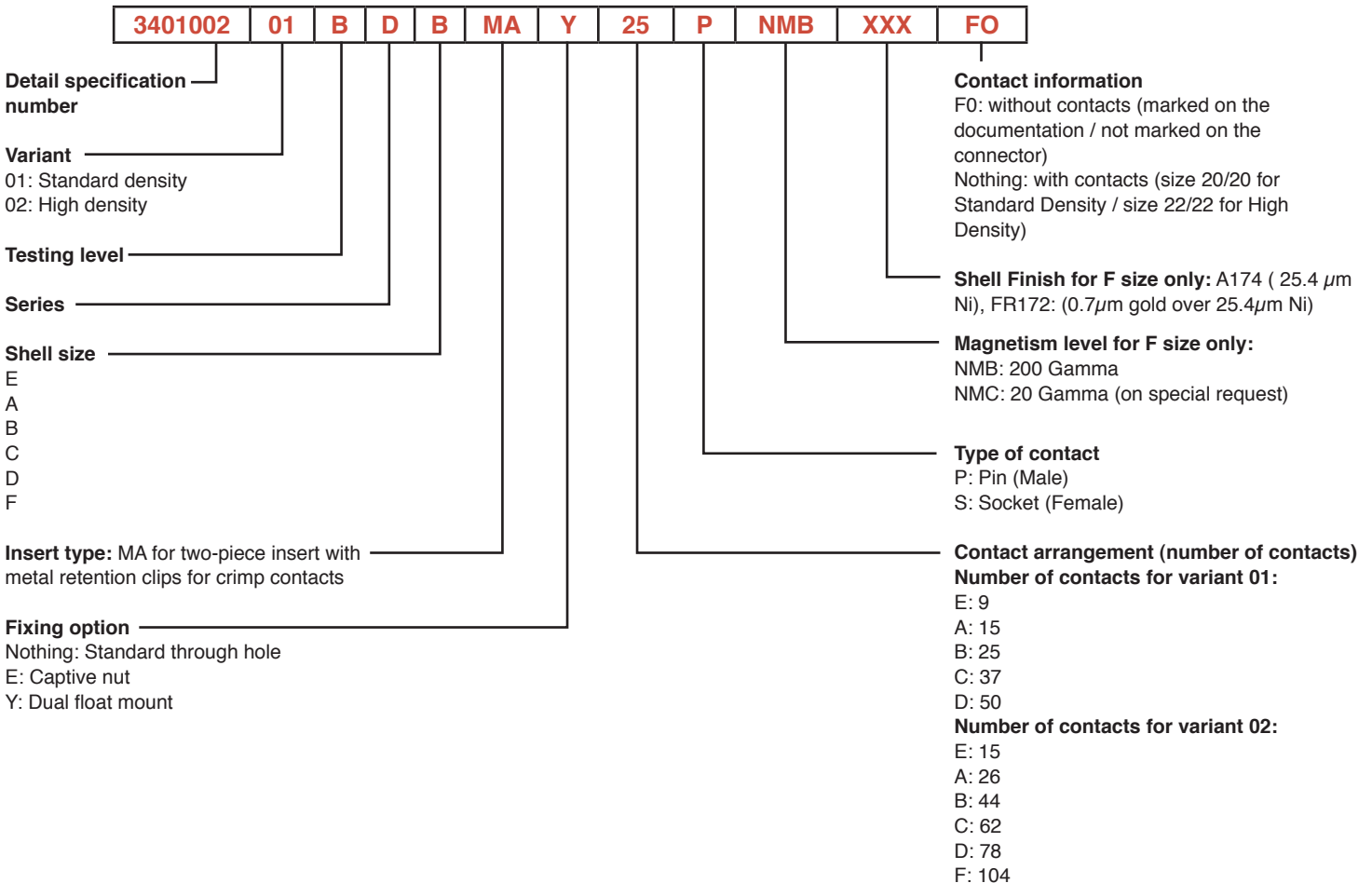
Packaging unit: 1 piece (plastic bag) for connectors, 250 pieces for contacts.

Dust cap and insertion/extraction tool supplied with each connector, only for quality level ESA/ESCC

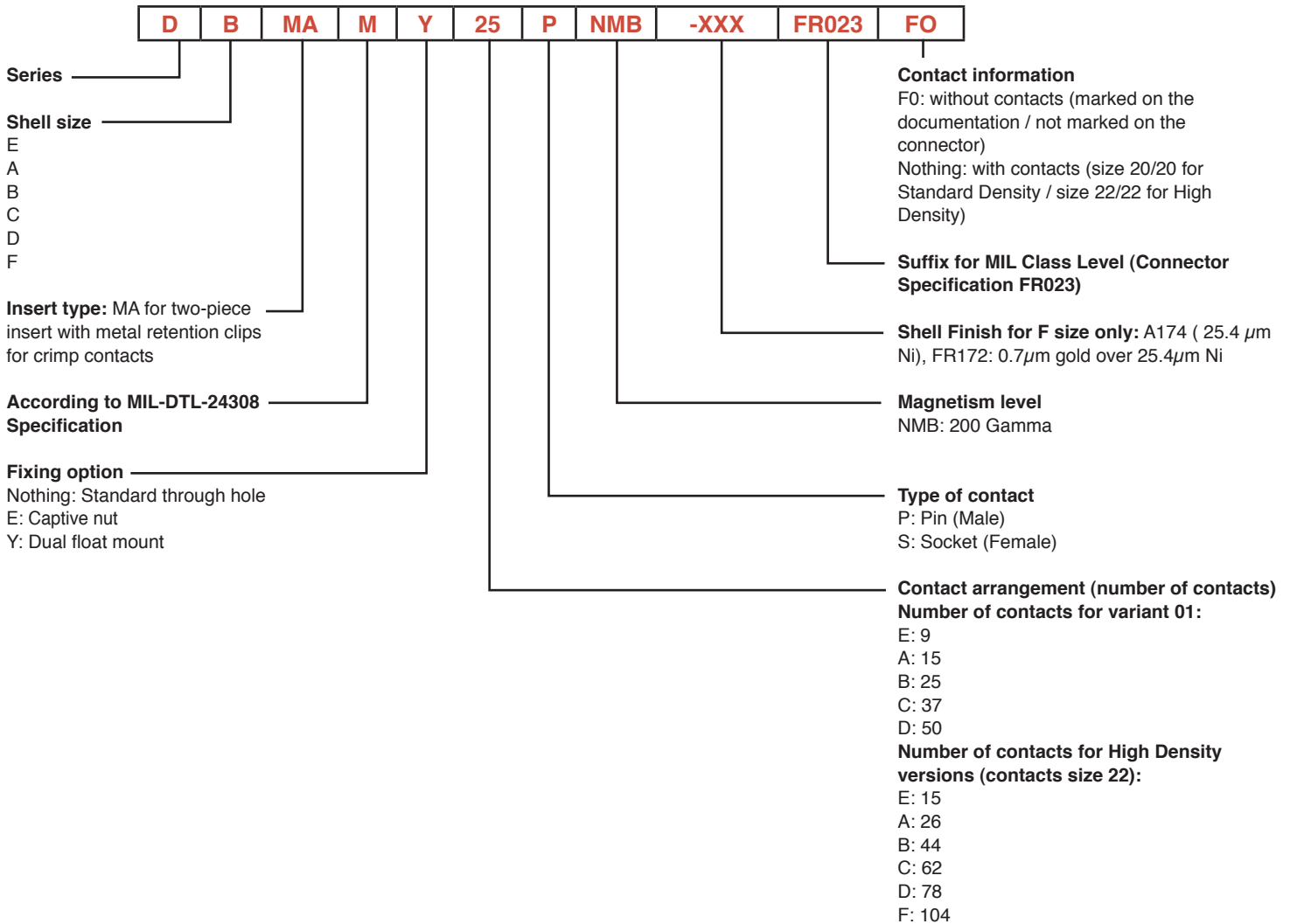
PARTICULARITIES:

- Shells copper alloy for size E, A, B, C, D
- Shells Aluminium alloy for size F (104 ways)
- Fixing option E (captive nut)
- Fixing option Y (dual float mount)

How to order – ESA/ESCC Quality Level

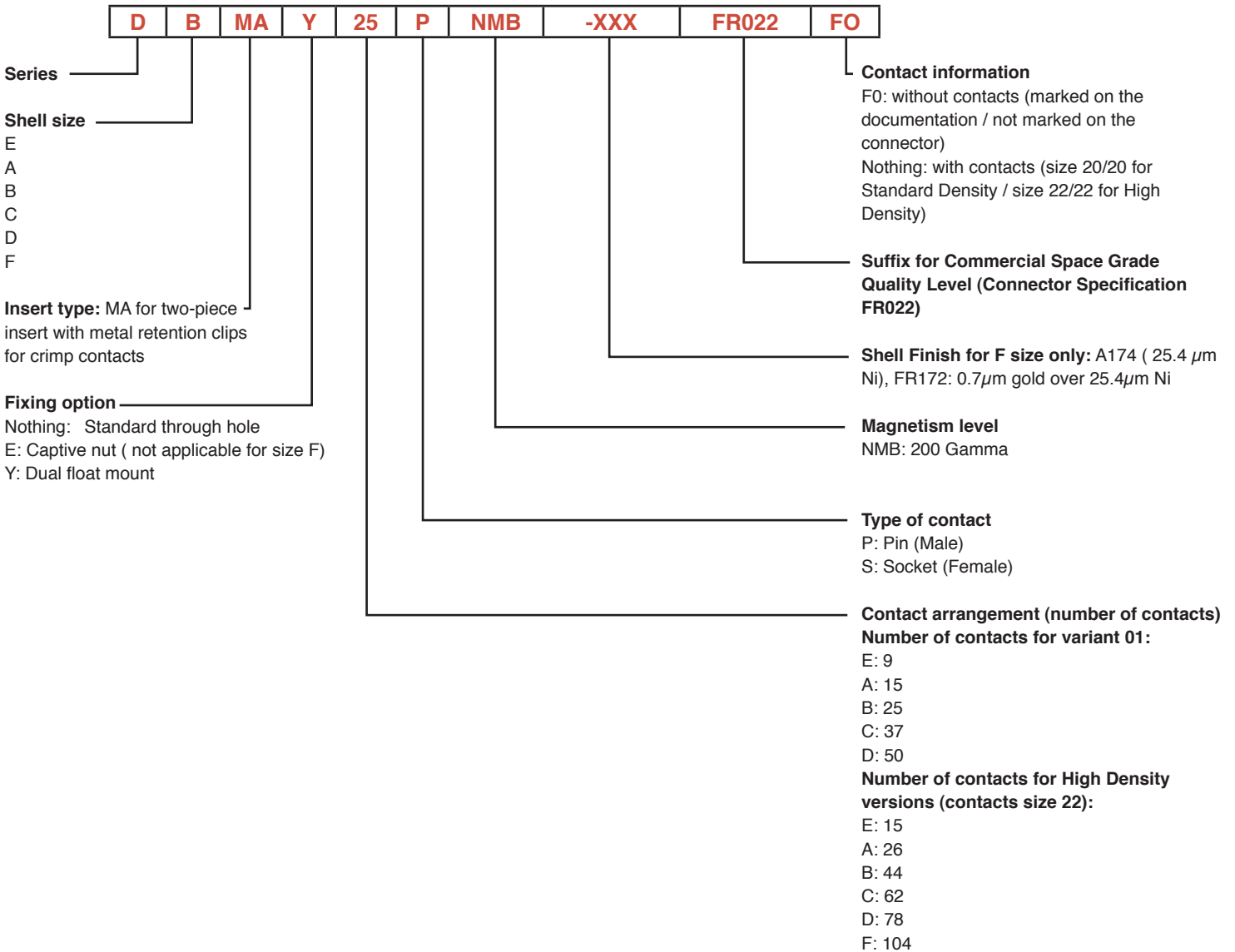


3401-002 D*MA Connectors



3401-002 D*MA Connectors

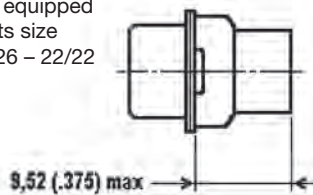
How to order – FR022 Quality Level



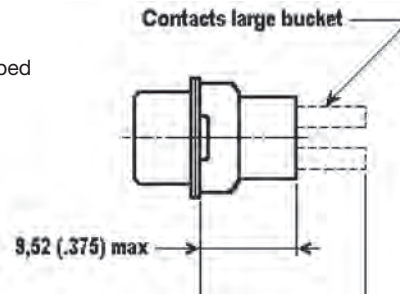
3401-002 D*MA Connectors

Specific Dimensions

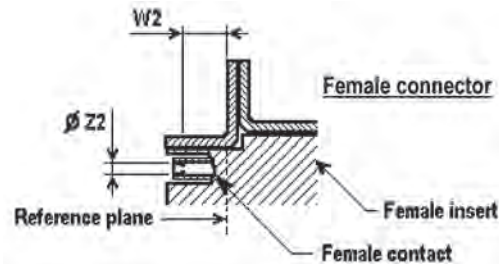
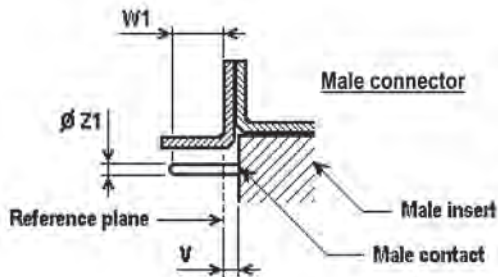
Connectors equipped with contacts size 20/20 – 20/26 – 22/22



Connectors equipped with contacts size 20/18



D*MA connectors with contacts



Shell Size	V max	W1 min (Full pin diameter)		W1 max (Full pin diameter)		W2 min (Square ended pin)	
		S.D. (# 20)	H.D. (# 22)	S.D. (# 20)	H.D. (# 22)	S.D. (# 20)	H.D. (# 22)
E	0,40 (.016)	4,36 (.172)	4,43 (.174)	5,48 (.216)	5,45 (.215)	3,77 (.148)	3,63 (.143)
A	0,40 (.016)	4,36 (.172)	4,43 (.174)	5,48 (.216)	5,45 (.215)	3,77 (.148)	3,63 (.143)
B	0,60 (.024)	4,26 (.168)	4,33 (.170)	5,38 (.212)	5,45 (.215)	3,77 (.148)	3,63 (.143)
C	0,60 (.024)	4,26 (.168)	4,33 (.170)	5,38 (.212)	5,45 (.215)	3,77 (.148)	3,63 (.143)
D	0,60 (.024)	4,26 (.168)	4,33 (.170)	5,38 (.212)	5,45 (.215)	3,77 (.148)	3,63 (.143)
F	0,60 (.024)	N.A.	4,33 (.170)	N.A.	5,45 (.215)	N.A.	3,63 (.143)

Z1: 0,99 (.039) / 1,04 (.041) S.D.* (# 20), or 0,75 (.0295) / 0,77 (.0305) H.D.* (# 22)

Z2: to accommodate a 1,02 (.040) diameter pin S.D.* (# 20), or a 0,76 (.030) diameter pin H.D.* (# 22)

* SD: Standard density

HD: High density

Weights

Max Weight (grams) without contacts and without accessories**	Shell Size	Standard Density	High Density
	E	6.0	6.0
	A	8.3	8.0
	B	13.6	12.0
	C	18.9	17.0
	D	22.3	20.0
	F	N.A.	25

** For contacts weight, refer to next page

For dual float mount (Y), weight if applicable, added 0,60 grams

For captive nut (E), weight if applicable, added 0,65 grams

3401-002 D*MA Connectors

Cross References

Type • Without contacts

Description ESA/ESCC	Part Number
340100201B DEMA9PNMBF0	C115370-5010
340100201B DEMA9SNMBF0	C115370-5011
340100201B DAMA15PNMBF0	C115370-5012
340100201B DAMA15SNMBF0	C115370-5013
340100201B DBMA25PNMBF0	C115370-5014
340100201B DBMA25SNMBF0	C115370-5015
340100201B DCMA37PNMBF0	C115370-5016
340100201B DCMA37SNMBF0	C115370-5017
340100201B DDMA50PNMBF0	C115370-5018
340100201B DDMA50SNMBF0	C115370-5019
340100202B DEMA15PNMBF0	C115368-5030
340100202B DEMA15SNMBF0	C115368-5031
340100202B DAMA26PNMBF0	C115368-5032
340100202B DAMA26SNMBF0	C115368-5033
340100202B DBMA44PNMBF0	C115368-5034
340100202B DBMA44SNMBF0	C115368-5035
340100202B DCMA62PNMBF0	C115368-5036
340100202B DCMA62SNMBF0	C115368-5037
340100202B DDMA78PNMBF0	C115368-5038
340100202B DDMA78SNMBF0	C115368-5039
340100202B DFMA104PNMB-A174-F0	C115368-5092
340100202B DFMA104SNMB-A174-F0	C115368-5093
340100202B DFMA104PNMB-FR172-F0	C115368-5082
340100202B DFMA104SNMB-FR172-F0	C115368-5083

Description FR022	Part Number
DEMA9PNMB-FR022-F0	C115370-3210
DEMA9SNMB-FR022-F0	C115370-3211
DAMA15PNMB-FR022-F0	C115370-3212
DAMA15SNMB-FR022-F0	C115370-3213
DBMA25PNMB-FR022-F0	C115370-3214
DBMA25SNMB-FR022-F0	C115370-3215
DCMA37PNMB-FR022-F0	C115370-3216
DCMA37SNMB-FR022-F0	C115370-3217
DDMA50PNMB-FR022-F0	C115370-3218
DDMA50SNMB-FR022-F0	C115370-3219
DEMA15PNMB-FR022-F0	C115368-3200
DEMA15SNMB-FR022-F0	C115368-3201
DAMA26PNMB-FR022-F0	C115368-3202
DAMA26SNMB-FR022-F0	C115368-3203
DBMA44PNMB-FR022-F0	C115368-3204
DBMA44SNMB-FR022-F0	C115368-3205
DCMA62PNMB-FR022-F0	C115368-3206
DCMA62SNMB-FR022-F0	C115368-3207
DDMA78PNMB-FR022-F0	C115368-3218
DDMA78SNMB-FR022-F0	C115368-3219
DFMA104PNMB-A174-FR022-F0	C115368-3292
DFMA104SNMB-A174-FR022-F0	C115368-3293
DFMA104PNMB-FR172-FR022-F0	C115368-3282
DFMA104SMB-FR172-FR022-F0	C115368-3283

*FR023 under request only

Description ESA/ESCC	Part Number
340100201B DEMAY9PNMBF0	C115370-5030
340100201B DEMAY9SNMBF0	C115370-5031
340100201B DAMAY15PNMBF0	C115370-5032
340100201B DAMAY15SNMBF0	C115370-5033
340100201B DBMAY25PNMBF0	C115370-5034
340100201B DBMAY25SNMBF0	C115370-5035
340100201B DCMAY37PNMBF0	C115370-5036
340100201B DCMAY37SNMBF0	C115370-5037
340100201B DDMAY50PNMBF0	C115370-5038
340100201B DDMAY50SNMBF0	C115370-5039
340100202B DEMAY15PNMBF0	C115368-5040
340100202B DEMAY15SNMBF0	C115368-5041
340100202B DAMAY26PNMBF0	C115368-5042
340100202B DAMAY26SNMBF0	C115368-5043
340100202B DBMAY44PNMBF0	C115368-5044
340100202B DBMAY44SNMBF0	C115368-5045
340100202B DCMAY62PNMBF0	C115368-5046
340100202B DCMAY62SNMBF0	C115368-5047
340100202B DDMAY78PNMBF0	C115368-5048
340100202B DDMAY78SNMBF0	C115368-5049
340100202B DFMAY104PNMB-A174-F0	C115368-5096
340100202B DFMAY104SNMB-A174-F0	C115368-5097
340100202B DFMAY104PNMB-FR172-F0	C115368-5086
340100202B DFMAY104SNMB-FR172-F0	C115368-5087

Description FR022	Part Number
DEMAY9PNMB-FR022-F0	C115370-3230
DEMAY9SNMB-FR022-F0	C115370-3231
DAMAY15PNMB-FR022-F0	C115370-3232
DAMAY15SNMB-FR022-F0	C115370-3233
DBMAY25PNMB-FR022-F0	C115370-3234
DBMAY25SNMB-FR022-F0	C115370-3235
DCMAY37PNMB-FR022-F0	C115370-3236
DCMAY37SNMB-FR022-F0	C115370-3237
DDMAY50PNMB-FR022-F0	C115370-3238
DDMAY50SNMB-FR022-F0	C115370-3239
DEMAY15PNMB-FR022-F0	C115368-3230
DEMAY15SNMB-FR022-F0	C115368-3231
DAMAY26PNMB-FR022-F0	C115368-3232
DAMAY26SNMB-FR022-F0	C115368-3233
DBMAY44PNMB-FR022-F0	C115368-3234
DBMAY44SNMB-FR022-F0	C115368-3235
DCMAY62PNMB-FR022-F0	C115368-3236
DCMAY62SNMB-FR022-F0	C115368-3237
DDMAY78PNMB-FR022-F0	C115368-3238
DDMAY78SNMB-FR022-F0	C115368-3239
DFMAY104PNMB-A174-FR022-F0	C115368-3296
DFMAY104SNMB-A174-FR022-F0	C115368-3297
DFMAY104PNMB-FR172-FR022-F0	C115368-3286
DFMAY104SMB-FR172-FR022-F0	C115368-3287

*FR023 under request only



Dimensions are shown in mm (inch)
Dimensions subject to change

D*MA Connectors and Contacts

Description ESA/ESCC	Part Number
340100201B DEMA9PNMBF0	C115370-5050
340100201B DEMA9SNMBF0	C115370-5051
340100201B DAMAE15PNMBF0	C115370-5052
340100201B DAMAE15SNMBF0	C115370-5053
340100201B DBMAE25PNMBF0	C115370-5054
340100201B DBMAE25SNMBF0	C115370-5055
340100201B DCMAE37PNMBF0	C115370-5056
340100201B DCMAE37SNMBF0	C115370-5057
340100201B DDMAE50PNMBF0	C115370-5058
340100201B DDMAE50SNMBF0	C115370-5059
340100202B DEMA15PNMBF0	C115368-5070
340100202B DEMA15SNMBF0	C115368-5071
340100202B DAMAE26PNMBF0	C115368-5072
340100202B DAMAE26SNMBF0	C115368-5073
340100202B DBMAE44PNMBF0	C115368-5074
340100202B DBMAE44SNMBF0	C115368-5075
340100202B DCMAE62PNMBF0	C115368-5076
340100202B DCMAE62SNMBF0	C115368-5077
340100202B DDMAE78PNMBF0	C115368-5078
340100202B DDMAE78SNMBF0	C115368-5079
340100202B DFMAE104PNMB-A174-F0	C115368-6066
340100202B DFMAE104SNMB-A174-F0	C115368-6067
340100202B DFMAE104PNMB-FR172-F0	C115368-6062
340100202B DFMAE104SNMB-FR172-F0	C115368-6063

Description FR022	Part Number
DEMAE9PNMB-FR022-F0	C115370-3250
DEMAE9SNMB-FR022-F0	C115370-3251
DAMAE15PNMB-FR022-F0	C115370-3252
DAMAE15SNMB-FR022-F0	C115370-3253
DBMAE25PNMB-FR022-F0	C115370-3254
DBMAE25SNMB-FR022-F0	C115370-3255
DCMAE37PNMB-FR022-F0	C115370-3256
DCMAE37SNMB-FR022-F0	C115370-3257
DDMAE50PNMB-FR022-F0	C115370-3258
DDMAE50SNMB-FR022-F0	C115370-3259
DEMAE15PNMB-FR022-F0	C115368-3250
DEMAE15SNMB-FR022-F0	C115368-3251
DAMAE26PNMB-FR022-F0	C115368-3252
DAMAE26SNMB-FR022-F0	C115368-3253
DBMAE44PNMB-FR022-F0	C115368-3254
DBMAE44SNMB-FR022-F0	C115368-3255
DCMAE62PNMB-FR022-F0	C115368-3256
DCMAE62SNMB-FR022-F0	C115368-3257
DDMAE78PNMB-FR022-F0	C115368-3258
DDMAE78SNMB-FR022-F0	C115368-3259
DFMAE104PNMB-A174-FR022-F0	C115368-3456
DFMAE104SNMB-A174-FR022-F0	C115368-3457
DFMAE104PNMB-FR172-FR022-F0	C115368-3452
DFMAE104SNMB-FR172-FR022-F0	C115368-3453

*FR023 under request only

Male (Pin) Crimp Contacts

Bucket Type	Size	Wire Size	ESA/ESCC Quality Level		FR023 Quality Level		FR022 Quality Level	
			Description	Part Number	Description	Part Number	Description	Part Number
		AWG						
Standard	20/20	20 / 22 / 24	340100501B	C330-8996-101H	330-8996-101-FR023	C330-8996-101E	330-8996-101-FR022	C330-8996-101D
Reduced	20/26	26 / 28 / 30*	340100503B	C330-8997-101H	330-8997-101-FR023	C330-8997-101E	330-8997-101-FR022	C330-8997-101D
Large	20/18	18 / 20 / 2x22*	340100505B	C330-8995-101H	330-8995-101-FR023	C330-8995-101E	330-8995-101-FR022	C330-8995-101D
Standard	22/22	22 / 24 / 26 / 28*	340100507B	C330-8998-101H	330-8998-101-FR023	C330-8998-101E	330-8998-101-FR022	C330-8998-101D

Female (Socket) Crimp Contacts

Bucket Type	Size	Wire Size	ESA/ESCC Quality Level		FR023 Quality Level		FR022 Quality Level	
			Description	Part Number	Description	Part Number	Description	Part Number
		AWG						
Standard	20/20	20 / 22 / 24	340100502B	C031-8996-101H	031-8996-101-FR023	C031-8996-101E	031-8996-101-FR022	C031-8996-101D
Reduced	20/26	26 / 28 / 30*	340100504B	C031-8997-101H	031-8997-101-FR023	C031-8997-101E	031-8997-101-FR022	C031-8997-101D
Large	20/18	18 / 20 / 2x22*	340100506B	C031-8995-101H	031-8995-101-FR023	C031-8995-101E	031-8995-101-FR022	C031-8995-101D
Standard	22/22	22 / 24 / 26 / 28*	340100508B	C031-8998-101H	031-8998-101-FR023	C031-8998-101E	031-8998-101-FR022	C031-8998-101D

*Not approved by ESA.



Dimensions are shown in mm (inch)
Dimensions subject to change

Connectors with contacts

Description ESA/ESCC	Part Number
340100201B DEMA9PNMB	C115370-5000
340100201B DEMA9SNMB	C115370-5001
340100201B DAMA15PNMB	C115370-5002
340100201B DAMA15SNMB	C115370-5003
340100201B DBMA25PNMB	C115370-5004
340100201B DBMA25SNMB	C115370-5005
340100201B DCMA37PNMB	C115370-5006
340100201B DCMA37SNMB	C115370-5007
340100201B DDMA50PNMB	C115370-5008
340100201B DDMA50SNMB	C115370-5009
340100202B DEMA15PNMB	C115368-5020
340100202B DEMA15SNMB	C115368-5021
340100202B DAMA26PNMB	C115368-5022
340100202B DAMA26SNMB	C115368-5023
340100202B DBMA44PNMB	C115368-5024
340100202B DBMA44SNMB	C115368-5025
340100202B DCMA62PNMB	C115368-5026
340100202B DCMA62SNMB	C115368-5027
340100202B DDMA78PNMB	C115368-5028
340100202B DDMA78SNMB	C115368-5029
340100202B DFMA104PNMB-A174	C115368-5090
340100202B DFMA104SNMB-A174	C115368-5091
340100202B DFMA104PNMB-FR172	C115368-5080
340100202B DFMA104SNMB-FR172	C115368-5081

Description FR022	Part Number
DEMA9PNMB-FR022	C115370-3200
DEMA9SNMB-FR022	C115370-3201
DAMA15PNMB-FR022	C115370-3202
DAMA15SNMB-FR022	C115370-3203
DBMA25PNMB-FR022	C115370-3204
DBMA25SNMB-FR022	C115370-3205
DCMA37PNMB-FR022	C115370-3206
DCMA37SNMB-FR022	C115370-3207
DDMA50PNMB-FR022	C115370-3208
DDMA50SNMB-FR022	C115370-3209
DEMA15PNMB-FR022	C115368-3200
DEMA15SNMB-FR022	C115368-3201
DAMA26PNMB-FR022	C115368-3202
DAMA26SNMB-FR022	C115368-3203
DBMA44PNMB-FR022	C115368-3204
DBMA44SNMB-FR022	C115368-3205
DCMA62PNMB-FR022	C115368-3206
DCMA62SNMB-FR022	C115368-3207
DDMA78PNMB-FR022	C115368-3208
DDMA78SNMB-FR022	C115368-3209
DFMA104PNMB-A174-FR022	C115368-3290
DFMA104SNMB-A174-FR022	C115368-3291
DFMA104PMB-FR172-FR022	C115368-3280
DFMA104SMB-FR172-FR022	C115368-3281

*FR023 under request only

Description ESA/ESCC	Part Number
340100201B DEMAY9PNMB	C115370-5020
340100201B DEMAY9SNMB	C115370-5021
340100201B DAMAY15PNMB	C115370-5022
340100201B DAMAY15SNMB	C115370-5023
340100201B DBMAY25PNMB	C115370-5024
340100201B DBMAY25SNMB	C115370-5025
340100201B DCMAY37PNMB	C115370-5026
340100201B DCMAY37SNMB	C115370-5027
340100201B DDMAY50PNMB	C115370-5028
340100201B DDMAY50SNMB	C115370-5029
340100202B DEMAY15PNMB	C115368-5040
340100202B DEMAY15SNMB	C115368-5041
340100202B DAMAY26PNMB	C115368-5042
340100202B DAMAY26SNMB	C115368-5043
340100202B DBMAY44PNMB	C115368-5044
340100202B DBMAY44SNMB	C115368-5045
340100202B DCMAY62PNMB	C115368-5046
340100202B DCMAY62SNMB	C115368-5047
340100202B DDMAY78PNMB	C115368-5048
340100202B DDMAY78SNMB	C115368-5049
340100202B DFMAY104PNMB-A174	C115368-5094
340100202B DFMAY104SNMB-A174	C115368-5095
340100202B DFMAY104PNMB-FR172	C115368-5084
340100202B DFMAY104SNMB-FR172	C115368-5085

Description FR022	Part Number
DEMAY9PNMB-FR022	C115370-3220
DEMAY9SNMB-FR022	C115370-3221
DAMAY15PNMB-FR022	C115370-3222
DAMAY15SNMB-FR022	C115370-3223
DBMAY25PNMB-FR022	C115370-3224
DBMAY25SNMB-FR022	C115370-3225
DCMAY37PNMB-FR022	C115370-3226
DCMAY37SNMB-FR022	C115370-3227
DDMAY50PNMB-FR022	C115370-3228
DDMAY50SNMB-FR022	C115370-3229
DEMAY15PNMB-FR022	C115368-3220
DEMAY15SNMB-FR022	C115368-3221
DAMAY26PNMB-FR022	C115368-3222
DAMAY26SNMB-FR022	C115368-3223
DBMAY44PNMB-FR022	C115368-3224
DBMAY44SNMB-FR022	C115368-3225
DCMAY62PNMB-FR022	C115368-3226
DCMAY62SNMB-FR022	C115368-3227
DDMAY78PNMB-FR022	C115368-3228
DDMAY78SNMB-FR022	C115368-3229
DFMAY104PNMB-A174-FR022	C115368-3294
DFMAY104SNMB-A174-FR022	C115368-3295
DFMAY104PMB-FR172-FR022	C115368-3284
DFMAY104SMB-FR172-FR022	C115368-3285

*FR023 under request only



Dimensions are shown in mm (inch)
Dimensions subject to change

3401-002 D*MA Connectors

Description ESA/ESCC	Part Number
340100201B DEMA9PNMB	C115370-5040
340100201B DEMA9SNMB	C115370-5041
340100201B DAMAE15PNMB	C115370-5042
340100201B DAMAE15SNMB	C115370-5043
340100201B DBMAE25PNMB	C115370-5044
340100201B DBMAE25SNMB	C115370-5045
340100201B DCMAE37PNMB	C115370-5046
340100201B DCMAE37SNMB	C115370-5047
340100201B DDMAE50PNMB	C115370-5048
340100201B DDMAE50SNMB	C115370-5049
340100202B DEMA15PNMB	C115368-5060
340100202B DEMA15SNMB	C115368-5061
340100202B DAMAE26PNMB	C115368-5062
340100202B DAMAE26SNMB	C115368-5063
340100202B DBMAE44PNMB	C115368-5064
340100202B DBMAE44SNMB	C115368-5065
340100202B DCMAE62PNMB	C115368-5066
340100202B DCMAE62SNMB	C115368-5067
340100202B DDMAE78PNMB	C115368-5068
340100202B DDMAE78SNMB	C115368-5069
340100202B DFMAE104PNMB-A174	C115368-6064
340100202B DFMAE104SNMB-A174	C115368-6065
340100202B DFMAE104PNMB-FR172	C115368-6060
340100202B DFMAE104SNMB-FR172	C115368-6061

Description FR022	Part Number
DEMAE9PNMB-FR022	C115370-3240
DEMAE9SNMB-FR022	C115370-3241
DAMAE15PNMB-FR022	C115370-3242
DAMAE15SNMB-FR022	C115370-3243
DBMAE25PNMB-FR022	C115370-3244
DBMAE25SNMB-FR022	C115370-3245
DCMAE37PNMB-FR022	C115370-3246
DCMAE37SNMB-FR022	C115370-3247
DDMAE50PNMB-FR022	C115370-3248
DDMAE50SNMB-FR022	C115370-3249
DEMAE15PNMB-FR022	C115368-3240
DEMAE15SNMB-FR022	C115368-3241
DAMAE26PNMB-FR022	C115368-3242
DAMAE26SNMB-FR022	C115368-3243
DBMAE44PNMB-FR022	C115368-3244
DBMAE44SNMB-FR022	C115368-3245
DCMAE62PNMB-FR022	C115368-3246
DCMAE62SNMB-FR022	C115368-3247
DDMAE78PNMB-FR022	C115368-3248
DDMAE78SNMB-FR022	C115368-3249
DFMAE104PNMB-A174-FR022	C115368-3454
DFMAE104SNMB-A174-FR022	C115368-3455
DFMAE104PNMB-FR172-FR022	C115368-3450
DFMAE104SMB-FR172-FR022	C115368-3451

*FR023 under request only

When supplied with contacts (no suffix F0), the connectors are equipped with contacts:

Size 20/20 for D*MA Connectors standard density

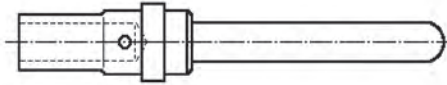
Size 22/22 for D*MA Connectors high density



Dimensions are shown in mm (inch)
Dimensions subject to change

3401-005 D*MA Contacts

Male (Pin) Crimp Contacts



Contact Type	Max Weight (grams)
Pin 20/20	0.16
Pin 20/26	0.18
Pin 20/18	0.30
Pin 22/22	0.08

Bucket Type	Size	Wire Size	ESA/ESCC Quality Level		FR023 Quality Level		FR022 Quality Level	
		AWG	Description	Part Number	Description	Part Number	Description	Part Number
Standard	20/20	20 / 22 / 24	340100501B	C330-8996-101H	330-8996-101-FR023	C330-8996-101E	330-8996-101-FR022	C330-8996-101D
Reduced	20/26	26 / 28 / 30*	340100503B	C330-8997-101H	330-8997-101-FR023	C330-8997-101E	330-8997-101-FR022	C330-8997-101D
Large	20/18	18 / 20 / 2x22*	340100505B	C330-8995-101H	330-8995-101-FR023	C330-8995-101E	330-8995-101-FR022	C330-8995-101D
Standard	22/22	22 / 24 / 26 / 28*	340100507B	C330-8998-101H	330-8998-101-FR023	C330-8998-101E	330-8998-101-FR022	C330-8998-101D

Size explanation:

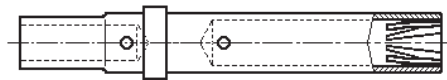
Eg: 20/26: 20 means contacts for standard density D*MA

26 means max gauge acceptable

Eg: 22/22: 22 means contact for high density D*MA

22 means max gauge acceptable

Female (Socket) Crimp Contacts



Contact Type	Max Weight (grams)
Skt 20/20	0.18
Skt 20/26	0.21
Skt 20/18	0.32
Skt 22/22	0.11

Bucket Type	Size	Wire Size	ESA/ESCC Quality Level		FR023 Quality Level		FR022 Quality Level	
		AWG	Description	Part Number	Description	Part Number	Description	Part Number
Standard	20/20	20 / 22 / 24	340100502B	C031-8996-101H	031-8996-101-FR023	C031-8996-101E	031-8996-101-FR022	C031-8996-101D
Reduced	20/26	26 / 28 / 30*	340100504B	C031-8997-101H	031-8997-101-FR023	C031-8997-101E	031-8997-101-FR022	C031-8997-101D
Large	20/18	18 / 20 / 2x22*	340100506B	C031-8995-101H	031-8995-101-FR023	C031-8995-101E	031-8995-101-FR022	C031-8995-101D
Standard	22/22	22 / 24 / 26 / 28*	340100508B	C031-8998-101H	031-8998-101-FR023	C031-8998-101E	031-8998-101-FR022	C031-8998-101D

Note *: Not approved by ESA

Contacts are without marking and without ink color coding (non-outgassing)

Residual magnetism level NMB (200 Gamma max)

For other residual magnetism level, consult factory

Packaging unit: 250 pieces (plastic bag)



Dimensions are shown in mm (inch)
Dimensions subject to change

3401-005 D*MA Contacts

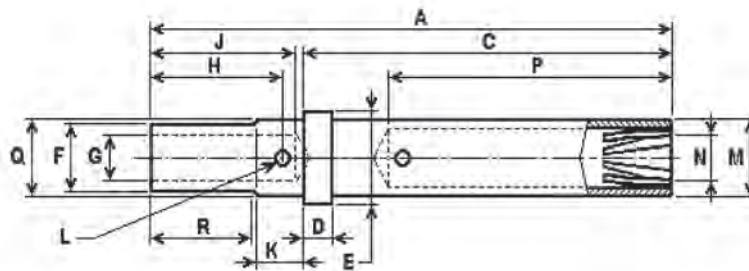
Male Contact Size 20/20



mm	A	C	D	∅E	∅F	∅G	H	J	K	∅L	∅M	∅N	O	∅P	∅Q	R
Min	-	9,80	0,74	2,08	1,65	1,09	3,40	3,81	1,01	0,64	1,78	0,99	1,65	-	1,73	2,40
Max	14,14	10,00	0,84	2,16	1,73	1,17	3,68	4,70	1,24	0,80	1,85	1,04	1,75	0,30	1,80	-

(Inch)	A	C	D	∅E	∅F	∅G	H	J	K	∅L	∅M	∅N	O	∅P	∅Q	R
Min	-	.386	.029	.082	.065	.043	.134	.150	.040	.025	.070	.039	.065	-	.068	.094
Max	.557	.394	.033	.085	.068	.046	.145	.185	.049	.031	.073	.041	.069	.012	.071	-

Female Contact Size 20/20

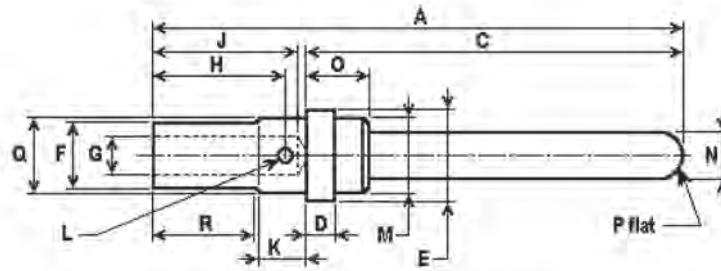


mm	A	C	D	∅E	∅F	∅G	H	J	K	∅L	∅M	∅N	P	∅Q	R
Min	-	9,45	0,74	2,08	1,65	1,09	3,40	3,81	1,01	0,64	1,75	1,07	7,37	1,73	2,40
Max	13,80	9,65	0,84	2,16	1,73	1,17	3,68	4,70	1,24	0,80	1,85	1,14	7,87	1,80	-

(Inch)	A	C	D	∅E	∅F	∅G	H	J	K	∅L	∅M	∅N	P	∅Q	R
Min	-	.373	.029	.082	.065	.043	.134	.150	.040	.025	.069	.042	.29	.068	.094
Max	.543	.379	.033	.085	.068	.046	.145	.185	.049	.031	.073	.045	.31	.071	-

3401-005 D*MA Contacts

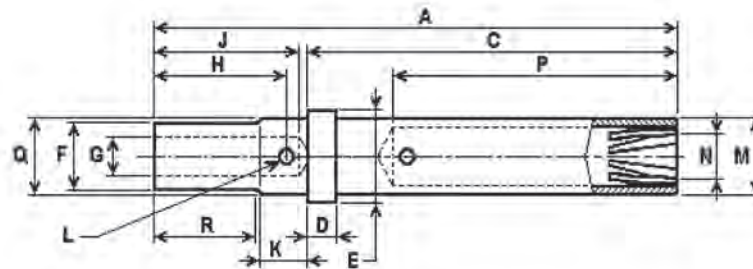
Male Contact Size 20/26



mm	A	C	D	∅E	∅F	∅G	H	J	K	∅L	∅M	∅N	O	∅P	∅Q	R
Min	-	9,80	0,74	2,08	1,65	0,59	3,40	3,81	1,01	0,45	1,78	0,99	1,65	-	1,73	2,40
Max	14,14	10,00	0,84	2,16	1,73	0,66	3,68	4,70	1,24	0,55	1,85	1,04	1,75	0,30	1,80	-

(Inch)	A	C	D	∅E	∅F	∅G	H	J	K	∅L	∅M	∅N	O	∅P	∅Q	R
Min	-	.386	.029	.082	.065	.023	.134	.150	.040	.018	.070	.039	.065	-	.068	.094
Max	.557	.394	.033	.085	.068	.026	.145	.185	.049	.022	.073	.041	.069	.012	.071	-

Female Contact Size 20/26

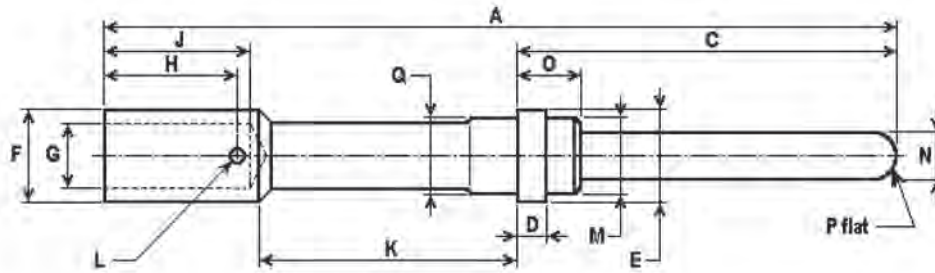


mm	A	C	D	∅E	∅F	∅G	H	J	K	∅L	∅M	∅N	P	∅Q	R
Min	-	9,45	0,74	2,08	1,65	0,59	3,40	3,81	1,01	0,45	1,75	1,07	7,37	1,73	2,40
Max	13,80	9,65	0,84	2,16	1,73	0,66	3,68	4,70	1,24	0,55	1,85	1,14	7,87	1,80	-

(Inch)	A	C	D	∅E	∅F	∅G	H	J	K	∅L	∅M	∅N	P	∅Q	R
Min	-	.373	.029	.082	.065	.023	.134	.150	.040	.018	.069	.042	.29	.068	.094
Max	.543	.379	.033	.085	.068	.026	.145	.185	.049	.022	.073	.045	.31	.071	-

3401-005 D*MA Contacts

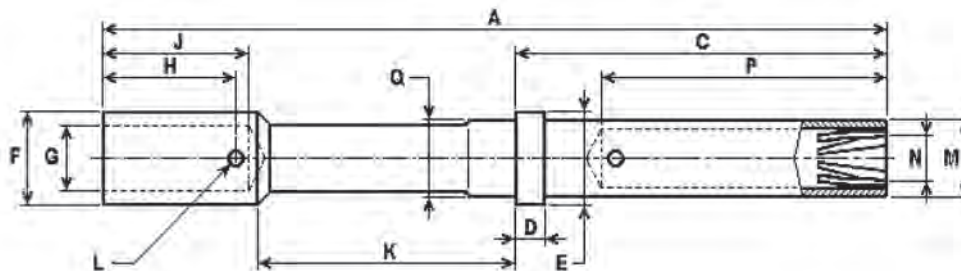
Male Contact Size 20/18



mm	A	C	D	∅ E	∅ F	∅ G	H	J	K	∅ L	∅ M	∅ N	O	∅ P	∅ Q
Min	-	9,80	0,74	2,08	2,09	1,65	3,81	4,32	6,15	0,60	1,78	0,99	1,65	-	1,73
Max	21,13	10,00	0,84	2,16	2,18	1,74	4,00	4,70	6,45	0,80	1,85	1,04	1,75	0,30	1,80

(Inch)	A	C	D	∅ E	∅ F	∅ G	H	J	K	∅ L	∅ M	∅ N	O	∅ P	∅ Q
Min	-	.386	.029	.082	.082	.065	.150	.170	.242	.024	.070	.039	.065	-	.068
Max	.832	.394	.033	.085	.086	.069	.157	.185	.254	.031	.073	.041	.069	.012	.071

Female Contact Size 20/18

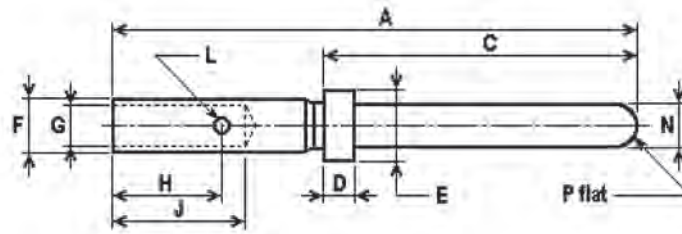


mm	A	C	D	∅ E	∅ F	∅ G	H	J	K	∅ L	∅ M	∅ N	P	∅ Q
Min	-	9,45	0,74	2,08	2,09	1,65	3,81	4,32	6,15	0,60	1,75	1,07	7,37	1,73
Max	20,80	9,65	0,84	2,16	2,18	1,74	4,00	4,70	6,45	0,80	1,85	1,14	7,87	1,80

(Inch)	A	C	D	∅ E	∅ F	∅ G	H	J	K	∅ L	∅ M	∅ N	P	∅ Q
Min	-	.373	.029	.082	.082	.065	.150	.170	.242	.024	.069	.042	.29	.068
Max	.819	.379	.033	.085	.086	.069	.157	.185	.254	.031	.073	.045	.31	.071

3401-005 D*MA Contacts

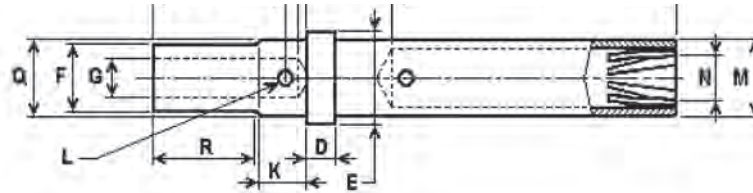
Male Contact Size 22/22



mm	A	C	D	∅ E	∅ F	∅ G	H	J	∅ L	∅ N	∅ P
Min	-	7,49	0,74	1,52	1,17	0,85	3,09	3,58	0,46	0,75	-
Max	13,64	7,62	0,84	1,57	1,22	0,90	3,27	3,99	0,56	0,77	0,20

(Inch)	A	C	D	∅ E	∅ F	∅ G	H	J	∅ L	∅ N	∅ P
Min	-	.295	.029	.060	.046	.0335	.122	.141	.018	.0295	-
Max	.537	.300	.033	.062	.048	.0355	.129	.157	.022	.0305	.008

Female Contact Size 22/22



mm	A	C	∅ F	∅ G	H	J	∅ L	∅ M	∅ N	P
Min	-	7,08	1,17	0,85	3,09	3,58	0,46	1,52	0,78	5,55
Max	13,41	7,34	1,22	0,90	3,27	3,99	0,56	1,57	-	5,85

(Inch)	A	C	∅ F	∅ G	H	J	∅ L	∅ M	∅ N	P
Min	-	.279	.046	.0335	.122	.141	.018	.060	.031	.219
Max	.528	.289	.048	.0355	.129	.157	.022	.062	-	.230

D*MA Contacts Assembly

Application Tools



Hand Crimp Tool and locator should be ordered separately



Insertion/Extraction Tool

Supplied with each connector, for quality level ESA/ESCC
To be ordered separately for quality levels FR023 and FR022

Contact	Plastic Insertion/Extraction Tool Description	Plastic Insertion/Extraction Tool Part Number	Plastic Extraction Tool Description	Plastic Extraction Tool Part Number
20/20	-	-	CET-20-11	C 323-7010-000
20/26	-	-	CET-20-11	C 323-7010-000
20/18	-	-	CET-20-11	C 323-7010-000
22/22	CIET-22D	C 274-7048-000	-	-

Contact	Wire Size	Crimp Tool Description	Crimp tool Part Number	Locator Description	Locator Part Number	Selector Position*
20/20	AWG 20	M22520/2-01	C 995-0001-584	M22520/2-08	C 995-0001-604	7
	AWG 22	M22520/2-01	C 995-0001-584	M22520/2-08	C 995-0001-604	6
	AWG 24	M22520/2-01	C 995-0001-584	M22520/2-08	C 995-0001-604	5
20/26	AWG 26	M22520/2-01	C 995-0001-584	M22520/2-08 **	C 995-0001-604	7
	AWG 28	M22520/2-01	C 995-0001-584	M22520/2-08 **	C 995-0001-604	6
	AWG 30	M22520/2-01	C 995-0001-584	M22520/2-08 **	C 995-0001-604	6
20/18	AWG 18	M22520/2-01	C 995-0001-584	K250	C 980-0005-722	8
	AWG 20	M22520/2-01	C 995-0001-584	K250	C 980-0005-722	7
22/22	AWG 22	M22520/2-01	C 995-0001-584	M22520/2-09 (Pin) or /2-06 (Skt) ***	C 995-0001-734 or -739	4
	AWG 24	M22520/2-01	C 995-0001-584	M22520/2-09 (Pin) or /2-06 (Skt) ***	C 995-0001-734 or -739	3
	AWG 26	M22520/2-01	C 995-0001-584	M22520/2-09 (Pin) or /2-06 (Skt) ***	C 995-0001-734 or -739	2
	AWG 28	M22520/2-01	C 995-0001-584	M22520/2-09 (Pin) or /2-06 (Skt) ***	C 995-0001-734 or -739	1

* For information only. Wire tensile strength test shall govern. For ESA/ESCC, see ECSS-Q-70-26 (replaces ESA PSS-01-726).

** Locator L3198-20HD (Part number 995-0001-325) can also be used for contacts 20/26.

*** Locator M22520/2-06 (Part number 995-0001-739) can also be used for both Pin and Skt contacts.

Assembly Instructions

Wire Stripping



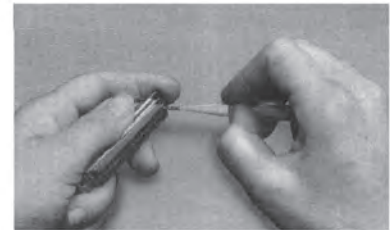
Cut wires to length. Strip Insulation per above illustration. Check for broken or frayed wires.

Contact Crimping



Insert contact and wire into proper crimp tool and locator. Crimp contact to wire. Inspect crimp.

Contact Insertion (1)



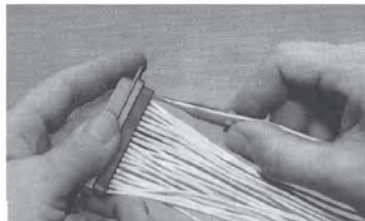
Center wired contact in groove of insertion tool with tool tip butting contact. Insert contact into cavity until a positive stop is felt. Inspect insertion.

Contact Insertion (2)



To be sure contact is locked securely, pull back lightly on wire. Repeat for balance of contacts working row by row across the insulator

Contact Extraction (1)



Place wire into extraction tool tip.

Contact Extraction (2)



Insert tool tip into contact cavity until tip bottoms against contact shoulder, releasing tines. Hold wire against tool with finger and remove tool and contact. Repeat for balance of contacts.



*Dimensions are shown in mm (inch)
Dimensions subject to change*



*Dimensions are shown in mm (inch)
Dimensions subject to change*

Компания «Океан Электроники» предлагает заключение долгосрочных отношений при поставках импортных электронных компонентов на взаимовыгодных условиях!

Наши преимущества:

- Поставка оригинальных импортных электронных компонентов напрямую с производств Америки, Европы и Азии, а так же с крупнейших складов мира;
- Широкая линейка поставок активных и пассивных импортных электронных компонентов (более 30 млн. наименований);
- Поставка сложных, дефицитных, либо снятых с производства позиций;
- Оперативные сроки поставки под заказ (от 5 рабочих дней);
- Экспресс доставка в любую точку России;
- Помощь Конструкторского Отдела и консультации квалифицированных инженеров;
- Техническая поддержка проекта, помощь в подборе аналогов, поставка прототипов;
- Поставка электронных компонентов под контролем ВП;
- Система менеджмента качества сертифицирована по Международному стандарту ISO 9001;
- При необходимости вся продукция военного и аэрокосмического назначения проходит испытания и сертификацию в лаборатории (по согласованию с заказчиком);
- Поставка специализированных компонентов военного и аэрокосмического уровня качества (Xilinx, Altera, Analog Devices, Intersil, Interpoint, Microsemi, Actel, Aeroflex, Peregrine, VPT, Syfer, Eurofarad, Texas Instruments, MS Kennedy, Miteq, Cobham, E2V, MA-COM, Hittite, Mini-Circuits, General Dynamics и др.);

Компания «Океан Электроники» является официальным дистрибьютором и эксклюзивным представителем в России одного из крупнейших производителей разъемов военного и аэрокосмического назначения «JONHON», а так же официальным дистрибьютором и эксклюзивным представителем в России производителя высокотехнологичных и надежных решений для передачи СВЧ сигналов «FORSTAR».



JONHON

«JONHON» (основан в 1970 г.)

Разъемы специального, военного и аэрокосмического назначения:

(Применяются в военной, авиационной, аэрокосмической, морской, железнодорожной, горно- и нефтедобывающей отраслях промышленности)

«FORSTAR» (основан в 1998 г.)

ВЧ соединители, коаксиальные кабели,
кабельные сборки и микроволновые компоненты:

(Применяются в телекоммуникациях гражданского и специального назначения, в средствах связи, РЛС, а так же военной, авиационной и аэрокосмической отраслях промышленности).



Телефон: 8 (812) 309-75-97 (многоканальный)

Факс: 8 (812) 320-03-32

Электронная почта: ocean@oceanchips.ru

Web: <http://oceanchips.ru/>

Адрес: 198099, г. Санкт-Петербург, ул. Калинина, д. 2, корп. 4, лит. А