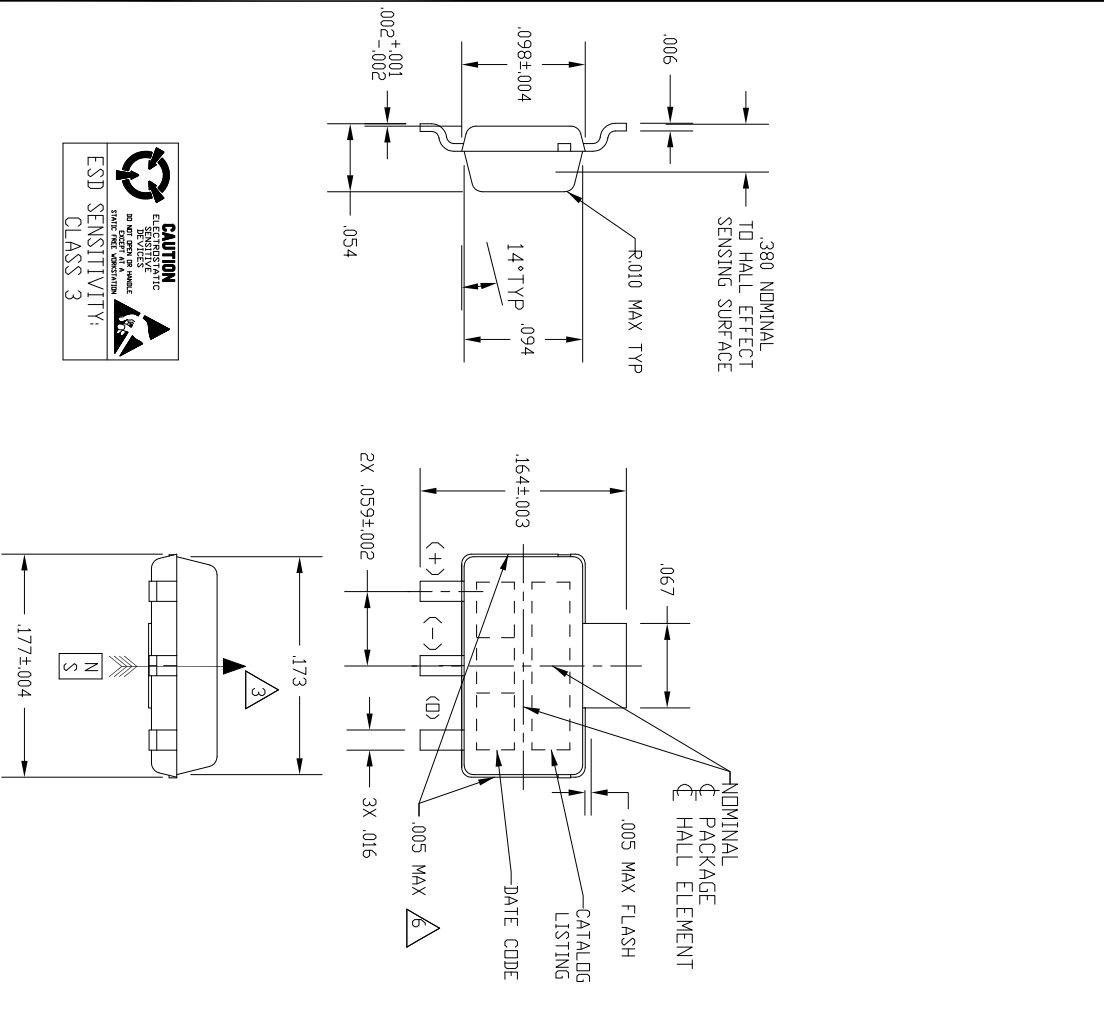


REVISIONS	DATE	BY	CHKD	APP'D
B. REV. Dwg. 18 JAN 98				
C. UPD. 18 JAN 98				
D. UPD. 18 JAN 98				
E. UPD. 18 JAN 98				
F. UPD. 18 JAN 98				
G. UPD. 18 JAN 98				
H. UPD. 18 JAN 98				
I. UPD. 18 JAN 98				
J. UPD. 18 JAN 98				
K. UPD. 18 JAN 98				
L. UPD. 18 JAN 98				

DRAWN	5 JAN 98	WJC	CHECK	19 JAN 98	SAV	CHECK	18 JAN 06	DGD	RELEASE NO.	DR-4996	REPLACES	-
-------	----------	-----	-------	-----------	-----	-------	-----------	-----	-------------	---------	----------	---

MICRO SWITCH
a Honeywell Division
SOLID STATE SENSOR
SS5 SERIES CHART 1



REV	DOCUMENT	CHANGED BY	CHECK
13	0024233	MCP 07SEF06	LG



ANSI Y14.5M-1982 APPLIES

THIS DRAWING COVERS A PROPRIETARY ITEM AND IS THE PROPERTY OF MICRO SWITCH, A DIVISION OF HONEYWELL. THIS DRAWING IS NOT TO BE COPIED OR USED WITHOUT THE APPROVAL OF MICRO SWITCH.

- NOTES
- 1 - SOLDERING INSTRUCTIONS: EXPOSURE TO HIGH TEMPERATURES SHOULD BE KEPT AT A MINIMUM. MICRO SWITCH RECOMMENDS AN INFRARED REFLOW PROCESS WITH PEAK TEMPERATURES NOT EXCEEDING 245°C (473°F) FOR 10 SECONDS MAXIMUM. DO NOT WAVE SOLDER THIS PRODUCT AS THIS PROCESS MAY NEGATIVELY AFFECT THE SENSOR'S PERFORMANCE AND RELIABILITY. SUBJECTING THESE PRODUCTS TO WAVE SOLDERING WILL VOID MICRO SWITCH'S WARRANTY.
 - 2 - ABSOLUTE MAXIMUM RATINGS ARE THE EXTREME LIMITS THE DEVICE WILL MOMENTARILY WITHSTAND WITHOUT DAMAGE TO THE DEVICE. ELECTRICAL AND MAGNETIC CHARACTERISTICS ARE NOT GUARANTEED IF THE SPECIFIED VOLTAGE AND/OR CURRENTS ARE EXCEEDED. NDR WILL THE DEVICE NECESSARILY OPERATE AT ABSOLUTE MAXIMUM RATING.
 - 3 - THE MAGNETIC FLUX USED TO OPERATE THE SWITCH MUST BE IN THE DIRECTION AND LOCATION SHOWN. (THIS ASSUMES THE CONVENTION THAT THE DIRECTION OF THE EXTERNAL FLUX OF A MAGNET IS FROM THE NORTH TO THE SOUTH POLE OF THE MAGNET.)
 - 4 - THE MAGNETIC FIELD STRENGTH (GAUSS) REQUIRED TO CAUSE THE SWITCH TO CHANGE STATE (OPERATE AND RELEASE) WILL BE AS SPECIFIED IN THE MAGNETIC CHARACTERISTICS. TO TEST THE SWITCH AGAINST THE SPECIFIED MAGNETIC CHARACTERISTICS, THE SWITCH MUST BE PLACED IN A UNIFORM MAGNETIC FIELD.
 - 5 - A "T" SUFFIX ON ANY CATALOG LISTING DESIGNATES THE PRODUCT WILL BE SUPPLIED IN TAPE AND REEL FORM PER EIA STD 481. SS5 SERIES SHLD IN TAPE AND REEL ONLY. SOME BASIC LISTINGS MAY NOT BE AVAILABLE.
 - 6 - GATE VESAGE PERMITTED IN THESE AREAS. UNDERFLUSH BREAKOUT LIMITED TO .007.
 - 7 - THESE HALL EFFECT SENSORS MAY HAVE AN INITIAL OUTPUT IN EITHER THE ON OR OFF STATE IF POWERED UP WITH AN APPLIED MAGNETIC FIELD IN THE DIFFERENTIAL ZONE (APPLIED MAGNETIC FIELD > BPP AND < BOP). MICRO SWITCH RECOMMENDS THAT THE APPLICATION CIRCUIT DESIGNER ALLOW 10 MICROSECONDS AFTER SUPPLY VOLTAGE HAS REACHED 5 VOLTS FOR THE OUTPUT VOLTAGE TO STABILIZE.

CONVERSION TO METRIC DIMENSIONS			
DIMENSION IN INCHES	METRIC EQUIVALENT, MM	DIMENSION IN INCHES	METRIC EQUIVALENT, MM
.001	0.025	.095	2.413
.002	0.051	.098	2.489
.003	0.076	.157	3.988
.004	0.102	.164	4.166
.005	0.127	.173	4.394
.006	0.152	.177	4.496
.007	0.178	.181	4.597
.008	0.203	.197	5.004
.015	0.381	.217	5.512
.016	0.406	.230	5.842
.030	0.762	.314	7.976
.031	0.787	.315	8.001
.038	0.965	.472	11.989
.050	1.270	.480	12.192
.059	1.499	.512	13.005
.067	1.702	.724	18.390
.069	1.753	1.300	33.020
.078	1.981	1.970	50.038
.079	2.007	7.010	178.054
.094	2.388	10.000	254.000

THIRD ANGLE PROJECTION
DO NOT SCALE PRINT
SCALE NONE
UNLESS TOLERANCES SPECIFIED TOLERANCES ARE:
ONE PLACE (.00) +0.0 0.3
TWO PLACE (.000) +0.015
THREE PLACE (.0000) +0.005
ANGLES
WEIGHT

MICRO SWITCH
a Honeywell Division
FED. REG. CODE 91929

SOLID STATE SENSOR

SS5 SERIES CHART 1

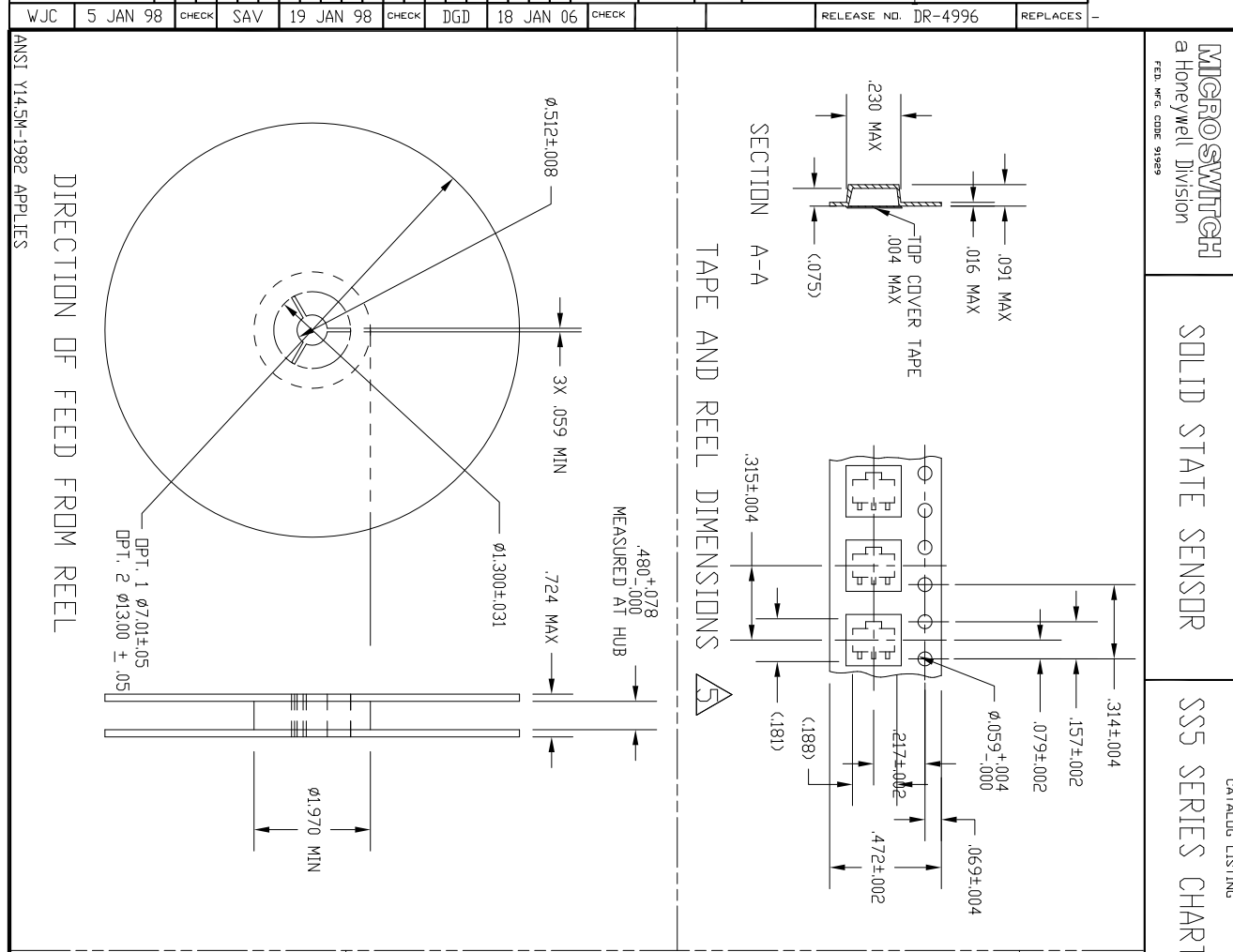
CATALOG LISTING

THIS DRAWING COVERS A PROPRIETARY ITEM AND IS THE PROPERTY OF MICRO SWITCH, A DIVISION OF HONEYWELL. THIS DRAWING IS NOT TO BE COPIED OR USED WITHOUT THE APPROVAL OF MICRO SWITCH.

CATALOG LISTING
SS5 SERIES CHART
PAGE 2 OF 5

ISSUE
14

REVISIONS
B REC'DWG
C 27 JAN 98
D 18 JAN 98
E 14 JAN 98
F 14 JAN 98
G 1 MAR 99
H 20 JAN 98
I 20 JAN 98
J 20 JAN 98
K 20 JAN 98
L 20 JAN 98
M 20 JAN 98
N 20 JAN 98
O 20 JAN 98
P 20 JAN 98
Q 20 JAN 98
R 20 JAN 98
S 20 JAN 98
T 20 JAN 98
U 20 JAN 98
V 20 JAN 98
W 20 JAN 98
X 20 JAN 98
Y 20 JAN 98
Z 20 JAN 98
AA 20 JAN 98
AB 20 JAN 98
AC 20 JAN 98
AD 20 JAN 98
AE 20 JAN 98
AF 20 JAN 98
AG 20 JAN 98
AH 20 JAN 98
AI 20 JAN 98
AJ 20 JAN 98
AK 20 JAN 98
AL 20 JAN 98
AM 20 JAN 98
AN 20 JAN 98
AO 20 JAN 98
AP 20 JAN 98
AQ 20 JAN 98
AR 20 JAN 98
AS 20 JAN 98
AT 20 JAN 98
AU 20 JAN 98
AV 20 JAN 98
AW 20 JAN 98
AX 20 JAN 98
AY 20 JAN 98
AZ 20 JAN 98
BA 20 JAN 98
BB 20 JAN 98
BC 20 JAN 98
BD 20 JAN 98
BE 20 JAN 98
BF 20 JAN 98
BG 20 JAN 98
BH 20 JAN 98
BI 20 JAN 98
BJ 20 JAN 98
BK 20 JAN 98
BL 20 JAN 98
BM 20 JAN 98
BN 20 JAN 98
BO 20 JAN 98
BP 20 JAN 98
BQ 20 JAN 98
BR 20 JAN 98
BS 20 JAN 98
BT 20 JAN 98
BU 20 JAN 98
BV 20 JAN 98
BW 20 JAN 98
BX 20 JAN 98
BY 20 JAN 98
BZ 20 JAN 98
CA 20 JAN 98
CB 20 JAN 98
CC 20 JAN 98
CD 20 JAN 98
CE 20 JAN 98
CF 20 JAN 98
CG 20 JAN 98
CH 20 JAN 98
CI 20 JAN 98
CJ 20 JAN 98
CK 20 JAN 98
CL 20 JAN 98
CM 20 JAN 98
CN 20 JAN 98
CO 20 JAN 98
CP 20 JAN 98
CQ 20 JAN 98
CR 20 JAN 98
CS 20 JAN 98
CT 20 JAN 98
CU 20 JAN 98
CV 20 JAN 98
CW 20 JAN 98
CX 20 JAN 98
CY 20 JAN 98
CZ 20 JAN 98
DA 20 JAN 98
DB 20 JAN 98
DC 20 JAN 98
DD 20 JAN 98
DE 20 JAN 98
DF 20 JAN 98
DG 20 JAN 98
DH 20 JAN 98
DI 20 JAN 98
DJ 20 JAN 98
DK 20 JAN 98
DL 20 JAN 98
DM 20 JAN 98
DN 20 JAN 98
DO 20 JAN 98
DP 20 JAN 98
DQ 20 JAN 98
DR 20 JAN 98
DS 20 JAN 98
DT 20 JAN 98
DU 20 JAN 98
DV 20 JAN 98
DW 20 JAN 98
DX 20 JAN 98
DY 20 JAN 98
DZ 20 JAN 98
EA 20 JAN 98
EB 20 JAN 98
EC 20 JAN 98
ED 20 JAN 98
EE 20 JAN 98
EF 20 JAN 98
EG 20 JAN 98
EH 20 JAN 98
EI 20 JAN 98
EJ 20 JAN 98
EK 20 JAN 98
EL 20 JAN 98
EM 20 JAN 98
EN 20 JAN 98
EO 20 JAN 98
EP 20 JAN 98
EQ 20 JAN 98
ER 20 JAN 98
ES 20 JAN 98
ET 20 JAN 98
EU 20 JAN 98
EV 20 JAN 98
EW 20 JAN 98
EX 20 JAN 98
EY 20 JAN 98
EZ 20 JAN 98
FA 20 JAN 98
FB 20 JAN 98
FC 20 JAN 98
FD 20 JAN 98
FE 20 JAN 98
FF 20 JAN 98
FG 20 JAN 98
FH 20 JAN 98
FI 20 JAN 98
FJ 20 JAN 98
FK 20 JAN 98
FL 20 JAN 98
FM 20 JAN 98
FN 20 JAN 98
FO 20 JAN 98
FP 20 JAN 98
FQ 20 JAN 98
FR 20 JAN 98
FS 20 JAN 98
FT 20 JAN 98
FU 20 JAN 98
FV 20 JAN 98
FW 20 JAN 98
FX 20 JAN 98
FY 20 JAN 98
FZ 20 JAN 98
GA 20 JAN 98
GB 20 JAN 98
GC 20 JAN 98
GD 20 JAN 98
GE 20 JAN 98
GF 20 JAN 98
GG 20 JAN 98
GH 20 JAN 98
GI 20 JAN 98
GJ 20 JAN 98
GK 20 JAN 98
GL 20 JAN 98
GM 20 JAN 98
GN 20 JAN 98
GO 20 JAN 98
GP 20 JAN 98
GQ 20 JAN 98
GR 20 JAN 98
GS 20 JAN 98
GT 20 JAN 98
GU 20 JAN 98
GV 20 JAN 98
GW 20 JAN 98
GX 20 JAN 98
GY 20 JAN 98
GZ 20 JAN 98
HA 20 JAN 98
HB 20 JAN 98
HC 20 JAN 98
HD 20 JAN 98
HE 20 JAN 98
HF 20 JAN 98
HG 20 JAN 98
HH 20 JAN 98
HI 20 JAN 98
HJ 20 JAN 98
HK 20 JAN 98
HL 20 JAN 98
HM 20 JAN 98
HN 20 JAN 98
HO 20 JAN 98
HP 20 JAN 98
HQ 20 JAN 98
HR 20 JAN 98
HS 20 JAN 98
HT 20 JAN 98
HU 20 JAN 98
HV 20 JAN 98
HW 20 JAN 98
HX 20 JAN 98
HY 20 JAN 98
HZ 20 JAN 98
IA 20 JAN 98
IB 20 JAN 98
IC 20 JAN 98
ID 20 JAN 98
IE 20 JAN 98
IF 20 JAN 98
IG 20 JAN 98
IH 20 JAN 98
II 20 JAN 98
IJ 20 JAN 98
IK 20 JAN 98
IL 20 JAN 98
IM 20 JAN 98
IN 20 JAN 98
IO 20 JAN 98
IP 20 JAN 98
IQ 20 JAN 98
IR 20 JAN 98
IS 20 JAN 98
IT 20 JAN 98
IU 20 JAN 98
IV 20 JAN 98
IW 20 JAN 98
IX 20 JAN 98
IY 20 JAN 98
IZ 20 JAN 98
JA 20 JAN 98
JB 20 JAN 98
JC 20 JAN 98
JD 20 JAN 98
JE 20 JAN 98
JF 20 JAN 98
JG 20 JAN 98
JH 20 JAN 98
JI 20 JAN 98
JJ 20 JAN 98
JK 20 JAN 98
JL 20 JAN 98
JM 20 JAN 98
JN 20 JAN 98
JO 20 JAN 98
JP 20 JAN 98
JQ 20 JAN 98
JR 20 JAN 98
JS 20 JAN 98
JT 20 JAN 98
JU 20 JAN 98
JV 20 JAN 98
JW 20 JAN 98
JX 20 JAN 98
JY 20 JAN 98
JZ 20 JAN 98
KA 20 JAN 98
KB 20 JAN 98
KC 20 JAN 98
KD 20 JAN 98
KE 20 JAN 98
KF 20 JAN 98
KG 20 JAN 98
KH 20 JAN 98
KI 20 JAN 98
KJ 20 JAN 98
KK 20 JAN 98
KL 20 JAN 98
KM 20 JAN 98
KN 20 JAN 98
KO 20 JAN 98
KP 20 JAN 98
KQ 20 JAN 98
KR 20 JAN 98
KS 20 JAN 98
KT 20 JAN 98
KU 20 JAN 98
KV 20 JAN 98
KW 20 JAN 98
KX 20 JAN 98
KY 20 JAN 98
KZ 20 JAN 98
LA 20 JAN 98
LB 20 JAN 98
LC 20 JAN 98
LD 20 JAN 98
LE 20 JAN 98
LF 20 JAN 98
LG 20 JAN 98
LH 20 JAN 98
LI 20 JAN 98
LJ 20 JAN 98
LK 20 JAN 98
LL 20 JAN 98
LM 20 JAN 98
LN 20 JAN 98
LO 20 JAN 98
LP 20 JAN 98
LQ 20 JAN 98
LR 20 JAN 98
LS 20 JAN 98
LT 20 JAN 98
LU 20 JAN 98
LV 20 JAN 98
LW 20 JAN 98
LX 20 JAN 98
LY 20 JAN 98
LZ 20 JAN 98
MA 20 JAN 98
MB 20 JAN 98
MC 20 JAN 98
MD 20 JAN 98
ME 20 JAN 98
MF 20 JAN 98
MG 20 JAN 98
MH 20 JAN 98
MI 20 JAN 98
MJ 20 JAN 98
MK 20 JAN 98
ML 20 JAN 98
MM 20 JAN 98
MN 20 JAN 98
MO 20 JAN 98
MP 20 JAN 98
MQ 20 JAN 98
MR 20 JAN 98
MS 20 JAN 98
MT 20 JAN 98
MU 20 JAN 98
MV 20 JAN 98
MW 20 JAN 98
MX 20 JAN 98
MY 20 JAN 98
MZ 20 JAN 98
NA 20 JAN 98
NB 20 JAN 98
NC 20 JAN 98
ND 20 JAN 98
NE 20 JAN 98
NF 20 JAN 98
NG 20 JAN 98
NH 20 JAN 98
NI 20 JAN 98
NJ 20 JAN 98
NK 20 JAN 98
NL 20 JAN 98
NM 20 JAN 98
NN 20 JAN 98
NO 20 JAN 98
NP 20 JAN 98
NQ 20 JAN 98
NR 20 JAN 98
NS 20 JAN 98
NT 20 JAN 98
NU 20 JAN 98
NV 20 JAN 98
NW 20 JAN 98
NX 20 JAN 98
NY 20 JAN 98
NZ 20 JAN 98
OA 20 JAN 98
OB 20 JAN 98
OC 20 JAN 98
OD 20 JAN 98
OE 20 JAN 98
OF 20 JAN 98
OG 20 JAN 98
OH 20 JAN 98
OI 20 JAN 98
OJ 20 JAN 98
OK 20 JAN 98
OL 20 JAN 98
OM 20 JAN 98
ON 20 JAN 98
OO 20 JAN 98
OP 20 JAN 98
OQ 20 JAN 98
OR 20 JAN 98
OS 20 JAN 98
OT 20 JAN 98
OU 20 JAN 98
OV 20 JAN 98
OW 20 JAN 98
OX 20 JAN 98
OY 20 JAN 98
OZ 20 JAN 98
PA 20 JAN 98
PB 20 JAN 98
PC 20 JAN 98
PD 20 JAN 98
PE 20 JAN 98
PF 20 JAN 98
PG 20 JAN 98
PH 20 JAN 98
PI 20 JAN 98
PJ 20 JAN 98
PK 20 JAN 98
PL 20 JAN 98
PM 20 JAN 98
PN 20 JAN 98
PO 20 JAN 98
PP 20 JAN 98
PQ 20 JAN 98
PR 20 JAN 98
PS 20 JAN 98
PT 20 JAN 98
PU 20 JAN 98
PV 20 JAN 98
PW 20 JAN 98
PX 20 JAN 98
PY 20 JAN 98
PZ 20 JAN 98
QA 20 JAN 98
QB 20 JAN 98
QC 20 JAN 98
QD 20 JAN 98
QE 20 JAN 98
QF 20 JAN 98
QG 20 JAN 98
QH 20 JAN 98
QI 20 JAN 98
QJ 20 JAN 98
QK 20 JAN 98
QL 20 JAN 98
QM 20 JAN 98
QN 20 JAN 98
QO 20 JAN 98
QP 20 JAN 98
QQ 20 JAN 98
QR 20 JAN 98
QS 20 JAN 98
QT 20 JAN 98
QU 20 JAN 98
QV 20 JAN 98
QW 20 JAN 98
QX 20 JAN 98
QY 20 JAN 98
QZ 20 JAN 98
RA 20 JAN 98
RB 20 JAN 98
RC 20 JAN 98
RD 20 JAN 98
RE 20 JAN 98
RF 20 JAN 98
RG 20 JAN 98
RH 20 JAN 98
RI 20 JAN 98
RJ 20 JAN 98
RK 20 JAN 98
RL 20 JAN 98
RM 20 JAN 98
RN 20 JAN 98
RO 20 JAN 98
RP 20 JAN 98
RQ 20 JAN 98
RR 20 JAN 98
RS 20 JAN 98
RT 20 JAN 98
RU 20 JAN 98
RV 20 JAN 98
RW 20 JAN 98
RX 20 JAN 98
RY 20 JAN 98
RZ 20 JAN 98
SA 20 JAN 98
SB 20 JAN 98
SC 20 JAN 98
SD 20 JAN 98
SE 20 JAN 98
SF 20 JAN 98
SG 20 JAN 98
SH 20 JAN 98
SI 20 JAN 98
SJ 20 JAN 98
SK 20 JAN 98
SL 20 JAN 98
SM 20 JAN 98
SN 20 JAN 98
SO 20 JAN 98
SP 20 JAN 98
SQ 20 JAN 98
SR 20 JAN 98
SS 20 JAN 98
ST 20 JAN 98
SU 20 JAN 98
SV 20 JAN 98
SW 20 JAN 98
SX 20 JAN 98
SY 20 JAN 98
SZ 20 JAN 98
TA 20 JAN 98
TB 20 JAN 98
TC 20 JAN 98
TD 20 JAN 98
TE 20 JAN 98
TF 20 JAN 98
TG 20 JAN 98
TH 20 JAN 98
TI 20 JAN 98
TJ 20 JAN 98
TK 20 JAN 98
TL 20 JAN 98
TM 20 JAN 98
TN 20 JAN 98
TO 20 JAN 98
TP 20 JAN 98
TQ 20 JAN 98
TR 20 JAN 98
TS 20 JAN 98
TT 20 JAN 98
TU 20 JAN 98
TV 20 JAN 98
TW 20 JAN 98
TX 20 JAN 98
TY 20 JAN 98
TZ 20 JAN 98
UA 20 JAN 98
UB 20 JAN 98
UC 20 JAN 98
UD 20 JAN 98
UE 20 JAN 98
UF 20 JAN 98
UG 20 JAN 98
UH 20 JAN 98
UI 20 JAN 98
UJ 20 JAN 98
UK 20 JAN 98
UL 20 JAN 98
UM 20 JAN 98
UN 20 JAN 98
UO 20 JAN 98
UP 20 JAN 98
UQ 20 JAN 98
UR 20 JAN 98
US 20 JAN 98
UT 20 JAN 98
UU 20 JAN 98
UV 20 JAN 98
UW 20 JAN 98
UX 20 JAN 98
UY 20 JAN 98
UZ 20 JAN 98
VA 20 JAN 98
VB 20 JAN 98
VC 20 JAN 98
VD 20 JAN 98
VE 20 JAN 98
VF 20 JAN 98
VG 20 JAN 98
VH 20 JAN 98
VI 20 JAN 98
VJ 20 JAN 98
VK 20 JAN 98
VL 20 JAN 98
VM 20 JAN 98
VN 20 JAN 98
VO 20 JAN 98
VP 20 JAN 98
VQ 20 JAN 98
VR 20 JAN 98
VS 20 JAN 98
VT 20 JAN 98
VU 20 JAN 98
VV 20 JAN 98
VW 20 JAN 98
VX 20 JAN 98
VY 20 JAN 98
VZ 20 JAN 98
WA 20 JAN 98
WB 20 JAN 98
WC 20 JAN 98
WD 20 JAN 98
WE 20 JAN 98
WF 20 JAN 98
WG 20 JAN 98
WH 20 JAN 98
WI 20 JAN 98
WJ 20 JAN 98
WK 20 JAN 98
WL 20 JAN 98
WM 20 JAN 98
WN 20 JAN 98
WO 20 JAN 98
WP 20 JAN 98
WQ 20 JAN 98
WR 20 JAN 98
WS 20 JAN 98
WT 20 JAN 98
WU 20 JAN 98
WV 20 JAN 98
WW 20 JAN 98
WX 20 JAN 98
WY 20 JAN 98
WZ 20 JAN 98
XA 20 JAN 98
XB 20 JAN 98
XC 20 JAN 98
XD 20 JAN 98
XE 20 JAN 98
XF 20 JAN 98
XG 20 JAN 98
XH 20 JAN 98
XI 20 JAN 98
XJ 20 JAN 98
XK 20 JAN 98
XL 20 JAN 98
XM 20 JAN 98
XN 20 JAN 98
XO 20 JAN 98
XP 20 JAN 98
XQ 20 JAN 98
XR 20 JAN 98
XS 20 JAN 98
XT 20 JAN 98
XU 20 JAN 98
XV 20 JAN 98
XW 20 JAN 98
XX 20 JAN 98
XY 20 JAN 98
XZ 20 JAN 98
YA 20 JAN 98
YB 20 JAN 98
YC 20 JAN 98
YD 20 JAN 98
YE 20 JAN 98
YF 20 JAN 98
YG 20 JAN 98
YH 20 JAN 98
YI 20 JAN 98
YJ 20 JAN 98
YK 20 JAN 98
YL 20 JAN 98
YM 20 JAN 98
YN 20 JAN 98
YO 20 JAN 98
YP 20 JAN 98
YQ 20 JAN 98
YR 20 JAN 98
YS 20 JAN 98
YT 20 JAN 98
YU 20 JAN 98
YV 20 JAN 98
YW 20 JAN 98
YX 20 JAN 98
YY 20 JAN 98
YZ 20 JAN 98
ZA 20 JAN 98
ZB 20 JAN 98
ZC 20 JAN 98
ZD 20 JAN 98
ZE 20 JAN 98
ZF 20 JAN 98
ZG 20 JAN 98
ZH 20 JAN 98
ZI 20 JAN 98
ZJ 20 JAN 98
ZK 20 JAN 98
ZL 20 JAN 98
ZM 20 JAN 98
ZN 20 JAN 98
ZO 20 JAN 98
ZP 20 JAN 98
ZQ 20 JAN 98
ZR 20 JAN 98
ZS 20 JAN 98
ZT 20 JAN 98
ZU 20 JAN 98
ZV 20 JAN 98
ZW 20 JAN 98
ZX 20 JAN 98
ZY 20 JAN 98
ZZ 20 JAN 98



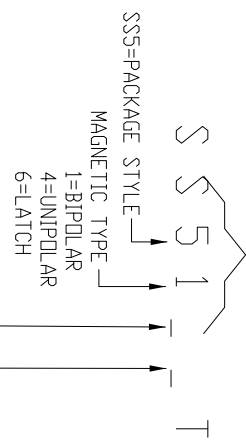
DIRECTION OF FEED FROM REEL

ANSI Y14.5M-1982 APPLIES

SSS CATALOG SYSTEM

PREFIX
BASIC CATALOG LISTING:
PACKAGE STYLE, MAGNETIC TYPE,
ELECTRICAL/MAGNETIC SPECS

CHARACTERS IN THESE
POSITIONS OF THE LISTING
ARE BRANDED ON THE PRODUCT



RELATIVE GAUSS OPERATING RANGE
(BLANK, 0-9, 9=HIGH GAUSS)

ELECTRICAL/MAGNETIC OPTIONS
(BLANK, A-K & U-Z)
A-STANDARD
B-K & U-Z-SPECIALS



THIRD ANGLE PROJECTION	
SCALE	NONE
DO NOT SCALE PRINT	
UNLESS TOLERANCES SPECIFIED	
TOLERANCES ARE:	
ONE PLACE	±0.03
TWO PLACE	±0.015
THREE PLACE	±0.005
ANGLES	±
WEIGHT	

MICRO SWITCH
a Honeywell Division
FED. REG. CODE 91989

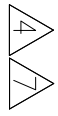
SOLIC STATE SERIES

SS5 SERIES CHART 1

CATALOG LISTING

THIS DRAWING COVERS A PROPRIETARY ITEM AND IS THE PROPERTY OF MICRO SWITCH, A DIVISION OF HONEYWELL. THIS DRAWING IS NOT TO BE COPIED OR USED WITHOUT THE APPROVAL OF MICRO SWITCH.

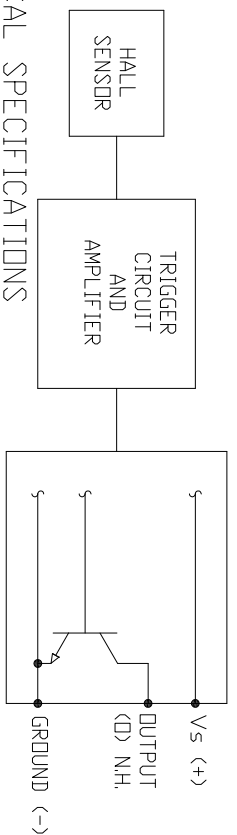
TABLE 1 - MAGNETIC SPECIFICATIONS



LISTING	-40°C	0°C	25°C	85°C	125°C	150°C
MIN OPERATE GAUSS						
SS511	NS	NS	NS	NS	NS	NS
SS511AT	NS	NS	NS	NS	NS	NS
SS513AT	NS	NS	NS	NS	NS	NS
SS541AT	50	53	55	45	40	35
SS543AT	110	110	110	90	80	65
SS549AT	285	305	310	290	270	260
SS561AT	5	5	10	10	5	5
SS566AT	100	100	100	95	80	70
MAX OPERATE GAUSS						
SS511	145	145	140	150	200	250
SS511AT	70	65	60	60	65	70
SS513AT	140	140	140	140	140	140
SS541AT	135	117	115	120	123	125
SS543AT	215	190	180	180	190	200
SS549AT	435	400	390	400	410	420
SS561AT	110	90	85	85	100	110
SS566AT	200	185	180	180	180	185
MIN RELEASE GAUSS						
SS511	-145	-145	-140	-150	-200	-250
SS511AT	-70	-65	-60	-60	-65	-70
SS513AT	-140	-140	-140	-140	-140	-140
SS541AT	20	20	20	15	15	10
SS543AT	80	80	75	70	60	55
SS549AT	210	230	235	215	200	185
SS561AT	-110	-90	-85	-85	-100	-110
SS566AT	-200	-185	-180	-180	-180	-185
MAX RELEASE GAUSS						
SS511	NS	NS	NS	NS	NS	NS
SS511AT	NS	NS	NS	NS	NS	NS
SS513AT	NS	NS	NS	NS	NS	NS
SS541AT	120	99	95	105	115	120
SS543AT	190	165	155	165	180	195
SS549AT	360	325	315	325	340	345
SS561AT	-5	-5	-10	-10	-5	-5
SS566AT	-100	-100	-100	-95	-80	-70
MIN DIFF GAUSS						
SS511	40	50	50	50	60	NS
SS511AT	15	15	15	12	12	10
SS513AT	20	20	20	20	20	20
SS541AT	15	15	20	15	8	5
SS543AT	25	25	25	15	10	5
SS549AT	30	30	30	30	30	30
SS561AT	50	50	50	50	50	50
SS566AT	200	200	200	190	160	140

SS5XT ELECTRICAL SPECIFICATIONS

CHARACTERISTIC	TEST CONDITIONS	UNITS
VOLTAGE RANGE	VCC = 24V, -40°C < T < 150°C, B > MAX DP	4.5 TO 24 VOLTS
MAX I _{ON}	VCC = 24V, V _{out} = 24V, -40°C < T < 150°C, B < MIN REL	100 mA
MAX I _{OFF}	VCC = 24V, V _{out} = 24V, -40°C < T < 150°C, B < MIN REL	11.3 mA
SINK CURRENT	VCC = 45V TO 24V, T = 25°C, B > MAX DP	20 mA
MAX V _{SOFT}	VCC = 45V TO 24V, T = 25°C, B > MAX DP	0.4 VOLTS
MAX LEAKAGE	VCC = 12V, R	10 μA
RISE TIME	VCC = 12V, R	1.5 μS
FALL TIME	V _{SOFT} 12V, R	1.5 μS
90% TO 10%	V _{SOFT} 12V, R	1.5 μS



CHARACTERISTIC	TEST CONDITIONS	UNITS
VOLTAGE RANGE	VCC = 30V, -40°C < T < 150°C, B > MAX DP	3.8 TO 30 VOLTS
MAX I _{ON}	VCC = 30V, V _{out} = 30V, -40°C < T < 150°C, B < MIN REL	100 mA
MAX I _{OFF}	VCC = 30V, V _{out} = 30V, -40°C < T < 150°C, B < MIN REL	10.0 mA
SINK CURRENT	VCC = 38V, B > MAX DP	20 mA
MAX V _{SOFT}	VCC = 12V, R	0.4 VOLTS
MAX LEAKAGE	VCC = 12V, R	10 μA
RISE TIME	VCC = 12V, R	1.5 μS
FALL TIME	V _{SOFT} 12V, R	1.5 μS
90% TO 10%	V _{SOFT} 12V, R	1.5 μS

SS5XXAT ELECTRICAL SPECIFICATIONS

LISTING	TYPE	BRAND
SS511	BIPOLAR	SS511
SS511AT	BIPOLAR	SS511A
SS513AT	BIPOLAR	SS513A
SS541AT	UNIPOLAR	SS541A
SS543AT	UNIPOLAR	SS543A
SS549AT	UNIPOLAR	SS549A
SS561AT	LATCH	SS561A
SS566AT	LATCH	SS566A

ANSI Y14.5M-1982 APPLIES

CHARACTERISTIC	SYMBOL	MIN	MAX	UNITS
POWER SUPPLY	VCC	-1	30	VOLTS
OUTPUT VOLTAGE (DIF)	V _{OUT}		SEE TABLE	VOLTS
OUTPUT ON CURRENT	I _{ON}		30	mA
OPERATING TEMPERATURE	T	-50	60	°C
STORAGE TEMPERATURE	T _S	-65	160	°C
MAGNETIC FLUX	ND LIMIT			

CHARACTERISTIC	TEST CONDITIONS	UNITS
ABSOLUTE MAXIMUM RATING	SS5XXAT	
CHARACTERISTIC	SYMBOL	MIN
POWER SUPPLY	VCC	-1
OUTPUT VOLTAGE (DIF)	V _{OUT}	SEE TABLE
OUTPUT ON CURRENT	I _{ON}	30
OPERATING TEMPERATURE	T	-50
STORAGE TEMPERATURE	T _S	-65
MAGNETIC FLUX	ND LIMIT	

THIRD ANGLE PROJECTION	
SCALE	NONE
DO NOT SCALE PRINT	
UNLESS OTHERWISE SPECIFIED TOLERANCES ARE:	
DIM. PLACE	(.0) +0.03
TWO PLACE	(.00) +0.015
THREE PLACE	(.000) +0.005
ANGLES	
WEIGHT	

MICRO SWITCH
a Honeywell Division
FED. MFG. CODE 91929

SOLID STATE SENSOR

SS5 SERIES CHART 1

CATALOG LISTING

THIS DRAWING COVERS A PROPRIETARY ITEM AND IS THE PROPERTY OF MICRO SWITCH, A DIVISION OF HONEYWELL. THIS DRAWING IS NOT TO BE COPIED OR USED WITHOUT THE APPROVAL OF MICRO SWITCH.

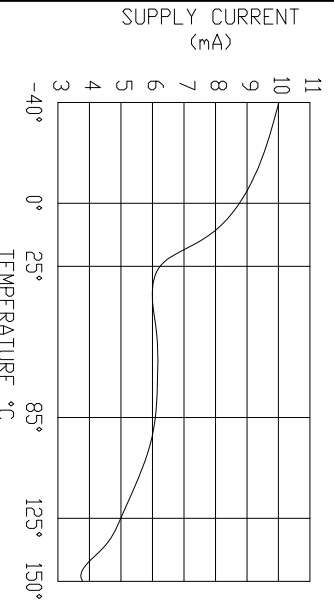
CATALOG LISTING
SS5 SERIES CHART
PAGE 4 OF 5

ISSUE
14

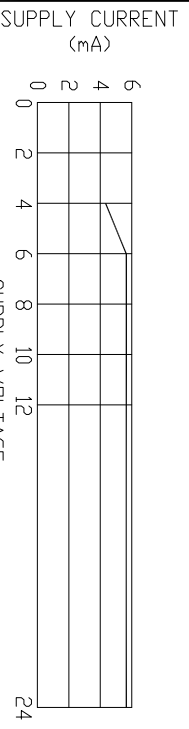
PTC/CAD
3D

DRAWN WJC 5 JAN 98 CHECK SAV 19 JAN 98 CHECK DGD 18 JAN 06 CHECK
RELEASE NO. DR-4996 REPLACES -

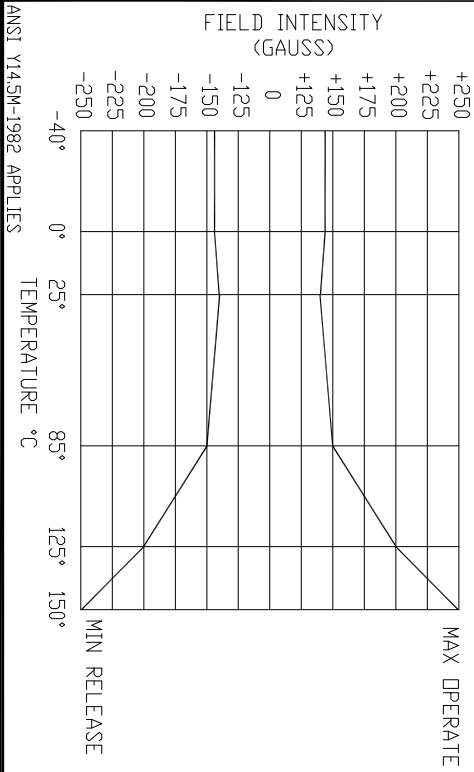
ANSI Y14.5M-1982 APPLIES



MAXIMUM SUPPLY CURRENT VS TEMPERATURE (OFF)

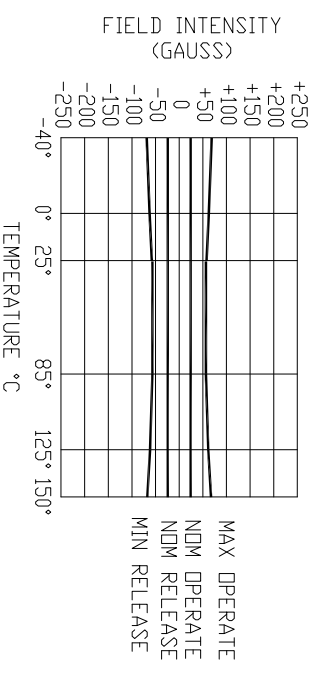


TYPICAL SUPPLY CURRENT (DEVICE OFF) AT 25°C



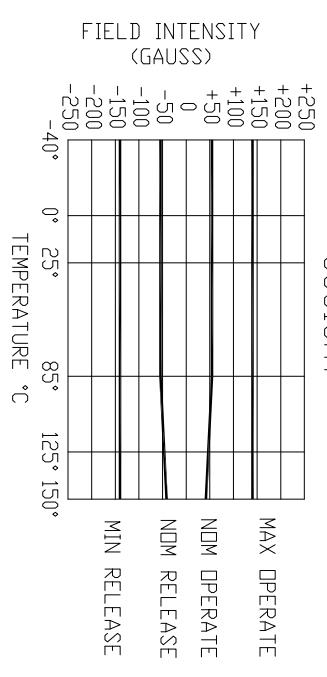
FIELD INTENSITY (GAUSS)

SS511AT



MAX OPERATE
NDM OPERATE
NDM RELEASE
MIN RELEASE

SS513AT



MAX OPERATE
NDM OPERATE
NDM RELEASE
MIN RELEASE



THIRD ANGLE PROJECTION
SCALE NONE
DO NOT SCALE PRINT
UNLESS TOLERANCES SPECIFIED
TOLERANCES ARE:
ONE PLACE (.00) +0.03
TWO PLACE (.000) +0.015
THREE PLACE (.0000) +0.005
ANGLES ±
WEIGHT

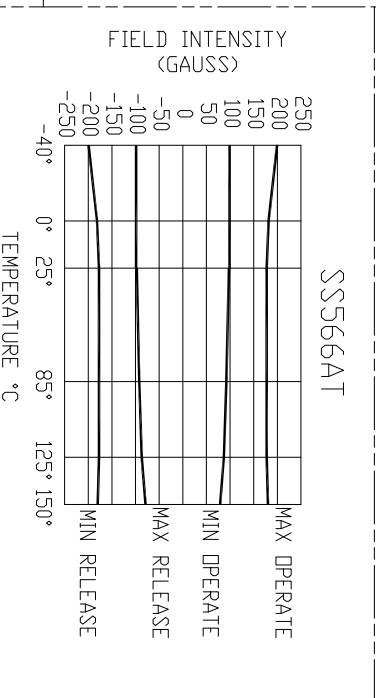
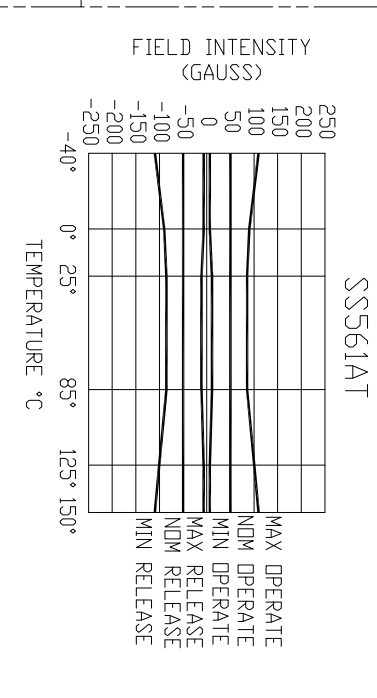
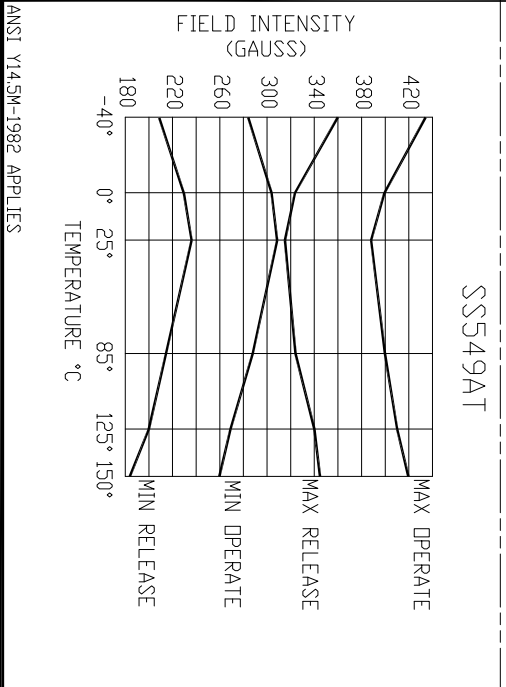
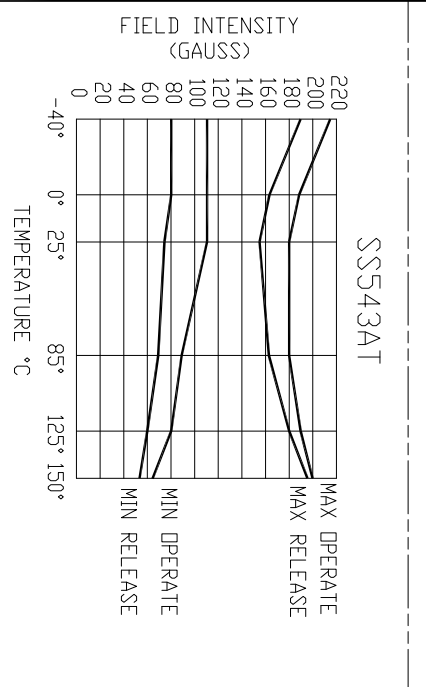
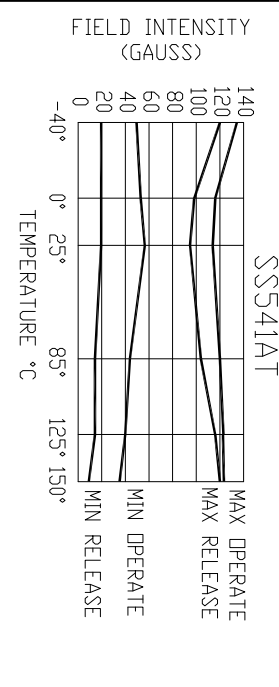
WJC	5 JAN 98	CHECK	SAV	19 JAN 02	CHECK	DGD	18 JAN 06	CHECK	RELEASE NO.	DR-4996	REPLACES	-
-----	----------	-------	-----	-----------	-------	-----	-----------	-------	-------------	---------	----------	---

MICRO SWITCH
a Honeywell Division
FED. MFG. CODE 91929

SOLID STATE SENSOR

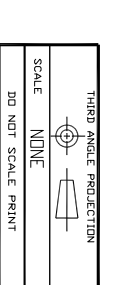
CATALOG LISTING
SS5 SERIES CHART 1

THIS DRAWING COVERS A PROPRIETARY ITEM AND IS THE PROPERTY OF MICRO SWITCH, A DIVISION OF HONEYWELL. THIS DRAWING IS NOT TO BE COPIED OR USED WITHOUT THE APPROVAL OF MICRO SWITCH.



REV. NO.	DATE	DESCRIPTION
A	27 JUN 98	REV. DWG
B	18 JAN 06	REV. DWG
C	3 NOV 08	REV. DWG
D	14 MAR 09	REV. DWG
E	20 SEP 09	REV. DWG
F	20 JUL 17	REV. DWG
G	20 JUN 17	REV. DWG
H	20 JUL 16	REV. DWG
I	12 APR 15	REV. DWG
J	12 APR 15	REV. DWG
K	12 APR 15	REV. DWG
L	12 APR 15	REV. DWG
M	12 APR 15	REV. DWG

CAUTION
ELECTROSTATIC SENSITIVE DEVICE
DO NOT SCALE PRINT
SCALE: NONE
UNLESS TOLERANCES SPECIFIED
ONE PLACE (.00) +0.00 -0.00
TWO PLACE (.000) +0.015
THREE PLACE (.0000) +0.005
ANGLES
WEIGHT



ANSI Y14.5M-1982 APPLIES

Компания «Океан Электроники» предлагает заключение долгосрочных отношений при поставках импортных электронных компонентов на взаимовыгодных условиях!

Наши преимущества:

- Поставка оригинальных импортных электронных компонентов напрямую с производств Америки, Европы и Азии, а так же с крупнейших складов мира;
- Широкая линейка поставок активных и пассивных импортных электронных компонентов (более 30 млн. наименований);
- Поставка сложных, дефицитных, либо снятых с производства позиций;
- Оперативные сроки поставки под заказ (от 5 рабочих дней);
- Экспресс доставка в любую точку России;
- Помощь Конструкторского Отдела и консультации квалифицированных инженеров;
- Техническая поддержка проекта, помощь в подборе аналогов, поставка прототипов;
- Поставка электронных компонентов под контролем ВП;
- Система менеджмента качества сертифицирована по Международному стандарту ISO 9001;
- При необходимости вся продукция военного и аэрокосмического назначения проходит испытания и сертификацию в лаборатории (по согласованию с заказчиком);
- Поставка специализированных компонентов военного и аэрокосмического уровня качества (Xilinx, Altera, Analog Devices, Intersil, Interpoint, Microsemi, Actel, Aeroflex, Peregrine, VPT, Syfer, Eurofarad, Texas Instruments, MS Kennedy, Miteq, Cobham, E2V, MA-COM, Hittite, Mini-Circuits, General Dynamics и др.);

Компания «Океан Электроники» является официальным дистрибьютором и эксклюзивным представителем в России одного из крупнейших производителей разъемов военного и аэрокосмического назначения «JONHON», а так же официальным дистрибьютором и эксклюзивным представителем в России производителя высокотехнологичных и надежных решений для передачи СВЧ сигналов «FORSTAR».



JONHON

«JONHON» (основан в 1970 г.)

Разъемы специального, военного и аэрокосмического назначения:

(Применяются в военной, авиационной, аэрокосмической, морской, железнодорожной, горно- и нефтедобывающей отраслях промышленности)

«FORSTAR» (основан в 1998 г.)

ВЧ соединители, коаксиальные кабели, кабельные сборки и микроволновые компоненты:

(Применяются в телекоммуникациях гражданского и специального назначения, в средствах связи, РЛС, а так же военной, авиационной и аэрокосмической отраслях промышленности).



Телефон: 8 (812) 309-75-97 (многоканальный)

Факс: 8 (812) 320-03-32

Электронная почта: ocean@oceanchips.ru

Web: <http://oceanchips.ru/>

Адрес: 198099, г. Санкт-Петербург, ул. Калинина, д. 2, корп. 4, лит. А